
2025 Report

BOONE COUNTY HIGHWAY DEPARTMENT

OUR VISION:

To help all users of Boone County's transportation system to reach their destination safely.

2024 Completed Work

Work Type	Total
Single Chip & Seal	9.45 miles
Double Chip & Seal	16.69 miles
Road Conversion	1.77 miles
CMA Overlay	2.76 miles
Herbicide Application	708 road segments
Brush Crew Clearing	176 road segments
Mowing/Mulching	126 road segments

414 miles of Paved Roads

311 miles of Gravel Roads

1,182 Total Segments



2024 Road Projects

Treatment	Length
Hot Mix Asphalt Resurfacing	10.2 miles
Microsurfacing	4.2 miles
Cape Seal (microsurface & chip seal)	2.31 miles
Crackfill	18.84 miles
Reconstruction	2.26 miles

414 miles of Paved Roads



CR 450 N



CR 650 N

2024 Completed Work

Work Type	Total
Bridges Washed	149
Bridge Preventative Maintenance <small>(Scour Protection, Log Jam Removal, erosion control, etc.)</small>	26
Small Structure Preventative Maintenance <small>(Scour Protection, Log Jam Removal, erosion control, etc.)</small>	13
Bridge Decks Sealed	7



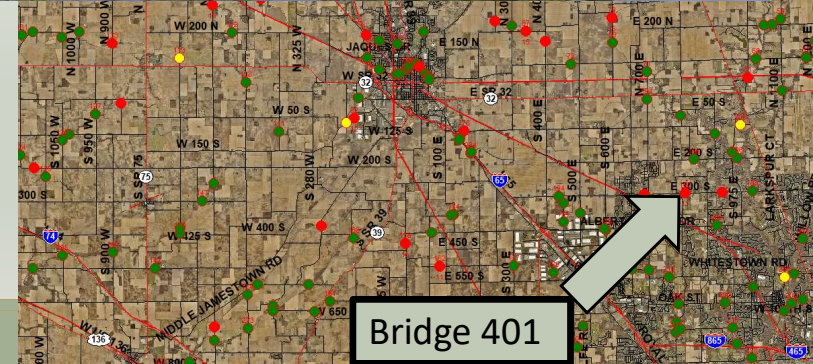
2024 Funding Awards

Awarded \$8,309,619.99

Federal 80/20

**Bridge 401, CR 300 S East
of CR 875 E**

- Replacement Project
- Est. Construction- 2029



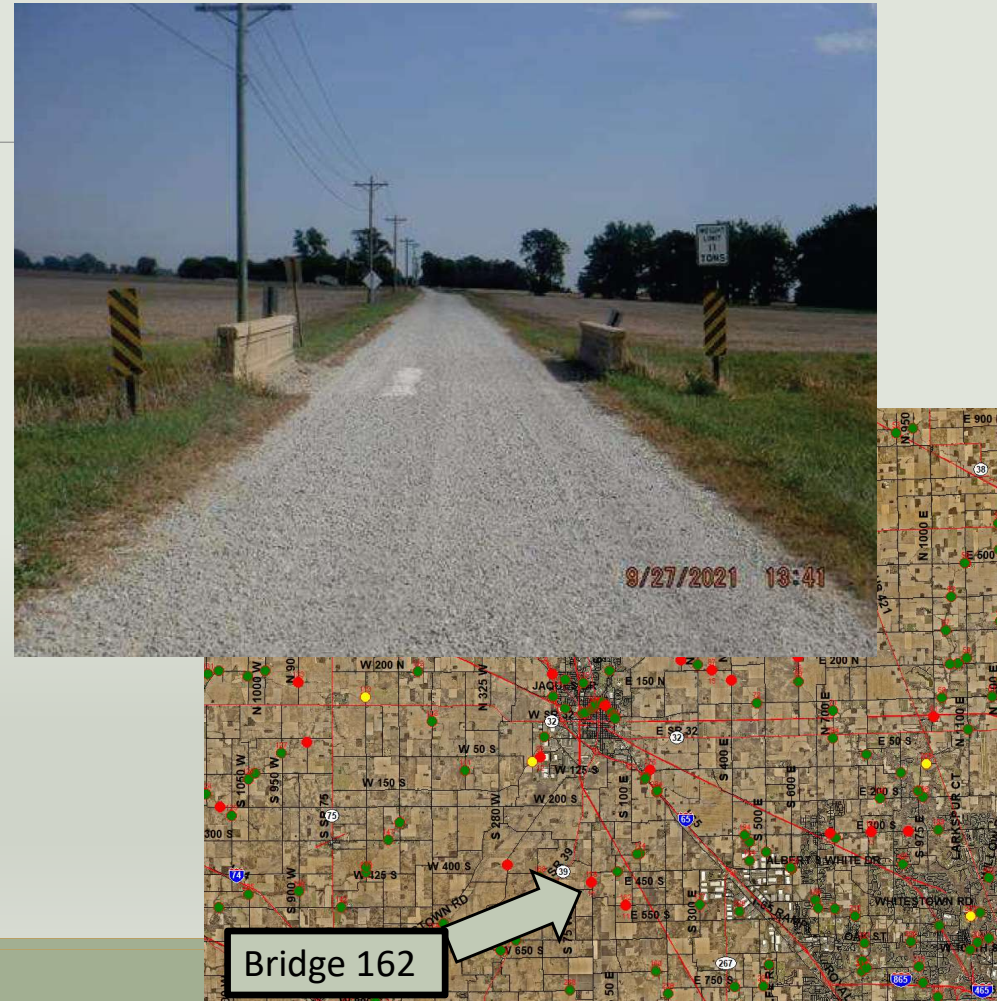
2024 Funding Awards

Awarded \$1,093,798.04

**Federal 80/20 for CN & CE
Phases**

**Bridge 162, CR 500 S West
of CR 100 E**

- Replacement Project
- Est. Construction- 2026



2024 Funding Awards

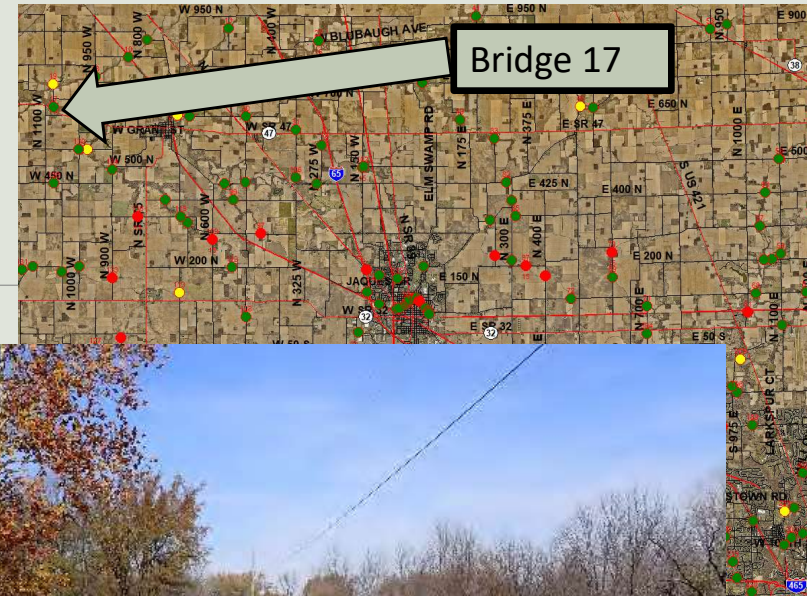
Awarded \$139,695.30

Community Crossings

50/50

Bridge 17, CR 1075 W South of CR 750 N

- **Rehabilitation Project**
- **Project Complete**



2024 Funding Awards

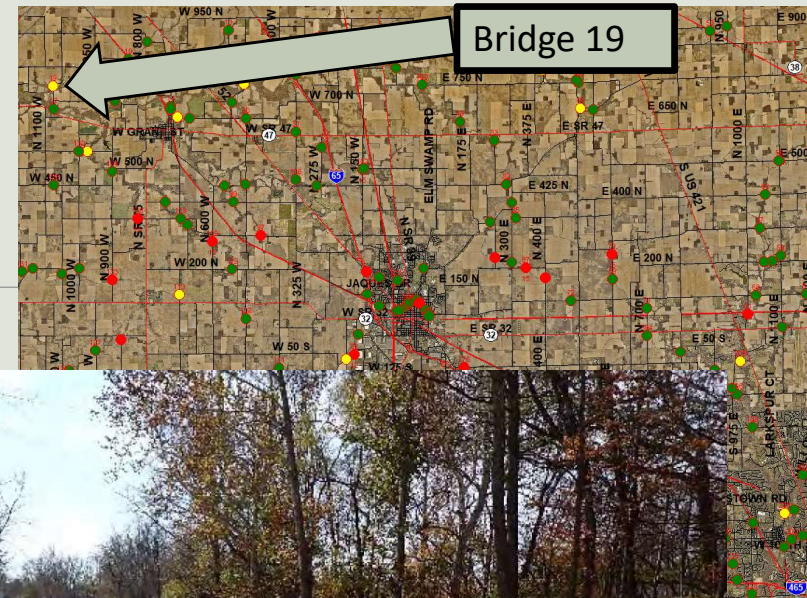
Awarded \$233,280.25

Community Crossings

50/50

Bridge 19, CR 1075 W North of CR 750 N

- **Rehabilitation Project**
- **Project Complete**



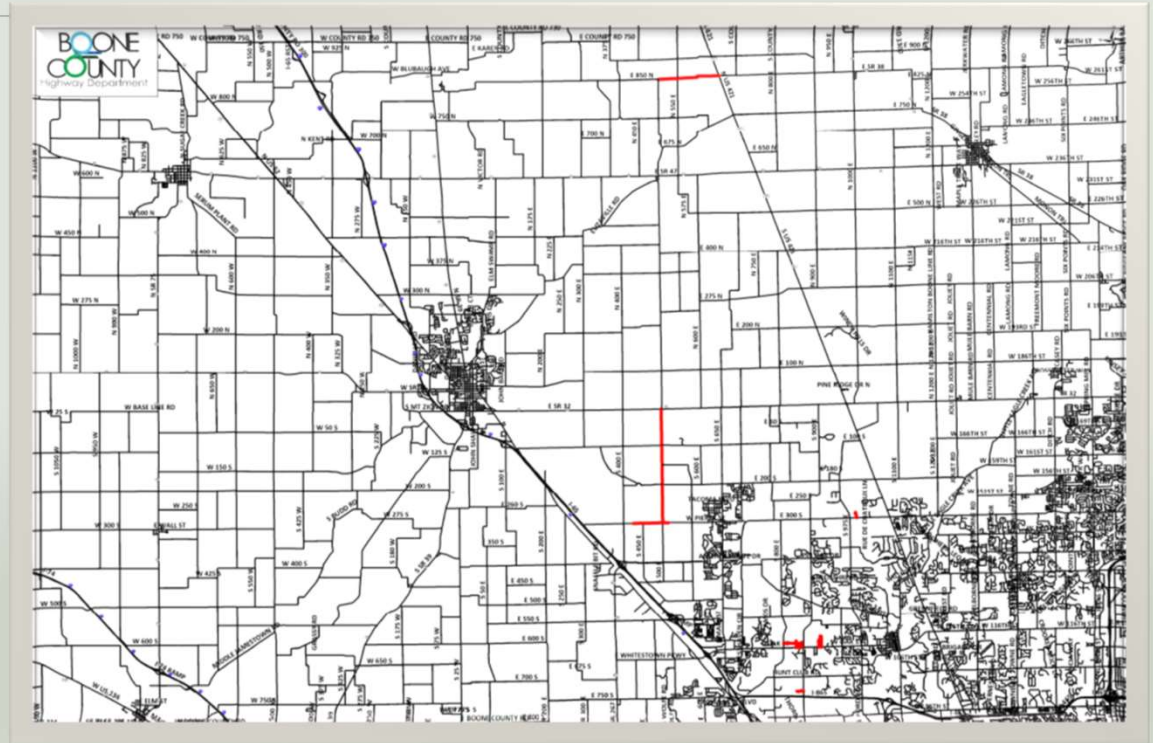
2024 Funding Awards

Awarded \$1,127,024.44

CCMG 50/50

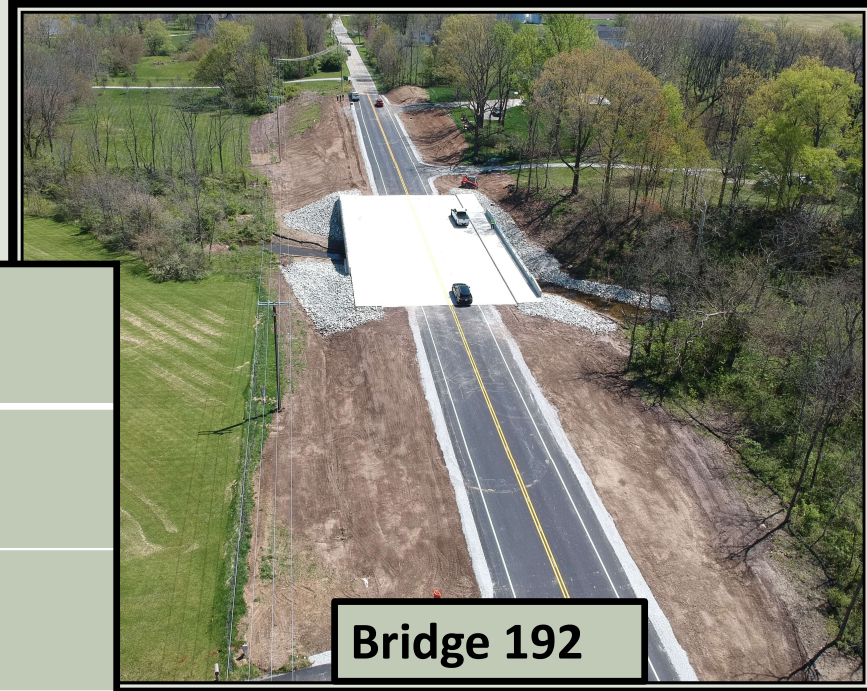
Asphalt Resurfacing

- CR 500 E, SR 32 to CR 300 S Full Depth Reclamation
- HMA Resurfacing on Various Roads

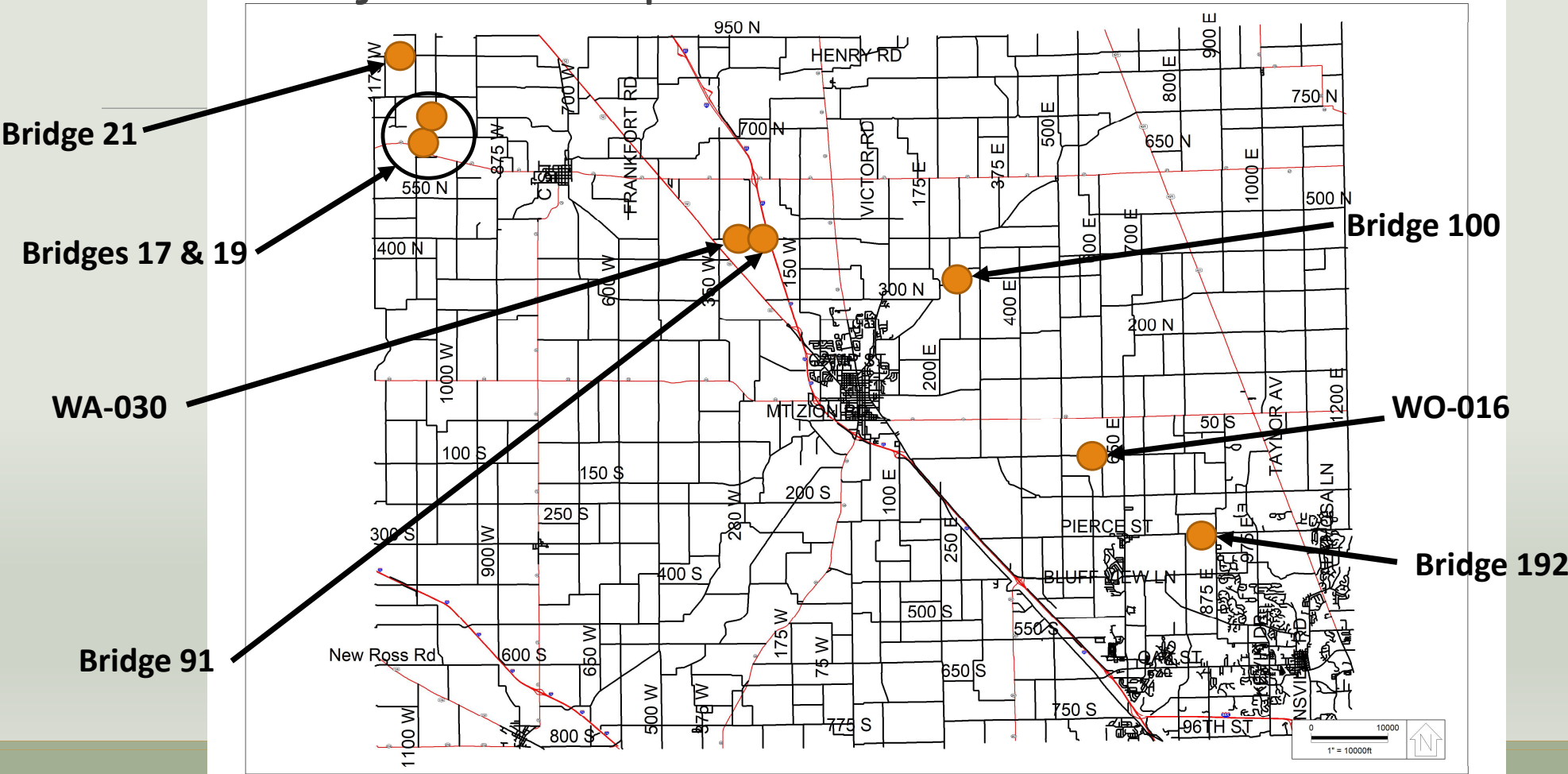


2024 Projects

Bridge Replacements	21- CR 900 N West of CR 1100 W 192- CR 300 S East of CR 800 E
Bridge Rehabilitations	17- CR 1075 W South of CR 750 N 19- CR 1075 W North of CR 750 N
Bridge Repairs	91- Elizaville Road East of CR 225 E 100- CR 450 N West of CR 275 W
Small Structure Replacements	WO-016- CR 100 S West of CR 600 E WA-030- CR 450 N East of CR 350 W
Sidewalk Replacement	7,270 linear feet



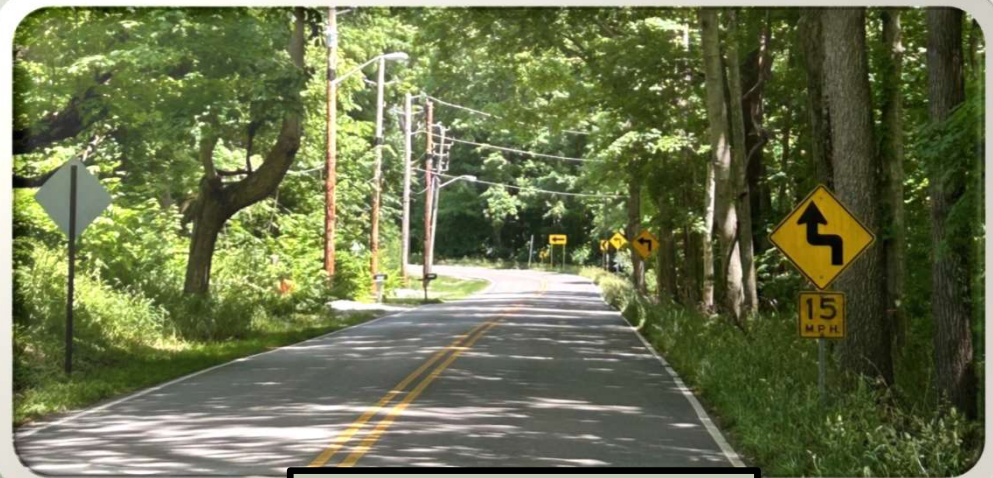
Structure Projects Completed in 2024



Road Safety

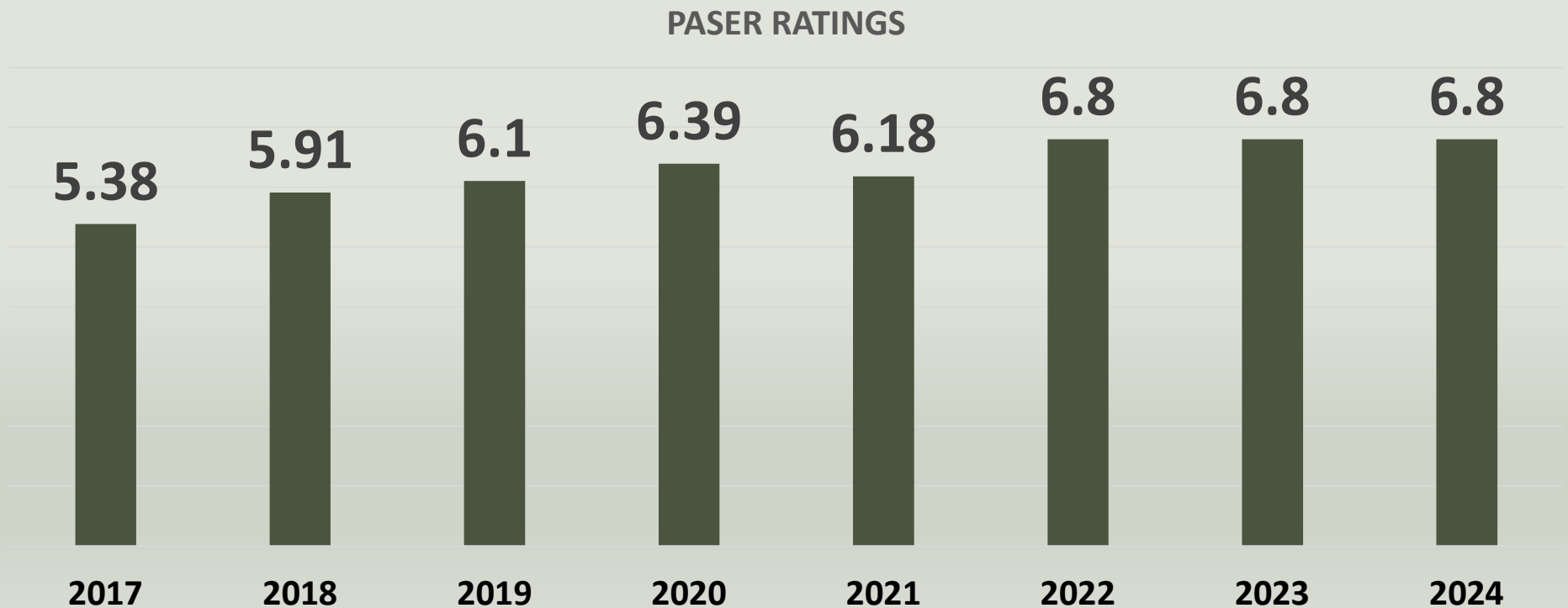
2 Curves with High Crash Rates 2013-2017

- 96th St & Ford Road
- 96th St East of Moore Road
 - Combined 15 Crashes per year
- High Friction Surface Treatment & Slope Corrections Completed
- Post Construction- 3 Crashes Total (2020-2023)

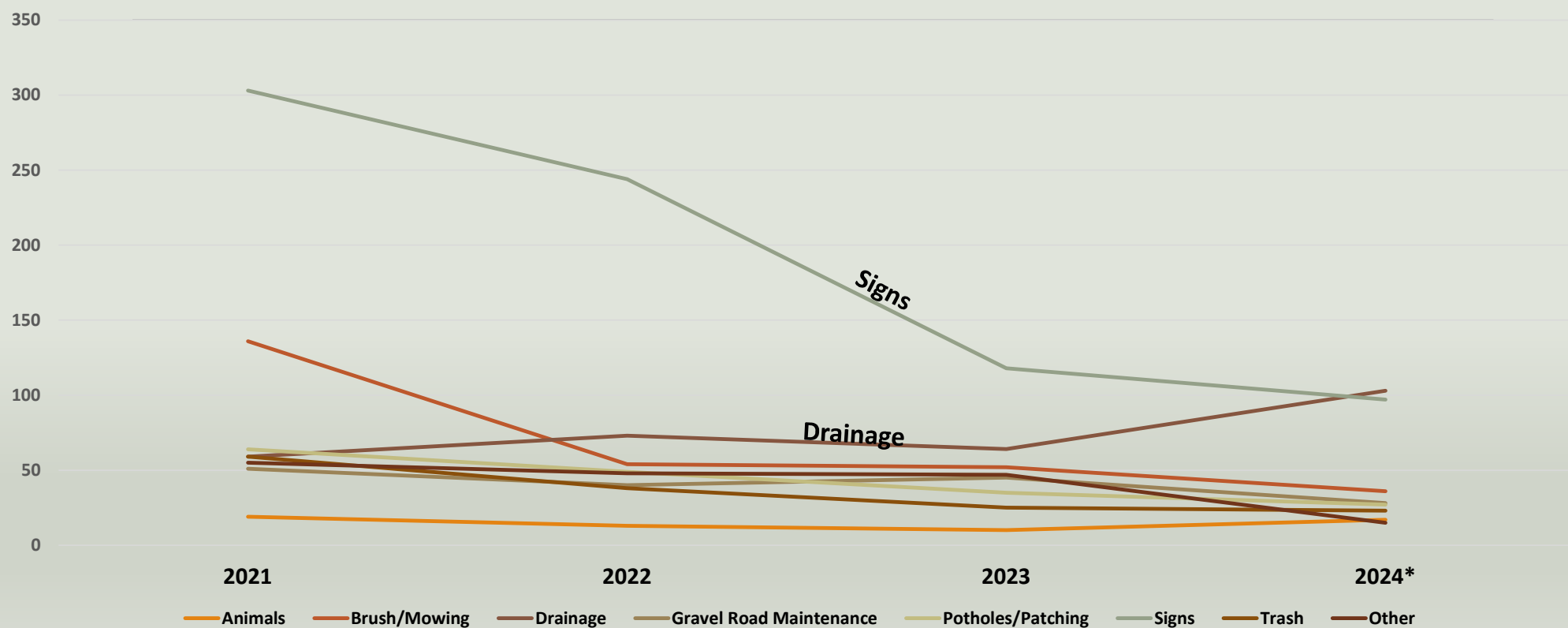


Paved Road Conditions

All roads rated 1 through 10. Failed road is a 1, “new” road is a 10.

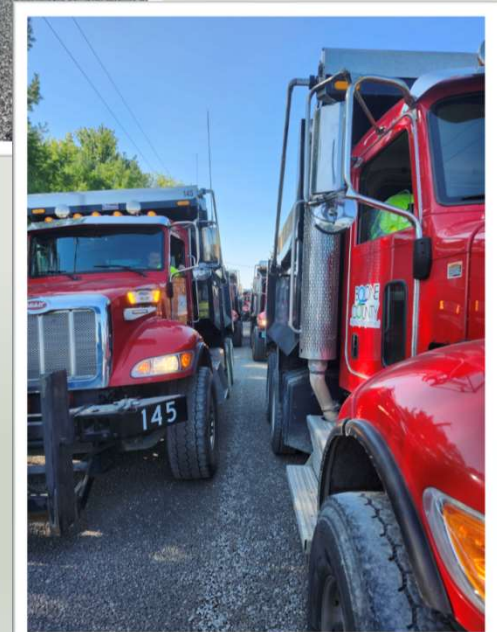


Work Order Trends 2021-2024



2025 Planned Projects

Treatment	Length
Single Chip & Seal	4.53 miles
Double Chip & Seal	22.83 miles
Conversion	4 miles
CMA Overlay	2.52 miles
Rejuvenator	41 miles
Liquid Road	1 mile
Microsurfacing	7 miles
Crack fill	28.35 miles
HMA Resurfacing	7.3 miles
Bridge Deck Sealing	14 Bridges

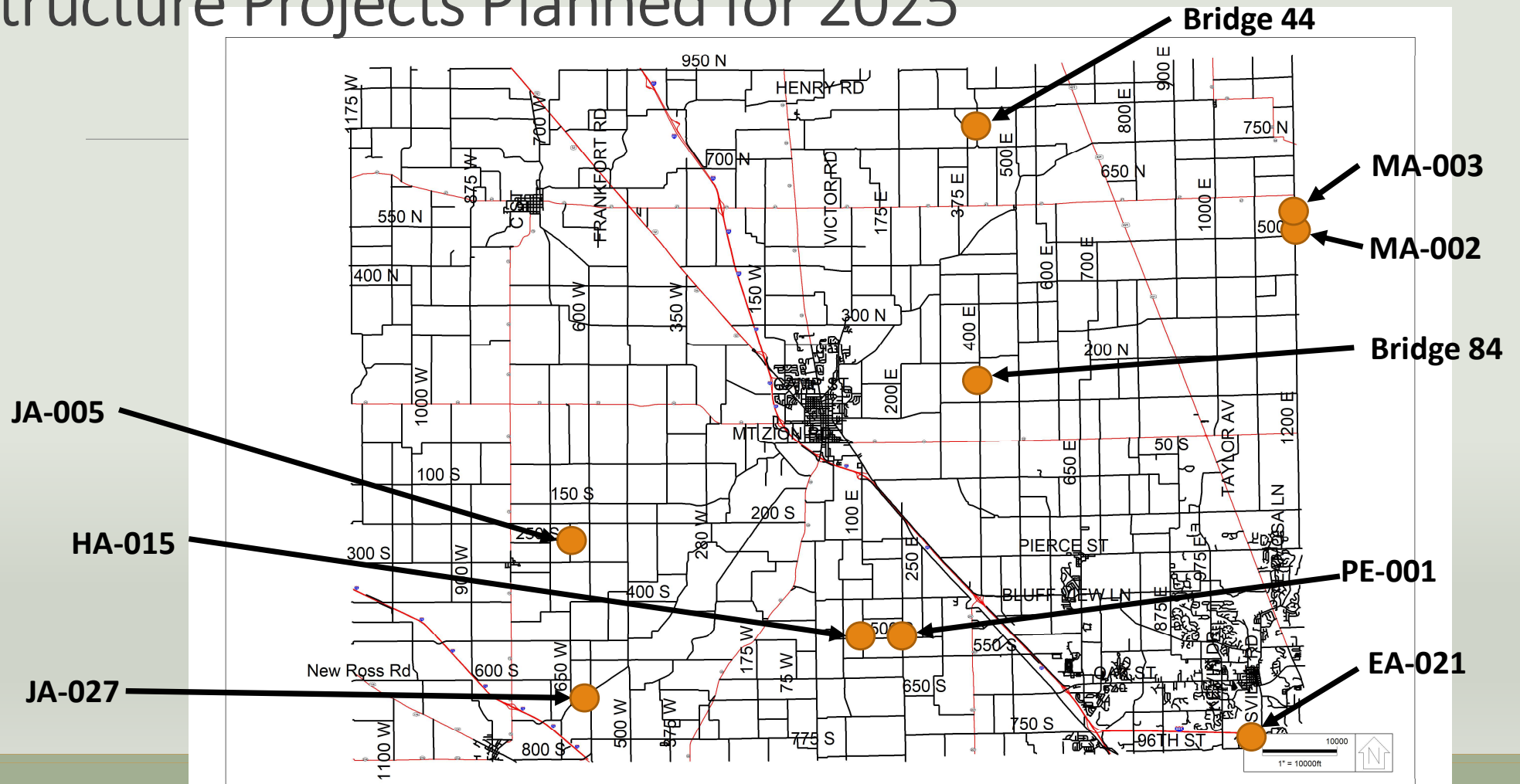


2025 Planned Projects

Bridge Replacement	84, CR 400 E N of CR 100 N
Bridge Rehabilitation	44, CR 400 E N of CR 750 N
Small Structure Replacements	EA-021, Pineview Dr. N of 96 th St HA-015, CR 500 S W of CR 100 E PE-001, CR 500 S E of 100 E MA-002, CR 1200 E S of SR 47 MA-003, CR 1200 E S of SR 47 JA-005, CR 650 W S of CR 200 S JA-027, Mid-Jamestown Road W of CR 600 W



Structure Projects Planned for 2025



2025 Planned Projects

Countywide Sign Replacement

Approximately 3,500 Signs

Regulatory

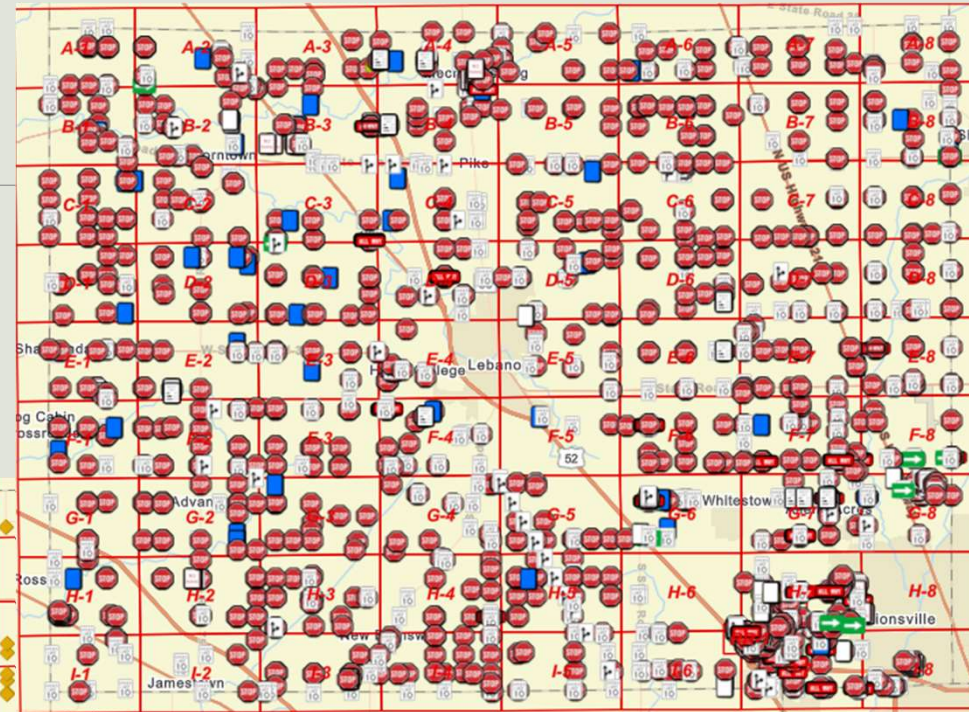
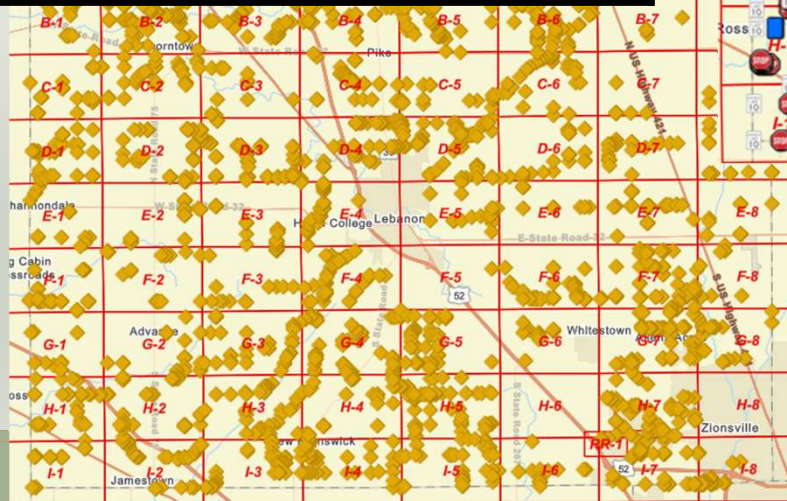
Speed limit, Stop, Yield

Warning

Black markings on yellow signs

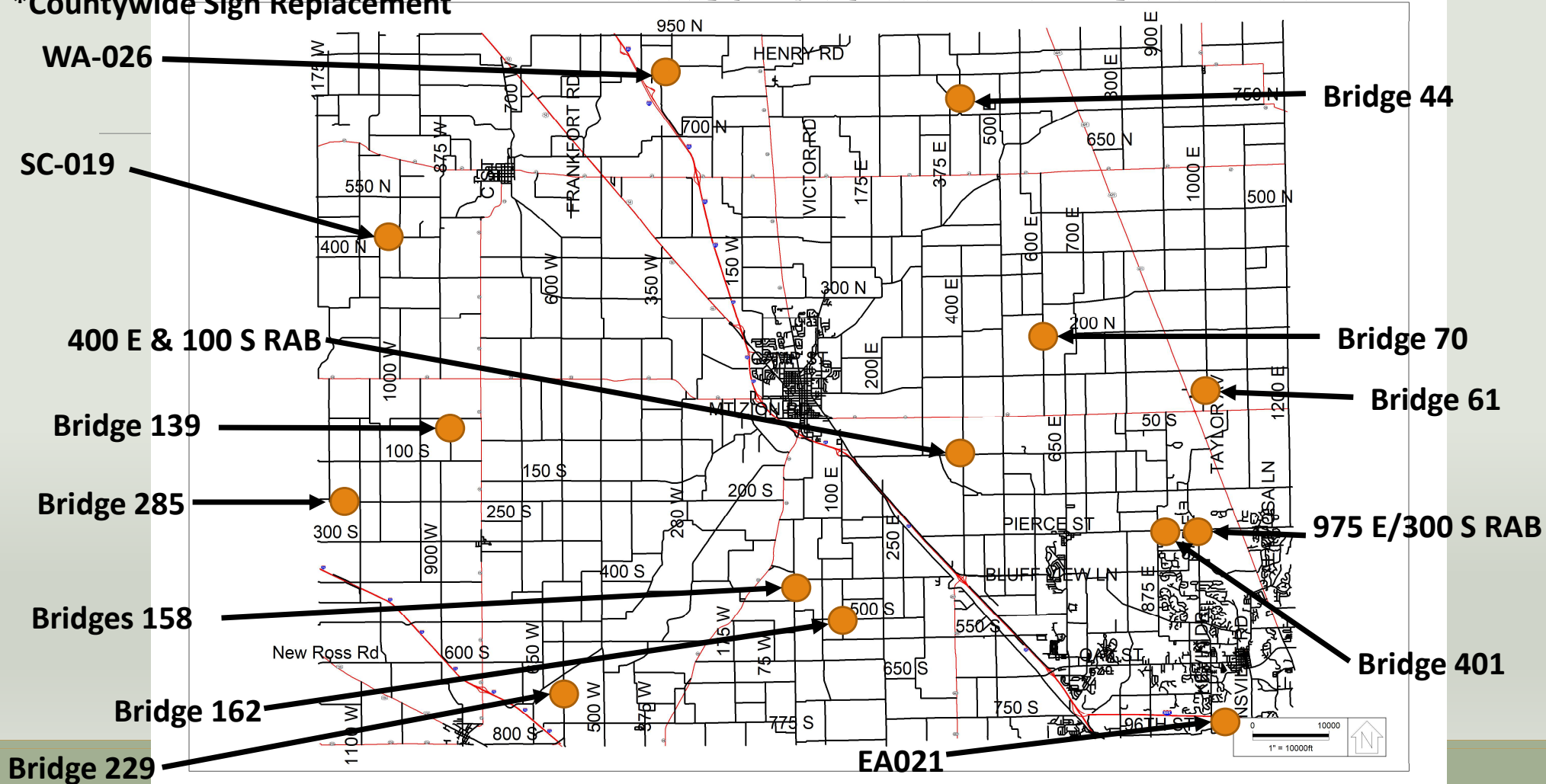
Construction has begun

100% Federal Funds for CN Phase



- *Countywide Pavement Markings
- *Countywide Sign Replacement

*Countywide Sign Replacement



2020 BOND FUND PROJECTS

Small Structures

WO-002 300 S between 780 E and 800 E
JE-017 900 W between 100 S and 200 S
MA-030 750 N between 1000 E and SR 38
CL-030 400 E between 750 N and 850 N
JE-016 200 S between 700 W and SR 75
MA-033 750 E between 275 N and 400 N
JE-020 50 S between 700 W and SR 75

Bridges

175 CR 350S over Smith Ditch
311 Williams Street over Prairie Creek
174 CR 125E over Smith Ditch
217 Templin Road over Little Eagle Creek

Gravel Road Conversions

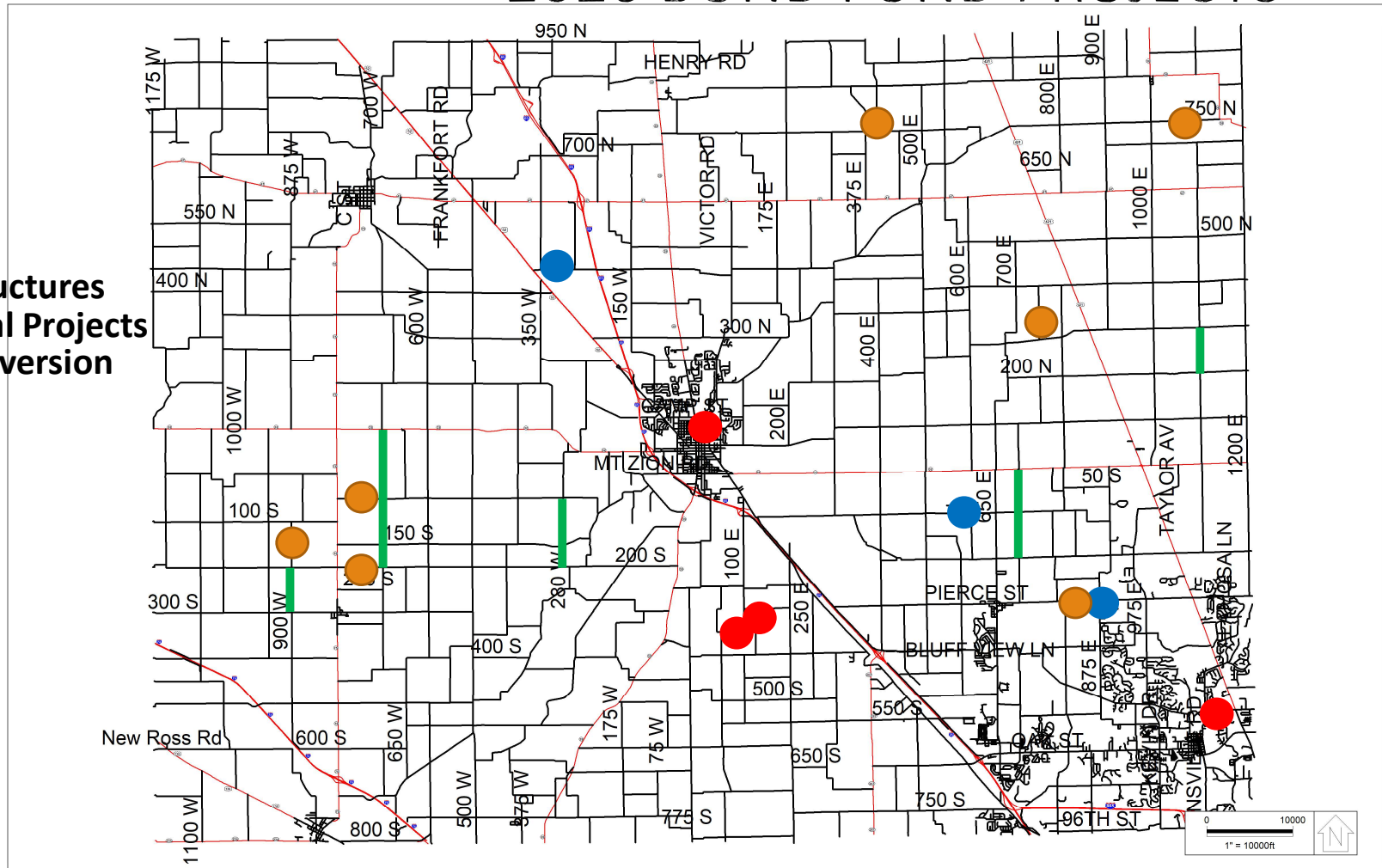
300W between 200S and 50S
900W between 200S and 300S
700W between SR 32 and 200S
1100E between 100N and 200N
700E between SR 32 and 200S

Additional Projects Completed using 2020 Bond Funds

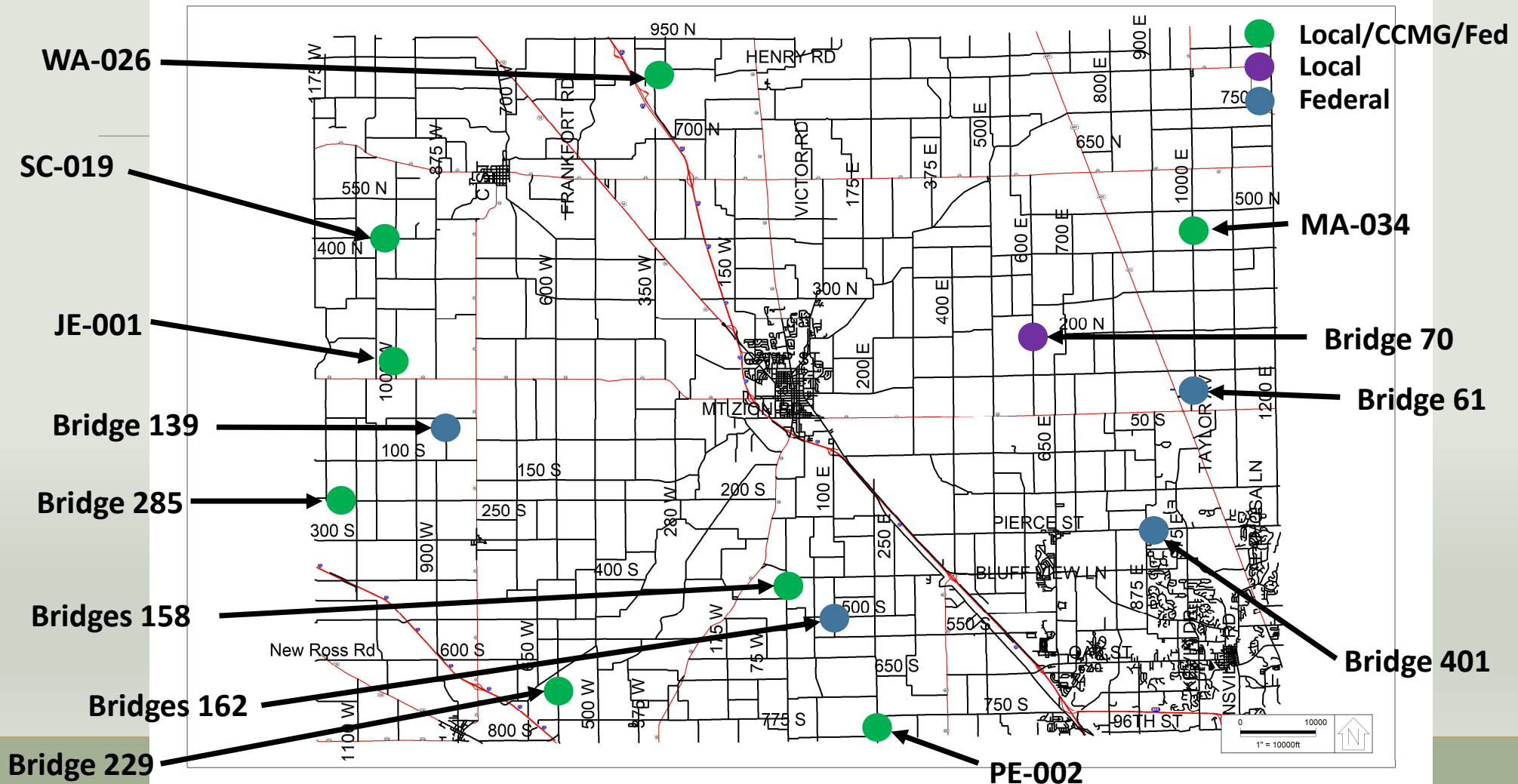
- WO-016 100 S between 500 E and 600 E
- WA-030 450 N between 350 W and 275 W
- UN-015 300 S between 800 E and 875 E

2020 BOND FUND PROJECTS

- Bridges
- Small Structures
- Additional Projects
- Road Conversion



POTENTIAL FUTURE BOND FUND PROJECTS



OUR MISSION:

Eliminate fatal and serious injuries resulting from traffic crashes, making decisions based on their ability to reach zero deaths on Boone County's transportation system.

Get Home Safe

Questions?

