

SECTION CORNER RECORD

NE 600-1100

BOONE COUNTY SURVEYOR'S OFFICE

State Plane grid coordinates NAD83 (2011):

Corner 1: North: 1778846.74 East: 3182739.26 (U.S. survey feet)

Corner 2: North: 1778844.45 East: 3182662.10 (U.S. survey feet)

Type of monuments (1&2): Brass plug INDOT Type B Monument

Depth: One inch below adjacent road surface

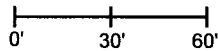
Indiana tie card references:

IN02_T20NR2E35_80 IN02_T20NR2E36_72

IN02_T19NR2E02_08 IN02_T19NR2E01_00

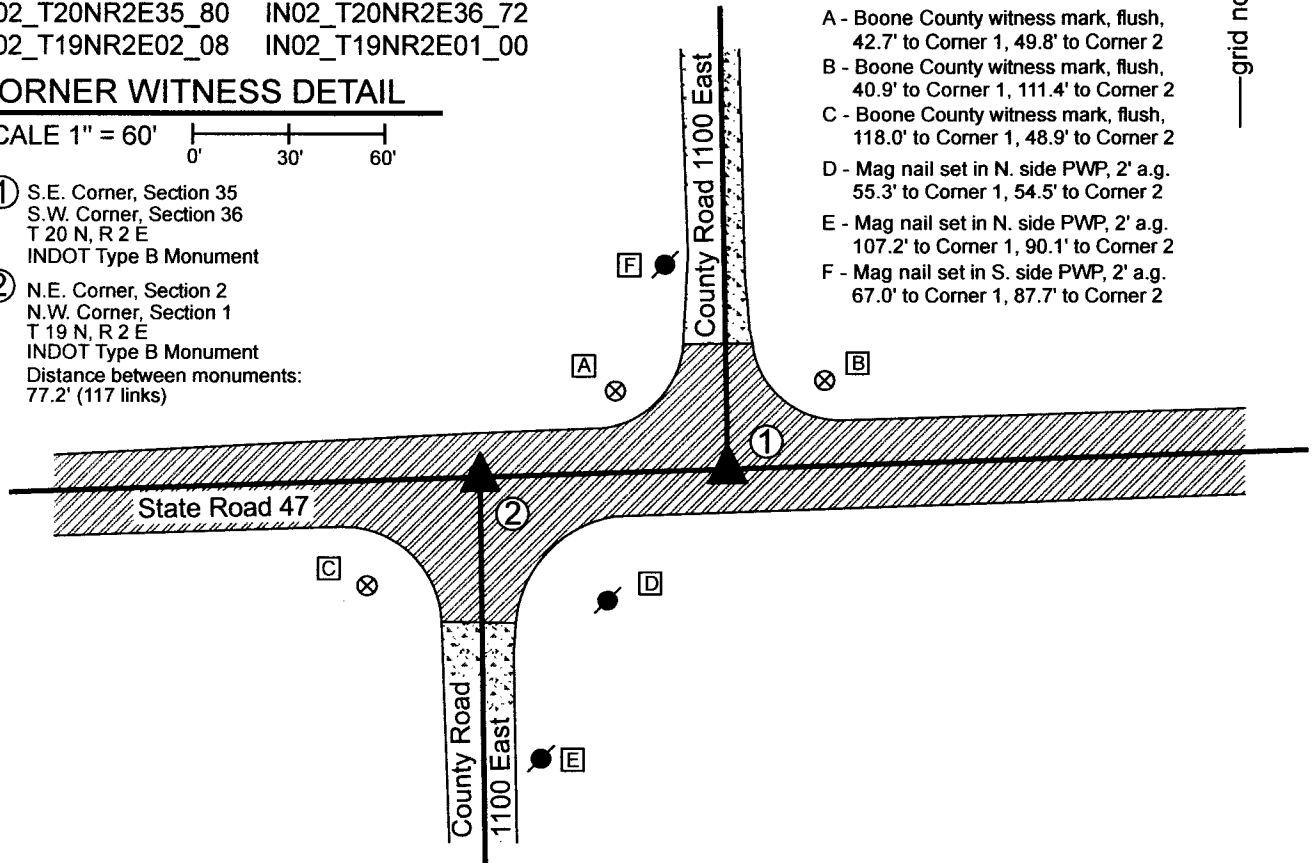
CORNER WITNESS DETAIL

SCALE 1" = 60'



- ① S.E. Corner, Section 35
S.W. Corner, Section 36
T 20 N, R 2 E
INDOT Type B Monument
- ② N.E. Corner, Section 2
N.W. Corner, Section 1
T 19 N, R 2 E
INDOT Type B Monument
Distance between monuments:
77.2' (117 links)

- A - Boone County witness mark, flush,
42.7' to Corner 1, 49.8' to Corner 2
- B - Boone County witness mark, flush,
40.9' to Corner 1, 111.4' to Corner 2
- C - Boone County witness mark, flush,
118.0' to Corner 1, 48.9' to Corner 2
- D - Mag nail set in N. side PWP, 2' a.g.
55.3' to Corner 1, 54.5' to Corner 2
- E - Mag nail set in N. side PWP, 2' a.g.
107.2' to Corner 1, 90.1' to Corner 2
- F - Mag nail set in S. side PWP, 2' a.g.
67.0' to Corner 1, 87.7' to Corner 2

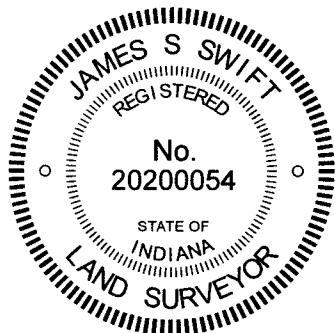


The INDOT Type B monuments were found in place and held as marking the respective corners.

Corner 1 was originally established in 1819. Corner 2 was established in 1821 at a point 117 links west of Corner 1.

A BCS record of March 25, 1853 states, with respect to Corner 1, "A stone set in the road." A BCS record of April 5, 1882 states, with respect to Corner 2, "Corner stone marked +."

A BCS tie card dated August 22, 2002 shows both corners as railroad spikes in the center of State Road 47 and in line with the centers of County Road 1100 East to the north and south, respectively. The document shows the monuments at 77.22 feet apart, equal to the federal closing distance of 117 links. The Type B monuments found in the field appear to be in the same positions as the spikes referenced on the 2002 tie card. No excavation was performed as these corners fall in a state road. The found Type B monuments agree with the local evidence of the corners, being at the intersections of the east-west state roads and north-south county roads. The Type B monuments were held as marking the corners.



Kenneth E. Hedge
 Kenneth E. Hedge, County Surveyor

James S. Swift
 James S. Swift, IN LS 20200054

December 14, 2022

Marion Township

Section 35 T20N, R2E	Section 36 T20N, R2E
Section 2 T19N, R2E	Section 1 T19N, R2E

SECTION CORNER RECORD

NE 650-1100

BOONE COUNTY SURVEYOR'S OFFICE

State Plane grid coordinates NAD83 (CORS96):

North: 1781493.14 East: 3182688.31 (U.S. survey feet)

Type of monument: Harrison, 4" disk 'Section Corner'

Depth: six inches below adjacent gravel road surface

Indiana tie card references:

IN02_T20NR2E35_44

IN02_T20NR2E36_36

CORNER WITNESS DETAIL

SCALE 1" = 40'



A - Boone County witness mark, flush, 41.75'

B - Mag nail set in W. side power pole, 2' a.g., 67.31'

C - Mag nail set in W. side power pole, 2' a.g., 14.89'

Boone County witness mark is a 3/8" diameter x 2' long rebar bearing a metal cap stamped "Boone County Witness Point."

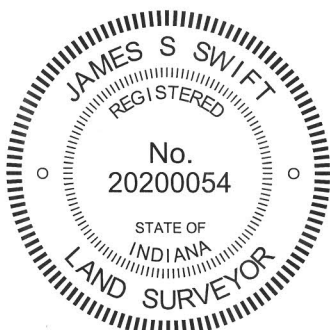


The harrison monument was set in place of a stone found.

A BCS record of February 21-22, 1872 states "found rock at corner (saw one stump.)" A BCS tie card dated August 11, 1974 states "no stone found."

This corner was excavated on July 17, 2013. Prior to excavation a rebar with a red cap (markings illegible) was found at 3 inches deep in the gravel road. No ties remain from the 1974 tie card and the source of the capped rebar is not known. Excavation revealed a stone found at 4 inches deep. The stone was removed, measured and found to be 21 inches tall by 11 inches N-S by 7 inches E-W. No specific marks were found on the stone, though it had a clear high point and fit the characteristics of other corner stones found marking corners throughout the county, being vertical and embedded in the clay layer below the road. The stone was accepted as being the best available evidence of the corner. The harrison monument was set in place of the high point of the stone. The rebar, removed during excavation, had been 0.7 of a foot south of the top, high point of the stone.

This corner was originally established as a wood post in 1821.



Kenneth E. Hedge

 Kenneth E. Hedge, County Surveyor

James S. Swift

 James S. Swift, IN LS 20200054
 February 5, 2015

Marion Township

Section 35 T20N, R2E	▲	Section 36 T20N, R2E
-------------------------	---	-------------------------

PHOTOGRAPHIC DOCUMENTATION

Date of photography: July 17, 2013

View of the stone as first exposed.



The stone removed from the road.



View of the stone from the south, looking north along County Road 1100 East.



View of the stone from the west, looking east along County Road 1100 East.



For details and documentation, refer to related sheet "Section Corner Record."

SECTION CORNER RECORD

NE 600-1150

BOONE COUNTY SURVEYOR'S OFFICE

State Plane grid coordinates NAD83 (2011):

Corner 1: North: 1778937.53 East: 3185391.66 (U.S. survey feet)

Corner 2: North: 1778936.35 East: 3185357.11 (U.S. survey feet)

Type of monument: Mag Nail with aluminum washer stamped 'Boone County Surveyor'

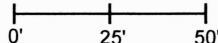
Depth: Flush with adjacent road surface

Indiana tie card references:

IN02_T20NR2E36_76 IN02_T19NR2E01_04

CORNER WITNESS DETAIL

SCALE 1" = 50'



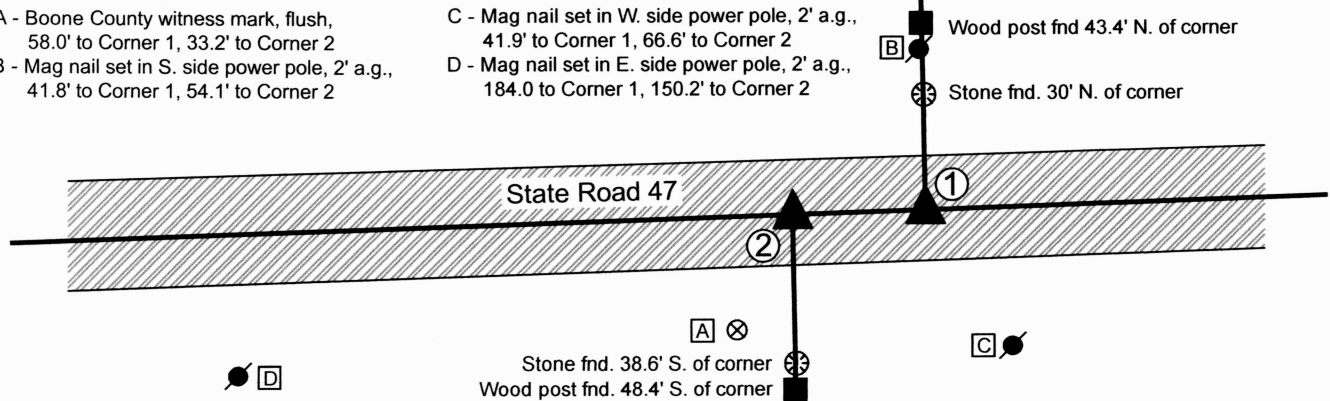
A - Boone County witness mark, flush, 58.0' to Corner 1, 33.2' to Corner 2

B - Mag nail set in S. side power pole, 2' a.g., 41.8' to Corner 1, 54.1' to Corner 2

C - Mag nail set in W. side power pole, 2' a.g., 41.9' to Corner 1, 66.6' to Corner 2

D - Mag nail set in E. side power pole, 2' a.g., 184.0' to Corner 1, 150.2' to Corner 2

- ① South Quarter Corner Section 36, T 20 N, R 2 E Mag Nail Set
 - ② North Quarter Corner Section 1, T 19 N, R 2 E Mag Nail Set
- Distance between monuments: 34.57'



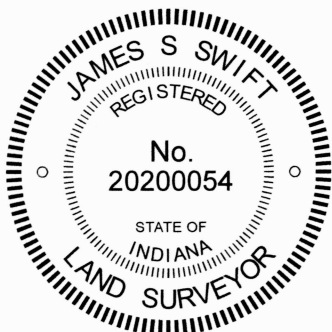
The Mag Nails were set at computed positions per evidence of the corners.

Corner 1 is an original federal corner, set in 1819 as the south line of T20N, R2E was being surveyed. Corner 2 is not an original federal corner.

A BCS record of September 21-22, 1870 calls Corner 2 as "A stone that was set." A BCS record of February 21-22, 1872 states, with respect to Corner 1, "Set two Rocks. One 8.7.6 + Top One 15.9.8 +. Cor. for Sect. One, T19 West 48 [links]." Note: 48 links = 31.68 feet. The INDOT plans for State Road 47 (Project No. 443, Sec. B, Thorntown-Sheridan State Road) do not show these corners, but do show fences to the north and south, both marked P.L. (property line) at 33.6 feet apart, east-west, per stationing. The average federal closing distance, based on the northeast and northwest corners of Section 1, is 58.5 links = 38.61 feet.

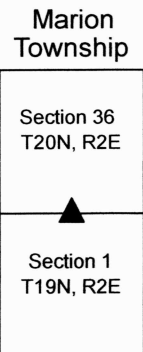
Evidence of the occupied lines to the north and south were found in the form of wood posts found on the north and south sides of the road. The post on the south side of the road appears to be ancient and is in-line with a field division to the south. A stone, embedded in the ground, but with the top exposed at ground level, was found immediately north of this post. The post on the north side of the road is also old, but does not appear quite as old as the post on the south side of the road. This post has fence cut to the north and west, has similarly sized brace posts to the north and west, and is in-line with a general mow line to the north. A stone, also embedded in the ground but exposed at ground level, was found south of the post. The approximate top, center of the stone is slightly east (0.7 foot) of this post.

The two posts are separated by 34.6 feet, east-west. This is approximately 3 feet more than the separation called for in the 1872 BCS record, 2 feet more than shown on the INDOT plans, and 4 feet less than the computed average federal closing distance. No surveys were found in the Boone County Recorder's Office calling for these corners and no recent BCS tie cards were found indicating the positions of the corners. No monuments were found marking the corners and none are known to have existed previously, in recent times. As this is a state road, no excavation was performed, hence the stones called for in the 1872 record were not found. The evidence of the existing posts was held to determine the positions of the corners. The 1938 road plans show a no-curve P.I. in the vicinity of this corner. It was observed that a straight line connecting the southeast and southwest corner of Section 36 falls along the physical center of the road in the immediate vicinity of the corners. The corners were established in-line with the posts to the north and south, respectively, in the center of the road, on a straight line connecting the southeast and southwest corners of Section 36. Uncertainties in the east-west dimension of up to 4 feet in both directions may be attributed to the positions of these corners, based on the original federal dimensions and 1872 BCS records.



Carol Cunningham
Carol Cunningham, County Surveyor

James S. Swift
James S. Swift, IN LS 20200054
August 31, 2023



SECTION CORNER RECORD

BOONE COUNTY SURVEYOR'S OFFICE

NE 600-1200

State Plane grid coordinates NAD83 (2011):
 North: 1779028.19 East: 3188040.23 (U.S. survey feet)

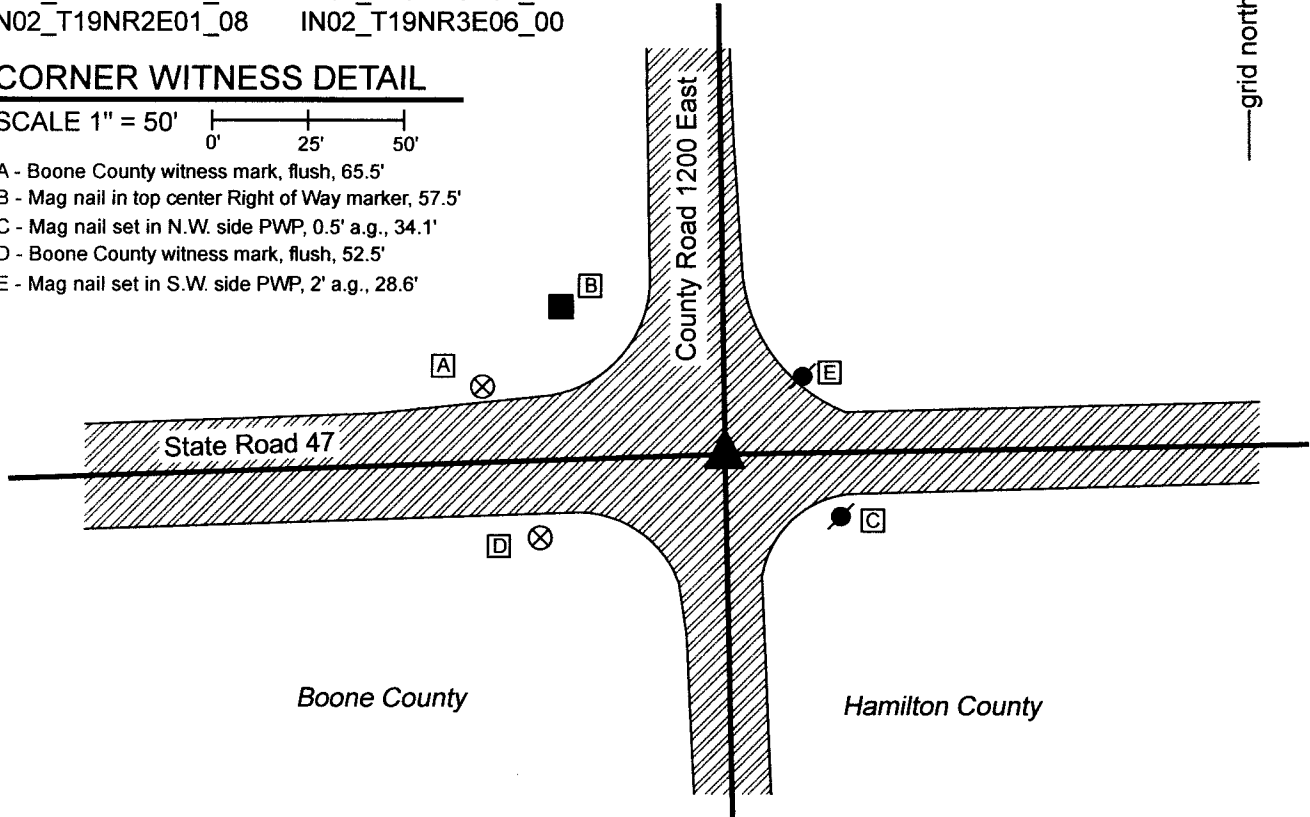
Type of monument: Harrison within monument box
 Depth: 4" below adjacent road surface

Indiana tie card references:
 IN02_T20NR2E36_80 IN02_T20NR3E31_72
 IN02_T19NR2E01_08 IN02_T19NR3E06_00

CORNER WITNESS DETAIL

SCALE 1" = 50'

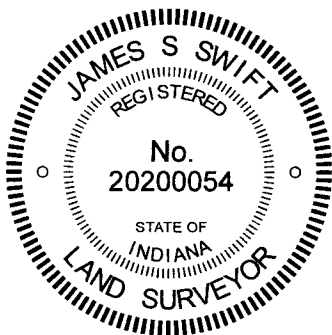
- A - Boone County witness mark, flush, 65.5'
- B - Mag nail in top center Right of Way marker, 57.5'
- C - Mag nail set in N.W. side PWP, 0.5' a.g., 34.1'
- D - Boone County witness mark, flush, 52.5'
- E - Mag nail set in S.W. side PWP, 2' a.g., 28.6'



The Harrison monument in a cast iron box was found in place and held as marking the corner. This corner was originally established as a common corner to four townships in 1819. A BCS record of September 21-22, 1870 states, with respect to the corner, "Reestablished from Beech. Found rotten stake. Set rock 5. 3-1/2 by 3 +." No recent BCS tie cards were found referencing this corner. A Hamilton County Surveyor Corner Record sheet dated January 21, 2015 shows the corner as "HARRISON IN CASTING." This document references a history of the corner wherein a Harrison monument was set in 1990 and reset in 2003. Prior to that, a boat spike and found, evidently over a spike, in 1973. The found Harrison monument is 4 inches below grade and is within a cast iron box typically associated with an INDOT Type B monument. The position of the monument fits with local evidence of the corner, being at the intersection of the east-west state road and north-south county road. No excavation was performed at this corner as it falls within a state road. The Harrison monument was held as marking the corner.

Marion Township
Boone County

Adams Township
Hamilton County



Kenneth E. Hedge
 Kenneth E. Hedge, County Surveyor

James S. Swift
 James S. Swift, IN LS 20200054
 December 14, 2022

Section 36 T20N, R2E	Section 31 T20N, R3E
Section 1 T19N, R2E	Section 6 T20N, R3E

SECTION CORNER RECORD

NE 700-1100

BOONE COUNTY SURVEYOR'S OFFICE

State Plane grid coordinates NAD83 (CORS96):

North: 1784130.04 East: 3182640.01 (U.S. survey feet)

Type of monument: Harrison, 4" disk 'Section Corner'

Depth: six inches below adjacent gravel road surface

Indiana tie card references:

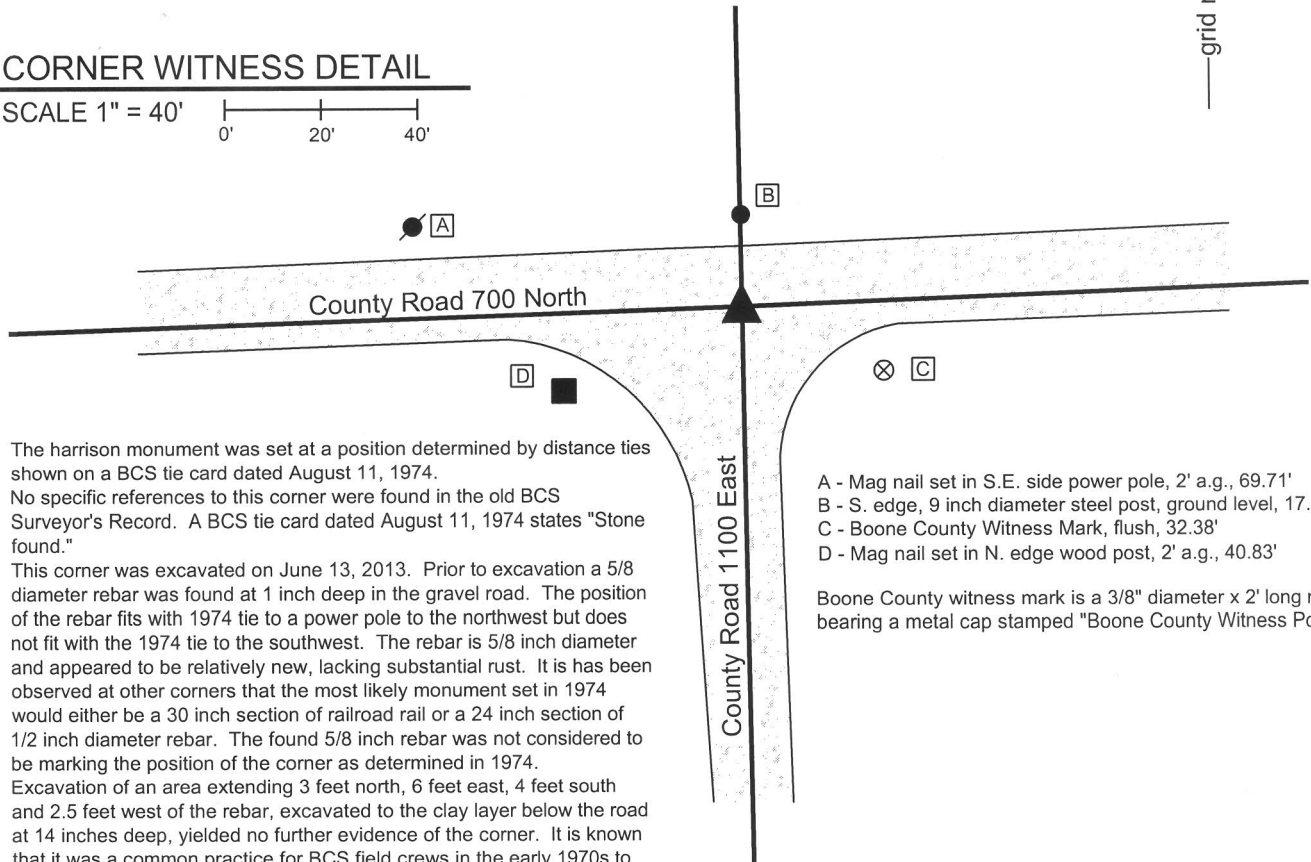
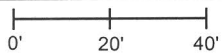
IN02_T20NR2E26_80 IN02_T20NR2E25_72

IN02_T20NR2E35_08 IN02_T20NR2E36_00



CORNER WITNESS DETAIL

SCALE 1" = 40'



The harrison monument was set at a position determined by distance ties shown on a BCS tie card dated August 11, 1974.

No specific references to this corner were found in the old BCS Surveyor's Record. A BCS tie card dated August 11, 1974 states "Stone found."

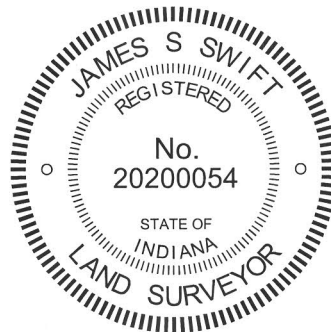
This corner was excavated on June 13, 2013. Prior to excavation a 5/8 diameter rebar was found at 1 inch deep in the gravel road. The position of the rebar fits with 1974 tie to a power pole to the northwest but does not fit with the 1974 tie to the southwest. The rebar is 5/8 inch diameter and appeared to be relatively new, lacking substantial rust. It is has been observed at other corners that the most likely monument set in 1974 would either be a 30 inch section of railroad rail or a 24 inch section of 1/2 inch diameter rebar. The found 5/8 inch rebar was not considered to be marking the position of the corner as determined in 1974.

Excavation of an area extending 3 feet north, 6 feet east, 4 feet south and 2.5 feet west of the rebar, excavated to the clay layer below the road at 14 inches deep, yielded no further evidence of the corner. It is known that it was a common practice for BCS field crews in the early 1970s to remove stones, if found, and replace them with either a railroad rail of a 1/2 inch diameter rebar. It is reasonable to expect that the stone found in 1974 was removed and also reasonable to expect that the monument set in its place may have been removed by a road grader at some point in the intervening 39 years. The position of the corner determined in 1974 was reconstructed using the two distance remaining distance ties, holding the southeast edge of the power pole and the northeast corner of the wood post, as graphically demonstrated on the 1974 tie card. A harrison monument was set at this position. The 5/8 inch diameter rebar, removed during excavation, had been 1 foot north and 2 feet east of this position.

This corner was originally established as a wood post in 1821.

- A - Mag nail set in S.E. side power pole, 2' a.g., 69.71'
- B - S. edge, 9 inch diameter steel post, ground level, 17.43'
- C - Boone County Witness Mark, flush, 32.38'
- D - Mag nail set in N. edge wood post, 2' a.g., 40.83'

Boone County witness mark is a 3/8" diameter x 2' long rebar bearing a metal cap stamped "Boone County Witness Point."



Marion Township

Section 26 T20N, R2E	Section 25 T20N, R2E
Section 35 T20N, R2E	Section 36 T20N, R2E

Kenneth E. Hedge
Kenneth E. Hedge, County Surveyor

James S. Swift
James S. Swift, IN LS 20200054

February 5, 2015

SECTION CORNER RECORD

NE 700-1150

BOONE COUNTY SURVEYOR'S OFFICE

State Plane grid coordinates NAD83 (CORS96):

North: 1784236.96 East: 3185302.95 (U.S. survey feet)

Type of monument: Harrison, 4" disk 'Section Corner'

Depth: four inches below the adjacent gravel road surface

Indiana tie card references:

IN02_T20NR2E25_76

IN02_T20NR2E36_04



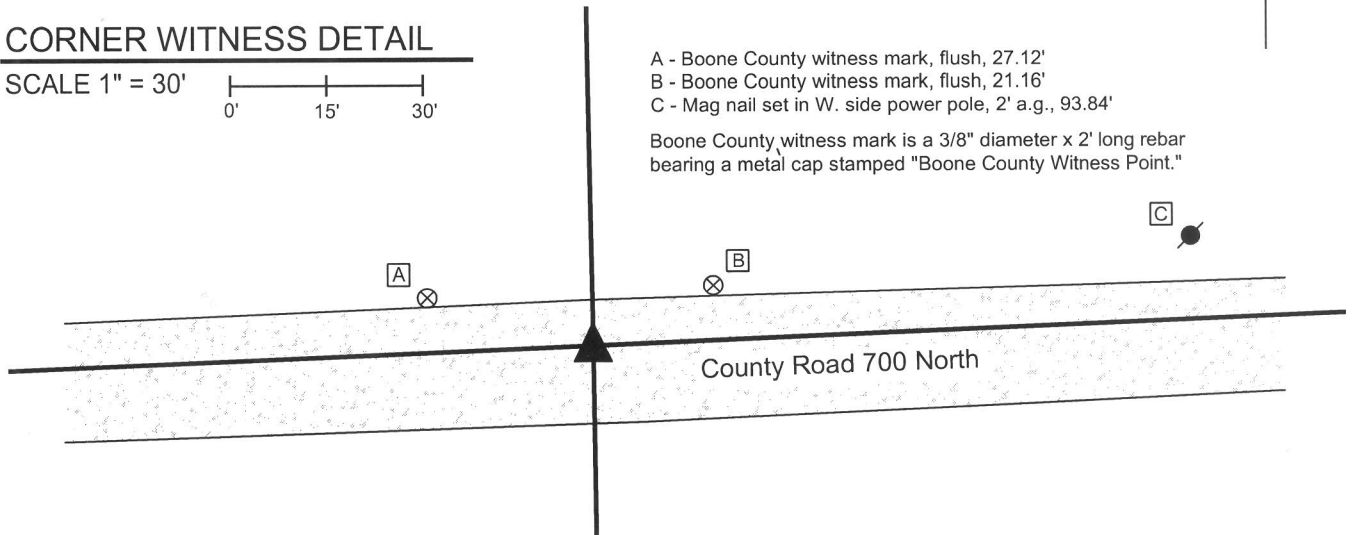
CORNER WITNESS DETAIL

SCALE 1" = 30'



- A - Boone County witness mark, flush, 27.12'
- B - Boone County witness mark, flush, 21.16'
- C - Mag nail set in W. side power pole, 2' a.g., 93.84'

Boone County witness mark is a 3/8" diameter x 2' long rebar bearing a metal cap stamped "Boone County Witness Point."



The harrison monument was set in place of a stone found.

No specific descriptions of this corner were found in the old BCS Surveyor's Record, though the corner is mentioned as the terminal point for measurements in records of 1851, 1872 and 1891, indicating that some object was present from which to measure. The 1876 county atlas shows a road along the E-W section line, hence the measurement reference in the 1891 record, at least, would indicate that the object was present in the road. A BCS tie card dated August 11, 1974 states "no stone found" and shows the corner as being at the midpoint between posts on each side of County Road 700 North. A BCS tie card dated January 18, 1994 shows the corner as a metal fence post in the center of County Road 700 North with no documentation of source.

This corner was excavated on September 18, 2013. Prior to excavation a section of steel "T-post" was found flush with the surface of the gravel road. Excavation revealed a stone found at 5 inches deep, west of the steel post. The stone was leaning northeast as originally found, appearing to have been hit by a road grader. The base of the stone was fully embedded in the clay layer below the road. Though leaning, the stone did not appear to be disturbed from its original position at the base. Stood up in its natural orientation the stone was vertical and the top of the stone was flush with the surface of the road. The road bed in this area was found to be 3 inches of gravel with a dense layer of clay below. Hence the stone, as stood up, was embedded in the clay layer, protruding 3 inches into the road bed. This is typical of many corner stones found throughout the county. The stone was removed from the road, measured and found to be 15 inches tall by 8 inches 5 inches N-S by 8 inches E-W. As stood up, the stone had a distinct high point. An etched mark was vaguely visible but not possible to confirm due to the apparent damage to the top of the stone by being hit by the road grader. The stone was accepted as the best evidence of the original position of the corner. A harrison monument was set in place of the stone at the position of the distinct high point, as stood up. The steel post was found to be 16 inches long, painted red and did not appear to be substantially aged, having minimal rust and deterioration. The post had been 2.0 feet east and 0.6 foot south of the stone and was removed during excavation.

This corner was originally established as a wood post in 1821.



Kenneth E. Hedge
Kenneth E. Hedge, County Surveyor

James S. Swift
James S. Swift, IN LS 20200054

February 5, 2015

Marion Township

Section 25
T20N, R2E

Section 36
T20N, R2E

PHOTOGRAPHIC DOCUMENTATION

Date of photography: September 18, 2014

View of the stone as first exposed.



View of the stone from the north.



View from the east, looking across the stone and east along County Road 700 North.



View of the stone from the west.



View from the east, close-up.



For details and documentation, refer to related sheet "Section Corner Record."