

SECTION CORNER RECORD

NE 600-500

BOONE COUNTY SURVEYOR'S OFFICE

State Plane grid coordinates NAD83 (2011):

Corner 1: North: 1777674.27 East: 3150689.51 (U.S. survey feet)

Corner 2: North: 1777672.82 East: 3150610.28 (U.S. survey feet)

Type of monument: INDOT Type B, plug in monument box

Depth: Flush with adjacent road surface

① S.E. Corner, Section 35
S.W. Corner, Section 36
T 20 N, R 1 E

② N.E. Corner, Section 2
N.W. Corner, Section 1
T 19 N, R 1 E

Distance between monuments: 79.2'
Original federal offset: 120 links (79.2')

Indiana tie card references:

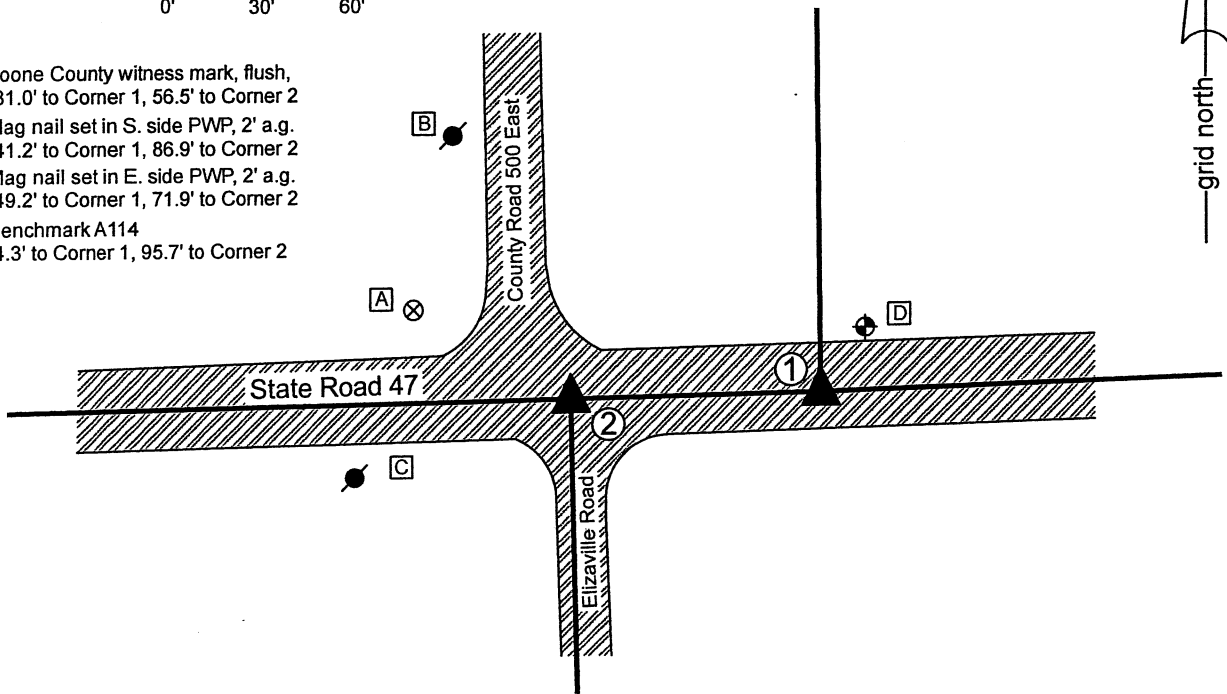
IN02_T20NR1E35_80 IN02_T20NR1E36_72

IN02_T19NR1E02_08 IN02_T19NR1E01_00

CORNER WITNESS DETAIL

SCALE 1" = 60'

- A - Boone County witness mark, flush, 131.0' to Corner 1, 56.5' to Corner 2
- B - Mag nail set in S. side PWP, 2' a.g. 141.2' to Corner 1, 86.9' to Corner 2
- C - Mag nail set in E. side PWP, 2' a.g. 149.2' to Corner 1, 71.9' to Corner 2
- D - Benchmark A114 24.3' to Corner 1, 95.7' to Corner 2

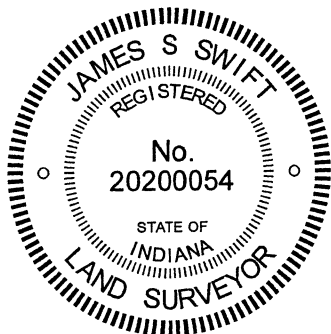


The INDOT Type B monuments were found in place and held as marking the respective corners.

A BCS record of November 6, 1871 states, with respect to Corner 1, "Found point from stump of Oak. Drove no stake." A BCS record of the same date states, with respect to Corner 2, "Reestablished 120 links West of corner, Sects. 35 & 36, set two rocks. One 10.6.6 +. Top one 16.8.8 +"

A BCS tie card dated 2004 shows both corners as PK Nails with washers, at 79.20 feet (120 links) apart. Subsequent BCS tie cards, dated June 22, 2005 show both corners as Type "C" Monuments, in the same evident positions as shown on the 2004 tie cards. The monuments found, being INDOT Type B monuments, appear to be the same monuments in the same positions as shown on the 2005 tie cards. It is noted that these monument are located at 79.2 feet apart, matching the original federal closing distance of 120 links, which also matched the 1871 BCS records. No excavation was performed at these corners, as they fall in a state highway. The corners as held by this office in 2004-2006 are held hereon.

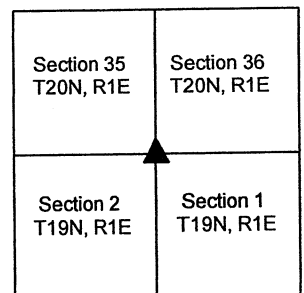
Corner 1 was originally established as a wood post in 1819. Corner 2 was originally established as a wood post in 1822.



Kenneth E. Hedge, County Surveyor

James S. Swift, IN LS 20200054
February 17, 2021

Clinton Township



SECTION CORNER RECORD

NE 600-550

BOONE COUNTY SURVEYOR'S OFFICE

State Plane grid coordinates NAD83 (2011):

Corner 1: North: 1777749.57 East: 3153334.09 (U.S. survey feet)

Corner 2: North: 1777748.51 East: 3153294.19 (U.S. survey feet)

Type of monuments (1&2): INDOT Type B, plug in monument box

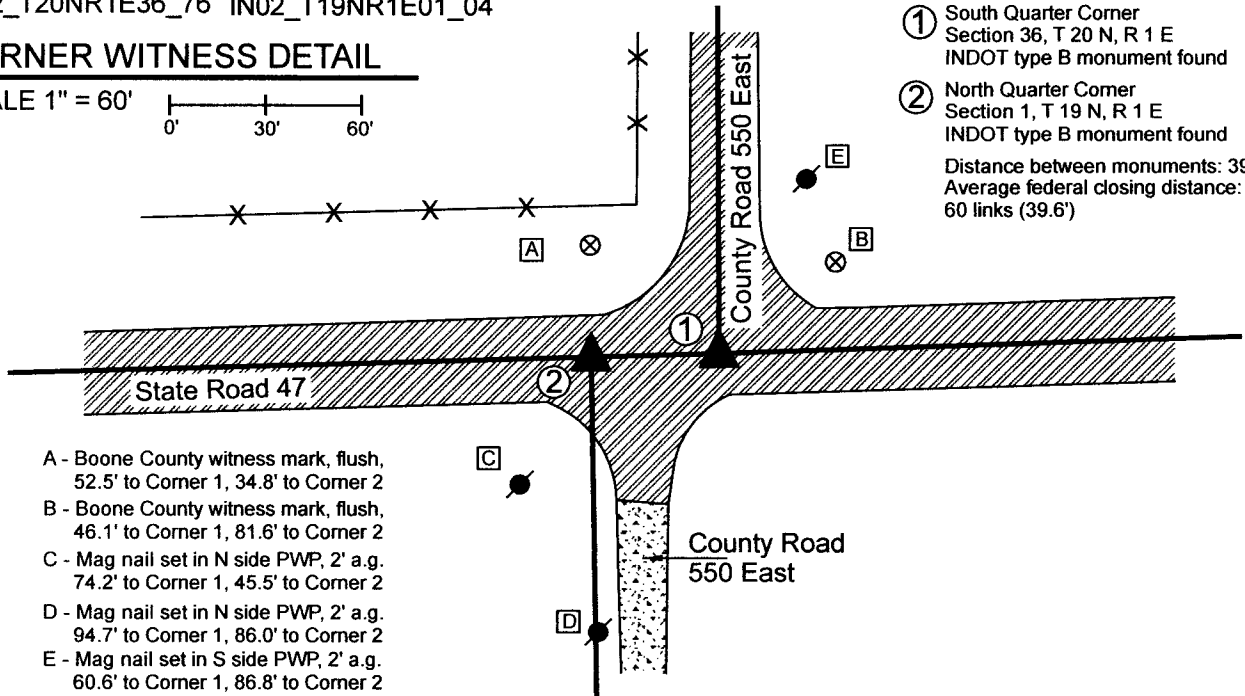
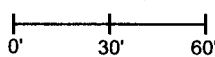
Depth: Flush with adjacent road surface

Indiana tie card references:

IN02_T20NR1E36_76 IN02_T19NR1E01_04

CORNER WITNESS DETAIL

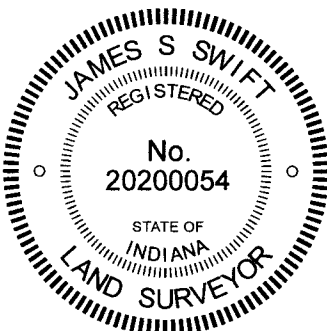
SCALE 1" = 60'



- ① South Quarter Corner
Section 36, T 20 N, R 1 E
INDOT type B monument found
 - ② North Quarter Corner
Section 1, T 19 N, R 1 E
INDOT type B monument found
- Distance between monuments: 39.91'
Average federal closing distance:
60 links (39.6')

- A - Boone County witness mark, flush,
52.5' to Corner 1, 34.8' to Corner 2
- B - Boone County witness mark, flush,
46.1' to Corner 1, 81.6' to Corner 2
- C - Mag nail set in N side PWP, 2' a.g.
74.2' to Corner 1, 45.5' to Corner 2
- D - Mag nail set in N side PWP, 2' a.g.
94.7' to Corner 1, 86.0' to Corner 2
- E - Mag nail set in S side PWP, 2' a.g.
60.6' to Corner 1, 86.8' to Corner 2

The INDOT Type B Monuments were found in place and held as marking the respective corners. Corner 1 is referenced in a BCS record for which the date is uncertain, possibly March 7, 1882 or possibly later. This record states, with respect to Corner 1, "Established 60 links East of "B" Se. 1, T 19 N, R1 E. Set Rock + 12,16,20." No specific descriptions of Corner 2 were found in this record. The separation between the two corners of 60 links represents the average of the federal closing distances at the northeast corner (0 links) and northwest corner (120 links) of Section 1. A BCS tie card dated June 22, 2005 shows both corners as Type C Monuments, separated by 38.78 feet, which almost equals the distance of 60 links (39.6 feet) referenced in the BCS record. This tie card shows the two corners as being in the center of State Road 47 and in-line with the centers of County Road 550 East to the north and south, respectively. The monuments referenced on this tie card were found undisturbed. The monuments, being INDOT Type B monuments, not Type C, are located at approximately the same distance apart from each other as represented on the tie card. The eastern of the two monuments (Corner 1) falls generally in-line with the center of County Road 550 East to the north, but the western of the two monuments (Corner 2) falls west of the center of County Road 550 East to the south, as shown on this sketch. The position of Corner 2 does, however, fit well with evidence of occupation in the form of standing fences south of S.R. 47 witnessing the quarter-quarter corners for Section 1 to the east and west of the subject corners. It appears that the tie card graphically misrepresents the relative location of the center of County Road 550 East as it bears south from S.R. 47. The line between the northeast and northwest quarters of Section 1 is west of the center of the road to the south. Otherwise, the positions of the corners as monumented fit well relative to each other, relative to the corners to the east and west, and relative to the local evidence of the original lines in the form of the east-west state road and the county road to the north. No excavation was performed at these corners, as they fall in a State Road. The found Type B monuments were held as marking the respective corners.



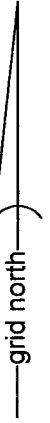
Kenneth E. Hedge
Kenneth E. Hedge, County Surveyor

James S. Swift
James S. Swift, IN LS 20200054

December 14, 2022

Clinton Township

Section 36 T20N, R1E
▲
Section 1 T19N, R1E



SECTION CORNER RECORD

NE 600-600

BOONE COUNTY SURVEYOR'S OFFICE

State Plane grid coordinates NAD83 (2011):

Corner 1: North: 1777836.81 East: 3155968.42 (U.S. survey feet)

Type of monument: Brass plug in monument box, INDOT Type B

Depth: Flush with adjacent road surface

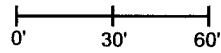
Indiana tie card references:

IN02_T20NR2E31_72 IN02_T20NR1E36_80

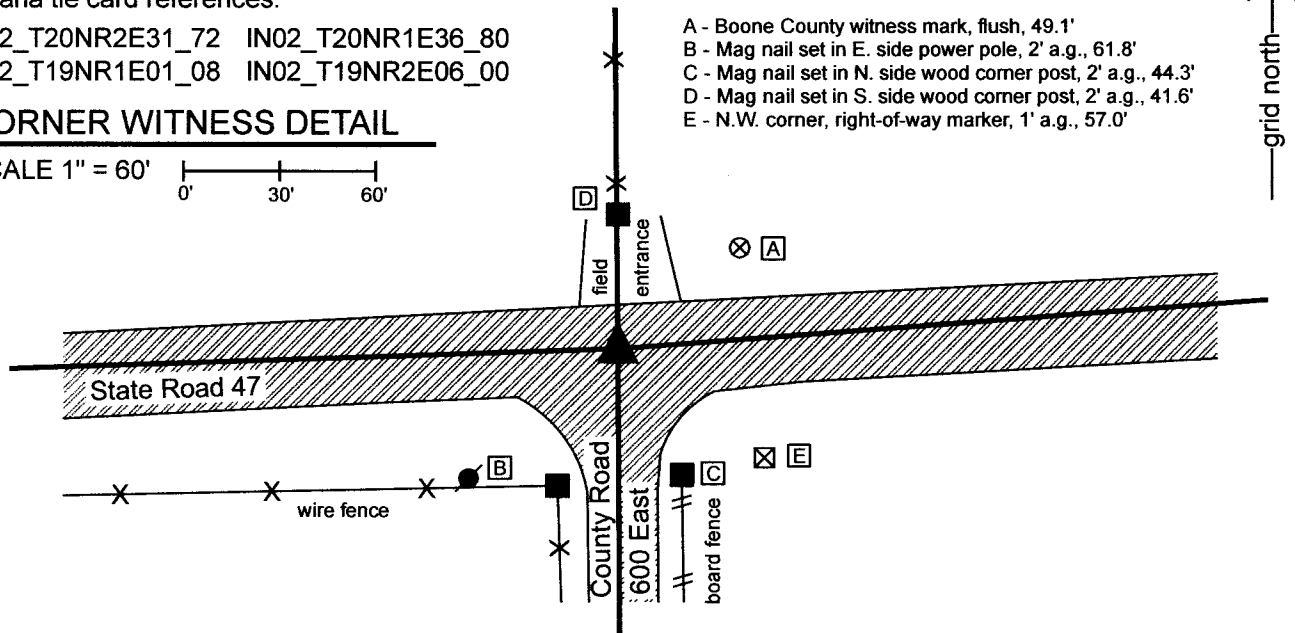
IN02_T19NR1E01_08 IN02_T19NR2E06_00

CORNER WITNESS DETAIL

SCALE 1" = 60'



- A - Boone County witness mark, flush, 49.1'
- B - Mag nail set in E. side power pole, 2' a.g., 61.8'
- C - Mag nail set in N. side wood corner post, 2' a.g., 44.3'
- D - Mag nail set in S. side wood corner post, 2' a.g., 41.6'
- E - N.W. corner, right-of-way marker, 1' a.g., 57.0'



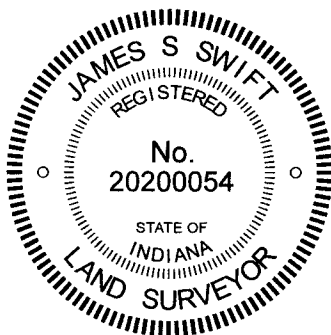
The INDOT Type B monument was found in place and held as marking the corner.

This corner represents the common corner to four townships, originally set in 1819.

A BCS entry of April 1-3, 1857 which is referenced to Section 6, T19N, R2E states "Set Rock 9 by 14 in." A BCS entry of April 15, 1872 which is referenced to Section 31, T20N, R2E states "Reestablished. Rock was set." A BCS tie card dated June 22, 2005 calls the corner as a Type C Monument. Several surveys by Jerry L. Carter, including surveys recorded as Instruments 0206765 and 0208420 (Boone County Recorder) show the corner as "PK Nail/Rebar(fnd)." The current descriptions of several of the various properties in the northwest quarter of Section 6 appear to have been created from these surveys or other surveys by Carter. The monument found, being an INDOT Type B monument, appears to be the same monument as the Type C monument referenced on the 2005 tie card and appears to be in the same position as the PK Nail/Rebar referenced on the Carter surveys.

It is noted that the line dividing Townships 19 and 20 North, Range 1 East falls well south of the line dividing Townships 19 North and 20 North, Range 2 East. A significant bend occurs at the subject corner and the line between the southwest quarter of Section 31, T20N, R2E and the northwest quarter of Section 1, T19N, R2E bears in a northeasterly direction. The original federal notes for Townships 19 North, Ranges 1 and 2 East call for a distance of 78.46 chains for the final N-S line between those townships. The relative positions of the various found corners in this area fit reasonably well with that distance. Hence, the substantial bend in S.R. 47 appears to be a result of the road following the section lines, as they were originally laid out.

The corner, as currently monumented, falls at the approximate center of the intersection of S.R. 47 and C.R 600 East to the south. An interpretation of the position of the corner as being at the point of intersection of the extended centers of S.R. 47 to the east and west (as evidence of the township lines to the east and west) would place the corner approximately 4 feet south of the monumented position, rather than in the physical center of the intersection, due to a short transitional curve connecting the straight lines to the east and west. However, the corner as currently monumented has been held for local surveys. Sufficient information to prove a different position further south was not found in the BCS Records or in the field. As this corner falls in a state road, excavation was not performed, hence the stone called in the 1857 and 1872 BCS records was not found. The found INDOT Type B monument was held as marking the corner. The precise date when this monument was set in place of the previous nail and rebar is not known.



Kenneth E. Hedge
 Kenneth E. Hedge, County Surveyor

James S. Swift
 James S. Swift, IN LS 20200054

December 14, 2022

Clinton Township	Marion Township
Section 36 T20N, R1E	Section 31 T20N, R2E
Section 1 T19N, R1E	Section 6 T19N, R2E

SECTION CORNER RECORD

NE 650-600

BOONE COUNTY SURVEYOR'S OFFICE

State Plane grid coordinates NAD83 (2011):

Corner 1: North: 1780476.53 East: 3155942.15 (U.S. survey feet)

Corner 2: North: 1780549.36 East: 3155941.53 (U.S. survey feet)

Corner 1: Harrison, 4" disk 'Section Corner', 2 inches above ground

Corner 2: Harrison, 4" disk 'Section Corner', 4 inches above ground

Indiana tie card references:

IN02_T20NR1E36_44 IN02_T20NR2E31_36

CORNER WITNESS DETAIL

SCALE 1" = 40'

The Harrison monument at Corner 2 was set in place of a stone found. The Harrison monument at Corner 1 was set on the range line as defined by Corner 2 and the northeast corner of Section 36 (see BCS Corner NE 700-600 STD) adjacent to an ancient wood corner post.

Both corners contain similar references in the BCS Surveyor's Record. An entry of October 25, 1865 states, with respect to Corner 2, "Established 107 links North of Qtr. Sect. Cor. for Sect 36. Set Stake." An entry with no specific date, but which appears to have been recorded after 1882, states, with respect to Corner 1, "Reestablished, Oak stake 107 South of "H" in sec. 31, Twp. 20 N, Range 2 East. Found from witness stump..." The referenced distance of 107 links represents half the closing distance reported in the federal notes for the northwest corner of Section 31.

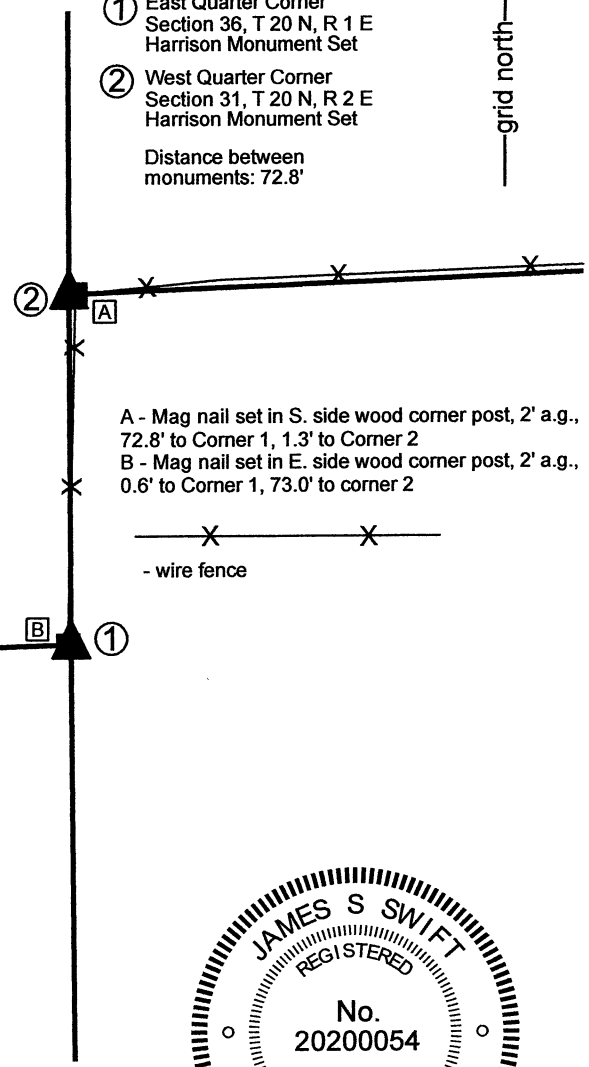
These corners have been investigated several times over several years. Wood corner posts which provide evidence of each corner were found, the southerly post has fence to the north and west attached to it, the northerly post has fence to the east and south. The posts are approximately 2.5 feet further apart than the called-for separation of 107 links. The posts also do not line up well in the east-west dimension. Reconnaissance and positioning of accessory evidence of fence and posts to the west of Corner 1 and east of Corner 2 did not solve the mystery of why the posts are further apart than 107 link distance nor did it make evident which of the posts may represent the most reliable evidence of the corner. A stone found at the southwest corner of the post providing evidence of Corner 2 represented the only non-post monument found. The stone measured 13 inches E-W by 6 inches N-S by 6 inches tall, with a distinct high spot on the top. Stakes, not stones, are called in the previous BCS records, but this stone did appear that it may have been set to mark the corner. In any case, the stone fit well with the found evidence, being adjacent to the old post and providing a solution for the range line which is a best-fit solution with respect to the east-west positions of the two posts. The stone was held as marking Corner 2 and was replaced with a Harrison monument on December 14, 2021. The position of Corner 1 was established on the southerly prolongation of the line connecting the Harrison monument at the northeast corner of Section 36 with Corner 2, at the same distance as separates the found stone and the post providing evidence of Corner 1. This position fell at the east edge of the old wood corner post. A Harrison monument was set at this position, also on December 14, 2021. It is noted that the distance of 72.8 feet which separates the monuments is 2.2 feet longer than the reported distance of 107 links.

Corner 1 was originally established as a wood post in 1819. Corner 2 is not an original federal corner.

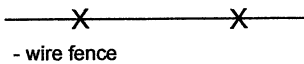
① East Quarter Corner
Section 36, T 20 N, R 1 E
Harrison Monument Set

② West Quarter Corner
Section 31, T 20 N, R 2 E
Harrison Monument Set

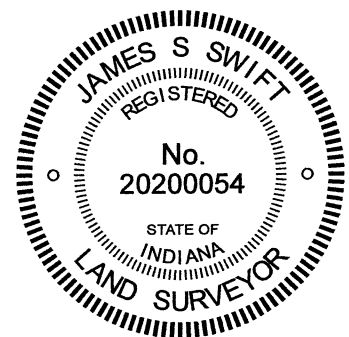
Distance between
monuments: 72.8'



A - Mag nail set in S. side wood corner post, 2' a.g.,
72.8' to Corner 1, 1.3' to Corner 2
B - Mag nail set in E. side wood corner post, 2' a.g.,
0.6' to Corner 1, 73.0' to corner 2



- wire fence



Kenneth E. Hedge, County Surveyor

James S. Swift, IN LS 20200054

December 20, 2021

Clinton Township	Marion Township
Section 36 T20N, R1E	Section 31 T20N, R2E

SECTION CORNER RECORD

BOONE COUNTY SURVEYOR'S OFFICE

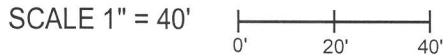
NE 700-550

State Plane grid coordinates NAD83 (CORS96):
 North: 1783031.31 East: 3153304.42 (U.S. survey feet)

Type of monument: Harrison, 4" disk 'Section Corner'
 Depth: One inch below adjacent road surface

Indiana tie card references:
 IN02_T20NR1E25_76
 IN02_T20NR1E36_04

CORNER WITNESS DETAIL



- A - Mag nail set in S. side, power pole, 2' a.g., 153.7'
- B - Boone County witness mark, flush, 27.2'
- C - Boone County witness mark, flush, 15.9'

Boone County witness mark is a 3/8" diameter x 2' long rebar bearing a metal cap stamped "Boone County Witness Point."

The Harrison monument was set in place of a vertical section of railroad rail found.

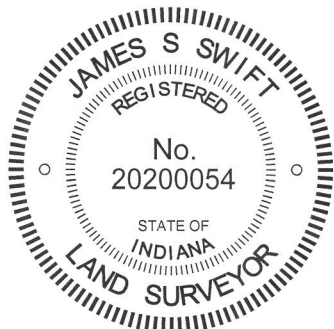
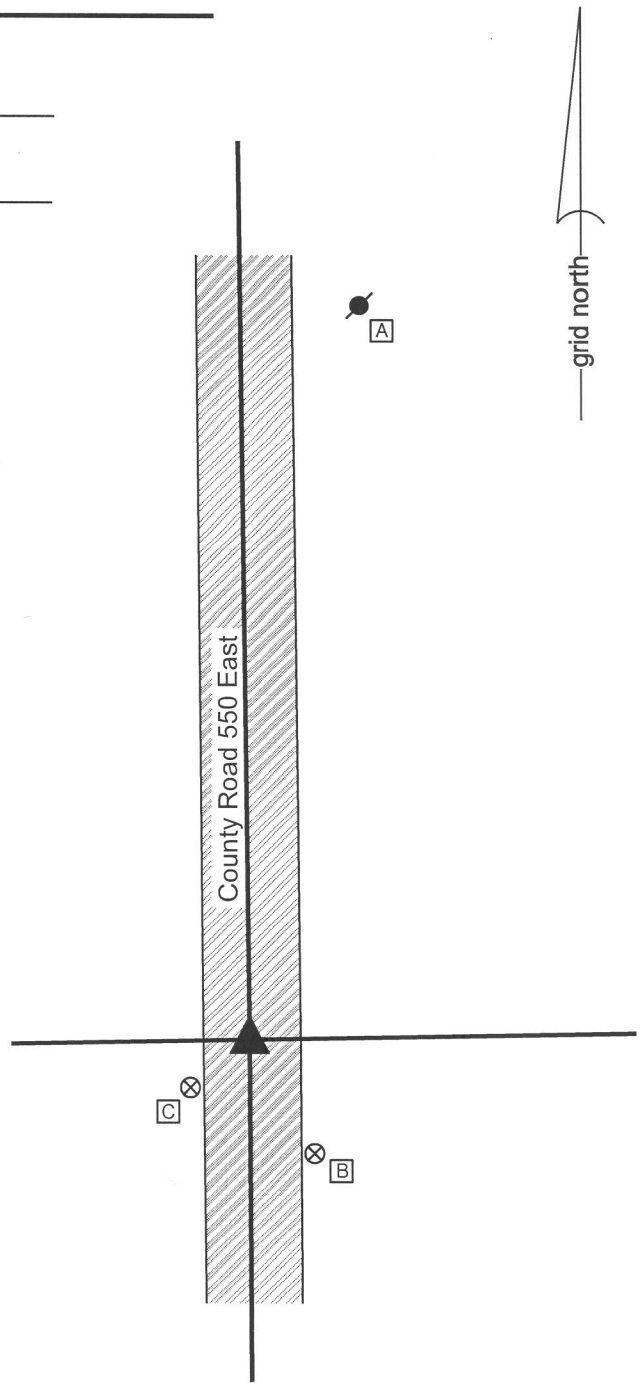
An undated record in the BCS Surveyor's Record states, with respect to this corner, "Established by intersecting lines 'C' 'b' with lines '6' and '5' in sect 25, T20N, R1E. Set rock + 8,18,20 in road." It is noted that 'C' and 'b' refer to the corners approximately 1/2 and 1/4 miles east, respectively, of the subject corner and that '6' and '5' refer to intermediate corners between the subject corner and the center quarter corner of section 25.

A BCS tie card dated August 20, 1968 states "Found Stones."

This corner was excavated on May 29, 2015. Prior to excavation, the top of a vertical section of railroad rail was visible in a shallow hole in the center of the asphalt roadway. Excavation of a small area around the railroad rail revealed no further evidence of the corner. It is believed that the stones found in 1968 were removed and replaced with the railroad rail at that time. This is known to have been a common practice of BCS field crews in the late 1960s.

The position of the top of the rail, as originally found, was held as marking the corner. The rail was removed and replaced with a Harrison monument in the same position.

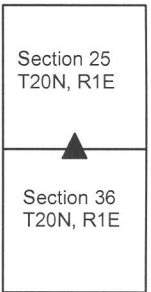
This corner was originally established as a wood post in 1822.



Kenneth E. Hedge
 Kenneth E. Hedge, County Surveyor

James S. Swift
 James S. Swift, IN LS 20200054
 March 27, 2015

Clinton Township



SECTION CORNER RECORD

NE 700-600

BOONE COUNTY SURVEYOR'S OFFICE

State Plane grid coordinates NAD83 (2011):

Corner 1: North: 1783137.43 East: 3155919.39 (U.S. survey feet)

Type of monument: Harrison, 4" disk 'Section Corner'

Depth: Three inches above surrounding ground

Indiana tie card references:

IN02_T20NR2E30_72 IN02_T20NR1E25_80

IN02_T20NR1E36_08 IN02_T20NR2E31_00

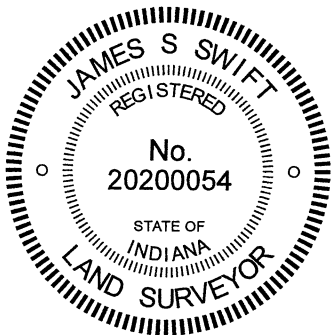
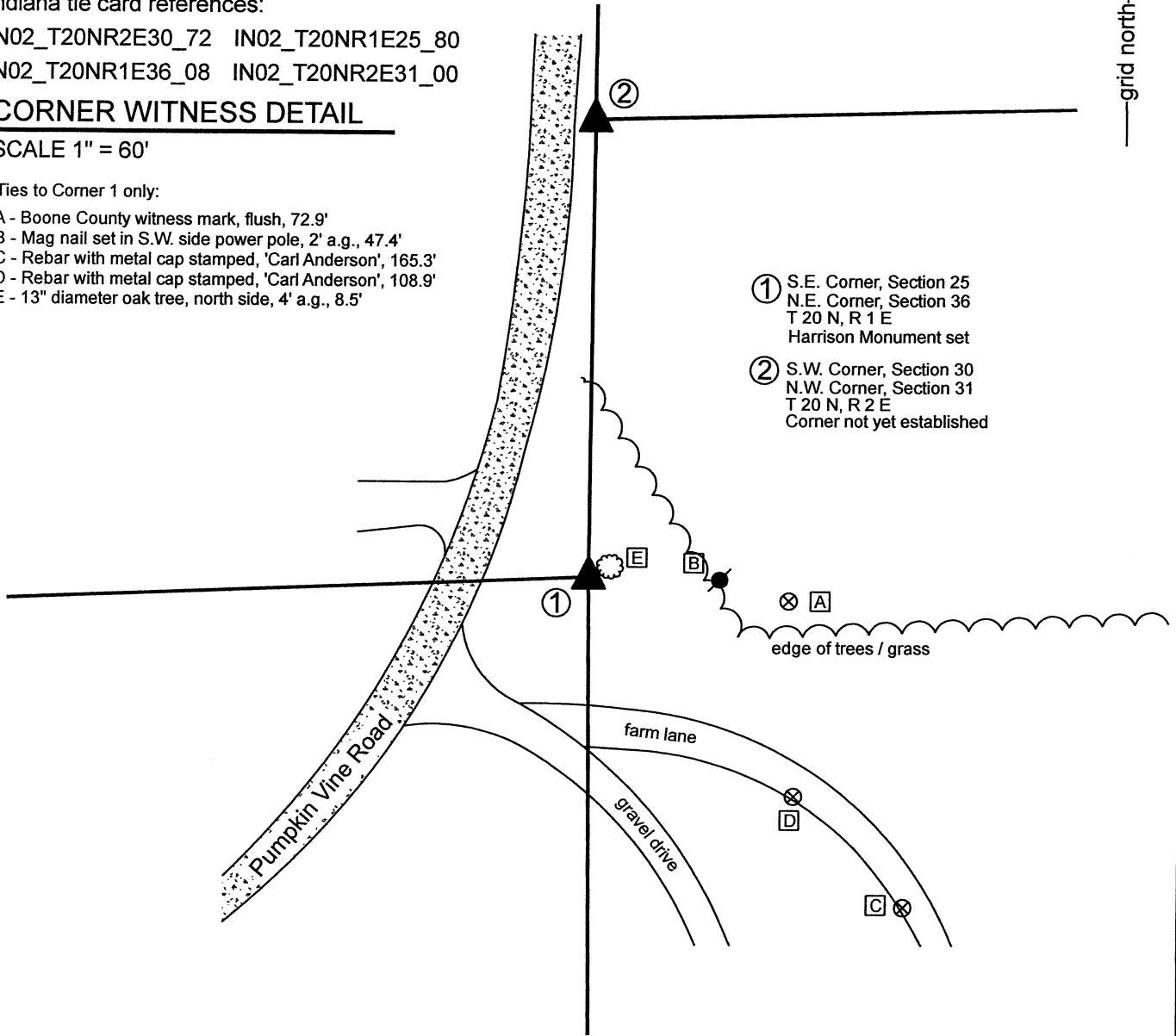
CORNER WITNESS DETAIL

SCALE 1" = 60'

Ties to Corner 1 only:

- A - Boone County witness mark, flush, 72.9'
- B - Mag nail set in S.W. side power pole, 2' a.g., 47.4'
- C - Rebar with metal cap stamped, 'Carl Anderson', 165.3'
- D - Rebar with metal cap stamped, 'Carl Anderson', 108.9'
- E - 13" diameter oak tree, north side, 4' a.g., 8.5'

- ① S.E. Corner, Section 25
N.E. Corner, Section 36
T 20 N, R 1 E
Harrison Monument set
- ② S.W. Corner, Section 30
N.W. Corner, Section 31
T 20 N, R 2 E
Corner not yet established



Kenneth E. Hedge
 Kenneth E. Hedge, County Surveyor

James S. Swift
 James S. Swift, IN LS 20200054

Clinton Township	Marion Township
Section 25 T20N, R1E	Section 30 T20N, R2E
Section 36 T20N, R1E	Section 31 T20N, R2E

SECTION CORNER RECORD

BOONE COUNTY SURVEYOR'S OFFICE

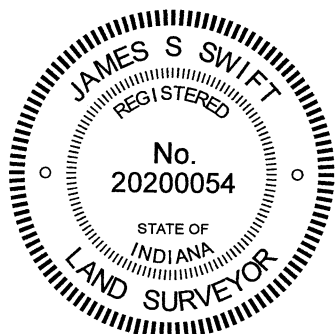
NE 700-600

WRITTEN DOCUMENTATION


The Harrison monument at Corner 1 was set in place of a rebar found. The precise position of Corner 2 has not been established as of the publication of this document. No specific descriptions of Corner 1 were found in the BCS Surveyor's Record beyond the original establishment of the corner as a wood post in 1819. Corner 2 is referenced in an entry of December 19-21, 1865 which states that the corner was "found by measuring from N.E. corner, Sect. 36." This record does not state what, if any, monument was set at that time nor does it specify by what 'measure' the corner was established.

Substantial reconnaissance was performed with respect to these corners and adjacent private properties to the southeast and southwest in November, 2020. A survey by Ronald A. Wharry, LS No. S0420 dated December 22, 1992, which is not recorded in the Office of the Boone County Recorder but was provided by an adjacent property owner shows Corner 1 as a rebar set and shows Corner 2 at or near a wood corner post. The rebar which set to mark Corner 1 as part of that survey was found in good condition, evidently undisturbed. The position of the monument was confirmed with respect to the relative positions of other monuments shown on the survey. The position of the corner works well with adjacent monuments and deed calls for properties to the southeast, southwest and northwest. A post shown as Corner 2 was also found. It is noted that the distance between the post and the rebar is 165.5 feet, substantially longer than the 213 link (140.6 feet) offset recorded by the federal surveyors in 1822. It is further noted that the position of the rebar marking Corner 1 works well with the available evidence of properties in Range 1 East and that the post appears to work with evidence in Range 2 East.

Probing and manual evidence in the immediate vicinity of the Wharry rebar revealed no stones or further evidence of Corner 1. Manual excavation in the vicinity of the wood post revealed several rocks, none of which appeared to represent corner stones. The Wharry rebar was accepted as the best available evidence of Corner 1 and was replaced with a Harrison monument on December 10, 2020. The position of Corner 2 remains uncertain, pending further investigation as well as excavation of the section corners approximately 1/2 mile north.




Kenneth E. Hedge, County Surveyor


James S. Swift, IN LS 20200054