

# SECTION CORNER RECORD

# NW 000-025

## BOONE COUNTY SURVEYOR'S OFFICE

State Plane grid coordinates NAD83 (2011):

Corner 1: North: 1745577.65 East: 3123524.14 (U.S. survey feet)

Corner 2: North: 1745577.64 East: 3123522.82 (U.S. survey feet)

Corner 1: Harrison, 4" disk 'Section Corner', flush with road surface

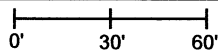
Corner 2: Harrison, 4" disk 'Section Corner', flush with road surface

Indiana tie card references:

IN02\_T19NR1W36\_78 IN02\_T18NR1W01\_06

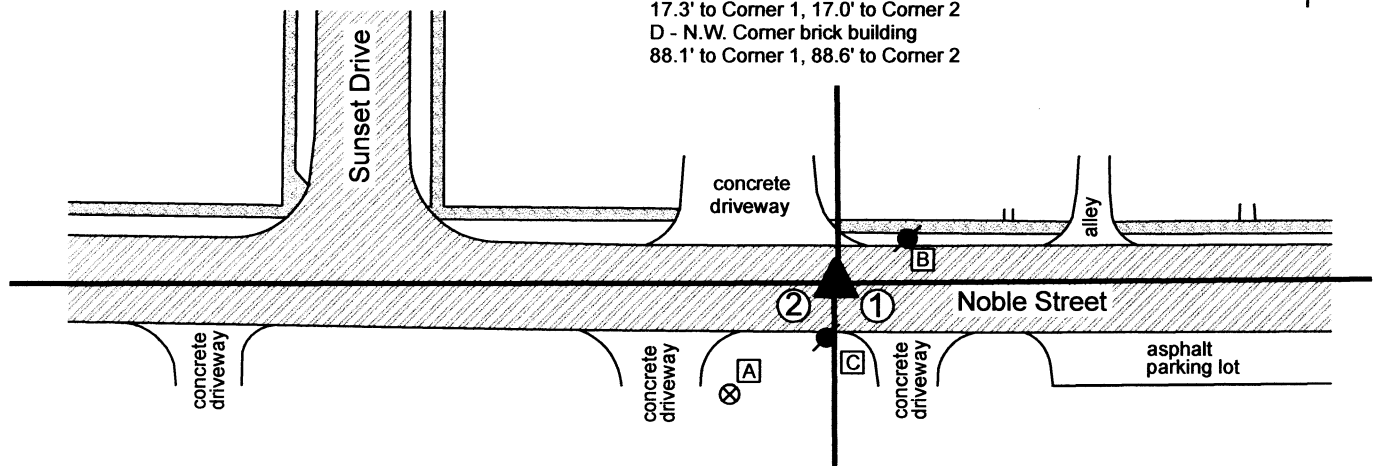
### CORNER WITNESS DETAIL

SCALE 1" = 60'

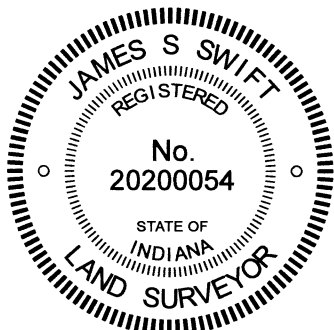


- A - Boone County witness mark, flush, 48.2' to Corner 1, 47.2' to Corner 2
- B - Mag nail set in S. side power pole, 2' a.g., 25.6' to Corner 1, 26.8' to Corner 2
- C - Mag nail set in N. side power pole, 2' a.g., 17.3' to Corner 1, 17.0' to Corner 2
- D - N.W. Corner brick building 88.1' to Corner 1, 88.6' to Corner 2

- ① S.W. Corner, S.E. 1/4, S.E. 1/4 Section 36 T 19 N, R 1 W
  - ② N.W. Corner, N.E. 1/4, N.E. 1/4 Section 1 T 18 N, R 1 W
- Distance between monuments:  
2 links = 1.32 feet



The Harrison monuments at both corners were set in place of mag nails set in the summer of 2018 by Donald R. Mosson, LS # 9600013, as referenced on a survey recorded as Instrument 2018009825, Survey Book 18, pages 67-68 in the Office of the Boone County Recorder. During his preliminary field work, Mr. Mosson discovered that holding an existing mag nail, flush with the surface of Noble Street, as the northwest corner of the northeast quarter of the northeast quarter of Section 1, T18N, R1W created significant uncertainties with respect to the lines of the parcel he was retracing in said quarter-quarter section. Mr. Mosson contacted the Boone County Surveyor's Office. He was provided the information we have (see below) in the BCS Surveyor's Record. He also obtained the plats of the Kenworthy and Sunset Park additions in section 36, T19N, R1W and proceeded with a significant effort to retrace the original positions of the two corners with respect to the information he had in both sections. Mr. Mosson was in regular dialogue with the Surveyor's Office throughout this process and it was noted that his research, field work and analysis were exhaustive and thorough. A planned effort to excavate for cornerstones was abandoned after it was observed that a sanitary sewer line in the immediate vicinity of the corners almost certainly removed any ancient evidence of the corners. Mr. Mosson established the corners at 2 links apart (1/4 of the original closing distance at the northwest corner of section 1) with respect to evidence in both sections, including monumentation, fences and curbs in section 36. His conclusions are accepted as having retraced the positions of the corners with respect to the best available evidence. Though his survey only calls out the northwest corner of the northeast quarter of the northeast quarter of section 1 (the corner upon which his survey was dependent), he also set a mag nail to mark the southwest corner of the southeast quarter of the southeast quarter of section 36. Both mag nails were removed and replaced with Harrison monuments in the same positions on July 22, 2020. Neither corner is an original corner of the Public Land Survey System. Corner 2 is referenced in BCS records on May 21, 1866, June 5, 1902 and February 19, 1903. Corner 1 is not specifically referenced in the BCS Surveyor's Record but is shown on the aforementioned plats.

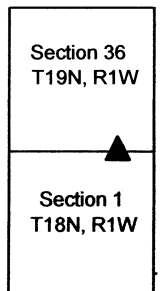


*Carol Cunningham*  
 Carol Cunningham, County Surveyor

*James S. Swift*  
 James S. Swift, IN LS 20200054

August 26, 2020, Revised May 31, 2023

Center Township



# SECTION CORNER RECORD

NW 000-025

## BOONE COUNTY SURVEYOR'S OFFICE

State Plane grid coordinates NAD83 (2011):

Corner 1: North: 1745577.64 East: 3123522.82 (U.S. survey feet)

Corner 2: North: 1745577.65 East: 3123524.14 (U.S. survey feet)

Corner 1: Harrison, 4" disk 'Section Corner', flush with road surface

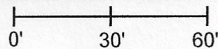
Corner 2: Harrison, 4" disk 'Section Corner', flush with road surface

Indiana tie card references:

IN02\_T19NR1W36\_78 IN02\_T18NR1W01\_06

### CORNER WITNESS DETAIL

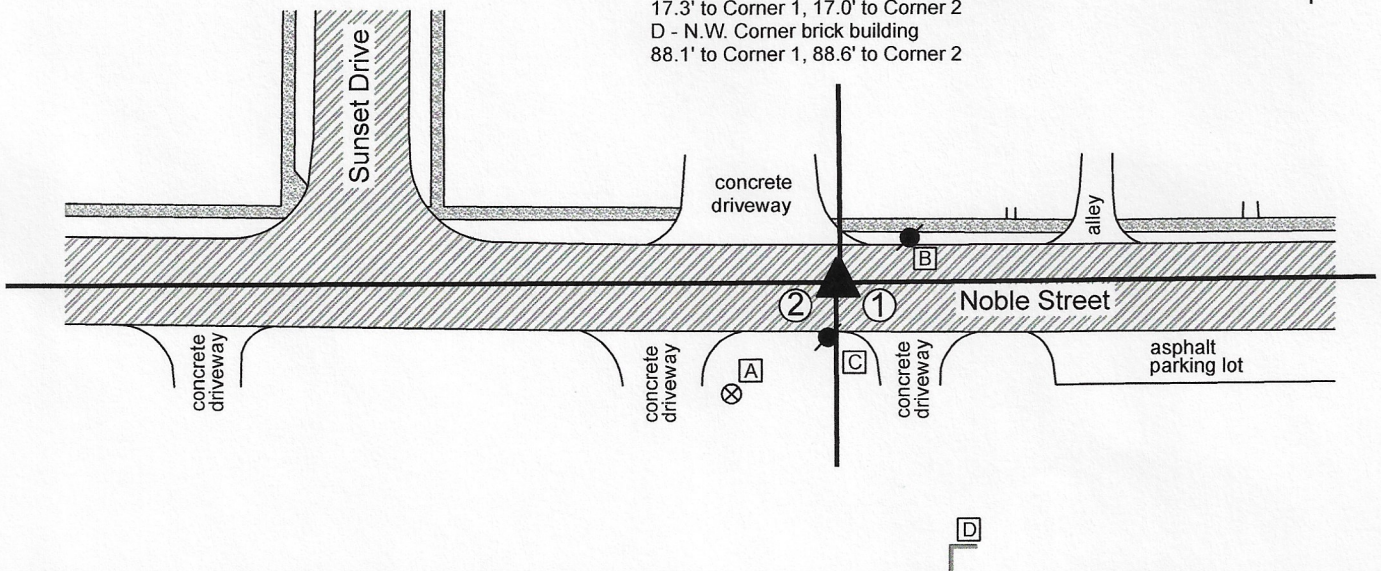
SCALE 1" = 60'



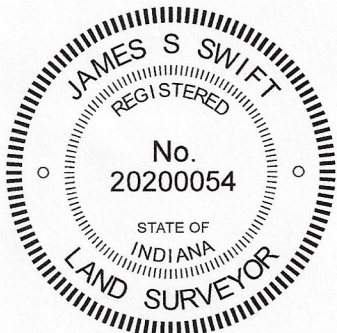
- ① S.W. Corner, S.E. 1/4, S.E. 1/4 Section 36 T 19 N, R 1 W
  - ② N.W. Corner, N.E. 1/4, N.E. 1/4 Section 1 T 18 N, R 1 W
- Distance between monuments:  
2 links = 1.32 feet



- A - Boone County witness mark, flush, 48.2' to Corner 1, 47.2' to Corner 2
- B - Mag nail set in S. side power pole, 2' a.g., 25.6' to Corner 1, 26.8' to Corner 2
- C - Mag nail set in N. side power pole, 2' a.g., 17.3' to Corner 1, 17.0' to Corner 2
- D - N.W. Corner brick building 88.1' to Corner 1, 88.6' to Corner 2

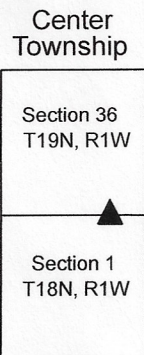


The Harrison monuments at both corners were set in place of mag nails set in the summer of 2018 by Donald R. Mosson, LS # 9600013, as referenced on a survey recorded as Instrument 2018009825, Survey Book 18, pages 67-68 in the Office of the Boone County Recorder. During his preliminary field work, Mr. Mosson discovered that holding an existing mag nail, flush with the surface of Noble Street, as the northwest corner of the northeast quarter of the northeast quarter of Section 1, T18N, R1W created significant uncertainties with respect to the lines of the parcel he was retracing in said quarter-quarter section. Mr. Mosson contacted the Boone County Surveyor's Office. He was provided the information we have (see below) in the BCS Surveyor's Record. He also obtained the plats of the Kenworthy and Sunset Park additions in section 36, T19N, R1W and proceeded with a significant effort to retrace the original positions of the two corners with respect to the information he had in both sections. Mr. Mosson was in regular dialogue with the Surveyor's Office throughout this process and it was noted that his research, field work and analysis were exhaustive and thorough. A planned effort to excavate for cornerstones was abandoned after it was observed that a sanitary sewer line in the immediate vicinity of the corners almost certainly removed any ancient evidence of the corners. Mr. Mosson established the corners at 2 links apart (1/4 of the original closing distance at the northwest corner of section 1) with respect to evidence in both sections, including monumentation, fences and curbs in section 36. His conclusions are accepted as having retraced the positions of the corners with respect to the best available evidence. Though his survey only calls out the northwest corner of the northeast quarter of the northeast quarter of section 1 (the corner upon which his survey was dependent), he also set a mag nail to mark the southwest corner of the southeast quarter of the southeast quarter of section 36. Both mag nails were removed and replaced with Harrison monuments in the same positions on July 22, 2020. Neither corner is an original corner of the Public Land Survey System. Corner 2 is referenced in BCS records on May 21, 1866, June 5, 1902 and February 19, 1903. Corner 1 is not specifically referenced in the BCS Surveyor's Record but is shown on the aforementioned plats.



*Kenneth E. Hedge*  
 Kenneth E. Hedge, County Surveyor

*James S. Swift*  
 James S. Swift, IN LS 20200054  
 August 26, 2020



# SECTION CORNER RECORD

NW 050-100

## BOONE COUNTY SURVEYOR'S OFFICE

State Plane grid coordinates NAD83 (2011):

North: 1748224.54 East: 3119532.94 (U.S. survey feet)

Type of monument: Mag nail in asphalt (N. edge concrete island)

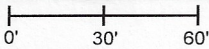
Depth: Flush with surrounding pavement

Indiana tie card references:

IN02\_T19NR1W35\_44 IN02\_T19NR1W36\_36

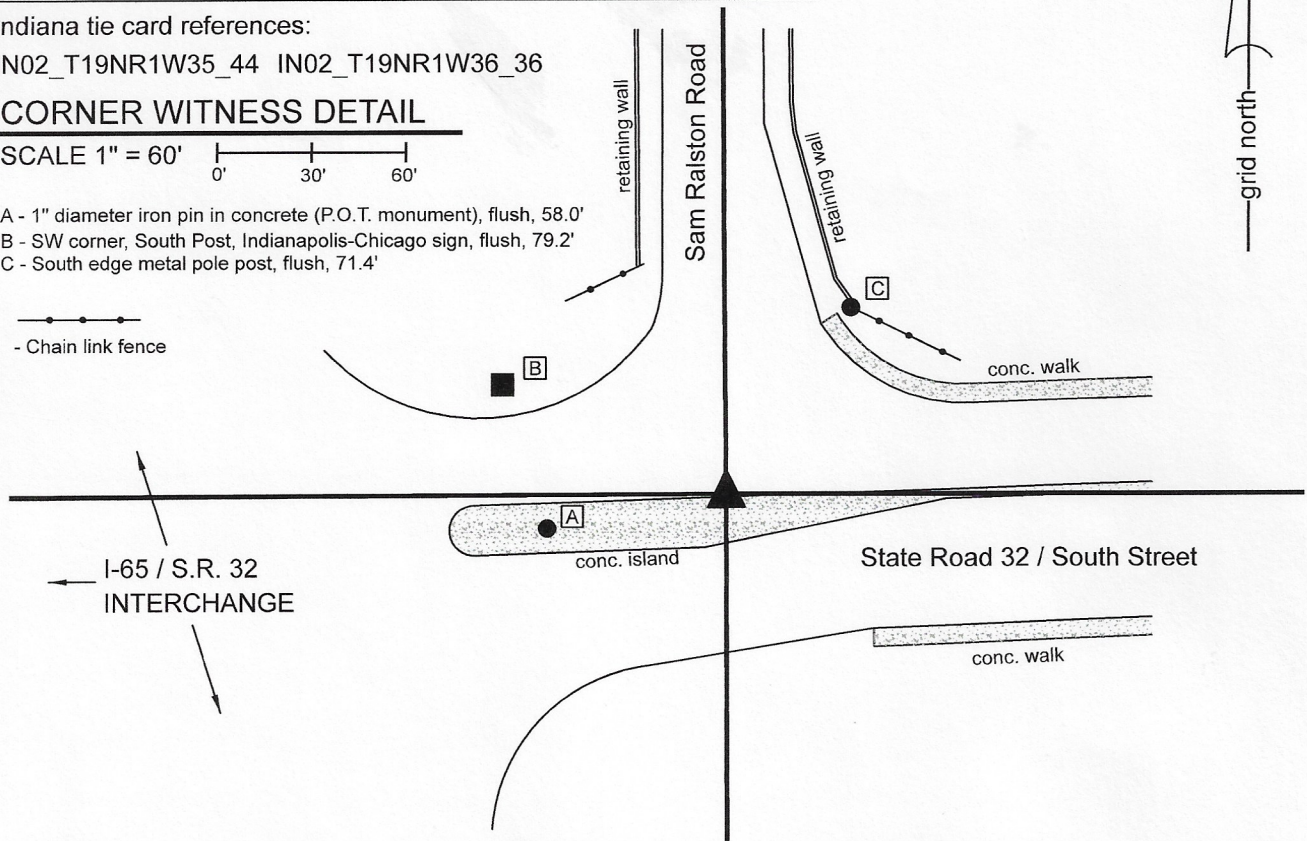
### CORNER WITNESS DETAIL

SCALE 1" = 60'



- A - 1" diameter iron pin in concrete (P.O.T. monument), flush, 58.0'
- B - SW corner, South Post, Indianapolis-Chicago sign, flush, 79.2'
- C - South edge metal pole post, flush, 71.4'

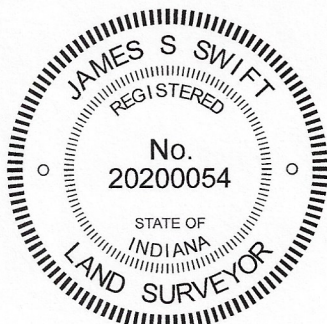
- Chain link fence

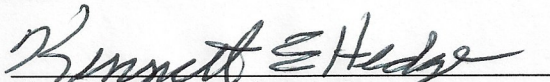


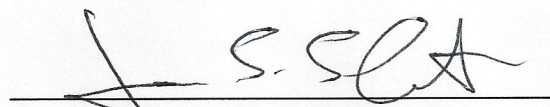
The Mag nail was found in place and held as marking the corner. The nail is slated to be replaced with an INDOT section corner monument in upcoming road work, per agreement with the INDOT Crawfordsville District Surveyor.

A BCS record of October 24, 1868 shows the corner as 'Rock.' A BCS te card dated January 19, 1994 shows the corner as a P.K. Nail at the intersection of the centers of State Road 32 and Sam Ralston Road.

Significant road work has taken place at this corner since 1994. The PK Nail found at that time has been destroyed and no Type B or Section Corner type monument is known to have been set to mark the corner. A survey by the Schneider Corporation dated December 6, 1999, recorded as Instrument 00008940 in the Office of the Boone County Recorder shows the corner as a P.K. Nail. A subsequent survey by the same company, dated June 18, 2007, recorded as Instrument 200800001363 shows the corner as a Mag nail. In the intervening time, Road Plans prepared by INDOT, project R-26614, dated October 10, 2003, show the corner as being required to have a section corner monument set. The found Mag nail is believed to be in the same position as is shown on the plans. The found Mag nail is located in-line with Sam Ralston Road to the north, being on the extension of a line connecting the section corner 1/2 mile north (see BCS corner NW 100-100) with an INDOT Type B monument found 288.5 feet north of the nail. The nail is reasonably in-line with the center of State Road 32 as it exists from west of the I-65 interchange to the section corner 1 mile west (see BCS Corner NW-050-200). It is believed that various positions have been attributed to this corner by surveys, due to the lack of substantial monumentation, but the position of the found nail represents the most reliable interpretation of the corner. As noted above, plans currently in process for INDOT call for replacement of the nail with a more substantial monument, per INDOT specifications.



  
Kenneth E. Hedge, County Surveyor

  
James S. Swift, IN LS 20200054

May 11, 2020

Center Township

Section 35 T19N, R1W	Section 36 T19N, R1W
-------------------------	-------------------------

# SECTION CORNER RECORD

NW 100-100

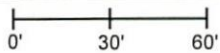
## BOONE COUNTY SURVEYOR'S OFFICE

State Plane grid coordinates NAD83 (2011):  
 North: 1750877.41 East: 3119511.14 (U.S. survey feet)

Type of monument: Harrison, 4" disk 'Section Corner'  
 Depth: Flush with adjacent road surface

Indiana tie card references:  
 IN02\_T19NR1W25\_80 IN02\_T19NR1W26\_72  
 IN02\_T19NR1W35\_08 IN02\_T19NR1W36\_00

### CORNER WITNESS DETAIL

SCALE 1" = 60' 

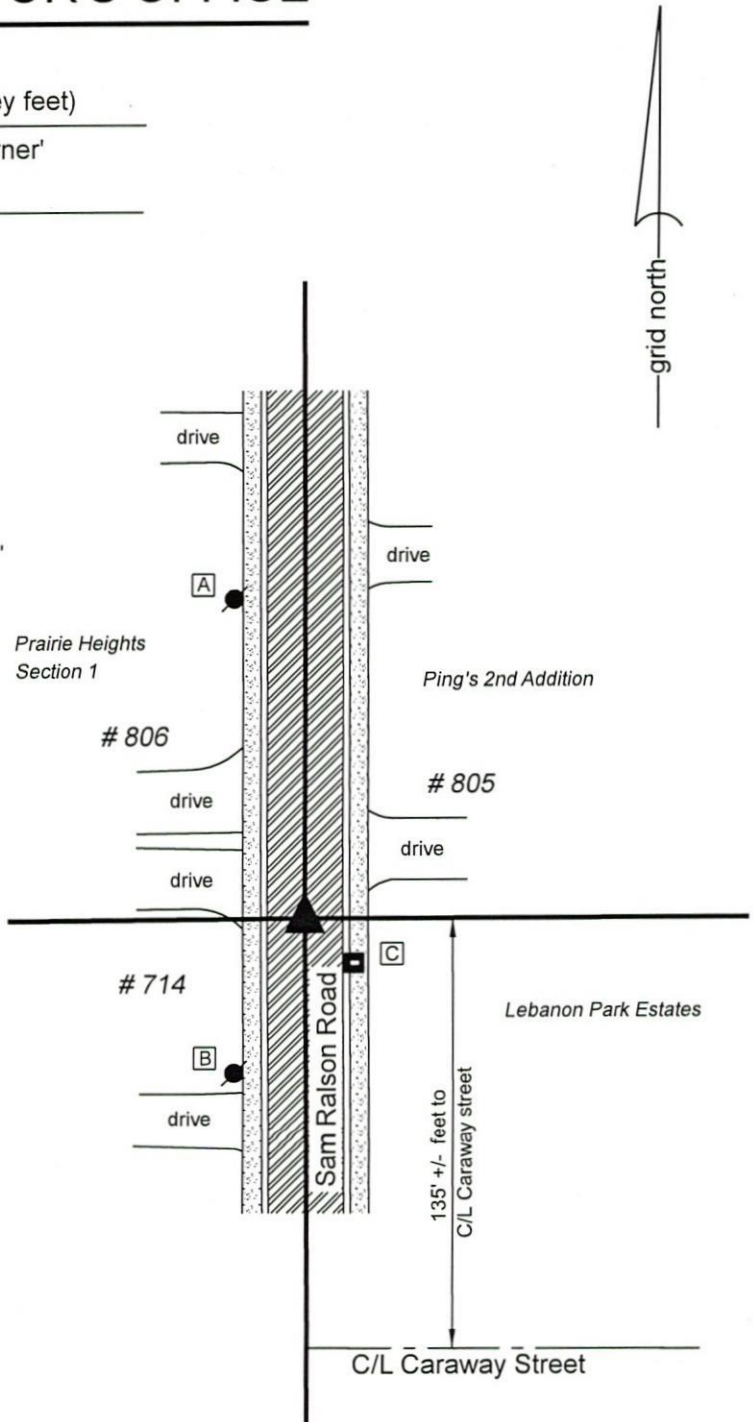
- A - Mag nail in E side PWP, 2' a.g., 101.6'
- B - Mag nail in S side PWP, 2' a.g., 53.1'
- C - Notch in NW edge of post, Mailbox 714 Sam Ralston Rd., 20.7'

The Harrison Monument was found in place. A BCS record dated June 27, 1872 states, with respect to this corner, "Set Reest'd from trees. Oak lately cut down. Is 18 links to Elm. Set rock 31x13x8 +." A BCS tie card dated January 18, 1994 shows the corner as a railroad rail with rebar.

No excavation was performed at this corner. A Harrison monument was found. It is believed that this monument is situated over or in place of the railroad rail referenced in the 1994 tie card. Both the Harrison monument and railroad rail were most likely set in cooperation with the Boone County Surveyor's Office but documentation for that was not found. The Harrison monument has been in place since at least 2006. It is believed that the position of the Harrison monument or railroad rail has been held for numerous surveys for many years and that the adjoining subdivisions and properties are tied to this corner position. (See Prairie Heights, Section 1, Ping's 2nd Addition and various plats for Lebanon Park Estates) The position of the monument works well with local evidence in the form of the center of the road and works well with the relative positions of the corners approximately 1/2 and 1 mile west, respectively (see Boone County Corners NW 100-150 and NW 100-200.)

The Harrison monument was held as marking the corner and was left in place, undisturbed.

This corner was originally established as a wood post in 1822.



*Kenneth E. Hedge*  
 Kenneth E. Hedge, County Surveyor

*James S. Swift*  
 James S. Swift, IN LS 20200054  
 February 5, 2020

