

SECTION CORNER RECORD

SE 500-500

BOONE COUNTY SURVEYOR'S OFFICE

State Plane grid coordinates NAD83 (2011):

North: 1719749.72 East: 3151359.30 (U.S. survey feet)

Type of monument: Harrison, 4" disk 'Section Corner'

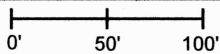
Depth: One inch below surrounding ground

Indiana tie card references:

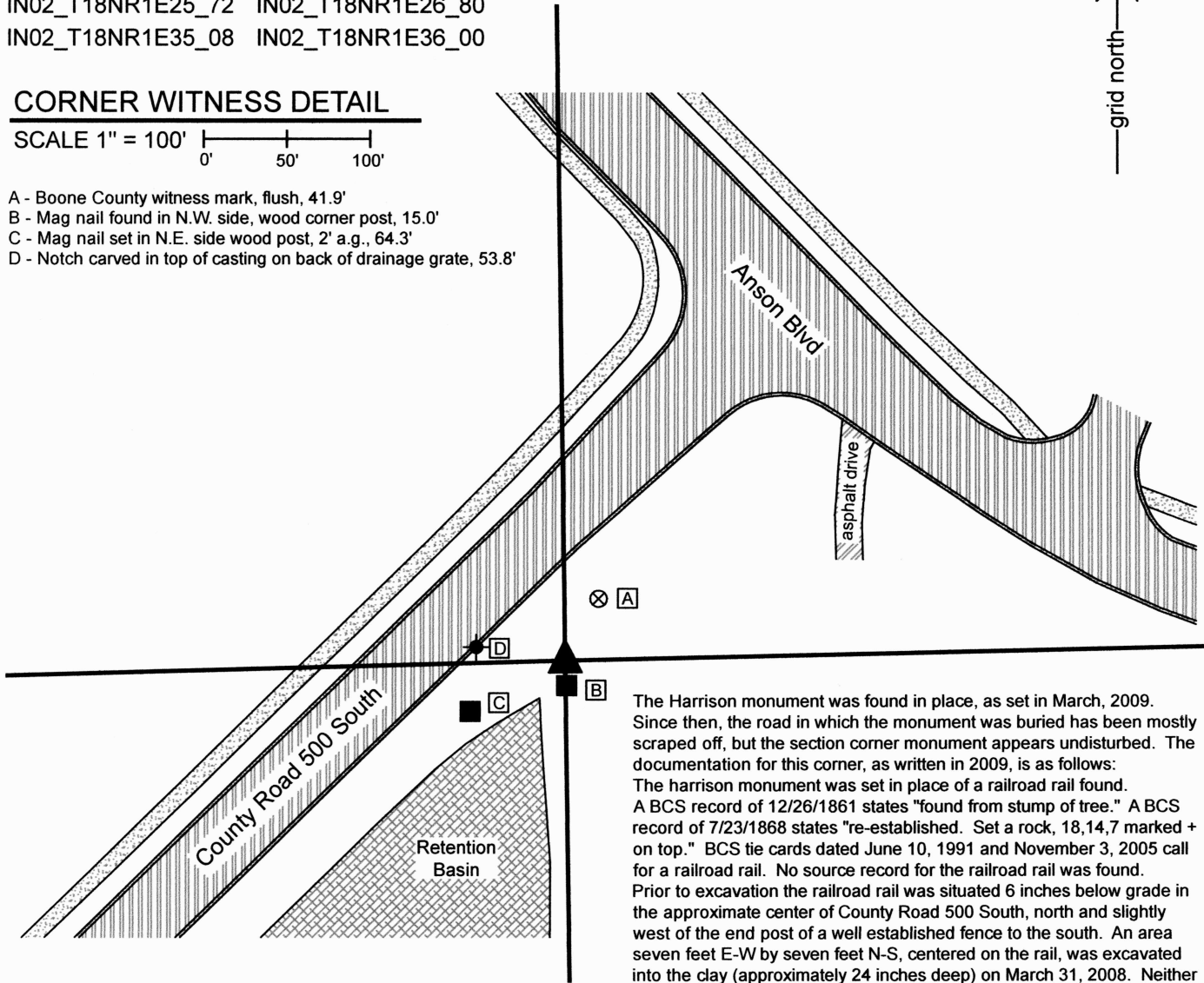
IN02_T18NR1E25_72 IN02_T18NR1E26_80

IN02_T18NR1E35_08 IN02_T18NR1E36_00

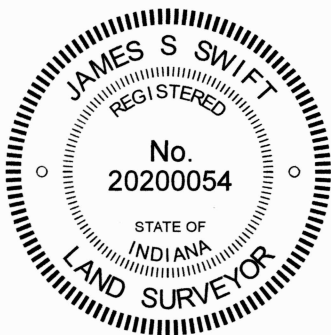
CORNER WITNESS DETAIL

SCALE 1" = 100' 

- A - Boone County witness mark, flush, 41.9'
- B - Mag nail found in N.W. side, wood corner post, 15.0'
- C - Mag nail set in N.E. side wood post, 2' a.g., 64.3'
- D - Notch carved in top of casting on back of drainage grate, 53.8'



The Harrison monument was found in place, as set in March, 2009. Since then, the road in which the monument was buried has been mostly scraped off, but the section corner monument appears undisturbed. The documentation for this corner, as written in 2009, is as follows: The harrison monument was set in place of a railroad rail found. A BCS record of 12/26/1861 states "found from stump of tree." A BCS record of 7/23/1868 states "re-established. Set a rock, 18,14,7 marked + on top." BCS tie cards dated June 10, 1991 and November 3, 2005 call for a railroad rail. No source record for the railroad rail was found. Prior to excavation the railroad rail was situated 6 inches below grade in the approximate center of County Road 500 South, north and slightly west of the end post of a well established fence to the south. An area seven feet E-W by seven feet N-S, centered on the rail, was excavated into the clay (approximately 24 inches deep) on March 31, 2008. Neither the record stone nor any other monument was found. The rail was replaced with a harrison monument set in concrete. This corner was originally established as a wood post in June 1820.



Carol Cunningham
 Carol Cunningham, County Surveyor

James S. Swift
 James S. Swift, IN LS 20200054
 September 25, 2024

Worth Township

Perry Township

Section 26 T18N, R1E	Section 25 T18N, R1E
Section 35 T18N, R1E	Section 36 T18N, R1E

SECTION CORNER RECORD

SE 500-550

BOONE COUNTY SURVEYOR'S OFFICE

State Plane grid coordinates NAD83 (2011):

North: 1719807.10 East: 3154043.45 (U.S. survey feet)

Type of monument: Harrison, 4" disk 'Section Corner'

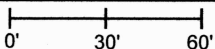
Depth: Flush with adjacent road surface

Indiana tie card references:

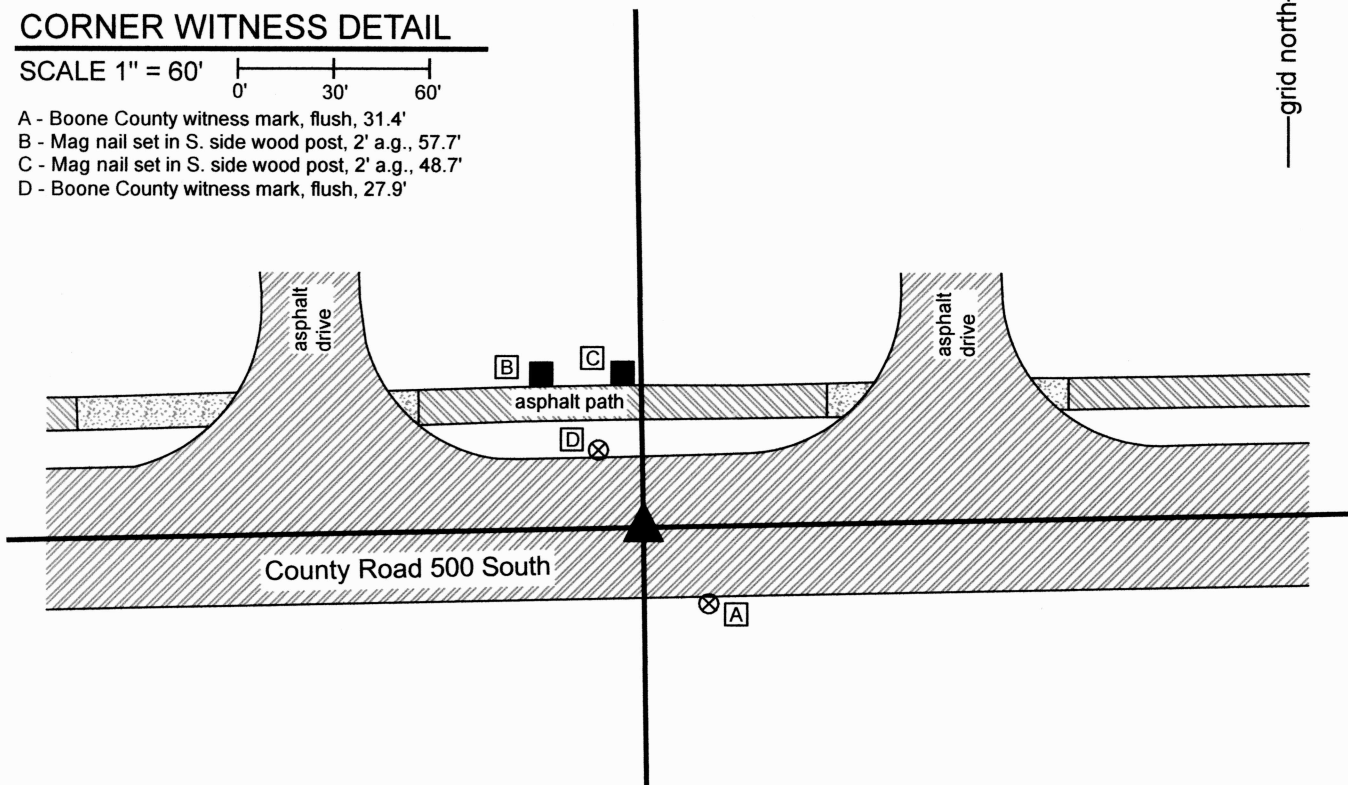
IN02_T18NR1E25_76 IN02_T18NR1E36_04

CORNER WITNESS DETAIL

SCALE 1" = 60'



- A - Boone County witness mark, flush, 31.4'
- B - Mag nail set in S. side wood post, 2' a.g., 57.7'
- C - Mag nail set in S. side wood post, 2' a.g., 48.7'
- D - Boone County witness mark, flush, 27.9'



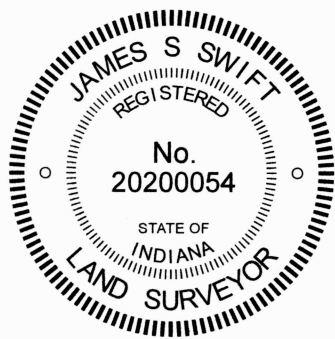
The Harrison monument was set in place of a similar monument which existed prior to reconstruction of County Road 500 South, as documented March 11, 2009. The 2009 documentation states the following:

The Harrison monument was set in place of a railroad rail found.

A BCS tie card dated December 14, 2005 calls for a railroad rail. No other BCS records for this corner were found beyond the original establishment of the corner by federal surveyors. The rail was present prior to 2005 and the source of the rail is not known.

An area six feet E-W by six feet N-S, centered on the rail, was excavated to the clay (approximately 18 inches deep) on April 1, 2008. The rail was removed and no other monuments were found. The rail was replaced with a Harrison monument set in concrete.

This corner was originally established as a wood post in June 1820.



Carol Cunningham
Carol Cunningham, County Surveyor

James S. Swift
James S. Swift, IN LS 20200054
September 30, 2024

Worth Township

Section 25
T18N, R1E

Perry Township

Section 36
T18N, R1E

SECTION CORNER RECORD

SE 500-600

BOONE COUNTY SURVEYOR'S OFFICE

State Plane grid coordinates NAD83 (2011):

Corner 1: North: 1719861.18 East: 3156725.08 (U.S. survey feet)

Corner 2: North: 1719937.06 East: 3156723.12 (U.S. survey feet)

Corner 1: Harrison, 4" disk 'Section Corner', flush

Corner 2: Harrison, 4" disk 'Section Corner', 6" above grade

Indiana tie card references:

IN02_T18NR1E25_80 IN02_T18NR2E30_72

IN02_T18NR1E36_08 IN02_T18NR2E31_00

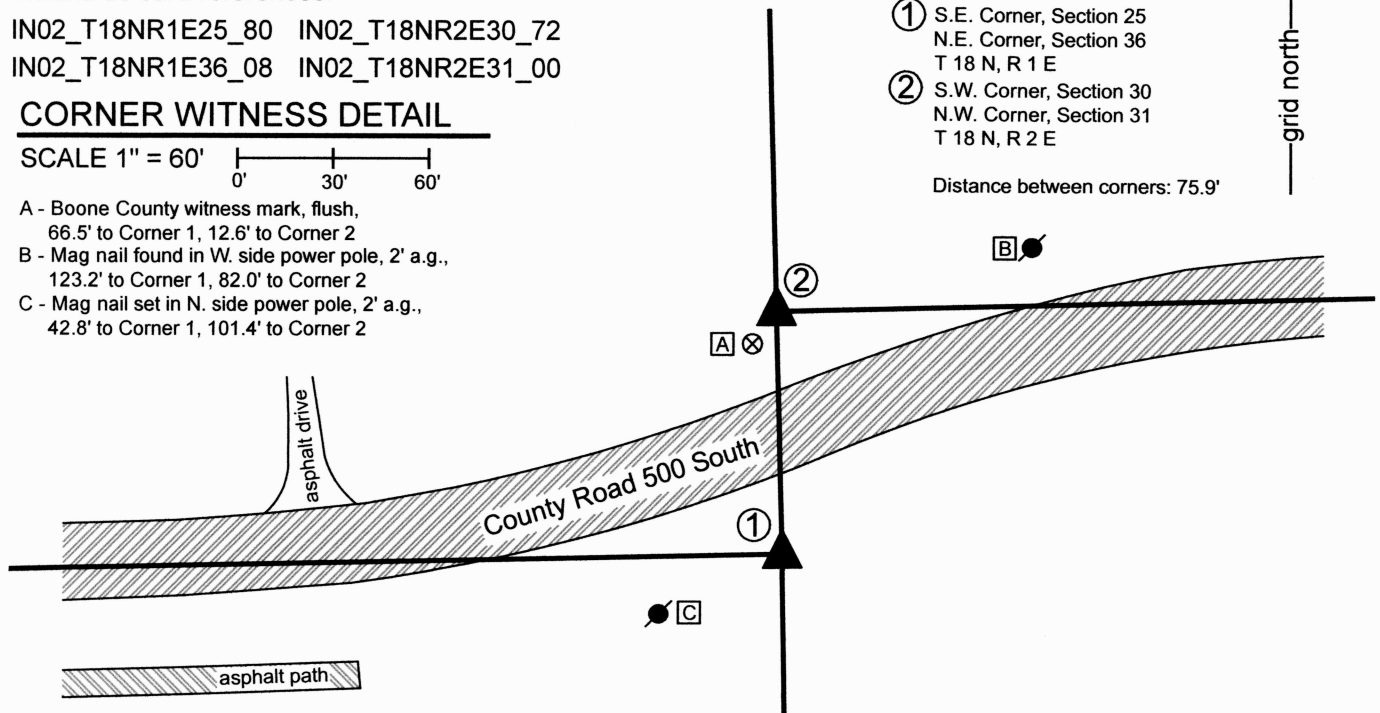
CORNER WITNESS DETAIL

SCALE 1" = 60'

- A - Boone County witness mark, flush, 66.5' to Corner 1, 12.6' to Corner 2
- B - Mag nail found in W. side power pole, 2' a.g., 123.2' to Corner 1, 82.0' to Corner 2
- C - Mag nail set in N. side power pole, 2' a.g., 42.8' to Corner 1, 101.4' to Corner 2

- ① S.E. Corner, Section 25
N.E. Corner, Section 36
T 18 N, R 1 E
- ② S.W. Corner, Section 30
N.W. Corner, Section 31
T 18 N, R 2 E

Distance between corners: 75.9'



The Harrison monument at Corner was found in place, as set in 2011. The Harrison monument at Corner 2 was set in place of a rebar which was set in 2011, but found disturbed in 2024.

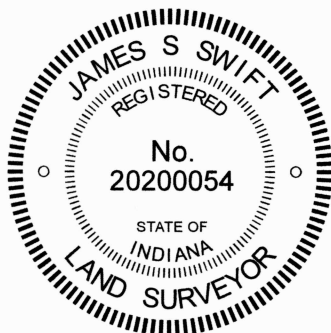
The documentation for this corner, as published in July 25, 2011, is as follows:

The Harrison monument at corner 1 was set in place of a Harrison monument found. The rebar at corner 2 was set on the range line at the record government closing distance from corner 1.

A BCS record dated August 30, 1869 states with respect to corner 1 "Found from stumps both trees. Drove no stake." A BCS record dated May 17, 1912 states with respect to corner 2 "Reestablished. Set rock. Good sized marked +." A BCS tie card dated November 28, 2005 shows the corner as a Harrison monument with no documentation of source, though the Harrison monument is in substantially the same position as a rebar shown on private surveys including a survey by American Consulting, Inc. recorded in Survey Book 8, page 15-16 in the Boone County Recorder's Office.

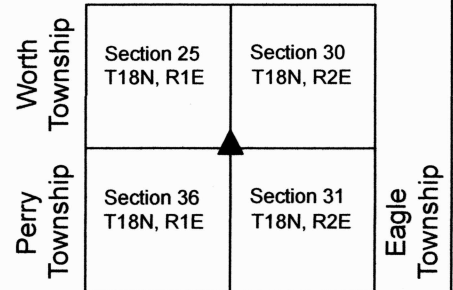
Corner 1 falls in an area which has clearly been disturbed and no evidence of the corner was found beyond the existing Harrison monument. It is noted that the position of the Harrison monument and the rebar which previously existed at the corner, fit very well with the extension of the existing roadway to the west and with the relative positions of the quarter corner 1/2 mile west and a railroad rail at the generally accepted quarter-quarter corner 1/4 mile west. The existing Harrison was held as the corner and a new Harrison monument was set in a more stable manner. Corner 2 falls near the toe of slope of an area of substantial fill for the adjacent roadway. A 3/8 inch rebar was found near the corner, but the small rebar fits with neither the original government closing distance, nor with the evidence of the section line in the form of the extended roadway to the east. Probing and limited excavation in the vicinity of the corner produced several small to medium sized rocks, none of which specifically appeared to be a section corner stone. No other evidence of this corner was found. Corner 2 was established on the range line at the record government closing distance of 115 links. This position fits well with the existing roadway to the east. A 5/8 inch diameter rebar, 3 feet long, was set at the corner, marked with an aluminum cap stamped 'Boone County Surveyor.' The 3/8 inch rebar is located 11.3 feet south of corner 2.

Corner 1 was originally established as a wood post in 1819 and corner 2 was originally established as a wood post in 1821.



Carol Cunningham
 Carol Cunningham, County Surveyor

James S. Swift
 James S. Swift, IN LS 20200054
 September 30, 2024



SECTION CORNER RECORD

SE 550-500

BOONE COUNTY SURVEYOR'S OFFICE

State Plane grid coordinates NAD83 (2011):

North: 1717097.35 East: 3151399.90 (U.S. survey feet)

Type of monument: X cut in concrete shoulder of median

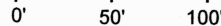
Depth: Flush with adjacent road surface

Indiana tie card references:

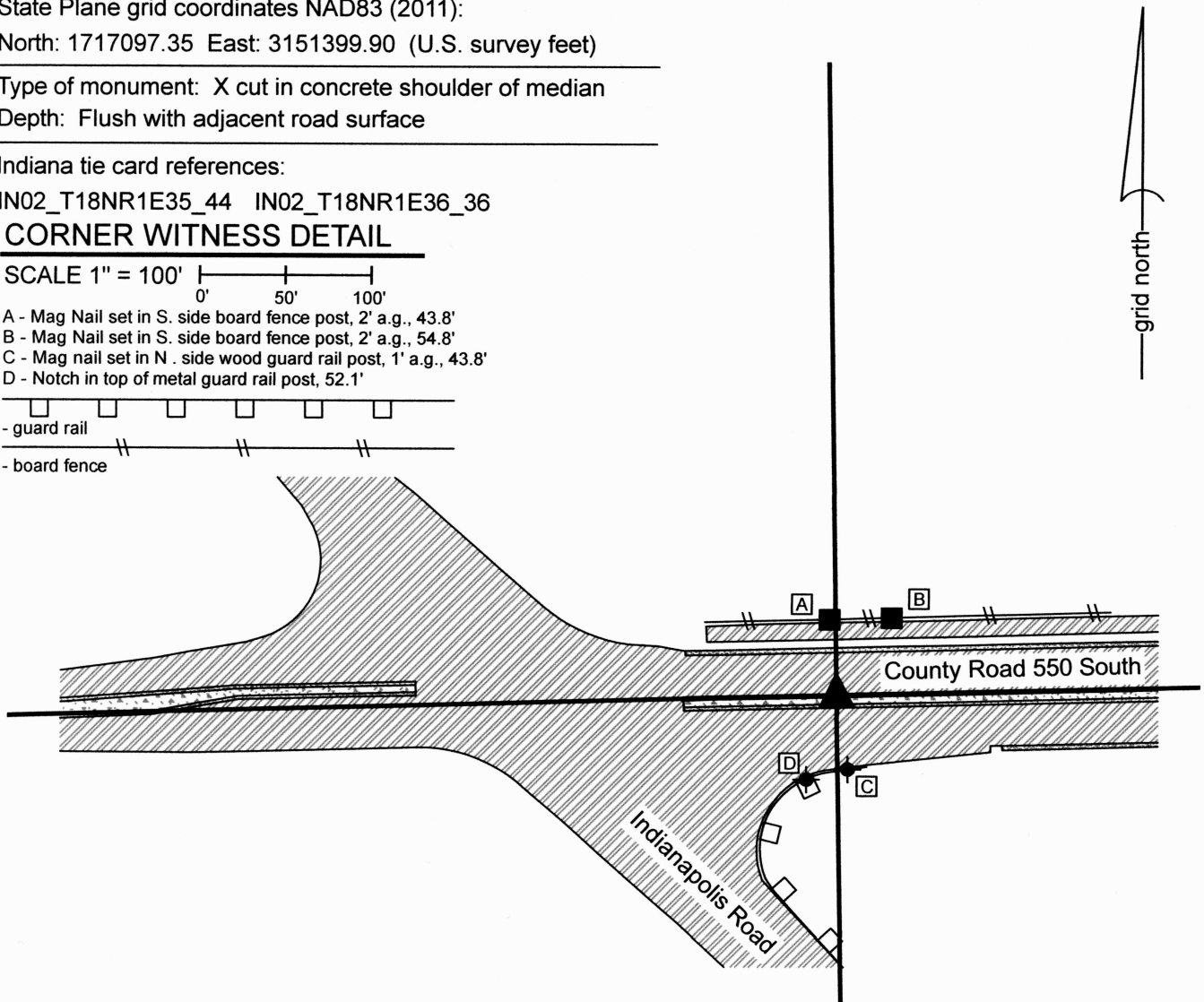
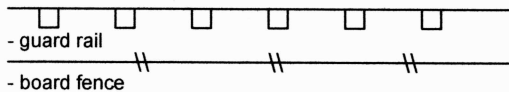
IN02_T18NR1E35_44 IN02_T18NR1E36_36

CORNER WITNESS DETAIL

SCALE 1" = 100'

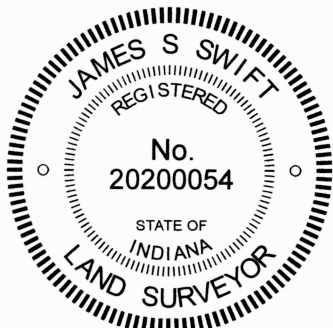


- A - Mag Nail set in S. side board fence post, 2' a.g., 43.8'
- B - Mag Nail set in S. side board fence post, 2' a.g., 54.8'
- C - Mag nail set in N. side wood guard rail post, 1' a.g., 43.8'
- D - Notch in top of metal guard rail post, 52.1'



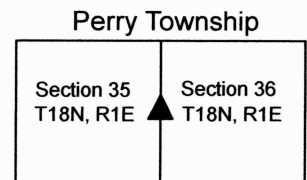
The "X" mark in concrete was etched in the same position as a Harrison monument which previously marked this corner, prior to construction of the new bridge over Interstate 65 to the east. The "X" mark is etched into the concrete shoulder on the north side of the median structure in the center of the roadway. The previous documentation for this corner, dated March 11, 2009 and revised July 14, 2010, stated the following with respect to this corner: The Harrison monument was set over the etched "+" on a stone found.

A BCS record of November 14-15, 1870 states "Reestablished from roots of Elm and stake set in former survey. Set two Rocks. One 11,8,6+. Top one 16,12,9 marked +." A BCS tie card with no date, though likely from the early 1990s, shows the corner as a 5/8 inch rebar with no documentation about source. This corner was excavated on October 1, 2008. Prior to excavation, a 5/8 inch rebar was visible flush with the stone/gravel lane. This monument fit with the ties from the undated tie card. Excavation revealed the record stone 4 inches deep, several feet west of the rebar. The stone matches the record description, measuring 12 inches E-W by 9 inches N-S by 16 inches vertical with an etched "+" on top. This stone was removed and the record lower stone was found directly below it, measuring 8 inches E-W by 11 inches N-S by 6 inches thick with a clearly visible etched "+" on top. The "+" on the lower record stone was 0.6 feet S and 3.3 feet W of the 5/8 inch rebar (removed during excavation). The Harrison monument was set over the etched "+" on the lower stone. This corner was originally established as a wood post in June, 1820.



Carol Cunningham
 Carol Cunningham, County Surveyor

James S. Swift
 James S. Swift, IN LS 20200054
 September 25, 2024



SECTION CORNER RECORD

SE 550-600

BOONE COUNTY SURVEYOR'S OFFICE

State Plane grid coordinates NAD83 (NSRS 2007):

North: 1717227.75 East: 3156765.01 North: 1717266.55 East: 3156763.94 (U.S. survey feet)

Type & depth of monument:

Standard corner (corner 1): Harrison, 4 inch disk "Section Corner", flush with adjacent ground

Closing corner (corner 2): Stone with divot in top, flush with adjacent ground.

Indiana tie card references:

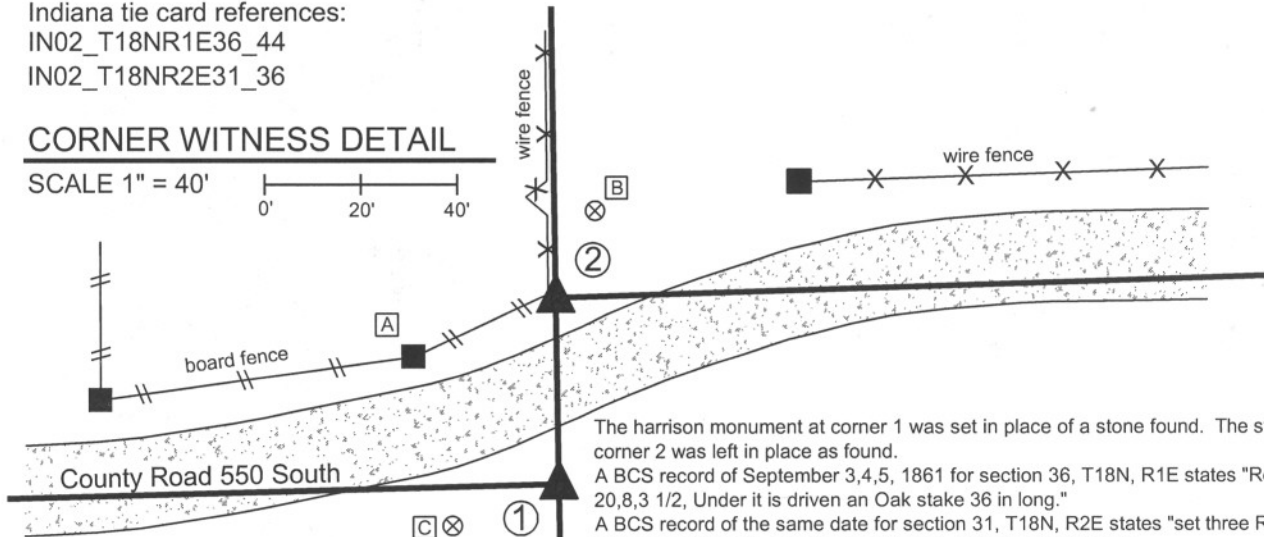
IN02_T18NR1E36_44

IN02_T18NR2E31_36

CORNER WITNESS DETAIL

SCALE 1" = 40'

0' 20' 40'



The harrison monument at corner 1 was set in place of a stone found. The stone at corner 2 was left in place as found.
A BCS record of September 3,4,5, 1861 for section 36, T18N, R1E states "Reestd. Rock 20,8,3 1/2, Under it is driven an Oak stake 36 in long."

A BCS record of the same date for section 31, T18N, R2E states "set three Rocks the under one 4.3 by 3, middle one 7.6 by 5. Top one 22.6 by 6."
No BCS tie cards were found for this set of corners.

The stone at the standard corner (W 1/4 corner, 36-18-1E) was found with a distinct top, high point at the level of the roots of the grass, slightly below flush. This stone measured 8 inches E-W by 3 1/2 inches N-S by 20 inches vertical. The stone was removed and remnants of the oak stake were found beginning at approximately 27 inches deep, which is coincident with the top of the clay layer. The old stake was in fragments, though discrenable as an object, and the wood material was clearly oak. A harrison monument was set at the position of the top, high point of the stone. A railroad rail was found flush with the adjoining ground 3.2 feet west of the stone. No BCS records were found indicating the source of the rail.

The stone at the closing corner (W 1/4 corner, 31-18-2E) was visible flush with the adjoining ground. The stone has a distinct high point with a hole chiseled in the top. The top 12 inches of the stone were exposed, at which point it remained stable in the ground. The E-W dimensions approximated the record 6 inches and the N-S dimensions were slightly less, at 12 inches down from the top. Fragments of an old post were found along the north edge of the stone. A modern wood corner post was found approximately 1 foot N and 1 foot W. A rebar bearing a metal cap stamped "Amer Cons Engr Indpls" was found 2.6 feet West of the stone.

The two records do not specifically mention the distance between the stones, but analysis of the separate records yields the calculation that they were intended to be set 57.5 links apart, or 37.95 feet. It is not clear that this distance was acutally measured, or whether they were both measured in from the township corner half-mile south. The physical distance between the two stones measured 38.80 feet. The stone at the closing corner falls 0.4 of a foot west of the line connecting the standard corner stone with a harrison monument at the northeast corner, section 36, T18N, R1E.

The preliminary surveys to the Anson Development show the rail as the standard corner and note the stone to be 2.66 feet east of the range line. See Instrument 200600009174, Survey Book 8, pages 11-12, among others.

① E. 1/4 corner, Section 36, T18N, R1E

② W. 1/4 corner, Section 31, T18N, R2E

Distance between monuments = 38.81'
Record calc. distance = 57.5 links (37.95')
see records of September 3,4,5, 1861

- A - Mag nail set in E. side wood post, 1' a.g., 40.2' to corner 1, 31.6' to corner 2
- B - Boone County witness mark, flush, 57.46' to corner 1, 20.16' to corner 2
- C - Boone County witness mark, flush, 23.79' to corner 1, 51.92' to corner 2

Boone County witness mark is a 3/8" diameter x 2' long rebarbearing a metal cap stamped "Boone County Witness Point."



Kenneth E. Hedge
Kenneth E. Hedge, County Surveyor

James S. Swift
James S. Swift, IN LS 20200054
March 11, 2009

Perry Twp Eagle Twp

Section 36 T18N, R1E	Section 31 T18N, R2E
-------------------------	-------------------------

PHOTOGRAPHIC DOCUMENTATION

Date of photography: June 21 & October 28, 2008

Top of standard corner stone as exposed at level of grass roots.



Closing corner stone from above.



Standard corner stone partially exposed, view from north.



View of standard corner stone from south looking across County Road 550 South and along the range line to the north.



Remnants of oak stake found in clay under standard corner stone (see other sheet.)



For details and documentation, refer to related sheet "Section Corner Record."

SECTION CORNER RECORD

SE 550-600

BOONE COUNTY SURVEYOR'S OFFICE

State Plane grid coordinates NAD83 (2011):

Corner 1: North: 1717227.74 East: 3156765.13 (U.S. survey feet)

Corner 2: North: 1717266.54 East: 3156764.07 (U.S. survey feet)

Corner 1: 1/4-inch hole drilled in sidewalk, flush

Corner 2: Stone with divot in top, 4" below grade

Indiana tie card references:

IN02_T18NR1E36_44 IN02_T18NR2E31_36

CORNER WITNESS DETAIL

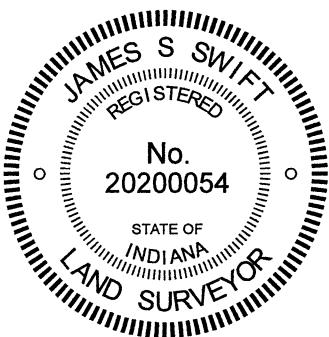
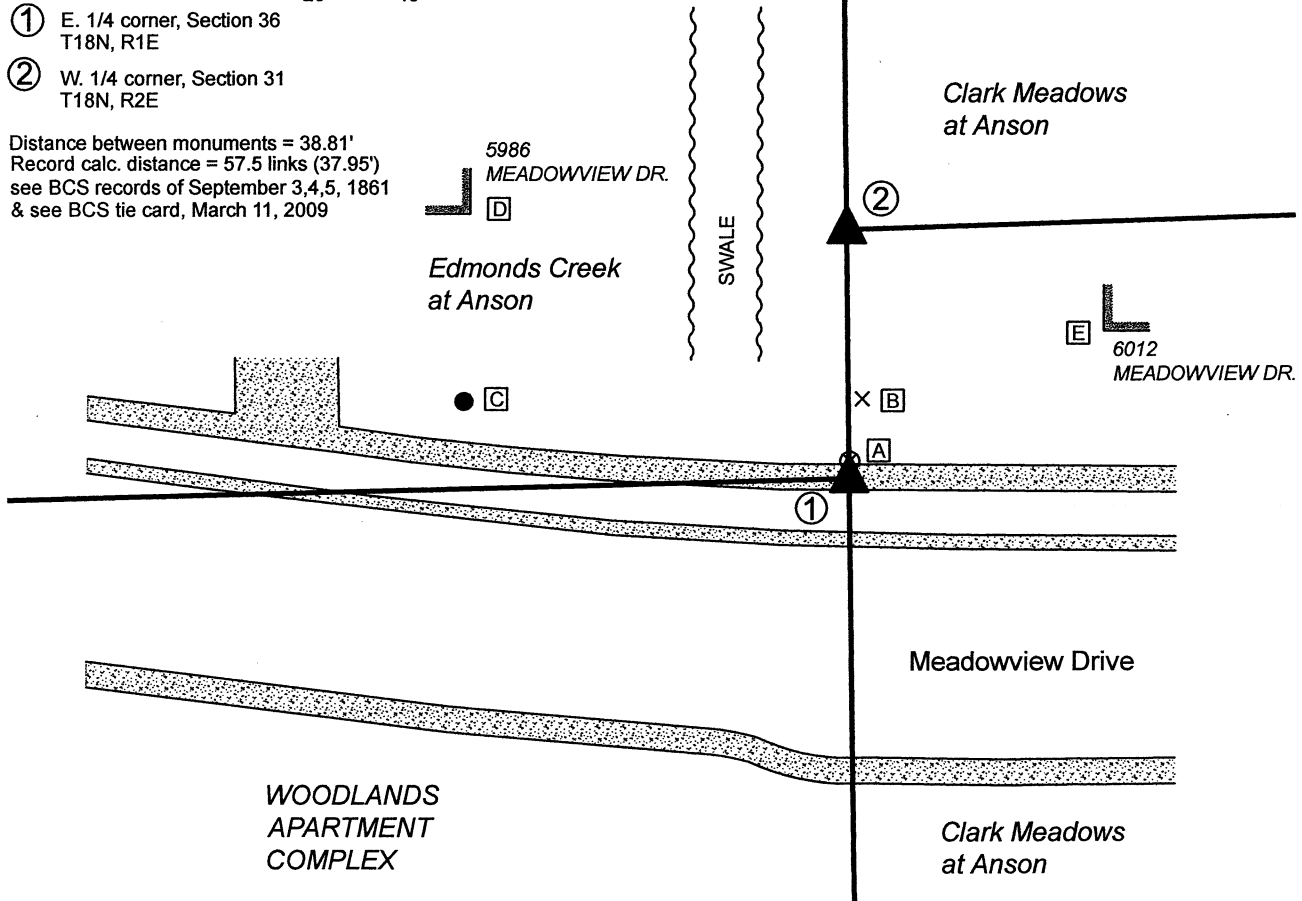
SCALE 1" = 40'

① E. 1/4 corner, Section 36
T18N, R1E

② W. 1/4 corner, Section 31
T18N, R2E

Distance between monuments = 38.81'
Record calc. distance = 57.5 links (37.95')
see BCS records of September 3,4,5, 1861
& see BCS tie card, March 11, 2009

- A - Boone County witness mark, flush, set on line between stone and drill hole, 2.8' to Corner 1, 36.0' to Corner 2
- B - Chisel mark on N. side manhole casting 12.7' to Corner 1, 26.5' to Corner 2
- C - East edge flagpole, 2' a.g., 61.7' to Corner 1, 65.1' to Corner 2
- D - S.E. cor, brick house, 2' a.g., 72.6' to Corner 1, 58.7' to Corner 2
- E - S.W. cor, house, 7' a.g. 45.8' to Corner 1, 43.6' to Corner 2



Kenneth E. Hedge, County Surveyor

James S. Swift, IN LS 20200054

Perry Twp Eagle Twp

Section 36 T18N, R1E	Section 31 T18N, R2E
-------------------------	-------------------------

SECTION CORNER RECORD

SE 550-600

BOONE COUNTY SURVEYOR'S OFFICE

WRITTEN DOCUMENTATION

The stone at Corner 2 was found undisturbed. Corner 1 was previously marked by a Harrison monument which has been removed during construction. This position was marked by a ½-inch diameter hole drilled in a concrete sidewalk. Please refer to the most recent documentation for this corner, Section Corner Record SE 550-600, dated March 11, 2009. That document explains the perpetuation of these corners as follows:

The Harrison monument at Corner 1 (replaced 2021 with a drill hole in concrete) was set in place of a stone found. The stone at Corner 2 was left in place as found.

A BCS record of September 3,4,5, 1861 for section 36, T18N, R1E states "Reestd. Rock 20,8,3 1/2, Under it is driven an Oak stake 36 in long." A BCS record of the same date for section 31, T18N, R2E states "set three Rocks the under one 4.3 by 3, middle one 7.6 by 5. Top one 22.6 by 6."

No BCS tie cards were found for this set of corners (prior to 2009).

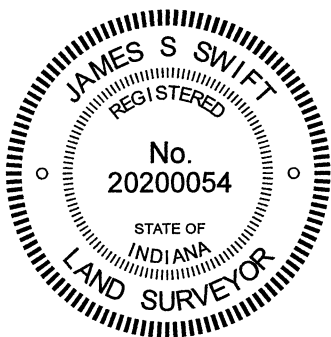
The stone at the standard corner (Corner 1, E 1/4 corner, 36-18-1E) was found with a distinct top, high point at the level of the roots of the grass, slightly below flush. This stone measured 8 inches E-W by 3 1/2 inches N-S by 20 inches vertical.

The stone was removed and remnants of the oak stake were found beginning at approximately 27 inches deep, which is coincident with the top of the clay layer. The old stake was in fragments, though discernable as an object, and the wood material was clearly oak. A Harrison monument was set at the position of the top, high point of the stone. A railroad rail was found flush with the adjoining ground 3.2 feet west of the stone. No BCS records were found indicating the source of the rail.

The stone at the closing corner (Corner 2, W 1/4 corner, 31-18-2E) was visible flush with the adjoining ground. The stone has a distinct high point with a hole chiseled in the top. The top 12 inches of the stone were exposed, at which point it remained stable in the ground. The E-W dimensions approximated the record 6 inches and the N-S dimensions were slightly less, at 12 inches down from the top. Fragments of an old post were found along the north edge of the stone. A modern wood corner post was found approximately 1 foot N and 1 foot W. A rebar bearing a metal cap stamped "Amer Cons Engr Indpls" was found 2.6 feet West of the stone.

The two records do not specifically mention the distance between the stones, but analysis of the separate records yields the calculation that they were intended to be set 57.5 links apart, or 37.95 feet. It is not clear that this distance was physically measured, or whether they were both measured independently from the township corner half-mile south. The physical distance between the two stones measured 38.81 feet. The stone at the closing corner falls 0.4 of a foot west of the line connecting the standard corner stone with a Harrison monument at the northeast corner, section 36, T18N, R1E. The preliminary surveys to the Anson Development show the rail as the standard corner and note the stone to be 2.66 feet east of the range line. See Instrument 200600009174, Survey Book 8, pages 11-12, among others. 2021 note: Surveys and plats for the adjoining subdivisions, created since 2009, hold the corners as established per the 2009 BCS Section Corner Record.

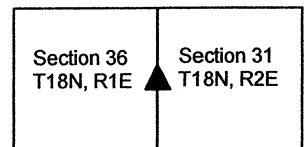
Variations between coordinates shown hereon and shown on the 2009 document represent variations in observed GPS positions with respect to the NAD83 (NSRS 2007) adjustment and the NAD83 (2011) adjustment.



Kenneth E. Hedge
Kenneth E. Hedge, County Surveyor

James S. Swift
James S. Swift, IN LS 20200054

Perry Twp Eagle Twp



SECTION CORNER RECORD

SE 600-500

BOONE COUNTY SURVEYOR'S OFFICE

State Plane grid coordinates NAD83 (2011):

Corner 1: North: 1714436.16 East: 3151447.20 (U.S. survey feet)

Corner 2: North: 1714436.93 East: 3151473.59 (U.S. survey feet)

Corner 1: Harrison, 4" disk 'Section Corner', flush with surrounding ground

Corner 2: Harrison, 4" disk 'Section Corner', flush with surrounding ground

Indiana tie card references:

IN02_T18NR1E36_72 IN02_T18NR1E35_80

IN02_T17NR1E02_08 IN02_T17NR1E01_00

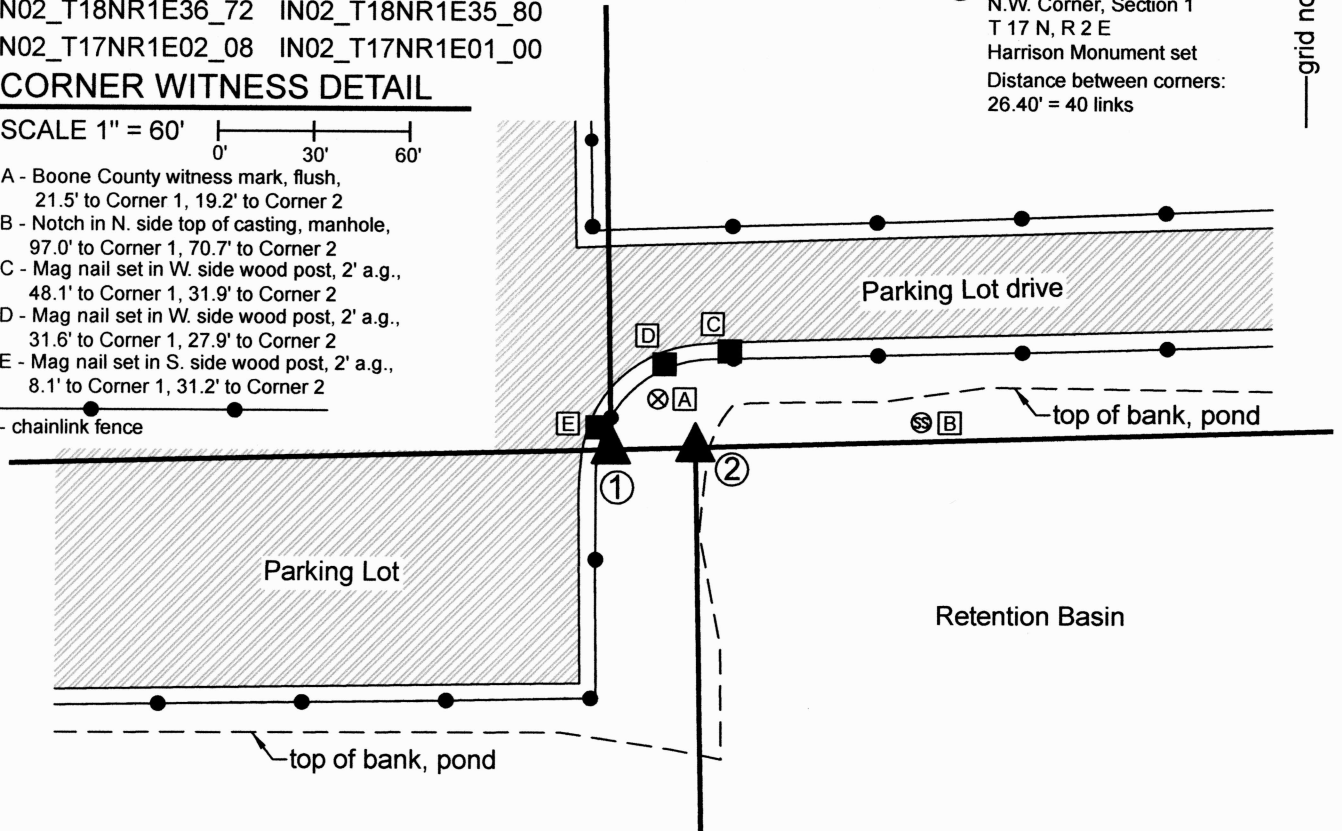
CORNER WITNESS DETAIL

SCALE 1" = 60'

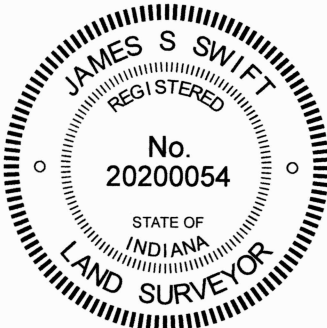
- A - Boone County witness mark, flush, 21.5' to Corner 1, 19.2' to Corner 2
- B - Notch in N. side top of casting, manhole, 97.0' to Corner 1, 70.7' to Corner 2
- C - Mag nail set in W. side wood post, 2' a.g., 48.1' to Corner 1, 31.9' to Corner 2
- D - Mag nail set in W. side wood post, 2' a.g., 31.6' to Corner 1, 27.9' to Corner 2
- E - Mag nail set in S. side wood post, 2' a.g., 8.1' to Corner 1, 31.2' to Corner 2

- chainlink fence

- ① S.E. Corner, Section 35
S.W. Corner, Section 36
T 18 N, R 1 E
Harrison Monument set
- ② N.E. Corner, Section 2
N.W. Corner, Section 1
T 17 N, R 2 E
Harrison Monument set
Distance between corners:
26.40' = 40 links



The Harrison Monument at Corner 2 was set directly over an existing Harrison Monument which is located at 20 inches deep, having been covered when the adjacent retention basin was created. The Harrison Monument at Corner 1 was set in place of a similar monument which was set in 2010, then subsequently moved by a property owner, and eventually replaced with a rebar in 2017. A BCS tie card dated July 14, 2010 and revised April 27, 2017 discusses these corners at length. In 2010, Corner 1 was set in place of a stone found per an 1870 BCS record. The position of the stone was confirmed at that time with respect to the relative positions of several other stones set in 1870, said stones being north and east of the corner, and fully documented in the 1870 BCS record. This position was 9.4 feet west of a rebar previously held as the corner. Corner 2 was set in 2010 at a position 26.4 links east of Corner 1. This position fell 9.8 feet west of a corner post which had also been held for previous surveys. Recently, significant disruption of this area has taken place, with a retention basin constructed to the east of the corners, a drive to the north, and a parking area to the north and west. In 2024, we discovered that the rebar at Corner 1 was missing but we found the Harrison marking Corner 2 at 20 inches deep, evidently undisturbed. Prior to uncovering the buried Harrison Monument, we observed a 5/8-inch diameter rebar with no cap protruding several inches above ground in the immediate vicinity of Corner 2. This rebar was 0.2 foot east of the buried Harrison. The rebar was removed as part of the process of setting the new monument above the buried monument.

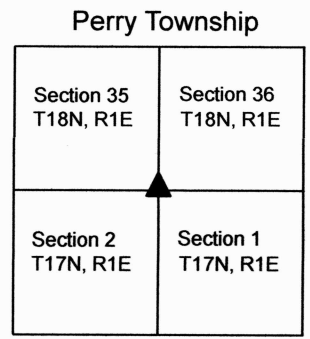


Carol Cunningham

 Carol Cunningham, County Surveyor

James S. Swift

 James S. Swift, IN LS 20200054
 November 13, 2024



SECTION CORNER RECORD

SE 600-550

BOONE COUNTY SURVEYOR'S OFFICE

State Plane grid coordinates NAD83 (NSRS 2007):

North: 1714514.09 East: 3154120.42 (U.S. survey feet) (corner 1)

Type of monument: Harrison, 4" disk 'Section Corner' (corner 1)

Depth: 2 inches above adjacent ground in concrete pillar

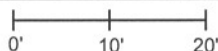
Indiana tie card references:

IN02_T18NR1E36_76

IN02_T17NR1E01_04

CORNER WITNESS DETAIL

SCALE 1" = 20'

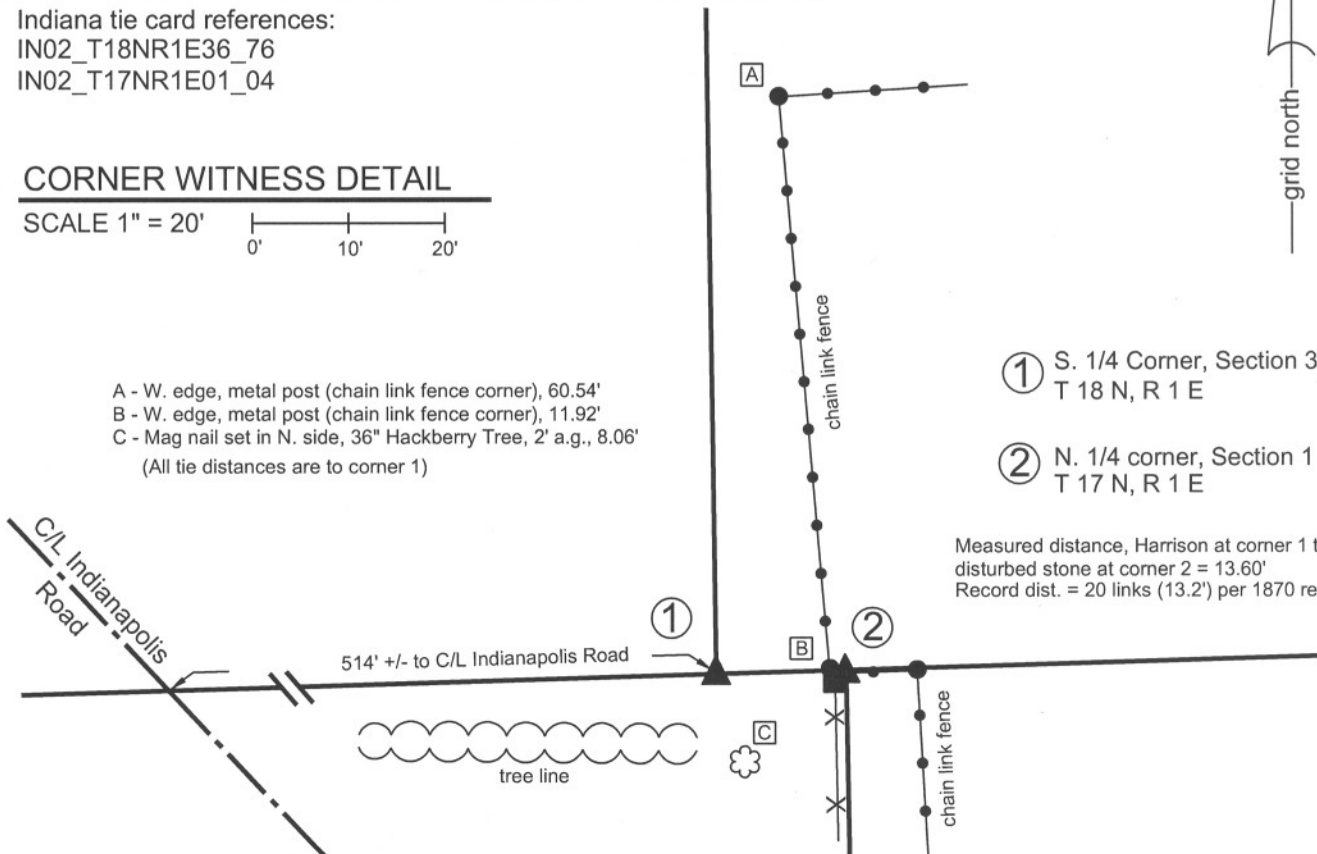


- A - W. edge, metal post (chain link fence corner), 60.54'
 - B - W. edge, metal post (chain link fence corner), 11.92'
 - C - Mag nail set in N. side, 36" Hackberry Tree, 2' a.g., 8.06'
- (All tie distances are to corner 1)



- ① S. 1/4 Corner, Section 36
T 18 N, R 1 E
- ② N. 1/4 corner, Section 1
T 17 N, R 1 E

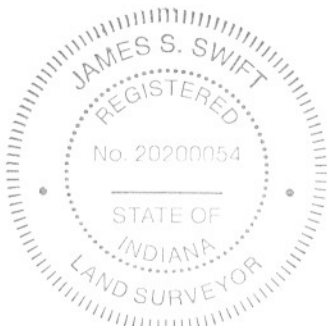
Measured distance, Harrison at corner 1 to disturbed stone at corner 2 = 13.60'
Record dist. = 20 links (13.2') per 1870 record.



The harrison monument was set in place of a stone found.

BCS records of November 14-15, 1870 state "Reestablished from stumps of both trees. Set a rough Rock. 10,8,6 +. Top one 18, 14,6 +." (S1/4 corner 36-18-1E). and "Established 20 links E. of F, Sect. 36. Set Rock. 16, 11, 5 marked +." (N 1/4 corner, 1-17-1E). A BCS tie card dated December 14, 2005 calls for a stone at the N 1/4 corner, 1-17-1E and a wooden fence post at the S. 1/4 corner, 36-18-1E. This corner was excavated on September 17, 2008. The above ground portion of the post shown on the 2005 tie card was found lying on the ground and the base was found intact in the ground. The record top stone was found 1 foot deep against the south edge of the base of the post. The "+" was clearly visible on the top of the stone. The stone was vertical, with the 14 inch dimension E-W and the 6 inch dimension N-S with the flat side of the stone facing North, against the post. The record bottom stone was not found. It is plausible that both stones were removed at the time the post was set and only the top stone was replaced. The stone did not appear to be acting as a brace rock, as no fence would have been attached to the post towards the south, the depth was not sufficient to properly brace the post and no other bracing rocks were found around the post. The stone did have several characteristics of a corner stone in the form of vertical placement, orientation in cardinal directions and etched "+" on top. The harrison monument was set in place of the etched "+" on the stone. The stone to the east has been severely disturbed due to the installation of a large metal corner post for a chain link fence. This corner is not an original federal corner and the stone was left in place, disturbed..

The south quarter corner of section 36, T 18 N, R 1 E was originally established as a wood post in 1819.

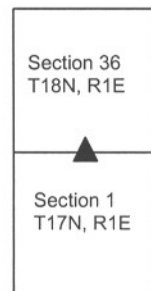


Kenneth E. Hedge
 Kenneth E. Hedge, County Surveyor

James S. Swift
 James S. Swift, IN LS 20200054

March 11, 2009

Perry Township



PHOTOGRAPHIC DOCUMENTATION

Date of photography: September 18, 2008

Corner stone, fragments of in-ground base of post and broken off bottom of above ground portion of post, lying to the east of the stone. Overhead view from south.



Corner stone, fragments of in-ground base of post and broken off bottom of above ground portion of post, lying to the east of the stone. Overhead view from north.



Close-up of the stone and fragments of in-ground portion of post at the north edge of the stone.



Same picture as to the left with the etched "+" on the top of the stone enhanced for ease of visual detection.



For details and documentation, refer to related sheet "Section Corner Record."