

SECTION CORNER RECORD

NW 000-700

BOONE COUNTY SURVEYOR'S OFFICE

State Plane grid coordinates NAD83 (2011):

Corner 1: North: 1745538.93 East: 3087834.78 (U.S. survey feet)

Corner 2: North: 1745538.99 East: 3087871.08 (U.S. survey feet)

Corner 1: Harrison, 4" disk 'Section Corner', 4" below adjacent road surface

Corner 2: 5/8" rebar with aluminum cap stamped 'Boone County Surveyor' flush with surrounding ground

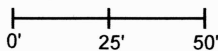
Indiana tie card references:

IN02_T19NR2W36_72 IN02_T19NR2W35_80

IN02_T18NR2W02_08 IN02_T18NR2W01_00

CORNER WITNESS DETAIL

SCALE 1" = 50'



A - Boone County witness mark, flush,

31.9' to Corner 1, 63.2' to Corner 2

B - Mag nail set in E. side power pole, 2' a.g.,

92.5' to Corner 1, 104.1' to Corner 2

C - S.E. corner mailbox '35 South', 3" a.g.,

12.7' to Corner 1, 46.1' to Corner 2

D - Mag nail set in S. side power pole, 2' a.g.,

139.4' to Corner 1, 137.3' to Corner 2

E - Mag nail set in E. side power pole, 2' a.g.,

137.7' to Corner 1, 146.4' to Corner 2

① S.E. Corner, Section 35
S.W. Corner, Section 36
T 19 N, R 2 W
Harrison Monument Set

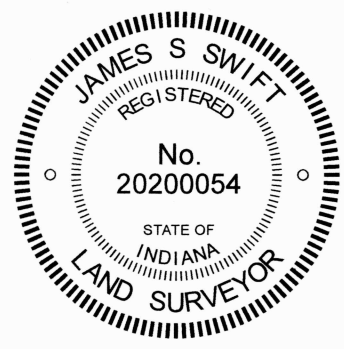
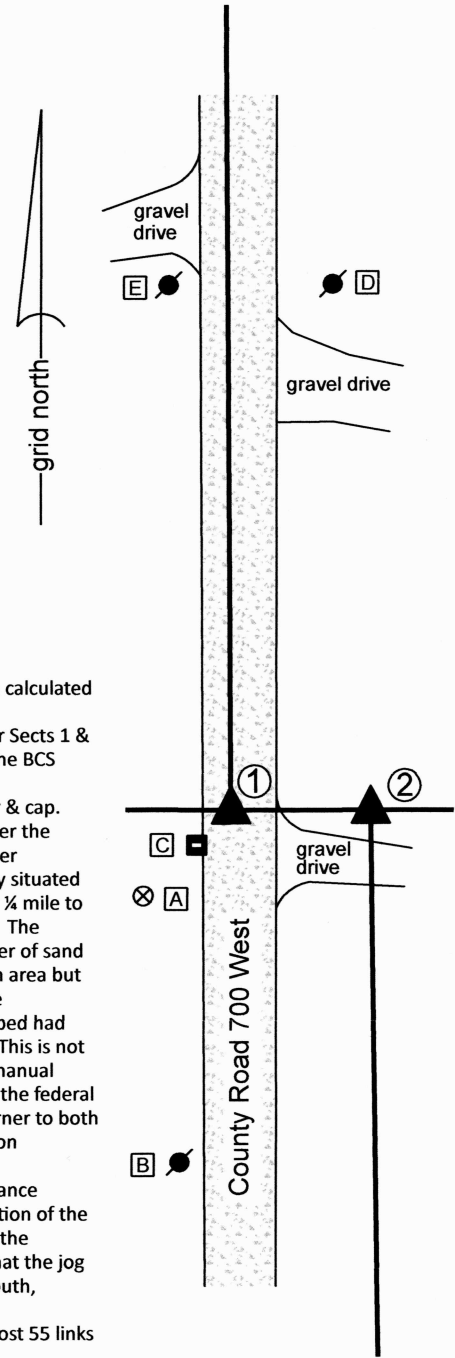
② N.W. Corner, Section 1
N.E. Corner, Section 2
T 18 N, R 2 W
5/8" rebar with aluminum cap
stamped 'Boone County Surveyor'

Distance between monuments:
55 links = 36.3 feet.

The Harrison monument at Corner 1 was set in place of a rebar found. The rebar at Corner 2 was set in at a calculated position.

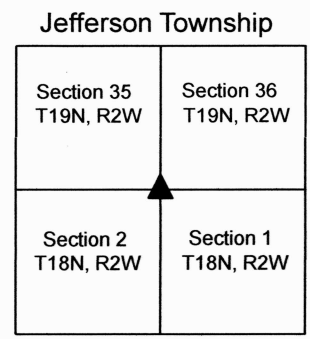
A BCS record of May 11, 1870 states, with respect to Corner 1, "Reestablished by measuring lap from corner Sects 1 & 12. Also Elm stump here. Set Rock 19,15,6 marked +." No specific descriptions of Corner 2 were found in the BCS record beyond the original establishment of the corner at 55 links east of Corner 1 in 1820.

A tie card dated November 27, 2000 which was submitted to this office by INDOT shows Corner 1 as a rebar & cap. Corner 1 was excavated on December 15, 2021. Prior to excavation, a 5/8-inch diameter rebar was found per the 2000 INDOT tie card. No monument was found marking Corner 2. Excavation at Corner 1 revealed no further evidence of the corner. It is known that the old Interurban Railroad previously existed in this area, generally situated along the line between T18N and T19N, and evidence of the old railroad bed has been found approximately 1/4 mile to the west. During excavation, substantial evidence of previous disruption of the old road bed was observed. The typical stratification of the layers of the road bed were observed to be more mixed in this excavation. A layer of sand fill was observed to exist from 1 foot deep to approximately 1.5 feet deep on the east side of the excavation area but was observed to be deeper on the west side. A layer of mud and clay was observed on the south side of the excavation area, but not the north. During the process of excavation, it appeared in the field that the road bed had been previously disrupted, presumably as part of the process of installing, then removing the railroad bed. This is not proven but may account for why the stone called in the 1870 record was not found. Previous probing and manual excavation in the vicinity of Corner 2 also revealed no evidence of the corner. The found rebar fit well with the federal closing distances for the line between Sections 1 and 2, T18N, R2W and fit with tree line evidence of the corner to both the east and west. The rebar was held as marking the corner and was replaced with a Harrison monument on December 15, 2021. Corner 2 was established on the township line as defined by Corner 1 and the south quarter-corner of Section 36 (see BCS Corners NW 000-650) at a position 55 links east of Corner 1. This distance matches the offset reported in the original federal field notes, matches the distance reported in the description of the land to the southwest (Instrument 201400011121) and works quite well with the implied distance between the corners per the description of the adjacent land to the southeast (Instrument 200700010344). It is noted that the jog in the road typically associated with a township line offset occurs at a high point approximately 1400 feet south, though the local deeds account for the fact that the road is west of the line between Sections 1 and 2. Corner 1 was originally established as a wood post in 1819. Corner 2 was originally established as a wood post 55 links (36.3 feet) east of Corner 1 in 1820.



Carol Cunningham
 Carol Cunningham, County Surveyor

James S. Swift
 James S. Swift, IN LS 20200054
 November 28, 2023



SECTION CORNER RECORD

NW 000-750

BOONE COUNTY SURVEYOR'S OFFICE

State Plane grid coordinates NAD83 (2011):

Corner 1: North: 1745543.32 East: 3085177.07 (U.S. survey feet)

Corner 2: North: 1745543.25 East: 3085217.663 (U.S. survey feet)

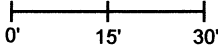
Corner 1: Harrison, 4" disk 'Section Corner', 1 inch above ground

Corner 2: 5/8-inch diameter rebar with metal cap stamped 'Boone County Surveyor' 14 inches deep.

Indiana tie card references:

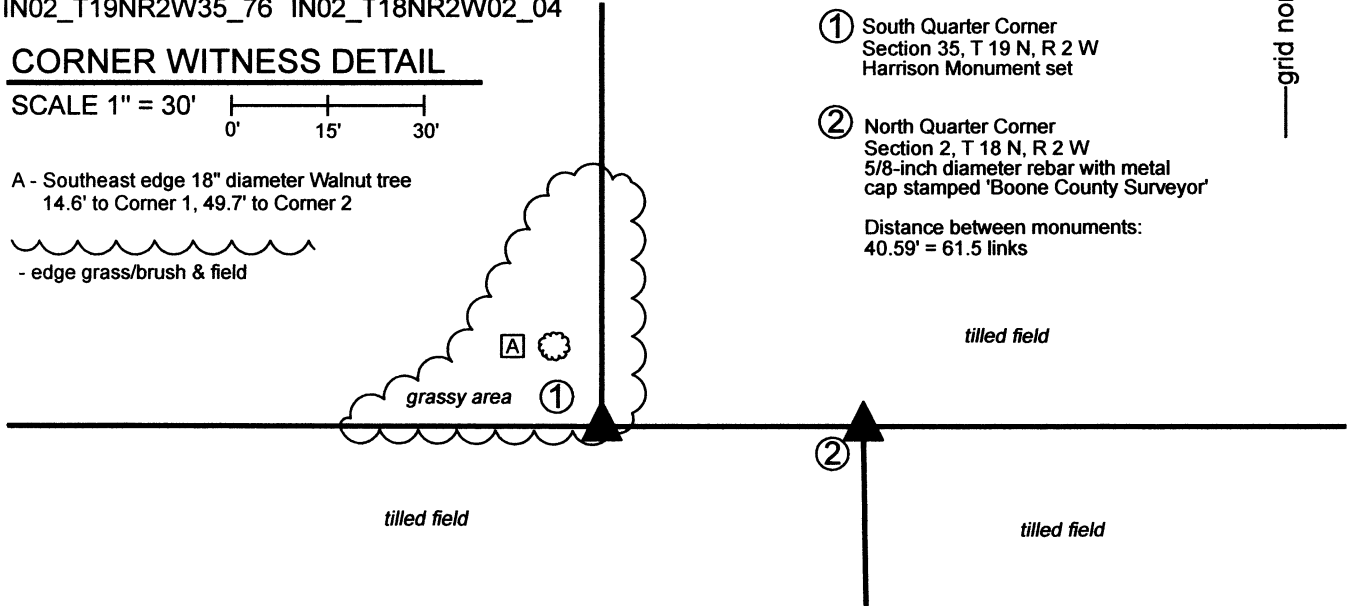
IN02_T19NR2W35_76 IN02_T18NR2W02_04

CORNER WITNESS DETAIL

SCALE 1" = 30' 

A - Southeast edge 18" diameter Walnut tree
14.6' to Corner 1, 49.7' to Corner 2


- edge grass/brush & field



① South Quarter Corner
Section 35, T 19 N, R 2 W
Harrison Monument set

② North Quarter Corner
Section 2, T 18 N, R 2 W
5/8-inch diameter rebar with metal
cap stamped 'Boone County Surveyor'

Distance between monuments:
40.59' = 61.5 links



The Harrison monument at Corner 1 was set over the remnants of the base of a wood post found and in place of a short section of steel t-post found driven into the remnants of the post.

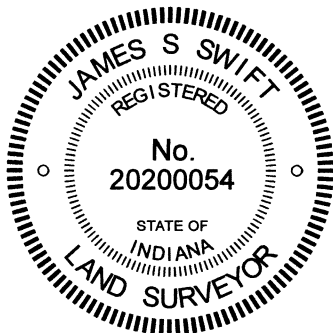
A BCS record dated February 26, 1870 states, with respect to Corner 1, "Reestablished from Oak. Set rock 20,10,5 marked +." A BCS record dated January 21-22, 1873 states, with respect to Corner 2, "Est. 61 1/2 links east of the corner, sec. 35. Set rock 11,8, 5 1/2 +."

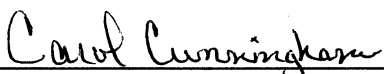
Neither recent BCS tie cards nor recorded surveys were found referencing these corner.

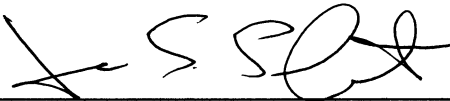
Excavation was performed at these corners on October 29 and November 11, 2019. A steel t-post was found at the surface of the ground at the apparent location of Corner 1, being at the intersection of distinct field divisions to the north, east and west. Excavation revealed that the short section of t-post was driven into the fragments of the base of a post found at 12 inches deep. The post appeared to be of redwood material. Fragments of fencing were found in the ground indicating a former fence to the north. The stone called in the 1873 record was found lying on top of the ground, clearly displaced from the corner, approximately 100 feet northwest of the fragments of post. Manual excavation and substantial probing of an area 61 links east of the fragments of post revealed no evidence of Corner 2 beyond the east-west field division.

The position of the t-post and fragments of redwood post fit well with local evidence in the form of the field divisions and the relative positions of this post and the computed closing corner at 61-1/2 links east fit reasonably well with proximate evidence 1/4 and 1/2 miles to the east and west, respectively. The t-post and fragments of redwood post were held as marking Corner 1. A Harrison monument was set over the fragments of post, in place of the t-post to mark Corner 1 on November 11, 2019. Corner 2 was not monumented at that time, pending the establishment of the southeast corner of Section 35. That corner was set in late 2022. Corner 2 was established on the township line as defined by Corner 1 and said southeast corner of Section 35, at a point 61-1/2 links east of Corner 1. A 24-inch length of 5/8-inch diameter rebar with metal cap stamped 'Boone County Surveyor' was set at this position on March 2, 2023.

Corner 1 was originally established as a wood post in 1819. Corner 2 is not an original federal corner.




Carol Cunningham, County Surveyor


James S. Swift, IN LS 20200054

March 14, 2023

Jefferson
Township

Section 35
T19N, R2W

Section 2
T18N, R2W

SECTION CORNER RECORD

BOONE COUNTY SURVEYOR'S OFFICE

NW 000-800

State Plane grid coordinates NAD83 (2011):

Corner 1: North: 1745547.30 East: 3082530.02 (U.S. survey feet)

Corner 2: North: 1745547.23 East: 3082574.74 (U.S. survey feet)

Type of monuments: INDOT Type B monument

Depth: flush

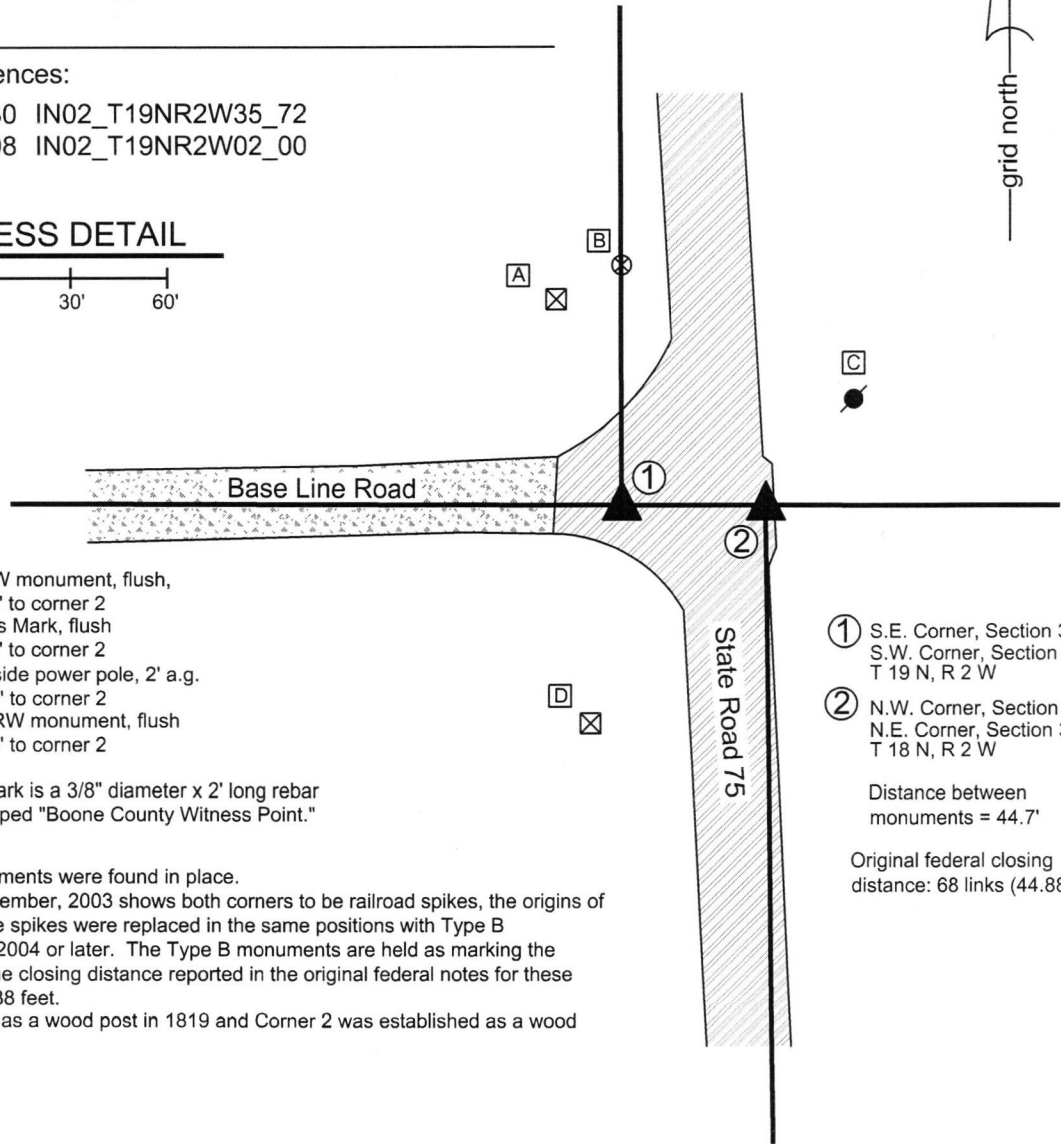
Indiana tie card references:

IN02_T19NR2W34_80 IN02_T19NR2W35_72

IN02_T18NR2W03_08 IN02_T19NR2W02_00

CORNER WITNESS DETAIL

SCALE 1" = 60'



- A - S.E. corner INDOT RW monument, flush,
62.8' to corner 1, 86.5' to corner 2
- B - Boone County Witness Mark, flush
74.3' to corner 1, 86.8' to corner 2
- C - Mag Nail set in S.W. side power pole, 2' a.g.
76.9' to corner 1, 40.3' to corner 2
- D - N.W. corner, INDOT RW monument, flush
65.5' to corner 1, 83.0' to corner 2

Boone County witness mark is a 3/8" diameter x 2' long rebar bearing a metal cap stamped "Boone County Witness Point."

The INDOT Type B monuments were found in place.

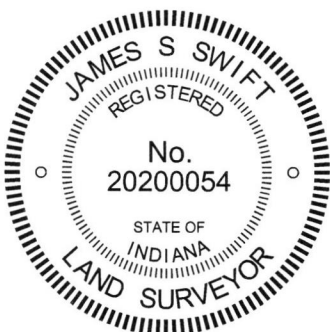
A BCS tie card dated December, 2003 shows both corners to be railroad spikes, the origins of which are not known. The spikes were replaced in the same positions with Type B monuments by INDOT in 2004 or later. The Type B monuments are held as marking the corners. It is noted that the closing distance reported in the original federal notes for these corners is 68 links, or 44.88 feet.

Corner 1 was established as a wood post in 1819 and Corner 2 was established as a wood post in 1820.

- ① S.E. Corner, Section 34
S.W. Corner, Section 35
T 19 N, R 2 W
- ② N.W. Corner, Section 2
N.E. Corner, Section 3
T 18 N, R 2 W

Distance between monuments = 44.7'

Original federal closing distance: 68 links (44.88')



Kenneth E. Hedge
Kenneth E. Hedge, County Surveyor

James S. Swift
James S. Swift, IN LS 20200054
March 23, 2017

Jefferson Township

Section 34 T19N, R2W	Section 35 T19N, R2W
Section 3 T18N, R2W	Section 2 T18N, R2W

SECTION CORNER RECORD

BOONE COUNTY SURVEYOR'S OFFICE

NW 050-700

State Plane grid coordinates NAD83 (2011):

North: 1748167.53 East: 3087816.23 (U.S. survey feet)

Type of monument: Harrison, 4" disk 'Section Corner'

Depth: six inches below adjacent gravel road surface

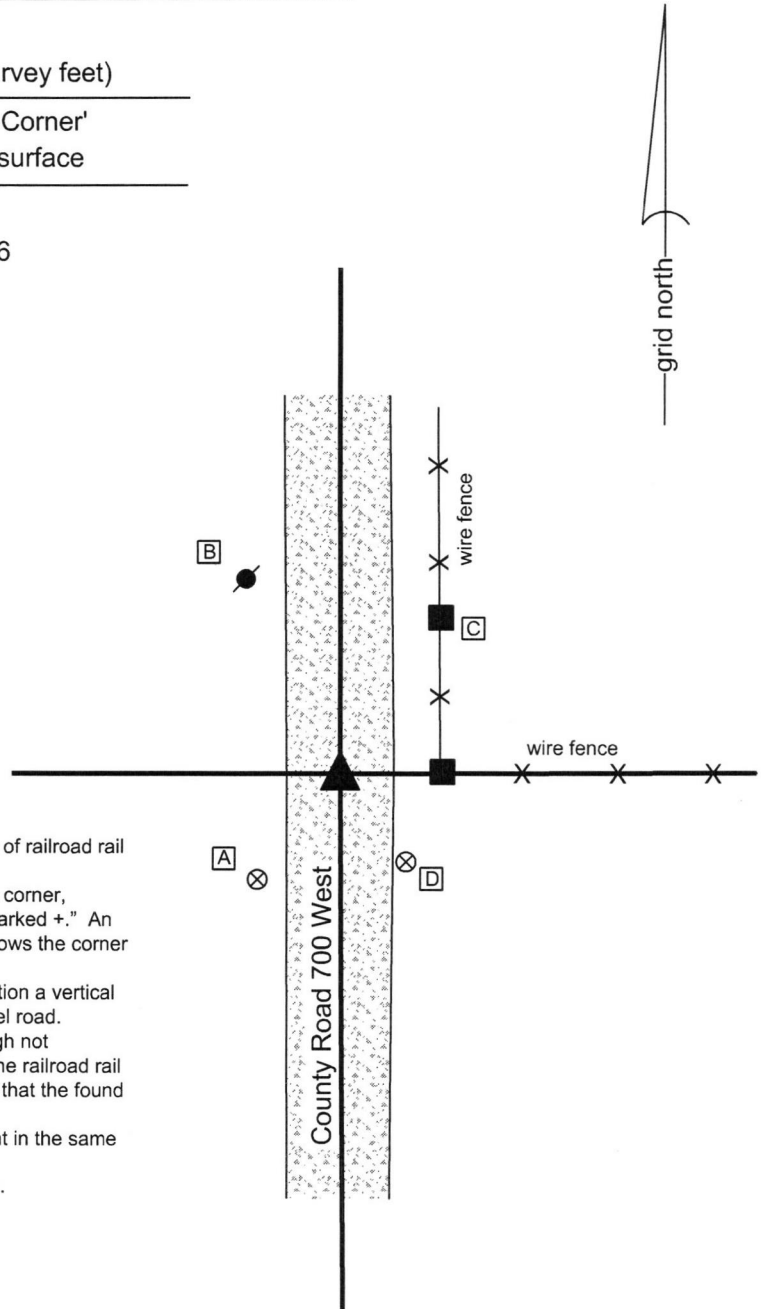
Indiana tie card references:

IN02_T19NR2W35_44 IN02_T19NR2W36_36

CORNER WITNESS DETAIL

SCALE 1" = 40'

- A - Boone County witness mark, flush, 27.8'
- B - Mag nail set in S.E. side power pole, 2' a.g., 43.2'
- C - Mag nail set in W. side power pole, 1 a.g., 38.1'
- D - Boone County witness mark, flush, 22.8'



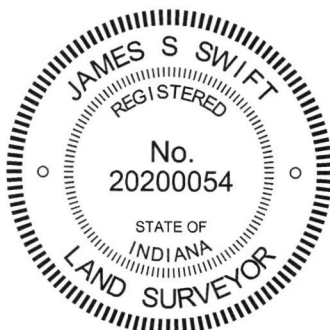
The Harrison monument was set in place of a vertical section of railroad rail found.

A BCS record dated May 11, 1870 states, with respect to this corner, "Reestablished from Oak down but here. Set Rock 20,6, 8 marked +." An undated BCS tie card believed to date from the late 1960s shows the corner as "Found Stone."

This corner was excavated on July 19, 2016. Prior to excavation a vertical section of railroad rail was found at 7 inches deep in the gravel road. Excavation revealed no further evidence of the corner. Though not specifically stated on the undated tie card, it is believed that the railroad rail was set in association with the creation of that document and that the found stone was most likely removed and replaced with the rail.

The rail was removed and replaced with a Harrison monument in the same position.

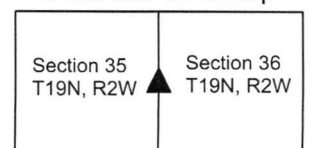
This corner was originally established as a wood post in 1822.



Kenneth E. Hedge
 Kenneth E. Hedge, County Surveyor

James S. Swift
 James S. Swift, IN LS 20200054
 March 23, 2017

Jefferson Township



SECTION CORNER RECORD

NW 050-800

BOONE COUNTY SURVEYOR'S OFFICE

State Plane grid coordinates NAD83 (2011):

North: 1748194.09 East: 3082530.02 (U.S. survey feet)

Type of monument: INDOT Type B monument

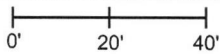
Depth: Flush with adjacent road surface

Indiana tie card references:

IN02_T19NR2W34_44 IN02_T19R2W35_36

CORNER WITNESS DETAIL

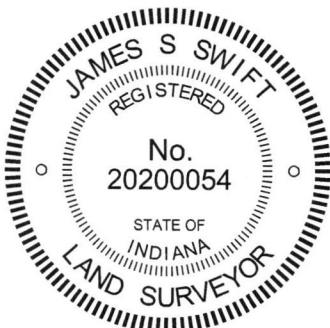
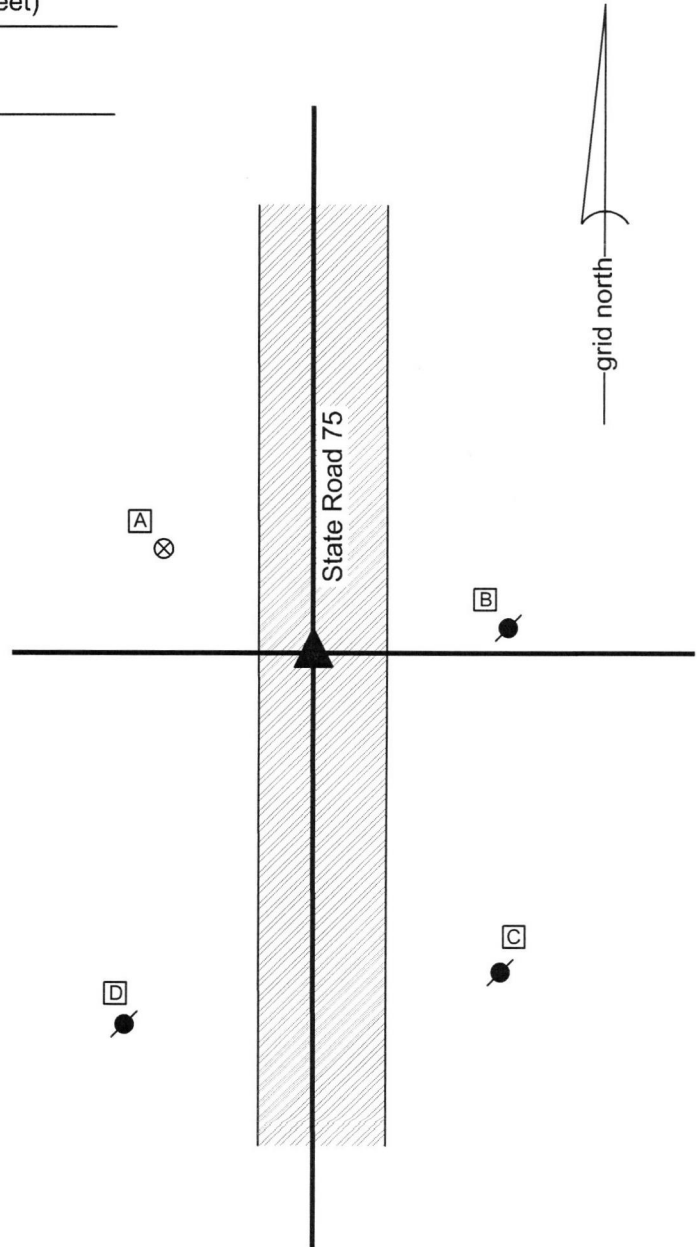
SCALE 1" = 40'



- A - Boone County witness mark, flush, 37.9'
- B - Mag nail set in W. side power pole, 0.5' a.g., 39.0'
- C - Mag nail set in N.W. side power pole, 2' a.g., 75.3'
- D - Mag nail set in N.E. side power pole, 2' a.g., 84.8'

Boone County witness mark is a 3/8" diameter x 2' long rebar bearing a metal cap stamped "Boone County Witness Point."

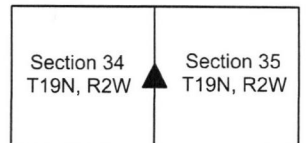
The INDOT Type B monument was found in place. A BCS tie card dated June 20, 1982 shows the corner to be a PK Nail. A BCS tie card dated December, 2003 shows the corner to be a Type C monument. The found monument is believed to be the same monument shown on this document, being a Type B, not Type C, monument per INDOT standards. The origin of the monument is not known. Excavation was not performed at this corner as it is located within a state highway. The Type B monument was held as marking the corner. This corner was originally established as a wood post in 1822.



Kenneth E. Hedge
Kenneth E. Hedge, County Surveyor

James S. Swift
James S. Swift, IN LS 20200054
March 23, 2017

Jefferson Township



SECTION CORNER RECORD

BOONE COUNTY SURVEYOR'S OFFICE

NW 100-750

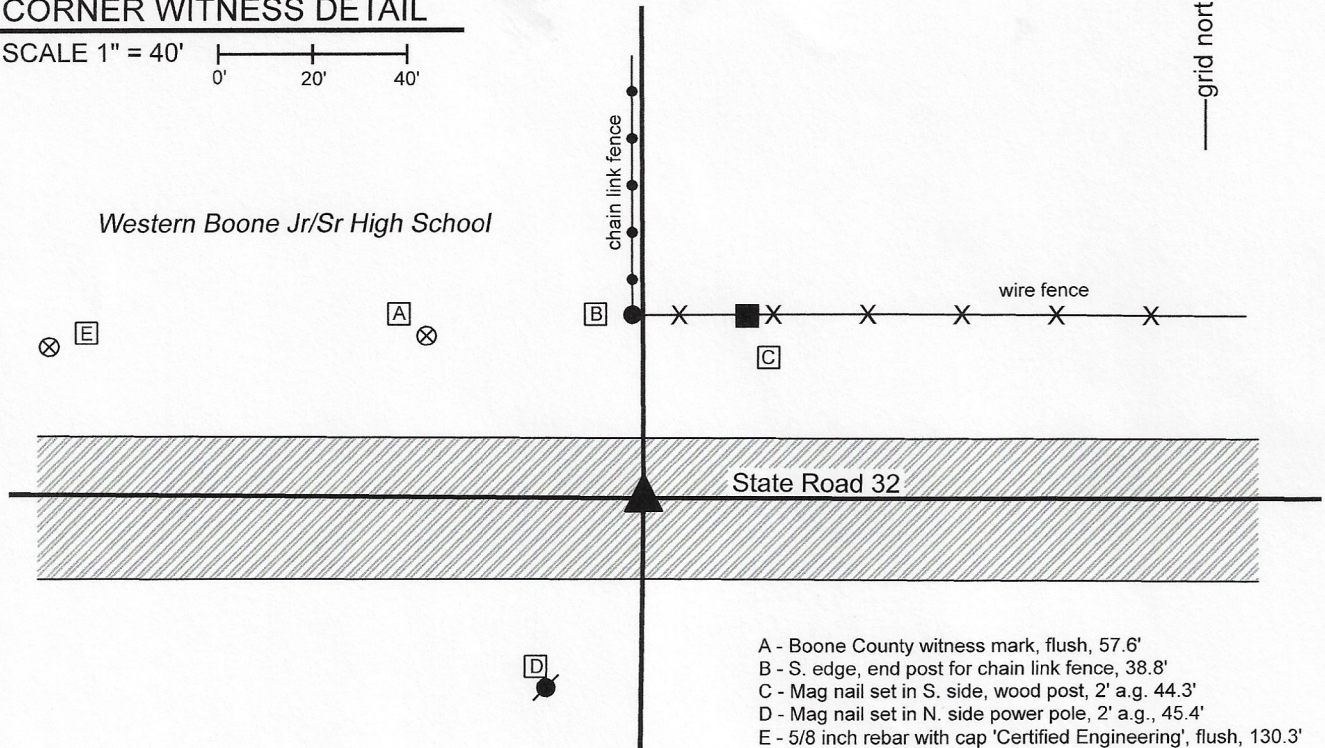
State Plane grid coordinates NAD83 (2011):
 North: 1750821.89 East: 3085168.16 (U.S. survey feet)

Type of monument: Plug in monument box, INDOT Type B
 Depth: Flush with adjacent road surface

Indiana tie card references:
 IN02_T19NR2W26_76 IN02_T19NR2W35_04

CORNER WITNESS DETAIL

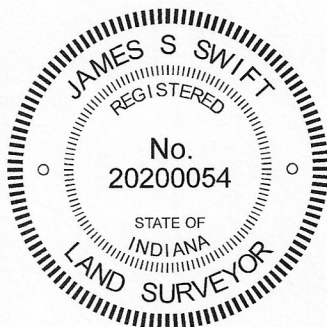
SCALE 1" = 40'



- A - Boone County witness mark, flush, 57.6'
- B - S. edge, end post for chain link fence, 38.8'
- C - Mag nail set in S. side, wood post, 2' a.g., 44.3'
- D - Mag nail set in N. side power pole, 2' a.g., 45.4'
- E - 5/8 inch rebar with cap 'Certified Engineering', flush, 130.3'

The Type B monument was found in place and held as marking the corner. A BCS record dated August 28-29 1881 shows the corner as being established and monumented by a rock 15x6x10 inches marked +. As this corner falls in a state road, no large scale excavation was performed. A tie card provided by INDOT, dated November 1998, shows the corner as a railroad spike flush. A Survey Monument Replacement Surveyor's Report recorded as Instrument 200700005107 in the Office of the Boone County Recorder indicates that between May 2006 and May 2007, a previously existing monument (type not identified) was replaced with a Type B monument, believed to be the same monument as is present at this time. The report notes that the new monument was found to be 0.07 foot northeast of the previous monument. The Type B monument is held as making the corner in the position found.

This corner was originally established as a wood post in 1822.



Kenneth E. Hedge
 Kenneth E. Hedge, County Surveyor

James S. Swift
 James S. Swift, IN LS 20200054
 May 11, 2020

Jefferson Township

Section 26
 T19N, R2W

Section 35
 T19N, R2W

SECTION CORNER RECORD

BOONE COUNTY SURVEYOR'S OFFICE

NW 100-800

State Plane grid coordinates NAD83 (2011):

North: 1750841.63 East: 3082517.70 (U.S. survey feet)

Type of monument: plug in monument box, INDOT Type B

Depth: Flush with adjacent road surface

Indiana tie card references:

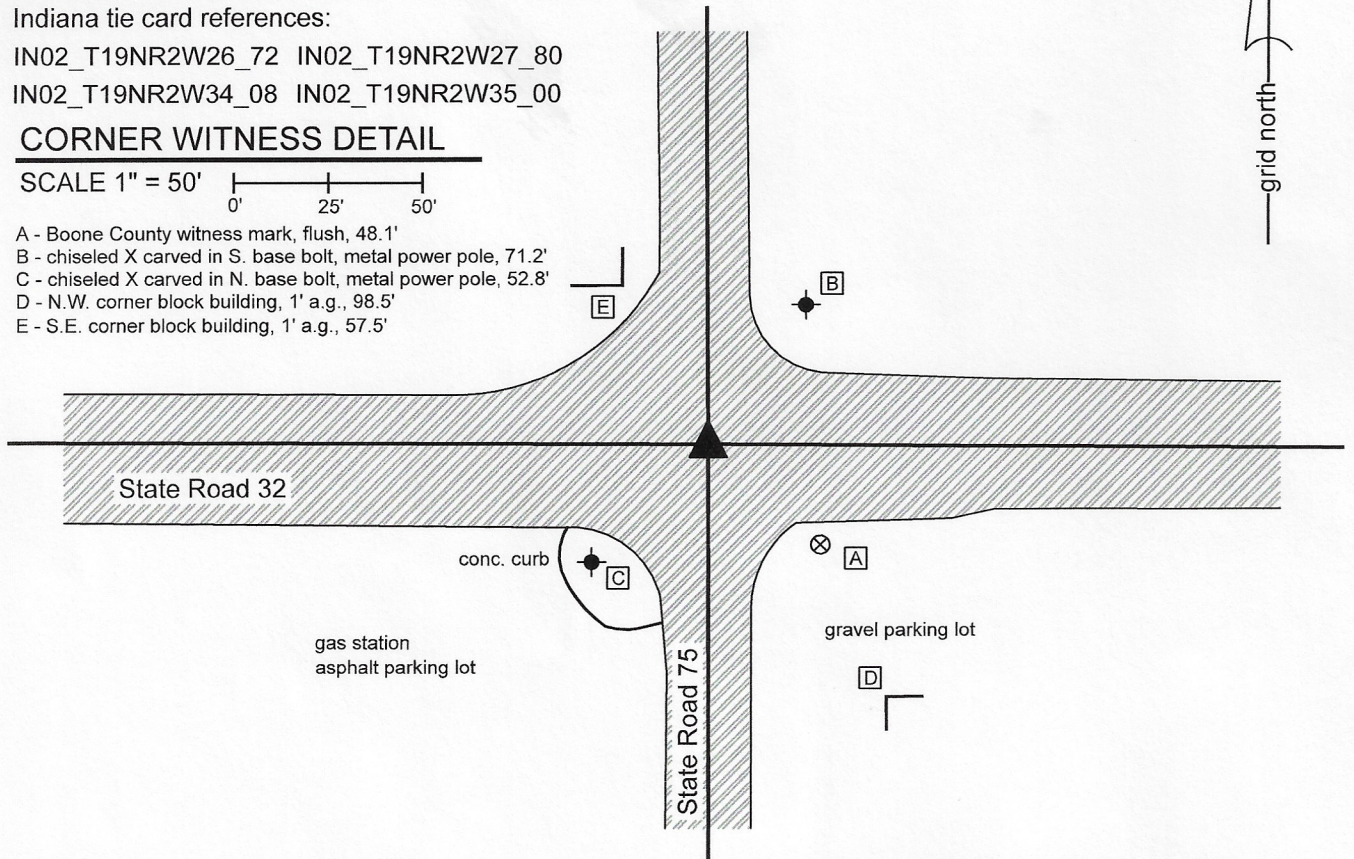
IN02_T19NR2W26_72 IN02_T19NR2W27_80

IN02_T19NR2W34_08 IN02_T19NR2W35_00

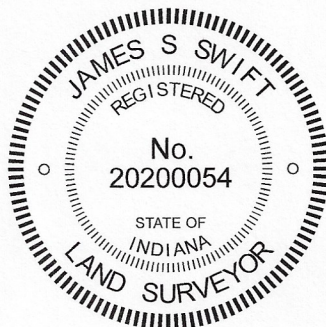
CORNER WITNESS DETAIL

SCALE 1" = 50'

- A - Boone County witness mark, flush, 48.1'
- B - chiseled X carved in S. base bolt, metal power pole, 71.2'
- C - chiseled X carved in N. base bolt, metal power pole, 52.8'
- D - N.W. corner block building, 1' a.g., 98.5'
- E - S.E. corner block building, 1' a.g., 57.5'



The Type B monument was found in place and held as marking the corner. A BCS record of September 12, 1912 states, with respect to this corner, "Stone in crossing long recognized as corner." A BCS tie card dated June 30, 1982 shows the corner as a bolt in the center of the intersection of the two state roads. A BCS tie card dated August 4, 1995 shows the corner with ties but does not reference a specific monument. A tie card which is believed to have been supplied by INDOT, dated November 10, 1998, shows the corner as an Iron Rod in Pod. BCS tie cards of July 30, 1996 and December, 2003 show the corner as a Type C monument. A Survey Monument Replacement Surveyor's Report recorded as Instrument 200700005107 in the Office of the Boone County Recorder states that a new Type B monument was set following resurfacing operations, between May 2006 and May, 2007. The report indicates that the new monument was set 0.07 foot northeast of the previous monument. The ties that remain from the various tie cards, including ties to the corners of the two block buildings shown on this drawing, match the distances measured in the field within 0.1 foot. The Type B monument is held as the corner in the current position, with uncertainties of approximately 0.1 foot in all directions. This corner was originally established as a wood post in 1822.



Kenneth E. Hedge
 Kenneth E. Hedge, County Surveyor

James S. Swift
 James S. Swift, IN LS 20200054
 May 11, 2020

Jefferson Township

Section 27 T19N, R2W	Section 26 T19N, R2W
Section 34 T19N, R2W	Section 35 T19N, R2W