

SECTION CORNER RECORD

NE 000-1000

BOONE COUNTY SURVEYOR'S OFFICE

State Plane grid coordinates NAD83 (2011):

North: 1746657.46 East: 3177847.13 (U.S. survey feet)

North: 1746655.71 East: 3177785.12 (U.S. survey feet)

Type of monument: Railroad spike

Depth: Flush with adjacent road surface

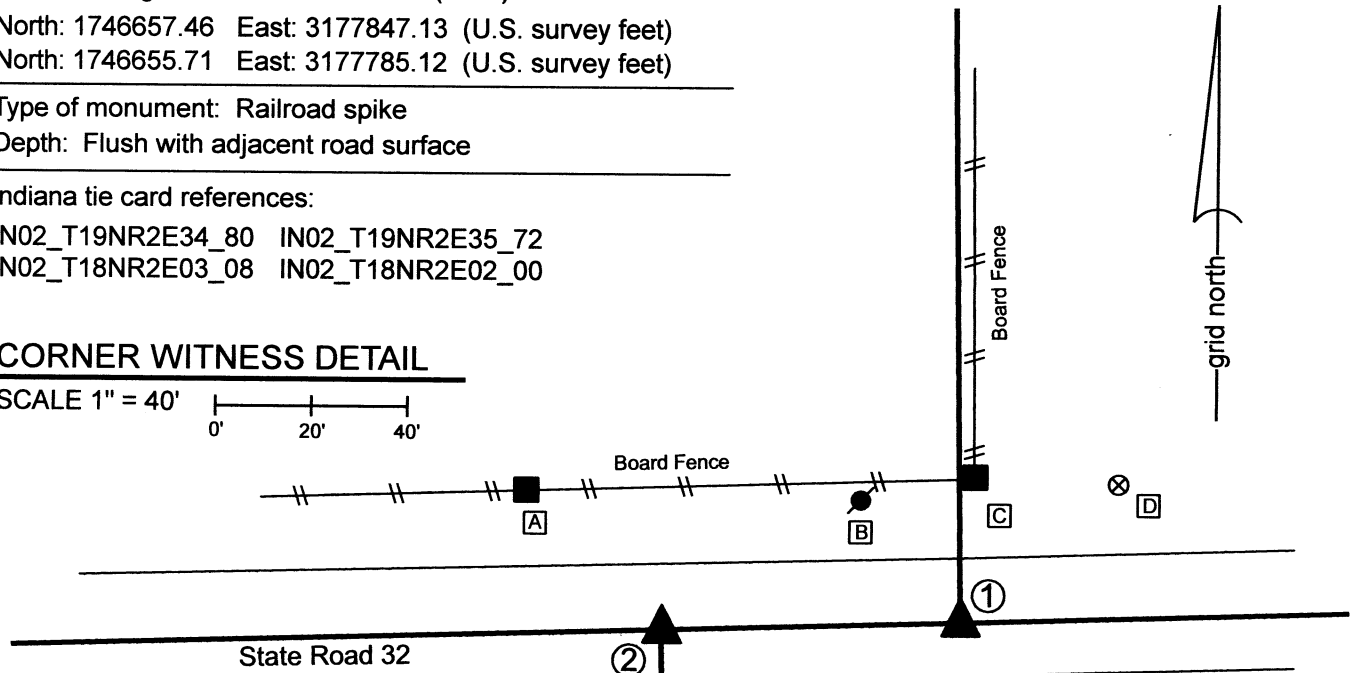
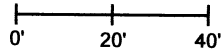
Indiana tie card references:

IN02_T19NR2E34_80 IN02_T19NR2E35_72

IN02_T18NR2E03_08 IN02_T18NR2E02_00

CORNER WITNESS DETAIL

SCALE 1" = 40'



A - Mag nail set in S. edge wood post, 94.5' to corner 1, 40.7' to corner 2

B - Nail in bottle cap found in S.E. side power pole, 1' a.g., 31.2' to corner 1, 50.3' to corner 2

C - Mag nail set in S. side wood post, 0.6' a.g., 30.1' to corner 1, 72.1' to corner 2

D - Boone County witness mark, flush 43.6' to corner 1, 99.5' to corner 2

① S.E. Corner, Section 34
S.W. Corner, Section 35
T 19 N, R 2 E

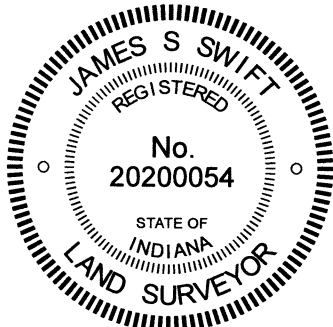
② N.W. Corner, Section 2
N.E. Corner, Section 3
T 18 N, R 2 E

Distance between monuments = 62.04' (94 links)

The railroad spikes were set at calculated positions.

Prior to the establishment of these corners, no existing monuments were found marking the corners, nor were consistent, widely accepted positions found documented for the corners. A Mag nail found in the general vicinity of Corner 1 does not fit with local evidence and was not held as marking the corner. The available evidence which indicates the original positions of these corners was found in the form of the existing roadway of S.R. 32 and a section of ancient fence found existing from approximately one-quarter mile north of Corner 1, north for approximately 250 feet, at which point an ancient corner post exists at the corner of fences to the south and east. The post is witnessed by a rebar situated at the northwest edge of the post. It was discovered that a line prolonged from the west quarter corner of section 35 (see BCS Corner NE-050-1000) through the aforementioned corner post coincides precisely with the remaining section of old fence south of said post. It was also discovered that computing the southeast corner of section 34 (Corner 1) at the point where said prolonged line intersects the center of SR 32, this position fits well with the relative positions of the southwest and south quarter corners of Section 34 and the northwest and north quarter corners of Section 3. Computing the position of Corner 2 at the record closing offset of 94 links west of Corner 1 produces a position which fits generally well with deed descriptions in Section 2 and 3. The computed positions were held as marking the corners. These positions were supplied to INDOT for purposes of determining the locations of the corners for a Location Route Control Survey by INDOT, certified by Frank T. Luse, INDOT District Surveyor, recorded in Survey Book 13, page 50. The computed positions were held by INDOT for the surveys associated with the reconstruction of the intersection of SR 32 and US 421 in 2015. The railroad spikes were set on August 28, 2015. It is noted that a board fence north and slightly east of Corner 1 appears to serve as an animal enclosure, is not associated with existing deed lines and does not appear to be evidence of the original section lines.

Corner 1 was originally established as a wood post in 1819. Corner 2 was originally established as a wood post in 1821.



Carol Cunningham
Carol Cunningham, County Surveyor

James S. Swift
James S. Swift, IN LS 20200054

March 23, 2017, Revised May 31, 2023

Union Township

Section 34 T19N, R2E	Section 35 T19N, R2E
Section 3 T18N, R2E	Section 2 T18N, R2E

SECTION CORNER RECORD

NE 000-1050

BOONE COUNTY SURVEYOR'S OFFICE

State Plane grid coordinates NAD83 (2011):

Corner 1: North: 1746733.91 East: 3180508.97 (U.S. survey feet)

Corner 2: North: 1746732.57 East: 3180462.40 (U.S. survey feet)

Type of monument: Corner 1: Mag Nail, Corner 2: Iron pin (rebar) in concrete

Depth: Flush with adjacent road surface

Indiana tie card references:

IN02_T18NR2E02_04 IN02_T19NR2E35_76

① South Quarter Corner
Section 35, T 19 N, R 2 E

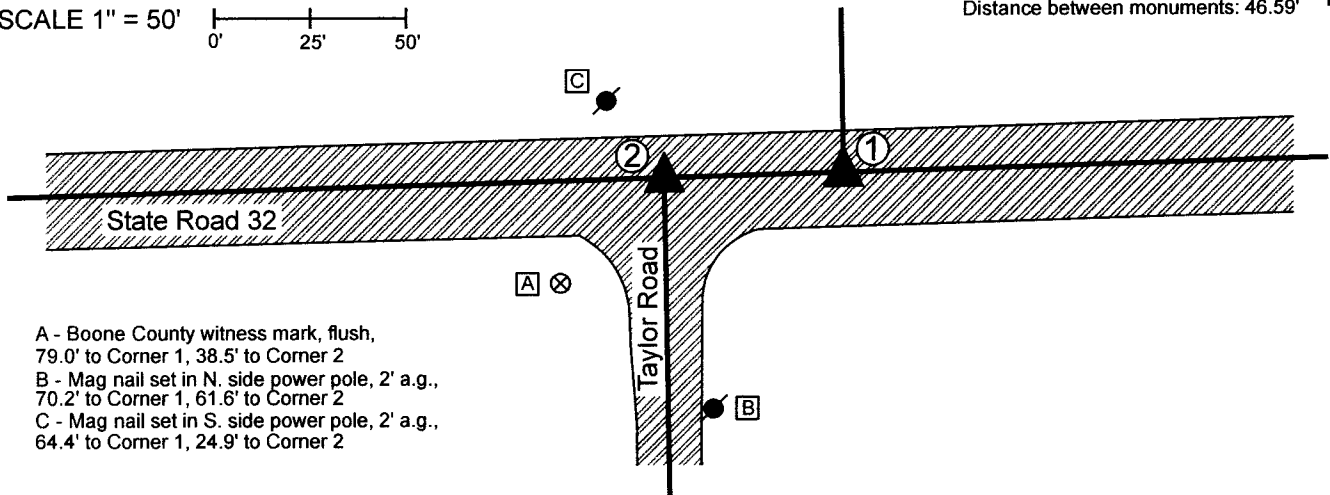
② North Quarter Corner,
Section 2, T 18 N, R 2 E

Distance between monuments: 46.59'



CORNER WITNESS DETAIL

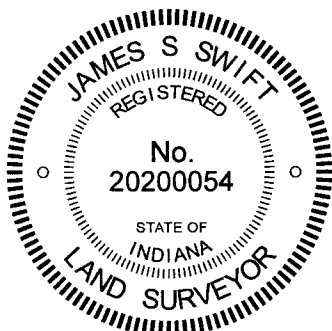
SCALE 1" = 50'



- A - Boone County witness mark, flush, 79.0' to Corner 1, 38.5' to Corner 2
- B - Mag nail set in N. side power pole, 2' a.g., 70.2' to Corner 1, 61.6' to Corner 2
- C - Mag nail set in S. side power pole, 2' a.g., 64.4' to Corner 1, 24.9' to Corner 2

The iron pin marking Corner 2 was found in place and held as marking the corner. The Mag Nail marking Corner 1 was established at a calculated position. A BCS record of June 21, 1861 states, with respect to Corner 1, "Reestablished from which...." with references to bearing trees. This entry clearly shows that Corner 1 was established at the midpoint of the line connecting the southeast and southwest corners of Section 35. A record of April 23, 1877 states that the rock, presumably set in 1861, was marked. No specific descriptions of Corner 2 were found in the BCS Surveyor's Record. As these corners fall in a State Road, no excavation was performed and no search was made for the stone referenced as marking Corner 1. A BCS tie card dated January 18, 1994 shows Corner 2 as being marked by a railroad spike. A Location Control Route Survey recorded as Instrument 0201777 in the Office of the Boone County Recorder shows Corner 2 as a 3/4-inch I. Pin Fnd. per County Surveyor ties, presumably referencing the 1994 tie card. This document shows Corner 1 as a Mag Nail set 42.03 feet east of Corner 2. Per the stations shown on that survey, Corner 1 was established on that survey at a point equidistant from the southwest and southeast corners of Section 35. While this approach agrees with the 1861 BCS record, it is noted that the southwest corner of Section 35, as established by this office, does not agree with the position held on the Route Survey. Analysis of the properties and deed descriptions in Section 35 indicate that establishing Corner 1 at a point equidistant from the southeast and southwest corners of Section 35 is a reasonable solution and agrees not only with the 1861 BCS record, but works well with distance references for the west half of the southwest quarter, as established at a midpoint of the south line of the southwest quarter, per deeds for properties adjoining the east line of that half-quarter section (see Zaring, Instrument 9607828 and McDavitt, Instrument 201600007164). Two other properties which are nominally tied to Corner 1 (Zaring and Miller, are described per acreage and do not fit as well, but are subject to additional dimensions which control the acreage.) It is noted that a midpoint solution for the southwest corner of the east half of the southeast quarter of Section 35 does not work particularly well and surveyors should use professional judgment when addressing that corner. Notably, the property which appears to adjoin that line on the east (Fodstad, Instrument 201400009343) is described from the east and does not call for the line.

The iron pin marking Corner 2 was held as found. Corner 1 was established at an easterly prolongation of the line connecting Corner 2 and the southwest corner of Section 35 at a point which is equidistant from the southeast and southwest corners of Section 35, per the 1861 BCS record. This position is 4.56 feet east of the position shown as the corner on the 2002 Route Survey. Corner 1 was originally established as a wood post in 1819. Corner 2 is not an original federal corner.



Kenneth E. Hedge
Kenneth E. Hedge, County Surveyor

James S. Swift
James S. Swift, IN LS 20200054
October 11, 2022

Union
Township

Section 35
T19N, R2E



Section 2
T18N, R2E

SECTION CORNER RECORD

NE 000-1100

BOONE COUNTY SURVEYOR'S OFFICE

State Plane grid coordinates NAD83 (2011):

Corner 1: North: 1746807.75 East: 3183170.89 (U.S. survey feet)

Corner 2: North: 1746809.76 East: 3183239.62 (U.S. survey feet)

Type of monument: Iron pins in concrete

Depth: Flush with adjacent road surface

Indiana tie card references:

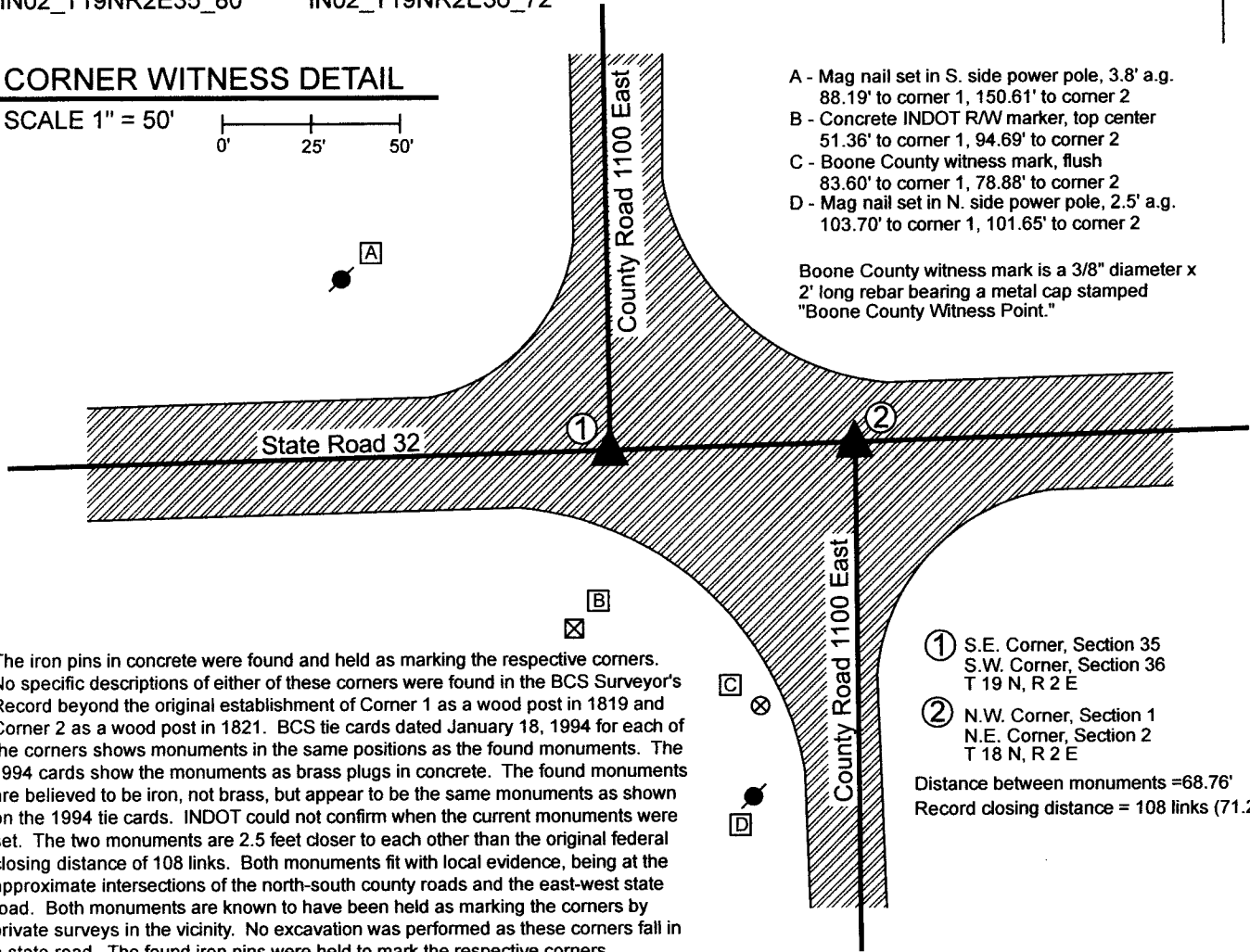
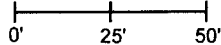
IN02_T18NR2E01_00 IN02_T18NR2E02_08

IN02_T19NR2E35_80 IN02_T19NR2E36_72



CORNER WITNESS DETAIL

SCALE 1" = 50'



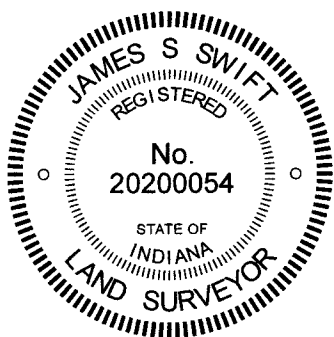
- A - Mag nail set in S. side power pole, 3.8' a.g. 88.19' to corner 1, 150.61' to corner 2
- B - Concrete INDOT R/W marker, top center 51.36' to corner 1, 94.69' to corner 2
- C - Boone County witness mark, flush 83.60' to corner 1, 78.88' to corner 2
- D - Mag nail set in N. side power pole, 2.5' a.g. 103.70' to corner 1, 101.65' to corner 2

Boone County witness mark is a 3/8" diameter x 2' long rebar bearing a metal cap stamped "Boone County Witness Point."

The iron pins in concrete were found and held as marking the respective corners. No specific descriptions of either of these corners were found in the BCS Surveyor's Record beyond the original establishment of Corner 1 as a wood post in 1819 and Corner 2 as a wood post in 1821. BCS tie cards dated January 18, 1994 for each of the corners shows monuments in the same positions as the found monuments. The 1994 cards show the monuments as brass plugs in concrete. The found monuments are believed to be iron, not brass, but appear to be the same monuments as shown on the 1994 tie cards. INDOT could not confirm when the current monuments were set. The two monuments are 2.5 feet closer to each other than the original federal closing distance of 108 links. Both monuments fit with local evidence, being at the approximate intersections of the north-south county roads and the east-west state road. Both monuments are known to have been held as marking the corners by private surveys in the vicinity. No excavation was performed as these corners fall in a state road. The found iron pins were held to mark the respective corners.

- ① S.E. Corner, Section 35
S.W. Corner, Section 36
T 19 N, R 2 E
- ② N.W. Corner, Section 1
N.E. Corner, Section 2
T 18 N, R 2 E

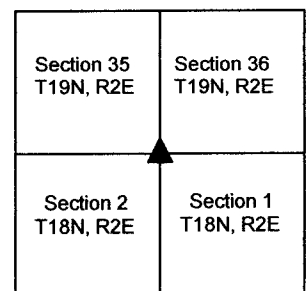
Distance between monuments = 68.76'
Record closing distance = 108 links (71.28')



Kenneth E. Hedge
Kenneth E. Hedge, County Surveyor

James S. Swift
James S. Swift, IN LS 20200054
June 7, 2022

Union Township



SECTION CORNER RECORD

NE 050-1000

BOONE COUNTY SURVEYOR'S OFFICE

State Plane grid coordinates NAD83 (CORS 96):

North: 1749309.77 East: 3177811.93 (U.S. survey feet)

Type of monument: Harrison, 4" disk 'Section Corner'

Depth: Flush with adjacent road surface

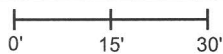
Indiana tie card references:

IN02_T19NR2E34_44

IN02_T19NR2E35_36

CORNER WITNESS DETAIL

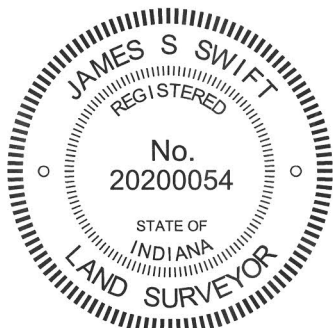
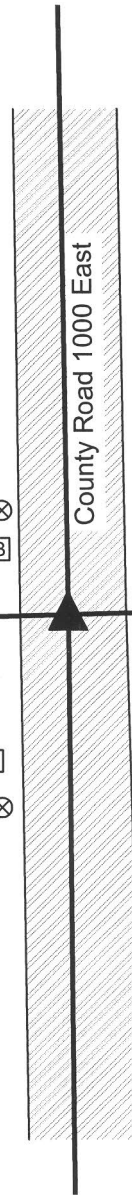
SCALE 1" = 30'



- A - Mag nail set in s. side power pole, 5' a.g., 64.13'
- B - Boone County witness mark, flush, 19.22'
- C - Boone County witness mark, flush, 31.77'
- D - Mag nail set in W. side power pole, 5' a.g., 72.91'

Boone County witness mark is a 3/8" diameter x 2' long rebar bearing a metal cap stamped "Boone County Witness Point."

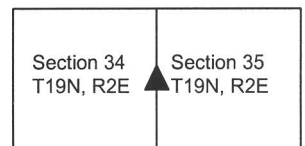
The harrison monument was set in place of a 5/8 inch rebar found. This corner falls at the point where the former Midland Railroad crossed County Road 1000 East by means of a wooden trestle. The relevant portion of the old railroad plans were made available to the surveyor's office by Jerry L. Carter of Carter Land Consultants. These plans do not show information pertaining to the location of the section line. The found rebar is shown as being set on a survey by Hahn and Associates as part of a survey recorded in Survey Book 1, page 38. This survey shows that the rebar was set at a position relative to adjoining deed descriptions and monumentation. Significant excavation was not performed in this area, as the roadway crosses an area of significant fill associated with the ground sloping towards a small creek to the south. The top of the rebar was bent as found with the bend point being at 6 inches deep, below which the rebar appeared to be straight and vertical. The rebar was removed and the harrison monument was set in place of the vertical part of the rebar. This corner was originally established as a wood post in 1821.



Kenneth E. Hedge
 Kenneth E. Hedge, County Surveyor

James S. Swift
 James S. Swift, IN LS 20200054
 March 26, 2013

Union Township



SECTION CORNER RECORD

NE 050-1100

BOONE COUNTY SURVEYOR'S OFFICE

State Plane grid coordinates NAD83 (2011):
North: 1749440.22 East: 3183123.66 (U.S. survey feet)

Type of monument: Harrison, 4" disk 'Section Corner'
Depth: Two inches below adjacent gravel road surface

Indiana tie card references:
IN02_T19NR2E35_44 IN02_T19NR2E36_36

CORNER WITNESS DETAIL

SCALE 1" = 40'



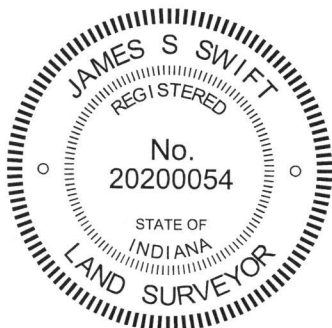
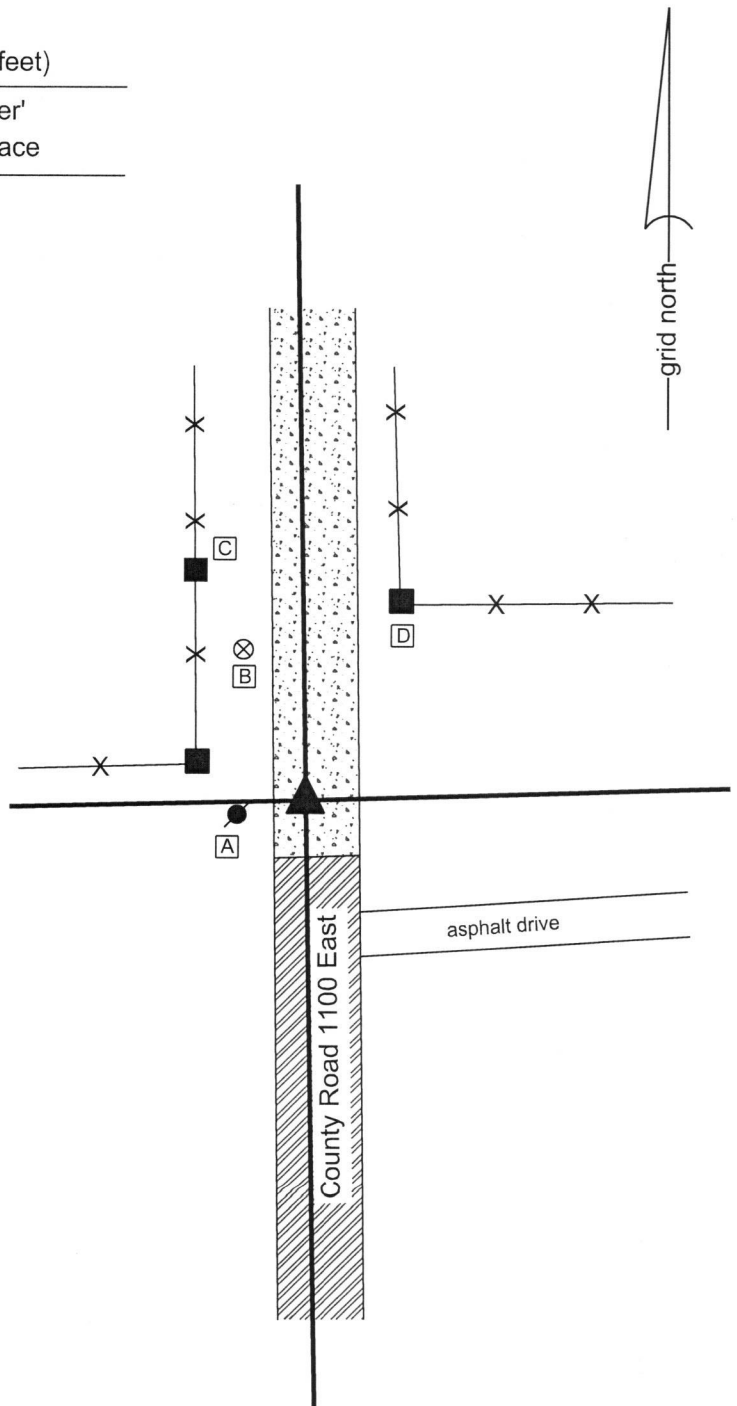
- A - Mag nail set in E. side power pole, 2' a.g., 13.3'
- B - Boone County witness mark, flush, 33.9'
- C - Mag nail set in E. side wood line post, 2' a.g., 53.1'
- D - Mag nail set in S.W. edge wood corner post, 2' a.g., 45.1'

The Harrison monument was set in place of a rebar and flat piece of steel found.
No specific descriptions of this corner were found in the BCS Surveyor's Record beyond the establishment of the corner as a wood post in 1821. A BCS tie card dated March 11, 1982 shows the corner as "found steel stake 3" x 3/8" 1.5' deep." The tie card shows the corner as falling within the right-of-way of the Midland Railroad, close to the south edge of the right-of-way.

This corner was excavated on April 9, 2018. Prior to excavation, a rebar with a red plastic cap was found 2 inches deep in the roadway in agreement with the representation of the corner as shown on the 1982 tie card. The rebar is known to have been held for surveys and deeds in the adjoining sections and is specifically called out as the corner for the adjoining properties to the west, described in Instruments 200700002097 and 201100010402 in the Office of the Boone County Recorder.

Excavation centered on the rebar revealed a 20 inch long flat piece of steel which matches the description of the monument described on the 1982 tie card, found directly below the rebar. Excavation of an area extending 2 feet south, 3 feet north, 1.5 feet east and 1.5 feet west of the rebar revealed no further evidence of the corner. The bottom of the road bed was found to be at approximately 18 inches deep. Excavation was performed to at least 22 inches deep.

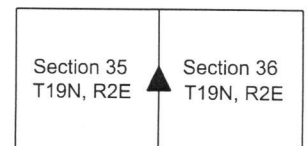
The found rebar, marking the position of the corner as demonstrated on the 1982 tie card, was held as marking the corner. The rebar and flat piece of steel were removed and replaced with a Harrison monument in the same position.



Kenneth E. Hedge
Kenneth E. Hedge, County Surveyor

James S. Swift
James S. Swift, IN LS 20200054
May 30, 2018

Union Township



SECTION CORNER RECORD

NE 100-1000

BOONE COUNTY SURVEYOR'S OFFICE

State Plane grid coordinates NAD83 (NSRS 2007):

North: 1751938.83 East: 3177774.44 (U.S. survey feet)

Type of monument: Harrison, 4" disk 'Section Corner'

Depth: One inch below adjacent road surface

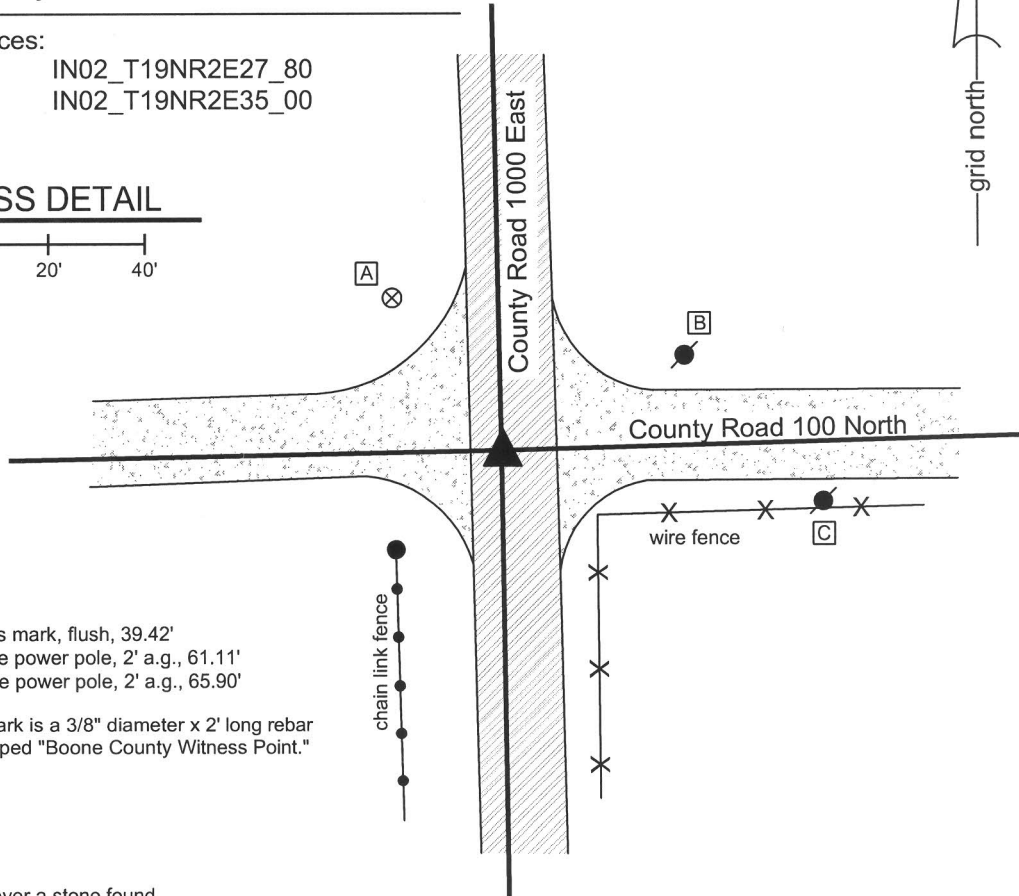
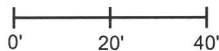
Indiana tie card references:

IN02_T19NR2E26_72 IN02_T19NR2E27_80

IN02_T19NR2E34_08 IN02_T19NR2E35_00

CORNER WITNESS DETAIL

SCALE 1" = 40'



- A - Boone County witness mark, flush, 39.42'
- B - Mag nail set in W. side power pole, 2' a.g., 61.11'
- C - Mag nail set in W. side power pole, 2' a.g., 65.90'

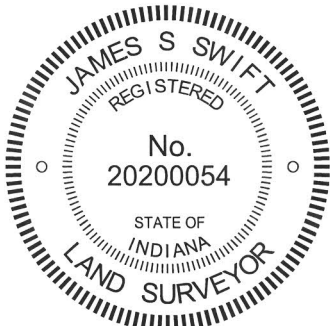
Boone County witness mark is a 3/8" diameter x 2' long rebar bearing a metal cap stamped "Boone County Witness Point."

The harrison monument was set over a stone found.

A BCS tie card dated August 6, 1974 states "No stone found." No specific descriptions of this corner were found in the old BCS Surveyor's Record, beyond the original establishment of the corner as a wood post by federal surveyors.

This corner was excavated on June 17, 2010. Prior to excavation, a rebar was visible at the surface. Excavation revealed a piece of railroad rail on end at 6 inches deep, adjacent to the rebar. The rebar was situated along the east side of the rail. Further excavation revealed a large stone found at 33 inches deep. The stone is 17 inches N-S by 26 inches E-W and was measured to be 22 inches tall at the N. side. The stone is embedded in the clay layer below the road bed, with the top of the stone protruding approximately 3 inches into the bottom of the road bed. The characteristics of this stone, including the depth, being embedded in the clay, the orientation aligned with cardinal directions and the position at the intersection of the two county roads are all consistent with other corner stones found. The fact that the stone is neither vertical nor has any specific identifiable markings is consistent with the fact that it is not mentioned in the BCS Surveyor's Record, as typically only the stones which can be positively identified as being set by County Surveyors are set vertically with markings, while the remaining cornerstones, including those found and held by the old County Surveyors, tend to have the same characteristics as the stone found at this corner. The harrison monument was set directly over the top, center of the stone. The rebar and rail, both removed during excavation, were 3.3 feet north and 0.3 and 0.2 feet east, respectively of the harrison. The 1974 reference to "no stone" indicates that a stone was searched for but not found. It is most likely that the railroad rail was set at that time, after the erroneous determination that other evidence, in the form of a stone, was not present.

This corner was originally established as a wood post 1821.



Kenneth E. Hedge

 Kenneth E. Hedge, County Surveyor

James S. Swift

 James S. Swift, IN LS 20200054
 July 25, 2011

Union Township

Section 27 T19N, R2E	Section 26 T19N, R2E
Section 34 T19N, R2E	Section 35 T19N, R2E

PHOTOGRAPHIC DOCUMENTATION

Date of photography: June 17, 2010

View of the stone from the north.



The stone being exposed. View from above.



The stone exposed. View from above.



View from above the stone, looking east along County Road 100 North.



View from above the stone, looking south along County Road 1000 East.



For details and documentation, refer to related sheet "Section Corner Record."

SECTION CORNER RECORD

BOONE COUNTY SURVEYOR'S OFFICE

NE 100-1050

State Plane grid coordinates NAD83 (NSRS 2007):
 North: 1752014.74 East: 3180426.28 (U.S. survey feet)

Type of monument: Harrison, 4" disk 'Section Corner'
 Depth: six inches below adjacent gravel road surface

Indiana tie card references:
 IN02_T19NR2E26_76
 IN02_T19NR2E35_04

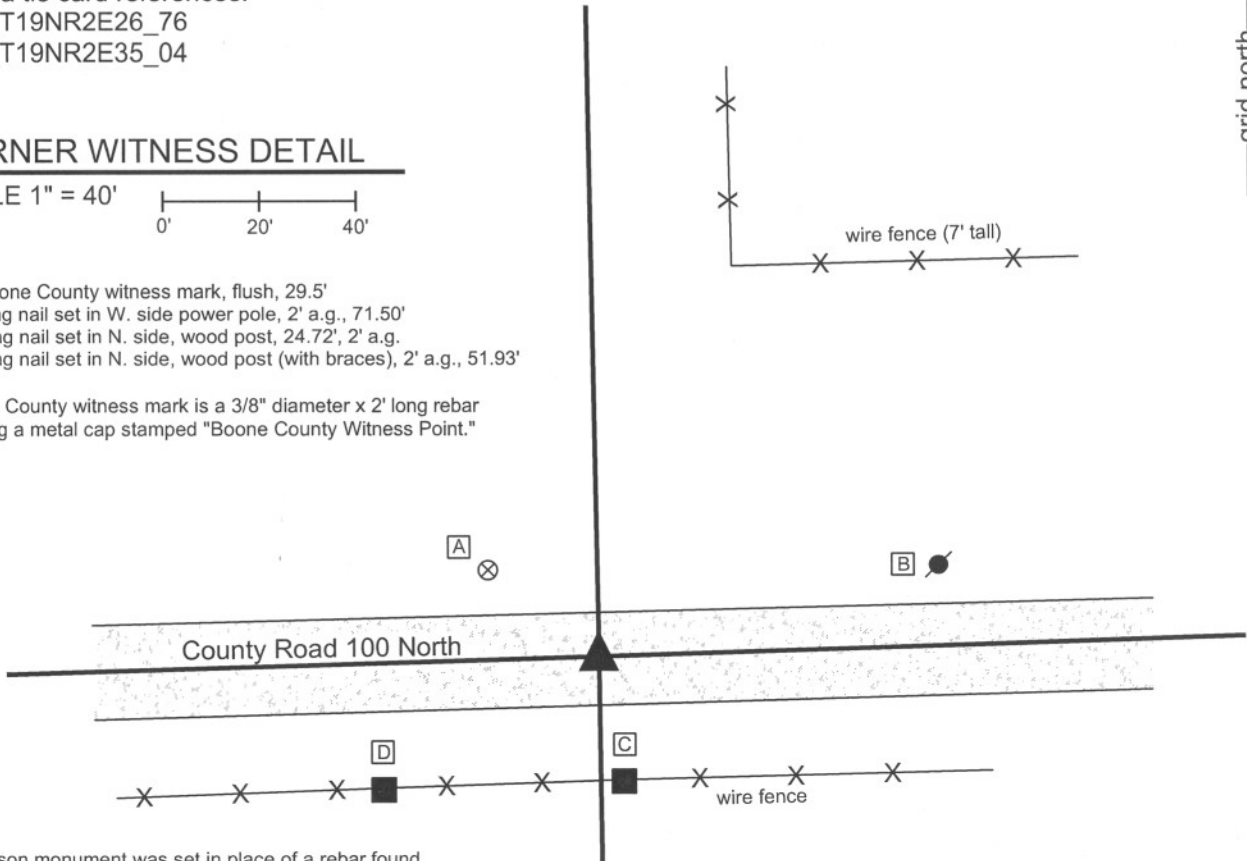
CORNER WITNESS DETAIL

SCALE 1" = 40'



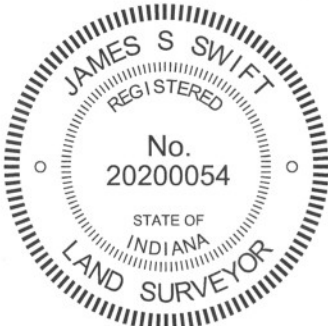
- A - Boone County witness mark, flush, 29.5'
- B - Mag nail set in W. side power pole, 2' a.g., 71.50'
- C - Mag nail set in N. side, wood post, 24.72', 2' a.g.
- D - Mag nail set in N. side, wood post (with braces), 2' a.g., 51.93'

Boone County witness mark is a 3/8" diameter x 2' long rebar bearing a metal cap stamped "Boone County Witness Point."



The harrison monument was set in place of a rebar found.

A BCS tie card dated August 6, 1974 states "stone found." No specific descriptions of this corner were found in the old BCS Surveyor's Record. This corner was excavated on August 18, 2010. Prior to excavation, a 5/8 inch diameter rebar with a red plastic cap (markings indistinguishable) was found near the midpoint of the line connecting the section corners to the east and west. Excavation of an area 12 feet east-west by 10 feet north-south, centered on the rebar, revealed no other evidence of the corner. It was observed that the roadbed in this area is only approximately 10 inches thick. The 1974 tie card does not state any information about what was done with the stone when it was found. It has been observed at other corners documented in 1974 that found stones must have been removed and replaced with a metal monument, being either a section of railroad rail set vertically or a piece of 1/2 inch diameter rebar. The source of the found 5/8 inch rebar is not known. It may be in the same position as the stone found in 1974, but proof of this has not been found. No local evidence of the corner was found in the vicinity of the corner, other than the east-west roadway, whereas the 1974 tie card shows the corner in-line with a fence to the north. Notably, the rebar was nearly equidistant between the stones found at the section corners to the east and west. However, the rebar was not equidistant between the rails which were believed to have been set in 1974 and the stones were only uncovered in 2010. Hence, while the rebar is close to the midpoint between recently found stones, it is not likely that the rebar was purposely set at a calculated midpoint position and may well represent the position of the stone found in 1974. Given the minimal depth of the road bed in this area, it is reasonable to expect that the stone, rail or 1/2 inch rebar may have been removed by a road grader. The position of the rebar was held as providing the best available evidence of the corner and the harrison monument was set at this position. This corner was originally established as a wood post in July, 1821.



Kenneth E. Hedge
 Kenneth E. Hedge, County Surveyor

James S. Swift
 James S. Swift, IN LS 20200054
 July 25, 2011

Union Township

Section 26
 T19N, R2E

Section 35
 T19N, R2E

SECTION CORNER RECORD

BOONE COUNTY SURVEYOR'S OFFICE

NE 100-1100

State Plane grid coordinates NAD83 (NSRS 2007):

North: 1752095.57 East: 3183077.20 (U.S. survey feet)

Type of monument: Harrison, 4" disk 'Section Corner'

Depth: Six inches below adjacent gravel road surface.

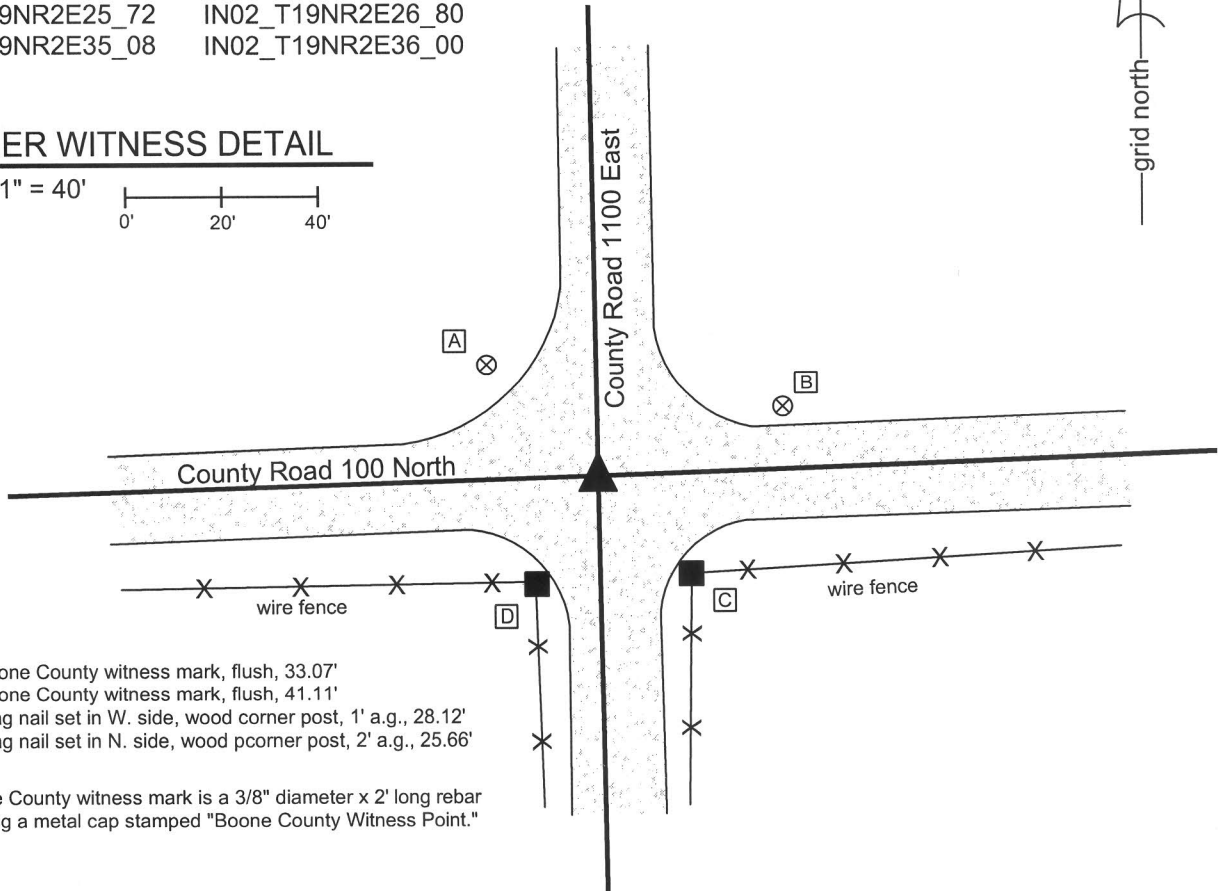
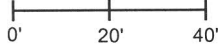
Indiana tie card references:

IN02_T19NR2E25_72 IN02_T19NR2E26_80

IN02_T19NR2E35_08 IN02_T19NR2E36_00

CORNER WITNESS DETAIL

SCALE 1" = 40'



- A - Boone County witness mark, flush, 33.07'
- B - Boone County witness mark, flush, 41.11'
- C - Mag nail set in W. side, wood corner post, 1' a.g., 28.12'
- D - Mag nail set in N. side, wood pcorner post, 2' a.g., 25.66'

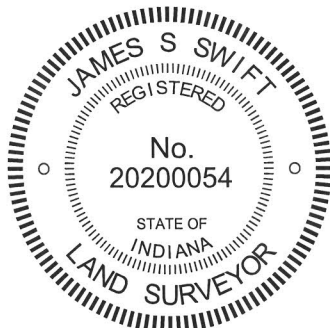
Boone County witness mark is a 3/8" diameter x 2' long rebar bearing a metal cap stamped "Boone County Witness Point."

The harrison monument was set directly over the etched "+" on a stone found.

A BCS record of October 24, 1866 states "Re-Established after having taken additional evidence. Set two Rocks, one 6.5.4 in + Mark on top. Top Rock 13.7.5 1/2 + on top." A BCS tie card dated August 7, 1974 states "No stone found."

This corner was excavated on June 18, 2010. Prior to excavation, a railroad rail was found at 4 inches deep. Excavation revealed a rock found at 24 inches deep, 1 foot west of the rail. The rock was 12 inches N-S by 10 inches E-W by 8 inches tall. A deep crease was visible on the top of the rock but did not appear to be an intentional mark. This stone did not match the description of either of the record stones and was removed. Further excavation revealed the record bottom stone found at 28 inches deep. This stone had a clearly visible etched "+" on the top. The stone matches the proportions of the record bottom stone, but was slightly larger in all dimensions. The top of the stone is approximately 10 inches deep into the clay layer below the road. A 13 inch tall stone above it would have protruded 3 inches into the bottom of the road bed, which is consistent with the depth of many other stones found. The stone was left in place and the harrison monument was set over the etched "+" on the top. The harrison is 0.9 foot north and 2.9 feet west of the position of the railroad rail, which was removed during excavation. The 1968 reference to "no stone found" indicates that a stone was searched for but not found. It is most likely that the railroad rail was set at that time, after the erroneous determination that other evidence, in the form of a stone, was not present.

This corner was originally established as a wood post in June, 1821.



Kenneth E. Hedge
 Kenneth E. Hedge, County Surveyor

James S. Swift
 James S. Swift, IN LS 20200054
 July 25, 2011

Union Township

Section 26 T19N, R2E	Section 25 T19N, R2E
Section 35 T19N, R2E	Section 36 T19N, R2E

PHOTOGRAPHIC DOCUMENTATION

Date of photography: June 18, 2010

View of the stone from above.



Close-up of the stone.



For details and documentation, refer to related sheet "Section Corner Record."