

SECTION CORNER RECORD

NE 000-400

BOONE COUNTY SURVEYOR'S OFFICE

State Plane grid coordinates NAD83 (2011):

Corner 1: North: 1745797.87 East: 3145792.70 (U.S. survey feet)

Corner 2: North: 1745797.55 East: 3145763.66 (U.S. survey feet)

Type of monument: Plug in monument box (INDOT Type B)

Depth: Flush with adjacent asphalt surface

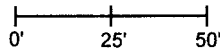
Indiana tie card references:

IN02_T18NR1E02_00 IN02_T18NR1E03_08

IN02_T19NR1E34_80 IN02_T18NR1E35_72

CORNER WITNESS DETAIL

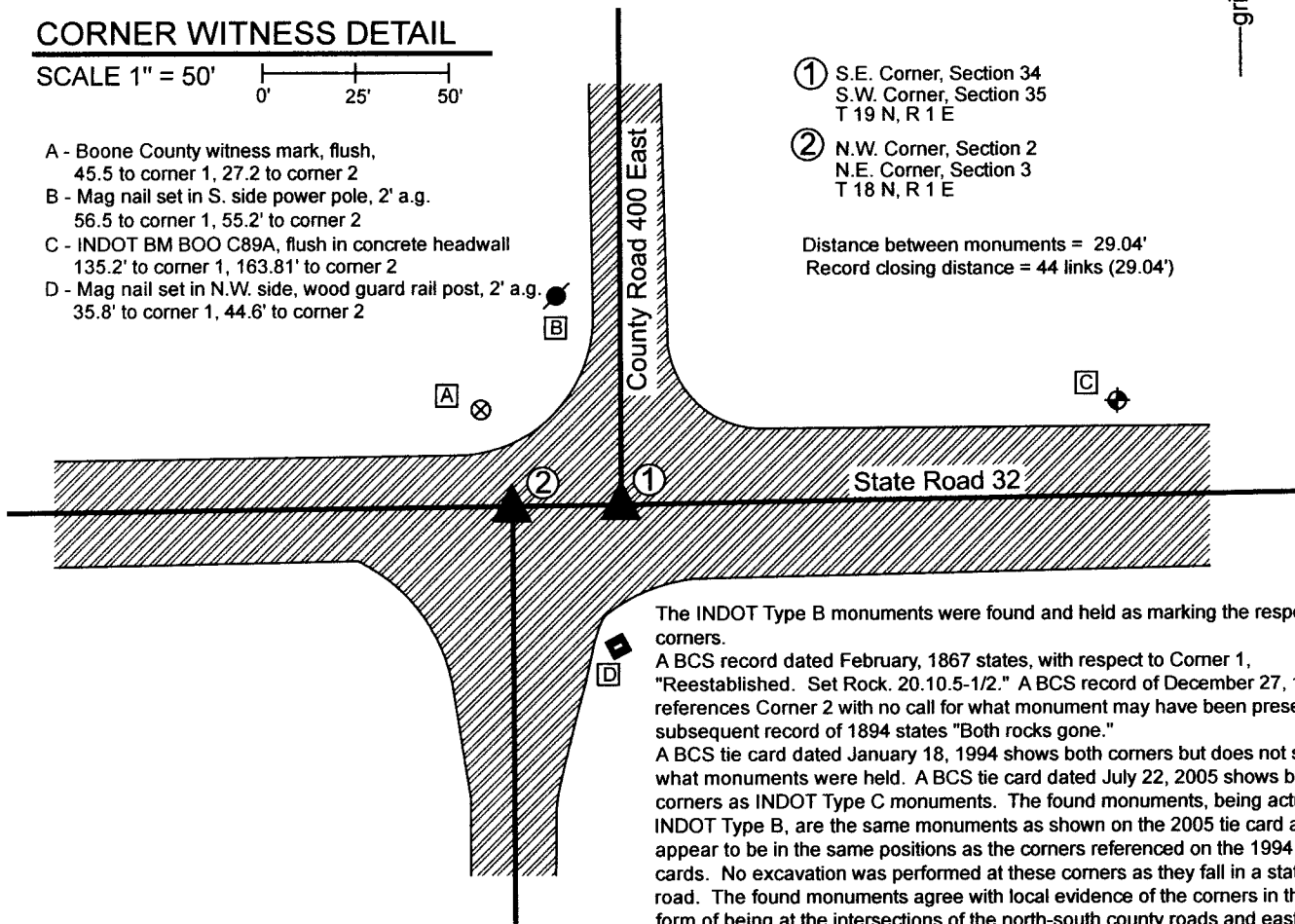
SCALE 1" = 50'



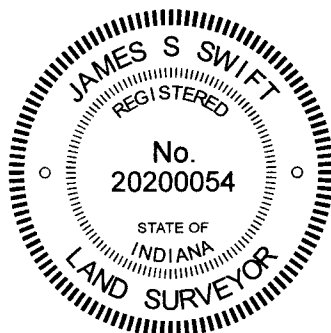
- A - Boone County witness mark, flush, 45.5 to corner 1, 27.2 to corner 2
- B - Mag nail set in S. side power pole, 2' a.g. 56.5 to corner 1, 55.2' to corner 2
- C - INDOT BM BOO C89A, flush in concrete headwall 135.2' to corner 1, 163.81' to corner 2
- D - Mag nail set in N.W. side, wood guard rail post, 2' a.g. 35.8' to corner 1, 44.6' to corner 2

- ① S.E. Corner, Section 34
S.W. Corner, Section 35
T 19 N, R 1 E
- ② N.W. Corner, Section 2
N.E. Corner, Section 3
T 18 N, R 1 E

Distance between monuments = 29.04'
Record closing distance = 44 links (29.04')

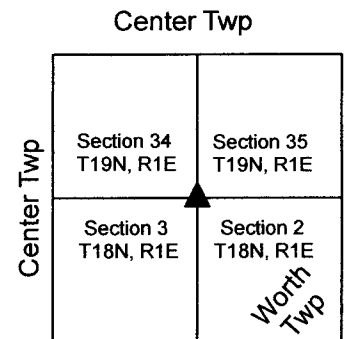


The INDOT Type B monuments were found and held as marking the respective corners.
A BCS record dated February, 1867 states, with respect to Corner 1, "Reestablished. Set Rock. 20.10.5-1/2." A BCS record of December 27, 1859 references Corner 2 with no call for what monument may have been present. A subsequent record of 1894 states "Both rocks gone."
A BCS tie card dated January 18, 1994 shows both corners but does not specify what monuments were held. A BCS tie card dated July 22, 2005 shows both corners as INDOT Type C monuments. The found monuments, being actually INDOT Type B, are the same monuments as shown on the 2005 tie card and appear to be in the same positions as the corners referenced on the 1994 tie cards. No excavation was performed at these corners as they fall in a state road. The found monuments agree with local evidence of the corners in the form of being at the intersections of the north-south county roads and east-west state roads. The monuments are separated by the same distance as is called in the original federal notes, 44 links or 29.04 feet. The two found monuments were held as marking the respective corners.



Kenneth E. Hedge
Kenneth E. Hedge, County Surveyor

James S. Swift
James S. Swift, IN LS 20200054
June 7, 2022



SECTION CORNER RECORD

NE 000-450

BOONE COUNTY SURVEYOR'S OFFICE

State Plane grid coordinates NAD83 (2011):

Corner 1: North: 1745843.30 East: 3148438.59 (U.S. survey feet)

Corner 2: North: 1745842.11 East: 3148374.56 (U.S. survey feet)

Corner 1 monument: Iron pin (rebar) in concrete

Corner 2 monument: Mag nail

Depth: Flush with adjacent road surface

Indiana tie card references:

IN02_T18NR1E02_04

IN02_T19NR1E35_76

① S. 1/4 corner, Section 35
T 19 N, R 1 E
Iron pin in concrete

② N. 1/4 corner, Section 2
T 18 N, R 1 E
Mag Nail

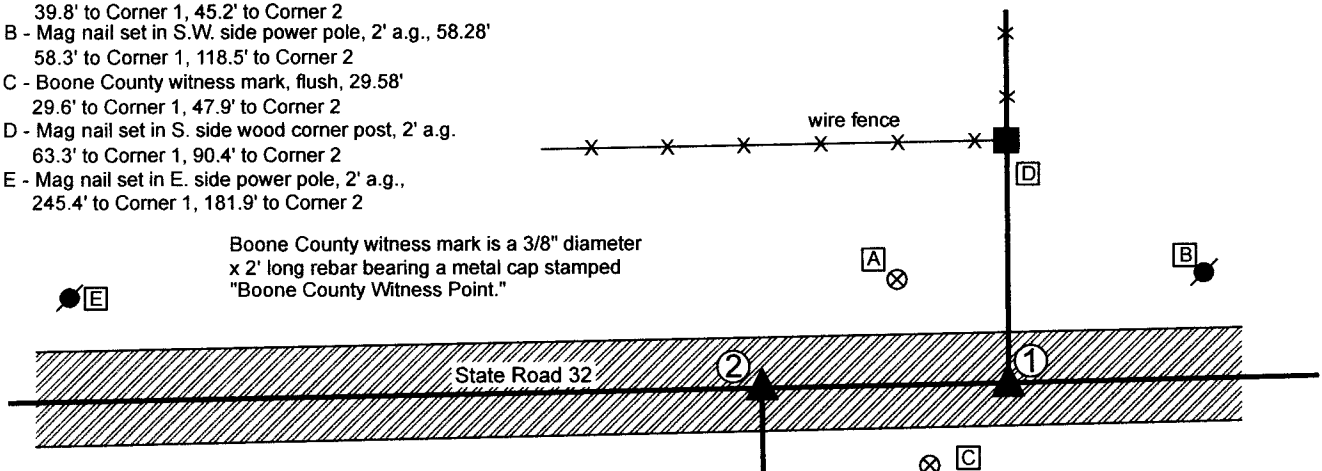
Distance between monuments: 64.06'

CORNER WITNESS DETAIL

SCALE 1" = 50'
0' 25' 50'

- A - Boone County witness mark, flush, 39.8' to Corner 1, 45.2' to Corner 2
- B - Mag nail set in S.W. side power pole, 2' a.g., 58.28' 58.3' to Corner 1, 118.5' to Corner 2
- C - Boone County witness mark, flush, 29.58' 29.6' to Corner 1, 47.9' to Corner 2
- D - Mag nail set in S. side wood corner post, 2' a.g. 63.3' to Corner 1, 90.4' to Corner 2
- E - Mag nail set in E. side power pole, 2' a.g., 245.4' to Corner 1, 181.9' to Corner 2

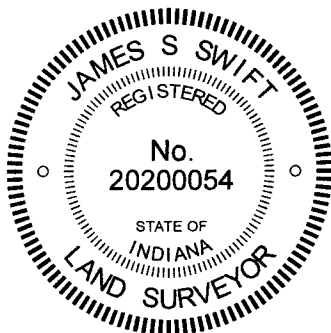
Boone County witness mark is a 3/8" diameter x 2' long rebar bearing a metal cap stamped "Boone County Witness Point."



The iron pin in concrete marking Corner 1 and the Mag Nail at Corner 2 were found in place and held as marking the respective corners. Corner 1 was originally established as a wood post in 1819. Corner 2 is not an original federal corner. A BCS record dated July 22, 1872 states, with respect to Corner 2 "Established 95 lks West F Sect. 35. Set Rocks One 5-1/2, 3, 2-1/2 +. Top One 9.7.4-1/2 +". Another BCS record, pertaining to Corner 1 but with no specific date noted, states "Re-Est 95 lks East of B. Section 2. Found point from which Rock marked W North 20 feet..."

A BCS tie card dated January 18, 1994 shows Corner 1 as a railroad spike. A BCS tie card November 2, 2005 shows Corner 1 as an iron pin in concrete and Corner 2 as a "Mag Nail with Washer" 64.10 feet West of Corner 1. It is noted that this tie card was produced under contract with the former Lebanon survey firm Anderson & Associates. It is also noted that a survey by the same firm recorded as Instrument 0217195, dated November 26, 2002, shows Corner 2 at a position 'Calc. from Prev. Surveys' 57.39 feet west of a 'Rebar in Conc.' at Corner 1, which is 6.71 feet east of the position held for Corner 2 the 2005 tie card. A Location Control Route Survey recorded as Instrument 0201777 shows Corner 1 as 'Iron Pin per County Surveyor ties' with no specific reference to Corner 2.

No excavation was performed at these corners, as they fall in a state road. The found iron pin in concrete is held as being the same monument shown on the 2005 tie card, the 2002 Anderson & Associates survey and also the 2002 Route Survey. Up to seven feet of uncertainty in the east-west dimension is associated with the position of Corner 2, given the variations in calls to that corner on the Anderson & Associates survey and tie card produced by the same company. It is noted that the average of the federal closing distances reported for the northeast and northwest corners of Section 2 is 97 links, or 64.02 feet. The distance between the found monuments is 64.06 feet. It is not known why the BCS surveys of the 1800s held 95 links as the separation between the corners. Given that no solid evidence was found from those surveys and that it is not known whether the found monuments match those records, the found iron pin and nail were held as marking the corners, per the 2005 BCS tie card.



Kenneth E. Hedge
Kenneth E. Hedge, County Surveyor

James S. Swift
James S. Swift, IN LS 20200054

October 4, 2022

Center Twp

Section 35
T19N, R1E

Worth Twp

Section 2
T18N, R1E

SECTION CORNER RECORD

NE 000-500

BOONE COUNTY SURVEYOR'S OFFICE

State Plane grid coordinates NAD83 (2011):

Corner 1: North: 1745897.19 East: 3150997.76 (U.S. survey feet)

Corner 2: North: 1745898.78 East: 3151096.68 (U.S. survey feet)

Type of monument: Iron pins in concrete

Depth: Flush with adjacent road surface

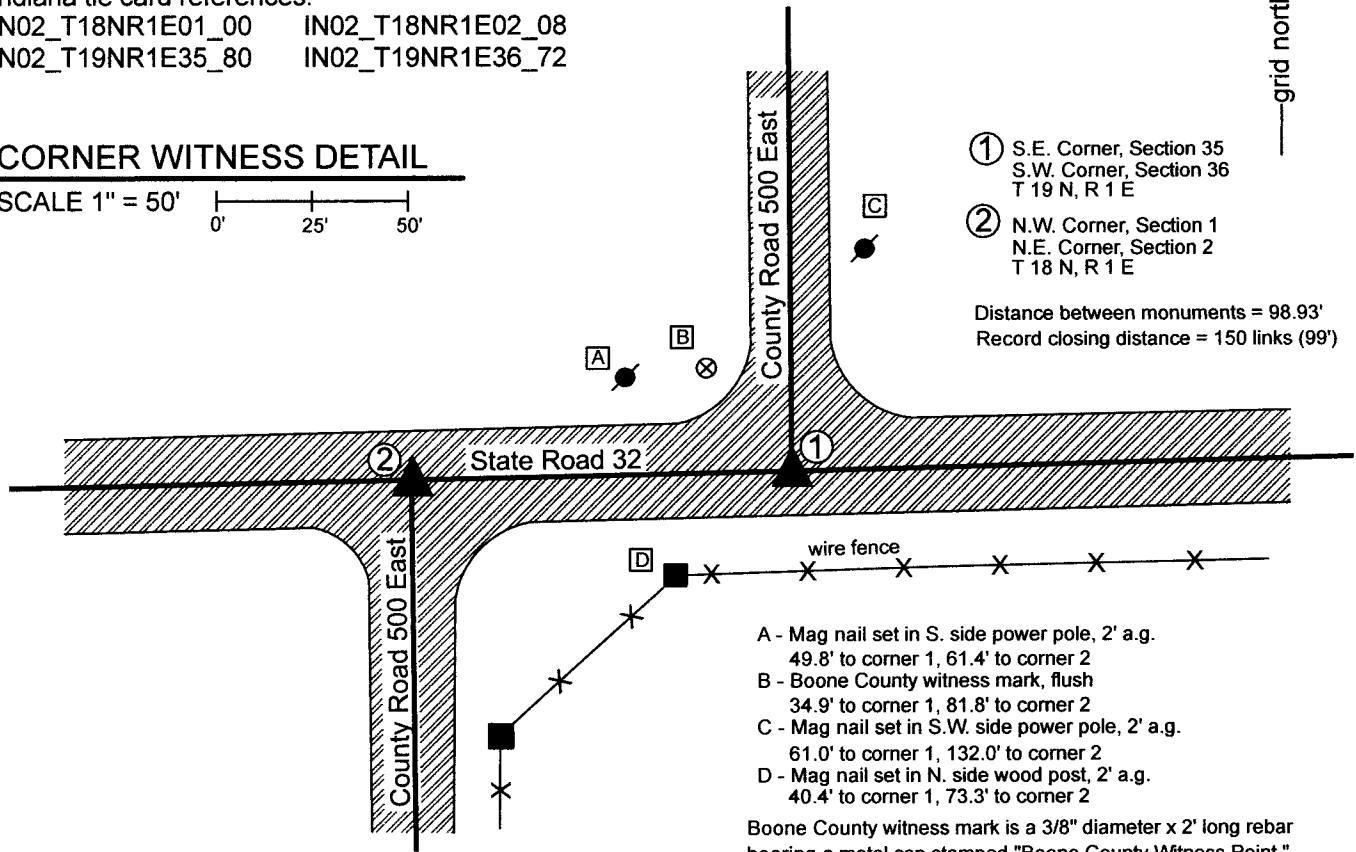
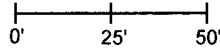
Indiana tie card references:

IN02_T18NR1E01_00 IN02_T18NR1E02_08

IN02_T19NR1E35_80 IN02_T19NR1E36_72

CORNER WITNESS DETAIL

SCALE 1" = 50'



- ① S.E. Corner, Section 35
S.W. Corner, Section 36
T 19 N, R 1 E
- ② N.W. Corner, Section 1
N.E. Corner, Section 2
T 18 N, R 1 E

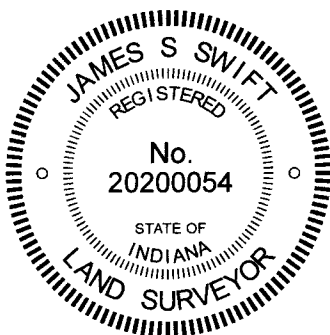
Distance between monuments = 98.93'
Record closing distance = 150 links (99')

- A - Mag nail set in S. side power pole, 2' a.g.
49.8' to corner 1, 61.4' to corner 2
- B - Boone County witness mark, flush
34.9' to corner 1, 81.8' to corner 2
- C - Mag nail set in S.W. side power pole, 2' a.g.
61.0' to corner 1, 132.0' to corner 2
- D - Mag nail set in N. side wood post, 2' a.g.
40.4' to corner 1, 73.3' to corner 2

Boone County witness mark is a 3/8" diameter x 2' long rebar bearing a metal cap stamped "Boone County Witness Point."

The iron pins in concrete were found in place and held as marking the respective corners.

A BCS record dated August 6, 1850 references Corner 2 but does not state information about what monument was set. No other specific descriptions of either of the corners was found in the BCS Surveyor's Record beyond the original establishment of Corner 1 as a wood post in 1819 and Corner 2 as a wood post in 1820. A BCS tie card dated January 18, 1994 shows both corners as being railroad spikes. The positions of the railroad spikes appear to be in the same positions as the found iron pins. A subsequent BCS tie card dated August 4, 2005 shows both corners as iron pins in concrete, which are believed to be the same monuments as found in the field. INDOT could not confirm when the current monuments were set. The positions of the iron pins agree with the local evidence of the corners, being at the intersections of the north-south county roads and the east-west state road and are known to have been held as marking the corners for private surveys in the vicinity. They are also separated by almost precisely the original federal closing distance of 150 links. No substantial excavation was performed at these corners as they fall in state roads. The found iron pins were held as marking the respective corners. It is noted that Corner 2 falls approximately 0.5 foot north of a straight line connecting Corner 1 and the standard corner to the west (See BCS Corner NE 000-450).



Kenneth E. Hedge
Kenneth E. Hedge, County Surveyor

James S. Swift
James S. Swift, IN LS 20200054
June 7, 2022

Center
Township

Section 35 T19N, R1E	Section 36 T19N, R1E
-------------------------	-------------------------

Worth
Township

Section 2 T18N, R1E	Section 1 T18N, R1E
------------------------	------------------------

SECTION CORNER RECORD

NE 050-400

BOONE COUNTY SURVEYOR'S OFFICE

State Plane grid coordinates NAD83 (2011):

North: 1748431.03 East:3145768.58 (U.S. survey feet)

Type of monument: Harrison, 4" disk 'Section Corner'

Depth: Three inches below adjacent gravel road surface

Indiana tie card references:

IN02_T19NR1E34_44 IN02_T19NR1E35_36

A - Mag nail set in N.W. edge power pole, 2' a.g., 23.8'
B - Mag nail set in E. edge power pole, 2' a.g., 40.6'
C - Mag nail set in S. edge wood post, 1; a.g., 38.3'

CORNER WITNESS DETAIL

SCALE 1" = 40'
0' 20' 40'

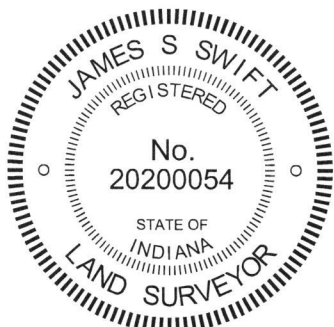
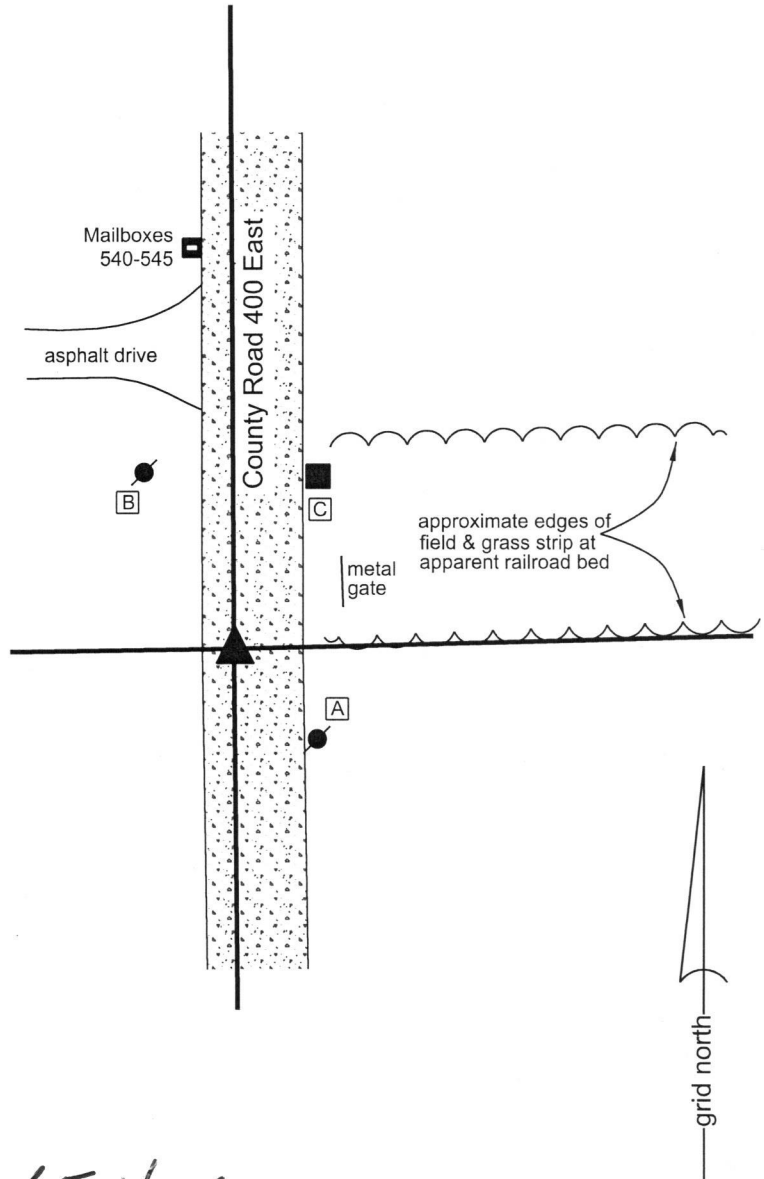
The Harrison monument was set in place of a Harrison monument found.

A BCS record of February, 1871 states, with respect to this corner, "Reestablished from stump of sugar, set rock 16.12.8 +." A BCS tie card dated July 28, 2005 shows the corner as a Harrison monument with no reference to source. A survey dated November 21, 1996 by Jerry L. Carter, LS #S0350 and recorded April 30, 2008 as Instrument 200800004538 in the Office of the Boone County Recorder shows the corner as a rebar found. The position of the rebar shown on the Carter survey precisely matches the position of the found Harrison monument with respect to other monuments and corners shown on the survey.

This corner was excavated on April 6, 2018. Prior to excavation, the Harrison monument shown on the 2005 tie card was found in good condition. Excavation of an area extending 6 feet north, 2 feet south, 1.5 feet west and 4 feet east of the found monument revealed no further evidence of the corner. Several rocks of dimensions up to 7x7x7 inches were found at the bottom of the road bed. All of these stones are considered to be base material for the road and were not held as evidence of the corner. This corner falls within or near the right-of-way of the old Midland Railroad. Remains of old railroad ties were found at the north edge of the area of excavation. Due to the disturbance to the road bed associated with the installation of the railroad, it is considered highly unlikely that the stone described in the 1871 record would yet be present if it had been any further north than the area which was excavated.

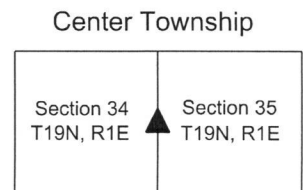
The position of the found Harrison monument was held as marking the corner and the monument was replaced with a new, identical monument in the same position.

This corner was originally established as a wood post in 1821.



Kenneth E. Hedge
Kenneth E. Hedge, County Surveyor

James S. Swift
James S. Swift, IN LS 20200054
May 30, 2018



SECTION CORNER RECORD

NE 100-400

BOONE COUNTY SURVEYOR'S OFFICE

State Plane grid coordinates NAD83 (CORS96):

North: 1751081.15 East: 3145754.89 (U.S. survey feet)

Type of monument: Harrison, 4" disk 'Section Corner'

Depth: One inch below adjacent road surface

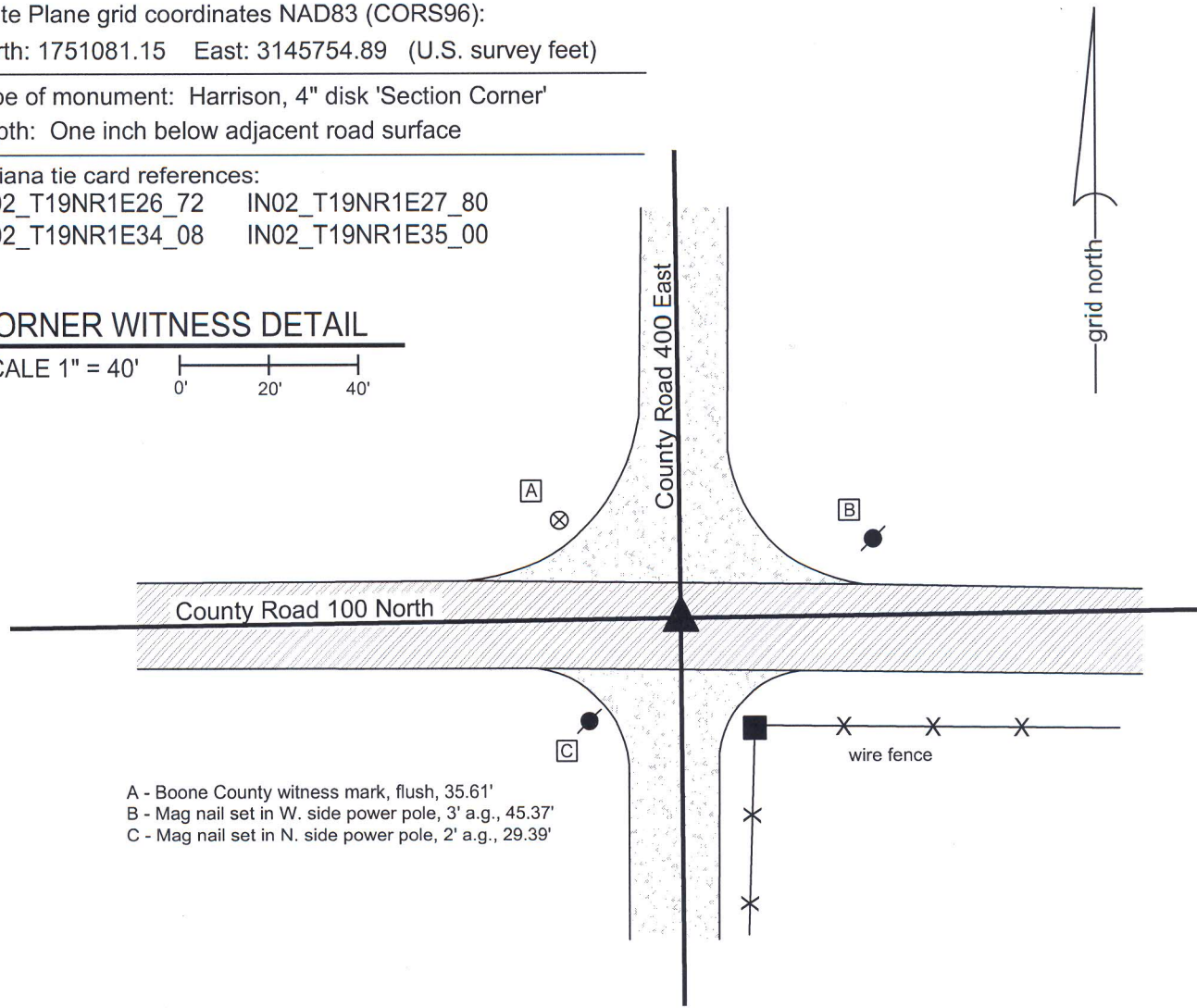
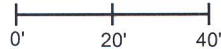
Indiana tie card references:

IN02_T19NR1E26_72 IN02_T19NR1E27_80

IN02_T19NR1E34_08 IN02_T19NR1E35_00

CORNER WITNESS DETAIL

SCALE 1" = 40'



- A - Boone County witness mark, flush, 35.61'
- B - Mag nail set in W. side power pole, 3' a.g., 45.37'
- C - Mag nail set in N. side power pole, 2' a.g., 29.39'

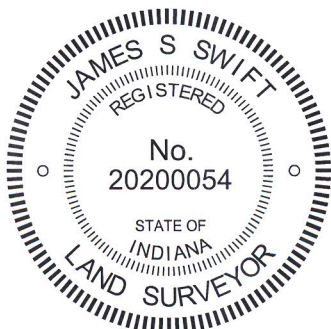
The harrison monument was set in place of a railroad rail found.

A BCS record of February, 1871 states "Reestablished from stump of Sugar and stake. Set Rock 13.6.5-1/2 +. A brick bat marked + under it." A BCS tie card dated June, 1968 shows the corner, but does not state any information about a monument. However, the field notes associated with that tie card state "stone found." A BCS tie card dated July, 28, 2005 shows the corner as a harrison monument with no documentation of source.

This corner was excavated on September 30, 2011. Prior to excavation a harrison monument was found at the surface. Excavation revealed a railroad rail found at 8 inches below grade, generally below the harrison, but approximately 0.1' N and 0.1' E of the position of the center of the harrison. No further evidence was found. It is known that it was a common practice for BCS crews in the late 1960s to remove a stone, when found, and replace it with a railroad rail. The documentation for such events typically states "stone found" with no mention of the removal of the stone or placement of the rail. It appears that the same procedure was followed for this corner.

The railroad rail and harrison were both removed during excavation. A new harrison monument was set in place of the railroad rail.

This corner was originally established as a wood post in June, 1822.



Kenneth E. Hedge
 Kenneth E. Hedge, County Surveyor

James S. Swift
 James S. Swift, IN LS 20200054
 January 15, 2013

Center Township

Section 27 T19N, R1E	Section 26 T19N, R1E
Section 34 T19N, R1E	Section 35 T19N, R1E

SECTION CORNER RECORD

NE 100-450

BOONE COUNTY SURVEYOR'S OFFICE

State Plane grid coordinates NAD83 (CORS 96):

North: 1751113.04 East: 3148401.04 (U.S. survey feet)

Type of monument: Harrison, 4" disk 'Section Corner'

Depth: One inch below adjacent road surface

Indiana tie card references:

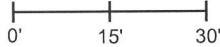
IN02_T19NR1E26_76

IN02_T19NR1E35_04



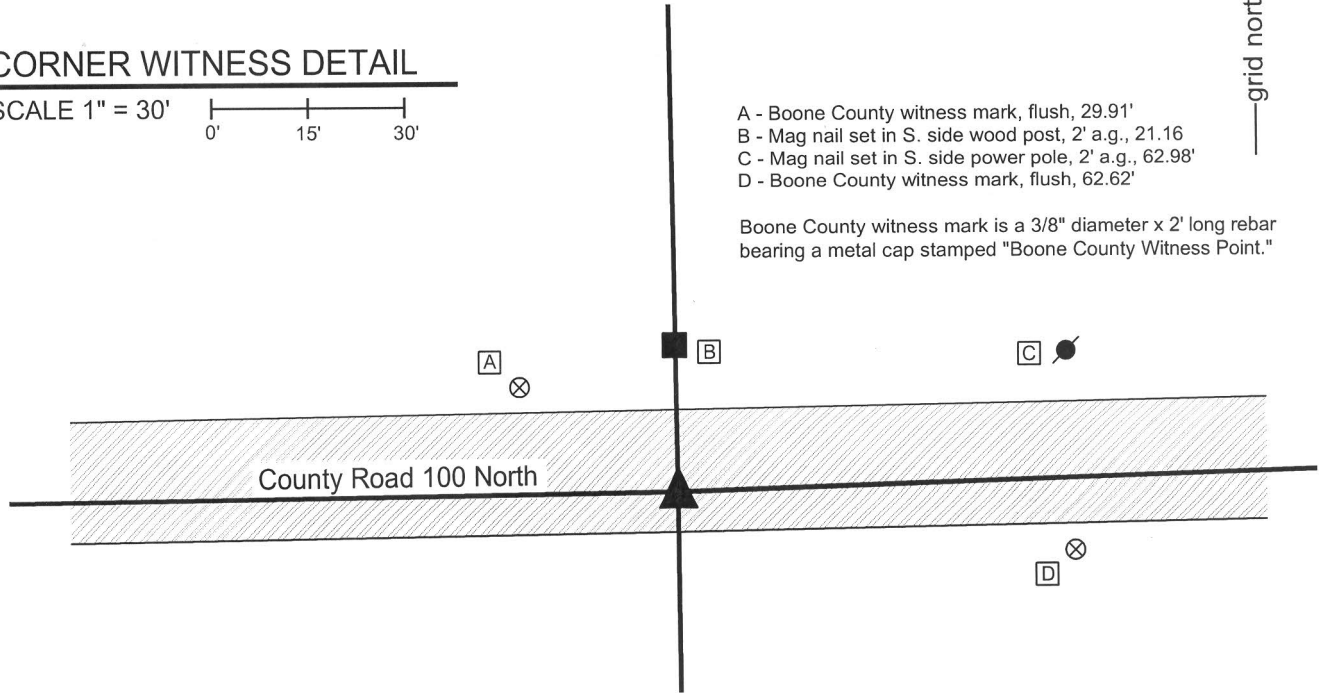
CORNER WITNESS DETAIL

SCALE 1" = 30'



- A - Boone County witness mark, flush, 29.91'
- B - Mag nail set in S. side wood post, 2' a.g., 21.16'
- C - Mag nail set in S. side power pole, 2' a.g., 62.98'
- D - Boone County witness mark, flush, 62.62'

Boone County witness mark is a 3/8" diameter x 2' long rebar bearing a metal cap stamped "Boone County Witness Point."

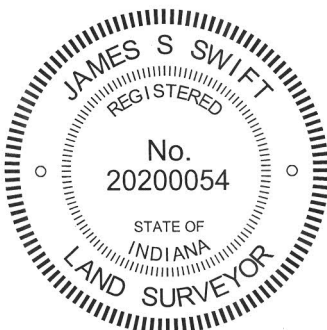


The harrison monument was set over a stone found.

A BCS record of September 17, 1867 states "Reestablished from the trees. Set a Rock 16.13 by 6-1/2 "+" on top." A BCS tie card dated July, 1968 states "no stone found." A BCS tie card dated August 2, 2005 shows the corner as a harrison monument with no documentation of source.

This corner was excavated on September 28, 2011. Prior to excavation a harrison monument was found in a hole in the asphalt 1 inch below grade. Excavation revealed a railroad rail found at 8 inches below grade, directly below the harrison monument. The 1968 tie card does not mention the rail, but it is most likely that the rail was set in association with the creation of that document. Further exacation revealed a stone found at 13 inches below grade, south and east of the rail. The stone is fully embedded in the clay layer below the road. With the top 9 inches of the stone exposed, it measures 13 inches E-W by 6 1/2 inches N-S. The stone is generally vertical, though leaning slightly to the south. An etched "+" is clearly visible on the top of the stone, on the sloping west side of the top. The full height of the stone was not measured, but with 9 inches exposed, it remained stable in the clay, indicating more depth. With the found mark and two matching dimensions, this was accepted as being the stone called for in the 1867 record. The top, high point of the stone was held as marking the corner. The stone is in line with the old end post at the north edge of the road. The stone is 3.1 feet south and 3.3 feet east of the position of the found harrison monument and railroad rail, both of which were removed during excavation. The stone was left in place and a new harrison monument was set directly over the top, high point of the stone, slightly east of the etched "+" on the top, sloping west side of the stone.

This corner was originally established as a wood post in June, 1822.

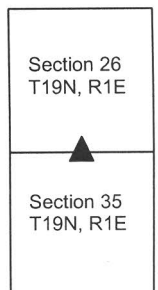


Kenneth E. Hedge
Kenneth E. Hedge, County Surveyor

James S. Swift
James S. Swift, IN LS 20200054

March 1, 2012, revised February 14, 2014

Center
Twp



PHOTOGRAPHIC DOCUMENTATION

Date of photography: September 28, 2011

View of the stone as first exposed.



View of the stone more fully exposed.



View of the stone as with dust washed off.



View from the south showing the found stone, and the old post on the north side of the road.



View showing the found stone and a shovel set temporarily in the position of the rail, as found.



For details and documentation, refer to related sheet "Section Corner Record."

SECTION CORNER RECORD

BOONE COUNTY SURVEYOR'S OFFICE

NE 100-500

State Plane grid coordinates NAD83 (NSRS 2007):

North: 1751187.06 East: 3151049.35 (U.S. survey feet)

Type of monument: Harrison, 4" disk 'Section Corner'

Depth: One inch below adjacent road surface

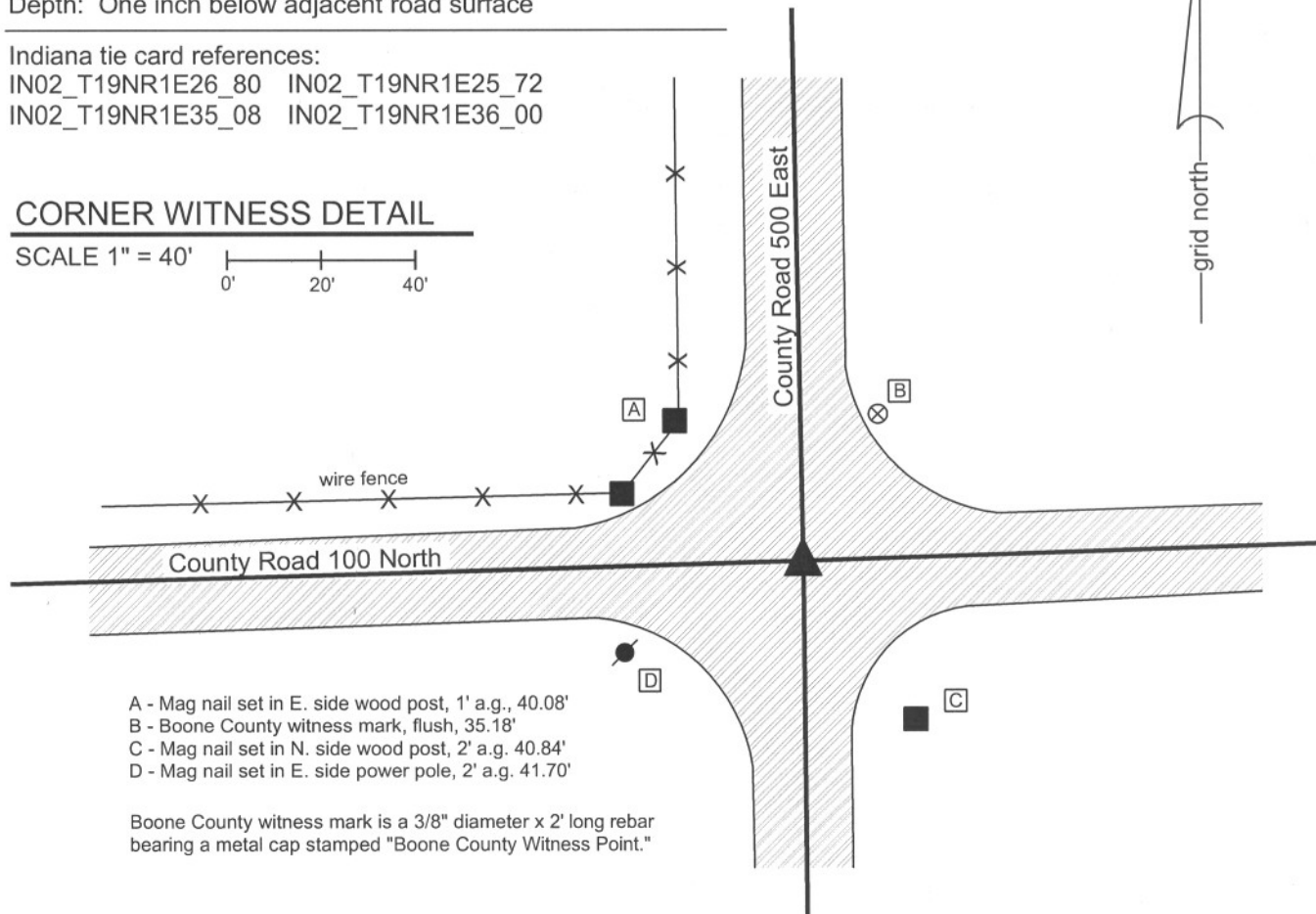
Indiana tie card references:

IN02_T19NR1E26_80 IN02_T19NR1E25_72

IN02_T19NR1E35_08 IN02_T19NR1E36_00

CORNER WITNESS DETAIL

SCALE 1" = 40'



- A - Mag nail set in E. side wood post, 1' a.g., 40.08'
- B - Boone County witness mark, flush, 35.18'
- C - Mag nail set in N. side wood post, 2' a.g. 40.84'
- D - Mag nail set in E. side power pole, 2' a.g. 41.70'

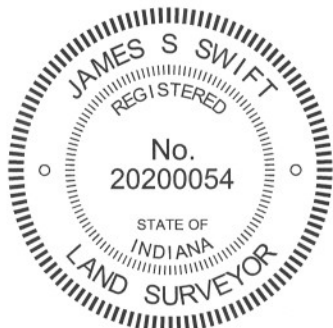
Boone County witness mark is a 3/8" diameter x 2' long rebar bearing a metal cap stamped "Boone County Witness Point."

The harrison monument was set in place of a vertical section of railroad rail found.

A BCS record of September 17, 1867 states "Reestablished drove a stake." A BCS record of August 4-5, 1868 shows the corner as the terminal point for measurements with no description of monumentation. A BCS tie card dated July, 1968 shows the corner but does not mention a monument. The field notes associated with this document state "no stone." A BCS tie card dated May 29, 1991 shows the corner as "angle iron fd. (rail)." A BCS tie card dated August 4, 2005 shows the corner as a harrison monument.

This corner was excavated on July 12, 2011. Prior to excavation a harrison monument was found at the surface. Excavation revealed a section of railroad rail on end found at 6 inches deep. The center of the rail was 0.3' south and 0.1' west of the harrison. No evidence was found directly below the harrison. Further excavation revealed a wood stake found at 10 inches deep, 2.1' west and 0.5' south of the rail. The stake was entirely in the fill material of the road and appears to be much newer than a wood stake from 1867. No other evidence was found in an area of excavation extending 2.5' East, 2.5' West, 4' South and 2' North of the original found harrison monument. Excavation was extended to the clay layer below the road, at 3 feet deep. The found railroad rail was held as the corner. It is most likely that the rail was established in association with the 1968 tie card. It is noted the lay of the surrounding ground indicates that this corner was likely low and occasionally wet during the wagon road era.

This corner was originally established as a wood stake in June, 1822.



Kenneth E. Hedge
 Kenneth E. Hedge, County Surveyor

James S. Swift
 James S. Swift, IN LS 20200054

March 1, 2012

Center Township

Section 26 T19N, R1E	Section 25 T19N, R1E
Section 35 T19N, R1E	Section 36 T19N, R1E