

SECTION CORNER RECORD

SW 500-800

BOONE COUNTY SURVEYOR'S OFFICE

State Plane grid coordinates NAD83 (2011):

North: 1718903.37 East: 3082689.90 (U.S. survey feet)

Type of monument: INDOT Type B Monument

Depth: Flush with adjacent road surface

Indiana tie card references:

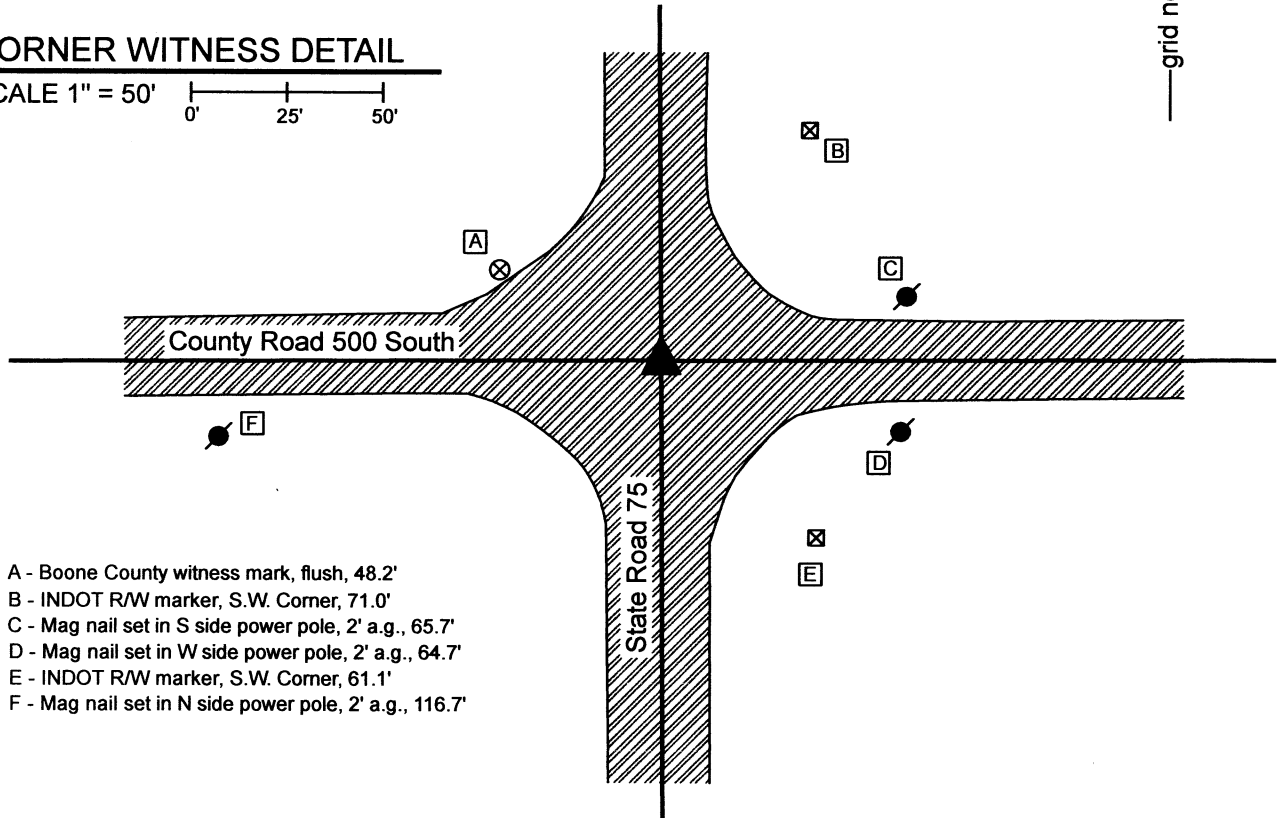
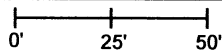
IN02_T18NR2W27_72 IN02_T18NR2W26_80

IN02_T18NR2W34_08 IN02_T18NR2W35_00



CORNER WITNESS DETAIL

SCALE 1" = 50'

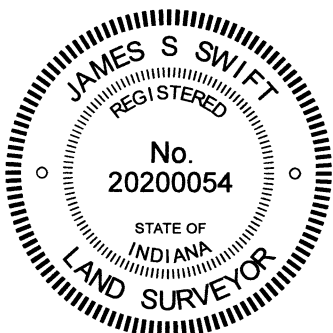


- A - Boone County witness mark, flush, 48.2'
- B - INDOT R/W marker, S.W. Corner, 71.0'
- C - Mag nail set in S side power pole, 2' a.g., 65.7'
- D - Mag nail set in W side power pole, 2' a.g., 64.7'
- E - INDOT R/W marker, S.W. Corner, 61.1'
- F - Mag nail set in N side power pole, 2' a.g., 116.7'

The INDOT Type B monument was found in place.

A BCS tie card dated December, 2003 shows the corner to be a PK nail. In 2004 or later, INDOT replaced the nail with a Type B monument in the same position. Though the origin of the position of the monument is not known, it fits with local evidence in the form of the intersection of the existing roadways. This corner was not excavated, being in a state highway. The Type B monument is held as marking the corner.

This corner was originally established as a wood post in 1820.



Carol Cunningham
Carol Cunningham, County Surveyor

James S. Swift
James S. Swift, IN LS 20200054

May 31, 2023

Jackson Township

Section 27 T18N, R2W	Section 26 T18N, R12W
Section 34 T18N, R2W	Section 35 T18N, R2W

SECTION CORNER RECORD

SW 550-700

BOONE COUNTY SURVEYOR'S OFFICE

State Plane grid coordinates NAD83 (2011):
North: 1716264.52 East: 3088005.88 (U.S. survey feet)

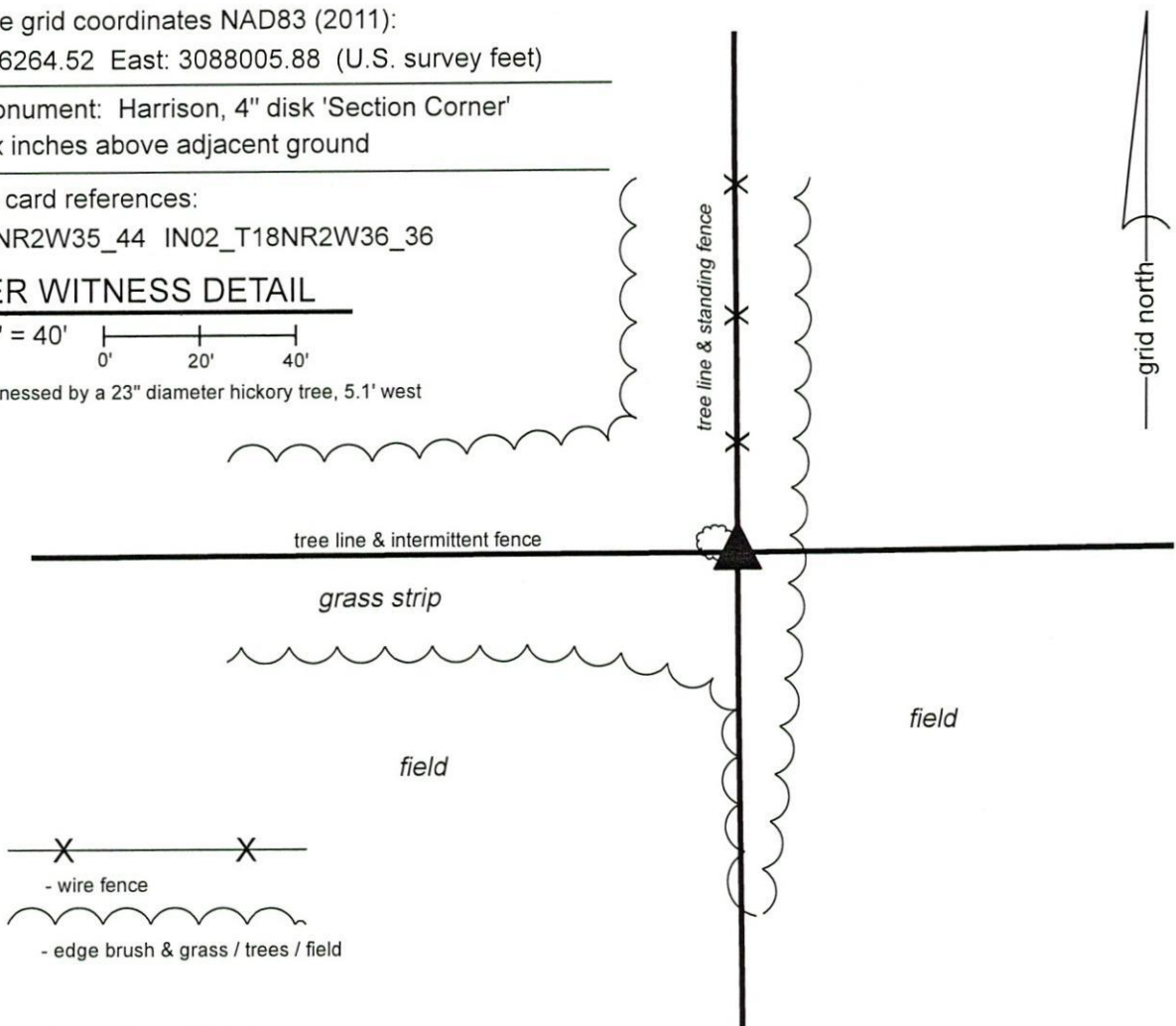
Type of monument: Harrison, 4" disk 'Section Corner'
Depth: Six inches above adjacent ground

Indiana tie card references:
IN02_T18NR2W35_44 IN02_T18NR2W36_36

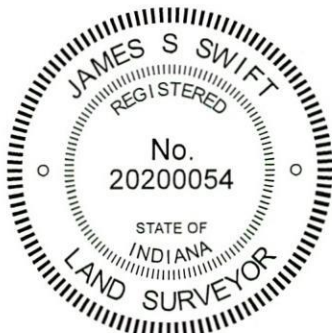
CORNER WITNESS DETAIL

SCALE 1" = 40'
0' 20' 40'

Corner is witnessed by a 23" diameter hickory tree, 5.1' west



The Harrison Monument was set in place of a wood corner post. A BCS record dated April 21, 1869 states, with respect to this corner, "Reest. from stumps of both trees. Set two rocks. One 14.12.6 marked +. Top one 16.14.11 marked +." No recent BCS tie cards or recorded surveys were found referencing this corner. Excavation was performed at this corner on October 28, 2019. Prior to excavation, a large pile of rocks was found at the evident intersection of fences to the north and west. The pile of rocks was removed and the corner post was found lying on the ground, amidst and below the rocks. Though lying on the ground and partially buried, the post still had the fencing to the north and west attached. After being freed from the pile of rocks, the post was stood up and the original position of the post was readily evident. Minimal evidence of the subterranean base of the post was found. It is noted that this post was not cedar and appeared to be of a material which would rot in the ground. The part of the post which had been sitting against the ground, in contact with the dirt below the rock pile, was much advanced in the state of being rotted. Excavation of the immediate vicinity of the post revealed more rocks found but none which specifically matched the description of those called in the 1869 record. Excavation also revealed fencing found buried in the ground to the north and east, indicating that the position of the post was successfully reconstructed and that the post was clearly a corner post, with evidence of fencing in three cardinal directions. The position of the corner post, as stood up in its evident original position at the intersection of the fences to the north and west, was held as the corner. A Harrison monument was set at this position. Many of the rocks which had been displaced during excavation were placed around the monument. No rebars or other similar survey monuments were found. This corner was originally established as a wood post in 1820.



Kenneth E. Hedge
Kenneth E. Hedge, County Surveyor

James S. Swift
James S. Swift, IN LS 20200054
January 15, 2020

Jackson Township

Section 35 T18N, R2W	Section 36 T18N, R2W
-------------------------	-------------------------

SECTION CORNER RECORD

BOONE COUNTY SURVEYOR'S OFFICE

SW 550-800

State Plane grid coordinates NAD83 (2011):
 North: 1713606.38 East: 3082729.46 (U.S. survey feet)

Type of monument: INDOT Type B Monument
 Depth: Flush with adjacent road surface

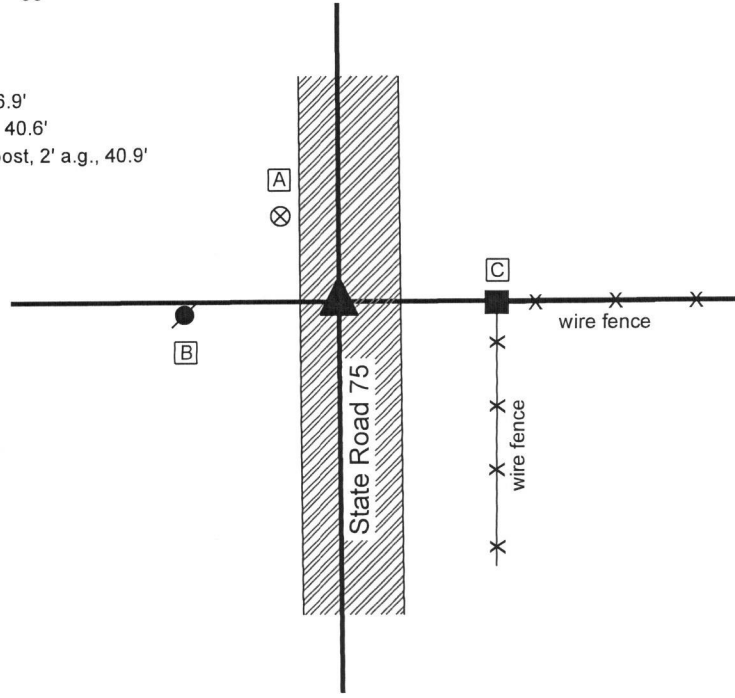
Indiana tie card references:
 IN02_T18NR2W34_44 IN02_T18NR2W35_36

CORNER WITNESS DETAIL

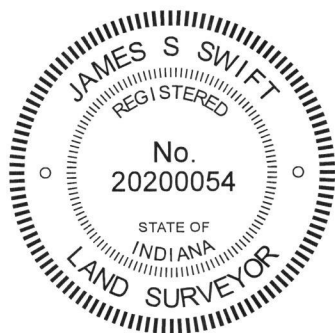
SCALE 1" = 50'



- A - Boone County witness mark, flush, 26.9'
- B - East edge, base of metal power pole, 40.6'
- C - Mag Nail set in N. side wood corner post, 2' a.g., 40.9'



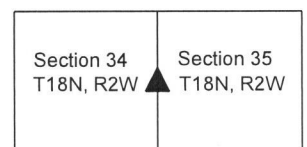
The INDOT Type B monument was found in place.
 A BCS tie card dated December, 2003 shows the corner to be a PK nail/washer. In 2004 or later, INDOT replaced the nail with a Type B monument in the same position. Though the origin of the position of the monument is not known, it fits with local evidence in the the form the the north-south roadway and being in line with the fence to the east. This corner was not excavated, being in a state highway. The Type B monument is held as marking the corner.
 This corner was originally established as a wood post in 1820.



Kenneth E. Hedge
 Kenneth E. Hedge, County Surveyor

James S. Swift
 James S. Swift, IN LS 20200054
 March 13, 2019

Jackson Township



SECTION CORNER RECORD

SW 600-700

BOONE COUNTY SURVEYOR'S OFFICE

State Plane grid coordinates NAD83 (2011):
 North: 1713621.22 East: 3088047.32 (U.S. survey feet)
 North: 1713621.05 East: 3088004.40 (U.S. survey feet)

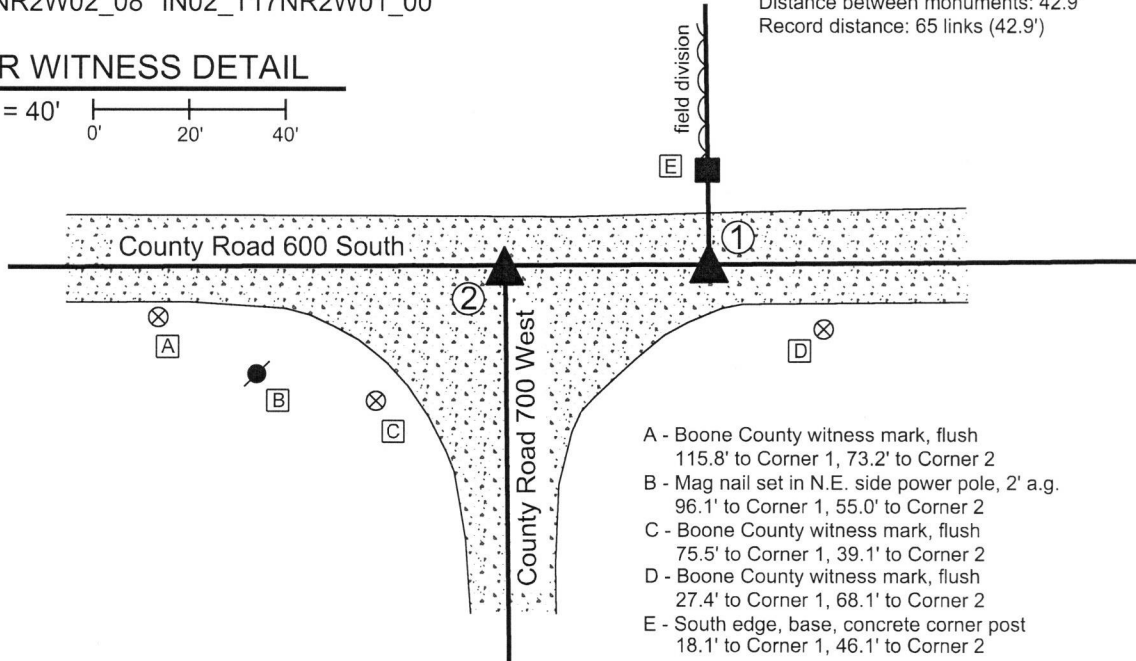
Type of monument: Harrison, 4" disk 'Section Corner'
 Depth: Six inches below adjacent gravel road surface

Indiana tie card references:
 IN02_T18NR2W35_80 IN02_T18NR2W36_72
 IN02_T17NR2W02_08 IN02_T17NR2W01_00

- ① S.E. Corner, Section 35
 S.W. Corner, Section 36
 T 18 N, R 2 W
 - ② N.W. Corner, Section 1
 N.E. Corner, Section 2
 T 17 N, R 2 W
- Distance between monuments: 42.9'
 Record distance: 65 links (42.9')

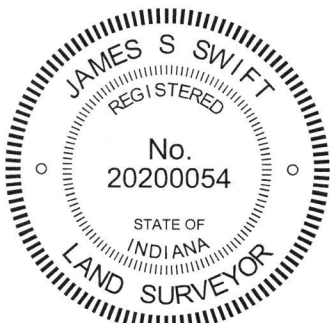
CORNER WITNESS DETAIL

SCALE 1" = 40'



- A - Boone County witness mark, flush
 115.8' to Corner 1, 73.2' to Corner 2
- B - Mag nail set in N.E. side power pole, 2' a.g.
 96.1' to Corner 1, 55.0' to Corner 2
- C - Boone County witness mark, flush
 75.5' to Corner 1, 39.1' to Corner 2
- D - Boone County witness mark, flush
 27.4' to Corner 1, 68.1' to Corner 2
- E - South edge, base, concrete corner post
 18.1' to Corner 1, 46.1' to Corner 2

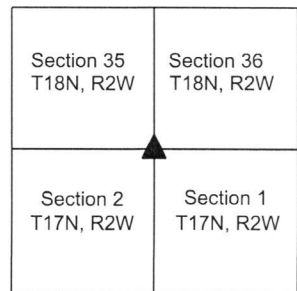
The Harrison monuments at both corners were set over stones found.
 A BCS record dated November 20-21, 1871 states, with respect to Corner 1, "Reest. from trees (one a stp). Set two rocks. One 18.14.11 +. Top one 20.16.11 +." A BCS record dated May 22, 1896 states, with respect to Corner 2, "Set Rock 8x10x12 +. Estab. 65 links W. of Cors to 35-36."
 A BCS tie card referencing Corner 2, dated April 17, 1972 states, "No stone - RRR put in."
 These corners were excavated on September 10, 2018. Prior to excavation, a rebar was found at 2 inches deep in the gravel road, situated against the north edge of a vertical section of railroad rail, the top of which was at 4 inches deep. These monuments appeared to be marking Corner 2. No metal monuments were found near Corner 1 prior to excavation. Excavation at Corner 1 revealed a stone found at 16 inches deep. The stone had a distinct etched + mark on the top and measured 20 inches N-S by 16 inches E-W with the top 8 inches exposed. The full height of 11 inches was measured on the west edge. Probing indicated that another stone is situated below the top stone. These stones were accepted as being the same monuments described in the 1871 record and were held as marking Corner 1. A Harrison monument was set directly over the etched + mark on the top stone. Excavation at Corner 2 revealed a stone found at 18 inches deep. This stone also had a distinct + mark on top. The stone measured one inch short of the 1896 record dimensions in all directions, being 9 inches N-S by 7 inches E-W by 11 inches tall. This stone was accepted as being the same monument described in the 1896 record. The specific position of Corner 2 was established on the township line as defined by Corner 1 and the standard corner one half mile west (see Corner SW 600-750), over the north edge of the stone, 0.4 foot north of the + mark). The railroad rail, removed during excavation, had been 1.4 feet south and 1.4 feet west of the final monumented position for Corner 2.
 The distance between the two stones is 42.9 feet or 65 links, matching the original federal closing distance and the offset reported in the 1895 record. Corner 1 was originally established as a wood post in 1819. Corner 2 was originally established as a wood post in 1820.



Kenneth E. Hedge
 Kenneth E. Hedge, County Surveyor

James S. Swift
 James S. Swift, IN LS 20200054
 September 19, 2018

Jackson Township



SECTION CORNER RECORD

SW 600-750

BOONE COUNTY SURVEYOR'S OFFICE

State Plane grid coordinates NAD83 (2011):

Corner 1: North: 1713610.00 East: 3085381.56 (U.S. survey feet)

Corner 2: North: 1713609.96 East: 3085352.55 (U.S. survey feet)

Type of monument: Harrison, 4" disk 'Section Corner'

Depth: Six inches below adjacent road surface

Indiana tie card references:

IN02_T18NR2W35_76 IN02_T17NR2W02_04



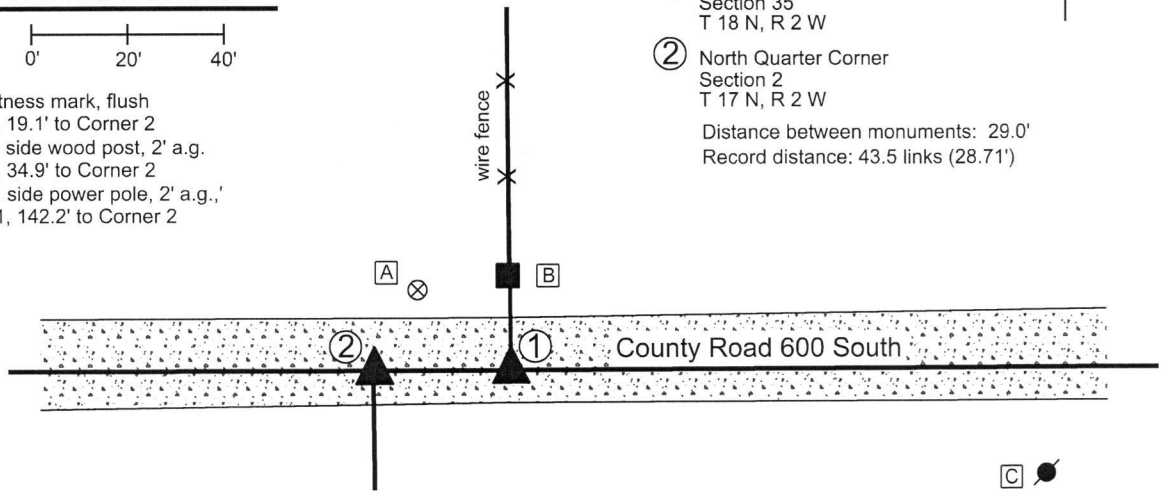
CORNER WITNESS DETAIL

SCALE 1" = 40'



- A - Boone County witness mark, flush
25.9' to Corner 1, 19.1' to Corner 2
- B - Mag nail set in S. side wood post, 2' a.g.
20.4' to Corner 1, 34.9' to Corner 2
- C - Mag nail set in N. side power pole, 2' a.g.,
113.7' to Corner 1, 142.2' to Corner 2

- ① South Quarter Corner
Section 35
T 18 N, R 2 W
 - ② North Quarter Corner
Section 2
T 17 N, R 2 W
- Distance between monuments: 29.0'
Record distance: 43.5 links (28.71')



The Harrison monuments at both corners were set over stones found.

A BCS record dated July 20, 1865 states, with respect to Corner 2, "Reestablished from stump of Oak bearing tree. Found blaze and notch. Set a Rock 24,22,11 marked +." A BCS record dated November 21, 1871 states, with respect to Corner 1, "Reest. 43 1/2 links E. of B sec. 2. Set two rocks. One 7.5 1/2.4. Top one 19.17.16 +." An undated tie sheet found in the Boone County Surveyor's Office, evidently supplied by a private company, shows Corner 1 as an I.P. set 21 feet south of the post on the north side of the road with the statement "No stone. Set I.P. See Job #8000104."

Corner 1 was excavated on September 10, 2018. Prior to excavation, a section of 5/8 inch rebar with a yellow plastic cap, markings illegible, was found badly disturbed, ostensibly marking Corner 1. Excavation revealed the stone described in the 1871 record at 12 inches deep. The stone has a flat top with a distinct etched "+" mark on the top. The height of the stone was found to be 17 inches along the west edge. The stone measured 16 inches N-S with the top 12 inches exposed. The E-W dimension was 13 inches E-W with 12 inches exposed, though was clearly larger in the E-W dimension toward the bottom of the rock. The stone was accepted as being the same monument described in the 1871 record and was held as marking Corner 1. A Harrison monument was set directly over the etched "+" mark on the top of the stone. Probing did not reveal the presence of the lower stone, but this is believed to be due to the substantially smaller size of the lower stone. The rebar, removed during excavation, had been 0.5 foot south and 0.5 foot west of the mark on the stone.

Corner 2 was excavated on September 12, 2018. No metal monuments were found marking this corner prior to excavation. Excavation at a point 43 1/2 links west of Corner 1 revealed a stone found at 11 inches deep. The stone was embedded in the clay layer below the road and had a distinct etched + mark on the top, sloping side of the stone. With the top 9 inches of the stone exposed, it measured 9 inches N-S by 13 inches E-W and was clearly much larger yet further down. The specific position of Corner 2 was established on the township line as defined by Corner 1 and the standard corner one-half mile west (see Corner SW 600-800), in-line with the etched mark on the stone. This point fell over the body of the stone, 0.3 foot north of the high point of the rock. The distance between the corners as defined by the etched marks on each stone is 0.3 foot longer than the 43 1/2 link separation reported in the 1871 record. It is noted that 43.5 links is the average of the original closing distances reported at the northeast and northwest corners of section 2. Corner 1 was originally established in 1819. Corner 2 is not an original federal corner.



Kenneth E. Hedge
Kenneth E. Hedge, County Surveyor

James S. Swift
James S. Swift, IN LS 20200054
September 19, 2018

Jackson
Township

Section 35
T18N, R2W

Section 2
T17N, R2W

SECTION CORNER RECORD

SW 600-800

BOONE COUNTY SURVEYOR'S OFFICE



State Plane grid coordinates NAD83 (2011):

North: 1713606.38 East: 3082729.46 (U.S. survey feet)

North: 1713605.98 East: 3082716.46 (U.S. survey feet)

Type of monument: INDOT Type B Monument

Depth: Flush with adjacent road surface

Indiana tie card references:

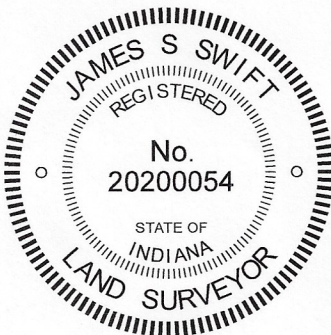
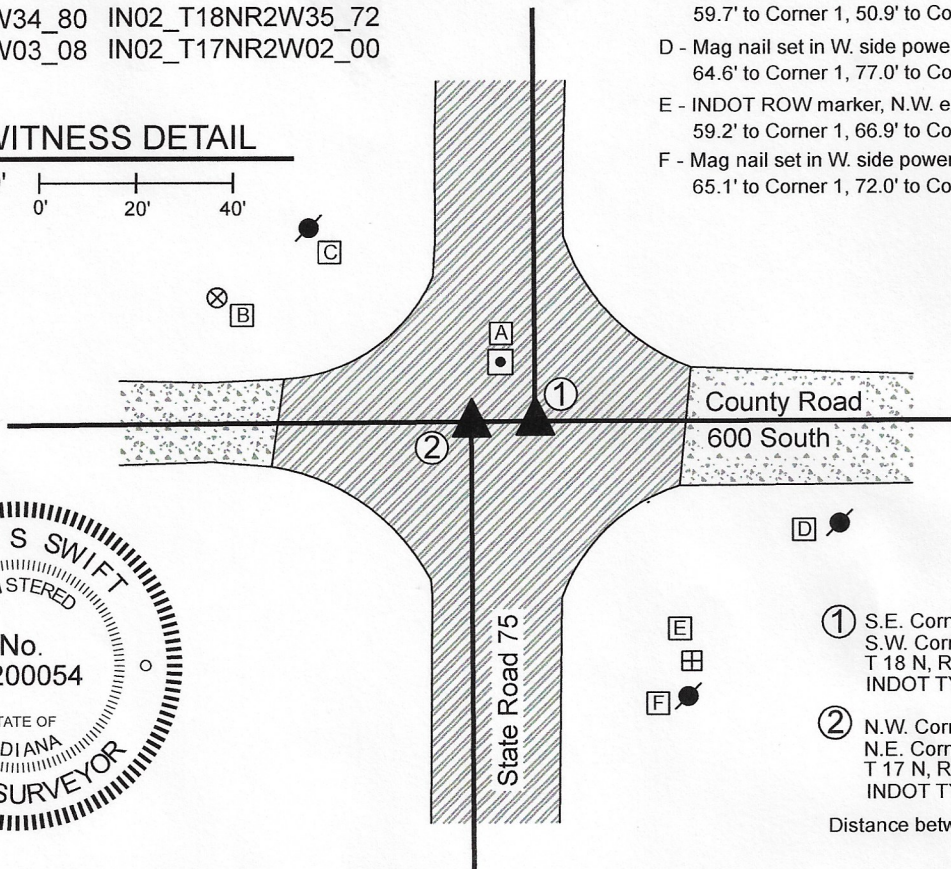
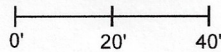
IN02_T18NR2W34_80 IN02_T18NR2W35_72

IN02_T17NR2W03_08 IN02_T17NR2W02_00

- A - INDOT Type B monument, flush
14.3 to Corner 1, 14.2' to Corner 2
- B - Boone County witness mark, flush,
70.6' to Corner 1, 58.8' to Corner 2
- C - Mag nail set in S.E. side power pole, 2' a.g.
59.7' to Corner 1, 50.9' to Corner 2
- D - Mag nail set in W. side power pole, 2' a.g.
64.6' to Corner 1, 77.0' to Corner 2
- E - INDOT ROW marker, N.W. edge
59.2' to Corner 1, 66.9' to Corner 2
- F - Mag nail set in W. side power pole, 2' a.g.
65.1' to Corner 1, 72.0' to Corner 2

CORNER WITNESS DETAIL

SCALE 1" = 40'

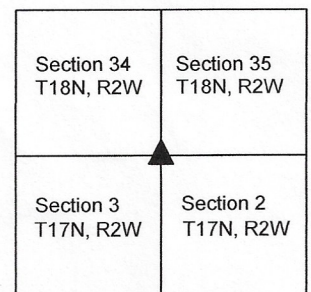


- ① S.E. Corner, Section 34
S.W. Corner, Section 35
T 18 N, R 2 W
INDOT TYPE B MONUMENT
- ② N.W. Corner, Section 2
N.E. Corner, Section 3
T 17 N, R 2 W
INDOT TYPE B MONUMENT

Distance between monuments: 13.0'

The INDOT Type B monuments were found in place and held as marking the respective corners. No specific descriptions of Corner 1 were found in the BCS Surveyor's Record beyond the original establishment of the corner as a wood post in 1819. The original federal notes for Corner 2 call for an offset of 22 links (14.52 feet) west. A BCS record on November 13-14, 1856 states, with respect to corner 2 and referencing a measured line from the south, "Intersected township line 14 links East of corner. Reestablished. Set Rock 12,14. No bearing trees." It is not clear from this record whether the corner was established at 14 links East, or whether it was established at the record offset of 22 links. A BCS tie card dated December, 2003 shows Corner 1 as a '1' bar bent north' and shows Corner 2 as a rebar, with a distance separation of 13.08 feet. The date when the Type B monuments were set is not known, but it is believed that they replaced the monuments shown on the 2003 tie card. The two monuments are 13.0 feet apart, very similar to the 2003 call. Uncertainties of approximately 1.5 feet may be attributed to the relative position of the monuments with respect to the federal offset of 22 links (14.52 feet) versus the measured offset of 13.0 feet. Both monuments fit well with local evidence, being in-line with the east-west roadway and being in-line with the prolongations of the respective portions of State Highway 75 to the north and south. No excavation was performed at these corners as they fall within a state highway. The Type B monuments were held as marking the respective corners. It is noted that Corner 2 falls approximately 0.2 foot south of a straight line connecting Corner 1 with the south quarter corner of section 34 (see BCS Corner SW 600-850). A third, similar monument was also found, as shown on the attached sketch. This monument does not represent a section corner and is shown for informational purposes only.

Jackson Township



Kenneth E. Hedge
Kenneth E. Hedge, County Surveyor

James S. Swift
James S. Swift, IN LS 20200054

July 21, 2020