

# SECTION CORNER RECORD

SW 500-100

## BOONE COUNTY SURVEYOR'S OFFICE

State Plane grid coordinates NAD83 (2011):

North: 1719043.73 East: 3119704.75 (U.S. survey feet)

Type of monument: Harrison, 4" disk 'Section Corner'

Depth: Six inches below adjacent gravel road surface

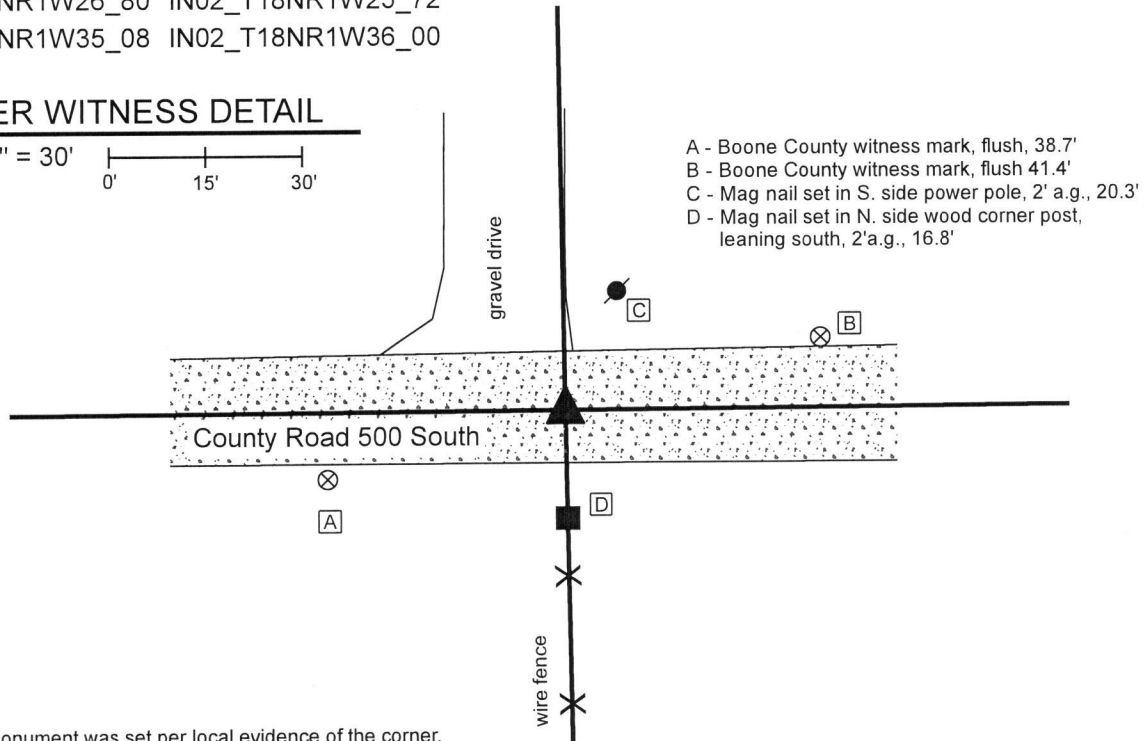
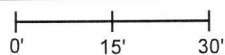
Indiana tie card references:

IN02\_T18NR1W26\_80 IN02\_T18NR1W25\_72

IN02\_T18NR1W35\_08 IN02\_T18NR1W36\_00

### CORNER WITNESS DETAIL

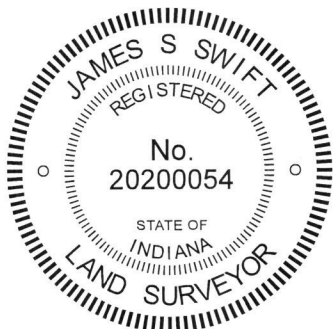
SCALE 1" = 30'



The Harrison monument was set per local evidence of the corner.

A BCS record dated September 8-12, 1837 (date noted in book as more likely to be 1857) states, with respect to this corner, "Reestablished. Set Rock 10x14." No recent BCS tie cards were found referencing this corner. A survey by Ronald E. Wharry, LS #S0420 recorded as Instrument 2017007960 in the Office of the Boone County Recorder shows the corner as being 18.00 feet north of a headpost on the south side of County Road 500 South but shows no monument set or found at the corner.

This corner was excavated on April 22, 2019. Prior to excavation, no metal or other artificial monuments were found marking the corner. The estimated position of the corner was established per the evidence of the physical roadway of County Road 500 South and an ancient fence bearing south from said County Road. The intersection point of the road and fence fits well with the relative positions of surrounding corners and evidence. Excavation was centered on a point 1 rod (16.5 feet) north of the ancient wood end post which marks the northerly terminus of said north-south fence. Excavation of an area extending 5 feet east, 5 feet west, 3.5 feet north and 3.5 feet south of the estimated position of the corner revealed no further evidence of the corner. The road bed consists of 4 inches of a bituminous material below which is 4 inches of modern #53 road stone, below which is another 4 inches of older gravel. The presence of the modern road stone indicates substantial grading / road improvement in the recent past. The descriptions for the adjacent properties are in the form of aliquot parts descriptions. Hence, the physical evidence of the roadway and fence were held as controlling for establishing the corner. It has been observed at numerous other corners throughout the county that the most reliable dimension for using accessory evidence such as an end post on the side of a road to discover ancient evidence of a corner is that of 1 rod or 16.5 feet. This dimension was held for purposes of establishing this corner. The corner was established at 1 rod north of the base of the post at the point where the post is flush with ground level and a Harrison monument was set at this position. This position fit very well with approximate center of the physical roadway. Up to 1.5 feet of uncertainty north-south is associated unmonumented position shown on the Wharry Survey. This corner was originally established as a wood post in 1820.



*Kenneth E. Hedge*  
Kenneth E. Hedge, County Surveyor

*James S. Swift*  
James S. Swift, IN LS 20200054  
May 22, 2019

Harrison Township

Section 26 T18N, R1W	Section 25 T18N, R1W
Section 35 T18N, R1W	Section 36 T18N, R1W

# SECTION CORNER RECORD

SW 500-150

## BOONE COUNTY SURVEYOR'S OFFICE

State Plane grid coordinates NAD83 (2011):

North: 1719028.56 East: 3117045.20 (U.S. survey feet)

Type of monument: Harrison, 4" disk 'Section Corner'

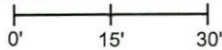
Depth: Six inches below adjacent road surface

Indiana tie card references:

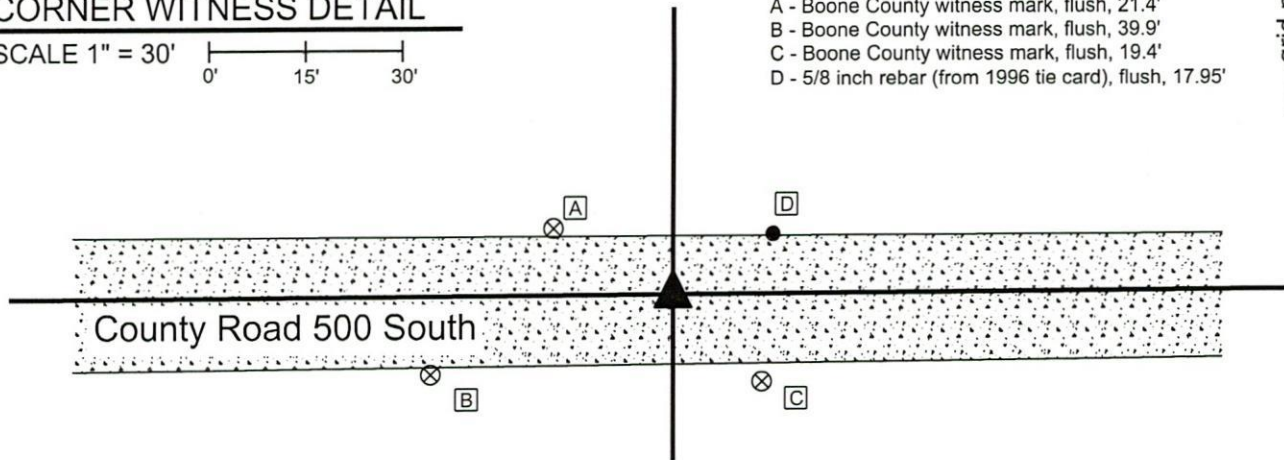
IN02\_T18NR1W26\_76 IN02\_T18NR1W35\_04

### CORNER WITNESS DETAIL

SCALE 1" = 30'



- A - Boone County witness mark, flush, 21.4'
- B - Boone County witness mark, flush, 39.9'
- C - Boone County witness mark, flush, 19.4'
- D - 5/8 inch rebar (from 1996 tie card), flush, 17.95'

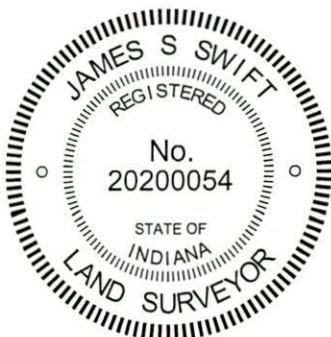


The Harrison monument was set per a BCS tie card dated March 18, 1996.

No specific descriptions of this corner were found in the BCS Surveyor's Record beyond the original establishment of the corner as a wood post in 1820. The corner is shown as being marked by a railroad spike on a BCS tie card dated March 18, 1996. The corner is shown as being marked by a railroad spike on a Location Control Route Survey recorded in Survey Book 15, page 53 in the Office of the Boone County Recorder.

This corner was excavated on April 22, 2019 and monumented on January 13, 2020. Prior to excavation, a railroad spike was found at the position of the corner as shown on the aforementioned survey (SB 15, p.53). No monument was found at the position of the corner as shown on the 1996 tie card but the 5/8 inch rebar shown on that tie card as being 17.95 feet northeast of the corner was found. A concrete pipe shown on that tie card as being under a field entrance southwest of the corner was not found, but substantial evidence of the old field entrance was found in the form of rocky material below the grass on the south side of the road. This evidence of the field entrance fit well with the found rebar and the relative positions of the ties as shown on the 1996 tie card. The expected position of the corner, per the found evidence from the 1996 tie card, was 14 feet east of the railroad spike shown on the Route Survey. Excavation of an area extending from 3 feet west of the found railroad spike to 3 feet east of the resected position from the 1996 tie card (20 feet total east-west) by 5 feet north south (centered on the railroad spike and center of road) revealed no further evidence of the corner. It is noted that the bottom of road bed was found at approximately three to four inches. Excavation was performed to at least 6 inches deep. On April 22, 2019, the road bed was repaired but no monument was set, pending further investigation.

It is noted that establishing the corner in the center of the road at 17.95 feet southwest of the found rebar, per the 1996 tie card, establishes a position which fits very well with the relative positions of the corners 1/2 mile west (see 2019 tie card for BCS SW 500-200) and 1/4 mile west (see 1996 tie card for BCS SW 500-175) and falls close to the midpoint of a straight line connecting the southeast and southwest corners of section 26 (see BCS corners SW 500-100 and SW 500-200). It is further noted that the Route Survey in SB 15, page 53 established the corner with respect to evidence 1/2 mile and 1/4 mile east, respectively. However, the report in that survey specifically states "Note: County references indicate an existing railroad spike at this corner however none was found. No sign of the county's references were found and in fact no objects suitable for references were observed within a reasonable distance." This finding was not supported by evidence found in the field, being the 5/8 inch rebar found on the north side of the road and rocky material indicating the location of the field division on the south side of the road. Given that the Route survey specifically calls for a lack of found evidence which was, in fact, present, and that the position of the corner as shown on the 1996 tie card fits well with BCS confirmed corners to the east and west, the position shown on the 1996 tie card was held. A Harrison monument was set at this position on January 13, 2020. The railroad spike shown as marking the corner on the survey in SB 15, page 53, removed during excavation, had been 14.0 feet west of this position.



*Kenneth E. Hedge*  
Kenneth E. Hedge, County Surveyor

*James S. Swift*  
James S. Swift, IN LS 20200054  
January 28, 2020

Harrison Township

Section 26  
T18N, R1W

Section 35  
T18N, R1W

# SECTION CORNER RECORD

SW 500-200

## BOONE COUNTY SURVEYOR'S OFFICE

State Plane grid coordinates NAD83 (2011):

North: 1719012.77 East: 3114389.63 (U.S. survey feet)

Type of monument: Harrison, 4" disk 'Section Corner'

Depth: Four inches above adjacent ground

Indiana tie card references:

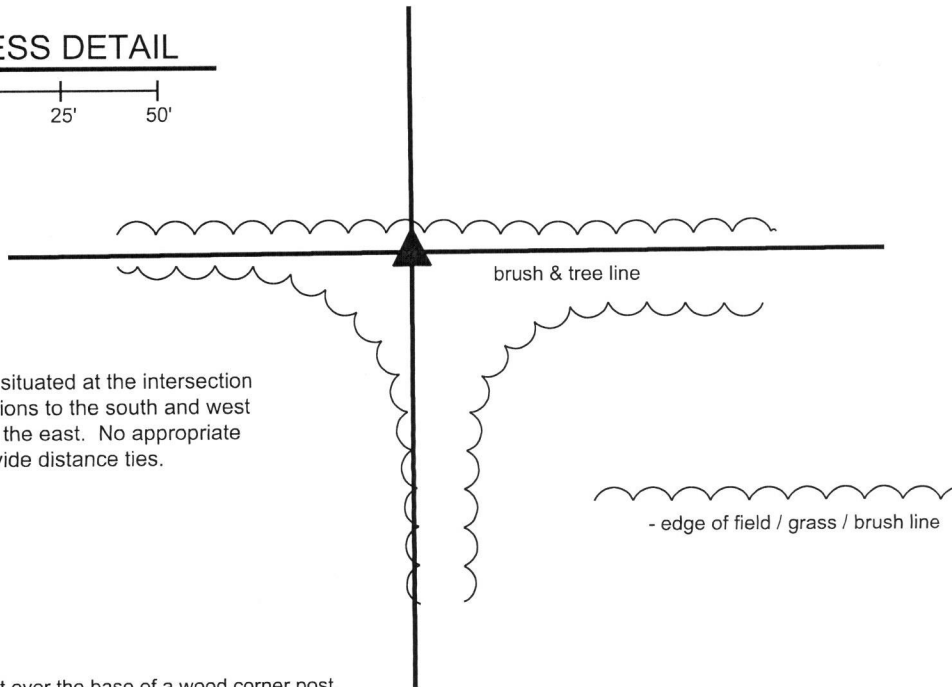
IN02\_T18NR1W27\_80 IN02\_T18NR1W26\_72

IN02\_T18NR1W34\_08 IN02\_T18NR1W35\_00



### CORNER WITNESS DETAIL

SCALE 1" = 50'

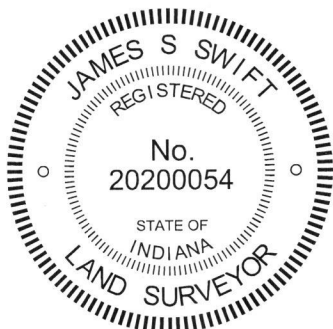


The Harrison monument is situated at the intersection of brush lines and field divisions to the south and west and a brush and tree line to the east. No appropriate objects are available to provide distance ties.

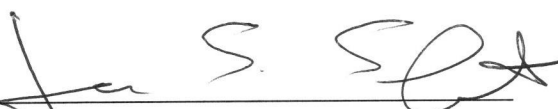
The Harrison monument was set over the base of a wood corner post.

No specific descriptions of this corner were found in the BCS Surveyor's Record beyond the original establishment of the corner as a wood post in 1820. The corner is referenced as the terminal point for measurements in an entry of April 20, 1874. No recent BCS tie cards were found referencing the corner. A survey for INDOT by Frank T. Luse, LS #20000223, recorded in Survey 15, pages 52-53 in the Office of the Boone County Recorder, shows the corner as "post base." No other recorded surveys were found which reference the corner.

This corner was excavated on April 2, 2019. Prior to excavation, in April 2016, a wood corner post had been observed at the corner, fallen on the ground. On April 2, 2019, the post was found yet lying on the ground amidst a variety of rocks and rubble, in-line with field divisions to the east and west and at the west edge of a wide, humped field division to the south. The position of the post, as it had stood prior to falling over, was confirmed by physically standing up the post which was yet attached to wires to the east and west. This position was found to agree well with the 2016 observation and the position shown on the Luse survey. Excavation in the vicinity of the post revealed numerous rocks, none of which could be confirmed as being a purposely set corner stone. The base of the post was found at 18 inches deep. It is noted that the position of the post is slightly west of what appears to be an old fence hump to the south, but the post itself had not only fencing attached to the east and west but evidence fencing cut-off to the north and south. No evidence of another post was found in line with the hump to the south. The position of the post works well with the measurement references from 1874 and the relative positions of a stone at the corner 1/2 mile west (see BCS corner SW-500-250) and a wood corner post found providing evidence of the quarter-quarter corner between said stone and the subject corner. The post was accepted as the best available evidence of the corner. The fencing was cut from the post and the top section of the post was placed nearby, amidst the various rubble. A Harrison monument was set directly over the base of the post on April 17, 2019.



  
Kenneth E. Hedge, County Surveyor

  
James S. Swift, IN LS 20200054  
May 8, 2019

Harrison Township

Section 27 T18N, R1W	Section 26 T18N, R1W
Section 34 T18N, R1W	Section 35 T18N, R1W

# SECTION CORNER RECORD

SW 550-100

## BOONE COUNTY SURVEYOR'S OFFICE

State Plane grid coordinates NAD83 (2011):

North: 1716403.44 East: 3119723.15 (U.S. survey feet)

Type of monument: 5/8-inch diameter rebar with cap stamped  
'Boone County Surveyor'

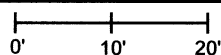
Depth: Fourteen inches below adjacent grade

Indiana tie card references:

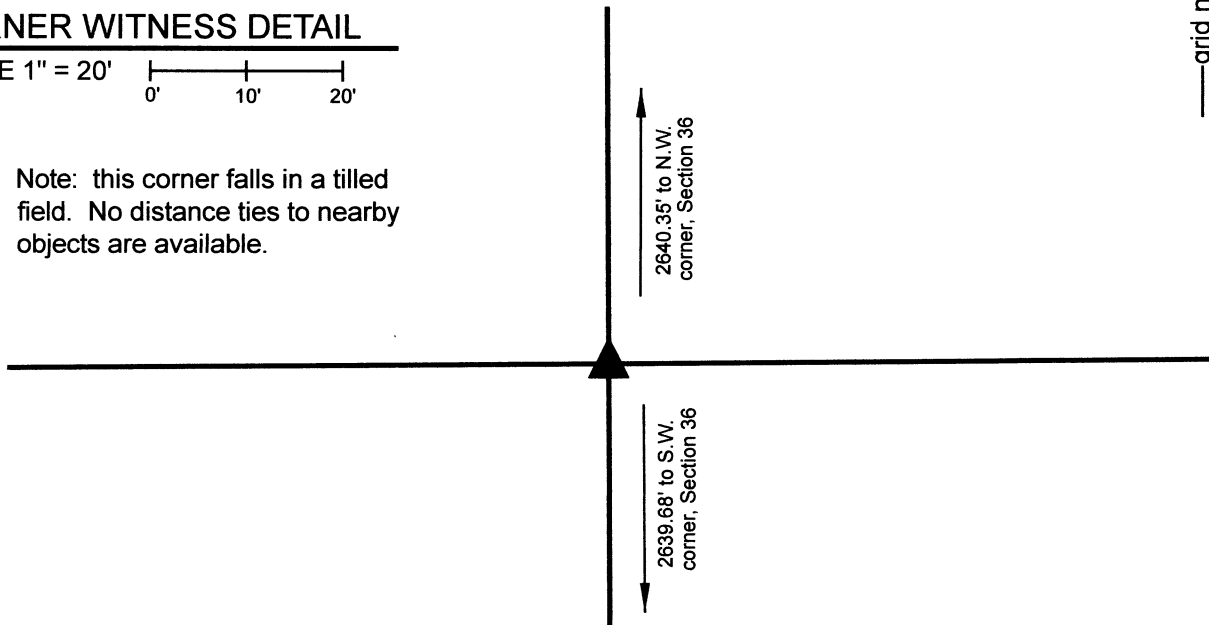
IN02\_T18NR1W36\_36 IN02\_T18NR1W35\_44

### CORNER WITNESS DETAIL

SCALE 1" = 20'



Note: this corner falls in a tilled field. No distance ties to nearby objects are available.



The rebar with BCS cap was set in a calculated position.

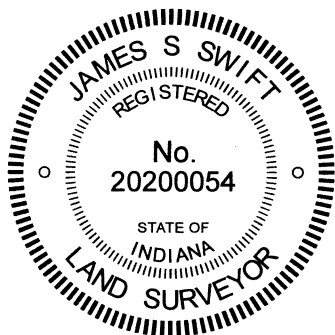
This corner is referenced on a BCS record which is dated, in the 1911 version of the Boone County Surveyor's Record, September 8-12, 1837. It is highly likely that this record is actually from 1857, not 1837. A pencil note in the physical book notes 1857. The style of the record, calling for a stone at the corner as referenced to two dimensions of the stone, is typical of BCS records from the 1850s, not the 1830s. Whichever decade, the record states, "Reestablished. Set Rock 5x10." The measurements to other corners noted in the sidebar of the record shows the distance from the subject corner to the northwest corner of Section 36 as one link longer than the distance from the subject corner to the southwest corner of Section 36.

No recent BCS tie cards were found referencing this corner, nor were any surveys found recorded in the Office of the Boone County Recorder which reference the corner.

The corner falls in a tilled field and no stone was found, nor likely to be found. The position of the corner was established on a straight line connecting the southwest and northwest corners of Section 36, at a proportional distance based on the 1 link variation noted in the BCS record. It is noted that the straight line between the section corners works remarkably well with a standing fence found along the west line of Section 36, from the northwest corner thereof to a corner post approximately 968 feet south. No other fencing or evidence of possession was found along the line between Sections 35 and 36.

A 24-inch length of 5/8-inch diameter rebar was set at 14 inches deep at the calculated, proportional position. The rebar was capped with a metal cap stamped 'Boone County Surveyor.'

This corner was originally established as a wood post in 1820.

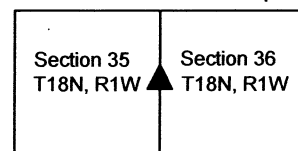


*Carol Cunningham*  
 Carol Cunningham, County Surveyor

*James S. Swift*  
 James S. Swift, IN LS 20200054

March 29, 2023

Harrison Township



# SECTION CORNER RECORD

SW 550-200

## BOONE COUNTY SURVEYOR'S OFFICE

State Plane grid coordinates NAD83 (2011):

North: 1716366.08 East: 3114400.82 (U.S. survey feet)

Type of monument: 5/8" rebar with metal cap stamped 'Boone County Surveyor'

Depth: Two inches above surrounding ground

Indiana tie card references:

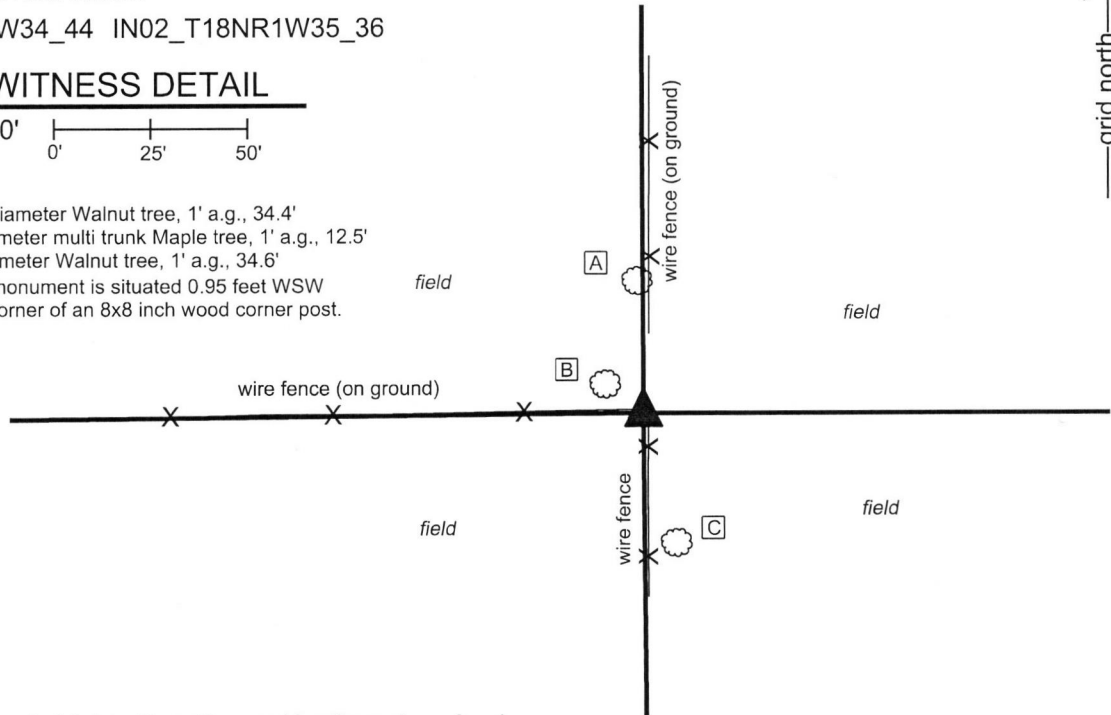
IN02\_T18NR1W34\_44 IN02\_T18NR1W35\_36



### CORNER WITNESS DETAIL

SCALE 1" = 50'

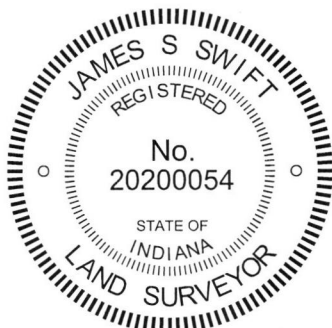
- A - S.E. side 16" diameter Walnut tree, 1' a.g., 34.4'
  - B - E. side 24" diameter multi trunk Maple tree, 1' a.g., 12.5'
  - C - N. side 12" diameter Walnut tree, 1' a.g., 34.6'
- Note: the corner monument is situated 0.95 feet WSW of the southwest corner of an 8x8 inch wood corner post.



The rebar was set in a calculated position with respect to witness stones found.

A BCS record of October 10, 1912, states, with respect to this corner, "Set two rocks, each 5 links and 5 links west of true corner." No recent BCS tie cards were found referencing this corner. A survey by Jerry L. Carter, LS #S0350, recorded as Instrument 0410697 in the Office of the Boone County Recorder, shows the corner as a headpost.

This corner was excavated on May 16, 2019. Prior to excavation, a wood corner post matching the position of the headpost shown on the Carter survey was found at the intersection of fences to the north, south and west. The fence to the south is standing while the fencing to the north and west are generally on the ground. The post is ancient, 8 inches square, with wooden braces to the south and west. Excavation around the post revealed two large rocks found north and west of the post and one small rock found to the south of the post. None of these rocks appeared to be monuments marking the corner. All three were haphazard in orientation and appeared to simply be rocks located in the vicinity of the post. Probing to the east and west of the post revealed two stones found, each at 20 inches deep, the top centers of which were located precisely 10 links (6.6 feet) apart. The tops of both stones were exposed and measured. The easterly of the stones measures approximately 6 inches N-S by 8 inches E-W on top. The westerly of the stones measures 9 inches N-S by 10 inches E-W on the top. Possible etched marks were detected on both stones, though the marks are not deeply etched in the rocks and it is not possible to positively confirm them as purposely etched markings. As noted, the centers of the tops of the stones were located precisely 10 links apart. No other stones were found in the vicinity of the post via excavation or probing. The stones were accepted as representing the witness rocks called in the 1912 record. The position of the corner was established at the midpoint of a line connecting the respective tops of the stones, 5 links from each stone. This position falls 0.95 foot WSW of the southwest edge of the corner post and slightly south of the wood brace attached to the west side of the post. A 36 inch length of 5/8 inch rebar was set vertically in concrete to mark the corner position. The rebar is capped with a metal cap stamped 'Boone County Surveyor' with a punch mark at the precise position of the corner. This corner was originally established as a wood post in 1820



Kenneth E. Hedge, County Surveyor

James S. Swift, IN LS 20200054  
June 12, 2019

Harrison Township

Section 34 T18N, R1W	Section 35 T18N, R1W
-------------------------	-------------------------

# SECTION CORNER RECORD

# SW 600-100

## BOONE COUNTY SURVEYOR'S OFFICE

State Plane grid coordinates NAD83 (2011):

Corner 1: North: 1713763.82 East: 3119741.54 (U.S. survey feet)

Harrison, 4" disk 'Section Corner' One inch below adjacent road

Depth: One inch below adjacent road surface

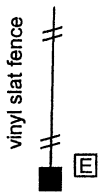
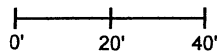
Indiana tie card references:

IN02\_T18NR1W36\_72 IN02\_T18NR1W35\_80

IN02\_T17NR1W02\_08 IN02\_T17NR1W01\_00

### CORNER WITNESS DETAIL

SCALE 1" = 40'

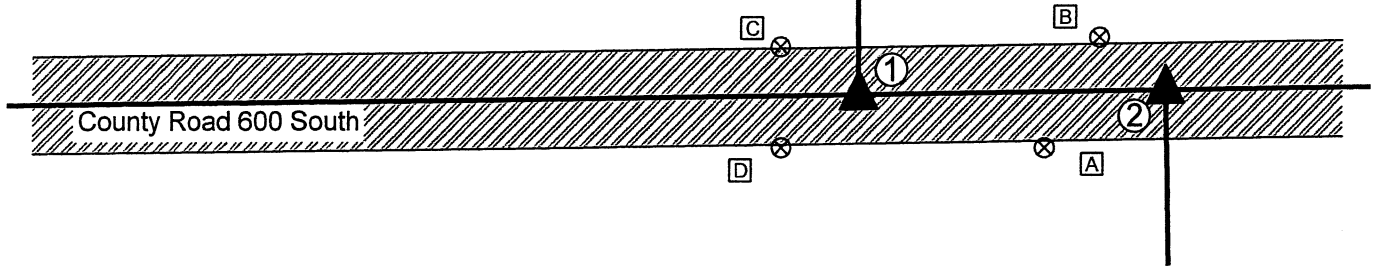


- ① S.E. Corner, Section 35  
S.W. Corner, Section 36  
T 18 N, R 1 W  
Harrison Monument set
- ② N.W. Corner, Section 1  
N.E. Corner, Section 2  
T 17 N, R 1 W  
Position not yet determined



#### TIES TO CORNER 1 ONLY

- A - Boone County witness mark, flush, 40.6'
- B - Boone County witness mark, flush, 51.9'
- C - 5/8" rebar found, flush, 19.4'
- D - 5/8" rebar found, flush, 19.6'
- E - South edge vinyl fence post, flush, 147.8'

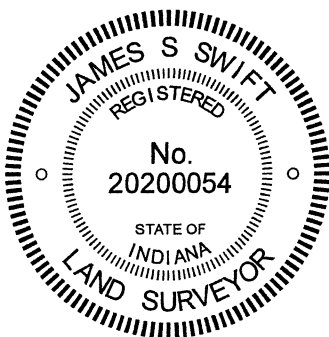


The Harrison monument was set in place of a rebar found. A BCS record of September 9-12, 1857 states, with respect to Corner 1, "Reestablished. Set Rock 5x12." A BCS record of February 11-12, 1867 states, with respect to Corner 2, "Reest. Set stake."

A BCS tie card dated March 18, 1996 shows Corner 1 as a rebar 9.75 feet east of a P.K. Nail.

Corner 1 was excavated on July 31, 2020. Prior to excavation, two mag nails were found at a separation of 60.6 feet east-west. These two nails appeared to have been intended to mark the respective standard and closing corners. However, the offset of 60.6 feet is substantially less than the original federal offset of 103 links or 67.98 feet. Based on extensive analysis of the relative positions of found evidence as correlated with relevant information in the BCS Surveyor's Record entries, it was concluded that the westerly of the nails, ostensibly marking Corner 1 was too far east. Prior to excavation, the westerly of the two nails was removed but no additional metal reading was detected. However, a rebar was found at 6 inches deep in the road bed approximately 4 feet west of the westerly nail, at the estimated position of the corner as shown on the 1996 tie card. Excavation around the rebar and up to 6 feet west did not reveal further ancient evidence of the corner. A railroad spike, perhaps the same monument as shown on the 1996 tie card was found in the immediate vicinity of the found rebar, but the spike had lost the magnetic character which allows it to be detected by a ferrous metal detector / magnetic locator. The spike was disturbed during excavation and the precise location of this monument was not specifically observed. Excavation was performed to 1 foot east, 6 feet west, 2.5 feet north and 2.5 feet south of the found rebar, to a depth of 2 feet, which is below the bottom of the road bed. No further evidence of Corner 1 was found. The position of the rebar found prior to excavation was held to determine the position of the corner. A Harrison monument was set at this position on July 31, 2020.

The precise position of Corner 2 will be determined at a later date, after the south quarter corner of Section 36 is excavated and determined.



*Kenneth E. Hedge*  
 \_\_\_\_\_  
 Kenneth E. Hedge, County Surveyor

*James S. Swift*  
 \_\_\_\_\_  
 James S. Swift, IN LS 20200054  
 March 10, 2021

#### Harrison Township

Section 35 T18N, R1W	Section 36 T18N, R1W
Section 2 T17N, R1W	Section 1 T17N, R1W

# SECTION CORNER RECORD

# SW 600-150

## BOONE COUNTY SURVEYOR'S OFFICE

State Plane grid coordinates NAD83 (2011):

Corner 1: North: 1713738.12 East: 3117078.71 (U.S. survey feet)

Corner 2: North: 1713738.77 East: 3117146.08 (U.S. survey feet)

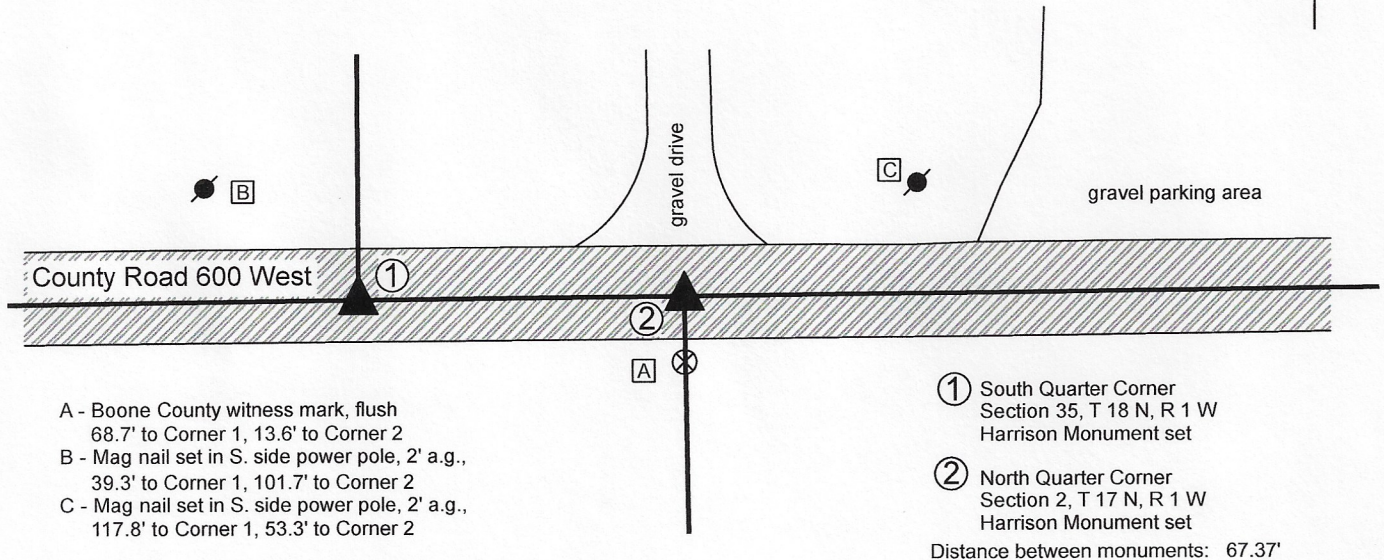
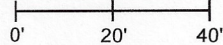
Both monuments: Harrison, 4" disk 'Section Corner', One inch below adjacent road

Indiana tie card references:

IN02\_T18NR1W35\_76 IN02\_T17NR1W02\_04

### CORNER WITNESS DETAIL

SCALE 1" = 40'



- A - Boone County witness mark, flush  
68.7' to Corner 1, 13.6' to Corner 2
- B - Mag nail set in S. side power pole, 2' a.g.,  
39.3' to Corner 1, 101.7' to Corner 2
- C - Mag nail set in S. side power pole, 2' a.g.,  
117.8' to Corner 1, 53.3' to Corner 2

- ① South Quarter Corner  
Section 35, T 18 N, R 1 W  
Harrison Monument set
- ② North Quarter Corner  
Section 2, T 17 N, R 1 W  
Harrison Monument set

Distance between monuments: 67.37'

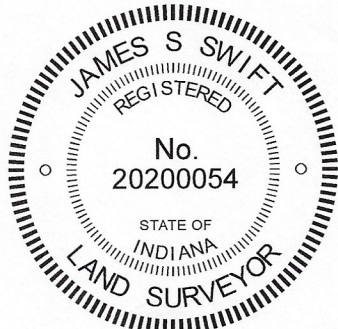
The Harrison monuments at both corners were set over stones found.

With respect to Corner 1, a BCS record of May 29, 1883 states, "Reestablished from stumps of both trees. Rock 17.15.6 marked +." A BCS tie card dated March 18, 1996 shows the corner as a railroad spike. With respect to Corner 2, A BCS record of September 27, 1871 states "Reest. from one tree. Set Rock 12.9.5 +." A BCS tie card dated December 21, 1982 states "No stone found. Set RR spk."

Corner 1 was excavated on July 20, 2020. Prior to excavation, a railroad spike was found at 5 inches deep in the asphalt roadway, in agreement with the 1996 tie card. Excavation revealed a stone found at 16 inches deep, directly below the railroad spike. With the top 10 inches of the stone exposed, it measured 15 inches EW by 6 inches NS, matching two of the dimensions recited in the 1883 record. The stone had a rough surface upon which no specific mark was detected. The stone was held as marking the corner and a Harrison monument was set over the top, center of the stone, in the same position as the railroad spike found prior to excavation.

Corner 2 was excavated on July 31, 2020. Prior to excavation, a railroad spike was found at 5 inches deep in the asphalt roadway, in agreement with the 1982 tie card. Excavation revealed the stone called in the 1871 record at 24 inches deep. The stone measured 9 inches E-W by 5 inches N-S by 12 inches tall, as measured on the south side. The stone appeared to be leaning slightly toward the south. The stone was directly below the railroad spike. It appears that in 1982 the proper position was excavated, but not to sufficient depth to expose the stone. The stone was held as marking the corner. A Harrison monument was set on the township line as defined by the standard corner (Corner 1) and the standard corner approximately 1/2 mile east (see BCS Corner SW 600-100). This position agreed in the E-W dimensions and fell within 0.1 foot N-S of the position of the railroad spike found prior to excavation. The average federal closing distance at this corner is 104 links or 68.64 feet. The corners as monumented are separated by 67.37 feet, identical to the separation of the railroad spikes found prior to excavation.

Corner 1 was originally established as a wood post in 1819. Corner 2 is not an original federal corner.



*Kenneth E. Hedge*  
 Kenneth E. Hedge, County Surveyor

*James S. Swift*  
 James S. Swift, IN LS 20200054  
 August 5, 2020

Harrison Township

