

SECTION CORNER RECORD

NE 000-900

BOONE COUNTY SURVEYOR'S OFFICE

State Plane grid coordinates NAD83 (2011):

Corner 1: North: 1746512.07 East: 3172548.43 (U.S. survey feet)

Corner 2: North: 1746509.06 East: 3172389.93 (U.S. survey feet)

Type and depth of monument:

3/4 inch diameter iron pin, flush (Corner 2) or 1 inch deep (Corner 1)

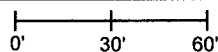
Indiana tie card references:

IN02_T19NR2E33_80 IN02_T19NR2E34_72

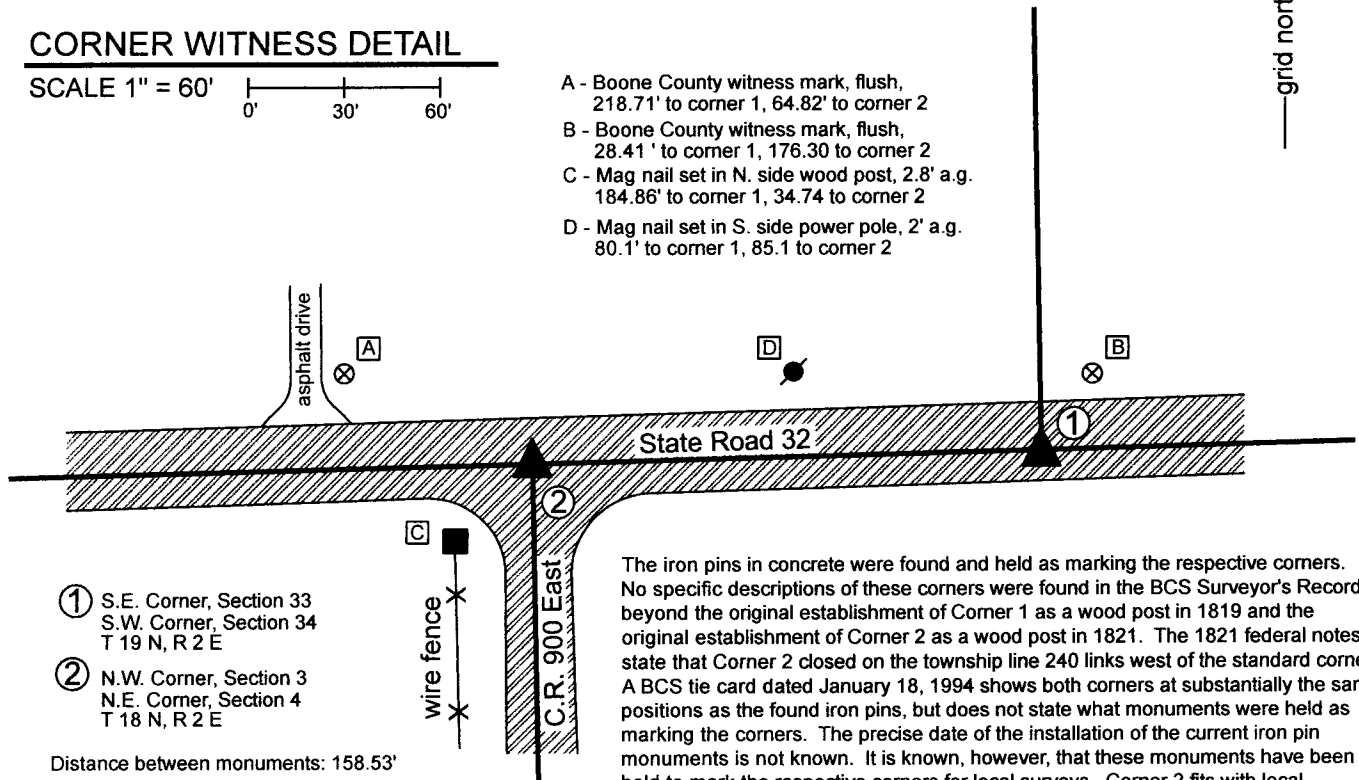
IN02_T18NR2E04_08 IN02_T18NR2E03_00

CORNER WITNESS DETAIL

SCALE 1" = 60'



- A - Boone County witness mark, flush, 218.71' to corner 1, 64.82' to corner 2
- B - Boone County witness mark, flush, 28.41' to corner 1, 176.30 to corner 2
- C - Mag nail set in N. side wood post, 2.8' a.g. 184.86' to corner 1, 34.74 to corner 2
- D - Mag nail set in S. side power pole, 2' a.g. 80.1' to corner 1, 85.1 to corner 2

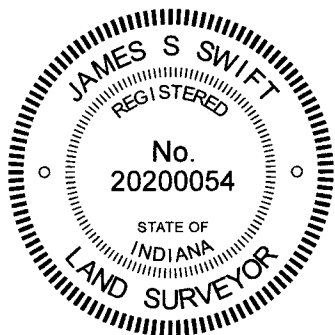


- ① S.E. Corner, Section 33
S.W. Corner, Section 34
T 19 N, R 2 E
- ② N.W. Corner, Section 3
N.E. Corner, Section 4
T 18 N, R 2 E

Distance between monuments: 158.53'
Original closing distance = 240 links (158.4')

Note: corner 2 is 1.04' north of the township line as defined between corner 1 and the standard corner to the west (see NE 000-850)

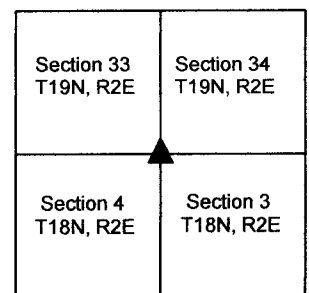
The iron pins in concrete were found and held as marking the respective corners. No specific descriptions of these corners were found in the BCS Surveyor's Record beyond the original establishment of Corner 1 as a wood post in 1819 and the original establishment of Corner 2 as a wood post in 1821. The 1821 federal notes state that Corner 2 closed on the township line 240 links west of the standard corner. A BCS tie card dated January 18, 1994 shows both corners at substantially the same positions as the found iron pins, but does not state what monuments were held as marking the corners. The precise date of the installation of the current iron pin monuments is not known. It is known, however, that these monuments have been held to mark the respective corners for local surveys. Corner 2 fits with local evidence of that corner, being at the approximate center of the intersection of the east-west state road and the county road to the south. Corner 1 is at a distance east of Corner 2 which closely matches the federal closing distance of 240 links. As these corners fall in a state road, no excavation was performed. The found iron pins were held as marking the respective corners.



Kenneth E. Hedge
Kenneth E. Hedge, County Surveyor

James S. Swift
James S. Swift, IN LS 20200054
January 19, 2022

Union Township



SECTION CORNER RECORD

BOONE COUNTY SURVEYOR'S OFFICE

NE 000-950

State Plane grid coordinates NAD83 (2011):

North: 1746583.21 East: 3175197.94 (U.S. survey feet)

North: 1746580.25 East: 3175087.76 (U.S. survey feet)

Type of monument: Corner 1: Plug in Monument box, INDOT Type B

Type of monument: Corner 2: Railroad spike

Depth: Flush with adjacent road surface

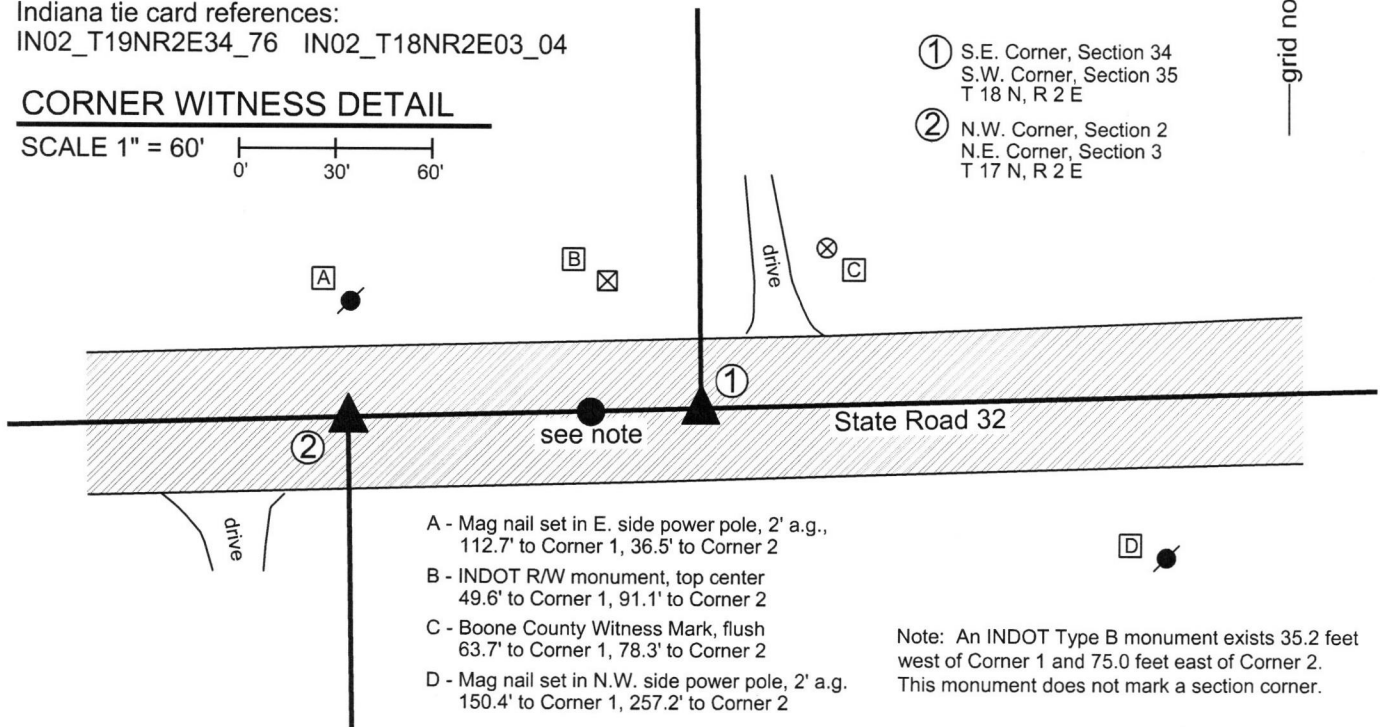
Indiana tie card references:

IN02_T19NR2E34_76 IN02_T18NR2E03_04

CORNER WITNESS DETAIL

SCALE 1" = 60'

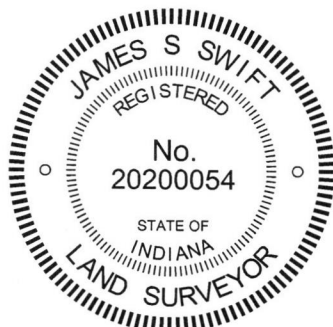
- ① S.E. Corner, Section 34
S.W. Corner, Section 35
T 18 N, R 2 E
- ② N.W. Corner, Section 2
N.E. Corner, Section 3
T 17 N, R 2 E



- A - Mag nail set in E. side power pole, 2' a.g.,
112.7' to Corner 1, 36.5' to Corner 2
- B - INDOT R/W monument, top center
49.6' to Corner 1, 91.1' to Corner 2
- C - Boone County Witness Mark, flush
63.7' to Corner 1, 78.3' to Corner 2
- D - Mag nail set in N.W. side power pole, 2' a.g.
150.4' to Corner 1, 257.2' to Corner 2

Note: An INDOT Type B monument exists 35.2 feet west of Corner 1 and 75.0 feet east of Corner 2. This monument does not mark a section corner.

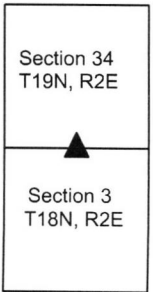
The INDOT Type B monuments at Corner 1 was found in place. The railroad spike at Corner 2 was set by this office. A BCS record dated March 13, 1946 shows Corner 2 and provides distance ties to two "Sugar" Trees (Maples.) A subsequent record of January 8, 1874 states, with respect to Corner 2, "Reestablished from NE Sugar after boxing. Set two Rocks. One 13.10.6 +, top one 14.12.8+." No specific descriptions were found for Corner 1, nor were any recent BCS tie cards found referencing this set of corners. The exact date of the installation of the Type B monument at Corner 1 is not known, but it is known that this monument replaced a railroad spike which previously existed at this corner. Excavation was not performed at this corner as it is located within a State Highway. The monumented position of Corner 1 fits with the relative positions of proximate corners and is known to have been held for numerous surveys. The Type B monument is accepted as marking Corner 1. The earliest recorded survey which addresses the two corners together is a survey by Evergreen Planners, Inc., dated May 27, 1982, recorded in Survey Book 1, pages 40-41 in the Boone County Recorder's Office, a revised version of which is recorded in Survey Book 1, pages 72-73. The survey established the closing corner (Corner 2) at a distance west of the standard corner (Corner 1) which is the average of the original federal closing distances at the adjacent section corners to the east and west. The separation distance is 110.22 feet (167 links). No interpretations of the location of this corner have been found which contradict this position. The same position was held by a Route Control Survey by Frank T. Luse, INDOT District Surveyor, recorded in Survey Book 13, page 50 in said Recorder's Office. No monument was found marking the corner. A railroad spike was set at Corner 2 on August 28, 2015. Corner 1 was originally established as a wood post in 1819. Corner 2 is not an original federal corner.



Kenneth E. Hedge
Kenneth E. Hedge, County Surveyor

James S. Swift
James S. Swift, IN LS 20200054
March 23, 2017

Union Twp



SECTION CORNER RECORD

NE 000-1000

BOONE COUNTY SURVEYOR'S OFFICE

State Plane grid coordinates NAD83 (2011):

North: 1746657.46 East: 3177847.13 (U.S. survey feet)

North: 1746655.71 East: 3177785.12 (U.S. survey feet)

Type of monument: Railroad spike

Depth: Flush with adjacent road surface

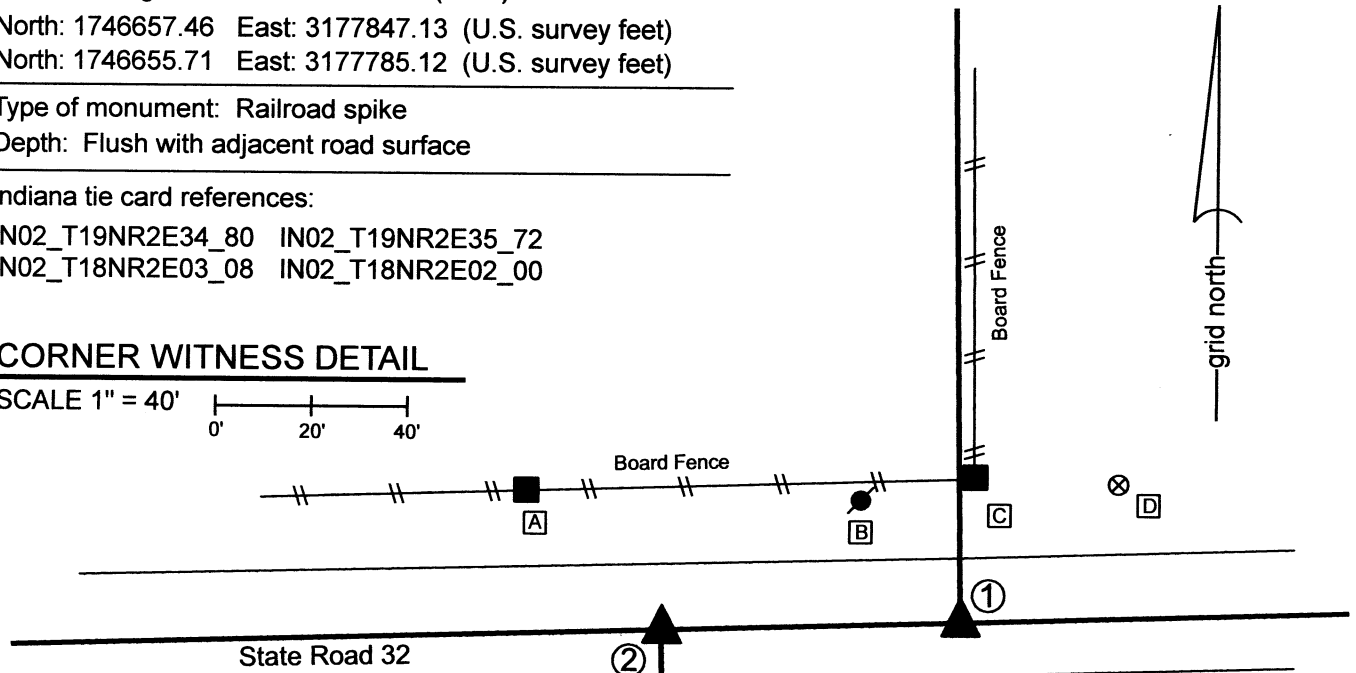
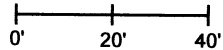
Indiana tie card references:

IN02_T19NR2E34_80 IN02_T19NR2E35_72

IN02_T18NR2E03_08 IN02_T18NR2E02_00

CORNER WITNESS DETAIL

SCALE 1" = 40'



A - Mag nail set in S. edge wood post,
94.5' to corner 1, 40.7' to corner 2

B - Nail in bottle cap found in S.E. side power pole, 1' a.g.
31.2' to corner 1, 50.3' to corner 2

C - Mag nail set in S. side wood post, 0.6' a.g.,
30.1' to corner 1, 72.1' to corner 2

D - Boone County witness mark, flush
43.6' to corner 1, 99.5' to corner 2

① S.E. Corner, Section 34
S.W. Corner, Section 35
T 19 N, R 2 E

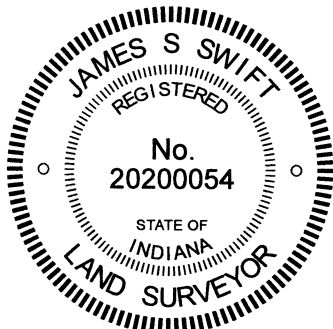
② N.W. Corner, Section 2
N.E. Corner, Section 3
T 18 N, R 2 E

Distance between monuments = 62.04' (94 links)

The railroad spikes were set at calculated positions.

Prior to the establishment of these corners, no existing monuments were found marking the corners, nor were consistent, widely accepted positions found documented for the corners. A Mag nail found in the general vicinity of Corner 1 does not fit with local evidence and was not held as marking the corner. The available evidence which indicates the original positions of these corners was found in the form of the existing roadway of S.R. 32 and a section of ancient fence found existing from approximately one-quarter mile north of Corner 1, north for approximately 250 feet, at which point an ancient corner post exists at the corner of fences to the south and east. The post is witnessed by a rebar situated at the northwest edge of the post. It was discovered that a line prolonged from the west quarter corner of section 35 (see BCS Corner NE-050-1000) through the aforementioned corner post coincides precisely with the remaining section of old fence south of said post. It was also discovered that computing the southeast corner of section 34 (Corner 1) at the point where said prolonged line intersects the center of SR 32, this position fits well with the relative positions of the southwest and south quarter corners of Section 34 and the northwest and north quarter corners of Section 3. Computing the position of Corner 2 at the record closing offset of 94 links west of Corner 1 produces a position which fits generally well with deed descriptions in Section 2 and 3. The computed positions were held as marking the corners. These positions were supplied to INDOT for purposes of determining the locations of the corners for a Location Route Control Survey by INDOT, certified by Frank T. Luse, INDOT District Surveyor, recorded in Survey Book 13, page 50. The computed positions were held by INDOT for the surveys associated with the reconstruction of the intersection of SR 32 and US 421 in 2015. The railroad spikes were set on August 28, 2015. It is noted that a board fence north and slightly east of Corner 1 appears to serve as an animal enclosure, is not associated with existing deed lines and does not appear to be evidence of the original section lines.

Corner 1 was originally established as a wood post in 1819. Corner 2 was originally established as a wood post in 1821.



Carol Cunningham
Carol Cunningham, County Surveyor

James S. Swift
James S. Swift, IN LS 20200054

March 23, 2017, Revised May 31, 2023

Union Township

Section 34 T19N, R2E	Section 35 T19N, R2E
Section 3 T18N, R2E	Section 2 T18N, R2E

SECTION CORNER RECORD

NE 050-1000

BOONE COUNTY SURVEYOR'S OFFICE

State Plane grid coordinates NAD83 (CORS 96):

North: 1749309.77 East: 3177811.93 (U.S. survey feet)

Type of monument: Harrison, 4" disk 'Section Corner'

Depth: Flush with adjacent road surface

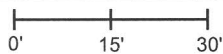
Indiana tie card references:

IN02_T19NR2E34_44

IN02_T19NR2E35_36

CORNER WITNESS DETAIL

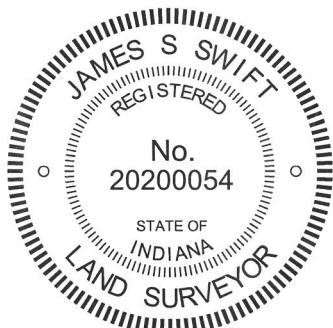
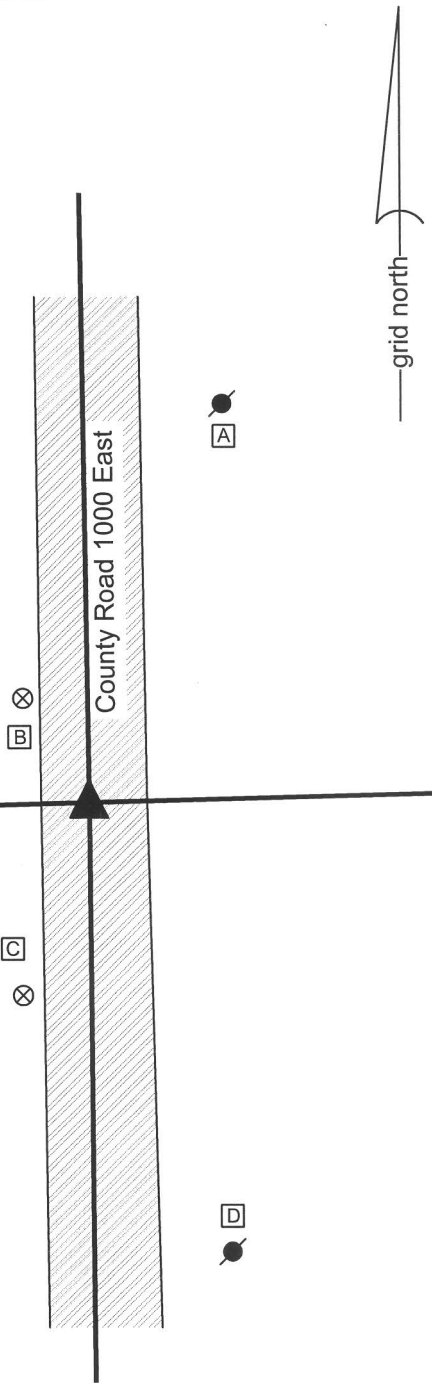
SCALE 1" = 30'



- A - Mag nail set in s. side power pole, 5' a.g., 64.13'
- B - Boone County witness mark, flush, 19.22'
- C - Boone County witness mark, flush, 31.77'
- D - Mag nail set in W. side power pole, 5' a.g., 72.91'

Boone County witness mark is a 3/8" diameter x 2' long rebar bearing a metal cap stamped "Boone County Witness Point."

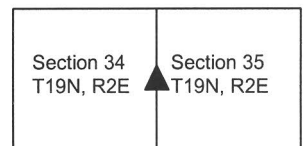
The harrison monument was set in place of a 5/8 inch rebar found. This corner falls at the point where the former Midland Railroad crossed County Road 1000 East by means of a wooden trestle. The relevant portion of the old railroad plans were made available to the surveyor's office by Jerry L. Carter of Carter Land Consultants. These plans do not show information pertaining to the location of the section line. The found rebar is shown as being set on a survey by Hahn and Associates as part of a survey recorded in Survey Book 1, page 38. This survey shows that the rebar was set at a position relative to adjoining deed descriptions and monumentation. Significant excavation was not performed in this area, as the roadway crosses an area of significant fill associated with the ground sloping towards a small creek to the south. The top of the rebar was bent as found with the bend point being at 6 inches deep, below which the rebar appeared to be straight and vertical. The rebar was removed and the harrison monument was set in place of the vertical part of the rebar. This corner was originally established as a wood post in 1821.



Kenneth E. Hedge
 Kenneth E. Hedge, County Surveyor

James S. Swift
 James S. Swift, IN LS 20200054
 March 26, 2013

Union Township



SECTION CORNER RECORD

NE 050-1100

BOONE COUNTY SURVEYOR'S OFFICE

State Plane grid coordinates NAD83 (2011):
North: 1749440.22 East: 3183123.66 (U.S. survey feet)

Type of monument: Harrison, 4" disk 'Section Corner'
Depth: Two inches below adjacent gravel road surface

Indiana tie card references:
IN02_T19NR2E35_44 IN02_T19NR2E36_36

CORNER WITNESS DETAIL

SCALE 1" = 40'



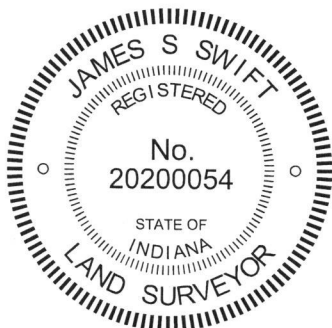
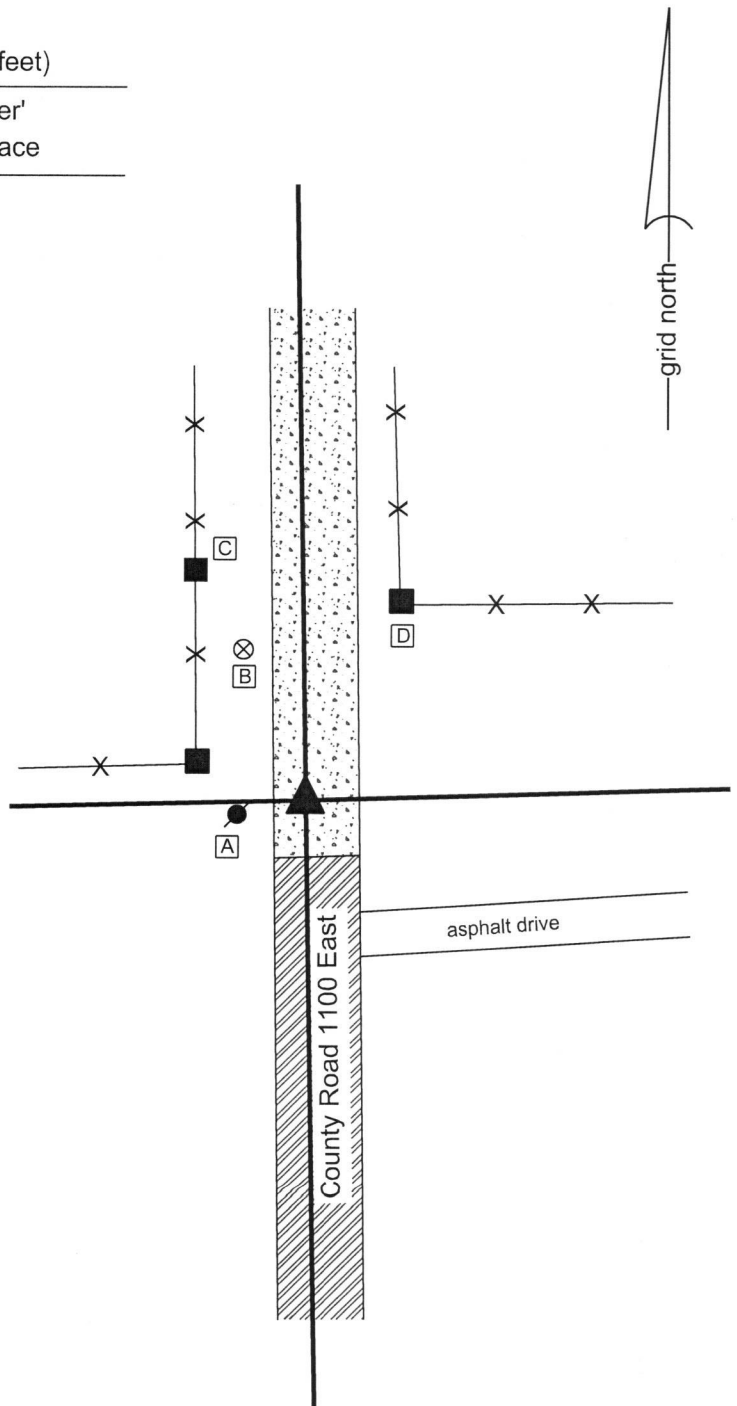
- A - Mag nail set in E. side power pole, 2' a.g., 13.3'
- B - Boone County witness mark, flush, 33.9'
- C - Mag nail set in E. side wood line post, 2' a.g., 53.1'
- D - Mag nail set in S.W. edge wood corner post, 2' a.g., 45.1'

The Harrison monument was set in place of a rebar and flat piece of steel found.
No specific descriptions of this corner were found in the BCS Surveyor's Record beyond the establishment of the corner as a wood post in 1821. A BCS tie card dated March 11, 1982 shows the corner as "found steel stake 3" x 3/8" 1.5' deep." The tie card shows the corner as falling within the right-of-way of the Midland Railroad, close to the south edge of the right-of-way.

This corner was excavated on April 9, 2018. Prior to excavation, a rebar with a red plastic cap was found 2 inches deep in the roadway in agreement with the representation of the corner as shown on the 1982 tie card. The rebar is known to have been held for surveys and deeds in the adjoining sections and is specifically called out as the corner for the adjoining properties to the west, described in Instruments 200700002097 and 201100010402 in the Office of the Boone County Recorder.

Excavation centered on the rebar revealed a 20 inch long flat piece of steel which matches the description of the monument described on the 1982 tie card, found directly below the rebar. Excavation of an area extending 2 feet south, 3 feet north, 1.5 feet east and 1.5 feet west of the rebar revealed no further evidence of the corner. The bottom of the road bed was found to be at approximately 18 inches deep. Excavation was performed to at least 22 inches deep.

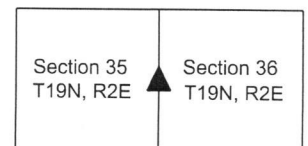
The found rebar, marking the position of the corner as demonstrated on the 1982 tie card, was held as marking the corner. The rebar and flat piece of steel were removed and replaced with a Harrison monument in the same position.



Kenneth E. Hedge
Kenneth E. Hedge, County Surveyor

James S. Swift
James S. Swift, IN LS 20200054
May 30, 2018

Union Township



SECTION CORNER RECORD

NE 100-900

BOONE COUNTY SURVEYOR'S OFFICE

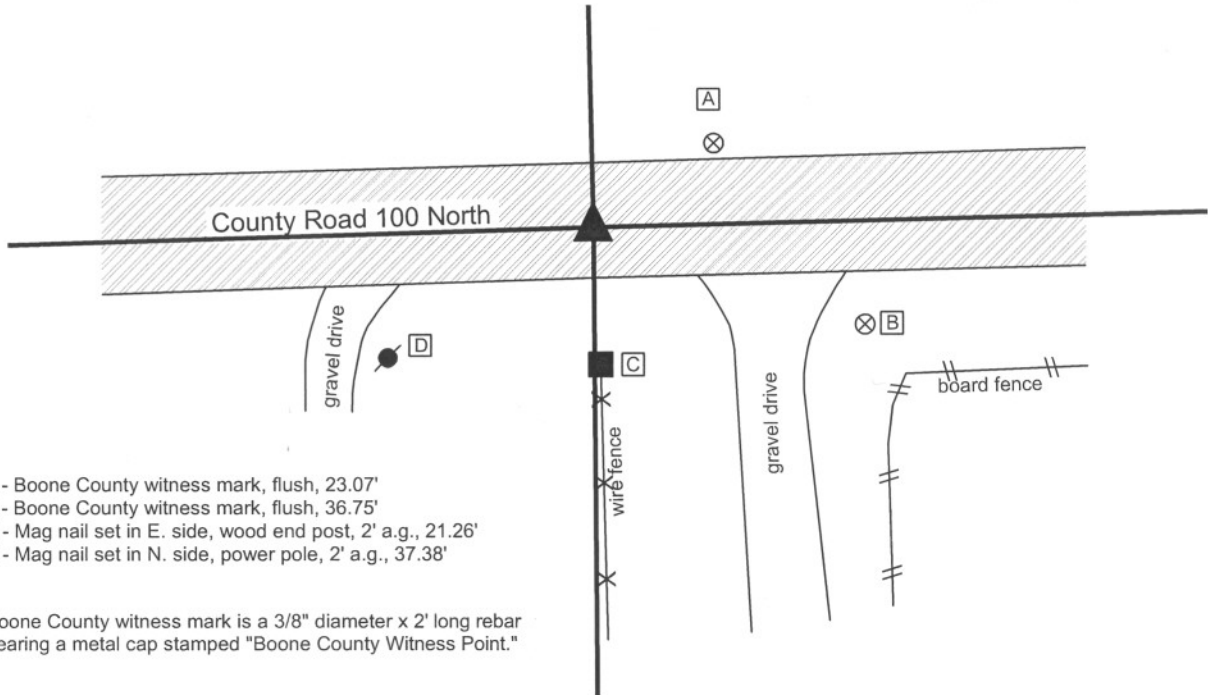
State Plane grid coordinates NAD83 (NSRS 2007):
 North: 1751821.74 East: 3172457.97 (U.S. survey feet)

Type of monument: Harrison, 4" disk 'Section Corner'
 Depth: One inch below adjacent road surface

Indiana tie card references:
 IN02_T19NR2E27_72 IN02_T19NR2E28_80
 IN02_T19NR2E33_08 IN02_T19NR2E34_00

CORNER WITNESS DETAIL

SCALE 1" = 30'
 0' 15' 30'



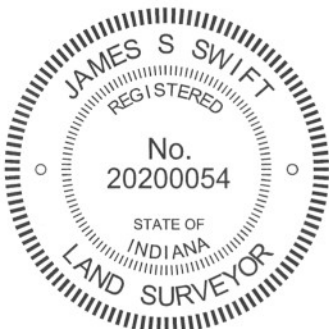
- A - Boone County witness mark, flush, 23.07'
- B - Boone County witness mark, flush, 36.75'
- C - Mag nail set in E. side, wood end post, 2' a.g., 21.26'
- D - Mag nail set in N. side, power pole, 2' a.g., 37.38'

Boone County witness mark is a 3/8" diameter x 2' long rebar bearing a metal cap stamped "Boone County Witness Point."

The harrison monument was set over a stone found.

A BCS tie card dated June 14, 1971 states "no stone, RRR put in." No specific description of this corner was found in the old BCS Surveyor's Record. This corner was excavated on August 23, 2010. Prior to excavation, a nail was found at the surface. Excavation revealed 3 rebars below the nail, generally surrounding the position of the nail. A railroad rail on end was found at 9 inches deep, directly below the position of the nail. Further excavation revealed three stones. The top two stones were found at 21 inches deep, situated next to each other, both embedded fully in the clay layer below the road. The north stone was 8x6x5 inches. The south stone was 10x7x7 inches. The third stone was below the top two, approximately centered between them, measuring 7x6x5 inches and situated at 27 inches deep. The stones were in line with the fence to the south and at the center of the road. The bottom stone is 1.8 feet south and 0.8 feet west of the nail and railroad rail, both of which were removed during excavation, along with the rebars and top two stones. The statement "no stone" on the 1971 tie card is clearly incorrect and also indicates that this crew was searching for, but did not find a corner stone. The found stones fit most characteristics of section corner stones, being embedded in the clay below the road and at the intersection of the center of the road with the prolonged line of the fence to the south. The situation of two stones next to each other above a third stones is not typical, but the stones clearly appeared to have been purposely set to mark the corner. The top center point of the lower stone was held as marking the corner and the harrison monument was set directly over this point. The lower stone was left in place and all other monuments were removed during excavation.

This corner was originally established as a wood post in July, 1821.



Kenneth E. Hedge
 Kenneth E. Hedge, County Surveyor

James S. Swift
 James S. Swift, IN LS 20200054
 July 25, 2011

Union Township

Section 28 T19N, R2E	Section 27 T19N, R2E
Section 33 T19N, R2E	Section 34 T19N, R2E

PHOTOGRAPHIC DOCUMENTATION

Date of photography: August 23, 2010

The railroad rail exposed.



The north top stone.



The south top stone (right) and the lower stone as first exposed.



View from the north, looking across the lower stone towards the post and trees to the south.



The lower stone.



For details and documentation, refer to related sheet "Section Corner Record."

SECTION CORNER RECORD

NE 100-950

BOONE COUNTY SURVEYOR'S OFFICE

State Plane grid coordinates NAD83 (NSRS 2007):
North: 1751886.92 East: 3175123.28 (U.S. survey feet)

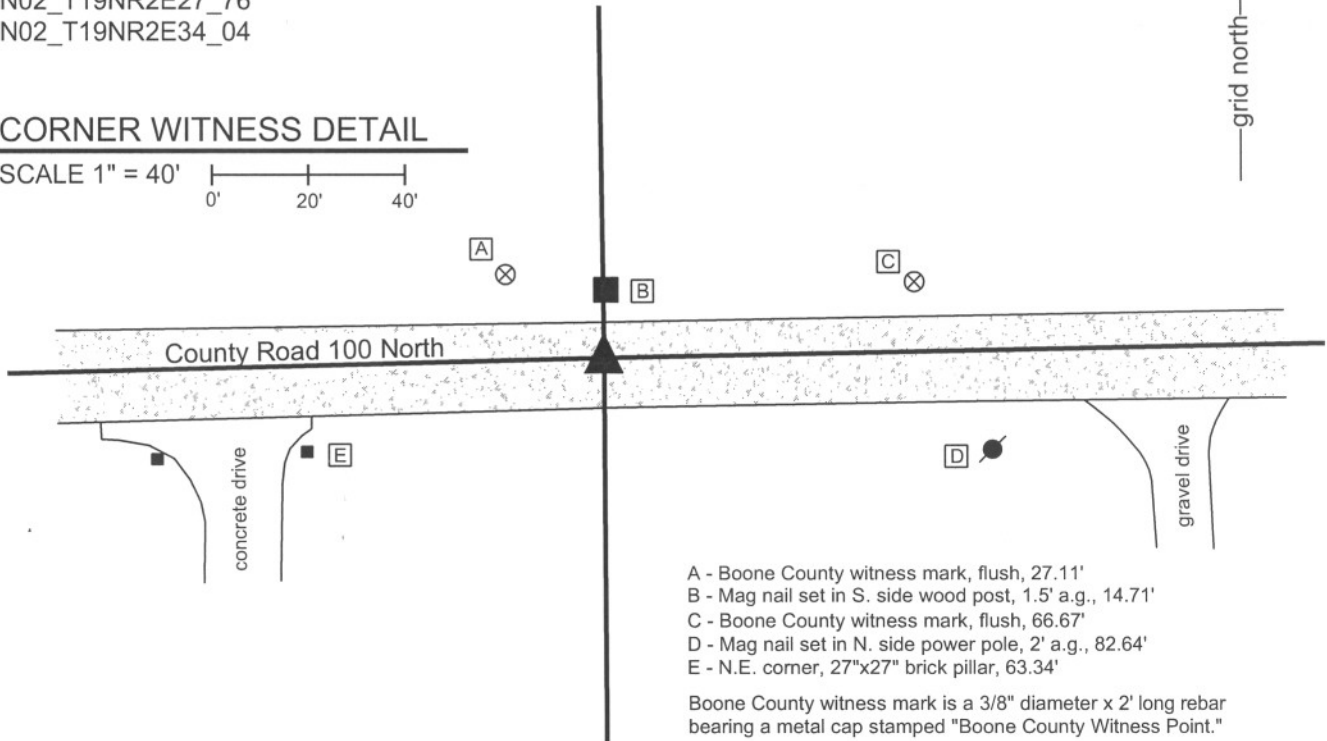
Type of monument: Harrison, 4" disk 'Section Corner'
Depth: Six inches below adjacent gravel road surface.

Indiana tie card references:
IN02_T19NR2E27_76
IN02_T19NR2E34_04



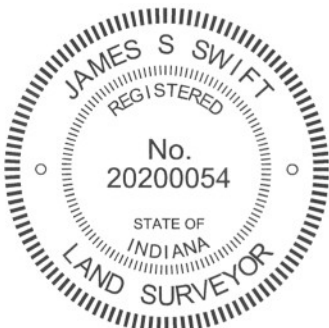
CORNER WITNESS DETAIL

SCALE 1" = 40'
0' 20' 40'



- A - Boone County witness mark, flush, 27.11'
 - B - Mag nail set in S. side wood post, 1.5' a.g., 14.71'
 - C - Boone County witness mark, flush, 66.67'
 - D - Mag nail set in N. side power pole, 2' a.g., 82.64'
 - E - N.E. corner, 27"x27" brick pillar, 63.34'
- Boone County witness mark is a 3/8" diameter x 2' long rebar bearing a metal cap stamped "Boone County Witness Point."

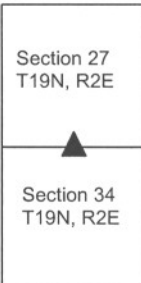
The harrison monument was set in place of a railroad rail found. A BCS tie card dated July 9, 1968 states "No stone." The tie card does not state more information about a monument set, but it is most likely that the found railroad rail was set at the time of the creation of the 1968 tie card. It is known that setting a section of railroad rail vertically was a common procedure of field crews from this office at that time. No specific descriptions of this corner were found in the old BCS Surveyor's Record. This corner was excavated on August 23, 2010. Prior to excavation the top of a piece of railroad rail was found, apparently leaning, in the approximate center of the road 2 feet west of a post on the south side of the road. Excavation revealed that the railroad rail was leaning significantly to the west. Holding the position of the bottom of the rail and standing the rail vertical, the top of the rail was approximately 9 inches east of the position as found prior to excavation. The 1968 ties are not conclusive, but the position of the rail as stood up fits well with the fence post on the north side of the road, which is agreement with the graphical representation of the corner on the 1968 tie card. The top of the rail had been at the surface of the gravel road and it is apparent that a road grader likely hit the top of the rail and leaned it to the west. Further excavation revealed a bolt spike near the surface of the road approximately 2 feet south and 4 feet west of the rail. No source information for this spike is known. No other monuments or evidence were found in an area of excavation extending 4 feet north, 4 feet east, 7 feet west and 7 feet south of the position of the top of the rail as originally found. The road bed is only 8 to 12 inches deep in this area. Excavation extended to a minimum of 18 inches deep, well into the clay layer below the road and well below the depth at which a corner stone or any other evidence of the corner might be found. The railroad rail was removed and a harrison monument was set in the position of the rail as stood vertically. This corner was originally established as a wood post in July, 1821.



Kenneth E. Hedge
Kenneth E. Hedge, County Surveyor

James S. Swift
James S. Swift, IN LS 20200054
July 25, 2011

Union Township



SECTION CORNER RECORD

NE 100-1000

BOONE COUNTY SURVEYOR'S OFFICE

State Plane grid coordinates NAD83 (NSRS 2007):

North: 1751938.83 East: 3177774.44 (U.S. survey feet)

Type of monument: Harrison, 4" disk 'Section Corner'

Depth: One inch below adjacent road surface

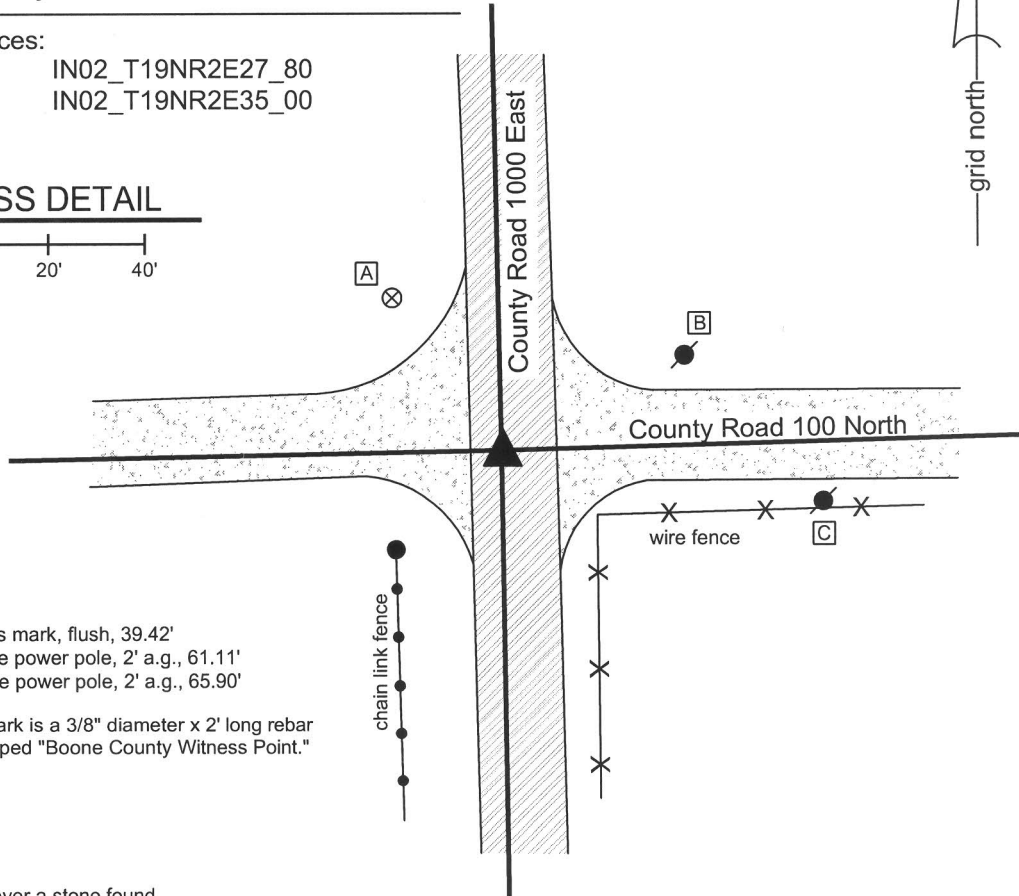
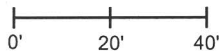
Indiana tie card references:

IN02_T19NR2E26_72 IN02_T19NR2E27_80

IN02_T19NR2E34_08 IN02_T19NR2E35_00

CORNER WITNESS DETAIL

SCALE 1" = 40'



- A - Boone County witness mark, flush, 39.42'
- B - Mag nail set in W. side power pole, 2' a.g., 61.11'
- C - Mag nail set in W. side power pole, 2' a.g., 65.90'

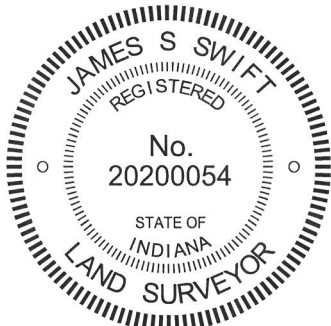
Boone County witness mark is a 3/8" diameter x 2' long rebar bearing a metal cap stamped "Boone County Witness Point."

The harrison monument was set over a stone found.

A BCS tie card dated August 6, 1974 states "No stone found." No specific descriptions of this corner were found in the old BCS Surveyor's Record, beyond the original establishment of the corner as a wood post by federal surveyors.

This corner was excavated on June 17, 2010. Prior to excavation, a rebar was visible at the surface. Excavation revealed a piece of railroad rail on end at 6 inches deep, adjacent to the rebar. The rebar was situated along the east side of the rail. Further excavation revealed a large stone found at 33 inches deep. The stone is 17 inches N-S by 26 inches E-W and was measured to be 22 inches tall at the N. side. The stone is embedded in the clay layer below the road bed, with the top of the stone protruding approximately 3 inches into the bottom of the road bed. The characteristics of this stone, including the depth, being embedded in the clay, the orientation aligned with cardinal directions and the position at the intersection of the two county roads are all consistent with other corner stones found. The fact that the stone is neither vertical nor has any specific identifiable markings is consistent with the fact that it is not mentioned in the BCS Surveyor's Record, as typically only the stones which can be positively identified as being set by County Surveyors are set vertically with markings, while the remaining cornerstones, including those found and held by the old County Surveyors, tend to have the same characteristics as the stone found at this corner. The harrison monument was set directly over the top, center of the stone. The rebar and rail, both removed during excavation, were 3.3 feet north and 0.3 and 0.2 feet east, respectively of the harrison. The 1974 reference to "no stone" indicates that a stone was searched for but not found. It is most likely that the railroad rail was set at that time, after the erroneous determination that other evidence, in the form of a stone, was not present.

This corner was originally established as a wood post 1821.



Kenneth E. Hedge

 Kenneth E. Hedge, County Surveyor

James S. Swift

 James S. Swift, IN LS 20200054
 July 25, 2011

Union Township

Section 27 T19N, R2E	Section 26 T19N, R2E
Section 34 T19N, R2E	Section 35 T19N, R2E

PHOTOGRAPHIC DOCUMENTATION

Date of photography: June 17, 2010

View of the stone from the north.



The stone being exposed. View from above.



The stone exposed. View from above.



View from above the stone, looking east along County Road 100 North.



View from above the stone, looking south along County Road 1000 East.



For details and documentation, refer to related sheet "Section Corner Record."