

SECTION CORNER RECORD

NW 000-900

BOONE COUNTY SURVEYOR'S OFFICE

State Plane grid coordinates NAD83 (2011):

Corner 1: North: 1745551.17 East: 3077233.44 (U.S. survey feet)

Corner 2: North: 1745551.16 East: 3077250.84 (U.S. survey feet)

Type of monument: Harrison, 4" disk 'Section Corner'

Depth: Six inches below adjacent road surface

Indiana tie card references:

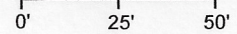
IN02_T19NR2W34_72 IN02_T19NR2W33_80

IN02_T18NR2W04_08 IN02_T18NR2W03_00

- A - Boone County witness mark, flush, 23.7' to Corner 1, 17.0' to Corner 2
- B - Boone County witness mark, flush, 31.5' to Corner 1, 47.0' to Corner 2
- C - Mag nail set in N. side pwp, 2' a.g., 125.3' to Corner 1, 142.7' to Corner 2
- D - Mag nail set in N. side pwp, 2' a.g., 127.8' to Corner 1, 110.8' to Corner 2

CORNER WITNESS DETAIL

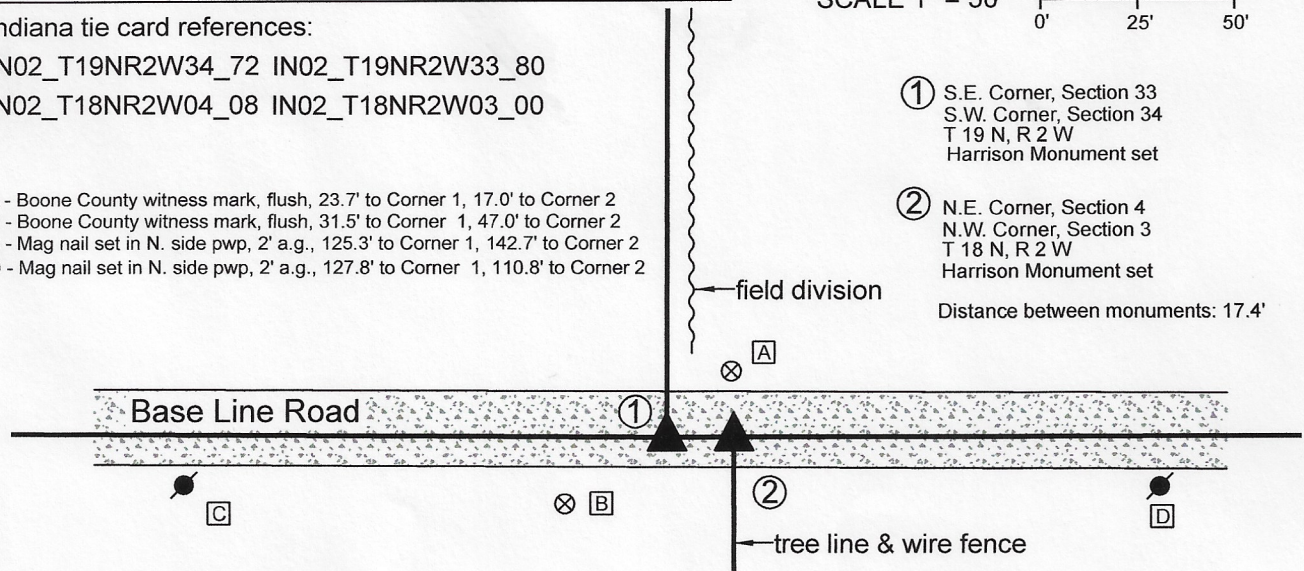
SCALE 1" = 50'



① S.E. Corner, Section 33
S.W. Corner, Section 34
T 19 N, R 2 W
Harrison Monument set

② N.E. Corner, Section 4
N.W. Corner, Section 3
T 18 N, R 2 W
Harrison Monument set

Distance between monuments: 17.4'



The Harrison Monument at Corner 1 was set in place of a stone found.

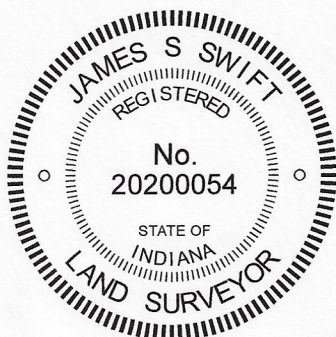
A BCS Record dated November 2-3, 1865 states, with respect to Corner 1, "Reestablished from trees. Set a Rock 20.13.3 + and an oak stake under it.

A BCS record dated October 22 and November 2, 1869 states, with respect to Corner 2, "Reest. from trees. Set a rock 9.7.4 1/2. Oak stake under it."

A BCS tie card dated August 30, 1968 states, with respect to Corner 1, "(No stone)." A BCS tie card dated October 16, 1969 states, with respect to Corner 2, "(No stone) Set RRR."

This set of corners was excavated on January 14, 2020. Prior to excavation, a 5/8 inch diameter rebar was found providing evidence of Corner 2. No metal survey monument was found providing evidence of Corner 1. It is noted that the original federal closing distance at these corners was 28 links, or 18.5 feet. The found rebar fit reasonably well with local evidence of Corner 2, in the form of the center of the east-west road and the northerly prongation of a fence to the south. A position 28 links west of the rebar fit approximately with the southerly prolongation of a fence existing from 1/4 to 1/2 mile north, but was well west of the north-south field division on the north side of the county road. Excavation at the estimated position of Corner 1 revealed a stone found at 11 inches deep. The stone was vertical and oriented in cardinal directions, measuring 18 inches tall by 9 inches north-south by 8 inches E-W, but did not match the description of the stone in the 1865 record. The stone was embedded in the clay layer below the road bed and clearly appeared to have been set to mark the corner. Excavation in the vicinity of the 5/8 inch rebar revealed the a stone found at 15 inches, clearly leaning toward the east. As stood up, the stone measured 12 inches tall by 9 inches N-S by 4 1/2 inches E-W. The stones were in similar positions in the north-south dimension, being slightly south of the apparent center of the roadway, and were separated by 17.4 feet in the east-west dimension, approximately 1 foot less than the reported federal offset of 18 links. Although the BCS tie cards for both corners call for railroad rails, no such monuments were found. Evidence of disturbance of the road bed and clay layer below the road bed indicate that the rail at Corner 2 may have been approximately 2 feet north of the stone found at that corner. The rebar, removed during excavation, had been 2.9 feet north of the top, center of the stone. The stones were accepted as the best available evidence of the respective corners. Both stones were removed. A Harrison monument was set in place of the top, center of the stone found marking Corner 1 on January 14, 2020. A Harrison monument was set at Corner 2, on the township line, 17.4 feet east of Corner 1, on June 22, 2020. This position agrees with the east-west position of the stone found at Corner 2, as stood up, and is close to the south edge of that stone, as originally found.

Corner 1 was originally established as a wood post in 1819. Corner 2 was originally established as a wood post in 1820.



Kenneth E. Hedge
Kenneth E. Hedge, County Surveyor

James S. Swift
James S. Swift, IN LS 20200054

June 30, 2020

Jefferson Township

Section 33 T19N, R2W	Section 34 T19N, R2W
Section 4 T18N, R2W	Section 3 T18N, R2W

SECTION CORNER RECORD

NW 000-950

BOONE COUNTY SURVEYOR'S OFFICE

State Plane grid coordinates NAD83 (2011):

North: 1745563.91 East: 3074589.18 (U.S. survey feet)

North: 1745563.80 East: 3074611.58 (U.S. survey feet)

Type of monument: Harrison, 4" disk 'Section Corner',

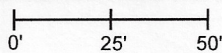
Depth: six inches below adjacent gravel road surface

Indiana tie card references:

IN02_T19NR2W33_76 IN02_T18NR2W04_04

CORNER WITNESS DETAIL

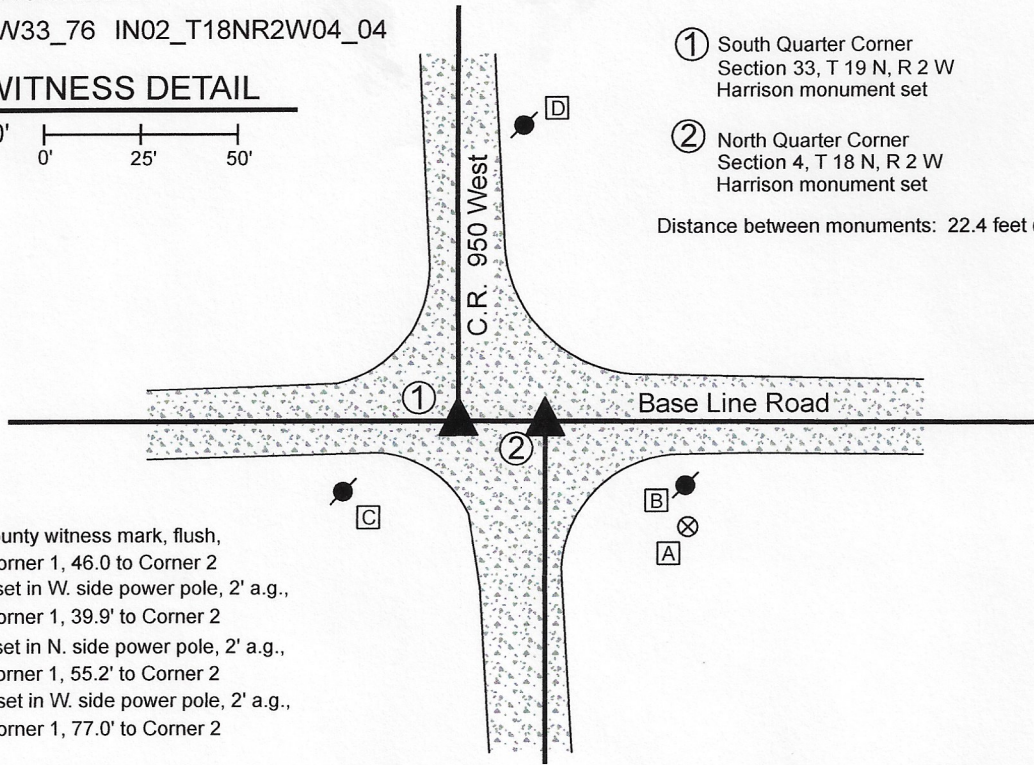
SCALE 1" = 50'



① South Quarter Corner
Section 33, T 19 N, R 2 W
Harrison monument set

② North Quarter Corner
Section 4, T 18 N, R 2 W
Harrison monument set

Distance between monuments: 22.4 feet (34 links)



- A - Boone County witness mark, flush,
65.4' to Corner 1, 46.0' to Corner 2
- B - Mag nail set in W. side power pole, 2' a.g.,
61.0' to Corner 1, 39.9' to Corner 2
- C - Mag nail set in N. side power pole, 2' a.g.,
34.9' to Corner 1, 55.2' to Corner 2
- D - Mag nail set in W. side power pole, 2' a.g.,
78.6' to Corner 1, 77.0' to Corner 2

The Harrison monument at Corner 2 was set in place of a railroad rail found. The Harrison monument at Corner 1 was set on the township line, 2.3 feet north of a railroad rail found.

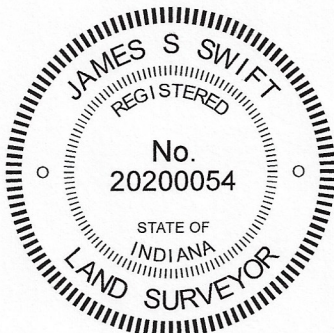
No specific descriptions of these corners were found in the BCS Surveyor's Record beyond the original establishment of Corner 1 as a wood post in 1819.

Corner 2 is not an original federal corner but is noted, though not described, in a BCS record of April 26, 1851.

Both corners are shown on a BCS tie card dated October 15, 1969 which states "Note stones located. R/R Rails set."

The rails shown on the 1969 tie card were found in good condition prior to excavation. The east-west separation of the rails was very close to the average federal closing distance of 34 links (22.4 feet) but were observed to be offset in the north-south dimension, with Corner 2 approximately 2.3 feet north of Corner 1.

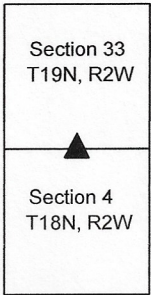
Excavation in January, 2020 of an area extending 4 feet north, 1 foot south, 1.5 foot east and 1.5 feet west of the rail shown as marking Corner 1 did not reveal further evidence of that Corner. Excavation was extended to the clay layer below the road bed, at approximately 30 inches deep. Excavation in June, 2020 of an area extending 2 feet north, 4 feet south, 1.5 foot east and 1.5 foot west of the rail shown as marking Corner 2 did not reveal further evidence of that corner. It is noted that the bottom of the road bed was quite rocky in both cases, indicating a previously wet and muddy section of wagon road. Both of the rails fit well with respective evidence of the original lines, being in line with the approximate centers of the roadways to the north and south. The rail at Corner 2 was better in line with the center of the east-west roadway than was the rail at Corner 1. The rail at Corner 2 was held as marking that corner and was replaced with a Harrison monument on June 4, 2020. Corner 1 was established on the township line as defined by the westerly extension of the line connecting the standard corner 1/2 mile east (see BCS Corner NW 000-900) through Corner 2 at the same east-west dimension as the rail shown on the 1969 tie card as marking Corner 1. This position fell 2.3 feet north of the position of the rail, which had been removed in January, 2020. A Harrison monument was set at this position on June 5, 2020.



Kenneth E. Hedge
Kenneth E. Hedge, County Surveyor

James S. Swift
James S. Swift, IN LS 20200054
June 17, 2020

Jefferson Township



SECTION CORNER RECORD

NW 000-1000

BOONE COUNTY SURVEYOR'S OFFICE

State Plane grid coordinates NAD83 (2011):

Corner 1: North: 1745562.22 East: 3071932.64 (U.S. survey feet)

Corner 2: North: 1745562.24 East: 3071959.04 (U.S. survey feet)

Type of monument: Harrison, 4" disk 'Section Corner'

Depth: Six inches below adjacent road surface

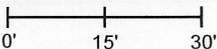
Indiana tie card references:

IN02_T19NR2W33_72 IN02_T19NR2W32_80

IN02_T18NR2W05_08 IN02_T18NR2W04_00

CORNER WITNESS DETAIL

SCALE 1" = 30'



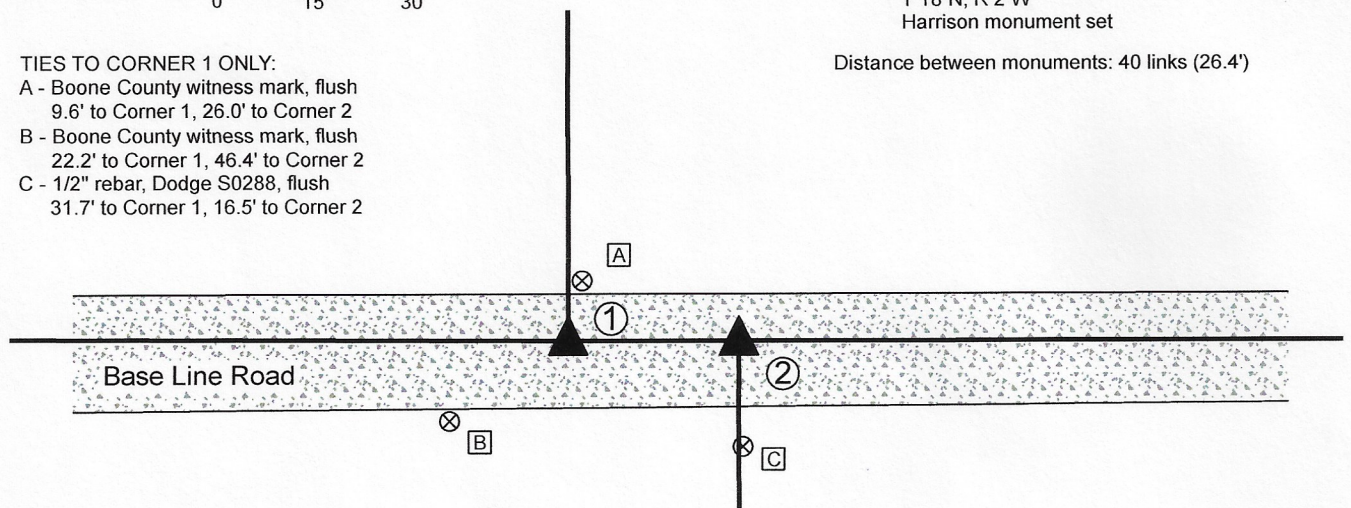
TIES TO CORNER 1 ONLY:

- A - Boone County witness mark, flush
9.6' to Corner 1, 26.0' to Corner 2
- B - Boone County witness mark, flush
22.2' to Corner 1, 46.4' to Corner 2
- C - 1/2" rebar, Dodge S0288, flush
31.7' to Corner 1, 16.5' to Corner 2

① S.E. Corner, Section 32
S.W. Corner, Section 33
T 19 N, R 2 W
Harrison monument set

② N.E. Corner, Section 5
N.W. Corner, Section 4
T 18 N, R 2 W
Harrison monument set

Distance between monuments: 40 links (26.4')

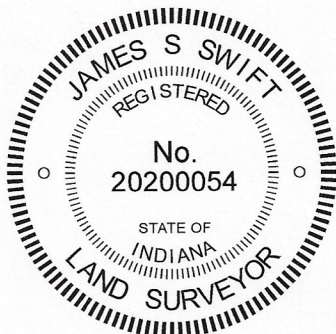


The Harrison monument at Corner 1 was set in place of a stone found. The position of Corner 2 is 26.4 feet (40 links) east of Corner 1. The final position of Corner 2 will be established on the township line after the standard corner to the east (NW 000-950) is determined and monumented.


A BCS record of 1857 shows corner 2 as "set post." No specific descriptions of Corner 1 were found in the BCS Surveyor's Record beyond the original establishment of the corner as a wood post in 1819. Corner 1 is noted as the terminal point for measurements in an entry of 1867, indicating that some monument was likely present from which to measure at that time.

A BCS tie card dated October 16, 1969 states "No stone. RRR set." The tie card is referenced to Corner 2 but it is believed that the railroad rail was set at that time at Corner 1. A BC tie card dated January 18, 1994 shows a railroad spike at Corner 2, 26.4 feet east of Corner 1. The 1994 tie card demonstrates that, at that time, existing north-south fences existing to the north of Corner 1 and to the south of Corner 2.

Both of these corners were excavated on January 3, 2020. Prior to excavation, a section of railroad rail leaning substantially toward the west was found providing evidence of Corner 1 and broken off piece of steel t-post was found providing evidence of Corner 2. The tops of the two monuments were found at 26.9 feet apart. Excavation revealed a stone found at 4 inches deep, slightly north and west of the railroad rail. The stone was 8 inches E-W by 7 inches N-S by 6 inches tall, embedded in the clay layer below the rather thin road bed. No specific etched marks were observed on the stone. Excavation of an area extending 1 foot east, 5 foot north, 1 foot south and 6 feet west of the piece of steel t-post revealed no further evidence of Corner 2. The found stone was held as marking the position of Corner 1. The stone was removed and replaced with a Harrison monument in the position of the top, center of the stone. The top of the railroad rail, removed during excavation, had been 2.0 feet south and 0.9 foot east of the top, center of the stone. Corner 2 was established on the township line at the record federal closing distance of 40 links east of Corner 1. A Harrison monument was set at this position on June 4, 2020. The broken-off piece of steel t-post, removed during excavation, had been 2.0 feet south and 1.4 feet east of this position.




Kenneth E. Hedge, County Surveyor


James S. Swift, IN LS 20200054
June 17, 2020

Jefferson Township

Section 32 T19N, R2W	Section 33 T19N, R2W
Section 5 T18N, R2W	Section 4 T18N, R2W

SECTION CORNER RECORD

BOONE COUNTY SURVEYOR'S OFFICE

NW 050-900

State Plane grid coordinates NAD83 (2011):
 North: 1748189.77 East: 3077231.97 (U.S. survey feet)

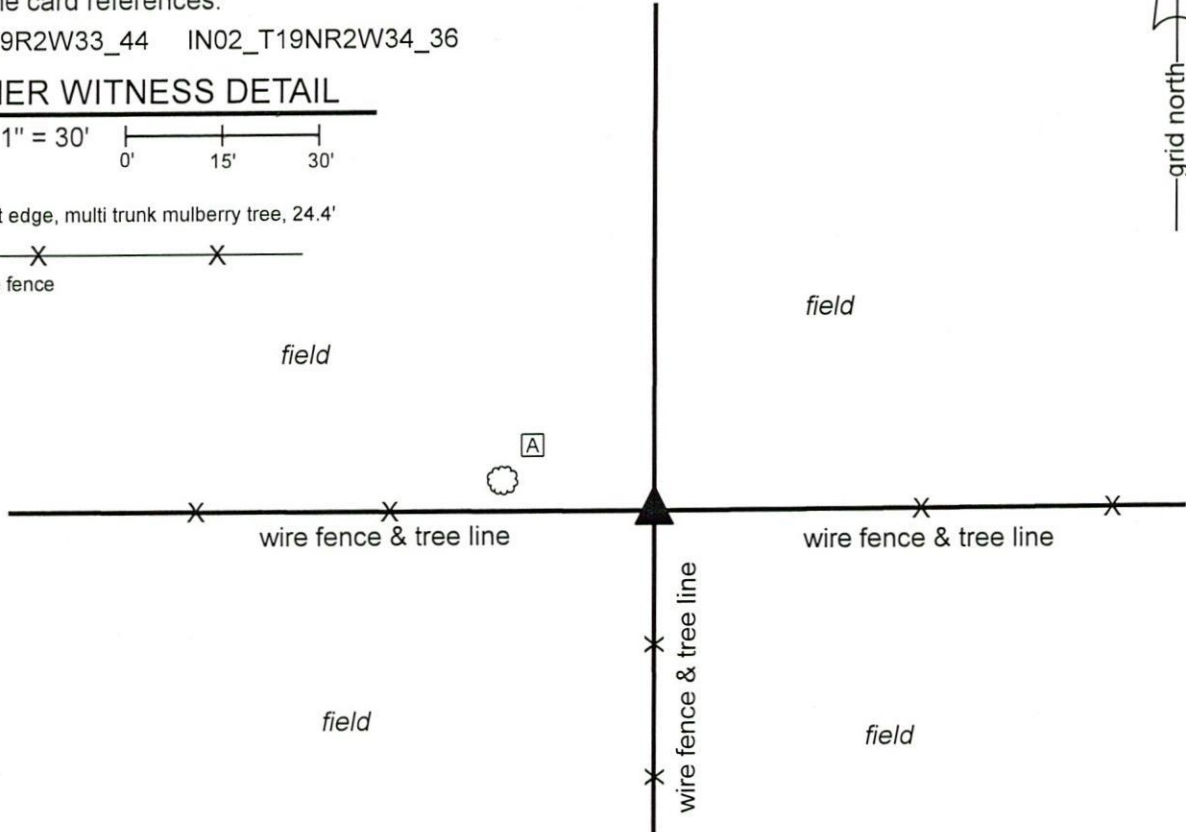
Type of monument: Harrison, 4" disk 'Section Corner'
 Depth: three inches above adjacent ground

Indiana tie card references:
 IN02_T19R2W33_44 IN02_T19NR2W34_36

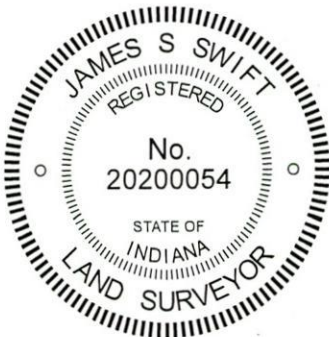
CORNER WITNESS DETAIL

SCALE 1" = 30'

A - east edge, multi trunk mulberry tree, 24.4'
 - Wire fence



The Harrison monument was set in place of a stone found.
 A BCS record dated November 2-3, 1865 states, with respect to this corner, "Reestablished from trees. Set rock 14,7,2 1/2 marked + on E. side." No recent BCS tie cards were found referencing this corner, nor is the corner referenced in recorded surveys.
 Excavation was performed at this corner on December 4-5, 2020. Prior to excavation, no metal monument was found. A metal post and fragments of a wood post were found buried within a large pile of brush and tree limbs. Excavation in the vicinity of the two posts revealed the stone described in the 1865 record at 12 inches deep. The stone was found to be vertical and oriented in cardinal directions, being 14 inches N-S by 2 1/2 inches E-W by 7 inches tall. The stone, as found, appeared to be undisturbed and the position of the stone fit well with evidence of proximate corners to the south, east and west. The stone was removed and an etched "+" mark was observed on the east side, toward the bottom, southerly corner of the stone. The stone was held as marking the corner and a Harrison monument was set in place of the top, center of the stone.
 This corner was originally established as a wood post in 1822.



Kenneth E. Hedge
 Kenneth E. Hedge, County Surveyor

James S. Swift
 James S. Swift, IN LS 20200054
 January 8, 2020

Jefferson Township

Section 33 T19N, R2W	Section 34 T19N, R2W
-------------------------	-------------------------

SECTION CORNER RECORD

NW 050-1000

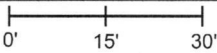
BOONE COUNTY SURVEYOR'S OFFICE

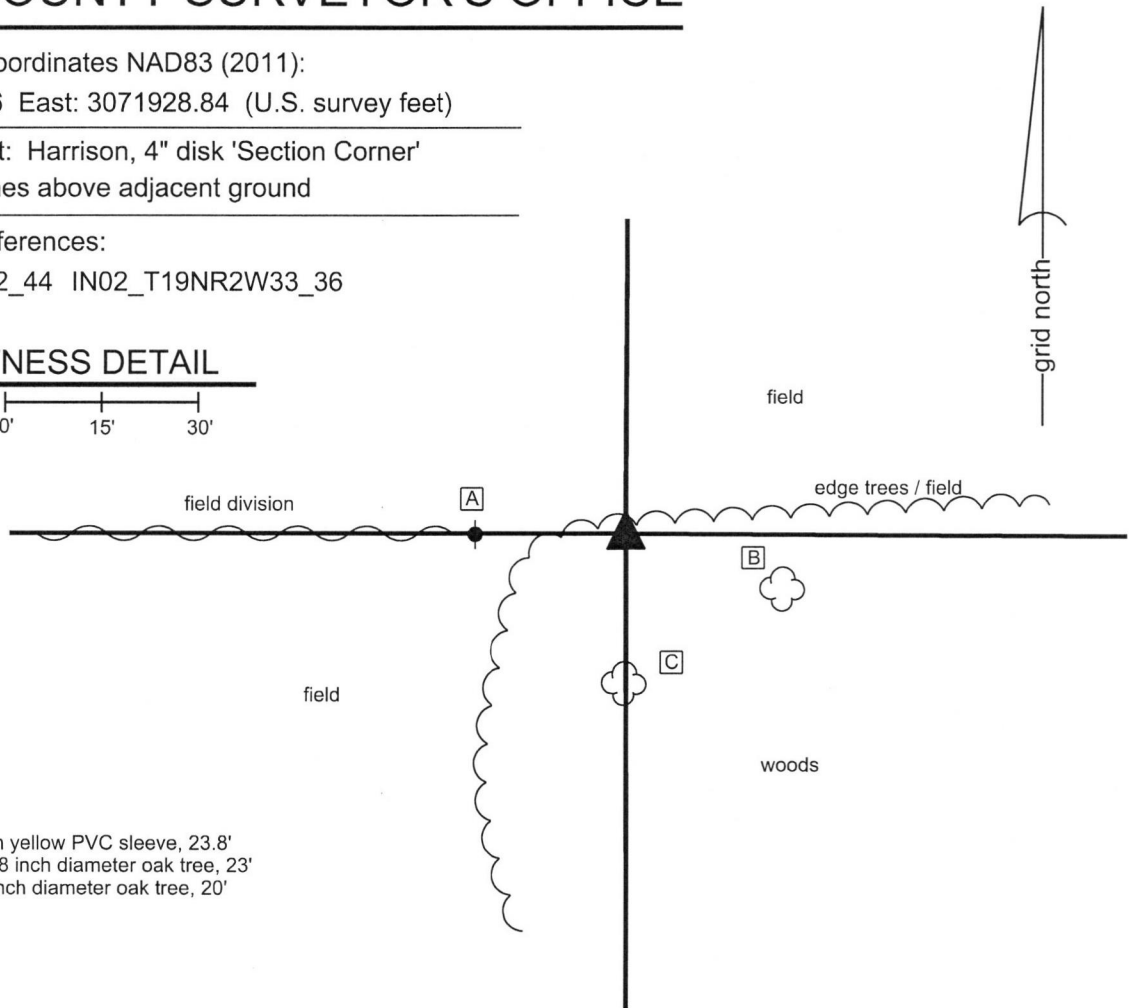
State Plane grid coordinates NAD83 (2011):
North: 1748210.76 East: 3071928.84 (U.S. survey feet)

Type of monument: Harrison, 4" disk 'Section Corner'
Depth: Three inches above adjacent ground

Indiana tie card references:
IN02_T19NR2W32_44 IN02_T19NR2W33_36

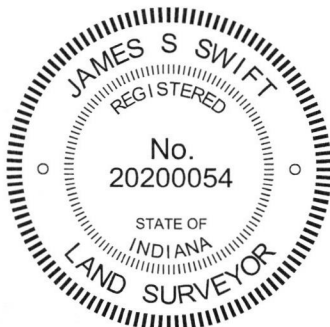
CORNER WITNESS DETAIL

SCALE 1" = 30' 




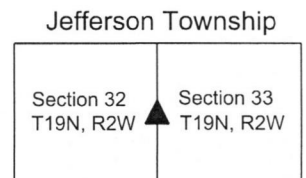
- A - Steel t-post in yellow PVC sleeve, 23.8'
- B - N.W. edge, 48 inch diameter oak tree, 23'
- C - N. edge, 13 inch diameter oak tree, 20'

The Harrison Monument was set in place of a rebar which was set in place of a stone found. No specific descriptions of this corner were found in the BCS Surveyor's Record beyond the original establishment of the corner as a wood post in 1822. No recent BCS tie cards were found referencing the corner. In October, 2013, James Reese Harpel, LS20000203, found a stone which he believed to be marking the corner. He contacted the Boone County Surveyor's Office and I, James Swift, met him at the corner and confirmed that the stone appeared to represent the best evidence of the original position of the corner. The associated survey by Harpel dated October 7, 2013 holds the position of the stone as the corner. On October 16, 2018 the corner was revisited. On this visit, it was apparent that significant disruption has occurred at the corner, as fences have been removed. A rebar bearing the cap of Deckard Engineering (Harpel's company) was found at the corner in the same position as the stone as found in October, 2013. The position of the rebar (formerly stone) fits well with local evidence of the corner in the form of fragments of fence to the south and a field division to the west and fits well with the relative positions of proximate corners. The rebar was held as marking the corner and was replaced with a Harrison monument in the same position on October 16, 2018.




Kenneth E. Hedge, County Surveyor


James S. Swift, IN LS 20200054
November 14, 2018



SECTION CORNER RECORD

NW 100-950

BOONE COUNTY SURVEYOR'S OFFICE

State Plane grid coordinates NAD83 (2011):

North: 1750848.86 East: 3074585.05 (U.S. survey feet)

Type of monument: plug in monument box, INDOT Type B

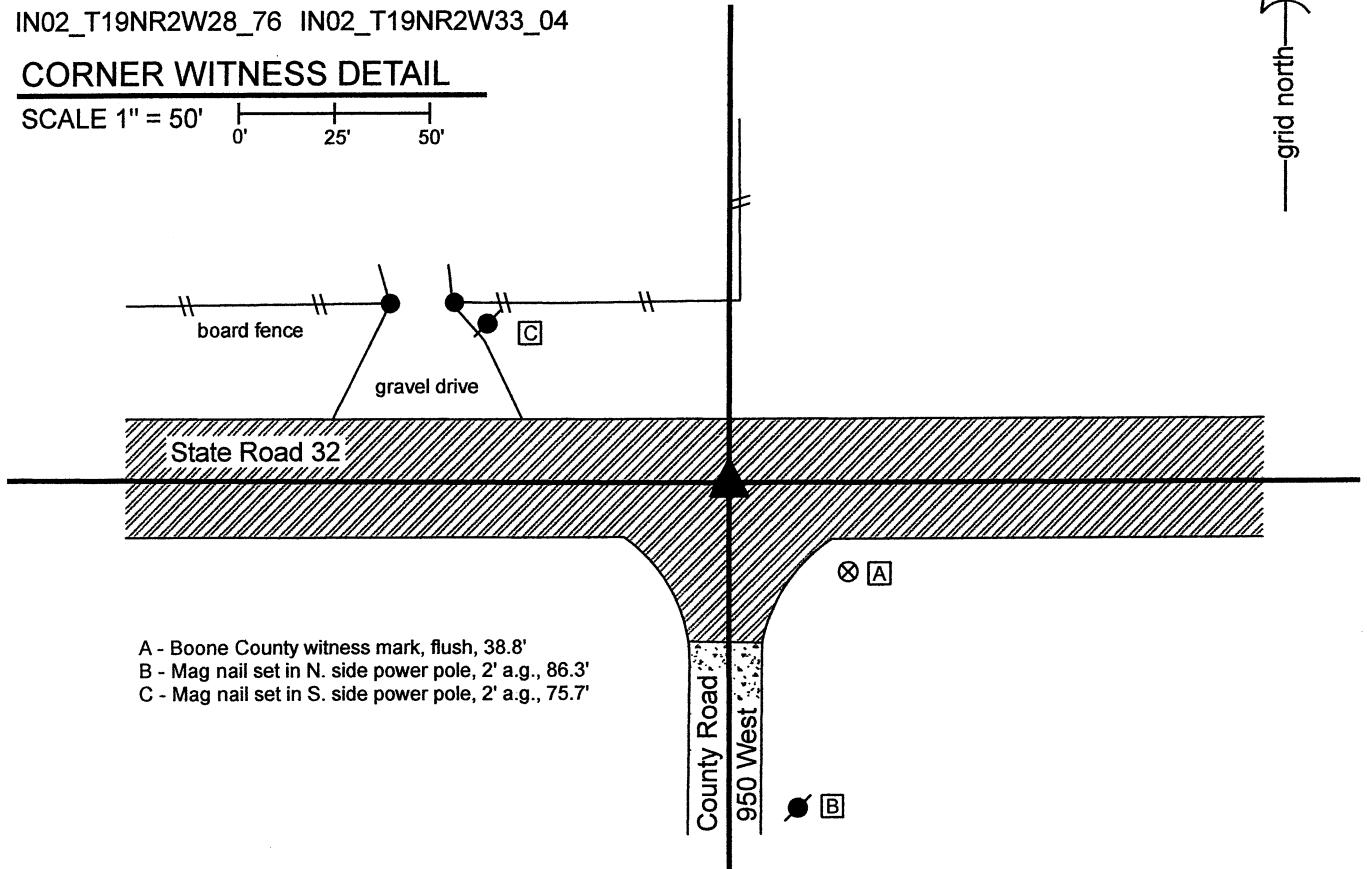
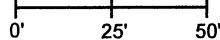
Depth: Flush with adjacent road surface

Indiana tie card references:

IN02_T19NR2W28_76 IN02_T19NR2W33_04

CORNER WITNESS DETAIL

SCALE 1" = 50'



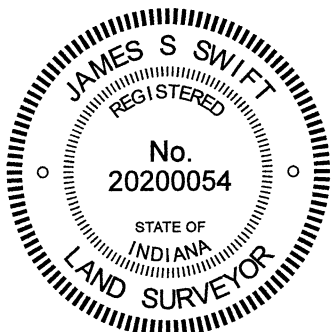
- A - Boone County witness mark, flush, 38.8'
- B - Mag nail set in N. side power pole, 2' a.g., 86.3'
- C - Mag nail set in S. side power pole, 2' a.g., 75.7'

The INDOT Type B Monument was found in place and held as marking the corner.

No specific descriptions of this corner were found in the BCS Surveyor's Record beyond the original establishment of the corner as a wood post in 1822. The corner is listed as the terminal point for measurements in a record of October 17, 1892, indicating that some monument was present at that time from which to measure. No recent BCS tie cards were found referencing the corner.

A Survey Monument Replacement Surveyor's Report recorded as Instrument 200700005107 in the Office of the Boone County Recorder indicates that between May 2006 and May 2007 an existing monument, not identified, was replaced with a Type B monument. The report notes that the new monument was set 0.06 foot SE of the previous monument.

No excavation was performed at this corner, as it falls in State Road 32. The Type B monument is located at the approximate intersection the centers of the east-west state road and County Road 950 West. The monument was accepted as the best available evidence of the corner.



Kenneth E. Hedge
Kenneth E. Hedge, County Surveyor

James S. Swift
James S. Swift, IN LS 20200054

June 16, 2021

Jefferson
Township

Section 28
T19N, R2W

Section 33
T19N, R2W

SECTION CORNER RECORD

BOONE COUNTY SURVEYOR'S OFFICE

NW 100-1000

State Plane grid coordinates NAD83 (2011):
 North: 1750865.98 East: 3071941.75 (U.S. survey feet)

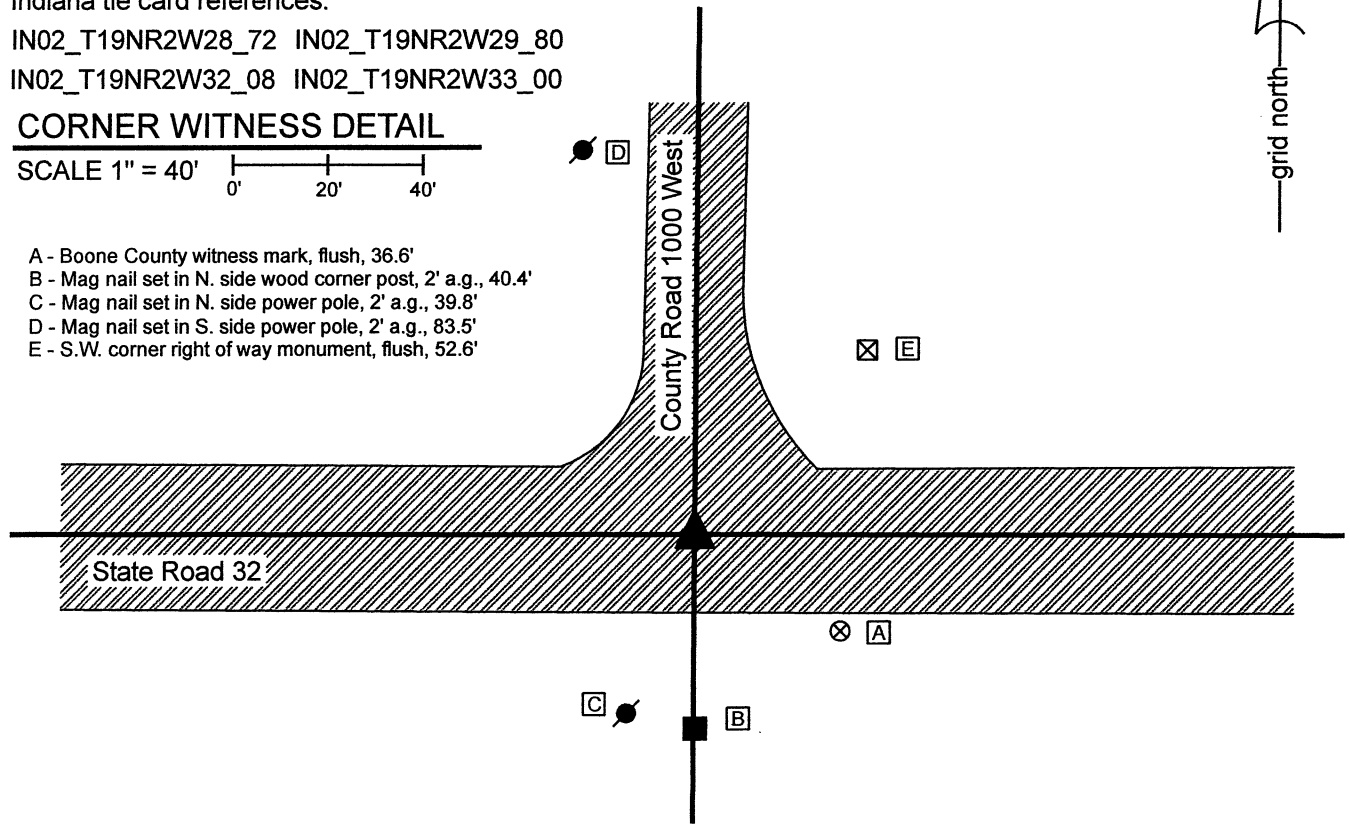
Type of monument: plug in monument box, INDOT Type B
 Depth: Flush with adjacent road surface

Indiana tie card references:
 IN02_T19NR2W28_72 IN02_T19NR2W29_80
 IN02_T19NR2W32_08 IN02_T19NR2W33_00

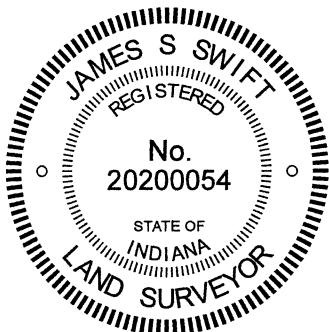
CORNER WITNESS DETAIL

SCALE 1" = 40'

- A - Boone County witness mark, flush, 36.6'
- B - Mag nail set in N. side wood corner post, 2' a.g., 40.4'
- C - Mag nail set in N. side power pole, 2' a.g., 39.8'
- D - Mag nail set in S. side power pole, 2' a.g., 83.5'
- E - S.W. corner right of way monument, flush, 52.6'



The INDOT Type B Monument was found in place and held as marking the corner.
 No specific references to this corner were found in the BCS Surveyor's Record beyond the original establishment of the corner as a wood post in 1822. No recent BCS tie cards were found referencing this corner.
 A Survey Monument Replacement Surveyor's Report recorded as Instrument 200700005107 in the Office of the Boone County Recorder indicates that between May 2006 and May 2007 an existing monument, not identified, was replaced with a Type B monument. The report notes that the new monument was set 0.04 foot SE of the previous monument.
 No excavation was performed at this corner, as it falls in State Road 32. The Type B monument is located at the approximate intersection the centers of the east-west state road and County Road 1000 West. The monument was accepted as the best available evidence of the corner.



Kenneth E. Hedge
 Kenneth E. Hedge, County Surveyor

James S. Swift
 James S. Swift, IN LS 20200054
 June 16, 2021

Jefferson Township

Section 29 T19N, R2W	Section 28 T19N, R2W
Section 32 T19N, R2W	Section 33 T19N, R2W

An arrow points to the intersection of Section 28 and Section 33.