

SECTION CORNER RECORD

NE 000-200

BOONE COUNTY SURVEYOR'S OFFICE

State Plane grid coordinates NAD83 (2011):

Corner 1: North: 1745656.21 East: 3135153.46 (U.S. survey feet)

Corner 2: North: 1745656.68 East: 3135181.10 (U.S. survey feet)

Type of monuments: 1 inch diameter iron pin (rebar) in concrete

Depth: flush with adjacent surface

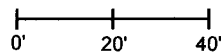
Indiana tie card references:

IN02_T18NR1E05_08 IN02_T18NR1E04_00

IN02_T19NR1E32_80 IN02_T19NR1E33_72

CORNER WITNESS DETAIL

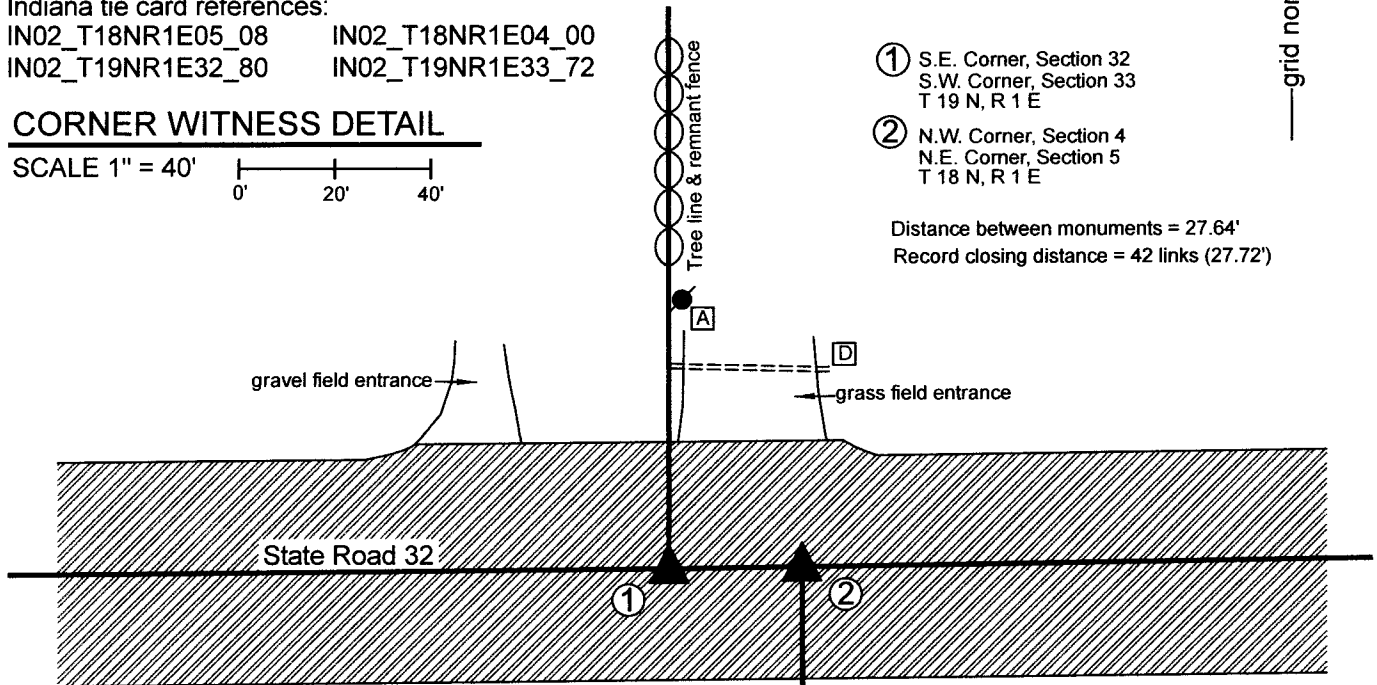
SCALE 1" = 40'



① S.E. Corner, Section 32
S.W. Corner, Section 33
T 19 N, R 1 E

② N.W. Corner, Section 4
N.E. Corner, Section 5
T 18 N, R 1 E

Distance between monuments = 27.64'
Record closing distance = 42 links (27.72')



A - Mag nail in S. side power pole, 2' a.g.

56.1' to corner 1, 71.6' to corner 2

B - Boone County witness mark, flush

74.6' to corner 1, 51.3' to corner 2

C - Boone County witness mark, flush

33.9' to corner 1, 34.9' to corner 2

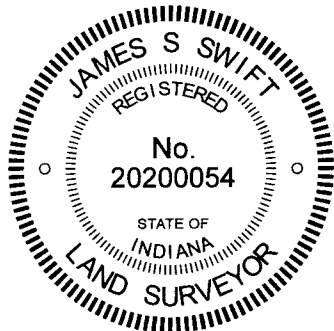
D - East end, CMP culvert, top

53.2' to corner 1, 41.4' to corner 2

Boone County witness mark is a 3/8" diameter x 2' long rebar bearing a metal cap stamped "Boone County Witness Point."

The iron pins in concrete were found in place and held as marking the respective corners.

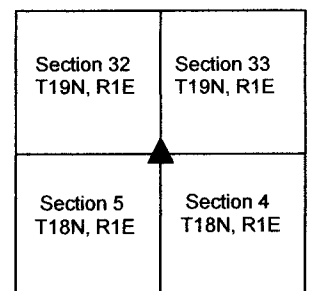
Corner 1 was established as a wood post in 1819. Corner 2 was established as a wood post, 42 links east of Corner 1, in 1820. No specific descriptions of these corners were found in the BCS Surveyor's Record beyond the original establishment of the corners as wood posts. A BCS tie card dated July 27, 2005 shows the corners as 'iron pins in concrete.' A Location Control Route Survey recorded as Instrument 0201777 in the office of the Boone County Recorder also shows the corners as iron pins in concrete. The found monuments match the description and positions of the BCS tie card and the INDOT Route survey. Corner 1 falls at the southerly prolongation of a tree line with intermittent fence. Corner 2 falls approximately 42 links east of Corner 1, in agreement with the 1820 federal field notes. No excavation was performed as these corners fall in a state road. The iron pins in concrete were held as marking the respective corners.



Kenneth E. Hedge
Kenneth E. Hedge, County Surveyor

James S. Swift
James S. Swift, IN LS 20200054
September 28, 2020

Center Township



SECTION CORNER RECORD

NE 000-250

BOONE COUNTY SURVEYOR'S OFFICE

State Plane grid coordinates NAD83 (2011):

Corner 1: North: 1745690.59 East: 3137805.56 (U.S. survey feet)

Corner 1: North: 1745690.85 East: 3137825.39 (U.S. survey feet)

Type of monument: Corner 1: Iron pin (rebar) in concrete, Corner 2: Mag Nail

Depth: flush with adjacent road surface

Indiana tie card references:

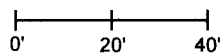
IN02_T18NR1E04_04

IN02_T19NR1E33_76



CORNER WITNESS DETAIL

SCALE 1" = 40'



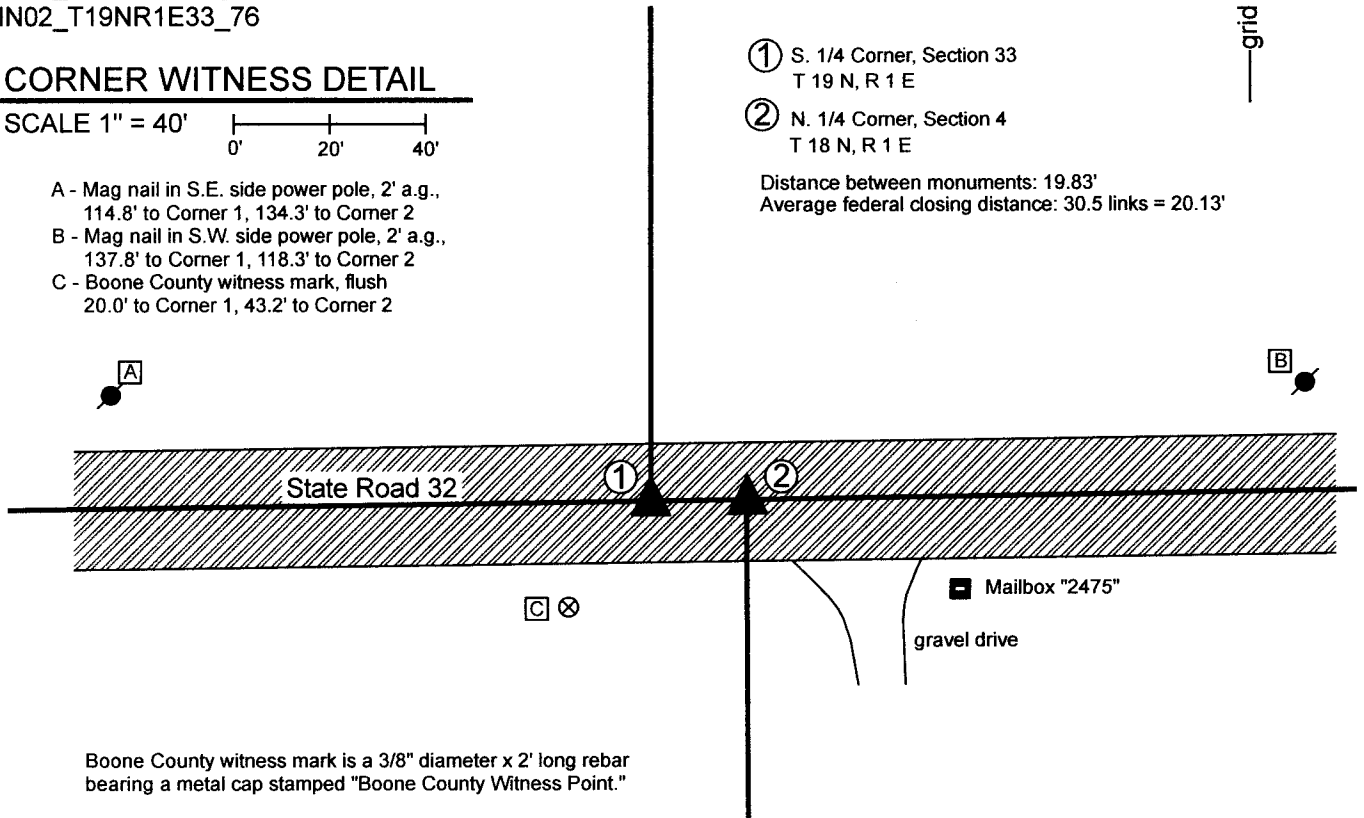
- A - Mag nail in S.E. side power pole, 2' a.g., 114.8' to Corner 1, 134.3' to Corner 2
- B - Mag nail in S.W. side power pole, 2' a.g., 137.8' to Corner 1, 118.3' to Corner 2
- C - Boone County witness mark, flush 20.0' to Corner 1, 43.2' to Corner 2

① S. 1/4 Corner, Section 33
T 19 N, R 1 E

② N. 1/4 Corner, Section 4
T 18 N, R 1 E

Distance between monuments: 19.83'

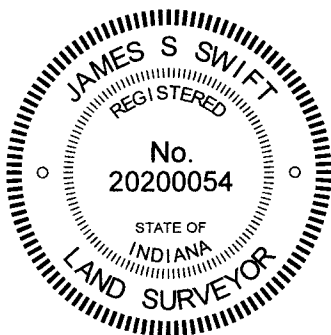
Average federal closing distance: 30.5 links = 20.13'



Boone County witness mark is a 3/8" diameter x 2' long rebar bearing a metal cap stamped "Boone County Witness Point."

The iron pin in concrete marking Corner 1 was found in place and held as marking the corner. The Mag nail marking Corner 2 was set per a 2005 BCS tie card.

Corner 1 was originally established as a wood post in 1819. Corner 2 is not an original federal corner. No specific descriptions of these corners were found in the BCS Surveyor's record beyond the original establishment of Corner 1. The monument marking corner 1 is shown on a Location Control Route Survey recorded as Instrument 0201777 in the Office of the Boone County Recorder. This position is believed to be the same position as that of a railroad spike shown on a BCS tie card dated January 18, 1994. A BCS tie card dated December 21, 2005 shows the iron pin marking Corner 1 and also shows a Mag Nail as marking Corner 2 at a point 19.83 feet east the iron pin at Corner 1. That nail has been removed during previous road work. It is noted that the average of the closing distances reported by the original federal surveyors at the northeast and northwest corners of Section 4 is 30.5 links, or 20.13 feet. The 2005 tie card shows two corners at 19.83 feet apart. This distance was held and Corner 2 was established on the line connecting Corner 1 and the southeast corner of Section 33 at 19.83 feet. No excavation was performed at these corners as they fall in a state road.



Kenneth E. Hedge
Kenneth E. Hedge, County Surveyor

James S. Swift
James S. Swift, IN LS 20200054

October 4, 2022 (Rev. Oct. 11, 2022)

Center
Township

Section 33
T19N, R1E

Section 4
T18N, R1E

SECTION CORNER RECORD

NE 000-300

BOONE COUNTY SURVEYOR'S OFFICE

State Plane grid coordinates NAD83 (2011):

Corner 1: North: 1745726.02 East: 3140457.28 (U.S. survey feet)

Corner 2: North: 1745726.18 East: 3140469.80 (U.S. survey feet)

Type of monuments: 1 inch diameter iron pin (rebar) in concrete

Depth: flush with adjacent road surface

Indiana tie card references:

IN02_T18NR1E03_00 IN02_T18NR1E04_08

IN02_T19NR1E33_80 IN02_T19NR1E34_72

① S.E. Corner, Section 33
S.W. Corner, Section 34
T 19 N, R 1 E

② N.W. Corner, Section 3
N.E. Corner, Section 4
T 19 N, R 1 E

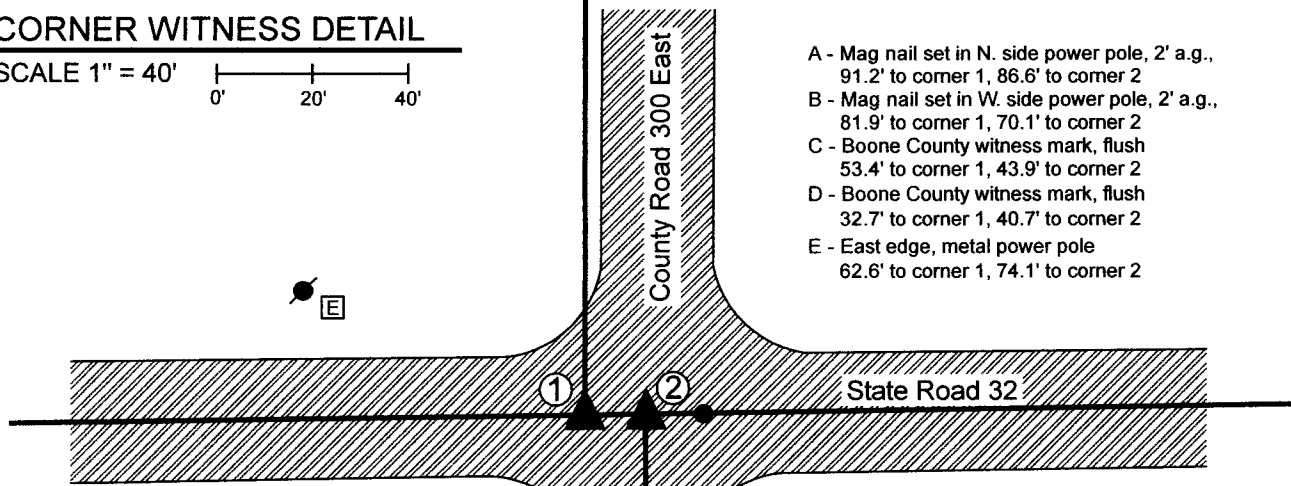
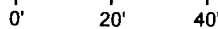
Distance between monuments: 12.52'

Record closing distance: 19 links = 12.54'



CORNER WITNESS DETAIL

SCALE 1" = 40'



- A - Mag nail set in N. side power pole, 2' a.g., 91.2' to corner 1, 86.6' to corner 2
- B - Mag nail set in W. side power pole, 2' a.g., 81.9' to corner 1, 70.1' to corner 2
- C - Boone County witness mark, flush 53.4' to corner 1, 43.9' to corner 2
- D - Boone County witness mark, flush 32.7' to corner 1, 40.7' to corner 2
- E - East edge, metal power pole 62.6' to corner 1, 74.1' to corner 2

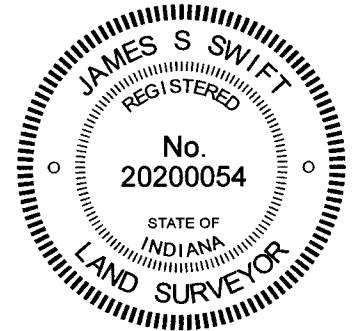
The iron pins in concrete were found in place and held as marking the corners. Corner 1 was originally established as a wood post in 1819. Corner 2 was originally established in 1820 as a wood post 19 links east of Corner 1.

A BCS record dated October 31 & November 1, 1912 calls Corner 1 as 'Rock at Corner.' No specific descriptions of Corner 2 were found in the BCS Surveyor's Record. A BCS tie card dated January 18, 1994 shows both corners as railroad spikes, with Corner 1 west of Corner 2 and generally matching the geometry of the corners as currently monumented, relative to the roadways. A Location Control Route Survey recorded as Instrument 0201777 in the Office of the Boone County Recorder shows both corners as marked by iron pins, with Corner 1 West of Corner 2, and the line between Sections 3 and 4 generally in-line with the center of C.R. 300 East and the line between Sections 33 and 34 as slightly west of C.R. 300 East. The found monuments agree with the positions of the corners as shown on this survey and agree with the relative positions of the corners per the original federal notes, with the closing corner east of the standard corner. It is also noted that, though County Road 300 East does not jog at the township line, as would be expected, a straight line connecting the iron pin at Corner 1 and a Harrison monument at the northeast corner of Section 33 lines up reasonably well with the road along the north half of that line and lines up generally with a Harrison monument marking the east quarter corner of Section 33. It appears that C.R. 300 East jogs slightly to the east as it crosses a large open ditch approximately 2000 feet north of the subject corners.

The found monuments were held as shown on the 1994 BCS tie card and the Route Control Survey. It is noted that BCS tie cards dated September 1, 2005 reverse the positions of the corners, showing Corner 1 as east of Corner 2. No evidence was found to support the idea that these corners are reversed from the orientation noted in the original federal notes.

Another iron pin found 12.2 feet east of Corner 2 is of unknown origin, does not match any of the above-mentioned documents and is not recognized as a section corner.

Boone County witness mark is a 3/8" diameter x 2' long rebar bearing a metal cap stamped "Boone County Witness Point."



Kenneth E. Hedge
Kenneth E. Hedge, County Surveyor

James S. Swift
James S. Swift, IN LS 20200054

September 28, 2022

Center Township

Section 33 T19N, R1E	Section 34 T19N, R1E
Section 4 T18N, R1E	Section 3 T18N, R1E

SECTION CORNER RECORD

NE 000-350

BOONE COUNTY SURVEYOR'S OFFICE

State Plane grid coordinates NAD83 (2011):

Corner 1: North: 1745762.58 East: 3143130.90 (U.S. survey feet)

Corner 2: North: 1745762.63 East: 3143137.29 (U.S. survey feet)

Type of monument: Iron pin (rebar) in concrete

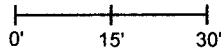
Depth: flush with adjacent road surface

Indiana tie card references:

IN02_T18NR1E03_04 IN02_T19NR1E34_76

CORNER WITNESS DETAIL

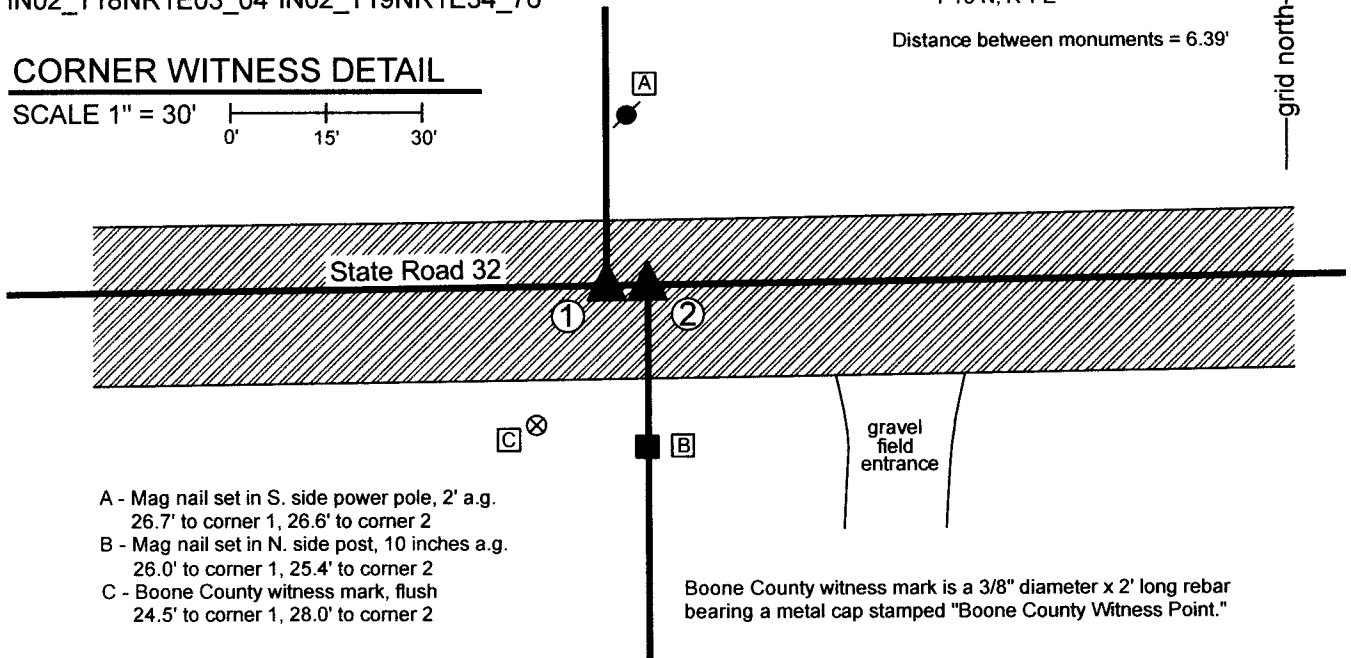
SCALE 1" = 30'



① S. 1/4 Corner, Section 34
T 19 N, R 1 E

② N. 1/4 Corner, Section 3
T 18 N, R 1 E

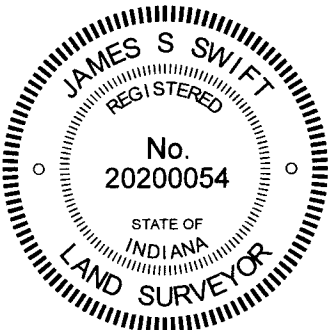
Distance between monuments = 6.39'



- A - Mag nail set in S. side power pole, 2' a.g.
26.7' to corner 1, 26.6' to corner 2
- B - Mag nail set in N. side post, 10 inches a.g.
26.0' to corner 1, 25.4' to corner 2
- C - Boone County witness mark, flush
24.5' to corner 1, 28.0' to corner 2

Boone County witness mark is a 3/8" diameter x 2' long rebar bearing a metal cap stamped "Boone County Witness Point."

The iron pins in concrete were found and held as marking the respective corners. Corner 1 is an original federal corner set as a wood post in 1819. Corner 2 is not an original federal corner. No specific descriptions of these corners were found in the BCS Surveyor's Record, though Corner 1 is shown as a terminal point for measurements on an entry dated 1894 and Corner 2 is shown as a terminal point for measurements on an entry dated 1859. The federal closing distance reported for the northwest corner of Section 3 is 19 links East and the closing distance at the northeast corner of Section 3 is 44 links West. The average closing distance for the north quarter corner of Section 3 would be computed as 12.5 links (8.25 feet) West. However, the relative position of these corners has been reversed from that theoretical computation. Corner 2, as found and held, is 6.39 feet east of Corner 1. Corner 2 is in line with a wood post on the south side of the road and Corner 2 is generally in line with a field division to the north. A BCS tie card dated January 18, 1994 shows Corner 1 as a railroad spike and Corner 2 as a P.K. Nail, with Corner 2 in line with a wood post on the south side of S.R. 32 and Corner 1 west thereof. A Location Control Route Survey recorded as Instrument 0201777 in the Office of the Boone County Recorder shows both corners as iron pins found, with Corner 2 shown 6.38 feet east of Corner 1, generally matching the representation of the 1994 tie card. This relative geometry is also shown on a survey recorded as Instrument 9806375, Boone County Recorder. The position of the iron pin found marking Corner 2 matches the distances shown on that survey, relative to the iron pin marking the northwest corner of Section 3, as well as a survey recorded as Instrument 0205130. Also, the Doerr property (Instrument 2018009778) in the northeast quarter of Section 3 was clearly measured from the position of the iron pin marking Corner 2. Analysis of properties in Section 34 indicate that the position of the iron pin marking Corner 1 works much better than would a position further east. Hence, though reversed from the expected orientation, the two iron pins fit with the 1994 tie card, previous surveys, and deeds tied to these corners. However, a set of BCS tie card dated July 27, 2005 shows Corner 1 as east of Corner 2. This does not match all of the other evidence noted and an error is also noted on these documents, as they show the wood post on the south side of the road being in-line with the westerly of the two corners, which it is clearly not. Hence, the 2005 tie cards are considered erroneous and the positions of the corners are held as shown hereon. No excavation was performed at these corners as they fall in a state road.



Kenneth E. Hedge
Kenneth E. Hedge, County Surveyor

James S. Swift
James S. Swift, IN LS 20200054

October 4, 2022

Center Township

Section 34
T19N, R1E



Section 3
T18N, R1E

SECTION CORNER RECORD

BOONE COUNTY SURVEYOR'S OFFICE

NE 100-200

State Plane grid coordinates NAD83 (CORS96):
 North: 1750931.27 East: 3135138.96 (U.S. survey feet)

Type of monument: Harrison, 4" disk 'Section Corner'
 Depth: six inches below adjacent gravel road surface

Indiana tie card references:
 IN02_T19NR1E29_80 IN02_T19NR1E28_72
 IN02_T19NR1E32_08 IN02_T19NR1E33_00

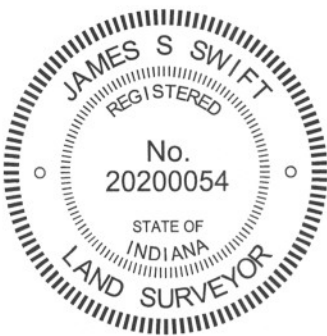
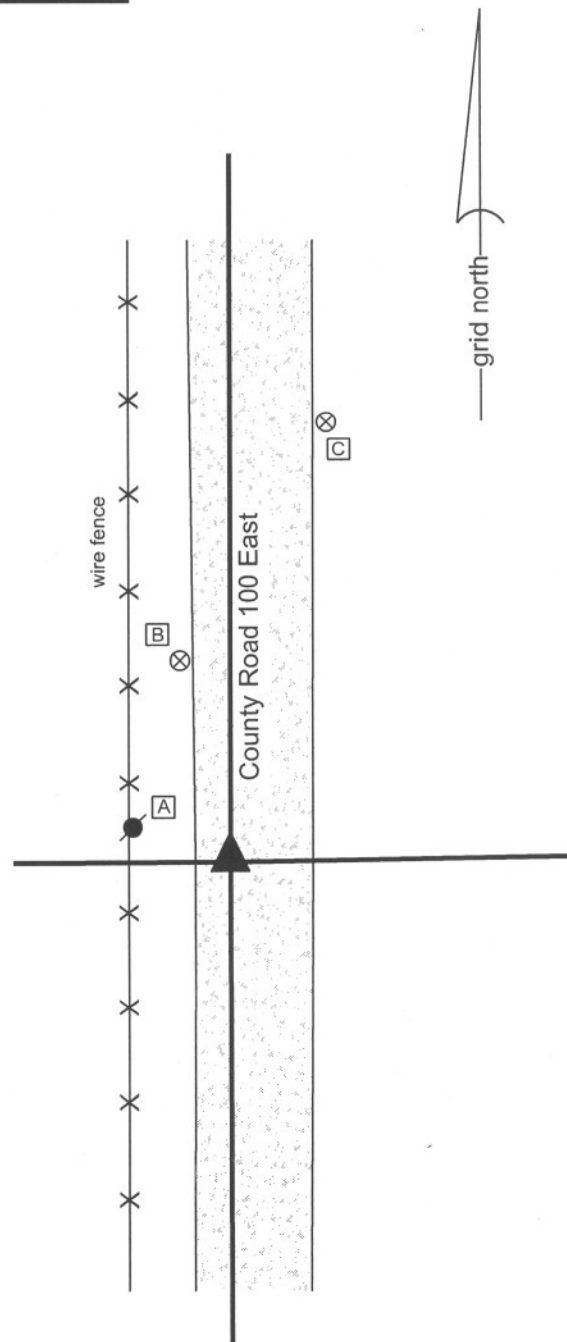
CORNER WITNESS DETAIL

SCALE 1" = 30'

- A - Mag nail set in W. side power pole, 2' a.g., 14.60'
- B - Boone County witness mark, flush, 32.15'
- C - Boone County witness mark, flush, 70.40'

Boone County witness mark is a 3/8" diameter x 2' long rebar bearing a metal cap stamped "Boone County Witness Point."

The harrison monument was set in place of a stone found and directly over a vertical section of clay tile found.
 A BCS Record dated April 1, 1893 states "Found from Walnut Stump, Red Oak (about 3 links further than call). Set rock mark + 22.10.10 at corner. 4 inch tile filled with sand and gravel under." A BCS tie card dated August 1, 2005 shows the corner as a harrison monument with no documentation of source.
 This corner was excavated on June 20, 2012. Prior to excavation a harrison monument was found at 1-1/2 inches below grade, the position of which agrees with the 2005 distance ties. Excavation revealed the record stone found at 2 inches below grade. The stone is leaning slightly WNW. As stood up top of the stone was at the surface of the gravel road. The top of the stone measures 8 inches N-S by 8 inches E-W. The stone was well embedded in the clay layer below the road bed, protruding approximately 6 inches out of the clay, which depth represents the entire thickness of the existing road bed. The stone was removed and found to measure 10 inches by 10 inches by 20 inches tall, in agreement with the 1893 record. No specific marking were detected on the stone. Directly below the stone, the top of a vertical piece of 4 inch diameter clay tile was found, also in agreement with the 1893 record. The tile was left in place and a harrison monument was set over it, in place of the stone.
 The harrison monument documented on the 2005 tie card was removed during excavation. This monument had been 1.4 feet east and 3.1 feet north of the stone and clay tile.
 This corner was originally established as a wood post in June, 1822.



Kenneth E. Hedge
 Kenneth E. Hedge, County Surveyor

James S. Swift
 James S. Swift, IN LS 20200054
 January 15, 2013

Center Township

Section 29 T19N, R1E	Section 28 T19N, R1E
Section 32 T19N, R1E	Section 33 T19N, R1E

PHOTOGRAPHIC DOCUMENTATION

Date of photography: June 20, 2012

The stone as originally found leaning.
View from the east.



The stone stood up.
View from the east.



The stone stood up.
View from the north.



Top of the piece of tile from above.



For details and documentation, refer to related sheet "Section Corner Record."

SECTION CORNER RECORD

NE 100-250

BOONE COUNTY SURVEYOR'S OFFICE

State Plane grid coordinates NAD83 (2011):

North: 1750967.04 East: 3137789.54 (U.S. survey feet)

Type of monument: Harrison, 4" disk 'Section Corner'

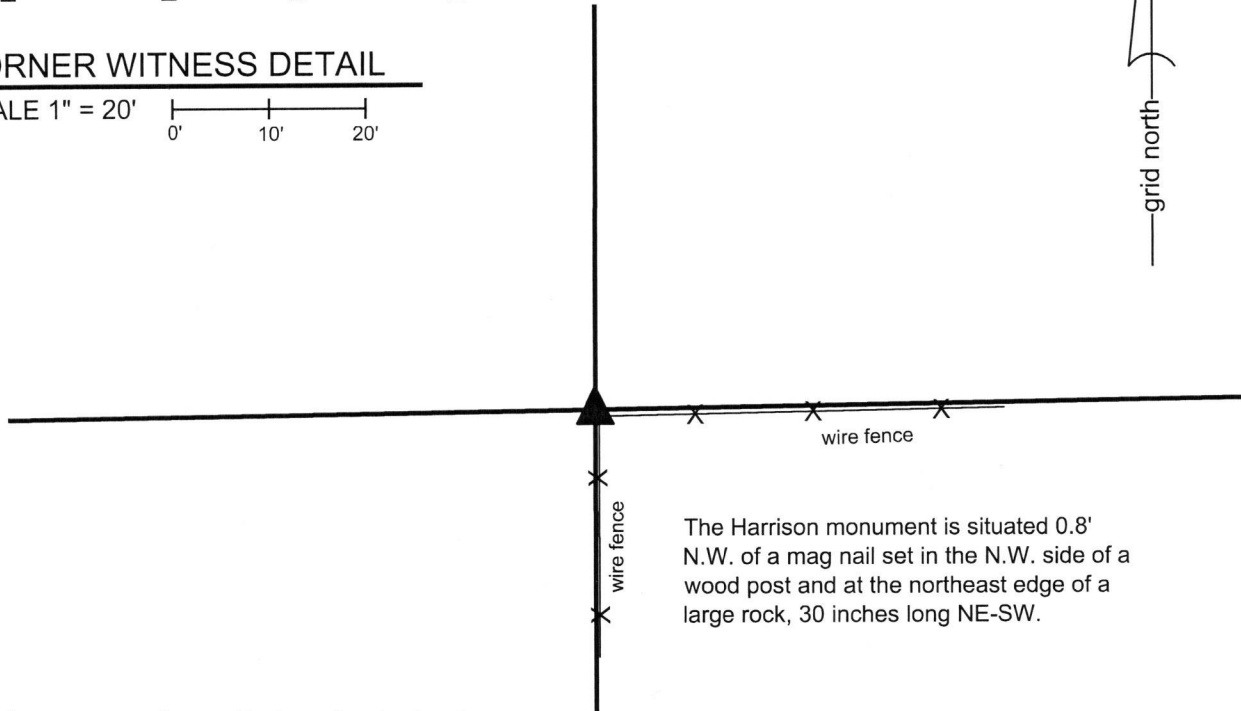
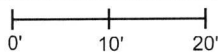
Depth: Two inches above adjacent ground

Indiana tie card references:

IN02_T19NR1E28_76 IN02_T19NR1E33_04

CORNER WITNESS DETAIL

SCALE 1" = 20'



The Harrison monument is situated 0.8' N.W. of a mag nail set in the N.W. side of a wood post and at the northeast edge of a large rock, 30 inches long NE-SW.

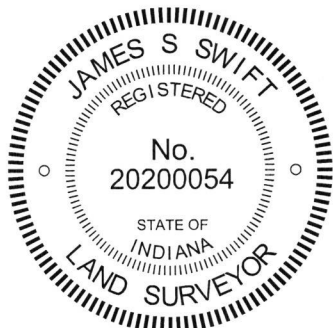
The Harrison monnuument was set in place of a rebar found.

A BCS record of April 1, 1893 states, with respect to this corner, "Rock here claimed by some as being the correct corner and doubted by others but after running the line from North as found from bearing trees at both corners concluded that it is the same from which the subdivision was made and recognize it as the original corner."

A BCS tie card dated January 18, 1994 shows the corner as a rebar with cap at the northwest edge of a corner post.

This corner was monumented on November 1, 2017. The rebar shown on the 1994 corner was found at the northwest edge of a post, as shown on the tie card, bearing a yellow plastic cap stamped 'Dodge SO288.' The corner post is not ancient and is leaning substantially towards the southeast. Many rocks were found around and in the immediate vicinity of the corner post. The 1893 record is not specific about the dimensions of the rock accepted at that time as being the corner. Given the substantial amount of rocks found at the corner, it is not possible to determine which of those rocks might represent the corner as held in 1893. It is noted that the measurements included with the 1893 record show unequal distances to the section corners to the east and west. Applying the standard scale factor of 1.00415 (used throughout the county for measurements reported between 1860 and 1895) to the 1893 measurements, the distance to the section corner to the east nearly exactly matches the 1893 record and the distance to the section corner to the west is 2 feet short of the 1893 distance. Hence, uncertainties of approximately 2 feet east-west are associated with the position of the found rebar and the 1893 record. This is considered a minimal uncertainty with respect to such an old record and the near match of the respective, imbalanced distances is considered confirmation that the position of the rebar closely matches the position of the corner as determined in 1893. As noted, however, the rock described in the 1893 record was not identified. The rebar was held as marking the corner. The rebar was removed and replaced with a Harrison monument in the same position.

This corner was originally established as a wood post in 1821.



Kenneth E. Hedge
 Kenneth E. Hedge, County Surveyor

James S. Swift
 James S. Swift, IN LS 20200054
 November 21, 2017

Center Twp

Section 28
T19N, R1E

▲
 Section 33
 T19N, R1E

SECTION CORNER RECORD

NE 100-300

BOONE COUNTY SURVEYOR'S OFFICE

State Plane grid coordinates NAD83 (CORS96):

North: 1751007.27 East: 3140451.53 (U.S. survey feet)

Type of monument: Harrison, 4" disk 'Section Corner'

Depth: One inch below adjacent road surface

Indiana tie card references:

IN02_T19NR1E27_72

IN02_T19NR1E28_80

IN02_T19NR1E33_08

IN02_T19NR1E34_00

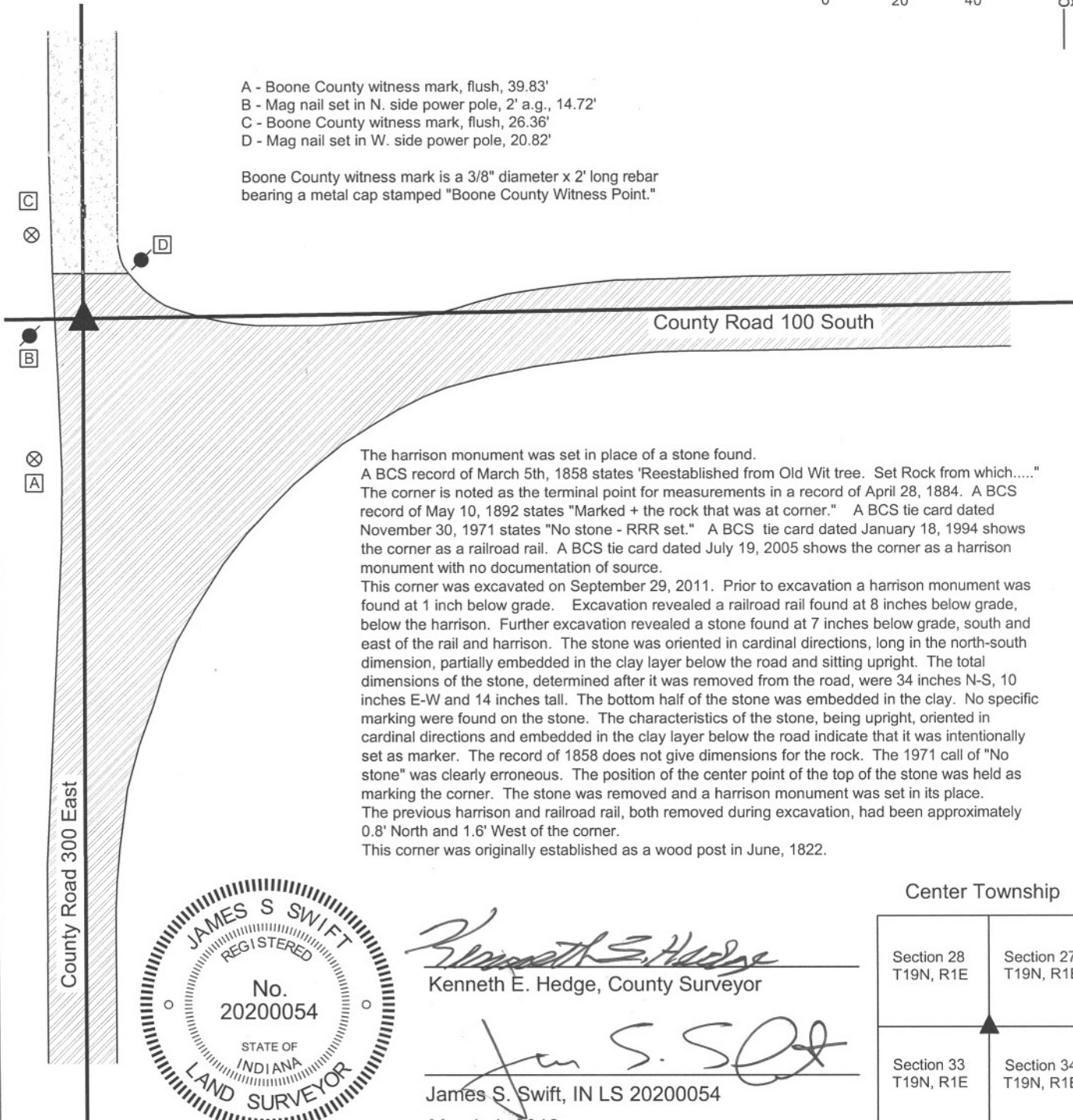
CORNER WITNESS DETAIL

SCALE 1" = 40'



- A - Boone County witness mark, flush, 39.83'
- B - Mag nail set in N. side power pole, 2' a.g., 14.72'
- C - Boone County witness mark, flush, 26.36'
- D - Mag nail set in W. side power pole, 20.82'

Boone County witness mark is a 3/8" diameter x 2' long rebar bearing a metal cap stamped "Boone County Witness Point."

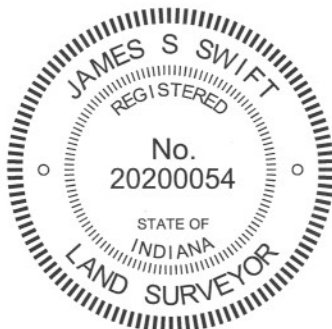


The harrison monument was set in place of a stone found.

A BCS record of March 5th, 1858 states "Reestablished from Old Wit tree. Set Rock from which....." The corner is noted as the terminal point for measurements in a record of April 28, 1884. A BCS record of May 10, 1892 states "Marked + the rock that was at corner." A BCS tie card dated November 30, 1971 states "No stone - RRR set." A BCS tie card dated January 18, 1994 shows the corner as a railroad rail. A BCS tie card dated July 19, 2005 shows the corner as a harrison monument with no documentation of source.

This corner was excavated on September 29, 2011. Prior to excavation a harrison monument was found at 1 inch below grade. Excavation revealed a railroad rail found at 8 inches below grade, below the harrison. Further excavation revealed a stone found at 7 inches below grade, south and east of the rail and harrison. The stone was oriented in cardinal directions, long in the north-south dimension, partially embedded in the clay layer below the road and sitting upright. The total dimensions of the stone, determined after it was removed from the road, were 34 inches N-S, 10 inches E-W and 14 inches tall. The bottom half of the stone was embedded in the clay. No specific marking were found on the stone. The characteristics of the stone, being upright, oriented in cardinal directions and embedded in the clay layer below the road indicate that it was intentionally set as marker. The record of 1858 does not give dimensions for the rock. The 1971 call of "No stone" was clearly erroneous. The position of the center point of the top of the stone was held as marking the corner. The stone was removed and a harrison monument was set in its place. The previous harrison and railroad rail, both removed during excavation, had been approximately 0.8' North and 1.6' West of the corner.

This corner was originally established as a wood post in June, 1822.



Kenneth E. Hedge
 Kenneth E. Hedge, County Surveyor

James S. Swift
 James S. Swift, IN LS 20200054
 March 1, 2012

Center Township

Section 28 T19N, R1E	Section 27 T19N, R1E
Section 33 T19N, R1E	Section 34 T19N, R1E

PHOTOGRAPHIC DOCUMENTATION

Date of photography: September 29, 2011

View of the stone as first exposed.



View of the stone with more exposed.



View of the stone from the west, looking down county Road 100 North from the intersection.



For details and documentation, refer to related sheet "Section Corner Record."