

SECTION CORNER RECORD

BOONE COUNTY SURVEYOR'S OFFICE

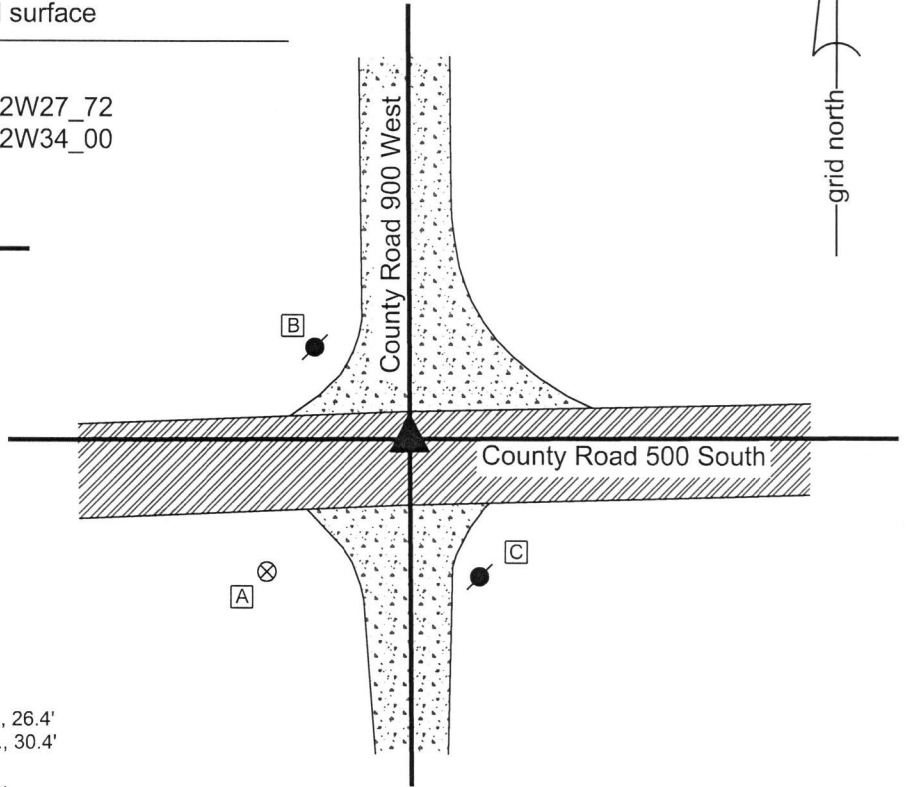
SW 500-900

State Plane grid coordinates NAD83 (2011):
 North: 1718883.32 East: 3077353.15 (U.S. survey feet)

Type of monument: Harrison, 4" disk 'Section Corner'
 Depth: One inch below adjacent road surface

Indiana tie card references:
 IN02_T18NR2W28_80 IN02_T18NR2W27_72
 IN02_T18NR2W33_08 IN02_T18NR2W34_00

CORNER WITNESS DETAIL
 SCALE 1" = 40'



- A - Boone County witness mark, flush, 40.6'
- B - Mag nail set in E. side power pole, 2' a.g., 26.4'
- C - Mag nail set in N. side power pole, 2' a.g., 30.4'

The Harrison monument was set over a stone found.

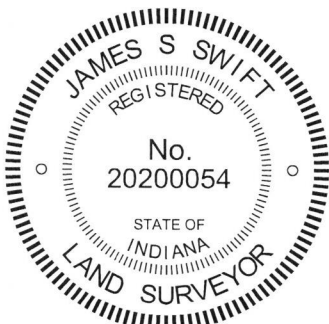
No specific descriptions of this corner were found in the BCS Surveyor's Record. The corner is shown as the terminal point for measurements in several entries, including an entry dated November 13, 1893. This entry pertains to the establishment of the south quarter corner of Section 27, clearly indicating that the quarter corner was set at the midpoint between the southeast and southwest corners of the section. No monument was described for the southwest corner of Section 27, being the subject corner of this documentation sheet, in the 1893 entry. However, it has been observed at numerous other corners throughout Boone County that such measurement references are associated with a stone found at the corner.

A tie card originating from an unknown source, dated January 14, 1980, attributed to "Ken and Tim" with reference to Job 800104 shows the corner as "No stone. Set Brass Rod."

This corner was excavated on September 28, 2018. Prior to excavation, a spike with a steel top and brass shaft was found at the intersection of the two county roads. This is believed to be the monument set in 1980. Also, prior to excavation, an approximate position for the corner was estimated with respect to the overall centerline of the east-west roadway as it exists between the subject corner and the intersection with State Road 75, 1 mile east. This estimated position indicated that the corner held in 1893 could be up to 3 feet north of the found spike. Excavation proved this estimation to be accurate. A stone was found at 21 inches deep, 2.5 feet north of the spike. The stone was embedded in the clay layer below the road bed with the top of the stone protruding 2 inches into the bottom of the road bed. With the top 10 inches of the stone exposed, it measured 15 inches E-W by 11 inches N-S and was clearly larger yet in all dimensions. The high point of the stone was found at the northeast edge of the rock. The stone was clearly set by humans to mark the corner and fit remarkably well with the estimation of the position of the corner with respect to the roadway to the east, in conformity with the 1893 record. The stone was accepted as providing the best available evidence of the corner and a Harrison monument was set directly over the high point of the stone. The brass shafted spike, removed during excavation, had been 2.5 feet south of the stone. It is noted that the sketch from 1980 clearly indicates that no stone was found at the corner, indicating that a stone was searched for but not found.

This corner was originally established as a wood post in 1820.

Jackson Township



Kenneth E. Hedge
 Kenneth E. Hedge, County Surveyor

James S. Swift
 James S. Swift, IN LS 20200054
 October 10, 2018

Section 28 T18N, R2W	Section 27 T18N, R2W
Section 33 T18N, R2W	Section 34 T18N, R2W

An arrow points to the intersection of Section 27 and Section 34.

SECTION CORNER RECORD

BOONE COUNTY SURVEYOR'S OFFICE

SW 500-1000

State Plane grid coordinates NAD83 (2011):
 North: 1718861.47 East: 3072064.70 (U.S. survey feet)

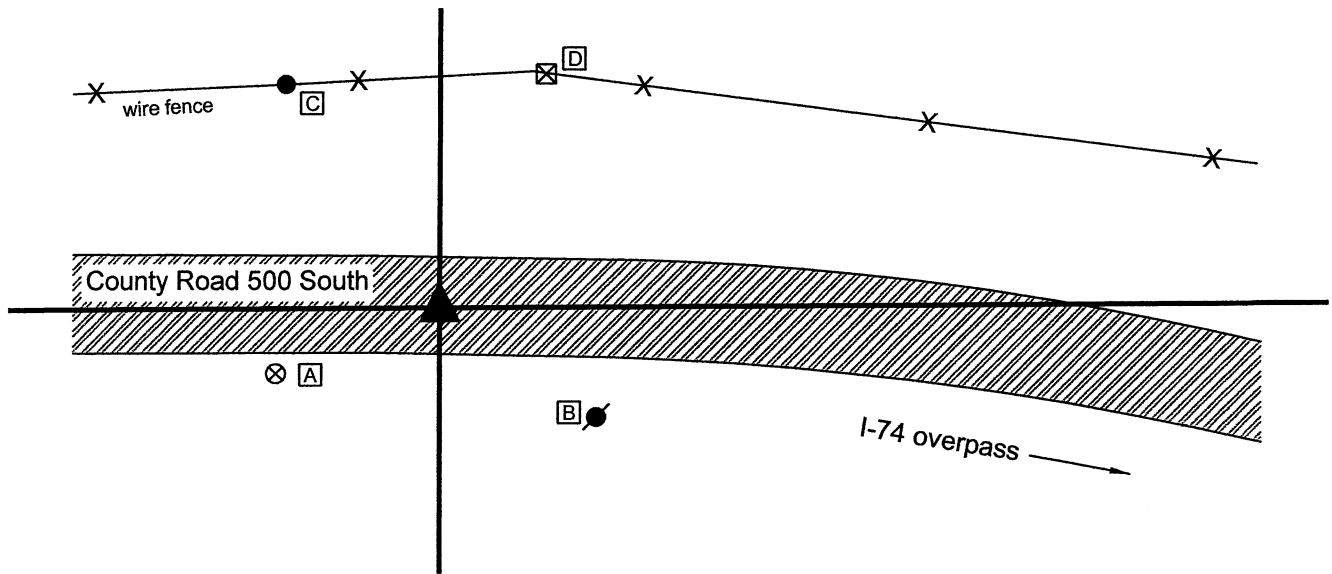
Type of monument: plug in monument box, INDOT 'Type B'
 Depth: Three inches below adjacent road surface

Indiana tie card references:
 IN02_T18NR2W28_72 IN02_T18NR2W29_80
 IN02_T18NR2W32_08 IN02_T18NR2W33_00

CORNER WITNESS DETAIL

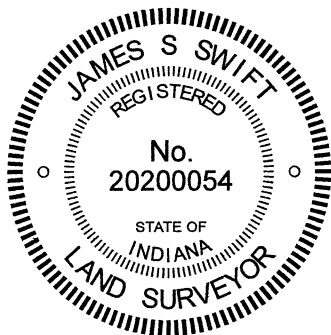
SCALE 1" = 40'

- A - Boone County witness mark, flush, 36.9'
- B - Mag nail set in N. side power pole, 2' a.g., 39.9'
- C - Mag nail set in S. side wood post, 2' a.g., 56.6'
- D - S.W. corner, INDOT ROW marker, flush, 53.4'

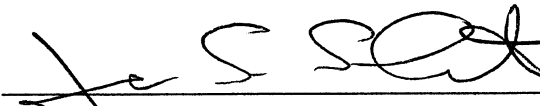


The INDOT Type B Monument was found and held as marking the corner. A BCS record dated April 22, 1870 states, with respect to this corner, "Set Rock 17.16.15 +." No recent BCS tie cards were found referencing the corner. The plans for Interstate 74, as revised February 16, 1974, show the overpass of County Road 500 South over I-74 as project 74-2(33)47. The sheet provided by INDOT is not entirely legible but appears to show the section line crossing County Road 500 South with the label "Monument Required" apparently pointing at the section corner at a point slightly west of a substantial bend in the R/W on the north side of the road. Station data and specifics of the corner are not clear, due to the poor quality of this particular plan sheet. However, it appears that a monument was set to mark the section corner at the time of the construction of the overpass. The position of the found monument appears to agree with the position shown on the plans, though this is not specifically proven due to the lack of legible information. The found monument falls in an area of substantial cut, hence no excavation was performed, due to the fact that any ancient monument such as a stone would have been destroyed when the roadway was cut. It is noted, however, that the found monument agrees remarkably well with the relative positions of adjacent corners. The Type B monument was held as marking the corner.

This corner was originally established as a wood post in 1820.




 Kenneth E. Hedge, County Surveyor


 James S. Swift, IN LS 20200054
 June 16, 2021

Jackson Township

Section 29 T18N, R2W	Section 28 T18N, R2W
Section 32 T18N, R2W	Section 33 T18N, R2W

SECTION CORNER RECORD

SW 550-900

BOONE COUNTY SURVEYOR'S OFFICE

State Plane grid coordinates NAD83 (2011):

North: 1716231.14 East: 3077377.24 (U.S. survey feet)

Type of monument: Harrison, 4" disk 'Section Corner'

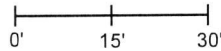
Depth: Six inches below adjacent road surface

Indiana tie card references:

IN02_T18NR2W33_44 IN02_T18NR2W34_36

CORNER WITNESS DETAIL

SCALE 1" = 30'



A - Boone County witness mark, flush, 30.4'

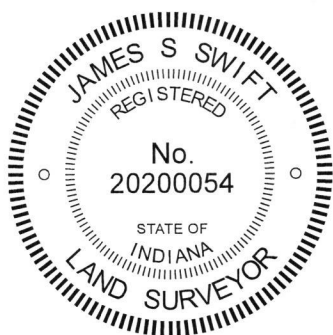
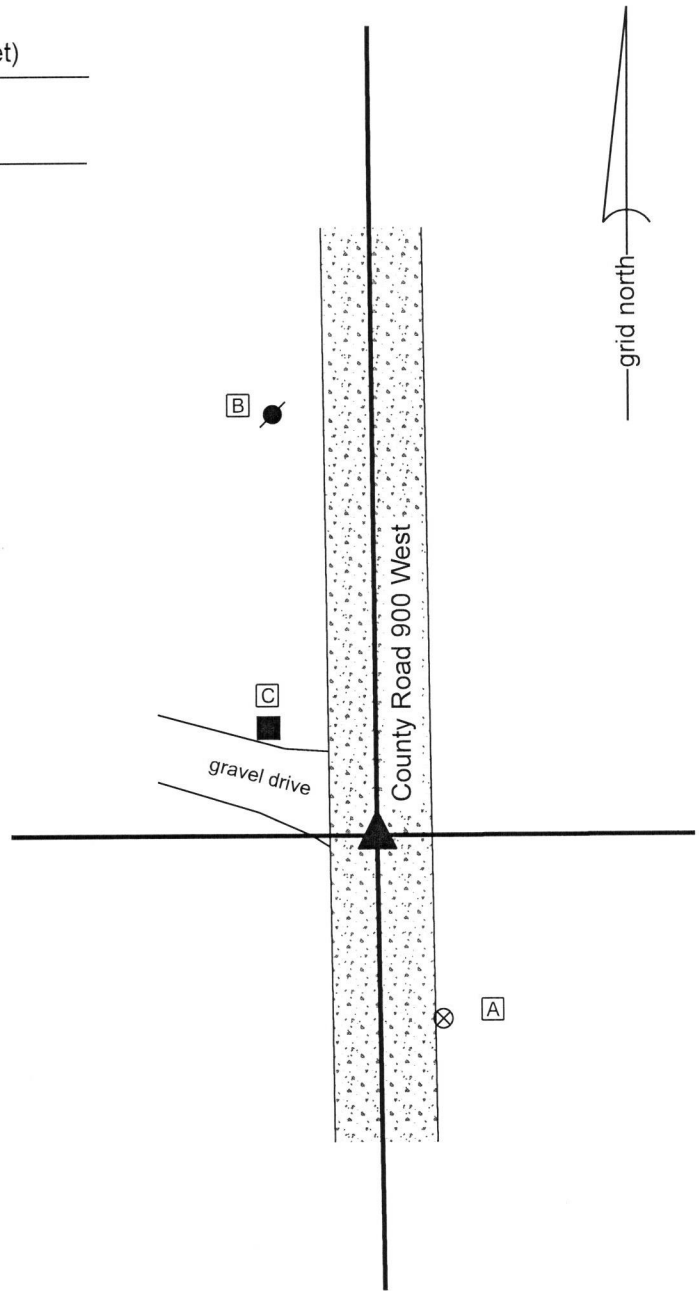
B - Mag nail set in E. side power pole, 2' a.g., 67.5'

C - Mag nail set in E. side wooden post, 2' a.g., 22.6'

The Harrison monument was set in place of a rebar found. No specific descriptions of this corner were found in the BCS Surveyor's Record beyond the original establishment of the corner as a wood post in 1820.

A tie card which appears to be an image of field notes supplied by a private survey company, source not known, shows the corner as "I.P." and states "no stone." The field notes also states "see Job #800104."

This corner was excavated on October 23, 2019. Prior to excavation, a vertical section of 5/8 inch rebar was found in the center of the county road at a position which fit with the two remaining distance tie references shown on the aforementioned field notes. Excavation of an area extending 2.5 feet north, 4 feet east, 4 feet west and 4.5 feet south revealed no further evidence of the corner. It was observed that the road bed is approximately 3 inches thick in this vicinity. The position of the rebar fits well with the relative positions of proximate corners. The field notes / tie card demonstrate that the rebar was found or set in line with fences to the east and west, indicating that the position of the rebar agreed with local evidence of the corner. As of the date of publication of this document, the fence to the east has been removed and the fence to the west is intermittent. The rebar appears to be the same monument referenced in the field notes and did not appear to be disturbed. The rebar was accepted as the best available evidence of the corner. It was removed and replaced with a Harrison monument in the same position on October 23, 2019.



Kenneth E. Hedge
Kenneth E. Hedge, County Surveyor

James S. Swift
James S. Swift, IN LS 20200054
December 11, 2019

Jackson Township	
Section 33 T18N, R2W	Section 34 T18N, R2W

SECTION CORNER RECORD

SW 550-1000

BOONE COUNTY SURVEYOR'S OFFICE

State Plane grid coordinates NAD83 (2011):

North: 1716212.93 East: 3072064.21 (U.S. survey feet)

Type of monument: 24" length of 5/8" diameter rebar with aluminum cap stamped, 'Boone County Surveyor'
Depth: 14" below surrounding ground

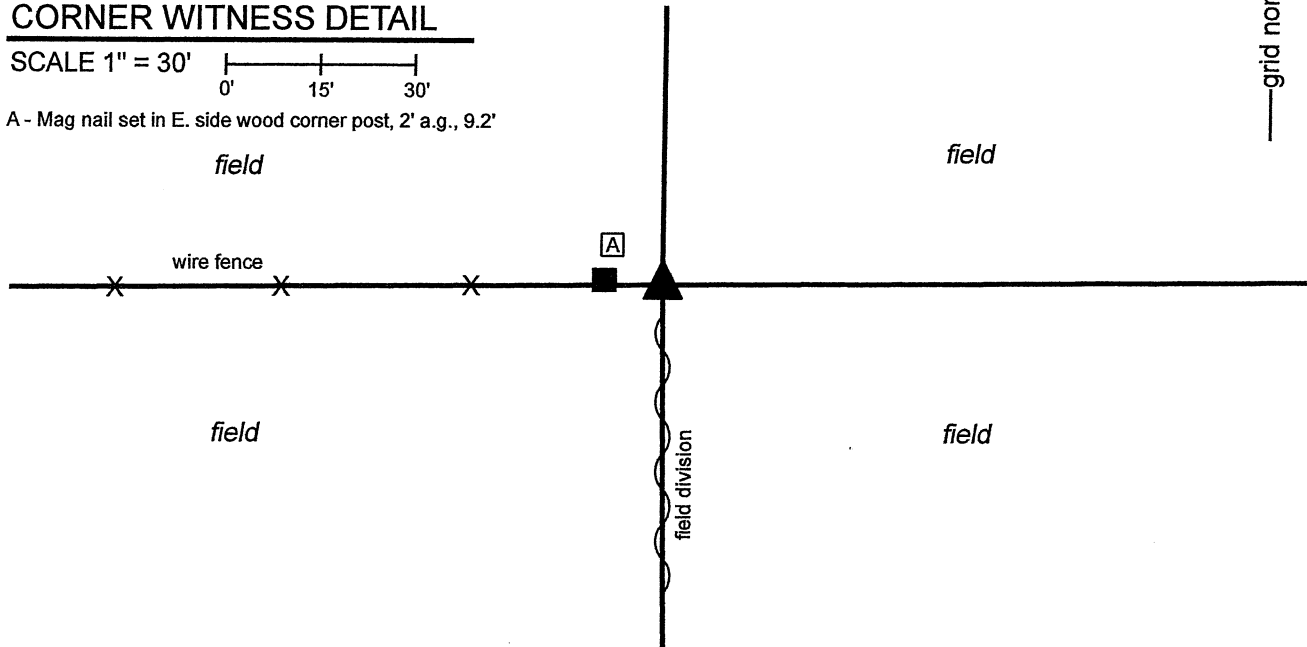
Indiana tie card references:

IN02_T18NR2W32_44 IN02_T18NR2W33_36

CORNER WITNESS DETAIL

SCALE 1" = 30'
0' 15' 30'

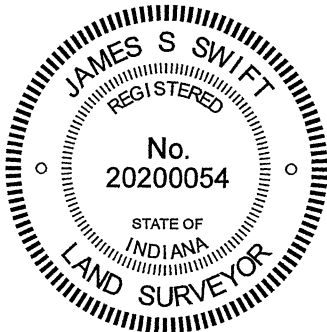
A - Mag nail set in E. side wood corner post, 2' a.g., 9.2'



The rebar with Boone County cap was set in place of a stone found.

A BCS record of April 22, 1870 states, with respect to this corner, "Reest. from trees (down). Set two rocks. One 8.6.5 1/2 mkd +. Top one 16.10.5 +." No recent BCS tie cards were found referencing this corner, nor were any surveys recorded in the Boone County Recorder's Office found referencing the corner.

Excavation was performed at this corner on April 23, 2021. Prior to excavation, it was observed that the corner almost certainly fell in an area of tilled field. The existing east-west fence providing evidence of the north line of the southeast quarter of Section 32 terminates at an end post approximately nine feet west of the corner. The existing north-south fence which provides evidence of the east line of said southeast quarter terminates at an old corner post approximately 514 feet south of the corner. An estimated position for the corner was computed at the intersection of the easterly prolongation of the east-west fence and the northerly prolongation of a line connecting a stone found at the southeast corner of Section 32 (see BCS Corner SW 600-1000) through the post 514 feet south of subject corner. Accessory evidence of the corners 1/2 mile and 1/4 mile, respectively, to both the east and west indicated that the computed position fell in a reasonable location. Excavation at the computed position on April 23, 2021 revealed substantial evidence of an old corner, in the form of numerous small rocks and wire fencing found embedded in the field which appeared be oriented to the south and east. No post was found, but the buried pieces of fence indicated the previous presence of a post. During excavation, the lower stone described in the 1870 record was found at 16 inches deep, being the lowest rock found in the immediate vicinity. The dimensions of the found stone matched the 1870 call and a "+" mark was clearly visible, etched on the surface of the stone. It is observed that the 16-inch depth of this stone precisely matched the largest dimension recorded for the upper stone. Clearly, the upper stone has been previously removed, but the lower stone remained. The found stone was held as marking the corner. The stone was removed and replaced with a 24-inch length of 5/8-inch rebar with metal 'Boone County Surveyor' cap set at 14 inches deep in the tilled field, 9.2 feet east of the existing end post which marks the easterly terminus of the existing east-west fence.



Kenneth E. Hedge
Kenneth E. Hedge, County Surveyor

James S. Swift
James S. Swift, IN LS 20200054

May 5, 2020

Jackson Township

Section 32 T18N, R2W	Section 33 T18N, R2W
-------------------------	-------------------------

SECTION CORNER RECORD

SW 600-900

BOONE COUNTY SURVEYOR'S OFFICE

State Plane grid coordinates NAD83 (2011):

Corner 1: North: 1713583.52 East: 3077410.66 (U.S. survey feet)

Corner 2: North: 1713583.47 East: 3077398.78 (U.S. survey feet)

Corner 1: Harrison, 4" disk 'Section Corner', 4" below adjoining gravel

Corner 2: Harrison, 4" disk 'Section Corner', 4" below road surface

Indiana tie card references:

IN02_T18NR2W34_72 IN02_T18NR2W33_80

IN02_T17NR2W04_08 IN02_T17NR2W03_00

① S.E. Corner, Section 33
S.W. Corner, Section 34
T 18 N, R 2 W

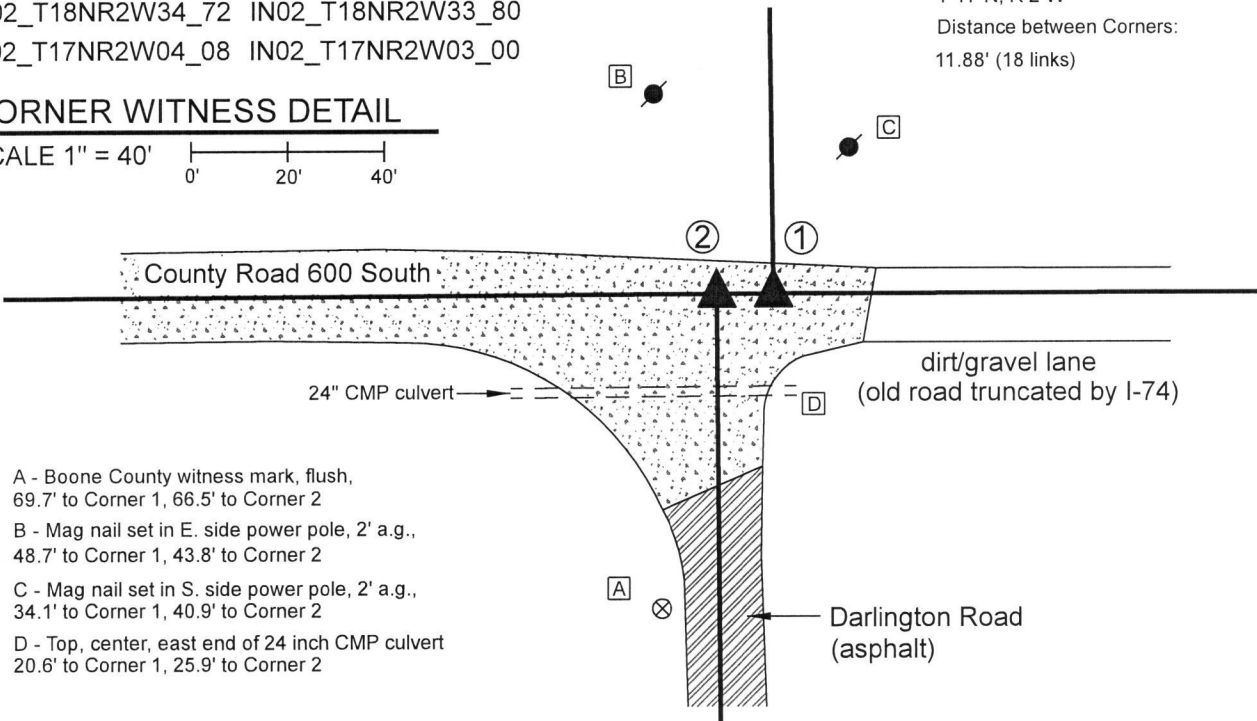
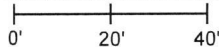
② N.W. Corner, Section 3
N.E. Corner, Section 4
T 17 N, R 2 W

Distance between Corners:
11.88' (18 links)



CORNER WITNESS DETAIL

SCALE 1" = 40'



A - Boone County witness mark, flush,
69.7' to Corner 1, 66.5' to Corner 2

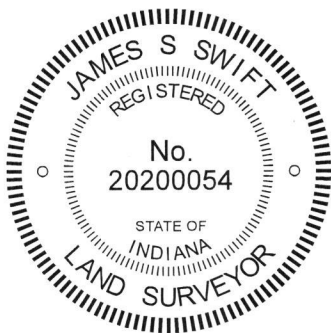
B - Mag nail set in E. side power pole, 2' a.g.,
48.7' to Corner 1, 43.8' to Corner 2

C - Mag nail set in S. side power pole, 2' a.g.,
34.1' to Corner 1, 40.9' to Corner 2

D - Top, center, east end of 24 inch CMP culvert
20.6' to Corner 1, 25.9' to Corner 2

The Harrison monument at Corner 2 was set in place of a rebar found. The Harrison monument at Corner 1 was set at a calculated position. A BCS record of November 11, 1865 states, with respect to Corner 2, "Found both stumps of trees. Drove no stake." No specific descriptions of Corner 1 were found in the BCS Surveyor's Record beyond the original establishment of the corner as a wood post in 1819. No recent BCS tie cards were found referencing these corners.

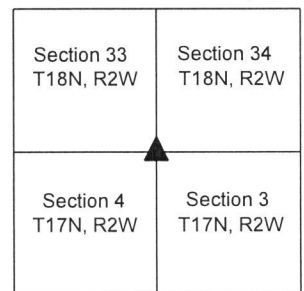
Initial excavation was performed at this set of corners on October 24, 2019. Prior to excavation, a 1/2 inch diameter rebar was found at the intersection of the prolonged centers of the county roads to the south and west, representing the commonly accepted position of Corner 2. No specific evidence was found marking the accepted position of Corner 1. Excavation centered on the found rebar revealed substantial evidence of a previously wet area. The base material of the road bed is made up of fist sized rocks. Below the road bed, at 2 feet deep, was found an intact section of 'corduroy road,' being large pieces of wood, milled with flat tops, oriented east-west and embedded in the clay layer below the road bed. This discovery is held as substantial evidence of the previously wet area and may explain why the surveyors in 1865 drove no stake. No further excavation was performed at Corner 2 as it is considered highly unlikely that a stone would be found below the corduroy road. Excavation at Corner 1 was limited due the presence of a large multi-pair phone line which was improperly marked prior to excavation and damaged during excavation. The rebar found at Corner 2 was held as marking that corner. The rebar was removed and replaced with a Harrison monument in the same position. Corner 1 was established at the record closing distance of 18 links from Corner 2 on the prolongation of the line connecting Corner 2 with the standard corner 1/2 mile west (see BCS Corner SW 600-950). A Harrison monument was set at this position on November 1, 2019. It is noted that this computed position fits very well with evidence of and relative distances to the standard corners 1/2 mile east and 1 mile east, respectively (see BCS corners SW-600-850 and SW 600-800).



Kenneth E. Hedge
Kenneth E. Hedge, County Surveyor

James S. Swift
James S. Swift, IN LS 20200054
November 19, 2019

Jackson Township



SECTION CORNER RECORD

SW 600-950

BOONE COUNTY SURVEYOR'S OFFICE

State Plane grid coordinates NAD83 (2011):

Corner 1: North: 1713571.67 East: 3074743.95 (U.S. survey feet)

Corner 2: North: 1713571.69 East: 3074747.90 (U.S. survey feet)

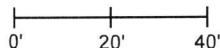
Both Corners: Harrison, 4" disk 'Section Corner', 6" below road

Indiana tie card references:

IN02_T18NR2W33_76 IN02_T17NR2W04_04

CORNER WITNESS DETAIL

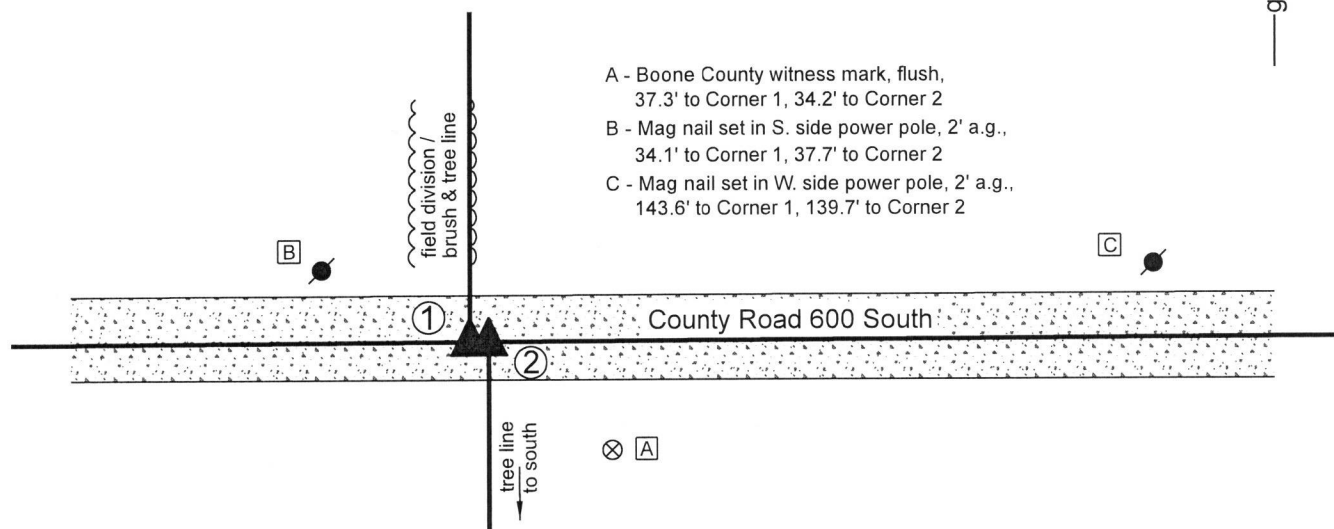
SCALE 1" = 40'



① South Quarter Corner
Section 33, T 18 N, R 2 W

② North Quarter Corner
Section 4, T 17 N, R 2 W

Distance between corners:
3.96' (6 links)



A - Boone County witness mark, flush,
37.3' to Corner 1, 34.2' to Corner 2

B - Mag nail set in S. side power pole, 2' a.g.,
34.1' to Corner 1, 37.7' to Corner 2

C - Mag nail set in W. side power pole, 2' a.g.,
143.6' to Corner 1, 139.7' to Corner 2

The Harrison monument at Corner 2 was set in place of a stone found. The Harrison monument at Corner 1 was set in a calculated position.

A BCS record dated November 1, 1865 states, with respect to Corner 2, "Established. Set a rock 12.12.8 + on top and ash stake under it." A subsequent BCS record dated December 3, 1868 states, with respect to Corner 1, "6 links W. of corner for sec. 4. Set a stake." No recent BCS tie cards were found referencing the corners.

Excavation was performed at this set of corners on November 1, 2019. Prior to excavation, two railroad spikes were found 18.3 feet apart. The easterly spike fit generally with vague evidence of occupation to the south. The westerly spike was south of a wood post on the north side of the road. No fencing was found bearing north from this post and it was found to be at the westerly edge of a wide north-south swath of brush and small trees. The two spikes were obviously too far apart to represent the respective corners, as the 1868 record calls for a separation of 6 links, which matches the computed average closing distance from the original federal notes with respect to the northeast and northwest corners of section 4. Excavation at Corner 2 revealed the stone described in the 1865 record found 2.5 feet west and 0.5 foot north of the easterly of the two railroad spikes. The stone was found at six inches below grade. It measured 12 inches north-south by 12 inches east-west by 8 inches tall with a distinct etched "+" mark on the top, center. The stone was accepted as being the monument described in the 1865 record and was held as marking Corner 2. The stone was removed and replaced with a Harrison monument in the same position. Excavation at a point 6 links west of the found stone revealed no further evidence of Corner 1. This corner was established at 6 links (3.96 feet) west of Corner 2 on the westerly prolongation of the line connecting Corner 1 with the standard corner 1/2 mile east (see BCS Corner SW 600-900). A Harrison monument was set at this computed position on November 1, 2019. No excavation was performed around the spike found to the west, as it is obviously too far west to represent evidence of Corner 1, given the stone found at Corner 2 and the correlation of the 6 link distance called in the 1868 record. The spike was left in place 11.9 feet westerly of Corner 1.

Corner 1 was originally established as a wood post in 1819. Corner 2 is not an original federal corner.



Kenneth E. Hedge
Kenneth E. Hedge, County Surveyor

James S. Swift
James S. Swift, IN LS 20200054
November 19, 2019

Jackson
Township

Section 33
T18N, R2W

Section 4
T17N, R2W

SECTION CORNER RECORD

SW 600-1000

BOONE COUNTY SURVEYOR'S OFFICE

State Plane grid coordinates NAD83 (2011):

Corner 1: North: 1713559.98 East: 3072095.16 (U.S. survey feet)

Corner 2: North: 1713560.06 East: 3072114.96 (U.S. survey feet)

Corner 1: Harrison, 4" disk 'Section Corner', 6" below grade

Corner 2: Harrison, 4" disk 'Section Corner', 6" below grade

Indiana tie card references:

IN02_T18NR2W33_72 IN02_T18NR2W32_80

IN02_T17NR2W05_08 IN02_T17NR2W04_00

① S.E. Corner, Section 32
S.W. Corner, Section 33
T 18 N, R 2 W
Harrison Monument Set

② N.E. Corner, Section 5
N.W. Corner, Section 4
T 17 N, R 2 W
Harrison Monument Set

Distance between monuments: 30 links = 19.80'

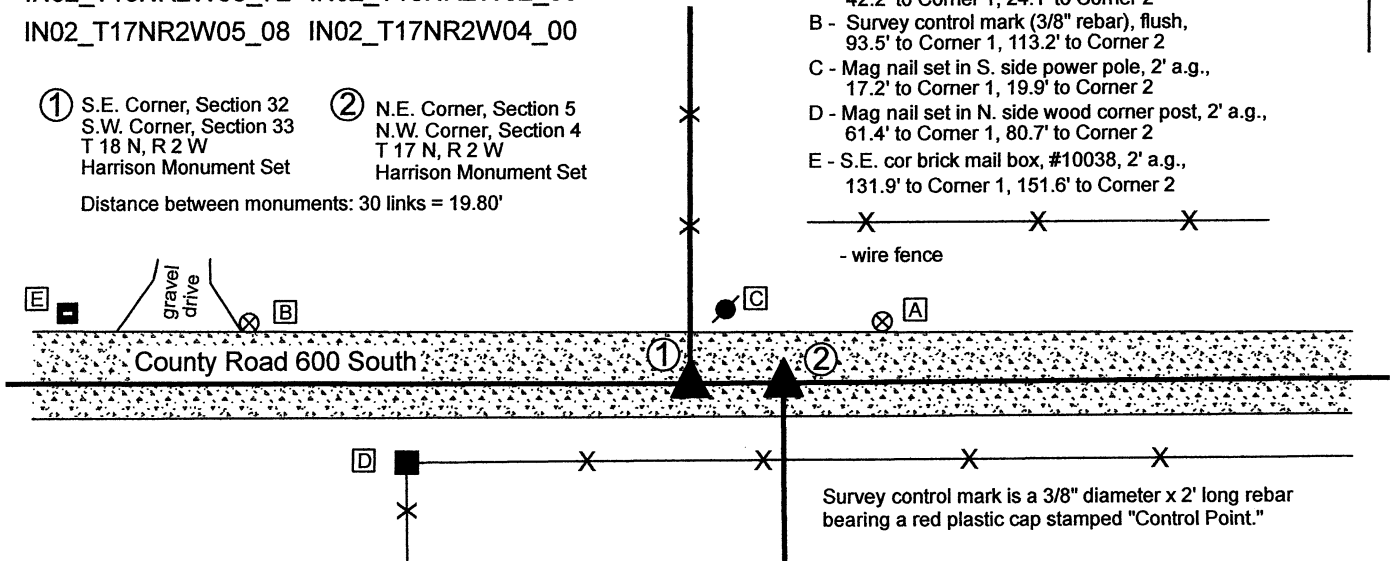
CORNER WITNESS DETAIL

SCALE 1" = 40'

- A - Survey control mark (3/8" rebar), flush, 42.2' to Corner 1, 24.1' to Corner 2
- B - Survey control mark (3/8" rebar), flush, 93.5' to Corner 1, 113.2' to Corner 2
- C - Mag nail set in S. side power pole, 2' a.g., 17.2' to Corner 1, 19.9' to Corner 2
- D - Mag nail set in N. side wood corner post, 2' a.g., 61.4' to Corner 1, 80.7' to Corner 2
- E - S.E. cor brick mail box, #10038, 2' a.g., 131.9' to Corner 1, 151.6' to Corner 2

- wire fence

grid north



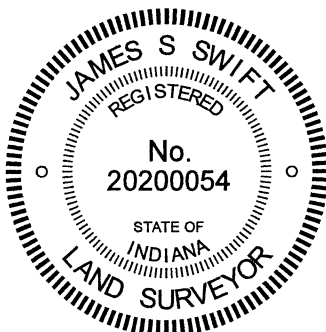
Survey control mark is a 3/8" diameter x 2' long rebar bearing a red plastic cap stamped "Control Point."

The Harrison monument at Corner 1 was set in place of a stone found. The Harrison monument at Corner 2 was set at a calculated position. Corner 1 was originally established as a wood post in 1819. Corner 2 was established in 1820 at a closing distance of 30 links (19.8 feet) east of Corner 1. A BCS record of November 1, 1865 states, with respect to Corner 2, "Found by measuring the lap from cor. 32 & 33, township 18. Set a rock 12.8.6 + mark on S. side. Is very near the edge of a large Oak on S.W." A BCS record of December 13-14, 1894 states, with respect to Corner 1, "Reestablished from lap. Set Rock + 14.10.10. Corner Rock Sects 4 & 5 East 30 [links]." It is noted that the term "lap" refers to the offset between corners on a township or range line. It is also noted that in 1865, some object, perhaps the original wood post, must have been present at Corner 1, from which Corner 2 was established. This object was evidently no longer present in 1895, at which time Corner 1 was established relative to the position of the rock at Corner 2. Both records clearly indicate that the corners were set at 30 links (19.8 feet) apart, which is the same closing offset noted in the 1820 federal field notes.

No recent BCS tie cards were found referencing the corner. Surveys by William J. Hudson, recorded as Miscellaneous Record 139, pages 939 - 945 in the Office of the Boone County Recorder, call Corner 2 as a railroad spike set with a statement that this position was established by a previous survey, with no reference information about the previous survey.

These corners were excavated on March 19, 2021. Prior to excavation, a rebar with red plastic cap (marking illegible) was found ostensibly marking Corner 1. No metal monument was found marking Corner 2. Excavation revealed a stone found at Corner 1 at 6 inches deep. The stone measured 14 inches tall by 8 inches N-S by 4 inches E-W. The stone had clearly been broken previously, presumably by road grading equipment, which may account for the variation between the measured size and that which was noted in 1895. The stone was adjacent to the found rebar, in line with the old fence to the north. Excavation of an area 10 feet E-W by 4 feet N-S at Corner 2 revealed no further evidence of that corner. The position held by Hudson appears to have been approximately 7 feet west of a position 30 links East of Corner 1. Excavation at Corner 2 encompassed both the computed Hudson position and the computed position 30 links East of Corner 1. Deeds for land in section 4 and 5 either use the description created by Hudson, which calls for the fence shown on this drawing, west of both corners, or use acreage calls which are inconclusive with respect to the position of Corner 2. The stone at Corner 1 was held as marking that corner. Corner 2 was established at 30 links east, per the federal field notes and two previous BCS records. The fact that no stone was found at Corner 2 may be due to the large Oak tree noted in the 1865 record. That tree is clearly no longer present, and its removal may have also removed the stone. It is also noted that the stone found at Corner 1 had clearly been damaged in the past. Road grading equipment may have also removed the stone at Corner 2.

A Harrison monument was set in place of the found stone at Corner 1 on March 19, 2021. A Harrison monument was set at Corner 2, at the computed position 30 links east of Corner 1, on September 14, 2021.



Kenneth E. Hedge, County Surveyor

James S. Swift, IN LS 20200054
September 15, 2021

Jackson Township

Section 32 T18N, R2W	Section 33 T18N, R2W
Section 5 T17N, R2W	Section 4 T17N, R2W