

SECTION CORNER RECORD

BOONE COUNTY SURVEYOR'S OFFICE

SE 500-100

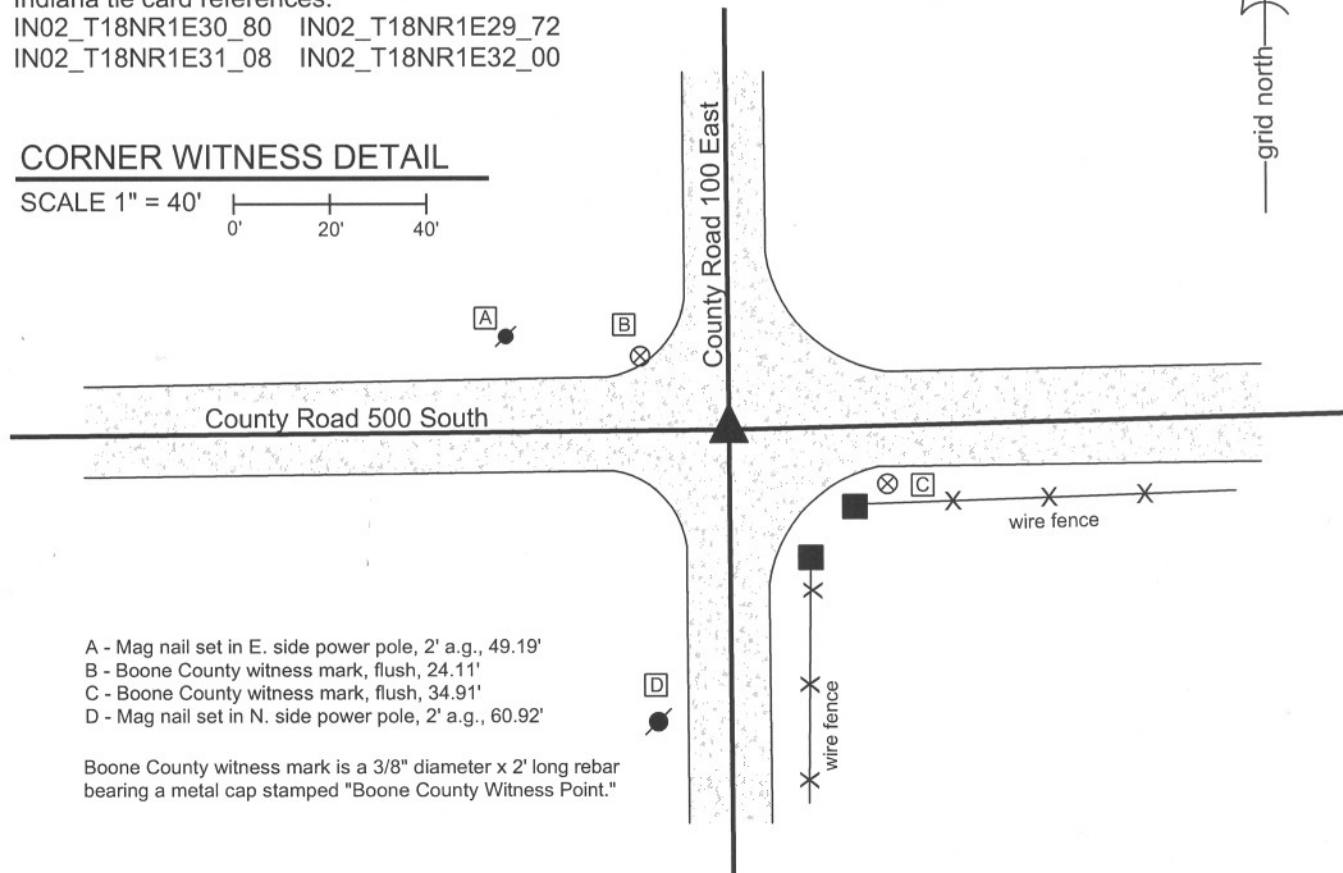
State Plane grid coordinates NAD83 (CORS96):
 North: 1719232.36 East: 3130012.93 (U.S. survey feet)

Type of monument: Harrison, 4" disk 'Section Corner'
 Depth: six inches below adjacent gravel road surface

Indiana tie card references:
 IN02_T18NR1E30_80 IN02_T18NR1E29_72
 IN02_T18NR1E31_08 IN02_T18NR1E32_00

CORNER WITNESS DETAIL

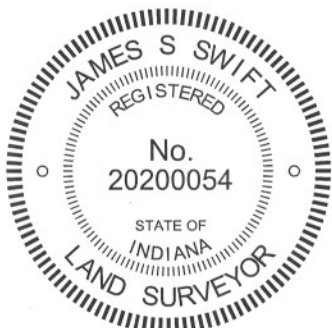
SCALE 1" = 40'



- A - Mag nail set in E. side power pole, 2' a.g., 49.19'
- B - Boone County witness mark, flush, 24.11'
- C - Boone County witness mark, flush, 34.91'
- D - Mag nail set in N. side power pole, 2' a.g., 60.92'

Boone County witness mark is a 3/8" diameter x 2' long rebar bearing a metal cap stamped "Boone County Witness Point."

The Harrison monument was set over a stone found.
 A BCS record of August 19-20, 1867 states "Set Rock 17.12.8." A BCS tie card dated May 5, 1992 shows the corner as an iron pin found.
 This corner was excavated on March 1, 2011. Prior to excavation a 1/2 inch diameter rebar was found at 2 inches deep. Excavation revealed a stone found at 15 inches deep. With the top 11 inches of the stone exposed, it measures approximately 12 inches E-W by 6 inches N-S and remains entirely stable, embedded in the clay layer below the road. The top of the stone protruded approximately 3 inches out of the clay layer in the base of the road bed. No specific marking were found, nor were any noted in the 1867 record. This stone was accepted as being the stone described in the 1867 record and was held as marking the corner. The stone was left in place. The top 10 inches of the stone were encased in concrete and a Harrison monument was set over the top, center of the stone. The rebar, removed during excavation, had been one foot north of the stone.
 This corner was originally established as a wood post in June, 1820.



Kenneth E. Hedge
 Kenneth E. Hedge, County Surveyor

James S. Swift
 James S. Swift, IN LS 20200054
 March 1, 2012

Harrison Township Perry Township

Section 30 T18N, R1E	Section 29 T18N, R1E
Section 31 T18N, R1E	Section 32 T18N, R1E

PHOTOGRAPHIC DOCUMENTATION

Date of photography: March 7, 2011

View of the stone as first exposed.



View of the stone from above and west.



View from the west, looking across the stone and east along County Road 500 South.



View of the stone from above and north.



View of the stone from above and east.



For details and documentation, refer to related sheet "Section Corner Record."

SECTION CORNER RECORD

SE 500-150

BOONE COUNTY SURVEYOR'S OFFICE

State Plane grid coordinates NAD83 (NSRS 2007):

North: 1719297.71 East: 3132686.16 (U.S. survey feet)

Type of monument: Harrison, 4" disk 'Section Corner'

Depth: six inches below adjacent gravel road surface

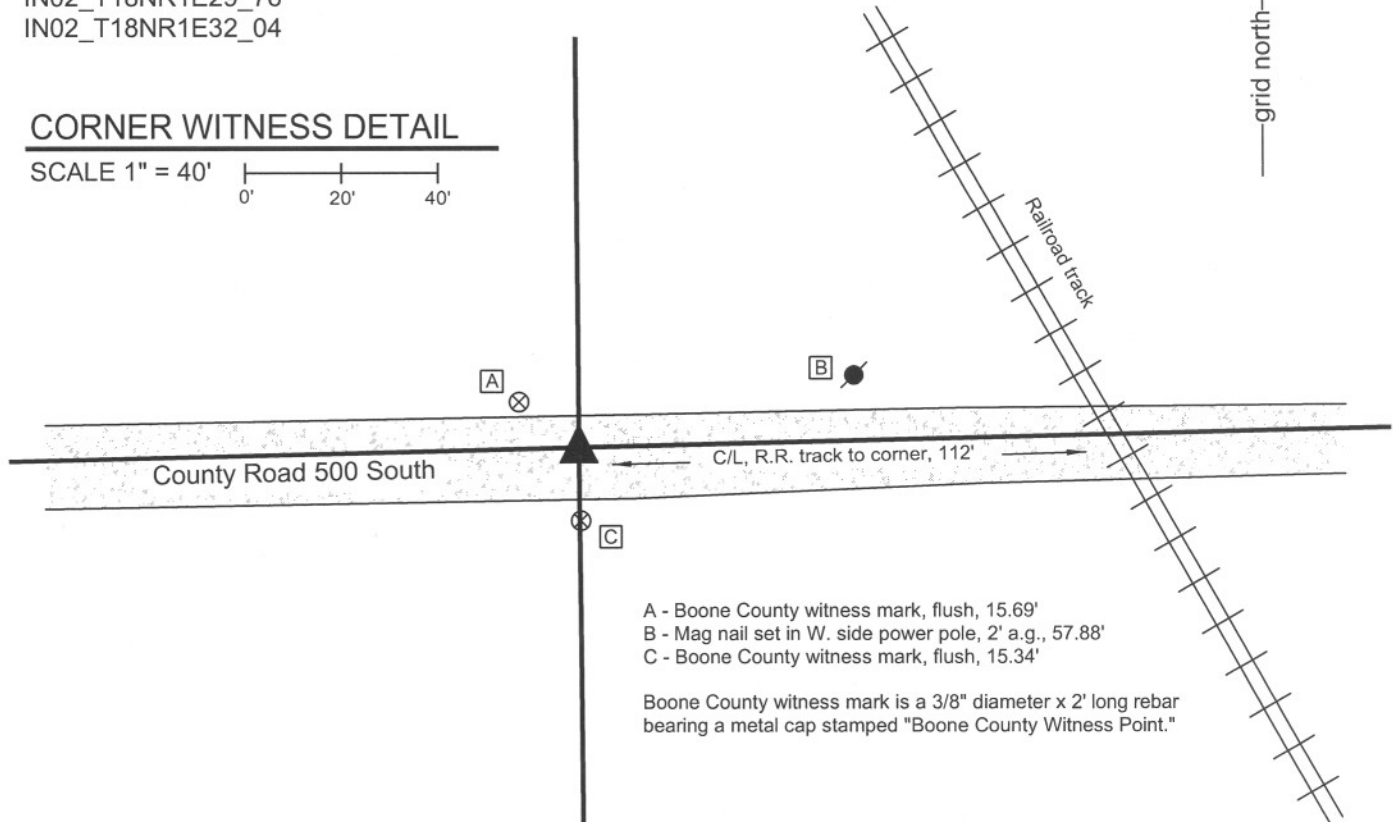
Indiana tie card references:

IN02_T18NR1E29_76

IN02_T18NR1E32_04

CORNER WITNESS DETAIL

SCALE 1" = 40'



- A - Boone County witness mark, flush, 15.69'
- B - Mag nail set in W. side power pole, 2' a.g., 57.88'
- C - Boone County witness mark, flush, 15.34'

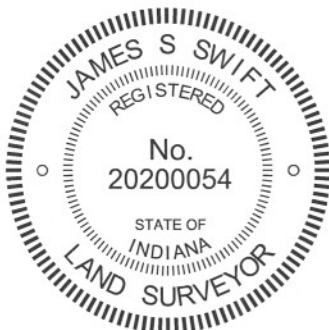
Boone County witness mark is a 3/8" diameter x 2' long rebar bearing a metal cap stamped "Boone County Witness Point."

The harrison monument was set over a stone found.

A BCS record of August 19-20, 1867 states "Reestablished. Set Rock 18.13.7" A BCS tie card dated May 5, 1992 shows the corner as a 1 inch hollow pipe found."

This corner was excavated on March 7, 2011. Prior to excavation, an iron pipe was found at 3 inches below grade. The pipe was removed and found to be 8 inches long. Another pipe was found directly below it. Further excavation revealed a stone found at 18 inches deep. The stone is vertical and embedded in the clay layer below the road. With the top 11 inches of the stone exposed, it measures 12 inches E-W by 7 inches N-S and remained stable in the clay. The stone protruded approximately 4 inches out of the clay layer into the bottom of the road bed. No specific markings were found on the stone, nor were any called for in the 1867 record. This stone was accepted as being the stone described in the 1867 record and was held as marking the corner. The stone was left in place. The top 4 inches of the stone were encased in concrete and a harrison monument was set over the top center and high point of the stone. The iron pipes, removed during excavation, had been 2.5 feet south of the stone.

This corner was originally established as a wood post in June, 1820.



Kenneth E. Hedge
Kenneth E. Hedge, County Surveyor

James S. Swift
James S. Swift, IN LS 20200054
March 1, 2012

Perry Twp

Section 29
T18N, R1E

Section 32
T18N, R1E

PHOTOGRAPHIC DOCUMENTATION

Date of photography: March 7, 2011

View of the stone from above and west.



View of the stone and cross section of the road from the south.



View from the east, looking across the stone and west along County Road 500 South.



View of the stone from above.



View of the stone from above and east.



For details and documentation, refer to related sheet "Section Corner Record."

SECTION CORNER RECORD

SE 500-200

BOONE COUNTY SURVEYOR'S OFFICE

State Plane grid coordinates NAD83 (NSRS 2007):

North: 1719359.75 East: 3135360.29 (U.S. survey feet)

Type of monument: Harrison, 4" disk 'Section Corner'

Depth: One inch below adjacent road surface

Indiana tie card references:

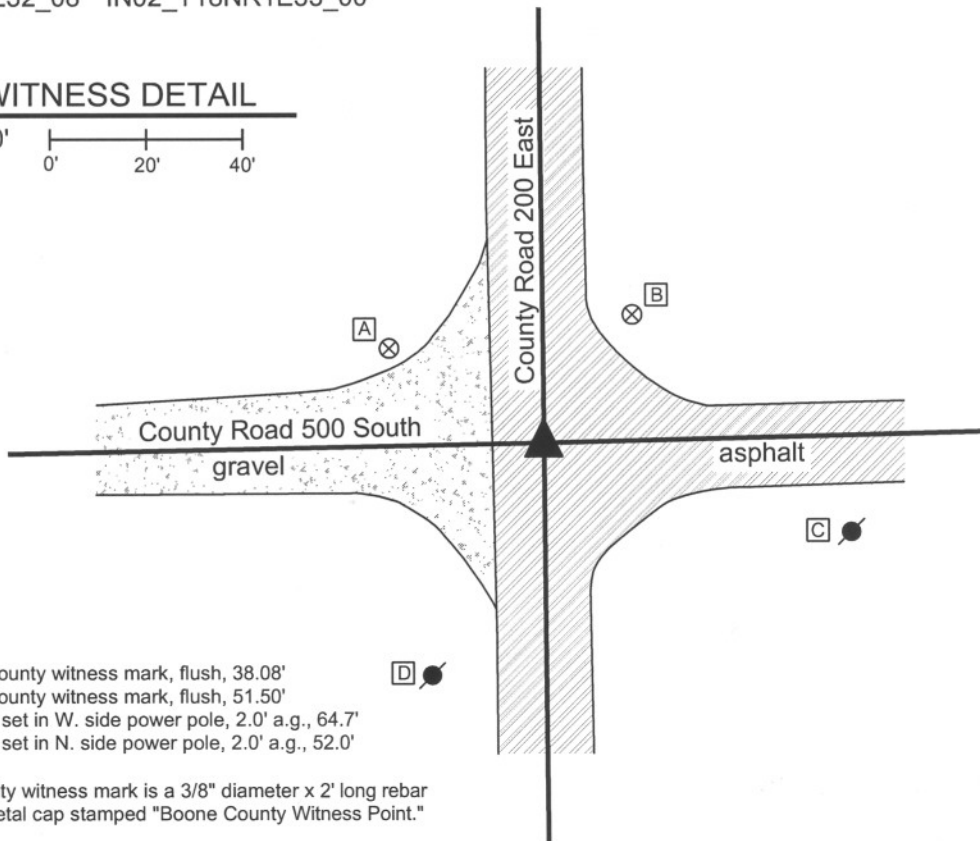
IN02_T18NR1E28_72 IN02_T18NR1E29_80

IN02_T18NR1E32_08 IN02_T18NR1E33_00



CORNER WITNESS DETAIL

SCALE 1" = 40'



- A - Boone County witness mark, flush, 38.08'
- B - Boone County witness mark, flush, 51.50'
- C - Mag nail set in W. side power pole, 2.0' a.g., 64.7'
- D - Mag nail set in N. side power pole, 2.0' a.g., 52.0'

Boone County witness mark is a 3/8" diameter x 2' long rebar bearing a metal cap stamped "Boone County Witness Point."

The harrison monument was set over a stone found.

A BCS record of August 19 - 20, 1867 states "Reestablished in line 40.15 from D & D Sect. 29. Set a Rock 13,12,11." A BCS tie card dated July 20, 1968 states "no stone." This corner was excavated on November 10, 2009. Prior to excavation, a road nail was found in a hole in the asphalt 4 inches below grade. Excavation revealed a railroad rail on end at 8 inches deep below the nail. Further excavation revealed the record stone found at 21 inches deep, north of the rail. The stone is embedded in the clay layer below the road, protruding approximately 3 inches out of the clay into the base of the road. The stone measures 13 inches NE-SW by 11 inches NW-SE and is 12 inches tall. No specific markings were found on the stone, nor were any mentioned in the record. The harrison monument was set over the the approximate top center of the stone. The nail and railroad rail, both removed during excavation, had been 1.5 feet south and 0.7 foot east of the stone.

This corner was originally established as a wood post in June, 1820.



Kenneth E. Hedge
Kenneth E. Hedge, County Surveyor

James S. Swift

James S. Swift, IN LS 20200054

July 14, 2010

Perry Township

Section 29 T18N, R1E	Section 28 T18N, R1E
Section 32 T18N, R1E	Section 33 T18N, R1E

PHOTOGRAPHIC DOCUMENTATION

Date of photography: November 10, 2009

View of the stone as first exposed.
View from above and east.



View of the stone after drying in the air briefly.
View from above and east.



View from the south, looking across the stone
and north along County Road 200 East.



For details and documentation, refer to
related sheet "Section Corner Record."

SECTION CORNER RECORD

SE 550-100

BOONE COUNTY SURVEYOR'S OFFICE

State Plane grid coordinates NAD83 (CORS96):

North: 1716571.04 East: 3130032.53 (U.S. survey feet)

Type of monument: Harrison, 4" disk 'Section Corner'

Depth: six inches below adjacent gravel road surface

Indiana tie card references:

IN02_T18NR1E31_44

IN02_T18NR1E32_36

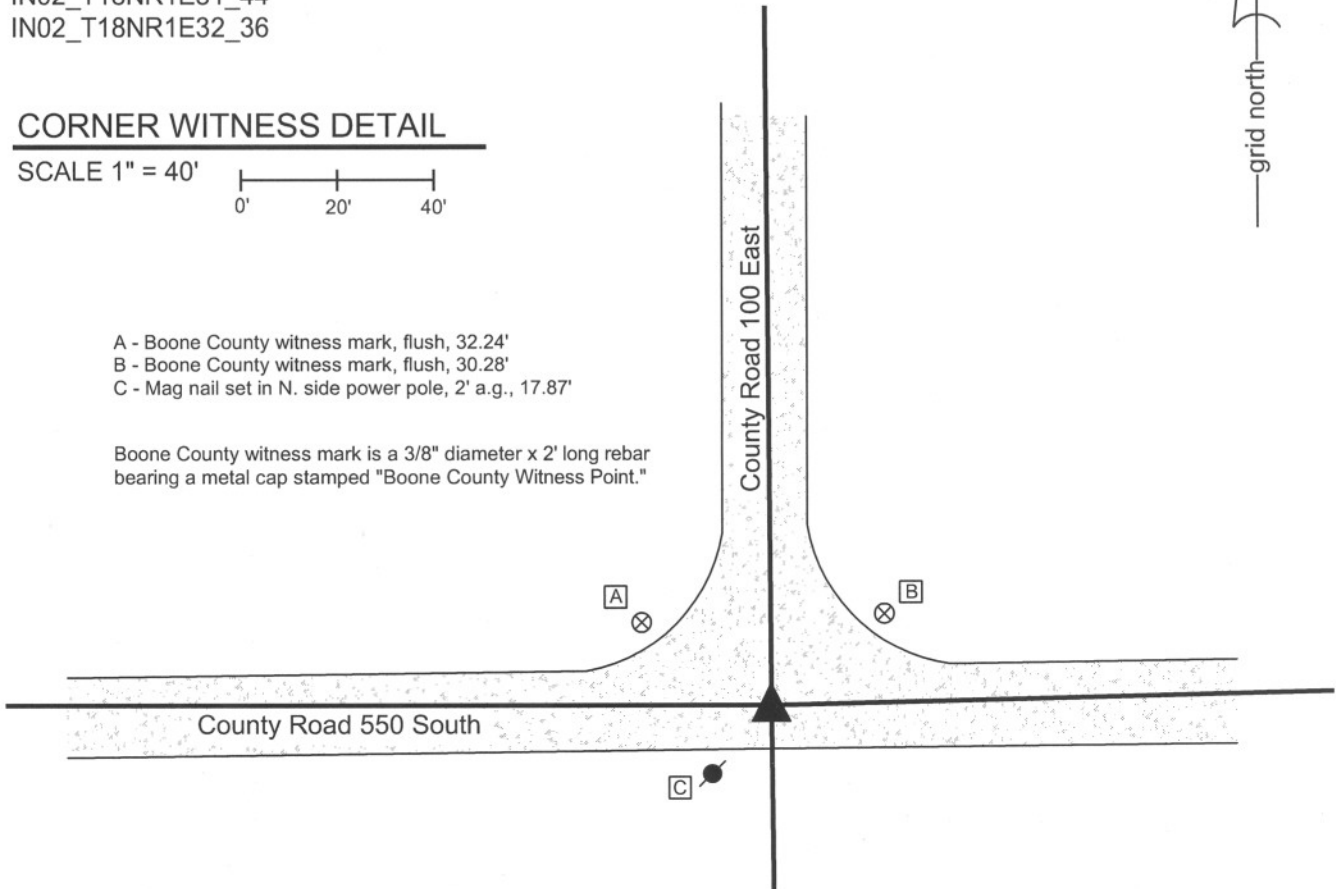
CORNER WITNESS DETAIL

SCALE 1" = 40'



- A - Boone County witness mark, flush, 32.24'
- B - Boone County witness mark, flush, 30.28'
- C - Mag nail set in N. side power pole, 2' a.g., 17.87'

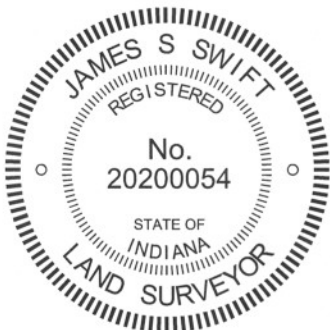
Boone County witness mark is a 3/8" diameter x 2' long rebar bearing a metal cap stamped "Boone County Witness Point."



The harrison monument was set in place of a stone found.

A BCS record of August 19-20, 1867 states "Reestablished from trees. Set Rock 24.9.9." A BCS tie card dated May 5, 1992 shows the corner as an iron pin found. This corner was excavated on March 8, 2011. Prior to excavation, an iron pin was found at 2 inches below grade. Excavation revealed a stone found at 7 inches deep. The stone was vertical, embedded in the clay layer below the road and protruding approximately 3 inches out of the clay into the base of the road bed. The stone was removed, measured and found to be 9 inches N-S by 9 inches E-W by 18 inches tall. No markings were found on the stone, nor were any mentioned in the 1867 record. While the stone was vertical and the two smaller dimensions matched the 1867 record, the larger dimension did not match. The stone, as found, was 18 inches tall, not 24 inches. No explanation is offered for this. No other evidence of the corner was found and the stone was held as marking the corner. The stone was not set back in place and a harrison monument was set in place of the stone, specifically at the position of the top, center of the stone. The found iron pin, removed during excavation, had been 1.6 feet south and 0.7 foot east of the top, center of the stone.

This corner was originally established as a wood post in June, 1820.



Kenneth E. Hedge
 Kenneth E. Hedge, County Surveyor

James S. Swift
 James S. Swift, IN LS 20200054
 March 1, 2012

Harrison Township	Perry Township
Section 31 T18N, R1E	Section 32 T18N, R1E

PHOTOGRAPHIC DOCUMENTATION

Date of photography: March 8, 2011

View of the stone and rebar.



The stone removed from the road bed.



View from the east, looking across the stone and west along County Road 550 South.



View from the south, looking across the stone and north along County Road 100 East.



For details and documentation, refer to related sheet "Section Corner Record."

SECTION CORNER RECORD

SE 550-200

BOONE COUNTY SURVEYOR'S OFFICE

State Plane grid coordinates NAD83 (NSRS 2007):

North: 1716698.61 East: 3135385.06 (U.S. survey feet)

Type of monument: Harrison, 4" disk 'Section Corner'

Depth: One inch below adjacent road surface

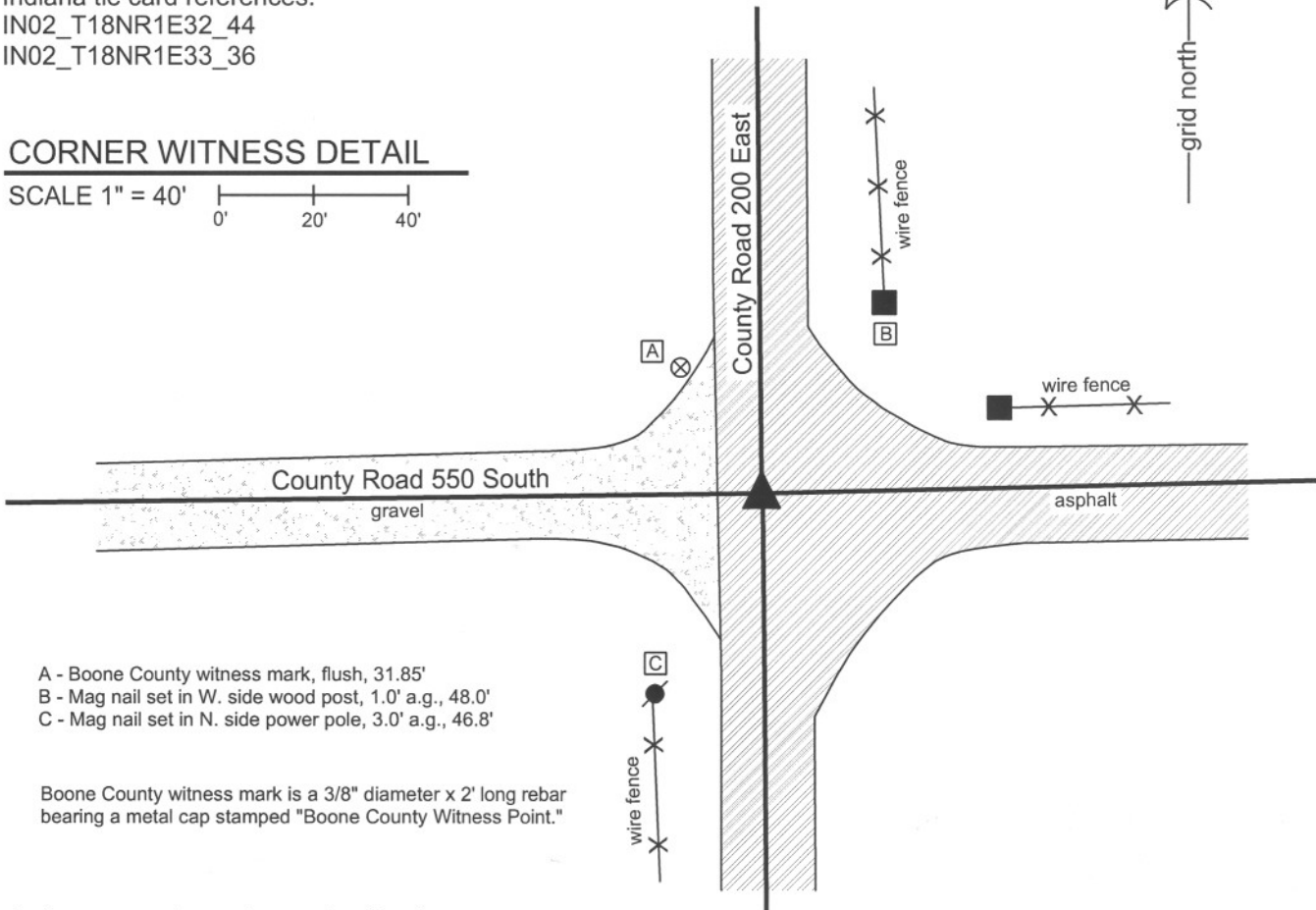
Indiana tie card references:

IN02_T18NR1E32_44

IN02_T18NR1E33_36

CORNER WITNESS DETAIL

SCALE 1" = 40'



- A - Boone County witness mark, flush, 31.85'
- B - Mag nail set in W. side wood post, 1.0' a.g., 48.0'
- C - Mag nail set in N. side power pole, 3.0' a.g., 46.8'

Boone County witness mark is a 3/8" diameter x 2' long rebar bearing a metal cap stamped "Boone County Witness Point."

The harrison monument was set over a stone found.

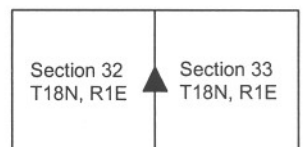
A BCS record of August 19-20, 1867 states "Reestablished from stump of one tree. Set Rock 20,12,12." A BCS tie card dated July 10, 1968 states "no stone." This corner was excavated on November 20, 2009. Prior to excavation a mag nail was found 1 inch deep. Excavation revealed a 5/8 inch rebar found at 3 inches deep, 0.5 foot north and 0.15 foot west of the nail. A section of railroad rail on end was found at 11 inches deep below the rebar. A rock was found at 14 inches deep (8 inches x 7 inches x 5 inches) south and east of the rail. Two more stones were found below this rock, one to the east and one to the west. The east rock was 6 inches x 8 inches x 8 inches. The west rock is the record stone. With 15 inches of the top of the stone exposed it measures 12 inches E-W and 12 inches N-S. The top of the stone is at the top of the clay layer below the road. No specific markings were found on the rock, nor were any mentioned in the 1867 record. The harrison monument was set over the top, center of the record stone. The nail, rebar and rail were removed during excavation. The nail had been 1.1 feet north and 0.25 foot east of the stone. The rebar and rail had been 1.6 feet north and 0.1 foot east of the stone. This corner was originally established as a wood post in June, 1820.



Kenneth E. Hedge
 Kenneth E. Hedge, County Surveyor

James S. Swift
 James S. Swift, IN LS 20200054
 July 14, 2010

Perry Township



PHOTOGRAPHIC DOCUMENTATION

Date of photography: November 20, 2009

The railroad rail found.



The first, top, stone found.



The two lower stones found. View from the west. The record stone is in the foreground.



The two lower stones found. View from the north. The north side of the record stone is exposed.



For details and documentation, refer to related sheet "Section Corner Record."

SECTION CORNER RECORD

BOONE COUNTY SURVEYOR'S OFFICE

SE 600-100



State Plane grid coordinates NAD83 (CORS96):

Corner 1: North: 1713912.40 East: 3130062.41 (U.S. survey feet)
 Corner 2: North: 1713916.51 East: 3130233.30 (U.S. survey feet)

Type of monument: Harrison, 4" disk 'Section Corner'
 Depth: One inch below adjacent road surface

Indiana tie card references:
 IN02_T18NR1E31_80 IN02_T18NR1E32_72
 IN02_T17NR1E06_08 IN02_T17NR1E05_00

- ① S.E. Corner, Section 31
S.W. Corner, Section 32
T 18 N, R 1 E
- ② N.W. Corner, Section 5
N.E. Corner, Section 6
T 17 N, R 1 E

Distance between monuments = 170.94'
 Original federal closing distance = 259 links (170.94')

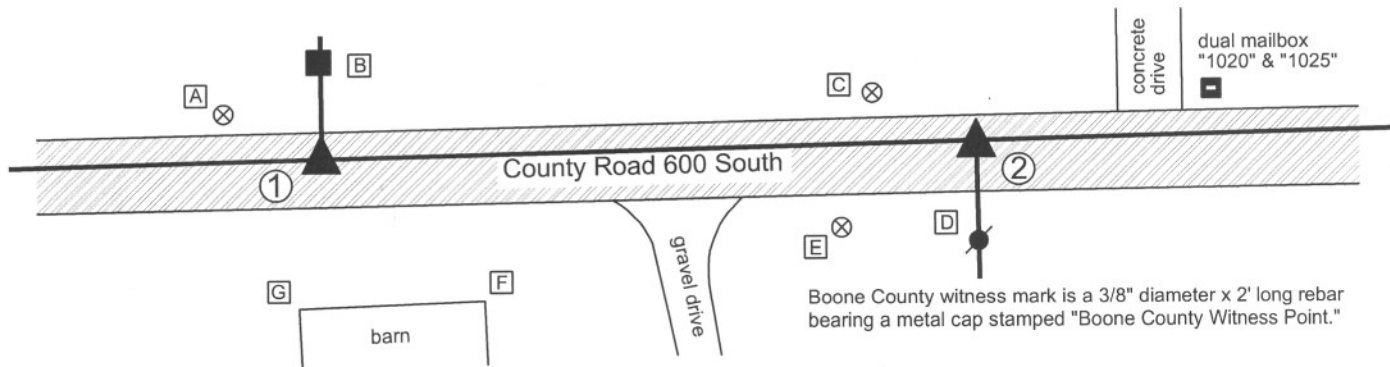
CORNER WITNESS DETAIL

SCALE 1" = 50'

- A - Boone County witness mark, flush,
28.36' to corner 1, 196.71' to corner 2
- B - Mag nail set in S. side, wood post, 2' a.g.,
22.62' to corner 1, 172.36' to corner 2

- C - Boone County witness mark, flush,
144.93' to corner 1, 29.80' to corner 2
- D - Mag nail set in N. side power pole, 1' a.g.,
172.23' to corner 2, 24.01' to corner 2

- E - Boone County Witness Point, flush,
137.02' to corner 1, 41.82' to corner 2
- F - N.E. corner barn (metal siding),
56.23 to corner 1, 135.37' to corner 2
- G - N.W. corner barn (metal siding),
39.77' to corner 1, 182.25'

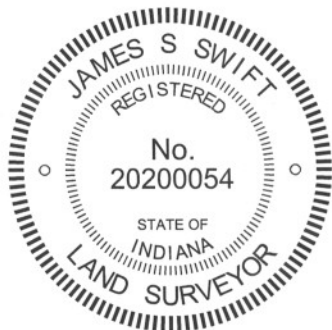


Boone County witness mark is a 3/8" diameter x 2' long rebar bearing a metal cap stamped "Boone County Witness Point."

The Harrison monument at corner 1 was set over a stone found. The Harrison monument at corner 2 was set along the township line as determined by corner 1 and the standard corner to the east, immediately north of a found stone and at the original federal closing distance of 259 links. A BCS record of March 7, 1870 states "Reestablished from stumps. Set Rock 12,8,6 + mark." No specific descriptions of corner 2 were found in the BCS Surveyor's Record beyond the original establishment of the corner at 259 links east of corner 1 on June 8, 1820.

A pair of BCS tie cards dated May 19, 1994 show the respective corners as railroad spikes but show no distance or cross ties between them. Corner 1 was excavated on July 2, 2012. Prior to excavation a railroad spike was found at 3 inches deep. Excavation revealed the stone described in the 1870 record at 21 inches deep, 3.3 feet north and 0.2 foot east of the railroad spike. The stone, as found, was leaning to the west and appeared to have been disturbed. The entire stone was exposed and stood up to what appeared to be the position it would have held prior to being disturbed. As stood up, the top of the stone protruded slightly into the bottom of the road bed and the stone measured 12 inches tall by 8 inches E-W by 6 inches N-S. Part of an etched chisel mark was visible on top, but the remainder of the mark appeared to have been broken, along with the western edge of the top of the stone. The stone was left in place, as stood up vertical, and the Harrison monument was set over the top, high point and remnants of the etched "+."

Corner 2 was excavated on July 11, 2012. Prior to excavation at this corner a railroad spike was found at 2 inches deep, 3 feet south of the township line defined by the stone at corner 1 and the stone at the standard corner to the east. Excavation revealed a stone found at 12 inches deep, approximately below the found railroad spike. The stone is embedded in the clay layer below the road, protruding 3 inches into the base of the road bed. With 4 inches of the stone exposed, it measured 5 inches E-W by 5 inches N-S. The stone was found to be 7 inches tall along the vertical east edge. The corner was established along the township line, 3 feet north of the stone, at the record closing distance of 259 links, which placed the corner immediately north of the stone. The stone was left in place. A Harrison monument was set at the position of the corner as established along the township line.



Kenneth E. Hedge
 Kenneth E. Hedge, County Surveyor

James S. Swift
 James S. Swift, IN LS 20200054
 January 15, 2013

Harrison Twp	Perry Twp
Section 31 T18N, R1E	Section 32 T18N, R1E
Section 6 T17N, R1E	Section 5 T17N, R1E

PHOTOGRAPHIC DOCUMENTATION

Date of photography: July 2 & July 11, 2012

The stone witnessing the closing corner (corner 2). View from above and east.
Note: this stone was not held as the corner.



Close-up of the stone witnessing corner 2.



The stone at the standard corner (corner 1) and the post on the north side of Cnty Rd 600 South.



The stone at corner 1 as found, apparently leaning towards the west.



The stone at corner 1 stood up in the orientation at which it was likely originally set.



For details and documentation, refer to related sheet "Section Corner Record."

SECTION CORNER RECORD

BOONE COUNTY SURVEYOR'S OFFICE

SE 600-150

State Plane grid coordinates NAD83 (CORS96):

Corner 1: North: 1713976.26 East: 3132734.44 (U.S. survey feet)

Corner 2: North: 1713979.83 East: 3132884.91 (U.S. survey feet)

Type of monument: Harrison, 4" disk 'Section Corner'

Depth: One inch below adjacent road surface

Indiana tie card references:

IN02_T18NR1E32_76

IN02_T17NR1E05_04

① S. 1/4 Corner, Section 32
T 18 N, R 1 E

② N. 1/4 Corner, Section 5
T 17 N, R 1 E

Distance between monuments:
150.5' (228 links per 1868 record)

CORNER WITNESS DETAIL

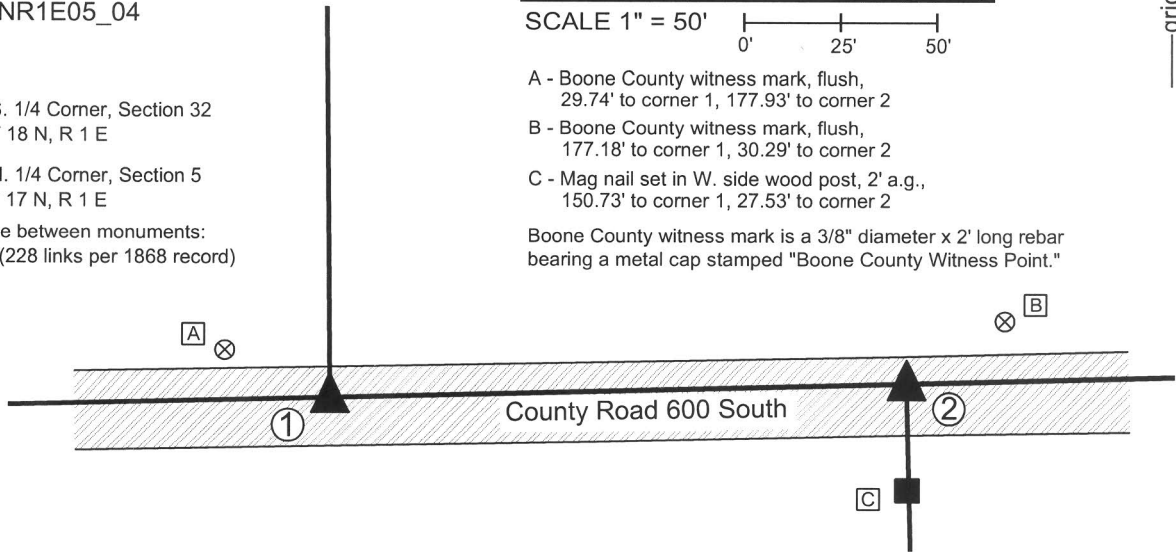
SCALE 1" = 50'

A - Boone County witness mark, flush,
29.74' to corner 1, 177.93' to corner 2

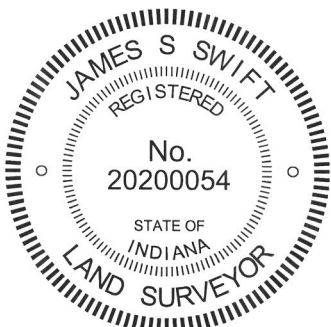
B - Boone County witness mark, flush,
177.18' to corner 1, 30.29' to corner 2

C - Mag nail set in W. side wood post, 2' a.g.,
150.73' to corner 1, 27.53' to corner 2

Boone County witness mark is a 3/8" diameter x 2' long rebar
bearing a metal cap stamped "Boone County Witness Point."

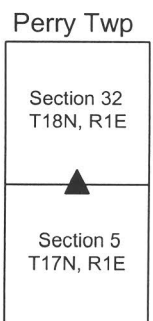


The harrison monument at corner 1 was set over a stone found. The harrison monument at corner 2 was set at a calculated position. A BCS record of August 19-20, 1867 states, with respect to corner 1, "Reestablished set Rock 16,15,15." A BCS record of March 5-6, 1868 states, with respect to corner 2, "established 228 links East of qtr sect cor for Sect 32. Rock marked +." No recent BCS tie cards were found for these corners. Excavation was performed at this corner on July 3, 2012. Prior to excavation, a railroad spike was found in the vicinity of corner 1. No monumentation was found near corner 2, though a wood post on the south side of the road provided substantial evidence of the general location of corner 2. Excavation was performed at corner 2 first, due to the presence of good evidence. Excavation of an area extending 2.5 feet in all cardinal directions from the point in the center of County Road 600 south which is immediately north of the aforementioned post on the south side of the road revealed no further evidence. The bottom of the road bed was found at 15 inches deep. Excavation was performed to approximately 20 inches deep. Excavation at corner 1 did reveal a stone found. The stone is at 13 inches deep, embedded in the clay layer below the road and protruding approximately 2 inches into the bottom of the road bed. With the top 8 inches of the stone exposed, it measured 15 inches E-W by 5 inches N-S. The stone was clearly vertical but was oriented slightly SE-NW. No specific marks were found on the stone, nor were any called for in the 1867 record. The stone is 15x5 inches rather than 15x15 as recorded in the BCS Surveyor's Record. It is believed that this is the stone described in that record and that the second "15" was written in error. The position of the stone fits well with distances shown in the 1867 record, relative to the location of the corners to the east and west. A harrison monument was set of the top, center of the stone. The railroad spike, removed during excavation, had been 1.5 feet west of this point. Additional excavation was performed at corner 1 on June 11, 2013, in search of the "rock marked +" called for in the 1868 record. An area extending 2 feet further than the original area of excavation was exposed to the clay layer below the road. No further evidence of corner 2 was found. The combined area of excavation at corner 2 encompassed the area in which it might reasonably be expected to find the stone, given the data shown on the 1868 record. Corner 2 was established on the township line, as determined by corner 1 and the standard corner 1/2 mile east at a point 228 links (150.48 feet) east of Corner 1. A harrison monument was set at this position on June 11, 2013. Corner 1 was originally established in 1819. Corner 2 was not monumented by the original federal surveyors.



Kenneth E. Hedge
Kenneth E. Hedge, County Surveyor

James S. Swift
James S. Swift, IN LS 20200054
February 5, 2015



PHOTOGRAPHIC DOCUMENTATION

Date of photography: July 5, 2012

The stone at the stanard corner as first exposed.



The area of excavation at the closing corner.



The stone at the stanard corner more fully exposed. View from above and west.



View from the east, looking across the stone and west along County Road 600 South.



The stone at the stanard corner. View from above and south.



For details and documentation, refer to related sheet "Section Corner Record."

SECTION CORNER RECORD

SE 600-200

BOONE COUNTY SURVEYOR'S OFFICE

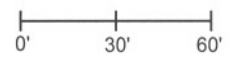
State Plane grid coordinates NAD83 (NSRS 2007):

Corner 1: North: 1714039.90 East: 3135409.57 (U.S. survey feet)

Corner 2: North: 1714043.09 East: 3135538.23 (U.S. survey feet)

CORNER WITNESS DETAIL

SCALE 1" = 60'



Corner 1:

Type of monument: Harrison, 4" disk 'Section Corner'

Depth: One inch below adjacent road surface

Corner 2:

Type of monument: 5/8 inch rebar with metal cap stamped "Boone County Surveyor"

Depth: Flush with adjacent ground.

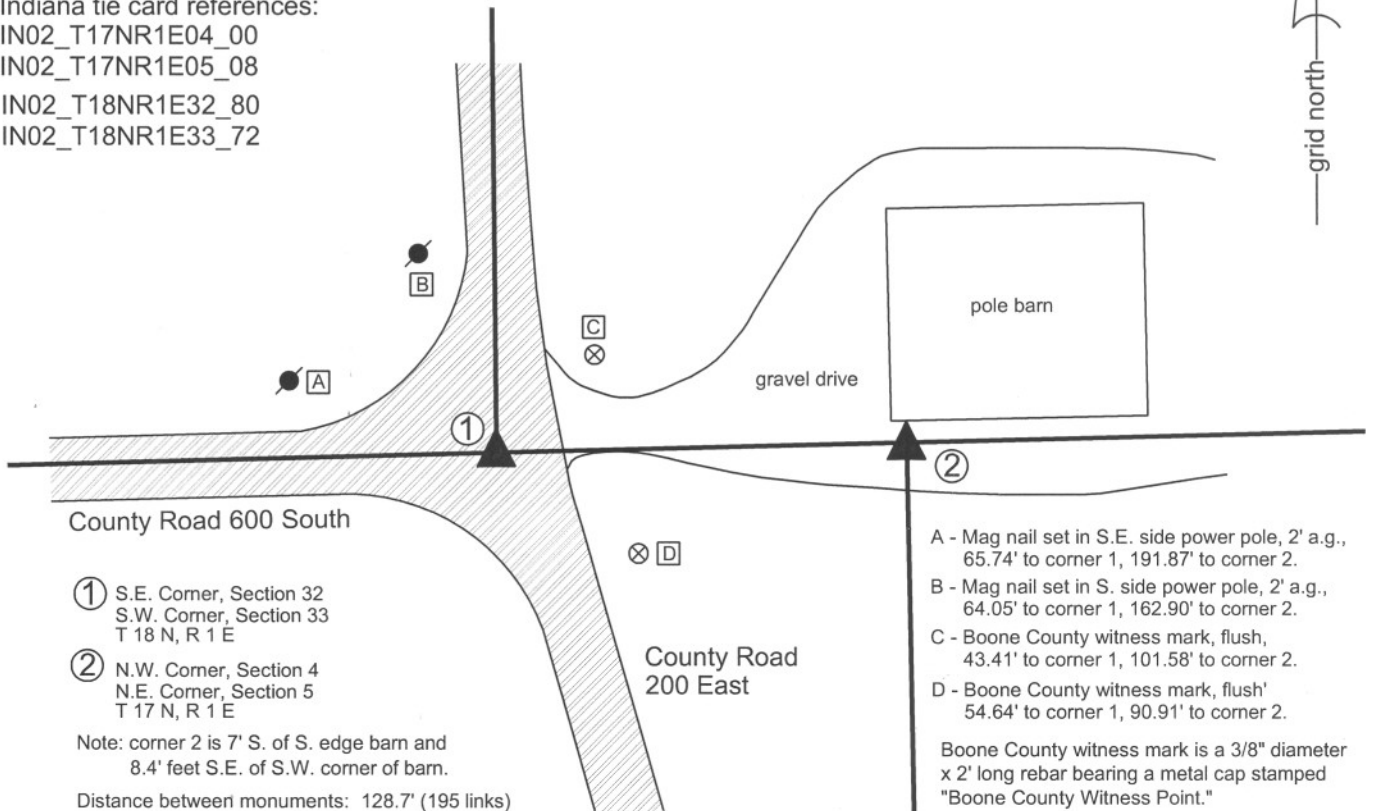
Indiana tie card references:

IN02_T17NR1E04_00

IN02_T17NR1E05_08

IN02_T18NR1E32_80

IN02_T18NR1E33_72



County Road 600 South

① S.E. Corner, Section 32
S.W. Corner, Section 33
T 18 N, R 1 E

② N.W. Corner, Section 4
N.E. Corner, Section 5
T 17 N, R 1 E

Note: corner 2 is 7' S. of S. edge barn and
8.4' feet S.E. of S.W. corner of barn.

Distance between monuments: 128.7' (195 links)

County Road
200 East

A - Mag nail set in S.E. side power pole, 2' a.g.,
65.74' to corner 1, 191.87' to corner 2.

B - Mag nail set in S. side power pole, 2' a.g.,
64.05' to corner 1, 162.90' to corner 2.

C - Boone County witness mark, flush,
43.41' to corner 1, 101.58' to corner 2.

D - Boone County witness mark, flush'
54.64' to corner 1, 90.91' to corner 2.

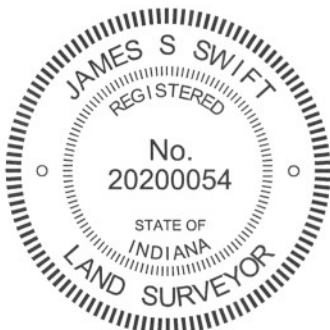
Boone County witness mark is a 3/8" diameter
x 2' long rebar bearing a metal cap stamped
"Boone County Witness Point."

The harrison monument at corner was set in place of a railroad rail found. The capped rebar at corner 2 was set in a calculated position.

A BCS record of August 19, 1867 for corner 1 states "Reestablished from one tree. Set a Rock 16,14,8." A BCS tied card for the same corner, dated July 10, 1968 states "Stone found." No specific references were found for corner 2 beyond the original establishment of the corner in 1820.

Excavation at corner 1 yielded a railroad rail found at 9 inches below grade. No other evidence was found. Though the tie card merely states "stone found," it is known that the standard procedure of BCS field crews from that era was to remove a stone, if found, and replace it with a 30 inch length of railroad rail set on end. It is believed that the found rail is in the same position as the stone found in 1968. The rail was accepted as the best evidence of corner 1. The rail was removed and a harrison monument was set in its place. No specific evidence was found in the immediate vicinity of corner 2. This corner falls adjacent to a large pole barn and significant excavation was not performed. Corner 2 was established on the range line at the record government closing distance of 195 links (128.7 feet) east of corner 1. This position fits well with the extended roadway to the south. A 5/8 inch diameter rebar, 3 feet long, with an aluminum cap stamped 'Boone County Surveyor' was set at corner 2.

Corner 1 was originally established as a wood post in 1819. Corner 2 was originally established as a wood post in 1821.



Kenneth E. Hedge
Kenneth E. Hedge, County Surveyor

James S. Swift
James S. Swift, IN LS 20200054
July 25, 2011

Worth Township

Section 32 T18N, R1E	Section 33 T18N, R1E
Section 5 T17N, R1E	Section 4 T17N, R1E