

SECTION CORNER RECORD

NE 600-600

BOONE COUNTY SURVEYOR'S OFFICE

State Plane grid coordinates NAD83 (2011):

Corner 1: North: 1777836.81 East: 3155968.42 (U.S. survey feet)

Type of monument: Brass plug in monument box, INDOT Type B

Depth: Flush with adjacent road surface

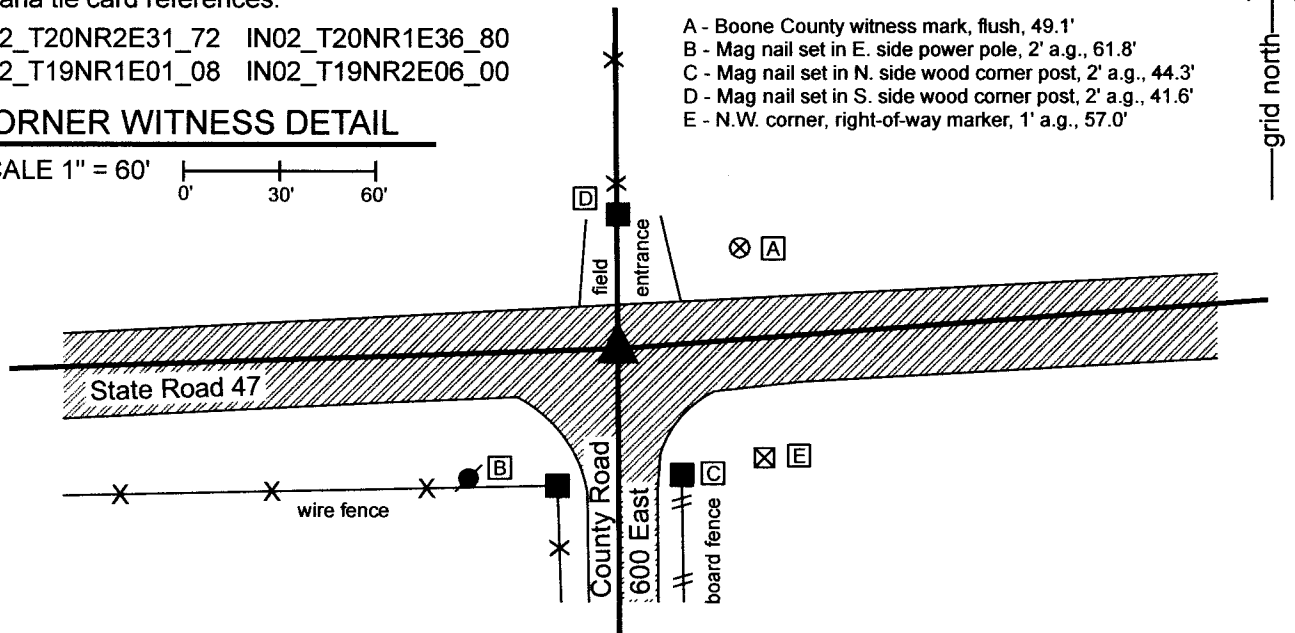
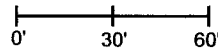
Indiana tie card references:

IN02_T20NR2E31_72 IN02_T20NR1E36_80

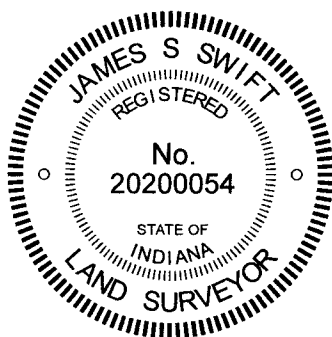
IN02_T19NR1E01_08 IN02_T19NR2E06_00

CORNER WITNESS DETAIL

SCALE 1" = 60'



The INDOT Type B monument was found in place and held as marking the corner. This corner represents the common corner to four townships, originally set in 1819. A BCS entry of April 1-3, 1857 which is referenced to Section 6, T19N, R2E states "Set Rock 9 by 14 in." A BCS entry of April 15, 1872 which is referenced to Section 31, T20N, R2E states "Reestablished. Rock was set." A BCS tie card dated June 22, 2005 calls the corner as a Type C Monument. Several surveys by Jerry L. Carter, including surveys recorded as Instruments 0206765 and 0208420 (Boone County Recorder) show the corner as "PK Nail/Rebar(fnd)." The current descriptions of several of the various properties in the northwest quarter of Section 6 appear to have been created from these surveys or other surveys by Carter. The monument found, being an INDOT Type B monument, appears to be the same monument as the Type C monument referenced on the 2005 tie card and appears to be in the same position as the PK Nail/Rebar referenced on the Carter surveys. It is noted that the line dividing Townships 19 and 20 North, Range 1 East falls well south of the line dividing Townships 19 North and 20 North, Range 2 East. A significant bend occurs at the subject corner and the line between the southwest quarter of Section 31, T20N, R2E and the northwest quarter of Section 1, T19N, R2E bears in a northeasterly direction. The original federal notes for Townships 19 North, Ranges 1 and 2 East call for a distance of 78.46 chains for the final N-S line between those townships. The relative positions of the various found corners in this area fit reasonably well with that distance. Hence, the substantial bend in S.R. 47 appears to be a result of the road following the section lines, as they were originally laid out. The corner, as currently monumented, falls at the approximate center of the intersection of S.R. 47 and C.R 600 East to the south. An interpretation of the position of the corner as being at the point of intersection of the extended centers of S.R. 47 to the east and west (as evidence of the township lines to the east and west) would place the corner approximately 4 feet south of the monumented position, rather than in the physical center of the intersection, due to a short transitional curve connecting the straight lines to the east and west. However, the corner as currently monumented has been held for local surveys. Sufficient information to prove a different position further south was not found in the BCS Records or in the field. As this corner falls in a state road, excavation was not performed, hence the stone called in the 1857 and 1872 BCS records was not found. The found INDOT Type B monument was held as marking the corner. The precise date when this monument was set in place of the previous nail and rebar is not known.



Kenneth E. Hedge
 Kenneth E. Hedge, County Surveyor

James S. Swift
 James S. Swift, IN LS 20200054

December 14, 2022

Clinton Township	Marion Township
Section 36 T20N, R1E	Section 31 T20N, R2E
Section 1 T19N, R1E	Section 6 T19N, R2E

SECTION CORNER RECORD

BOONE COUNTY SURVEYOR'S OFFICE

NE 600-650



State Plane grid coordinates NAD83 (2011):

Corner 1: North: 1778051.97 East: 3158861.36 (U.S. survey feet)

Corner 2: North: 1778043.65 East: 3158749.47 (U.S. survey feet)

Type of monument (1): Mag Nail Set

Type of monument (2): Brass plug in monument box, INDOT Type B

Depth: Flush with adjacent road surface

① South Quarter Corner
Section 31, T 20 N, R 2 E
Mag Nail set

② North Quarter Corner
Section 6, T 19 N, R 2 E
INDOT Type B
Monument Found

Distance between monuments:
112.2' (170 links)

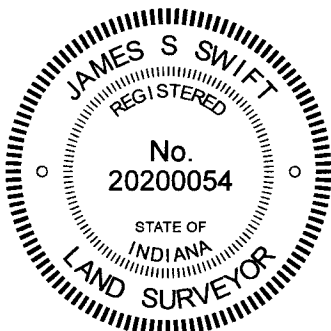
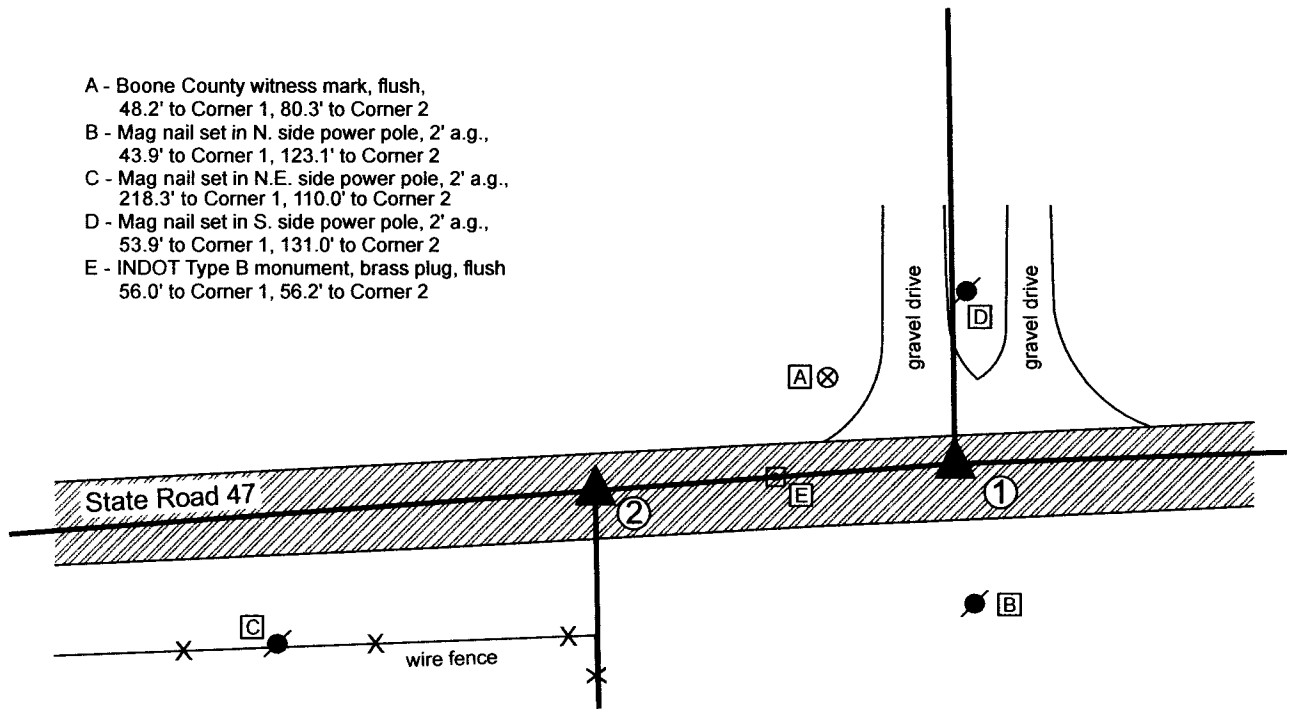
Indiana tie card references:

IN02_T20NR2E31_76 IN02_T19NR2E06_04

CORNER WITNESS DETAIL

SCALE 1" = 60'

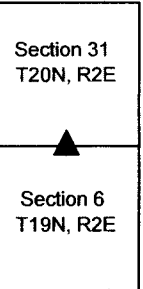
- A - Boone County witness mark, flush, 48.2' to Corner 1, 80.3' to Corner 2
- B - Mag nail set in N. side power pole, 2' a.g., 43.9' to Corner 1, 123.1' to Corner 2
- C - Mag nail set in N.E. side power pole, 2' a.g., 218.3' to Corner 1, 110.0' to Corner 2
- D - Mag nail set in S. side power pole, 2' a.g., 53.9' to Corner 1, 131.0' to Corner 2
- E - INDOT Type B monument, brass plug, flush 56.0' to Corner 1, 56.2' to Corner 2



Kenneth E. Hedge
Kenneth E. Hedge, County Surveyor

James S. Swift
James S. Swift, IN LS 20200054
December 14, 2022

Marion
Township



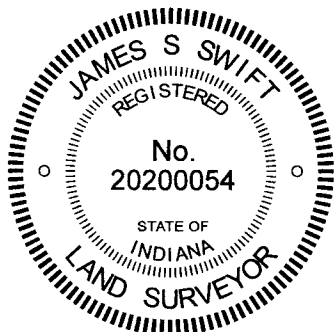
SECTION CORNER RECORD

NE 600-650

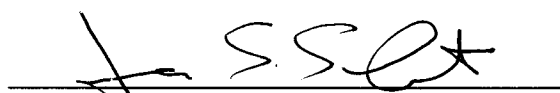
BOONE COUNTY SURVEYOR'S OFFICE

WRITTEN DOCUMENTATION

The INDOT Type B monument at Corner 2 was found in place and held as marking the corner. The position of Corner 1 was computed with respect to the position of Corner 2 and information in the BCS Surveyor's Record. Corner 1 was represents an original corner, as set by the federal government in 1819. Corner 2 is not an original federal corner and should be established at the same closing distance as is reported at the northeast corner of Section 6, being 170 links west. These corners are both referenced in the BCS Surveyor's record in entries of early April, 1857. An entry of April 1-3, 1857 states, with respect to Corner 2, "Set Rock 14x18." Corner 1 is referenced in an entry in of April 4, 1857. This entry states "Reestablished 170 links East of corner to Sec. 6. Set Rock 16 by 24." Clearly, the two corners were set at 170 links (112.2 feet) apart in 1857, in accordance with federal guidelines. However, a BCS tie card dated June 22, 2005 which was produced by Anderson and Associates shows the two corners as separated by half of that distance, 56.10 feet. This document shows INDOT Type C monuments at both corners. The western of the two monuments is shown as being in line with a fence to the south. These monuments were found in the field, as shown on the tie card. Clearly, the western monument represents a reasonable interpretation of the position of Corner 2, the closing corner, as it agrees with evidence to the south and also fits reasonably well with the relative positions of other proximate corners per the original federal distances. The position of the monument purported to mark Corner 1 is clearly erroneous, as it falls well west of the available evidence of the line between the southeast and southwest quarters of Section 31, in the form of an existing power line between two existing gravel drives which service separate properties, and fails to line up with evidence of the line between the northeast and northwest quarters. It is clearly evident that whoever established the positions for the corners as monumented and as shown on the 2005 BCS tie card set Corner 1 with respect to Corner 2 as established at the average of the closing distances for the northeast and northwest corners of Section 6 (0 links and 170 links, respectively), rather than maintaining the separation of 170 links, per federal guidelines and per the 1857 BCS record. Two surveys by Anderson and Associates, recorded as Instruments 0206764 and 0208420, in the Office of the Boone County Recorder, show the corners at 56.10 feet (85 links) apart, but do not call out monumentation at these corners. Notably, these surveys only pertain to land in Section 6, not land in Section 31. Hence, while they show both corners, the only corner which is actually relevant to those surveys is the closing corner, or Corner 2 as referenced hereon. Had these surveys been addressing matters of land in Section 31, the obvious fact that the point 56.10 feet east of Corner 2 misses the evidence of occupation to the north may have been noticed. These surveys were signed by Jerry L. Carter, LS No. 0350. A subsequent survey by Mr. Carter, working for his own company, Carter Land Consultants, recorded in Survey Book 12, page 9, shows the '1/4 Section Line' between the southeast and southwest quarters of Section 31 much more in agreement with the position 170 links east of Corner 2. Meanwhile, Anderson and Associates produced a tie card for this office which shows the two corners as Type C Monuments 56.10 feet apart. When the INDOT monuments (being actually Type B not Type C monuments) were set is not known, but it appears they were set between the 2002 Anderson surveys and the 2005 tie cards, most likely based on information supplied by Anderson and Associates. The Type B monument at Corner 2 was accepted as marking that corner. As noted above, the Type B monument 56 feet east thereof is not accepted as marking Corner 1. As for the precise position of Corner 1, the deeds for the parcels in Section 31, and monumentation marking corners thereof, were analyzed. A distinct pattern of referencing the properties to the southeast corner of the west half of the northeast quarter and not specifically calling for the quarter section line was noticed. Calls to an east line of the Jeffers property (D.R. 256, page 661-663) are vague, insofar as that description calls for both the quarter section line and a line 1 rod west thereof and originally included land in both the southeast and southwest quarters of Section 31. Rebars bearing the cap of Carl Anderson were found marking corners of the Riley property (Instrument 2018004281), but could not be reconciled as positively defining the quarter section line. That descriptions calls for 'partially along an existing fence' but contains significant uncertainties based on the relative positions of found monuments and deed calls. An easement description in the Carter Survey recorded in Survey Book 12, page 9 calls for the lines of the Law property, Riley property and quarter section line, which calls do harmonize with each other. Ultimately, given the lack of clear calls for the quarter section line in the descriptions for the properties in the southeast and southwest quarters of Section 31, it was determined that evidence of occupation (found only in the form of the power line between the two drives) and monumentation (found Anderson-capped rebars) could not be held to determine the position of Corner 1. No excavation was performed at these corners as they fall in a state road. The stones called for in the 1857 BCS records were not found. Corner 1 was established at the record closing distance of 170 links east of the Type B monument at Corner 2. This point falls between the two drives which access properties in the different quarter sections, but slightly west of the power line servicing a property in the northwest quarter. A Mag Nail was set at this position on December 13, 2022. This document will be presented to INDOT with request for a permanent stable monument be established at this position. 56 feet of uncertainty east-west is attached to the position of this corner, based on existing monumentation and the 2005 BCS tie card. Approximately 6 feet of uncertainty east-west is attached to the position of this corner based on found monumentation which may or may not have been considered to have marked the line the southeast and southwest quarters of Section 31.




Kenneth E. Hedge, County Surveyor


James S. Swift, IN LS 20200054

December 14, 2022

Marion
Township

Section 31
T20N, R2E

▲
Section 6
T19N, R2E

SECTION CORNER RECORD

NE 600-700

BOONE COUNTY SURVEYOR'S OFFICE

State Plane grid coordinates NAD83 (2011):

Corner 1: North: 1778142.82 East: 3161505.71 (U.S. survey feet)

Corner 2: North: 1778138.89 East: 3161393.50 (U.S. survey feet)

Type of monuments (1&2): Brass plug in monument box, INDOT Type B

Depth: Flush with adjacent road surface

Indiana tie card references:

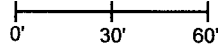
IN02_T20NR2E31_80 IN02_T20NR2E32_72

IN02_T19NR2E06_08 IN02_T19NR2E05_00



CORNER WITNESS DETAIL

SCALE 1" = 60'

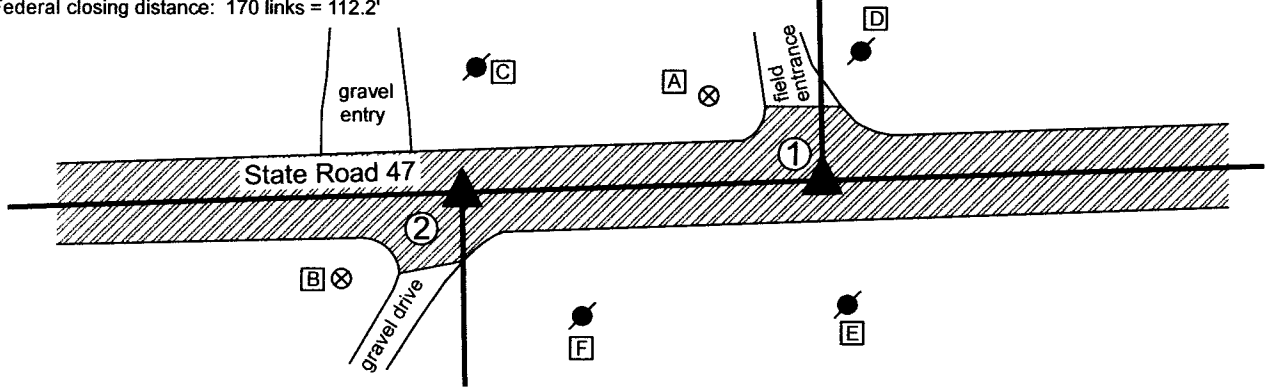


- ① S.E. Corner, Section 31
S.W. Corner, Section 32
T 20 N, R 2 E

- ② N.E. Corner, Section 6
N.W. Corner, Section 5
T 19 N, R 2 E

Distance between monuments: 112.28'
Federal closing distance: 170 links = 112.2'

- A - Boone County witness mark, flush, 44.2' to Corner 1, 82.4' to Corner 2
- B - Boone County witness mark, flush, 152.9' to Corner 1, 46.2' to Corner 2
- C - Mag nail set in S side PWP, 2' a.g. 113.5' to Corner 1, 39.3' to Corner 2
- D - Mag nail set in S side PWP, 2' a.g. 41.0' to Corner 1, 131.0' to Corner 2
- E - Mag nail set in N side PWP, 2' a.g. 37.2' to Corner 1, 124.3' to Corner 2
- F - Mag nail set in N side PWP, 2' a.g. 84.6' to Corner 1, 51.9' to Corner 2

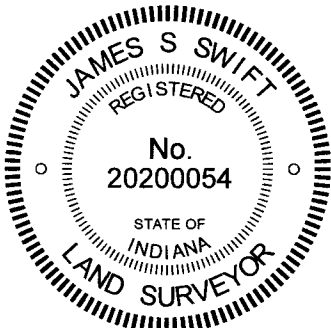


The INDOT Type B monuments were found in place and held as marking the respective corners. Corner 1 was originally set by the federal government in 1819. Corner 2 was set in 1821, 170 links west of Corner 1.

A BCS record of May 1-2, 1871 states, with respect to Corner 2, "Reestablished from stump and roots of Ash. Set a Rock 15.12.7+." No specific descriptions of Corner 1 were found in the BCS Surveyor's Record beyond the original federal notes of 1819. A BCS tie card dated June 22, 2005 shows both corners as Type C monuments. A survey by Jerry L. Carter, LS No S0350, recorded as Instrument 0217197 in the Office of the Boone County Recorder shows Corner 2 as a PK Nail found.

The found monuments, being INDOT Type B monuments, appear to be the same monuments in the same positions as shown on the 2005 BCS tie cards. Corner 2 appears to be in the same position as the PK Nail called for in the Carter survey, based on the relative locations of other monuments shown on that survey. The precise date of the installation of the current monuments is not known. The two monuments are separated by approximately the same distance of 170 links (112.2 feet) as called for in the original federal notes. No excavation was performed at these corners, as they fall in a state road.

The found Type B monuments were held as marking the corners.



Kenneth E. Hedge
Kenneth E. Hedge, County Surveyor

James S. Swift
James S. Swift, IN LS 20200054

December 14, 2022

Marion Township

Section 31 T20N, R2E	Section 32 T20N, R2E
Section 6 T19N, R2E	Section 5 T19N, R2E

SECTION CORNER RECORD

NE 650-600

BOONE COUNTY SURVEYOR'S OFFICE

State Plane grid coordinates NAD83 (2011):

Corner 1: North: 1780476.53 East: 3155942.15 (U.S. survey feet)

Corner 2: North: 1780549.36 East: 3155941.53 (U.S. survey feet)

Corner 1: Harrison, 4" disk 'Section Corner', 2 inches above ground

Corner 2: Harrison, 4" disk 'Section Corner', 4 inches above ground

Indiana tie card references:

IN02_T20NR1E36_44 IN02_T20NR2E31_36

CORNER WITNESS DETAIL

SCALE 1" = 40'

The Harrison monument at Corner 2 was set in place of a stone found. The Harrison monument at Corner 1 was set on the range line as defined by Corner 2 and the northeast corner of Section 36 (see BCS Corner NE 700-600 STD) adjacent to an ancient wood corner post.

Both corners contain similar references in the BCS Surveyor's Record. An entry of October 25, 1865 states, with respect to Corner 2, "Established 107 links North of Qtr. Sect. Cor. for Sect 36. Set Stake." An entry with no specific date, but which appears to have been recorded after 1882, states, with respect to Corner 1, "Reestablished, Oak stake 107 South of "H" in sec. 31, Twp. 20 N, Range 2 East. Found from witness stump..." The referenced distance of 107 links represents half the closing distance reported in the federal notes for the northwest corner of Section 31.

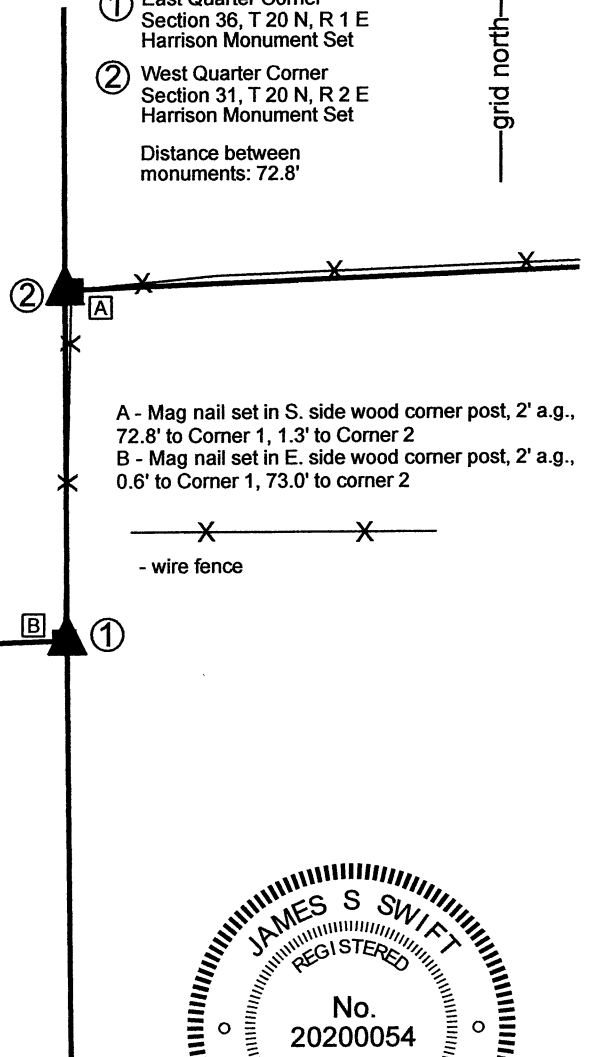
These corners have been investigated several times over several years. Wood corner posts which provide evidence of each corner were found, the southerly post has fence to the north and west attached to it, the northerly post has fence to the east and south. The posts are approximately 2.5 feet further apart than the called-for separation of 107 links. The posts also do not line up well in the east-west dimension. Reconnaissance and positioning of accessory evidence of fence and posts to the west of Corner 1 and east of Corner 2 did not solve the mystery of why the posts are further apart than 107 link distance nor did it make evident which of the posts may represent the most reliable evidence of the corner. A stone found at the southwest corner of the post providing evidence of Corner 2 represented the only non-post monument found. The stone measured 13 inches E-W by 6 inches N-S by 6 inches tall, with a distinct high spot on the top. Stakes, not stones, are called in the previous BCS records, but this stone did appear that it may have been set to mark the corner. In any case, the stone fit well with the found evidence, being adjacent to the old post and providing a solution for the range line which is a best-fit solution with respect to the east-west positions of the two posts. The stone was held as marking Corner 2 and was replaced with a Harrison monument on December 14, 2021. The position of Corner 1 was established on the southerly prolongation of the line connecting the Harrison monument at the northeast corner of Section 36 with Corner 2, at the same distance as separates the found stone and the post providing evidence of Corner 1. This position fell at the east edge of the old wood corner post. A Harrison monument was set at this position, also on December 14, 2021. It is noted that the distance of 72.8 feet which separates the monuments is 2.2 feet longer than the reported distance of 107 links.

Corner 1 was originally established as a wood post in 1819. Corner 2 is not an original federal corner.

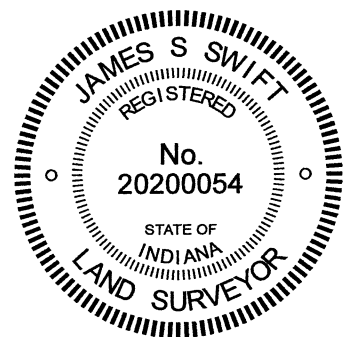
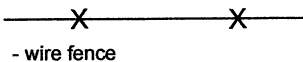
① East Quarter Corner
Section 36, T 20 N, R 1 E
Harrison Monument Set

② West Quarter Corner
Section 31, T 20 N, R 2 E
Harrison Monument Set

Distance between
monuments: 72.8'



A - Mag nail set in S. side wood corner post, 2' a.g., 72.8' to Corner 1, 1.3' to Corner 2
B - Mag nail set in E. side wood corner post, 2' a.g., 0.6' to Corner 1, 73.0' to corner 2



Kenneth E. Hedge, County Surveyor

James S. Swift, IN LS 20200054

December 20, 2021

Clinton Township	Marion Township
Section 36 T20N, R1E	Section 31 T20N, R2E

SECTION CORNER RECORD

NE 700-600

BOONE COUNTY SURVEYOR'S OFFICE

State Plane grid coordinates NAD83 (2011):

Corner 1: North: 1783137.43 East: 3155919.39 (U.S. survey feet)

Type of monument: Harrison, 4" disk 'Section Corner'

Depth: Three inches above surrounding ground

Indiana tie card references:

IN02_T20NR2E30_72 IN02_T20NR1E25_80

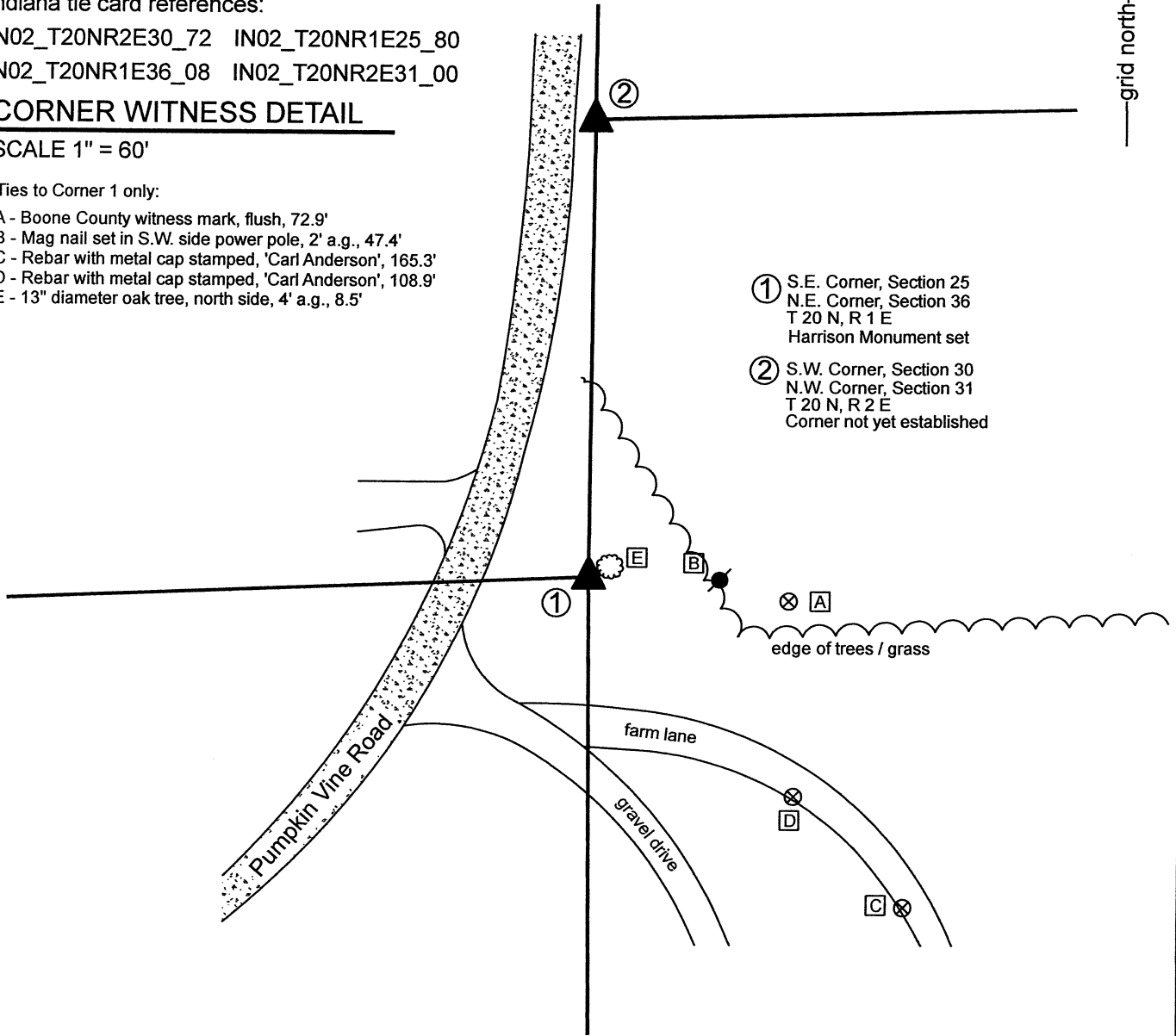
IN02_T20NR1E36_08 IN02_T20NR2E31_00

CORNER WITNESS DETAIL

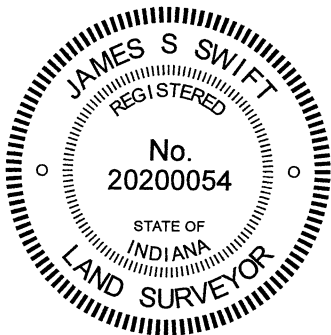
SCALE 1" = 60'

Ties to Corner 1 only:

- A - Boone County witness mark, flush, 72.9'
- B - Mag nail set in S.W. side power pole, 2' a.g., 47.4'
- C - Rebar with metal cap stamped, 'Carl Anderson', 165.3'
- D - Rebar with metal cap stamped, 'Carl Anderson', 108.9'
- E - 13" diameter oak tree, north side, 4' a.g., 8.5'



- ① S.E. Corner, Section 25
N.E. Corner, Section 36
T 20 N, R 1 E
Harrison Monument set
- ② S.W. Corner, Section 30
N.W. Corner, Section 31
T 20 N, R 2 E
Corner not yet established



Kenneth E. Hedge
Kenneth E. Hedge, County Surveyor

James S. Swift
James S. Swift, IN LS 20200054

Clinton Township	Marion Township
Section 25 T20N, R1E	Section 30 T20N, R2E
Section 36 T20N, R1E	Section 31 T20N, R2E

SECTION CORNER RECORD

BOONE COUNTY SURVEYOR'S OFFICE

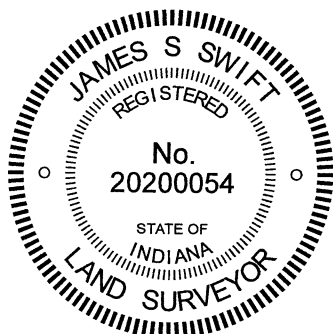
NE 700-600

WRITTEN DOCUMENTATION


The Harrison monument at Corner 1 was set in place of a rebar found. The precise position of Corner 2 has not been established as of the publication of this document. No specific descriptions of Corner 1 were found in the BCS Surveyor's Record beyond the original establishment of the corner as a wood post in 1819. Corner 2 is referenced in an entry of December 19-21, 1865 which states that the corner was "found by measuring from N.E. corner, Sect. 36." This record does not state what, if any, monument was set at that time nor does it specify by what 'measure' the corner was established.

Substantial reconnaissance was performed with respect to these corners and adjacent private properties to the southeast and southwest in November, 2020. A survey by Ronald A. Wharry, LS No. S0420 dated December 22, 1992, which is not recorded in the Office of the Boone County Recorder but was provided by an adjacent property owner shows Corner 1 as a rebar set and shows Corner 2 at or near a wood corner post. The rebar which set to mark Corner 1 as part of that survey was found in good condition, evidently undisturbed. The position of the monument was confirmed with respect to the relative positions of other monuments shown on the survey. The position of the corner works well with adjacent monuments and deed calls for properties to the southeast, southwest and northwest. A post shown as Corner 2 was also found. It is noted that the distance between the post and the rebar is 165.5 feet, substantially longer than the 213 link (140.6 feet) offset recorded by the federal surveyors in 1822. It is further noted that the position of the rebar marking Corner 1 works well with the available evidence of properties in Range 1 East and that the post appears to work with evidence in Range 2 East.

Probing and manual evidence in the immediate vicinity of the Wharry rebar revealed no stones or further evidence of Corner 1. Manual excavation in the vicinity of the wood post revealed several rocks, none of which appeared to represent corner stones. The Wharry rebar was accepted as the best available evidence of Corner 1 and was replaced with a Harrison monument on December 10, 2020. The position of Corner 2 remains uncertain, pending further investigation as well as excavation of the section corners approximately 1/2 mile north.




Kenneth E. Hedge, County Surveyor


James S. Swift, IN LS 20200054

SECTION CORNER RECORD

NE 700-650

BOONE COUNTY SURVEYOR'S OFFICE

State Plane grid coordinates NAD83 (2011):

CORNER: North: 1783374.22 East: 3158761.61 (U.S. survey feet)

WITNESS: North: 1783374.97 East: 3158761.61 (U.S. survey feet)

Type of monument at corner: Wood corner post.

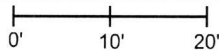
Witness monument: 5/8 inch rebar with metal cap 'Boone County Surveyor'

Indiana tie card references:

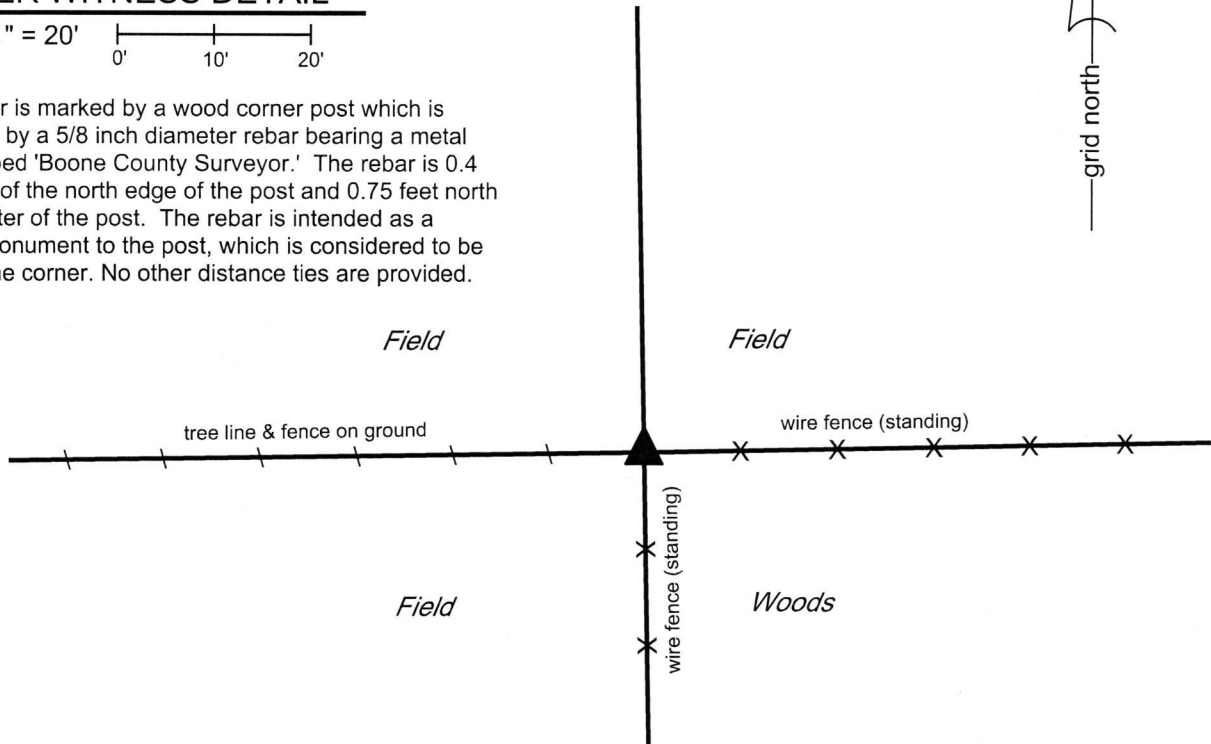
IN02_T20NR2E30_76 IN02_T20NR2E31_04

CORNER WITNESS DETAIL

SCALE 1" = 20'



The corner is marked by a wood corner post which is witnessed by a 5/8 inch diameter rebar bearing a metal cap stamped 'Boone County Surveyor.' The rebar is 0.4 feet north of the north edge of the post and 0.75 feet north of the center of the post. The rebar is intended as a witness monument to the post, which is considered to be marking the corner. No other distance ties are provided.

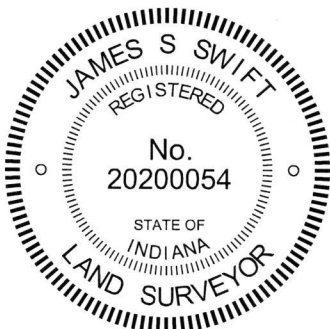


The wood post was found in place. The 5/8 inch rebar is intended as a witness to the wood post and is not intended to mark the corner.

No specific descriptions of this corner were found in the BCS Surveyor's Record. It is mentioned as the terminal point for measurements in a few records from the 1800s. No recent BCS tie cards were found referencing the corner.

This corner was excavated on March 15, 2018. Prior to excavation, a wood post was found at the intersection of standing fences to the south and east and a fence to the west which is mostly on the ground. Probing and manual excavation around the post revealed several stones, none of which bore the characteristics of a stone which had been purposely set to mark the corner. The presence of a tree at the southwest edge of the post rendered substantial probing in that quadrant unfeasible.

The position of the post fits well with proximate corners. The post was accepted as the best available evidence of the original position of the corner and was accepted as marking the corner. As the fences to the south and east are standing and reasonably well maintained, the post was left in place. As noted above, the rebar is intended as a witness to the post. The center of the post is held as marking the corner. This corner was originally established as a wood post in 1821.



Kenneth E. Hedge, County Surveyor

James S. Swift, IN LS 20200054
April 3, 2018

Marion Township

Section 30
T20N, R2E

Section 31
T20N, R2E

SECTION CORNER RECORD

NE 700-700

BOONE COUNTY SURVEYOR'S OFFICE

State Plane grid coordinates NAD83 (2011):

North: 1783440.50 East: 3161404.58 (U.S. survey feet)

Type of monument: 5/8" diameter rebar with aluminum cap stamped 'Boone County Surveyor'

Depth: Fourteen inches below surrounding ground

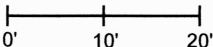
Indiana tie card references:

IN02_T20NR2E29_72 IN02_T20NR2E30_80

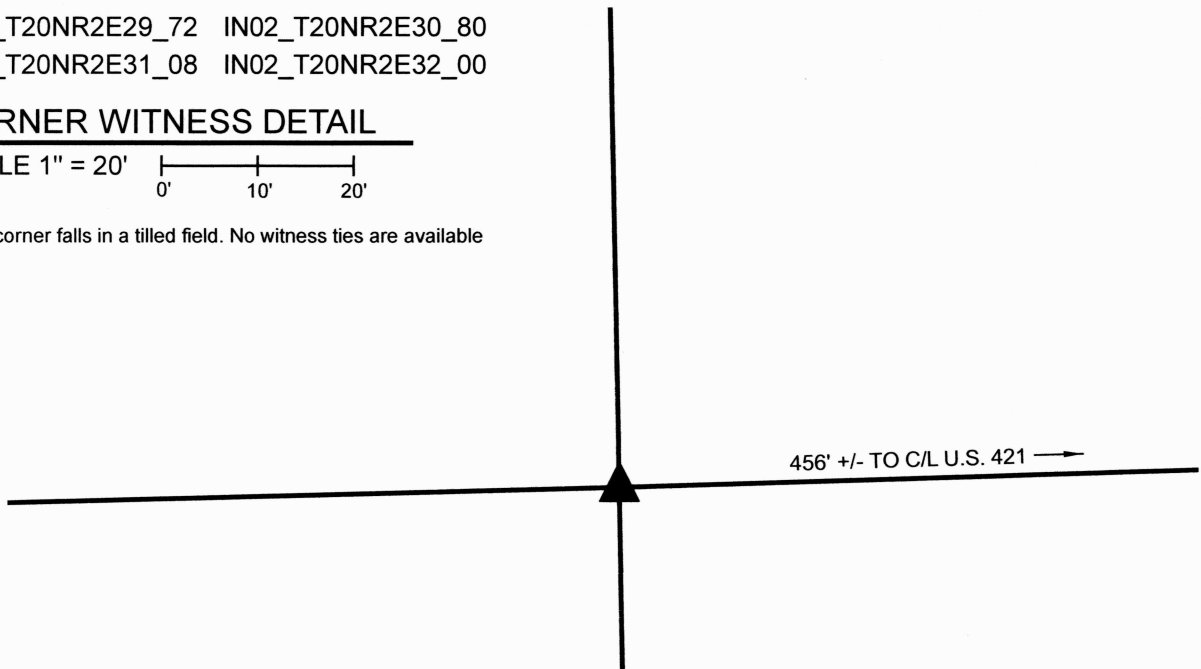
IN02_T20NR2E31_08 IN02_T20NR2E32_00

CORNER WITNESS DETAIL

SCALE 1" = 20'



This corner falls in a tilled field. No witness ties are available

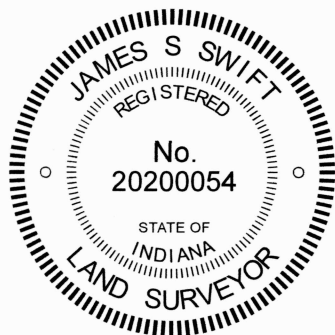


The rebar with Boone County Surveyor cap was set at a calculated position.

This corner was originally set as a wood post in 1822. Beyond that, no specific descriptions of the corner were found in the BCS Surveyor's Record, nor were any recent BCS tie cards or surveys recorded in the Office of the Boone County Recorder found which reference the corner. The corner is mentioned in Deed Record 253, page 20, as being 29 poles west of the center of U.S. 421. The corner is not shown on the 1930 plans for U.S. 421.

This corner falls in a tilled field. As recently as 2014, a distinct east-west field division existed in this immediate vicinity, but no field division was observed recently. Accessory evidence of the corner was observed to both the west and east, and the position of the corner was established with respect to that evidence. The corner was established in the north-south dimension on the westerly prolongation of a line extended west from the north quarter corner of Section 32 (see BCS Corner NE 700-750) through a point 1 rod (16.5 feet) north of an ancient wood corner post on the east side of U.S. 421. (see Instrument 200800001817 for references to the deed line being 1 rod south of the section line). The corner was computed in the east-west dimension as being at double the distance as was observed between said north quarter corner of Section 32 and a wood post providing evidence of the northeast corner of the west half of the northwest quarter of that section. Based on various other evidence, this position provides a best-fit solution, with uncertainties of approximately to 3 feet east and west. Manual excavation and probing in the vicinity of the computed position revealed various small scraps of wire in an east-west line, indicating the presence of a former east-west fence, and several small rocks in immediate proximity to each other, which may indicate the presence of a former corner post. Evidence of the actual post was not observed. The evidence found, wire and small rocks, worked well with the computed position. The deed reference to 29 poles west of the center of the road does not work with any accessory evidence and was not used to determine the position of the corner.

A 30-inch length of 5/8-inch diameter rebar was set at the computed position, fourteen inches deep, on February 2, 2024.



Carol Cunningham
Carol Cunningham, County Surveyor

James S. Swift
James S. Swift, IN LS 20200054

February 14, 2024

Marion Township

Section 30 T20N, R2E	Section 29 T20N, R2E
Section 31 T20N, R2E	Section 32 T20N, R2E