

# SECTION CORNER RECORD

NE 600-000

## BOONE COUNTY SURVEYOR'S OFFICE

State Plane grid coordinates NAD83 (2011):

North: 1777284.21 East: 3124807.27 (U.S. survey feet)

Type of monument: INDOT Type B, plug in monument box

Depth: Flush with adjacent road surface

Indiana tie card references:

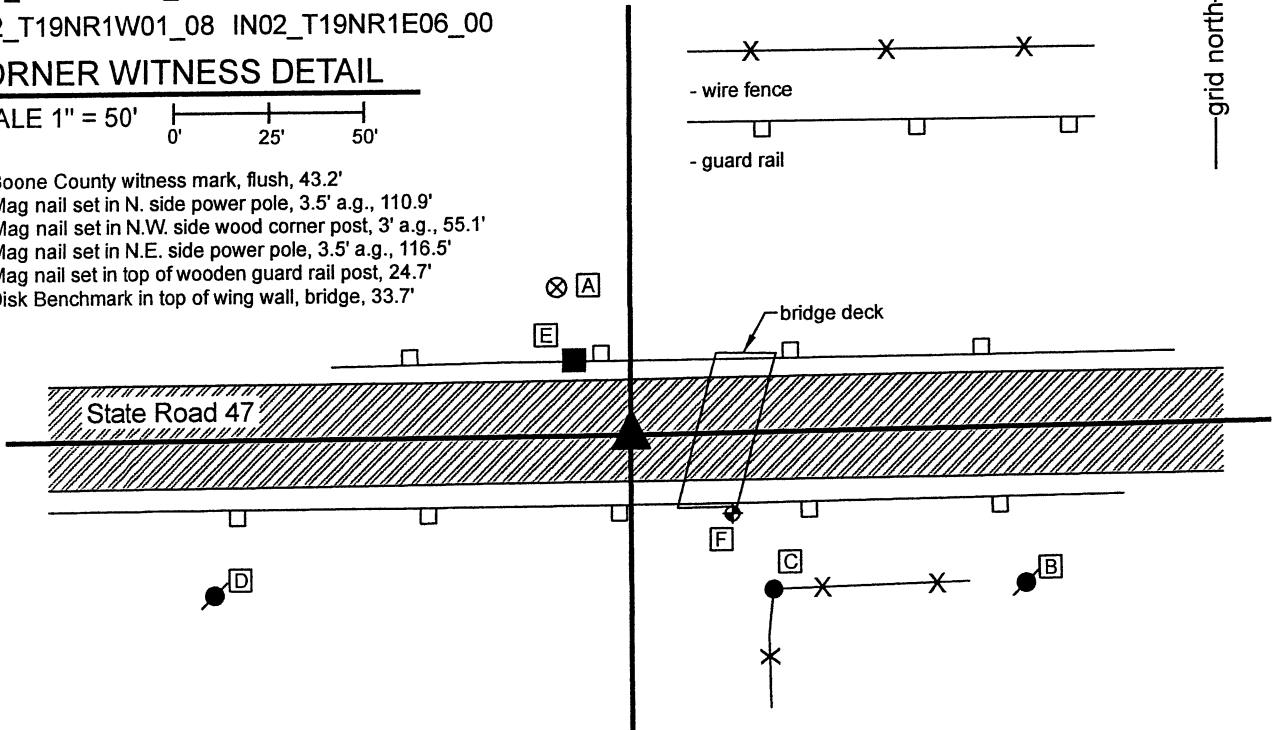
IN02\_T20NR1E31\_72 IN02\_T20NR1W36\_80

IN02\_T19NR1W01\_08 IN02\_T19NR1E06\_00

### CORNER WITNESS DETAIL

SCALE 1" = 50'

- A - Boone County witness mark, flush, 43.2'
- B - Mag nail set in N. side power pole, 3.5' a.g., 110.9'
- C - Mag nail set in N.W. side wood corner post, 3' a.g., 55.1'
- B - Mag nail set in N.E. side power pole, 3.5' a.g., 116.5'
- E - Mag nail set in top of wooden guard rail post, 24.7'
- F - Disk Benchmark in top of wing wall, bridge, 33.7'



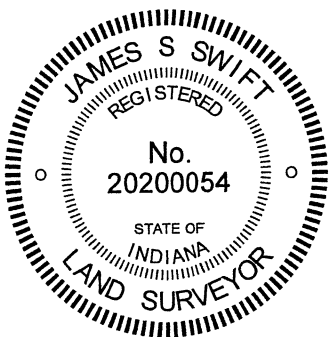
The INDOT Type B monument was found in place.

A BCS record of November 10, 1887 shown in the records of Section 36, Township 20 North, Range 1 West states, with respect to this corner, "Drove stake in road at corner, 36 1/2 links north of corner."

A BCS tie card dated 2004 shows the corner as a P.K. Nail with washers. A subsequent BCS tie card, dated June 22, 2005, shows the corner as a Type "C" Monument in the same position as the nail shown on the previous tie card.

The monument found, being an INDOT Type 'B' monument, appears to be the same monument, in the same position, as those shown on the 2005 tie cards. This corner falls amidst an area of fill immediately west of a bridge under State Road 47. The only local evidence of the corner is the east-west state road. The position of the corner fits well with the relative positions of proximate corners to the east and west.

No excavation was performed at this corner, as it falls in a state highway and is an area of fill. The existing monument is held as the best available evidence of the respective corner. This township corner was originally established as a wood post in 1819.



*Kenneth E. Hedge*  
 Kenneth E. Hedge, County Surveyor

*James S. Swift*  
 James S. Swift, IN LS 20200054  
 January 26, 2021

Washington Township	Clinton Township
Section 36 T20N, R1W	Section 31 T20N, R1E
Section 1 T19N, R1W	Section 6 T19N, R1E

# SECTION CORNER RECORD

# NE 600-050

## BOONE COUNTY SURVEYOR'S OFFICE

State Plane grid coordinates NAD83 (2011):

Corner 1: North: 1777305.18 East: 3126982.29 (U.S. survey feet)

Corner 2: North: 1777307.28 East: 3127149.92 (U.S. survey feet)

Type of monument: plug in monument box, INDOT Type B

Depth: Flush with adjacent road surface

Indiana tie card references:

IN02\_T20NR1E31\_76 IN02\_T19NR1E06\_04

### CORNER WITNESS DETAIL

SCALE 1" = 60'

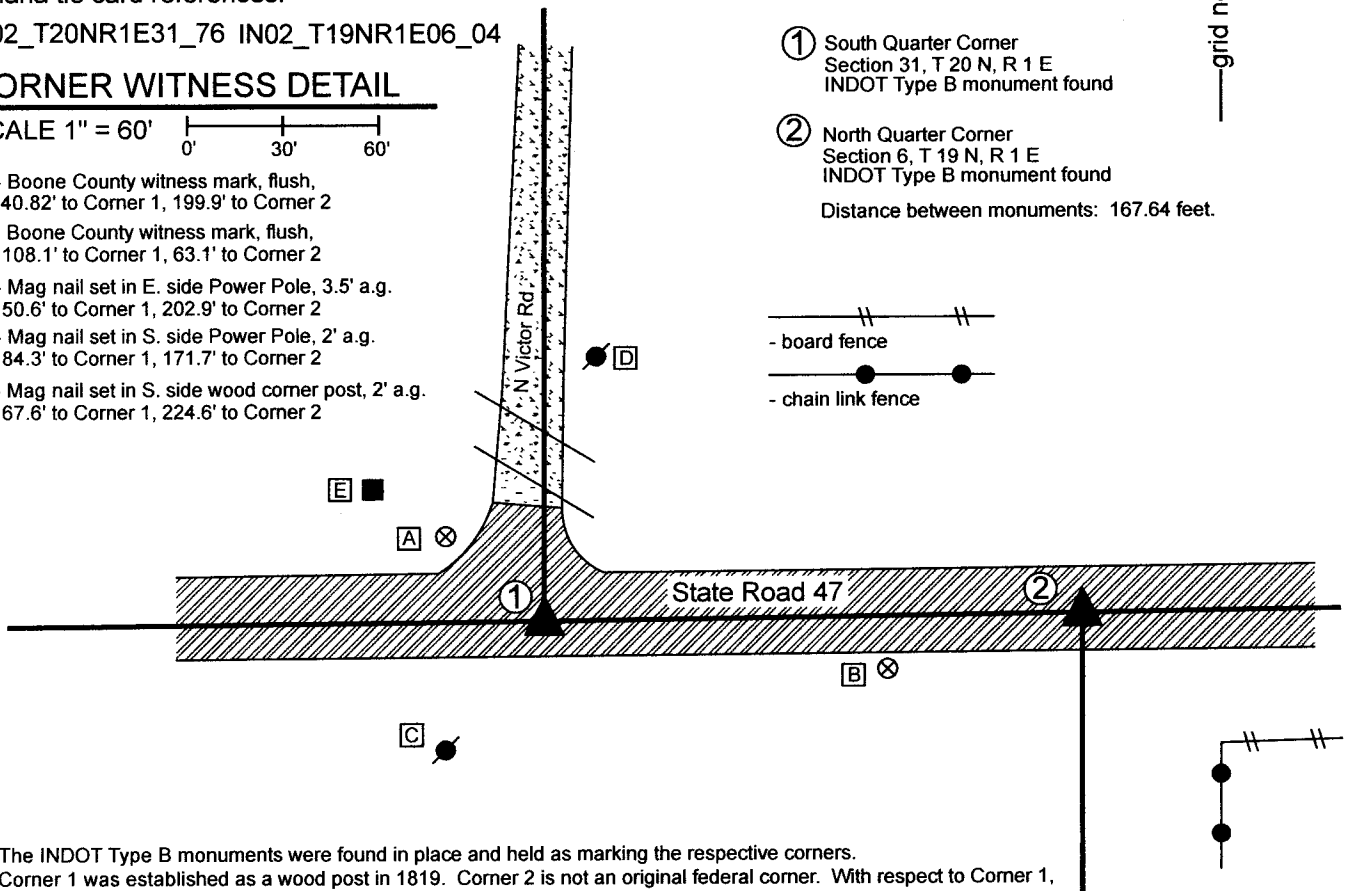
A - Boone County witness mark, flush, 40.82' to Corner 1, 199.9' to Corner 2

B - Boone County witness mark, flush, 108.1' to Corner 1, 63.1' to Corner 2

C - Mag nail set in E. side Power Pole, 3.5' a.g. 50.6' to Corner 1, 202.9' to Corner 2

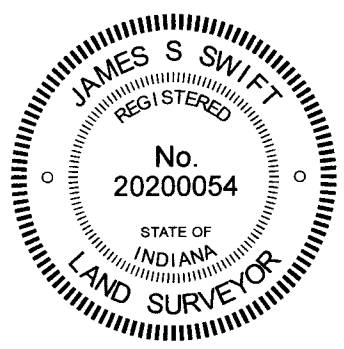
D - Mag nail set in S. side Power Pole, 2' a.g. 84.3' to Corner 1, 171.7' to Corner 2

E - Mag nail set in S. side wood corner post, 2' a.g. 67.6' to Corner 1, 224.6' to Corner 2



The INDOT Type B monuments were found in place and held as marking the respective corners. Corner 1 was established as a wood post in 1819. Corner 2 is not an original federal corner. With respect to Corner 1, a BCS record of October 26, 1912 states, "A stake from which two rocks bear south 45 1/2 links. Top rock 15,12,10 +. One under 12,8,7 not marked." Corner 2 is called as being reestablished by a record dated December 26, 1856, with no call for a monument. A BCS tie card dated June 22, 2005 shows both corners as being INDOT Type C monuments. The monuments found appear to be the same monuments in the same positions as called on the 2005 tie cards, though they actually appear to be INDOT Type B monuments, being brass plugs in monument boxes. These monuments are also shown as representing the corners on a Route Control Survey recorded as Instrument 2018006112 in the Office of the Boone County Recorder.

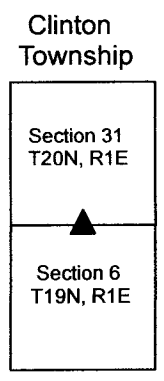
It is noted that these corners would theoretically be separated by 265 links, or 174.9 feet, which is the same offset as at the northeast corner of Section 6. However, the physical monuments are separated by 167.64 feet, approximately 7 feet less than the theoretical separation. No explanation is offered for this. The previous tie cards and route survey are held as the best evidence of the position of the corners. No excavation was performed, as these corners fall in a state road.



*Kenneth E. Hedge*  
 Kenneth E. Hedge, County Surveyor

*James S. Swift*

James S. Swift, IN LS 20200054  
 September 21, 2022



# SECTION CORNER RECORD

# NE 600-100

## BOONE COUNTY SURVEYOR'S OFFICE

State Plane grid coordinates NAD83 (2011):

Corner 1: North: 1777337.73 East: 3129618.11 (U.S. survey feet)

Corner 2: North: 1777340.10 East: 3129793.16 (U.S. survey feet)

Type of monument: Plug in monument box, INDOT Type B

Depth: One inch below adjacent road surface

Indiana tie card references:

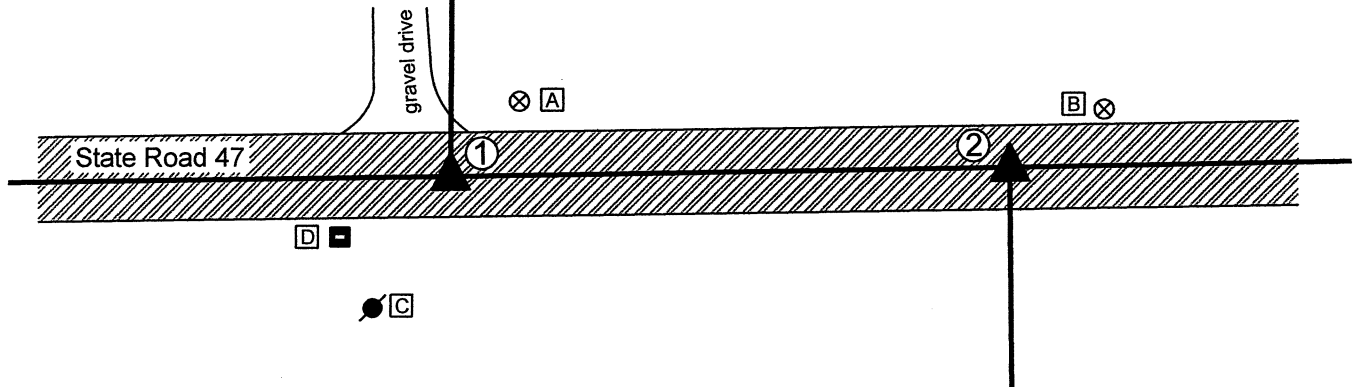
IN02\_T20NR1E32\_72 IN02\_T20NR1E31\_80

IN02\_T19NR1E06\_08 IN02\_T19NR1E05\_00

### CORNER WITNESS DETAIL

SCALE 1" = 60'

- A - Boone County witness mark, flush, 31.7' to Corner 1, 155.1' to Corner 2
- B - Boone County witness mark, flush, 205.4' to Corner 1, 34.5' to Corner 2
- C - Mag nail set in N. side power pole, 2' a.g., 47.6' to Corner 1, 204.1' to Corner 2
- D - Base of Mailbox 900 East, flush, 39.6' to Corner 1, 210.8' to Corner 2



- ① S.E. Corner, Section 31  
S.W. Corner, Section 32  
T 20 N, R 1 E  
INDOT Type B monument found
  - ② N.W. Corner, Section 5  
N.E. Corner, Section 6  
T 19 N, R 1 E  
INDOT Type B monument found
- Distance between monuments: 175.0'

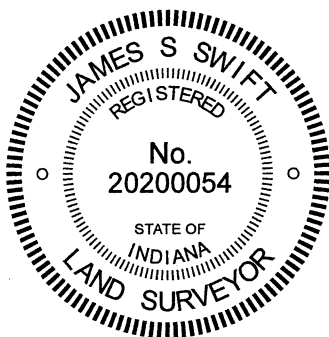
The INDOT Type B monuments were found in place and held as marking the respective corners.

A BCS record of June 2-3, 1862 states, with respect to Corner 1, "Found by measuring the lap from corners Sections 5&6 where found a stone and one tree. Set two Rocks at G. One 8.7 by 5. Top one 24.16 by 8 in." No specific descriptions of Corner 2 were found in the BCS Surveyor's Record beyond the original establishment of the corner as a wood post in 1822, 265 links east of Corner 1, though the corner is referenced in the 1862 record for Corner 1.

A BCS tie card dated June 22, 2005 shows both corners at Type "C" monuments.

The found monuments, being INDOT Type B monuments, fit with the 2005 tie card and also fit with evidence of occupation in the form of the edge of a field and lawn to the north and a field division to the south, respectively. The distance between the monuments fits within 0.2 foot of the original federal closing distance of 265 links. No excavation was performed at these corners as they fall in a state road. The found Type B monuments were held as marking the respective corners.

Corner 1 was originally established as a wood post in 1819. Corner 2 was originally established as a wood post in 1822.



*Kenneth E. Hedge*  
 Kenneth E. Hedge, County Surveyor

*James S. Swift*  
 James S. Swift, IN LS 20200054  
 December 20, 2021

Clinton Township

Section 31 T20N, R1E	Section 32 T20N, R1E
Section 6 T19N, R1E	Section 5 T19N, R1E

# SECTION CORNER RECORD

# NE 650-000

## BOONE COUNTY SURVEYOR'S OFFICE

State Plane grid coordinates NAD83 (2011):

Corner 1: North: 1779931.40 East: 3124796.60 (U.S. survey feet)

Corner 2: North: 1779948.55 East: 3124796.55 (U.S. survey feet)

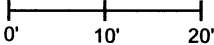
Corner 1: Stone with divot chisled in top high point, 14" below grade

Corner 2: 24" length of 5/8" diameter rebar with aluminum cap stamped 'Boone County Surveyor', 14" below grade

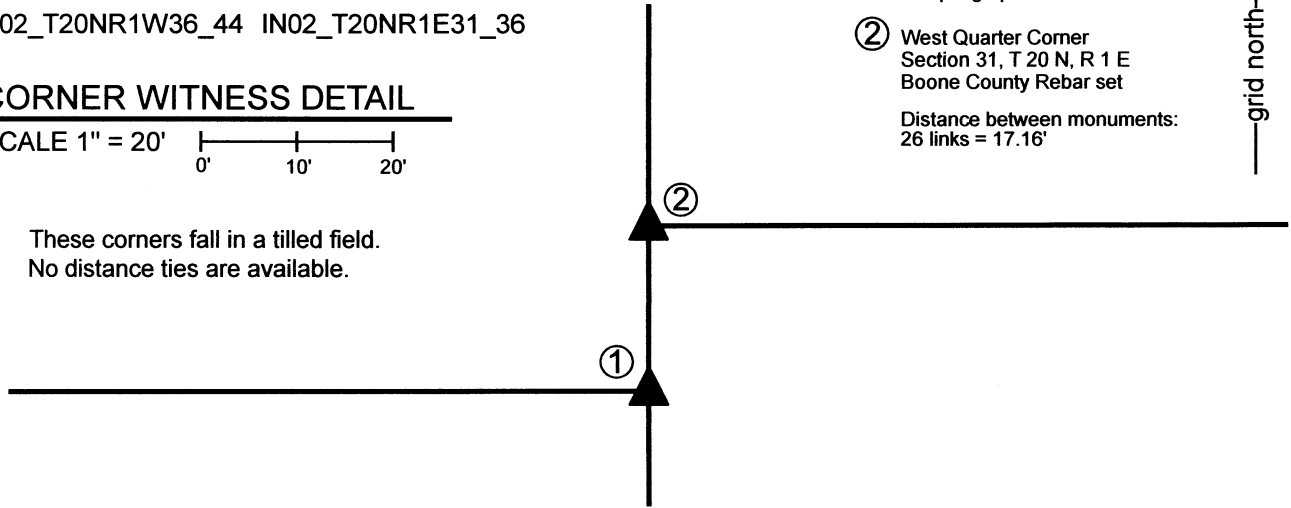
Indiana tie card references:

IN02\_T20NR1W36\_44 IN02\_T20NR1E31\_36

### CORNER WITNESS DETAIL

SCALE 1" = 20' 

These corners fall in a tilled field.  
No distance ties are available.



① East Quarter Corner  
Section 36, T 20 N, R 1 W  
Stone with divot chisled  
in top high point

② West Quarter Corner  
Section 31, T 20 N, R 1 E  
Boone County Rebar set

Distance between monuments:  
26 links = 17.16'

The stone at Corner 1 was found in place and held as marking the corner. The rebar at Corner 2 was set 26 links north of the stone at Corner 2, in-line with fragmentary evidence of fences to the north, south and east.

A BCS Record pertaining to Corner 1, dated November 10, 1887, states, "Reestablished from stump of Hickory and Roots of Sugar. Set a Rock 18x12x12 + from which a Walnut 14 in. bears N 61° E 25 lks. Set Rock 16x10x6 +, 26 links North of this for H Section 31." Note: H of Section 31 represents Corner 2.

A BCS Record pertaining to Corner 2, dated October 26, 1912, states "Est. 26 links N. of D, sec. 36. Set a rock 16x10x5 in. marked +." It is noted that the rock referenced as being set at Corner 2 in 1912 is almost identical to the dimensions referenced for the rock referenced as being set at that corner in 1887.

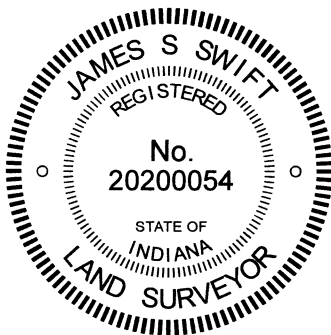
No surveys recorded in the Office of the Boone County Recorder were found referencing these corners.

Both corners were excavated on April 10, 2023. The corners fall in a tilled field and no surface evidence was observed prior to excavation. The midpoint of the line connecting the southeast and northeast corners of Section 36 was computed as a central point for reconnaissance.

Substantial evidence of an old, occupied corner was found in the immediate vicinity of this computed position. Several rocks and various bits of wire were found. The most notable evidence was a rock found at 14 inches deep. This rock had a distinct E-W ridge across the top and a distinct high point near the west edge of the rock. N-S wire was found across the top of the rock. With the top 7 inches of the rock exposed, it measured 16 inches E-W by 12 inches N-S by 9 inches tall, approximating but not quite matching, the dimensions recited in the 1887 record. Excavation at a position 26 links north of this corner did not reveal any rocks, but did reveal fragments of north-south fence and fence to the east, all underground. Notably, the fragments of fence appeared to intersect at precisely the position computed 26 links north of the stone found to the south.

The found stone was held as marking Corner 1. A small divot mark was etched in the high point of this rock. Corner 2 was established on the line connecting Corner 1 and the northeast corner of Section 36 (see BCS Corner NW 700-000) at 26 links (17.16 feet). As noted above, this position falls at the intersection of fragmentary, below ground evidence of fences to the north, south and east. A 24-inch long section of 5/8-inch diameter rebar with metal cap stamped 'Boone County Surveyor' was set at 14 inches deep to mark this corner.

Corner 1 was originally established as a wood post on the meridian line in 1819. Corner 2 is not an original federal corner.



*Carol Cunningham*  
\_\_\_\_\_  
Carol Cunningham, County Surveyor

*James S. Swift*  
\_\_\_\_\_  
James S. Swift, IN LS 20200054  
April 26, 2023

Washington Township    Clinton Township

Section 36 T20N, R1W	Section 31 T20N, R1E
-------------------------	-------------------------

# SECTION CORNER RECORD

## BOONE COUNTY SURVEYOR'S OFFICE

NE 650-100

State Plane grid coordinates NAD83 (2011):  
 North: 1779975.21 East: 3129622.37 (U.S. survey feet)

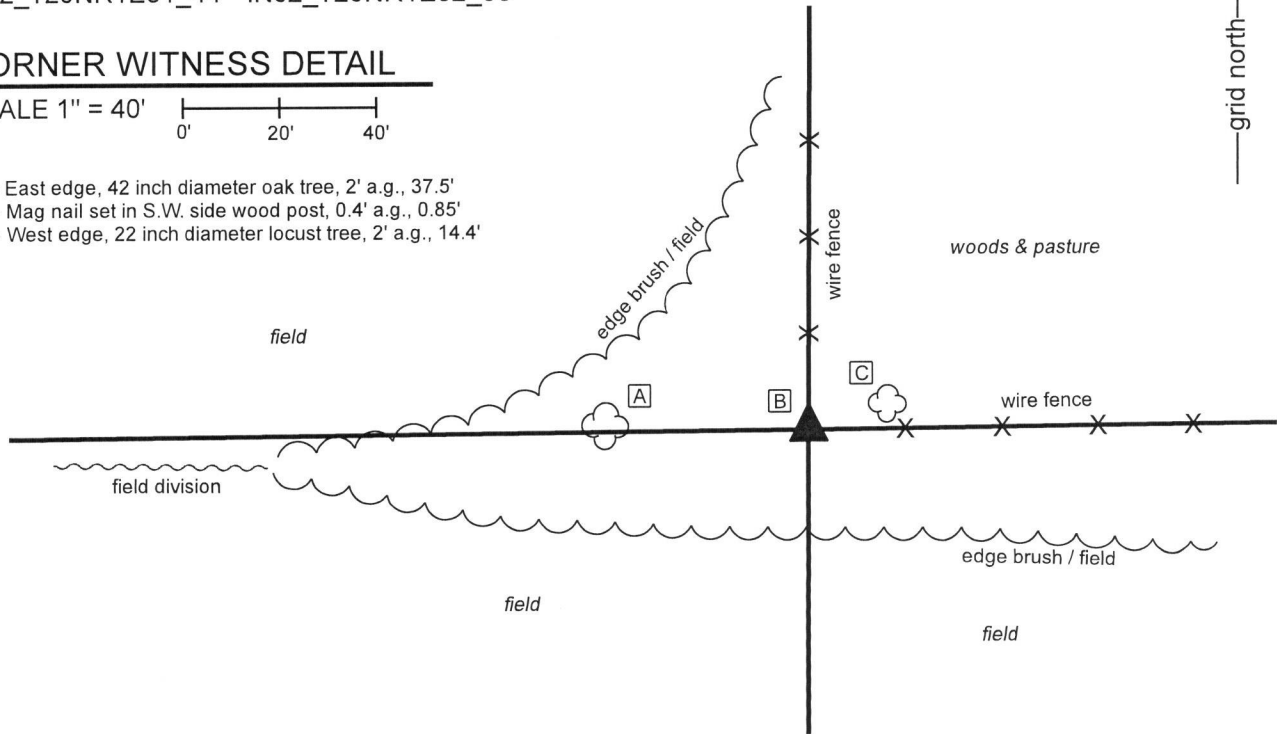
Type of monument: + mark on granite stone  
 Depth: 2 inches below adjacent ground

Indiana tie card references:  
 IN02\_T20NR1E31\_44 IN02\_T20NR1E32\_36

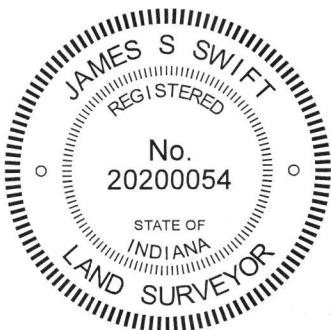
### CORNER WITNESS DETAIL

SCALE 1" = 40'

- A - East edge, 42 inch diameter oak tree, 2' a.g., 37.5'
- B - Mag nail set in S.W. side wood post, 0.4' a.g., 0.85'
- C - West edge, 22 inch diameter locust tree, 2' a.g., 14.4'

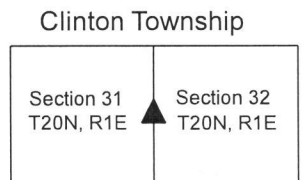


The stone was found in place. This stone is described in a BCS record of June 2-3, 1862, which states "Reestablished from sugar and roots of ash. Set two rocks, one 3. 2 1/2 by 2 inches. Top rock 22.15.8 in. marked X."  
 The stone was found on March 18, 2019 at the south edge of a post which represents the terminus of a standing fence to the north and at the east edge of a post (leaning substantially and loose in the ground) which is in-line with standing fence to the east. As found, the stone was approximately 4 inches below grade. After removal of various brush, dirt and detritus, the stone was left exposed, approximately 2 inches below the surrounding dirt. The stone has a distinct X mark on the top. The top of the stone is approximately 12 inches N-S by 8 inches E-W. The north, east and west sides of the stone appear to be vertical. The south side of the stone slopes to a point approximately 9 inches below the top, below which the south side also appears to be vertical. At 9 inches below the top, the stone measures 15 inches N-S by 8 inches E-W, matching two of the dimensions in the 1862 record. The top 11 inches of the stone were exposed. Probing along the east edge of the stone indicates that it is approximately 22 inches tall. The lower stone was not detected with a probe, as it is substantially smaller than the larger stone.  
 The stone matches the dimensions recited in the 1862 record and was accepted as marking the corner and left in place with the top exposed. No recent BCS tie cards or recorded surveys were found referencing this corner. No rebars or other modern survey monuments were found in the vicinity of the corner.  
 This corner was originally established as a wood post in 1822.



*Kenneth E. Hedge*  
 Kenneth E. Hedge, County Surveyor

*James S. Swift*  
 James S. Swift, IN LS 20200054  
 April 3, 2019



# SECTION CORNER RECORD

NE 700-000

## BOONE COUNTY SURVEYOR'S OFFICE

State Plane grid coordinates NAD83 (2011) (U.S. survey feet):

Corner 1: North: 1782576.48 East: 3124788.34

Corner 2: North: 1782610.80 East: 3124788.12

Type of monuments: Harrison, 4" disk 'Section Corner'

Depth: Flush with surrounding ground

Indiana tie card references:

IN02\_T20NR1W36\_08 IN02\_T20NR1E31\_00

IN02\_T20NR1W25\_80 IN02\_T20NR1E30\_72

The Harrison monument at Corner 1 was set in place of a stone found. The Harrison monument at Corner 2 was set at a calculated position, 52 links north of Corner 1.

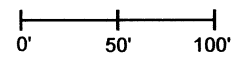
No specific descriptions of either of these corners were found in the BCS Surveyor's Record beyond the original establishment of Corner 1 as a wood post in 1819 and Corner 2 as a wood post set 52 links north of Corner 1 in 1822. Corner 1 is listed as the terminal point for measurements in an entry dated 1879. Corner 2 is listed as the terminal point for measurements in an entry from 1834.

No BCS tie cards were found referencing these corners. Corner 1 is shown as a "Head Post" on a survey recorded as Miscellaneous Record 125, pages 23-25, December 13, 1991, in the Office of the Boone County Recorder. The deeds for the adjacent land to the northwest (Warren, Instrument 201000010173) and the land to the north of that (Metzger, Deed Record 254, page 688) both call for a distance of 921.70 feet from the southeast corner of Section 25 (Corner 1) to the common corner of those properties.

Reconnaissance and computations were performed at and with respect to these corners over the course of several years. During recon, a t-post was visible in the vicinity of Corner 2 and wire fencing was readily detectable underground, but no wood posts or standing fence was visible in the immediate vicinity of these corners. After careful analysis, it was concluded that the most reliable accessory evidence of these corners is a wood corner post with iron pipe at the south edge thereof, marking the apparent corner between Warren and Metzger, as discussed above. Excavation at a point 921.7 feet south of this evidence revealed substantial evidence of north-south wire fencing found buried in the ground in a north-south grass strip, several rocks and some evidence of fencing to the west, indicating the presence of an old, occupied corner. The base of the actual head post was not found and appears to have been extracted rather than broken-off. A stone found at 921.7 feet south of the corner post to the north provided the most reliable physical evidence of Corner 1. This stone measured 13 inches N-S by 9 inches E-W by 7 inches tall, with no specific marks detected. The top, center point of the stone was held as the position of the corner. The stone was removed and a Harrison monument was set in place of it. No rocks were found in the immediate vicinity of Corner 2, though substantial evidence of north-south wire fencing was found in the ground. The position of this corner was computed on the meridian line as defined by Corner 1 and the east quarter corner of Section 25 (See BCS Corner NW 750-000) at the federal closing distance of 52 links. This position fell approximately 1 foot east and 1.75 feet south of the t-post previously noted. It is noted that by holding the positions as monumented and computing the position of the east quarter corner of Section 36 and the west quarter corner of Section 31 at midpoints of the lines connecting the section corners with the township corner to the south, substantial evidence of those corners was found (see BCS Corners NE and NW 650-000), providing collateral evidence to support the positions of the corners as documented by this record sheet.

### CORNER WITNESS DETAIL

SCALE 1" = 100'

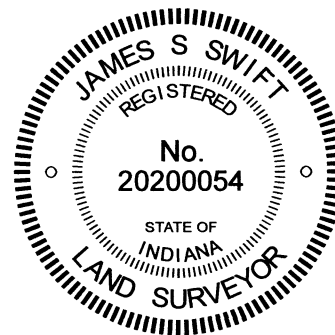
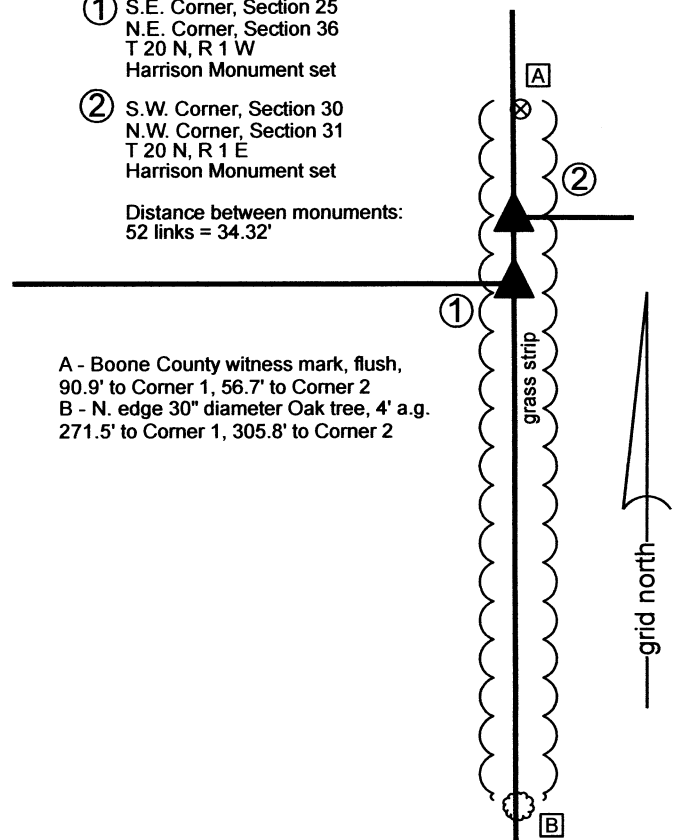


① S.E. Corner, Section 25  
N.E. Corner, Section 36  
T 20 N, R 1 W  
Harrison Monument set

② S.W. Corner, Section 30  
N.W. Corner, Section 31  
T 20 N, R 1 E  
Harrison Monument set

Distance between monuments:  
52 links = 34.32'

A - Boone County witness mark, flush,  
90.9' to Corner 1, 56.7' to Corner 2  
B - N. edge 30" diameter Oak tree, 4' a.g.  
271.5' to Corner 1, 305.8' to Corner 2



Washington Township Clinton Township

Section 25 T20N, R1W	Section 30 T20N, R1E
Section 36 T20N, R1W	Section 31 T20N, R1E

*Carol Cunningham*

Carol Cunningham, County Surveyor

*James S. Swift*

James S. Swift, IN LS 20200054 4/26/2023

# SECTION CORNER RECORD

NE 700-050

## BOONE COUNTY SURVEYOR'S OFFICE

State Plane grid coordinates NAD83 (2011):

North: 1782594.62 East: 3127006.89 (U.S. survey feet)

Type of monument: Harrison, 4" disk 'Section Corner'

Depth: Flush with slope on south side, 5" a.g. on north side

Indiana tie card references:

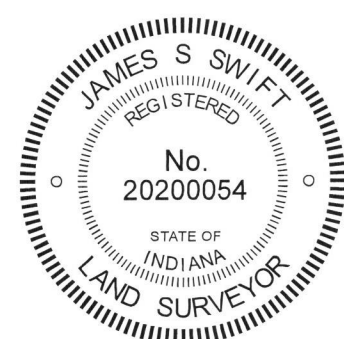
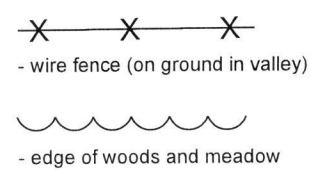
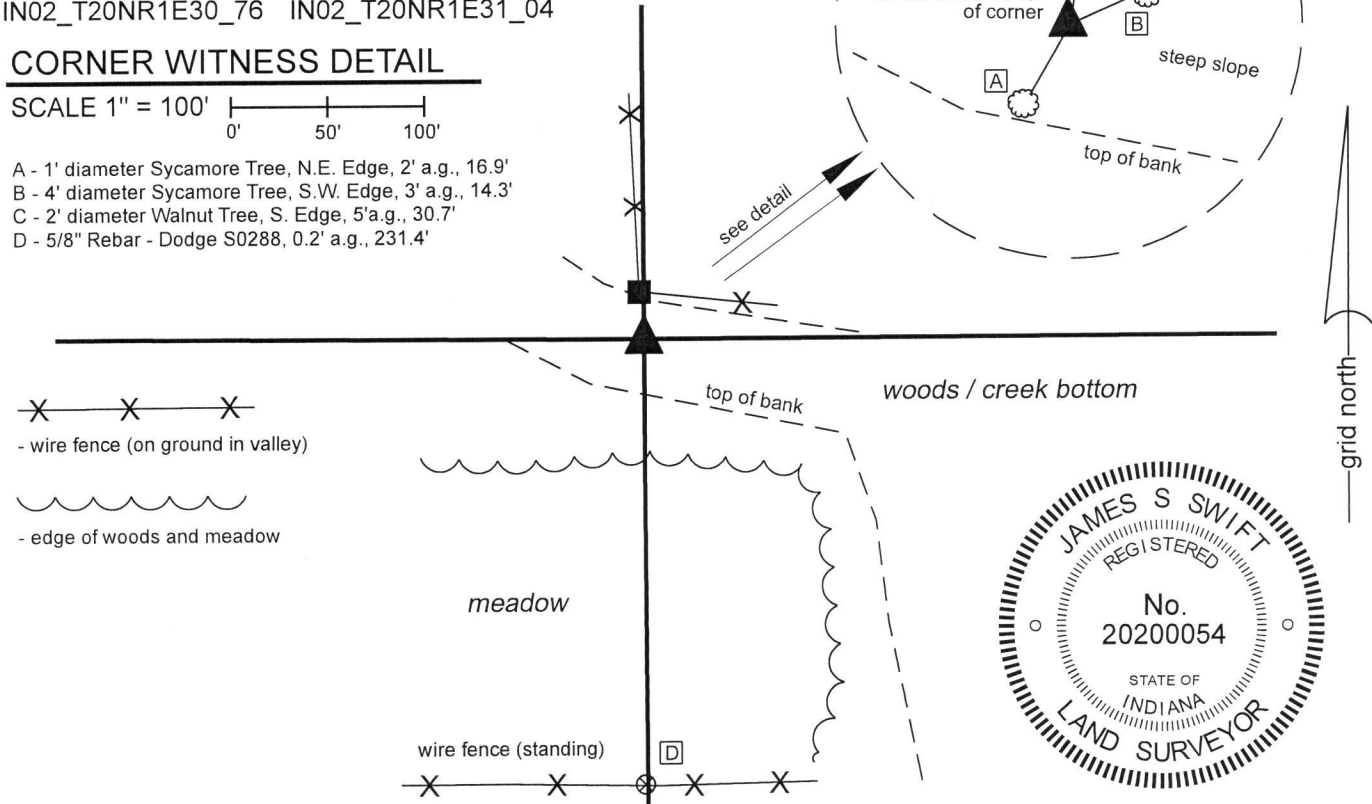
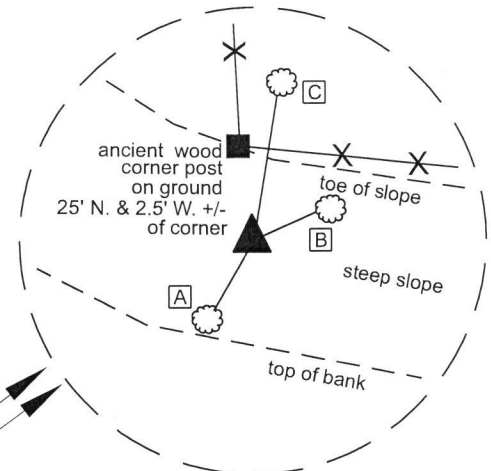
IN02\_T20NR1E30\_76 IN02\_T20NR1E31\_04

### CORNER WITNESS DETAIL

SCALE 1" = 100'

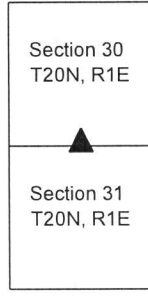
- A - 1' diameter Sycamore Tree, N.E. Edge, 2' a.g., 16.9'
- B - 4' diameter Sycamore Tree, S.W. Edge, 3' a.g., 14.3'
- C - 2' diameter Walnut Tree, S. Edge, 5'a.g., 30.7'
- D - 5/8" Rebar - Dodge S0288, 0.2' a.g., 231.4'

DETAIL  
SCALE 1" = 50'



The Harrison monument was set in place of a rebar found. No specific descriptions of this corner were found in the BCS Surveyor's Record beyond the original establishment of the corner as a wood post in 1822. The corner is shown as being established but not monumented on a survey by Jerry L. Carter, LS #S0350, Anderson and Associates Land Surveyors Job #040303, dated April 1, 2004. The same apparent position is shown as being monumented by a capped rebar on a survey by Jonathon E. Hause, LS 20600040 on a survey dated October 11, 2011 and recorded in Survey Book 13, page 53 in the Office of the Boone County Recorder. Both surveys demonstrate that this position was established at a double distance prolongation of a line from a nail held as marking the center of section 30 through a headpost found 1/4 mile south thereof. Both surveys show the position to be south and east of a wood corner post found. This corner was investigated March, 2019. A rebar bearing a blue cap stamped 'Hause PLS20600040' was found at the position shown on the aforementioned Hause survey. The wood corner post was found nearby, on the ground, north and west of the corner position, as demonstrated on the surveys. It is noted that the corner position shown on the Carter and Hause surveys falls on a steep slope and that the post and fence bearing east from it are along the bottom of slope of the steep bank, indicating that they were installed in that location for practical reasons of fencing along the bottom of the hill. Hence, the post is not considered reliable evidence of the corner. It is also noted that the section of north south fence (on the ground), though not along the half-mile section line, bears toward the corner position, as monumented by the rebar. The position of the rebar works well with the relative positions of proximate corners and with the closing distance to the range line, 1/2 mile west. It also works reasonably well calls in deeds to the south and east. The descriptions of the land to the west and adjoining strip of land to the south were described from the monumented position per the Carter survey. The description of the Hamstra property to the west (19604352) appears to be referenced to the corner post. As noted, the post is not considered reliable evidence of the corner and the position established by Carter and held by Hause was accepted as the corner. The rebar was removed and replaced with a Harrison monument in the same position on March 25, 2019.

Clinton Township



*Kenneth E. Hedge*  
Kenneth E. Hedge, County Surveyor

*James S. Swift*  
James S. Swift, IN LS 20200054  
May 22, 2019