

SECTION CORNER RECORD

NW 000-1100

BOONE COUNTY SURVEYOR'S OFFICE

State Plane grid coordinates NAD83 (2011):

Corner 1: North: 1745581.50 East: 3066640.19 (U.S. survey feet)

Corner 2: North: 1745581.47 East: 3066646.79 (U.S. survey feet)

Monument: Harrison monument, 4" disk 'Section Corner'

Depth: Six inches below adjacent road surface

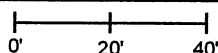
Indiana tie card references:

IN02_T19NR2W32_72 IN02_T19NR2W31_80

IN02_T18NR2W06_08 IN02_T18NR2W05_00

CORNER WITNESS DETAIL

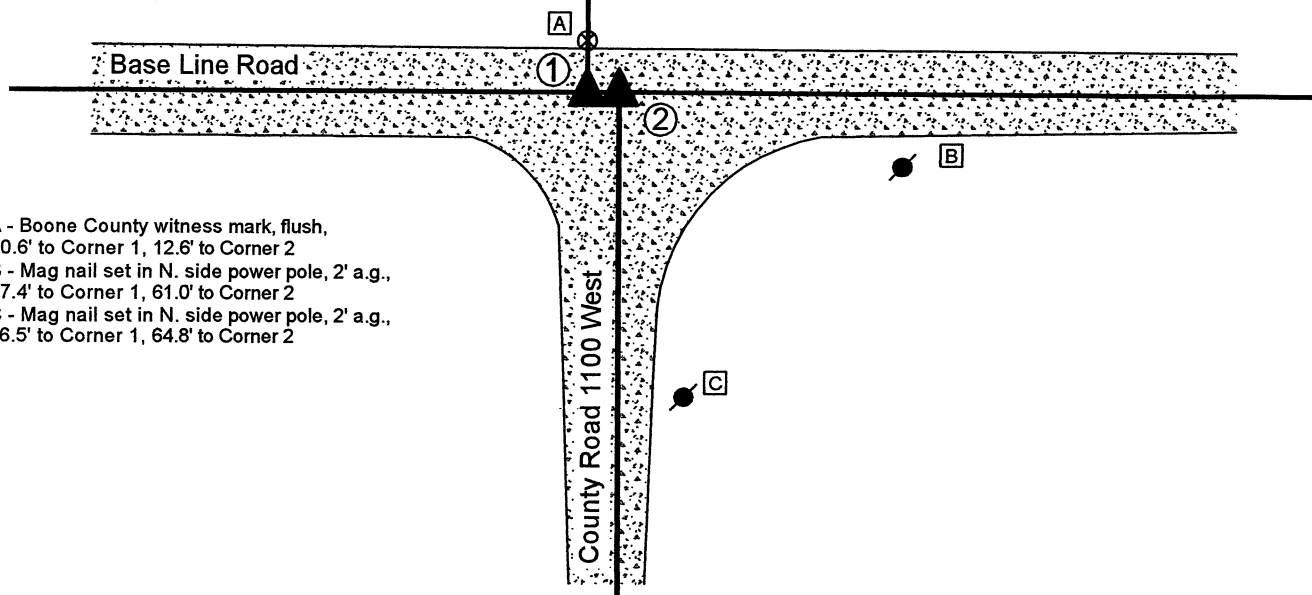
SCALE 1" = 40'



① S.E. Corner, Section 31
S.W. Corner, Section 32
T 19 N, R 2 W
Harrison monument set

② N.E. Corner, Section 6
N.W. Corner, Section 5
T 18 N, R 2 W
Harrison monument set

Distance between corners: 10 links = 6.6'

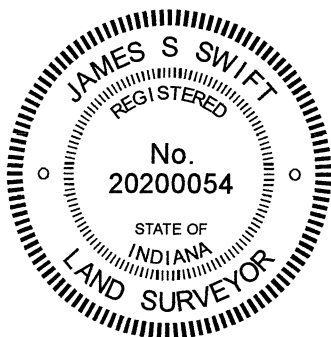


A - Boone County witness mark, flush, 10.6' to Corner 1, 12.6' to Corner 2

B - Mag nail set in N. side power pole, 2' a.g., 67.4' to Corner 1, 61.0' to Corner 2

C - Mag nail set in N. side power pole, 2' a.g., 66.5' to Corner 1, 64.8' to Corner 2

The Harrison monument at Corner 2 was set over a stone found. Corner 1 was established on the township line, 6.6 feet west of Corner 2. A BCS tie card dated September 20, 1912 states, with respect to Corner 2, "Located by measurement from rock at quarter section corner in section 6 and by line from quarter section corner on section line between 5 and 6. Set stone 10x10x14 flat, sandy rock, 10x12x6 under." No specific descriptions of Corner 1 were found in the BCS Surveyor's Record beyond the original establishment of the corner as a wood post in 1819. It is noted that the federal closing distance at this corner is 10 links (6.6 feet) east. A BCS tie card dated October, 1971 states, with respect to Corner 2, "Stone located. RRR 6" from stone, S. side." These corners were both excavated on December 27, 2019. Prior to excavation, a vertical section of railroad rail was found at the intersection of Base Line Road and County Road 1100 West, per the 1971 tie card. Excavation at Corner 2 revealed the lower stone described in the 1912 record at 27 inches deep. The stone measured 12 inches N-S by 10 inches E-W on the top and was buried 10 inches into the clay layer below the road bed. The top, center of the stone was 6 inches north of the position of the railroad rail, removed during excavation. No specific marks were observed etched on the stone. The stone was accepted as being the lower monument called in the 1912 record. Excavation of an area 3 feet east-west by 4 feet north-south, centered on a position 6.6 feet west of the found stone revealed no evidence of Corner 1. The stone found at Corner 2 was left in place and a Harrison monument was set over the top, center of the stone, 6 inches south of the position of the rail, in agreement with the 1971 tie card, on December 27, 2019. Corner 1 was established on the westerly prolongation of the township line as defined by Corner 2 and the south quarter corner of Section 32, T19N, R2W, (see BCS Corner NW 000-1050). A Harrison monument was set at this position on December 4, 2020.



Kenneth E. Hedge
Kenneth E. Hedge, County Surveyor

James S. Swift
James S. Swift, IN LS 20200054
December 15, 2020

Jefferson Township

Section 31 T19N, R2W	Section 32 T19N, R2W
Section 6 T18N, R2W	Section 5 T18N, R2W

SECTION CORNER RECORD

NW 000-1150

BOONE COUNTY SURVEYOR'S OFFICE

State Plane grid coordinates NAD83 (2011):

Corner 1: North: 1745585.57 East: 3063982.69 (U.S. survey feet)

Corner 2: North: 1745585.56 East: 3063989.29 (U.S. survey feet)

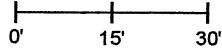
Monument: Harrison monument, 4" disk 'Section Corner'
Depth: Six inches below adjacent road surface

Indiana tie card references:

IN02_T19NR2W31_76 IN02_T18NR2W06_04

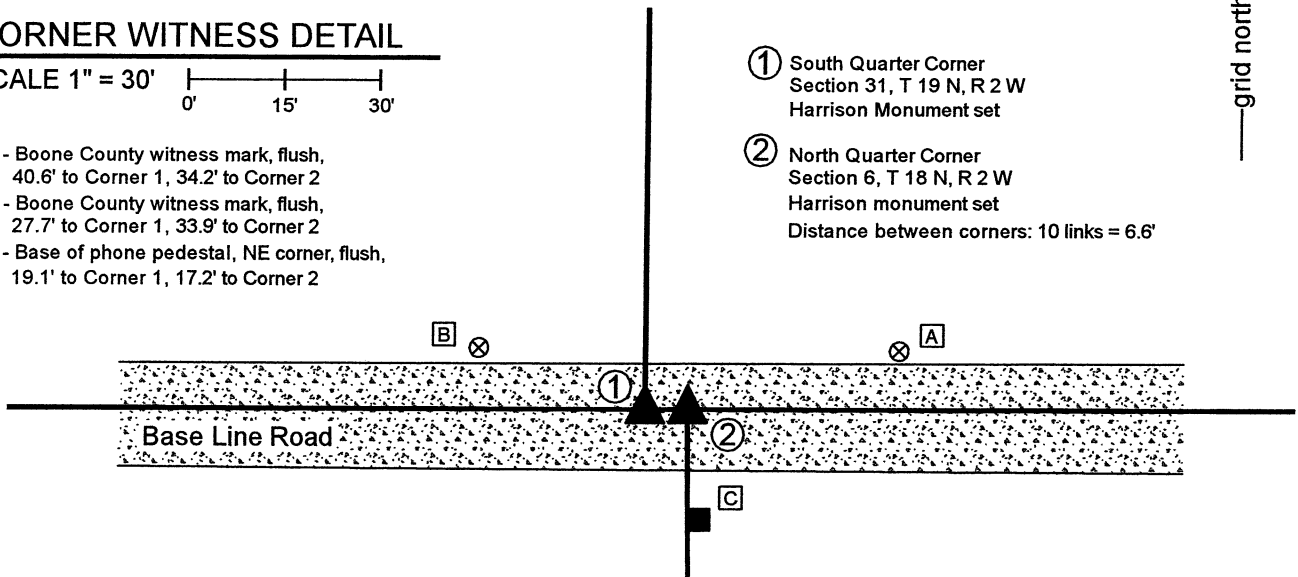
CORNER WITNESS DETAIL

SCALE 1" = 30'

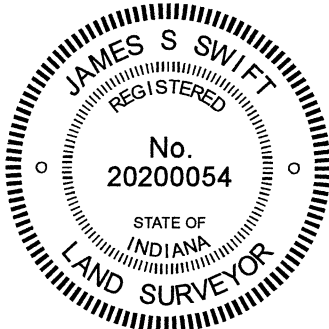


- A - Boone County witness mark, flush, 40.6' to Corner 1, 34.2' to Corner 2
- B - Boone County witness mark, flush, 27.7' to Corner 1, 33.9' to Corner 2
- C - Base of phone pedestal, NE corner, flush, 19.1' to Corner 1, 17.2' to Corner 2

- ① South Quarter Corner
Section 31, T 19 N, R 2 W
Harrison Monument set
- ② North Quarter Corner
Section 6, T 18 N, R 2 W
Harrison monument set
Distance between corners: 10 links = 6.6'



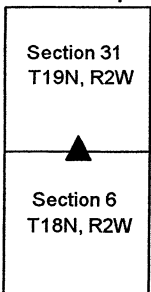
The Harrison monument at Corner 2 was set in place of a 5/8 inch rebar found. Corner 1 was established on the township line 6.6 feet west of Corner 2. A BCS record of March 18-19, 1858 states, with respect to Corner 2, "Set Rock 9x18." No specific descriptions of Corner 1 were found beyond the original establishment of that corner as a wood post in 1819. Distances in entries of 1858 and 1910 show the relative position of Corner 2 with respect to the adjacent corners in section 6 and entries of 1858 also show the relative position of Corner 1 with respect to adjacent corners in section 31. None of the entries give specific information about the offsets between the two corners. The original federal notes for section 6 call for the northeast corner of section 6 as closing on the township line 10 links (6.6 feet) east of the standard corner. The same offset should be applied to the north quarter corner of section 6. A BCS tie card dated October, 1971 shows Corner 2 in line with a post to the south but makes no mention of what monument may have been set or found. These corners were excavated on June 5, 2020. Prior to excavation, two monuments were found: A 1/2 inch diameter rebar was found 18 feet west and 2 feet south of a 5/8 inch rebar. The 1/2 inch rebar was substantially further west that would be expected for either corner, based on analysis of the original federal dimensions and the dimensions in the 1858 and 1910 BCS records. The 5/8 inch rebar, though apparently newer and less deteriorated than the 1/2 inch rebar, fit quite well with expected position computed with respect to the previous records, falling between and approximately equidistant from the two computed positions. Excavation around both monuments and much of the area between them did not reveal further evidence of the corners. It is noted that the bottom of the road bed was found well below the level of the surrounding ground and becoming deeper in the vicinity of a small swale slightly west of the corners. It appears that the road bed has been substantially influenced by the swale and that any stone which was present, has likely been removed in excavating the swale and building up the road bed. The 5/8 inch rebar was in the center of the E-W road, in-line with two steel posts found on the south edge of the road. The posts appeared in the field to be former gate posts. The 5/8 rebar was held as marking the closing corner (Corner 2). The rebar was removed and replaced with a Harrison monument in the same position on June 5, 2020. Corner 1 was established 6.6 feet west of Corner 2 on the township line as defined by Corner 2 and the position of the southeast corner of Section 31, T19N, R2W (see BCS Corner NW 000-1100). A Harrison monument was set at this position on December 4, 2020. Corner 1 was originally set as a wood post in 1819. Corner 2 is not an original federal corner.



Kenneth E. Hedge
Kenneth E. Hedge, County Surveyor

James S. Swift
James S. Swift, IN LS 20200054
December 15, 2020

Jefferson Township



SECTION CORNER RECORD

NW 000-1200

BOONE COUNTY SURVEYOR'S OFFICE

State Plane grid coordinates NAD83 (2011):

Corner: North: 1745586.36 East: 3061236.80 (U.S. survey feet)

Witness: North: 1745585.63 East: 3061236.80 (U.S. survey feet)

Corner: center, seven inch diameter round wood corner post

Witness: 5/8-inch rebar with red plastic cap stamped

Montgomery Co. Witness Tie

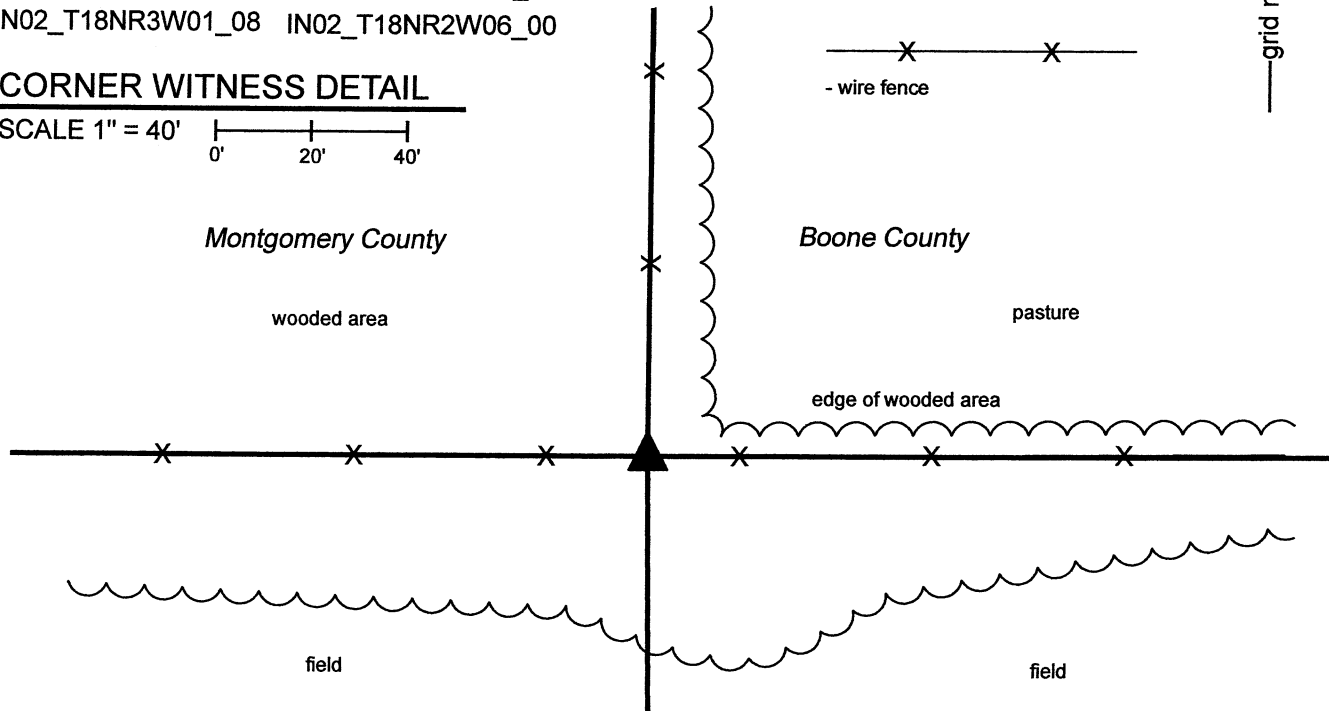
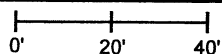
Indiana tie card references:

IN02_T19NR2W31_72 IN02_T19NR3W36_80

IN02_T18NR3W01_08 IN02_T18NR2W06_00

CORNER WITNESS DETAIL

SCALE 1" = 40'



The wood corner post was found in place and held as marking the corner. A BCS record dated March 16-17, 1858 states, with respect to this corner, "Reestablished by old Wit Tree. Set Rock 12,26." No recent BCS tie cards were found referencing the corner. A Section Corner Dossier sheet provided by the Office of the Montgomery County Surveyor, dated March 17, 2016, shows the corner as a round wood corner post.

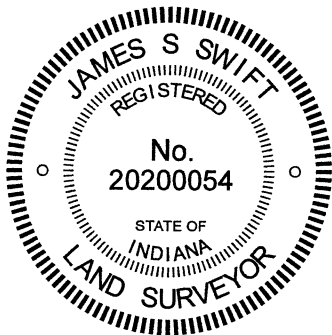
This corner was excavated on November 5, 2020. Several stones were found in the vicinity of the post, none of which matched the dimensions described in the 1858 record or otherwise appeared to represent corner stone monuments. The post is at the intersection of ancient fences to the north and east with relatively more recent fence to the west. It is noted that the post falls near the west edge of a small gully or ditch and that the stone called for in the 1858 record may have been removed by process of erosion associated with the gully.

The Montgomery County dossier shows the post as witnessed by a 5/8-inch rebar with plastic cap stamped "Montgomery Co. Witness Tie. This monument was found in good condition, evidently undisturbed 0.44 of a foot south of the south edge of the post. The rebar is held as a witness and the position of the center of the base of the post is held as the specific position of the corner.

This corner was originally established as a wood post in 1819.

Franklin Township Montgomery County	Jefferson Township Boone County
--	--

Section 36 T19N, R3W	Section 31 T19N, R2W
Section 1 T18N, R3W	Section 6 T18N, R2W



Kenneth E. Hedge
Kenneth E. Hedge, County Surveyor

James S. Swift
James S. Swift, IN LS 20200054

January 12, 2021

SECTION CORNER RECORD

NW 050-1100

BOONE COUNTY SURVEYOR'S OFFICE

State Plane grid coordinates NAD83 (2011):

Corner: North: 1748226.53 East: 3066641.25 (U.S. survey feet)

Witness: North: 1748226.53 East: 3066641.83 (U.S. survey feet)

Corner monument: Wood corner post

Witness monument: 5/8 inch rebar with metal cap stamped

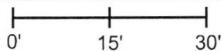
'Boone County Surveyor' 3 inches a.g.

Indiana tie card references:

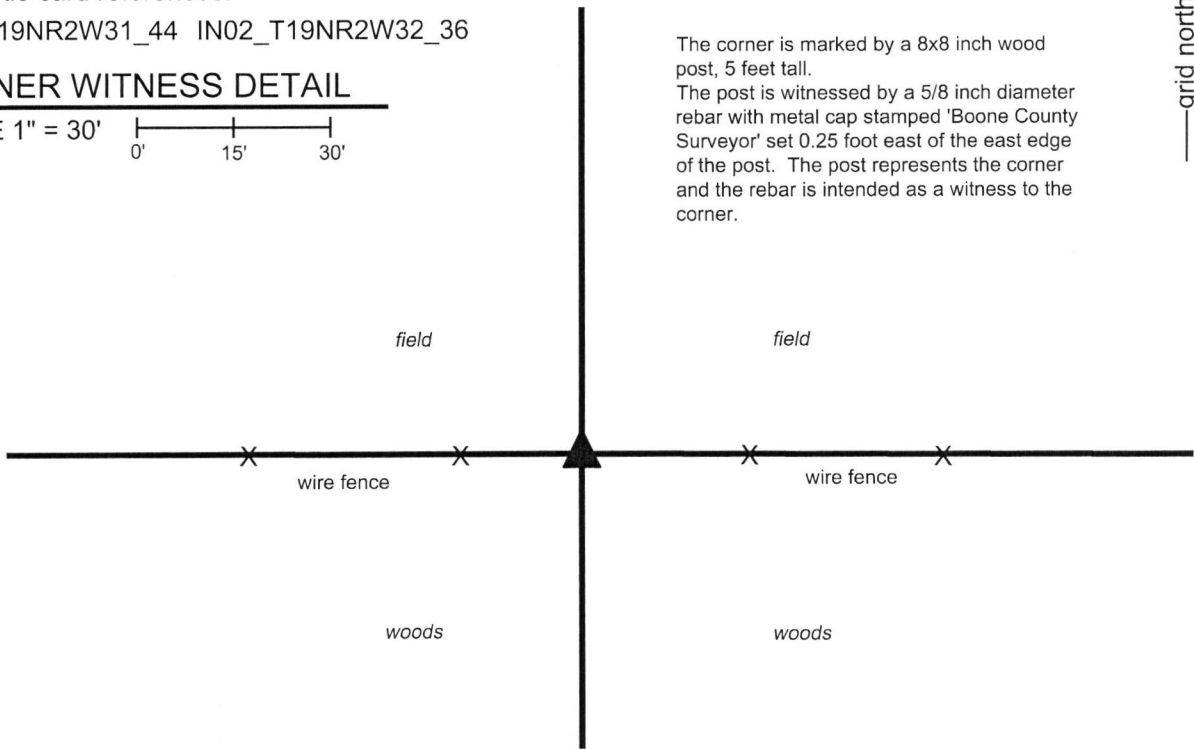
IN02_T19NR2W31_44 IN02_T19NR2W32_36

CORNER WITNESS DETAIL

SCALE 1" = 30'



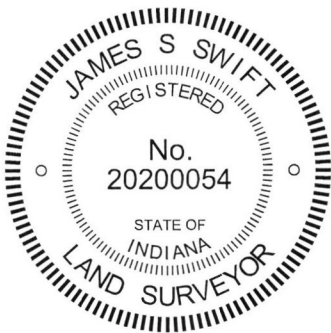
The corner is marked by a 8x8 inch wood post, 5 feet tall.
 The post is witnessed by a 5/8 inch diameter rebar with metal cap stamped 'Boone County Surveyor' set 0.25 foot east of the east edge of the post. The post represents the corner and the rebar is intended as a witness to the corner.



The wood corner post was found in place.

No specific descriptions of this corner were found in the BCS Surveyor's Record beyond the original establishment of the corner as a wood post in 1822. Neither recent BCS tie cards nor surveys recorded in the Boone County Recorder's Office were found referencing the corner. The corner is referenced in a metes and bounds description found in Instrument 0312629 in said Recorder's Office, which calls for a distance of 1323.96 feet between this corner and the northeast corner of the west half of the southwest quarter of section 32.

This corner was excavated on May 17, 2019. Prior to excavation, a wood corner post was found with standing fencing to the east and west and with fencing cut-off toward the north. The post is 8 inches square with a wood brace toward the west and the notch for a former brace toward the north. No stones were found around the post. Numerous stones were found in loose pile centered approximately 10 feet east of the post. None of these stones appeared to represent monuments purposely set to mark the corner. The distance between the post and a railroad spike found in the center of County Road 1075 West is approximately 2 feet less than the distance called in the aforementioned Instrument 0312629 for the line between the subject corner and the northeast corner of the west half of the southwest quarter. No rebars or other artificial survey monuments were found in the vicinity of the post. The post is clearly ancient and fits well with the relative positions of proximate corners. The post was accepted as the best available evidence of the corner. The post was left in place and is witnessed by a 30 inch length of 5/8 inch rebar with metal cap stamped 'Boone County Surveyor' set 0.25 feet east of the east edge of the post.



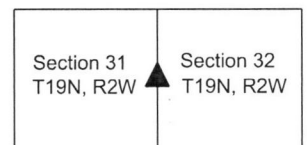
Kenneth E. Hedge

 Kenneth E. Hedge, County Surveyor

James S. Swift

 James S. Swift, IN LS 20200054
 June 12, 2019

Jefferson Township



SECTION CORNER RECORD

NW 050-1200

BOONE COUNTY SURVEYOR'S OFFICE

State Plane grid coordinates NAD83 (2011):

North: 1748234.50 East: 3061237.73 (U.S. survey feet)

North: 1748221.88 East: 3061237.73 (U.S. survey feet)

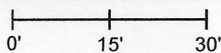
Corner 1: 5/8" diameter rebar with aluminum cap stamped 'Montgomery County Surveyor', 8 inches below grade

Corner 2: Harrison, 4" disk 'Section Corner' flush with adjacent ground

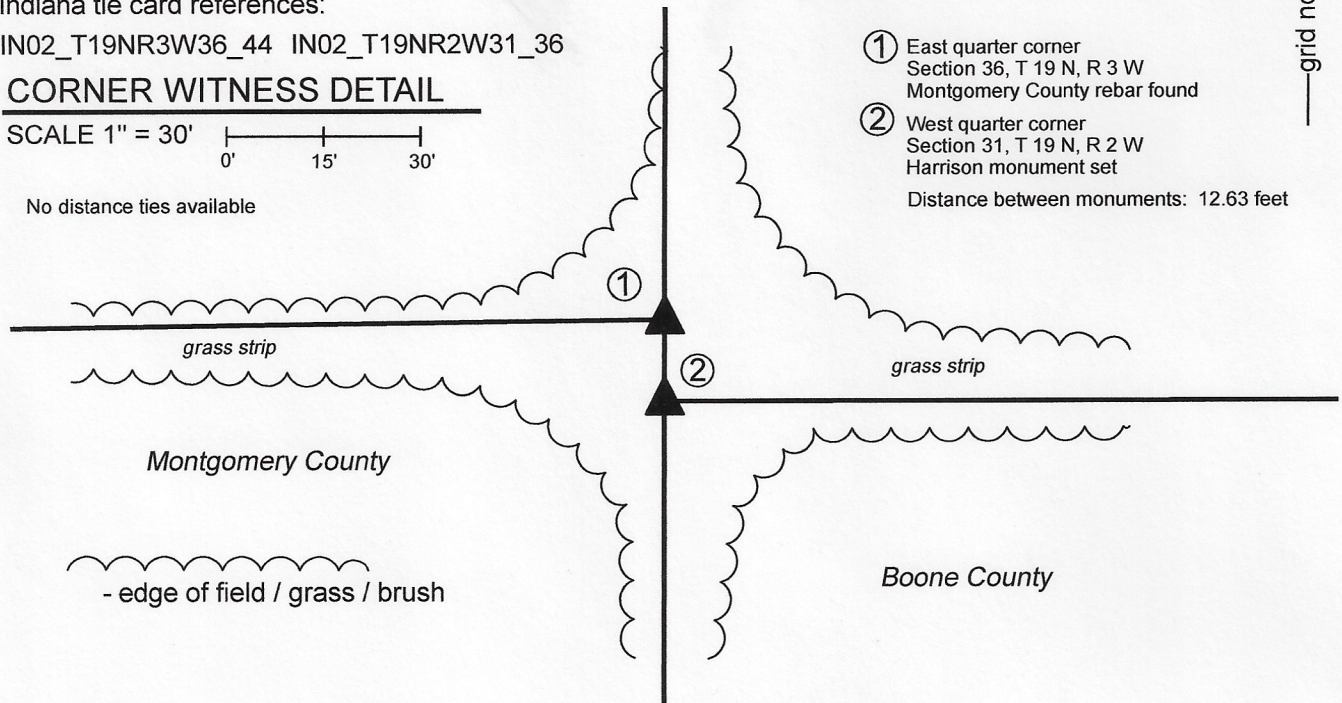
Indiana tie card references:

IN02_T19NR3W36_44 IN02_T19NR2W31_36

CORNER WITNESS DETAIL

SCALE 1" = 30' 

No distance ties available



① East quarter corner
Section 36, T 19 N, R 3 W
Montgomery County rebar found

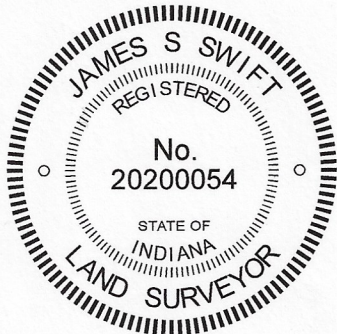
② West quarter corner
Section 31, T 19 N, R 2 W
Harrison monument set

Distance between monuments: 12.63 feet

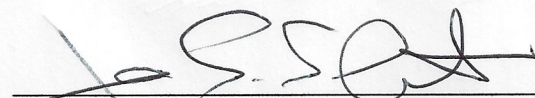
The Harrison Monument was set in place of a wood corner post and stone.

No specific descriptions of this corner were found in the BCS Surveyors Record. The corner is shown on an entry of November 12, 1850, but no description of a monument is included in that entry. No recent BCS tie cards were found referencing the corner. The associated standard corner, east quarter corner of section 36, T19N, R3W is referenced on a Section Corner Dossier provided by the Office of the Montgomery County Surveyor, which states that the standard corner is a 24 inch length of 5/8 inch rebar set in place of a stone. The dossier is dated April 24, 2016.

This corner was excavated on November 5, 2020. The rebar referenced on the Montgomery County Dossier was found in good condition, apparently undisturbed. The dossier shows a wood corner post at the apparent closing corner, being the Boone County corner. On November 5, the wood corner post was found lying on the ground, broken off at ground level. Excavation revealed the base of the post in the ground, slightly below flush, and also revealed a stone found slightly east of the base of the post. The stone was 12 inches tall by 7 inches E-W by 12 inches N-S at its maximum dimensions. The west edge of the stone was flat and vertical. The cross section of the west edge of the stone is triangular in shape and the stone had a distinct east-west ridge across the top. The stone did not appear to be bracing the post and did have the characteristics of a stone purposely set to mark the corner. The precise position of the corner was established on the range line as defined by the Montgomery County rebar at the standard corner and a wood corner post marking the southwest corner of section 31. The corner was established as the same distance south from the Montgomery County rebar as was the post and stone. This position fell at the east edge of the base of the post, and immediately west of the stone. The stone was removed and the top of the base of the post was cut away. A Harrison monument was set in concrete at this position. It is noted that the calculated average closing offset for these corners is 12 links or 7.9 feet. The distance between the corners is 12.63 feet. Both corner were set per reliable physical evidence, which is held as superior to computed offset distances.

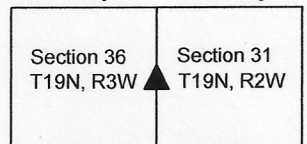



Kenneth E. Hedge, County Surveyor


James S. Swift, IN LS 20200054

November 18, 2020

Franklin Township Montgomery County	Jefferson Township Boone County
--	------------------------------------



SECTION CORNER RECORD

BOONE COUNTY SURVEYOR'S OFFICE

NW 100-1150

State Plane grid coordinates NAD83 (2011):
 North: 1750868.29 East: 3063979.78 (U.S. survey feet)

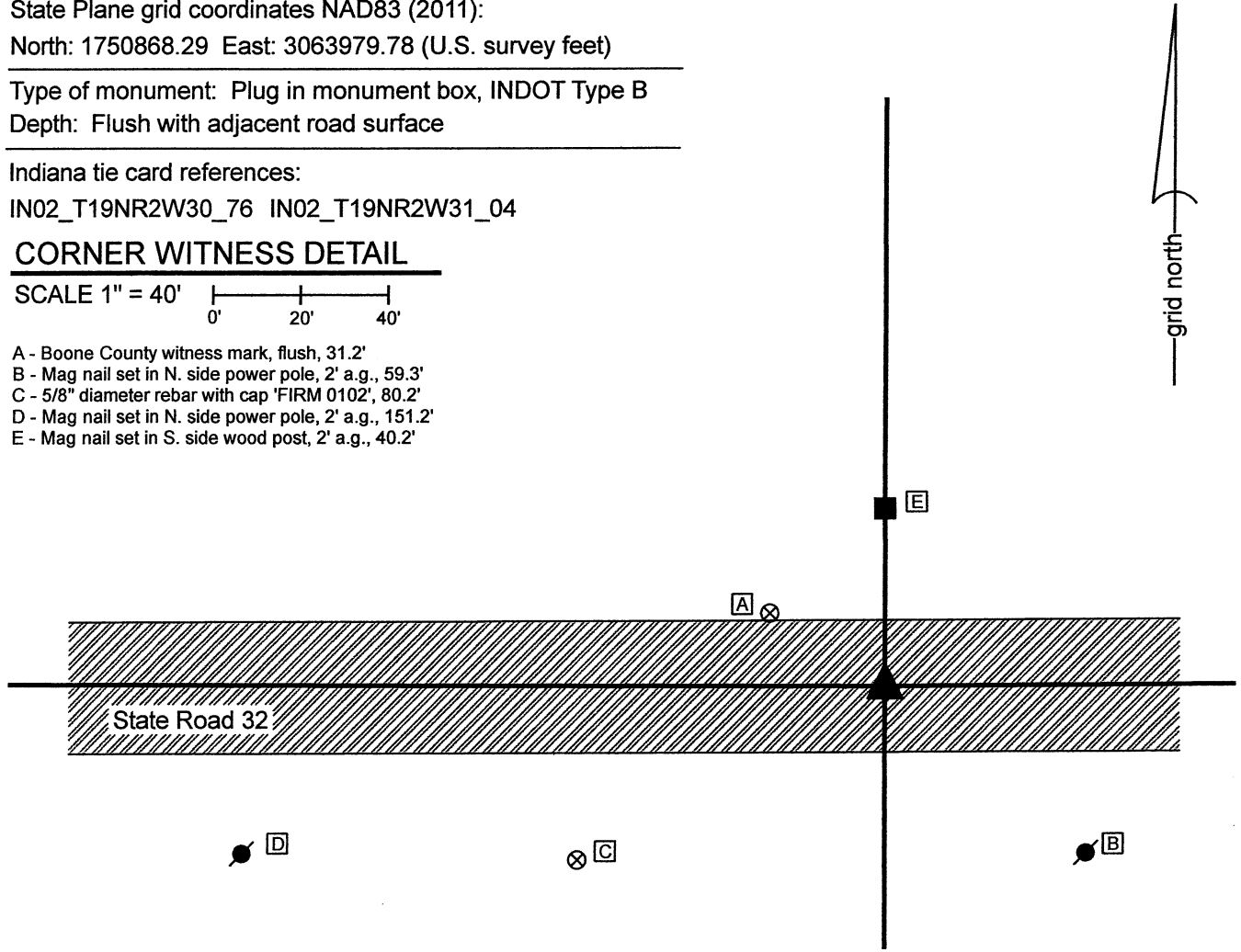
Type of monument: Plug in monument box, INDOT Type B
 Depth: Flush with adjacent road surface

Indiana tie card references:
 IN02_T19NR2W30_76 IN02_T19NR2W31_04

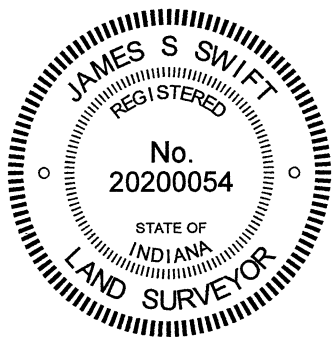
CORNER WITNESS DETAIL

SCALE 1" = 40'

- A - Boone County witness mark, flush, 31.2'
- B - Mag nail set in N. side power pole, 2' a.g., 59.3'
- C - 5/8" diameter rebar with cap 'FIRM 0102', 80.2'
- D - Mag nail set in N. side power pole, 2' a.g., 151.2'
- E - Mag nail set in S. side wood post, 2' a.g., 40.2'



The INDOT Type B Monument was found in place and held as marking the corner.
 No specific references to this corner were found in the BCS Surveyor's Record beyond the original establishment of the corner as a wood post in 1822. The corner is referenced as the terminal point for measurements in entries of 1850, 1852, 1858, and 1919, indicating that on those dates, some monument was present from which to measure. No recent BCS tie cards were found referencing this corner.
 A Survey Monument Replacement Surveyor's Report recorded as Instrument 200700005107 in the Office of the Boone County Recorder indicates that between May 2006 and May 2007 an existing monument, not identified, was replaced with a Type B monument. The report notes that the new monument was set 0.08 foot SE of the previous monument.
 No excavation was performed at this corner, as it falls in State Road 32. The Type B monument is located in a position which generally agrees with the original federal distances for the line between Sections 30 and 31, with respect to evidence of the southeast and southwest corners of Section 30, as well as the southeast corner of west half of the southeast quarter of Section 30. The monument was accepted as the best available evidence of the corner.



Kenneth E. Hedge
 Kenneth E. Hedge, County Surveyor

James S. Swift
 James S. Swift, IN LS 20200054
 June 16, 2021

