

SECTION CORNER RECORD

SE 500-600

BOONE COUNTY SURVEYOR'S OFFICE

State Plane grid coordinates NAD83 (2011):

Corner 1: North: 1719861.18 East: 3156725.08 (U.S. survey feet)

Corner 2: North: 1719937.06 East: 3156723.12 (U.S. survey feet)

Corner 1: Harrison, 4" disk 'Section Corner', flush

Corner 2: Harrison, 4" disk 'Section Corner', 6" above grade

Indiana tie card references:

IN02_T18NR1E25_80 IN02_T18NR2E30_72

IN02_T18NR1E36_08 IN02_T18NR2E31_00

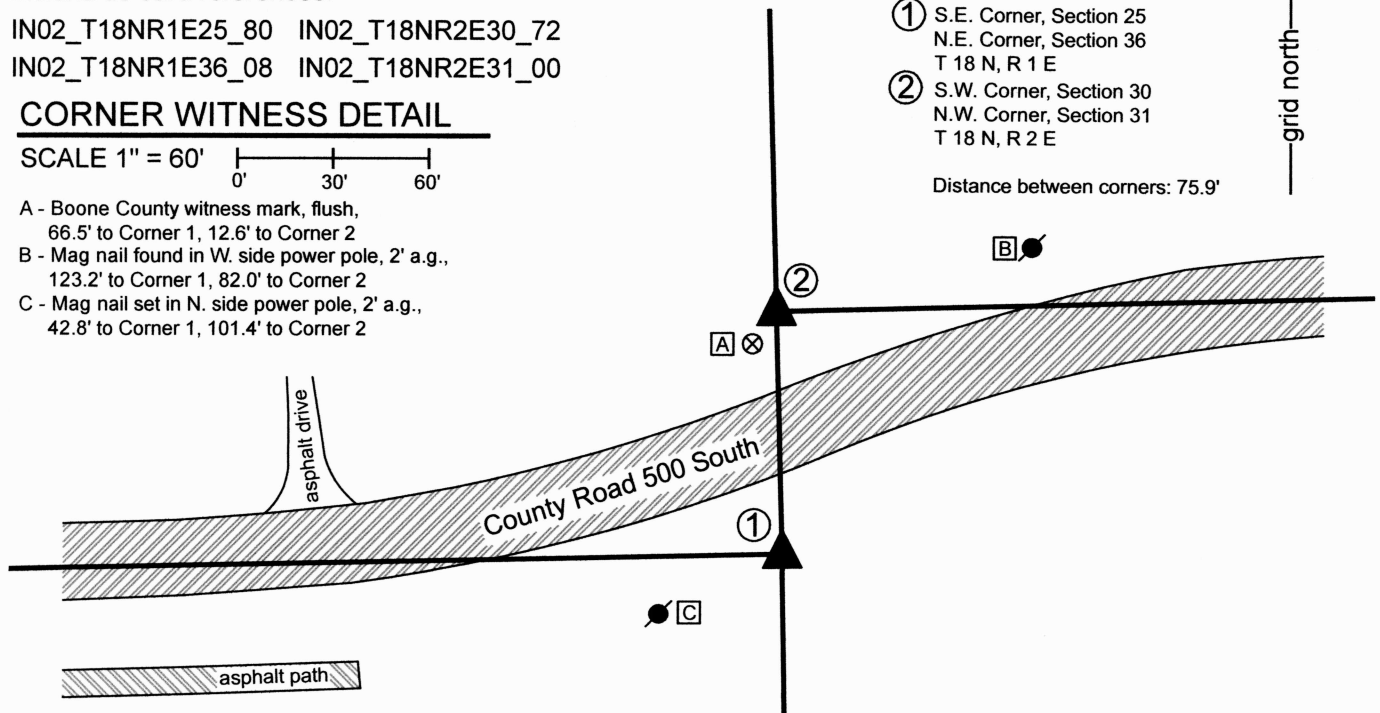
CORNER WITNESS DETAIL

SCALE 1" = 60'

- A - Boone County witness mark, flush, 66.5' to Corner 1, 12.6' to Corner 2
- B - Mag nail found in W. side power pole, 2' a.g., 123.2' to Corner 1, 82.0' to Corner 2
- C - Mag nail set in N. side power pole, 2' a.g., 42.8' to Corner 1, 101.4' to Corner 2

- ① S.E. Corner, Section 25
N.E. Corner, Section 36
T 18 N, R 1 E
- ② S.W. Corner, Section 30
N.W. Corner, Section 31
T 18 N, R 2 E

Distance between corners: 75.9'



The Harrison monument at Corner was found in place, as set in 2011. The Harrison monument at Corner 2 was set in place of a rebar which was set in 2011, but found disturbed in 2024.

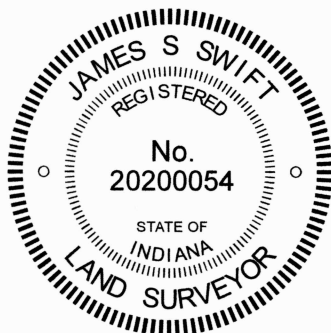
The documentation for this corner, as published in July 25, 2011, is as follows:

The Harrison monument at corner 1 was set in place of a Harrison monument found. The rebar at corner 2 was set on the range line at the record government closing distance from corner 1.

A BCS record dated August 30, 1869 states with respect to corner 1 "Found from stumps both trees. Drove no stake." A BCS record dated May 17, 1912 states with respect to corner 2 "Reestablished. Set rock. Good sized marked +." A BCS tie card dated November 28, 2005 shows the corner as a Harrison monument with no documentation of source, though the Harrison monument is in substantially the same position as a rebar shown on private surveys including a survey by American Consulting, Inc. recorded in Survey Book 8, page 15-16 in the Boone County Recorder's Office.

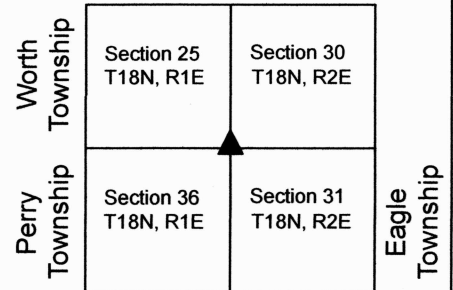
Corner 1 falls in an area which has clearly been disturbed and no evidence of the corner was found beyond the existing Harrison monument. It is noted that the position of the Harrison monument and the rebar which previously existed at the corner, fit very well with the extension of the existing roadway to the west and with the relative positions of the quarter corner 1/2 mile west and a railroad rail at the generally accepted quarter-quarter corner 1/4 mile west. The existing Harrison was held as the corner and a new Harrison monument was set in a more stable manner. Corner 2 falls near the toe of slope of an area of substantial fill for the adjacent roadway. A 3/8 inch rebar was found near the corner, but the small rebar fits with neither the original government closing distance, nor with the evidence of the section line in the form of the extended roadway to the east. Probing and limited excavation in the vicinity of the corner produced several small to medium sized rocks, none of which specifically appeared to be a section corner stone. No other evidence of this corner was found. Corner 2 was established on the range line at the record government closing distance of 115 links. This position fits well with the existing roadway to the east. A 5/8 inch diameter rebar, 3 feet long, was set at the corner, marked with an aluminum cap stamped 'Boone County Surveyor.' The 3/8 inch rebar is located 11.3 feet south of corner 2.

Corner 1 was originally established as a wood post in 1819 and corner 2 was originally established as a wood post in 1821.



Carol Cunningham
 Carol Cunningham, County Surveyor

James S. Swift
 James S. Swift, IN LS 20200054
 September 30, 2024



SECTION CORNER RECORD

SE 500-650

BOONE COUNTY SURVEYOR'S OFFICE

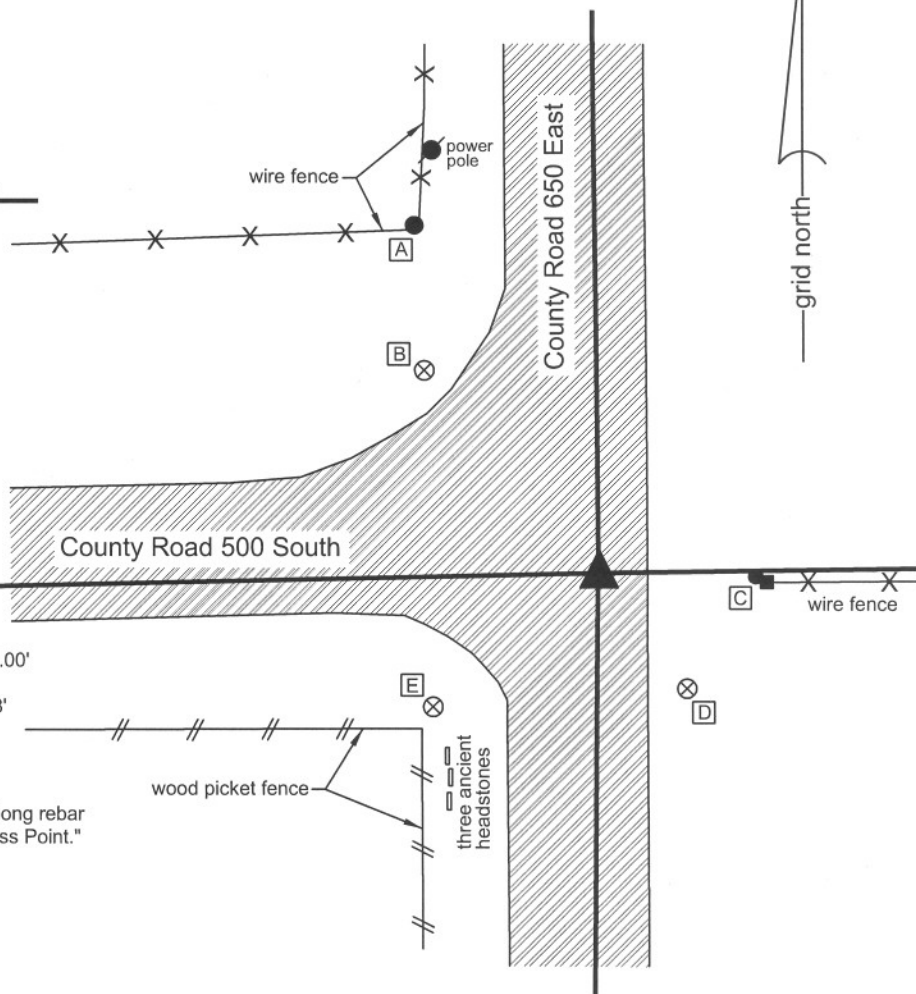
State Plane grid coordinates NAD83 (NSRS 2007):
North: 1719996.89 East: 3159441.69 (U.S. survey feet)

Type of monument: Harrison, 4" disk 'Section Corner'
Depth: 0.1' below adjacent road surface

Indiana tie card references:
IN02_T18NR2E30_76
IN02_T18NR2E31_04

CORNER WITNESS DETAIL

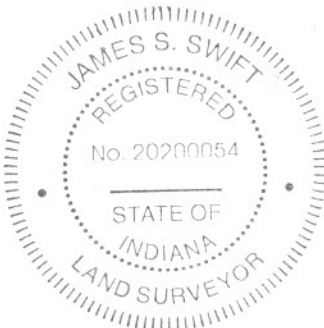
SCALE 1" = 30'



- A - Bottom, S.E. edge, round metal corner post, 60.00'
- B - Boone County witness mark, flush, 41.63'
- C - Mag nail set in W side, utility post, 1' a.g., 24.68'
- D - Boone County witness mark, flush, 22.75'
- E - Boone County witness mark, flush, 33.03'

Boone County witness mark is a 3/8" diameter x 2' long rebar bearing a metal cap stamped "Boone County Witness Point."

The Harrison monument was set in the place of a 30" section of railroad rail on end found and accepted as marking the corner. The top of the rail was 8 inches below the road surface. No specific record of the rail was found, though it is likely that the rail was set on or about October 25, 1968, per a BCS record of that date which states "set stake." The 1968 record did not state "no stone." A 6 inch long piece of rebar, the top of which was 2 inches below the surface of the road, was found directly above the railroad rail. The rail and rebar were both removed during excavation. A previous BCS record, dated January 9, 1871 states: "Re-est. from Oak Stump, Set two Rocks One 8.7.6 +, Top one 11.8.7 +". A four-foot by four-foot hole, centered on the rail, was excavated to a depth of 3 feet, which was well into the clay sub-base. The stones were not found. The existing evidence is ambiguous with respect to the possible location of the stones, if they are still present. This corner was originally established in July, 1821.

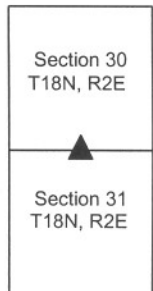


Kenneth E. Hedge
Kenneth E. Hedge, County Surveyor

J. S. Swift
James S. Swift, IN LS 20200054
January 30, 2008

Worth Township

Eagle Township



SECTION CORNER RECORD

BOONE COUNTY SURVEYOR'S OFFICE

SE 500-700

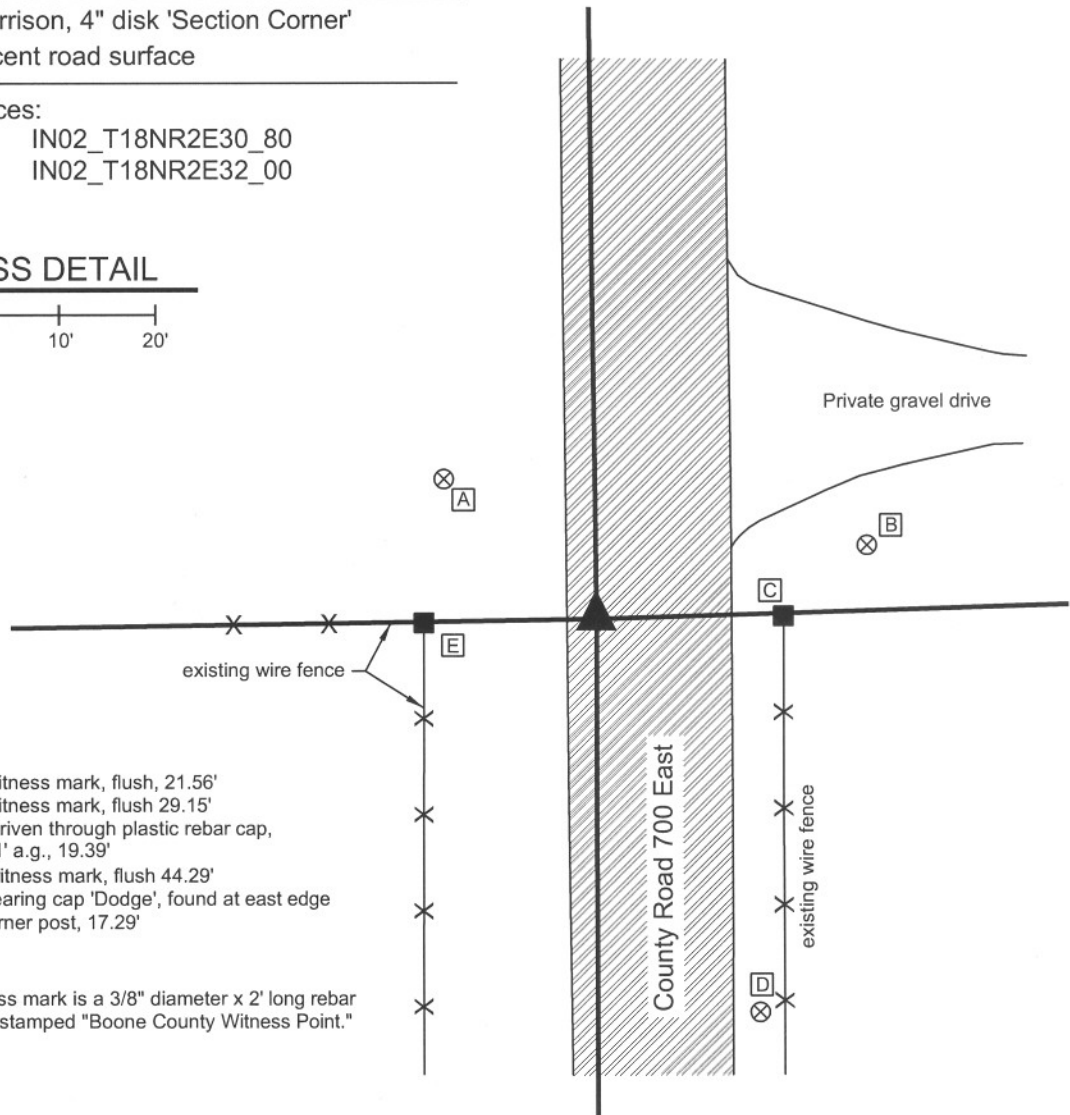
State Plane grid coordinates NAD83 (NSRS 2007):
 North: 1720034.42 East: 3162077.73 (U.S. survey feet)

Type of monument: Harrison, 4" disk 'Section Corner'
 Depth: 0.1' below adjacent road surface

Indiana tie card references:
 IN02_T18NR2E29_72 IN02_T18NR2E30_80
 IN02_T18NR2E31_08 IN02_T18NR2E32_00

CORNER WITNESS DETAIL

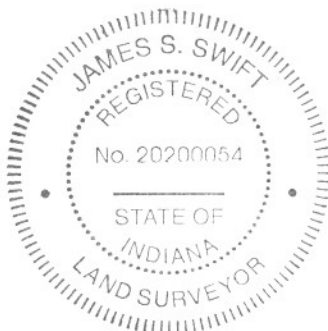
SCALE 1" = 20'
 0' 10' 20'



- A - Boone County witness mark, flush, 21.56'
- B - Boone County witness mark, flush 29.15'
- C - Mag nail found driven through plastic rebar cap, W. side post, 1.1' a.g., 19.39'
- D - Boone County witness mark, flush 44.29'
- E - 5/8 inch rebar bearing cap 'Dodge', found at east edge base of wood corner post, 17.29'

Boone County witness mark is a 3/8" diameter x 2' long rebar bearing a metal cap stamped "Boone County Witness Point."

The Harrison monument was set in place of a 5/8 inch rebar found and accepted as marking the corner. A previous BCS record dated August 19, 1903 states "Established corner by intersecting lines. Set rock 18x12x12 +. Cedar post 12x12 N8°W 19 links." A 3 foot wide (N-S) by 12 foot long (E-W) hole was excavated to the clay sub-base. The hole was centered N-S on the existing fence end posts on the east and west sides of the road and extended from the west edge of the pavement to across the physical centerline. The stone was not found in this area of excavation. The found 5/8 inch rebar was near the west edge of the road, approximately 0.1 below grade and visible within a small hole. Another rebar, bearing the cap "Witness point" was found 1 foot east of the visible rebar. Recent recorded surveys have held the visible, non-capped rebar. The Harrison monument was set in place of this rebar. Both rebars were removed during excavation. This corner was originally established in July, 1821.



Kenneth E. Hedge
 Kenneth E. Hedge, County Surveyor

James S. Swift
 James S. Swift, IN LS 20200054
 January 30, 2008

Worth Township
 Eagle Township



SECTION CORNER RECORD

SE 550-600

BOONE COUNTY SURVEYOR'S OFFICE

State Plane grid coordinates NAD83 (NSRS 2007):

North: 1717227.75 East: 3156765.01 North: 1717266.55 East: 3156763.94 (U.S. survey feet)

Type & depth of monument:

Standard corner (corner 1): Harrison, 4 inch disk "Section Corner", flush with adjacent ground

Closing corner (corner 2): Stone with divot in top, flush with adjacent ground.

Indiana tie card references:

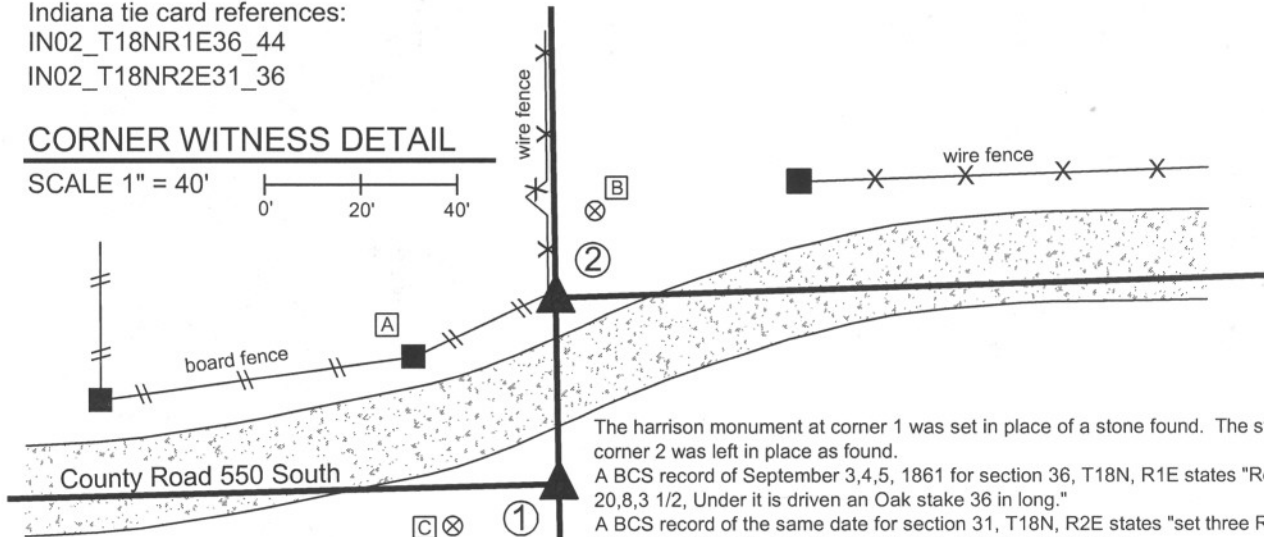
IN02_T18NR1E36_44

IN02_T18NR2E31_36

CORNER WITNESS DETAIL

SCALE 1" = 40'

0' 20' 40'



The harrison monument at corner 1 was set in place of a stone found. The stone at corner 2 was left in place as found.
A BCS record of September 3,4,5, 1861 for section 36, T18N, R1E states "Reestd. Rock 20,8,3 1/2, Under it is driven an Oak stake 36 in long."

A BCS record of the same date for section 31, T18N, R2E states "set three Rocks the under one 4.3 by 3, middle one 7.6 by 5. Top one 22.6 by 6."
No BCS tie cards were found for this set of corners.

The stone at the standard corner (W 1/4 corner, 36-18-1E) was found with a distinct top, high point at the level of the roots of the grass, slightly below flush. This stone measured 8 inches E-W by 3 1/2 inches N-S by 20 inches vertical. The stone was removed and remnants of the oak stake were found beginning at approximately 27 inches deep, which is coincident with the top of the clay layer. The old stake was in fragments, though discrenable as an object, and the wood material was clearly oak. A harrison monument was set at the position of the top, high point of the stone. A railroad rail was found flush with the adjoining ground 3.2 feet west of the stone. No BCS records were found indicating the source of the rail.

The stone at the closing corner (W 1/4 corner, 31-18-2E) was visible flush with the adjoining ground. The stone has a distinct high point with a hole chiseled in the top. The top 12 inches of the stone were exposed, at which point it remained stable in the ground. The E-W dimensions approximated the record 6 inches and the N-S dimensions were slightly less, at 12 inches down from the top. Fragments of an old post were found along the north edge of the stone. A modern wood corner post was found approximately 1 foot N and 1 foot W. A rebar bearing a metal cap stamped "Amer Cons Engr Indpls" was found 2.6 feet West of the stone.

The two records do not specifically mention the distance between the stones, but analysis of the separate records yields the calculation that they were intended to be set 57.5 links apart, or 37.95 feet. It is not clear that this distance was acutally measured, or whether they were both measured in from the township corner half-mile south. The physical distance between the two stones measured 38.80 feet. The stone at the closing corner falls 0.4 of a foot west of the line connecting the standard corner stone with a harrison monument at the northeast corner, section 36, T18N, R1E.

The preliminary surveys to the Anson Development show the rail as the standard corner and note the stone to be 2.66 feet east of the range line. See Instrument 200600009174, Survey Book 8, pages 11-12, among others.

① E. 1/4 corner, Section 36, T18N, R1E

② W. 1/4 corner, Section 31, T18N, R2E

Distance between monuments = 38.81'
Record calc. distance = 57.5 links (37.95')
see records of September 3,4,5, 1861

- A - Mag nail set in E. side wood post, 1' a.g., 40.2' to corner 1, 31.6' to corner 2
- B - Boone County witness mark, flush, 57.46' to corner 1, 20.16' to corner 2
- C - Boone County witness mark, flush, 23.79' to corner 1, 51.92' to corner 2

Boone County witness mark is a 3/8" diameter x 2' long rebarbearing a metal cap stamped "Boone County Witness Point."



Kenneth E. Hedge
Kenneth E. Hedge, County Surveyor

James S. Swift
James S. Swift, IN LS 20200054
March 11, 2009

Perry Twp Eagle Twp

Section 36 T18N, R1E	Section 31 T18N, R2E
-------------------------	-------------------------

PHOTOGRAPHIC DOCUMENTATION

Date of photography: June 21 & October 28, 2008

Top of standard corner stone as exposed at level of grass roots.



Closing corner stone from above.



Standard corner stone partially exposed, view from north.



View of standard corner stone from south looking across County Road 550 South and along the range line to the north.



Remnants of oak stake found in clay under standard corner stone (see other sheet.)



For details and documentation, refer to related sheet "Section Corner Record."

SECTION CORNER RECORD

SE 550-600

BOONE COUNTY SURVEYOR'S OFFICE

State Plane grid coordinates NAD83 (2011):

Corner 1: North: 1717227.74 East: 3156765.13 (U.S. survey feet)

Corner 2: North: 1717266.54 East: 3156764.07 (U.S. survey feet)

Corner 1: 1/4-inch hole drilled in sidewalk, flush

Corner 2: Stone with divot in top, 4" below grade

Indiana tie card references:

IN02_T18NR1E36_44 IN02_T18NR2E31_36

CORNER WITNESS DETAIL

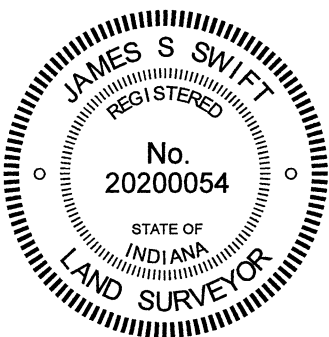
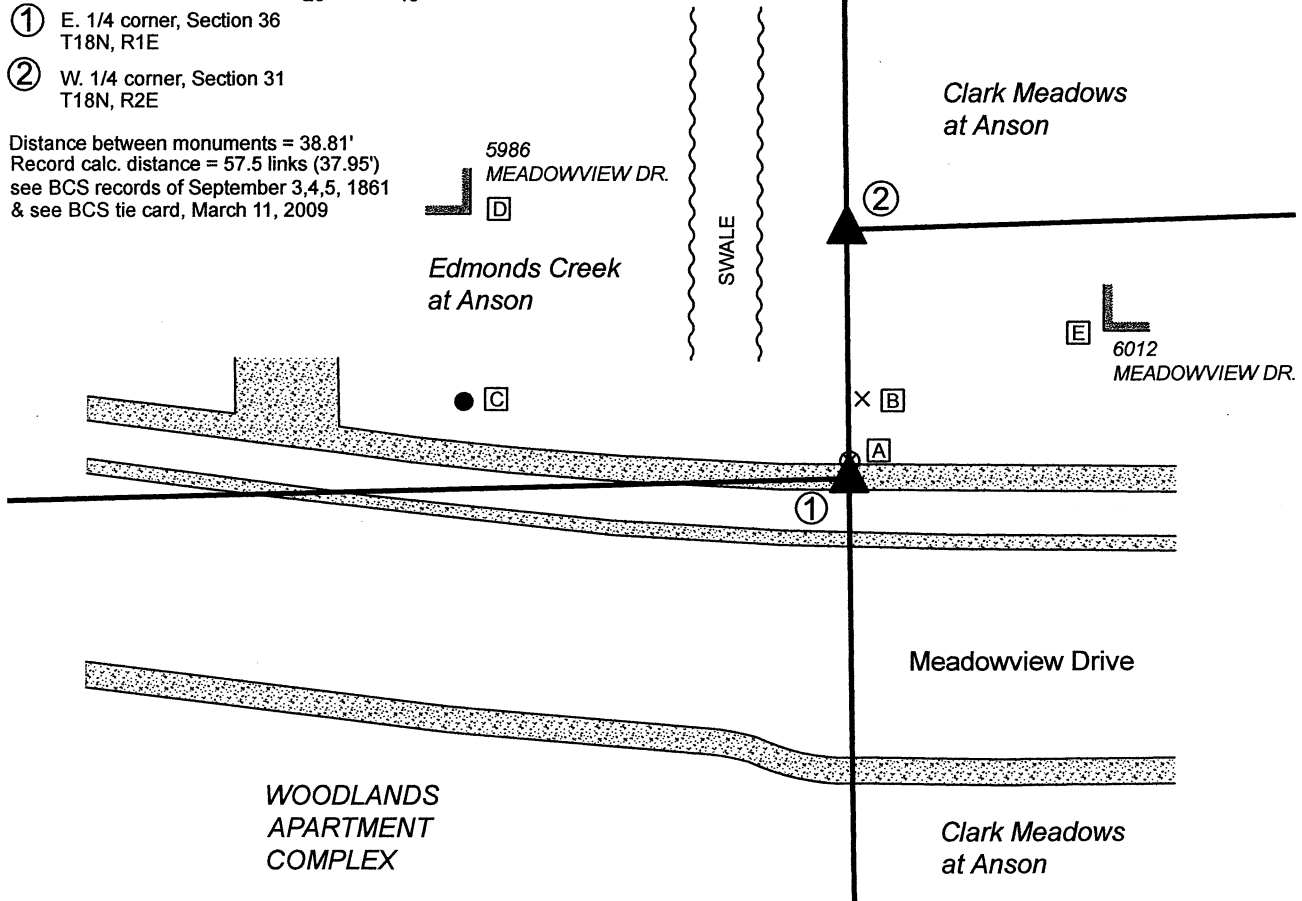
SCALE 1" = 40'

① E. 1/4 corner, Section 36
T18N, R1E

② W. 1/4 corner, Section 31
T18N, R2E

Distance between monuments = 38.81'
Record calc. distance = 57.5 links (37.95')
see BCS records of September 3,4,5, 1861
& see BCS tie card, March 11, 2009

- A - Boone County witness mark, flush, set on line between stone and drill hole, 2.8' to Corner 1, 36.0' to Corner 2
- B - Chisel mark on N. side manhole casting 12.7' to Corner 1, 26.5' to Corner 2
- C - East edge flagpole, 2' a.g., 61.7' to Corner 1, 65.1' to Corner 2
- D - S.E. cor, brick house, 2' a.g., 72.6' to Corner 1, 58.7' to Corner 2
- E - S.W. cor, house, 7' a.g. 45.8' to Corner 1, 43.6' to Corner 2



Kenneth E. Hedge
Kenneth E. Hedge, County Surveyor

James S. Swift
James S. Swift, IN LS 20200054

Perry Twp Eagle Twp

Section 36 T18N, R1E	Section 31 T18N, R2E
-------------------------	-------------------------

SECTION CORNER RECORD

SE 550-600

BOONE COUNTY SURVEYOR'S OFFICE

WRITTEN DOCUMENTATION

The stone at Corner 2 was found undisturbed. Corner 1 was previously marked by a Harrison monument which has been removed during construction. This position was marked by a ½-inch diameter hole drilled in a concrete sidewalk. Please refer to the most recent documentation for this corner, Section Corner Record SE 550-600, dated March 11, 2009. That document explains the perpetuation of these corners as follows:

The Harrison monument at Corner 1 (replaced 2021 with a drill hole in concrete) was set in place of a stone found. The stone at Corner 2 was left in place as found.

A BCS record of September 3,4,5, 1861 for section 36, T18N, R1E states "Reestd. Rock 20,8,3 1/2, Under it is driven an Oak stake 36 in long." A BCS record of the same date for section 31, T18N, R2E states "set three Rocks the under one 4.3 by 3, middle one 7.6 by 5. Top one 22.6 by 6."

No BCS tie cards were found for this set of corners (prior to 2009).

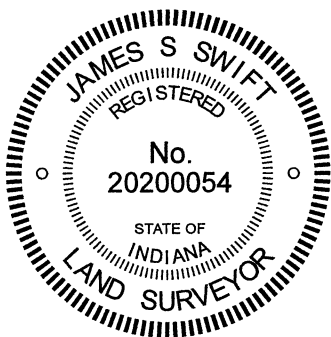
The stone at the standard corner (Corner 1, E 1/4 corner, 36-18-1E) was found with a distinct top, high point at the level of the roots of the grass, slightly below flush. This stone measured 8 inches E-W by 3 1/2 inches N-S by 20 inches vertical.

The stone was removed and remnants of the oak stake were found beginning at approximately 27 inches deep, which is coincident with the top of the clay layer. The old stake was in fragments, though discernable as an object, and the wood material was clearly oak. A Harrison monument was set at the position of the top, high point of the stone. A railroad rail was found flush with the adjoining ground 3.2 feet west of the stone. No BCS records were found indicating the source of the rail.


The stone at the closing corner (Corner 2, W 1/4 corner, 31-18-2E) was visible flush with the adjoining ground. The stone has a distinct high point with a hole chiseled in the top. The top 12 inches of the stone were exposed, at which point it remained stable in the ground. The E-W dimensions approximated the record 6 inches and the N-S dimensions were slightly less, at 12 inches down from the top. Fragments of an old post were found along the north edge of the stone. A modern wood corner post was found approximately 1 foot N and 1 foot W. A rebar bearing a metal cap stamped "Amer Cons Engr Indpls" was found 2.6 feet West of the stone.

The two records do not specifically mention the distance between the stones, but analysis of the separate records yields the calculation that they were intended to be set 57.5 links apart, or 37.95 feet. It is not clear that this distance was physically measured, or whether they were both measured independently from the township corner half-mile south. The physical distance between the two stones measured 38.81 feet. The stone at the closing corner falls 0.4 of a foot west of the line connecting the standard corner stone with a Harrison monument at the northeast corner, section 36, T18N, R1E. The preliminary surveys to the Anson Development show the rail as the standard corner and note the stone to be 2.66 feet east of the range line. See Instrument 200600009174, Survey Book 8, pages 11-12, among others. 2021 note: Surveys and plats for the adjoining subdivisions, created since 2009, hold the corners as established per the 2009 BCS Section Corner Record.

Variations between coordinates shown hereon and shown on the 2009 document represent variations in observed GPS positions with respect to the NAD83 (NSRS 2007) adjustment and the NAD83 (2011) adjustment.




Kenneth E. Hedge, County Surveyor


James S. Swift, IN LS 20200054

Perry Twp Eagle Twp

Section 36 T18N, R1E	Section 31 T18N, R2E
-------------------------	-------------------------

SECTION CORNER RECORD

SE 550-700

BOONE COUNTY SURVEYOR'S OFFICE

State Plane grid coordinates NAD83 (NSRS 2007):

North: 1717395.50 East: 3162083.98 (U.S. survey feet)

Type of monument: Harrison, 4" disk 'Section Corner'

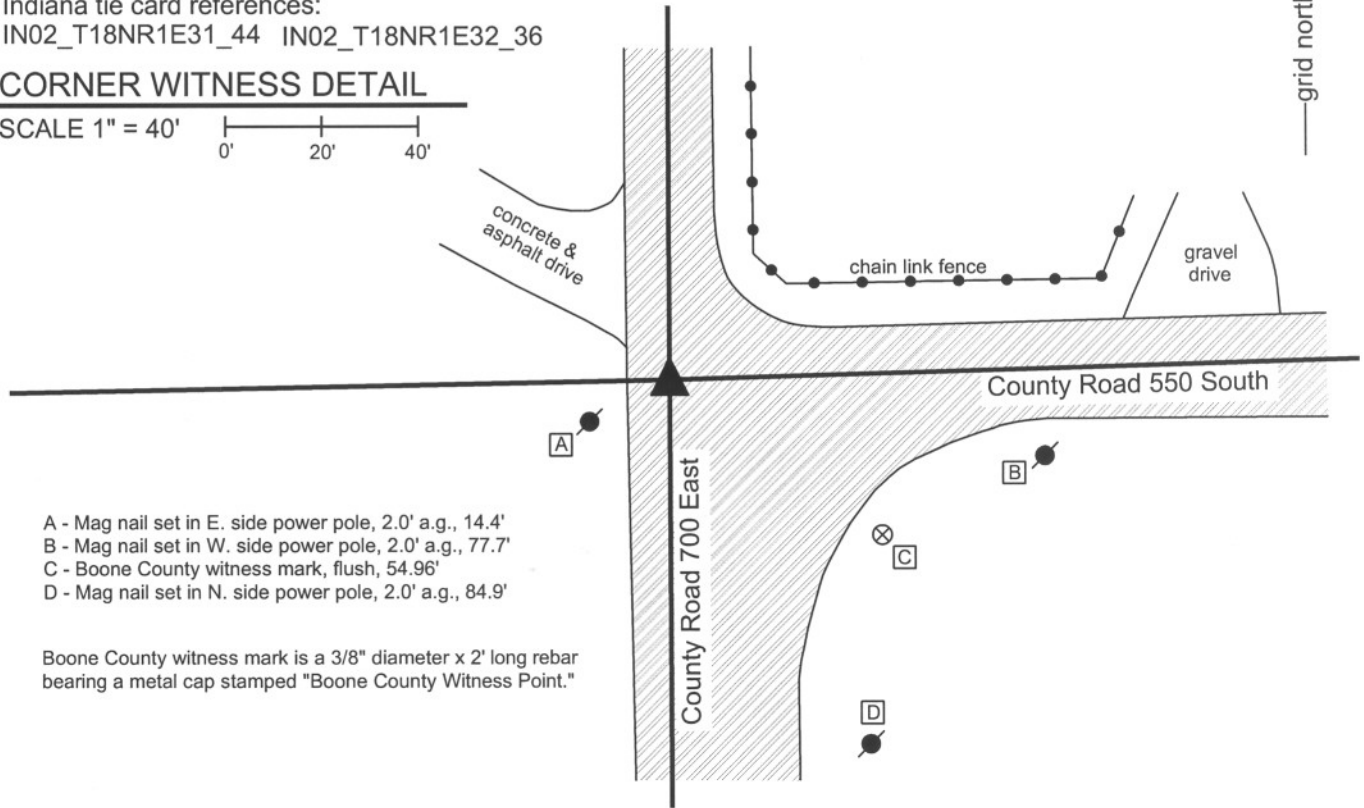
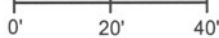
Depth: One inch below adjacent road surface

Indiana tie card references:

IN02_T18NR1E31_44 IN02_T18NR1E32_36

CORNER WITNESS DETAIL

SCALE 1" = 40'



- A - Mag nail set in E. side power pole, 2.0' a.g., 14.4'
- B - Mag nail set in W. side power pole, 2.0' a.g., 77.7'
- C - Boone County witness mark, flush, 54.96'
- D - Mag nail set in N. side power pole, 2.0' a.g., 84.9'

Boone County witness mark is a 3/8" diameter x 2' long rebar bearing a metal cap stamped "Boone County Witness Point."

The harrison monument was set over a stone found.

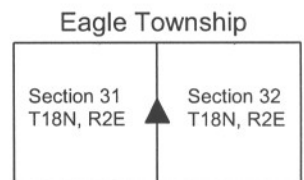
This corner is not specifically identified as being marked by a stone in the BCS Surveyor's Record. It is referenced as the terminal point for measurements in 1834, 1842 and 1903. A BCS tie card of May 19, 1994 shows conflicting information about the corner. The tie card calls a 5/8 inch rebar as marking the corner but also shows that the east-west section line is 4.1 feet north of the rebar. This corner was excavated on December 12, 2008. Prior to excavation, two mag nails were visible in the intersection, 4 feet apart in the N-S dimension. The south mag nail fit approximately with the ties shown on the 1994 tie card. The north mag appeared to fit with the tie card reference of the section line being 4.1 feet north of the corner. It is noted that the north mag nail fit better with the local evidence in the form of the center of County Road 550 South, bearing east from this corner. Both mag nails were removed during excavation. A 5/8 inch rebar was found at 0.2 foot below the surface of the road, approximately below the south Mag nail, being 0.14 foot west and 0.1 foot out of the nail. A railroad spike was found at approximately 1.5 foot deep, in the vicinity of the north mag nail. A stone was found below the railroad spike at 2 feet deep. The top 6 inches of the stone were exposed at which point it measures 12 inches N-S by 8 inches E-W. The stone was fully embedded in the clay, with the top 2 inches of the stone protruding into the base material at the bottom of the road. The stone clearly fits better with the center of County Road 500 South than the rebar did and fits with the reference of the tie card showing the section line being 4.1 feet north of the rebar. The harrison monument was set over the top, center of the stone, which point is 0.2 foot north and 0.35 foot east of the north mag nail and 4.2 feet north and 0.35 foot east of the south mag nail.

This corner was originally established as a wood post in July 1821.



Kenneth E. Hedge
 Kenneth E. Hedge, County Surveyor

James S. Swift
 James S. Swift, IN LS 20200054
 July 14, 2010



SECTION CORNER RECORD

SE 600-650

BOONE COUNTY SURVEYOR'S OFFICE

State Plane grid coordinates NAD83 (NSRS 2007):

Corner 1: North: 1714676.38 East: 3159403.70 (U.S. survey feet)

Corner 2: North: 1714684.29 East: 3159682.75 (U.S. survey feet)

Type & depth of monument:

Corner 1: Harrison (4" disk 'Section Corner'), flush

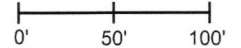
Corner 2: 5/8" rebar with metal cap ('Boone County Surveyor'), flush

Indiana tie card references:

IN02_T17NR2E06_04 IN02_T18NR2E31_72

CORNER WITNESS DETAIL

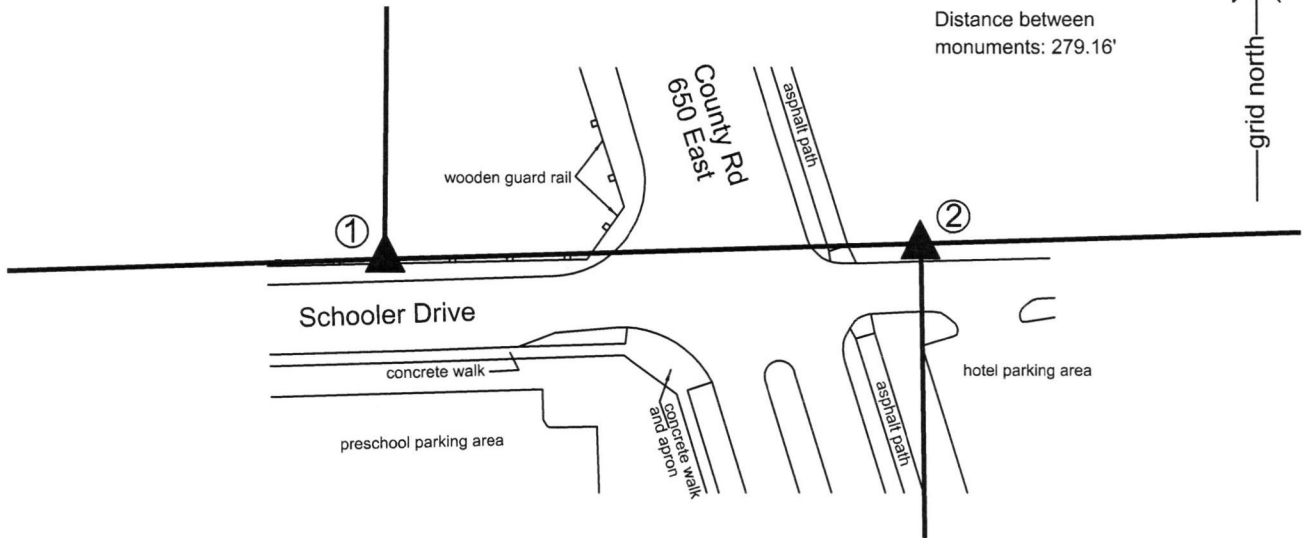
SCALE 1" = 100'



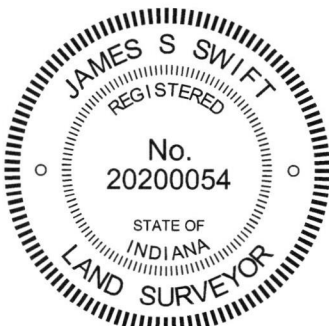
① South Quarter Corner
Section 31
T 18 N, R 2 E

② North Quarter Corner
Section 6
T 17 N, R 2 E

Distance between
monuments: 279.16'



The Harrison monument at Corner 1 was set in place of a rebar found. This rebar is known to have been held as the corner on many surveys and has a substantial history of being accepted as marking the corner on private surveys, including on the preliminary surveys for the Anson development by American Consulting, Inc., later called American Structurepoint, Inc. As found in 2008, the rebar was bent at the top, due to construction activity in the vicinity but the vertical shaft of the rebar was found to be undisturbed. The Harrison monument was set in place of the rebar in 2009. Minimal uncertainty is associated with the position of Corner 1. However, significant uncertainty is associated with the position of Corner 2. Due to the fact that Corner 2 was not set as part of the original federal survey, no record closing dimension was reported by the federal surveyors at this corner. The standard procedure for the north quarter corner of section 6 is to apply the record closing distance from the northeast corner of section 6, which is 390 links or 257.4 feet, and a BCS record of September 5, 1861 indicates that this method and distance were held for establishing corner 2. Some modern surveys, including the first set of surveys by American Consulting, see Survey Book 8, page 40 (Boone County Recorder's Office) among others, also hold the closing distance of 257.4 feet. However, later surveys by the same company hold a different position for the corner, being at 279.16 feet east of Corner 1. A survey by American Structurepoint recorded in Survey Book 12, page 39 notes the change and references the new position for the corner to a previous survey by Higby Land Surveying dated July 25, 1995. Other surveys, including a survey by Stoepelwerth and Associates recorded in Survey Book 8, page 1, hold a third position for the corner, being 269.49 feet east of the corner. All of the recorded surveys included notes which indicate that the area had been disturbed by construction and ancient evidence obliterated. Ultimately, American Structurepoint held the position for Corner 2 at 279.16 feet east of Corner 1 as the basis for surveying many original lines of the Anson Development, including alignment of reconstruction of County Road 650 East. Given the degree to which these new lines dominate the northwest quarter of section 6, this position is confirmed as the corner, noting that up to 22 feet of uncertainty exists with respect to the various interpretations of Corner 2. A 5/8 inch diameter rebar with a metal cap stamped 'Boone County Surveyor' was set at this corner in 2014 after construction in the immediate vicinity of the corner had reached a substantial point of completion.

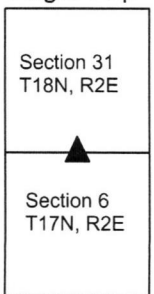


Kenneth E. Hedge
Kenneth E. Hedge, County Surveyor

James S. Swift
James S. Swift, IN LS 20200054

March 23, 2017

Eagle Twp



SECTION CORNER RECORD

SE 600-700

BOONE COUNTY SURVEYOR'S OFFICE

State Plane grid coordinates NAD83 (NSRS 2007):

Corner 1: North: 1714752.63 East: 3162095.24 (U.S. survey feet)

Corner 2: North: 1714760.44 East: 3162364.69 (U.S. survey feet)

Type of monument: Harrison, 4" disk 'Section Corner'

Depth: One inch deep (corner 1), three inches deep (corner 2)

Indiana tie card references:

IN02_T17NR2E05_00 IN02_T17NR2E06_08

IN02_T18NR2E31_80 IN02_T18NR2E32_72

- ① S.E. Corner, Section 31
S.W. Corner, Section 32
T 18 N, R 2 E
- ② N.W. Corner, Section 5
N.E. Corner, Section 6
T 17 N, R 2 E

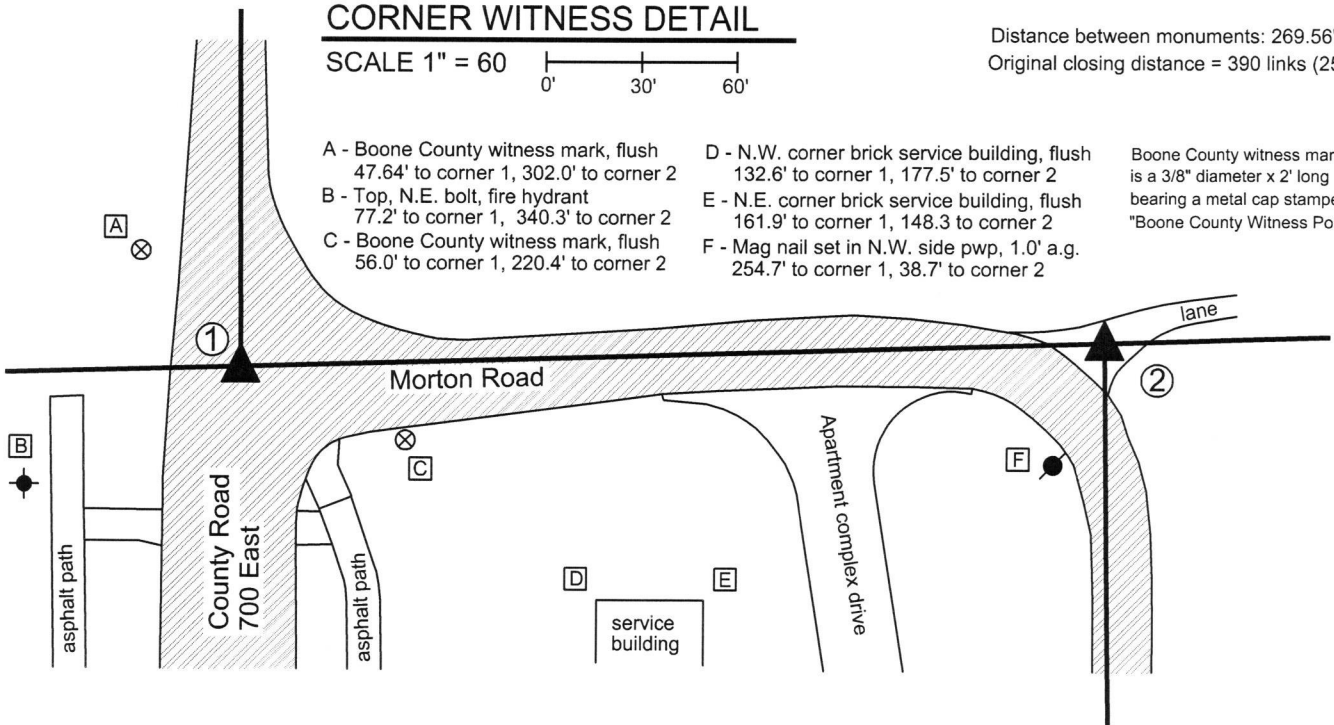


CORNER WITNESS DETAIL

SCALE 1" = 60' 0' 30' 60'

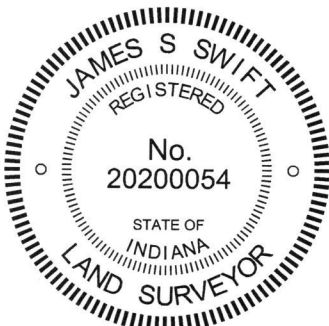
Distance between monuments: 269.56'
Original closing distance = 390 links (257.4')

- A - Boone County witness mark, flush 47.64' to corner 1, 302.0' to corner 2
 - B - Top, N.E. bolt, fire hydrant 77.2' to corner 1, 340.3' to corner 2
 - C - Boone County witness mark, flush 56.0' to corner 1, 220.4' to corner 2
 - D - N.W. corner brick service building, flush 132.6' to corner 1, 177.5' to corner 2
 - E - N.E. corner brick service building, flush 161.9' to corner 1, 148.3 to corner 2
 - F - Mag nail set in N.W. side pwp, 1.0' a.g. 254.7' to corner 1, 38.7' to corner 2
- Boone County witness mark is a 3/8" diameter x 2' long rebar bearing a metal cap stamped "Boone County Witness Point."



The Harrison monument at Corner 1 was set in a calculated position in the same position as a rebar which formerly marked the corner. A BCS tie card dated May 19, 1994 shows the corner as a 5/8 inch rebar. Numerous surveys have held this monument as the corner, including a survey by American Consulting, Inc. recorded in Survey Book 7, pages 21-22 in the Boone County Recorder's Office. It is believed that the rebar was removed during road construction in 2006. The position of the rebar was computed with respect to the relative locations of other monuments shown on the above referenced survey and other surveys by American Consulting, Inc. and American Structurepoint, Inc. (same company, different names.) A Harrison Monument was set at the calculated position in 2009.

A monument called on many surveys to be a rebar with a yellow cap, but which was actually an iron pipe with a yellow survey cap (markings illegible), has long been held as marking Corner 2. The area around the pipe was excavated on September 9, 2013. Excavation of an area extending 3 feet north, 3 feet south, 2.5 feet east and 2.5 feet west of the iron pipe yielded remnants of a wood stake approximately one foot south of the pipe. No other credible evidence of the corner was found during excavation. The iron pipe (called rebar on surveys) was held to define the east-west position of the corner. The north-south position of the pipe was not held, as the monument falls slightly south of the township line connecting Corner 1 with the standard corner approximately 1/2 mile to the east. The corner was established along the range line and a Harrison monument was set at this position, 0.4 foot north of the original position of the iron pipe with cap.



Kenneth E. Hedge
Kenneth E. Hedge, County Surveyor

James S. Swift
James S. Swift, IN LS 20200054
March 23, 2017

Eagle Township

