

SECTION CORNER RECORD

NE 700-600

BOONE COUNTY SURVEYOR'S OFFICE

State Plane grid coordinates NAD83 (2011):

Corner 1: North: 1783137.43 East: 3155919.39 (U.S. survey feet)

Type of monument: Harrison, 4" disk 'Section Corner'

Depth: Three inches above surrounding ground

Indiana tie card references:

IN02_T20NR2E30_72 IN02_T20NR1E25_80

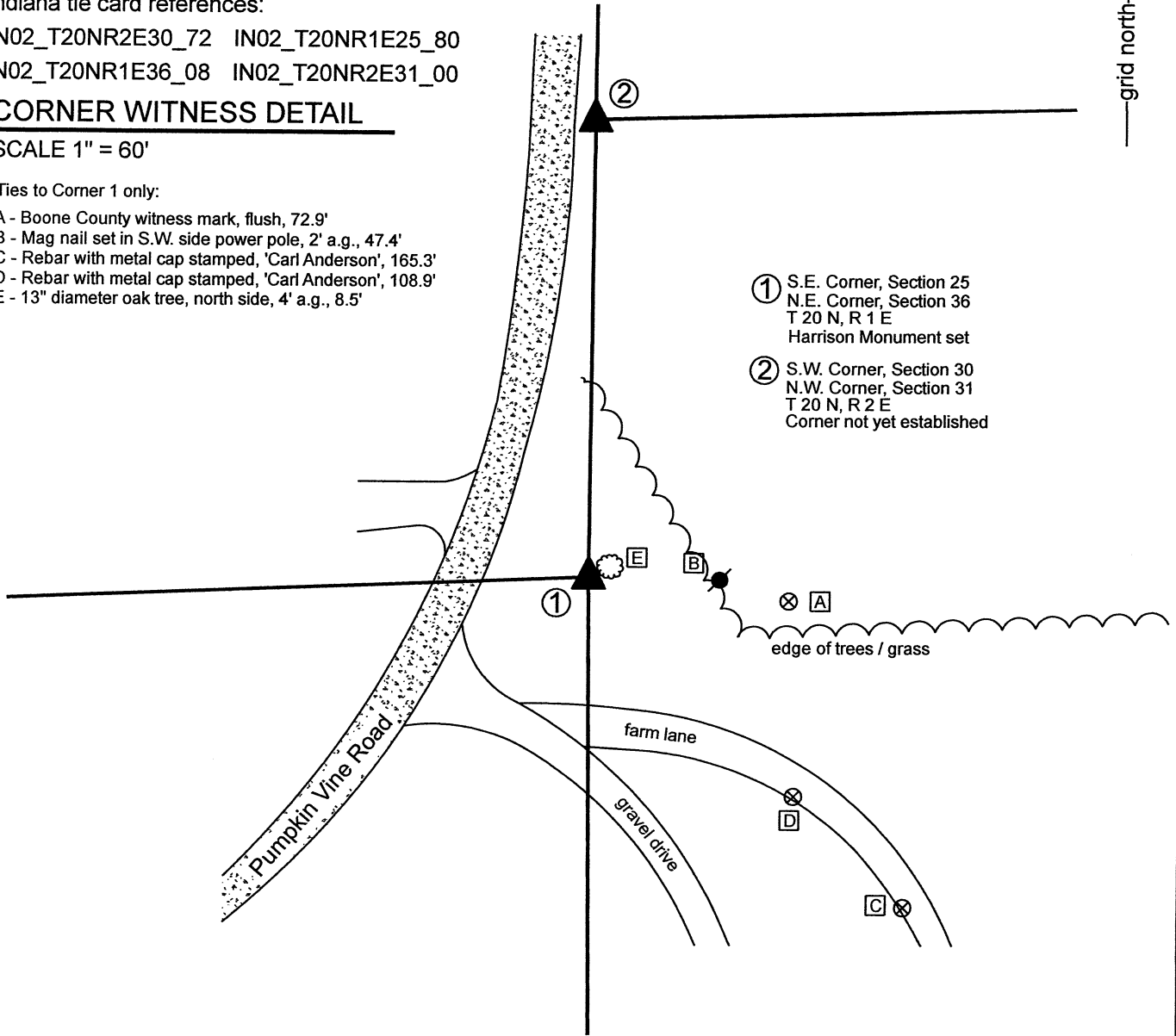
IN02_T20NR1E36_08 IN02_T20NR2E31_00

CORNER WITNESS DETAIL

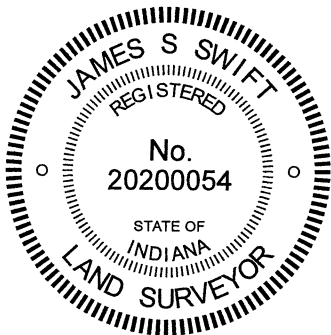
SCALE 1" = 60'

Ties to Corner 1 only:

- A - Boone County witness mark, flush, 72.9'
- B - Mag nail set in S.W. side power pole, 2' a.g., 47.4'
- C - Rebar with metal cap stamped, 'Carl Anderson', 165.3'
- D - Rebar with metal cap stamped, 'Carl Anderson', 108.9'
- E - 13" diameter oak tree, north side, 4' a.g., 8.5'



- ① S.E. Corner, Section 25
N.E. Corner, Section 36
T 20 N, R 1 E
Harrison Monument set
- ② S.W. Corner, Section 30
N.W. Corner, Section 31
T 20 N, R 2 E
Corner not yet established



Kenneth E. Hedge
Kenneth E. Hedge, County Surveyor

James S. Swift
James S. Swift, IN LS 20200054

Clinton Township	Marion Township
Section 25 T20N, R1E	Section 30 T20N, R2E
Section 36 T20N, R1E	Section 31 T20N, R2E

SECTION CORNER RECORD

BOONE COUNTY SURVEYOR'S OFFICE

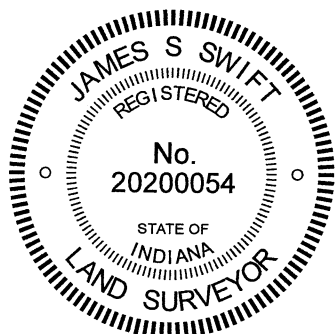
NE 700-600

WRITTEN DOCUMENTATION


The Harrison monument at Corner 1 was set in place of a rebar found. The precise position of Corner 2 has not been established as of the publication of this document. No specific descriptions of Corner 1 were found in the BCS Surveyor's Record beyond the original establishment of the corner as a wood post in 1819. Corner 2 is referenced in an entry of December 19-21, 1865 which states that the corner was "found by measuring from N.E. corner, Sect. 36." This record does not state what, if any, monument was set at that time nor does it specify by what 'measure' the corner was established.

Substantial reconnaissance was performed with respect to these corners and adjacent private properties to the southeast and southwest in November, 2020. A survey by Ronald A. Wharry, LS No. S0420 dated December 22, 1992, which is not recorded in the Office of the Boone County Recorder but was provided by an adjacent property owner shows Corner 1 as a rebar set and shows Corner 2 at or near a wood corner post. The rebar which set to mark Corner 1 as part of that survey was found in good condition, evidently undisturbed. The position of the monument was confirmed with respect to the relative positions of other monuments shown on the survey. The position of the corner works well with adjacent monuments and deed calls for properties to the southeast, southwest and northwest. A post shown as Corner 2 was also found. It is noted that the distance between the post and the rebar is 165.5 feet, substantially longer than the 213 link (140.6 feet) offset recorded by the federal surveyors in 1822. It is further noted that the position of the rebar marking Corner 1 works well with the available evidence of properties in Range 1 East and that the post appears to work with evidence in Range 2 East.

Probing and manual evidence in the immediate vicinity of the Wharry rebar revealed no stones or further evidence of Corner 1. Manual excavation in the vicinity of the wood post revealed several rocks, none of which appeared to represent corner stones. The Wharry rebar was accepted as the best available evidence of Corner 1 and was replaced with a Harrison monument on December 10, 2020. The position of Corner 2 remains uncertain, pending further investigation as well as excavation of the section corners approximately 1/2 mile north.




Kenneth E. Hedge, County Surveyor


James S. Swift, IN LS 20200054

SECTION CORNER RECORD

NE 700-650

BOONE COUNTY SURVEYOR'S OFFICE

State Plane grid coordinates NAD83 (2011):

CORNER: North: 1783374.22 East: 3158761.61 (U.S. survey feet)

WITNESS: North: 1783374.97 East: 3158761.61 (U.S. survey feet)

Type of monument at corner: Wood corner post.

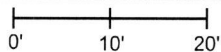
Witness monument: 5/8 inch rebar with metal cap 'Boone County Surveyor'

Indiana tie card references:

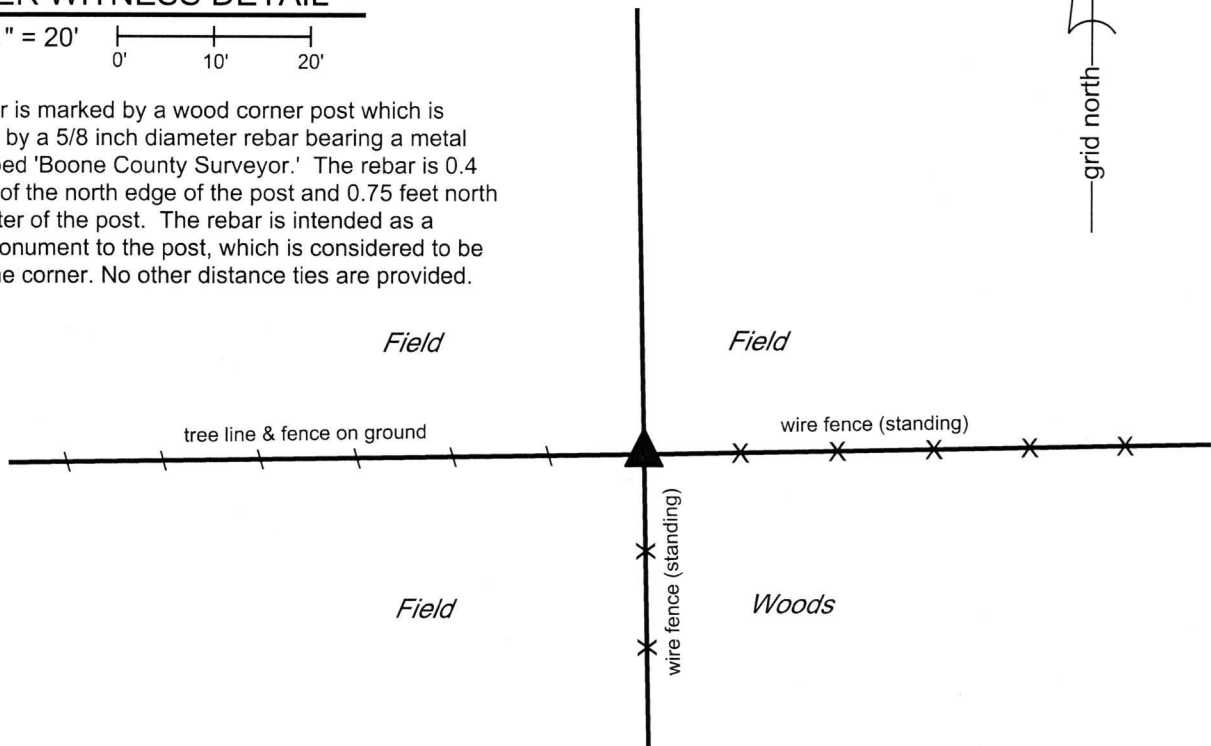
IN02_T20NR2E30_76 IN02_T20NR2E31_04

CORNER WITNESS DETAIL

SCALE 1" = 20'



The corner is marked by a wood corner post which is witnessed by a 5/8 inch diameter rebar bearing a metal cap stamped 'Boone County Surveyor.' The rebar is 0.4 feet north of the north edge of the post and 0.75 feet north of the center of the post. The rebar is intended as a witness monument to the post, which is considered to be marking the corner. No other distance ties are provided.

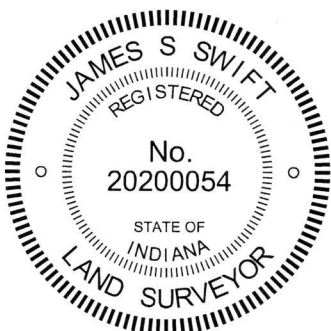


The wood post was found in place. The 5/8 inch rebar is intended as a witness to the wood post and is not intended to mark the corner.

No specific descriptions of this corner were found in the BCS Surveyor's Record. It is mentioned as the terminal point for measurements in a few records from the 1800s. No recent BCS tie cards were found referencing the corner.

This corner was excavated on March 15, 2018. Prior to excavation, a wood post was found at the intersection of standing fences to the south and east and a fence to the west which is mostly on the ground. Probing and manual excavation around the post revealed several stones, none of which bore the characteristics of a stone which had been purposely set to mark the corner. The presence of a tree at the southwest edge of the post rendered substantial probing in that quadrant unfeasible.

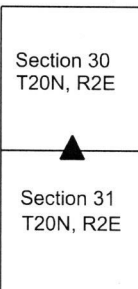
The position of the post fits well with proximate corners. The post was accepted as the best available evidence of the original position of the corner and was accepted as marking the corner. As the fences to the south and east are standing and reasonably well maintained, the post was left in place. As noted above, the rebar is intended as a witness to the post. The center of the post is held as marking the corner. This corner was originally established as a wood post in 1821.



Kenneth E. Hedge
Kenneth E. Hedge, County Surveyor

James S. Swift
James S. Swift, IN LS 20200054
April 3, 2018

Marion Township



SECTION CORNER RECORD

NE 700-700

BOONE COUNTY SURVEYOR'S OFFICE

State Plane grid coordinates NAD83 (2011):

North: 1783440.50 East: 3161404.58 (U.S. survey feet)

Type of monument: 5/8" diameter rebar with aluminum cap stamped 'Boone County Surveyor'

Depth: Fourteen inches below surrounding ground

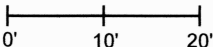
Indiana tie card references:

IN02_T20NR2E29_72 IN02_T20NR2E30_80

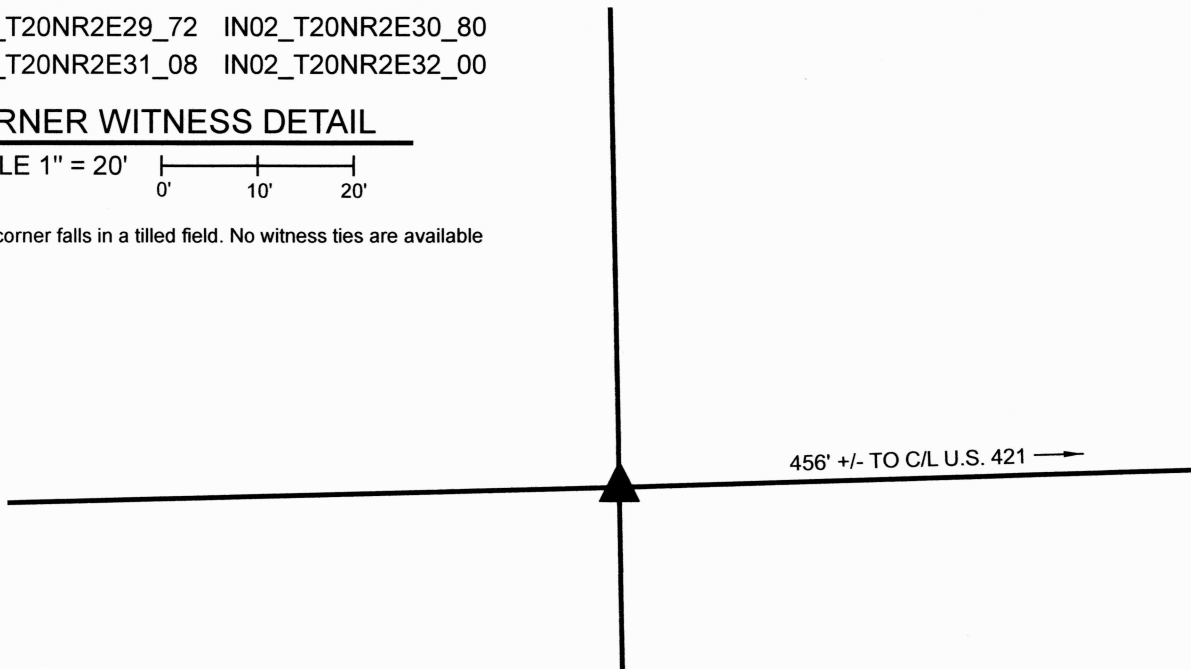
IN02_T20NR2E31_08 IN02_T20NR2E32_00

CORNER WITNESS DETAIL

SCALE 1" = 20'



This corner falls in a tilled field. No witness ties are available

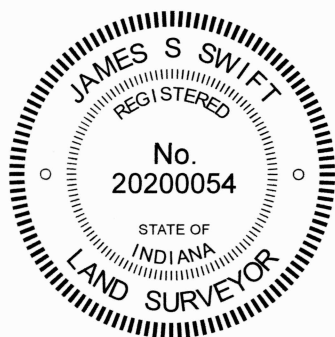


The rebar with Boone County Surveyor cap was set at a calculated position.

This corner was originally set as a wood post in 1822. Beyond that, no specific descriptions of the corner were found in the BCS Surveyor's Record, nor were any recent BCS tie cards or surveys recorded in the Office of the Boone County Recorder found which reference the corner. The corner is mentioned in Deed Record 253, page 20, as being 29 poles west of the center of U.S. 421. The corner is not shown on the 1930 plans for U.S. 421.

This corner falls in a tilled field. As recently as 2014, a distinct east-west field division existed in this immediate vicinity, but no field division was observed recently. Accessory evidence of the corner was observed to both the west and east, and the position of the corner was established with respect to that evidence. The corner was established in the north-south dimension on the westerly prolongation of a line extended west from the north quarter corner of Section 32 (see BCS Corner NE 700-750) through a point 1 rod (16.5 feet) north of an ancient wood corner post on the east side of U.S. 421. (see Instrument 200800001817 for references to the deed line being 1 rod south of the section line). The corner was computed in the east-west dimension as being at double the distance as was observed between said north quarter corner of Section 32 and a wood post providing evidence of the northeast corner of the west half of the northwest quarter of that section. Based on various other evidence, this position provides a best-fit solution, with uncertainties of approximately to 3 feet east and west. Manual excavation and probing in the vicinity of the computed position revealed various small scraps of wire in an east-west line, indicating the presence of a former east-west fence, and several small rocks in immediate proximity to each other, which may indicate the presence of a former corner post. Evidence of the actual post was not observed. The evidence found, wire and small rocks, worked well with the computed position. The deed reference to 29 poles west of the center of the road does not work with any accessory evidence and was not used to determine the position of the corner.

A 30-inch length of 5/8-inch diameter rebar was set at the computed position, fourteen inches deep, on February 2, 2024.



Carol Cunningham
Carol Cunningham, County Surveyor

James S. Swift
James S. Swift, IN LS 20200054

February 14, 2024

Marion Township

Section 30 T20N, R2E	Section 29 T20N, R2E
Section 31 T20N, R2E	Section 32 T20N, R2E

SECTION CORNER RECORD

NE 750-700

BOONE COUNTY SURVEYOR'S OFFICE

State Plane grid coordinates NAD83 (CORS96):
North: 1786086.06 East: 3161349.59 (U.S. survey feet)

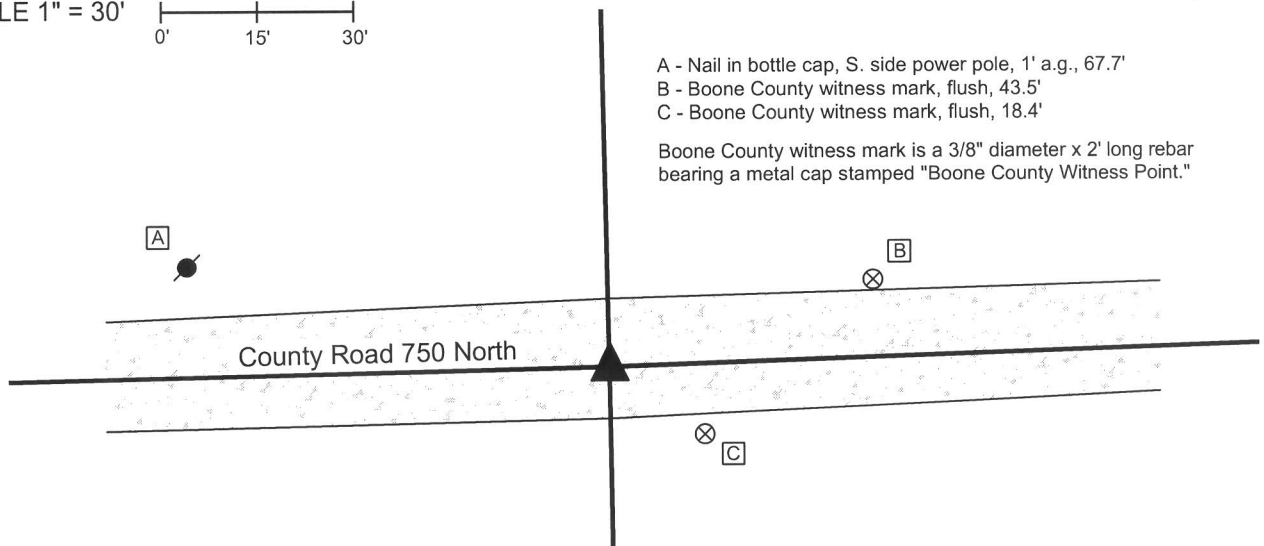
Type of monument: Harrison, 4" disk 'Section Corner'
Depth: six inches below adjacent gravel road surface

Indiana tie card references:
IN02_T20NR2E29_36
IN02_T20NR2E30_44



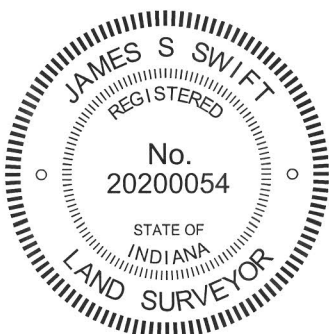
CORNER WITNESS DETAIL

SCALE 1" = 30'
0' 15' 30'



A - Nail in bottle cap, S. side power pole, 1' a.g., 67.7'
B - Boone County witness mark, flush, 43.5'
C - Boone County witness mark, flush, 18.4'
Boone County witness mark is a 3/8" diameter x 2' long rebar bearing a metal cap stamped "Boone County Witness Point."

The harrison monument was set over a stone found.
A BCS record of January 21-23, 1869 states "Reestablished from trees as Re-est. by Mr. Mullikin. Set two Rocks. One 12.12.5 1/2 marked +. Top Rock is 14.9.6 marked +." The reference to Mr. Millikin is thought to be a reference to James Mullikin, Boone County Surveyor from 1850 to 1852. A BCS tie card dated August 21, 1974 states "stone found."
This corner was excavated on September 19, 2013. Prior to excavation, a 5/8 inch diameter rebar was found at 5 inches deep in the gravel road. An orange rebar cap (markings illegible) was found nearby. Excavation revealed a stone found at 9 inches deep, south of the rebar. The stone appeared to have been knocked over, presumably by road grading equipment. Stood up, the stone measured 14 inches tall by 9 inches by 6 inches with a clearly etched "+" mark near the top. This stone was accepted as being the top stone described in the 1869 record. The stone was removed and another stone was found directly below at 19 inches deep. The lower stone appeared to be horizontal with a clearly etched "+" mark on top, which characteristics are consistent with other lower stones found at other corners where two stones, one above the other, have been found. The bottom stone was not measured but was accepted as being the lower stone in the 1869 record. The bottom stone was left in place and a harrison monument was set directly over the etched "+" mark on the stone. No ties remain from the 1974 tie card. It is not known whether the stone referred to in that record is the same as found. It has been observed at other corners that a common practice for BCS field crews from the late 1960s to early 1970s to remove a stone, if found, and replace it with either a vertical section of railroad rail or a section of 1/2 inch diameter rebar. The 5/8 inch rebar does not fit the character of monuments set by BCS field crews in that era. The found 5/8 inch rebar (removed during excavation) had been near the north edges of the stone, 0.7' north and 0.4' west of the mark found on the lower stone.
This corner was originally established as a wood post in 1821.



Kenneth E. Hedge
Kenneth E. Hedge, County Surveyor

James S. Swift
James S. Swift, IN LS 20200054
February 5, 2015

Marion Township

Section 30 T20N, R2E	▲	Section 29 T20N, R2E
-------------------------	---	-------------------------

PHOTOGRAPHIC DOCUMENTATION

Date of photography: September 19, 2013

View of the upper stone as first exposed.



View of the upper stone, exposed and stood up.



View of the lower stone and rebar.



View from the east, looking across the upper stone (stood up) and west along C.R. 750 North, to where it intersects U.S. 421 (Michigan Road.)



View of the lower stone, showing etched +.



For details and documentation, refer to related sheet "Section Corner Record."

SECTION CORNER RECORD

NE 800-600

BOONE COUNTY SURVEYOR'S OFFICE

State Plane grid coordinates NAD83 (2011):

Corner 1: North: 1788449.66 East: 3155925.81 (U.S. survey feet)

Corner 2: North: 1788627.86 East: 3155926.02 (U.S. survey feet)

Type and depth of monument:

Corner 1: Harrison, 4" disk 'Section Corner' 3 inches above grade

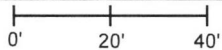
Corner 2: 5/8" rebar with metal cap 'Boone County Surveyor' 14 inches deep

Indiana tie card references:

IN02_T20NR1E24_80 IN02_T20NR2E19_72

IN02_T20NR1E25_08 IN02_T20NR2E30_00

CORNER WITNESS DETAIL

SCALE 1" = 40' 

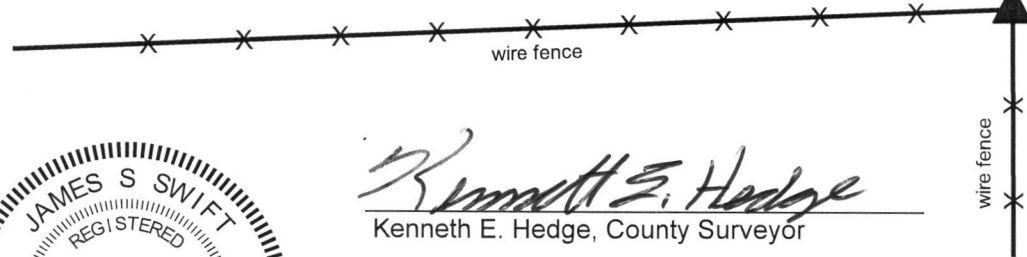
The Harrison monument at Corner 1 was set over remnants of a wood post found. The rebar at Corner 2 was set at a calculated position.

A BCS record of December 13 & 26, 1871 states, with respect to Corner 1, "Reestablished by running the line from D Section 25 North 79.80 to D of this Sect. I think the Oak B Tree was a little west of the range line but am not sure but it is gone. Placed corner in the middle of the line I run 39.80 from D and 270 links South of corner Section 19 & 30. Set a Rock 14.10.7 +." The record also includes a long note explaining the establishment of the south line of section 24.

A BCS record of December 20, 1870 states, with respect to Corner 2, "SW cor Sect [19] Reestablished at intersection of Range line with South line Sect from E to e & F to f. Set a Rock 8.6. by 5 1/2 + & a stake under it."

Excavation was performed at Corner 1 on April 25, 2018. Prior to excavation, standing fences were visible to the south and west of the corner, but the immediate vicinity of the corner was clearly disturbed, with a variety of rocks and old fencing piled together at the point where the standing fences intersect and also slightly SW of that point. The rubble was removed from the apparent position of the corner and substantial manual excavation was performed in this immediate vicinity. The stone 14.10.7 stone called for in the December 13 & 26, 1871 record was not found. It is considered most likely that the stone was removed prior to or during the obvious disruption of the corner which caused the pile of rubble. However, remnants of a wood post were found at 10 inches deep at the exact point where the fences from the south and west appear to intersect. The post appeared to be of the same size and character as the posts supporting the standing fencing to the south and west. The remnants of the post were accepted as representing the best available evidence of the corner and were held as marking the corner. It is noted that this corner, together with the south quarter corner and southwest corner of Section 24 (see corners NE 800-500 and NE 800-550) fall close to a straight line, which correlates with the explanatory notes from the 1871 record discussing the establishment of the south line of Section 24.

Corner 2 falls in a tilled field. The position of Corner 2 was computed on the range line at 270 links north of Corner 1. Excavation in the vicinity of this calculated position on April 27, 2018 revealed various pieces of broken clay tile at up to 12 inches deep, indicating previous disturbance of this corner. A 30 inch length of 5/8 inch rebar was set at the calculated position. The rebar was set 14 inches below the surface grade of the field and capped with a metal cap stamped 'Boone County Surveyor.' The 270 links (178.2') distance was held as firm, though a scale factor of 1.00451 is typically applied to distances reported in records from 1860 to 1895. An uncertainty of approximately 0.8 foot N-S is therefore associated with the position of Corner 2 with respect to the offset distance held.

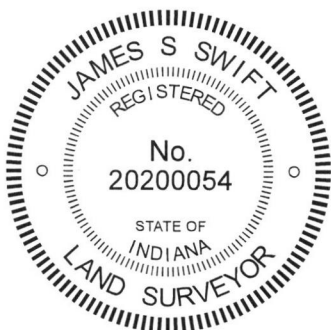


② S.W. Corner, Section 19
N.W. Corner, Section 30
T 20 N, R 2 E

The Harrison monument at Corner 1 is situated at the intersection of standing fences to the south and west, witnessed by an orange fiberglass lathe labeled 'Survey Markef.' The monument is adjacent to and northeast of a pile of rocks and fencing. Corner 2 falls within a tilled field, set at 14 inches below grade and is not visible on the surface. No other distance ties are provided.

Distance between monuments:
178.2' (270 links)

① S.E. Corner, Section 24
N.E. Corner, Section 25
T 20 N, R 1 E



Kenneth E. Hedge
Kenneth E. Hedge, County Surveyor

James S. Swift
James S. Swift, IN LS 20200054
May 23, 2018

Clinton Township	Marion Township
Section 24 T20N, R1E	Section 19 T20N, R2E
Section 25 T20N, R1E	Section 30 T20N, R2E

SECTION CORNER RECORD

NE 800-700

BOONE COUNTY SURVEYOR'S OFFICE

State Plane grid coordinates NAD83 (2011):

North: 1788742.34 East: 3161291.47 (U.S. survey feet)

Type of monument: 5/8" diameter rebar with aluminum cap stamped 'Boone County Surveyor'

Depth: Fourteen inches below surrounding ground

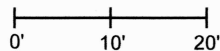
Indiana tie card references:

IN02_T20NR2E20_72 IN02_T20NR2E19_80

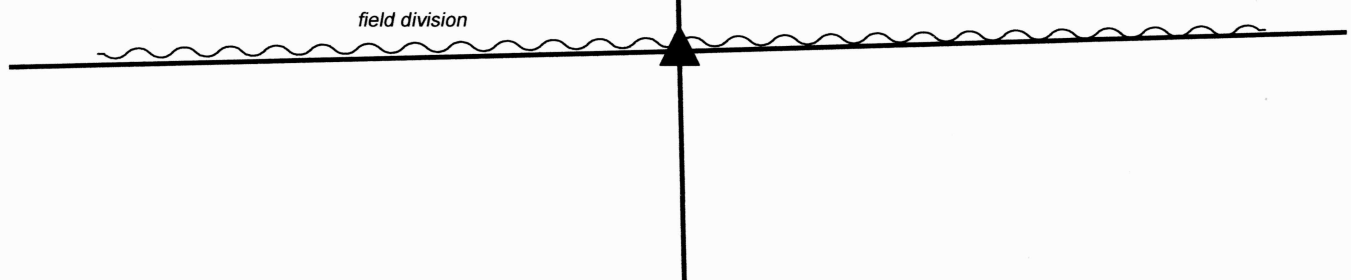
IN02_T20NR2E30_08 IN02_T18NR1W29_00

CORNER WITNESS DETAIL

SCALE 1" = 20'



This corner falls in a tilled field. No witness ties are available

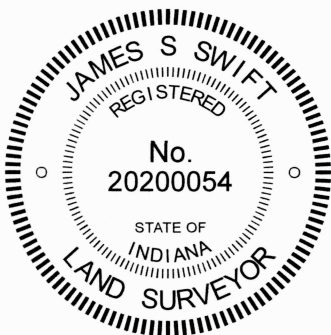


The rebar with Boone County cap was set at a calculated position.

A BCS record dated January 21 to 23, 1869 states, with respect to this corner, "Reestablished from W. Oak, green, found plain blaze and notch by chopping. Set a Rock 15.13.4 in. marked 1 on top." Neither recent BCS tie cards nor surveys recorded in the Office of the Boone County Recorder were found referencing this corner.

In the immediate vicinity of the corner, the only physical evidence is an east-west field division. However, standing fencing was found to both the east and west of the corner. The standing fence terminates approximately 440 feet west of the corner and 434 feet east of the corner. The position of the corner was computed on the westerly prolongation of a line connecting the north quarter corner of Section 29 (see BCS Corner NE 800-750) and the post found 434 feet east of the corner, at a distance equal to the distance between the north quarter corner and northeast corner of Section 29. This yielded a position which fit well, in the north-south dimension, with the standing post 440 feet west of the corner. In the east-west dimension, this solution yielded a best-fit solution with other proximate corners.

Manual excavation and probing in the vicinity of the corner revealed no further evidence. Clearly, the fencing in this area has been completely removed, as no scraps of fence were found embedded in the ground. As the immediate vicinity of the corner may be subject to plowing, being in an east-west field division, with nothing to prevent agricultural equipment destroying a surface monument, the corner was monumented with a 24-inch length of 5/8-inch rebar with Boone County Surveyor Cap set at 14 inches below grade. The monument was set on February 2, 2024



Carol Cunningham
Carol Cunningham, County Surveyor

James S. Swift
James S. Swift, IN LS 20200054

February 14, 2024

Marion Township

Section 19 T20N, R2E	Section 20 T20N, R2E
Section 30 T20N, R2E	Section 29 T20N, R2E

SECTION CORNER RECORD

BOONE COUNTY SURVEYOR'S OFFICE

NE 800-650

State Plane grid coordinates NAD83 (2011):

North: 1788680.92 East: 3158651.06 (U.S. survey feet)

Type of monument: Harrison, 4" disk 'Section Corner'

Depth: Three inches above adjacent ground

Indiana tie card references:

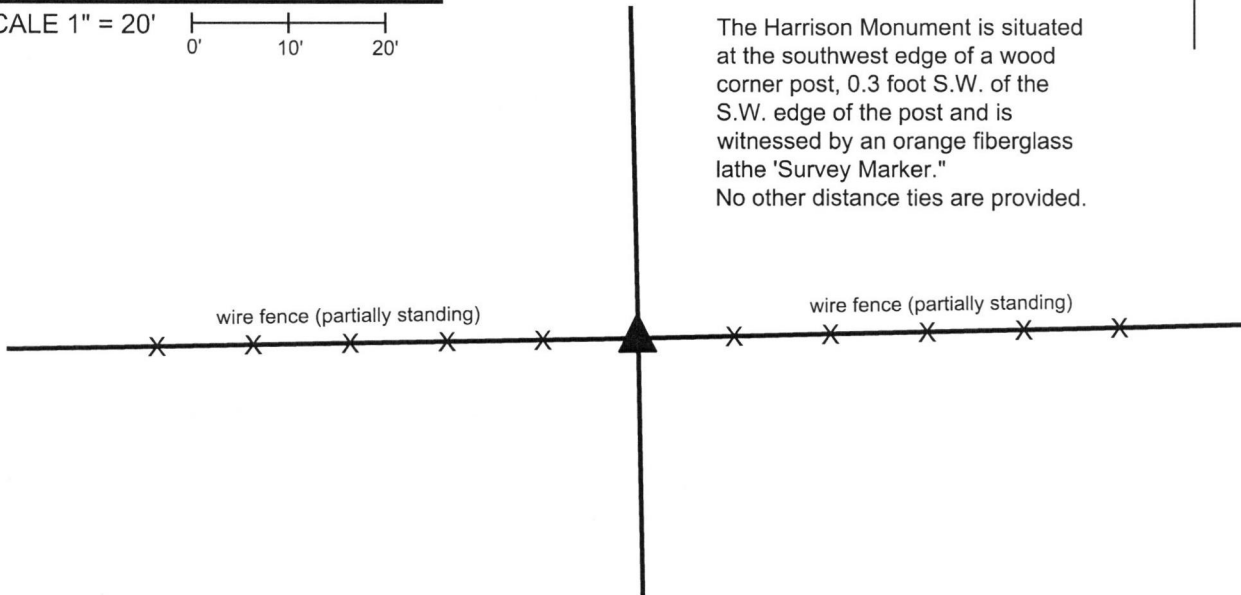
IN02_T20NR2E19_76 IN02_T20NR2E30_04



CORNER WITNESS DETAIL

SCALE 1" = 20'

The Harrison Monument is situated at the southwest edge of a wood corner post, 0.3 foot S.W. of the S.W. edge of the post and is witnessed by an orange fiberglass lathe 'Survey Marker.' No other distance ties are provided.

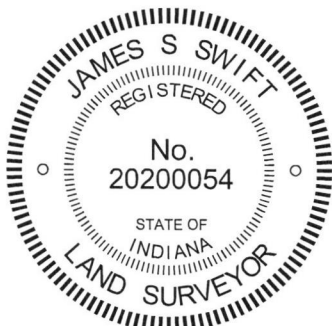


The Harrison Monument was set in place of a stone found.

A BCS record of December 20, 1870 states, with respect to this corner, "Reestablished from SE B.T. Set a Rock 11.7 by 5 1/2." No recent BCS tie cards were found referencing this corner. A reference sheet provided by the Indiana Department of Transportation dated June 13, 2005 shows the corner as a wood corner post.

Excavation was performed at this corner on April 13, 2018. Prior to excavation, a wood post was found with partially standing fencing to the east and west and fencing cut-off toward the north. The post is in line with a series of posts and scraps of fence to the north found along the east edge of a farm lane south of County Road 850 North. Excavation around the post revealed the stone described in the 1870 record at 3 inches deep adjacent to the southwest edge of the post. The stone was vertical with a clearly etched "+" mark on the top. The stone was removed, measured and found to exactly match the record dimensions, being 11 inches tall by 7 inches N-S by 5 1/2 inches E-W. The stone appeared to be undisturbed as found and was accepted as marking the corner. A Harrison monument was set in the same horizontal position as the "+" mark on the top of the stone, as originally found.

This corner was originally established as a wood post in 1821.



Kenneth E. Hedge, County Surveyor

James S. Swift, IN LS 20200054
April 18, 2018

Marion Township

Section 19
T20N, R2E

Section 30
T20N, R2E