

SECTION CORNER RECORD

NW 700-1000

BOONE COUNTY SURVEYOR'S OFFICE

State Plane grid coordinates NAD83 (2011):

North: 1782740.08 East: 3071902.64 (U.S. survey feet)

Type of monument: Harrison, 4" disk 'Section Corner'

Depth: Six inches below adjacent gravel road surface

Indiana tie card references:

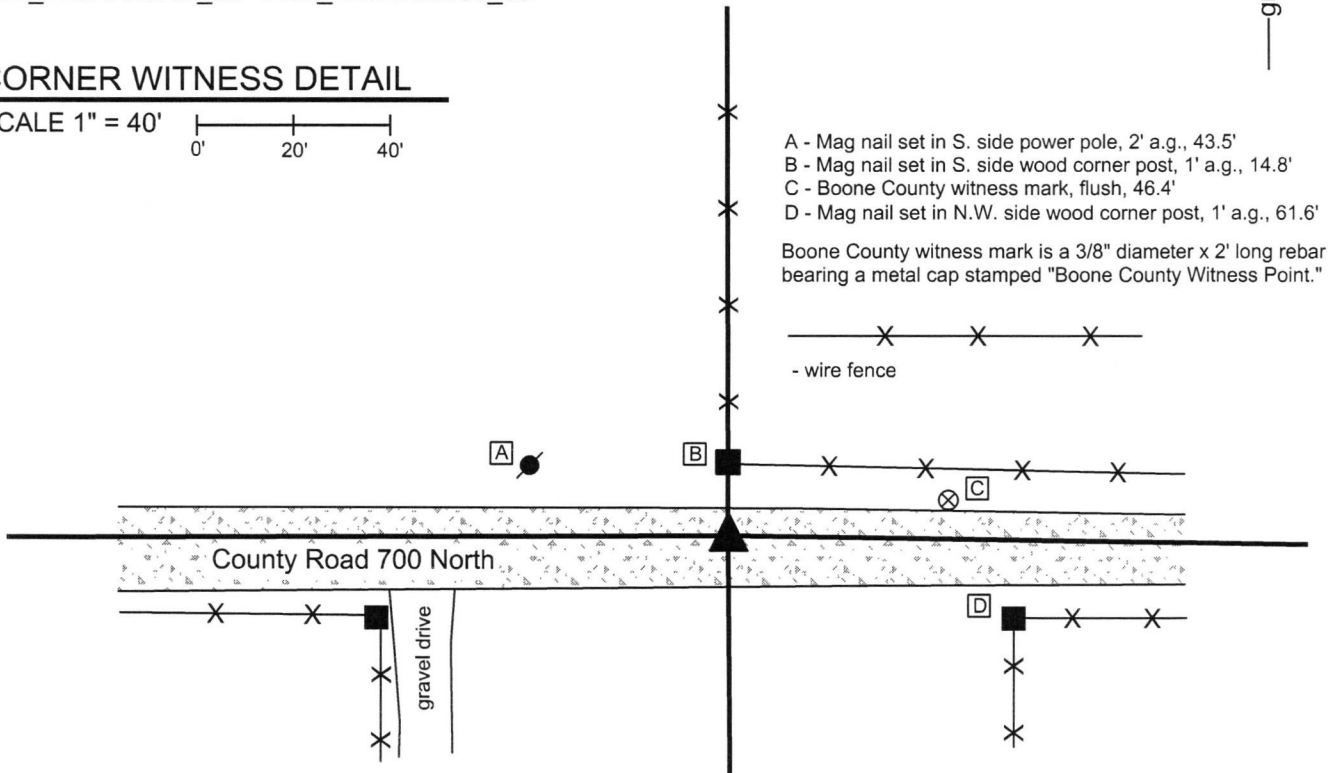
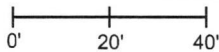
IN02_T20NR2W29_80 IN02_T20NR2W28_72

IN02_T20NR2W32_08 IN02_T20NR2W33_00



CORNER WITNESS DETAIL

SCALE 1" = 40'



- A - Mag nail set in S. side power pole, 2' a.g., 43.5'
- B - Mag nail set in S. side wood corner post, 1' a.g., 14.8'
- C - Boone County witness mark, flush, 46.4'
- D - Mag nail set in N.W. side wood corner post, 1' a.g., 61.6'

Boone County witness mark is a 3/8" diameter x 2' long rebar bearing a metal cap stamped "Boone County Witness Point."

- wire fence

The Harrison monument was set in place of a stone found.

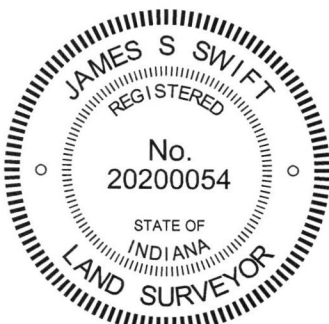
A BCS record dated March 16, 1863 states, with respect to this corner, "Reestablished. Both trees just cut down. Set a Rock 24,12,8 mark across the top. 1 notch on S. corner of Rock, 4 on E corner, 5 on N, and 2 on the West."

No recent tie cards were found referencing this corner.

Excavation was performed at this corner on June 21, 2016. No metal monuments were found prior to excavation. Excavation was centered on a point one rod south of the well established wood corner post at the north edge of the road, being the corner for fences to the north and east. A stone was found at 5 inches deep in the gravel road. The stone was of red granite material and was found standing vertically with a distinct high point. The stone was oriented in the NW-SE direction with the NE and SW sides being flat and vertical. It appeared in the field that the top of the stone had been worn by road grading equipment. Hence, no marks were found on the top of the stone. However, the notches called for in the 1863 description of the monument were found in the form of distinctly visible notches carved into the edges of the rock beginning at approximately 6 inches below the top of the rock. The stone was removed, measured, and found to be 23 inches tall by 12 inches NW-SE by 8 inches wide at the base. The upper part of the rock is approximately 6 inches wide.

The stone was accepted as being the same monument called for in the 1863 records. The stone was removed and replaced with a Harrison monument in the same position.

This corner was originally established as a wood post in 1829.



Kenneth E. Hedge
Kenneth E. Hedge, County Surveyor

James S. Swift
James S. Swift, IN LS 20200054
March 23, 2017

Sugar Creek TWP

Section 29 T20N, R2W	Section 28 T20N, R2W
Section 32 T20N, R2W	Section 33 T20N, R2W

PHOTOGRAPHIC DOCUMENTATION

Date of photography: 7/5/2016

View from above and west, showing the west side of the stone and the notches on the NW and SW edges of the stone.



View of the stone from above and south.



View of the stone and the post on the north side of County Road 700 North.



View looking across the stone and east along County Road 700 North



For details and documentation, refer to related sheet "Section Corner Record."

SECTION CORNER RECORD

BOONE COUNTY SURVEYOR'S OFFICE

NW 700-1050

State Plane grid coordinates NAD83 (2011):

North: 1782730.51 East: 3069236.52 (U.S. survey feet)

Type of monument: Harrison, 4" disk 'Section Corner'

Depth: Six inches below adjacent gravel road surface

Indiana tie card references:

IN02_T20NR2W29_76

IN02_T20NR2W32_04

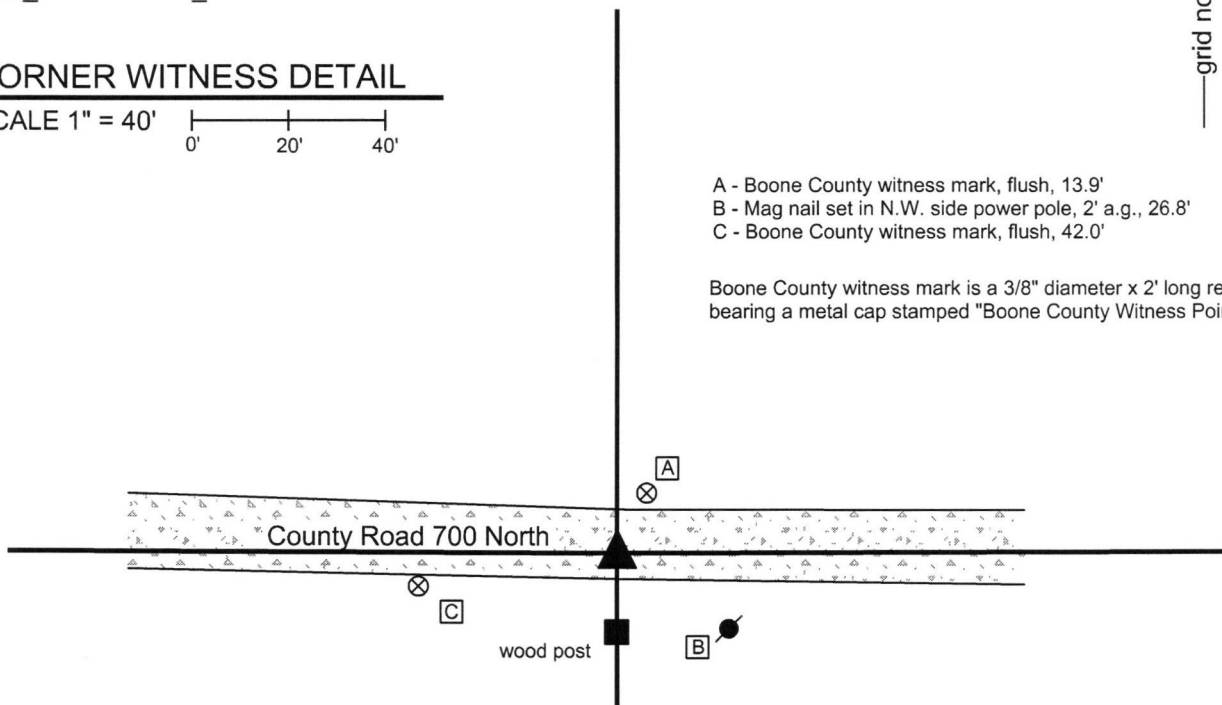


CORNER WITNESS DETAIL

SCALE 1" = 40'

- A - Boone County witness mark, flush, 13.9'
- B - Mag nail set in N.W. side power pole, 2' a.g., 26.8'
- C - Boone County witness mark, flush, 42.0'

Boone County witness mark is a 3/8" diameter x 2' long rebar bearing a metal cap stamped "Boone County Witness Point."



The Harrison monument was set in place of a stone found.

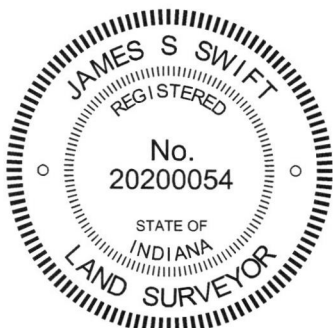
A BCS record dated June 27, 1866 states, with respect to this corner, "Reestablished from one tree." A subsequent record dated August 30, 1880 states, "Reestablished from Elm. Oak stump bears S50W 104 lks instead of S58W as per record. Set Rock 33,17,12 + on top."

A BCS tie card dated October 6, 1971 states "No Stone - Set RRR."

This corner was excavated on June 27, 2016. Prior to excavation, an iron rod was found at 3 inches below grade. Excavation revealed the stone described in the 1880 record at 4 inches deep. The maximum dimensions of the stone were found to match the dimensions described in the 1880 record. An etched "+" mark was clearly visible on the top of the stone. The stone was accepted as being the same monument set in 1880 and was held as marking the corner. The stone was removed and a Harrison monument was set in the same horizontal position of the etched mark on the top of the stone, as originally found. The iron rod, also removed during excavation, had been situated slightly east of the stone, specifically 0.3 foot south and 0.7 foot east of the mark on the stone.

The 1971 record calls for a railroad rail but none was found. Given the minimal depth of the roadbed material, it is likely that the rail was previously disturbed and removed by road grading equipment.

This corner was originally established as a wood post in 1829.



Kenneth E. Hedge
 Kenneth E. Hedge, County Surveyor

James S. Swift
 James S. Swift, IN LS 20200054
 March 23, 2017

Sugar Creek Township

Section 29
 T20N, R2W

Section 32
 T20N, R2W

PHOTOGRAPHIC DOCUMENTATION

Date of photography: June 27, 2016

The stone as originally found, showing the etched mark on the top of the stone.



The stone being lifted directly out of the ground, showing the vertical dimension of the stone.



View looking across the stone to the wood end post on the south side of C.R. 700 North.



View from the east, looking across the stone and west along C.R. 700 North



For details and documentation, refer to related sheet "Section Corner Record."

SECTION CORNER RECORD

NW 750-1000

BOONE COUNTY SURVEYOR'S OFFICE

State Plane grid coordinates NAD83 (2011):

Corner (post): North: 1785409.01 East: 3071888.65 (U.S. survey feet)

Witness (rebar): North: 1785409.01 East: 3071888.15 (U.S. survey feet)

Corner Monument: Wood Corner Post

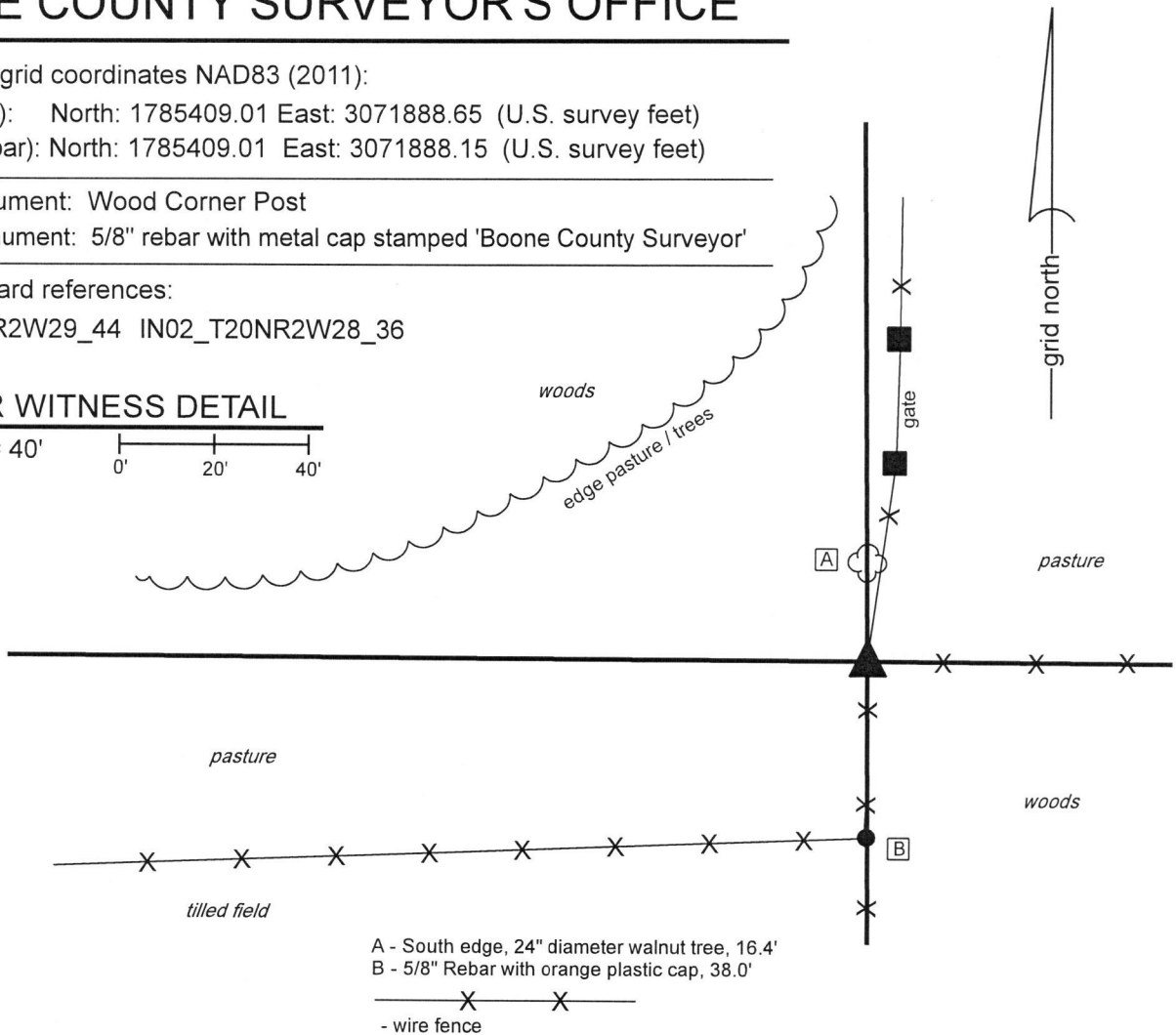
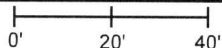
Witness Monument: 5/8" rebar with metal cap stamped 'Boone County Surveyor'

Indiana tie card references:

IN02_T20NR2W29_44 IN02_T20NR2W28_36

CORNER WITNESS DETAIL

SCALE 1" = 40'



A - South edge, 24" diameter walnut tree, 16.4'
 B - 5/8" Rebar with orange plastic cap, 38.0'

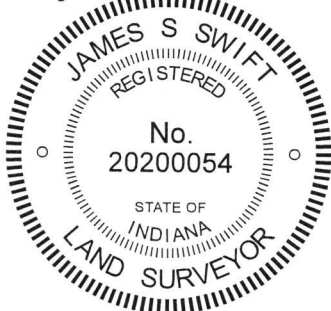
- wire fence

The post marking the corner was found in place. The 5/8 inch diameter capped rebar situated against the west edge of the post is intended to act as a witness to the corner and is not intended to mark the corner. The rebar is 0.2 foot west of the west edge of the post and 0.5 foot west of the center of the post.

No specific references to this corner were found in the BCS Surveyor's Record beyond the original establishment of the corner as a wood post in 1829. No recent BCS tie cards or recorded surveys were found referencing the corner. The description of land adjoining the corner to the west, found in Instrument 0003665 in the Office of the Boone County Recorder, calls the corner as a wood corner post 37.82 feet north of a 5/8 inch rebar bearing an orange plastic cap marked "W.J. Hudson, RLS 880019."

Excavation was performed at this corner on October 25, 2018. Prior to excavation, a wood corner post was found with standing fencing to the east, south and northeast with fencing cut-off toward the west. The post does not appear to be ancient but is clearly older than the posts for the fencing to the south and northeast. The rebar called for in the aforementioned land description was found 38 feet south of the center of the post. The rebar was slightly disturbed with an orange plastic cap (markings illegible), very close to the record distance south of the post. A stone found sitting on top of the ground, barely embedded, at the north edge of the post did not bear the characteristics of a stone purposely set to mark the corner. A small rock was found below grade at the northwest edge of the post, but appeared to be acting as a brace to the post rather than a purposely set corner stone. No other stones were found around the post.

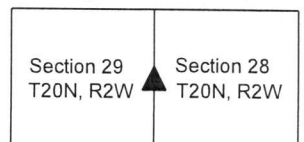
The position of the post fits well with the relative positions of proximate corners and fits well with the deed call for the rebar to the south. With no stones found which appear to be purposely set corner stones, the post was accepted as providing the best available evidence of the corner and was held as marking the corner.



Kenneth E. Hedge
 Kenneth E. Hedge, County Surveyor

James S. Swift
 James S. Swift, IN LS 20200054
 December 12, 2018

Sugar Creek Twp



SECTION CORNER RECORD

NW 750-1100

BOONE COUNTY SURVEYOR'S OFFICE

State Plane grid coordinates NAD83 (2011):

North: 1785463.74 East: 3066546.28 (U.S. survey feet)

Type of monument: Harrison, 4" disk 'Section Corner'

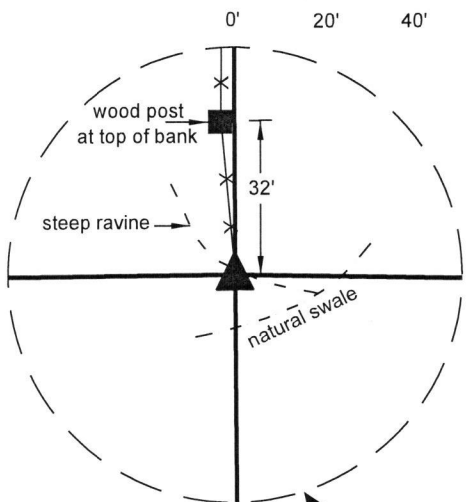
Depth: Six inches above adjacent ground

Indiana tie card references:

IN02_T20NR2W30_44 IN02_T20NR2W29_36

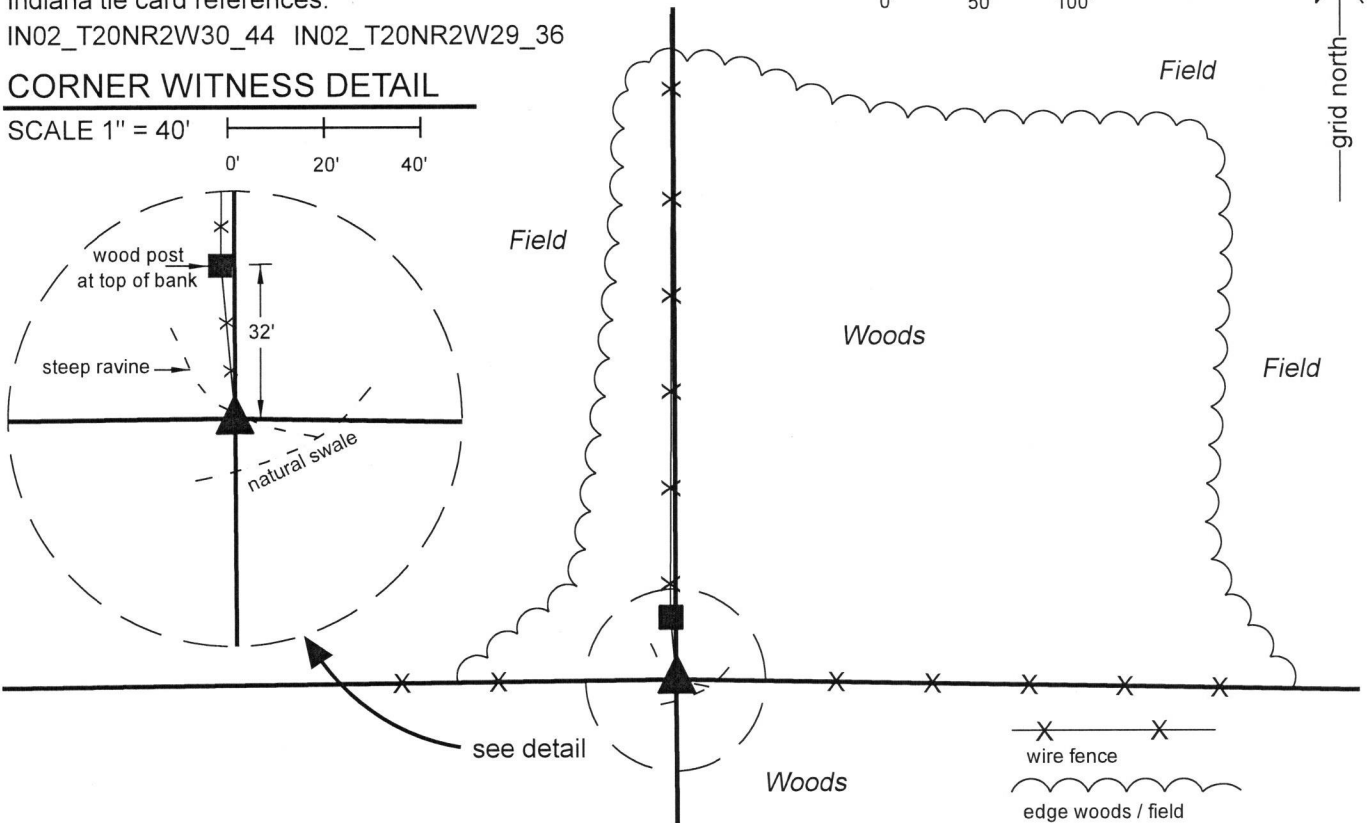
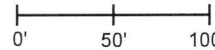
CORNER WITNESS DETAIL

SCALE 1" = 40'



CORNER OVERVIEW

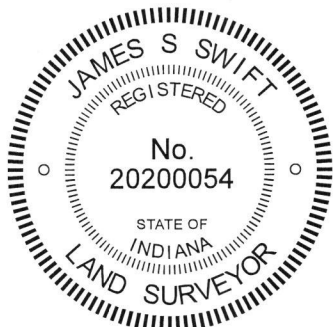
SCALE 1" = 100'



The Harrison monument was set in place of a wood corner post found.

No specific descriptions of this corner were found in the BCS Surveyor's Record beyond the original establishment of the corner as a wood post in 1829. No recent BCS tie cards or recorded surveys were found referencing the corner.

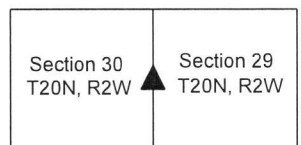
This corner was excavated on December 19, 2018. Prior to excavation, an ancient wood corner post was found with evidence of fencing to the north, south, east, and west. The corner falls along the edge of a steep ravine to the northwest at approximately the point where the ravine opens into a wider swale slightly south of the corner. The surrounding area is forested and the fences are not maintained in the immediate vicinity of the corner. Hence, the fences are visible but generally on the ground. Clearly, however, the found post represents the corner of the fences in the four cardinal directions and notches for former braces were visible on the south and east sides of the post. Excavation around the post revealed a large rock found at one foot deep, adjacent to the east edge of the post. The rock appears to serve the purpose of bracing the post. It is noted that the rock is situated on the downhill side of the post, in line with one of the brace notches. The stone does not match the characteristics of a stone purposely set to mark the corner and considered to be a brace rock, rather than corner stone. The post is in-line with standing fencing found to the west and east of the corner and fits well with evidence found indicating the positions of the corners 1/2 and 1/4 mile east, respectively. It is noted that the standing fence north of the corner, beginning at the top of the bank, approximately 32 feet north of the corner, is generally approximately 2.5 feet west of the line connecting the subject corner and the corner 1/2 mile north (see BCS Corner NW 800-1100). Hence, an uncertainty of 2.5 feet east-west may be attributed to the position of the corner. Nonetheless, the ancient post clearly represents the intersection point of the old fences in all four directions. The post was held as marking the corner. The post was removed and replaced with a Harrison monument in the same position on December 19, 2018.



Kenneth E. Hedge
 Kenneth E. Hedge, County Surveyor

James S. Swift
 James S. Swift, IN LS 20200054
 January 23, 2019

Sugar Creek Township



SECTION CORNER RECORD

NW 800-1000

BOONE COUNTY SURVEYOR'S OFFICE

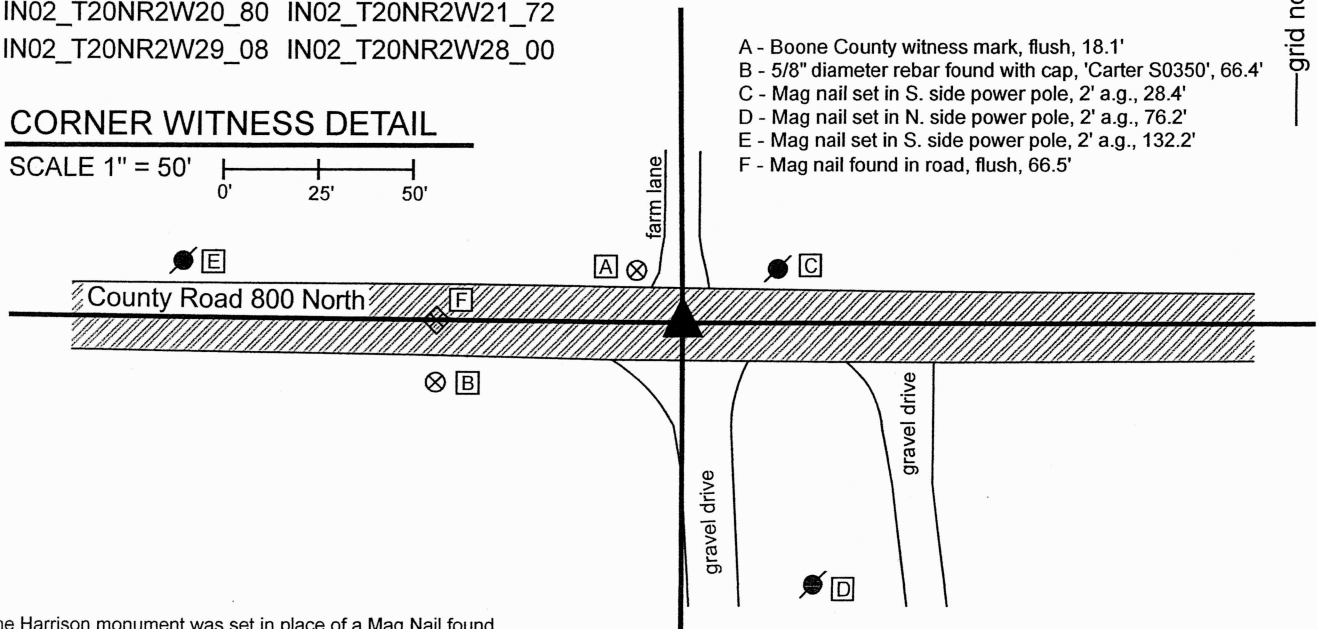
State Plane grid coordinates NAD83 (2011):
 North: 1788072.85 East: 3071886.97 (U.S. survey feet)

Type of monument: Harrison, 4" disk 'Section Corner'
 Depth: One inch below adjacent road surface

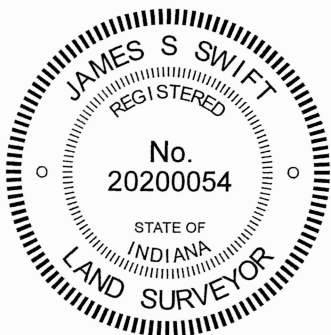
Indiana tie card references:
 IN02_T20NR2W20_80 IN02_T20NR2W21_72
 IN02_T20NR2W29_08 IN02_T20NR2W28_00

CORNER WITNESS DETAIL

SCALE 1" = 50'



The Harrison monument was set in place of a Mag Nail found.
 A BCS Record of February 21-22, 1878, states, with respect to this corner, "Reestablished at intersection of lines. Set Rock 14,11,10." No recent BCS tie cards were found referencing this corner, nor were any surveys recorded in the Office of the Boone County Recorder found referencing the corner. A deed description found in Instrument 2022004724 calls for a Harrison monument at the corner, but no Harrison monument existed at this corner prior to November 10, 2023. A deed description found in Instrument 200800007583 does not call for the corner, but does call for the corners to the west (See BCS Corner NW 800-1050, and calls for an existing fence along the east line of the west half of northwest quarter of Section 27. No survey was found which is the basis of this description, but based on the manner of description and monuments found marking the corners, it is believed that this description was created by the late Jerry L. Carter, LS No. S0350. It is also believed most likely that the found Mag nail was set by Carter as part of his survey, or perhaps it was found by Carter and held, as the nail fits precisely with the geometry of the description. Mr. Carter's surveys are not currently available.
 Excavation was performed at this corner on November 10, 2023. Prior to excavation, the mag nail believed to have been set or held by Jerry Carter was found. The position of this nail fit precisely with evidence of the east line of the west half of the northwest quarter of Section 27 and fit reasonably well with the calls in the deed found in Instrument 2022004724. The nail also works reasonably well, in the E-W dimension with the corner to the east (see BCS Corner NW 800-950) with respect to original federal distances. However, the distance between the nail and the corner to the west (BCS Corner NW 800-1050) is approximately 60 feet longer than the distance to the east. Also, the position of the nail does not work well with distance reported in the 1878 BCS Record, though those distances are at significant variance with the original federal notes. This appears to be the result of the fact that more land exists, E-W, in this area, than is called for in the original federal notes. Whether this is due to a scrivener's error or perhaps an extra chain measured but not reported in the original federal survey, is not known. If the corner were established at approximately half-way between the corners to the east and west, the position would agree better with the 1878 distances. However, no evidence was found to support excavating that far west, which would be as much as 30 feet west of the found nail.
 Excavation of a 5-foot by 5-foot square centered on the nail did not reveal further evidence of the corner. Excavation was performed to at least 20 inches deep, several inches below the bottom of the road bed. The stone called-for in the 1878 BCS record was not found. As noted above, this stone may be up to 30 feet west of this position. Practical realities of excavating in public roadways do not support excavation to that extent and holding the corner that far west would not work with the available evidence. The preponderance of available evidence, particularly the north-south fence 1/4 mile east and the existing deed calls noted above, supports the nail as a reasonable position for the corner. The nail was held as marking the corner and a Harrison monument was set in place of the nail on November 10, 2023.



Carol Cunningham
 Carol Cunningham, County Surveyor

James S. Swift
 James S. Swift, IN LS 20200054
 November 14, 2023

Sugar Creek Township

Section 20 T20N, R2W	Section 21 T20N, R2W
Section 29 T20N, R2W	Section 28 T20N, R2W

SECTION CORNER RECORD

BOONE COUNTY SURVEYOR'S OFFICE

NW 800-1050

State Plane grid coordinates NAD83 (2011):
 North: 1788101.85 East: 3069191.76 (U.S. survey feet)

Type of monument: Harrison, 4" disk 'Section Corner'
 Depth: One inch below adjacent road surface

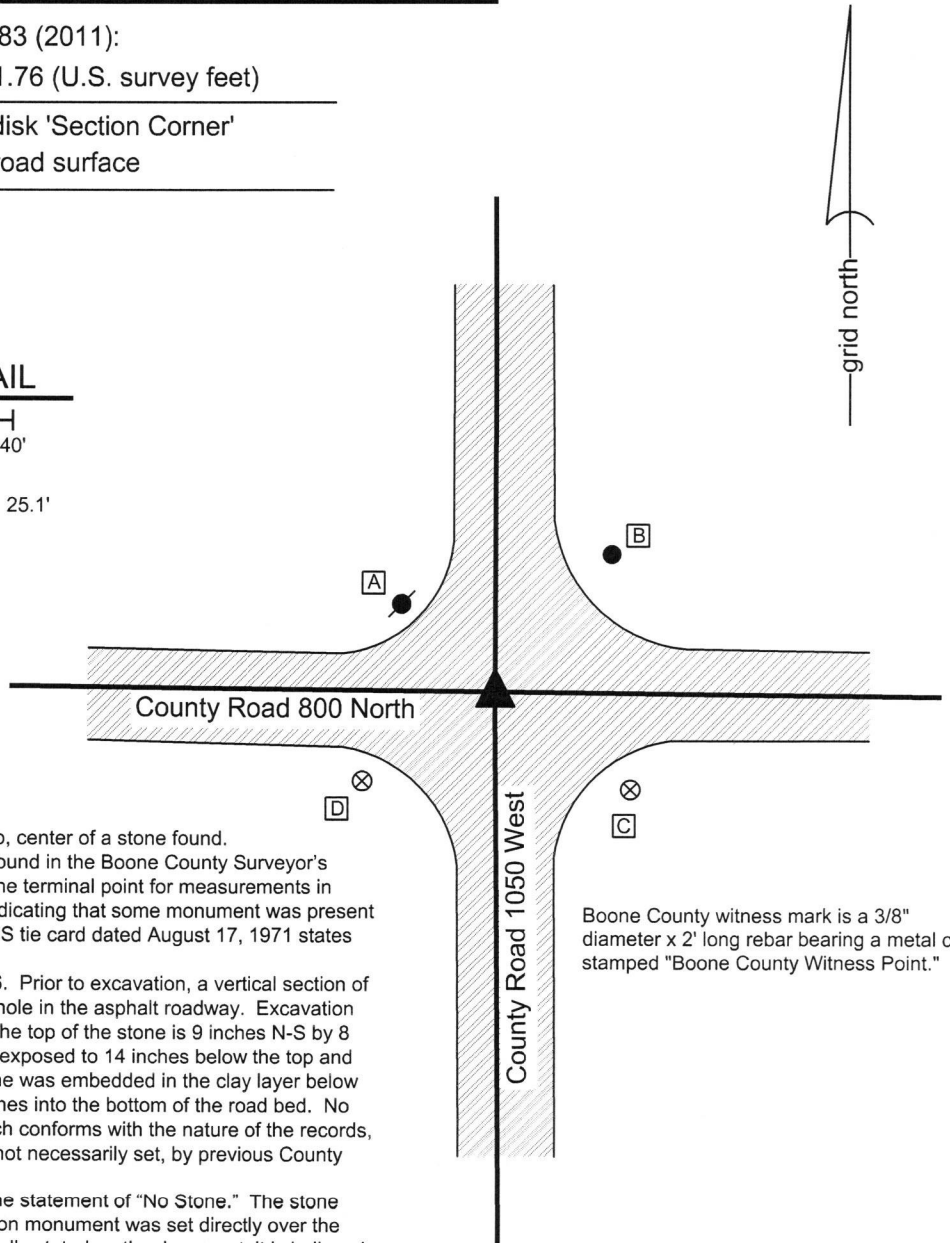
Indiana tie card references:

IN02_T20NR2W20_76
 IN02_T20NR2W29_04

CORNER WITNESS DETAIL

SCALE 1" = 40'

- A - Mag nail set in S. side power pole, 2' a.g., 25.1'
- B - 5/8 inch rebar found, flush, 37.7'
- C - Boone County Witness Mark, flush, 34.7'
- D - Boone County Witness Mark, flush, 33.1'

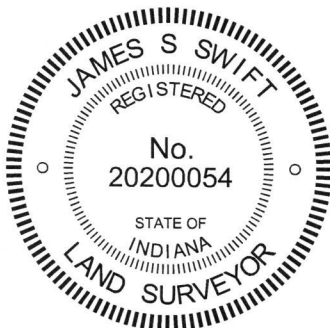


The Harrison monument was set over the top, center of a stone found. No specific descriptions of this corner were found in the Boone County Surveyor's Record, though the corner is referenced as the terminal point for measurements in entries dated 1834, 1839, 1867 and 1878, indicating that some monument was present from which to measure at those times. A BCS tie card dated August 17, 1971 states "No Stone - RRR put in."

This corner was excavated on June 27, 2016. Prior to excavation, a vertical section of railroad rail was found at 7 inches deep in a hole in the asphalt roadway. Excavation revealed a stone found at 17 inches deep. The top of the stone is 9 inches N-S by 8 inches E-W. The east side of the stone was exposed to 14 inches below the top and the stone appeared to be yet taller. The stone was embedded in the clay layer below the road bed, protruding approximately 5 inches into the bottom of the road bed. No specific marks were found on the stone, which conforms with the nature of the records, indicating that the stone was likely held, but not necessarily set, by previous County Surveyors.

The 1971 tie card was clearly erroneous in the statement of "No Stone." The stone was held as marking the corner and a Harrison monument was set directly over the top, center of the stone. Though not specifically stated on the document, it is believed that the railroad rail was set in association with the creation of the 1971 tie card. The rail, removed during excavation, had been 1.4 feet east and 0.6 foot south of the stone. This corner was originally established as a wood post in 1829.

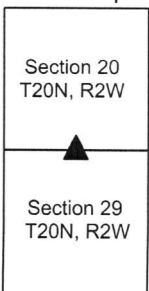
Boone County witness mark is a 3/8" diameter x 2' long rebar bearing a metal cap stamped "Boone County Witness Point."



Kenneth E. Hedge
 Kenneth E. Hedge, County Surveyor

James S. Swift
 James S. Swift, IN LS 20200054
 March 23, 2017

Sugar Creek Township



PHOTOGRAPHIC DOCUMENTATION

Date of photography: June 27, 2016

The stone as it was originally exposed.



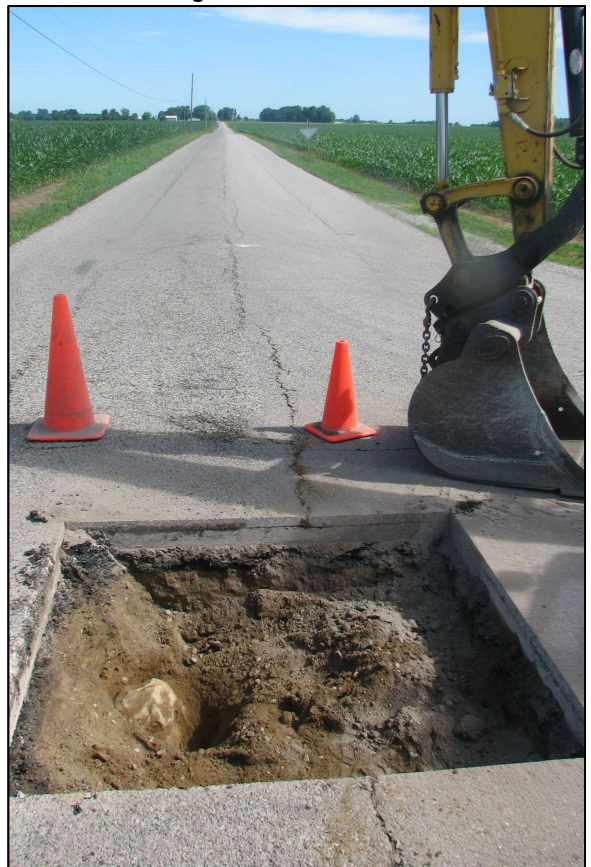
View of the stone more fully exposed, showing the vertical east side of the rock.



View from the east, looking across the stone and west along C.R. 800 North.



View from the south, looking across the stone and north along C.R. 1050 West.



For details and documentation, refer to related sheet "Section Corner Record."

SECTION CORNER RECORD

BOONE COUNTY SURVEYOR'S OFFICE

NW 800-1100

State Plane grid coordinates NAD83 (2011):
 North: 1788128.40 East: 3066534.22 (U.S. survey feet)

Type of monument: Harrison, 4" disk 'Section Corner'
 Depth: One inch below adjacent road surface

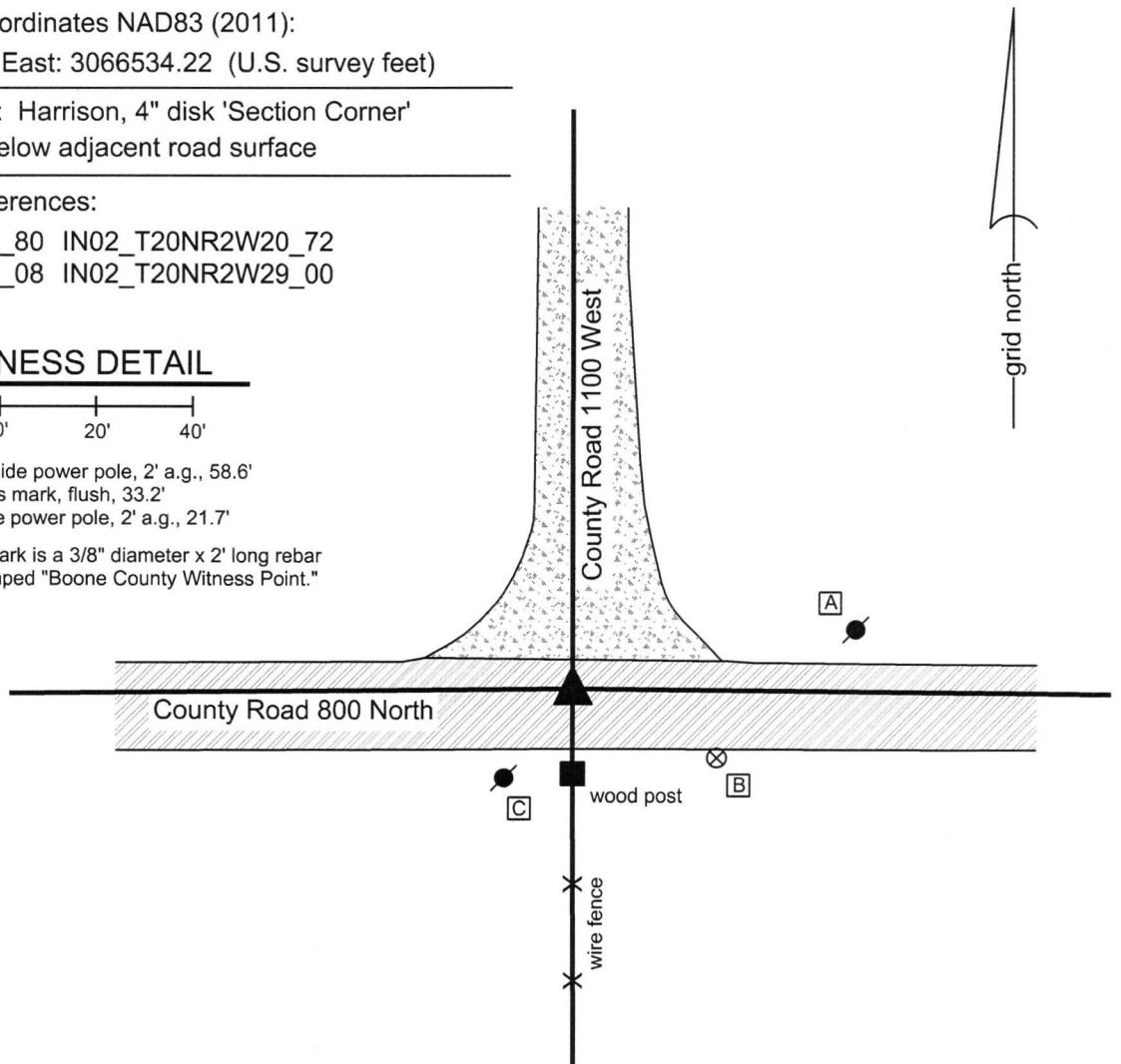
Indiana tie card references:
 IN02_T20NR2W19_80 IN02_T20NR2W20_72
 IN02_T20NR2W30_08 IN02_T20NR2W29_00

CORNER WITNESS DETAIL

SCALE 1" = 40'

- A - Mag nail set in S.W. side power pole, 2' a.g., 58.6'
- B - Boone County witness mark, flush, 33.2'
- C - Mag nail set in N. side power pole, 2' a.g., 21.7'

Boone County witness mark is a 3/8" diameter x 2' long rebar bearing a metal cap stamped "Boone County Witness Point."



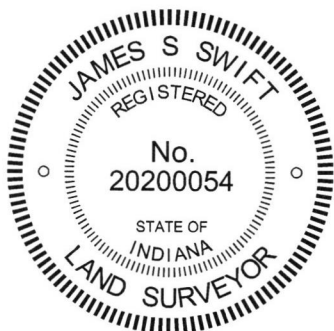
The Harrison monument was set over a stone found.

A BCS record dated October 21, 1867 states, with respect to this corner, "A Stone that was placed." A BCS tie card dated August 16, 1971 states "No Stone - RRR put in."

This corner was excavated on June 15, 2016. Prior to excavation, a Mag nail was found at 3 inches deep in a hole in the asphalt roadway.

Excavation revealed a vertical section of railroad rail found at 5 inches deep, slightly north and east of the Mag nail. Further excavation revealed a stone found at 17 inches, several feet north of the nail and rail. With the top 6 inches of the stone exposed, it measured 8.5 inches E-W by 6 inches N-S. The south side of the stone was exposed to its bottom, 10 inches below the top of the stone. The south side is vertical and flat while the north side is more sloping. The stone had a distinct ridge across the top oriented in the E-W direction. No specific marks were found on the stone. The stone was held as marking the corner and a Harrison monument was set over the center of the E-W ridge. The Mag nail and railroad rail, removed during excavation, had been 3.0 feet south and 0.5 foot west of the stone.

This corner was originally established as a wood post in 1829.



Kenneth E. Hedge
 Kenneth E. Hedge, County Surveyor

James S. Swift
 James S. Swift, IN LS 20200054
 March 23, 2017

Sugar Creek Twp

Section 19 T20N, R2W	Section 20 T20N, R2W
Section 30 T20N, R2W	Section 29 T20N, R2W

PHOTOGRAPHIC DOCUMENTATION

Date of photography: June 15, 2016

The stone as it was originally exposed, circled in red.



View showing the exposed, vertical south edge of the stone.



View from the south, looking across the stone and north along County Road 1100 West.



View from the north, looking across the stone and along the existing fence to the south.



For details and documentation, refer to related sheet "Section Corner Record."