

SECTION CORNER RECORD

NE 700-150

BOONE COUNTY SURVEYOR'S OFFICE

State Plane grid coordinates NAD83 (2011):

North: 1782642.50 East: 3132261.03 (U.S. survey feet)

Type of monument: 5/8 inch rebar with metal cap stamped 'Boone County Surveyor'

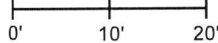
Depth: 14 inches below adjacent tilled field

Indiana tie card references:

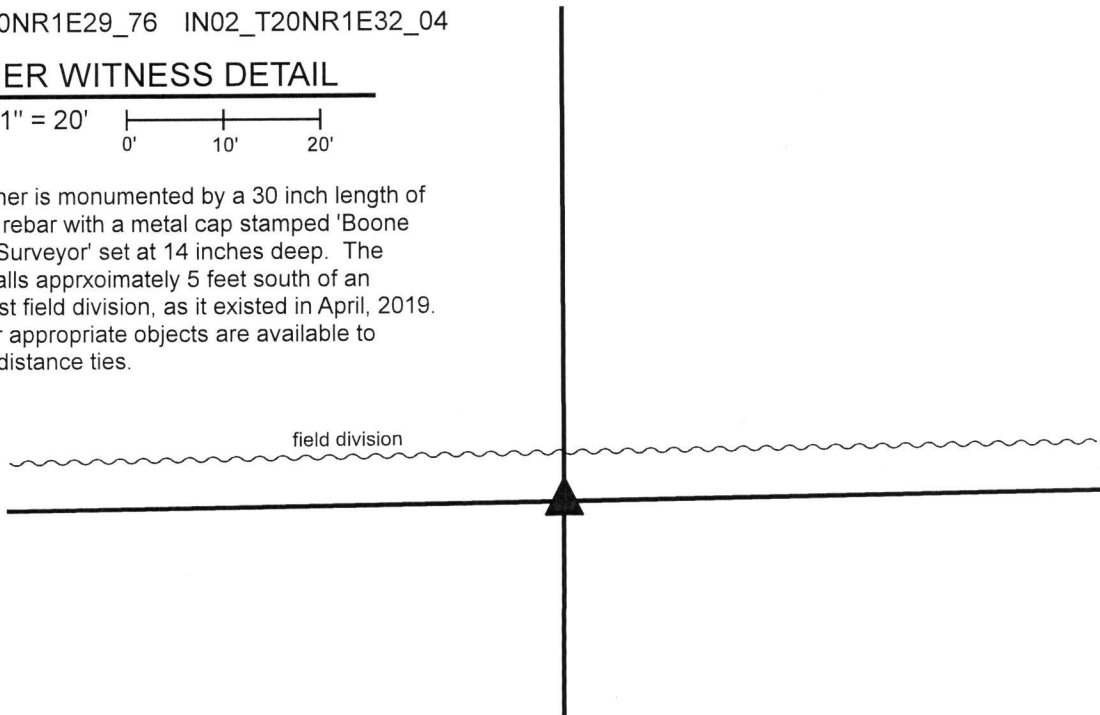
IN02_T20NR1E29_76 IN02_T20NR1E32_04

CORNER WITNESS DETAIL

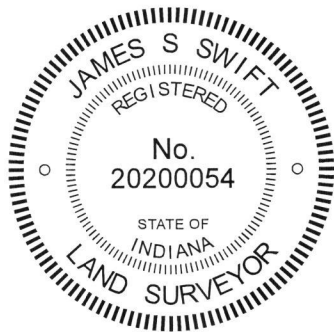
SCALE 1" = 20'



The corner is monumented by a 30 inch length of 5/8 inch rebar with a metal cap stamped 'Boone County Surveyor' set at 14 inches deep. The corner falls approximately 5 feet south of an east-west field division, as it existed in April, 2019. No other appropriate objects are available to provide distance ties.



The rebar was set in the position of a rebar which previously marked the corner and adjacent to the remnants of a wood post. No specific descriptions of this corner were found in the BCS Surveyor's Record beyond the original establishment of the corner as a wood post in 1822. No recent BCS tie cards were found referencing the corner. The corner is shown as being a 5/8 inch rebar with cap (found) a survey by Dewey L. Witte, LS #29800022, dated August 12, 2009 and recorded in Survey Book 11, page 37 in the Office of the Boone County Recorder. This corner was investigated substantially in April, 2019 and excavated on April 25, 2019. It is known that a section of east-west fence previously existed in this vicinity but the physical fence has been removed. Substantial accessory evidence remains in the form of east-west fencing which remains standing beginning at 560 feet east of the corner and continuing east for several hundred feet. Evidence of adjacent quarter-quarter section lines exists in the form of N-S fencing approximately 1/4 mile east of the corner, the physical roadway of Caldwell Road approximately 1/4 mile west of the corner and an old corner post approximately 1/4 mile south of the corner. The position of the rebar shown on the Witte survey was computed with minimal uncertainty with respect to the relative positions of other evidence shown on the survey. The computed position of the rebar fits very well with the relative positions of the aforementioned accessory evidence and with the relative positions of evidence of the northeast corner, northwest corner and center quarter corner of section 32. Excavation in the immediate vicinity of the calculated position of the rebar revealed the remnants of an old wood post found at 14 inches below the surface of the tilled field. Scraps of wire were also found in the ground to the east and west of the calculated position and post remnants. The post is mostly rotten. The computed position fell along the west edge of the remnants of the post. The computed position was held for the corner and a 30 inch length of 5/8 inch diameter rebar was set at this position, partially driven into the remnants of the post. The top of the rebar was set at 14 inches deep to avoid disruption by agricultural equipment. The existing east-west field division, as it existed at the time of excavation, is approximately 5 feet north of the corner.



Kenneth E. Hedge
Kenneth E. Hedge, County Surveyor

James S. Swift
James S. Swift, IN LS 20200054
May 22, 2019

Clinton Township

Section 29
T20N, R1E

Section 32
T20N, R1E

SECTION CORNER RECORD

BOONE COUNTY SURVEYOR'S OFFICE

NE 700-200

State Plane grid coordinates NAD83 (CORS96):

North: 1782688.13 East: 3134877.00 (U.S. survey feet)

Type of monument: Harrison, 4" disk 'Section Corner'

Depth: One inch below adjacent road surface

Indiana tie card references:

IN02_T20NR1E29_80 IN02_T20NR1E28_72

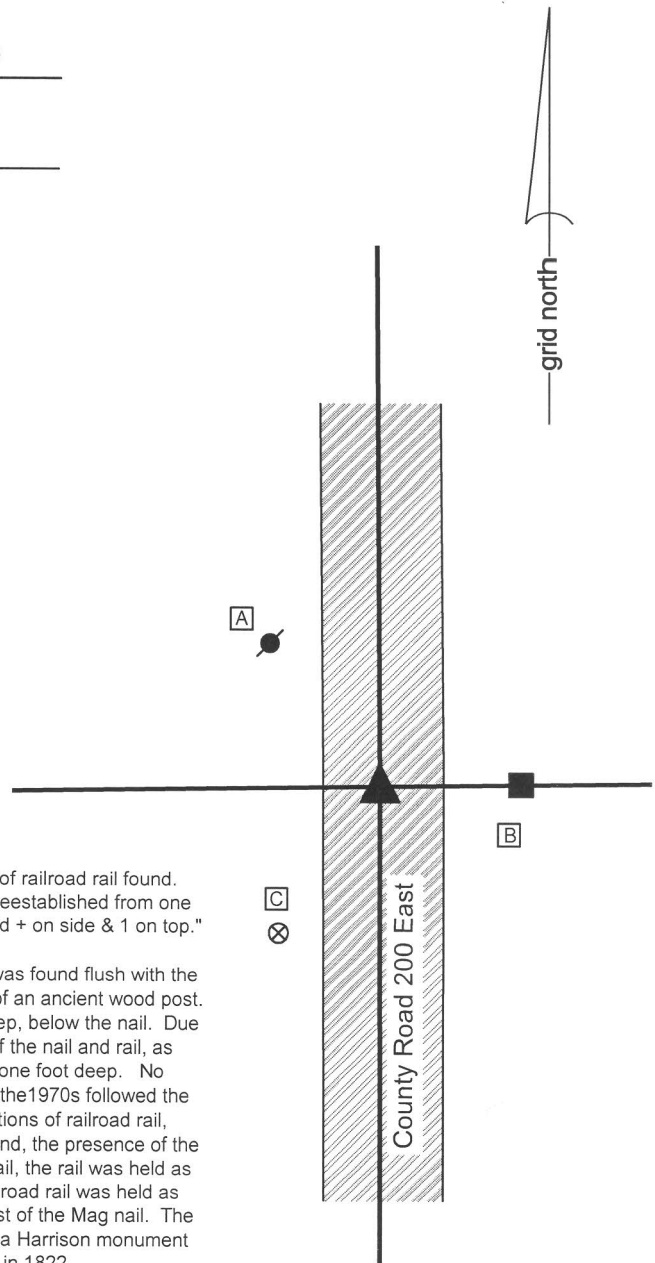
IN02_T20NR1E32_08 IN02_T20NR1E33_00

CORNER WITNESS DETAIL

SCALE 1" = 30'

- A - Mag nail set in S.E. side power pole, 2' a.g., 27.1'
- B - Mag nail set in W. side power pole, 1' a.g., 19.7'
- C - Boone County witness mark, flush, 28.0'

Boone County witness mark is a 3/8" diameter x 2' long rebar bearing a metal cap stamped "Boone County Witness Point."



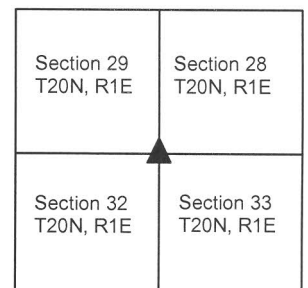
The Harrison monument was set in place of a Mag nail and a vertical section of railroad rail found. A BCS record dated June 22&23, 1866 states, with respect to this corner, " Reestablished from one tree. Set two Rocks. One 8.6.6 in marked +. Top Rock 16.8.8 inches marked + on side & 1 on top." A BCS tie card dated August, 1970 states "Found small stones - set rail." This corner was excavated on June 3, 2014. Prior to excavation a Mag nail was found flush with the surface of the road, in the approximate center of the road, immediately west of an ancient wood post. Excavation revealed a vertical section of railroad rail found at eight inches deep, below the nail. Due to the presence of a 600 pair phone line crossing the road in one foot south of the nail and rail, as marked by IUPPS, only an area being one foot by one foot was excavated to one foot deep. No further evidence of the corner was found. It is known that BCS field crews of the 1970s followed the practice of removing stones, when found and replacing them with vertical sections of railroad rail, unless otherwise noted. Given this known practice, the call for the stones found, the presence of the rail and the lack of any other evidence found in the immediate vicinity of the rail, the rail was held as providing the best available evidence of the corner. The top, center of the railroad rail was held as the position of the corner, being approximately 0.2 foot north and 0.2 foot east of the Mag nail. The railroad rail was left in place, the top of the rail was anchored in concrete and a Harrison monument was set above the rail. This corner was originally established as a wood post in 1822.



Kenneth E. Hedge
 Kenneth E. Hedge, County Surveyor

James S. Swift
 James S. Swift, IN LS 20200054
 March 27, 2015

Clinton Township



SECTION CORNER RECORD

NE 750-100

BOONE COUNTY SURVEYOR'S OFFICE

State Plane grid coordinates NAD83 (CORS96):

North: 1785238.54 East: 3129656.75 (U.S. survey feet)

Type of monument: Harrison, 4" disk 'Section Corner'

Depth: One inch below adjacent road surface

Indiana tie card references:

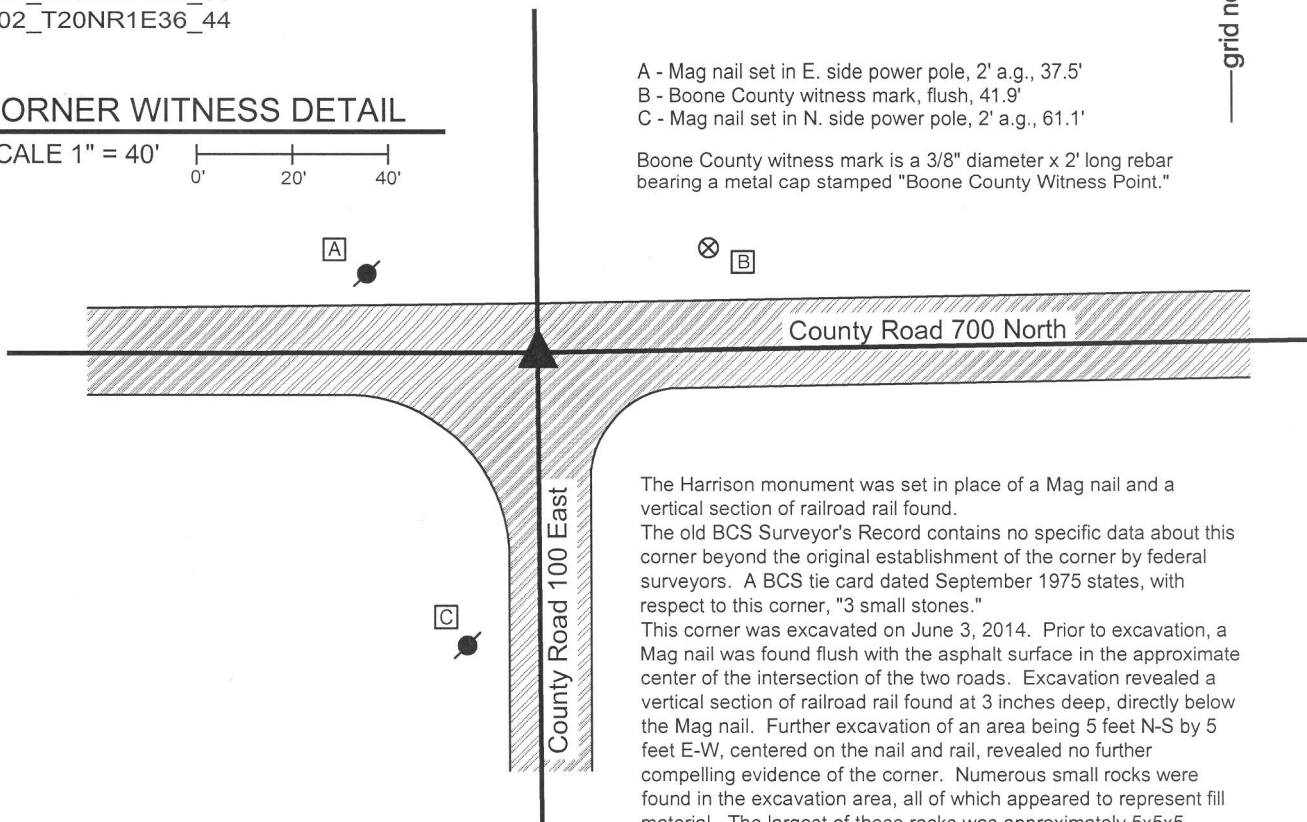
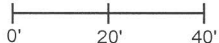
IN02_T20NR1E29_36

IN02_T20NR1E36_44



CORNER WITNESS DETAIL

SCALE 1" = 40'



- A - Mag nail set in E. side power pole, 2' a.g., 37.5'
- B - Boone County witness mark, flush, 41.9'
- C - Mag nail set in N. side power pole, 2' a.g., 61.1'

Boone County witness mark is a 3/8" diameter x 2' long rebar bearing a metal cap stamped "Boone County Witness Point."

The Harrison monument was set in place of a Mag nail and a vertical section of railroad rail found.

The old BCS Surveyor's Record contains no specific data about this corner beyond the original establishment of the corner by federal surveyors. A BCS tie card dated September 1975 states, with respect to this corner, "3 small stones."

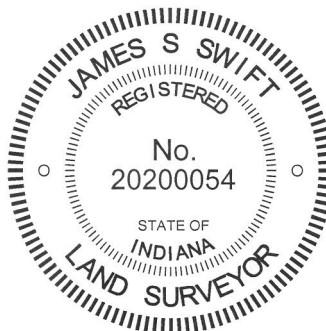
This corner was excavated on June 3, 2014. Prior to excavation, a Mag nail was found flush with the asphalt surface in the approximate center of the intersection of the two roads. Excavation revealed a vertical section of railroad rail found at 3 inches deep, directly below the Mag nail. Further excavation of an area being 5 feet N-S by 5 feet E-W, centered on the nail and rail, revealed no further compelling evidence of the corner. Numerous small rocks were found in the excavation area, all of which appeared to represent fill material. The largest of these rocks was approximately 5x5x5 inches and did not appear to represent evidence of the corner. Excavation was performed to 24 inches deep, several inches into the clay layer below the road.

It is not known whether the "small stones" found in 1970 represented better evidence of the corner than the small stones found in 2014. It is believed that any stones which may have been found in 1970 would have been removed and replaced with the rail, as was a common practice of BCS field crews from that era. Given the lack of contrary evidence and previous acceptance of the railroad rail, the rail was accepted as the best available evidence of the corner. The rail and nail were both removed during excavation and replaced with a Harrison monument set in the same position.

This corner was originally established as a wood post in 1822.

Kenneth E. Hedge, County Surveyor

James S. Swift, IN LS 20200054
March 27, 2015



Clinton Township

Section 30 T20N, R1E	Section 29 T20N, R1E
-------------------------	-------------------------

SECTION CORNER RECORD

BOONE COUNTY SURVEYOR'S OFFICE

NE 750-200

State Plane grid coordinates NAD83 (CORS96):

North: 1785324.37 East: 3134860.50 (U.S. survey feet)

Type of monument: Harrison, 4" disk 'Section Corner'

Depth: One inch below adjacent road surface

Indiana tie card references:

IN02_T20NR1E28_36

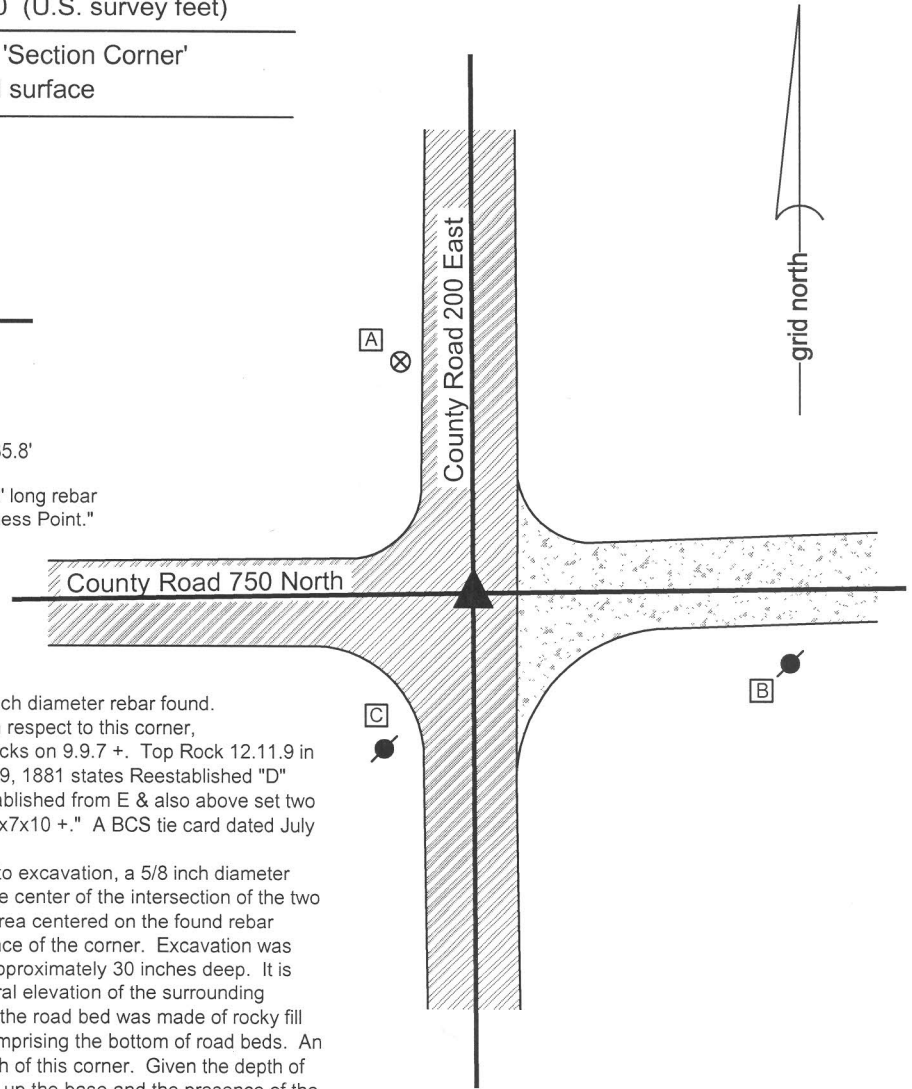
IN02_T20NR1E29_44

CORNER WITNESS DETAIL

SCALE 1" = 40'

- A - Boone County witness mark, flush, 50.3'
- B - Mag nail set in N.W. side, power pole, 66.4'
- C - Mag nail set in N.E. side power pole, 2' a.g., 35.8'

Boone County witness mark is a 3/8" diameter x 2' long rebar bearing a metal cap stamped "Boone County Witness Point."



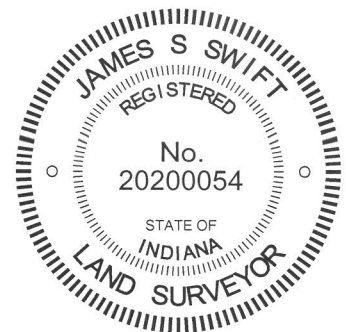
The Harrison monument was set in place of a 5/8 inch diameter rebar found. A BCS record dated March 21-22, 1867 states, with respect to this corner, "Reestablished from stump of one tree. Set two Rocks on 9.9.7 +. Top Rock 12.11.9 in Marked + on top." A BCS record dated September 9, 1881 states Reestablished "D" (above). Made good search and didn't find. Reestablished from E & also above set two rocks. Lower one 10x10x10 no mark. Upper one 8x7x10 +." A BCS tie card dated July 9, 1975 states "No stone found - set rod."

This corner was excavated on June 2, 2014. Prior to excavation, a 5/8 inch diameter rebar was found at 8 inches deep in the approximate center of the intersection of the two roads. Excavation of an 5 foot N-S by 5 foot E-W area centered on the found rebar yielded no further monumentation or specific evidence of the corner. Excavation was performed to the clay layer below the road bed at approximately 30 inches deep. It is noted that this depth is significantly below the general elevation of the surrounding ground. It is also noted that the bottom 8 inches of the road bed was made of rocky fill material, rather than the sandy material typically comprising the bottom of road beds. An open ditch crosses the road immediately to the north of this corner. Given the depth of the base of the road bed, the material which makes up the base and the presence of the open ditch, it is evident that this specific area was probably wet and muddy once upon a time. It appears that the area was excavated at some point previously and the road bed was established deeper and with more substantial material than is typical for rural roadways. This observation may account for the fact that the stones called for in the BCS record were not found.

It is not specifically known whether the 5/8 inch rebar represents the "rod" called for in the 1975 tie card. It is noted that it is more likely that the BCS field crew which set this "rod" would have used a 1/2 inch diameter rebar rather than a 5/8 inch diameter rebar. However, the rebar fits well with local evidence in the form of being at the intersection of the centers of the two roads. No distance ties shown on the 1975 tie card remain. Given the lack of any other monumentation or evidence found, the rebar was accepted as providing the best available evidence of the corner.

The rebar was removed during excavation and was replaced with a Harrison monument set in the same position.

This corner was originally established as a wood post in 1822.



Kenneth E. Hedge
 Kenneth E. Hedge, County Surveyor

James S. Swift
 James S. Swift, IN LS 20200054
 March 27, 2015

Clinton Township	
Section 29 T20N, R1E	Section 28 T20N, R1E

SECTION CORNER RECORD

NE 800-100

BOONE COUNTY SURVEYOR'S OFFICE

State Plane grid coordinates NAD83 (2011):

North: 1787880.69 East: 3129649.47 (U.S. survey feet)

Type of monument: Harrison, 4" disk 'Section Corner'

Depth: Two inches above surrounding ground

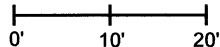
Indiana tie card references:

IN02_T20NR1E19_80 IN02_T20NR1E20_72

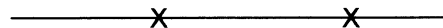
IN02_T20NR1E30_08 IN02_T20NR1E29_00

CORNER WITNESS DETAIL

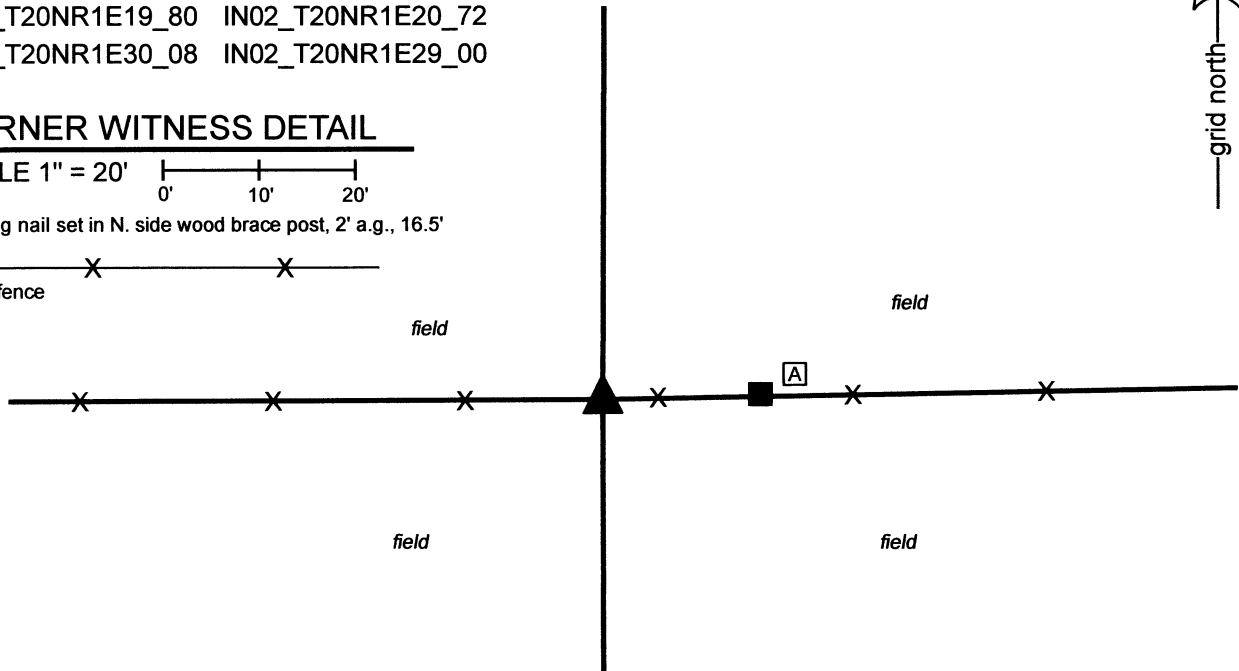
SCALE 1" = 20'



A - Mag nail set in N. side wood brace post, 2' a.g., 16.5'



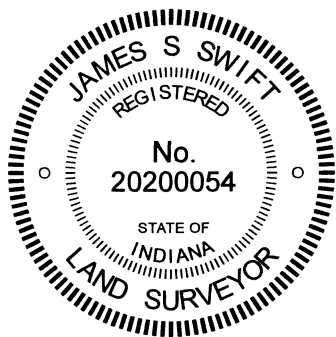
- wire fence



The Harrison monument was set 1 rod (16.5 feet) west of a wood brace post.

No specific descriptions of this corner were found in the BCS Surveyor's Record beyond the original establishment of the corner as a wood post in 1822.

No recent tie cards were found referencing this corner, nor were any references to this corner found in surveys recorded in the Office of the Boone County Recorder. Several surveys by Jerry L. Carter, LS No. S0350, were found which hold a post at the southwest corner of the east half of the southwest quarter of Section 20 (see Survey Book 12, pages 67, 69, 70, Boone County Recorder). The subject corner is referenced in the deeds for the Bowman properties to the south, southeast and southwest (see Deed Record 235, page 593 and Instrument 9904593). An overall description in Instrument 9904593 specifically calls the corner as being 590.88 feet east of the northwest corner of the Bowman property. No specific post, stone, or other monument was found marking the subject corner during reconnaissance on several occasions. However, it was observed that a standing wood brace post is precisely 16.5 feet (1 rod) plus the deed distance of 590.88 feet east of an ancient wood corner post providing the visible evidence of the northwest corner of the Bowman property. It was also observed that holding a computed position for the subject corner which is 1 rod west of the brace post, the wood post referenced on the Carter surveys as marking the southwest corner of the east half of the southwest quarter of Section 20 falls within 2 feet total (1.5 feet east-west) of the midpoint of a straight line connecting the computed position with the southeast corner of said southwest quarter of Section 20. Hence, a position 1 rod west of the brace post works precisely with the deed distance and post at the northwest corner of the Bowman property and works quite well with the post held by Carter at the sixteenth corner to the east. It is noted that brace posts have been observed to be situated at 1 rod from corner posts at numerous other corners throughout the county. Manual excavation and probing in the vicinity of the brace post and computed position on April 4th and 12th, 2023 did not reveal further evidence of the corner. The corner was established in the east-west fence line, in-line with and 16.5 feet west of the brace post to the east. A Harrison monument was set at this position on April 12, 2023.



Carol Cunningham
Carol Cunningham, County Surveyor

James S. Swift
James S. Swift, IN LS 20200054
April 26, 2023

Clinton Township

Section 19 T20N, R1E	Section 20 T20N, R1E
Section 30 T20N, R1E	Section 29 T20N, R1E

SECTION CORNER RECORD

NE 800-150

BOONE COUNTY SURVEYOR'S OFFICE

State Plane grid coordinates NAD83 (2011):

North: 1787919.85 East: 3132243.02 (U.S. survey feet)

Type of monument: Harrison, 4" disk 'Section Corner'

Depth: Three inches above adjacent ground

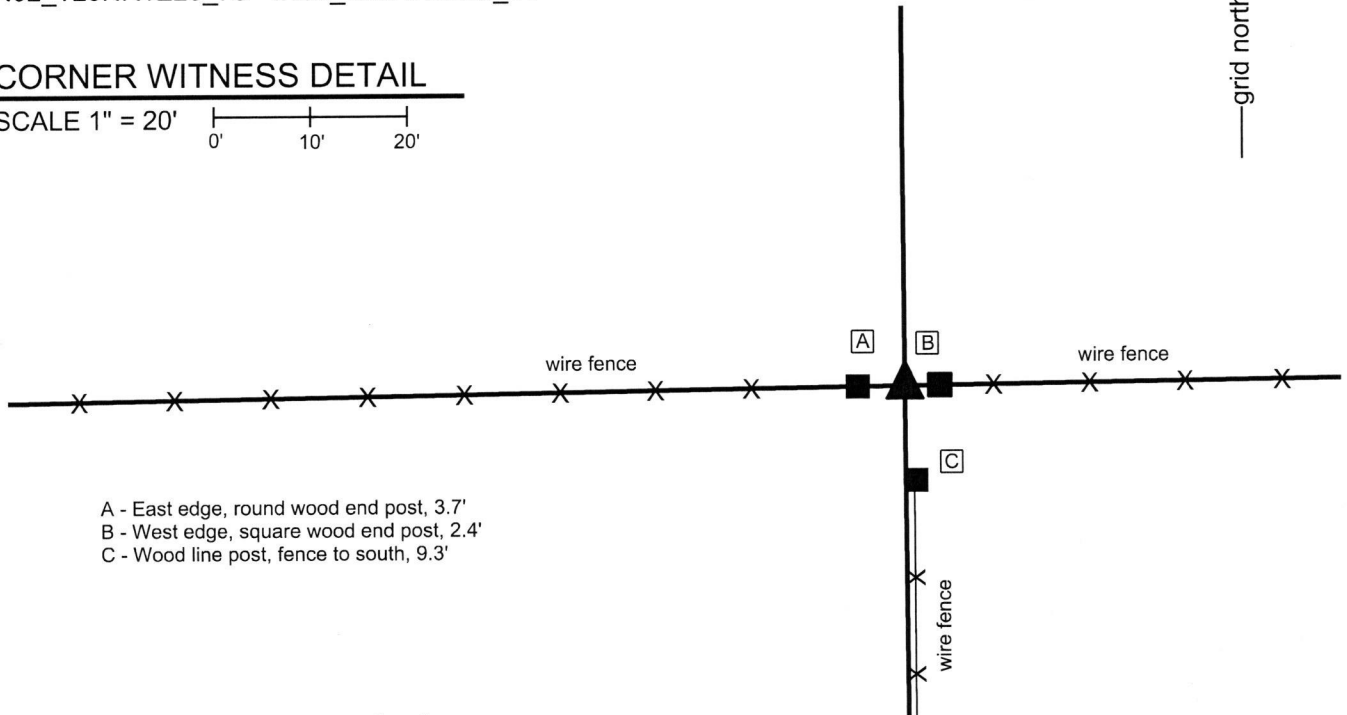
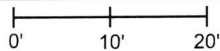
Indiana tie card references:

IN02_T20NR1E20_76 IN02_T20NR1E29_04



CORNER WITNESS DETAIL

SCALE 1" = 20'



- A - East edge, round wood end post, 3.7'
- B - West edge, square wood end post, 2.4'
- C - Wood line post, fence to south, 9.3'

The Harrison Monument was set over a stone found.

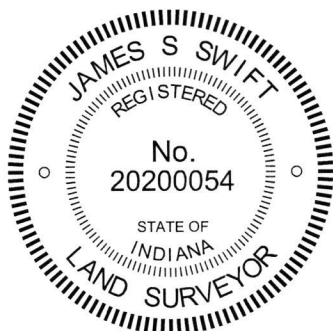
A BCS record of March 21-22, 1867 states, with respect to this corner, "Reestablished. Set two rocks. One 6.5.4 marked +. Top Rock 21.12.10 mark + on side and mark on top." No recent BCS tie cards were found referencing this corner.

Excavation was performed at this corner on March 21, 2018. Prior to excavation, several posts were found in near proximity to each other, including a round wood post acting as the end post for fencing to the west, a square wood post acting as the end post for fencing to the east and another post to the south which appears to be a line post for north-south fencing, on the ground to the north and standing to the south. The post which appears to be the end post for the fencing to the south is on the ground. The three standing posts are shown on the diagram. Excavation in the vicinity of the posts revealed several rocks found. A rock found at 30 inches deep is believed to be the 21.12.10 stone described in the 1867 record. Due to the depth of the stone and the presence of water in the soil, only the top of the rock was exposed. Measuring the exposed portion of the stone together with the use of a probe, it appears that the stone is 12 inches N-S by 21 inches E-W. The stone does not appear to be vertical and appears to be leaning toward the west. It is most likely that the stone was originally set in a vertical orientation, but has been displaced and leaned to the west. No specific marks were observed on the part of the stone exposed. The lower stone was not found. Being much smaller than the upper stone, it may be present below but was not found with a probe. It is noted that the west edge of the stone, likely the top of the stone as originally set, is under a stump and was not fully exposed.

The stone is in-line with the posts and fences to the east and west and is approximately one foot west of the fence to the south. Though the end post for the fence to the south is on the ground, it appears that the found stone is at the northwest edge of the original position of this post.

The stone was accepted as marking the corner and a Harrison monument was set over the main body of the stone, as found.

This corner was originally established as a wood post in 1822.



Kenneth E. Hedge
Kenneth E. Hedge, County Surveyor

James S. Swift
James S. Swift, IN LS 20200054

April 3, 2018

Clinton Township

Section 20
T20N, R1E

Section 29
T20N, R1E

SECTION CORNER RECORD

BOONE COUNTY SURVEYOR'S OFFICE

NE 800-200

State Plane grid coordinates NAD83 (CORS96):

North: 1787955.91 East: 3134847.05 (U.S. survey feet)

Type of monument: Harrison, 4" disk 'Section Corner'

Depth: One inch below adjacent road surface

Indiana tie card references:

IN02_T20NR1E20_80 IN02_T20NR1E21_72

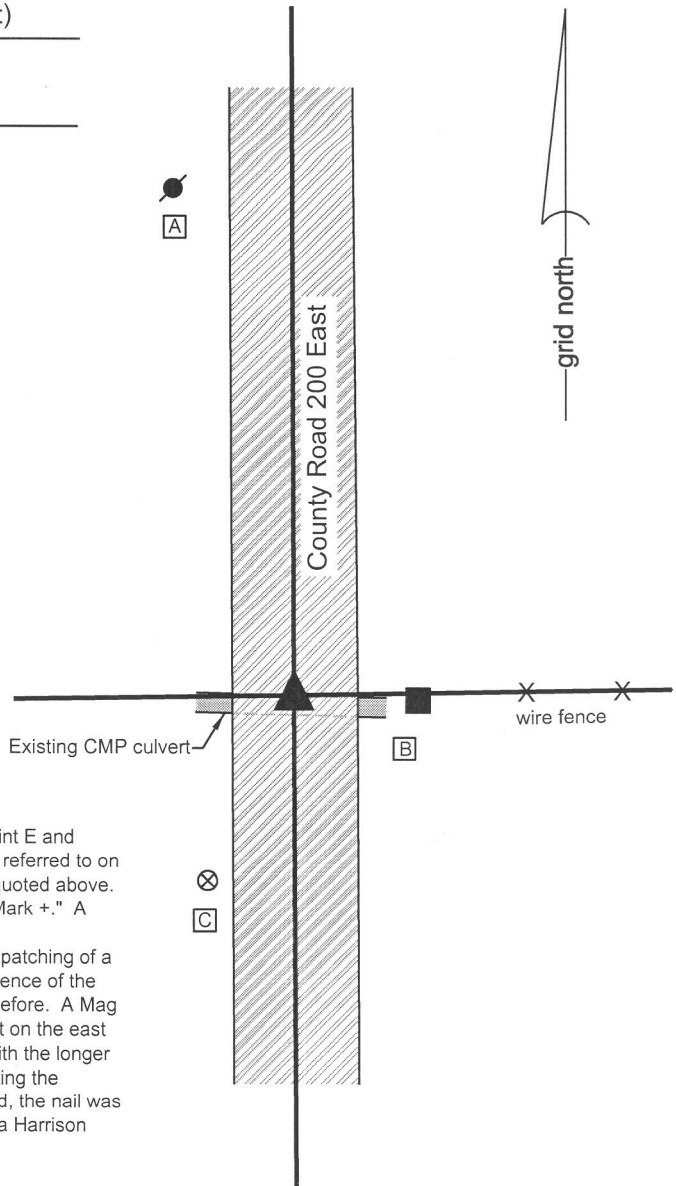
IN02_T20NR1E29_08 IN02_T20NR1E28_00

CORNER WITNESS DETAIL

SCALE 1" = 30'

- A - Mag nail set in S.E. side power pole, 3' a.g., 80.8'
- B - Mag nail set in W. side wood post, 2.5' a.g., 19.5'
- C - Boone County witness mark, flush, 32.0'

Boone County witness mark is a 3/8" diameter x 2' long rebar bearing a metal cap stamped "Boone County Witness Point."

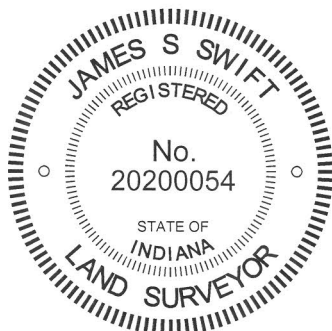


The Harrison monument was set in place of a Mag nail found.

A BCS record of May 8, 1865 states, with respect to this corner, "Found point E and drove stake." A BCS record dated March 21-22, 1867 states "Found stake referred to on page 401." The reference to page 401 is a reference to the 1865 record quoted above. A BCS record dated June 2, 1883 states "Reestablished Stone 18x14x14 Mark +." A BCS tie card dated July 9, 1975 states "No Stone Found - Set Rod."

No significant excavation was performed at this corner, as it falls within the patching of a recently installed corrugated steel culvert pipe. It is believed that any evidence of the corner would have been obliterated by the installation of the culvert, if not before. A Mag nail found in the center of the road fit reasonably well with the tie to the post on the east side of the road. The nail is slightly north of the post but generally in line with the longer fence bearing east from the post. The Mag nail was accepted as representing the position of the rod set in 1975. With no contrary evidence likely to be found, the nail was accepted as marking the corner. The nail was removed and replaced with a Harrison monument set in the same position.

This corner was originally established as a wood post in 1822.



Kenneth E. Hedge
Kenneth E. Hedge, County Surveyor

James S. Swift
James S. Swift, IN LS 20200054
March 27, 2015

Clinton Township

