

# SECTION CORNER RECORD

NE 100-700

## BOONE COUNTY SURVEYOR'S OFFICE

State Plane grid coordinates NAD83 (NSRS 2007):  
North: 1751495.52 East: 3161826.38 (U.S. survey feet)

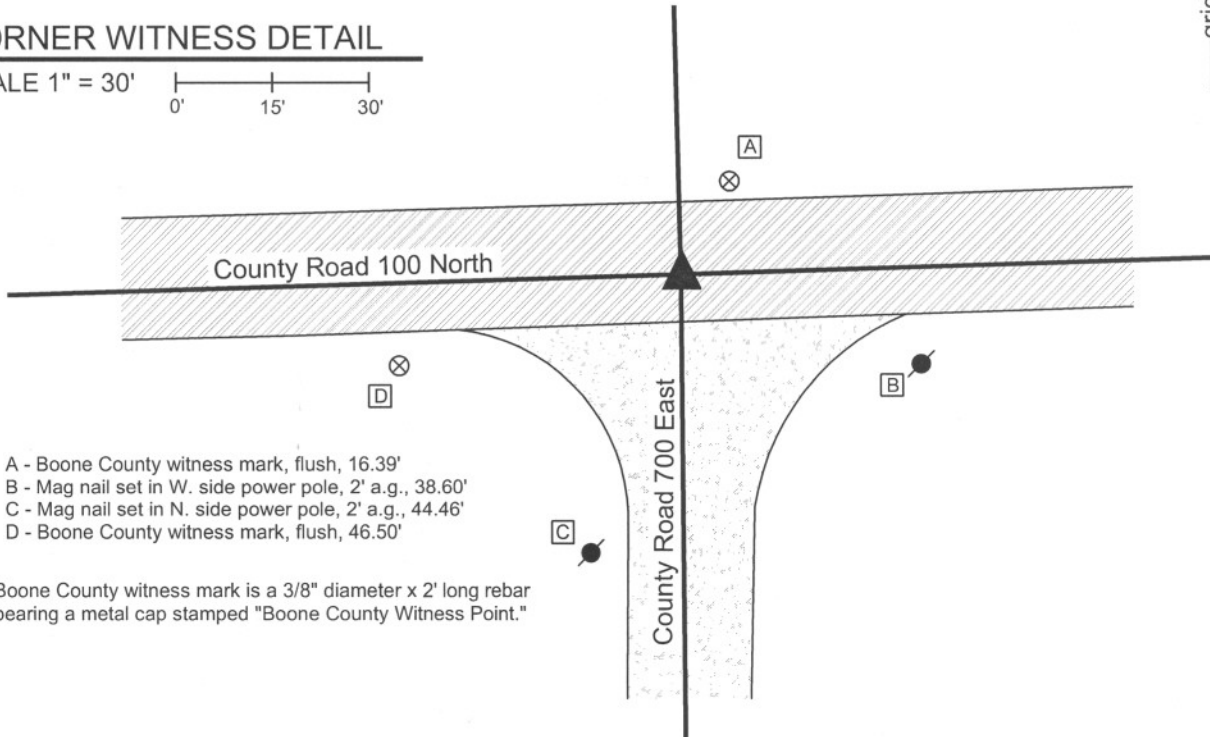
Type of monument: Harrison, 4" disk 'Section Corner'  
Depth: One inch below adjacent road surface

Indiana tie card references:  
IN02\_T19NR2E29\_72 IN02\_T19NR2E30\_80  
IN02\_T19NR2E31\_08 IN02\_T19NR2E32\_00



### CORNER WITNESS DETAIL

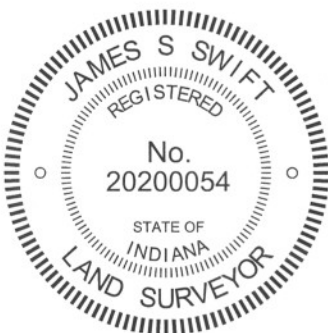
SCALE 1" = 30'  
0' 15' 30'



- A - Boone County witness mark, flush, 16.39'
- B - Mag nail set in W. side power pole, 2' a.g., 38.60'
- C - Mag nail set in N. side power pole, 2' a.g., 44.46'
- D - Boone County witness mark, flush, 46.50'

Boone County witness mark is a 3/8" diameter x 2' long rebar bearing a metal cap stamped "Boone County Witness Point."

The harrison monument was set over the top, high point of a stone found. A BCS record dated April 15-16, 1862 states "Found a Rock, yet shown correct by stump of one tree." A BCS tie card dated July 8, 1968 states "no stone." This corner was excavated on December 18, 2009. Prior to excavation a railroad spike was visible at the surface. Excavation revealed a railroad rail on end at 4 inches deep, below the railroad spike. A 5/8 inch rebar was found adjacent to the rail on the south side. Further excavation revealed a stone found 18 inches deep, 2.7 feet south and 1.8 feet east of the rail. The stone imesasures 7 inches N-S, 9 inches E-W and is 11 inches tall with no visible markings. The stone is fully embedded in the clay layer below the road with the top of the stone at the bottom of the sub-base layer of the road. The characteristics of this stone, embedded in the clay, horizontal with no specific markings are consistent with other stones which were set in the early 1800s and were found, but not set, by later County Surveyors. The 1862 reference to the stump of one tree is accepted as evidence that the stone was found to be the proper distance from an original bearing tree. The stone was held as the best evidence of the original location of the corner and the harrison monument was set directly over the top, high point of the stone. The railroad rail, railroad spike and rebar were all removed during excavation. The 1968 reference to "no stone" indicates that a stone was searched for but found. It is most likely that the railroad rail was set at that time, after the erroneous determination that other evidence, in the form of a stone, was not present. This corner was originally established as a wood post in July, 1821.



*Kenneth E. Hedge*  
Kenneth E. Hedge, County Surveyor

*James S. Swift*  
James S. Swift, IN LS 20200054  
July 25, 2011

Union Township	
Section 30 T19N, R2E	Section 29 T19N, R2E
Section 31 T19N, R2E	Section 32 T19N, R2E

PHOTOGRAPHIC DOCUMENTATION  
Date of photography: December 18, 2009

Railroad rail and rebar, as found.



The stone exposed.



View of the stone and County Road 100 North, from the west, looking east.



View of the stone and County Road 700 East, from the north, looking south.



For details and documentation, refer to related sheet "Section Corner Record."

# SECTION CORNER RECORD

NE-100-750

## BOONE COUNTY SURVEYOR'S OFFICE

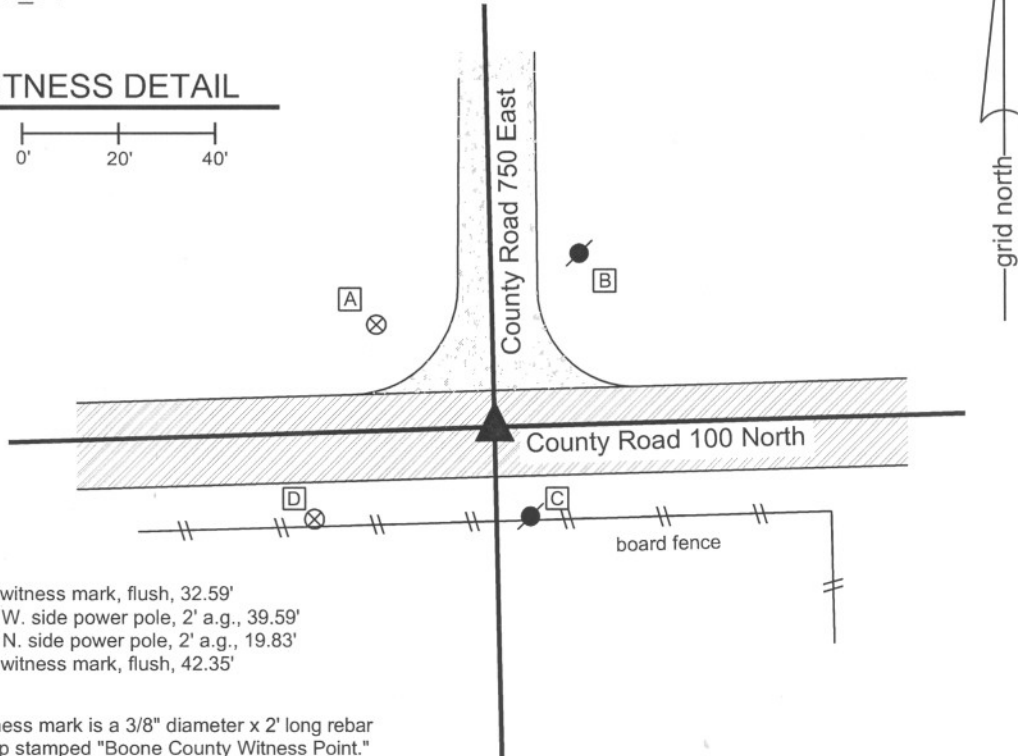
State Plane grid coordinates NAD83 (NSRS 2007):  
North: 1751576.80 East: 3164472.88 (U.S. survey feet)

Type of monument: Harrison, 4" disk 'Section Corner'  
Depth: One inch below adjacent road surface

Indiana tie card references:  
IN02\_T19NR2E29\_76  
IN02\_T19NR2E32\_04

### CORNER WITNESS DETAIL

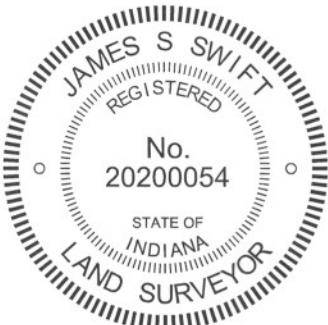
SCALE 1" = 40'  
0' 20' 40'



- A - Boone County witness mark, flush, 32.59'
- B - Mag nail set in W. side power pole, 2' a.g., 39.59'
- C - Mag nail set in N. side power pole, 2' a.g., 19.83'
- D - Boone County witness mark, flush, 42.35'

Boone County witness mark is a 3/8" diameter x 2' long rebar bearing a metal cap stamped "Boone County Witness Point."

The harrison monument was set over the position of the top, high point of a stone found. A BCS record of April 15-16, 1862 states "Re-established from stump of one tree. Set two Rocks. One is 12.12 by 8 in. Top One 15.10 by 9 in." A BCS tie card dated July 9, 1968 states "no stone." This corner was excavated on June 15, 2010. Prior to excavation a 5/8 inch rebar was visible at the surface. Excavation revealed a piece of railroad rail on end at 6 inches deep. The rebar was situated along the northwest edge of the rail. Further excavation revealed the record top stone found at 12 inches deep. The stone measured 9 inches N-S by 10 inches E-W by 15 inches tall. The stone was removed and the record lower stone was found below, measuring 12 inches N-S by 12 inches E-W. The height of the lower stone was not measured. The top, high point of the top stone was slightly north and east of the top center of the lower stone. The top, high point position of the top stone was held as marking the corner and the harrison monument was set in the same horizontal position as this point. The lower stone was left in the ground, but the top stone was not replaced. The rail and rebar, also removed during excavation, were approximately 0.3 feet west and 1.8 feet south of the stones. The 1968 reference to "no stone" indicates that a stone was searched for but found. It is most likely that the railroad rail was set at that time, after the erroneous determination that other evidence, in the form of a stone, was not present. This corner was originally established as a wood post in July, 1821.



*Kenneth E. Hedge*  
Kenneth E. Hedge, County Surveyor

*James S. Swift*  
James S. Swift, IN LS 20200054  
July 25, 2011

Union Township

Section 29  
T19N, R2E

▲  
Section 32  
T19N, R2E

PHOTOGRAPHIC DOCUMENTATION

Date of photography: June 15, 2010

View of the top stone.



View of the lower stone.



View of the top stone. View is from the south, looking north along County Road 750 East.



View of the top stone from above.



View of the lower stone from above.



For details and documentation, refer to related sheet "Section Corner Record."

# SECTION CORNER RECORD

NE-100-800

## BOONE COUNTY SURVEYOR'S OFFICE

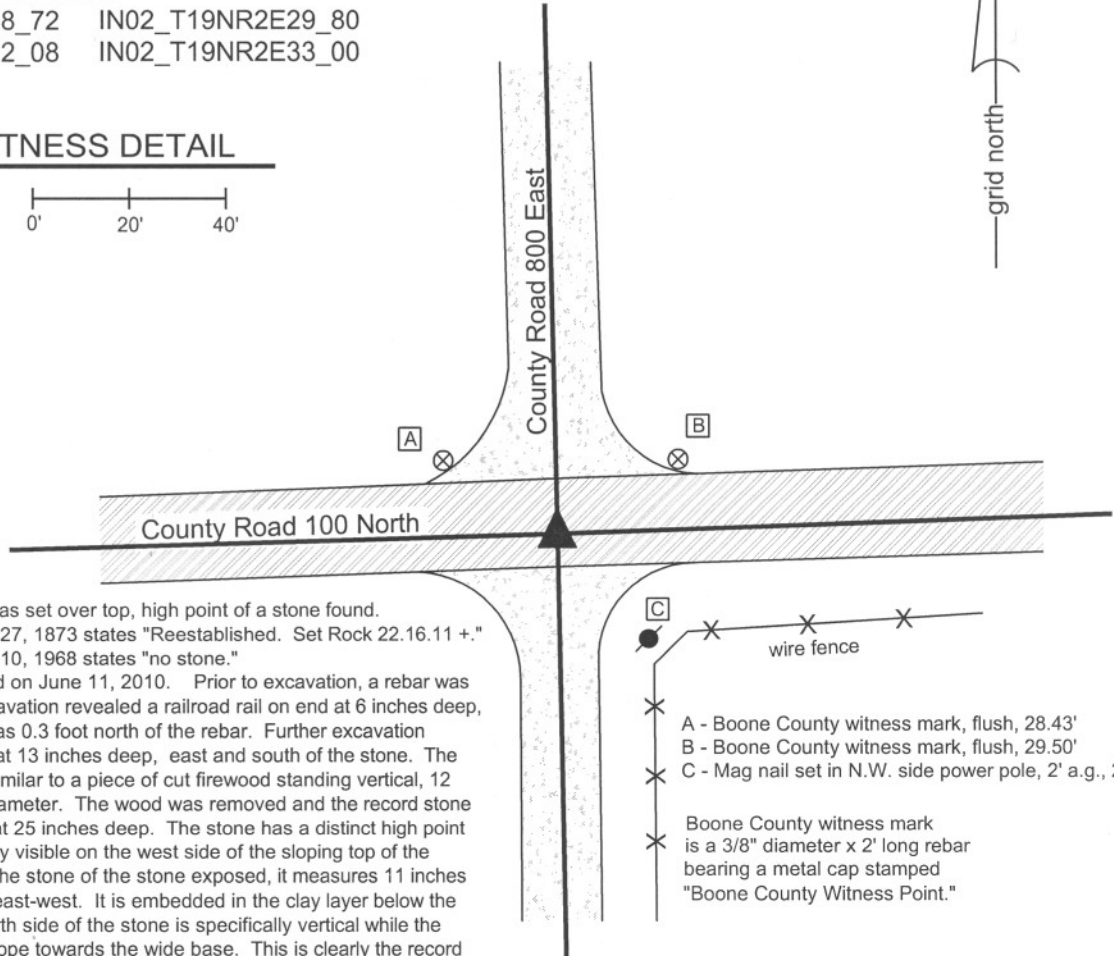
State Plane grid coordinates NAD83 (NSRS 2007):  
North: 1751650.147 East: 3167124.34 (U.S. survey feet)

Type of monument: Harrison, 4" disk 'Section Corner'  
Depth: One inch below adjacent road surface

Indiana tie card references:  
IN02\_T19NR2E28\_72 IN02\_T19NR2E29\_80  
IN02\_T19NR2E32\_08 IN02\_T19NR2E33\_00

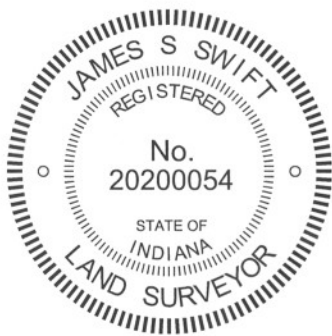
### CORNER WITNESS DETAIL

SCALE 1" = 40'



The harrison monument was set over top, high point of a stone found.  
A BCS record dated June 27, 1873 states "Reestablished. Set Rock 22.16.11 +."  
A BCS tie card dated July 10, 1968 states "no stone."  
This corner was excavated on June 11, 2010. Prior to excavation, a rebar was found at the surface. Excavation revealed a railroad rail on end at 6 inches deep, the top, center of which was 0.3 foot north of the rebar. Further excavation revealed a piece of wood at 13 inches deep, east and south of the stone. The piece of wood appeared similar to a piece of cut firewood standing vertical, 12 inches long by 3 inches diameter. The wood was removed and the record stone was found directly below at 25 inches deep. The stone has a distinct high point and an etched "+" is clearly visible on the west side of the sloping top of the stone. With 18 inches of the stone of the stone exposed, it measures 11 inches north-south by 14 inches east-west. It is embedded in the clay layer below the road and vertical. The north side of the stone is specifically vertical while the other sides of the stone slope towards the wide base. This is clearly the record stone from 1873. The top high point of the stone was held as marking the corner. The etched "+" is slightly west of the high point, but it has been observed that the markings on the stones set in the late 1800s often appear to be more of a identifying mark than a positional mark. The rebar (source unknown) and the rail (most likely set in 1968) were both removed during excavation. The stone was left in place and the harrison monument was set over the top, high point of the stone. The harrison monument is 2.2 feet east and 0.8 foot south of the position of the rebar found prior to excavation.  
This corner was originally established as a wood post in July, 1821.

- C - Mag nail set in N.W. side power pole, 2' a.g., 27.10'
- A - Boone County witness mark, flush, 28.43'
- B - Boone County witness mark, flush, 29.50'
- Boone County witness mark is a 3/8" diameter x 2' long rebar bearing a metal cap stamped "Boone County Witness Point."



*Kenneth E. Hedge*  
Kenneth E. Hedge, County Surveyor

*James S. Swift*  
James S. Swift, IN LS 20200054  
July 22, 2011

Union Township

Section 29 T19N, R2E	Section 28 T19N, R2E
Section 32 T19N, R2E	Section 33 T19N, R2E

PHOTOGRAPHIC DOCUMENTATION

Date of photography: June 11, 2010

View of the piece of wood above the stone.



View of the stone as first exposed.



View of the stone more fully exposed.



View of the from the west, looking across the stone in shadows, along C.R. 100 North. Note the piece of wood visible on the safety cone.



View of the stone from above.



For details and documentation, refer to related sheet "Section Corner Record."

# SECTION CORNER RECORD

NE 150-700

## BOONE COUNTY SURVEYOR'S OFFICE

State Plane grid coordinates NAD83 (2011):

North: 1754146.78 East: 3161764.36 (U.S. survey feet)

Type of monument: Harrison, 4" disk 'Section Corner'

Depth: Three inches above adjacent ground

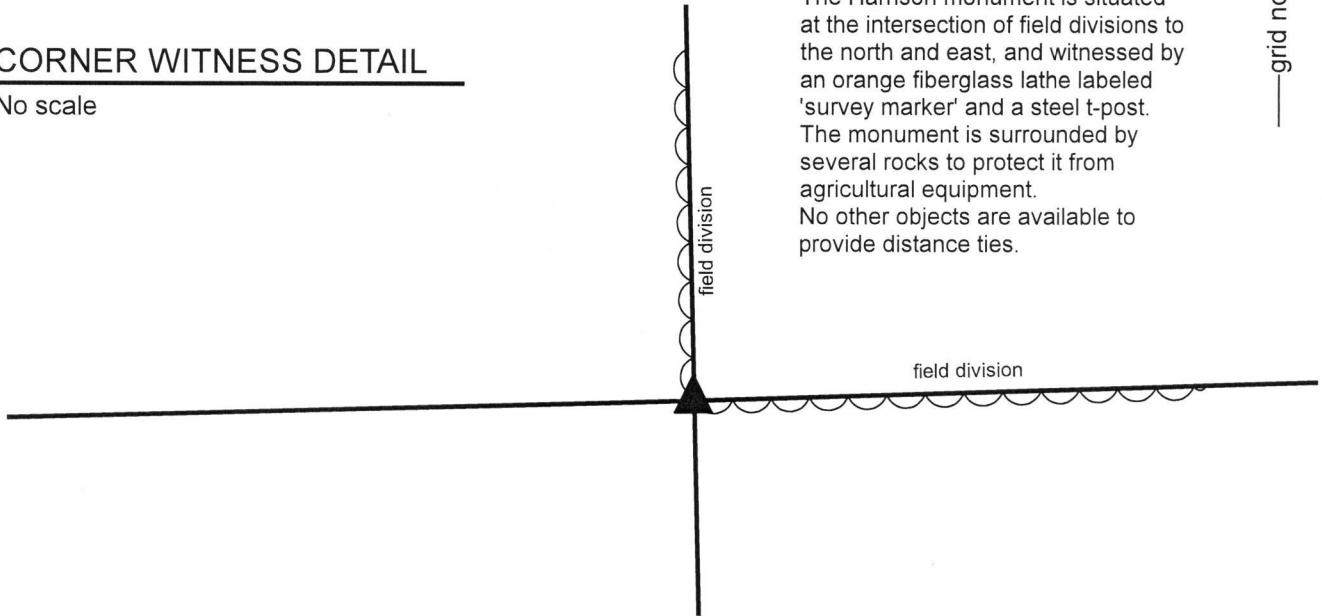
Indiana tie card references:

IN02\_T19NR2E29\_36 IN02\_T19NR2E30\_44



### CORNER WITNESS DETAIL

No scale



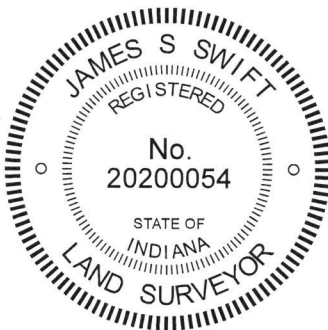
The Harrison monument is situated at the intersection of field divisions to the north and east, and witnessed by an orange fiberglass lathe labeled 'survey marker' and a steel t-post. The monument is surrounded by several rocks to protect it from agricultural equipment. No other objects are available to provide distance ties.

The Harrison monument was set in place of a stone found.

No specific descriptions of this corner were found in the BCS Surveyor's Record, nor were any recent BCS tie cards found referencing this corner. The corner is mentioned as the terminal point for measurements in records of 1849 and 1873, indicating that some object from which to measure was present at those times.

Excavation was performed at this corner on May 7, 2018. During reconnaissance in 2011, a wood post was observed standing. The post did not appear to be ancient, being a round wood post similar to a section of power pole. As of 2018, the post was broken off with the top portion of the post lying on the ground, adjacent to the base of the post which was visible flush with the ground. Excavation around the post revealed several rocks including a notable stone found at the north edge of the post. The stone was at 8 inches deep and measured 12 inches N-S by 12 inches E-W by 8 inches tall. The top of the stone was painted pink, indicating probable previous discovery by a survey crew. No specific marks were observed on the stone. The base of an ancient wood post was found at the north edge of the stone. Hence, it was observed in the field that the found stone was situated between the newer, round post and an older, apparently square post. The stone did not appear to be acting as a brace to either post. The stone, being horizontal and oriented in cardinal directions, fit with the characteristics for other stones found throughout the county for which the records indicate that a monument was already present when the BCS survey crews of the mid 19th century held the corner. The general position of the stone and posts fit well with the relative positions of proximate corners. The stone was accepted as representing the best available evidence of the corner and was held as marking the corner. The stone was removed and replaced with a Harrison monument in the position of the top, center of the rock, as found. The stone, along with several other rocks found nearby, was set, partially embedded in the ground, adjacent to the Harrison to protect the monument from damage by agricultural equipment.

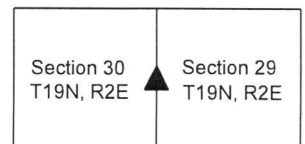
This corner was originally established as a wood post in 1821.



*Kenneth E. Hedge*  
 Kenneth E. Hedge, County Surveyor

*James S. Swift*  
 James S. Swift, IN LS 20200054  
 May 16, 2018

Union Township



# SECTION CORNER RECORD

NE 150-800

## BOONE COUNTY SURVEYOR'S OFFICE

State Plane grid coordinates NAD83 (NSRS 2007):

North: 1754300.64 East: 3167064.56 (U.S. survey feet)

Type of monument: Harrison, 4" disk 'Section Corner'

Depth: Six inches below the surface of the gravel road.

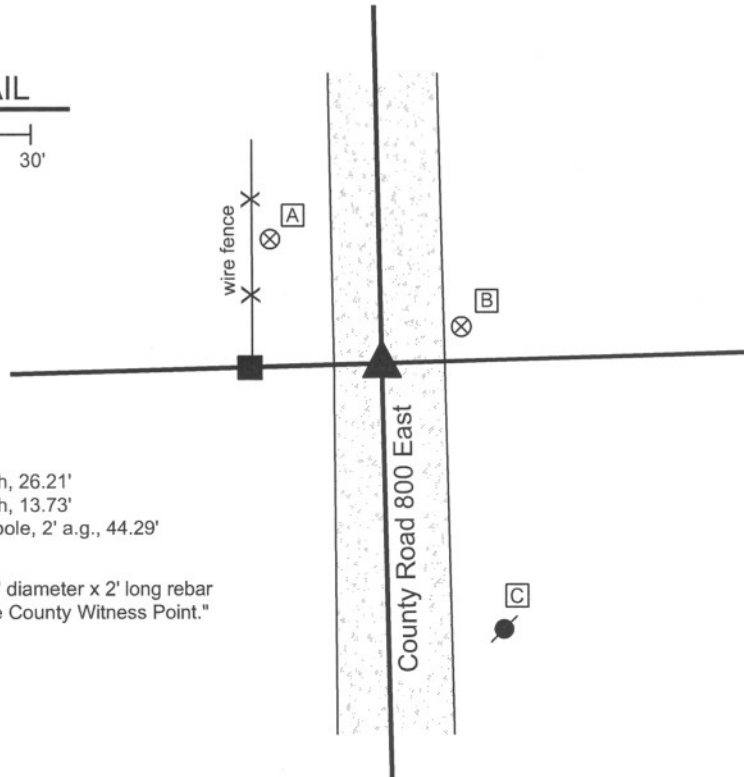
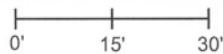
Indiana tie card references:

IN02\_T19NR2E28\_36

IN02\_T19NR2E29\_44

### CORNER WITNESS DETAIL

SCALE 1" = 30'



- A - Boone County witness mark, flush, 26.21'
- B - Boone County witness mark, flush, 13.73'
- C - Mag nail set in N.W. side power pole, 2' a.g., 44.29'

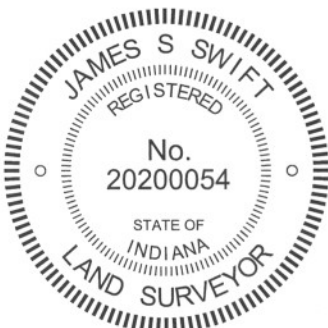
Boone County witness mark is a 3/8" diameter x 2' long rebar bearing a metal cap stamped "Boone County Witness Point."

The harrison monument was set in place of a stone found.

A BCS record of January 29, 1869 states "Re-established from the trees. Set a Rock 16.15.12 in. marked +." Field notes from April 1970 state "no stone set rail." No tie card was found for this field note. A BCS tie card dated August 23, 1974 states "No stone, found rail."

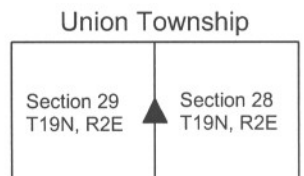
This corner was excavated on June 11, 2010. Prior to excavation the top of a section of railroad rail was visible at the surface of the gravel road and the apparent top of a large rock was found present, also at the surface of the gravel road. Excavation revealed that the rock was the record stone from the 1869 record. It measured 12 inches E-W by 15 inches N-S by approximately 16 inches tall. It was embedded in the clay layer below the road, protruding approximately 4 inches out of the clay into the road bed. Notably, the the road bed is only approximately 4 inches deep at this point. The top of the stone appeared to be worn to smoothness by a road grader. No specific marks were found on the stone and it is presumed that the mark was worn off the top of the stone by repeated scrapings of the road grader. The stone was removed and a harrison monument was set at the position of the top, center of the stone. The railroad rail, removed during excavation had been very close to the southwest edge of the stone. The position of the rail was 1 foot west and 1.3 feet south of the harrison monument.

This corner was originally established as a wood post in July, 1821.



*Kenneth E. Hedge*  
 Kenneth E. Hedge, County Surveyor

*James S. Swift*  
 James S. Swift, IN LS 20200054  
 July 25, 2011





PHOTOGRAPHIC DOCUMENTATION

Date of photography: June 11, 2010

View of the stone as first exposed.



View of the stone washed.



View from the east, showing the stone and the post on the west side of the road.



View from the south, looking across the stone and north along County Road 800 East.



For details and documentation, refer to related sheet "Section Corner Record."

# SECTION CORNER RECORD

## BOONE COUNTY SURVEYOR'S OFFICE

NE 200-700

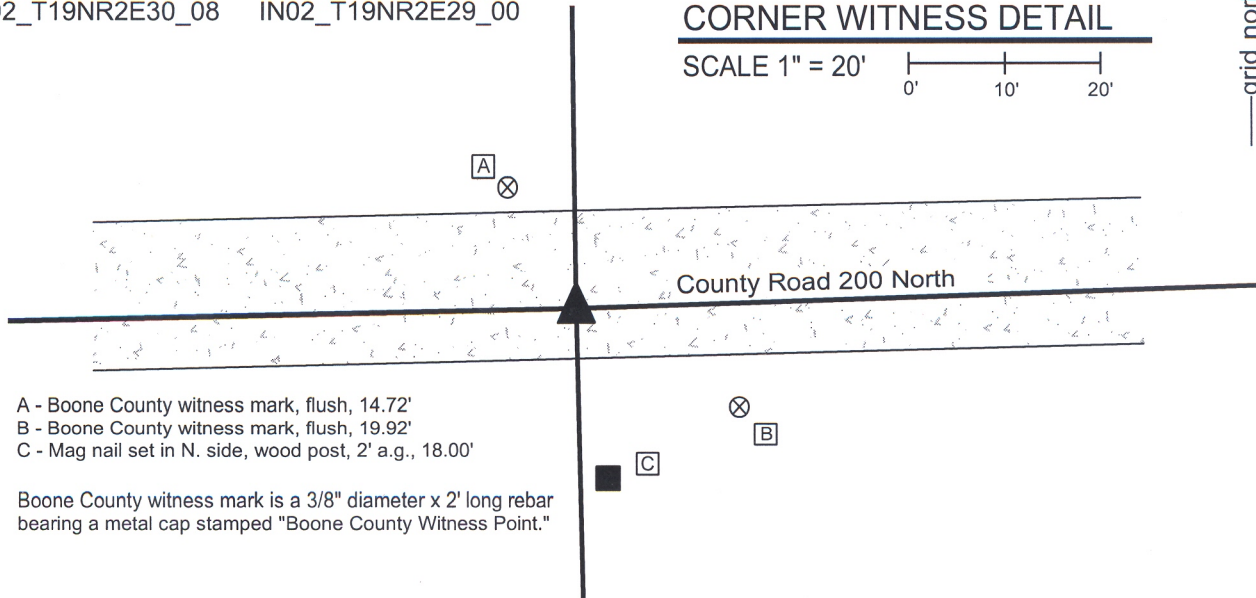
State Plane grid coordinates NAD83 (NSRS 2007):  
 North: 1756791.75 East: 3161700.86 (U.S. survey feet)

Type of monument: Harrison, 4" disk 'Section Corner'  
 Depth: Six inches below the adjacent gravel road surface.

Indiana tie card references:  
 IN02\_T19NR2E19\_76 IN02\_T19NR2E20\_80  
 IN02\_T19NR2E30\_08 IN02\_T19NR2E29\_00

### CORNER WITNESS DETAIL

SCALE 1" = 20'



- A - Boone County witness mark, flush, 14.72'
- B - Boone County witness mark, flush, 19.92'
- C - Mag nail set in N. side, wood post, 2' a.g., 18.00'

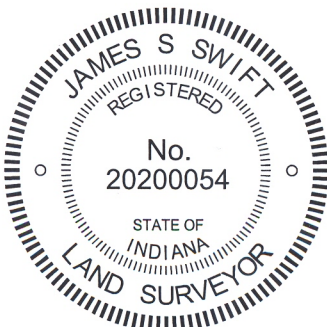
Boone County witness mark is a 3/8" diameter x 2' long rebar bearing a metal cap stamped "Boone County Witness Point."

The harrison monument was set over a stone found.

A BCS record of January 28, 1869 states "Reestablished from Ash. Set two Rocks. One 5 1/2, 5 by 4 in. marked +. Top Rock 15, 7 by 6 inch. marked + on side." A BCS tie card dated April 1970 states "No stone, set rail."

This corner was excavated on June 14, 2010. Prior to excavation a railroad rail was found 3 inches below the surface of the gravel road, leaning substantially towards the east. Excavation revealed several stones at various depths and positions. A stone which was accepted as being the record lower stone was found at 22 inches deep, 4 feet west and 0.3 feet south of the top of the rail, as originally found. This stone was 5 inches tall by 5 1/2 inches N-S by 7 inches E-W with a clearly visible "+" etched in the top center. Two of the dimensions of the stone match the record dimensions but the E-W dimension does not match the record dimension of 4 inches. Analysis of this situation yielded the conclusion that this is the stone mentioned in the 1869 record and that the variation in the one dimension is most likely to have been a notation error. The fact that the smallest dimension of the stone, as found, is the vertical dimension fits with the character of the stone as being the lower stone. It has been observed at numerous other corners that when the County Surveyors of the second half of the 19th century set two rocks at a corner, the lower stone was usually set horizontally, acting as a base and the upper stone was set vertically. The character of the stone found at this corner matches that observation. The etched "+" on the top, center of the stone is also characteristic of the lower stone. Furthermore, the depth of the stone, being embedded in the clay layer below the road, approximately 14 inches below the bottom of the road bed, fits well with the fact that the upper stone was recorded to be 15 inches tall, hence would have protruded slightly into the bottom of the road bed. This is also characteristic of other top, vertical stones set by County Surveyors in that era. The found stone was held as the marking the corner and the harrison monument was set directly over the etched "+" on the top of the stone.

Another stone was found 1.5 feet East and 0.3 foot South of the record stone, being at 4 inches deep and measuring 13 inches tall by 10 inches N-S by 6 inches E-W with no visible marks. Two other stones were found against each other, approximately 0.8 foot south of the record stone, being 13x9x6 inches at 13 inches deep and 9x5x3 inches deep at 23 inches, respectively. The latter stone was against the lower west edge of the former stone. The rail and three extra stones were removed during excavation. This corner was originally established as a wood post in July, 1821.

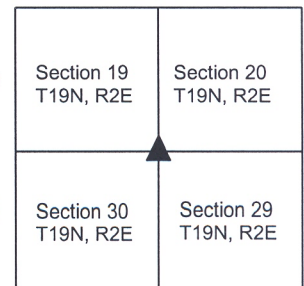


*Kenneth E. Hedge*  
 Kenneth E. Hedge, County Surveyor

*James S. Swift*  
 James S. Swift, IN LS 20200054

July 25, 2011, Revised February 6, 2013

Marion Twp



Union Twp

PHOTOGRAPHIC DOCUMENTATION

Date of photography: June 14, 2010

The railroad rail and the first stone exposed.



The railroad rail and the second stone exposed.



View of the rail, the first stone exposed and the post on the south side of the road.



The record lower stone with etched mark on top.



For details and documentation, refer to related sheet "Section Corner Record."

# SECTION CORNER RECORD

NE 200-750

## BOONE COUNTY SURVEYOR'S OFFICE

State Plane grid coordinates NAD83 (NSRS 2007):

North: 1756874.16 East: 3164353.96 (U.S. survey feet)

Type of monument: Harrison, 4" disk 'Section Corner'

Depth: Six inches below adjacent gravel road surface

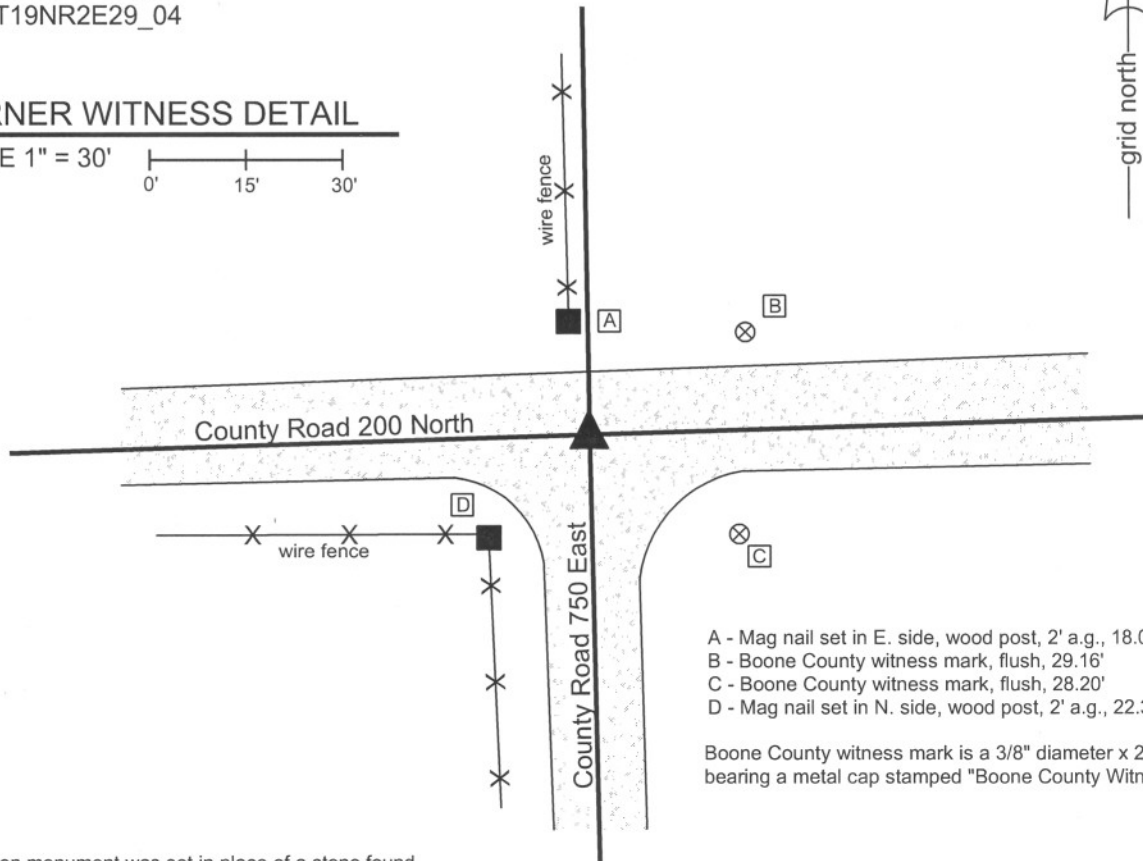
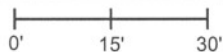
Indiana tie card references:

IN02\_T19NR2E20\_76

IN02\_T19NR2E29\_04

### CORNER WITNESS DETAIL

SCALE 1" = 30'



- A - Mag nail set in E. side, wood post, 2' a.g., 18.08'
- B - Boone County witness mark, flush, 29.16'
- C - Boone County witness mark, flush, 28.20'
- D - Mag nail set in N. side, wood post, 2' a.g., 22.33'

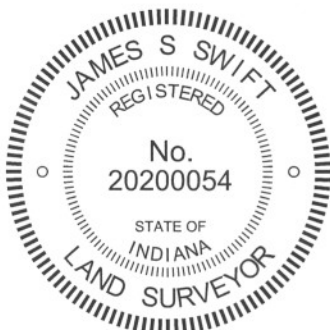
Boone County witness mark is a 3/8" diameter x 2' long rebar bearing a metal cap stamped "Boone County Witness Point."

The harrison monument was set in place of a stone found.

A BCS record of January 28, 1869 states "Reestablished from stump of Oak and old stake. Set a Rock 15.8 by 12 in. marked +..." A BCS tie card dated July 8, 1974 states "found rail."

This corner was excavated on June 15, 2010. Prior to excavation a vertical section of railroad rail was found at 9 inches deep. Excavation revealed a stone found at 7 inches deep, approximately 2 feet northwest of the rail. The stone is vertical and embedded in the clay layer below the road, protruding 5 inches out of the clay layer, into the bottom of the road bed. The top of the stone appears to be broken off and no specific markings were found. The stone measured 15 inches tall by 13 inches E-W by 9 inches N-S. The E-W, N-S dimensions uniformly measure 1 inch larger than the record dimension and it is estimated that approximately 1 inch was broken off of the top. Hence, the entire stone appeared to be 1 inch larger than the record dimension. This uniform variation from the record dimension has been observed on the stones found at other corners. The stone was accepted as being the record stone described in the 1869 record and was held as marking the corner. The stone was removed and a harrison monument was set in its place. The rail, also removed during excavation, had been 1.4 feet east and 1.6 feet south of the stone.

This corner was originally established as a wood post in July, 1821.



*Kenneth E. Hedge*  
Kenneth E. Hedge, County Surveyor

*James S. Swift*  
James S. Swift, IN LS 20200054  
July 25, 2011

Marion Twp

Section 20  
T19N, R2E

Union Twp

Section 29  
T19N, R2E

PHOTOGRAPHIC DOCUMENTATION

Date of photography: June 15, 2010

View of the stone from the north.



View of the stone from above.



View of the stone from the north, looking south along County Road 200 North.



View of the stone from above and south.



For details and documentation, refer to related sheet "Section Corner Record."

# SECTION CORNER RECORD

NE 200-800

## BOONE COUNTY SURVEYOR'S OFFICE

State Plane grid coordinates NAD83 (NSRS 2007):

North: 1756953.64 East: 3167009.95 (U.S. survey feet)

Type of monument: Harrison, 4" disk 'Section Corner'

Depth: four inches below the adjacent gravel road surface.

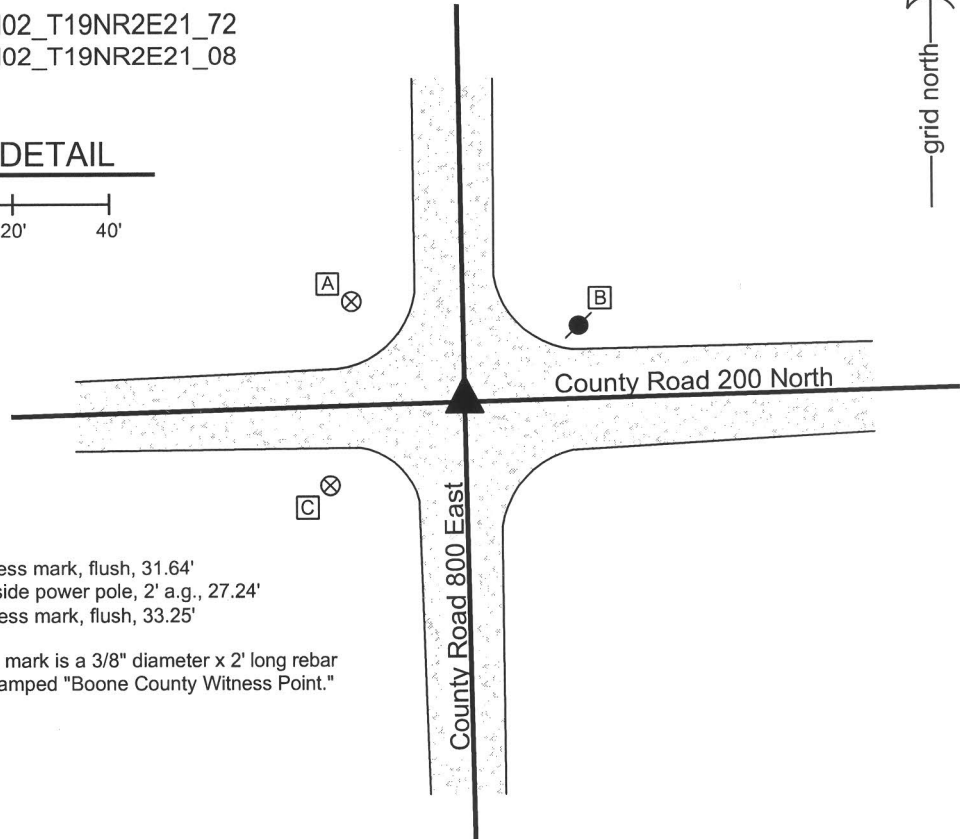
Indiana tie card references:

IN02\_T19NR2E20\_80 IN02\_T19NR2E21\_72

IN02\_T19NR2E28\_00 IN02\_T19NR2E21\_08

### CORNER WITNESS DETAIL

SCALE 1" = 40'



- A - Boone County witness mark, flush, 31.64'
- B - Mag nail set in W. side power pole, 2' a.g., 27.24'
- C - Boone County witness mark, flush, 33.25'

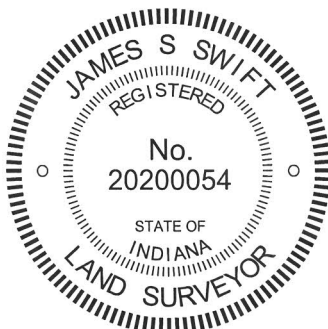
Boone County witness mark is a 3/8" diameter x 2' long rebar bearing a metal cap stamped "Boone County Witness Point."

The harrison monument was set over a stone found.

A BCS tie card dated July 8, 1974 states "found rail + sm. stone." The field notes associated with this tie card, dated June 28, 1974, states "found stone with rail." No specific descriptions of this corner were found in the old BCS Surveyor's Record. No information was found pertaining to the setting of the rail found in 1974.

This corner was excavated on June 14, 2010. Prior to excavation a section of railroad rail was found at the surface, apparently leaning substantially towards the west. Excavation revealed that the rail is leaning over the stone. The top of the rail is over the top of the stone and the stone is 14 inches deep. The rail was removed. The stone is embedded in the clay layer below the road, protruding approximately 3 inches into the bottom of the road bed. The top 16 inches of the stone were exposed and the stone remained stable upon an attempt to move it, hence it clearly extends further into the clay. At 13 inches from the top, the stone measures 14 inches N-S by 11 inches E-W. With the stone exposed, it was observed that the position of the top of the rail had been towards the west side of the stone, slightly south of the center, but had clearly been set such that the top of the rail was a reasonable indicator of the position of the stone. The position of the top of the rail, as originally found, was held as the specific location of the corner. A harrison monument was broken off at 8 inches tall and set over the stone, with the top 4 inches of the stone encased in concrete along with the harrison.

This corner was originally established as a wood post in July, 1821.



*Kenneth E. Hedge*  
 \_\_\_\_\_  
 Kenneth E. Hedge, County Surveyor

*James S. Swift*  
 \_\_\_\_\_  
 James S. Swift, IN LS 20200054  
 July 25, 2011, Revised March 18, 2013

Marion Twp

Union Twp

Section 20 T19N, R2E	Section 21 T19N, R2E
Section 29 T19N, R2E	Section 28 T19N, R2E

PHOTOGRAPHIC DOCUMENTATION

Date of photography: June 15, 2010

View from the south showing the rail leaning over the stone.



View from above showing the rail leaning over the stone.



View from above and south showing the stone after the rail had been removed.



View from the east, looking across the stone and west along County Road 200 North.



View from above and north showing the stone after the rail had been removed.



For details and documentation, refer to related sheet "Section Corner Record."