

SECTION CORNER RECORD

SW 400-1000

BOONE COUNTY SURVEYOR'S OFFICE

State Plane grid coordinates NAD83 (2011):

North: 1724143.45 East: 3072032.74 (U.S. survey feet)

Type of monument: Harrison, 4" disk 'Section Corner'

Depth: Six inches below adjacent gravel road surface

Indiana tie card references:

IN02_T18NR2W20_80 IN02_T18NR2W21_72

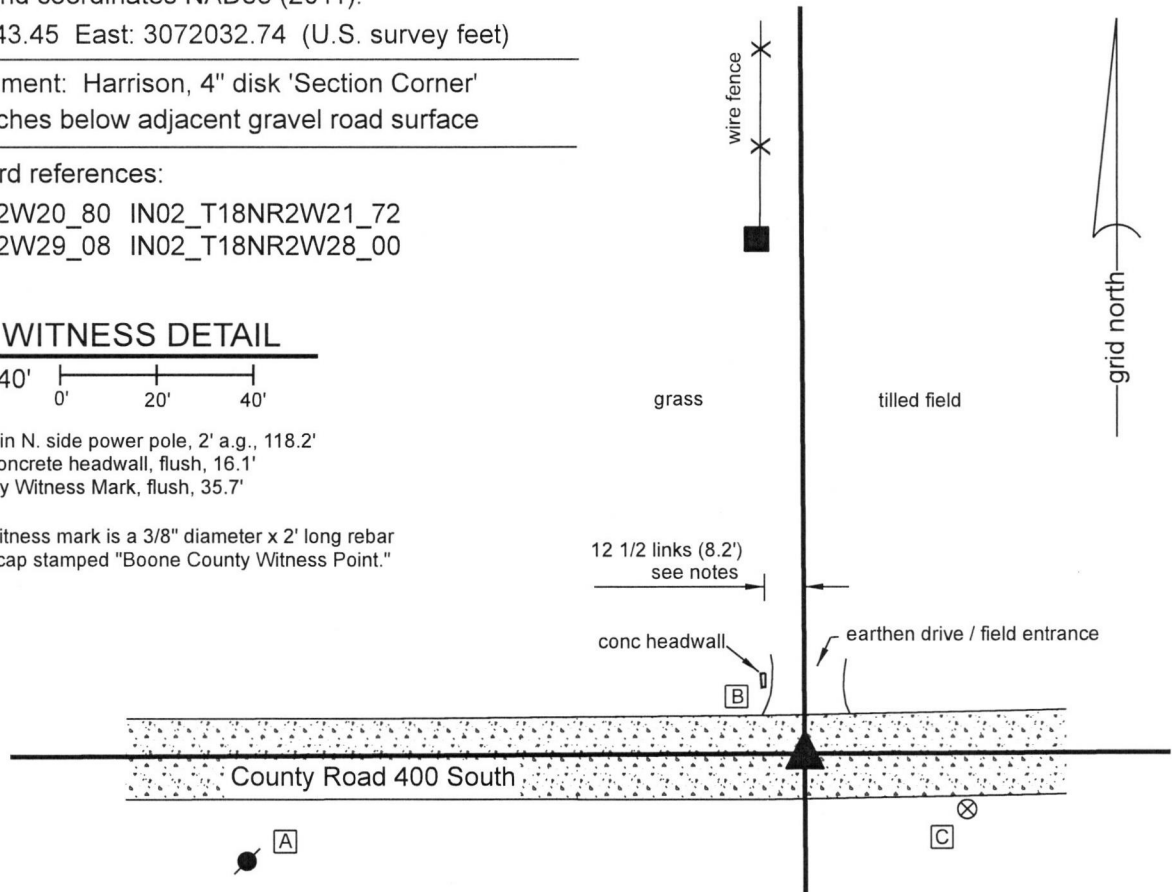
IN02_T18NR2W29_08 IN02_T18NR2W28_00

CORNER WITNESS DETAIL

SCALE 1" = 40'

- A - Mag Nail set in N. side power pole, 2' a.g., 118.2'
- B - S.E. corner concrete headwall, flush, 16.1'
- C - Boone County Witness Mark, flush, 35.7'

Boone County witness mark is a 3/8" diameter x 2' long rebar bearing a metal cap stamped "Boone County Witness Point."

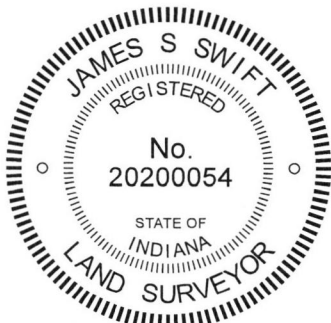


The Harrison monument was set over a stone found.

The position of this corner is discussed in significant detail in BCS records of 1887 and 1889. A record of February 14-16, 1887 gives this explanation for the establishment of the corner: "Point for E found by running line from C and doubling distance from C to D making C to E 79.94 & C to D 39.97 & D to E 39.97." Note, in this record the subject corner is referred to as corner E. A subsequent record of May 2, 1887 states, with respect to this corner, "Set two rocks. One 12x8x6 +. The other 8x7x5 +." Another record, dated June 3, 1889 appears to be the report of a survey performed in response to land owners who questioned the position of the corner and discusses in considerable detail the position of the corner relative to other proximate corners, concluding with the statement, "The parties requiring the resurvey consent that the corner be confirmed as set." This record confirms the position of the two rocks set in 1887. The description of a survey dated May 31, 1943 describes the east line of the property to the west as beginning 12 1/2 links west of the corner. No recent BCS tie cards were found referencing this corner.

The corner was excavated on October 8, 2018. Prior to excavation, no metal monuments were found in the road. A position was calculated for the corner by doubling the distance between the section corner 1/2 mile east (see Corner SW 400-950) and evidence of the corner 1/4 mile east in the form of a centerline/fenceline intersection. It was observed that this calculated position fell almost exactly 12 1/2 links east of the southerly prolongation of a fence beginning approximately 100 feet north of the road, consistent with the 1943 description. Excavation at the calculated position revealed both stones described in the May 2, 1887 record. The top stone was found at 16 inches deep. The stone was vertical, measuring 8 inches tall by 7 inches N-S by 5 inches E-W. The stone was of a reasonably soft material and the top of the stone was damaged during excavation. No mark was found. The stone was removed and the lower stone was found at 26 inches deep, directly below the top stone. This stone measured 12 inches E-W by 8 inches N-S. The thickness of the stone was not measured. An etched "+" mark was clearly visible at the center of the top of the stone. The two stones were accepted as marking the corner. The top stone was removed, the lower stone was left in place and a Harrison monument was set directly over the mark on the lower stone.

This corner was originally established as a wood post in 1820.



Kenneth E. Hedge
 Kenneth E. Hedge, County Surveyor

James S. Swift
 James S. Swift, IN LS 20200054
 November 20, 2018

Jackson Township

Section 20 T18N, R2W	Section 21 T18N, R2W
Section 29 T18N, R2W	Section 28 T18N, R2W

An arrow points to the intersection of Section 20 and Section 29.

SECTION CORNER RECORD

SW 400-1050

BOONE COUNTY SURVEYOR'S OFFICE

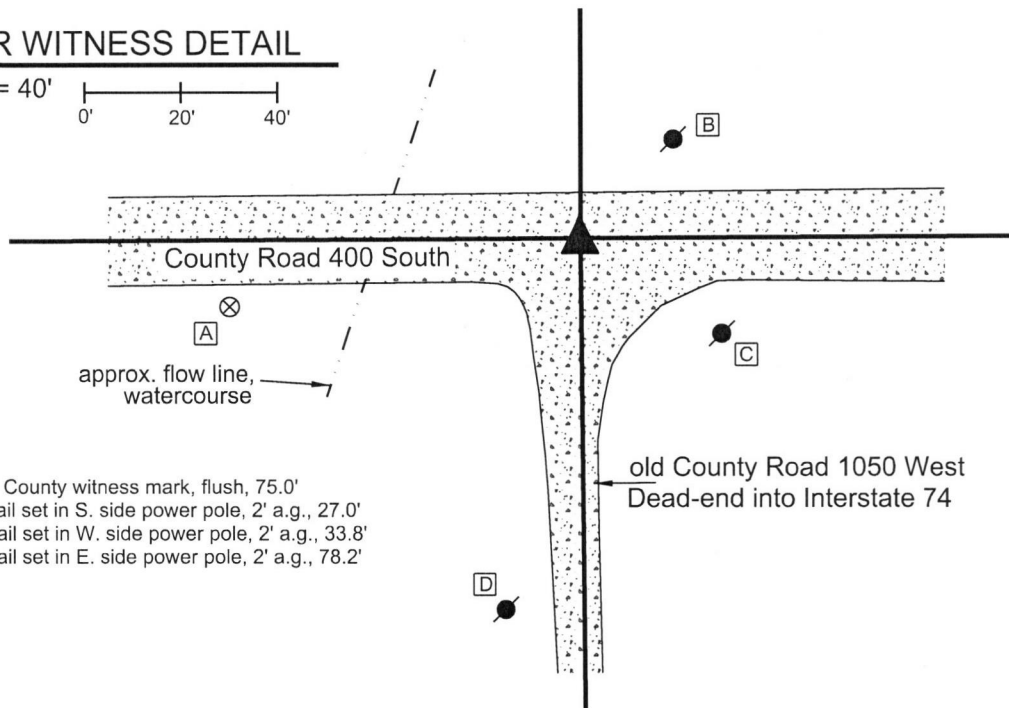
State Plane grid coordinates NAD83 (2011):
North: 1724131.58 East: 3069366.56 (U.S. survey feet)

Type of monument: Harrison, 4" disk 'Section Corner'
Depth: Six inches below adjacent gravel road surface

Indiana tie card references:
IN02_T18NR2W20_76 IN02_T18NR2W29_04

CORNER WITNESS DETAIL

SCALE 1" = 40'



- A - Boone County witness mark, flush, 75.0'
- B - Mag nail set in S. side power pole, 2' a.g., 27.0'
- C - Mag nail set in W. side power pole, 2' a.g., 33.8'
- D - Mag nail set in E. side power pole, 2' a.g., 78.2'

The Harrison monument was set in place of a square headed bolt spike. This corner is documented in considerable detail in BCS records of February 14-16, March 10, and May 2, 1887. The final entry in May, 1887 states that a rock 11x7x5 inches marked + was set over a three cornered rock marked +. No BCS tie cards were found referencing this corner. Excavation was performed at this corner on October 8, 2018. Prior to excavation, a square headed bolt spike was found at 8 inches below the surface of the gravel road. This bolt spike was originally found as part of the current BCS section corner perpetuation project in July, 2011. Excavation revealed fragments of an old wood stake approximately below the bolt spike. Further excavation of an area extending 4 feet north, 4 feet east, 3 feet south and 3 feet west of the spike revealed no further evidence of the corner. Excavation was performed to 22 inches deep, which appeared to be below the bottom of the road bed. It is noted, though, that the road bed in this area is significantly influenced by the presence of a large drainage culvert slightly to the west of corner and that the overall ground slopes toward this culvert. The bolt spike was removed during excavation and found to have a 12 inch long shaft of 3/4 inches diameter. The bolt spike and fragments of wood stake fit well with the local evidence of the corner in the form of the approximate center of County Road 400 South and the evident center of County Road 1050 West. It is noted that C.R. 1050 dead-ends into Interstate 74 and does not appear to be actively maintained as a public road. The spike and fragments of stake fit well with the relative positions of proximate corners and were accepted as providing the best available evidence of the corner. It is considered most likely that the stone set in 1887 was removed in association with installation of the culvert to the west or some other human or natural action associated with the presence of the watercourse. The bolt spike and fragments of wood stake were removed during excavation. A Harrison monument was set in the position of the bolt spike as originally found. This corner was originally established as a wood post in 1820.



Kenneth E. Hedge
Kenneth E. Hedge, County Surveyor

James S. Swift
James S. Swift, IN LS 20200054
October 31, 2018

Jackson Township

Section 20
T18N, R2W

▲
Section 29
T18N, R2W

SECTION CORNER RECORD

SW 400-1100

BOONE COUNTY SURVEYOR'S OFFICE

State Plane grid coordinates NAD83 (2011):

North: 1724118.70 East: 3066733.25 (U.S. survey feet)

Type of monument: INDOT Type B

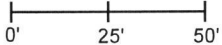
Depth: two inches below adjacent road surface

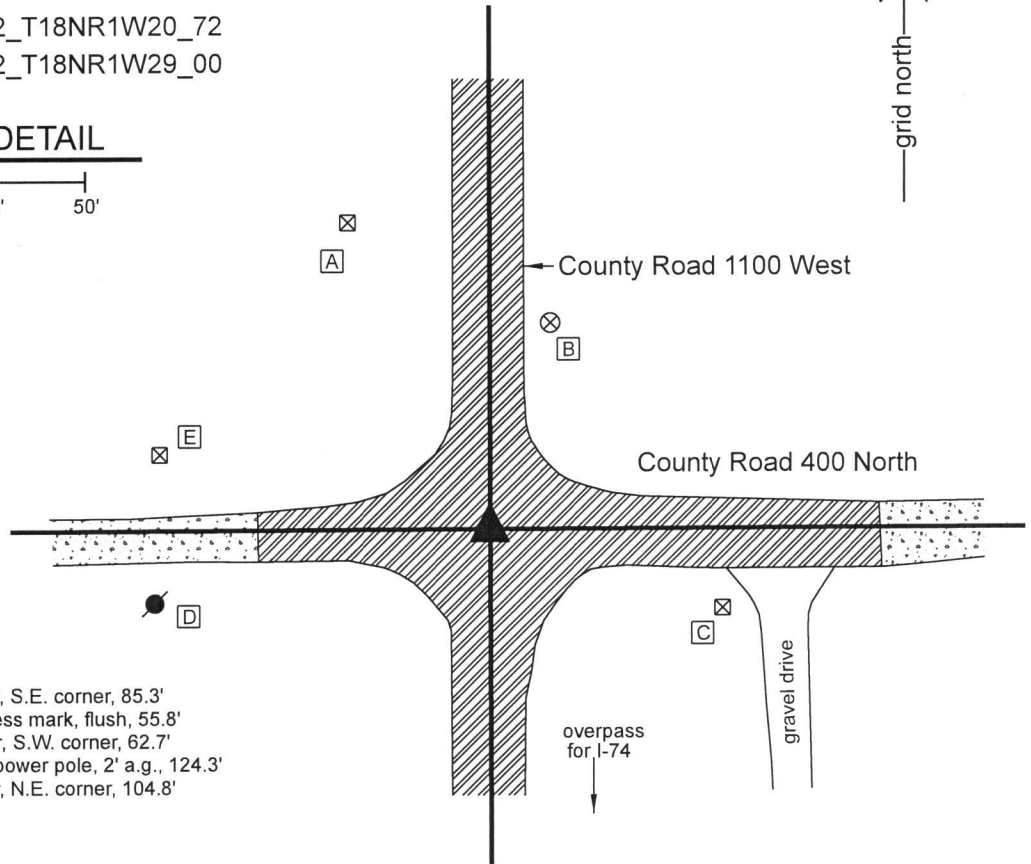
Indiana tie card references:

IN02_T18NR2W19_80 IN02_T18NR1W20_72

IN02_T18NR2W30_08 IN02_T18NR1W29_00

CORNER WITNESS DETAIL

SCALE 1" = 50' 



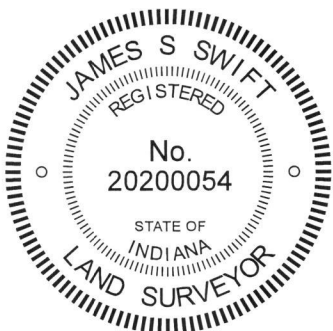
- A - INDOT R/W marker, S.E. corner, 85.3'
- B - Boone County witness mark, flush, 55.8'
- C - INDOT R/W marker, S.W. corner, 62.7'
- D - Mag nail in E. side power pole, 2' a.g., 124.3'
- E - INDOT R/W marker, N.E. corner, 104.8'

The INDOT Type B monument was found in place and held as marking the corner.


A BCS record dated February 28, 1887 states, with respect to this corner, "Took out the two small rocks and put one in 14,17,30 marked +." A BCS record dated September 23, 1912 confirms the presence of the stone called in the earlier record, stating, "Rock 14.17.30 +." A BCS tie card dated March 20, 1969 shows the corner as a "brass pin on monument, State Highway Department."

This corner falls in an area of fill in the approach to the bridge which represents the overpass of County Road 1100 West over Interstate 74. The found monument is an INDOT Type B monument matching the description in the 1969 BCS tie card. The plans for Interstate 74, approved by the Indiana State Highway Commission on March 22, 1963, show the overpass as project 74-2(42)35. The plans do not specifically call for a section corner but show P.O.T 42+53.5 of line S-13-A = P.O.T 50+00 of line S-14-A at the center of the intersection and show the intersecting lines as COUNTY ROAD (gravel) SECTION LINE. The found Type B monument is believed to represent this P.O.T. The corner was not excavated and the found monument was accepted as marking the corner. It is not known if this monument replaced, is above, or at variance with the position the stone called in the 1887 and 1912 BCS records. The monument is believed to be the same monument as is called in the 1969 BCS tie card.

This corner was originally established as a wood post in 1820.




Kenneth E. Hedge, County Surveyor


James S. Swift, IN LS 20200054
March 13, 2019

Jackson Township

Section 19 T18N, R2W	Section 20 T18N, R2W
Section 30 T18N, R2W	Section 29 T18N, R2W

SECTION CORNER RECORD

SW 450-1100

BOONE COUNTY SURVEYOR'S OFFICE

State Plane grid coordinates NAD83 (2011):

North: 1721471.66 East: 3066739.21 (U.S. survey feet)

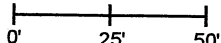
Type of monument: Harrison, 4" disk 'Section Corner'

Depth: six inches below adjacent road surface

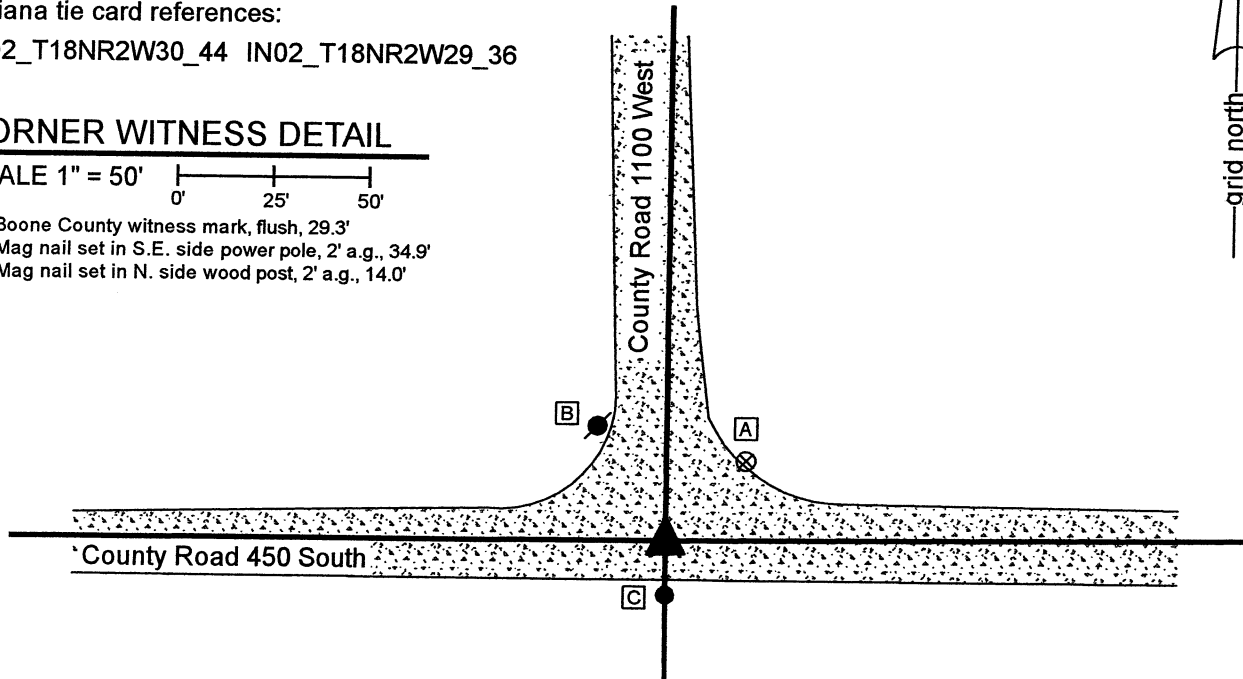
Indiana tie card references:

IN02_T18NR2W30_44 IN02_T18NR2W29_36

CORNER WITNESS DETAIL

SCALE 1" = 50' 

- A - Boone County witness mark, flush, 29.3'
- B - Mag nail set in S.E. side power pole, 2' a.g., 34.9'
- C - Mag nail set in N. side wood post, 2' a.g., 14.0'

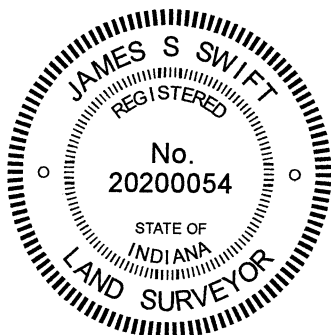


The Harrison monument was set per the best available evidence of the corner.

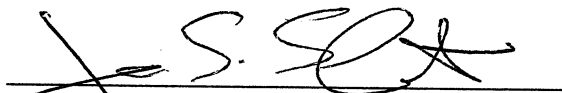
No specific descriptions of this corner were found in the BCS Surveyor's Record beyond the original establishment of the corner as a wood post in 1820. No recent BCS tie cards were found referencing the corner, nor were any surveys recorded in the Office of the Boone County Recorder found.

The plans for Interstate 74, approved by the Indiana State Highway Commission on March 22, 1963 show the overpass of County Road 1100 West over I-74 under project 74-2(42)35. The plans show line S-13-A as being along "County Road (gravel) Section Line." This corner represents the southerly terminus of that section line. As discussed on the documentation for BCS Corner SW 400-1100, certified March 13, 2019, an INDOT Type B monument was found and accepted as marking the station shown as said plans as POT 42+53.5, Line S-13-A. An iron pin was found in the gravel road at the station shown as POT 63+00, Line S-13-A on said plans. The two monuments agree with the plans and align with the center of the road as it crosses over I-74. However, the road bends slightly toward the west in the vicinity of POT 63+00 and the plans make no reference to any monument marking the southerly terminus of the section line, being the subject corner. The plans simply show the gravel road at POT 63+00 and do not show further information to the south.

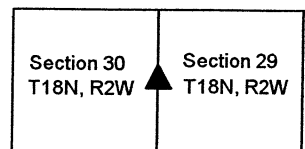
This corner was originally excavated on October 9, 2018. At that time an area 6 feet north-south by 6 feet east-west was excavated to the bottom of the road bed at the intersection of the two gravel roads. No evidence of a stone or other survey marker was found. The road was repaired without setting a monument, pending further investigation. It is noted that the southerly prolongation of line S-13-A, per the found INDOT monuments, falls 2.4 feet east of the local evidence of the corner, in the form of a wood post on the south side of the road and the physical intersection of the two gravel roads. Analysis of accessory evidence to the corner, in the form of occupation lines marking evidence of other aliquot corners and deed lines along County Road 450 South through Section 30 indicates that the local evidence of the corner fits better with the available accessory evidence than with the prolongation of line S-13-A. The evidence of the wood post on the south side of the road and the physical roadways to the north, east and west, was accepted as the best available evidence of the corner. A Harrison monument was set at the center of the intersection of the roads, immediately north of the wood post, on December 4, 2020. No further excavation, beyond the setting of the monument, was performed in 2020, as the intersection had been thoroughly excavated in October, 2018.




 Kenneth E. Hedge, County Surveyor


 James S. Swift, IN LS 20200054
 December 15, 2020

Jackson Township



SECTION CORNER RECORD

SW 500-1000

BOONE COUNTY SURVEYOR'S OFFICE

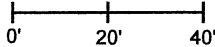
State Plane grid coordinates NAD83 (2011):
North: 1718861.47 East: 3072064.70 (U.S. survey feet)

Type of monument: plug in monument box, INDOT 'Type B'
Depth: Three inches below adjacent road surface

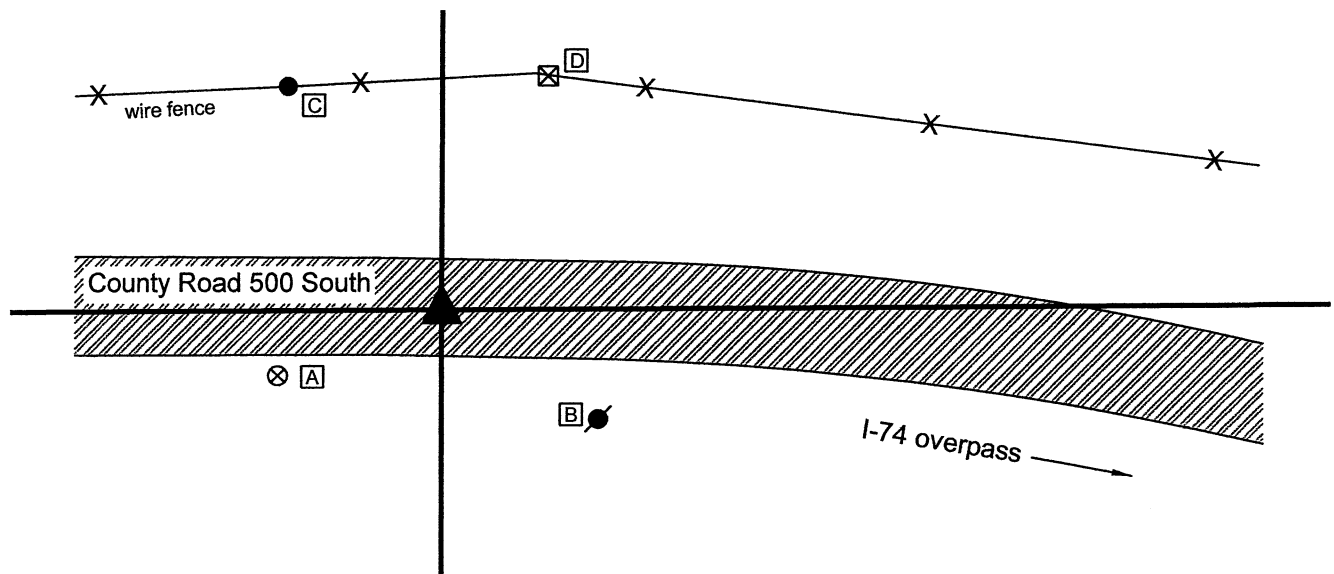
Indiana tie card references:
IN02_T18NR2W28_72 IN02_T18NR2W29_80
IN02_T18NR2W32_08 IN02_T18NR2W33_00

CORNER WITNESS DETAIL

SCALE 1" = 40'

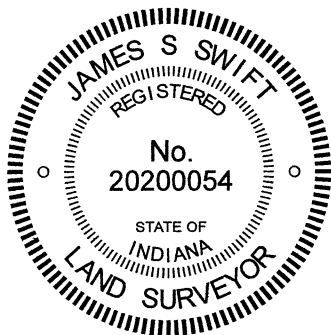


- A - Boone County witness mark, flush, 36.9'
- B - Mag nail set in N. side power pole, 2' a.g., 39.9'
- C - Mag nail set in S. side wood post, 2' a.g., 56.6'
- D - S.W. corner, INDOT ROW marker, flush, 53.4'

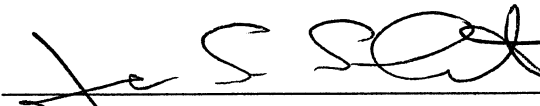


The INDOT Type B Monument was found and held as marking the corner. A BCS record dated April 22, 1870 states, with respect to this corner, "Set Rock 17.16.15 +." No recent BCS tie cards were found referencing the corner. The plans for Interstate 74, as revised February 16, 1974, show the overpass of County Road 500 South over I-74 as project 74-2(33)47. The sheet provided by INDOT is not entirely legible but appears to show the section line crossing County Road 500 South with the label "Monument Required" apparently pointing at the section corner at a point slightly west of a substantial bend in the R/W on the north side of the road. Station data and specifics of the corner are not clear, due to the poor quality of this particular plan sheet. However, it appears that a monument was set to mark the section corner at the time of the construction of the overpass. The position of the found monument appears to agree with the position shown on the plans, though this is not specifically proven due to the lack of legible information. The found monument falls in an area of substantial cut, hence no excavation was performed, due to the fact that any ancient monument such as a stone would have been destroyed when the roadway was cut. It is noted, however, that the found monument agrees remarkably well with the relative positions of adjacent corners. The Type B monument was held as marking the corner.

This corner was originally established as a wood post in 1820.




Kenneth E. Hedge, County Surveyor


James S. Swift, IN LS 20200054
June 16, 2021

Jackson Township

Section 29 T18N, R2W	Section 28 T18N, R2W
Section 32 T18N, R2W	Section 33 T18N, R2W

The diagram shows a 2x2 grid of sections. A black triangle points to the corner between Section 28 and Section 33.

SECTION CORNER RECORD

SW 500-1050

BOONE COUNTY SURVEYOR'S OFFICE

State Plane grid coordinates NAD83 (2011):

North: 1718848.70 East: 3069418.16 (U.S. survey feet)

Type of monument: Harrison, 4" disk 'Section Corner'

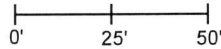
Depth: One inch below adjacent road surface

Indiana tie card references:

IN02_T18NR2W29_76 IN02_T18NR2W32_04

CORNER WITNESS DETAIL

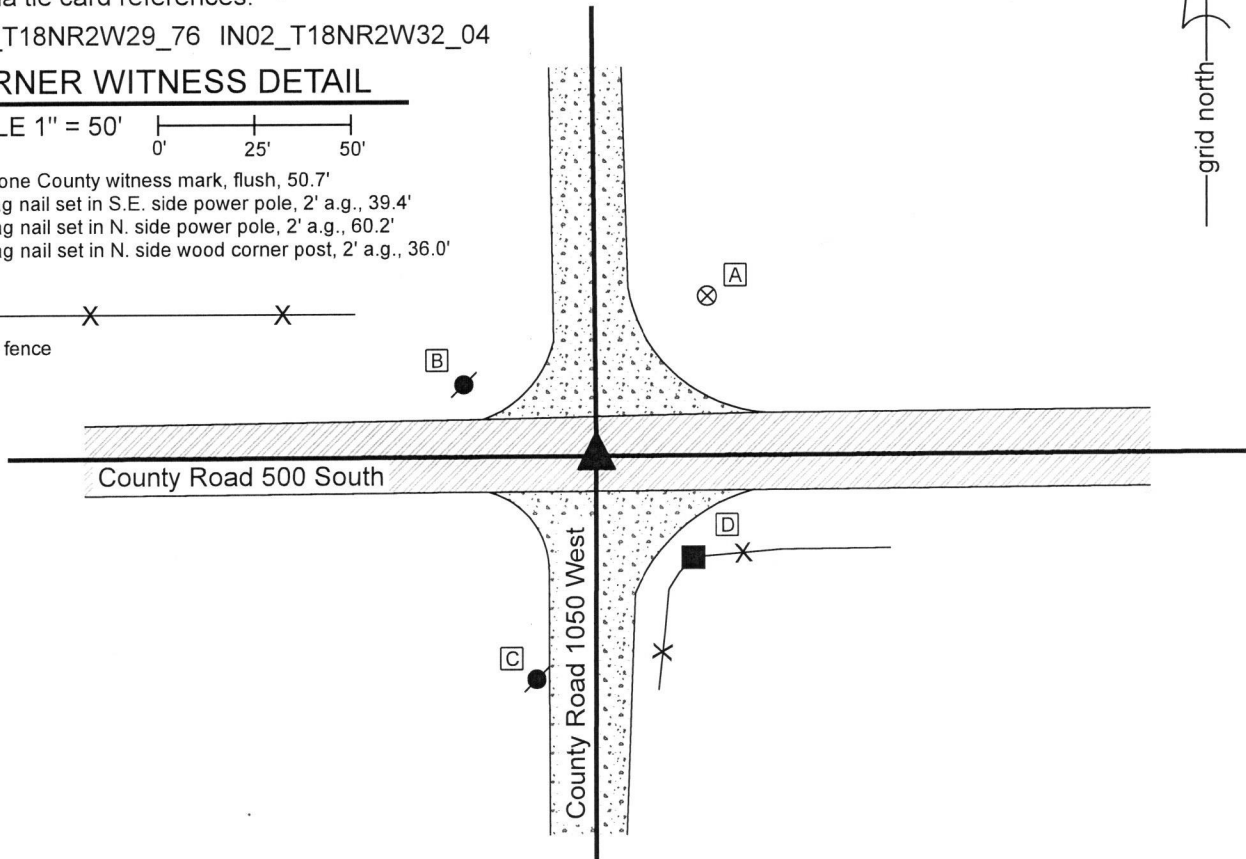
SCALE 1" = 50'



- A - Boone County witness mark, flush, 50.7'
- B - Mag nail set in S.E. side power pole, 2' a.g., 39.4'
- C - Mag nail set in N. side power pole, 2' a.g., 60.2'
- D - Mag nail set in N. side wood corner post, 2' a.g., 36.0'



- Wire fence



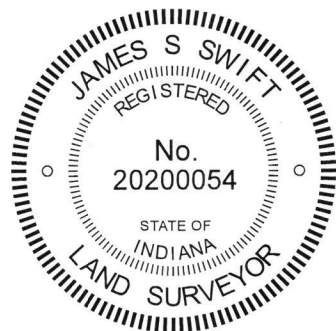
The Harrison monument was set in place of a rebar found.

A BCS record dated April 22, 1870 states, with respect to this corner, "Rock that was set. We marked +." A BCS tie card dated January 18, 1994 shows the corner as a railroad spike.

This corner was excavated on October 24, 2019. Prior to excavation, a 1/2 inch diameter rebar was found at 4 inches deep at the center of the intersection of the two county roads. Excavation of an area extending 2.5 feet north, 2.5 feet south, 4 feet east and 2.5 feet west of the rebar revealed no further evidence of the corner. The bottom of the road bed was found at 16 inches deep. Excavation was performed to approximately 20 inches deep. Neither the stone called in the 1870 record nor the railroad spike called in 1994 record were found. The position of the found rebar fits well with local evidence in the form of the centers of the existing roadways and fits well with the relative positions of proximate corners.

The rebar was accepted as the best available evidence of the corner and was held as marking the corner. The rebar was removed and replaced with a Harrison monument in the same position.

This corner was originally established in 1820.



Kenneth E. Hedge
Kenneth E. Hedge, County Surveyor

James S. Swift
James S. Swift, IN LS 20200054
December 3, 2019

Jackson
Township

Section 29
T18N, R2W

Section 32
T18N, R2W

SECTION CORNER RECORD

SW 500-1100

BOONE COUNTY SURVEYOR'S OFFICE

State Plane grid coordinates NAD83 (2011):

North: 1718840.52 East: 3066755.32 (U.S. survey feet)

Type of monument: Harrison, 4" disk 'Section Corner'

Depth: One inch below adjacent road surface

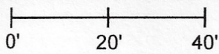
Indiana tie card references:

IN02_T18NR2W29_72 IN02_T18NR2W30_80

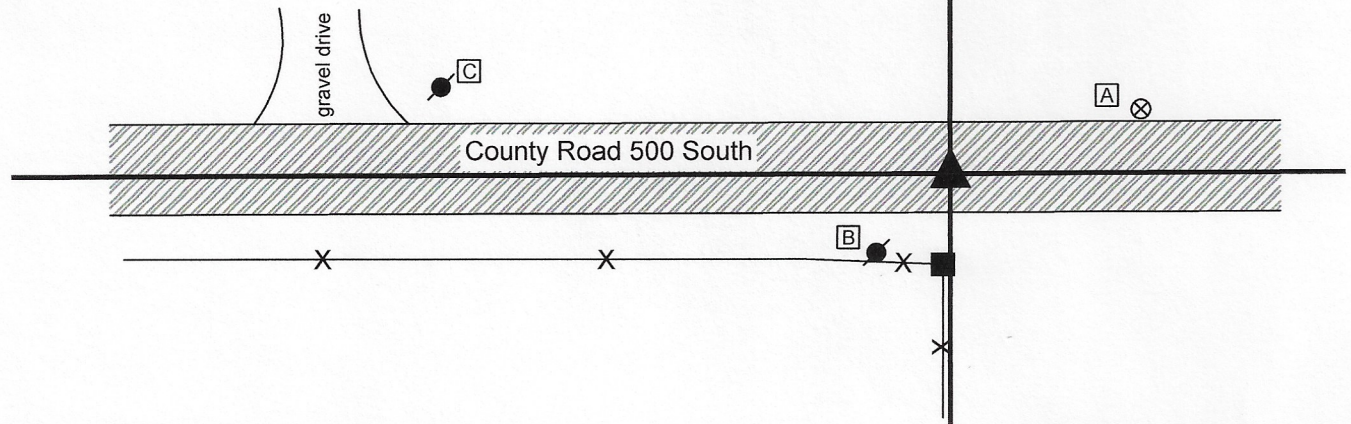
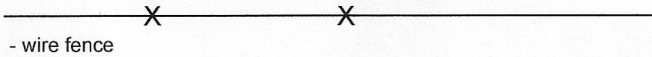
IN02_T18NR2W31_08 IN02_T18NR2W32_00

CORNER WITNESS DETAIL

SCALE 1" = 40'



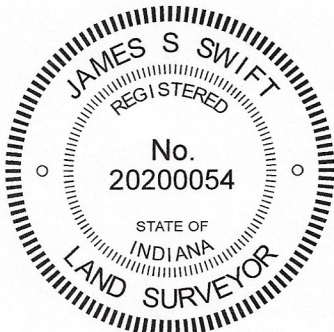
- A - Boone County witness mark, flush, 41.5'
- B - Mag nail set in N. side power pole, 2' a.g., 22.4'
- C - Mag nail set in E. side power pole, 2' a.g., 106.9'



The Harrison monument was set in place of a stone found.

A BCS record of September 19, 1895 states, with respect to this corner, "Set Rock 24x12x8." No recent BCS tie cards were found referencing this corner.

Excavation was performed at this corner on October 21, 2020. Prior to excavation, a rebar was found at the surface of the road, generally in-line with a fence to the south. Excavation revealed a stone found at 3 inches deep, slightly southeast of the found rebar. The stone appeared to be vertical but was broken as found, being in several pieces. The top of the stone had been embedded in the pavement layer of the road and most of the stone was in the fill material of the road bed. The stone was removed, measured, and found to be 12 inches north-south by 8 inches east-west by 15 inches tall. The bottom four inches of the stone had been embedded in the clay layer below the road bed. The stone matched two of the record dimensions but not the third. As noted above, the stone was broken as found. It is possible that a significant portion of the top of the rock had been broken previously, accounting for the fact that it was 15 inches tall, not 24 inches, per the 1895 record. The stone was held as marking the corner. A Harrison monument was set in place of the top, center of the stone as found. Both the stone and rebar were removed during excavation. The rebar had been 0.6 foot north and 1.2 foot west of the top, center of the stone.



Kenneth E. Hedge
Kenneth E. Hedge, County Surveyor

James S. Swift
James S. Swift, IN LS 20200054
October 28, 2020

Jackson Township

Section 30 T18N, R2W	Section 29 T18N, R2W
Section 31 T18N, R2W	Section 32 T18N, R2W