

# SECTION CORNER RECORD

## BOONE COUNTY SURVEYOR'S OFFICE

SE 400-700

State Plane grid coordinates NAD83 (2011):  
 North: 1725318.22 East: 3162053.90 (U.S. survey feet)

Type of monument: Harrison, 4" disk 'Section Corner'  
 Depth: Flush with adjacent ground

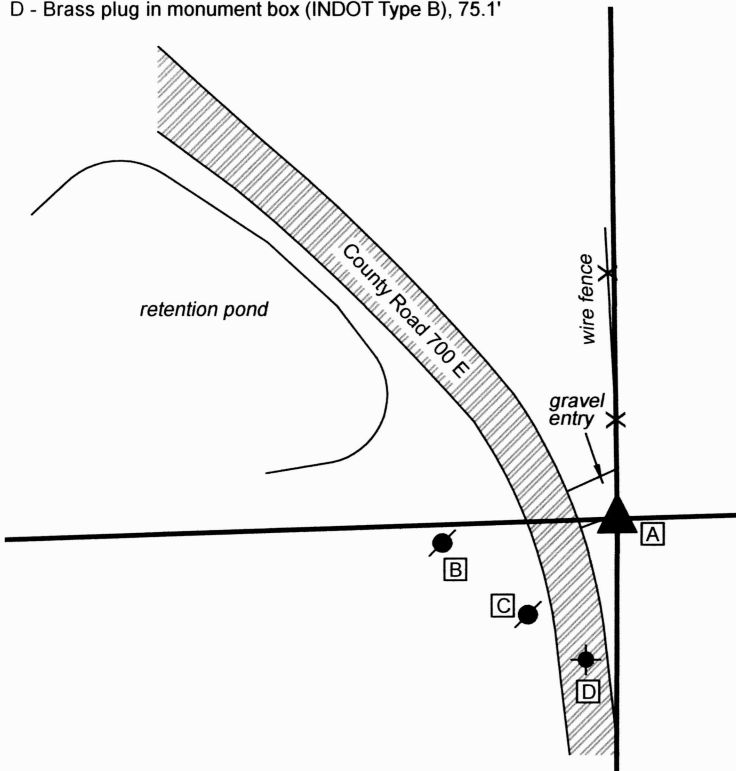
Indiana tie card references:  
 IN02\_T18NR2E19\_80 IN02\_T18NR2E20\_72  
 IN02\_T18NR2E30\_08 IN02\_T18NR2E29\_00



### CORNER WITNESS DETAIL

SCALE 1" = 100'

- A - W. edge right-of-way monument, 1.05'
- B - Mag nail set in S.E. side power pole, 2' a.g., 91.8'
- C - Mag nail set in E. side power pole, 2' a.g., 68.1'
- D - Brass plug in monument box (INDOT Type B), 75.1'

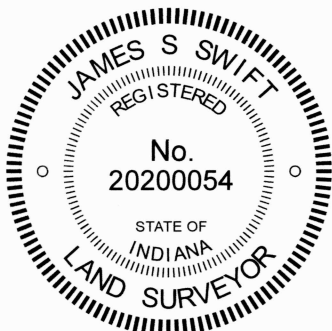


The Harrison monument was set in place of a rebar found in 2009. Since that time, the orientation of the adjacent road has been altered and the depiction shown hereon represents the current situation at the corner, with new reference ties. The monument has not been changed or moved.

A summary of the explanation included on the July 14, 2010 record sheet is as follows:  
 A BCS record of 1866 states "ReEstablished Set a Rock 28.20.20 marked + on top."  
 No recent BCS tie cards were found for this corner. This corner was excavated on September 10, 2009. Prior to excavation, two monuments were visible: a Harrison monument and a 5/8 inch rebar bearing a plastic cap stamped "Section Corner." The two monuments were adjacent, with the Harrison immediately east of the rebar. No documentation was found for these monuments. Excavation revealed another rebar found at 18 inches deep which was against a smooth iron pin at the same depth. The smooth iron pin appears to be an old grounding rod for a telephone pole. It was anchored so firmly and deeply that an excavator was not able to pull it. The top several feet of the rod were broken off and the remainder was left in place. The record stone was not found, though the area was excavated extensively. The various found monuments were all located within one horizontal foot of each other.

The 2010 record sheet documenting the excavation from 2009 discusses, in detail, the geometry of the area and potential uncertainties associated with the position of the corner. Since that time, the Harrison monument set in 2009 has been held for extensive development to the west. The 2010 record sheet concludes by noting that the the lower rebar, found adjacent to the smooth iron pin, was held as the specific location for the corner. The previously existing Harrison monument had been 0.3 of a foot south of this and the capped rebar was the same amount south and also 0.4 of a foot west.

This corner was originally established as a wood post in July, 1821.



*Carol Cunningham*  
 Carol Cunningham, County Surveyor

*James S. Swift*  
 James S. Swift, IN LS 20200054  
 March 29, 2024

Worth Township

Section 19 T18N, R2E	Section 20 T18N, R2E
Section 30 T18N, R2E	Section 29 T18N, R2E

# SECTION CORNER RECORD

# SE 400-750

## BOONE COUNTY SURVEYOR'S OFFICE

State Plane grid coordinates NAD83 (NSRS 2007):

North: 1725393.91 East: 3164686.28 (U.S. survey feet)

Type of monument: Harrison, 4" disk 'Section Corner'

Depth: Flush with ground

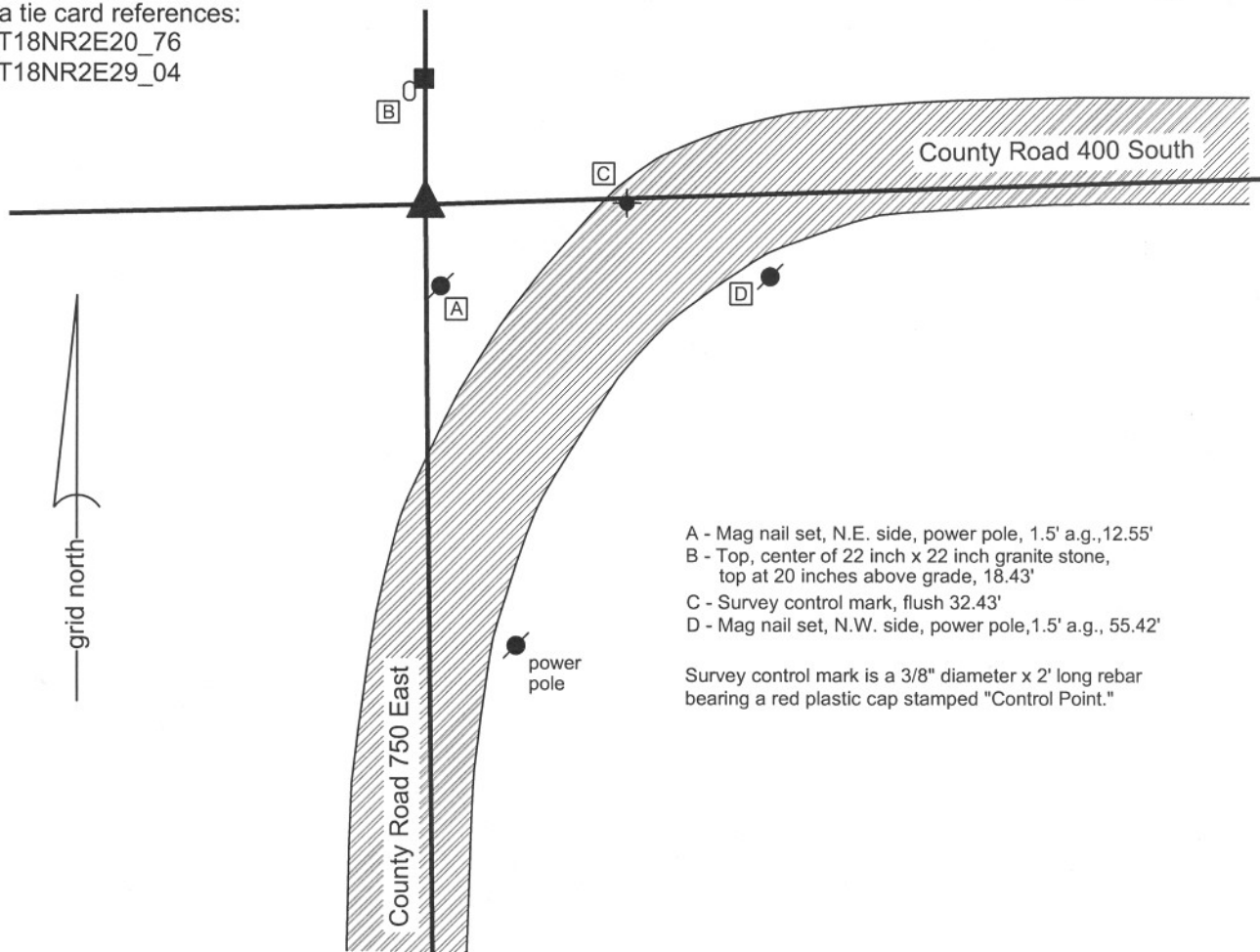
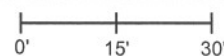
Indiana tie card references:

IN02\_T18NR2E20\_76

IN02\_T18NR2E29\_04

### CORNER WITNESS DETAIL

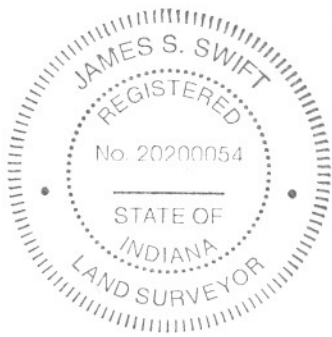
SCALE 1" = 30'



- A - Mag nail set, N.E. side, power pole, 1.5' a.g., 12.55'
- B - Top, center of 22 inch x 22 inch granite stone, top at 20 inches above grade, 18.43'
- C - Survey control mark, flush 32.43'
- D - Mag nail set, N.W. side, power pole, 1.5' a.g., 55.42'

Survey control mark is a 3/8" diameter x 2' long rebar bearing a red plastic cap stamped "Control Point."

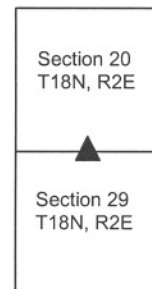
The Harrison monument was set over the top center of a stone found and accepted as marking the corner. The stone matches the description in a previous BCS record dated November 23 - 25, 1865: "Re-established from Beech found old stake also. Set Rock 22.18 by 12. + on N. side and mark across top. Hickory stake under it." The "+" is clearly visible on the north side and the stone is 12 inches (N-S) by 18 inches (E-W). The stone was not excavated to the full 22 inch depth, nor was the hickory stake excavated, in order to preserve the stable position of the stone. The top of the stone is approximately 20 inches below grade. A 2 foot long piece of 24 inch diameter plastic tile was set over and around the stone. This tile was filled with gravel, except for a 10 inch by 18 inch column of concrete in which the Harrison monument was set. The top 3 inches of the interior of the tile was filled with concrete. A 5/8 inch rebar which has been held on the corner by some previous surveys was found 2.52 feet N and 0.28 feet W of the top, center of the stone. The rebar was removed during excavation. This corner was originally established in July, 1821.



*Kenneth E. Hedge*  
 Kenneth E. Hedge, County Surveyor

*James S. Swift*  
 James S. Swift, IN LS 20200054  
 January 30, 2008

Worth Township



PHOTOGRAPHIC DOCUMENTATION

Date of photography: 11/28/2007

View of stone from above and slightly west of north. The etched "+" is visible on the north side of the stone. The top of the stone is approximately 20 inches below grade and matches the record description of 22 by 18 by 12, + on the north side.



Same picture as above, with etched "+" enhanced for ease of visual detection.



View of stone from above after 2-foot diameter plastic tile was placed around it. Photo is oriented with the flat, north side towards the bottom of the page. The Harrison monument was set over the midpoint of the top of the stone, south of the etched "+".



# SECTION CORNER RECORD

SE 400-800

## BOONE COUNTY SURVEYOR'S OFFICE

State Plane grid coordinates NAD83 (NSRS 2007):

North: 1725475.91 East: 3167346.25 (U.S. survey feet)

Type of monument: Harrison, 4" disk 'Section Corner'

Depth: One inch below road surface

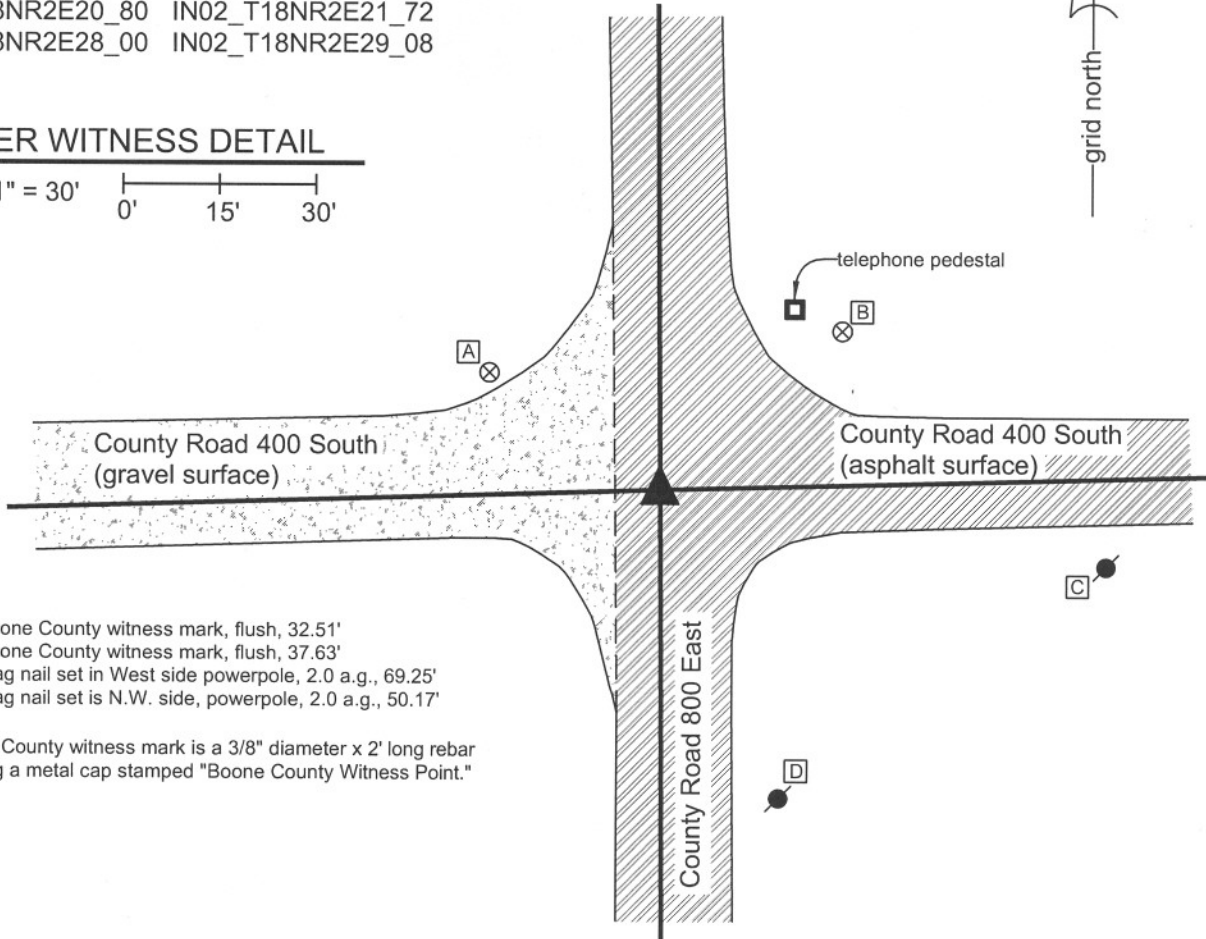
Indiana tie card references:

IN02\_T18NR2E20\_80 IN02\_T18NR2E21\_72

IN02\_T18NR2E28\_00 IN02\_T18NR2E29\_08

### CORNER WITNESS DETAIL

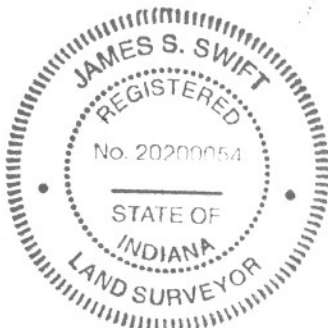
SCALE 1" = 30'  
 0' 15' 30'



- A - Boone County witness mark, flush, 32.51'
- B - Boone County witness mark, flush, 37.63'
- C - Mag nail set in West side powerpole, 2.0 a.g., 69.25'
- D - Mag nail set is N.W. side, powerpole, 2.0 a.g., 50.17'

Boone County witness mark is a 3/8" diameter x 2' long rebar bearing a metal cap stamped "Boone County Witness Point."

The Harrison monument was set directly over the top of a stone found and accepted as marking the corner. The stone was exposed and the Harrison monument set on November 13, 2007. The stone matches the description from a BCS record of November 23 - 25, 1865: "Re-established from trees and old stake. Set rock 24.14 by 4 marked + on W. side and four small rocks around it." The top of the stone is 27 inches deep, firmly established in the clay sub-base and the "+" on the west side is clearly visible. A smaller stone was found at 12 inches deep, directly above the record stone. The smaller stone was within the gravel layer of the road and appears to have been set as a witness to the deeper, record stone. A railroad rail set on end was found 1.7' North and 1.8' East of the stone. A BCS tie card dated April 15, 1968 states "no stone found" and demonstrates a location for the corner but does not state what monument was set. It is likely that the railroad rail was set at this time. The rail has been held as the corner for surveys subsequent to 1968 but is clearly not the best evidence of the location of the original corner. The rail and the small witness stone were removed during excavation and the record stone was left in place. This corner was originally established in July, 1821.



*Kenneth E. Hedge*  
 Kenneth E. Hedge, County Surveyor

*J. S. Swift*  
 James S. Swift, IN LS 20200054  
 January 2, 2008

Worth Township	Eagle Township
Section 20 T18N, R2E	Section 21 T18N, R2E
Section 29 T18N, R2E	Section 28 T18N, R2E



PHOTOGRAPHIC DOCUMENTATION

Date of photography: 11/13/2007

Photograph of record stone, set 11/23-11/25, 1865. Photo is taken from above, slightly to West.



Close-up of record stone, taken from above, showing west side of the top of the stone. The etched "+" is clearly visible on the west side, centered at 4 inches from top of stone. The stone was exposed to 9 inches below the top, at which point it was approximately 8 inches wide by 4 inches thick and completely stable in position. One of the "four small rocks around it" was found on the east side. The other surrounding rocks were not exposed. The stone was not further exposed in order to preserve the stability of its position.



Photograph taken from Northeast, showing area of excavation as it is being re-filled with gravel. The main hole is 4 feet by 4 feet centered on the railroad rail (see notes, other sheet). Record stone was found in bottom of the offset square in the S.W. corner of the main hole. The small witness stone found above the record stone is shown along with several small rocks on pavement at the top right corner of the photograph.



Record stone at bottom of hole

# SECTION CORNER RECORD

SE 450-700

## BOONE COUNTY SURVEYOR'S OFFICE

State Plane grid coordinates NAD83 (NSRS 2007):

North: 1722674.81 East: 3162052.28 (U.S. survey feet)

Type of monument: Harrison, 4" disk 'Section Corner'

Depth: Flush with surface

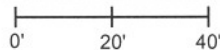
Indiana tie card references:

IN02\_T18NR2E29\_36

IN02\_T18NR2E30\_44

### CORNER WITNESS DETAIL

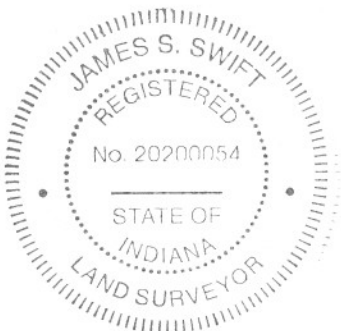
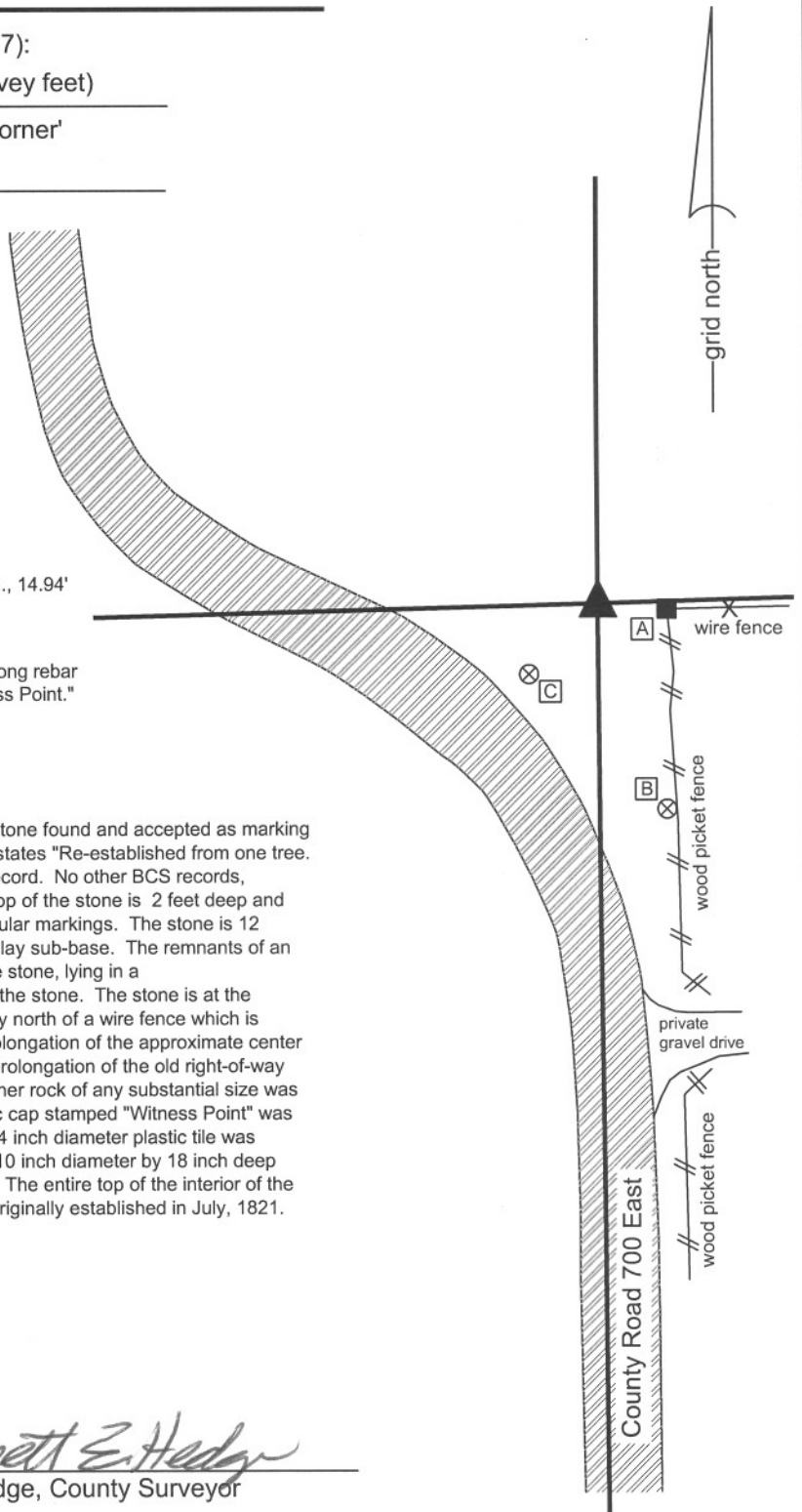
SCALE 1" = 40'



- A - Mag nail set in W side, wood corner post, 1.5 a.g., 14.94'
- B - Boone County witness mark, flush 46.28'
- C - Boone County witness mark, flush 21.07'

Boone County witness mark is a 3/8" diameter x 2' long rebar bearing a metal cap stamped "Boone County Witness Point."

The Harrison monument was set over the top, center of a stone found and accepted as marking the corner. A previous BCS record dated March 15, 1868 states "Re-established from one tree. Set a rock." No description of the rock was given in this record. No other BCS records, beyond the original notes, are known for this corner. The top of the stone is 2 feet deep and measures 9 inches (N-S) by 12 inches (E-W) with no particular markings. The stone is 12 inches vertical, with the bottom half fully embedded in the clay sub-base. The remnants of an old cedar brace for a post were found south and east of the stone, lying in a southeasterly/northwesterly orientation, pointing directly at the stone. The stone is at the westerly extension of an old tree line to the east and slightly north of a wire fence which is south of the tree line. The stone is also at the northerly prolongation of the approximate center of County Road 700 East, and 1 rod west of the northerly prolongation of the old right-of-way fence along the east side of County Road 700 East. No other rock of any substantial size was found in this vicinity. A 5/8 inch rebar bearing a red plastic cap stamped "Witness Point" was found 0.84' S and 2.89' W of the stone. A 2 foot length of 24 inch diameter plastic tile was placed above the stone and filled with gravel, except for a 10 inch diameter by 18 inch deep core of concrete in which the Harrison monument was set. The entire top of the interior of the tile was filled with 3 inches of concrete. This corner was originally established in July, 1821.



*Kenneth E. Hedge*  
Kenneth E. Hedge, County Surveyor

*J. S. Swift*  
James S. Swift, IN LS 20200054  
January 30, 2008

Worth Township

Section 30 T18N, R2E	▲	Section 29 T18N, R2E
-------------------------	---	-------------------------



## PHOTOGRAPHIC DOCUMENTATION

Date of photography: 11/28/2007

Photograph of stone found, taken from west, showing picket fence to the east. The stone is approximately 2 feet deep, slightly north of the westerly extension of a east-west wire fence which terminates on the north end of the picket fence. The stone is in-line with the old east-west tree line, north of the wire fence.



Photo of the stone from above, after 2 foot diameter plastic tile was placed around it. The Harrison monument was set over the midpoint of the top of the stone, within the plastic tile. The top of the Harrison monument is flush with the top of the tile and surrounding ground.



# SECTION CORNER RECORD

SE 450-800

## BOONE COUNTY SURVEYOR'S OFFICE

State Plane grid coordinates NAD83 (NSRS 2007):

North: 1722829.92 East: 3167363.72 (U.S. survey feet)

Type of monument: Harrison, 4" disk 'Section Corner'

Depth: 0.1' below adjacent road surface

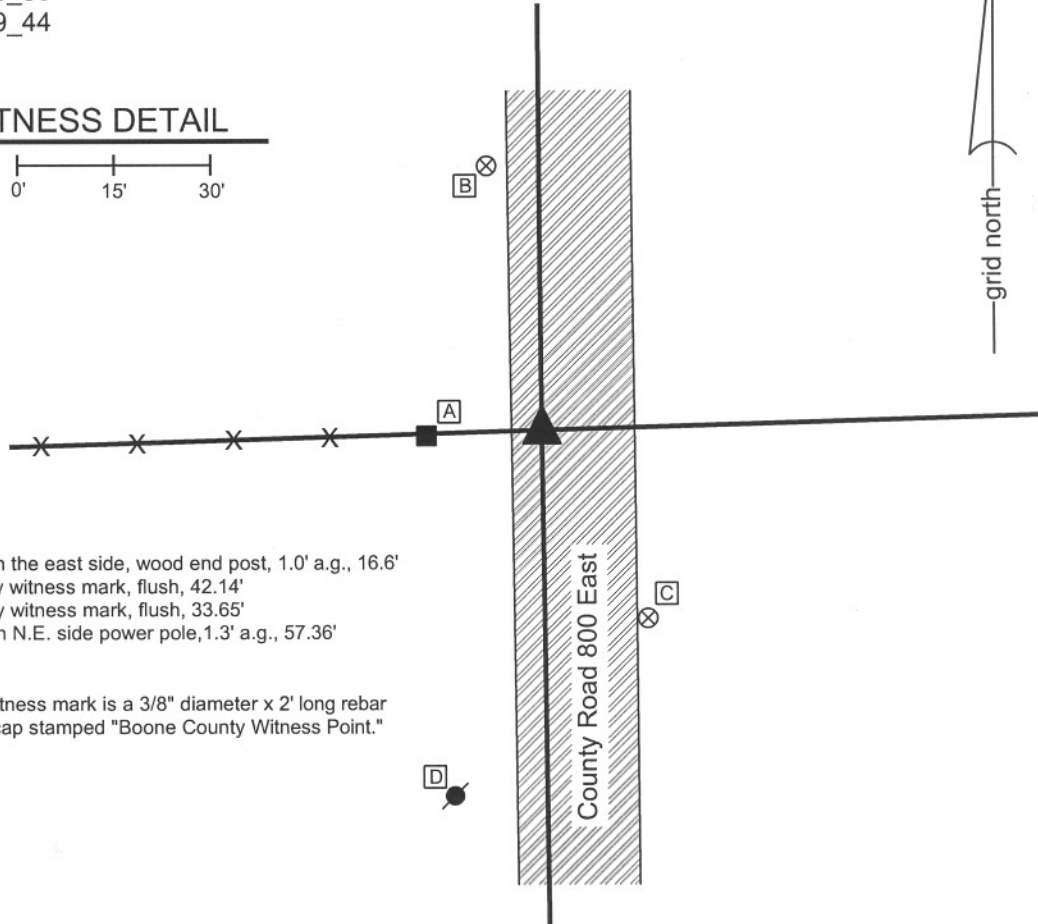
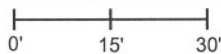
Indiana tie card references:

IN02\_T18NR2E28\_36

IN02\_T18NR2E29\_44

### CORNER WITNESS DETAIL

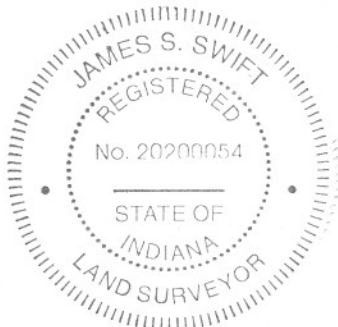
SCALE 1" = 30'



- A - Mag nail set in the east side, wood end post, 1.0' a.g., 16.6'
- B - Boone County witness mark, flush, 42.14'
- C - Boone County witness mark, flush, 33.65'
- D - Mag nail set in N.E. side power pole, 1.3' a.g., 57.36'

Boone County witness mark is a 3/8" diameter x 2' long rebar bearing a metal cap stamped "Boone County Witness Point."

The Harrison monument was set in place of a stone found and accepted as marking the corner. The stone was excavated and the Harrison monument set on November 14, 2007. The stone matches the description from a BCS record of November 23-25, 1865: "Re-established from one tree. Set Rock 18.12 by 7 marked + on West side." Minimal gravel and chip-and-seal asphalt cover the clay subbase of the road in this vicinity. The base of the stone was clearly in the clay sub-base, but with such minimal road surface, the stone was shallow and had been pushed over, with the top broken off. The two pieces of the broken stone combine to match the record dimensions and the "+" is clearly visible. Upon initial discovery the "+" was facing partially down into the clay due to the previous disturbance of the stone, though it was apparent that the "+" had been on the west side when the stone was upright. The stone was removed and the Harrison monument was set in the position where the base of the stone was embedded in the clay sub-base. A 5/8 inch rebar which has been held for previous private surveys in the vicinity, but for which no previous BCS record exists, was found 3.63 feet east and 0.44 feet south of the corner. The rebar was removed during excavation. This corner was originally established in July, 1821.



*Kenneth E. Hedge*  
 Kenneth E. Hedge, County Surveyor

*J. S. Swift*  
 James S. Swift, IN LS 20200054  
 January 2, 2008

Worth Township	Eagle Township
Section 29 T18N, R2E	Section 28 T18N, R2E



## PHOTOGRAPHIC DOCUMENTATION

Date of photography: 11/14/2007

Photograph of the record stone, set 11/23-11/25, 1865, as it was originally exposed. Photo is taken from the south.



Photograph of the record stone, lifted to show etched "+" on west side. Photo is taken from the west. The stone had apparently been hit, the top broken off, and pushed over onto the west side. The dimensions of the stone match the record description. The stone was removed and the Harrison set over the position where the bottom of the stone was embedded in clay. The broken-off portion of the top is not shown in this photograph. The stone is on display in the Boone County Surveyor's Office.



# SECTION CORNER RECORD

## BOONE COUNTY SURVEYOR'S OFFICE

SE 500-700

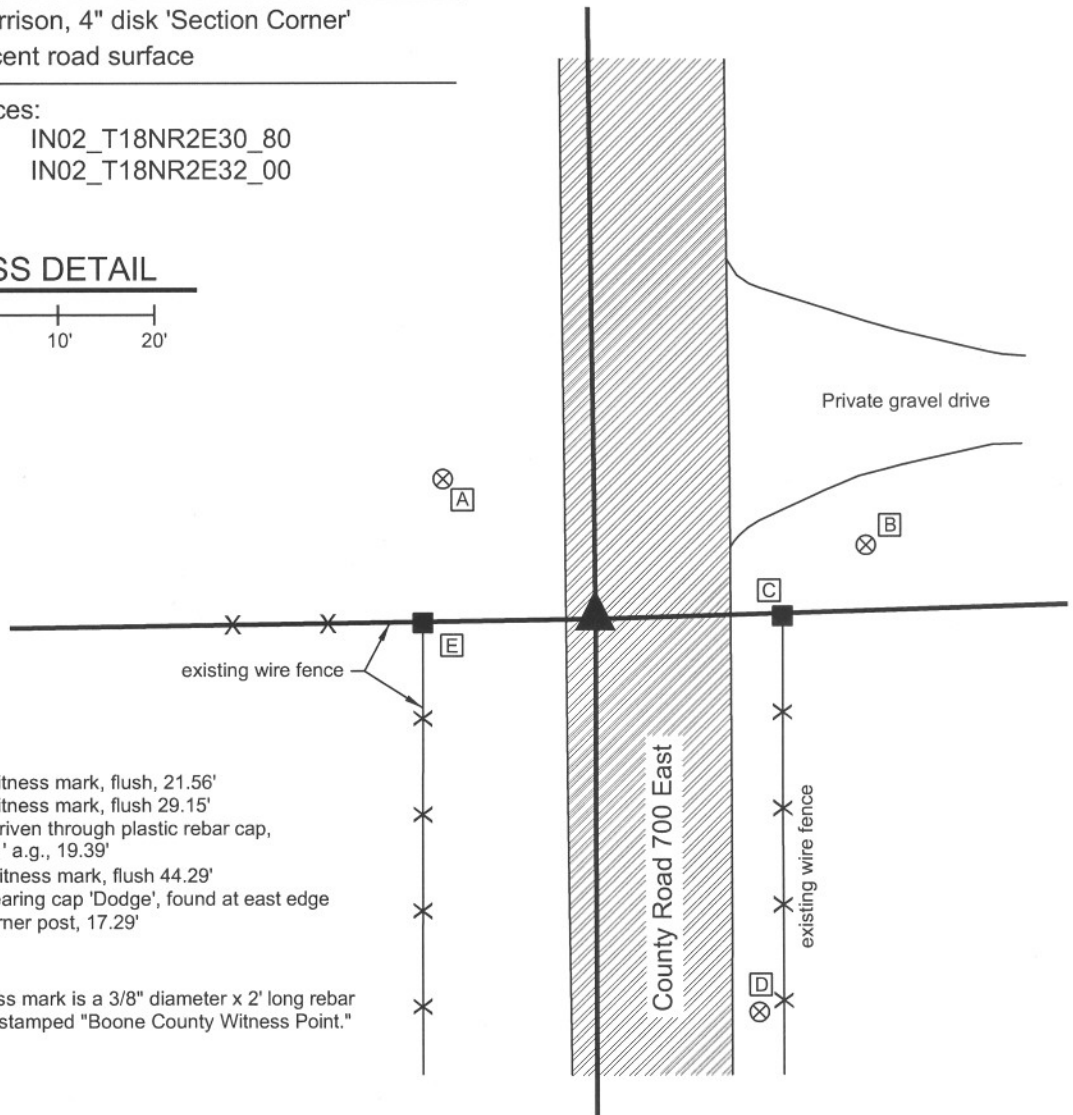
State Plane grid coordinates NAD83 (NSRS 2007):  
 North: 1720034.42 East: 3162077.73 (U.S. survey feet)

Type of monument: Harrison, 4" disk 'Section Corner'  
 Depth: 0.1' below adjacent road surface

Indiana tie card references:  
 IN02\_T18NR2E29\_72 IN02\_T18NR2E30\_80  
 IN02\_T18NR2E31\_08 IN02\_T18NR2E32\_00

### CORNER WITNESS DETAIL

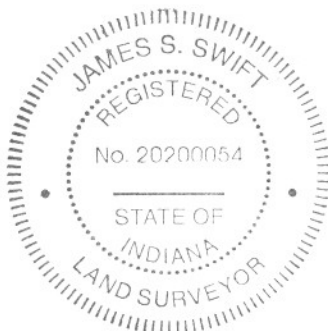
SCALE 1" = 20'  
 0' 10' 20'



- A - Boone County witness mark, flush, 21.56'
- B - Boone County witness mark, flush 29.15'
- C - Mag nail found driven through plastic rebar cap, W. side post, 1.1' a.g., 19.39'
- D - Boone County witness mark, flush 44.29'
- E - 5/8 inch rebar bearing cap 'Dodge', found at east edge base of wood corner post, 17.29'

Boone County witness mark is a 3/8" diameter x 2' long rebar bearing a metal cap stamped "Boone County Witness Point."

The Harrison monument was set in place of a 5/8 inch rebar found and accepted as marking the corner. A previous BCS record dated August 19, 1903 states "Established corner by intersecting lines. Set rock 18x12x12 +. Cedar post 12x12 N8°W 19 links." A 3 foot wide (N-S) by 12 foot long (E-W) hole was excavated to the clay sub-base. The hole was centered N-S on the existing fence end posts on the east and west sides of the road and extended from the west edge of the pavement to across the physical centerline. The stone was not found in this area of excavation. The found 5/8 inch rebar was near the west edge of the road, approximately 0.1 below grade and visible within a small hole. Another rebar, bearing the cap "Witness point" was found 1 foot east of the visible rebar. Recent recorded surveys have held the visible, non-capped rebar. The Harrison monument was set in place of this rebar. Both rebars were removed during excavation. This corner was originally established in July, 1821.



*Kenneth E. Hedge*  
 Kenneth E. Hedge, County Surveyor

*James S. Swift*  
 James S. Swift, IN LS 20200054  
 January 30, 2008

Worth Township

Eagle Township

Section 30 T18N, R2E	Section 29 T18N, R2E
Section 31 T18N, R2E	Section 32 T18N, R2E

# SECTION CORNER RECORD

SE 500-750

## BOONE COUNTY SURVEYOR'S OFFICE

State Plane grid coordinates NAD83 (NSRS 2007):

North: 1720112.7 East: 3164738.4 (U.S. survey feet)

Type of monument: Wood corner post with mag nail set in S. edge

Depth: Mag nail on post is at 5 inches above ground.

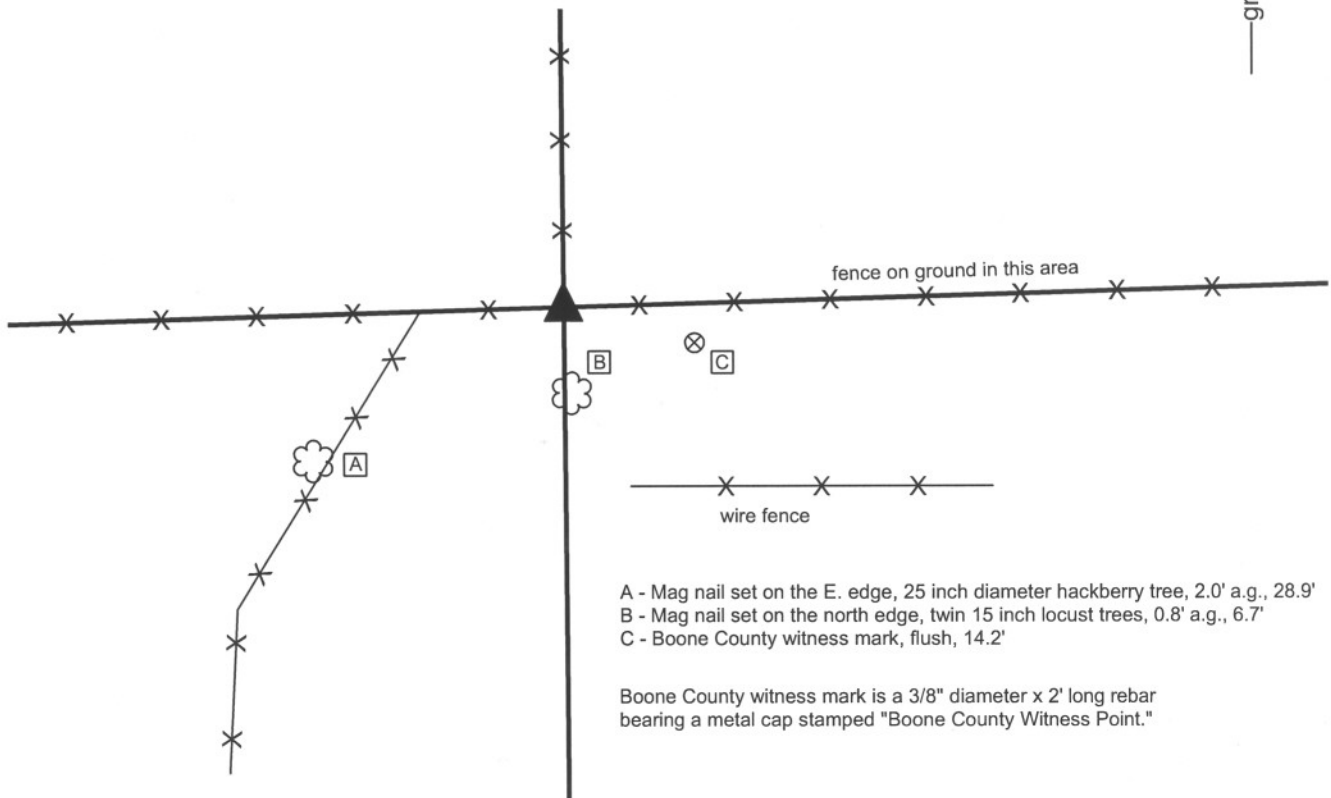
Indiana tie card references:

IN02\_T18NR2E29\_76

IN02\_T18NR2E32\_04

### CORNER WITNESS DETAIL

SCALE 1" = 20'

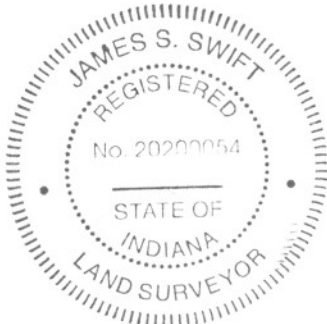


- A - Mag nail set on the E. edge, 25 inch diameter hackberry tree, 2.0' a.g., 28.9'
- B - Mag nail set on the north edge, twin 15 inch locust trees, 0.8' a.g., 6.7'
- C - Boone County witness mark, flush, 14.2'

Boone County witness mark is a 3/8" diameter x 2' long rebar bearing a metal cap stamped "Boone County Witness Point."

The wood post was found in place.

A BCS record of August 19, 1902 mentions this corner several times. The record does not describe what object was set or found at the corner, but shows measurements from this corner to several other corners to the east, west and south. The measurements reported on this record indicate that the corner was half-way between the section corners to the west and east, presumably on the same line, though not specifically documented as such. No recent BCS tie cards were found for this corner. An old wood post at the intersection of fences to the north, east and west exists at a point very close to the midpoint of the line connecting the section corners to the east and west. No stones which had the characteristics of section corner stones were found around the wood post. The post was held as the best available evidence of the corner. As the fences attached to the post are still standing, the post was left in place. A mag nail with a washer stamped "Boone County Surveyor" was set on the south side of the post. As the post leans slightly to the north, this nail is positioned roughly over the base of the post in the ground. The coordinates shown above represent the position of the mag nail. This corner was originally established as a wood post in July, 1821.



*Kenneth E. Hedge*  
 Kenneth E. Hedge, County Surveyor

*James S. Swift*  
 James S. Swift, IN LS 20200054  
 July 14, 2010

Worth Twp

Section 29  
T18N, R2E

Eagle Twp

▲  
 Section 32  
 T18N, R2E



# SECTION CORNER RECORD

SE 500-800

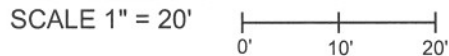
## BOONE COUNTY SURVEYOR'S OFFICE

State Plane grid coordinates NAD83 (NSRS 2007):  
 North: 1720188.49 East: 3167398.38 (U.S. survey feet)

Type of monument: Harrison, 4" disk 'Section Corner'  
 Depth: 0.1' below adjacent road surface

Indiana tie card references:  
 IN02\_T18NR2E28\_72      IN02\_T18NR2E29\_80  
 IN02\_T18NR2E32\_08      IN02\_T18NR2E33\_00

### CORNER WITNESS DETAIL

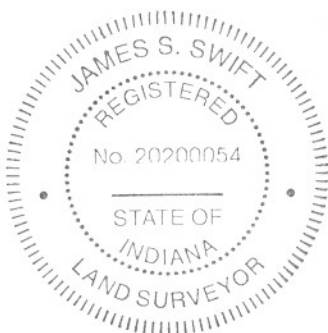
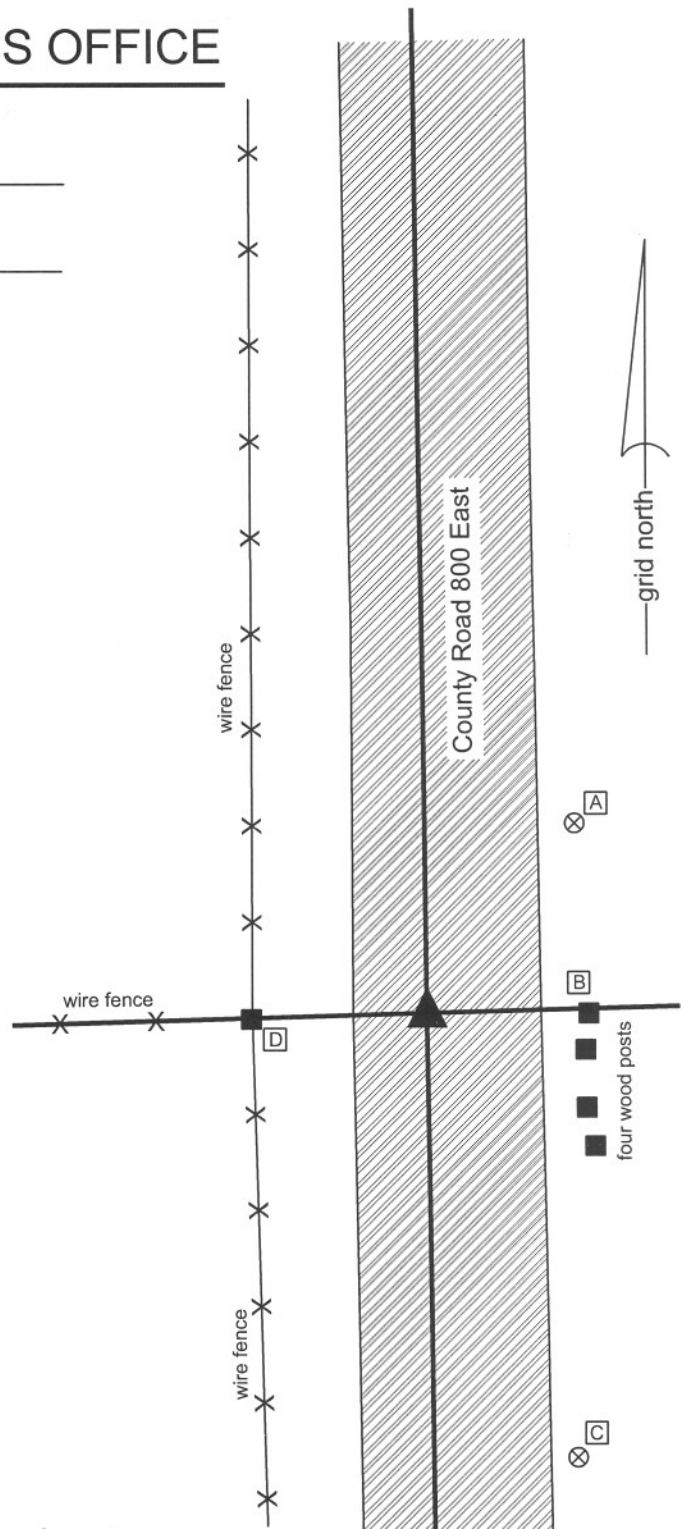


- A - Boone County witness mark, flush, 25.02'
- B - Mag nail found in N. side post, 0.5' a.g., 17.00'
- C - Boone County witness mark, flush 48.85'
- D - Mag nail found in S.E. side post, 1.3' a.g., 18.09'

Boone County witness mark is a 3/8" diameter x 2' long rebar bearing a metal cap stamped "Boone County Witness Point."

The Harrison monument was set in place of a stone found and accepted as marking the corner. The stone was slightly west of the center of the physical roadway of County Road 800 East, though close to the midpoint between the end posts on each side of the road. The position of the stone also fits well, in the east-west dimension, with the extended physical center of the roadway to the south and is at the easterly prlongation of an old fence to the west. The stone is 11 inches by 6 inches at its widest point and 12 inches tall. The stone was found to be standing vertically, fully lodged in the clay sub-base of the road, with the top of the stone at 5 inches below the existing surface of the road. No previous record of this stone is on file with this office.

A previous BCS tie card, undated though likely from 1968, states "no stone found." A piece of railroad rail found 1.8' E and 0.3' N of the top center of the stone was likely set as part of the field work associated with the creation of that tie card. The rail is closer to the physical center of the roadway than the stone, but does not fit as well with other evidence, including the extended physical roadway or the posts on each side. The stone is considered to be better evidence of the location of the original corner than the rail. The rail may represent a previous interpretation of the corner by the Office of the County Surveyor, though it is not specifically documented as such, and has been held by previous surveys as marking the corner. The 1967 tie card is considered erroneous, given the fact that the exclusive documentation on the tie card states "no stone found" while clearly a stone was present. It is noted that this corner is on the slope of a short, steep hill, through which the road drifts slightly to the east of the longer roadway. It is believed that the 1967 crew probably looked exclusively in the physical center of the roadway at the easterly prolongation of the old fence and did not search beyond that specific point. The rail was removed during excavation. Due to its shallow depth, the stone was also removed and the Harrison monument was set in place of the stone.



*Kenneth E. Hedge*  
 Kenneth E. Hedge, County Surveyor

*J. S. Swift*  
 James S. Swift, IN LS 20200054  
 January 30, 2008

Eagle & Worth Townships

Section 29 T18N, R2E (Worth)	Section 28 T18N, R2E (Eagle)
Section 32 T18N, R2E (Eagle)	Section 33 T18N, R2E (Eagle)

PHOTOGRAPHIC DOCUMENTATION

Date of photography: 11/14/2007

View from east, looking west. The stone is exposed to bottom. Most of the stone was embedded in the clay sub-base layer below the gravel road. Main square hole is 4 feet by 4 feet centered on the railroad rail. Stone found at west edge of main hole. Note wood end post to west.



View from above and south of stone as exposed. The top of the stone is 5 inches below the surface of the road.



View from above and slightly south of west. Clay sub-base has been excavated from around the stone almost to the bottom of the stone.



View from above and west. Hole and indentation in the clay sub-base after the stone was removed. Harrison monument was set in the position of the midpoint of the top of the stone.

