

SECTION CORNER RECORD

SW 400-400

BOONE COUNTY SURVEYOR'S OFFICE

State Plane grid coordinates NAD83 (2011):

North: 1724229.66 East: 3103688.18 (U.S. survey feet)

Type of monument: Harrison, 4" disk 'Section Corner'

Depth: Six inches below adjacent gravel road surface

Indiana tie card references:

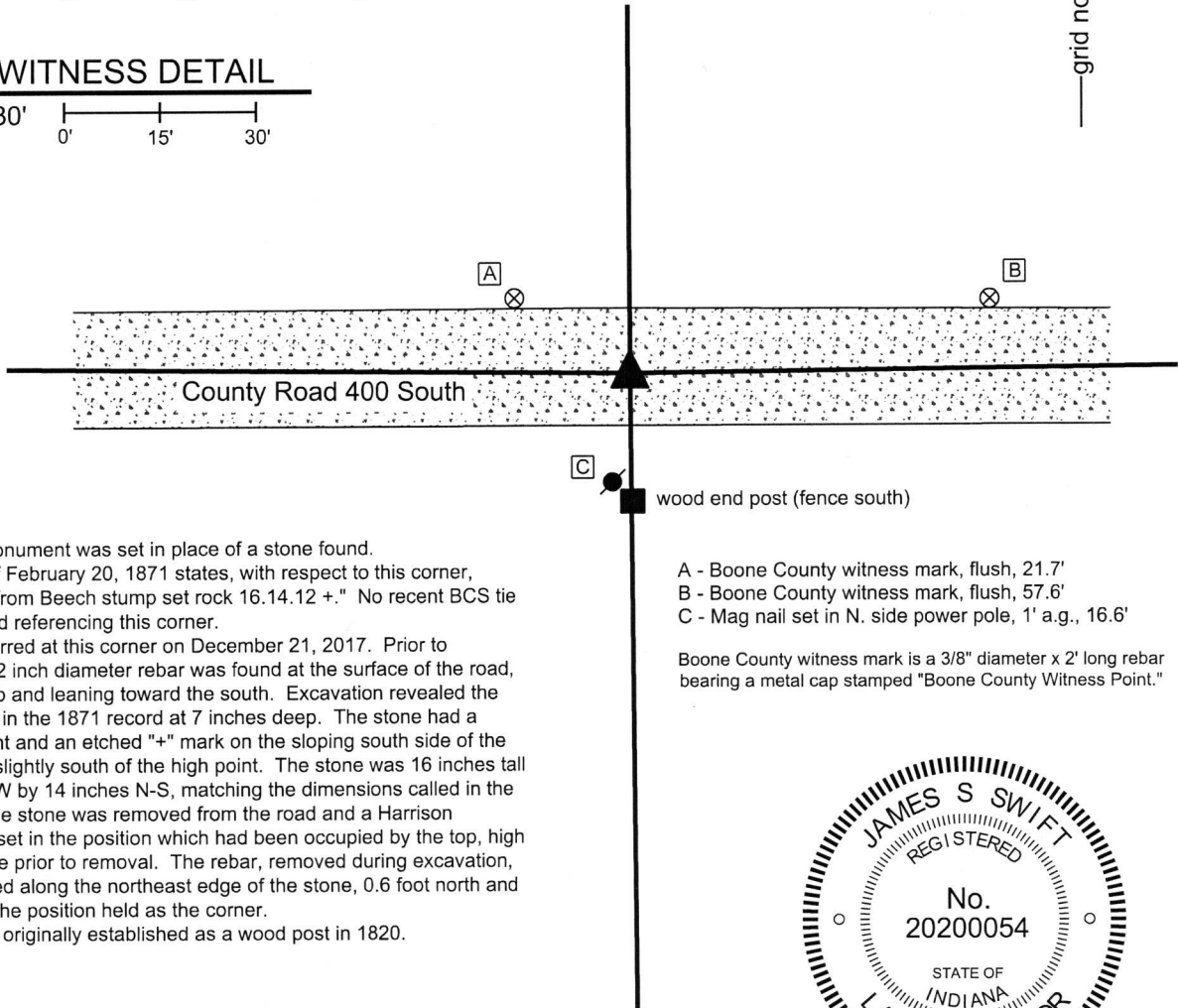
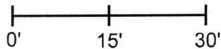
IN02_T18NR1W20_80 IN02_T18NR1W21_72

IN02_T18NR1W29_08 IN02_T18NR1W28_00



CORNER WITNESS DETAIL

SCALE 1" = 30'



The Harrison monument was set in place of a stone found.

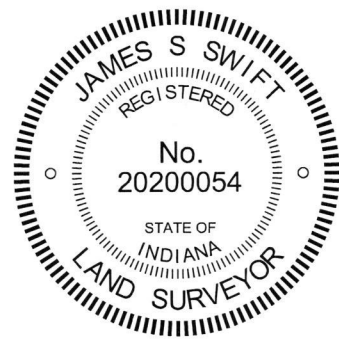
A BCS record of February 20, 1871 states, with respect to this corner, "Reestablished from Beech stump set rock 16.14.12 +." No recent BCS tie cards were found referencing this corner.

Excavation occurred at this corner on December 21, 2017. Prior to excavation, a 1/2 inch diameter rebar was found at the surface of the road, bent near the top and leaning toward the south. Excavation revealed the stone described in the 1871 record at 7 inches deep. The stone had a distinct high point and an etched "+" mark on the sloping south side of the top of the rock, slightly south of the high point. The stone was 16 inches tall by 12 inches E-W by 14 inches N-S, matching the dimensions called in the 1871 record. The stone was removed from the road and a Harrison monument was set in the position which had been occupied by the top, high point of the stone prior to removal. The rebar, removed during excavation, had been situated along the northeast edge of the stone, 0.6 foot north and 0.3 foot east of the position held as the corner.

This corner was originally established as a wood post in 1820.

- A - Boone County witness mark, flush, 21.7'
- B - Boone County witness mark, flush, 57.6'
- C - Mag nail set in N. side power pole, 1' a.g., 16.6'

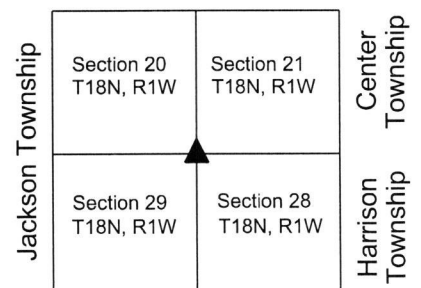
Boone County witness mark is a 3/8" diameter x 2' long rebar bearing a metal cap stamped "Boone County Witness Point."



Kenneth E. Hedge
Kenneth E. Hedge, County Surveyor

James S. Swift
James S. Swift, IN LS 20200054

February 6, 2018



SECTION CORNER RECORD

SW 400-450

BOONE COUNTY SURVEYOR'S OFFICE

State Plane grid coordinates NAD83 (2011):
North: 1724253.75 East: 3101052.40 (U.S. survey feet)

Type of monument: Harrison, 4" disk 'Section Corner'
Depth: Six inches below adjacent gravel road surface

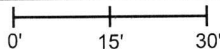
Indiana tie card references:

IN02_T18NR1W20_76
IN02_T18NR1W29_04



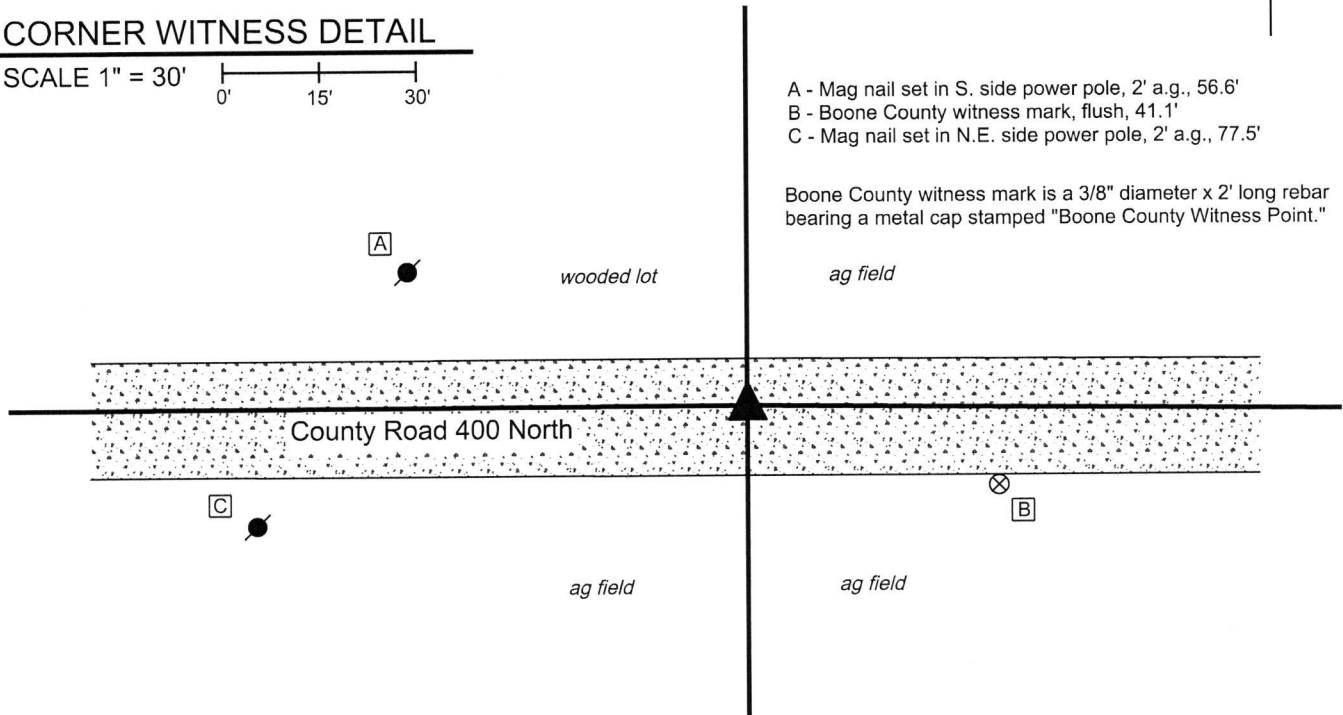
CORNER WITNESS DETAIL

SCALE 1" = 30'

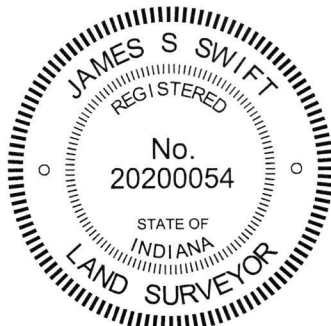


- A - Mag nail set in S. side power pole, 2' a.g., 56.6'
- B - Boone County witness mark, flush, 41.1'
- C - Mag nail set in N.E. side power pole, 2' a.g., 77.5'

Boone County witness mark is a 3/8" diameter x 2' long rebar bearing a metal cap stamped "Boone County Witness Point."



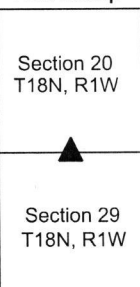
The Harrison monument was set in place of a stone found.
A BCS record of October 9, 1912 states, with respect to this corner, "Reestd from stumps of both trees. Set Rock 16x8x7 +."
No recent BCS tie cards were found marking this corner.
Excavation occurred at this corner on December 20, 2017. Prior to excavation, a railroad spike was found approximately 3 inches deep in the road. No documentation was found indicating the origin of the spike. Excavation revealed the stone described in the 1912 record at 7 inches deep. As found, the stone appeared to be leaning toward the south. The stone was removed, measured and found to match the dimensions called in the 1912 record. An etched "+" mark was found on what would have been the south side of the stone, as found, but was likely the top of the stone as originally placed. Although the stone appeared to be leaning, the base of the stone was well embedded in the clay layer below the road bed and the overall rock did not appear to have been disturbed from its original position, except for the lean to the south. The stone was held as marking the corner and a Harrison monument was set in place of the base of the stone, as found embedded below the road bed. The railroad spike, removed during excavation, had been 1.6 feet north and 1.3 feet east of the position held as the corner.
This corner was originally established as a wood post in 1819.



Kenneth E. Hedge, County Surveyor

James S. Swift, IN LS 20200054
February 6, 2018

Jackson Township



SECTION CORNER RECORD

SW 400-500

BOONE COUNTY SURVEYOR'S OFFICE

State Plane grid coordinates NAD83 (2011):

North: 1724249.64 East: 3098403.03 (U.S. survey feet)

Type of monument: Harrison, 4" disk 'Section Corner'

Depth: One inch below adjacent road surface

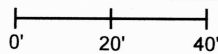
Indiana tie card references:

IN02_T18NR1W20_72 IN02_T18NR1W19_80

IN02_T18NR1W30_08 IN02_T18NR1W29_00

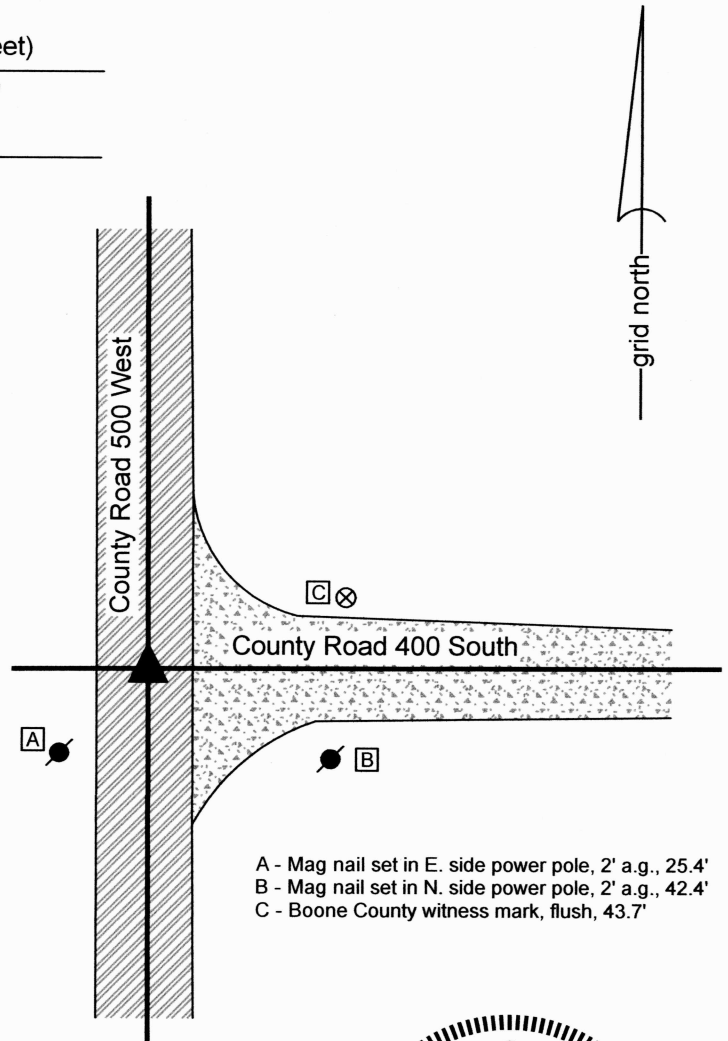
CORNER WITNESS DETAIL

SCALE 1" = 40'

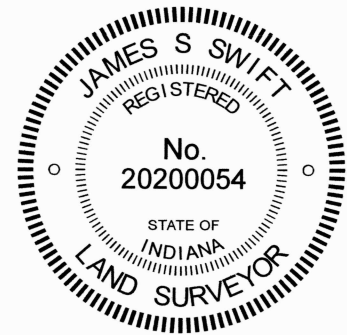


The Harrison monument was set in place of a stone found. No specific descriptions of this corner were found in the BCS Surveyor's Record beyond the original establishment of the corner as a wood post in 1820. However, the corner is referenced in a record of January 5, 1874, which states that the west quarter corner of Section 20 was established on-line between this corner and the northwest corner of Section 20, which indicates that some monument was found to establish that alignment, presumably a stone set by earlier surveyors or pioneer land owners. A BCS tie card dated August 25, 1967 shows the corner with reference ties but notes simply "No Stone."

This corner was excavated on June 7, 2024. Prior to excavation, no monument was visible at the intersection of the county roads, though we found and exposed a railroad spike at 4 inches deep with use of a metal detector. Excavation revealed a vertical section of railroad rail at 9 inches deep, directly below the railroad spike. Though not called-for on that document, this monument was most likely set in association with the 1967 tie card. Further excavation revealed a stone found at 14 inches deep, north and east of the rail. As found, the stone was clearly leaning to the west. As stood up, the stone measured 16 inches tall by 12 inches N-S by 5 inches E-W with a distinct high point at about 6 inches below the current road bed. No specific mark was observed on the stone, which was as expected, given that the records indicate that stone was not specifically called out as set by the County Surveyor, but found and held by the County Surveyor in 1874. In excavation of stones throughout the county, we have observed that typically, only stones set by the County Surveyor after about 1850 have marks. Stones set by earlier surveyors or pioneer land owners do not typically have marks. The bottom half of the stone was embedded in the clay layer below the road, while the top half of the stone protruded into the fill material of the road bed. This protrusion into the road bed may account for how and why the stone was leaned over, presumably hit by road grading equipment at some point when the surface of the road was yet gravel and lower than it is today. This position of the stone fit well with the local evidence of the corner in the form of the centers of the county roads to the north, south and east. The railroad spike and railroad rail, both removed during excavation, had been 1.8 feet south and 1.8 feet west of the stone. The reference on the 1967 tie card of "no stone" is clearly erroneous. The stone was held as marking the corner. The stone was removed and a Harrison monument was set in place of the top, high point of the stone, as it was stood up to a vertical orientation. This corner was originally established as a wood post in 1820.



- A - Mag nail set in E. side power pole, 2' a.g., 25.4'
- B - Mag nail set in N. side power pole, 2' a.g., 42.4'
- C - Boone County witness mark, flush, 43.7'



Jackson Township

Section 19 T18N, R1W	Section 20 T18N, R1W
Section 30 T18N, R1W	Section 29 T18N, R1W

Carol Cunningham
 Carol Cunningham, County Surveyor

James S. Swift
 James S. Swift, IN LS 20200054

June 12, 2024

SECTION CORNER RECORD

SW 450-400

BOONE COUNTY SURVEYOR'S OFFICE

State Plane grid coordinates NAD83 (2011):

North: 1721598.24 East: 3103711.40 (U.S. survey feet)

Type of monument: Harrison, 4" disk 'Section Corner'

Depth: Two inches above adjacent ground

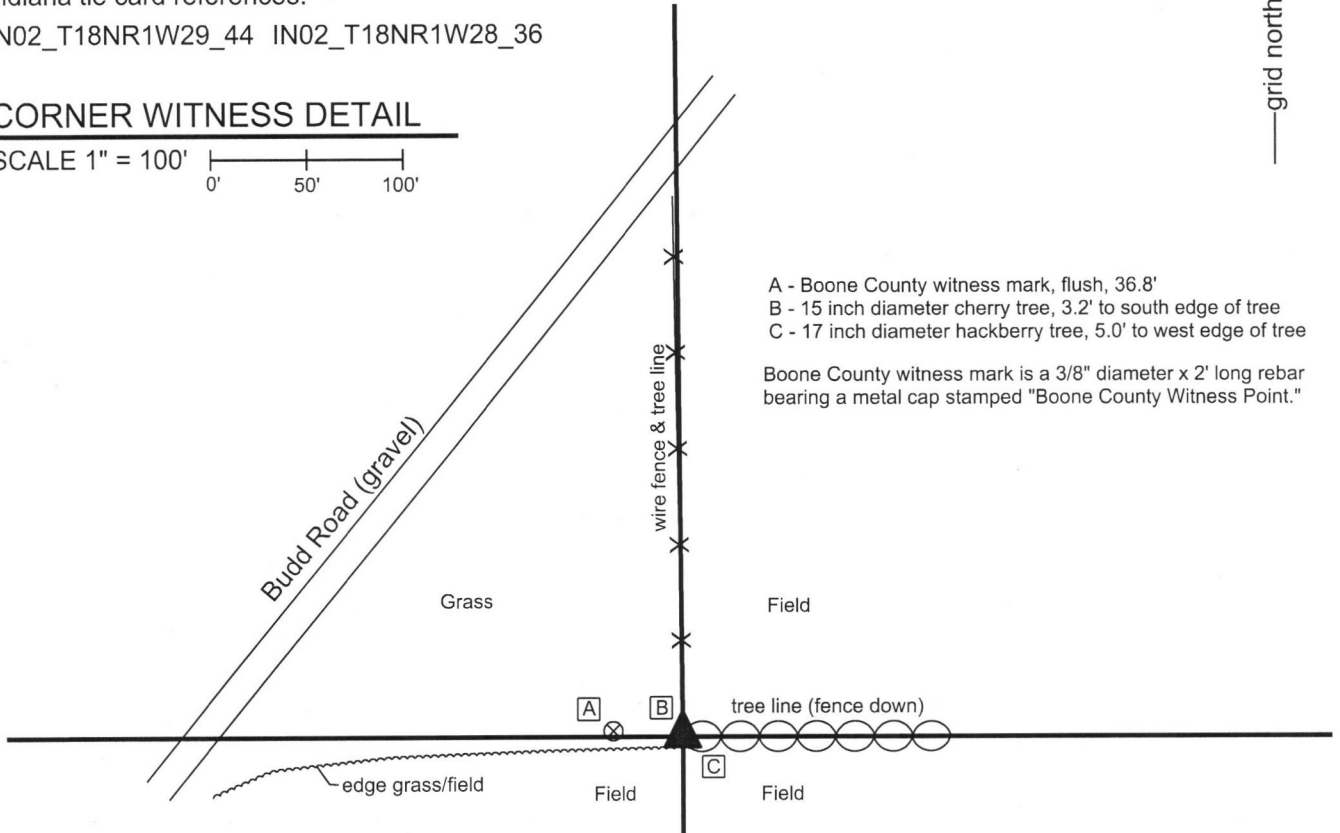
Indiana tie card references:

IN02_T18NR1W29_44 IN02_T18NR1W28_36



CORNER WITNESS DETAIL

SCALE 1" = 100'
0' 50' 100'



- A - Boone County witness mark, flush, 36.8'
- B - 15 inch diameter cherry tree, 3.2' to south edge of tree
- C - 17 inch diameter hackberry tree, 5.0' to west edge of tree

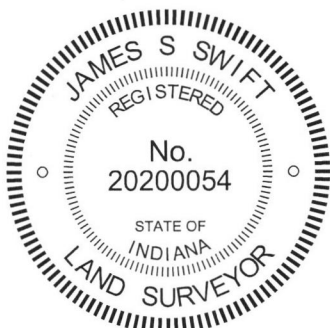
Boone County witness mark is a 3/8" diameter x 2' long rebar bearing a metal cap stamped "Boone County Witness Point."

The Harrison Monument was set above and in place of the remains of a wood corner post found.

A record dated November 2-4, 1857 states, with respect to this corner, "Reest., Rock 13x19." No recent BCS tie cards were found referencing this corner.

Excavation was performed on September 11, 2017. An ancient wood corner post was found at the intersection of fences to the north and east. The visible portion of the post, as found, was separated from the ground and was leaning substantially northeast, support by the wires of the old fence. The fencing appeared to have been recently nailed to trees in the immediate vicinity of the corner, causing the post to be pulled north and east of its original position as attached to the ground. The base of the post was found in the ground at the intersection of the longer fence lines to the north and east. Excavation around the base of the post uncovered numerous small rocks, none of which matched the dimensions stated in the 1857 record. The base of the post in the ground was accepted as the best available evidence of the corner and was held as marking the corner. The top two feet of the base of the post were broken off from the remainder of the post and a Harrison monument was set directly above the remainder of the post. The total depth of the subterranean portion of the post was not measured.

This corner was originally established as a wood post in 1820.



Kenneth E. Hedge
Kenneth E. Hedge, County Surveyor

James S. Swift
James S. Swift, IN LS 20200054
September 19, 2017

Jackson Township	Harrison Township
Section 29 T18N, R1W	Section 28 T18N, R1W

SECTION CORNER RECORD

SW 450-500

BOONE COUNTY SURVEYOR'S OFFICE

State Plane grid coordinates NAD83 (2011):

North: 1721606.73 East: 3098414.54 (U.S. survey feet)

Type of monument: Harrison, 4" disk 'Section Corner'

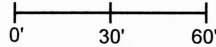
Depth: One inch below adjacent road surface

Indiana tie card references:

IN02_T18NR1W29_36 IN02_T18NR1W30_44

CORNER WITNESS DETAIL

SCALE 1" = 60'



- A - Boone County witness mark, flush, 28.9'
- B - Mag nail set in E. side power pole, 2' a.g., 37.7'
- C - Mag nail set in E. side power pole, 2' a.g., 164.6'
- D - N.E. Corner, house, 1' a.g., 53.2'
- E - West edge, round concrete post, flush, 23.2'

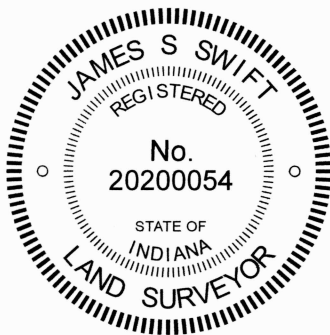
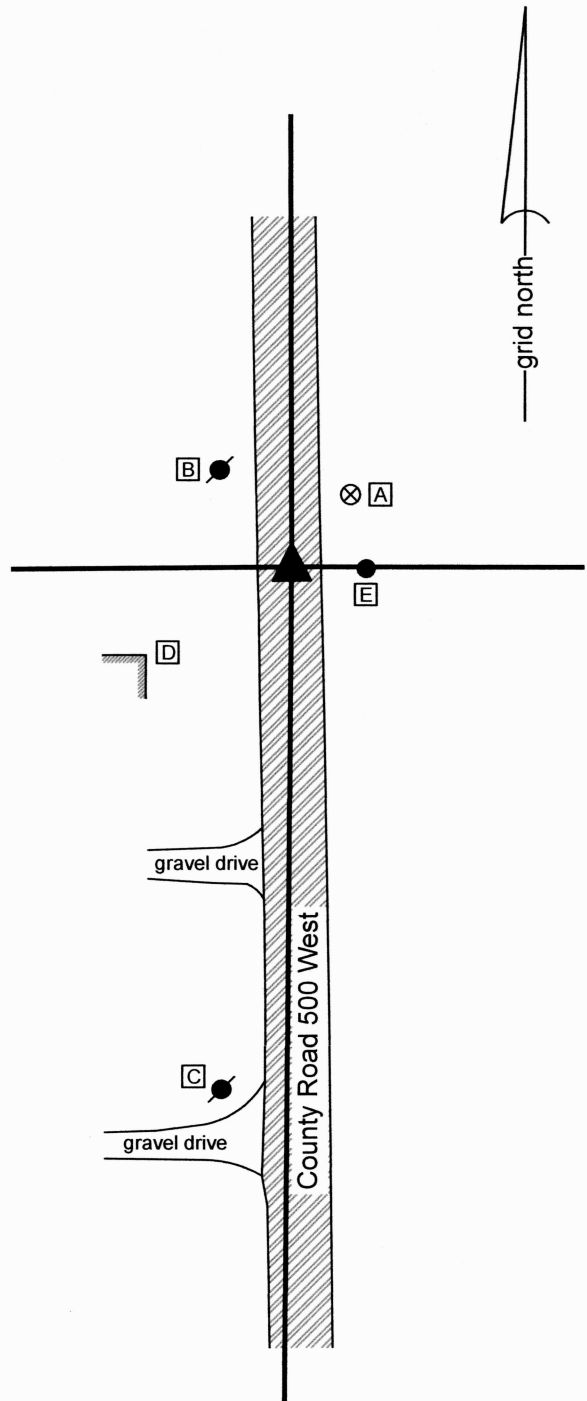
The Harrison monument was set in place of a vertical section of railroad rail found.

No specific descriptions of this corner were found in the BCS Surveyor's Record beyond the original establishment of the corner as a wood post in 1820 and a reference from 1968 which states "no stone."

A BCS tie card dated July 18, 1968 shows the corner in the center of the county road, with a statement of "no stone."

This corner was excavated on June 27, 2024. Prior to excavation, a nail was found at 3 inches deep in the county road. The position of the nail fit with the one remaining distance tie from the 1968 tie card, being the power pole to the northwest. The nail was in the center of the road, in-line with evidence of occupation to the east and west. Excavation revealed a vertical section of railroad rail found at 8 inches deep, directly below the nail. Further excavation of an area 5 feet N-S by 4 feet E-W revealed no further evidence of the corner. The bottom of the road bed was found at 18 inches. Excavation was performed to 21 inches deep.

It is noted that the physical roadway of County Road 500 West deviates from a general straight line in the immediate vicinity of the corner. The nail and rail, which were in the center of the road, were approximately 14 feet east of a line connecting the northeast and southeast corners of Section 30 (see BCS corners SW 400-500 and SW 500-500). The roadway deviates further east as it bears south. At approximately 800 feet south of the corner the center of the road is up to 23 feet east of the mile-long straight line and up to 13 feet east of a line connecting the rail with the southeast corner of Section 30. Our research indicates that the descriptions of properties on both sides of the road have been measured from the position of the rail and that some descriptions reference the fact that the roadway is yet further east from the section line along the line between the east line of the southeast quarter of Section 30 and west line of the southwest quarter of Section 29. All surveys we found have held the position of the rail as the corner. Given the lack of references in the old BCS records to this corner, the lack of contrary evidence found during reconnaissance and excavation, and the universal acceptance of the position of the rail as the corner for surveys done since 1968, we accepted the rail as marking the corner. The rail and nail were both removed during excavation, and a Harrison monument was set in the same position.



Carol Cunningham

 Carol Cunningham, County Surveyor

James S. Swift

 James S. Swift, IN LS 20200054
 July 3, 2024

Jackson Township	
Section 30 T18N, R1W	Section 29 ▲ T18N, R1W

SECTION CORNER RECORD

SW 500-400

BOONE COUNTY SURVEYOR'S OFFICE

State Plane grid coordinates NAD83 (2011):

North: 1718964.75 East: 3103733.23 (U.S. survey feet)

Type of monument: Harrison, 4" disk 'Section Corner'

Depth: 3 inches above adjacent ground

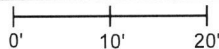
Indiana tie card references:

IN02_T18NR1W29_80 IN02_T18NR1W28_72

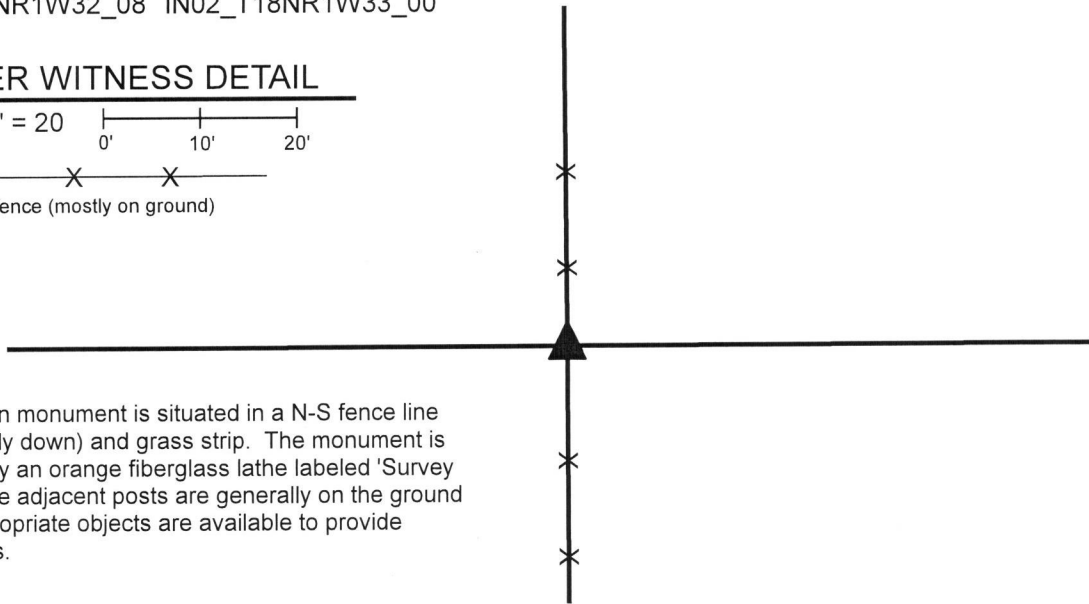
IN02_T18NR1W32_08 IN02_T18NR1W33_00

CORNER WITNESS DETAIL

SCALE 1" = 20'



- wire fence (mostly on ground)

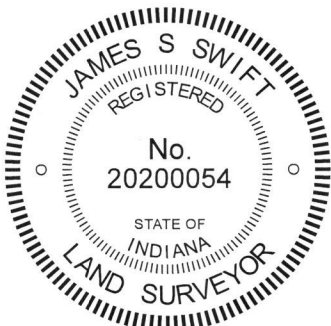


The Harrison monument is situated in a N-S fence line (fence mostly down) and grass strip. The monument is witnessed by an orange fiberglass lathe labeled 'Survey Marker.' The adjacent posts are generally on the ground and no appropriate objects are available to provide distance ties.

The Harrison monument was set over the base of a wood corner post found.

No specific descriptions of this corner were found in the BCS Surveyor's Record beyond the original establishment of the corner as a wood post in 1820. The corner is noted as the terminal point for measurements in BCS records on 1855 and 1857. No recent BCS tie cards were found referencing the corner. The corner is shown as a wood headpost on a survey by Ronald E. Wharry, LS #S0420, dated December 29, 2000 and recorded in Survey Book 5, page 36 in the Office of the Boone County Recorder.

This corner was excavated on March 29, 2019. Prior to excavation, an 8 inch by 8 inch wood corner post was found in a section of North-South fence. As found, the above-ground portion of the post was no longer attached to the ground and was suspended amidst standing fencing, leaning substantially toward the east. The post was attached to fencing to the north and south and had evidence of fencing cut to the east. The post was still attached to a wood brace on the north side and a notch for a former brace was observed on the east side. The aforementioned Wharry survey shows fencing to the north, south, and east. Excavation in the vicinity of the post revealed a remnants of a wagon wheel found approximately two feet north of the post and numerous rocks were found around the post. Two stones were found below the wagon wheel. Neither the wheel nor stones could be positively identified as marking the corner and appeared to simply be lying partially embedded in the ground adjacent to the post. Two large rocks are situated immediately east of the post. A sandstone rock was found at 18 inches deep, immediately south of the post and several small rocks were found adjacent to the north and west edges of the post. The base of the post was found at approximately 14 inches deep. None of the rocks bore the characteristics of stones set purposely to mark the corner. The position of the post fit well with the relative locations of proximate corners and fit with the position of the corner as depicted on the Wharry survey. The base of the post was held as marking the corner. The remnants of the base of the post were left in the ground. Three sections of 1/2 inch diameter rebar, 2 feet long were driven around the remnants of the base of the post. The top of the base of the post and the rebars were encased in concrete and a Harrison monument was set directly above the base of the post.



Kenneth E. Hedge
 Kenneth E. Hedge, County Surveyor

James S. Swift
 James S. Swift, IN LS 20200054
 May 22, 2019

Jackson Township

Section 29 T18N, R1W	Section 28 T18N, R1W
Section 32 T18N, R1W	Section 33 T18N, R1W

SECTION CORNER RECORD

SW 500-450

BOONE COUNTY SURVEYOR'S OFFICE

State Plane grid coordinates NAD83 (2011):

North: 1718961.59 East: 3101056.16 (U.S. survey feet)

Type of monument: Harrison, 4" disk 'Section Corner'

Depth: Flush with ground to west, two inches above ground to east

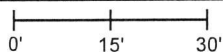
Indiana tie card references:

IN02_T18NR1W29_76

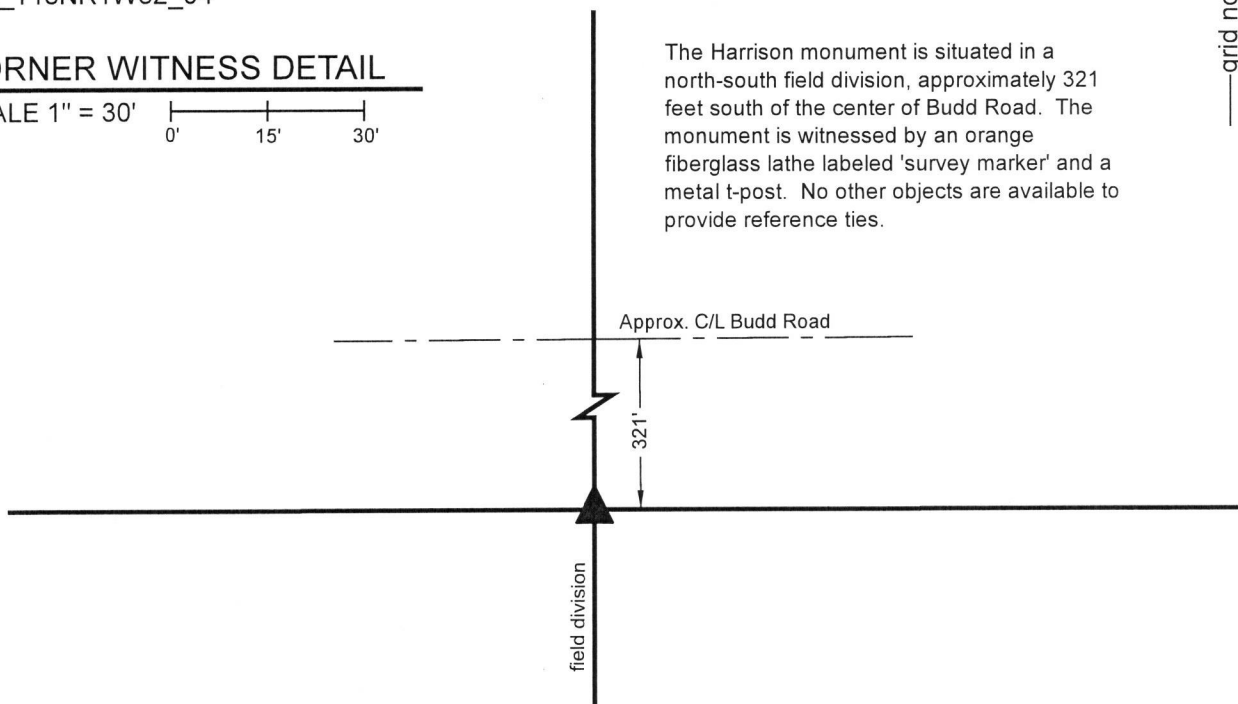
IN02_T18NR1W32_04

CORNER WITNESS DETAIL

SCALE 1" = 30'



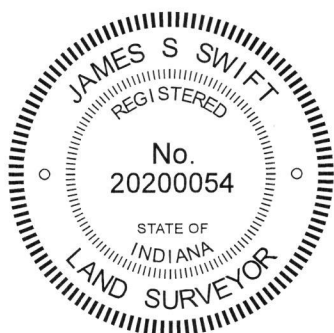
The Harrison monument is situated in a north-south field division, approximately 321 feet south of the center of Budd Road. The monument is witnessed by an orange fiberglass lathe labeled 'survey marker' and a metal t-post. No other objects are available to provide reference ties.




The Harrison monument was set in place of a rebar found.

No specific descriptions of this corner were found in the BCS Surveyor's Record beyond the original establishment of the corner as a wood post in 1820. No recent BCS tie cards were found referencing the corner. The corner is shown as a rebar set on a survey by Ronald E. Wharry, LS #S0420, dated December 29, 2000, recorded in Survey Book 5, page 36 in the Office of the Boone County Recorder. The Wharry survey demonstrates the corner to be at the intersection of a north-south fence and a straight line connecting the section corners to the east and west.

This corner was excavated in August, 2019 and again in October, 2019. The rebar was found, apparently undisturbed, bearing the cap of Mr. Wharry. Extensive probing and manual excavation in the vicinity of the rebar revealed no stones or similar evidence of the corner. The fence shown on the aforementioned survey is no longer present in standing form, but the rebar was found to fall along a line between a wood post found 63 feet south of the corner and a wood post on the south edge of Budd Road. Scraps of east-west fencing were found in the ground, approximately one foot deep, in the immediate vicinity of the corner, indicating that the position established by Mr. Wharry fits with the local physical evidence of the corner. The rebar was held as marking the corner. The rebar was removed and replaced with a Harrison monument in the same position. It is noted that the adjoining deed descriptions do not provide sufficient information to confirm the position of the corner with respect to Budd Road, several hundred feet to the north. It is also noted that the monument does not fall precisely along a line connecting the corners to the east and west, but is within 0.2 foot of a line connecting the evidence currently known for those corners.




Kenneth E. Hedge, County Surveyor


James S. Swift, IN LS 20200054
November 13, 2019

Jackson Township

Section 29
T18N, R1W

Section 32
T18N, R1W

SECTION CORNER RECORD

SW 500-500

BOONE COUNTY SURVEYOR'S OFFICE

State Plane grid coordinates NAD83 (2011):

North: 1718960.28 East: 3098397.15 (U.S. survey feet)

Type of monument: Harrison, 4" disk 'Section Corner'

Depth: One inch below adjacent road surface

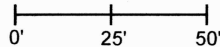
Indiana tie card references:

IN02_T18NR1W30_80 IN02_T18NR1W29_72

IN02_T18NR1W31_08 IN02_T18NR1W32_00

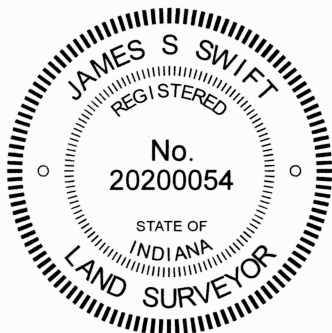
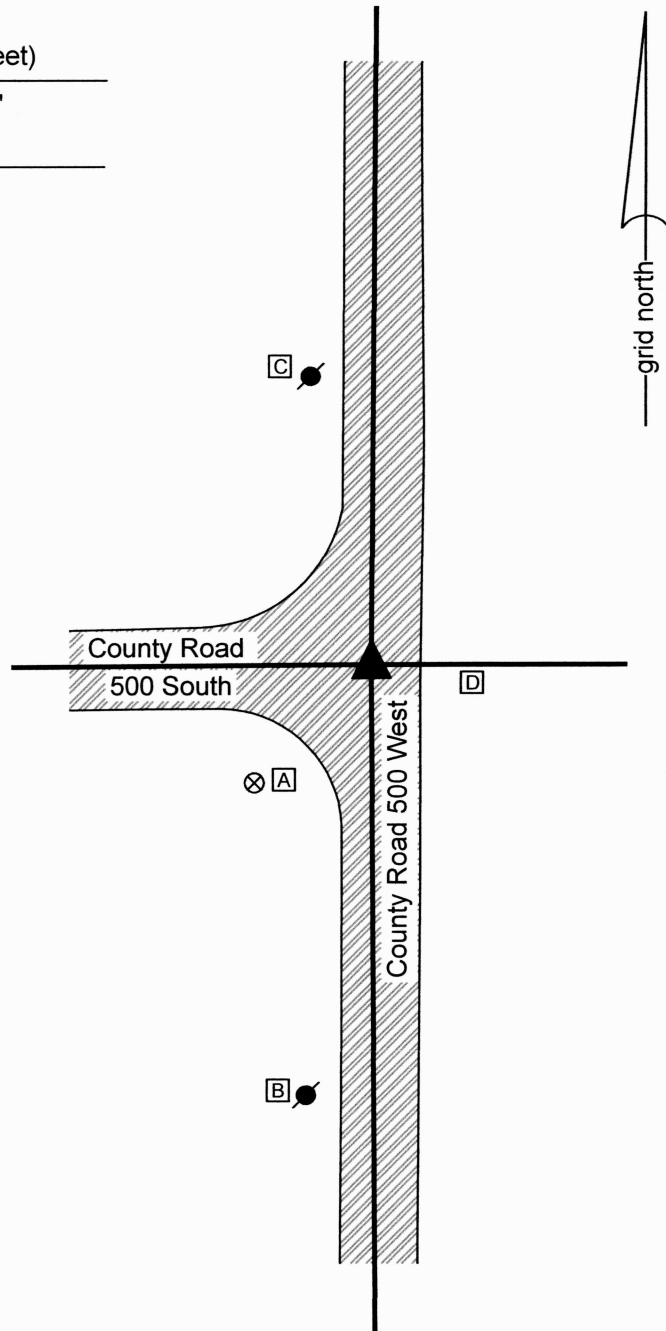
CORNER WITNESS DETAIL

SCALE 1" = 50'



- A - Boone County witness mark, flush, 43.2'
- B - Mag nail set in E. side power pole, 2' a.g., 113.3'
- C - Mag nail set in S. side power pole, 2' a.g., 76.7'
- D - S.W. Corner, Arrow Sign post, flush, 19.6'

The Harrison monument was set over a stone found. A BCS record dated February 24, 1871 states, with respect to this corner, "Reestablished from roots of trees. Set two rocks. Under one 5-1/2.5.3-1/2. Top one 16.14.10 +." A BCS tie card dated July 9, 1968 states "No stone." This corner was excavated on June 27, 2024. Previously, a Mag Nail had been found at the intersection of the two county roads, though this monument was not present at the time of excavation. Immediately prior to excavation, a 5/8-inch diameter rebar was found at 1 inch deep at the intersection. Excavation revealed a vertical section of railroad rail at 12 inches deep, slightly southwest of the rebar. Further excavation revealed a stone found at 16 inches deep. This stone was fully in the fill material of the road and much smaller than the stone called-for in the 1871 record. The stone was removed and another stone was found directly below, at 25 inches deep. This lower stone is the monument described in the 1871 record. The stone had a distinct "+" mark chiseled on the top, center. With 9 inches of the top of the stone exposed, the stone measured 8 inches N-S by 8 inches E-W. With use of a probe, we determined that the stone was 10 inches E-W by approximately 13 inches N-S by at least 16 inches tall. The stone was embedded in the clay layer below the road, vertical and oriented in cardinal directions. This stone was accepted as being the monument called-for in the 1871 record and was held as marking the corner. A Harrison monument was set directly over the '+' mark on the stone. The nail which existed previously had been 1.4 feet south and 1.8 feet east of the mark on the stone. The rebar and rail, both removed during excavation, had been 1.2 feet south and 2.2 feet east (rebar) and 1.5 feet south and 2.1 feet east (rail). The rail is believed to have been set in association with the creation of the 1968 tie card. Clearly the reference to 'no stone' on that document was not correct. This corner was originally established as a wood post in 1820.



Carol Cunningham
 Carol Cunningham, County Surveyor

James S. Swift
 James S. Swift, IN LS 20200054
 July 3, 2024

Jackson Township

Section 30 T18N, R1W	Section 29 T18N, R1W
Section 31 T18N, R1W	Section 32 T18N, R1W