

SECTION CORNER RECORD

NW 700-900

BOONE COUNTY SURVEYOR'S OFFICE

State Plane grid coordinates NAD83 (CORS96):

North: 1782726.77 East: 3077227.80 (U.S. survey feet)

Type of monument: Harrison, 4" disk 'Section Corner'

Depth: generally flush with ground along steep hillside

Indiana tie card references:

IN02_T20NR2W28_80 IN02_T20NR2W27_72

IN02_T20NR2W33_08 IN02_T20NR2W34_00

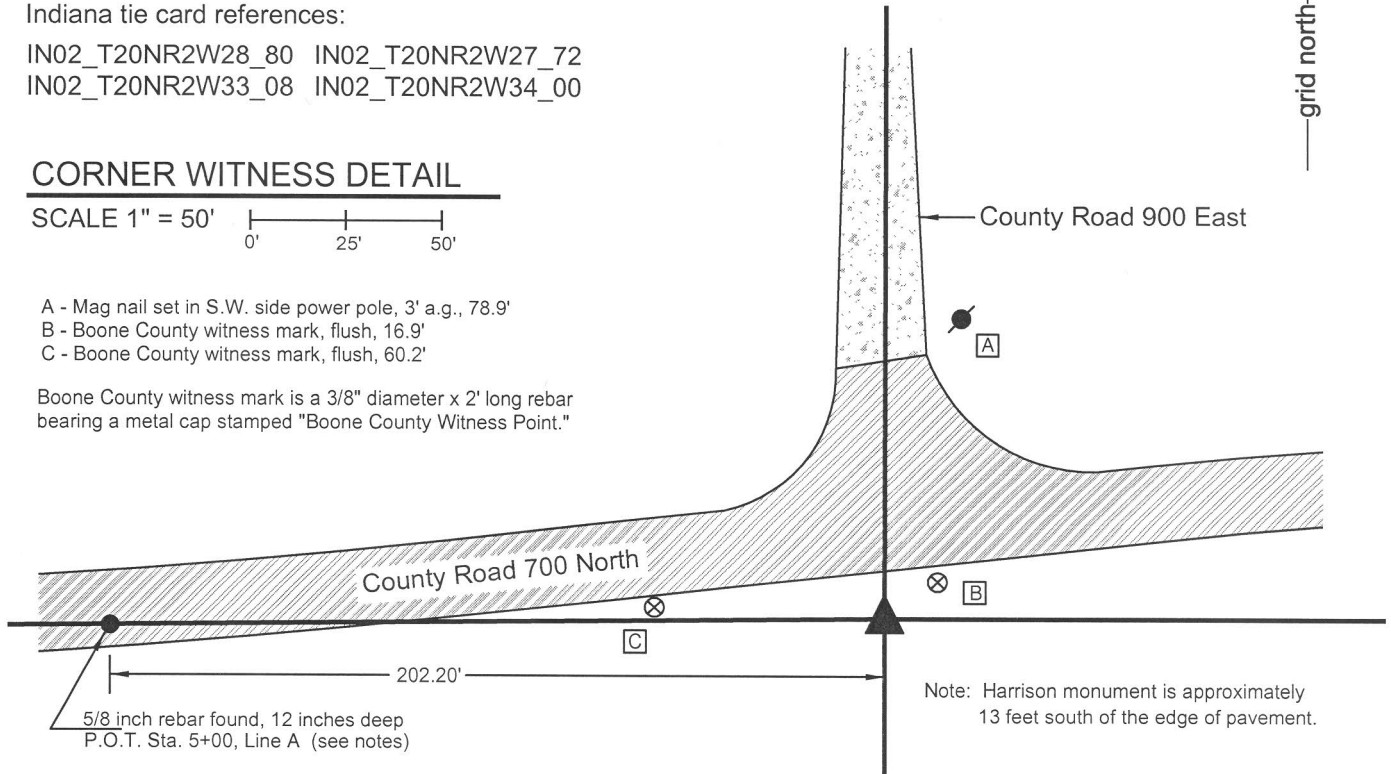


CORNER WITNESS DETAIL

SCALE 1" = 50'

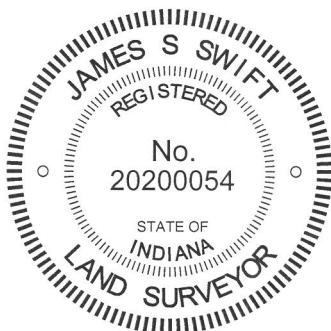
- A - Mag nail set in S.W. side power pole, 3' a.g., 78.9'
- B - Boone County witness mark, flush, 16.9'
- C - Boone County witness mark, flush, 60.2'

Boone County witness mark is a 3/8" diameter x 2' long rebar bearing a metal cap stamped "Boone County Witness Point."



The Harrison monument was set in a calculated position per bridge plans.

No specific descriptions of this corner were found in the old BCS Surveyor's Record, nor were any recent BCS tie cards found referencing this corner. Significant excavation was not performed at this corner due to the fact that it is situated in an area of significant fill material associated with the approach to a bridge over Sugar Creek immediately to the east. The position of this corner was determined in October 2014. During reconnaissance beginning October 16, 2014 no monumentation was found marking the corner. The plans for the adjacent bridge were provided by the Boone County Highway Department. These plans are dated June 6, 1995, referenced as project BRO-9906. These plans show the corner as being a "Blt. Spike, Sec. Cor." and reference the corner as being at Sta. P.O.T. 7+02.20, Line A. The original control monuments for the bridge plans are a rebar at P.O.T. 5+00.00, Line A and a rebar at P.O.T. 18+41.93, Line A. Both of these rebars were recovered, apparently undisturbed, and located at the proper distance apart from each other, per the stations. The rebar at 5+00 is in the road 12 inches deep and the rebar at 18+41.93 is in the road 3 inches deep. These two rebars were held as defining line A for the bridge plans. The section corner was established at 202.20 feet east of the rebar at station 5+00 and a Harrison monument was set at this position. It is noted that the plans graphically demonstrate this corner as having been in the center of the T-intersection of the two roads, prior to reconstruction of the roads. This position did fit well with the centers of the road north and west, as they are located beyond the areas of reconstruction. Furthermore, this position fit well with the relative positions of a stone found at the quarter section corner 1/2 mile west and the approximate location of the quarter-quarter corner 1/4 mile west, being in the center of the east-west road and in line with an old fence to the north. It is further noted that excavation was performed at this quarter-quarter corner but no physical evidence of the corner was found except the road and fence. The Harrison monument is set within a section of 10 inch diameter HDPE storm pipe set vertically, 22 inches tall, filled with concrete. This monument falls along the slope of the fill area approximately 13 feet south of the south edge of pavement of the road, in line with the center of the road to the north. This corner was originally established as a wood post in 1829.



Kenneth E. Hedge, County Surveyor

James S. Swift, IN LS 20200054
 March 27, 2015

Sugar Creek Twp.

| | |
|-------------------------|-------------------------|
| Section 28 T20N, R2W | Section 27 T20N, R2W |
| Section 33 T20N, R2W | Section 34 T20N, R2W |

SECTION CORNER RECORD

NW 700-950

BOONE COUNTY SURVEYOR'S OFFICE

State Plane grid coordinates NAD83 (CORS96):

North: 1782701.85 East: 3074557.74 (U.S. survey feet)

Type of monument: Harrison, 4" disk 'Section Corner'

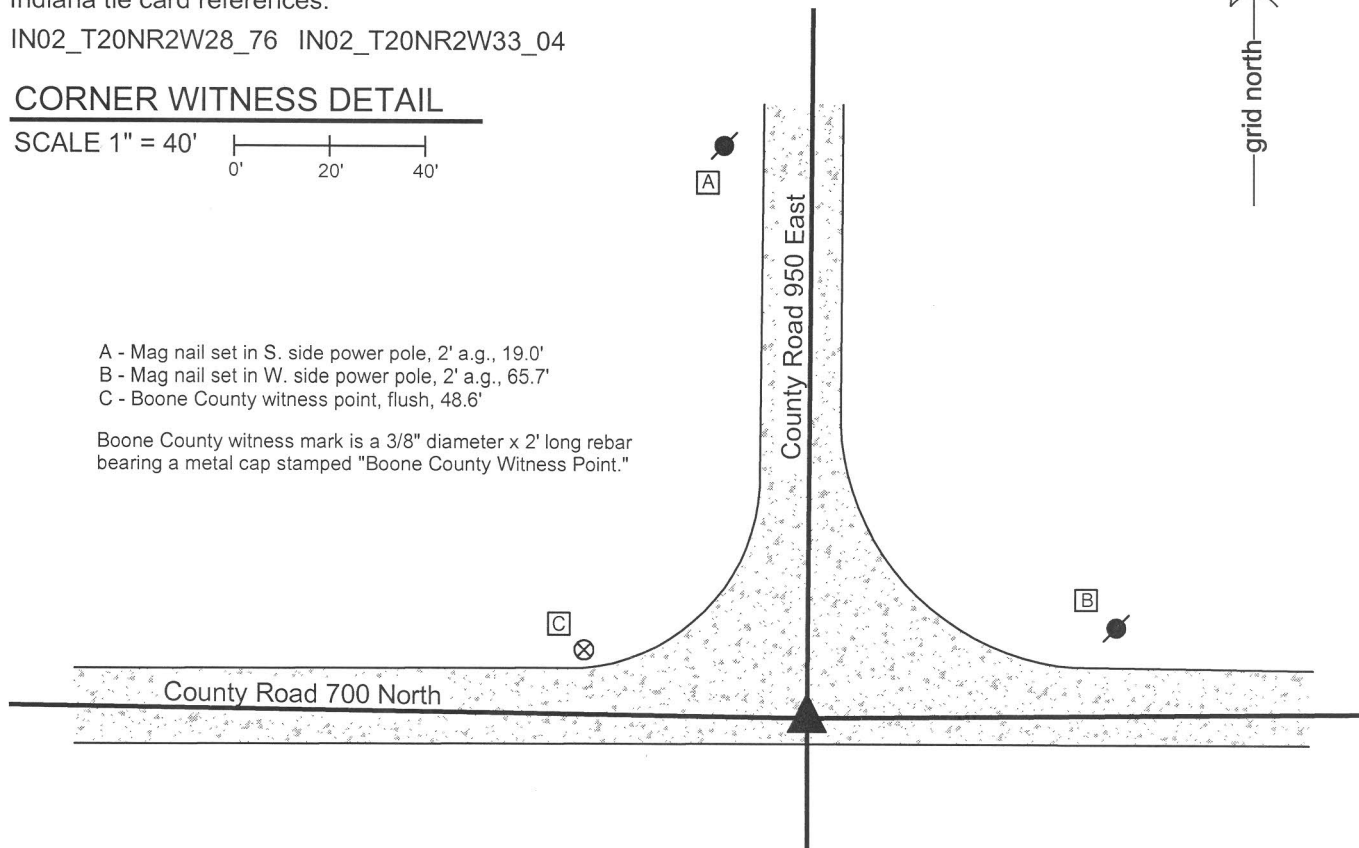
Depth: six inches below adjacent gravel road surface

Indiana tie card references:

IN02_T20NR2W28_76 IN02_T20NR2W33_04

CORNER WITNESS DETAIL

SCALE 1" = 40'



- A - Mag nail set in S. side power pole, 2' a.g., 19.0'
- B - Mag nail set in W. side power pole, 2' a.g., 65.7'
- C - Boone County witness point, flush, 48.6'

Boone County witness mark is a 3/8" diameter x 2' long rebar bearing a metal cap stamped "Boone County Witness Point."

The Harrison monument was set in place of a stone found.

A BCS record dated March 16, 1863 states, with respect to this corner, "A stone that was set. One tree gree, stump of the other here. Line Crooked E & W." No recent BCS tie cards were found referencing this corner. Subsequent records up to 1925 reference this corner as the terminal point for measurements, though contain no specific description of the corner or monumentation.

Excavation was performed at this corner on October 29, 2014. No metal monuments were found prior to excavation. A stone was found at 5 inches deep at the intersection of the gravel roads to the North, East and West. The stone was vertical with a clear and distinct high point. The north and east sides of the stone were flat and vertical. The stone was removed from the road, measured and found to be 24 inches tall by 12 inches E-W by 10 inches N-S. No specific marks were found. The stone clearly appeared to be a corner stone. It was situated slightly south of the center of the T-intersection but well in line with the centers of the roads to the North, East and West. The stone is approximately 31 feet south of a straight line connecting the section corners 1/2 mile east and west, respectively. This fact harmonizes reference in the 1863 record of "line crooked E & W." The stone was accepted as the best available evidence of the corner. In order for a Harrison monument to be set below the depth at which road graders may disturb the road bed, the stone was removed and replaced with a Harrison monument set in the position of the top, high point of the stone. This corner was originally established as a wood post in 1829.



Kenneth E. Hedge
 Kenneth E. Hedge, County Surveyor

James S. Swift
 James S. Swift, IN LS 20200054
 March 27, 2015

Sugar Creek Township

Section 28
T20N, R2W

Section 33
T20N, R2W

PHOTOGRAPHIC DOCUMENTATION

Date of photography: October 29, 2014

The stone as originally found.



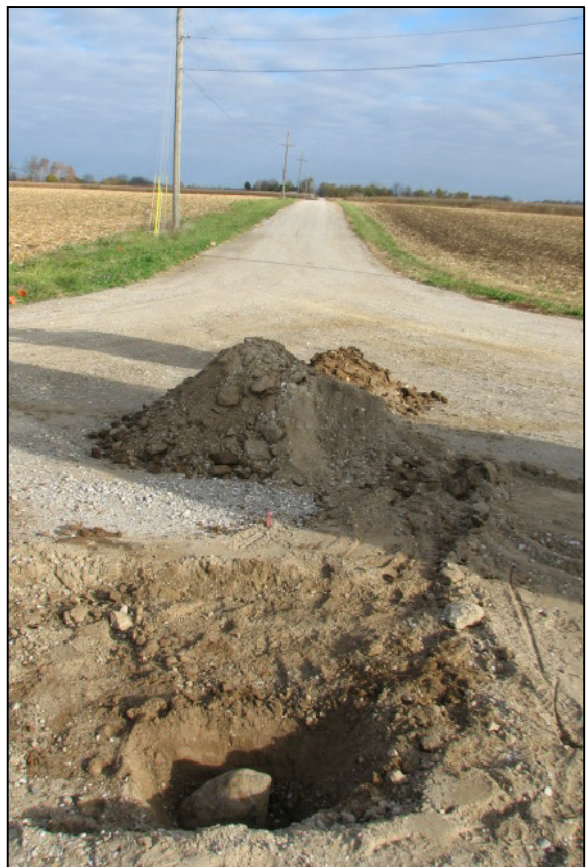
The stone more fully exposed.



The stone removed from the road.
This view shows the north side of the
stone, as it was situated in the road.



View from the south, looking across the stone
and north along County Road 900 West.



The stone removed from the road.
This view shows the north and east sides
of the stone, as it was situated in the road.



For details and documentation, refer to
related sheet "Section Corner Record."

SECTION CORNER RECORD

NW 700-1000

BOONE COUNTY SURVEYOR'S OFFICE

State Plane grid coordinates NAD83 (2011):

North: 1782740.08 East: 3071902.64 (U.S. survey feet)

Type of monument: Harrison, 4" disk 'Section Corner'

Depth: Six inches below adjacent gravel road surface

Indiana tie card references:

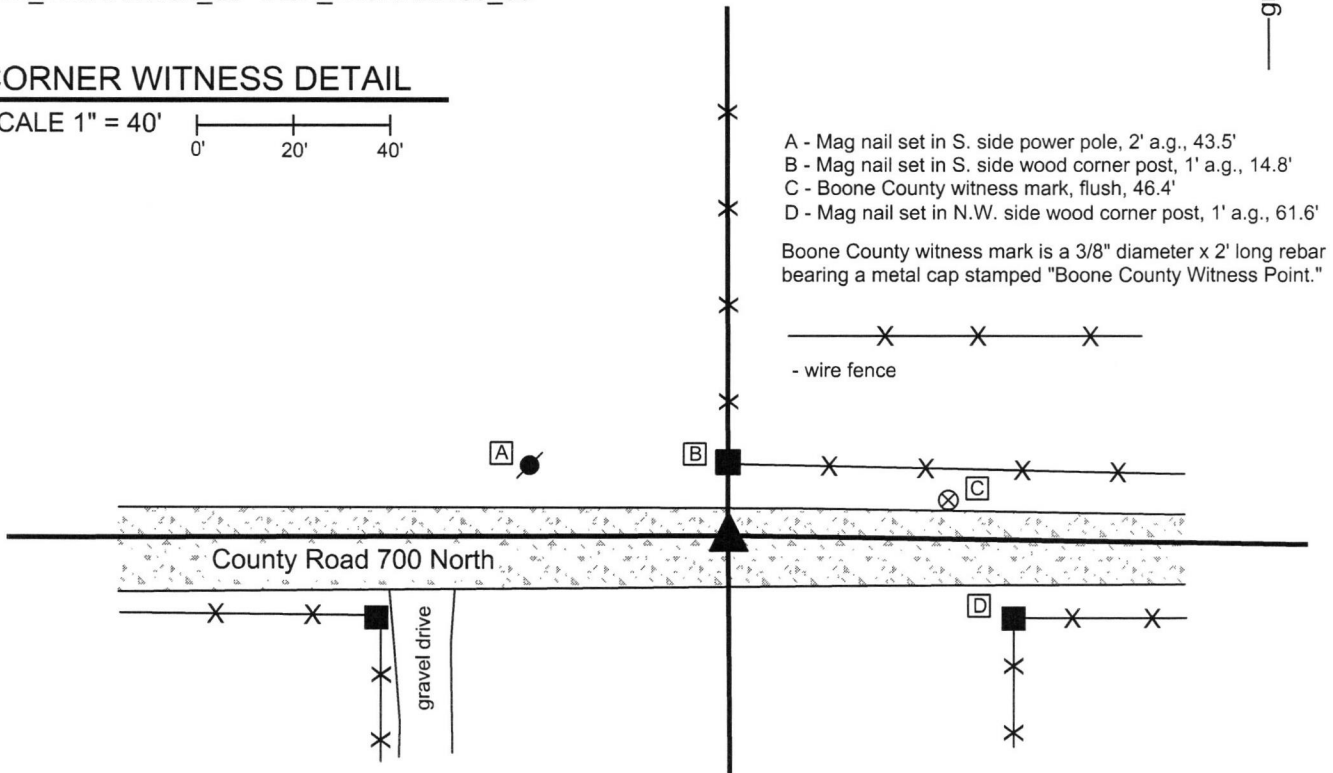
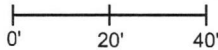
IN02_T20NR2W29_80 IN02_T20NR2W28_72

IN02_T20NR2W32_08 IN02_T20NR2W33_00



CORNER WITNESS DETAIL

SCALE 1" = 40'



The Harrison monument was set in place of a stone found.

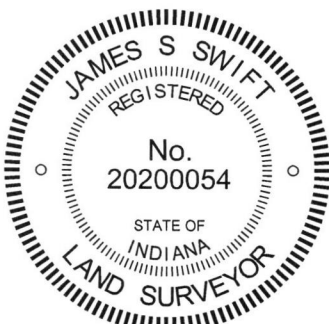
A BCS record dated March 16, 1863 states, with respect to this corner, "Reestablished. Both trees just cut down. Set a Rock 24,12,8 mark across the top. 1 notch on S. corner of Rock, 4 on E corner, 5 on N, and 2 on the West."

No recent tie cards were found referencing this corner.

Excavation was performed at this corner on June 21, 2016. No metal monuments were found prior to excavation. Excavation was centered on a point one rod south of the well established wood corner post at the north edge of the road, being the corner for fences to the north and east. A stone was found at 5 inches deep in the gravel road. The stone was of red granite material and was found standing vertically with a distinct high point. The stone was oriented in the NW-SE direction with the NE and SW sides being flat and vertical. It appeared in the field that the top of the stone had been worn by road grading equipment. Hence, no marks were found on the top of the stone. However, the notches called for in the 1863 description of the monument were found in the form of distinctly visible notches carved into the edges of the rock beginning at approximately 6 inches below the top of the rock. The stone was removed, measured, and found to be 23 inches tall by 12 inches NW-SE by 8 inches wide at the base. The upper part of the rock is approximately 6 inches wide.

The stone was accepted as being the same monument called for in the 1863 records. The stone was removed and replaced with a Harrison monument in the same position.

This corner was originally established as a wood post in 1829.



Kenneth E. Hedge
 Kenneth E. Hedge, County Surveyor

James S. Swift
 James S. Swift, IN LS 20200054
 March 23, 2017

Sugar Creek TWP

| | |
|-------------------------|-------------------------|
| Section 29 T20N, R2W | Section 28 T20N, R2W |
| Section 32 T20N, R2W | Section 33 T20N, R2W |

PHOTOGRAPHIC DOCUMENTATION

Date of photography: 7/5/2016

View from above and west, showing the west side of the stone and the notches on the NW and SW edges of the stone.



View of the stone from above and south.



View of the stone and the post on the north side of County Road 700 North.



View looking across the stone and east along County Road 700 North



For details and documentation, refer to related sheet "Section Corner Record."

SECTION CORNER RECORD

NW 750-900

BOONE COUNTY SURVEYOR'S OFFICE

State Plane grid coordinates NAD83 (2011):

North: 1785376.56 East: 3077235.41 (U.S. survey feet)

Type of monument: Harrison, 4" disk 'Section Corner'

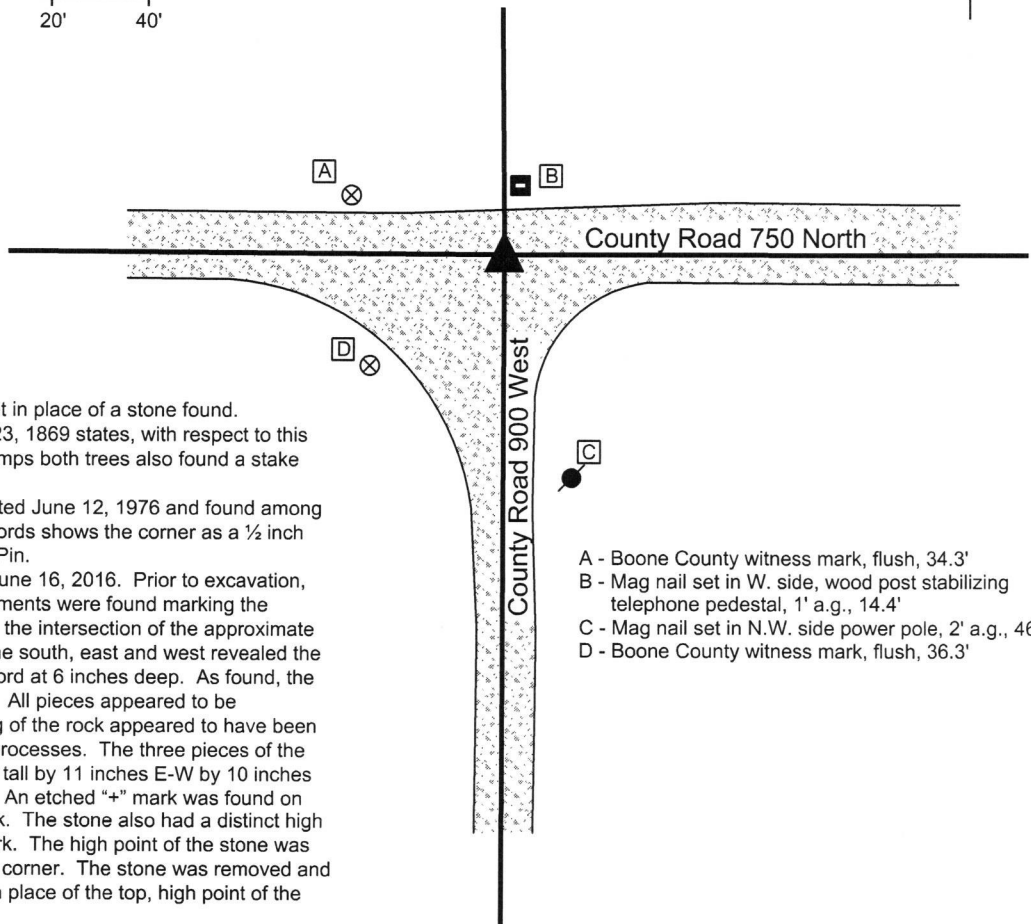
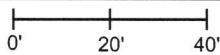
Depth: Six inches below adjacent gravel road surface

Indiana tie card references:

IN02_T20NR2W28_36 IN02_T20NR2W27_44

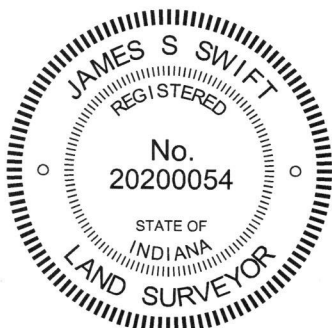
CORNER WITNESS DETAIL

SCALE 1" = 40'



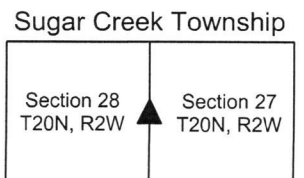
The Harrison monument was set in place of a stone found. A BCS record dated March 22-23, 1869 states, with respect to this corner, "Reestablished from stumps both trees also found a stake set. Set Rock 15,10,11 +." A tie card of unknown origin, dated June 12, 1976 and found among the Boone County Surveyor records shows the corner as a 1/2 inch I.P., presumably indicating Iron Pin. This corner was excavated on June 16, 2016. Prior to excavation, no metal or other artificial monuments were found marking the corner. Excavation centered on the intersection of the approximate centers of the county roads to the south, east and west revealed the stone described in the 1869 record at 6 inches deep. As found, the stone was in 3 separate pieces. All pieces appeared to be undisturbed and the fragmenting of the rock appeared to have been caused by natural freeze-thaw processes. The three pieces of the stone combined were 15 inches tall by 11 inches E-W by 10 inches N-S, matching the 1869 record. An etched "+" mark was found on the north sloping side of the rock. The stone also had a distinct high point, in line with the etched mark. The high point of the stone was held as the exact position of the corner. The stone was removed and a Harrison monument was set in place of the top, high point of the stone, as originally found. This corner was originally established in 1829.

- A - Boone County witness mark, flush, 34.3'
- B - Mag nail set in W. side, wood post stabilizing telephone pedestal, 1' a.g., 14.4'
- C - Mag nail set in N.W. side power pole, 2' a.g., 46.6'
- D - Boone County witness mark, flush, 36.3'



Kenneth E. Hedge
 Kenneth E. Hedge, County Surveyor

James S. Swift
 James S. Swift, IN LS 20200054
 March 23, 2017



PHOTOGRAPHIC DOCUMENTATION

Date of photography: June 16, 2016

The stone as it was originally exposed, showing the etched "+" mark on top.



The three parts of the stone, after exposing all three components of the broken rock.



View from the north, looking across the stone and south along C.R. 900 East.



View from the east, looking across the stone and west along C.R. 750 North.



For details and documentation, refer to related sheet "Section Corner Record."

SECTION CORNER RECORD

NW 750-1000

BOONE COUNTY SURVEYOR'S OFFICE

State Plane grid coordinates NAD83 (2011):

Corner (post): North: 1785409.01 East: 3071888.65 (U.S. survey feet)

Witness (rebar): North: 1785409.01 East: 3071888.15 (U.S. survey feet)

Corner Monument: Wood Corner Post

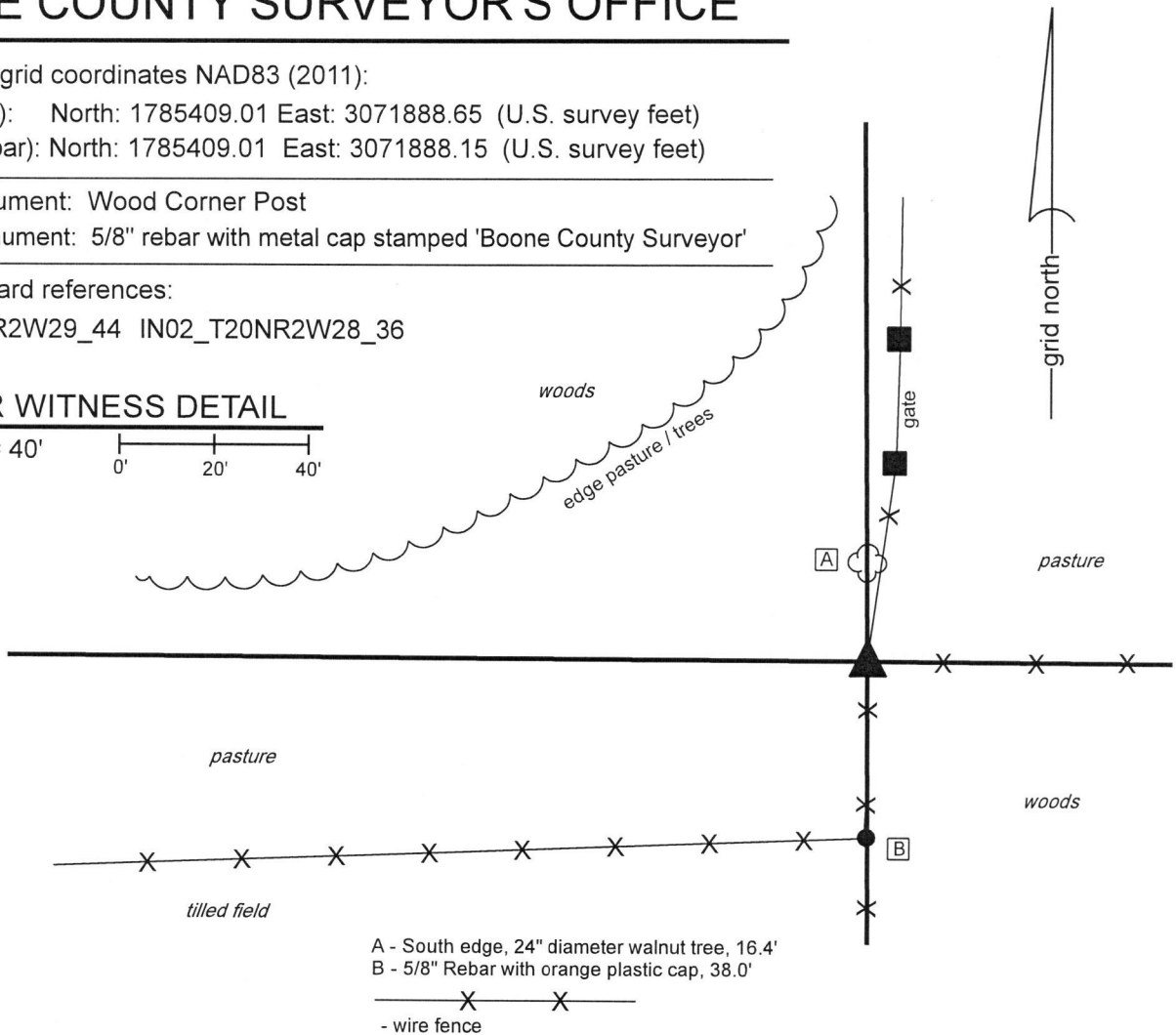
Witness Monument: 5/8" rebar with metal cap stamped 'Boone County Surveyor'

Indiana tie card references:

IN02_T20NR2W29_44 IN02_T20NR2W28_36

CORNER WITNESS DETAIL

SCALE 1" = 40'

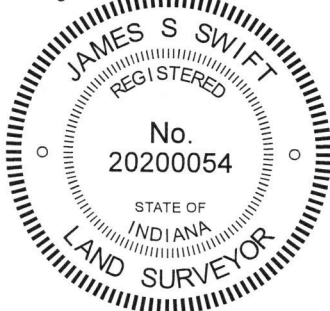


The post marking the corner was found in place. The 5/8 inch diameter capped rebar situated against the west edge of the post is intended to act as a witness to the corner and is not intended to mark the corner. The rebar is 0.2 foot west of the west edge of the post and 0.5 foot west of the center of the post.

No specific references to this corner were found in the BCS Surveyor's Record beyond the original establishment of the corner as a wood post in 1829. No recent BCS tie cards or recorded surveys were found referencing the corner. The description of land adjoining the corner to the west, found in Instrument 0003665 in the Office of the Boone County Recorder, calls the corner as a wood corner post 37.82 feet north of a 5/8 inch rebar bearing an orange plastic cap marked "W.J. Hudson, RLS 880019."

Excavation was performed at this corner on October 25, 2018. Prior to excavation, a wood corner post was found with standing fencing to the east, south and northeast with fencing cut-off toward the west. The post does not appear to be ancient but is clearly older than the posts for the fencing to the south and northeast. The rebar called for in the aforementioned land description was found 38 feet south of the center of the post. The rebar was slightly disturbed with an orange plastic cap (markings illegible), very close to the record distance south of the post. A stone found sitting on top of the ground, barely embedded, at the north edge of the post did not bear the characteristics of a stone purposely set to mark the corner. A small rock was found below grade at the northwest edge of the post, but appeared to be acting as a brace to the post rather than a purposely set corner stone. No other stones were found around the post.

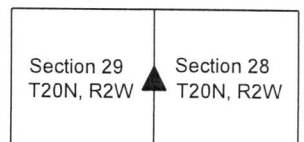
The position of the post fits well with the relative positions of proximate corners and fits well with the deed call for the rebar to the south. With no stones found which appear to be purposely set corner stones, the post was accepted as providing the best available evidence of the corner and was held as marking the corner.



Kenneth E. Hedge
 Kenneth E. Hedge, County Surveyor

James S. Swift
 James S. Swift, IN LS 20200054
 December 12, 2018

Sugar Creek Twp



SECTION CORNER RECORD

NW 800-900

BOONE COUNTY SURVEYOR'S OFFICE

State Plane grid coordinates NAD83 (2011):

North: 1788040.53 East: 3077211.58 (U.S. survey feet)

Type of monument: 36" length of 5/8" diameter rebar with aluminum cap stamped 'Boone County Surveyor'

Depth: Seven inches below surrounding ground

Indiana tie card references:

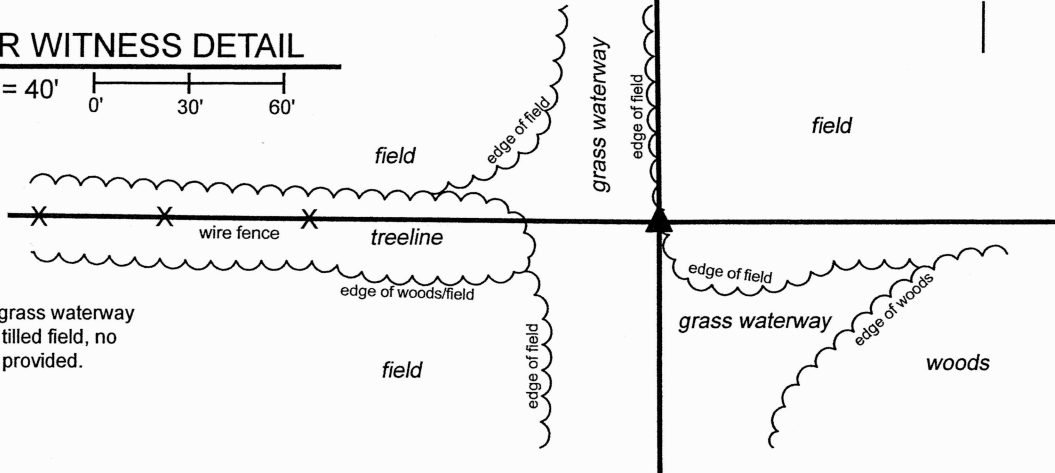
IN02_T20NR2W22_72 IN02_T20NR2W21_80

IN02_T20NR2W28_08 IN02_T20NR2W27_00

CORNER WITNESS DETAIL

SCALE 1" = 40'

0' 30' 60'



Corner falls in a grass waterway on the edge of a tilled field, no distance ties are provided.

The rebar with Boone County Surveyor cap was set in a computed position.

No specific descriptions of this corner were found in the BCS Surveyor's Record beyond the original establishment of the corner as a wood post in 1829. The corner is mentioned as the terminal point of measurements in an entry dated March 29-31, 1858. No recent BCS tie cards or surveys recorded in the Boone County Recorder's Office were found referencing the corner.

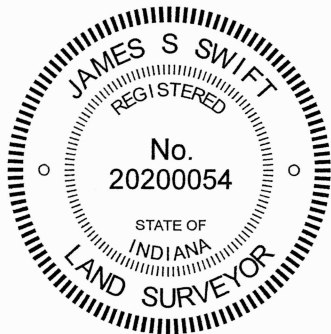
Reconnaissance was performed at this corner and adjacent areas on several occasions from 2018 to 2023. The corner falls on the edge of a grass waterway and no specific evidence was found in the immediate vicinity of the corner. However, ample physical evidence in the form of existing fences and corner posts were found to the east and west to be able compute a reliable position for the corner.

It is noted that the east-west dimensions of the sections in this immediate vicinity do not match well with dimensions reported in the original federal field notes, and that analysis of this area must take into account the variations in E-W distances. After analyzing the relevant deeds and available evidence, the following solution was held to determine the position of the corner: a line was drawn from the quarter corner one-half mile west (BCS Corner NW 800-950) along a line determined by standing E-W fence found from 100 feet west to 350 feet west of the corner. The line was extended east a distance which is double the distance from said Corner NW 800-950 to a wood corner post found providing evidence of the southwest corner of the southeast quarter of the southeast quarter of Section 21. The corner post itself is 9 feet north of the straight line prolonged to determine the subject corner. The fence is along the line from 100 feet to 350 feet west of the subject corner, but bears north as it bears west toward the corner post. This position fit quite well with the relative position of a wood corner post found providing evidence of the southeast corner of the west half of the southeast quarter of the southwest quarter of Section 22 and works reasonably well, within a few feet, of a corner post marking a title corner which is implied to be 94 rods 6-1/2 links east of the subject corner, and works with deed distances of 48 rods to an existing drainage channel. It is noted that both of the last mentioned posts are approximately 4 feet south of a straight line connecting the subject corner with the corner 1/2 mile east (see BCS Corner NW 800-850). The computed position does not work well with a north-south fence which, per deeds, should be approximately 20 rods east of the corner, but does work with the other found corner posts. Based on our analysis, the computed position represents the best-fit position with respect to the available evidence. As noted, east-west distances in this area vary from those reported in the original federal field notes. An effort to reconcile those distances would result in establishing corners at variance with the available evidence in the form of found corner posts. As discussed above, fences to the east and west do not line up well in the N-S dimension. Professional judgment and use of existing evidence is recommended over mathematical solutions when determining dependent corners in this area.

The computed position for the corner falls along the edge of an existing grass waterway. A Harrison monument is likely to be destroyed by agricultural equipment if set in this position. Hence, a 36-inch length of rebar was buried 7 inches deep on the edge of the waterway.

Sugar Creek Township

| | |
|-------------------------|-------------------------|
| Section 21 T20N, R2W | Section 22 T20N, R2W |
| Section 28 T20N, R2W | Section 27 T20N, R2W |



Carol Cunningham
Carol Cunningham, County Surveyor

James S. Swift
James S. Swift, IN LS 20200054
November 14, 2023

SECTION CORNER RECORD

NW 800-950

BOONE COUNTY SURVEYOR'S OFFICE

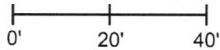
State Plane grid coordinates NAD83 (2011):
North: 1788065.72 East: 3074525.69 (U.S. survey feet)

Type of monument: Harrison, 4" disk 'Section Corner'
Depth: One inch below adjacent road surface

Indiana tie card references:
IN02_T20NR2W21_76 IN02_T20NR2E28_04

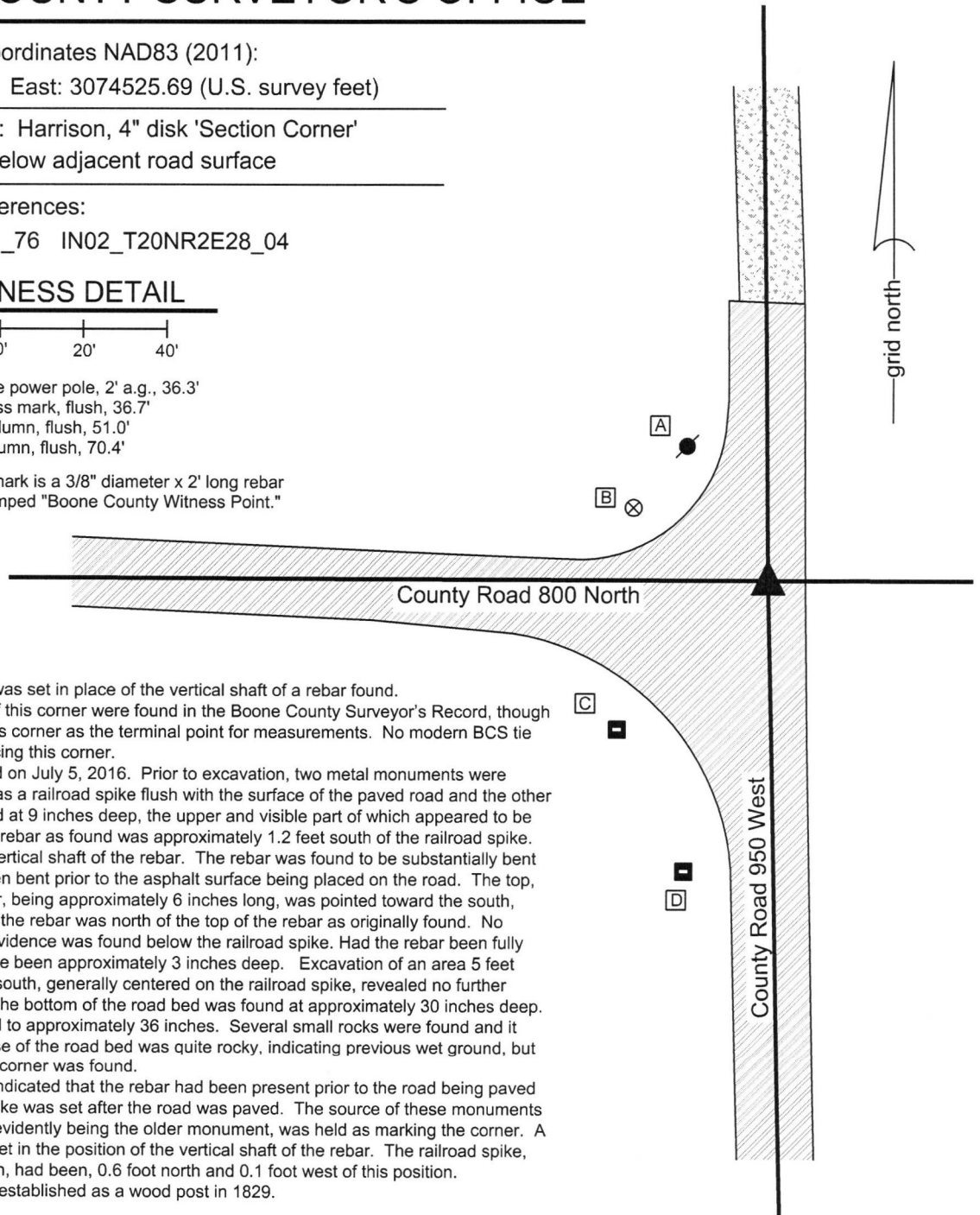
CORNER WITNESS DETAIL

SCALE 1" = 40'



- A - Mag nail set in S. side power pole, 2' a.g., 36.3'
- B - Boone County witness mark, flush, 36.7'
- C - N.W. corner brick column, flush, 51.0'
- D - N.E. corner brick column, flush, 70.4'

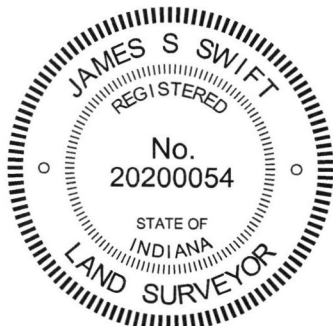
Boone County witness mark is a 3/8" diameter x 2' long rebar bearing a metal cap stamped "Boone County Witness Point."



The Harrison monument was set in place of the vertical shaft of a rebar found. No specific descriptions of this corner were found in the Boone County Surveyor's Record, though several entries do note this corner as the terminal point for measurements. No modern BCS tie cards were found referencing this corner.

Excavation was performed on July 5, 2016. Prior to excavation, two metal monuments were found. One monument was a railroad spike flush with the surface of the paved road and the other was a 5/8 inch rebar found at 9 inches deep, the upper and visible part of which appeared to be horizontal. The top of the rebar as found was approximately 1.2 feet south of the railroad spike. Excavation revealed the vertical shaft of the rebar. The rebar was found to be substantially bent and appeared to have been bent prior to the asphalt surface being placed on the road. The top, horizontal part of the rebar, being approximately 6 inches long, was pointed toward the south, hence the vertical shaft of the rebar was north of the top of the rebar as originally found. No monumentation or other evidence was found below the railroad spike. Had the rebar been fully vertical, the top would have been approximately 3 inches deep. Excavation of an area 5 feet east-west by 7 feet north-south, generally centered on the railroad spike, revealed no further evidence of the corner. The bottom of the road bed was found at approximately 30 inches deep. Excavation was performed to approximately 36 inches. Several small rocks were found and it was observed that the base of the road bed was quite rocky, indicating previous wet ground, but no further evidence of the corner was found.

The evidence in the field indicated that the rebar had been present prior to the road being paved and clearly the railroad spike was set after the road was paved. The source of these monuments is not known. The rebar, evidently being the older monument, was held as marking the corner. A Harrison monument was set in the position of the vertical shaft of the rebar. The railroad spike, removed during excavation, had been, 0.6 foot north and 0.1 foot west of this position. This corner was originally established as a wood post in 1829.



Kenneth E. Hedge
Kenneth E. Hedge, County Surveyor

James S. Swift
James S. Swift, IN LS 20200054

March 23, 2017

Sugar Creek Township

Section 21
T20N, R2W

▲
Section 28
T20N, R2W

SECTION CORNER RECORD

NW 800-1000

BOONE COUNTY SURVEYOR'S OFFICE

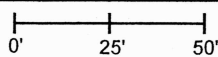
State Plane grid coordinates NAD83 (2011):
North: 1788072.85 East: 3071886.97 (U.S. survey feet)

Type of monument: Harrison, 4" disk 'Section Corner'
Depth: One inch below adjacent road surface

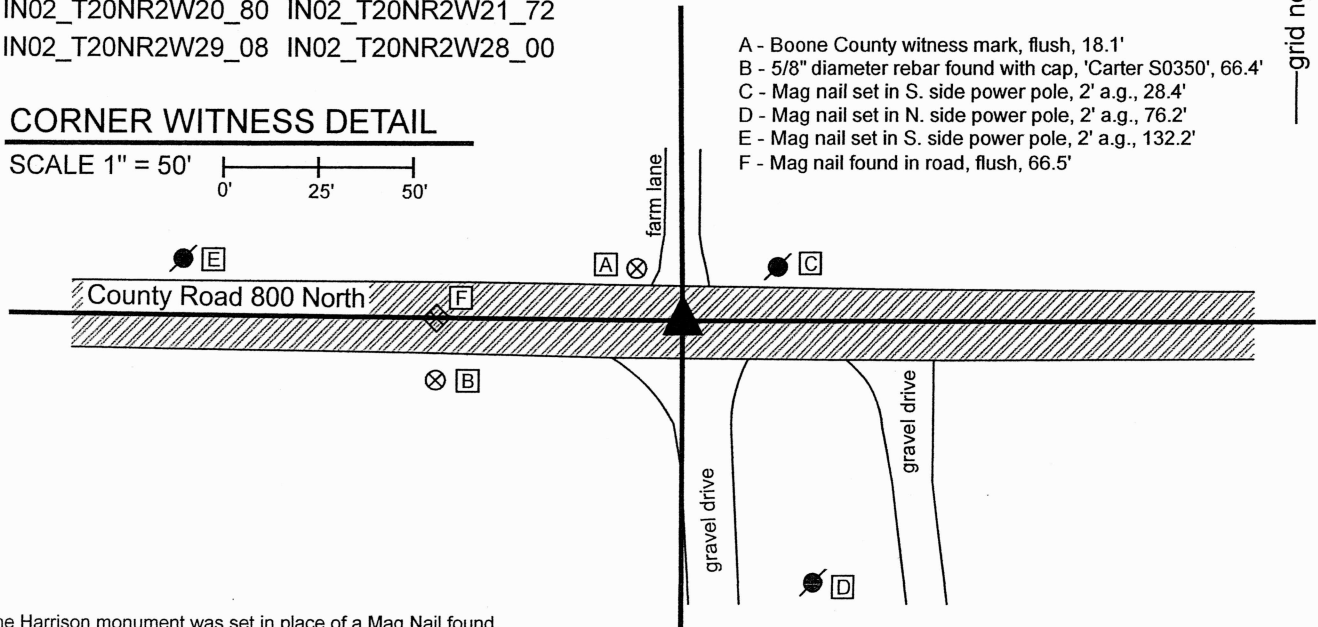
Indiana tie card references:
IN02_T20NR2W20_80 IN02_T20NR2W21_72
IN02_T20NR2W29_08 IN02_T20NR2W28_00

CORNER WITNESS DETAIL

SCALE 1" = 50'



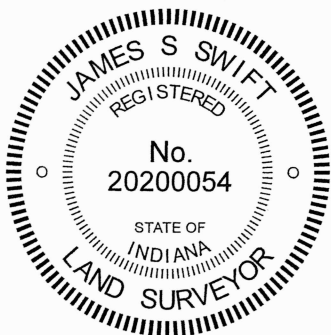
- A - Boone County witness mark, flush, 18.1'
- B - 5/8" diameter rebar found with cap, 'Carter S0350', 66.4'
- C - Mag nail set in S. side power pole, 2' a.g., 28.4'
- D - Mag nail set in N. side power pole, 2' a.g., 76.2'
- E - Mag nail set in S. side power pole, 2' a.g., 132.2'
- F - Mag nail found in road, flush, 66.5'



The Harrison monument was set in place of a Mag Nail found. A BCS Record of February 21-22, 1878, states, with respect to this corner, "Reestablished at intersection of lines. Set Rock 14,11,10." No recent BCS tie cards were found referencing this corner, nor were any surveys recorded in the Office of the Boone County Recorder found referencing the corner. A deed description found in Instrument 2022004724 calls for a Harrison monument at the corner, but no Harrison monument existed at this corner prior to November 10, 2023. A deed description found in Instrument 200800007583 does not call for the corner, but does call for the corners to the west (See BCS Corner NW 800-1050, and calls for an existing fence along the east line of the west half of northwest quarter of Section 27. No survey was found which is the basis of this description, but based on the manner of description and monuments found marking the corners, it is believed that this description was created by the late Jerry L. Carter, LS No. S0350. It is also believed most likely that the found Mag nail was set by Carter as part of his survey, or perhaps it was found by Carter and held, as the nail fits precisely with the geometry of the description. Mr. Carter's surveys are not currently available.

Excavation was performed at this corner on November 10, 2023. Prior to excavation, the mag nail believed to have been set or held by Jerry Carter was found. The position of this nail fit precisely with evidence of the east line of the west half of the northwest quarter of Section 27 and fit reasonably well with the calls in the deed found in Instrument 2022004724. The nail also works reasonably well, in the E-W dimension with the corner to the east (see BCS Corner NW 800-950) with respect to original federal distances. However, the distance between the nail and the corner to the west (BCS Corner NW 800-1050) is approximately 60 feet longer than the distance to the east. Also, the position of the nail does not work well with distance reported in the 1878 BCS Record, though those distances are at significant variance with the original federal notes. This appears to be the result of the fact that more land exists, E-W, in this area, than is called for in the original federal notes. Whether this is due to a scrivener's error or perhaps an extra chain measured but not reported in the original federal survey, is not known. If the corner were established at approximately half-way between the corners to the east and west, the position would agree better with the 1878 distances. However, no evidence was found to support excavating that far west, which would be as much as 30 feet west of the found nail.

Excavation of a 5-foot by 5-foot square centered on the nail did not reveal further evidence of the corner. Excavation was performed to at least 20 inches deep, several inches below the bottom of the road bed. The stone called-for in the 1878 BCS record was not found. As noted above, this stone may be up to 30 feet west of this position. Practical realities of excavating in public roadways do not support excavation to that extent and holding the corner that far west would not work with the available evidence. The preponderance of available evidence, particularly the north-south fence 1/4 mile east and the existing deed calls noted above, supports the nail as a reasonable position for the corner. The nail was held as marking the corner and a Harrison monument was set in place of the nail on November 10, 2023.



Carol Cunningham
 Carol Cunningham, County Surveyor

James S. Swift
 James S. Swift, IN LS 20200054
 November 14, 2023

Sugar Creek Township

| | |
|-------------------------|-------------------------|
| Section 20 T20N, R2W | Section 21 T20N, R2W |
| Section 29 T20N, R2W | Section 28 T20N, R2W |