

# SECTION CORNER RECORD

NE-100-800

## BOONE COUNTY SURVEYOR'S OFFICE

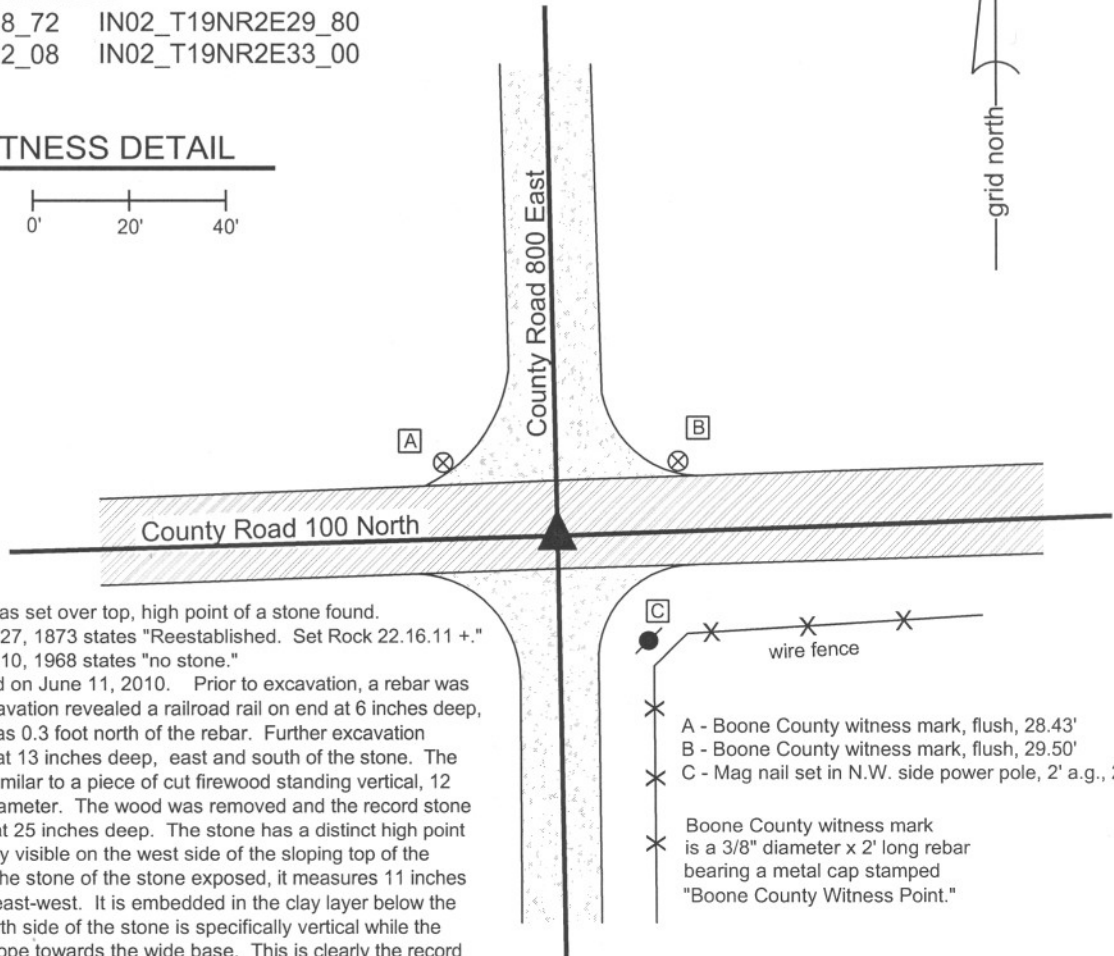
State Plane grid coordinates NAD83 (NSRS 2007):  
 North: 1751650.147 East: 3167124.34 (U.S. survey feet)

Type of monument: Harrison, 4" disk 'Section Corner'  
 Depth: One inch below adjacent road surface

Indiana tie card references:  
 IN02\_T19NR2E28\_72 IN02\_T19NR2E29\_80  
 IN02\_T19NR2E32\_08 IN02\_T19NR2E33\_00

### CORNER WITNESS DETAIL

SCALE 1" = 40'



The harrison monument was set over top, high point of a stone found.  
 A BCS record dated June 27, 1873 states "Reestablished. Set Rock 22.16.11 +."  
 A BCS tie card dated July 10, 1968 states "no stone."  
 This corner was excavated on June 11, 2010. Prior to excavation, a rebar was found at the surface. Excavation revealed a railroad rail on end at 6 inches deep, the top, center of which was 0.3 foot north of the rebar. Further excavation revealed a piece of wood at 13 inches deep, east and south of the stone. The piece of wood appeared similar to a piece of cut firewood standing vertical, 12 inches long by 3 inches diameter. The wood was removed and the record stone was found directly below at 25 inches deep. The stone has a distinct high point and an etched "+" is clearly visible on the west side of the sloping top of the stone. With 18 inches of the stone of the stone exposed, it measures 11 inches north-south by 14 inches east-west. It is embedded in the clay layer below the road and vertical. The north side of the stone is specifically vertical while the other sides of the stone slope towards the wide base. This is clearly the record stone from 1873. The top high point of the stone was held as marking the corner. The etched "+" is slightly west of the high point, but it has been observed that the markings on the stones set in the late 1800s often appear to be more of a identifying mark than a positional mark. The rebar (source unknown) and the rail (most likely set in 1968) were both removed during excavation. The stone was left in place and the harrison monument was set over the top, high point of the stone. The harrison monument is 2.2 feet east and 0.8 foot south of the position of the rebar found prior to excavation.  
 This corner was originally established as a wood post in July, 1821.

- A - Boone County witness mark, flush, 28.43'
  - B - Boone County witness mark, flush, 29.50'
  - C - Mag nail set in N.W. side power pole, 2' a.g., 27.10'
- Boone County witness mark is a 3/8" diameter x 2' long rebar bearing a metal cap stamped "Boone County Witness Point."



*Kenneth E. Hedge*  
 Kenneth E. Hedge, County Surveyor

*James S. Swift*  
 James S. Swift, IN LS 20200054  
 July 22, 2011

Union Township

Section 29 T19N, R2E	Section 28 T19N, R2E
Section 32 T19N, R2E	Section 33 T19N, R2E

PHOTOGRAPHIC DOCUMENTATION

Date of photography: June 11, 2010

View of the piece of wood above the stone.



View of the stone as first exposed.



View of the stone more fully exposed.



View of the from the west, looking across the stone in shadows, along C.R. 100 North. Note the piece of wood visible on the safety cone.



View of the stone from above.



For details and documentation, refer to related sheet "Section Corner Record."

# SECTION CORNER RECORD

# NE 100-850

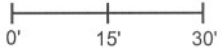
## BOONE COUNTY SURVEYOR'S OFFICE

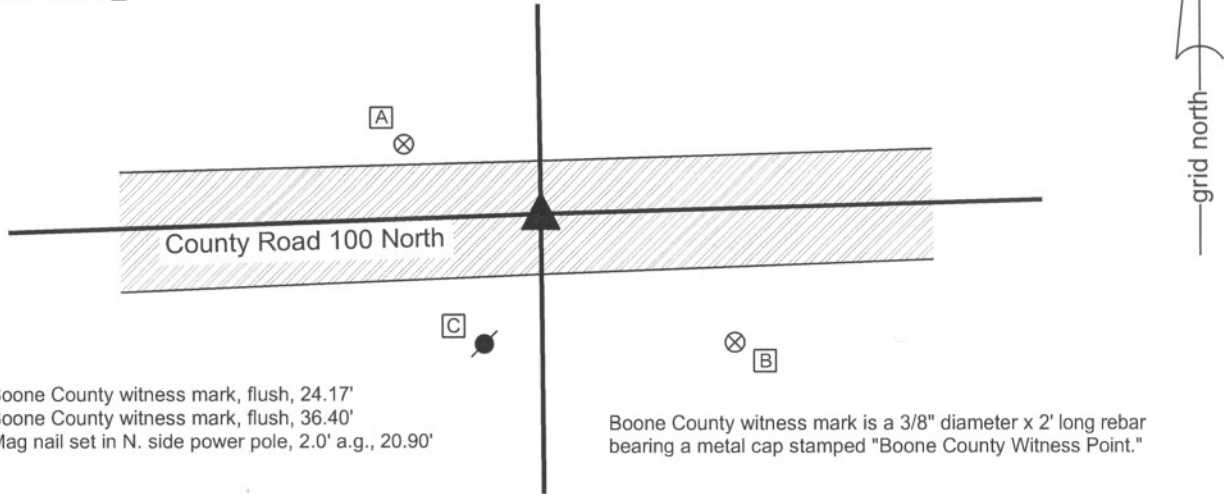
State Plane grid coordinates NAD83 (NSRS 2007):  
North: 1751742.82 East: 3169793.48 (U.S. survey feet)

Type of monument: Harrison, 4" disk 'Section Corner'  
Depth: One inch below adjacent road surface

Indiana tie card references:  
IN02\_T19NR2E28\_76  
IN02\_T19NR2E33\_04

### CORNER WITNESS DETAIL

SCALE 1" = 30' 



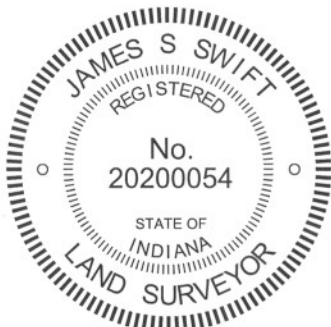
The harrison monument was set over a stone found.

A BCS record dated June 28, 1873 states "Reestablished from Poplar Stump. Rock was gone. Set a Rock 10.6 by 5 in. marked + on side and top. One under it 8.6.5 +." A BCS tie card dated July 10, 1968 states "No stone."

This corner was excavated on July 21, 2010. Prior to excavation, a railroad rail was visible at the surface. Though the 1968 tie card does not make any mention of a monument other than "no stone", it is considered most likely that the rail was set at that time. Prior to excavation, analysis of the position of the rail relative to other monuments indicated that the rail was probably further east than the stone set in 1873. The stone at the quarter corner one mile west of the subject corner was set by David Burns, County Surveyor, in 1862. 11 years later, in April, 1873 the same surveyor set a stone at the subject corner and at the corner 1/2 mile west. The records from April 27-28, 1873 shows measurements between the three corners. Prior to excavation the two stones to the west had already been found and confirmed as the record stones. The measured distance between the stones at NE-100-750 and NE-100-800 was 13.1 feet longer than the 1873 record distance. The measured distance between the stone at NE-100-750 and the rail at the subject corner was 18.5 feet longer than the record distance. The fact that the half-mile measurement was long is consistent with comparisons of record and measured distances in other areas. However, it is expected that the same crew measuring on flat ground on two successive days would replicate their measurements with reasonable precision. Hence, prior to excavation, it was strongly suspected that the record stone may be found approximately 5 feet west of the rail. As noted below, this expectation was upheld and the stone was found approximately 4 feet west of the rail.

During excavation the railroad rail was removed and no other evidence of the corner was found around the rail. An iron pipe was found at 1 inch deep approximately 3.5 feet west of the rail. The pipe, 1 inch diameter by 30 inches long, was removed. A stone was found at 1 foot deep, 15 inches north of the pipe. The stone was situated in fill material, not embedded in the clay and measured 11 inches N-S by 4 inches E-W by 8 inches tall. This stone was not the record stone. Two stones were found below this stone, situated against each other. The westerly of these two stones was clearly the record top stone described in 1873. The easterly stone appeared to be a sort of brace for the record stone. The west, record stone had a vaguely visible etched "+" on top. Both stones were removed and measured. The west stone was 10.5 inches tall by 5 inches E-W by 6 inches N-S. Another etched "+" is clearly visible on the east side. Another stone was found directly below the record stone but was not measured. The top high point and top etched "+" of the top record stone were held as marking the corner and the harrison monument was set at this position. The record stone and harrison monument are 0.8 feet north and 3.8 feet west of the position of rail, and 1.4 feet north of the position of the iron pipe. The rail, pipe and the first three stones mentioned, including the top record stone, were removed during excavation. The lower stone was left in place and remains directly below the harrison monument.

This corner was originally established as a wood post in July, 1821.



*Kenneth E. Hedge*  
Kenneth E. Hedge, County Surveyor

*James S. Swift*  
James S. Swift, IN LS 20200054  
July 25, 2011

Union Township

Section 28  
T19N, R2E

Section 33  
T19N, R2E

PHOTOGRAPHIC DOCUMENTATION

Date of photography: July 21, 2010

The iron pipe found west of the rail.



The stone found in the fill material.



View of the top record stone and brace rock from the east, looking west along C.R. 100 North.



The top record stone and the rock against which it was braced.



View of the top record stone and brace rock from above.



For details and documentation, refer to related sheet "Section Corner Record."

# SECTION CORNER RECORD

NE 100-900

## BOONE COUNTY SURVEYOR'S OFFICE

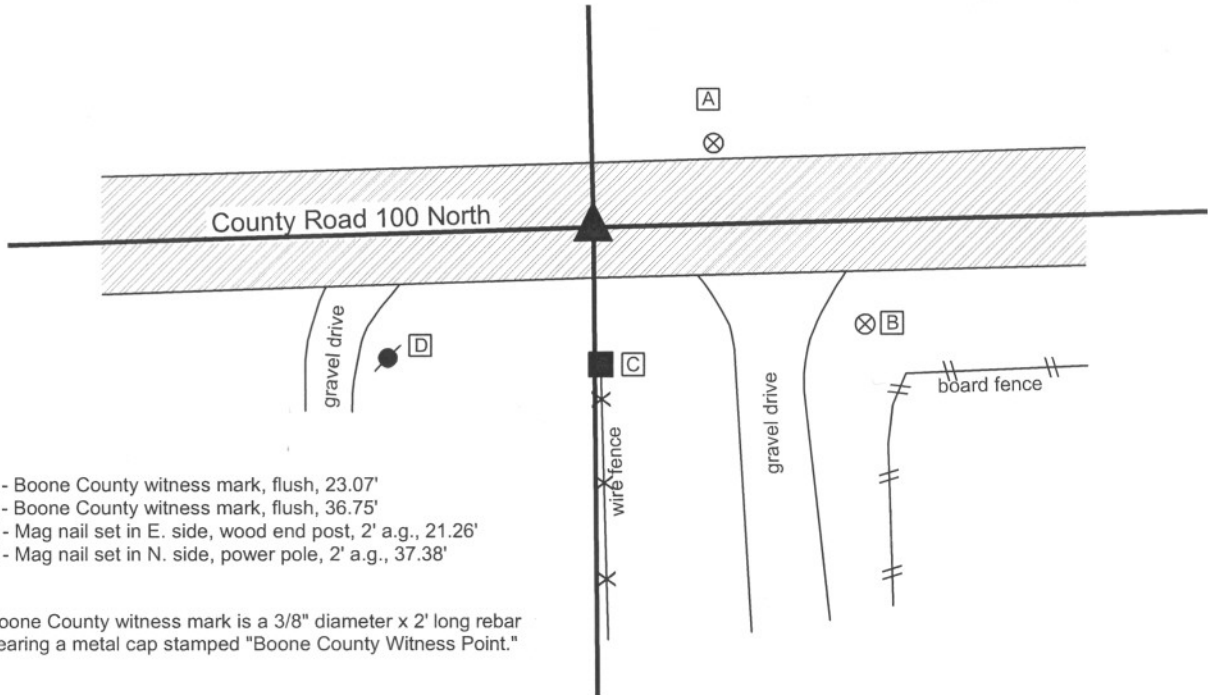
State Plane grid coordinates NAD83 (NSRS 2007):  
 North: 1751821.74 East: 3172457.97 (U.S. survey feet)

Type of monument: Harrison, 4" disk 'Section Corner'  
 Depth: One inch below adjacent road surface

Indiana tie card references:  
 IN02\_T19NR2E27\_72      IN02\_T19NR2E28\_80  
 IN02\_T19NR2E33\_08      IN02\_T19NR2E34\_00

### CORNER WITNESS DETAIL

SCALE 1" = 30'  
 0'      15'      30'



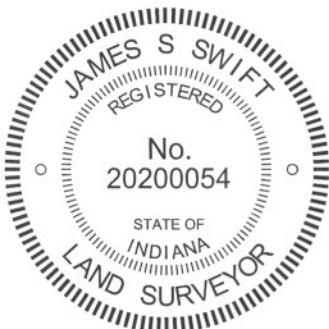
- A - Boone County witness mark, flush, 23.07'
- B - Boone County witness mark, flush, 36.75'
- C - Mag nail set in E. side, wood end post, 2' a.g., 21.26'
- D - Mag nail set in N. side, power pole, 2' a.g., 37.38'

Boone County witness mark is a 3/8" diameter x 2' long rebar bearing a metal cap stamped "Boone County Witness Point."

The harrison monument was set over a stone found.

A BCS tie card dated June 14, 1971 states "no stone, RRR put in." No specific description of this corner was found in the old BCS Surveyor's Record. This corner was excavated on August 23, 2010. Prior to excavation, a nail was found at the surface. Excavation revealed 3 rebars below the nail, generally surrounding the position of the nail. A railroad rail on end was found at 9 inches deep, directly below the position of the nail. Further excavation revealed three stones. The top two stones were found at 21 inches deep, situated next to each other, both embedded fully in the clay layer below the road. The north stone was 8x6x5 inches. The south stone was 10x7x7 inches. The third stone was below the top two, approximately centered between them, measuring 7x6x5 inches and situated at 27 inches deep. The stones were in line with the fence to the south and at the center of the road. The bottom stone is 1.8 feet south and 0.8 feet west of the nail and railroad rail, both of which were removed during excavation, along with the rebars and top two stones. The statement "no stone" on the 1971 tie card is clearly incorrect and also indicates that this crew was searching for, but did not find a corner stone. The found stones fit most characteristics of section corner stones, being embedded in the clay below the road and at the intersection of the center of the road with the prolonged line of the fence to the south. The situation of two stones next to each other above a third stones is not typical, but the stones clearly appeared to have been purposely set to mark the corner. The top center point of the lower stone was held as marking the corner and the harrison monument was set directly over this point. The lower stone was left in place and all other monuments were removed during excavation.

This corner was originally established as a wood post in July, 1821.



*Kenneth E. Hedge*  
 Kenneth E. Hedge, County Surveyor

*James S. Swift*  
 James S. Swift, IN LS 20200054  
 July 25, 2011

Union Township

Section 28 T19N, R2E	Section 27 T19N, R2E
Section 33 T19N, R2E	Section 34 T19N, R2E

PHOTOGRAPHIC DOCUMENTATION

Date of photography: August 23, 2010

The railroad rail exposed.



The north top stone.



The south top stone (right) and the lower stone as first exposed.



View from the north, looking across the lower stone towards the post and trees to the south.



The lower stone.



For details and documentation, refer to related sheet "Section Corner Record."

# SECTION CORNER RECORD

NE 150-800

## BOONE COUNTY SURVEYOR'S OFFICE

State Plane grid coordinates NAD83 (NSRS 2007):

North: 1754300.64 East: 3167064.56 (U.S. survey feet)

Type of monument: Harrison, 4" disk 'Section Corner'

Depth: Six inches below the surface of the gravel road.

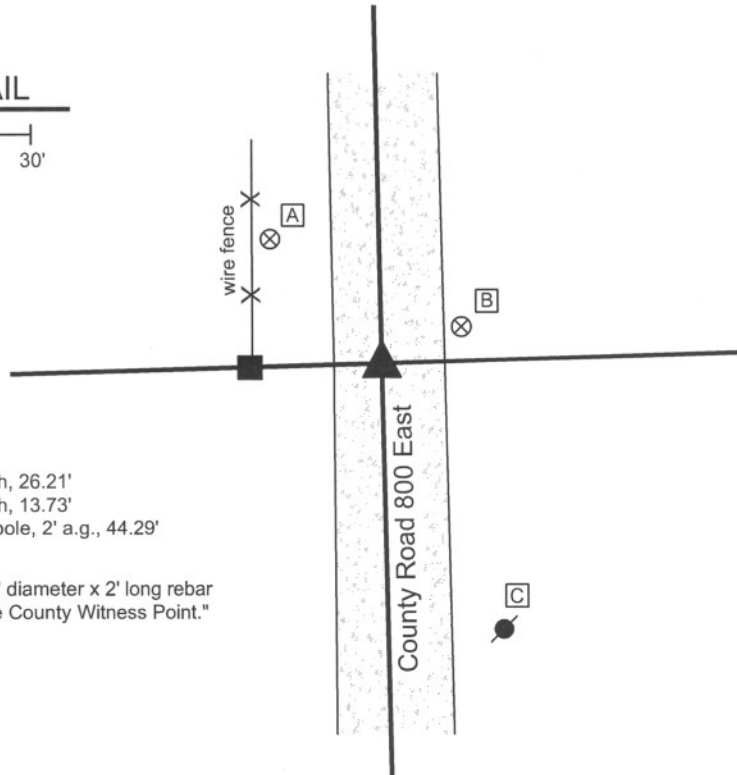
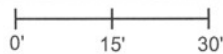
Indiana tie card references:

IN02\_T19NR2E28\_36

IN02\_T19NR2E29\_44

### CORNER WITNESS DETAIL

SCALE 1" = 30'



- A - Boone County witness mark, flush, 26.21'
- B - Boone County witness mark, flush, 13.73'
- C - Mag nail set in N.W. side power pole, 2' a.g., 44.29'

Boone County witness mark is a 3/8" diameter x 2' long rebar bearing a metal cap stamped "Boone County Witness Point."

The harrison monument was set in place of a stone found.

A BCS record of January 29, 1869 states "Re-established from the trees. Set a Rock 16.15.12 in. marked +." Field notes from April 1970 state "no stone set rail." No tie card was found for this field note. A BCS tie card dated August 23, 1974 states "No stone, found rail."

This corner was excavated on June 11, 2010. Prior to excavation the top of a section of railroad rail was visible at the surface of the gravel road and the apparent top of a large rock was found present, also at the surface of the gravel road. Excavation revealed that the rock was the record stone from the 1869 record. It measured 12 inches E-W by 15 inches N-S by approximately 16 inches tall. It was embedded in the clay layer below the road, protruding approximately 4 inches out of the clay into the road bed. Notably, the the road bed is only approximately 4 inches deep at this point. The top of the stone appeared to be worn to smoothness by a road grader. No specific marks were found on the stone and it is presumed that the mark was worn off the top of the stone by repeated scrapings of the road grader. The stone was removed and a harrison monument was set at the position of the top, center of the stone. The railroad rail, removed during excavation had been very close to the southwest edge of the stone. The position of the rail was 1 foot west and 1.3 feet south of the harrison monument.

This corner was originally established as a wood post in July, 1821.



*Kenneth E. Hedge*  
Kenneth E. Hedge, County Surveyor

*James S. Swift*  
James S. Swift, IN LS 20200054  
July 25, 2011

Union Township

Section 29 T19N, R2E	Section 28 T19N, R2E
-------------------------	-------------------------

PHOTOGRAPHIC DOCUMENTATION

Date of photography: June 11, 2010

View of the stone as first exposed.



View of the stone washed.



View from the east, showing the stone and the post on the west side of the road.



View from the south, looking across the stone and north along County Road 800 East.



For details and documentation, refer to related sheet "Section Corner Record."



# SECTION CORNER RECORD

## BOONE COUNTY SURVEYOR'S OFFICE

NE 150-900

State Plane grid coordinates NAD83 (NSRS 2007):

North: 1754476.726 East: 3172401.65 (U.S. survey feet)

Type of monument: Stone (chiseled hole on top of stone)

Depth: Approximately 8 inches below top of tilled field

Indiana tie card references:

IN02\_T19NR2E27\_36 IN02\_T19NR2E28\_44

### CORNER WITNESS DETAIL

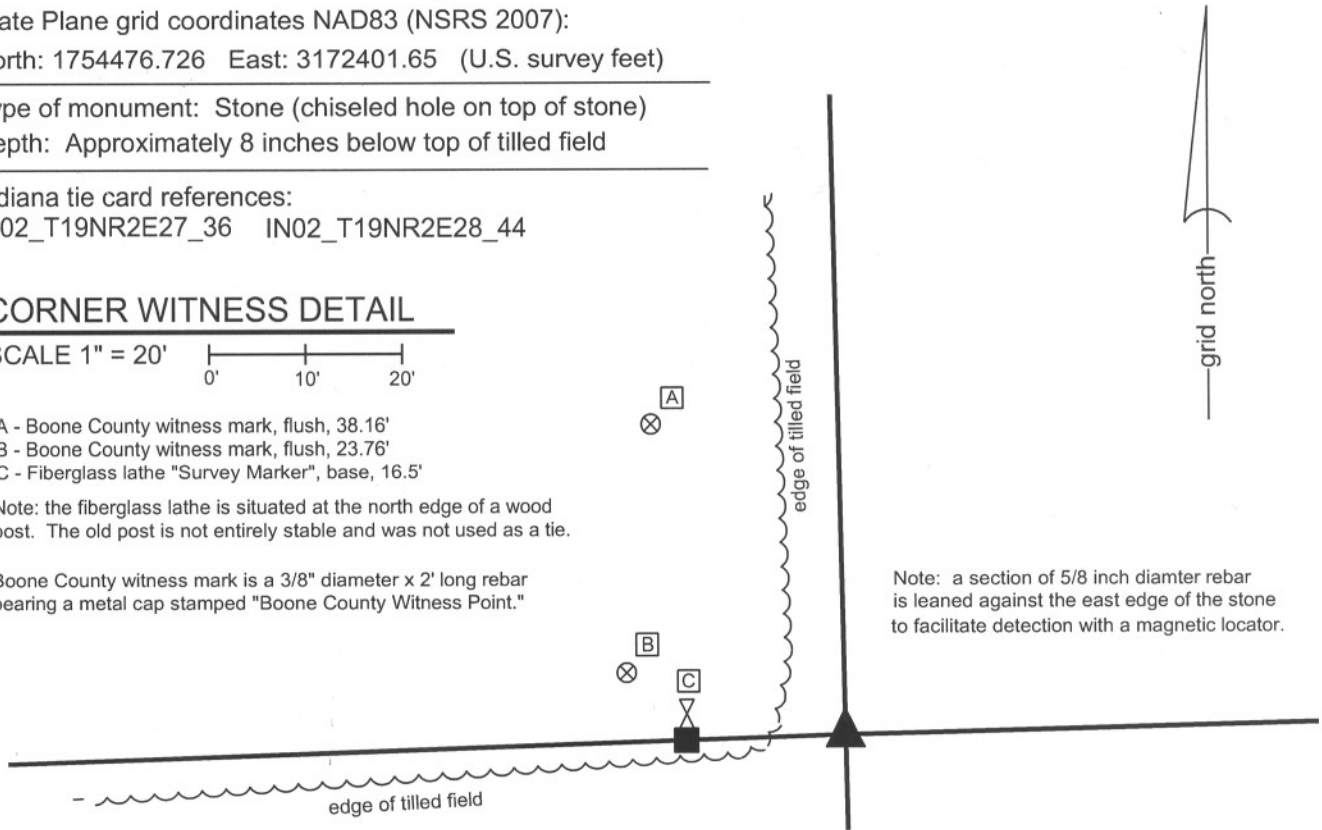
SCALE 1" = 20'

- A - Boone County witness mark, flush, 38.16'
- B - Boone County witness mark, flush, 23.76'
- C - Fiberglass lathe "Survey Marker", base, 16.5'

Note: the fiberglass lathe is situated at the north edge of a wood post. The old post is not entirely stable and was not used as a tie.

Boone County witness mark is a 3/8" diameter x 2' long rebar bearing a metal cap stamped "Boone County Witness Point."

Note: a section of 5/8 inch diameter rebar is leaned against the east edge of the stone to facilitate detection with a magnetic locator.

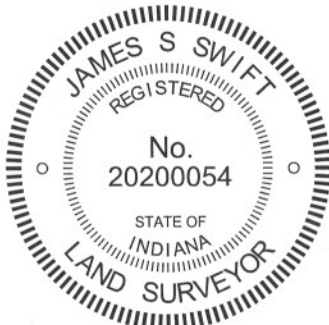


The stone was found in place.

No specific descriptions of this corner were found in the BCS Surveyor's Record. However, the corner is mentioned as the terminal point for measurements on records dated 1834, 1852, 1854 and 1868 indicating that some form of monument, most likely a stone, existed at the time of those surveys. No recent BCS tie cards were found referencing this corner. A survey by the Schneider Corporation, dated December 22, 2005, certified by Carolina L. Candler, shows the corner as being established at a mathematical split on line between the section corners to the north and south. The survey does note that a fence post lies 10.5 feet north and 18.7 feet west of the calculated position of the corner.

This corner was investigated in November, 2011. The fence post (wood) referenced in the Schnieder survey was found and was held as evidence of the east-west half section line for purposes of determining the most likely position of the corner. It is noted that the wood post appears to represent the west side of an old gate, with fence cut off towards the west and gate brackets on the east side. The fencing to the west has been removed but the post clearly represented the easterly terminus of a fence and the post is near the east end of a boundary between tilled field on the south and woods on the north. A portion of old north-south fence was found beginning approximately 450 feet north of the corner and extending to approximately 830 feet north of the corner. Holding the post as evidence of the east-west half section line and the old fence as evidence of the east line of the northeast quarter of section 28 it was evident that the corner is most likely approximately 1 rod (16.5) feet east of aforementioned wood fence post. Excavation at this position on November 18, 2011 revealed a stone found at exactly 1 rod east of the post. The corner is near the edge of a tilled field. The stone is approximately 8 inches below the surface of the tilled field and does not appear to have been disturbed by farming activities. The stone is of sandstone material and is vertical, with the bottom embedded in the clay layer below the field. The stone measures 7 inches by 7 inches near the top and is 16 inches tall on the east side. The total N-S, E-W dimensions of the stone were not measured, but it is noted that the base appears to be larger than the top. The stone fits precisely with the evidence of lines to the west and north as discussed above and the position of the stone being 1 rod from an old gate post matches patterns found at other corners throughout the county. The stone was left in place. A hole was drilled into the top, center of the stone to mark the specific position of the corner. A 30 inch length of 5/8 inch diameter rebar was placed along the east side of the stone, driven to 1 inch below the top of the stone, for purposes of finding the stone with a magnetic locator. The rebar should not be interpreted as marking the corner, but is intended to aid the field surveyor in finding the stone.

This corner was originally established as a wood post in July, 1821.



*Kenneth E. Hedge*  
 Kenneth E. Hedge, County Surveyor

*James S. Swift*  
 James S. Swift, IN LS 20200054  
 March 1, 2012

Union Township

Section 28 T19N, R2E	▲	Section 27 T19N, R2E
-------------------------	---	-------------------------

PHOTOGRAPHIC DOCUMENTATION

Date of photography: November 1 & 18, 2011

The post 1 rod west of the corner.



The stone with the east side exposed.



View from the east, looking across the stone (in shadows) and to the post 1 rod west.



Exposed stone with a hole drilled on top.



The stone with a hole drilled on top and a 5/8 inch rebar on the east side, no longer exposed.



For details and documentation, refer to related sheet "Section Corner Record."

# SECTION CORNER RECORD

NE 200-800

## BOONE COUNTY SURVEYOR'S OFFICE

State Plane grid coordinates NAD83 (NSRS 2007):

North: 1756953.64 East: 3167009.95 (U.S. survey feet)

Type of monument: Harrison, 4" disk 'Section Corner'

Depth: four inches below the adjacent gravel road surface.

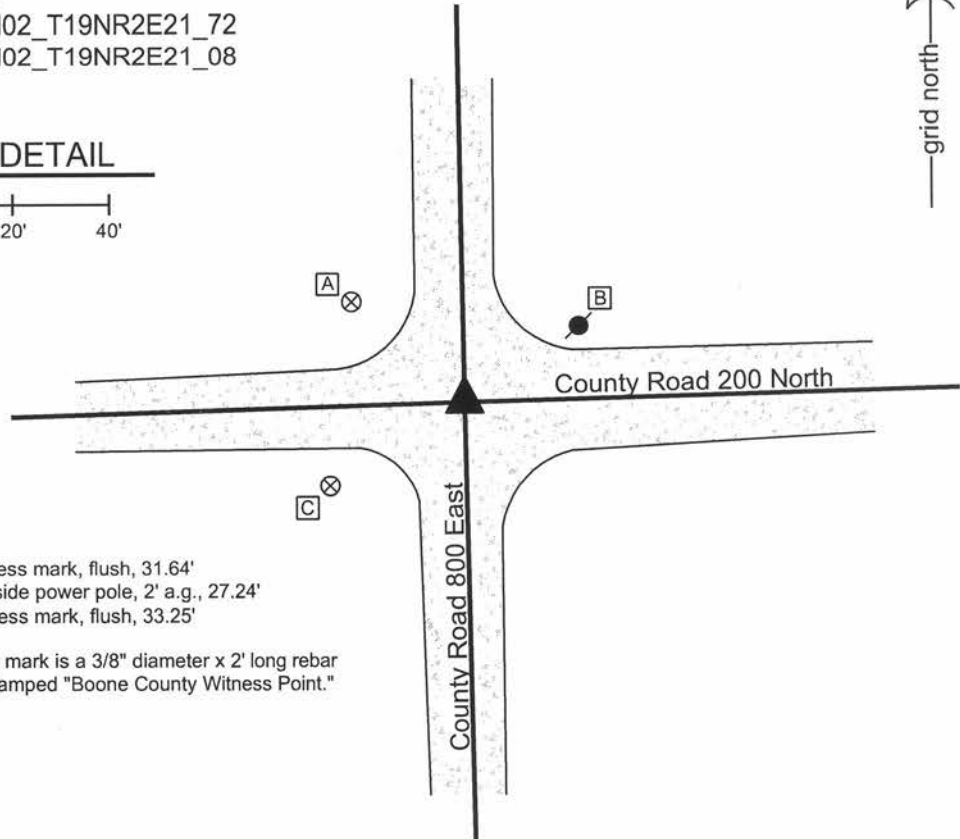
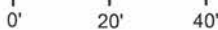
Indiana tie card references:

IN02\_T19NR2E20\_80 IN02\_T19NR2E21\_72

IN02\_T19NR2E28\_00 IN02\_T19NR2E21\_08

### CORNER WITNESS DETAIL

SCALE 1" = 40'



- A - Boone County witness mark, flush, 31.64'
- B - Mag nail set in W. side power pole, 2' a.g., 27.24'
- C - Boone County witness mark, flush, 33.25'

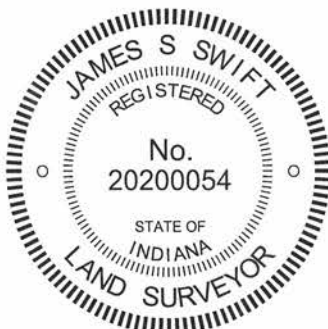
Boone County witness mark is a 3/8" diameter x 2' long rebar bearing a metal cap stamped "Boone County Witness Point."

The harrison monument was set over a stone found.

A BCS tie card dated July 8, 1974 states "found rail + sm. stone." The field notes associated with this tie card, dated June 28, 1974, states "found stone with rail." No specific descriptions of this corner were found in the old BCS Surveyor's Record. No information was found pertaining to the setting of the rail found in 1974.

This corner was excavated on June 14, 2010. Prior to excavation a section of railroad rail was found at the surface, apparently leaning substantially towards the west. Excavation revealed that the rail is leaning over the stone. The top of the rail is over the top of the stone and the stone is 14 inches deep. The rail was removed. The stone is embedded in the clay layer below the road, protruding approximately 3 inches into the bottom of the road bed. The top 16 inches of the stone were exposed and the stone remained stable upon an attempt to move it, hence it clearly extends further into the clay. At 13 inches from the top, the stone measures 14 inches N-S by 11 inches E-W. With the stone exposed, it was observed that the position of the top of the rail had been towards the west side of the stone, slightly south of the center, but had clearly been set such that the top of the rail was a reasonable indicator of the position of the stone. The position of the top of the rail, as originally found, was held as the specific location of the corner. A harrison monument was broken off at 8 inches tall and set over the stone, with the top 4 inches of the stone encased in concrete along with the harrison.

This corner was originally established as a wood post in July, 1821.



*Kenneth E. Hedge*  
 \_\_\_\_\_  
 Kenneth E. Hedge, County Surveyor

*James S. Swift*  
 \_\_\_\_\_  
 James S. Swift, IN LS 20200054  
 July 25, 2011, Revised March 18, 2013

Marion Twp

Union Twp

Section 20 T19N, R2E	Section 21 T19N, R2E
Section 29 T19N, R2E	Section 28 T19N, R2E

PHOTOGRAPHIC DOCUMENTATION

Date of photography: June 15, 2010

View from the south showing the rail leaning over the stone.



View from above showing the rail leaning over the stone.



View from above and south showing the stone after the rail had been removed.



View from the east, looking across the stone and west along County Road 200 North.



View from above and north showing the stone after the rail had been removed.



For details and documentation, refer to related sheet "Section Corner Record."

# SECTION CORNER RECORD

## BOONE COUNTY SURVEYOR'S OFFICE

NE 200-850

State Plane grid coordinates NAD83 (NSRS 2007):  
 North: 1757030.07 East: 3169680.37 (U.S. survey feet)

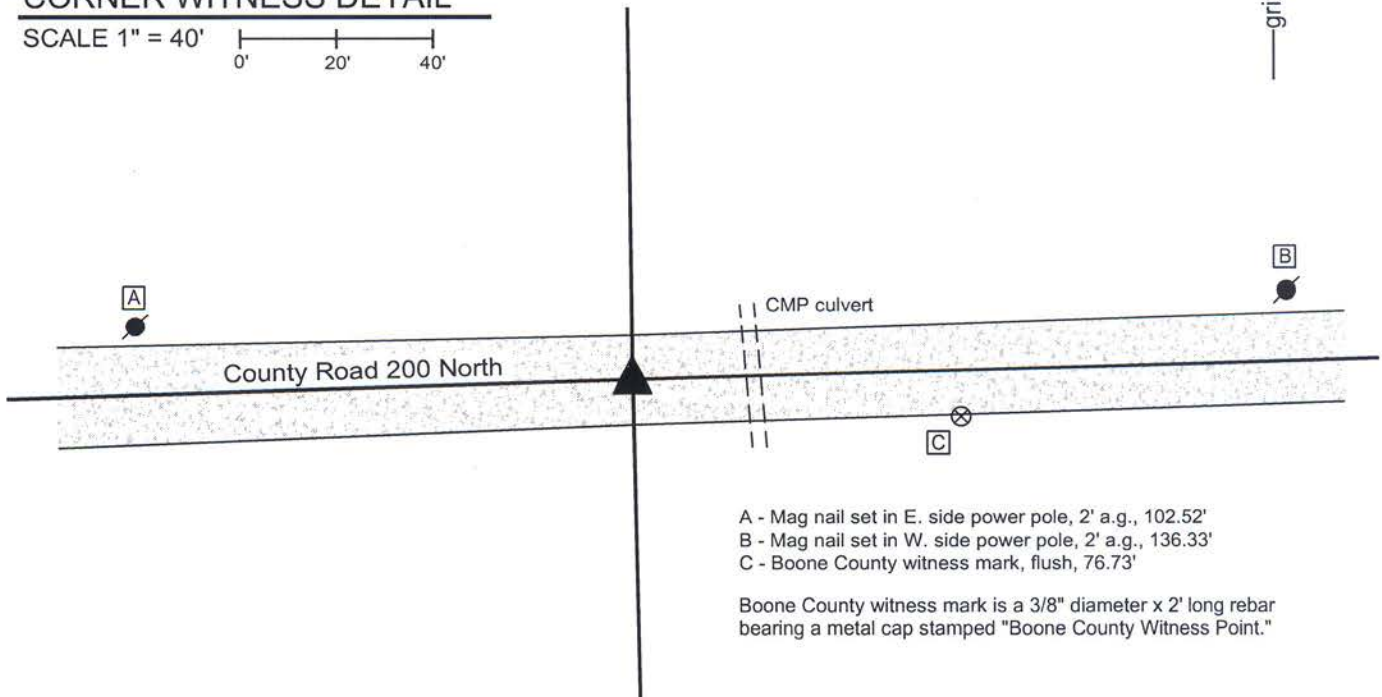
Type of monument: Harrison, 4" disk 'Section Corner'  
 Depth: six inches below adjacent gravel road surface

Indiana tie card references:  
 IN02\_T19NR2E21\_76  
 IN02\_T19NR2E28\_04



### CORNER WITNESS DETAIL

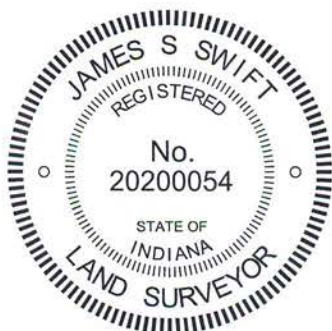
SCALE 1" = 40'  
 0' 20' 40'



- A - Mag nail set in E. side power pole, 2' a.g., 102.52'
- B - Mag nail set in W. side power pole, 2' a.g., 136.33'
- C - Boone County witness mark, flush, 76.73'

Boone County witness mark is a 3/8" diameter x 2' long rebar bearing a metal cap stamped "Boone County Witness Point."

The harrison monument was set in place of a stone found. No specific descriptions of this corner were found in the BCS Surveyor's Record. A BCS tie card dated July 8, 1974 states "wood stake found." This corner was excavated on March 30, 2011. Prior to excavation no monument was found, nor was a position for the corner able to be determined from information found in private surveys. A theoretical position for the corner was established at the midpoint of the line connecting the section corners to the east and west. Excavation at this point yielded a stone found at 12 inches deep, approximately 1 foot east of the theoretical midpoint corner position. The stone was found in a vertical orientation, being 12 inches tall by 6 inches N-S by 4 inches E-W. The bottom half of the stone was embedded in the clay layer below the road. No specific markings were found on the stone. The center of the top of the stone was held as the specific position of the corner. The stone was removed and replaced with a harrison monument. This corner was originally established as a wood post in July, 1821.



*Kenneth E. Hedge*  
 Kenneth E. Hedge, County Surveyor

*James S. Swift*  
 James S. Swift, IN LS 20200054  
 March 1, 2012, revised January 23, 2013

Marion Twp

Section 21  
 T19N, R2E

Union Twp

Section 28  
 T19N, R2E

PHOTOGRAPHIC DOCUMENTATION

Date of photography: March 30, 2011

View of the stone as exposed and embedded.



View of the stone from above.



The stone removed from the road.



The stone removed from the road.



For details and documentation, refer to related sheet "Section Corner Record."

# SECTION CORNER RECORD

NE 200-900

## BOONE COUNTY SURVEYOR'S OFFICE

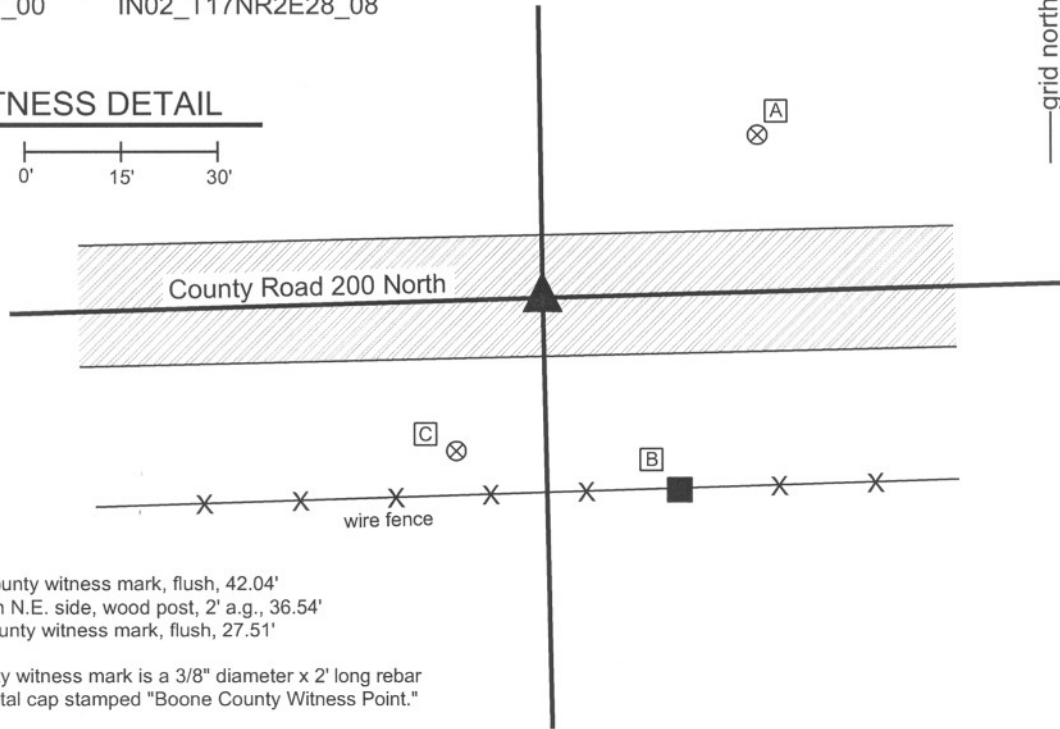
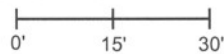
State Plane grid coordinates NAD83 (NSRS 2007):  
 North: 1757107.36 East: 3172348.82 (U.S. survey feet)

Type of monument: Harrison, 4" disk 'Section Corner'  
 Depth: One inch below adjacent road surface

Indiana tie card references:  
 IN02\_T19NR2E21\_80 IN02\_T22NR2E22\_72  
 IN02\_T17NR2E27\_00 IN02\_T17NR2E28\_08

### CORNER WITNESS DETAIL

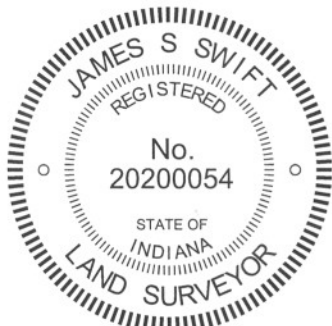
SCALE 1" = 30'



- A - Boone County witness mark, flush, 42.04'
- B - Mag set in N.E. side, wood post, 2' a.g., 36.54'
- C - Boone county witness mark, flush, 27.51'

Boone County witness mark is a 3/8" diameter x 2' long rebar bearing a metal cap stamped "Boone County Witness Point."

The harrison monument was set over a stone found.  
 A BCS of August 10-13, 1854 states "Reestablished. Set Rock 12 by 16 in. There are no bearing trees." A BCS tie card dated July 11, 1978 states "No stone found." A survey by the Schneider Corporation, dated December 22, 2005, certified by Carolina L. Candler, states "Stone found 0.6' below surface with 5/8" rebar beside (mag nail found 1.1' S, 1.2' E of stone 0.2' below surface) No B.C.S Ref. ties."  
 This corner was excavated on September 7, 2010. Prior to excavation an aluminum disk stamped with the name Schneider Corp. was found at the surface in the northwest corner of a 2 foot by 2 foot area of patched asphalt. Excavation revealed that the aluminum disk was placed upon a metal pin approximately 7 inches long. A stone was found at 7 inches deep, directly below the metal pin. The stone has a distinguishable marks on the top, which may be marks from a road grader or may be purposely etched. With 9 inches exposed the stone measures 8 inches E-W by 12 inches N-S, fully embedded in the clay layer below the road, with approximately 5 inches of the stone protruding into the bottom of the road bed. The stone was left undisturbed below 8 inches from the top and the full height of the stone was not measured. Hence, the stone was not solidly confirmed as being the record stone from 1854. It is noted that the N-S dimension does match the 1854 record and that BCS records prior to 1860 tend to note only two dimensions on a stone, typically the height and the largest horizontal dimension. The stone was held as marking the corner. A harrison monument was broken off at 6 inches tall and set directly over the stone, in the position of the disk found prior to excavation. The top of the stone was encased in concrete along with the harrison monument.  
 This corner was originally established as a wood post in July, 1821.



*Kenneth E. Hedge*  
 Kenneth E. Hedge, County Surveyor

*James S. Swift*  
 James S. Swift, IN LS 20200054  
 July 25, 2011

Marion Twp

Section 21 T19N, R2E	Section 22 T19N, R2E
-------------------------	-------------------------

Union Twp

Section 28 T19N, R2E	Section 27 T19N, R2E
-------------------------	-------------------------

PHOTOGRAPHIC DOCUMENTATION

Date of photography: September 7, 2010

View of the stone as first exposed.



View of the stone partially exposed.



View from the east, looking across the stone and west along County Road 100 North, across U.S. 421



View of the stone partially exposed.



View of the stone from above, immediately prior to the top being encased in concrete.



For details and documentation, refer to related sheet "Section Corner Record."