

SECTION CORNER RECORD

NW 700-200

BOONE COUNTY SURVEYOR'S OFFICE

State Plane grid coordinates NAD83 (2011):
North: 1782550.76 East: 3114232.84 (U.S. survey feet)

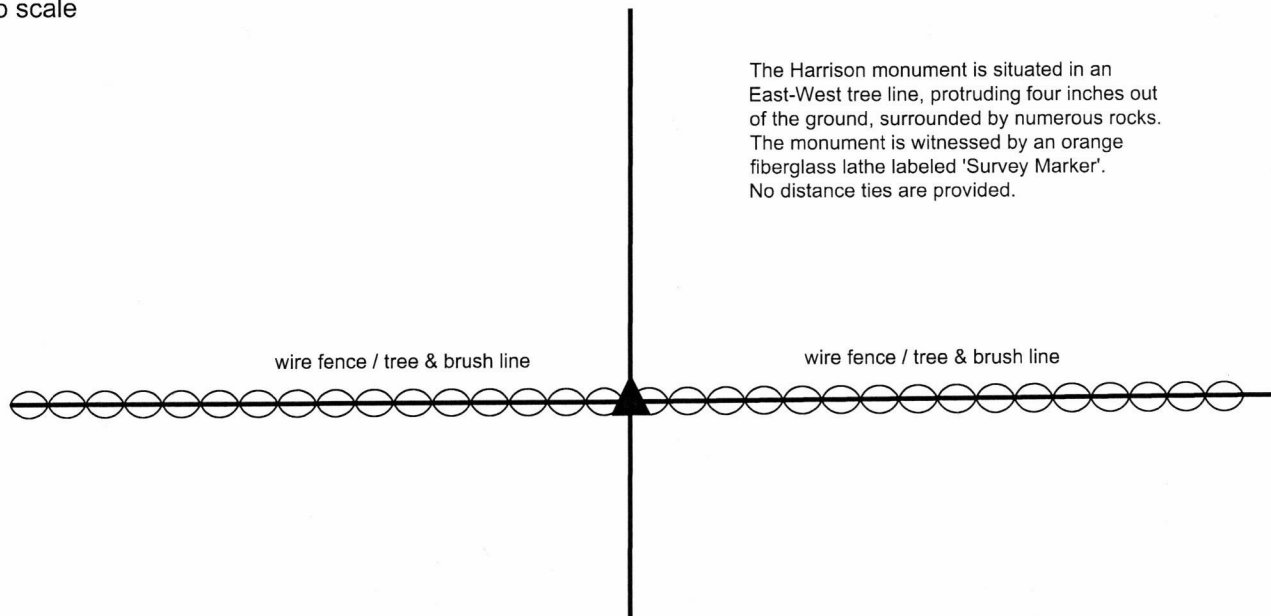
Type of monument: Harrison, 4" disk 'Section Corner'
Depth: Four inches above adjacent ground

Indiana tie card references:
IN02_T20NR1W27_80 IN02_T20NR1W26_72
IN02_T20NR1W34_08 IN02_T20NR1W35_00

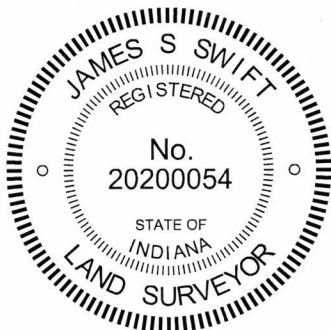


CORNER WITNESS DETAIL


No scale



The Harrison monument was set over the base of a wood corner post. A BCS record of October 21, 1871 states, with respect to this corner, "Corner of section 26, 27, 34 & 35 reestablished from trees, boxed Ash, and found mark. Hickory out. Set rock 18x15x10 +." No recent BCS tie cards were found referencing this corner. Excavation was performed at this corner on November 1, 2017. Prior to excavation an ancient wood post was found with fencing to the east and west. The post is the most substantial post found in the east-west fence line in this vicinity and clearly appears to represent a corner post. The post is known to have been held as marking the corner for previous surveys in the area and the position of the post works well with the relative positions of proximate corners, particularly with the strong evidence of the corners 1/2 and 1/4 mile north, respectively. (See documentation for corner NW 750-200.) Many rocks were found around and in the immediate vicinity of the post, including an extremely large piece of granite immediately west of the post. Excavation of the various rocks and inspection of the dimensions thereof did not reveal the stone described in the 1871 record. The huge piece of granite to the west of the post was not displaced, though excavation and probing under it did not yield the discovery of further rocks. The post, being an ancient cedar headpost 8 inches by 8 inches, was accepted as the best available evidence of the corner and was held as marking the corner. The top of the post was broken off from the subterranean base of the post at approximately 4 inches below ground level. The Harrison monument was set directly over the base of the post, anchored in part to the aforementioned adjacent large piece of granite and also anchored to the top 10 inches of the remaining portion of the base of the post. This corner was originally established as a wood post in 1829.




Kenneth E. Hedge, County Surveyor


James S. Swift, IN LS 20200054
December 13, 2017

Washington Township

Section 27 T20N, R1W	Section 26 T20N, R1W
Section 34 T20N, R1W	Section 35 T20N, R1W

SECTION CORNER RECORD

NW 700-200

BOONE COUNTY SURVEYOR'S OFFICE

State Plane grid coordinates NAD83 (2011):

North: 1782550.76 East: 3114232.84 (U.S. survey feet)

Type of monument: 5/8" diameter rebar with aluminum cap stamped 'Boone County Surveyor'

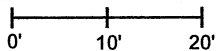
Depth: Three inches below adjacent ground

Indiana tie card references:

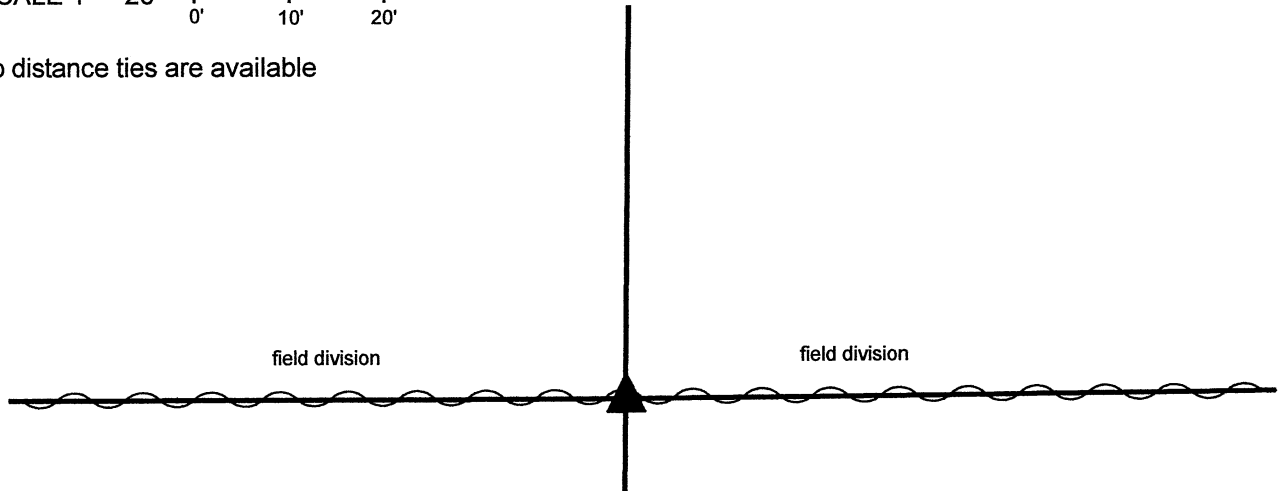
IN02_T20NR1W27_80 IN02_T20NR1W26_72

IN02_T20NR1W34_08 IN02_T20NR1W35_00

CORNER WITNESS DETAIL

SCALE 1" = 20' 

No distance ties are available



This corner was monumented in 2017. In the fall of 2020, the standing east-west fence was removed by the adjoining land owners and the Harrison monument which had been set over the base of a wood corner was destroyed when the adjacent rocks were removed but the base of the wood post was left largely intact. On March 25, 2021, a rebar was driven into the remnants of the base of the post at the same position previously marked by the Harrison monument.

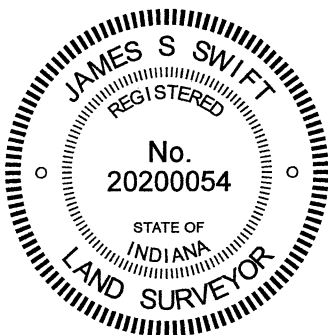
The report of findings and monumentation from 2017 is as follows:

The Harrison monument was set over the base of a wood corner post.

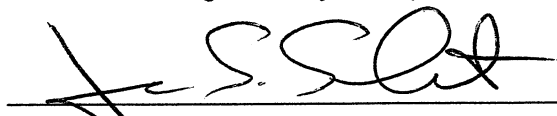
A BCS record of October 21, 1871 states, with respect to this corner, "Corner of section 26, 27, 34 & 35 reestablished from trees, boxed Ash, and found mark. Hickory out. Set rock 18x15x10 +." No recent BCS tie cards were found referencing this corner.

Excavation was performed at this corner on November 1, 2017. Prior to excavation an ancient wood post was found with fencing to the east and west. The post is the most substantial post found in the east-west fence line in this vicinity and clearly appears to represent a corner post. The post is known to have been held as marking the corner for previous surveys in the area and the position of the post works well with the relative positions of proximate corners, particularly with the strong evidence of the corners 1/2 and 1/4 mile north, respectively. (See documentation for corner NW 750-200.) Many rocks were found around and in the immediate vicinity of the post, including an extremely large piece of granite immediately west of the post. Excavation of the various rocks and inspection of the dimensions thereof did not reveal the stone described in the 1871 record. The huge piece of granite to the west of the post was not displaced, though excavation and probing under it did not yield the discovery of further rocks. The post, being an ancient cedar headpost 8 inches by 8 inches, was accepted as the best available evidence of the corner and was held as marking the corner. The top of the post was broken off from the subterranean base of the post at approximately 4 inches below ground level. The Harrison monument was set directly over the base of the post, anchored in part to the aforementioned adjacent large piece of granite and also anchored to the top 10 inches of the remaining portion of the base of the post.

This corner was originally established as a wood post in 1829.




Kenneth E. Hedge, County Surveyor


James S. Swift, IN LS 20200054

December 13, 2017 - revised June 1, 2021

Washington Township

Section 27 T20N, R1W	Section 26 T20N, R1W
Section 34 T20N, R1W	Section 35 T20N, R1W

SECTION CORNER RECORD

NW 700-250

BOONE COUNTY SURVEYOR'S OFFICE

State Plane grid coordinates NAD83 (CORS96):

North: 1782547.98 East: 3111597.04 (U.S. survey feet)

Type of monument: Harrison, 4" disk 'Section Corner'

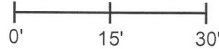
Depth: One inch below adjacent road surface

Indiana tie card references:

IN02_T20NR1W27_76 IN02_T20NR1W34_04

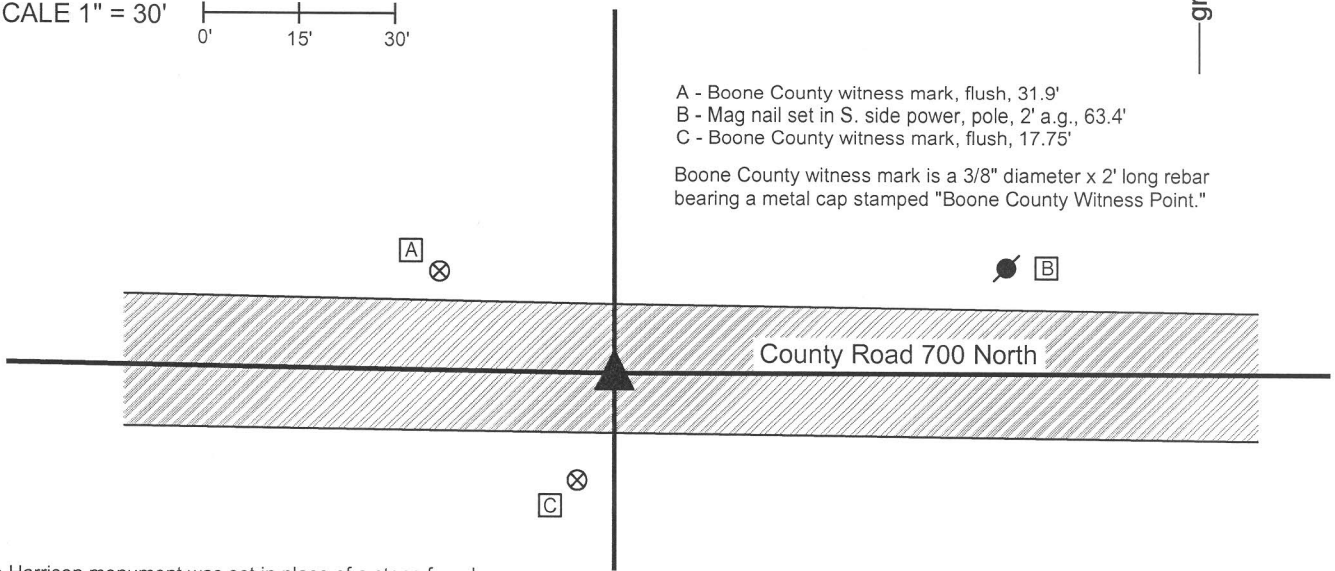
CORNER WITNESS DETAIL

SCALE 1" = 30'



- A - Boone County witness mark, flush, 31.9'
- B - Mag nail set in S. side power, pole, 2' a.g., 63.4'
- C - Boone County witness mark, flush, 17.75'

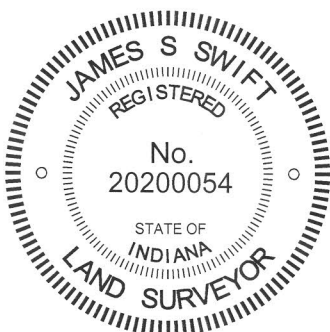
Boone County witness mark is a 3/8" diameter x 2' long rebar bearing a metal cap stamped "Boone County Witness Point."



The Harrison monument was set in place of a stone found.

A BCS record dated March 23, 1874 states, with respect to this corner, "Reestablished from stump of Poplar and after finding a stake I drove when surveying the road when I had both trees, Set Two Rocks. Under one 12x7x6 +. Top one 12x11x6 +." No recent BCS tie cards were found referencing this corner.

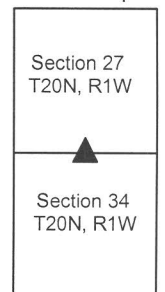
Excavation was performed at this corner on July 3, 2014. Prior to excavation a Mag nail was found at the surface of the road in line with occupation lines to the north and south. Excavation revealed a vertical section of railroad rail found at 6 inches deep, north and west of the nail. Further excavation revealed a stone found at 12 inches deep, slightly south and east of both the nail and rail. As found, the stone appeared to be leaning to the east, presumably having been displaced from its vertical position by road grading equipment. The stone was stood up in a vertical orientation and an etched "+" mark was clearly visible on the top of the stone. As stood up the stone measured 13 inches tall by 11 inches N-S by 6 inches E-W. This stone was accepted as being the top stone described in the 1874 record. The stone was removed and the lower stone was searched for but not found. Further excavation of an area being approximately 30 inches wide, centered in the N-S dimension on the found stone and extending 2 feet east and 3 feet west of the stone yielded no further evidence of the corner. No explanation is offered for the fact that the record lower stone was not found. It is possible that the upper stone had been displaced from its original position when it was knocked, hence moved from over the lower stone. However, this is not considered likely, given that the upper stone was well embedded in the clay layer below the road and appeared merely to be leaning, not displaced. If it was displaced, it seems even less likely that it would have been moved more than 2 feet and yet remained partially vertical. The position of the stone of the corner, as stood vertical where it was originally found, was held as marking the corner. A Harrison monument was set in this position. The Mag nail and railroad rail were both removed during excavation. The source of these monuments is not known. The Mag nail had been 0.4 foot north and 0.3 foot west of the corner. The rail had been 1 foot north and 1 foot west of the corner. This corner was originally established as a wood post in 1829.



Kenneth E. Hedge
 Kenneth E. Hedge, County Surveyor

James S. Swift
 James S. Swift, IN LS 20200054
 March 27, 2015

Washington Township



PHOTOGRAPHIC DOCUMENTATION

Date of photography: July 3, 2014

The stone as originally found, leaning towards the east (which is to the left on this picture.)



The excavation area with #53 stone in the bottom of the trench, approximately 30" wide by 5' long excavated in search of the record lower stone.



The stone stood up, showing the etched "+" mark on top.



View from the west, looking across the stone and east along County Road 700 North.



The same picture as above with the mark visually enhanced for ease of visual detection.



For details and documentation, refer to related sheet "Section Corner Record."

SECTION CORNER RECORD

BOONE COUNTY SURVEYOR'S OFFICE

NW 700-300

State Plane grid coordinates NAD83 (2011):
 North: 1772068.94 East: 3087819.95 (U.S. survey feet)

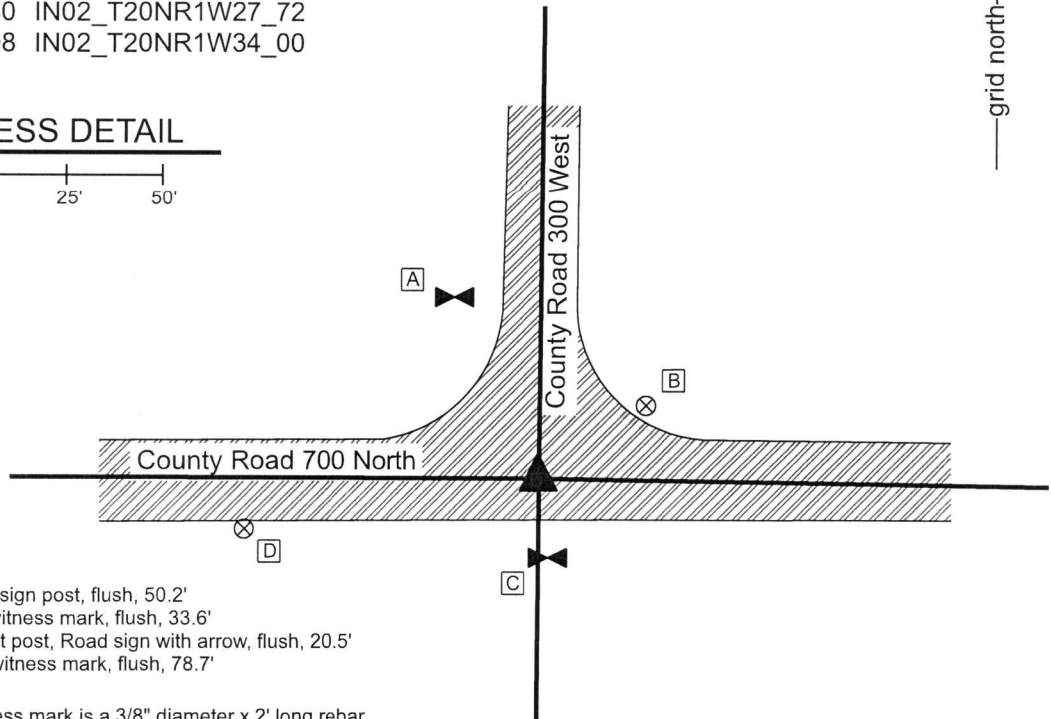
Type of monument: 4 inch Mag spike set over
 Brass Plug in monument box, INDOT Type B
 Depth: Mag spike - flush, plug - 5 inches deep

Indiana tie card references:
 IN02_T20NR1W28_80 IN02_T20NR1W27_72
 IN02_T20NR1W33_08 IN02_T20NR1W34_00



CORNER WITNESS DETAIL

SCALE 1" = 50'

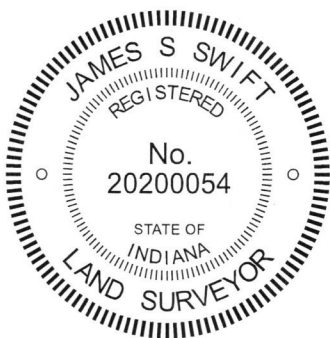


- A - East edge, stop sign post, flush, 50.2'
- B - Boone County witness mark, flush, 33.6'
- C - West edge, west post, Road sign with arrow, flush, 20.5'
- D - Boone County witness mark, flush, 78.7'

Boone County witness mark is a 3/8" diameter x 2' long rebar bearing a metal cap stamped "Boone County Witness Point."

The brass plug within the monument box was found in place, buried under 5 inches of asphalt. The Mag Spike was set directly over the plug. A BCS record dated September 25, 1871 states, with respect to this corner, "Reestablished from knowledge obtained when surveying road, when stump of one tree was here. Found two stakes I drove at that time, One 15 ft. N, the other 15 ft. S. of Corner. Set rock 28x16x10." No recent BCS tie cards were found referencing this corner.

No excavation was performed at this corner beyond exposing the monument box from below the 5 inch covering of asphalt due to the fact that the corner falls in an area of substantial fill associated with the approach to the overpass of County Road 700 North over Interstate 65. The corner is shown on the plans for I-65, reference R-08208-29, fiscal year 1969, plan I-65-5(36) 140. The plans show the corner at the intersection of 'Sec. Lines' and is labeled as "approx. 1/4 Sect. Cor. TYPE B MONUMENT REQ'D." It is believed that the monument has been held as the corner by surveyors since being established in association with the construction of Interstate 65. Due to the substantial fill placed during the construction of the overpass, it is not practical to excavate for further evidence and the INDOT Type B monument was held as marking the corner. The position of the monument works well with the relative positions of proximate corner and works well with the local evidence of the corner in the form of the roadways to the east and north. On July 17, 2018, the top of the monument box was exposed, the lid of the box was removed and the brass plug located. Asphalt patching was placed over the box, with no lid, and plug to flush with the surface of the road. On August 3, 2018, a 4 inch long Mag Spike was set directly over the brass plug. This corner was originally established as a wood post in 1822.



Kenneth E. Hedge
 Kenneth E. Hedge, County Surveyor

James S. Swift
 James S. Swift, IN LS 20200054
 August 7, 2018

Washington Township

Section 28 T20N, R1W	Section 27 T20N, R1W
Section 33 T20N, R1W	Section 34 T20N, R1W

SECTION CORNER RECORD

NW 750-200

BOONE COUNTY SURVEYOR'S OFFICE

State Plane grid coordinates NAD83 (2011):

North: 1785169.53 East: 3114242.98 (U.S. survey feet)

Type of monument: + mark on top of stone

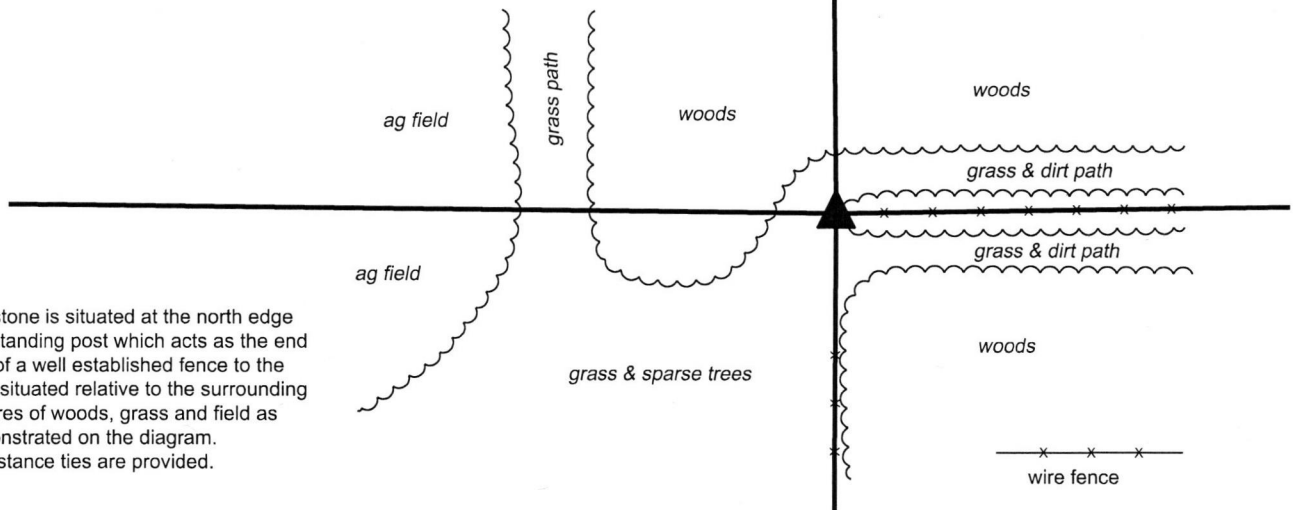
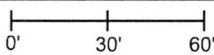
Depth: flush

Indiana tie card references:

IN02_T20NR1W26_36 IN02_T20NR1W27_44

CORNER WITNESS DETAIL

SCALE 1" = 60'



The stone is situated at the north edge of a standing post which acts as the end post of a well established fence to the east, situated relative to the surrounding features of woods, grass and field as demonstrated on the diagram. No distance ties are provided.


The stone was found in place.

A BCS record of October 21, 1871 states, with respect to this corner, "Reest'd both trees (green). Set Rock 16x13x13 marked +." No recent BCS tie cards were found referencing this corner.

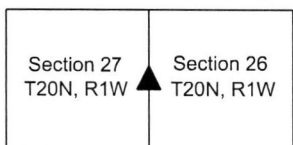
The stone was exposed on December 1, 2017. It is situated at the north edge of a wood post with fencing to the east and in line with fencing to the south which begins approximately 30 feet south of the corner. The top of the stone was found near the surface of the ground. Much of the stone was exposed and it was found to measure 13 inches N-S by 13 inches E-W by 16 inches tall. The height of the stone was measured on the west side. A clearly visible + mark was found on the top, center of the stone. The stone, as found, was generally vertical, though it appeared in the field that the stone may be leaning slightly SSE. The position of the stone works well with evidence of the section line to the south, including the relative positions of the corners 1/4 and 1/2 mile, respectively, to the south. The generally accepted position of the corner at the quarter mile to the south is marked by a nail in the center of an east-west roadway and in line with fencing to the north. However, it is noted that the stone is approximately 18 feet east and 37 feet south of a theoretical midpoint of a line connecting the section corners to the north and south. No explanation is offered for this fact. Given that the 1871 record indicates that the position of the corner was established from the original bearing trees and given the harmony of the position of the stone with the evidence to the south, minimal uncertainty is associated with acceptance of the stone as marking the corner. The stone was left in place. The + mark etched into the center of the top of the stone is clearly visible, with each arm of the + being approximately 2 inches long. The mark is held as the specific position of the corner. This corner was originally established as a wood post in 1829.




Kenneth E. Hedge, County Surveyor


James S. Swift, IN-LS 20200054
December 13, 2017

Washington Township



SECTION CORNER RECORD

NW 750-300

BOONE COUNTY SURVEYOR'S OFFICE

State Plane grid coordinates NAD83 (CORS96):

North: 1785231.74 East: 3108975.58 (U.S. survey feet)

Type of monument: Harrison, 4" disk 'Section Corner'

Depth: six inches below adjacent gravel road surface

Indiana tie card references:

IN02_T20NR1W28_44 IN02_T20NR1W27_36

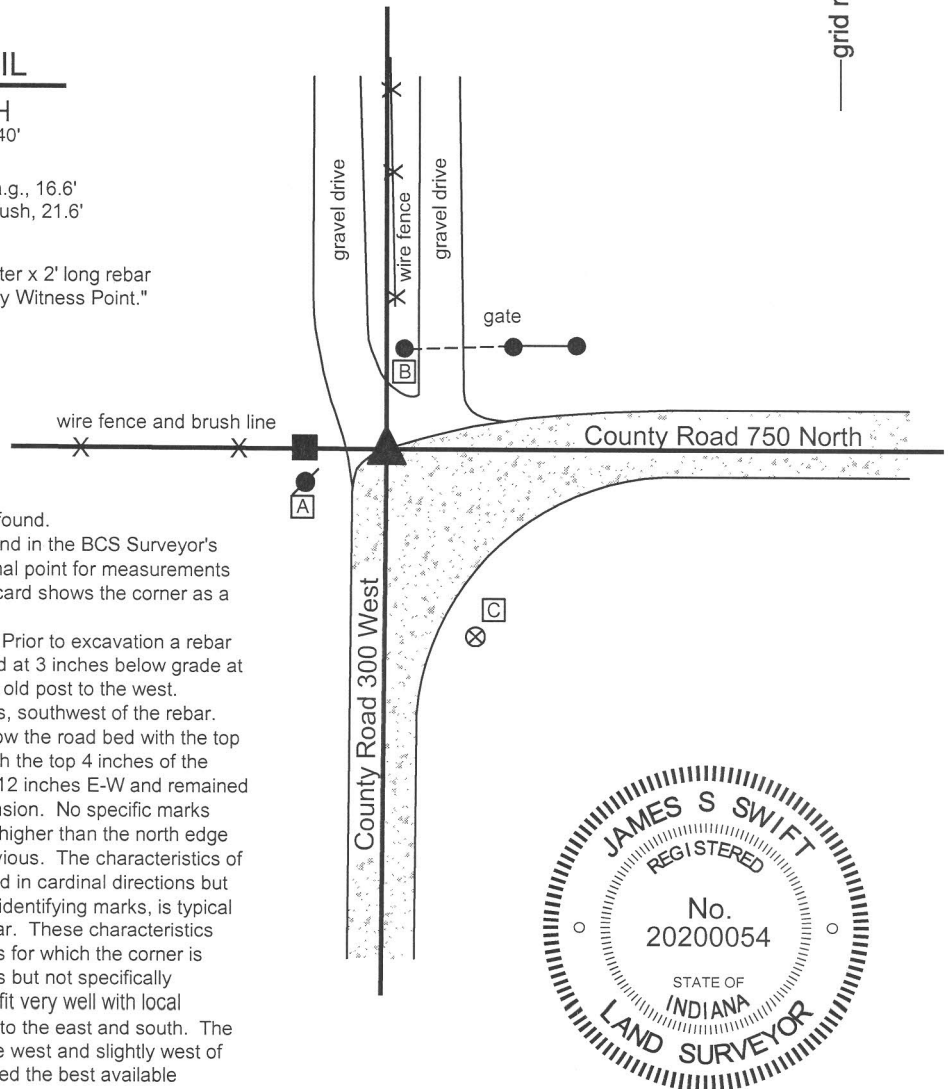


CORNER WITNESS DETAIL

SCALE 1" = 40'

- A - Mag nail set in E. side of power pole, 2' a.g., 16.6'
- B - South edge galvanized steel gate post, flush, 21.6'
- C - Boone County witness point, flush, 43.2'

Boone County witness mark is a 3/8" diameter x 2' long rebar bearing a metal cap stamped "Boone County Witness Point."



The Harrison monument was set over a stone found.

No specific descriptions of this corner were found in the BCS Surveyor's Record. The corner is mentioned as the terminal point for measurements in records of 1839 and 1871. A 1996 BCS tie card shows the corner as a rebar with no documentation of source.

This corner was excavated on June 26, 2014. Prior to excavation a rebar with a plastic cap (markings illegible) was found at 3 inches below grade at the 90 degree bend in the road and east of the old post to the west.

Excavation revealed a stone found at 16 inches, southwest of the rebar. The stone was embedded in the clay layer below the road bed with the top of the stone at the bottom of the road bed. With the top 4 inches of the stone exposed, it measured 14 inches N-S by 12 inches E-W and remained stable, clearly much larger in the vertical dimension. No specific marks were found. The south edge of the stone was higher than the north edge though a clearly defined high point was not obvious. The characteristics of this stone, being embedded in the clay, oriented in cardinal directions but neither being specifically vertically nor bearing identifying marks, is typical of stones found for which the records are similar. These characteristics have been observed for numerous other stones for which the corner is identified as the terminal point for measurements but not specifically described by the County Surveyor. The stone fit very well with local evidence in the form of the centers of the road to the east and south. The stone was generally in line with the fence to the west and slightly west of the fence to the north. The stone was accepted the best available evidence of the corner. The highest point of the stone, near the south edge of the stone, was held as marking the corner and a Harrison monument was set over this point. The rebar, removed during construction, had been 1 foot east and 1 foot north.

This corner was originally established as a wood post in 1829.

Kenneth E. Hedge, County Surveyor

James S. Swift, IN LS 20200054

March 27, 2015

Washington Township

Section 28 T20N, R1W	Section 27 T20N, R1W
-------------------------	-------------------------

PHOTOGRAPHIC DOCUMENTATION

Date of photography: June 26, 2014

The stone as originally found.



The stone more fully exposed.



View from the north, looking across the stone and south along County Road 300 West.



The stone and the fence/brush line to the west. The end post of the fence is to the right of the sign.



For details and documentation, refer to related sheet "Section Corner Record."

SECTION CORNER RECORD

NW 800-200

BOONE COUNTY SURVEYOR'S OFFICE

State Plane grid coordinates NAD83 (CORS96):

North: 1787863.62 East: 3114216.80 (U.S. survey feet)

Type of monument: Harrison, 4" disk 'Section Corner'

Depth: One inch below adjacent road surface

Indiana tie card references:

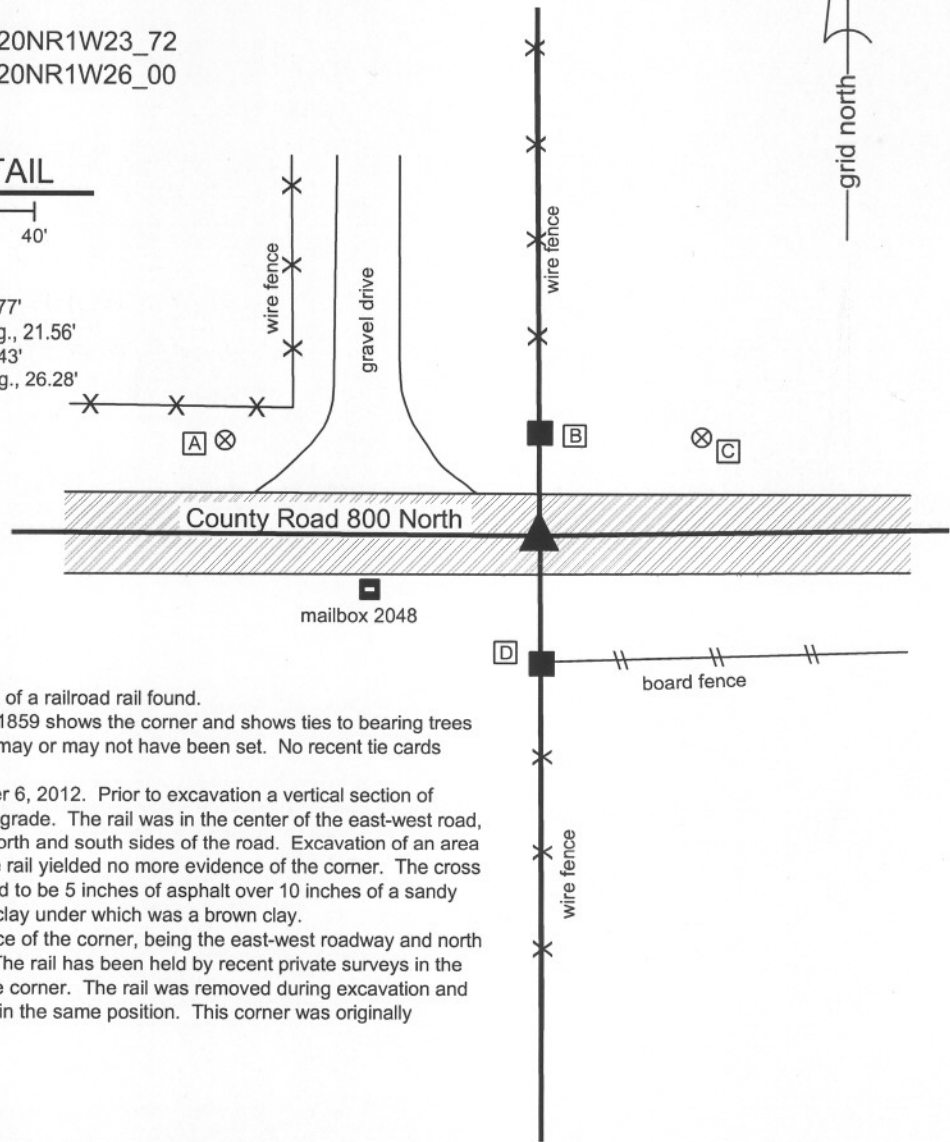
IN02_T20NR1W22_80 IN02_T20NR1W23_72

IN02_T20NR1W27_08 IN02_T20NR1W26_00

CORNER WITNESS DETAIL

SCALE 1" = 40'
0' 20' 40'

- A - Boone County witness mark, flush, 68.77'
- B - Mag nail set in E. side wood post, 1' a.g., 21.56'
- C - Boone County witness mark, flush, 39.43'
- D - Mag nail set in N. side wood post, 1' a.g., 26.28'



The harrison monument was set in place of a railroad rail found.

A record of A BCS record of August 25, 1859 shows the corner and shows ties to bearing trees but does not state what monumentation may or may not have been set. No recent tie cards have been found referencing this corner.

This corner was excavated on September 6, 2012. Prior to excavation a vertical section of railroad rail was found at 4 inches below grade. The rail was in the center of the east-west road, opposite the wood corner posts on the north and south sides of the road. Excavation of an area 5 feet N-S by 5 feet E-W centered on the rail yielded no more evidence of the corner. The cross section of the road at this point was found to be 5 inches of asphalt over 10 inches of a sandy gravel material over 10 inches of a blue clay under which was a brown clay.

The railroad rail fits with the local evidence of the corner, being the east-west roadway and north south fences on each side of the road. The rail has been held by recent private surveys in the vicinity. The rail was held as marking the corner. The rail was removed during excavation and was replaced with a harrison monument in the same position. This corner was originally established as a wood post in 1829.



Kenneth E. Hedge

 Kenneth E. Hedge, County Surveyor

James S. Swift

 James S. Swift, IN LS 20200054
 November 5, 2012

Washington Township

Section 22 T20N, R1W	Section 23 T20N, R1W
Section 27 T20N, R1W	Section 26 T20N, R1W