

SECTION CORNER RECORD

BOONE COUNTY SURVEYOR'S OFFICE

NW 100-800

State Plane grid coordinates NAD83 (2011):

North: 1750841.63 East: 3082517.70 (U.S. survey feet)

Type of monument: plug in monument box, INDOT Type B

Depth: Flush with adjacent road surface

Indiana tie card references:

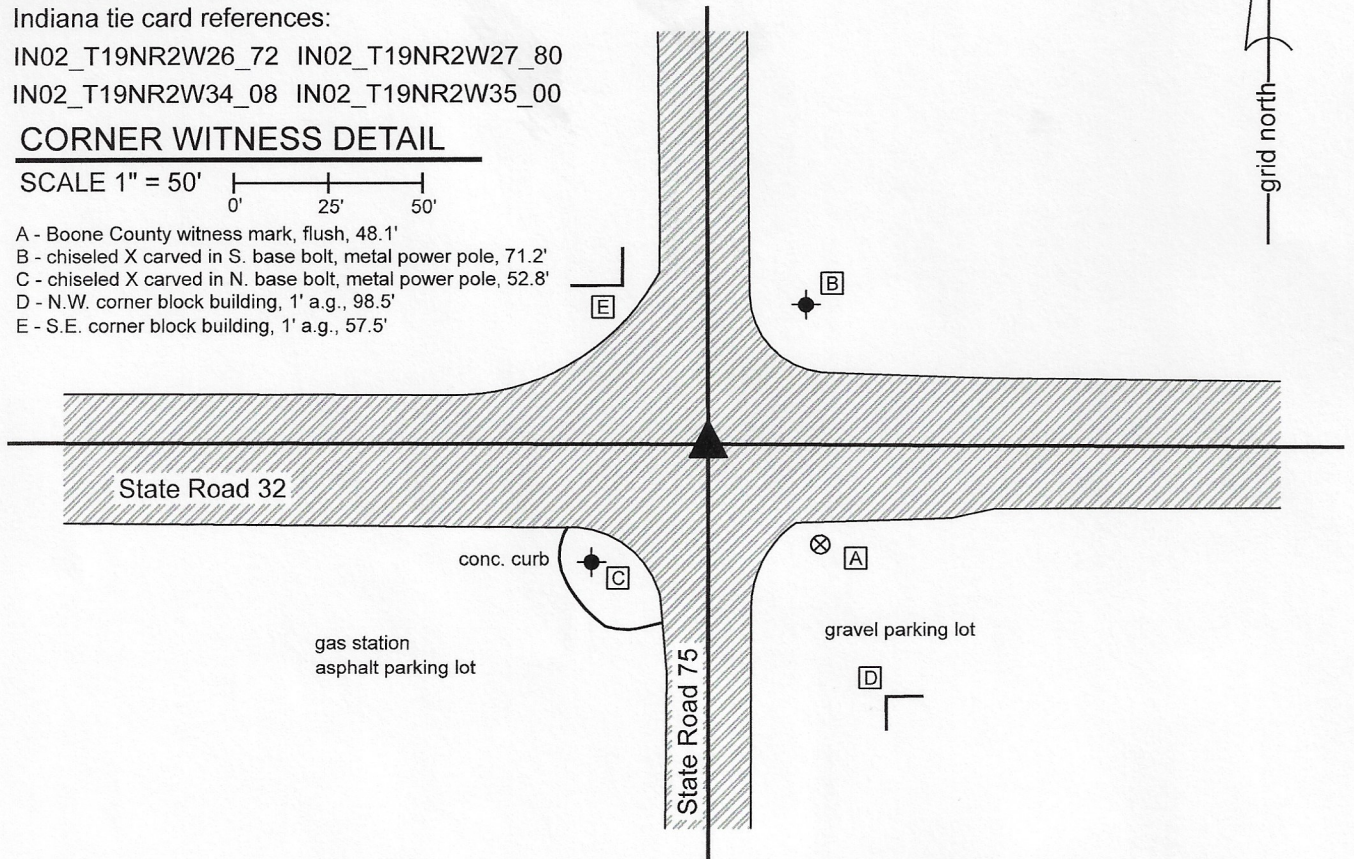
IN02_T19NR2W26_72 IN02_T19NR2W27_80

IN02_T19NR2W34_08 IN02_T19NR2W35_00

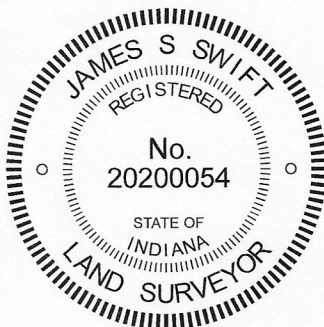
CORNER WITNESS DETAIL

SCALE 1" = 50'

- A - Boone County witness mark, flush, 48.1'
- B - chiseled X carved in S. base bolt, metal power pole, 71.2'
- C - chiseled X carved in N. base bolt, metal power pole, 52.8'
- D - N.W. corner block building, 1' a.g., 98.5'
- E - S.E. corner block building, 1' a.g., 57.5'



The Type B monument was found in place and held as marking the corner. A BCS record of September 12, 1912 states, with respect to this corner, "Stone in crossing long recognized as corner." A BCS tie card dated June 30, 1982 shows the corner as a bolt in the center of the intersection of the two state roads. A BCS tie card dated August 4, 1995 shows the corner with ties but does not reference a specific monument. A tie card which is believed to have been supplied by INDOT, dated November 10, 1998, shows the corner as an Iron Rod in Pod. BCS tie cards of July 30, 1996 and December, 2003 show the corner as a Type C monument. A Survey Monument Replacement Surveyor's Report recorded as Instrument 200700005107 in the Office of the Boone County Recorder states that a new Type B monument was set following resurfacing operations, between May 2006 and May, 2007. The report indicates that the new monument was set 0.07 foot northeast of the previous monument. The ties that remain from the various tie cards, including ties to the corners of the two block buildings shown on this drawing, match the distances measured in the field within 0.1 foot. The Type B monument is held as the corner in the current position, with uncertainties of approximately 0.1 foot in all directions. This corner was originally established as a wood post in 1822.



Kenneth E. Hedge
 Kenneth E. Hedge, County Surveyor

James S. Swift
 James S. Swift, IN LS 20200054
 May 11, 2020

Jefferson Township

Section 27 T19N, R2W	Section 26 T19N, R2W
Section 34 T19N, R2W	Section 35 T19N, R2W

SECTION CORNER RECORD

BOONE COUNTY SURVEYOR'S OFFICE

NW 100-850

State Plane grid coordinates NAD83 (2011):

North: 1750846.99 East: 3079870.15 (U.S. survey feet)

Type of monument: Mag nail with 'Boone County Surveyor' washer

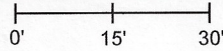
Depth: Flush with adjacent road surface

Indiana tie card references:

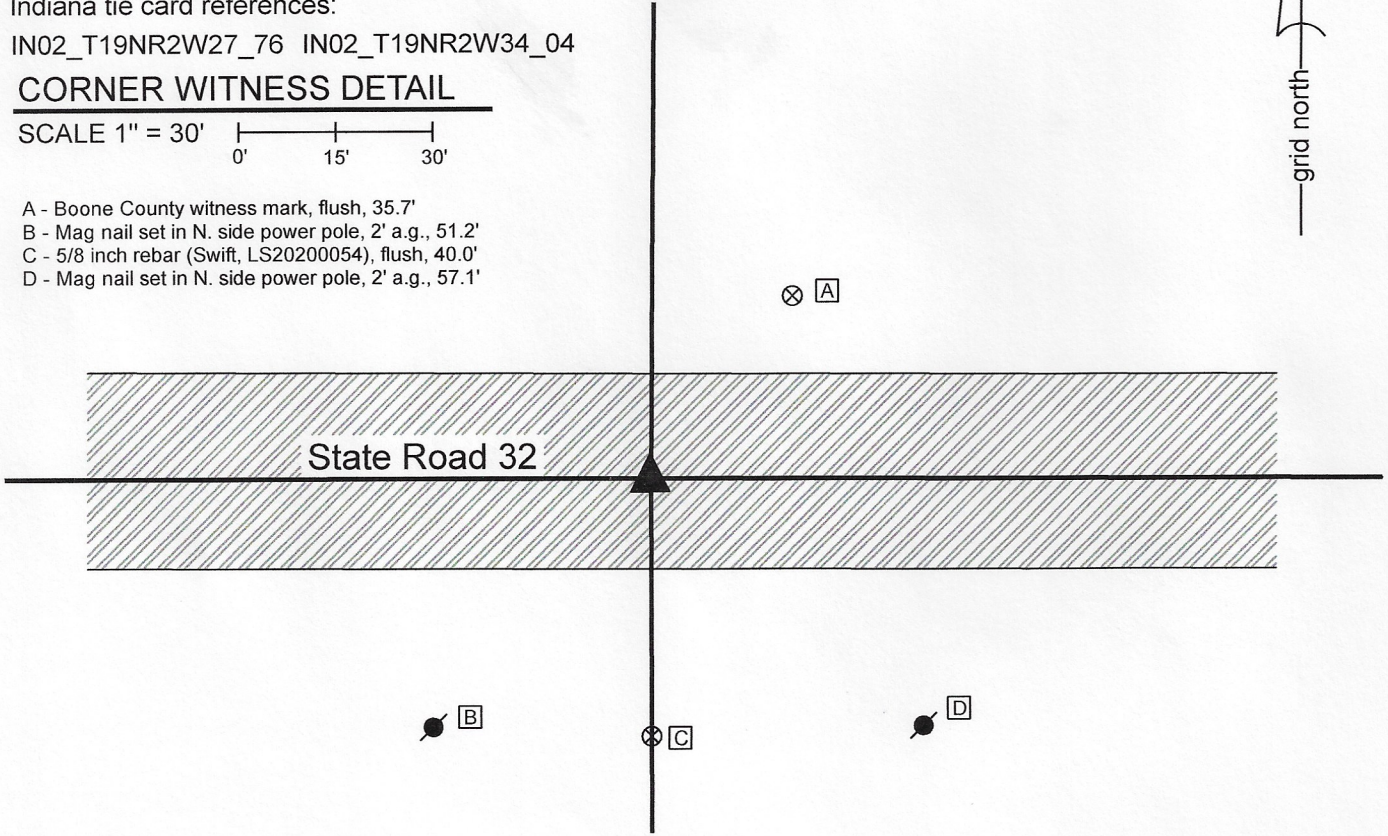
IN02_T19NR2W27_76 IN02_T19NR2W34_04

CORNER WITNESS DETAIL

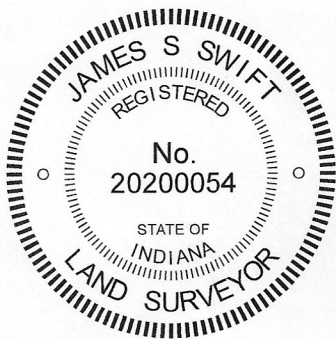
SCALE 1" = 30'



- A - Boone County witness mark, flush, 35.7'
- B - Mag nail set in N. side power pole, 2' a.g., 51.2'
- C - 5/8 inch rebar (Swift, LS20200054), flush, 40.0'
- D - Mag nail set in N. side power pole, 2' a.g., 57.1'



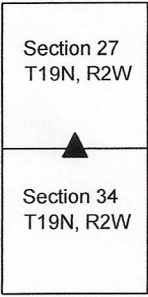
The mag nail was set at a computed position.
 No specific descriptions of this corner were found in the Boone County Surveyor's Record beyond the original establishment of the corner as a wood post in 1822. No recent BCS tie cards were found referencing this corner.
 The corner is shown as a railroad spike on surveys by Jerry L. Carter, LS S0350, on surveys recorded as Instruments 0209856 and 0217196 in the Office of the Boone County Surveyor. The position of the railroad spike was computed with respect to the relative positions of other monuments shown on said surveys and found marking corners in State Road 75. Uncertainties with respect to this computed position are approximately 0.5 foot in all directions. The position established per the surveys falls in the approximate center of State Road 32, immediately north of a wood end post. It is noted that the corner falls slightly east of the end post as it is currently placed but the post appears to have been moved recently, with most of the portion of the base which was clearly previously underground being well above ground. No railroad spike or other monument was found marking the corner. The position computed with respect to the Carter surveys was held and a Mag nail with washer stamped 'Boone County Surveyor' was set at this position on June 17, 2020.



Kenneth E. Hedge
 Kenneth E. Hedge, County Surveyor

James S. Swift
 James S. Swift, IN LS 20200054
 August 5, 2020

Jefferson Township



SECTION CORNER RECORD

NW 150-800

BOONE COUNTY SURVEYOR'S OFFICE

State Plane grid coordinates NAD83 (2011):

North: 1753517.60 East: 3082504.46 (U.S. survey feet)

Type of monument: Iron plug in concrete

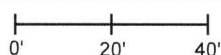
Depth: Flush with adjacent road surface

Indiana tie card references:

IN02_T19NR2W27_44 IN02_T19NR2W26_36

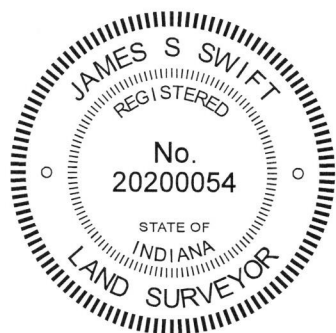
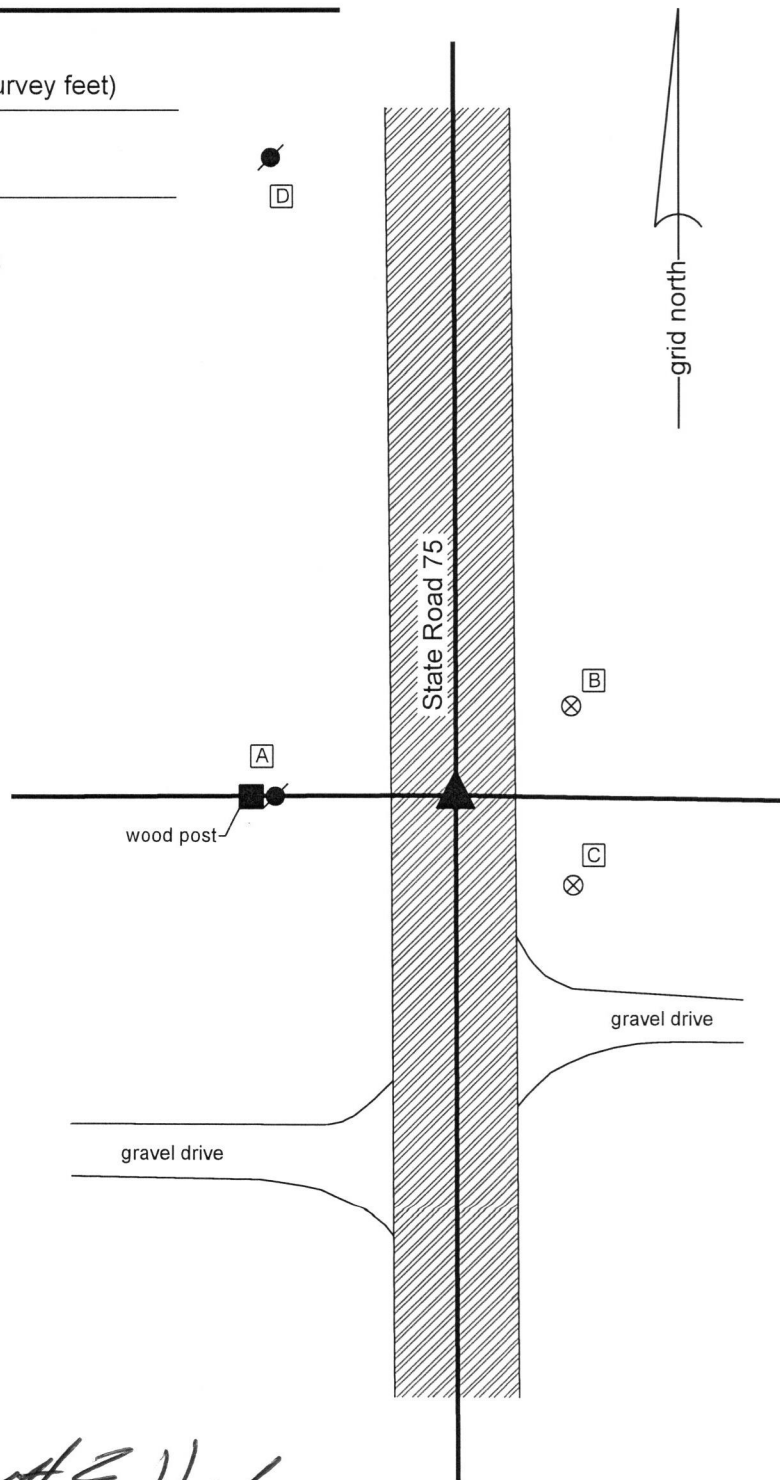
CORNER WITNESS DETAIL

SCALE 1" = 40'



- A - Mag nail set in E. side power pole, 2' a.g., 37.0'
- B - Boone County witness mark, flush, 30.5'
- C - Boone County witness mark, flush, 30.8'
- D - Mag nail set in S.E. side power pole, 2' a.g., 136.1'

The iron monument in concrete was found in place and accepted as marking the corner. The original date of installation of this monument is not known and has not been confirmed by INDOT. A tie sheet in the Boone County Surveyor's Office with no date, but known to have been submitted to the office in 2001, shows the corner as "rebar / conc. monument." The monument found in the field is believed to be the same monument as shown on the tie card. The monument fits well with the local evidence of the corner in the form of the north-south roadway of State Road 75 and the wood end post on the west side of the road and fits well with the relative distances to proximate corners. The monument is believed to be widely accepted as marking the corner. No excavation was performed at this corner.



Kenneth E. Hedge
Kenneth E. Hedge, County Surveyor

James S. Swift
James S. Swift, IN LS 20200054
July 3, 2018

Jefferson Township

Section 27 T19N, R2W	Section 26 T19N, R2W
-------------------------	-------------------------

SECTION CORNER RECORD

NW 150-900

BOONE COUNTY SURVEYOR'S OFFICE

State Plane grid coordinates NAD83 (2011):

North: 1753495.61 East: 3077226.39 (U.S. survey feet)

Type of monument: Harrison, 4" disk 'Section Corner'

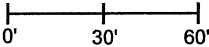
Depth: One inch below adjacent road surface

Indiana tie card references:

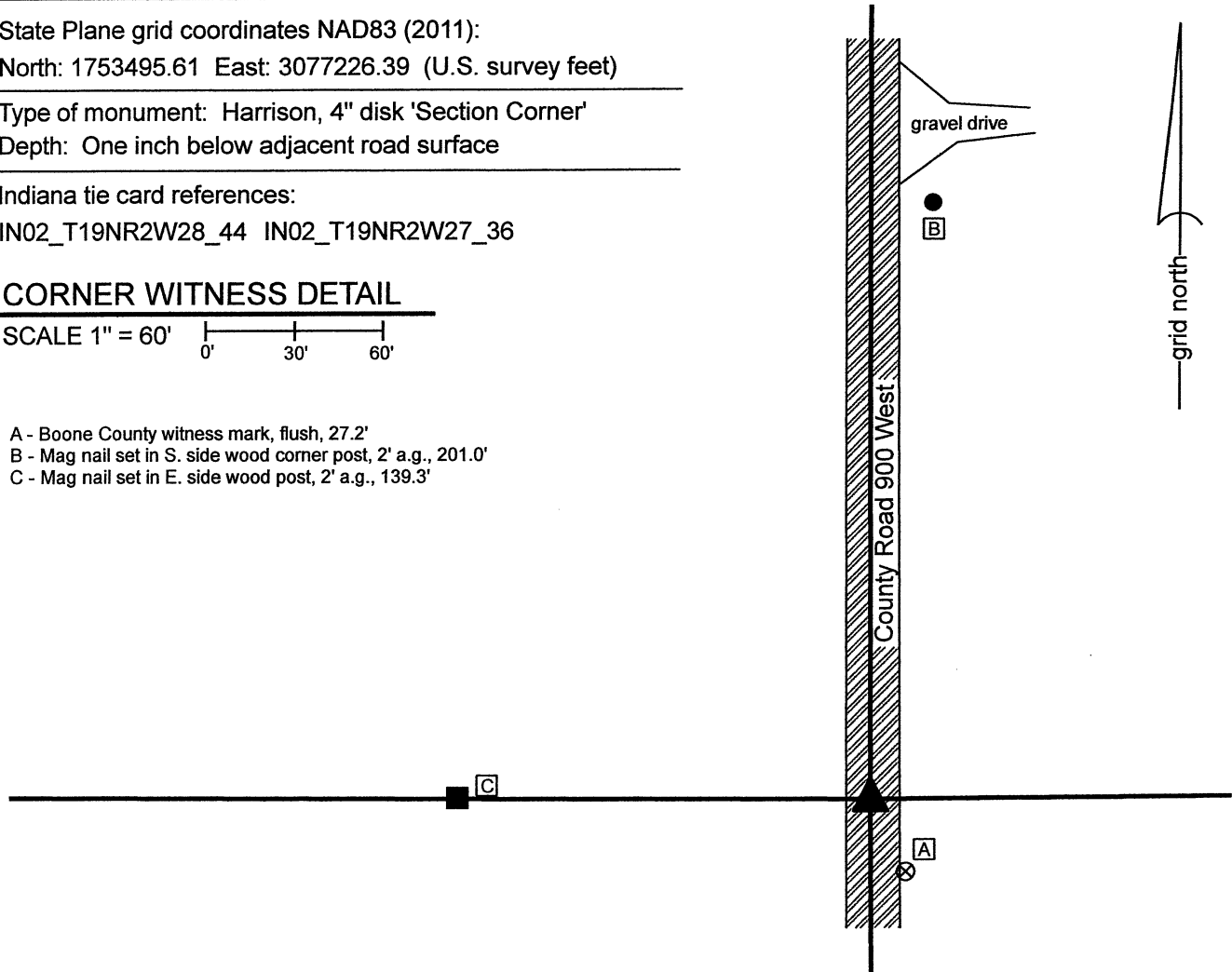
IN02_T19NR2W28_44 IN02_T19NR2W27_36

CORNER WITNESS DETAIL

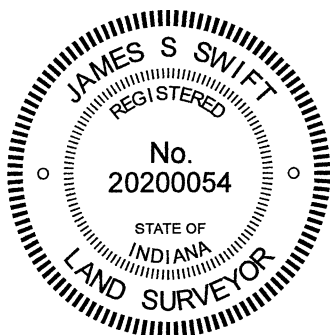
SCALE 1" = 60'



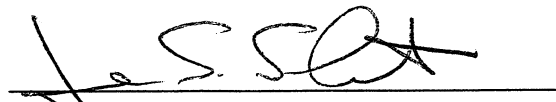
- A - Boone County witness mark, flush, 27.2'
- B - Mag nail set in S. side wood corner post, 2' a.g., 201.0'
- C - Mag nail set in E. side wood post, 2' a.g., 139.3'



The Harrison monument was set in place of a rebar and vertical section of railroad rail found. No specific descriptions of this corner were found in the BCS Surveyor's Record beyond the original establishment of the corner as a wood post in 1829. No recent BCS tie cards were found referencing the corner. Excavation was performed at this corner on September 24, 2021. Prior to excavation, a rebar with plastic cap stamped 'Section Corner' was found at 2 inches below grade in the approximate center of the north-south roadway, at the easterly prolongation of a fence and field division to the west. Excavation revealed a vertical section of railroad rail at 11 inches below grade. The rebar had been at the east edge of the rail but was situated such that the top of the rebar was directly above the top of the rail. Two small rocks were found at approximately 17 inches deep, approximately 2 feet northeast of the rebar and rail. The rocks were haphazard in their orientation and were entirely within the fill material of the road bed. These rocks could not be confirmed as being purposely set section corner monuments. No further evidence was found in an area of excavation being 5 feet N-S by 5 feet E-W, centered on the found rebar and rail. The bottom of the road bed was found at 22 inches deep. No documentation of source was found for the rebar and rail, but they fit well with the local evidence of the corner, being in the center of the north-south road and in line with evidence of occupation to the west. They also fit well with the relative positions of proximate corners. It is most likely that these monuments were set by personnel from this office, but that is not confirmed by available records. The rebar and rail were both removed during excavation and were replaced with a Harrison monument in the same horizontal position.




Kenneth E. Hedge, County Surveyor


James S. Swift, IN LS 20200054
September 29, 2021

Jefferson Township

Section 28 T19N, R2W	Section 27 T19N, R2W
-------------------------	-------------------------

SECTION CORNER RECORD

BOONE COUNTY SURVEYOR'S OFFICE

NW 200-800

State Plane grid coordinates NAD83 (2011):

North: 1756152.88 East: 3082491.88 (U.S. survey feet)

Type of monument: Iron plug in concrete

Depth: Flush with adjacent road surface

Indiana tie card references:

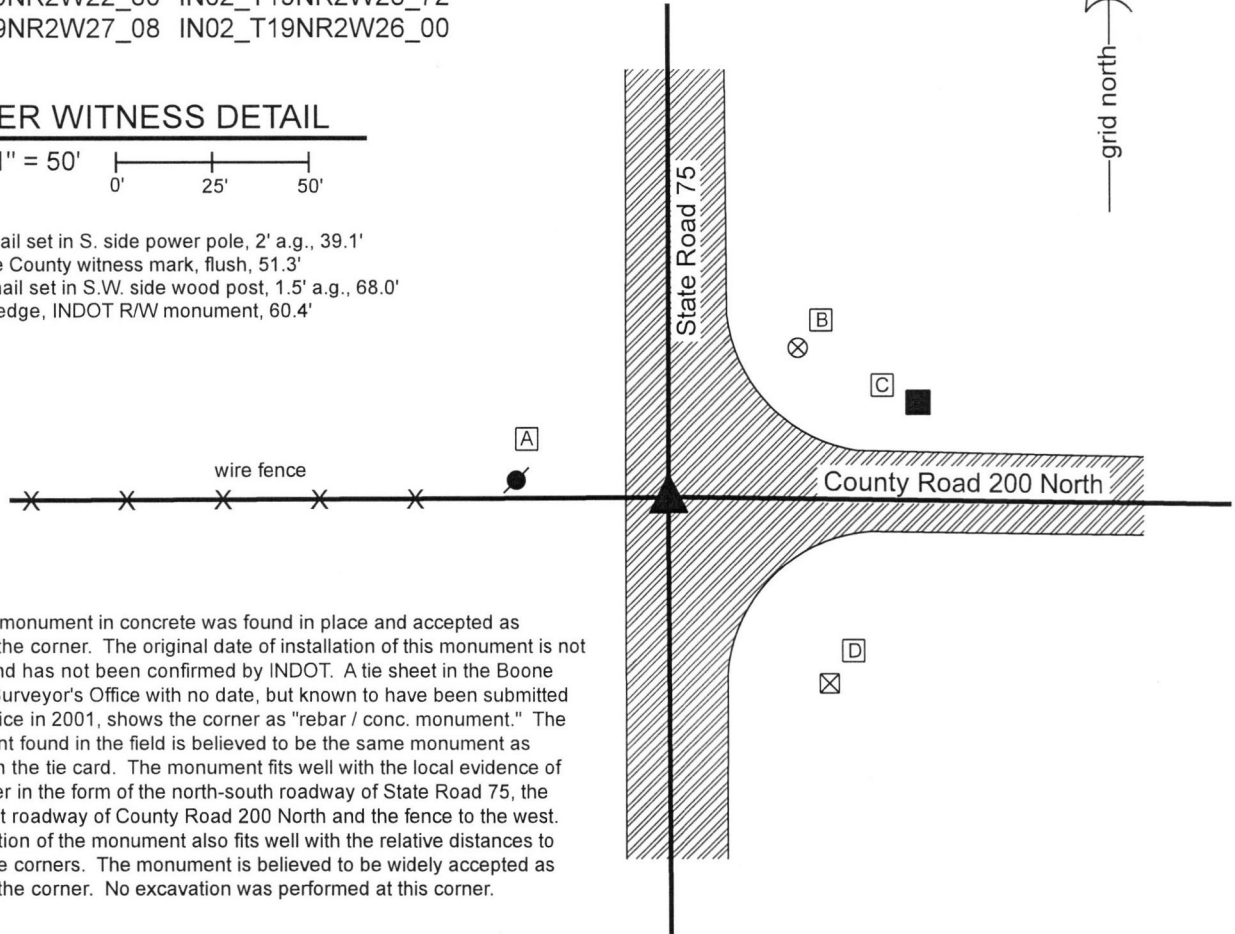
IN02_T19NR2W22_80 IN02_T19NR2W23_72

IN02_T19NR2W27_08 IN02_T19NR2W26_00

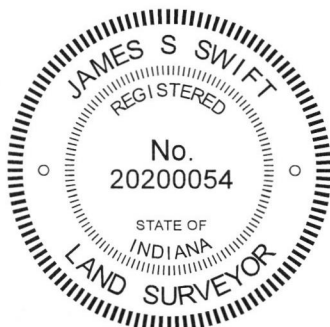
CORNER WITNESS DETAIL

SCALE 1" = 50'

- A - Mag nail set in S. side power pole, 2' a.g., 39.1'
- B - Boone County witness mark, flush, 51.3'
- C - Mag nail set in S.W. side wood post, 1.5' a.g., 68.0'
- D - N.W. edge, INDOT R/W monument, 60.4'



The iron monument in concrete was found in place and accepted as marking the corner. The original date of installation of this monument is not known and has not been confirmed by INDOT. A tie sheet in the Boone County Surveyor's Office with no date, but known to have been submitted to the office in 2001, shows the corner as "rebar / conc. monument." The monument found in the field is believed to be the same monument as shown on the tie card. The monument fits well with the local evidence of the corner in the form of the north-south roadway of State Road 75, the east-west roadway of County Road 200 North and the fence to the west. The position of the monument also fits well with the relative distances to proximate corners. The monument is believed to be widely accepted as marking the corner. No excavation was performed at this corner.



Kenneth E. Hedge
 Kenneth E. Hedge, County Surveyor

James S. Swift
 James S. Swift, IN LS 20200054
 July 3, 2018

Jefferson Township

Section 22 T19N, R2W	Section 23 T19N, R2W
Section 27 T19N, R2W	Section 26 T19N, R2W

SECTION CORNER RECORD

NW 200-850

BOONE COUNTY SURVEYOR'S OFFICE

State Plane grid coordinates NAD83 (2011):

North: 1756131.92 East: 3079869.21 (U.S. survey feet)

Type of monument: Harrison, 4" disk 'Section Corner'

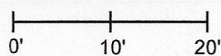
Depth: Two inches above adjacent ground

Indiana tie card references:

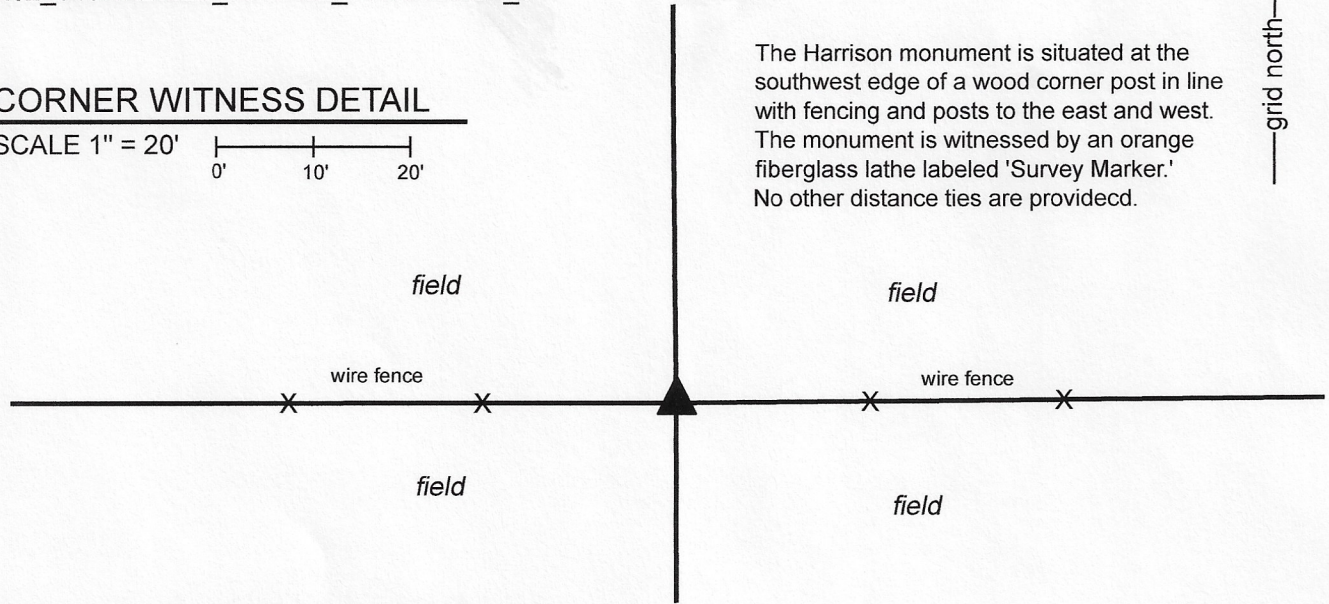
IN02_T19NR2W22_76 IN02_T19NR2W27_04

CORNER WITNESS DETAIL

SCALE 1" = 20'



The Harrison monument is situated at the southwest edge of a wood corner post in line with fencing and posts to the east and west. The monument is witnessed by an orange fiberglass lathe labeled 'Survey Marker.' No other distance ties are provided.



The Harrison monument was set in place of two stones found.

No specific descriptions of this corner were found in the BCS Surveyor's Record beyond the original establishment of the corner as a wood post in 1829. The corner is shown as the terminal point for measurements in an entry of 1917 which shows distances of 20.09 chains for the respective south lines of the east and west halves of the southwest quarter of section 22 and an entry of 1919 which shows identical distances for the respective north lines of the east and west halves of the northwest quarter of section 27. Neither recent BCS tie cards nor surveys found in the Office of the Boone County Recorder which reference the subject corner.

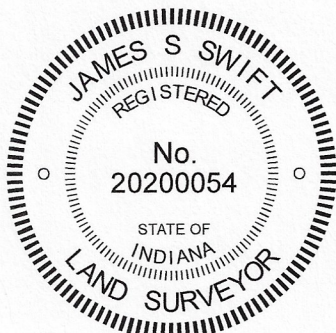
This corner was excavated on April 2 and 3, 2020. Prior to excavation, a wood post with fencing, partially standing, to the east and west as well as fencing cut to the north was found providing evidence of the corner. It was observed that position of the post is substantially south and east of the midpoint of a line connecting evidence of the section corners to the east and west. However, it was also observed that the post works remarkably well with the relative positions of substantial evidence of the corners approximately one-quarter and one-half mile west with respect to the aforementioned BCS entries of 1917 and 1919.

Excavation around the post revealed a large stone to the north of the post and two stones at the southwest edge of the post. The stone to the north does not appear to be a corner stone, being haphazardly oriented in the ground. The stones at the southwest edge of the post did appear to represent corner stones. The upper stone was 12 inches tall by 7 inches N-S by 9 inches E-W. The lower stone was 8 inches by 7 inches by 5 inches. Analysis of the evidence of ancient posts and fencing at several points along the quarter section lines to the east and west clearly indicated that the stones at the southwest edge of the post fit better with the evidence in the north-south dimension than did the corner post. This evidence indicated a position slightly south of the corner post. Even in the immediate vicinity of the corner, the fence evidence is more in line with the stones than the post. The stones were accepted as the best available evidence of the corner and are believed most likely to have been held as marking the corner for the 1917 and 1919 surveys. The stones were removed and replaced with a Harrison monument in the same position. It is noted that the corner post is no longer stable and that a 30 inch length of 5/8 inch rebar west set in the fencing slightly west of the corner to provide stability to the standing fence and post. This rebar does not represent evidence of the corner and is present near the corner exclusively for purposes of helping to hold up the standing fence.

Jefferson Township

Section 22
T19N, R2W

Section 27
T19N, R2W



Kenneth E. Hedge

 Kenneth E. Hedge, County Surveyor

James S. Swift

 James S. Swift, IN LS 20200054
 April 8, 2020

SECTION CORNER RECORD

NW 200-900

BOONE COUNTY SURVEYOR'S OFFICE

State Plane grid coordinates NAD83 (2011):

North: 1756130.40 East: 3077219.52 (U.S. survey feet)

Type of monument: Harrison, 4" disk 'Section Corner'

Depth: One inch below adjacent road surface

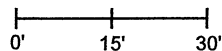
Indiana tie card references:

IN02_T19NR2W22_72 IN02_T19NR2W21_80

IN02_T19NR2W28_08 IN02_T19NR2W27_00

CORNER WITNESS DETAIL

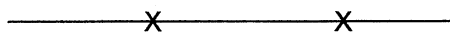
SCALE 1" = 30'



A - Boone County witness mark, flush, 18.6'

B - Mag nail set in E. side wood corner post, 2' a.g., 21.5'

C - Mag nail set in S. side power pole, 2' a.g., 78.1'



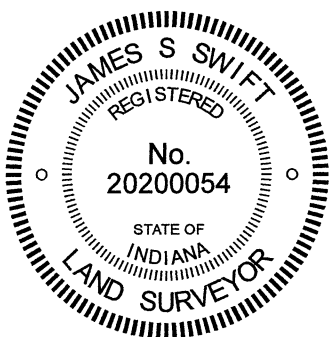
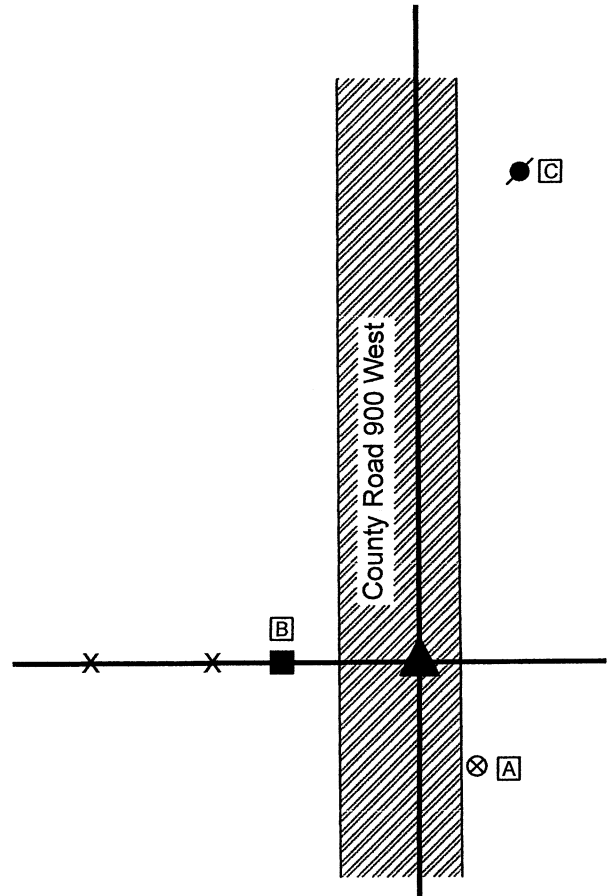
- wire fence

The Harrison monument was set over a stone found.

A BCS record dated 1917 states, with respect to this corner, "Set Rock. Under 7" x 8" x 9". Top 5" x 6" x 6" +." A BCS tie card August 26, 1969 states 'No Stone Located.'

This corner was excavated on September 23, 2021. Prior to excavation, a vertical section of railroad rail was found at 3 inches below grade. The rail is not mentioned in the 1969 tie card but was most likely set at that time by that crew, as setting railroad rails was a standard practice of BCS field crews from that era. Excavation revealed a stone found at 6 inches deep, east of the rail. The stone was in the fill material of the road bed, but was oriented in cardinal directions. The stone measured 7 inches E-W by 7 inches N-S by 4 inches tall, approximating but not quite matching the dimensions of the top rock described in the 1917 record. No specific marks were detected on the stone, perhaps due to the remarkably rough surface of the rock. Further excavation revealed another stone found directly below the top stone at 12 inches deep. The west edge of this stone was exposed. The stone was vertical and oriented in cardinal directions, measuring 9 inches tall by 7 inches N-S. The east-west dimension was measured as 7 inches at 3 inches down from the top of the stone. No specific marks were observed on the stone, nor were any called for in description. The stone was accepted as being the lower monument called for in the 1917 record and was held as marking the corner. The stone was left in place and a Harrison monument was set directly over the top, high point. The railroad rail, removed during excavation, had been 2.2 feet west of the stone. Both the stone and the rail were at the easterly prolongation of a fence to the west.

This corner was originally established as a wood post in 1829.



Kenneth E. Hedge
 Kenneth E. Hedge, County Surveyor

James S. Swift
 James S. Swift, IN LS 20200054
 September 29, 2021

Jefferson Township

Section 21 T19N, R2W	Section 22 T19N, R2W
Section 28 T19N, R2W	Section 27 T19N, R2W