

# SECTION CORNER RECORD

# NE 100-300

## BOONE COUNTY SURVEYOR'S OFFICE

State Plane grid coordinates NAD83 (CORS96):

North: 1751007.27 East: 3140451.53 (U.S. survey feet)

Type of monument: Harrison, 4" disk 'Section Corner'

Depth: One inch below adjacent road surface

Indiana tie card references:

IN02\_T19NR1E27\_72

IN02\_T19NR1E28\_80

IN02\_T19NR1E33\_08

IN02\_T19NR1E34\_00

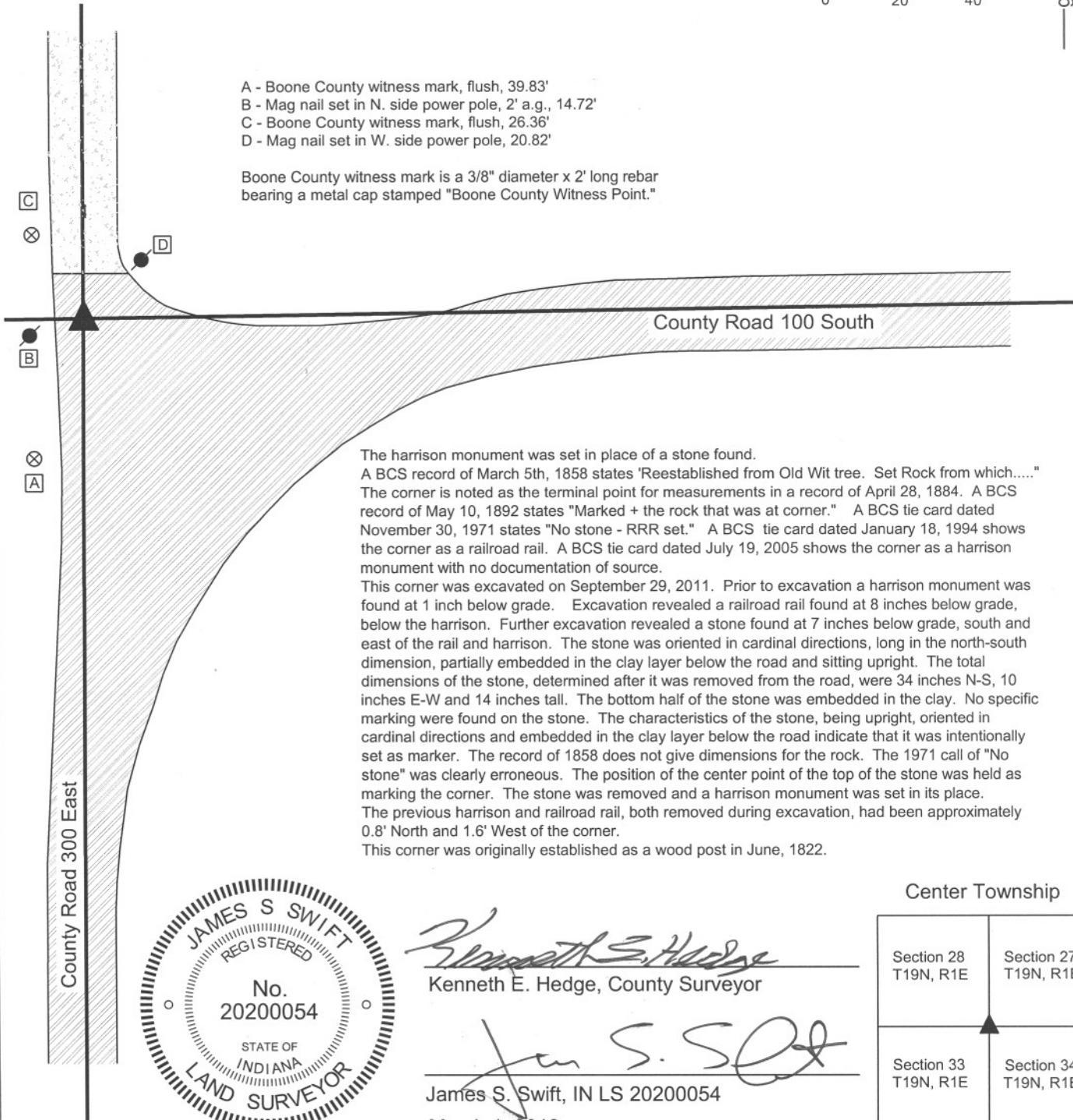
### CORNER WITNESS DETAIL

SCALE 1" = 40'



- A - Boone County witness mark, flush, 39.83'
- B - Mag nail set in N. side power pole, 2' a.g., 14.72'
- C - Boone County witness mark, flush, 26.36'
- D - Mag nail set in W. side power pole, 20.82'

Boone County witness mark is a 3/8" diameter x 2' long rebar bearing a metal cap stamped "Boone County Witness Point."

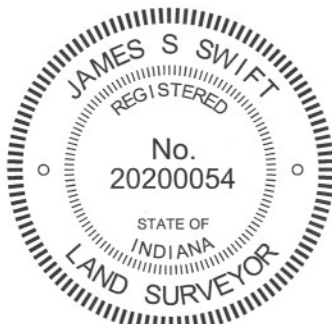


The harrison monument was set in place of a stone found.

A BCS record of March 5th, 1858 states "Reestablished from Old Wit tree. Set Rock from which....." The corner is noted as the terminal point for measurements in a record of April 28, 1884. A BCS record of May 10, 1892 states "Marked + the rock that was at corner." A BCS tie card dated November 30, 1971 states "No stone - RRR set." A BCS tie card dated January 18, 1994 shows the corner as a railroad rail. A BCS tie card dated July 19, 2005 shows the corner as a harrison monument with no documentation of source.

This corner was excavated on September 29, 2011. Prior to excavation a harrison monument was found at 1 inch below grade. Excavation revealed a railroad rail found at 8 inches below grade, below the harrison. Further excavation revealed a stone found at 7 inches below grade, south and east of the rail and harrison. The stone was oriented in cardinal directions, long in the north-south dimension, partially embedded in the clay layer below the road and sitting upright. The total dimensions of the stone, determined after it was removed from the road, were 34 inches N-S, 10 inches E-W and 14 inches tall. The bottom half of the stone was embedded in the clay. No specific marking were found on the stone. The characteristics of the stone, being upright, oriented in cardinal directions and embedded in the clay layer below the road indicate that it was intentionally set as marker. The record of 1858 does not give dimensions for the rock. The 1971 call of "No stone" was clearly erroneous. The position of the center point of the top of the stone was held as marking the corner. The stone was removed and a harrison monument was set in its place. The previous harrison and railroad rail, both removed during excavation, had been approximately 0.8' North and 1.6' West of the corner.

This corner was originally established as a wood post in June, 1822.



*Kenneth E. Hedge*  
 Kenneth E. Hedge, County Surveyor

*James S. Swift*  
 James S. Swift, IN LS 20200054  
 March 1, 2012

### Center Township

Section 28 T19N, R1E	Section 27 T19N, R1E
Section 33 T19N, R1E	Section 34 T19N, R1E

PHOTOGRAPHIC DOCUMENTATION

Date of photography: September 29, 2011

View of the stone as first exposed.



View of the stone with more exposed.



View of the stone from the west, looking down county Road 100 North from the intersection.



For details and documentation, refer to related sheet "Section Corner Record."

# SECTION CORNER RECORD

## BOONE COUNTY SURVEYOR'S OFFICE

NE 100-350

State Plane grid coordinates NAD83 (CORS96):  
 North: 1751043.88 East: 3143103.22 (U.S. survey feet)

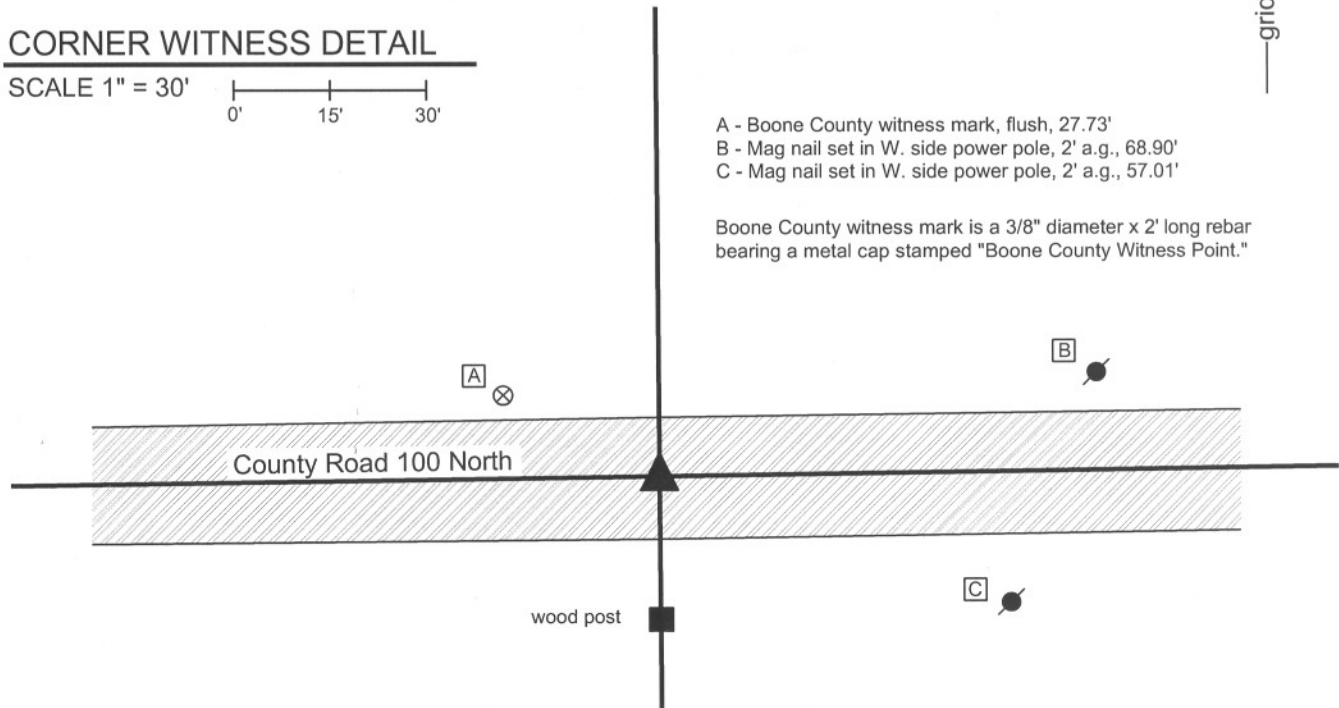
Type of monument: Harrison, 4" disk 'Section Corner'  
 Depth: One inch below adjacent road surface

Indiana tie card references:  
 IN02\_T19NR1E27\_76  
 IN02\_T19NR1E34\_04



### CORNER WITNESS DETAIL

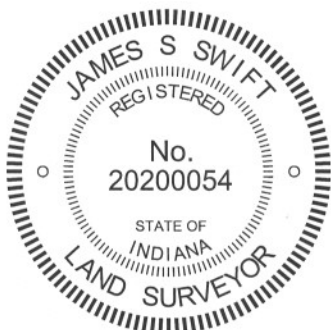
SCALE 1" = 30'



- A - Boone County witness mark, flush, 27.73'
- B - Mag nail set in W. side power pole, 2' a.g., 68.90'
- C - Mag nail set in W. side power pole, 2' a.g., 57.01'

Boone County witness mark is a 3/8" diameter x 2' long rebar bearing a metal cap stamped "Boone County Witness Point."

The harrison monument was set over a vertical section of railroad rail found.  
 A BCS record of March 5, 1858 states "Reestablished from Old Wit trees. Set a Rock 10 by 10 from which....." A BCS tie card dated July, 1968 states "stone found." A BCS tie card dated August 2, 2005 shows the corner as a harrison monument with no documentation of source.  
 This corner was excavated on September 30, 2011. Prior to excavation, a harrison monument was found at the surface. Excavation revealed a railroad rail found at 12 inches deep, directly below the harrison. No other monuments were found. It is known that it was a common practice for BCS crews in the late 1960s to remove a stone, when found, and replace it with a railroad rail. The documentation for such events typically states "stone found" with no mention of the removal of the stone or placement of the rail. It appears that the same procedure was followed for this corner. The railroad rail was left in place and a new harrison monument was set in place of the old harrison, directly over the rail. The top 3 inches of the rail were encased in concrete, anchoring the new harrison to the existing rail.  
 This corner was originally established as a wood post in June, 1822.



*Kenneth E. Hedge*  
 Kenneth E. Hedge, County Surveyor

*James S. Swift*  
 James S. Swift, IN LS 20200054  
 March 1, 2012



# SECTION CORNER RECORD

NE 100-400

## BOONE COUNTY SURVEYOR'S OFFICE

State Plane grid coordinates NAD83 (CORS96):

North: 1751081.15 East: 3145754.89 (U.S. survey feet)

Type of monument: Harrison, 4" disk 'Section Corner'

Depth: One inch below adjacent road surface

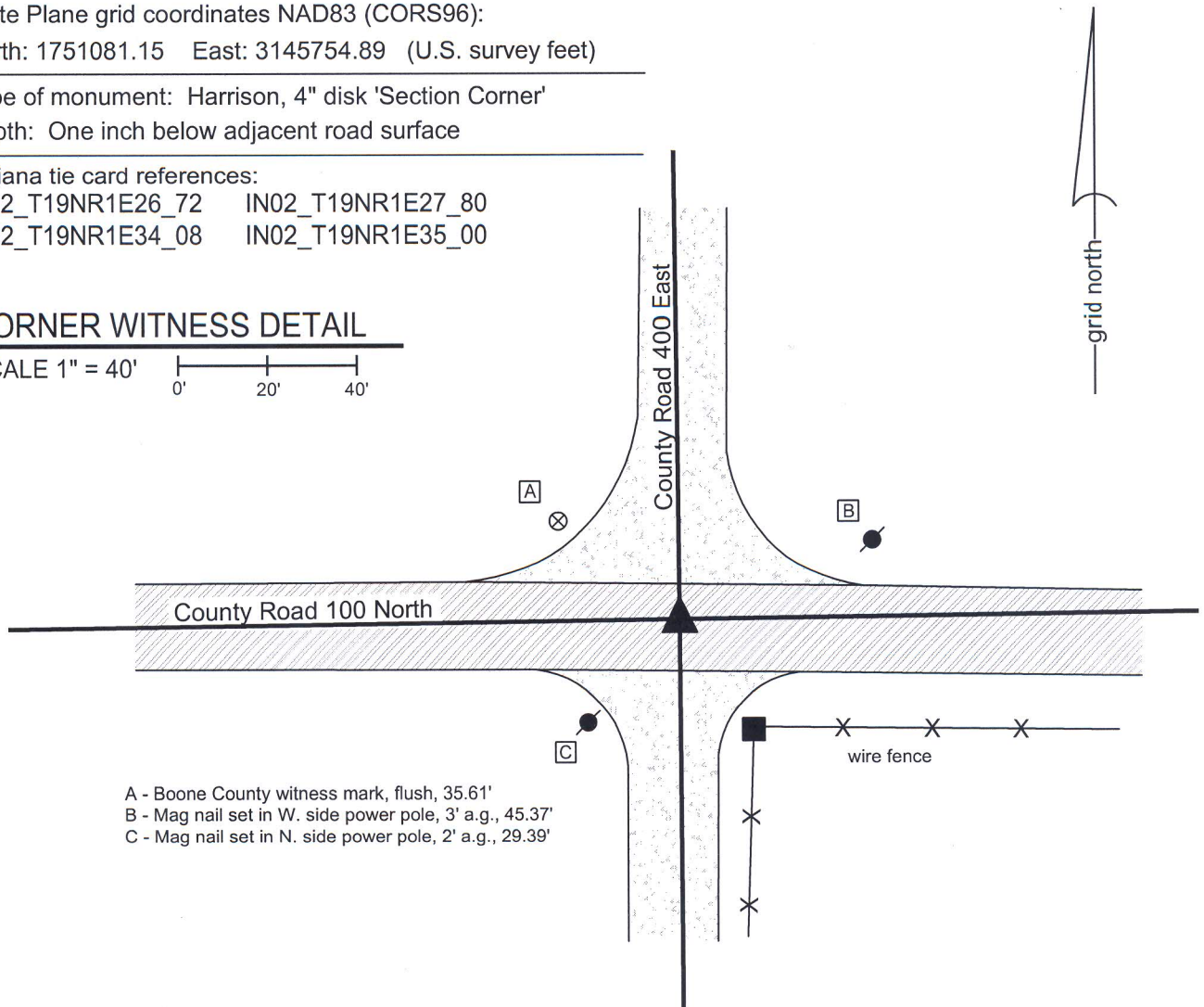
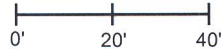
Indiana tie card references:

IN02\_T19NR1E26\_72 IN02\_T19NR1E27\_80

IN02\_T19NR1E34\_08 IN02\_T19NR1E35\_00

### CORNER WITNESS DETAIL

SCALE 1" = 40'



- A - Boone County witness mark, flush, 35.61'
- B - Mag nail set in W. side power pole, 3' a.g., 45.37'
- C - Mag nail set in N. side power pole, 2' a.g., 29.39'

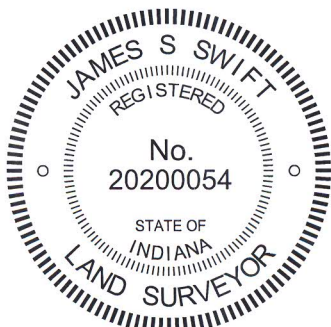
The harrison monument was set in place of a railroad rail found.

A BCS record of February, 1871 states "Reestablished from stump of Sugar and stake. Set Rock 13.6.5-1/2 +. A brick bat marked + under it." A BCS tie card dated June, 1968 shows the corner, but does not state any information about a monument. However, the field notes associated with that tie card state "stone found." A BCS tie card dated July, 28, 2005 shows the corner as a harrison monument with no documentation of source.

This corner was excavated on September 30, 2011. Prior to excavation a harrison monument was found at the surface. Excavation revealed a railroad rail found at 8 inches below grade, generally below the harrison, but approximately 0.1' N and 0.1' E of the position of the center of the harrison. No further evidence was found. It is known that it was a common practice for BCS crews in the late 1960s to remove a stone, when found, and replace it with a railroad rail. The documentation for such events typically states "stone found" with no mention of the removal of the stone or placement of the rail. It appears that the same procedure was followed for this corner.

The railroad rail and harrison were both removed during excavation. A new harrison monument was set in place of the railroad rail.

This corner was originally established as a wood post in June, 1822.



*Kenneth E. Hedge*  
 Kenneth E. Hedge, County Surveyor

*James S. Swift*  
 James S. Swift, IN LS 20200054  
 January 15, 2013

Center Township

Section 27 T19N, R1E	Section 26 T19N, R1E
Section 34 T19N, R1E	Section 35 T19N, R1E

# SECTION CORNER RECORD

## BOONE COUNTY SURVEYOR'S OFFICE

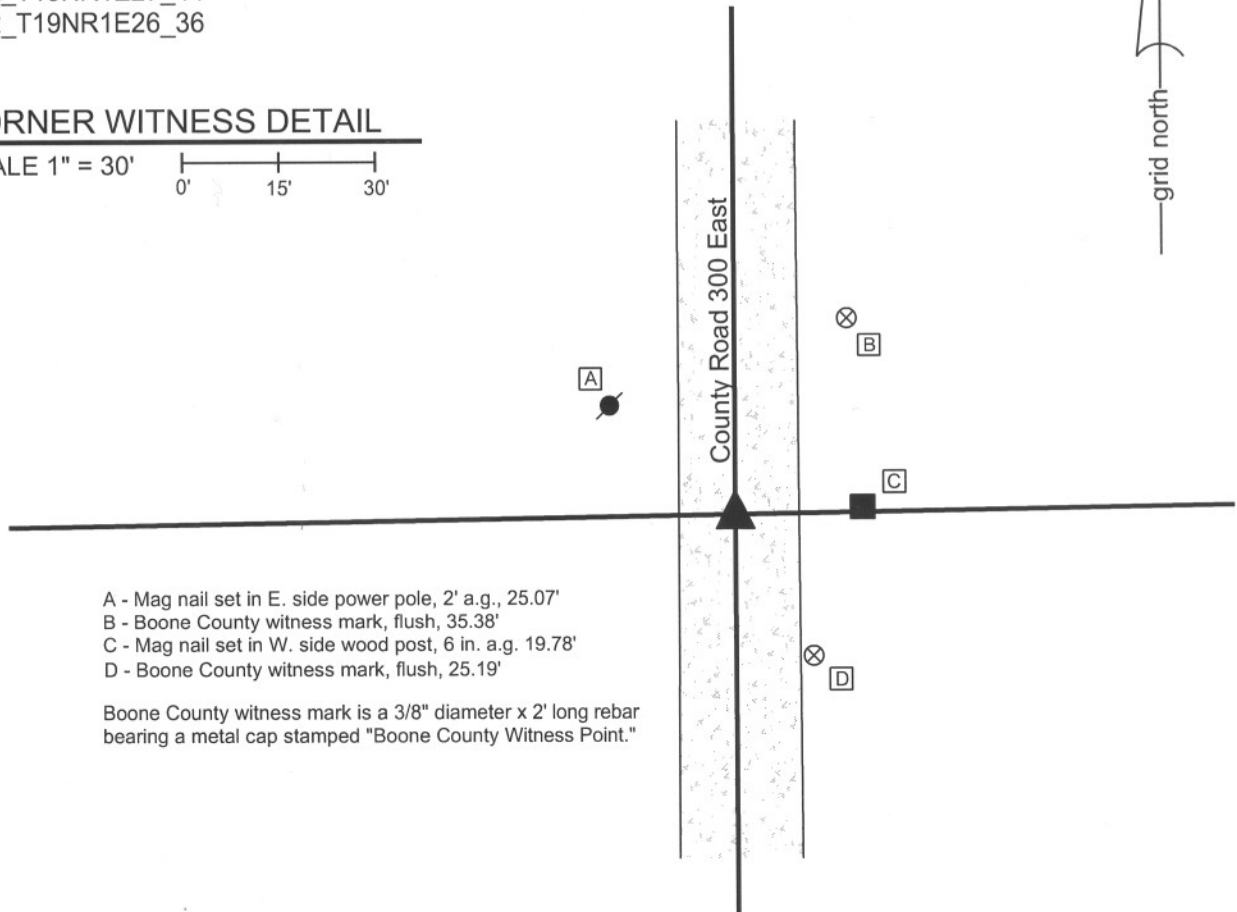
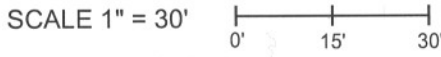
NE 150-300

State Plane grid coordinates NAD83 (NSRS 2007):  
 North: 1753647.38 East: 3140444.20 (U.S. survey feet)

Type of monument: Harrison, 4" disk 'Section Corner'  
 Depth: six inches below adjacent gravel road surface

Indiana tie card references:  
 IN02\_T19NR1E27\_44  
 IN02\_T19NR1E26\_36

### CORNER WITNESS DETAIL

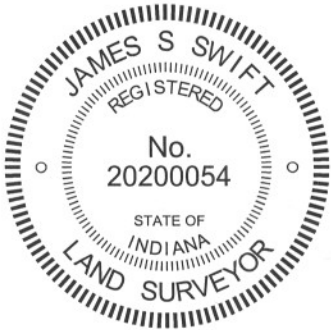


- A - Mag nail set in E. side power pole, 2' a.g., 25.07'
- B - Boone County witness mark, flush, 35.38'
- C - Mag nail set in W. side wood post, 6 in. a.g. 19.78'
- D - Boone County witness mark, flush, 25.19'

Boone County witness mark is a 3/8" diameter x 2' long rebar bearing a metal cap stamped "Boone County Witness Point."

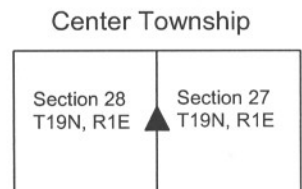
The harrison monument was set in place of a vertical section of railroad rail found. A BCS record of April 28, 1884 states "Reestablished by continuing and doubling line 1,2 Sect. 27 and continuing and doubling line F, f Sect. 27 and measuring line C,E to the points as above all of which varied less than 1 link of same point. Rock Set 15x8x7 mark +." A BCS tie card dated May 29, 1967 states "small stone found." A BCS tie card dated July 22, 2005 shows the corner as a steel rail with no documentation of source. Prior to excavation a railroad rail was found approximately one inch below the adjacent gravel road surface. Excavation revealed no other evidence of the corner. It is known that it was a common practice for BCS crews in the late 1960s to remove a stone, when found, and replace it with a railroad rail. The documentation for such events typically states "stone found" with no mention of the removal of the stone or placement of the rail. It appears that the same procedure was followed for this corner. The position of the railroad rail was held as the corner. The rail was removed during excavation and was replaced with a harrison monument.

This corner was originally established as a wood post in June, 1822.



*Kenneth E. Hedge*  
 \_\_\_\_\_  
 Kenneth E. Hedge, County Surveyor

*James S. Swift*  
 \_\_\_\_\_  
 James S. Swift, IN LS 20200054  
 March 1, 2012



# SECTION CORNER RECORD

## BOONE COUNTY SURVEYOR'S OFFICE

NE 150-400

State Plane grid coordinates NAD83 (CORS96):  
 North: 1753727.21 East: 3145723.99 (U.S. survey feet)

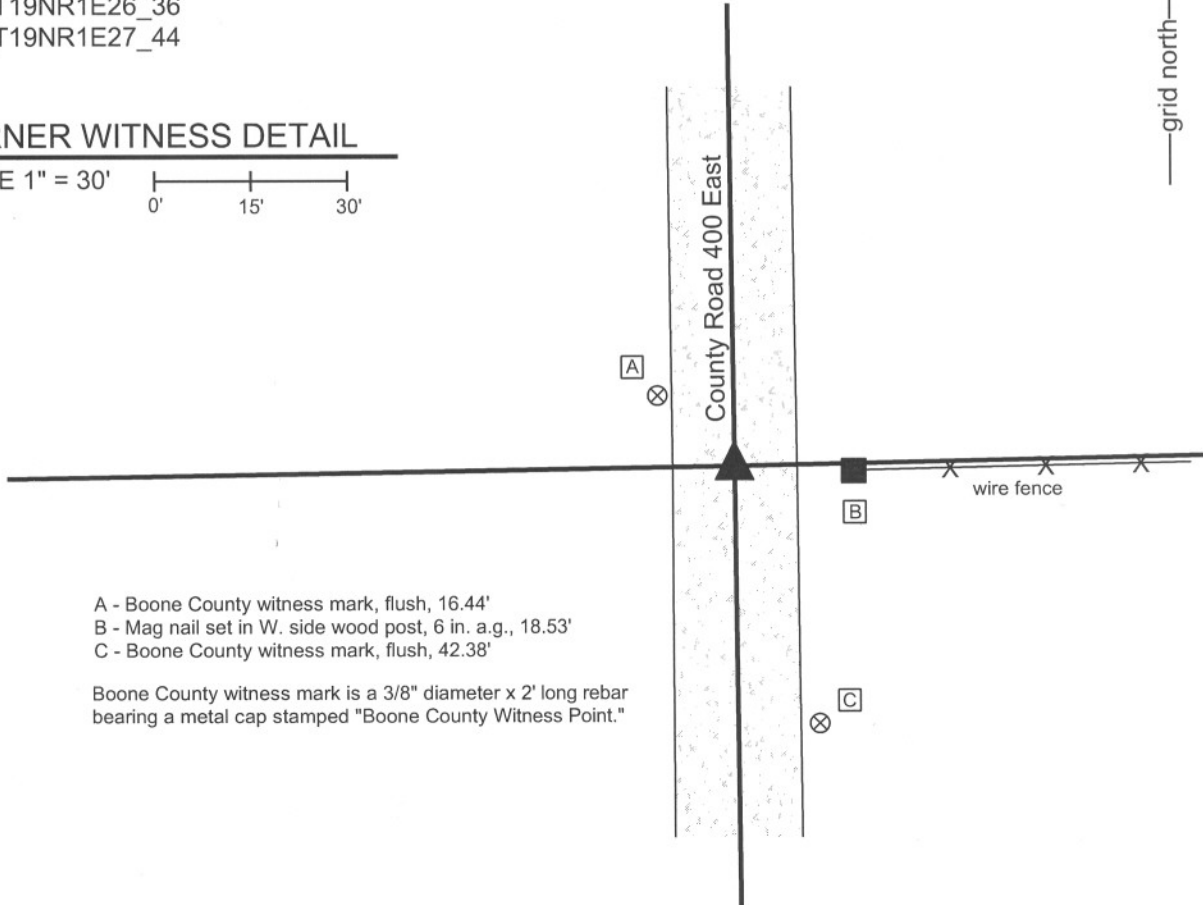
Type of monument: Harrison, 4" disk 'Section Corner'  
 Depth: Six inches below adjacent gravel road surface

Indiana tie card references:  
 IN02\_T19NR1E26\_36  
 IN02\_T19NR1E27\_44



### CORNER WITNESS DETAIL

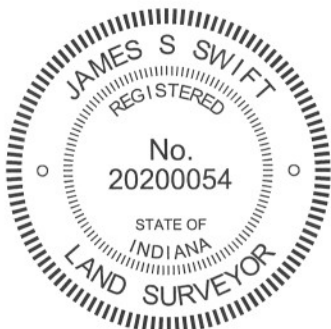
SCALE 1" = 30'



- A - Boone County witness mark, flush, 16.44'
- B - Mag nail set in W. side wood post, 6 in. a.g., 18.53'
- C - Boone County witness mark, flush, 42.38'

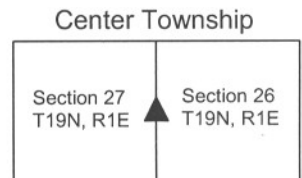
Boone County witness mark is a 3/8" diameter x 2' long rebar bearing a metal cap stamped "Boone County Witness Point."

The harrison monument was set in place of a vertical section of railroad rail found. A BCS record of March 5, 1858 states "Reestablished. Set Rock 10 by 12 in." A BCS record of August 4-5, 1868 states "Rock was set 4 lks too from Oak." (Note: the record does not qualify too "what.") A BCS tie card dated September 22, 1971 states "No stone. RRR put in." A BCS tie card dated July 22, 2005 states shows the corner as a steel rail. This corner was excavated on March 2, 2010. Prior to excavation a railroad rail was found at 2 inches below the surface of the gravel road. Excavation of an area extending 4 feet north, 6 feet east, 10 feet south and 4 feet west of the rail yielded no further evidence of the corner. The gravel road bed in this vicinity is approximately 1 foot thick. Excavation was extended to a minimum of 20 inches deep. The rail was in the approximate center of the north-south county road and slightly north of the westerly extension of an old fence to the east. The position of the rail was held as the best available evidence of the corner. The rail was removed during excavation and was replaced with a harrison monument. This corner was originally established as a wood post in June, 1822.



*Kenneth E. Hedge*  
 Kenneth E. Hedge, County Surveyor

*James S. Swift*  
 James S. Swift, IN LS 20200054  
 March 1, 2012



# SECTION CORNER RECORD

## BOONE COUNTY SURVEYOR'S OFFICE

NE 200-300

State Plane grid coordinates NAD83 (CORS96):

North: 1756286.78 East: 3140437.82 (U.S. survey feet)

Type of monument: Harrison, 4" disk 'Section Corner'

Depth: six inches below adjacent gravel road surface

Indiana tie card references:

IN02\_T19NR1E21\_80 IN02\_T19NR1E22\_72

IN02\_T19NR1E28\_08 IN02\_T19NR1E27\_00

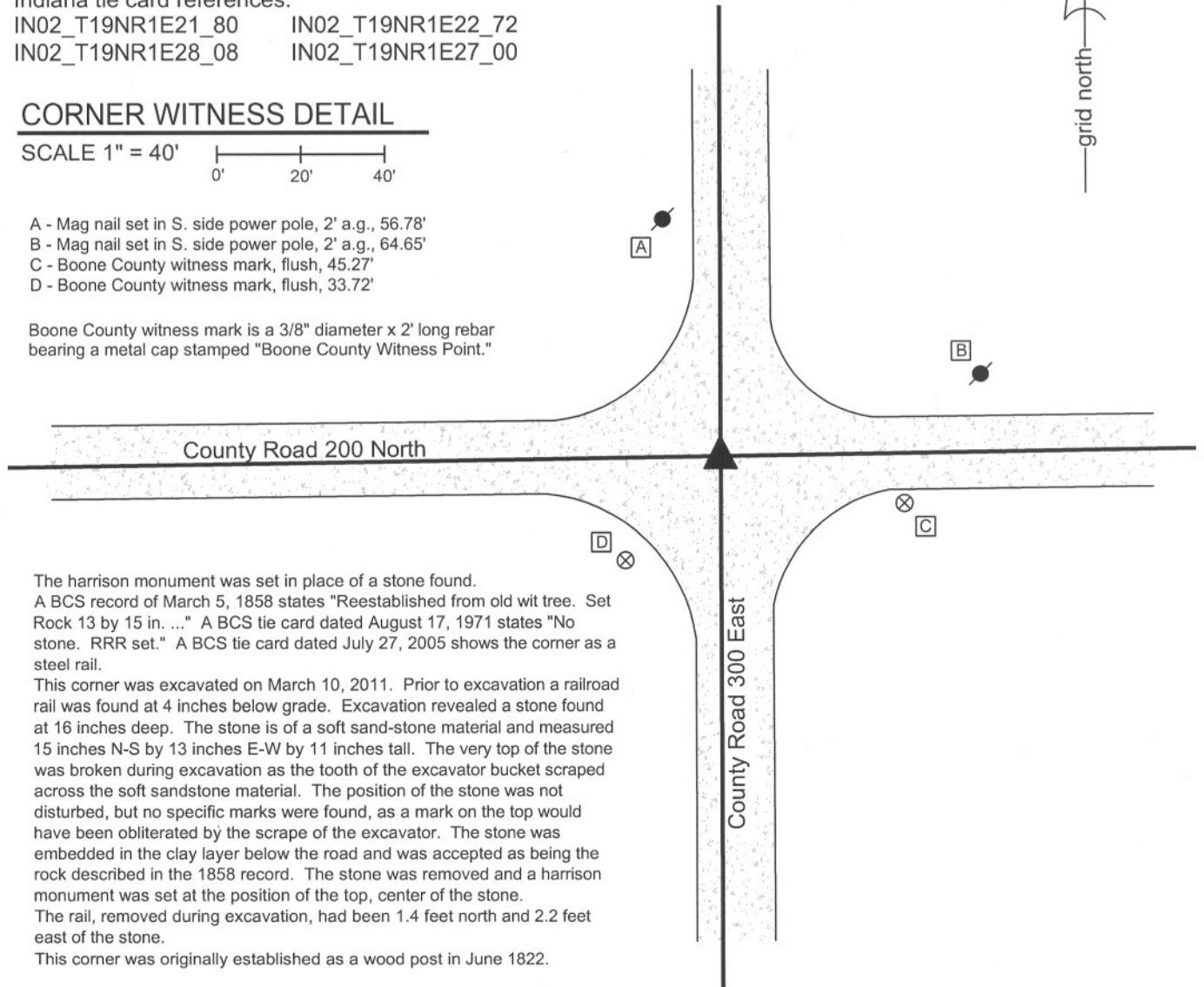
### CORNER WITNESS DETAIL

SCALE 1" = 40'



- A - Mag nail set in S. side power pole, 2' a.g., 56.78'
- B - Mag nail set in S. side power pole, 2' a.g., 64.65'
- C - Boone County witness mark, flush, 45.27'
- D - Boone County witness mark, flush, 33.72'

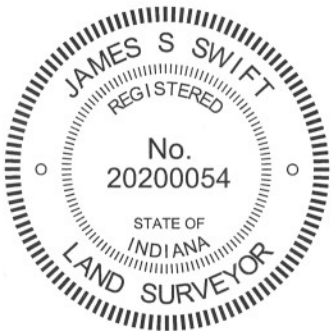
Boone County witness mark is a 3/8" diameter x 2' long rebar bearing a metal cap stamped "Boone County Witness Point."



The harrison monument was set in place of a stone found. A BCS record of March 5, 1858 states "Reestablished from old wit tree. Set Rock 13 by 15 in. ..." A BCS tie card dated August 17, 1971 states "No stone. RRR set." A BCS tie card dated July 27, 2005 shows the corner as a steel rail.

This corner was excavated on March 10, 2011. Prior to excavation a railroad rail was found at 4 inches below grade. Excavation revealed a stone found at 16 inches deep. The stone is of a soft sand-stone material and measured 15 inches N-S by 13 inches E-W by 11 inches tall. The very top of the stone was broken during excavation as the tooth of the excavator bucket scraped across the soft sandstone material. The position of the stone was not disturbed, but no specific marks were found, as a mark on the top would have been obliterated by the scrape of the excavator. The stone was embedded in the clay layer below the road and was accepted as being the rock described in the 1858 record. The stone was removed and a harrison monument was set at the position of the top, center of the stone. The rail, removed during excavation, had been 1.4 feet north and 2.2 feet east of the stone.

This corner was originally established as a wood post in June 1822.



*Kenneth E. Hedge*  
 Kenneth E. Hedge, County Surveyor

*James S. Swift*  
 James S. Swift, IN LS 20200054  
 March 1, 2012

Center Township

Section 21 T19N, R1E	Section 22 T19N, R1E
Section 28 T19N, R1E	Section 27 T19N, R1E

PHOTOGRAPHIC DOCUMENTATION

Date of photography: March 10, 2011

View of the stone from the north, looking south along County Road 300 East.



For details and documentation, refer to related sheet "Section Corner Record."



# SECTION CORNER RECORD

## BOONE COUNTY SURVEYOR'S OFFICE

NE 200-350

State Plane grid coordinates NAD83 (CORS 96):

North: 1756326.25 East: 3143064.79 (U.S. survey feet)

Type of monument: Harrison, 4" disk 'Section Corner'

Depth: six inches below adjacent gravel road surface

Indiana tie card references:

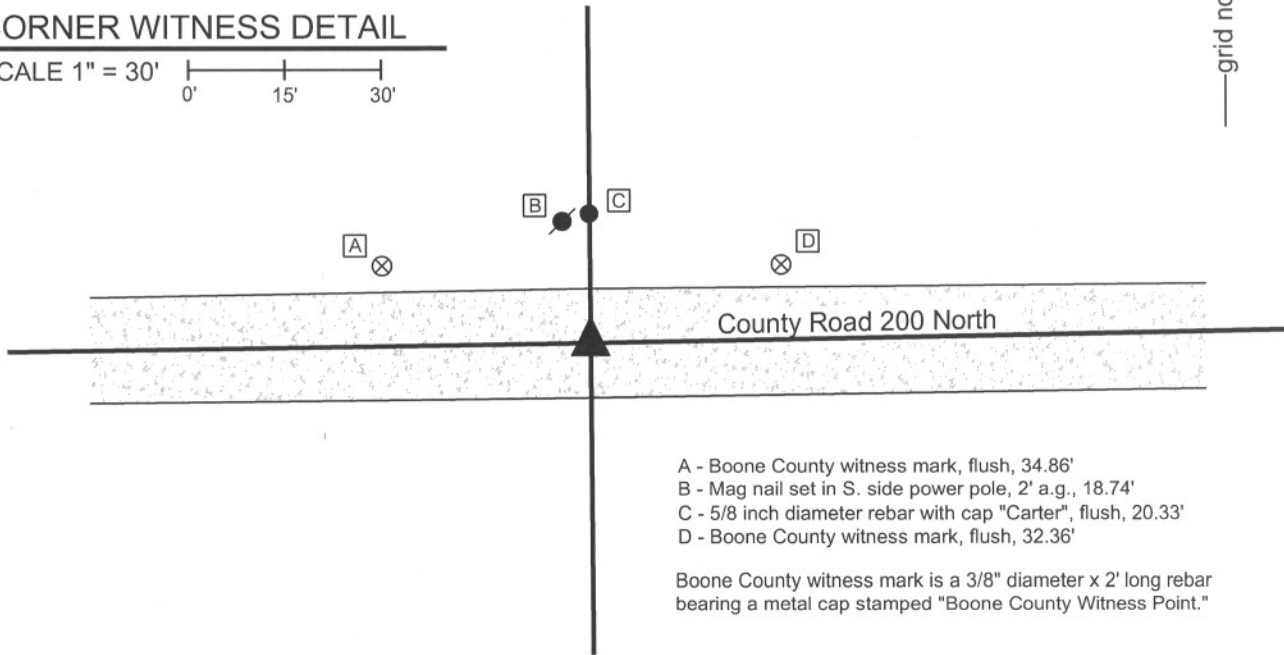
IN02\_T19NR1E22\_76

IN02\_T19NR1E27\_04



### CORNER WITNESS DETAIL

SCALE 1" = 30'



- A - Boone County witness mark, flush, 34.86'
- B - Mag nail set in S. side power pole, 2' a.g., 18.74'
- C - 5/8 inch diameter rebar with cap "Carter", flush, 20.33'
- D - Boone County witness mark, flush, 32.36'

Boone County witness mark is a 3/8" diameter x 2' long rebar bearing a metal cap stamped "Boone County Witness Point."

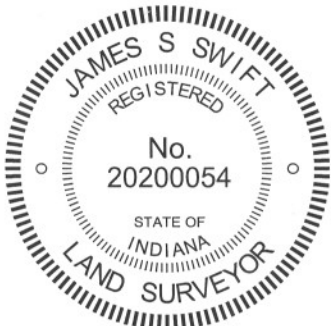
The harrison monument was set in place of a vertical section of railroad rail found.

A BCS record of March 5, 1858 states "Set Rock 12 by 16 in. ..." A BCS tie card dated August 1, 2005 shows the corner as a steel rail with no documentation of source.

This corner was excavated on March 11, 2011. Prior to excavation a vertical section of railroad rail was found at 11 inches below grade. No other specific evidence of the corner was found in an area of excavation extending 4 feet in each direction from the railroad rail. The cross-section of the road bed in this vicinity is not typical of cross-sections found at most corners excavated. The road bed is approximately 11 inches thick, hence the rail was at the bottom of the primary road bed. Below the road bed is a material of dense, compressed black dirt rather than the clay material typically found below the road bed. Curiously, the elevation of the dense black dirt material is above the grade of the surrounding fields. This may represent some form of a fill material introduced to bring up a low area of road. One explanation for the lack of the record stone may be that it was removed in association with the introduction of the fill material, if indeed, fill material was introduced. Another explanation is that the record stone may have been found and replaced with the railroad rail at some point in the late 1960s or early 1970s. It is known that removal of a found stone and replacement with a railroad rail was a common practice of BCS field crews in that time frame. No documentation, in the form of field notes or tie cards, was found supporting this possible explanation. The reference to the rail in the 2005 tie card indicates that the rail was found, not set, at that time. The position of the rail does fit with the other evidence of the corner, being in the center of the east-west road at the southerly extension of a field division to the north.

The railroad rail was accepted as the best evidence of the location of the corner and was held as marking such. The rail was removed during excavation and was replaced with a harrison monument in the same position.

This corner was originally established as a wood post in June, 1822.



*Kenneth E. Hedge*  
 Kenneth E. Hedge, County Surveyor

*James S. Swift*  
 James S. Swift, IN LS 20200054

March 1, 2012

Center Township

Section 22  
T19N, R1E

Section 27  
T19N, R1E

# SECTION CORNER RECORD

## BOONE COUNTY SURVEYOR'S OFFICE

NE 200-400

State Plane grid coordinates NAD83 (CORS96):  
 North: 1756371.85 East: 3145690.21 (U.S. survey feet)

Type of monument: Harrison, 4" disk 'Section Corner'  
 Depth: six inches below adjacent gravel road surface

Indiana tie card references:  
 IN02\_T19NR1E22\_80      IN02\_T19NR1E23\_72  
 IN02\_T19NR1E27\_08      IN02\_T19NR1E26\_00

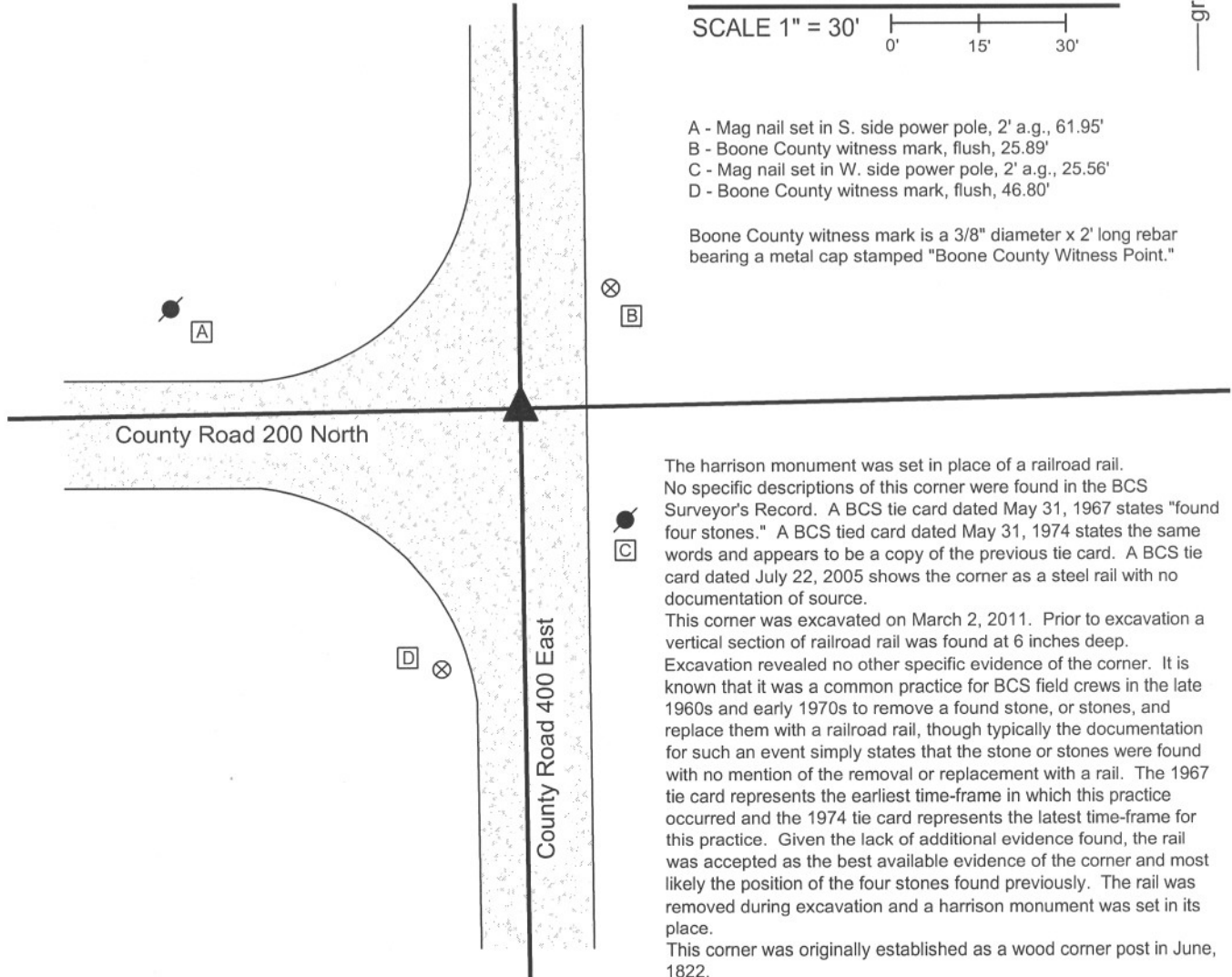
### CORNER WITNESS DETAIL

SCALE 1" = 30'



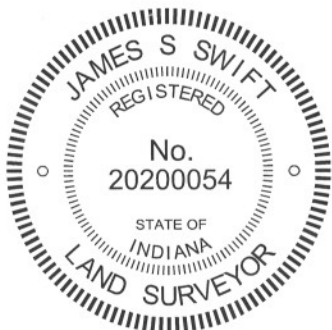
- A - Mag nail set in S. side power pole, 2' a.g., 61.95'
- B - Boone County witness mark, flush, 25.89'
- C - Mag nail set in W. side power pole, 2' a.g., 25.56'
- D - Boone County witness mark, flush, 46.80'

Boone County witness mark is a 3/8" diameter x 2' long rebar bearing a metal cap stamped "Boone County Witness Point."



The harrison monument was set in place of a railroad rail. No specific descriptions of this corner were found in the BCS Surveyor's Record. A BCS tie card dated May 31, 1967 states "found four stones." A BCS tied card dated May 31, 1974 states the same words and appears to be a copy of the previous tie card. A BCS tie card dated July 22, 2005 shows the corner as a steel rail with no documentation of source.

This corner was excavated on March 2, 2011. Prior to excavation a vertical section of railroad rail was found at 6 inches deep. Excavation revealed no other specific evidence of the corner. It is known that it was a common practice for BCS field crews in the late 1960s and early 1970s to remove a found stone, or stones, and replace them with a railroad rail, though typically the documentation for such an event simply states that the stone or stones were found with no mention of the removal or replacement with a rail. The 1967 tie card represents the earliest time-frame in which this practice occurred and the 1974 tie card represents the latest time-frame for this practice. Given the lack of additional evidence found, the rail was accepted as the best available evidence of the corner and most likely the position of the four stones found previously. The rail was removed during excavation and a harrison monument was set in its place. This corner was originally established as a wood corner post in June, 1822.



*Kenneth E. Hedge*  
 Kenneth E. Hedge, County Surveyor

*James S. Swift*  
 James S. Swift, IN LS 20200054  
 March 1, 2012

Center Township

Section 22 T19N, R1E	Section 23 T19N, R1E
Section 27 T19N, R1E	Section 26 T19N, R1E