

SECTION CORNER RECORD

BOONE COUNTY SURVEYOR'S OFFICE


SW 400-800

State Plane grid coordinates NAD83 (2011):
 North: 1724169.54 East: 3082642.75 (U.S. survey feet)

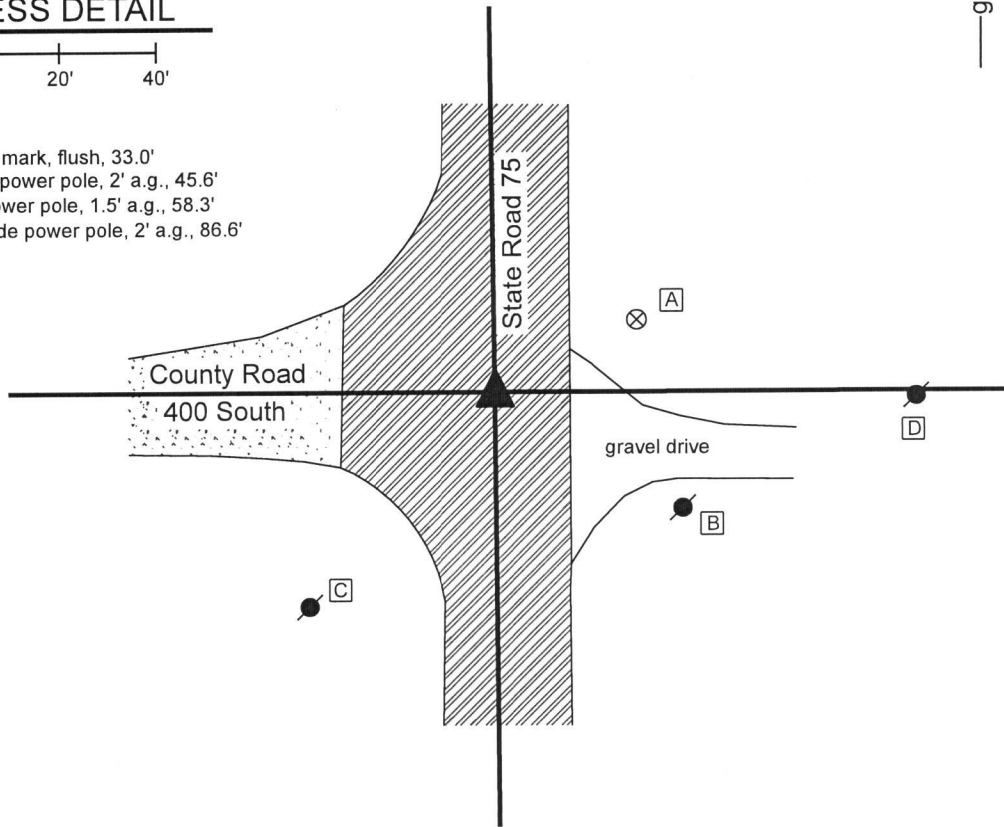
Type of monument: INDOT Type B monument
 Depth: flush with adjacent road surface

Indiana tie card references:
 IN02_T18NR2W22_80 IN02_T18NR2W23_72
 IN02_T18NR2W27_08 IN02_T18NR2W26_00

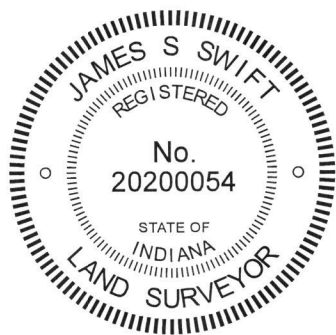
CORNER WITNESS DETAIL

SCALE 1" = 40'


- A - Boone County witness mark, flush, 33.0'
- B - Mag nail set in N. side power pole, 2' a.g., 45.6'
- C - Nail fnd in N.E. side power pole, 1.5' a.g., 58.3'
- D - Mag nail set in S.W. side power pole, 2' a.g., 86.6'



The INDOT Type B monument was found in place.
 A BCS tie card dated December, 2003 shows the corner to be a PK nail found in patch. In 2004 or later, INDOT replaced the nail with a Type B monument in the same position. Though the origin of the position of the monument is not known, it fits with local evidence in the form of the intersection of the existing roadways. This corner was not excavated, being in a state highway. The Type B monument is held as marking the corner. This corner was originally established as a wood post in 1820.



Kenneth E. Hedge
 Kenneth E. Hedge, County Surveyor

James S. Swift
 James S. Swift, IN LS 20200054
 March 13, 2019

Jackson Township

Section 22 T18N, R2W	Section 23 T18N, R2W
Section 27 T18N, R2W	Section 26 T18N, R2W

SECTION CORNER RECORD

SW 400-850

BOONE COUNTY SURVEYOR'S OFFICE

State Plane grid coordinates NAD83 (2011):

North: 1724167.74 East: 3079985.14 (U.S. survey feet)

Type of monument: Harrison, 4" disk 'Section Corner'

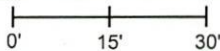
Depth: six inches below adjacent gravel road surface

Indiana tie card references:

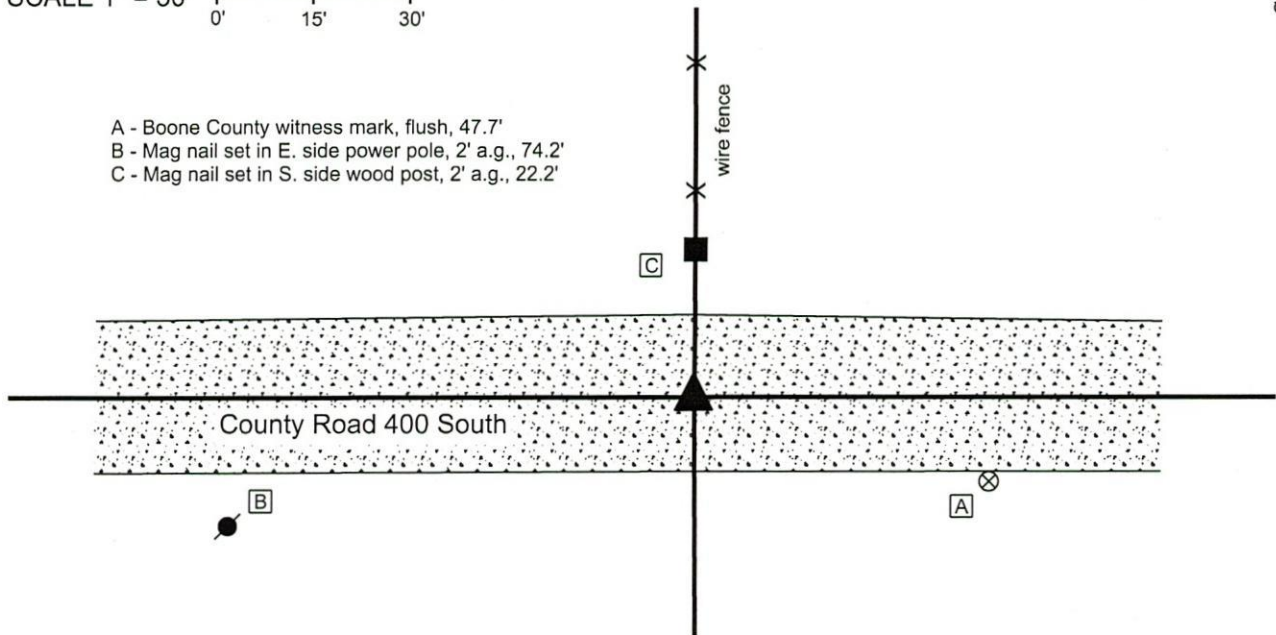
IN02_T18NR2W22_76 IN02_T18NR2W27_04

CORNER WITNESS DETAIL

SCALE 1" = 30'



- A - Boone County witness mark, flush, 47.7'
- B - Mag nail set in E. side power pole, 2' a.g., 74.2'
- C - Mag nail set in S. side wood post, 2' a.g., 22.2'

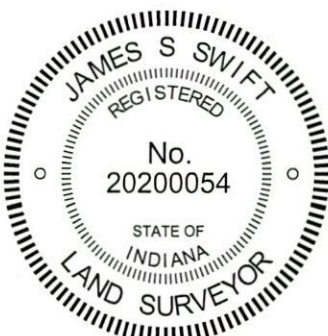


The Harrison monument was set in place of a stone found.

A BCS record dated April 28-29, 1870 states, with respect to this corner, "Reest. two rocks. One rock 7.6.3 + Top Rock 16.12.6 +." A subsequent record November 13, 1893 states "Found from stump of White Oak (F. Sec. 22) lower rock here. Set rock + 20.16.9 over the old one."

No recent BCS tie cards were found referencing this corner. Excavation was performed at this corner on February 10, 2020. Prior to excavation a 5/8 inch diameter rebar with red cap (markings illegible) was found at 4 inches deep in the approximate center of the road, south of an old post on the north side of the road. The source of this rebar is not known. Excavation revealed a small rock found at 3 inches deep, slightly east of the rebar. Further excavation revealed the top stone described in the 1893 record at 8 inches deep, directly below the small stone. The stone was removed and measured to be 19 inches tall by 15 inches E-W by 9 inches N-S, matching or very close to the dimensions recited in the 1893 record. Another stone was found directly below at 29 inches deep. This lower stone was flat and horizontal. The top of the stone was approximately 8 inches N-S by 6 inches E-W and a distinct etched "+" mark was clearly visible on the top, center of the stone. The lower stone was left in place and a Harrison monument was set directly over the etched mark on the top of the stone. The rebar, removed during excavation, had been 0.2 foot north and 0.8 foot west of the mark on the lower stone.

This corner was originally established as a wood post in 1820.



Kenneth E. Hedge
Kenneth E. Hedge, County Surveyor

James S. Swift
James S. Swift, IN LS 20200054
February 19, 2020

Jackson Township

Section 22
T18N, R2W

Section 27
T18N, R2W

SECTION CORNER RECORD

SW 400-900

BOONE COUNTY SURVEYOR'S OFFICE

State Plane grid coordinates NAD83 (2011):

North: 1724165.86 East: 3077331.35 (U.S. survey feet)

Type of monument: Harrison, 4" disk 'Section Corner'

Depth: Six inches below adjacent gravel road surface

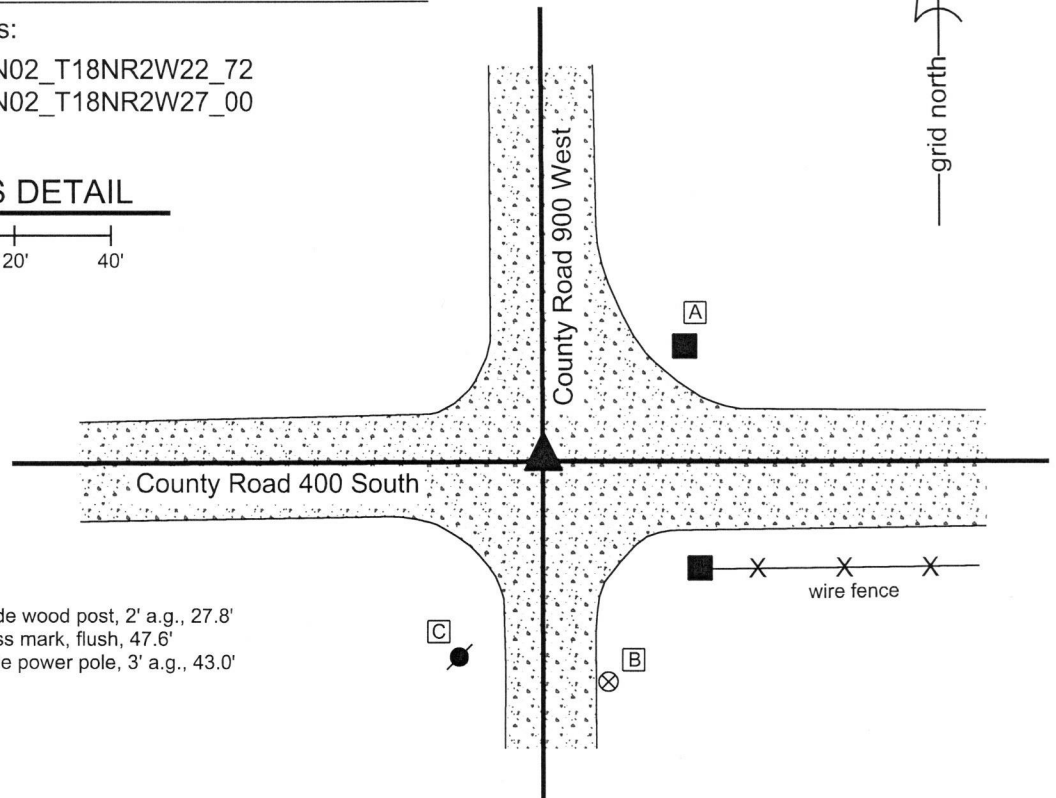
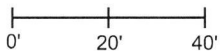
Indiana tie card references:

IN02_T18NR2W21_80 IN02_T18NR2W22_72

IN02_T18NR2W28_08 IN02_T18NR2W27_00

CORNER WITNESS DETAIL

SCALE 1" = 40'

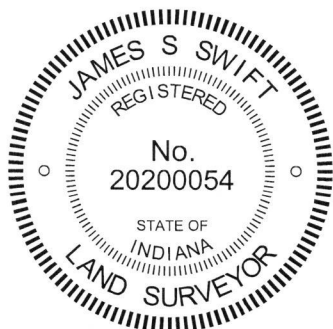


- A - Mag nail set in W. side wood post, 2' a.g., 27.8'
- B - Boone County witness mark, flush, 47.6'
- C - Mag nail set in E. side power pole, 3' a.g., 43.0'

The Harrison monument was set over a stone found. A BCS record of April 20-22, 1870 calls this corner "Rock that was set." A BCS tie card with no date, though evidently originating from the late 1960s or early 1970s, based on the drafting style of the sketch and the names of the crew members, shows this corner as "Stone Located. RRR 7" east of stone."

This corner was excavated on September 28, 2018. Prior to excavation, a section of 5/8 inch rebar was found flush with the road surface. The rebar was bent at 4 inches below the surface of the road, above which point it was generally horizontal and below which point it was generally vertical. Excavation revealed a railroad rail found at 5 inches deep in the same approximate horizontal position as the shaft of the rebar. Further excavation revealed a stone found at 32 inches deep. The stone had a distinct "+" mark at the top, center. With the top 4 inches of the stone exposed, it measured 9 inches N-S by 8 inches E-W. The stone was fully embedded in the clay layer below the road, with the top of the stone coincident with the bottom of the road bed. The "+" mark on the stone was 7 inches west of the railroad rail, in precise conformity with the undated tie card. The tie card clearly indicates that the found stone is held as the corner and that the rail was set 7 inches east, presumably as a witness. It is noted that the section of rail, removed during excavation, was 30 inches long. The vertical separation between the top of the stone and the top of the rail was computed to be 27 inches. It is concluded that the top of the rail was most likely originally set flush with the road bed and that, given that the rail was too long to be placed directly over the stone, the rail was set slightly east of the stone as a witness to the stone. The "+" mark on the top of the stone was held as marking the specific location of the corner and a Harrison monument was set directly over this point. As noted, the rebar and rail, both removed during excavation, had been 7 inches east of the mark on the stone.

This corner was originally established as a wood post in 1820.



Kenneth E. Hedge
Kenneth E. Hedge, County Surveyor

James S. Swift
James S. Swift, IN LS 20200054
October 10, 2018

Jackson Township

Section 21 T18N, R2W	Section 22 T18N, R2W
Section 28 T18N, R2W	Section 27 T18N, R2W

SECTION CORNER RECORD

BOONE COUNTY SURVEYOR'S OFFICE

SW 450-800

State Plane grid coordinates NAD83 (2011):
 North: 1721530.63 East: 3082666.00 (U.S. survey feet)

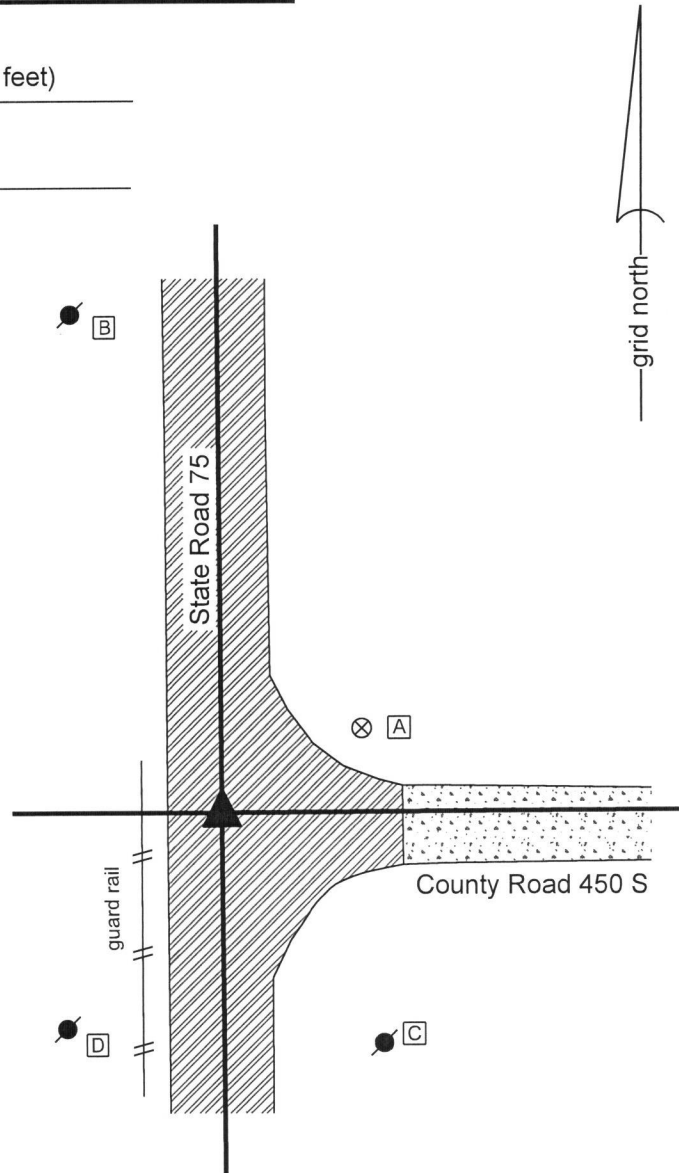
Type of monument: INDOT Type B Monument
 Depth: Flush with adjacent road surface

Indiana tie card references:
 IN02_T18NR2W27_44 IN02_T18NR2W26_36

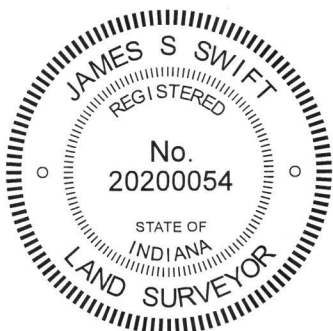
CORNER WITNESS DETAIL

SCALE 1" = 50'

- A - Boone County witness mark, flush, 42.3'
- B - Mag nail set in E. side power pole, 2' a.g., 135.3'
- C - Mag nail set in N. side power pole, 2' a.g., 72.9'
- D - Mag nail set in E. side power pole, 2' a.g., 68.7'



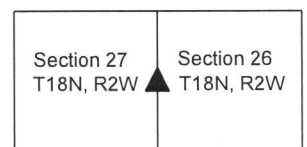
The INDOT Type B monument was found in place. A BCS tie card dated December, 2003 shows the corner to be a PK nail found. In 2004 or later, INDOT replaced the nail with a Type B monument in the same position. Though the origin of the position of the monument is not known, it fits with local evidence in the form of the intersection of the existing roadways. This corner was not excavated, being in a state highway. The Type B monument is held as marking the corner. This corner was originally established as a wood post in 1820.



Kenneth E. Hedge
 Kenneth E. Hedge, County Surveyor

James S. Swift
 James S. Swift, IN LS 20200054
 March 13, 2019

Jackson Township



SECTION CORNER RECORD

SW 450-900

BOONE COUNTY SURVEYOR'S OFFICE

State Plane grid coordinates NAD83 (2011):

North: 1721523.49 East: 3077335.64 (U.S. survey feet)

Type of monument: Harrison, 4" disk 'Section Corner'

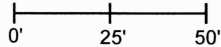
Depth: Flush with adjacent road surface

Indiana tie card references:

IN02_T18NR2W27_36 IN02_T18NR2W28_44

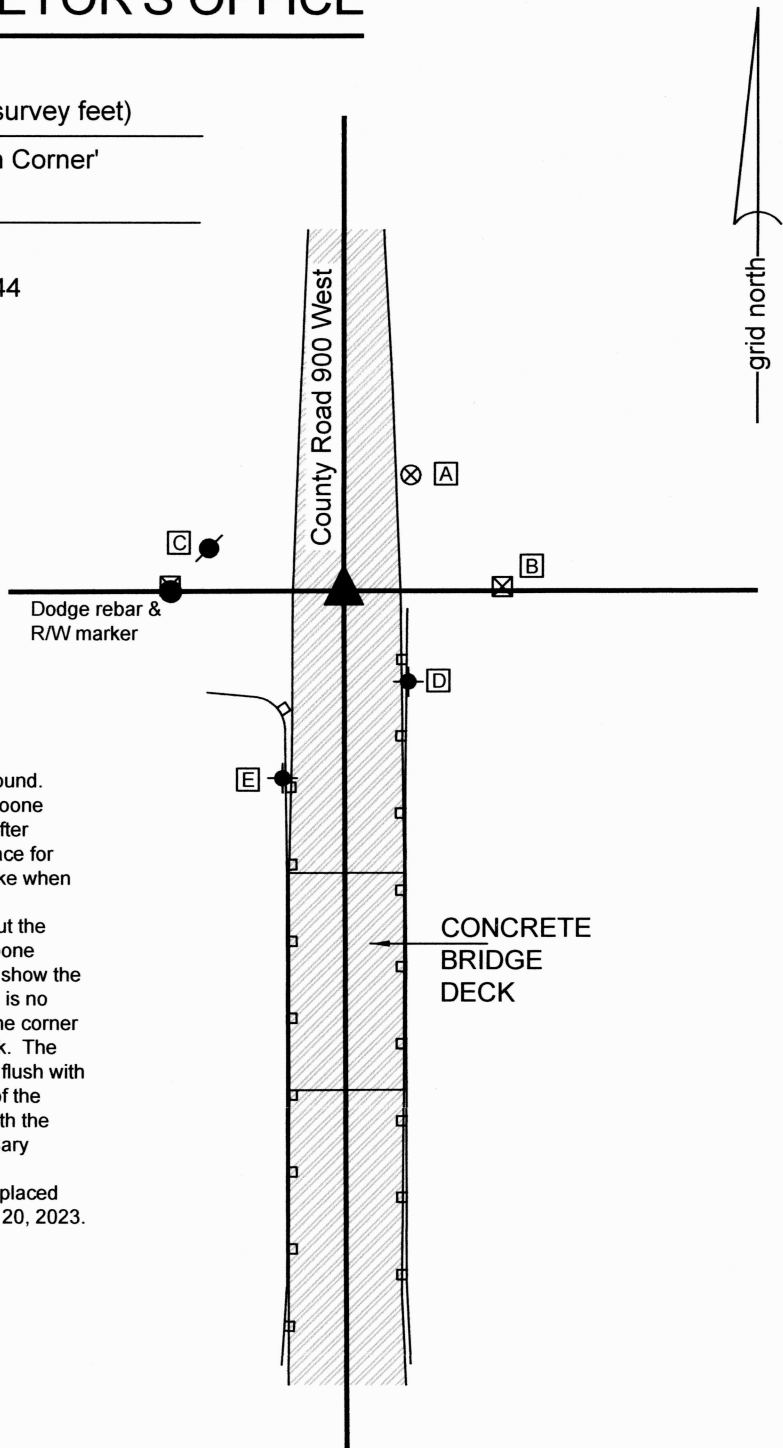
CORNER WITNESS DETAIL

SCALE 1" = 50'



- A - Boone County witness mark, flush, 34.7'
- B - N.E. corner, R/W marker, flush, 41.2'
- C - Mag nail set in E. side power pole, 4' a.g., 36.7'
- D - Notch carved in center top of guard rail post, 29.0'
- E - Notch carved in center top of guard rail post, 51.3'

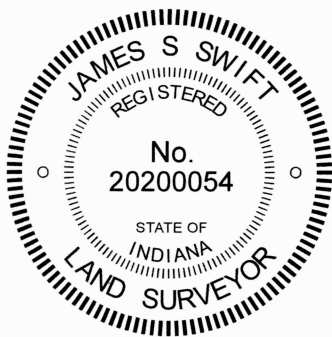
- guard rail



The Harrison monument was set in place of a railroad spike found. A BCS Record of February 22-23, 1875 by David M. Burns, Boone County Surveyor, states, with respect to this corner, "Reest. after running lines and correcting lines that terminate in it and in place for "Rock" found a rock that parties had placed where I drove stake when surveying road."

No recent BCS tie cards were found referencing the corner, but the corner is shown on the plans for the bridge at this location, Boone County Bridge 144, plans certified May 5, 1999. These plans show the corner as a railroad spike at station 15+07.34, Line "A". There is no chance of finding the rock referenced in the 1875 record, as the corner falls in the elevated approach to the relatively new bridge deck. The railroad spike referenced on the 1999 bridge plans was found flush with the asphalt road surface. This monument falls slightly south of the existing fences to the east and west, which is in agreement with the bridge plans, and falls in line with a rebar bearing the cap of Cary Dodge, LS No. SO288, found 45 feet west of the corner.

The railroad spike was held as marking the corner and was replaced with a Harrison Monument in the same position on November 20, 2023.



Carol Cunningham
Carol Cunningham, County Surveyor

James S. Swift
James S. Swift, IN LS 20200054
November 28, 2023

Jackson Township

Section 28 T18N, R2W	Section 27 T18N, R2W
-------------------------	-------------------------

SECTION CORNER RECORD

SW 500-800

BOONE COUNTY SURVEYOR'S OFFICE

State Plane grid coordinates NAD83 (2011):

North: 1718903.37 East: 3082689.90 (U.S. survey feet)

Type of monument: INDOT Type B Monument

Depth: Flush with adjacent road surface

Indiana tie card references:

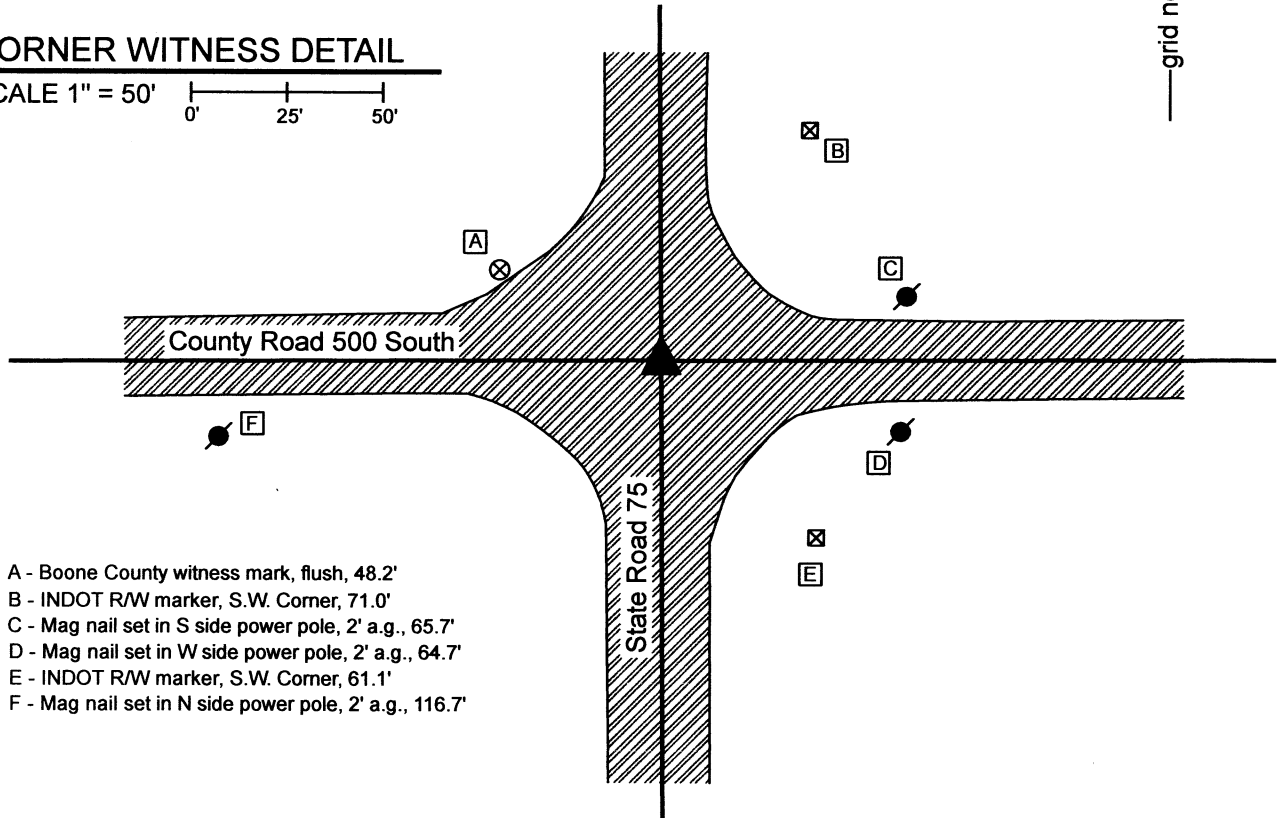
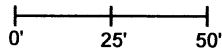
IN02_T18NR2W27_72 IN02_T18NR2W26_80

IN02_T18NR2W34_08 IN02_T18NR2W35_00



CORNER WITNESS DETAIL

SCALE 1" = 50'

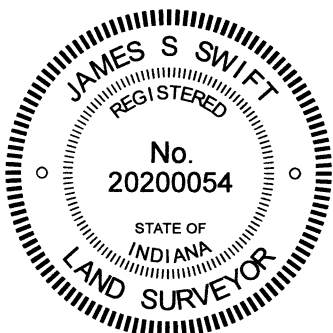


- A - Boone County witness mark, flush, 48.2'
- B - INDOT R/W marker, S.W. Corner, 71.0'
- C - Mag nail set in S side power pole, 2' a.g., 65.7'
- D - Mag nail set in W side power pole, 2' a.g., 64.7'
- E - INDOT R/W marker, S.W. Corner, 61.1'
- F - Mag nail set in N side power pole, 2' a.g., 116.7'

The INDOT Type B monument was found in place.

A BCS tie card dated December, 2003 shows the corner to be a PK nail. In 2004 or later, INDOT replaced the nail with a Type B monument in the same position. Though the origin of the position of the monument is not known, it fits with local evidence in the form of the intersection of the existing roadways. This corner was not excavated, being in a state highway. The Type B monument is held as marking the corner.

This corner was originally established as a wood post in 1820.



Carol Cunningham
Carol Cunningham, County Surveyor

James S. Swift
James S. Swift, IN LS 20200054

May 31, 2023

Jackson Township

Section 27 T18N, R2W	Section 26 T18N, R12W
Section 34 T18N, R2W	Section 35 T18N, R2W

SECTION CORNER RECORD

SW 500-850

BOONE COUNTY SURVEYOR'S OFFICE

State Plane grid coordinates NAD83 (2011):

North: 1718893.15 East: 3080021.63 (U.S. survey feet)

Type of monument: Harrison, 4" disk 'Section Corner'

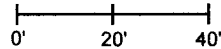
Depth: One inch below adjacent road surface

Indiana tie card references:

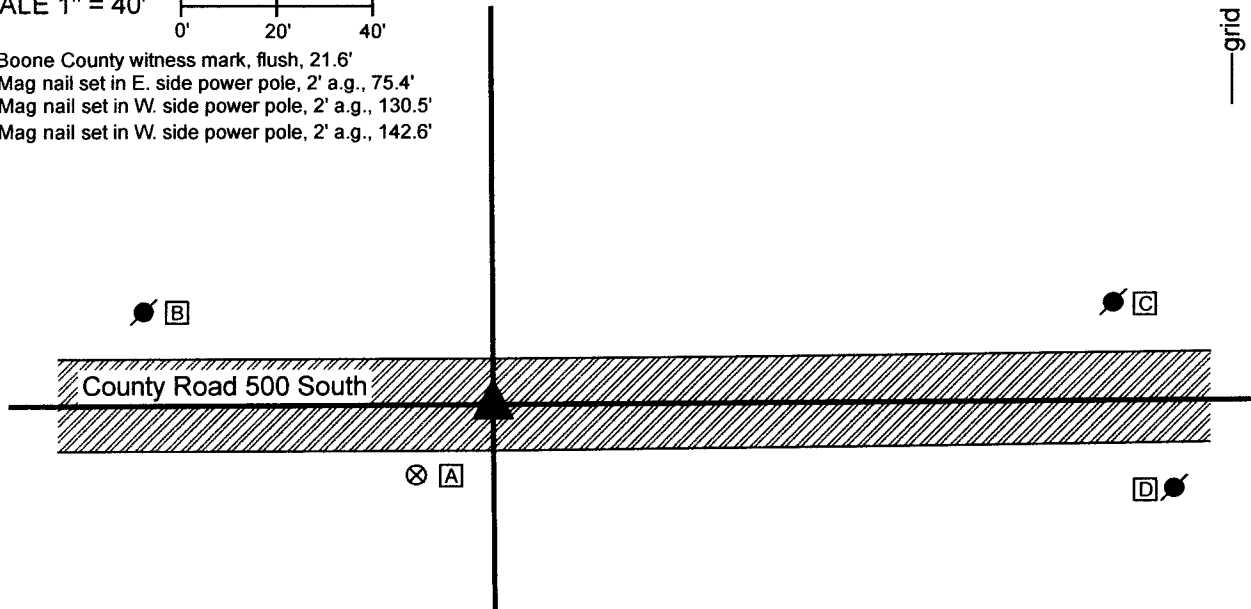
IN02_T18NR2W27_76 IN02_T18NR2W34_04

CORNER WITNESS DETAIL

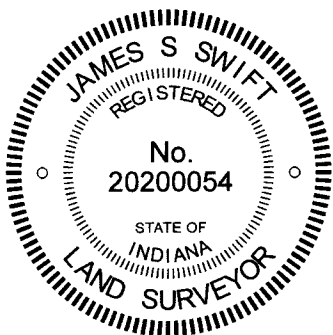
SCALE 1" = 40'



- A - Boone County witness mark, flush, 21.6'
- B - Mag nail set in E. side power pole, 2' a.g., 75.4'
- C - Mag nail set in W. side power pole, 2' a.g., 130.5'
- D - Mag nail set in W. side power pole, 2' a.g., 142.6'



The Harrison monument was set over a stone found. A BCS record of November 13, 1893 states, with respect to this corner, "Reest. by measure. Set Rock + 27.17.12 at corner." No recent BCS tie cards were found referencing this corner. Excavation was performed at this corner on August 10, 2022. Prior to excavation, a railroad spike was found at 7 inches below grade. Excavation revealed a stone found at 12 inches deep, south and west of the spike. The top of the stone measured 12 inches N-S by 10 inches E-W. The stone was determined to be at least 22 inches tall (by measuring along the southeast edge) and 14 inches wide, E-W. The full 27.17.12 dimension was not fully confirmed, though the stone clearly approximated those dimensions. The stone was embedded in the clay layer below the road, protruding approximately 3 inches into the bottom of the road bed, and was oriented in cardinal directions. No specific marks were found. It is noted that the north edge of the top of the stone appears to have been broken off, presumably from road grading equipment, potentially destroying any mark which would have been at that point on the stone. It is noted that the reference in the 1893 record to "Reest. by measure" appears to indicate, based on supporting measurements included in the sidebar of that entry, that the corner was established at the midpoint of the line connecting the southeast and southwest corners of Section 27. The body of the found stone actually occupies the midpoint of the line connecting the section corners to the east and west (see BCS Corners SW 500-800 and SW 500-900). The top, midpoint of the stone was held as the specific position of the corner, which point falls slightly south of the straight line connecting the section corners to the east and west. A Harrison monument was set over that point. The railroad spike, removed during excavation, had been 2.0 feet north and 0.7 foot east of the position held as the corner. This corner was originally established as a wood post in 1820.



Kenneth E. Hedge
Kenneth E. Hedge, County Surveyor

James S. Swift
James S. Swift, IN LS 20200054
August 16, 2022

Jackson Township

Section 27
T18N, R2W

Section 34
T18N, R2W