

# SECTION CORNER RECORD

SW 400-200

## BOONE COUNTY SURVEYOR'S OFFICE

State Plane grid coordinates NAD83 (2011):

North: 1724281.48 East: 3114332.97 (U.S. survey feet)

Type of monument: Harrison, 4" disk 'Section Corner'

Depth: Six inches below adjacent road surface

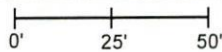
Indiana tie card references:

IN02\_T18NR1W23\_72 IN02\_T18NR1W22\_80

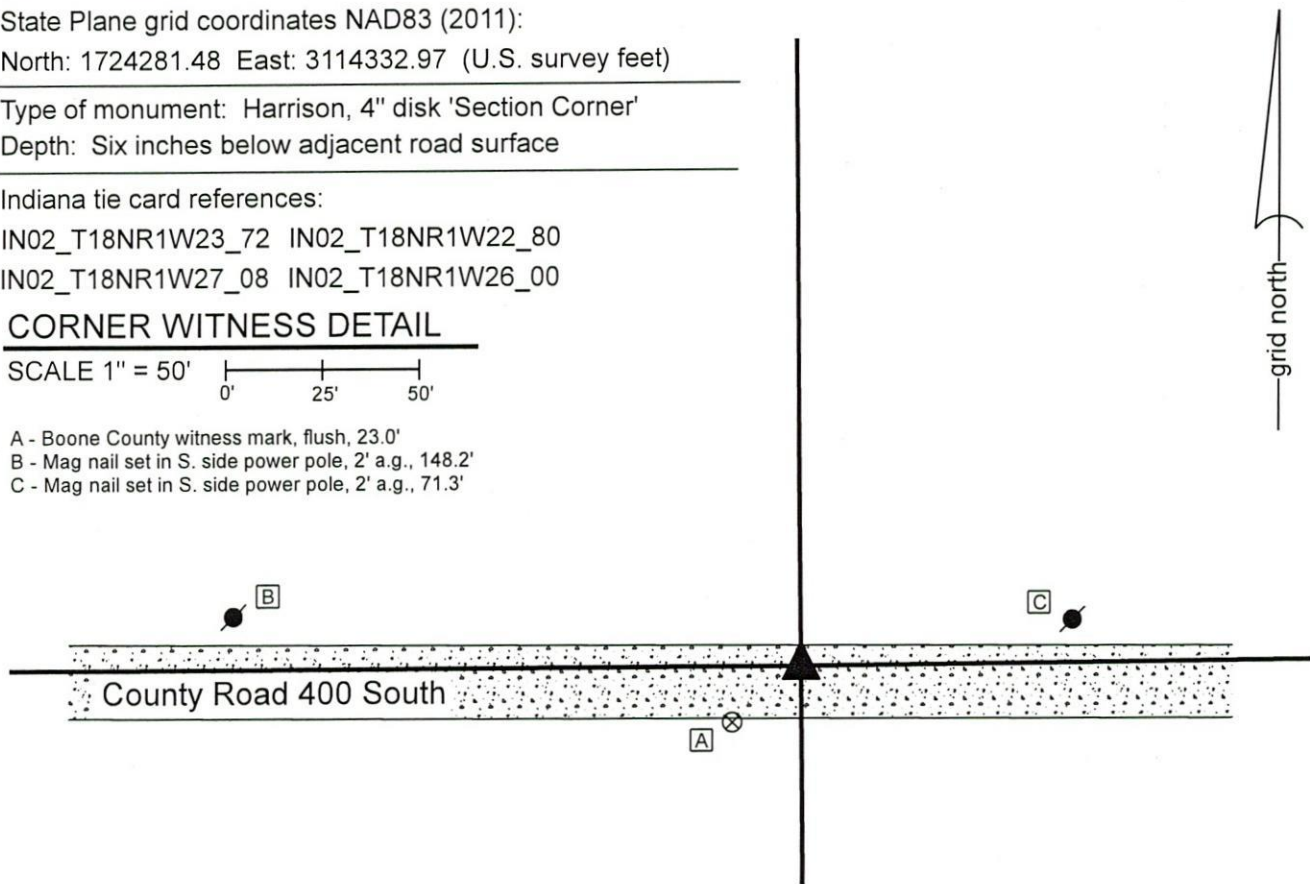
IN02\_T18NR1W27\_08 IN02\_T18NR1W26\_00

### CORNER WITNESS DETAIL

SCALE 1" = 50'



- A - Boone County witness mark, flush, 23.0'
- B - Mag nail set in S. side power pole, 2' a.g., 148.2'
- C - Mag nail set in S. side power pole, 2' a.g., 71.3'

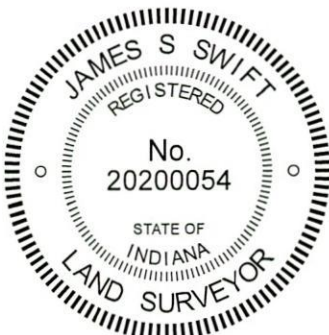


The Harrison monument was set over a stone found.

A BCS record dated March 27 & 31, 1893 states, with respect to this corner, "Set Rock + 12.6.6 at corner. Set Rock no mark 8.8.6 under." No recent BCS tie cards were found referencing this corner.

Excavation was performed at this corner on January 13, 2020. Prior to excavation, a 5/8 inch rebar was found at the surface of the gravel road, bent at the top. Excavation revealed two stones found slightly northwest of the rebar. The record top stone was found at 3 inches deep. This stone was 12 inches tall by 8 inches E-W by 6 inches N-S, matching two of the dimensions called in the 1893 record and 2 inches different than the third dimension. A vague etched "+" mark was visible on the south side of the stone, near the top. The stone was removed from the road and another stone was found directly below, at 18 inches deep. The top of this stone was measured to be 9 inches N-S by 8 1/2 inches E-W with 3 inches of the top exposed. The full height of the stone was not measured though it appeared to be horizontal and not much taller than that which was exposed. No mark was observed on the top of the stone. The dimensions of both stones were close to but not precisely matching the 1893 descriptions. The stones were accepted as being the same monuments set in 1893 and were held as marking the corner. The lower stone was left in place and a Harrison monument was set over the lower stone in the same horizontal position as the distinct high point of the upper stone, as originally found.

The vertical shaft of the disturbed rebar, removed during excavation, had been 2.4 feet east and 0.5 foot south of the top, high point of the upper stone. This corner was originally established as a wood post in 1820.



*Kenneth E. Hedge*  
Kenneth E. Hedge, County Surveyor

*James S. Swift*  
James S. Swift, IN LS 20200054  
January 22, 2020

Harrison Township

Section 22 T18N, R1W	Section 23 T18N, R1W
Section 27 T18N, R1W	Section 26 T18N, R1W

# SECTION CORNER RECORD

SW 400-250

## BOONE COUNTY SURVEYOR'S OFFICE

State Plane grid coordinates NAD83 (2011):

North: 1724275.02 East: 3111659.51 (U.S. survey feet)

Type of monument: Harrison, 4" disk 'Section Corner'

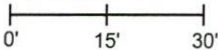
Depth: Six inches below adjacent gravel road surface

Indiana tie card references:

IN02\_T18NR1W22\_76 IN02\_T18NR1W27\_04

### CORNER WITNESS DETAIL

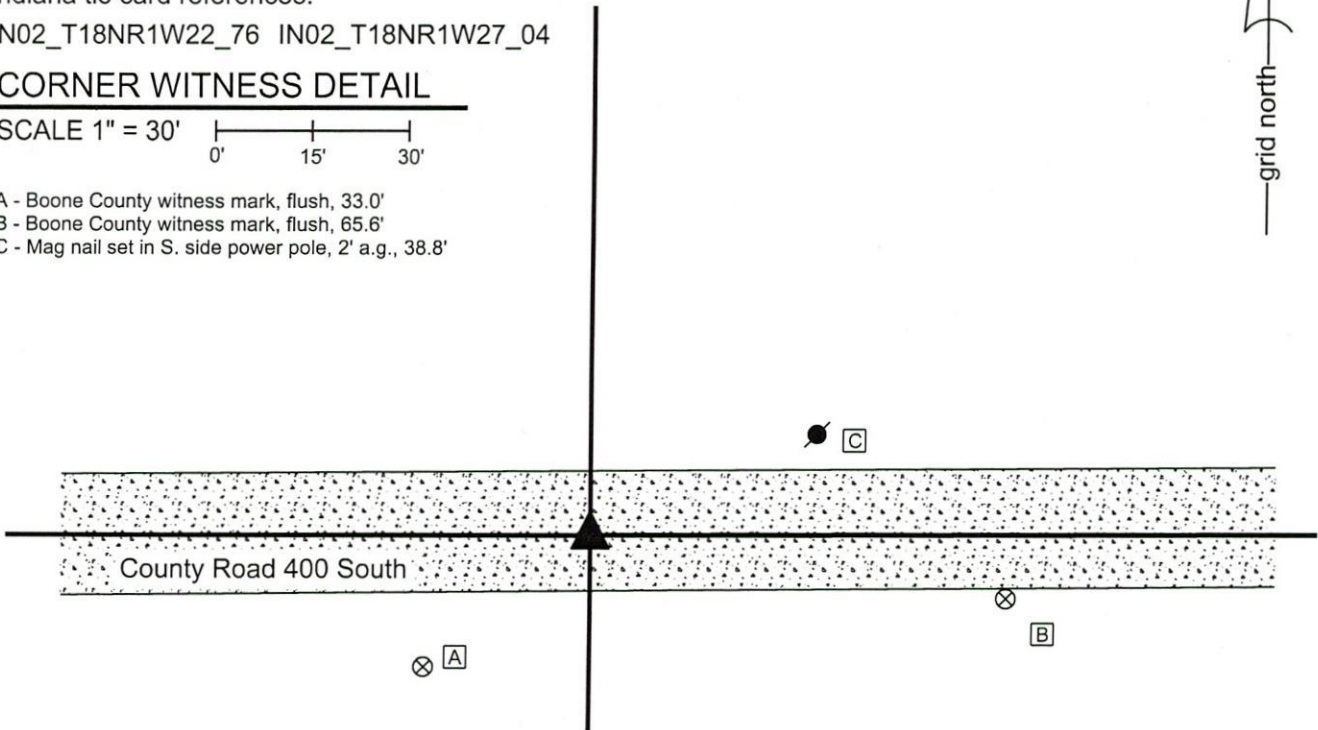
SCALE 1" = 30'



A - Boone County witness mark, flush, 33.0'

B - Boone County witness mark, flush, 65.6'

C - Mag nail set in S. side power pole, 2' a.g., 38.8'

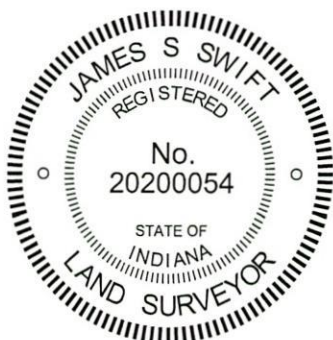


The Harrison monument was set in place of horizontal piece of wood stake found.

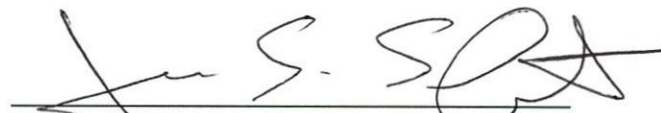
A BCS record dated March 27 & 31, 1893 states, with respect to this corner, "reest. at intersection of Straight East-West line with line 3-4 from the South. Set Rock, no mk 15,8,6 at cor." No recent BCS tie cards were found referencing this corner.

Excavation was performed at this corner on January 13, 2020. Prior to excavation, a section of 1/2 inch diameter rebar was found at the surface of the road, bent at the top and slightly disturbed. Excavation revealed a horizontal wood stake or post at 18 inches deep, slightly west of the rebar. The piece of wood was 2 inches thick (vertical) by 4 inches E-W by 44 inches N-S, oriented north-south, perpendicular to the east-west road and section lines. Though 2 inches by 4 inches, this piece was not a modern piece of 2x4 lumber, being rough cut and of oak material. The origin of the piece of wood is not known but it was observed to be similar in dimension, character and orientation to a similar piece of wood found at BCS corner NW-900-000, the records for which referred to the monument as a 'crosslaying.' Excavation of an area 2 feet south, 3 feet north, 3 feet east and 3 feet west of the rebar did not reveal further evidence of the corner. It is noted that the road bed in the immediate vicinity of the rebar appeared to have been previously disturbed. If the rebar replaced the stone called in the 1893 record, no documentation was found to indicate that that had happened. The rebar and wood stake both fit well with the relative position of a stone found at the corner 1/2 mile east (see BCS corner SW 400-200) and the dimensions recited in the 1893 record, as adjusted by a standard index factor of 1.00415 applied to dimensions for records between 1860 and 1895. The wood stake, being the most ancient evidence and appearing so similar in character to the aforementioned 'crosslaying' was accepted as the best available evidence of the corner. A Harrison monument was set in place of the center of the stake. The rebar, removed during excavation, had been 0.3 foot north and 1.4 foot east of the position held as the corner.

This corner was originally established as a wood post in 1821.



  
Kenneth E. Hedge, County Surveyor

  
James S. Swift, IN LS 20200054  
February 19, 2020

Harrison  
Township

Section 22  
T18N, R1W

Section 27  
T18N, R1W

# SECTION CORNER RECORD

SW 500-200

## BOONE COUNTY SURVEYOR'S OFFICE

State Plane grid coordinates NAD83 (2011):  
North: 1719012.77 East: 3114389.63 (U.S. survey feet)

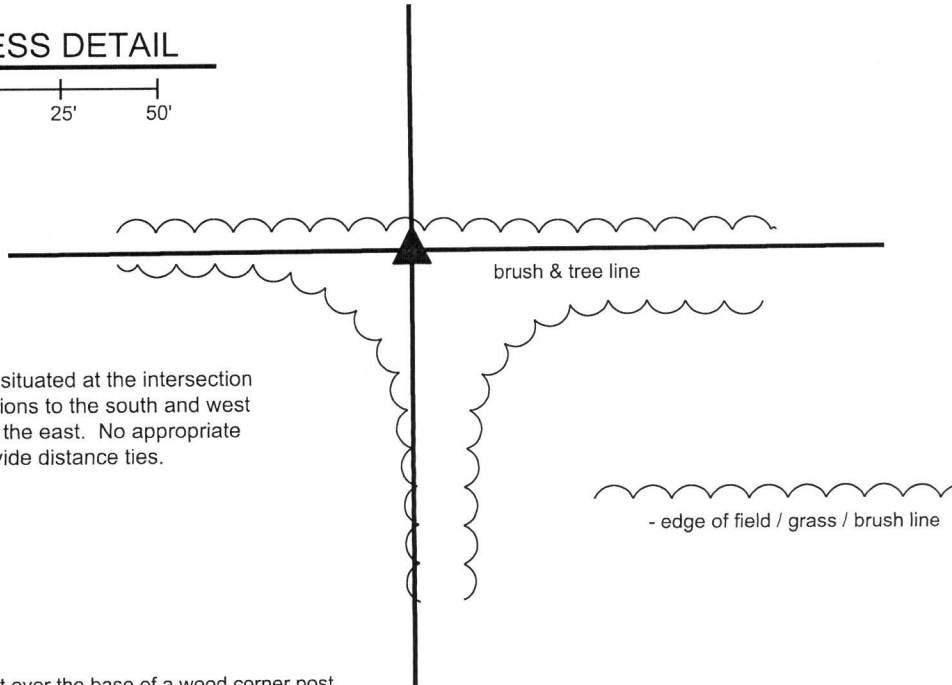
Type of monument: Harrison, 4" disk 'Section Corner'  
Depth: Four inches above adjacent ground

Indiana tie card references:  
IN02\_T18NR1W27\_80 IN02\_T18NR1W26\_72  
IN02\_T18NR1W34\_08 IN02\_T18NR1W35\_00



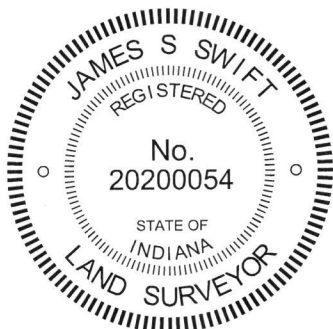
### CORNER WITNESS DETAIL

SCALE 1" = 50' 0' 25' 50'



The Harrison monument is situated at the intersection of brush lines and field divisions to the south and west and a brush and tree line to the east. No appropriate objects are available to provide distance ties.

The Harrison monument was set over the base of a wood corner post. No specific descriptions of this corner were found in the BCS Surveyor's Record beyond the original establishment of the corner as a wood post in 1820. The corner is referenced as the terminal point for measurements in an entry of April 20, 1874. No recent BCS tie cards were found referencing the corner. A survey for INDOT by Frank T. Luse, LS #20000223, recorded in Survey 15, pages 52-53 in the Office of the Boone County Recorder, shows the corner as "post base." No other recorded surveys were found which reference the corner. This corner was excavated on April 2, 2019. Prior to excavation, in April 2016, a wood corner post had been observed at the corner, fallen on the ground. On April 2, 2019, the post was found yet lying on the ground amidst a variety of rocks and rubble, in-line with field divisions to the east and west and at the west edge of a wide, humped field division to the south. The position of the post, as it had stood prior to falling over, was confirmed by physically standing up the post which was yet attached to wires to the east and west. This position was found to agree well with the 2016 observation and the position shown on the Luse survey. Excavation in the vicinity of the post revealed numerous rocks, none of which could be confirmed as being a purposely set corner stone. The base of the post was found at 18 inches deep. It is noted that the position of the post is slightly west of what appears to be an old fence hump to the south, but the post itself had not only fencing attached to the east and west but evidence fencing cut-off to the north and south. No evidence of another post was found in line with the hump to the south. The position of the post works well with the measurement references from 1874 and the relative positions of a stone at the corner 1/2 mile west (see BCS corner SW-500-250) and a wood corner post found providing evidence of the quarter-quarter corner between said stone and the subject corner. The post was accepted as the best available evidence of the corner. The fencing was cut from the post and the top section of the post was placed nearby, amidst the various rubble. A Harrison monument was set directly over the base of the post on April 17, 2019.



*Kenneth E. Hedge*  
Kenneth E. Hedge, County Surveyor

*James S. Swift*  
James S. Swift, IN LS 20200054  
May 8, 2019

Harrison Township

Section 27 T18N, R1W	Section 26 T18N, R1W
Section 34 T18N, R1W	Section 35 T18N, R1W

# SECTION CORNER RECORD

SW 500-250

## BOONE COUNTY SURVEYOR'S OFFICE

State Plane grid coordinates NAD83 (2011):

North: 1718996.24 East: 3111711.38 (U.S. survey feet)

Type of monument: 5/8 inch rebar with metal cap stamped 'Boone County Surveyor'

Depth: 2 inches above adjacent grade

Indiana tie card references:

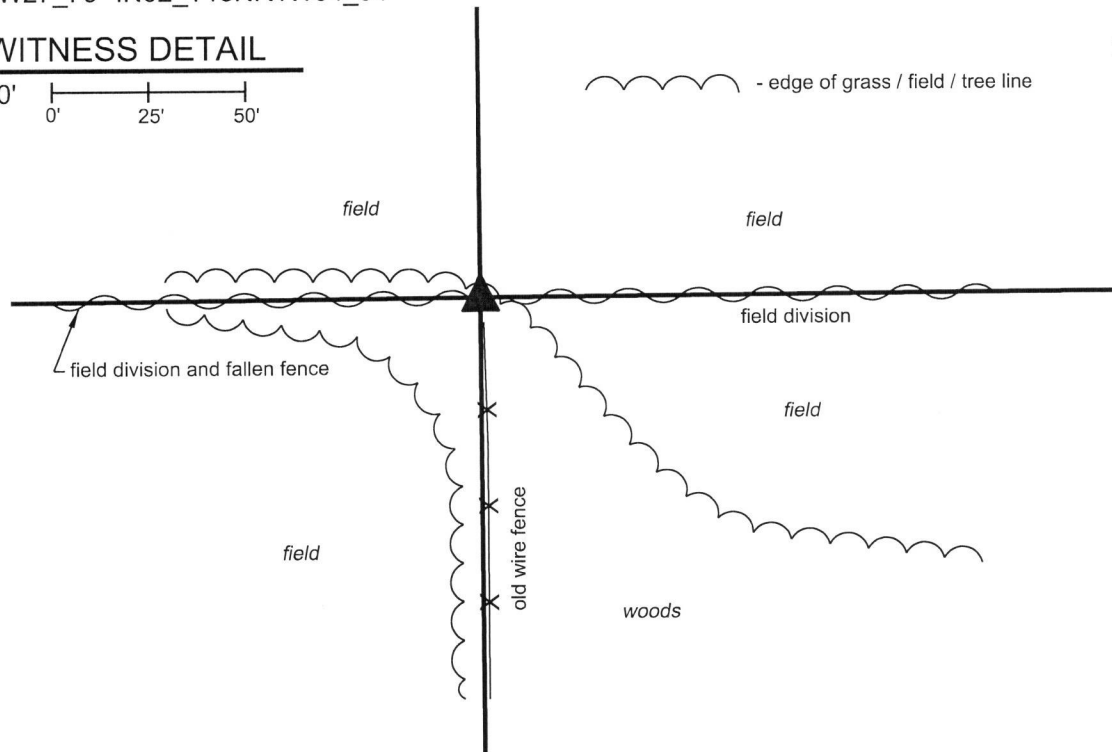
IN02\_T18NR1W27\_76 IN02\_T18NR1W34\_04

### CORNER WITNESS DETAIL

SCALE 1" = 50'

0' 25' 50'

- edge of grass / field / tree line

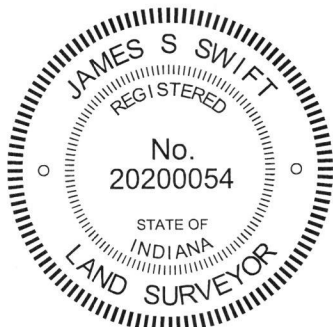


The rebar was set directly above a stone found.

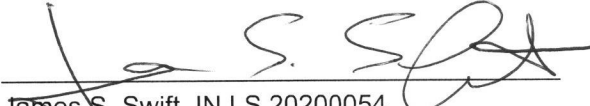
A BCS record dated April 20, 1874 states, with respect to this corner, "Reestablished from N. tree after tracing the lines meeting here to prove that it was the tree (as the tree had been boxed before.) Set Rock 17,13, 9+." A subsequent record dated May 4, 1881 states "Rock established from North tree as above. Found Rock 17,13, 9." No recent BCS tie cards were found referencing the corner. A survey by Jerry L. Carter, LS #S0350, recorded as Instrument 0305086 in the Office of the Boone County Recorder shows the corner as "Accepted Headpost."

This corner was excavated on March 29, 2019. Prior to excavation, the headpost shown on the Carter survey was found at the northwest corner of a small woods, at the terminus of an old fence to the south and a fallen fence to the west and in-line with field divisions to the east and west. Excavation in the vicinity of the post revealed the stone described in the 1874 and 1881 records at 18 inches deep, adjacent to the west edge of the post. The stone has a clear and distinct etched "+" mark on the top, center. The post is leaning in such a manner that it was not possible to establish a Harrison monument in a stable manner over the top of the stone. However, a smaller monument could be set directly over the mark on the stone. On April 17, 2019, the stone was uncovered again. The top several inches of the stone were encased in concrete amidst a large base of concrete integrated with 2-foot lengths of 1/2 inch rebar driven around the stone. A 4 inch diameter section of PVC pipe was set directly above the stone, attached to the concrete base with 2-foot lengths of 3/8 inch diameter rebar. The PVC pipe was filled with concrete and a 12 inch long section of 5/8 inch rebar was set vertically in the concrete, directly above the etched "+" mark on the stone. A metal cap stamped Boone County Surveyor was placed on the rebar. The capped rebar is directly above the mark on the stone and appears, at ground level, to be at the northwest edge of the post.

This corner was originally established as a wood post in 1820.



  
Kenneth E. Hedge, County Surveyor

  
James S. Swift, IN LS 20200054  
May 8, 2019

Harrison Township

Section 27  
T18N, R1W

Section 34  
T18N, R1W

# SECTION CORNER RECORD

# SW 500-300

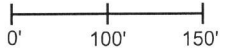
## BOONE COUNTY SURVEYOR'S OFFICE

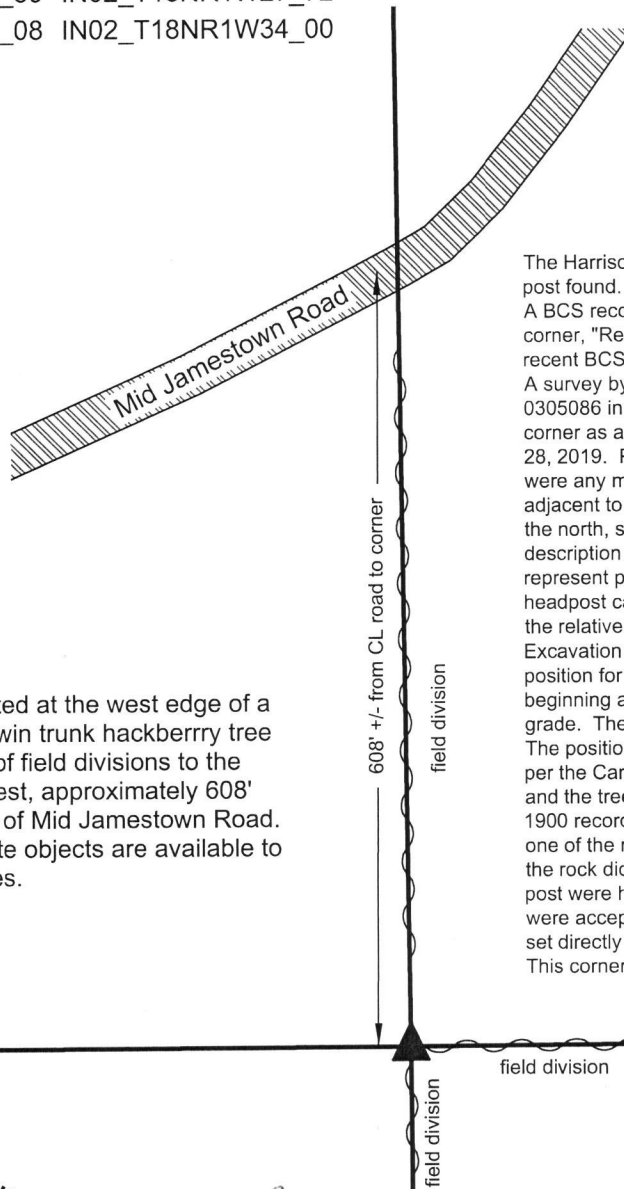
State Plane grid coordinates NAD83 (2011):  
North: 1718978.20 East: 3109053.71 (U.S. survey feet)

Type of monument: Harrison, 4" disk 'Section Corner'  
Depth: 5 inches above adjacent ground

Indiana tie card references:  
IN02\_T18NR1W28\_80 IN02\_T18NR1W27\_72  
IN02\_T18NR1W33\_08 IN02\_T18NR1W34\_00

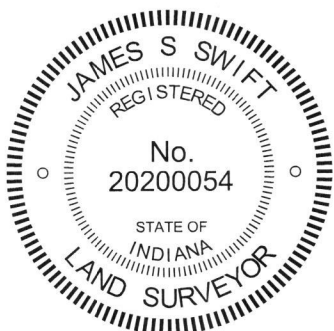
### CORNER WITNESS DETAIL

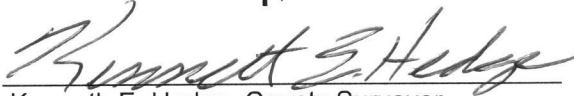
SCALE 1" = 150' 




The corner is situated at the west edge of a 20 inch diameter, twin trunk hackberry tree at the intersection of field divisions to the north, south and west, approximately 608' south of the center of Mid Jamestown Road. No other appropriate objects are available to provide distance ties.

The Harrison monument was set over remnants of a wood corner post found.  
A BCS record of October 11, 1900 states, with respect to this corner, "Reestab. Set Rock 15,17 +. Small rock beneath." No recent BCS tie cards were found referencing this corner.  
A survey by Jerry L. Carter, LS #S0359 recorded as Instrument 0305086 in the Office of the Boone County Recorder shows the corner as a "HEADPOST". This corner was excavated on March 28, 2019. Prior to excavation, the headpost was not visible, nor were any metal monuments. Two rocks were visible on the ground adjacent to a hackberry tree at the intersection of field divisions to the north, south and east. Neither of the rocks matched the description called in the 1900 record nor did they appear to represent purposely set corner stones. The position of the headpost called in the Carter survey was computed with respect to the relative positions of other monuments shown on that survey. Excavation in the vicinity of the hackberry tree and the computed position for the headpost revealed remnants of a wood post found beginning at 12 inches deep and exposed up to 20 inches below grade. The post is adjacent to the west edge of the hackberry tree. The position of the post precisely matched the computed position per the Carter survey. A small rock was found between the post and the tree but the rock did not match the dimensions called in the 1900 record. It was observed that the rock appeared to be part of one of the rocks found above ground. Combined, the two pieces of the rock did not match the 1900 description. The fragments of the post were held as the best available evidence of the corner and were accepted as marking the corner. A Harrison monument was set directly over the found base of the post.  
This corner was originally established as a wood post in 1820.



  
Kenneth E. Hedge, County Surveyor

  
James S. Swift, IN LS 20200054  
May 8, 2019

Jackson Township

Section 28 T18N, R1W	Section 27 T18N, R1W
Section 33 T18N, R1W	Section 34 T18N, R1W