

# SECTION CORNER RECORD

NW 100-100

## BOONE COUNTY SURVEYOR'S OFFICE

State Plane grid coordinates NAD83 (2011):

North: 1750877.41 East: 3119511.14 (U.S. survey feet)

Type of monument: Harrison, 4" disk 'Section Corner'

Depth: Flush with adjacent road surface

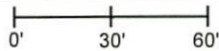
Indiana tie card references:

IN02\_T19NR1W25\_80 IN02\_T19NR1W26\_72

IN02\_T19NR1W35\_08 IN02\_T19NR1W36\_00

### CORNER WITNESS DETAIL

SCALE 1" = 60'



A - Mag nail in E side PWP, 2' a.g., 101.6'

B - Mag nail in S side PWP, 2' a.g., 53.1'

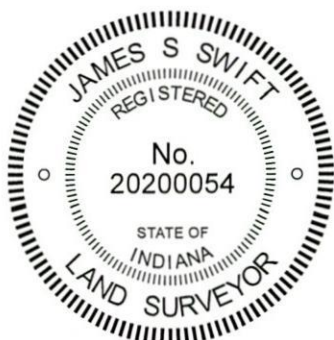
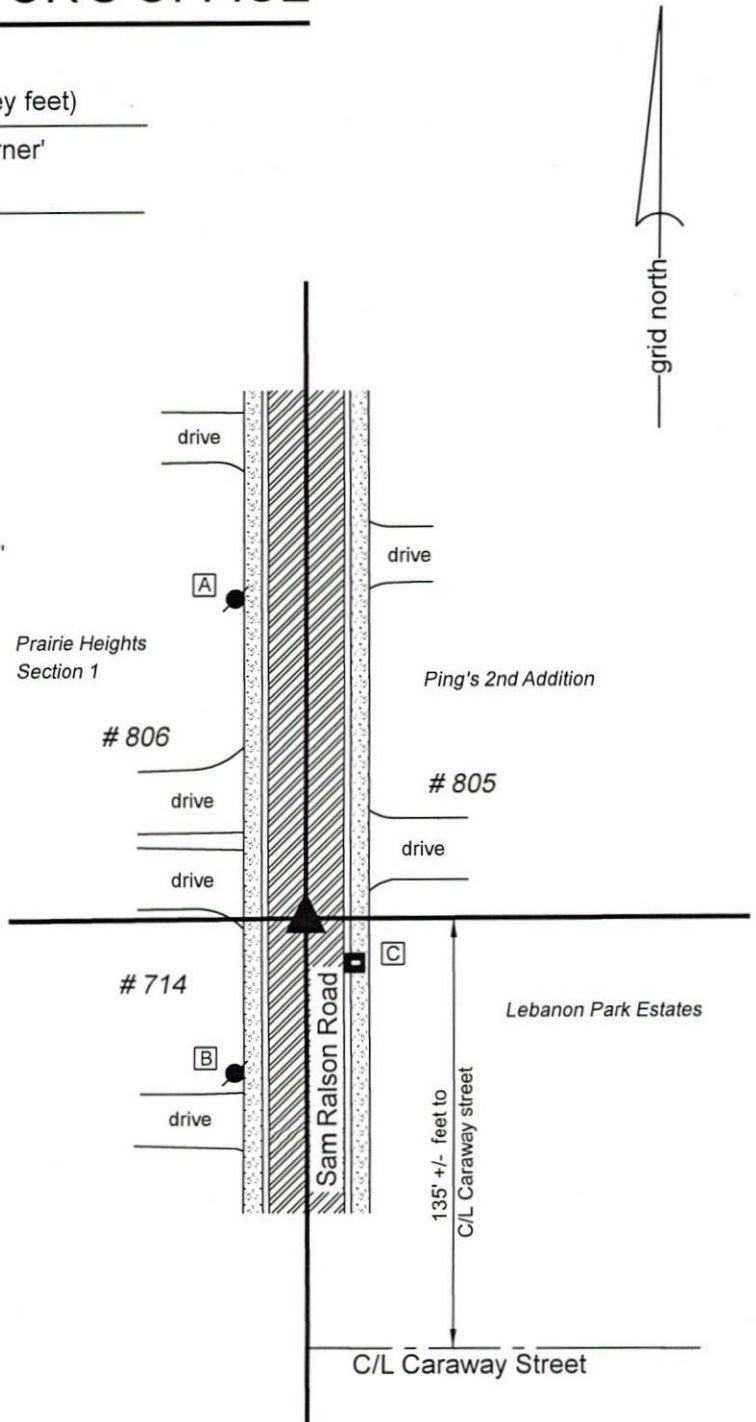
C - Notch in NW edge of post, Mailbox 714 Sam Ralston Rd., 20.7'

The Harrison Monument was found in place. A BCS record dated June 27, 1872 states, with respect to this corner, "Set Reest'd from trees. Oak lately cut down. Is 18 links to Elm. Set rock 31x13x8 +." A BCS tie card dated January 18, 1994 shows the corner as a railroad rail with rebar.

No excavation was performed at this corner. A Harrison monument was found. It is believed that this monument is situated over or in place of the railroad rail referenced in the 1994 tie card. Both the Harrison monument and railroad rail were most likely set in cooperation with the Boone County Surveyor's Office but documentation for that was not found. The Harrison monument has been in place since at least 2006. It is believed that the position of the Harrison monument or railroad rail has been held for numerous surveys for many years and that the adjoining subdivisions and properties are tied to this corner position. (See Prairie Heights, Section 1, Ping's 2nd Addition and various plats for Lebanon Park Estates) The position of the monument works well with local evidence in the form of the center of the road and works well with the relative positions of the corners approximately 1/2 and 1 mile west, respectively (see Boone County Corners NW 100-150 and NW 100-200.)

The Harrison monument was held as marking the corner and was left in place, undisturbed.

This corner was originally established as a wood post in 1822.



*Kenneth E. Hedge*  
 Kenneth E. Hedge, County Surveyor

*James S. Swift*  
 James S. Swift, IN LS 20200054  
 February 5, 2020

Center Township

Section 26 T19N, R1W	Section 25 T19N, R1W
Section 35 T19N, R1W	Section 36 T19N, R1W

# SECTION CORNER RECORD

NW 100-150

## BOONE COUNTY SURVEYOR'S OFFICE

State Plane grid coordinates NAD83 (2011):

North: 1750855.90 East: 3116868.82 (U.S. survey feet)

Type of monument: Harrison, 4" disk 'Section Corner'

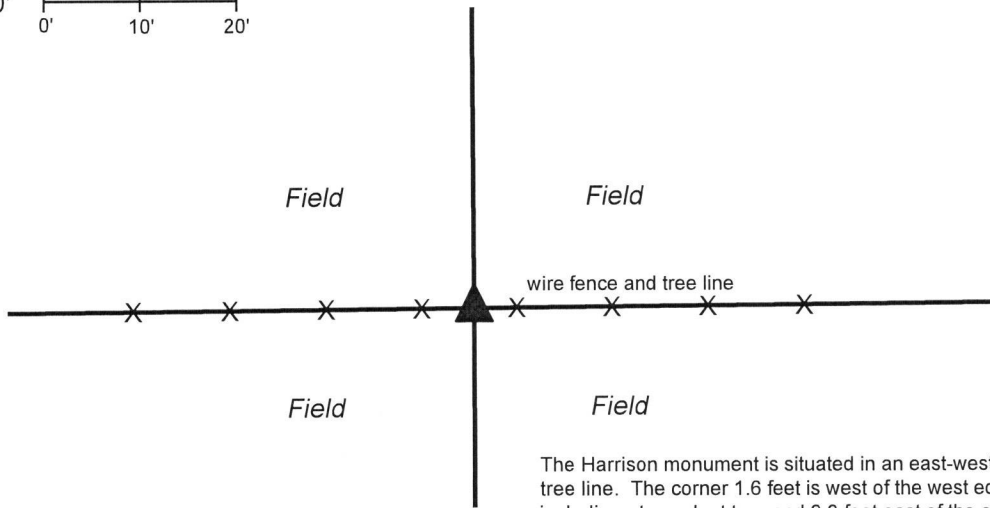
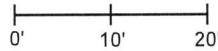
Depth: Four inches above adjacent ground.

Indiana tie card references:

IN02\_T19NR1W26\_04 IN02\_T19NR1W35\_76

### CORNER WITNESS DETAIL

SCALE 1" = 20'



The Harrison monument is situated in an east-west fence and tree line. The corner 1.6 feet is west of the west edge of a 19 inch diameter walnut tree and 9.3 feet east of the east edge of a 19 inch diameter walnut tree. The monument is witnessed by an orange fiberglass lathe labeled 'survey marker'. No other distance ties are provided.

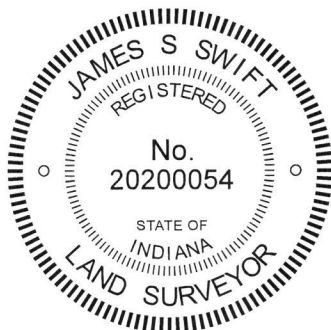
The Harrison monument was set in place of a wood corner post found.

A BCS record dated June 27, 1872 states, with respect to this corner, "Set Stake." No calls for stones were found in the BCS Surveyor's Record. No recent tie cards were found referencing the corner nor were any recorded surveys found which call out a specific location for the corner.

This corner was excavated on November 20, 2018. Prior to excavation, two wood posts, both with evidence of bracing wires, were found in an E-W fence. Both posts appeared to be ancient. Excavation in the vicinity of both posts revealed no further evidence of the corners. Analysis of the positions of the post with respect to remote evidence of other corners indicates that the easterly post is the corner. This post was found to be approximately 1.2 feet east of a theoretical midpoint between the section corners approximately 1/2 mile to the east and west (see BCS corners NW 100-100 and NW 100-200, respectively). Also, it was observed that the post is almost precisely at double the distance east from posts providing evidence of the 1/8 corner approximately 1/4 mile west (post with standing fence east and west and cut toward the north) and a post providing evidence of the 1/16 corner approximately 1/8 mile west of the subject corner (post with fence east, west and south).

The easterly of the two found posts was held as marking the corner. The post was removed and replaced with a Harrison monument in the same position.

This corner was originally established as a wood post in 1822.



*Kenneth E. Hedge*  
Kenneth E. Hedge, County Surveyor

*James S. Swift*  
James S. Swift, IN LS 20200054  
January 23, 2019

Center Township

Section 26  
T19N, R1W



Section 35  
T19N, R1W

# SECTION CORNER RECORD

NW 100-200

## BOONE COUNTY SURVEYOR'S OFFICE

State Plane grid coordinates NAD83 (2011):

North: 1750834.15 East: 3114224.09 (U.S. survey feet)

Type of monument: 5/8" rebar with metal cap stamped 'Boone County Surveyor'

Depth: 14 inches below adjacent ground

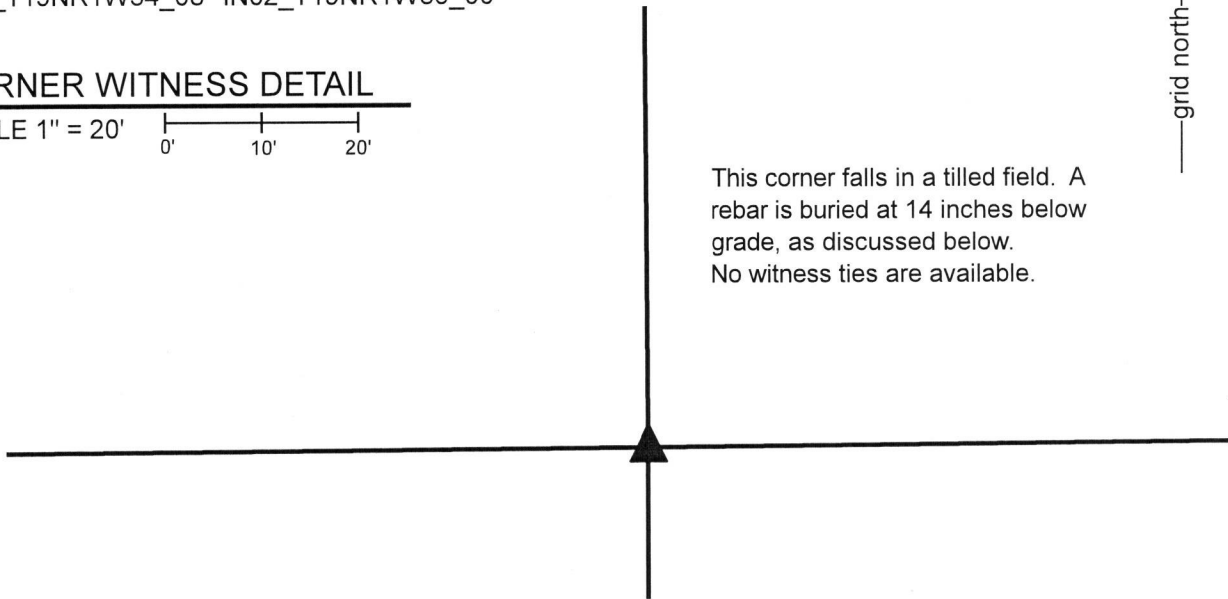
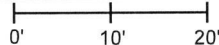
Indiana tie card references:

IN02\_T19NR1W27\_80 IN02\_T19NR1W26\_72

IN02\_T19NR1W34\_08 IN02\_T19NR1W35\_00

### CORNER WITNESS DETAIL

SCALE 1" = 20'



This corner falls in a tilled field. A rebar is buried at 14 inches below grade, as discussed below. No witness ties are available.

This corner is monumented by a 30 inch length of 5/8 inch rebar, set vertically and buried 14 inches below grade. The rebar has a metal cap stamped 'Boone County Surveyor' affixed to the top. A Harrison monument which was set at this corner in 2017 was destroyed during a fence removal project in the Spring of 2019. The rebar was set on September 25, 2019 in the same horizontal position as Harrison monument occupied previously.

The following narrative is verbatim per the original version of this document, dated January 10, 2018:

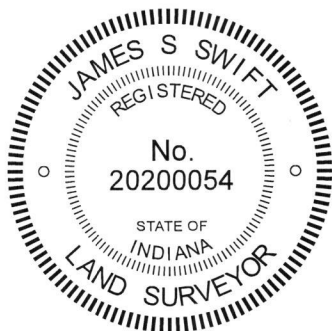
The Harrison monument was set in the position of an ancient wood corner post.

A BCS record of October 4, 1884 states, with respect to this corner, "Reestablished from stumps of both trees. Set Rock 29-16-9." A BCS record of March 11, 1895 states "see C Section 34, marked + the rock." The latter entry refers to the former.

No recent BCS tie cards were found referencing the corner.

This corner was excavated on November 9, 2017. The approximate position of the corner was computed with respect to the relative positions of evidence of the corners 1/2 and 1/4 mile west, respectively. An established east-west occupation line is visible in the form of an ancient fence which is generally not standing, being almost entirely on the ground, and the associated mound of dirt along the fence. Within a few feet of the computed position of the corner, an ancient wood corner post was found lying on the ground with various fencing attached. Substantial manual excavation around the post revealed several rocks and bricks, none of which were found to match the dimensions of the rock called for in the 1884 record. The position of the post was readily evident from its position on the ground, but fragments of the base of the post were minimal, as it appears that the post was of a type of wood prone to rotting underground. However, fragments of wire were found below the ground and the exact position of the corner was established at the point where fragments of underground wire were found extending in all four cardinal directions. A Harrison monument was set at this position.

This corner was originally established as a wood post in 1822.



*Kenneth E. Hedge*  
Kenneth E. Hedge, County Surveyor

*James S. Swift*  
James S. Swift, IN LS 20200054

January 10, 2018, updated December 3, 2019

Center Township

Section 27 T19N, R1W	Section 26 T19N, R1W
Section 34 T19N, R1W	Section 35 T19N, R1W

# SECTION CORNER RECORD

# NW 150-100

## BOONE COUNTY SURVEYOR'S OFFICE

State Plane grid coordinates NAD83 (2011):

North: 1753526.74 East: 3119499.09 (U.S. survey feet)

Type of monument: Harrison, 4" disk 'Section Corner'

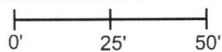
Depth: Flush with adjacent ground

Indiana tie card references:

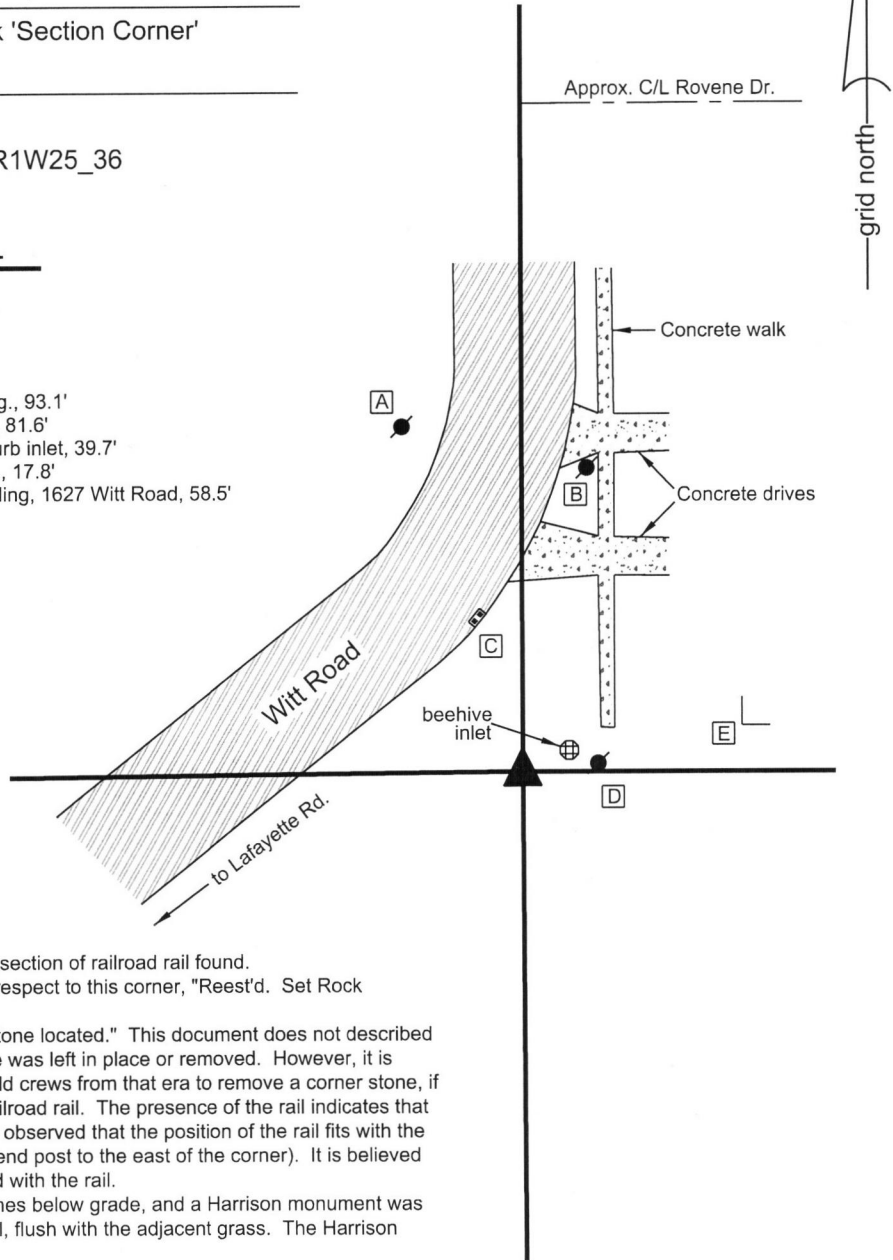
IN02\_T19NR1W26\_44 IN02\_T19NR1W25\_36

### CORNER WITNESS DETAIL

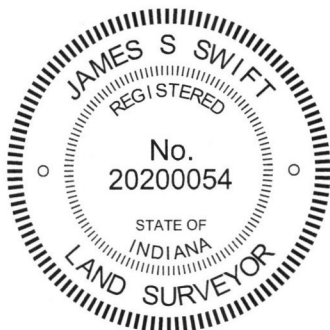
SCALE 1" = 50'



- A - Mag nail set in S.E. side power pole, 0.8' a.g., 93.1'
- B - Mag nail set in S. side power pole, 0.8' a.g., 81.6'
- C - Etched "+" in S.W. corner, top of casting, curb inlet, 39.7'
- D - Mag nail set in W. side power pole, 0.8' a.g., 17.8'
- E - S.W. corner, foundation, 1 story frame dwelling, 1627 Witt Road, 58.5'

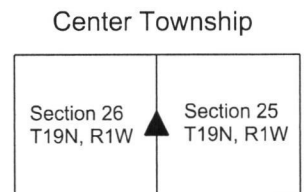


The Harrison monument was set over a vertical section of railroad rail found.  
 A BCS record dated April 29, 1875 states, with respect to this corner, "Reest'd. Set Rock 20x18x13 +."  
 A BCS tie card dated August 19, 1968 states "stone located." This document does not describe the stone nor does it describe whether the stone was left in place or removed. However, it is known that it was a common practice of BCS field crews from that era to remove a corner stone, if found, and replace it with a vertical section of railroad rail. The presence of the rail indicates that this practice was followed at this corner and it is observed that the position of the rail fits with the one remaining distance tie from the 1968 card (end post to the east of the corner). It is believed that the found stone was removed and replaced with the rail.  
 The rail was left in place, approximately five inches below grade, and a Harrison monument was broken off and set directly over the top of the rail, flush with the adjacent grass. The Harrison monument was set in October, 2015.  
 This corner was originally established as a wood post in 1822.



*Kenneth E. Hedge*  
 Kenneth E. Hedge, County Surveyor

*James S. Swift*  
 James S. Swift, IN LS 20200054  
 October 11, 2017



# SECTION CORNER RECORD

# NW 150-150

## BOONE COUNTY SURVEYOR'S OFFICE

State Plane grid coordinates NAD83 (2011):

North: 1753508.59 East: 3116851.90 (U.S. survey feet)

Type of monument: Harrison, 4" disk 'Section Corner'

Depth: Three inches above adjacent ground

Indiana tie card references:

IN02\_T19NR1W26\_40

### CORNER WITNESS DETAIL

SCALE 1" = 40'



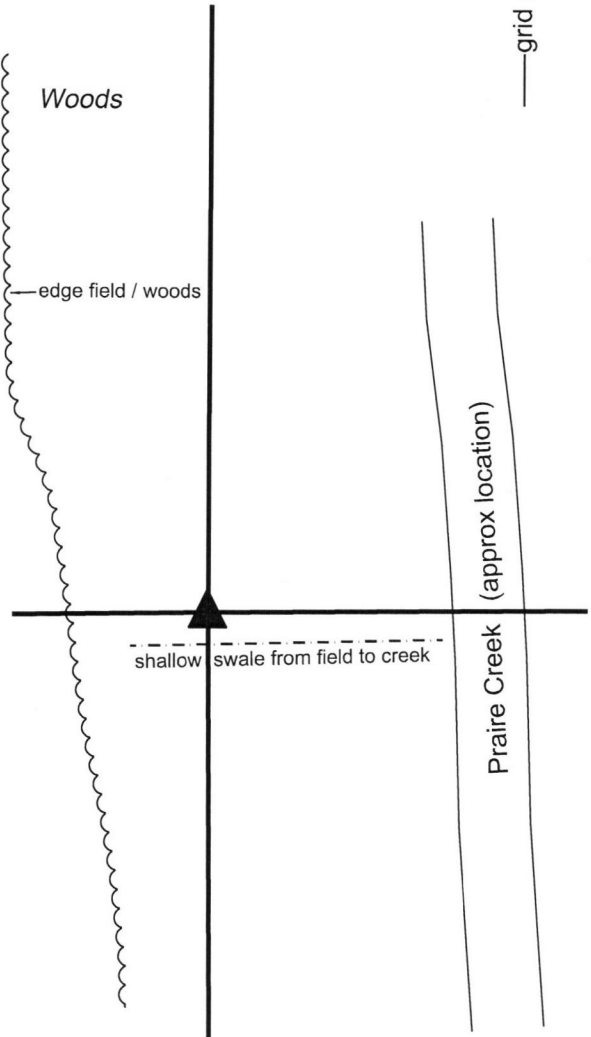
Tilled Field

Woods

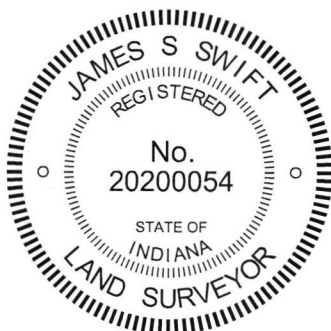
The Harrison monument was set in place of and over the remnants of a wood corner post.

This corner is not an original corner of the PLSS and was not monumented during the original federal survey of 1822. However, the BCS Surveyor's Record shows the corner is shown as being established or already established in a survey dated 1833. This record does not state what monument was set at the corner but does show bearing and distance ties to two trees, a red oak and a pin oak, both 24 inches in diameter. A subsequent record of March 11, 1895 shows the corner as monumented with a stone. The record states, "Found from Pin Oak and stump of Red O. Set rock 13.8.7 at corner. 7 inch tile with two small rock in it under. Rock against SE side." The 1895 record also shows other corners and reports distances between them.

Excavation at this corner occurred on November 9 and 10, 2017. Prior to excavation, a wood corner post with fencing cut off to the north was found at the north edge of a shallow swale, in an area of trees between a tilled field and Prairie Creek. Excavation around the post did not reveal further evidence of the corner. Neither the rocks nor the tile mentioned in the 1895 record were found. However, excavation at another corner referenced in the 1895 record, shown as corner "K" and being approximately one-eighth of a mile west of the subject corner, did yield discovery of the stone called for as being at corner "K." The position of this stone fit precisely with a previously estimated position calculated with respect to the post found at the subject corner and other evidence found to the west which also correlates to the 1895 record. The discovery of the stone found at corner "K" and the harmony of the position of the stone with respect to the 1895 record and the position of the aforementioned wood post at the subject corner was held as confirmation that the wood post is at or extremely close to the position of the corner as originally established in 1833 and perpetuated in 1895. The lack of the discovery of the stone referenced in the 1895 record as marking the subject corner may be attributed to the presence of a shallow swale adjoining the corner to the south. It appears the stone may have been displaced by erosion or may have been removed during previous excavation efforts to define the swale which appears to provide the primary drainage outlet from the large field to the west to Prairie Creek to the east. The found post was accepted as providing the best available evidence of the corner. The above-ground portion of the post was broken off. Most of the subterranean base of the post was also removed, though portions were left in the ground. A Harrison monument was set directly over the remnants of the base of the post.

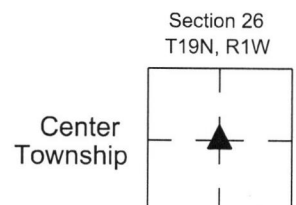


The Harrison monument is situated between the edge of woods to the west and Prairie Creek to the east, and between a large pile of rubble to the north and a shallow swale to the south. The monument is witnessed by an orange fiberglass lathe 'Survey Marker.' No other witness ties are provided.



*Kenneth E. Hedge*  
 Kenneth E. Hedge, County Surveyor

*James S. Swift*  
 James S. Swift, IN LS 20200054  
 February 21, 2018



# SECTION CORNER RECORD

NW 150-200

## BOONE COUNTY SURVEYOR'S OFFICE

State Plane grid coordinates NAD83 (2011):

North: 1753477.44 East: 3114206.60 (U.S. survey feet)

Type of monument: Rebar with metal cap stamped 'Boone County Surveyor'

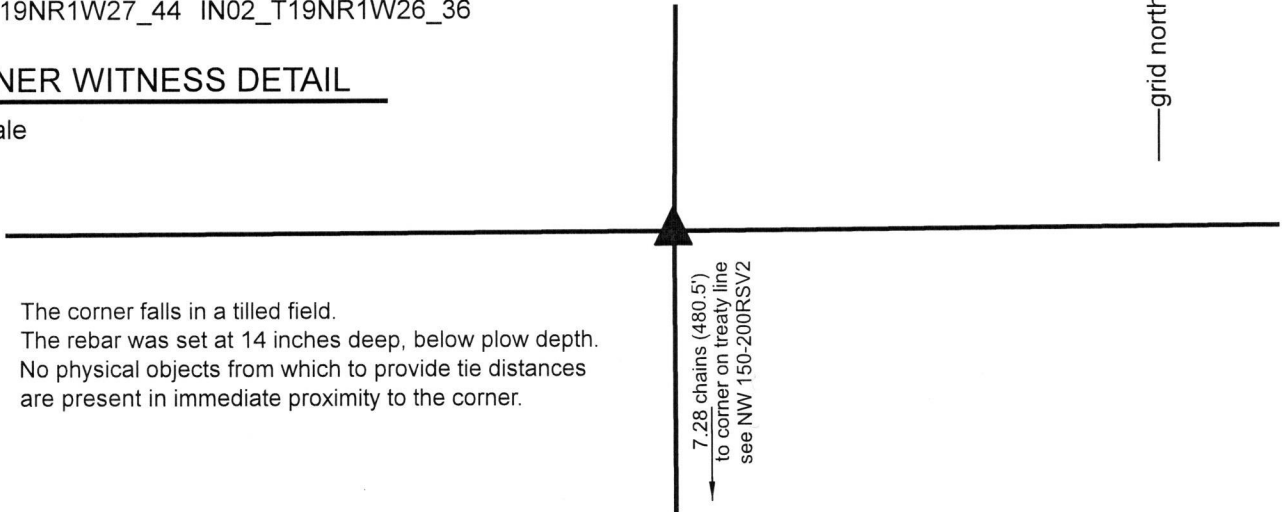
Depth: 14 inches inch below surface of adjacent ground in field

Indiana tie card references:

IN02\_T19NR1W27\_44 IN02\_T19NR1W26\_36

### CORNER WITNESS DETAIL

No scale



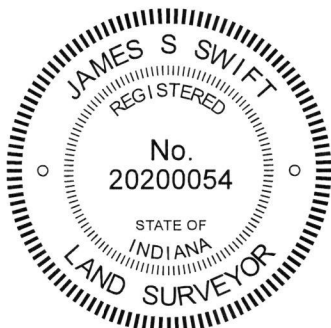
The corner falls in a tilled field.  
 The rebar was set at 14 inches deep, below plow depth.  
 No physical objects from which to provide tie distances  
 are present in immediate proximity to the corner.

The rebar was set at a calculated position, at 7.28 chains north of a wood post found at the intersection of the south line of the Thorntown Reserve and the north south line between sections 26 and 27 (see BCS Corner NW 150-200-RSV2), on the prolongation of a line from the southeast corner of section 26 (see BCS Corner NW 100-200) through the center of said wood post.

This corner was originally established as a wood post during the 1829 subdivision of the former Thorntown Reserve, set at 7.28 chains north of the south line of the reserve. The corner is not specifically described in the Boone County Surveyor's Record beyond the original establishment as a wood post, though it is referenced as the terminal point of measurements in entries of 1833, 1871, 1882, and 1892 and can be directly correlated to an 1875 entry, via information in the 1871 entry.

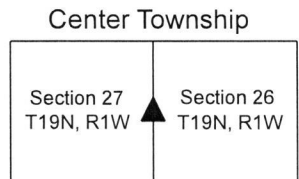
Manual excavation and probing were performed at this corner on November 17, 2017. Prior to excavation, the position had been computed as noted above. It is observed that this position falls approximately 1 foot south of the prolongation of a line beginning 37 links south of a rail purportedly marking the center of section 27, but which is actually believed to be 37 links north of that corner (see BCS Corner NW 150-250 and BCS records of 1882 and 1892), through a wood corner post found 725 feet west of the subject corner. It is also observed that the computed position falls between 2 and 3.5 feet north of the prolongation of various lines determined by evidence found of corners shown in BCS Records of 1871 and 1875 in section 26, said evidence including the center quarter corner of section 26 (see BCS Corner NW 150-150) and 2 corner posts and a stone found along an 1150 foot section of fence between said center of section 26 and the subject corner. Hence, it is noted that the computed position falls slightly south of the easterly prolongation of a line determined by evidence correlating to BCS records in section 27 and slightly north of the westerly prolongation of lines determined evidence correlating to BCS records in section 26. The corner also falls in-line with an ancient tree line bearing south from the corner approximately one-half mile north (see BCS Corner 200-200). It is further observed that evidence of the corner quarter-quarter corner approximately one-quarter mile north, in the form of the intersection of three fields (no post or monument found), falls at the midpoint between the subject corner and said BCS Corner NW 200-200.

No further evidence of the corner was found by manual excavation and probing. The corner falls amidst a tilled field and no physical evidence was found in the immediate vicinity of the corner. The computed position was held and a 30 inch length of 5/8 inch rebar bearing a metal cap stamped 'Boone County Surveyor' was buried at 14 inches deep, below the plow depth of the field to mark the corner. Uncertainties of up to 3 feet in all directions may be associated with the computed position for the corner, based on the various evidence found correlating to the BCS entries of 1871, 1875, 1882 and 1892.



*Kenneth E. Hedge*  
 Kenneth E. Hedge, County Surveyor

*James S. Swift*  
 James S. Swift, IN LS 20200054  
 February 27, 2019



# SECTION CORNER RECORD NW 150-200RSV1

## BOONE COUNTY SURVEYOR'S OFFICE

S.E. Corner  
Thorntown Reserve

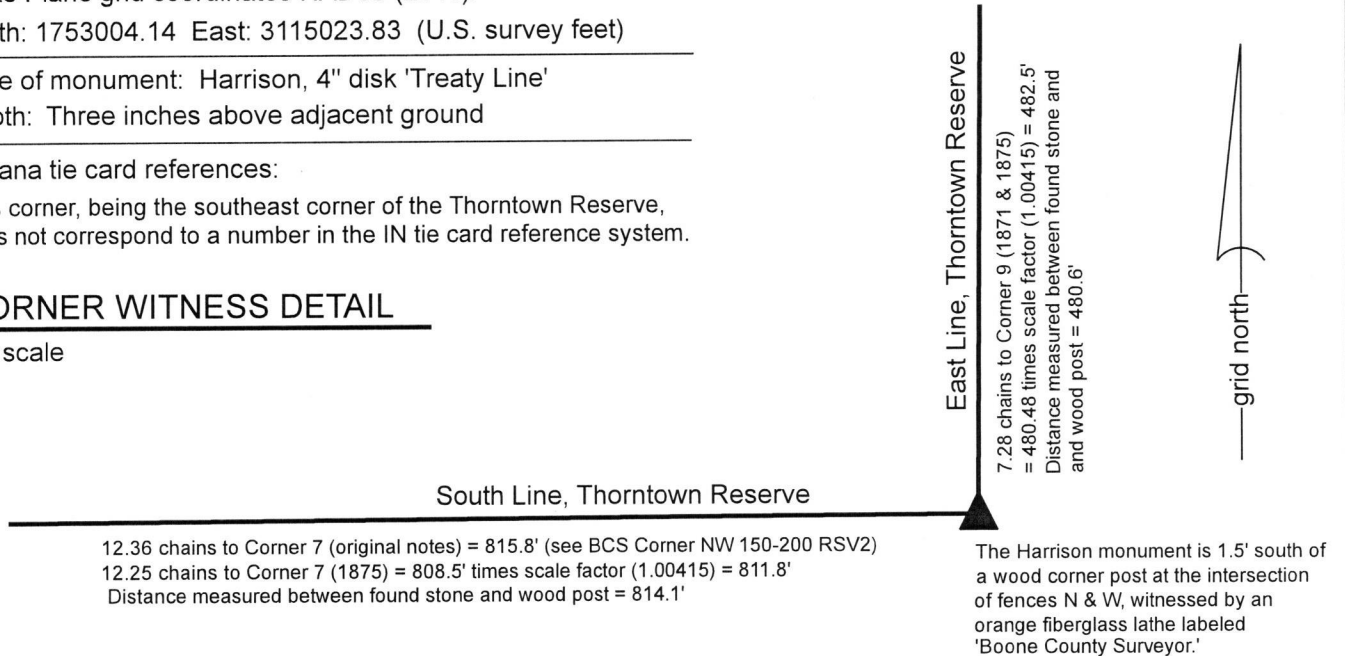
State Plane grid coordinates NAD83 (2011):  
 North: 1753004.14 East: 3115023.83 (U.S. survey feet)

Type of monument: Harrison, 4" disk 'Treaty Line'  
 Depth: Three inches above adjacent ground

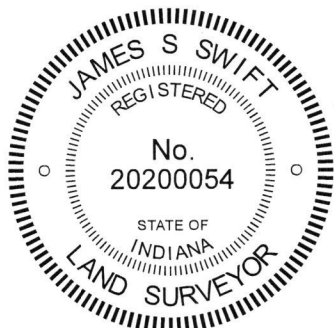
Indiana tie card references:  
 This corner, being the southeast corner of the Thorntown Reserve,  
 does not correspond to a number in the IN tie card reference system.

### CORNER WITNESS DETAIL

No scale



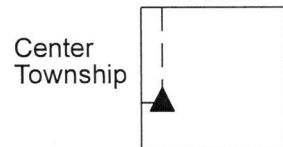
The Harrison monument was set in place of a stone found.  
 This corner represents the southeast corner of the Thorntown Reserve, a 10 square mile area reserved out of the Treaty of St. Mary's Ohio, 1818. The corner was set by the federal government on August 21, 1822 as part of the perimeter survey of the reserve, which was performed in conjunction with the subdivision survey of those parts of Townships 19 and 20 North, Range 1 and 2 West which lie outside the reserve. The corner was originally established as a wood post. An entry in the Boone County Surveyor's Record dated July 7, 1871 shows the corner as being reestablished (shown as Corner 8 in this record) and also shows the adjacent corners to the west and north as being established (Corners 7 and 9 of the record). Another entry, dated March 18, 1875 shows the adjacent corner (Corner 7) and includes distances between the subject corner (southeast corner of the reserve) and the adjacent corners to the north and south along with other relevant distances. An entry dated March 11, 1895 does not show the subject corner but does show other relevant corners referenced as 3, k and l (see BCS Corner NW 150-150 for Corner l) and includes distances between these corners. It is noted that corner 3 first appears in an entry of 1833 and is also referenced in entries of 1868, 1871, 1875 and 1893.  
 The subject corner was excavated on November 14, 2017. Prior to excavation, a wood post was found at the intersection of ancient fences to the north and west, indicating the occupied position of the corner. Wood corner posts were also found providing occupation evidence of the corners shown on the 1871, 1875 and 1893 records as corners 3, 7, 9 and l. A stone was found marking corner K. Prior to excavation, a detailed analysis of the respective distances between and alignment of these corners was performed. This analysis included consideration of known scale factors associated with the distances reported in the BC Surveyor's Record between 1860 and 1895. The analysis yielded the conclusion that the wood corner post found marking occupation evidence at the subject corner was close to, but likely slightly north of, the position of the corner as established in 1871.  
 Excavation in the vicinity of the post revealed a stone found 1.5 feet south of the post, in substantial harmony with the expectations of the analysis of evidence and entries in the B.C. Surveyors Record. The stone was found at approximately 6 inches deep and measured 15 inches E-W by 10 inches N-S by 12 inches tall. The stone was mostly vertical, as found, oriented in cardinal directions and appeared in the field to have been purposely set to mark the corner. No specific marks were found on the stone. A larger stone was also found slightly to the east but was sloping on top, was not vertical, and did not appear to be marking the corner.  
 The smaller stone was accepted as providing the best available evidence of the corner and was held as marking the corner. The stone was removed and replaced with a Harrison monument in the same position. The wood corner post was left in place, 1.5 feet north of the corner. It is noted that the description for the land to the northwest (see Instrument 000356, B.C. Recorder) calls the corner as a wood headpost, being the same as the post discussed above.



*Kenneth E. Hedge*  
 Kenneth E. Hedge, County Surveyor

*James S. Swift*  
 James S. Swift, IN LS 20200054  
 February 27, 2019

Section 26  
 T19N, R1W



# SECTION CORNER RECORD

## BOONE COUNTY SURVEYOR'S OFFICE

NW 150-200RSV2  
 Angle Point on the  
 Thorntown Reserve Line

State Plane grid coordinates NAD83 (2011):

Corner: North: 1752996.97 East: 3114209.78 (U.S. survey feet)

Witness: North: 1752996.80 East: 3114208.80 (U.S. survey feet)

Corner: 9 inch x 9 inch wood post

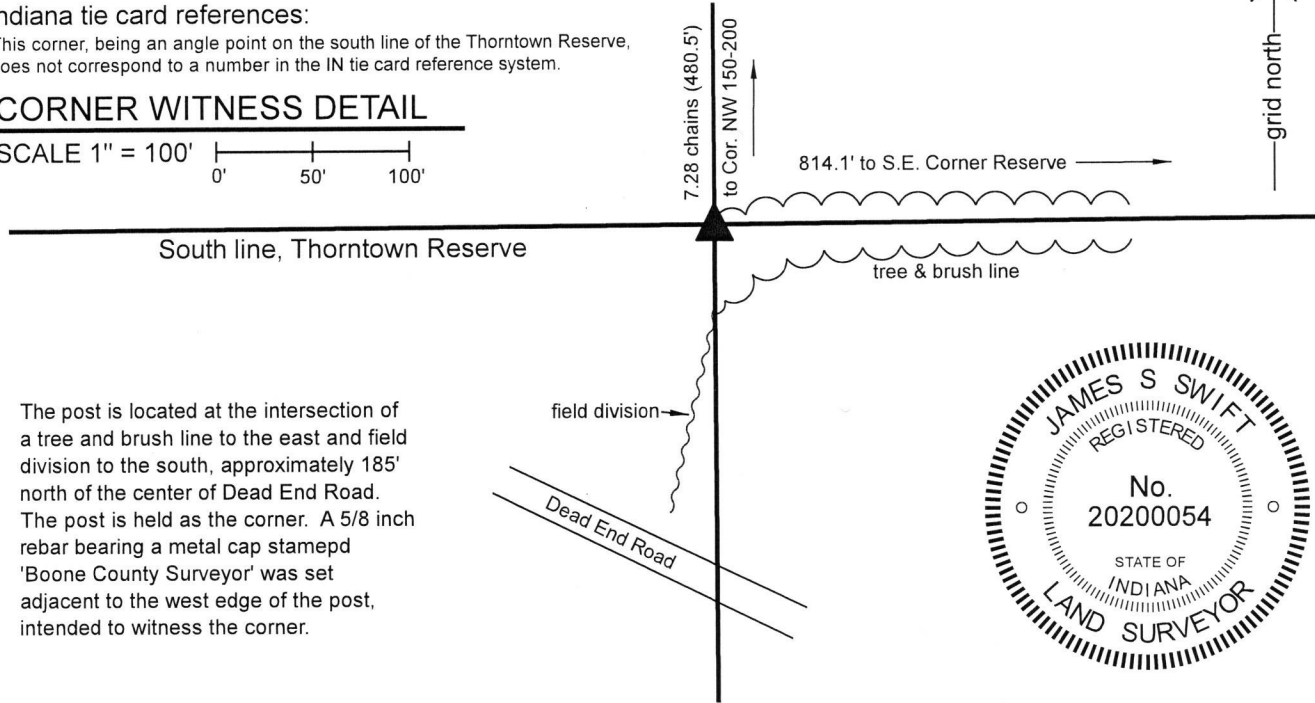
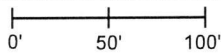
Witness: 5/8" rebar with metal cap stamped 'Boone County Surveyor'

Indiana tie card references:

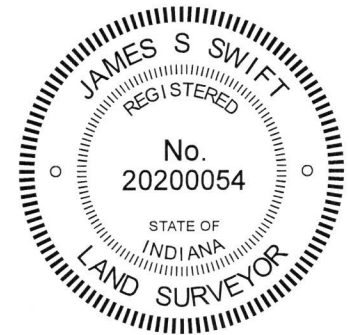
This corner, being an angle point on the south line of the Thorntown Reserve, does not correspond to a number in the IN tie card reference system.

### CORNER WITNESS DETAIL

SCALE 1" = 100'



The post is located at the intersection of a tree and brush line to the east and field division to the south, approximately 185' north of the center of Dead End Road. The post is held as the corner. A 5/8 inch rebar bearing a metal cap stamped 'Boone County Surveyor' was set adjacent to the west edge of the post, intended to witness the corner.



This corner represents an angle point on the south line of the Thorntown Reserve, a 10 square mile area reserved out of the Treaty of St. Mary's, 1818. The corner was originally established as part of the 1822 survey of the perimeter of the reserve, which was performed in conjunction with the subdivision of those parts of Townships 19 and 20 North, Ranges 1 and 2 West which lie outside the reserve. The original notes of 1822 show the corner as being 12.36 chains west of the southeast corner of the reserve and 32.72 chains north of the southwest corner of section 26. The notes from the 1829 subdivision of the interior of the reserve show the corner as being 7.28 chains south of the west quarter corner of section 26.

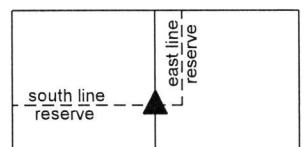
A BCS record of July 7, 1871 includes a reference to the corner, "Drove stake at Reserve corner from trees." A BCS record of March 18, 1875 shows the corner but includes no description. A BCS record of June 19, 1882 states, with respect to the corner, "Reest'd from Lynn stump yet there, dug up old stake. Set Rock 14x10x9 +. Wit Rock 8x6x6 North, 30 [links] NW."

This corner was investigated in detail in conjunction with the determination of the southeast corner of the reserve (adjoining corner to the east) and the west quarter corner of section 26 (adjoining corner to the north) in November, 2017. An ancient wood post at the intersection of a tree line to the east and field division to the south was found providing evidence of the corner. Excavation around the post in November, 2017 revealed no further evidence of the corner. The stones described in the 1882 record were not found. Detailed analysis of the relative positions of evidence found which correlates to the BCS records of 1871, 1875 and 1882 was performed (see discussion for BCS corners NW 150-200 and NW 150-200-RSV1). This analysis yielded the conclusion that the wood post was at or very near the position of the corner as originally established in 1822. The distance between the post and the S.W. corner of section 26 (see BCS Corner NW-100-200) is approximately 3.2 feet longer than shown on the 1822 notes. The west quarter corner of section 26 was established at record distance of 7.28 chains north of this post, as discussed on the document sheet for that corner. No proportional scaling was applied as the record distance works with accessory evidence for said quarter corner and the distances to the north and south of the subject corner are the result of measurements performed at different times (1822 to the south and 1829 to the north).

Given no further evidence found in the vicinity of the post, the post was held as marking the corner. It is noted that the post is called as a corner in the description for the land adjoining the corner on the northeast, northwest and west (Instrument 0000356, Boone County Recorder).

A 30 inch length of 5/8 inch rebar was set adjacent to the west side of the post in February, 2019. The center of the base of the post is held as the corner and the rebar is intended as a witness to the corner.

Center Township  
 Section 27 Section 26  
 T19N, R1W T19N, R1W



*Kenneth E. Hedge*  
 Kenneth E. Hedge, County Surveyor

*James S. Swift*  
 James S. Swift, IN LS 20200054

February 27, 2019



# SECTION CORNER RECORD

NW 200-100

## BOONE COUNTY SURVEYOR'S OFFICE

State Plane grid coordinates NAD83 (2011):

North: 1756173.77 East: 3119494.06 (U.S. survey feet)

Type of monument: Harrison, 4" disk 'Section Corner'

Depth: Flush with adjacent road surface

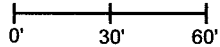
Indiana tie card references:

IN02\_T19NR1W23\_80 IN02\_T19NR1W24\_72

IN02\_T19NR1W26\_08 IN02\_T19NR1W25\_00

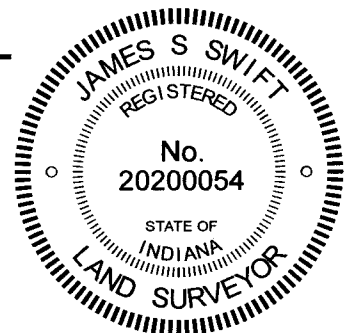
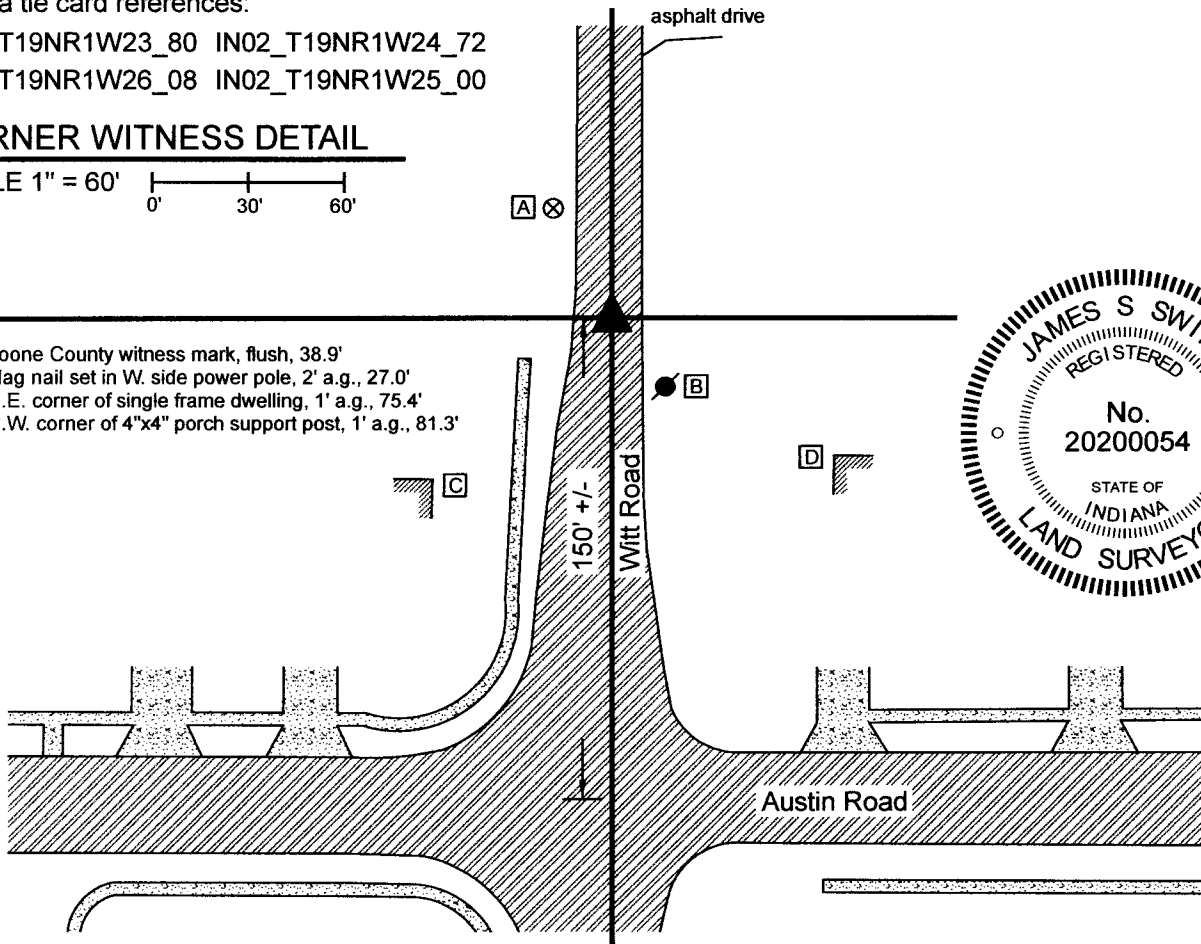
### CORNER WITNESS DETAIL

SCALE 1" = 60'



[A] ⊗

- A - Boone County witness mark, flush, 38.9'
- B - Mag nail set in W. side power pole, 2' a.g., 27.0'
- C - N.E. corner of single frame dwelling, 1' a.g., 75.4'
- D - N.W. corner of 4"x4" porch support post, 1' a.g., 81.3'



The Harrison monument was set over a vertical section of railroad rail found.

A BCS record dated September 14-17, 1857 states, with respect to this corner, "Reest. Set Rock 4x10." Another record, dated June 10, 1865, discusses the corner at length, disputing the position of the rock set in 1857 due to the fact that it did not agree with the bearing trees. The true position of the corner was established from the stump of one bearing tree and evidence, unstated, of the previous location of another bearing tree. The entry concludes with the following statement: "Then in digging hole in which to set a Rock, dug up the point of stake that had been set at corner. I thence reestablished this corner by setting a Rock marked +...." References to numerous bearing trees follow the discussion. An entry of August 21, 1866 references the 1865 entry.

A BCS tie card dated December 9, 1968 states "Stone Located."

This corner was monumented with minimal excavation on November 3, 2022. A vertical section of railroad rail marking this corner has long been exposed in a hole in the asphalt in the center of Witt Road. The rail was almost certainly set as part of the 1968 tie card. It is known that BCS field crews of that era removed stones, if found, and replaced them with vertical sections of railroad rail. The found rail is believed to be the monument set in 1968 and is believed to be in place of a found stone. The top of the rail was at 2 inches deep. The top (lid) of a Harrison monument was set over the top of the rail and anchored to the rail with concrete and wire. It is noted that this monument cannot be raised in the same fashion as most Harrison monuments set in roadways in Boone County. In the event that Witt Road is paved, the monument will need to be replaced. In such an event, sufficient clearance would be available to install an extendable monument above the rail.

This corner was originally established as a wood post in 1822.

#### Center Township

Section 23 T19N, R1W	Section 24 T19N, R1W
Section 26 T19N, R1W	Section 25 T19N, R1W

*Kenneth E. Hedge*      *James S. Swift*

Kenneth E. Hedge, County Surveyor    James S. Swift, IN LS 20200054    November 16, 2022

# SECTION CORNER RECORD

## BOONE COUNTY SURVEYOR'S OFFICE

NW 200-150

State Plane grid coordinates NAD83 (2011):

North: 1756168.93 East: 3116855.80 (U.S. survey feet)

Type of monument: INDOT Type C - brass plug in concrete

Depth: flush with adjacent ground

Indiana tie card references:

IN02\_T19NR1W23\_76 IN02\_T19NR1W26\_04

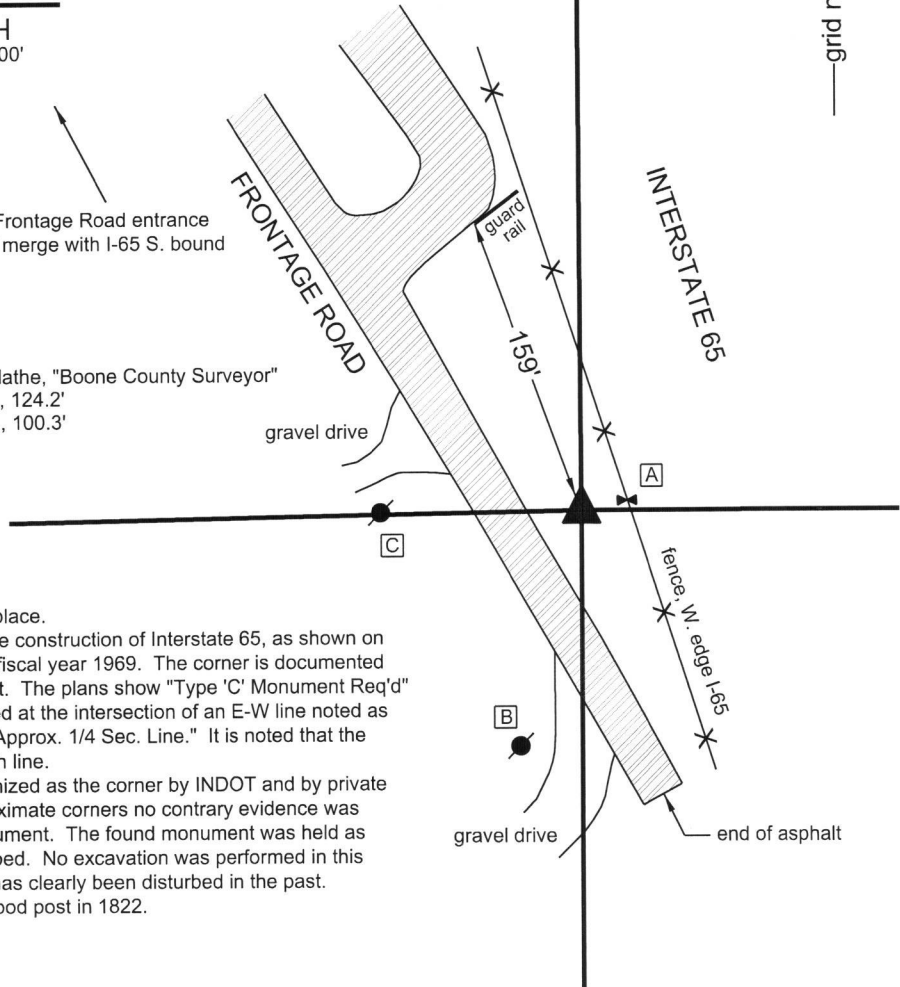
### CORNER WITNESS DETAIL

SCALE 1" = 100'

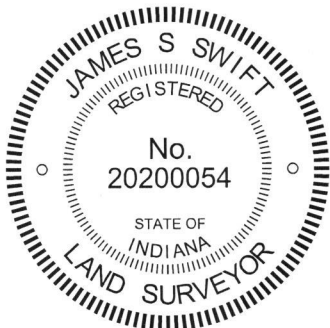


Access corner via Frontage Road entrance on U.S. 52 north of merge with I-65 S. bound

- A - W. edge, steel t-post, 24.3'  
Post is witnessed with orange fiberglass lathe, "Boone County Surveyor"
- B - Mag nail set in E. side power pole, 2' a.g., 124.2'
- C - Mag nail set in E. side power pole, 2' a.g., 100.3'



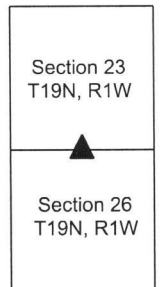
The INDOT Type C monument was found in place. This monument was set in association with the construction of Interstate 65, as shown on the plans for that road, Project 65-5(35) 140, fiscal year 1969. The corner is documented on page 15 of 202 of the plans for said project. The plans show "Type 'C' Monument Req'd" at station 78+86, 153.56 LT, graphically placed at the intersection of an E-W line noted as "Sec. Line." and a north-south line noted as "Approx. 1/4 Sec. Line." It is noted that the plans show fencing in-line with the north-south line. The monument is known to have been recognized as the corner by INDOT and by private surveyors for many years. It fits well with proximate corners no contrary evidence was found which disputes the position of the monument. The found monument was held as marking the corner and left in place, undisturbed. No excavation was performed in this area, as the immediate vicinity of the corner has clearly been disturbed in the past. This corner was originally established as a wood post in 1822.



*Kenneth E. Hedge*  
 \_\_\_\_\_  
 Kenneth E. Hedge, County Surveyor

*James S. Swift*  
 \_\_\_\_\_  
 James S. Swift, IN LS 20200054  
 October 11, 2017

Center Twp



# SECTION CORNER RECORD

NW 200-200

## BOONE COUNTY SURVEYOR'S OFFICE

State Plane grid coordinates NAD83 (2011):

North: 1756124.54 East: 3114220.42 (U.S. survey feet)

Type of monument: Harrison, 4" disk 'Section Corner'

Depth: Two inches above adjacent ground

Indiana tie card references:

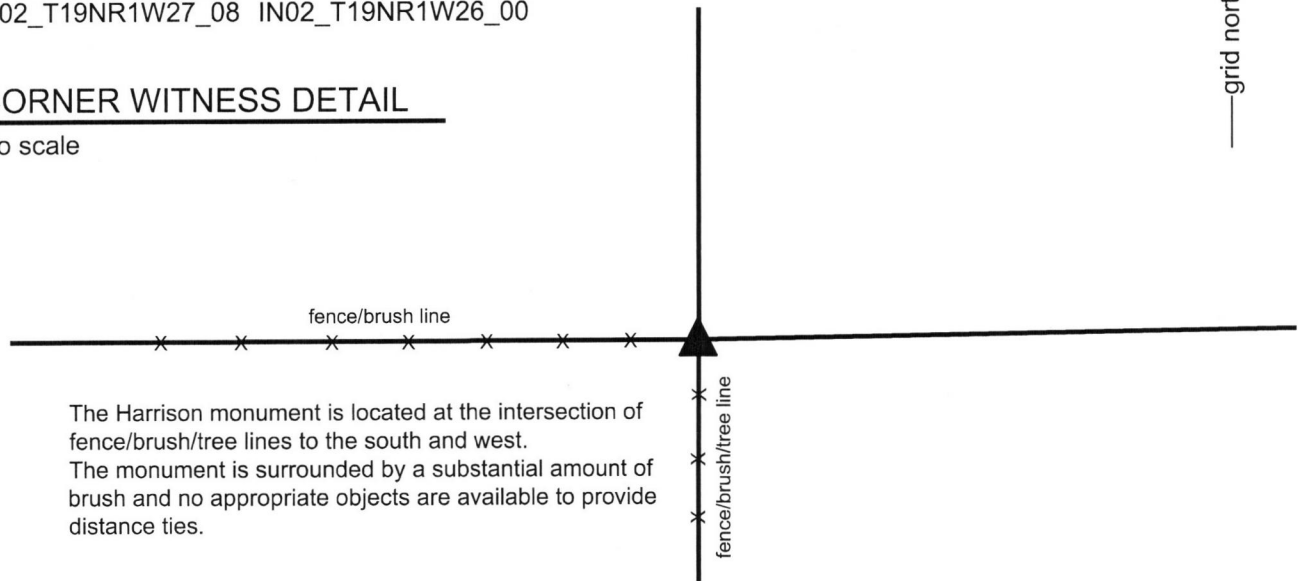
IN02\_T19NR1W22\_80 IN02\_T19NR1W23\_72

IN02\_T19NR1W27\_08 IN02\_T19NR1W26\_00



### CORNER WITNESS DETAIL

No scale



The Harrison monument is located at the intersection of fence/brush/tree lines to the south and west. The monument is surrounded by a substantial amount of brush and no appropriate objects are available to provide distance ties.

The Harrison monument was set over a stone found.

A BCS record dated June 19-20, 1882 states, with respect to this corner, "Section Corner to 26, 27, 22, 23 reestablished from O.B.Trees, stumps yet there, and set rock 16x16x14."

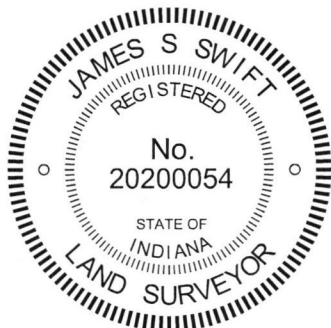
No recent BCS tie cards were found referencing this corner.

This corner was excavated and monumented on October 20, 2017. Prior to excavation a 5/8 inch rebar was found in the immediate vicinity of the corner. The rebar appeared to be substantially disturbed, leaning towards the north. No corner post was observed, but the position of the rebar fit well with the prolongation of standing fences to the south and west, as previously located. Excavation revealed a large stone found immediately east of the rebar. Most of the stone was exposed and the stone was determined to be 16 inches E-W by 8 inches N-S by 16 inches tall. The full height was measured on the south side. The stone had a distinct E-W ridge across the top with a discernable high point in the approximate center of the ridge.

The stone fit the characteristics of a corner stone, standing upright, oriented in cardinal directions and with an evident high point and it appeared in the field to have been purposely set to mark the corner. No specific markings were found on the stone, nor were any noted in the record. The dimensions of the stone matched two of the dimensions from the 1882 record, being 16 inches E-W by 16 inches tall. It is not known why the third dimension did not match the record. It is noted that in the discovery of other stones marking corners throughout the county, other instances have been noted wherein the found stone matched two of the three dimensions reported. No explanation is offered for this other than perhaps a scrivener's error in creating the record. All other characteristics of the stone indicated that it was intended to mark the corner and it was accepted as the best evidence of the original position of the corner. The rebar had been situated against the west end of the stone.

The stone was left in place. Most of the stone was encased in concrete and a Harrison monument was set directly above the high point of the E-W ridge across the top of the stone.

This corner was originally established as a wood post in 1829.



*Kenneth E. Hedge*  
 \_\_\_\_\_  
 Kenneth E. Hedge, County Surveyor

*James S. Swift*  
 \_\_\_\_\_  
 James S. Swift, IN LS 20200054  
 November 7, 2017

Center Township

Section 22 T19N, R1W	Section 23 T19N, R1W
Section 27 T19N, R1W	Section 26 T19N, R1W