

SECTION CORNER RECORD

BOONE COUNTY SURVEYOR'S OFFICE

SE 400-1000

State Plane grid coordinates NAD83 (NSRS 2007):

North: 1725778.50 East: 3178101.90 (U.S. survey feet)

Type of monument: Stone (blue granite)

Depth: top at 2 inches above grade

Indiana tie card references:

IN02_T18NR2E22_80

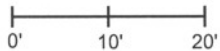
IN02_T18NR2E23_72

IN02_T18NR2E27_00

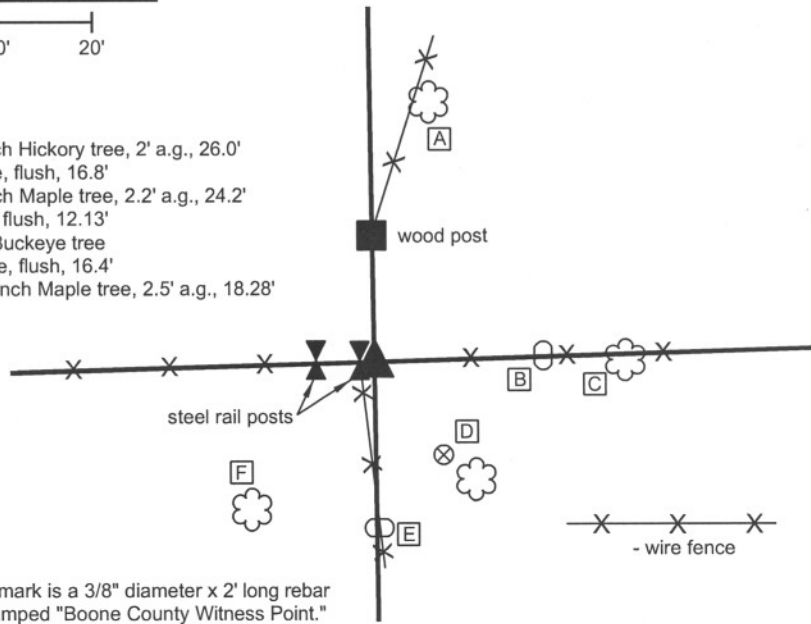
IN02_T18NR2E26_08

CORNER WITNESS DETAIL

SCALE 1" = 20'



- A - Mag nail set in S. side, 13 inch Hickory tree, 2' a.g., 26.0'
- B - Top, west side, witness stone, flush, 16.8'
- C - Mag nail set in W. side, 24inch Maple tree, 2.2' a.g., 24.2'
- D - Boone County witness mark, flush, 12.13'
point is 1.9' N.W. of 16 inch Buckeye tree
- E - Top, north side, witness stone, flush, 16.4'
- F - Mag nail set in N.E. side, 16 inch Maple tree, 2.5' a.g., 18.28'



Boone County witness mark is a 3/8" diameter x 2' long rebar bearing a metal cap stamped "Boone County Witness Point."

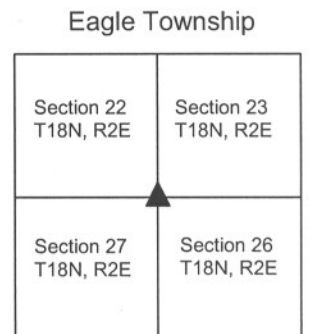
A BCS record of March 14-15, 1894 states "Re-established by intersection of lines. Set Blue rock + 20.9.8 at corner. White flint rock 16.10.6 East 25 links. Blue rock W 18.14.11 South 25 links."

All three rocks were found and the corner stone was found to be situated at approximately the 25 link (16.5 feet) distance from the witness stones (see measured tie distances above.) The + is not visible on the corner stone, though it is clearly a blue granite stone. The stone was left in place and witnessed with an orange fiberglass witness post. This stone is noted as being found on numerous recorded surveys. This corner was originally established as a wood post in July 1821.



Kenneth E. Hedge
Kenneth E. Hedge, County Surveyor

James S. Swift
James S. Swift, IN LS 20200054
March 11, 2009



PHOTOGRAPHIC DOCUMENTATION

Date of photography: April 9, 2008

Corner stone as visible prior to excavation - view from southeast.



Corner stone with some of the stone exposed - overhead view from southeast.



Corner stone - view from above.



Corner stone - side view from north.



Record witness stone to the south.



Record witness stone to the east.



For details and documentation, refer to related sheet "Section Corner Record."

SECTION CORNER RECORD

SE 400-1050

BOONE COUNTY SURVEYOR'S OFFICE

State Plane grid coordinates NAD83 (2011):

North: 1725857.36 East: 3180797.00 (U.S. survey feet)

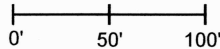
Type of monument: No monument set,
corner falls in window well

Indiana tie card references:

IN02_T18NR2E23_76 IN02_T18NR2E26_04

CORNER WITNESS DETAIL

SCALE 1" = 100'



- A - Survey control point, flush, 113.1'
- B - Mag Nail found in C/L Club Ridge Estates Rd., flush, 123.2'
- C - Boone County witness mark, flush, 6.8'
- D - Boone County witness mark, flush, 8.8'
- E - S.W. corner, brick house, '3953 Club Ridge Estates Rd., 3' a.g., 28.2'
- F - N.E. corner of window well bump-out, 4' a.g., 5.1'

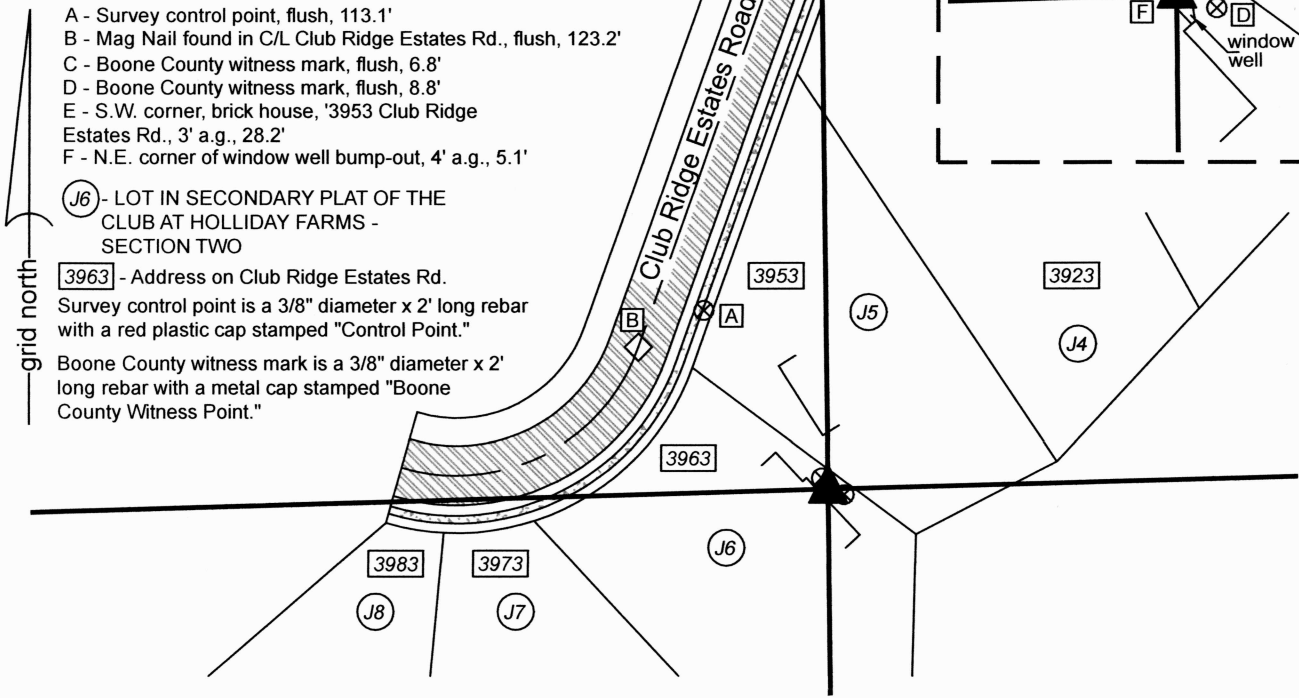
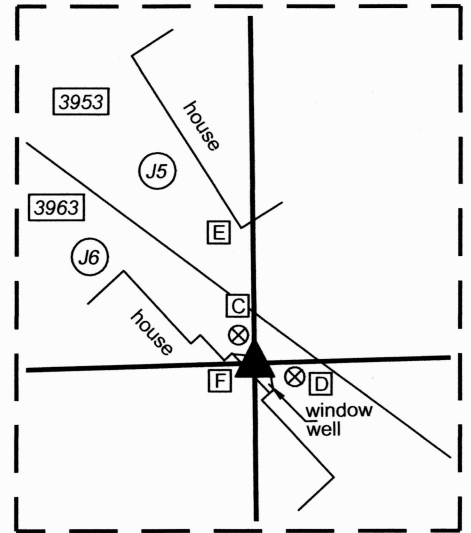
(J6) - LOT IN SECONDARY PLAT OF THE CLUB AT HOLLIDAY FARMS - SECTION TWO

3963 - Address on Club Ridge Estates Rd.

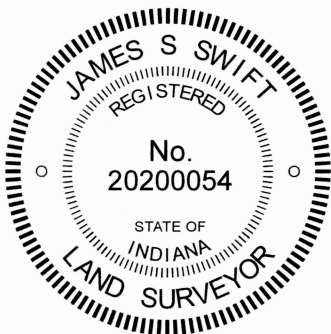
Survey control point is a 3/8" diameter x 2' long rebar with a red plastic cap stamped "Control Point."

Boone County witness mark is a 3/8" diameter x 2' long rebar with a metal cap stamped "Boone County Witness Point."

CORNER DETAIL
SCALE 1" = 40'

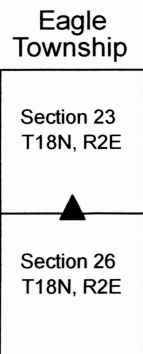


A stone was previously found and held as marking this corner, as documented on a BCS Section Corner Record sheet dated March 11, 2009 and revised July 14, 2010. Subsequently, the stone has been removed as part of construction of a house adjacent to the corner. The position of the corner falls within a window well associated with the adjacent house. No monument was set in the window well. Two 3/8-inch diameter by 24-inch long rebars with metal cap stamped 'Boone County Witness Point' were set nearby as witnesses to the actual corner. The previous record for this corner stated the following: 'The stone was found in place. A BCS record of September 27, 1866 states "Reestablished. Set rock 18.12 by 10 in. Marked +. One under it 6.4 1/2 by 3 + on top." A BCS tie card dated June 4, 1991 states "rock fd. (0.7' x 0.4') 0.5' E of leaning fence post (question whether this is corner of record.)" The record stone was found flush with the top exposed, approximately 1.5 feet north of the leaning fence post. It is not clear which rock the 1991 tie card was describing. The record stone was exposed sufficiently to determine that it fits the dimensions and markings of the record stone. The etched "+" is visible on the sloping side of the stone, slightly south of the high point. The specific point on the stone held as the corner is the clearly identifiable high point. This corner was originally established as a wood post in July, 1821.'



Carol Cunningham
Carol Cunningham, County Surveyor

James S. Swift
James S. Swift, IN LS 20200054
April 10, 2024



SECTION CORNER RECORD

SE 400-1100

BOONE COUNTY SURVEYOR'S OFFICE

State Plane grid coordinates NAD83 (NSRS 2007):

North: 1725930.58 East: 3183484.27 (U.S. survey feet)

Type of monument: Stone

Depth: 2 inches above grade

Indiana tie card references:

IN02_T18NR2E23_80

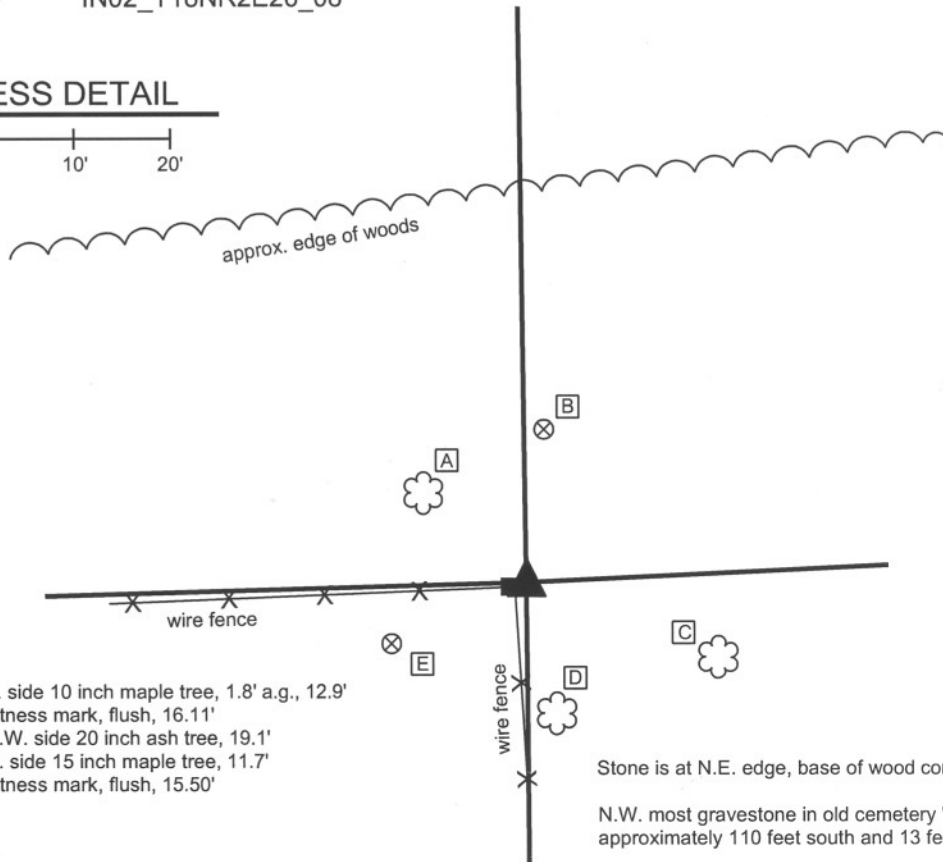
IN02_T18NR2E24_72

IN02_T18NR2E25_00

IN02_T18NR2E26_08

CORNER WITNESS DETAIL

SCALE 1" = 20'



- A - Mag nail set in E. side 10 inch maple tree, 1.8' a.g., 12.9'
- B - Boone County witness mark, flush, 16.11'
- C - Mag nail set in N.W. side 20 inch ash tree, 19.1'
- D - Mag nail set in N. side 15 inch maple tree, 11.7'
- E - Boone County witness mark, flush, 15.50'

Stone is at N.E. edge, base of wood corner post.

N.W. most gravestone in old cemetery "John Purdin" is approximately 110 feet south and 13 feet east of corner.

The stone was found in place.

A BCS record of April 14, 1880 states "Reestablished from Beech bearing tree. Set Rock 18.9 by 11 in. + on top." No BCS tie cards were found for this corner. Numerous private surveys call for a stone found. The stone is visible in the ground, protruding approximately 2 inches out of the ground at the northeast corner of the base of a an old wood corner post. The "+" is clearly visible on top, which represents the precise location held as the corner for this tie card.

This corner was originally established as a wood post in July, 1821.



Kenneth E. Hedge
 Kenneth E. Hedge, County Surveyor

James S. Swift
 James S. Swift, IN LS 20200054

March 11, 2009 Revised July 14, 2010

Eagle Township

Section 23 T18N, R2E	Section 24 T18N, R2E
Section 26 T18N, R2E	Section 25 T18N, R2E

PHOTOGRAPHIC DOCUMENTATION

Date of photography: March 6, 2009

The stone from above.



The stone from above and east.



The stone, old wood post and fiberglass witness post.
View from the east.



For details and documentation, refer to related sheet "Section Corner Record."

SECTION CORNER RECORD

SE 450-1000

BOONE COUNTY SURVEYOR'S OFFICE

State Plane grid coordinates NAD83 (NSRS 2007):

North: 1723136.86 East: 3178137.61 (U.S. survey feet)

Type of monument: Harrison, 4" disk 'Section Corner'

Depth: Flush with adjacent ground

Indiana tie card references:

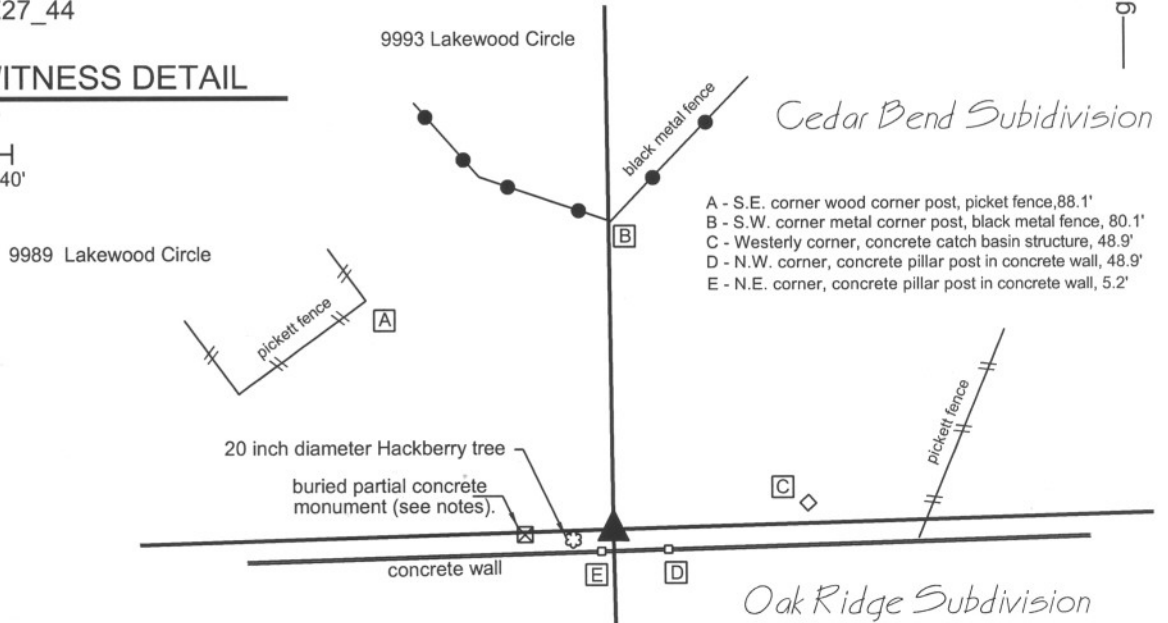
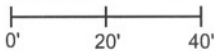
IN02_T18NR2E26_36

IN02_T18NR2E27_44



CORNER WITNESS DETAIL

SCALE 1" = 40'



- A - S.E. corner wood corner post, pickett fence, 88.1'
- B - S.W. corner metal corner post, black metal fence, 80.1'
- C - Westerly corner, concrete catch basin structure, 48.9'
- D - N.W. corner, concrete pillar post in concrete wall, 48.9'
- E - N.E. corner, concrete pillar post in concrete wall, 5.2'

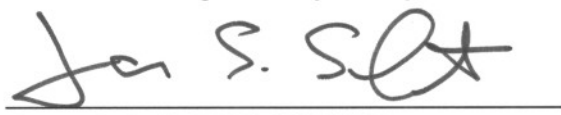
The Harrison monument was set at the calculated location of a stone which previously monumented this corner.

A BCS record of March 14, 15, 16, 1892 shows numerous corners monumented with stones. With respect to the subject corner of this tie card (corner H, Section 26) the record states "Found from stump of walnut known to witnesses present as original B.T. Set rock + 20.18.14 at corner." In the same record it is demonstrated that a line was measured from this corner to the east quarter of section 26, that the center of section was established and monumented and that two corners between the subject corner and the center of section were also established and monumented, being corners "9" and "15", as shown on the record, which are approximately one-quarter mile east and approximately one-eighth mile east of the subject corner, respectively. A BCS reference sheet shows the record stone at the subject corner as found and witnessed on May 21, 1989.

The land adjacent to this corner on the north was platted in 1978 as Cedar Bend subdivision as recorded in Plat Book 6, page 29-29A, Office of the Boone County Recorder. This plat shows a location of the corner and it is known that a concrete monument was set at the location shown on the plat of Cedar Bend. The aforementioned BCS reference sheet indicates that the record stone was still present in 1989, but the 1978 plat of Cedar Bend makes no mention of this monument. The land adjacent to this corner on the south was platted in 1991 as Oak Ridge Section I as recorded in Plat Book 7, pages 57-59 in said Recorder's Office. This plat holds the position of the concrete monument as the corner, in agreement with the plat of Cedar Bend. It is known that land disturbing activities took place in the immediate vicinity of the corner as part of the development of these subdivisions, particularly Oak Ridge Section I. In 1994 the land south of the corner and east of Oak Ridge Section I was platted as Oak Ridge Estates, as recorded in Plat Book 8, pages 58-62 in said Recorder's Office. The boundary survey which preceded the plat is recorded in Survey Book 1, pages 69-70 in said Recorder's Office, dated August 26, 1994 and recorded November 23, 1994. This survey disputes the position of the concrete monument as the corner and reconstructs the location of the corner with respect to the corner stones and/or their witnesses described in the 1892 record as corners "9", "15", and "O". The concrete monument is shown to be 23.2 feet west of the computed position for the corner. At the time of the survey, the record stone was not found and was believed to be obliterated due to land disturbing activities. The Surveyor's Report on this survey is thorough in its explanation of its findings and the reasoning for why the corner was established where it was. A 5/8 inch rebar was set at the computed position of the corner. The subsequent plat of Oak Ridge Estates holds the 5/8 inch rebar as the corner.

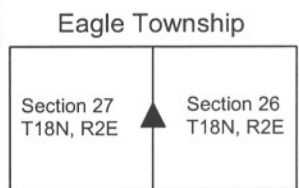
Field reconnaissance for this corner was performed in October 2008 and June 2009. The concrete monument was found, broken-off approximately 8 inches below grade. The rebar was not found. The record stone at corner "15" was found and the record witness 16.5 feet west of corner "9" was found. The record stone at corner "9" was found by probe but is underneath the root of a large cherry tree and the actual stone was not exposed. Several monuments shown on plat of Oak Ridge Estates were also found, including a concrete monument at the northwest corner of the subdivision, a concrete monument at the subdivision corner which is also the southwest corner of lot 150, and rebars bearing the cap of the subdividing survey company (Cripe) at the northwest corner of lot 150 and the southwest corner of lot 111. Using the above described stones and artificial monuments, the position of the rebar was reconstructed to within a positional uncertainty of approximately 0.2 of a foot. The conclusions of the survey recorded in Survey Book 1, pages 69-70 are accepted and a Harrison monument was set at the computed position of the rebar, which had been set at the computed position of the stone described in the 1892 record. The broken-off concrete monument was left in place, 23.2 feet west of the corner. This corner was originally established as a wood post in July, 1821.


 Kenneth E. Hedge, County Surveyor



James S. Swift, IN LS 20200054

July 14, 2010



SECTION CORNER RECORD

SE 450-1100

BOONE COUNTY SURVEYOR'S OFFICE

State Plane grid coordinates NAD83 (NSRS 2007):

North: 1723290.34 East: 3183509.39 (U.S. survey feet)

Type of monument: Harrison, 4" disk 'Section Corner'

Depth: 3 inches above adjacent ground.

Indiana tie card references:

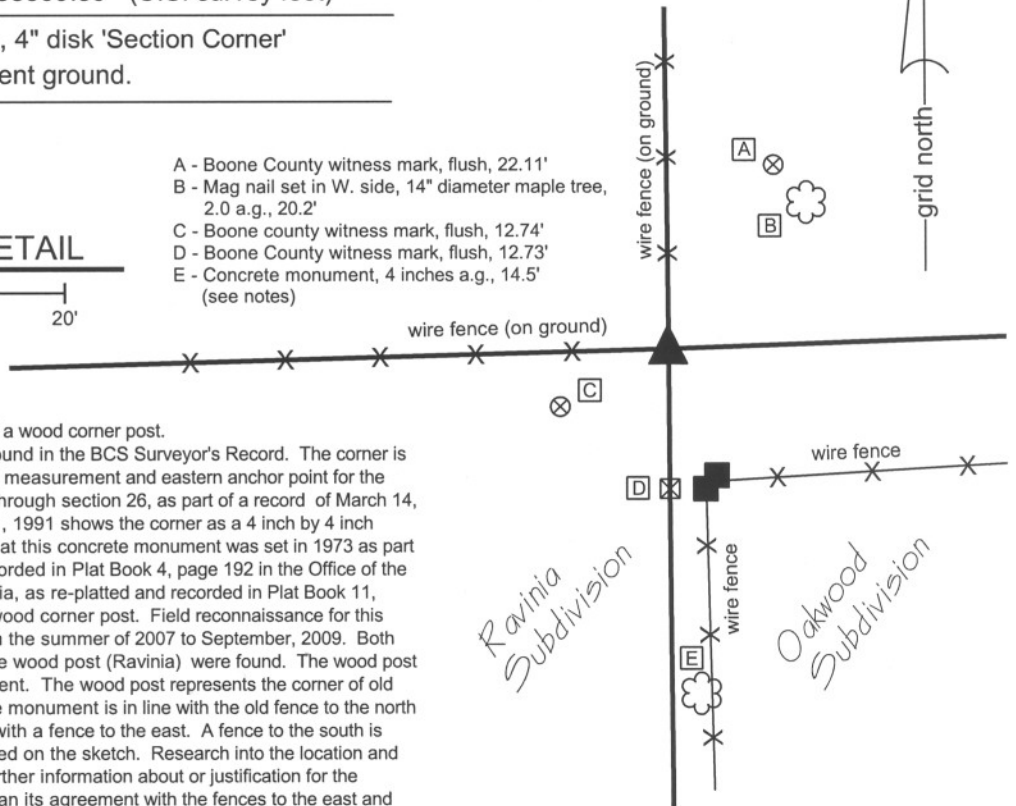
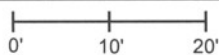
IN02_T18NR2E25_36

IN02_T18NR2E26_44

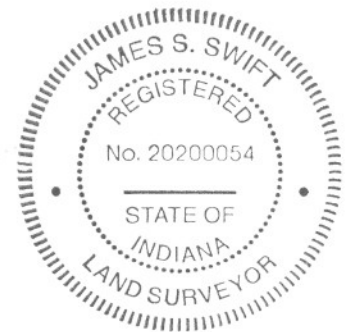
- A - Boone County witness mark, flush, 22.11'
- B - Mag nail set in W. side, 14" diameter maple tree, 2.0 a.g., 20.2'
- C - Boone county witness mark, flush, 12.74'
- D - Boone County witness mark, flush, 12.73'
- E - Concrete monument, 4 inches a.g., 14.5' (see notes)

CORNER WITNESS DETAIL

SCALE 1" = 20'



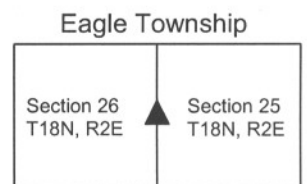
The Harrison monument was set in place of a wood corner post. No specific description of this corner was found in the BCS Surveyor's Record. The corner is shown, however, as the terminal point for a measurement and eastern anchor point for the establishment of the E-W half section line through section 26, as part of a record of March 14, 15, 16, 1892. A BCS tie card dated May 31, 1991 shows the corner as a 4 inch by 4 inch concrete monument found. It is believed that this concrete monument was set in 1973 as part of the platting of Oakwood Subdivision, recorded in Plat Book 4, page 192 in the Office of the Boone County Recorder. The plat of Ravinia, as re-platted and recorded in Plat Book 11, page 56, demonstrates the corner to be a wood corner post. Field reconnaissance for this corner was performed at various times from the summer of 2007 to September, 2009. Both the concrete monument (Oakwood) and the wood post (Ravinia) were found. The wood post was 14.5 feet north of the concrete monument. The wood post represents the corner of old fences to the west and north. The concrete monument is in line with the old fence to the north (beginning at the wood post) and is in line with a fence to the east. A fence to the south is slightly east of both objects, as demonstrated on the sketch. Research into the location and documentation of this corner yielded no further information about or justification for the location of the concrete monument other than its agreement with the fences to the east and north. However, significant evidence was found in support of the position of the wood post as the corner. The aforementioned 1892 record demonstrates that the line from the west quarter corner of section 26 (H) and the east quarter corner (D) was measured. Subsequent measurements and references indicate that the center of section (O) as well as two other corners, being east of corner "H" by one quarter mile (9) and one eighth mile (15), respectively, were established and monumented as part of the same three day field campaign. Another record, dated March 14 and 15, 1894, exactly two years later, demonstrates that another corner on the E-W half section line was established, referred to as corner "P" and being east of corner "O" at the center of section. Notably, the record also shows that the same Deputy Surveyor, Thomas W. Huckstep, was on both crews as was one of the chainmen, Thomas H. Shelburn. While the 1894 record does not mention corner "D" which is the subject of the current record, it is reasonable to conclude that two field parties with common members would hold the same line on campaigns two years apart. As part of the field reconnaissance for the subject corner and the west quarter corner of section 26, the stone at corner "15" was found, the witness stone 16.5 feet west of corner "9" was found, the location of the west quarter corner of section 26 was re-established per the location of these two stones and the witness stones to corner "O" (See the record for corner SE-450-1000) and a wood post was found at the occupied corner representing corner "p". This post at "p" also represents the westerly terminus of the fence which extends west from the wood post in question as part of the current record. All of the monuments and evidence found along the E-W half section line fit well with a line connecting the west quarter corner of section 26 with the wood post in question, with individual stones or posts being no more than 1.5 feet from the straight line. Clearly, the wood corner post at the intersection of the old fences to the north and west is at or near the corner held by the 1892 and 1894 field parties. It is also noted that the post falls very close to the midpoint of the line connecting the northeast and southeast corners of section 26. Excavation of the corner took place on September 18 and 21, 2009. Several stones were found around the post but all appeared to be rocks intended to brace the post rather than specific section corner stones. The post itself is the wood from a Hedge tree, also known as a Hedge Apple tree or Osage Orange tree. This wood is particularly dense and resistant to subterranean rotting. Though the post appeared on the outside to be very old and the fencing attached to it was clearly old, the post was in nearly perfect condition on the inside. It is not known how old the post is, but it was observed that it could have stood for many, many more years without significant deterioration. The post may well have been present at the time of the 1892 field campaign. The post was partially removed, with the bottom portion left in the ground, and the Harrison monument was set directly in place of the post, directly over the bottom portion. The concrete monument was left in place but is not considered to represent the location of the corner. This corner was originally established as a wood post in July, 1821.



James S. Swift

James S. Swift, IN LS 20200054
July 14, 2010

Kenneth E. Hedge
Kenneth E. Hedge, County Surveyor



SECTION CORNER RECORD

SE 500-1000

BOONE COUNTY SURVEYOR'S OFFICE

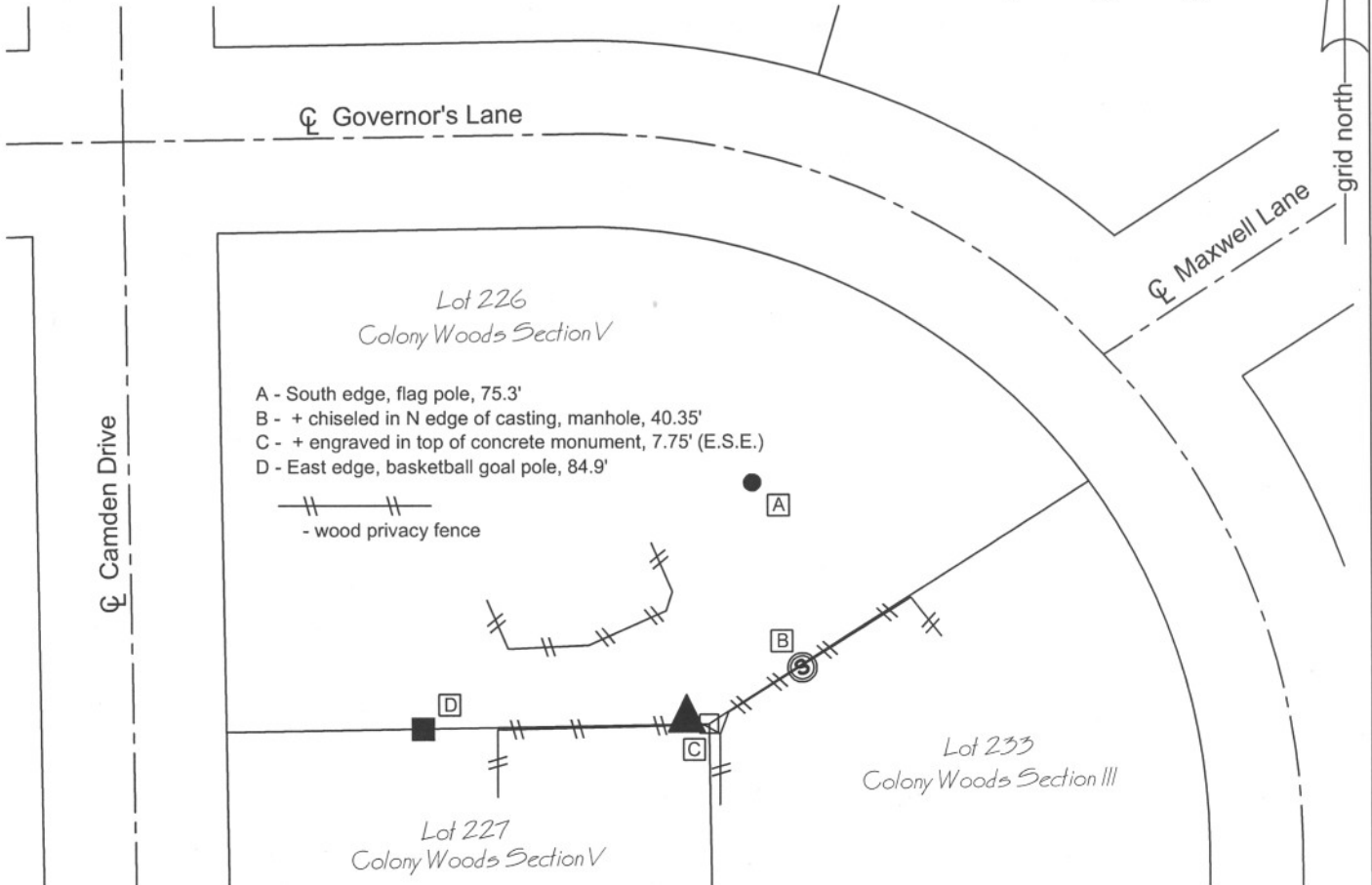
State Plane grid coordinates NAD83 (NSRS 2007):
 North: 1720489.92 East: 3178195.42 (U.S. survey feet)

Indiana tie card references:
 IN02_T18NR2E26_72 IN02_T18NR2E27_80
 IN02_T18NR2E34_08 IN02_T18NR2E35_00

Type of monument: Harrison, 4" disk 'Section Corner'
 Depth: 4 inches above adjacent grade in concrete pillar

CORNER WITNESS DETAIL

SCALE 1" = 60'



The Harrison monument was set over a railroad rail found. No entries were found for this corner in the BCS stone record, nor were any BCS tie cards found. This corner falls within lot 227 of Colony Woods subdivision, Section V (Plat Book 6, page 22). The location of the corner relative to the platted lots is more clearly shown on the plat of Colony Woods subdivision, Section III (Plat Book 6, page 9). Most recorded surveys referencing this corner state that the location was reconstructed from the geometry of the plats. A railroad rail on end was found, approximately 4 inches deep, at the location shown on the plat. The position of the railroad rail fits precisely with the plat geometry as reconstructed from centerline control monuments in Governor's Lane. It is known that railroad rails were set by this office and by Anderson and Associates Surveyors in the late 1960s and early 1970s. The plats were recorded in the late 1970s. No other evidence of the section corner was found. The railroad rail was held as marking the corner and the Harrison monument was set directly over the top of the center of the neck of the rail. This corner was originally established as a wood post in July, 1821.

Eagle Township



Kenneth E. Hedge
 Kenneth E. Hedge, County Surveyor

James S. Swift
 James S. Swift, IN LS 20200054

March 11, 2009

Section 27 T18N, R2E	Section 26 T18N, R2E
Section 34 T18N, R2E	Section 35 T18N, R2E

PHOTOGRAPHIC DOCUMENTATION

Date of photography: October 9, 2008

View of railroad rail (section corner) and concrete monument (subdivision corner) from northwest.



For details and documentation, refer to related sheet "Section Corner Record."

SECTION CORNER RECORD

SE 500-1100

BOONE COUNTY SURVEYOR'S OFFICE

State Plane grid coordinates NAD83 (NSRS 2007):

North: 1720649.93 East: 3183531.59 (U.S. survey feet)

Type of monument: Harrison, 4" disk 'Section Corner'

Depth: One inch below adjacent road surface

Indiana tie card references:

IN02_T18NR2E25_72 IN02_T18NR2E26_80

IN02_T18NR2E35_08 IN02_T18NR2E36_00

CORNER WITNESS DETAIL

SCALE 1" = 40'



- A - Mag nail set in E. side power pole, 2.0' a.g., 15.4'
- B - Boone County witness mark, flush, 39.17'
- C - Mag nail set in N. side power pole, 2.0' a.g., 47.0'

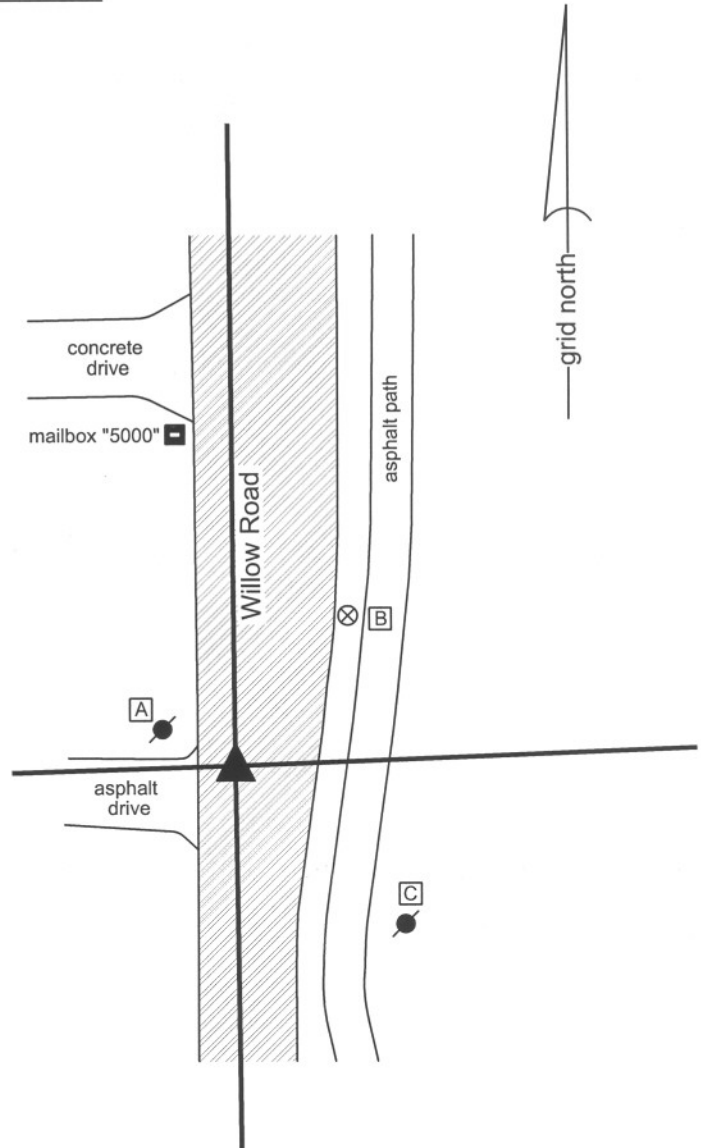
Boone County witness mark is a 3/8" diameter x 2' long rebar bearing a metal cap stamped "Boone County Witness Point."

The harrison monument was set in place of a railroad spike and iron pipe found.

No specific descriptions of this corner were found in the BCS Surveyor's Record, but it is mentioned as the terminal points for several measurements in 1834 and another measurement in 1859. A BCS tie card dated April 15, 1991 shows the corner as a railroad spike found. A BCS reference sheet dated June 15, 1989 shows the same. All known surveys and plats in this vicinity have held the railroad spike as the. This corner was monumented on July 30, 2009. Significant excavation was not performed as utility markings clearly indicate that a water main runs along the center of the Willow Road, adjacent to and immediately east of the corner. It is considered highly likely that any corner stone which may have existed at this corner would have been obliterated during the installation of the water main.

Prior to monumentation, a railroad spike was found in a hole in the asphalt approximately 3 inches below grade. A 1 inch diameter iron pipe was found directly below the railroad spike. No other evidence was found. The harrison monument was set in place of the railroad spike and iron pipe.

This corner was originally established as a wood post in July, 1821.



Kenneth E. Hedge
Kenneth E. Hedge, County Surveyor

James S. Swift
James S. Swift, IN LS 20200054

July 14, 2010

Eagle Township

Section 26 T18N, R2E	Section 25 T18N, R2E
Section 35 T18N, R2E	Section 36 T18N, R2E