

SECTION CORNER RECORD

NE 700-000

BOONE COUNTY SURVEYOR'S OFFICE

State Plane grid coordinates NAD83 (2011) (U.S. survey feet):

Corner 1: North: 1782576.48 East: 3124788.34

Corner 2: North: 1782610.80 East: 3124788.12

Type of monuments: Harrison, 4" disk 'Section Corner'

Depth: Flush with surrounding ground

Indiana tie card references:

IN02_T20NR1W36_08 IN02_T20NR1E31_00

IN02_T20NR1W25_80 IN02_T20NR1E30_72

The Harrison monument at Corner 1 was set in place of a stone found. The Harrison monument at Corner 2 was set at a calculated position, 52 links north of Corner 1.

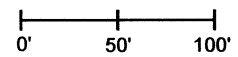
No specific descriptions of either of these corners were found in the BCS Surveyor's Record beyond the original establishment of Corner 1 as a wood post in 1819 and Corner 2 as a wood post set 52 links north of Corner 1 in 1822. Corner 1 is listed as the terminal point for measurements in an entry dated 1879. Corner 2 is listed as the terminal point for measurements in an entry from 1834.

No BCS tie cards were found referencing these corners. Corner 1 is shown as a "Head Post" on a survey recorded as Miscellaneous Record 125, pages 23-25, December 13, 1991, in the Office of the Boone County Recorder. The deeds for the adjacent land to the northwest (Warren, Instrument 201000010173) and the land to the north of that (Metzger, Deed Record 254, page 688) both call for a distance of 921.70 feet from the southeast corner of Section 25 (Corner 1) to the common corner of those properties.

Reconnaissance and computations were performed at and with respect to these corners over the course of several years. During recon, a t-post was visible in the vicinity of Corner 2 and wire fencing was readily detectable underground, but no wood posts or standing fence was visible in the immediate vicinity of these corners. After careful analysis, it was concluded that the most reliable accessory evidence of these corners is a wood corner post with iron pipe at the south edge thereof, marking the apparent corner between Warren and Metzger, as discussed above. Excavation at a point 921.7 feet south of this evidence revealed substantial evidence of north-south wire fencing found buried in the ground in a north-south grass strip, several rocks and some evidence of fencing to the west, indicating the presence of an old, occupied corner. The base of the actual head post was not found and appears to have been extracted rather than broken-off. A stone found at 921.7 feet south of the corner post to the north provided the most reliable physical evidence of Corner 1. This stone measured 13 inches N-S by 9 inches E-W by 7 inches tall, with no specific marks detected. The top, center point of the stone was held as the position of the corner. The stone was removed and a Harrison monument was set in place of it. No rocks were found in the immediate vicinity of Corner 2, though substantial evidence of north-south wire fencing was found in the ground. The position of this corner was computed on the meridian line as defined by Corner 1 and the east quarter corner of Section 25 (See BCS Corner NW 750-000) at the federal closing distance of 52 links. This position fell approximately 1 foot east and 1.75 feet south of the t-post previously noted. It is noted that by holding the positions as monumented and computing the position of the east quarter corner of Section 36 and the west quarter corner of Section 31 at midpoints of the lines connecting the section corners with the township corner to the south, substantial evidence of those corners was found (see BCS Corners NE and NW 650-000), providing collateral evidence to support the positions of the corners as documented by this record sheet.

CORNER WITNESS DETAIL

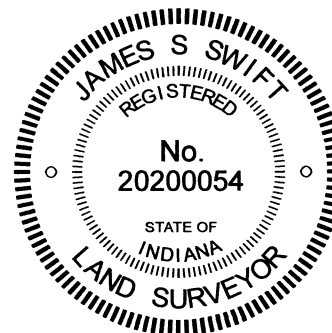
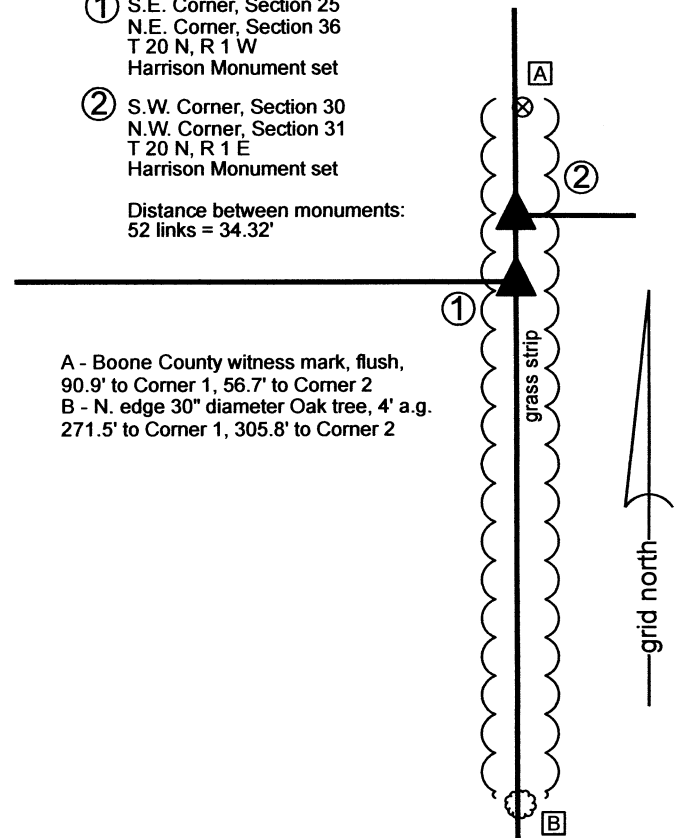
SCALE 1" = 100'



① S.E. Corner, Section 25
N.E. Corner, Section 36
T 20 N, R 1 W
Harrison Monument set

② S.W. Corner, Section 30
N.W. Corner, Section 31
T 20 N, R 1 E
Harrison Monument set

Distance between monuments:
52 links = 34.32'



Washington Township Clinton Township

Section 25 T20N, R1W	Section 30 T20N, R1E
Section 36 T20N, R1W	Section 31 T20N, R1E

Carol Cunningham

Carol Cunningham, County Surveyor

James S. Swift

James S. Swift, IN LS 20200054 4/26/2023

SECTION CORNER RECORD

NW 700-100

BOONE COUNTY SURVEYOR'S OFFICE

State Plane grid coordinates NAD83 (2011):

North: 1782580.28 East: 3119523.24 (U.S. survey feet)

Type of monument: 24" length of 5/8" diameter rebar with aluminum cap stamped 'Boone County Surveyor'

Depth: Fourteen inches below surrounding ground

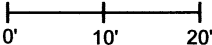
Indiana tie card references:

IN02_T20NR1W26_80 IN02_T20NR1W25_72

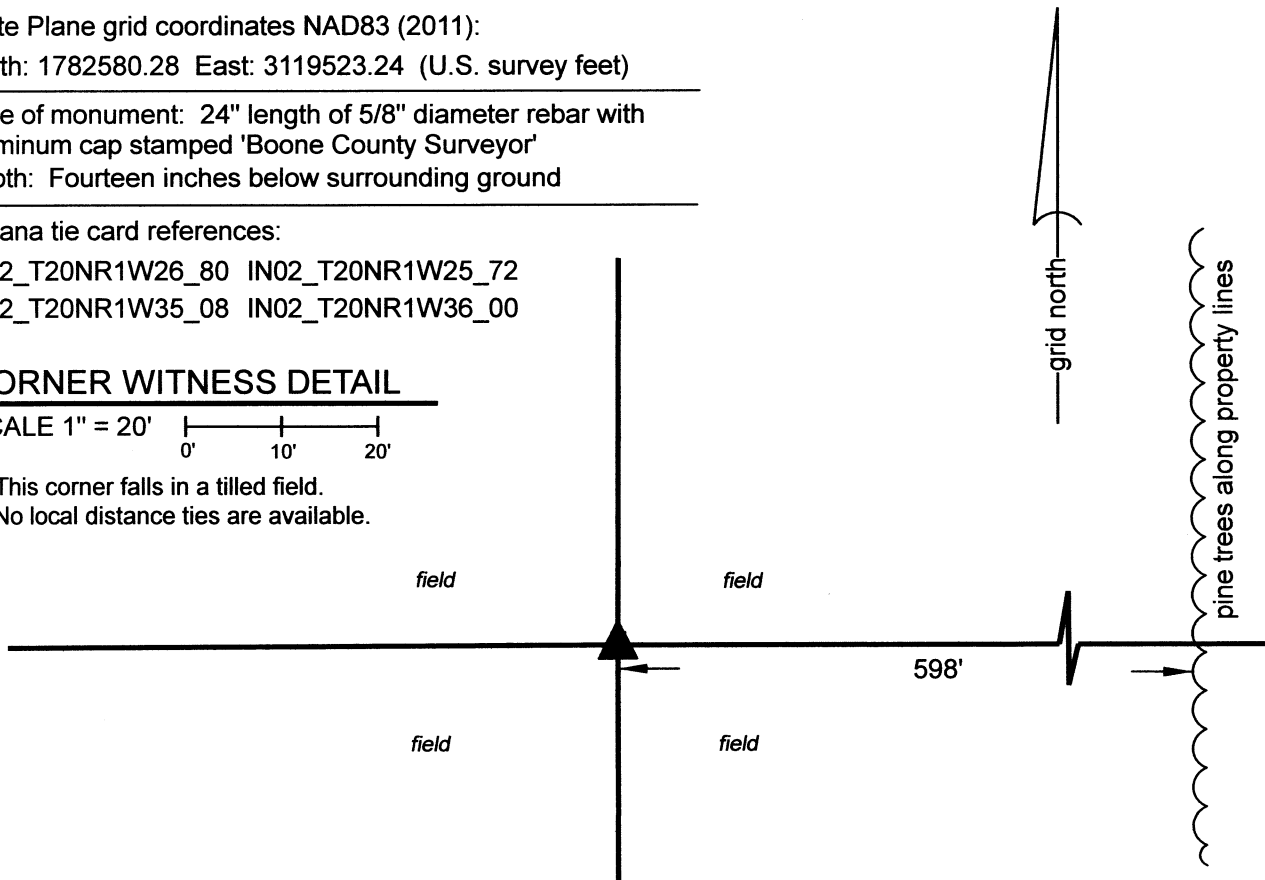
IN02_T20NR1W35_08 IN02_T20NR1W36_00

CORNER WITNESS DETAIL

SCALE 1" = 20'



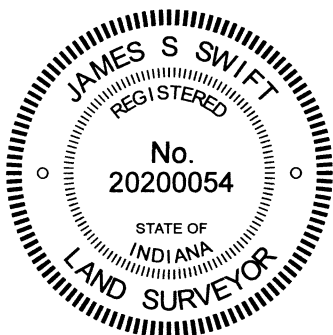
This corner falls in a tilled field.
No local distance ties are available.



The rebar with Boone County cap was set at a position computed with respect to iron pipes found marking the corners of several properties to the east and the deed calls to those pipes.

No specific descriptions of this corner were found in the BCS Surveyor's Record beyond the original establishment of the corner as a wood post in 1822. No surveys recorded in the Office of the Boone County Recorder were found referencing the corner.

The deeds for the properties to the east (see Batts, Instrument 9911496, Mitscher, Instrument 9904589, and Batts to Mitscher, Instrument 201300001051) call for iron pipes as referenced to the subject corner. The calls are in cardinal directions for the older of the deeds and in more specific bearings for the 2013 deed. Eight pipes called for in the descriptions were found marking the various property corners. The position of the subject corner was established with respect to the deed calls for the iron pipes. Specifically, the tie point for the deed calls was established on the line connecting the iron pipes found marking the northwest and southwest corners of the Mitscher property as described in Instrument 9904589, at a point 234.03 feet (deed distance) south of the pipe marking said northwest corner. The position of the subject corner was established on a line extended west 598 feet (deed distance) from said tie point, said line being held as parallel with the line connecting the pipe found at Mitscher's northwest corner and a pipe found witnessing the northeast corner, along the right-of-way of State Road 39. Uncertainties of up to 0.3 feet in all directions are attributed to the relative positions of the pipes held with respect to other pipes found marking deed corners. The subject corner falls amidst a tilled field and no above-ground evidence was observed in the immediate vicinity of the corner. Manual excavation and probing in the vicinity of the computed corner did not reveal any corner stones or other monuments but did reveal substantial evidence of an old fence corner in the form of numerous fragments of fencing found in the ground, evidently in all four directions, and several small rocks. This position for the corner also works reasonably well with the relative position of a wood post marking the apparent northwest corner of the east half of the northwest quarter of Section 35. A 24-inch length of 5/8-inch diameter rebar was set at the computed position, 14 inches deep in the tilled field, on April 4, 2023.



Carol Cunningham
Carol Cunningham, County Surveyor

James S. Swift
James S. Swift, IN LS 20200054
April 26, 2023

Washington Township

Section 26 T20N, R1W	Section 25 T20N, R1W
Section 35 T20N, R1W	Section 36 T20N, R1W

SECTION CORNER RECORD

NW 750-000

BOONE COUNTY SURVEYOR'S OFFICE

State Plane grid coordinates NAD83 (2011):

Corner 1: North: 1785207.62 East: 3124770.96 (U.S. survey feet)

Corner 2: North: 1785229.59 East: 3124771.09 (U.S. survey feet)

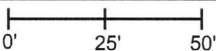
Type of monument: Harrison, 4" disk 'Section Corner'

Depth: Flush (corner 2) Four inches below adjacent road surface (corner 1)

Indiana tie card references:

IN02_T20NR1W25_36 IN02_T20NR1E30_44

CORNER WITNESS DETAIL

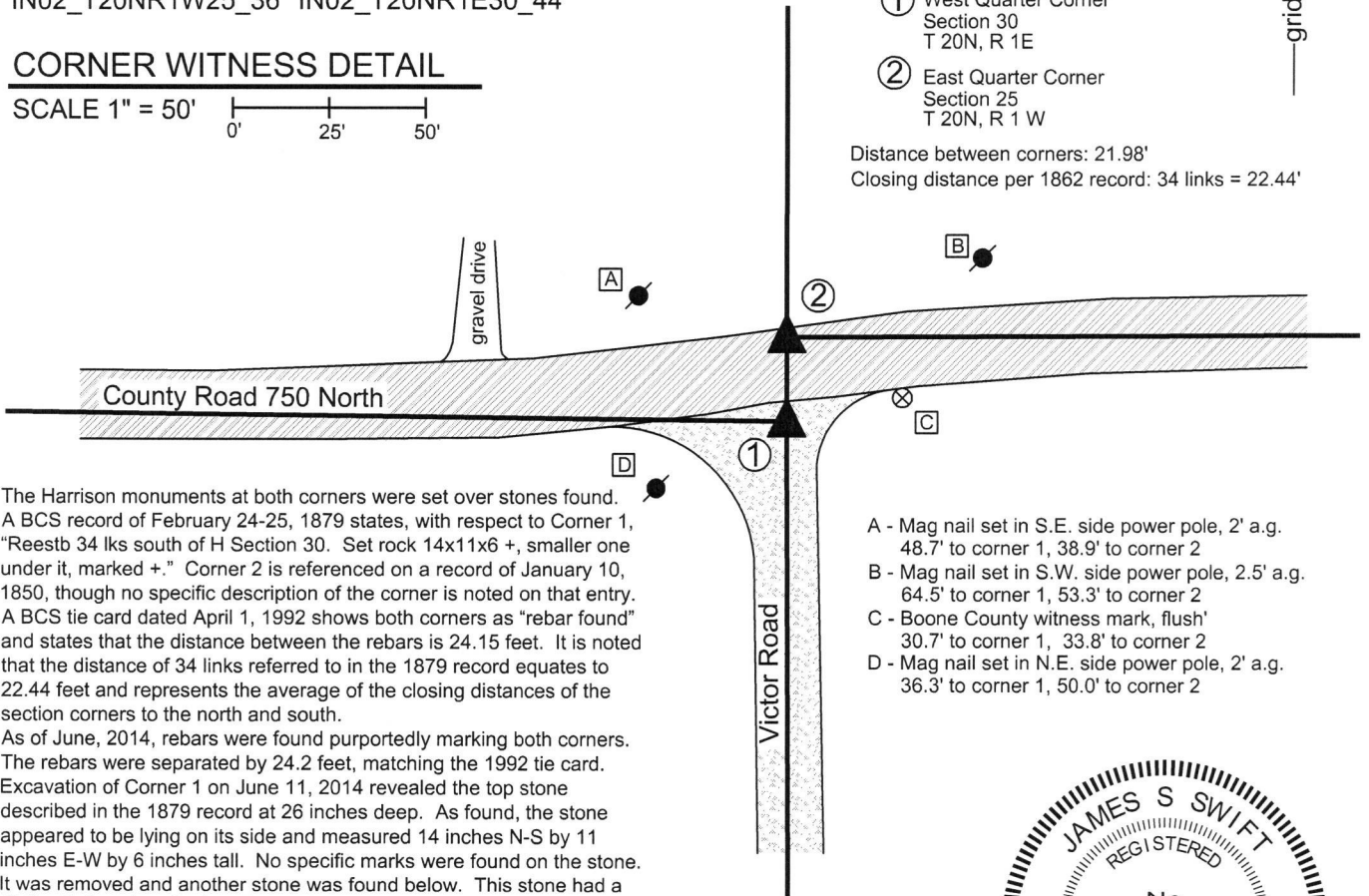
SCALE 1" = 50' 

① West Quarter Corner
Section 30
T 20N, R 1E

② East Quarter Corner
Section 25
T 20N, R 1W

Distance between corners: 21.98'

Closing distance per 1862 record: 34 links = 22.44'

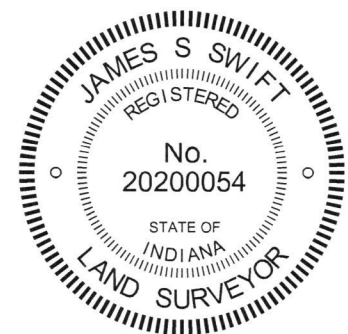


The Harrison monuments at both corners were set over stones found. A BCS record of February 24-25, 1879 states, with respect to Corner 1, "Reestb 34 lks south of H Section 30. Set rock 14x11x6 +, smaller one under it, marked +." Corner 2 is referenced on a record of January 10, 1850, though no specific description of the corner is noted on that entry. A BCS tie card dated April 1, 1992 shows both corners as "rebar found" and states that the distance between the rebars is 24.15 feet. It is noted that the distance of 34 links referred to in the 1879 record equates to 22.44 feet and represents the average of the closing distances of the section corners to the north and south.


As of June, 2014, rebars were found purportedly marking both corners. The rebars were separated by 24.2 feet, matching the 1992 tie card. Excavation of Corner 1 on June 11, 2014 revealed the top stone described in the 1879 record at 26 inches deep. As found, the stone appeared to be lying on its side and measured 14 inches N-S by 11 inches E-W by 6 inches tall. No specific marks were found on the stone. It was removed and another stone was found below. This stone had a distinct "+" mark etched on the north, sloping side of the rock, which measured 7 inches E-W by 8 inches N-S with the top 3 inches exposed. The two stones were accepted as being the same monuments described in the 1879 record. The top stone was removed and a Harrison monument was set directly above the top, high point of the lower stone, slightly south of the etched "+" mark. The rebar, removed during excavation, had been 1.8 feet north and 1.2 feet west of this point. Excavation of Corner 2 on April 14, 2016 revealed a stone found at 7 inches deep. With 5 inches of the top of the stone exposed, it measured 5 inches N-S by 8 inches E-W. The stone was embedded in the clay layer below the road, protruding approximately 3 inches into the bottom of the road bed. The stone does have a distinct top, high point but no marks were found etched on the stone. The top, high point of the stone was slightly closer to top, high point of the lower stone found at Corner 1 than called for in the 1879 record, though the whole physical rocks were within the same 34 link distance called for in that record. This stone was held as marking Corner 2 and a Harrison Monument was set over the top, high point of the stone. This point falls along or very close to the Second Principal Meridian, as defined by the stone at Corner 1 and a wood post at the standard corner 1/2 mile north. The rebar, removed during excavation, had been 3.0 feet north and 0.6 foot west of the point held as the corner.

Corner 1 was originally established as a wood post in 1819. Corner 2 is not an original federal corner.

- A - Mag nail set in S.E. side power pole, 2' a.g. 48.7' to corner 1, 38.9' to corner 2
- B - Mag nail set in S.W. side power pole, 2.5' a.g. 64.5' to corner 1, 53.3' to corner 2
- C - Boone County witness mark, flush' 30.7' to corner 1, 33.8' to corner 2
- D - Mag nail set in N.E. side power pole, 2' a.g. 36.3' to corner 1, 50.0' to corner 2




Kenneth E. Hedge, County Surveyor


James S. Swift, IN LS 20200054
March 23, 2017

Washington Township	Clinton Township
Section 25 T20N, R1W	Section 30 T20N, R1E



SECTION CORNER RECORD

NW 750-100

BOONE COUNTY SURVEYOR'S OFFICE

State Plane grid coordinates NAD83 (2011):

North: 1785258.25 East: 3119525.08 (U.S. survey feet)

Type of monument: Harrison, 4" disk 'Section Corner'

Depth: Four inches above surrounding ground

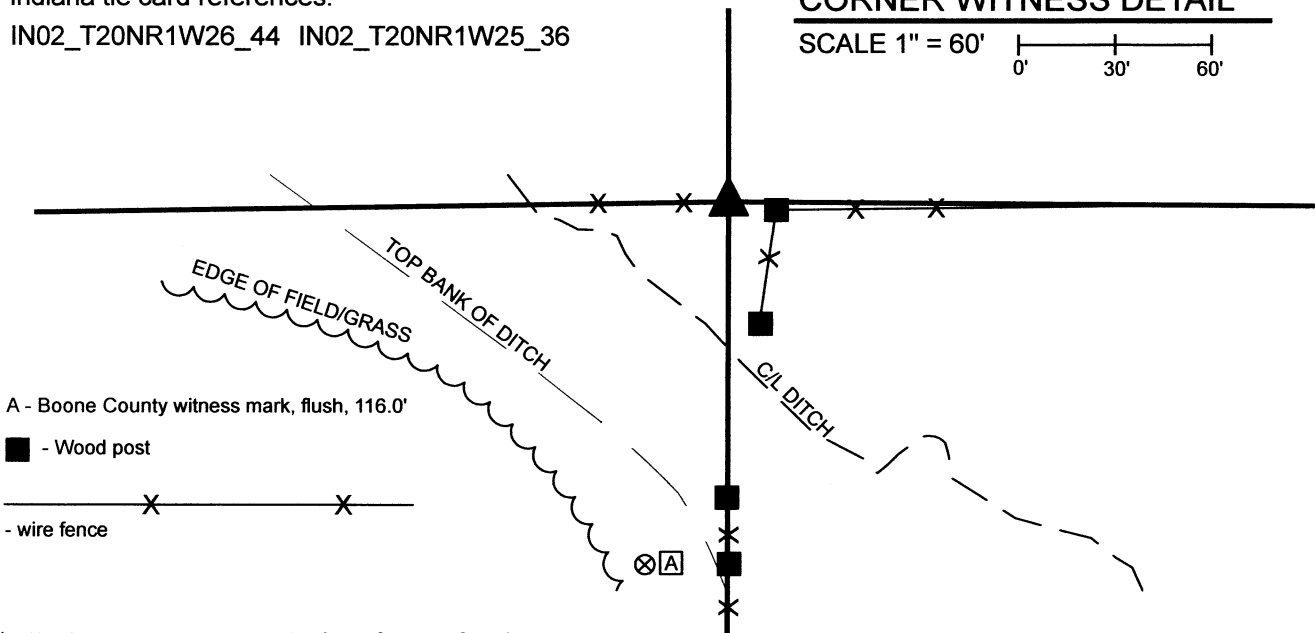
Indiana tie card references:

IN02_T20NR1W26_44 IN02_T20NR1W25_36

CORNER WITNESS DETAIL

SCALE 1" = 60'

0' 30' 60'



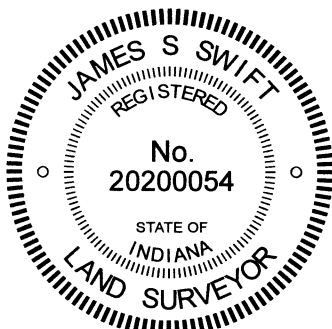
The Harrison monument was set in place of a stone found.

A BCS record of March 3, 1860 states, with respect to this corner, "Reest'd from the original trees. Found blaze and notch in closest Beech & stump of the other." A subsequent record, dated August 21, 1893 states, "Rock and bearing trees here as above. Marked rock +."

No recent BCS tie cards nor surveys recorded in the Office of the Boone County Recorder were found referencing this corner. The corner is referenced on the deed to a nearby property to the southeast (see Culbertson, Instrument 200403696, 2.3221-acre parcel and easement).

Reconnaissance was performed at this corner several times over the previous several years, culminating in excavation on April 12, 2023. No artificial survey monuments were observed at the corner. The corner falls slightly north of a creek, down a hill from the overall land to the south. A large, old, round wood post was found at the east end of a fence to the west. This post was not in-line with fencing to the south in the immediate vicinity of the corner, but was generally in-line with the longer fence to the south, beginning at the post on the top of the hill, approximately 93 feet south. An old post to the east, found on the ground, was approximately 2 feet south and 12 feet east. On first sight, it was not clear if the round post was really an old post or was simply an old tree with fencing wrapped around it. On closer inspection, however, it was observed that the post is cedar and that the wood brace attached to the west side was also cedar, indicating a post, not tree. Several rocks were observed in the immediate vicinity of the post. A large stone on the west side of the post was clearly the most notable potential corner stone. As originally found, this rock was situated under the wire which wrapped around the post and extended to the west. The stone was not deeply embedded in the ground, but being situated under the ancient fencing and under the cedar brace, must have been present in its current orientation and position for a long time. It was also observed that the post on the top of the hill (being the northern most post in the old north-south fence prior to descending over the hill) falls precisely along a line from the southeast corner of Section 26 (see BCS Corner NW 700-100) to the found rock, and that other fencing found to the south falls along the line or less than one foot to the east. It was also observed the wood corner post marking evidence of occupation at the northwest corner of the aforementioned Culbertson parcel fits with the position of the found stone, per the record tie to the section corner, within 0.5 foot in all directions. The BCS record does not call for a specific size for the stone held in the 1800s. The found stone was 12 inches tall by 14 inches E-W by 8 inches N-S. Several possible marks were observed on the surface of the stone, though none could be positively identified as a '+' mark of the type typically etched by Boone County Surveyors in the 1800s. The distinct high point of the stone was held as the specific position of the corner. The post, being rotted at the base, was shifted slightly to the north and the fencing over the stone displaced sufficiently to remove the stone and replace it with a Harrison monument in the same position. The Harrison monument was set on April 12, 2023.

This corner was originally established as a wood post in 1822.



Carol Cunningham
Carol Cunningham, County Surveyor

James S. Swift
James S. Swift, IN LS 20200054
April 26, 2023

Washington Township

Section 26 T20N, R1W	Section 25 T20N, R1W
-------------------------	-------------------------

SECTION CORNER RECORD

NW 800-000

BOONE COUNTY SURVEYOR'S OFFICE

State Plane grid coordinates NAD83 (2011):

Corner 1: North: 1787860.94 East: 3124774.64 (U.S. survey feet)

Corner 2: North: 1787871.50 East: 3124774.61 (U.S. survey feet)

Corner 1: Harrison, 4" disk 'Section Corner', 6" a.g.

Corner 2: 5/8" rebar with metal cap stamped 'Boone County Surveyor' 4" a.g.

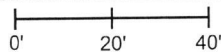
Indiana tie card references:

IN02_T20NR1W24_80 IN02_T20NR1E19_72

IN02_T20NR1W25_08 IN02_T20NR1E30_00

CORNER WITNESS DETAIL

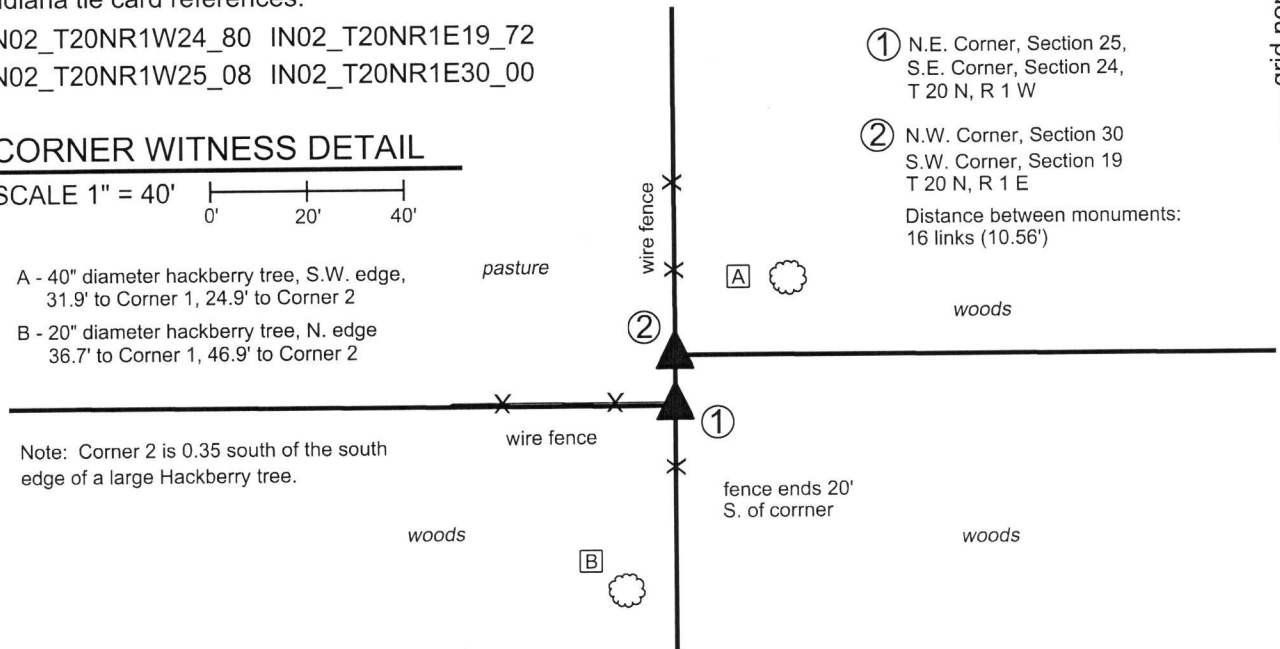
SCALE 1" = 40'



A - 40" diameter hackberry tree, S.W. edge, 31.9' to Corner 1, 24.9' to Corner 2

B - 20" diameter hackberry tree, N. edge 36.7' to Corner 1, 46.9' to Corner 2

Note: Corner 2 is 0.35 south of the south edge of a large Hackberry tree.



① N.E. Corner, Section 25, S.E. Corner, Section 24, T 20 N, R 1 W

② N.W. Corner, Section 30 S.W. Corner, Section 19 T 20 N, R 1 E

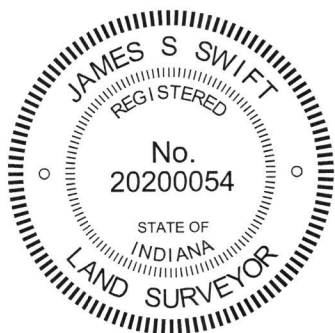
Distance between monuments: 16 links (10.56')

The Harrison monument was set in place of a stone found.

No specific descriptions of these corners were found in the BCS Surveyor's Record beyond the original establishment of the Corner 1 as a wood post set in 1819 and Corner 2 as a wood post set 16 links north of Corner 1 in 1822. No recent BCS tie cards were found nor were any surveys found in the Boone County Recorder's Office which reference the corners.

This corner was excavated on April 26 and May 8, 2019. Prior to excavation, a wood corner post was found at the intersection of ancient fences to the north, south and west, representing the visible evidence of Corner 1. No evidence of Corner 2 was visible beyond the fence bearing north from Corner 1. As found, the post was no longer attached to the ground with the top part of the post suspended amidst standing fencing and supported by a brace to the west. This portion of the post was separated from the base which remains in the ground. Excavation around the post revealed a stone which bore the characteristics of a purposely set corner stone found at the south edge of the post. The stone was slightly below flush. It was vertical and oriented in cardinal directions with a distinct high point. The stone measured 9 inches tall by 7 inches north-south by 5 inches east-west. No specific marks or etchings were found on the stone. No other stones or hard objects were found around the post. The position of the stone fits reasonably well with the relative positions of proximate corners. The adjacent deed descriptions call for the aliquot lines. No evidence was found to indicate that the stone was not in the position of the corner and the stone was accepted as the best available evidence of the corner. The stone was removed and replaced with a Harrison monument in the same position on May 8, 2019.

The position of Corner 2 was computed at 16 links north of the stone, on the line defined by Corner 1 and the standard corner 1/2 mile north (see BCS Corner NW-850-000). This position falls at the south edge of a large hackberry tree. Probing and minor excavation in this vicinity revealed no further evidence of the corner. As note above, no evidence of occupation was observed bearing east from the vicinity of Corner 2. The computed position was held for this corner and a 36 inch length of 5/8 inch diameter rebar with a metal cap stamped 'Boone County Surveyor' was set at this position on May 8, 2019.



Kenneth E. Hedge
Kenneth E. Hedge, County Surveyor

James S. Swift
James S. Swift, IN LS 20200054
May 29, 2019

Washington Township Clinton Township

Section 24 T20N, R1W	Section 19 T20N, R1E
Section 25 T20N, R1W	Section 30 T20N, R1E

SECTION CORNER RECORD

NW 800-050

BOONE COUNTY SURVEYOR'S OFFICE

State Plane grid coordinates NAD83 (2011):

North: 1787873.03 East: 3122138.15 (U.S. survey feet)

Type of monument: Mag Spike with washer stamped
'Boone County Surveyor' anchored to concrete bridge deck.

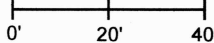
Depth: Six inches below gravel road surface

Indiana tie card references:

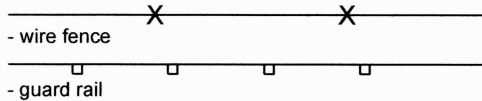
IN02_T20NR1W24_76 IN02_T20NR1W25_04

CORNER WITNESS DETAIL

SCALE 1" = 40'



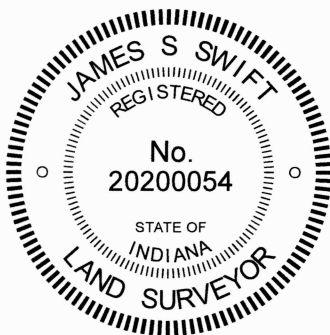
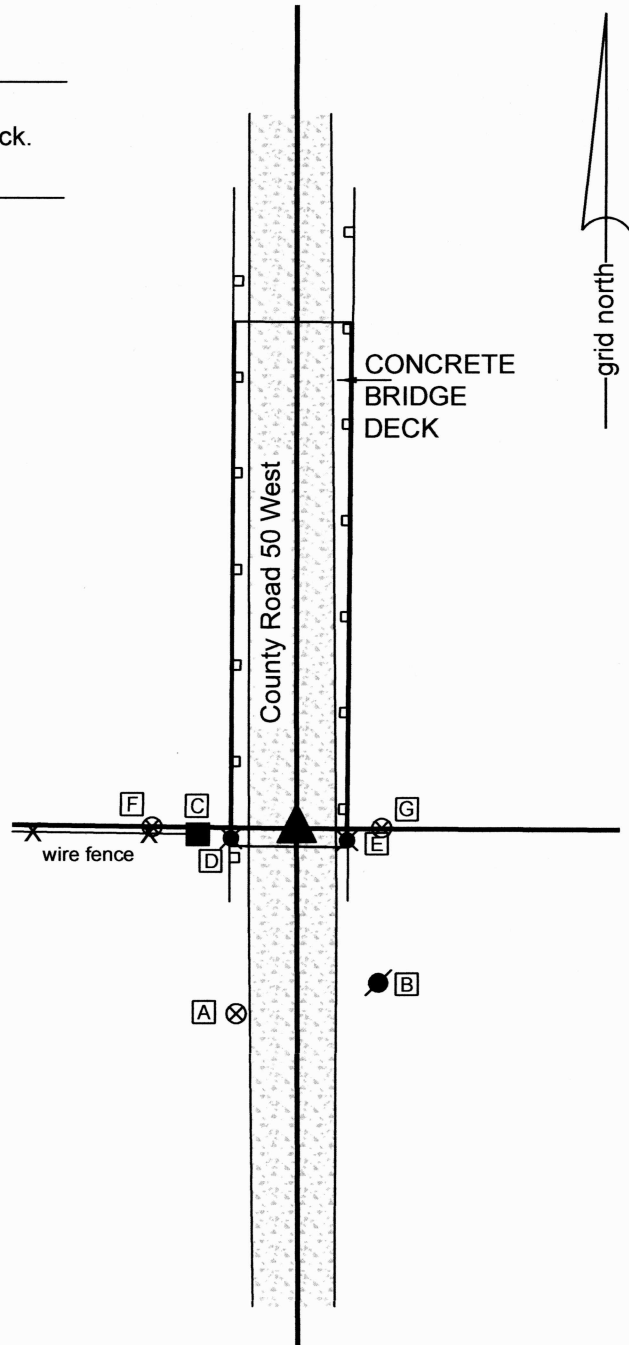
- A - Boone County witness mark, flush, 40.5'
- B - Mag nail set in W. side power pole, 2' a.g., 36.4'
- C - Mag nail set in E. side wood corner post, 2' a.g., 20.6'
- D - X carved in bolt on east side of guardrail, 13.8'
- E - X carved in bolt on west side of guardrail, 10.7'
- F - 5/8" rebar found, 30.0'
- G - 5/8" rebar found, 17.7'



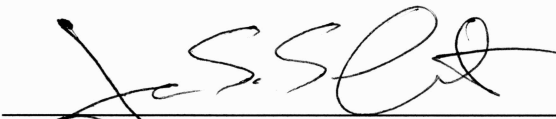
The Mag Spike with washer was set in-line with found monuments. This corner falls in a concrete bridge deck. No monument was found marking the corner and no plans for the bridge are known to be on file with the Boone County Surveyor's Office. No possibility of ancient evidence exists, due to the presence of the bridge. A stone was either set or found at this corner per a BCS Record of November 28, 1885. Rebars were found on both sides of the road, evidently marking the east-west section lines. The rebar on the west side of the road bears the cap of Cruse Consulting. This rebar is shown on the plat of the Buckingham Pond Minor Plat (P.B. 18, Pg. 36) as being 30 feet west of the corner. The rebar is slightly north of the existing east-west fence, though it is noted that the fence does not appear to be ancient. The rebar appears to have been set in-line with the rebar found on the east side of the road.

The position of the corner was established on the easterly prolongation of the line connecting the northwest corner of Section 25 (see BCS Corner NW 800-100) and the Cruse rebar at a point 30 feet east of the rebar. This position falls in the approximate center of County Road 50 West. The entire bridge is covered with gravel, though a concrete deck is underneath the gravel. The corner was monumented on November 20, 2023 with a Mag Spike set anchored to the concrete bridge deck with epoxy, 6 inches below the top of the gravel road surface.

This corner was originally established as a wood post in 1822.




Carol Cunningham, County Surveyor


James S. Swift, IN LS 20200054
November 28, 2023

Washington
Township

Section 24
T20N, R1W

Section 25
T20N, R1W

SECTION CORNER RECORD

NW 800-100

BOONE COUNTY SURVEYOR'S OFFICE

State Plane grid coordinates NAD83 (CORSS96):

North: 1787910.37 East: 3119517.40 (U.S. survey feet)

Type of monument: Harrison, 4" disk 'Section Corner'

Depth: One inch below adjacent road surface

Indiana tie card references:

IN02_T20NR1W23_80 IN02_T20NR1W24_72

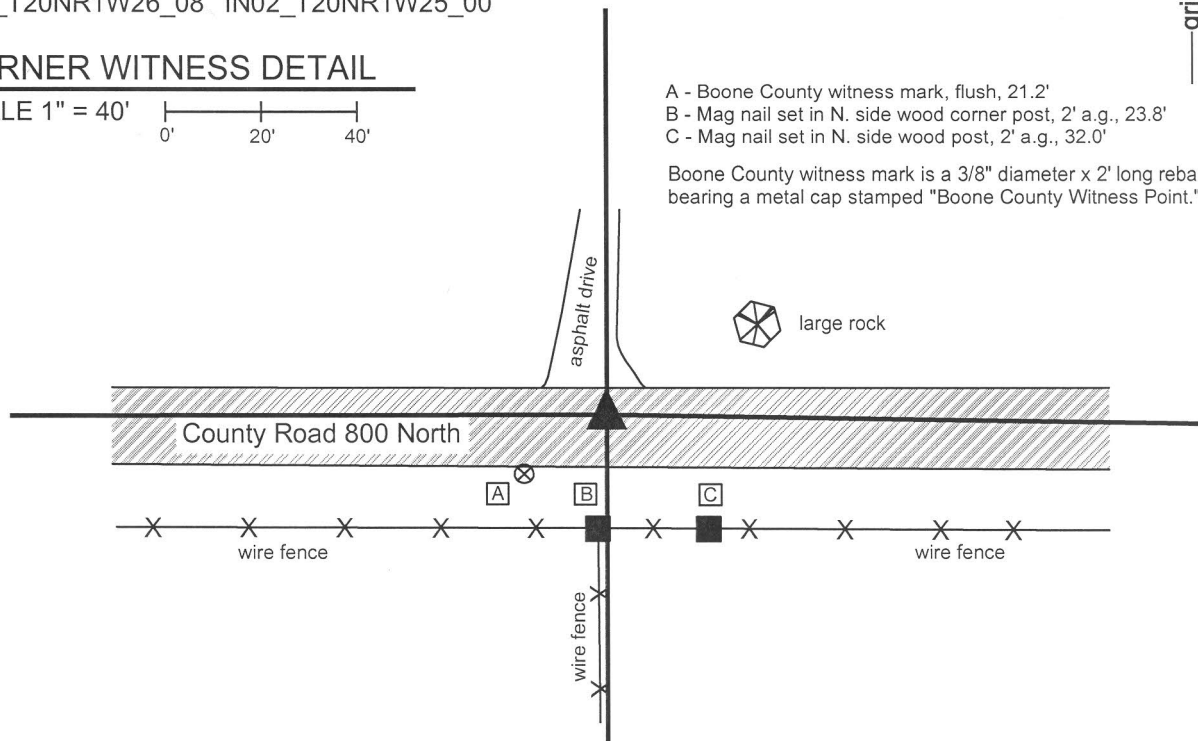
IN02_T20NR1W26_08 IN02_T20NR1W25_00

CORNER WITNESS DETAIL

SCALE 1" = 40'

- A - Boone County witness mark, flush, 21.2'
- B - Mag nail set in N. side wood corner post, 2' a.g., 23.8'
- C - Mag nail set in N. side wood post, 2' a.g., 32.0'

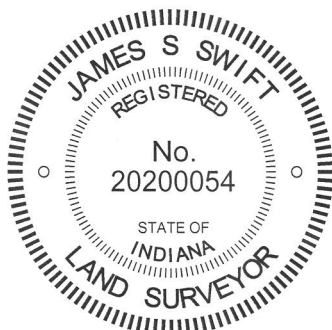
Boone County witness mark is a 3/8" diameter x 2' long rebar bearing a metal cap stamped "Boone County Witness Point."



The Harrison monument was set in place of a railroad spike found.

A BCS record of August 25th 1859 states, with respect to this corner, "Rock from which another Rock 48 [links], N 28 1/2° E, 60 [links]." A BCS record of August 21, 1893 states "witness rock here." No recent BCS tie cards were found referencing this corner.

Excavation was performed at this corner on June 16, 2014. Prior to excavation, a railroad spike was found at the surface of the road, slightly north of the physical center of the road. A large rock was nearby, at approximately 60 links distance. The azimuth from the railroad spike to the rock was more like 58 degrees, than 28 degrees. This rock did not bear the characteristics of a "witness stone." Excavation of an area extending 2 feet north, 2 feet east, 4.5 feet south and 4.5 feet west of the railroad spike yielded no further evidence of the corner. Excavation was performed in an area sufficiently large to include the center of the road at the approximate intersection of the fence to the south and the center of the road at 60 links distance from the aforementioned large rock. The bottom of the road bed is at approximately 1 foot, under which a grey clay layer exists to about 16 inches. From 16 inches and deeper, a brown clay exists. Excavation was performed to at least 20 inches deep. The source of the railroad spike is not known and no explanation is offered as to why the stone which was known to exist in 1859 and 1893 was not found. The railroad spike fits with with adjacent section corners, is called for as marking the corner for some adjoining properties and is believed to represent the position of the corner from which other adjacent properties were described. It is noted that a position being S28°W, 60 links from the aforementioned large rock would fall well south of the roadway and would not fit with any of the local evidence of the corner. As no contrary evidence was found, the railroad spike was held as marking the corner. The railroad spike was removed during excavation and replaced with a Harrison monument set in the same position. This corner was originally established as a wood post in 1822.



Kenneth E. Hedge
 Kenneth E. Hedge, County Surveyor

James S. Swift
 James S. Swift, IN LS 20200054
 March 27, 2015

Washington Township

