

# SECTION CORNER RECORD

NW 100-600

## BOONE COUNTY SURVEYOR'S OFFICE

State Plane grid coordinates NAD83 (2011) U.S. Survey feet:

Corner 1: North: 1750828.27 East: 3093116.03

Corner 2: North: 1750797.91 East: 3093116.12

Corner 1: Mag nail with washer, flush

Corner 2: INDOT Type B Monument

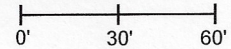
Indiana tie card references:

IN02\_T19NR2W25\_80 IN02\_T19NR1W30\_72

IN02\_T19NR2W36\_08 IN02\_T19NR1W31\_00

### CORNER WITNESS DETAIL

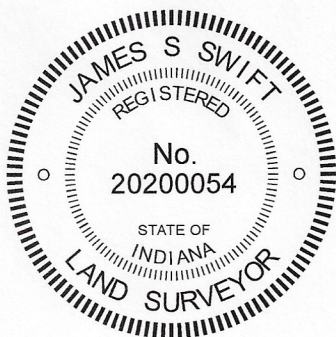
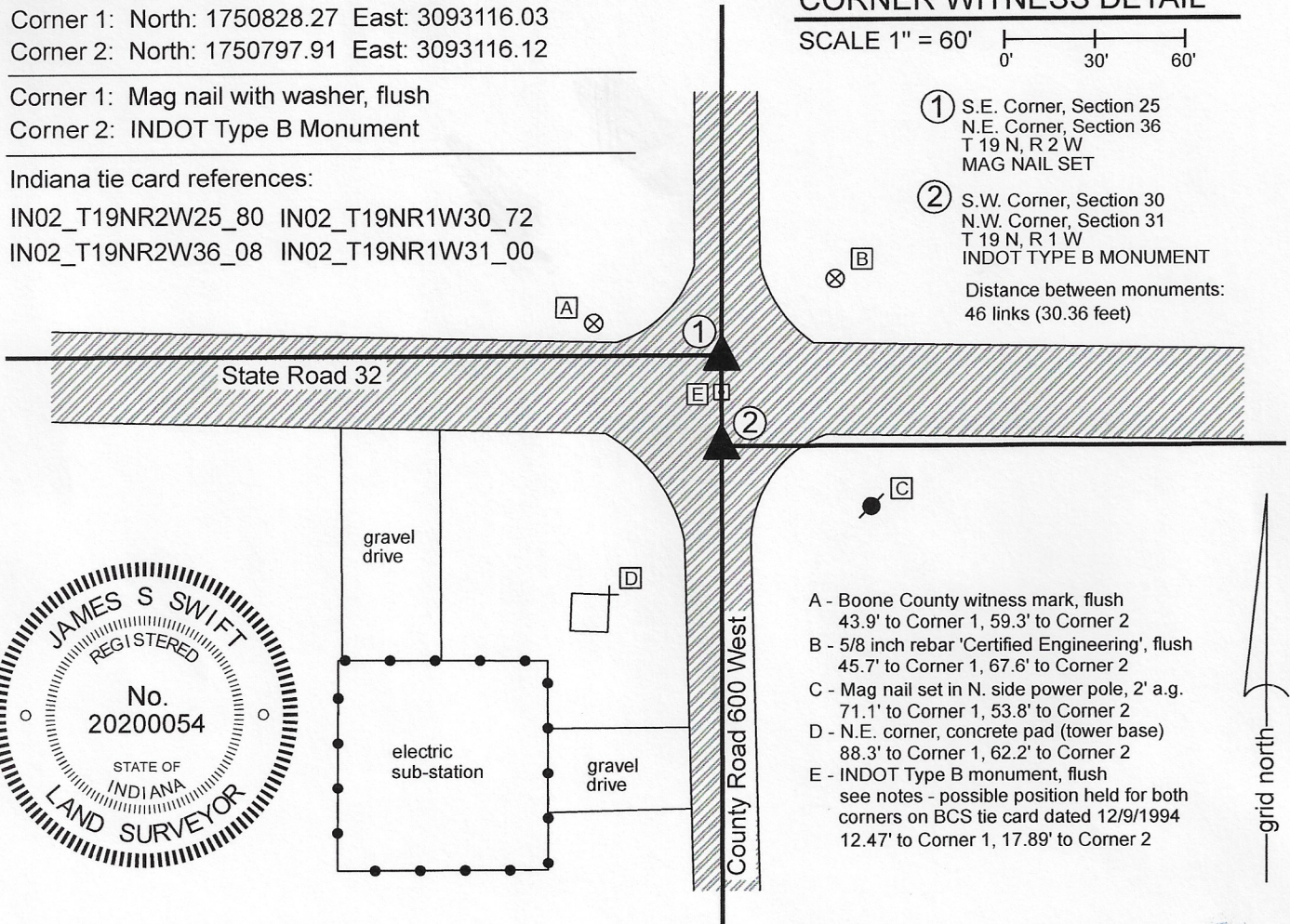
SCALE 1" = 60'



① S.E. Corner, Section 25  
N.E. Corner, Section 36  
T 19 N, R 2 W  
MAG NAIL SET

② S.W. Corner, Section 30  
N.W. Corner, Section 31  
T 19 N, R 1 W  
INDOT TYPE B MONUMENT

Distance between monuments:  
46 links (30.36 feet)



- A - Boone County witness mark, flush  
43.9' to Corner 1, 59.3' to Corner 2
- B - 5/8 inch rebar 'Certified Engineering', flush  
45.7' to Corner 1, 67.6' to Corner 2
- C - Mag nail set in N. side power pole, 2' a.g.  
71.1' to Corner 1, 53.8' to Corner 2
- D - N.E. corner, concrete pad (tower base)  
88.3' to Corner 1, 62.2' to Corner 2
- E - INDOT Type B monument, flush  
see notes - possible position held for both  
corners on BCS tie card dated 12/9/1994  
12.47' to Corner 1, 17.89' to Corner 2

The INDOT Type B monument was found and held as marking Corner 2. The Mag nail with washer "Boone County Surveyor" marking Corner 1 was set at the record federal closing distance of 46 links (30.36 feet) northerly of Corner 2.

The original federal notes of 1822 show the closing corner (Corner 2) as being 46 links south of the standard corner (Corner 1). A BCS record of September 4, 1865 states, with respect to Corner 1 and referencing Corner 2, "Reestablished by measuring the lap 46 links from the corner of Sects. 30 & 31. Set a Rock 12, 11, 7 marked." No specific descriptions of Corner 2 were found in the BCS Surveyor's Record beyond the original establishment of the corner in 1822. A BCS tie card dated December 9, 1994 shows Corner 1 as a P.K. Nail with washer. The sketch does not appear to take into account the 46 links offset at Corner 1 and demonstrates the corner to be at the center of the intersection of the two roads. Although the tie card states that the specific corner is the standard corner (Corner 1), the sketch demonstrates the section line bearing east and west from the corner with no offset.

Two INDOT Type B monuments were found at this intersection. Both monuments are referenced on a Survey Monument Replacement Surveyor's Report recorded as Instrument 200700005107 in the Office of the Boone County Recorder. The monuments are separated by 17.9 feet, significantly less than the original federal offset of 46 links (30.36 feet) which was confirmed by the 1865 record. Analysis of the relative positions of the found Type B monuments with adjacent corners in all cardinal directions, taking into account original federal dimensions and dimensions shown in the 1865 record clearly indicates that the southerly of the two monuments is in a reasonable position expected for Corner 2, but the northerly of the two monuments is south of the expected position for Corner 1. No uncertainty exists as to the offset, being 46 links or 30.36 feet.

Distance ties shown on the 1994 BCS tie card indicate that the northerly of the Type B monuments was likely set in the same position as the P.K. Nail shown on the 1994 tie card. As noted above, this tie card does not take into account the 46 links federal offset on the range line, treating the two separate corners as a common corner and is clearly in error on that count. No excavation was performed at these corners, as they both fall within the state highway. The southerly of the two Type B monuments was held as marking Corner 2. Corner 1 was established at 30.36 feet north thereof on the prolongation of the line connecting the east quarter corner of section 36 (see BCS Corner NW 050-600) with the monument held as marking Corner 2. A mag nail with washer stamped 'Boone County Surveyor' was set at this position on June 17, 2020. The Type B monument previously held as marking this corner is 12.5 feet south. Another mag nail, unknown origin, was found 16.1 feet north of Corner 2.

Corner 1 was originally established as a wood post in 1819. Corner 2 was established as a wood post in 1822.

### Jefferson Township

Section 25 T19N, R2W	Section 30 T19N, R1W
Section 36 T19N, R2W	Section 31 T19N, R1W

*Kenneth E. Hedge*  
Kenneth E. Hedge, County Surveyor

*James S. Swift*  
James S. Swift, IN LS 20200054 August 5, 2020



# SECTION CORNER RECORD

# NW 100-650

## BOONE COUNTY SURVEYOR'S OFFICE

State Plane grid coordinates NAD83 (2011):

North: 1750823.89 East: 3090473.07 (U.S. survey feet)

Type of monument: 5/8" Rebar with metal cap "Boone County Surveyor"

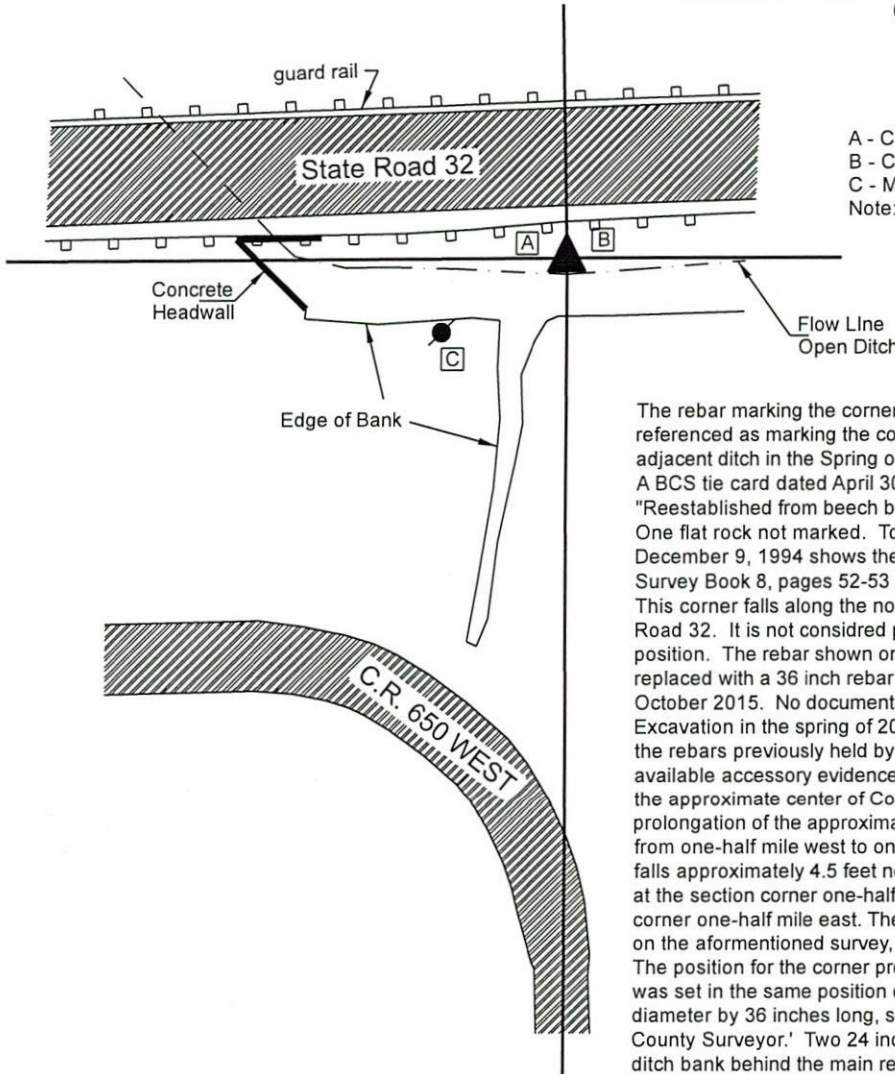
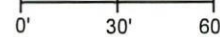
Depth: four inches above ground on north bank of ditch

Indiana tie card references:

IN02\_T19NR2W25\_76 IN02\_T19NR2W36\_04

### CORNER WITNESS DETAIL

SCALE 1" = 60'



- A - Chisel mark in top of guard rail post, 10.8'
  - B - Chisel mark in top of guard rail post, 11.1'
  - C - Mag nail set in N.E. side power pole, 2' a.g., 42.8'
- Note: all tie dimensions represent horizontal distances

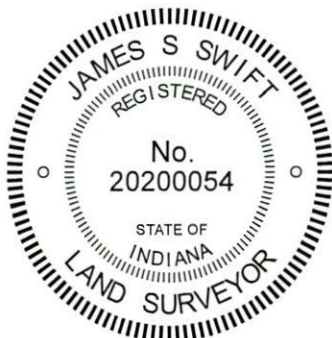
The rebar marking the corner was set in the position of a rebar previously referenced as marking the corner but removed during excavation work along the adjacent ditch in the Spring of 2019.

A BCS tie card dated April 30, 1867 states, with respect to this corner, "Reestablished from beech bearing tree. Set three rocks. One 5,4,3 marked +. One flat rock not marked. Top one 9,9,7 marked +." A BCS tie card dated December 9, 1994 shows the corner as a rebar found. A survey recorded in Survey Book 8, pages 52-53 shows the corner as a rebar found.

This corner falls along the north edge of an open ditch on the south side of State Road 32. It is not considered possible that ancient evidence has survived in this position. The rebar shown on the 1994 tie card was previously located and was replaced with a 36 inch rebar with metal cap stamped 'Boone County Surveyor' in October 2015. No documentation for the corner was produced at that time.

Excavation in the spring of 2019 removed the rebar set in 2015. The position of the rebars previously held by this office as marking the corner fits well with the available accessory evidence of the corner, being at the northerly prolongation of the approximate center of County Road 650 West and being at the easterly prolongation of the approximate center of Indiana State Road 32 as it is located from one-half mile west to one-quarter mile west of the subject corner. The rebar falls approximately 4.5 feet north of a straight line connecting a Type B monument at the section corner one-half mile west with a computed position for the section corner one-half mile east. The position of the rebar fits well with the position shown on the aforementioned survey, SB 8, p.52-53.

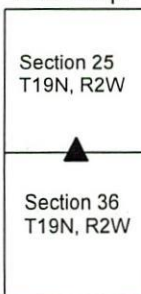
The position for the corner previously held by this office was held and a new rebar was set in the same position on September 25, 2019. The rebar is 5/8 inch diameter by 36 inches long, set in concrete, with a metal cap stamped 'Boone County Surveyor.' Two 24 inch long sections of 1/2 inch rebar were driven into the ditch bank behind the main rebar and embedded in the same mass of concrete as the main rebar.



*Kenneth E. Hedge*  
Kenneth E. Hedge, County Surveyor

*James S. Swift*  
James S. Swift, IN LS 20200054  
November 13, 2019

Jefferson Township



# SECTION CORNER RECORD

## BOONE COUNTY SURVEYOR'S OFFICE

NW 150-600

State Plane grid coordinates NAD83 (2011):  
 North: 1753493.23 East: 3093113.65 (U.S. survey feet)

Type of monument: Harrison, 4" disk 'Section Corner'  
 Depth: One inch below adjacent road surface

Indiana tie card references:  
 IN02\_T19NR2W25\_44 IN02\_T19NR1W30\_36

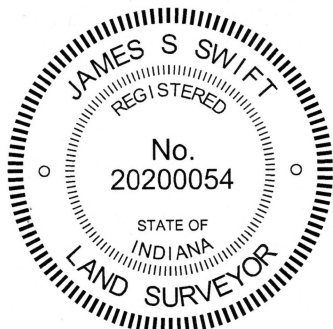
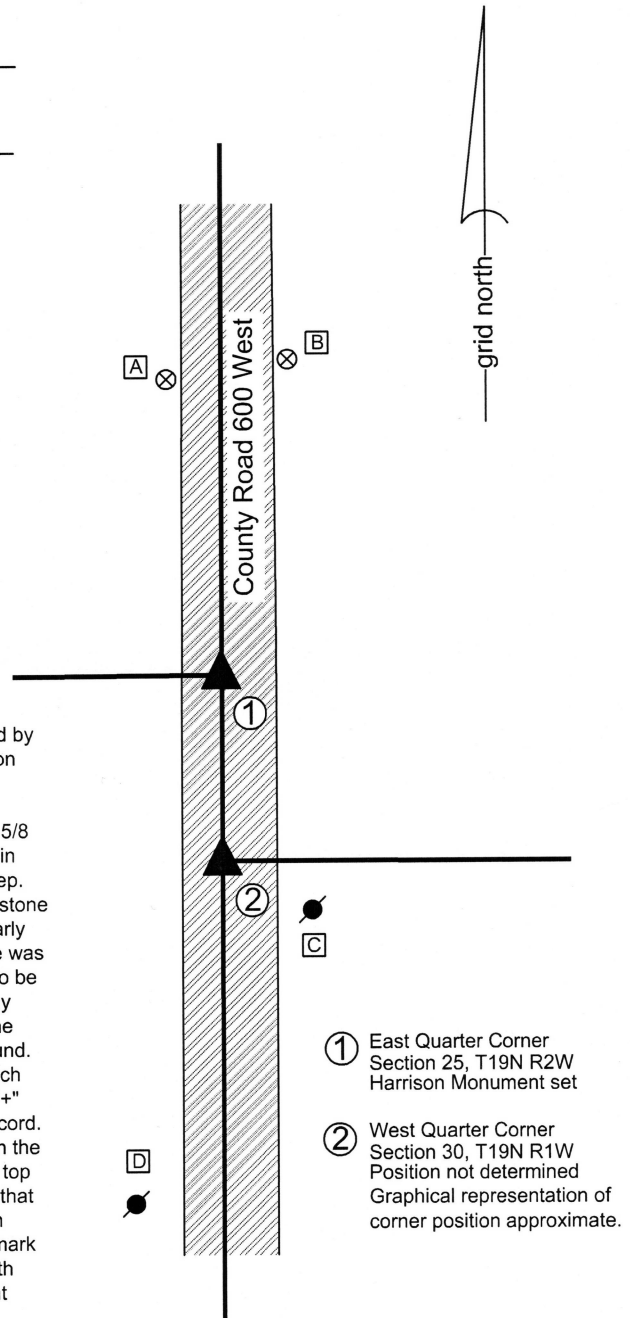
### CORNER WITNESS DETAIL

SCALE 1" = 40'

- A - Boone County witness mark, flush, 62.3'
  - B - Boone County witness mark, flush, 66.9'
  - C - Mag nail set in W. side power pole, 2' a.g., 51.4'
  - D - Mag nail set in E. side power pole, 2' a.g., 109.7'
- All ties are to corner 1 only

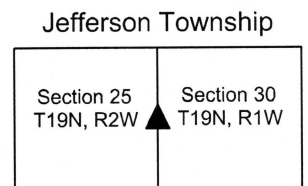
Boone County witness mark is a 3/8" diameter x 2' long rebar bearing a metal cap stamped "Boone County Witness Point."

The Harrison monument was set in place of a stone found.  
 A BCS record dated September 4, 1865 states, with respect to this corner, "Found by boxing Elm. Hick gone but roots there. Reestablished Set Rock 8,6,6 marked + on the under side. Mulberry stake set under Rock."  
 No recent tie cards were found referencing this corner.  
 Excavation was performed at this corner on June 12, 2015. Prior to excavation a 5/8 inch diameter rebar with a red plastic cap (markings illegible) was found in a hole in the asphalt at 5 inches deep. Excavation revealed a stone found at 13 inches deep. The stone was found to be 6 inches N-S by 6 inches E-W by 6 inches N-S by 6 inches E-W by 8.5 inches tall. The stone was accepted as being the same monument described in the 1865 record. A clearly defined "+" mark was found etched on the top, center of the stone. Another stone was also found on the east edge of the record stone, but the second stone appeared to be providing stabilization for the primary rock. Both stones were embedded in the clay layer below the road, with the record stone protruding slightly into the bottom of the road bed. Both stones were removed. No further evidence of the corner was found. No evidence of a mulberry stake was found below the rocks, though a stake of such soft wood may well have rotted to nothing since 1865. It is noted that the etched "+" mark was found on the top of the rock rather the underside, as called for in the record. Perhaps the stone was displaced and the rock oriented such that the mark was on the top rather than the underside. It is noted that most marks are found on either the top or sides of the rock and the orientation of this rock relative to its mark fit well with that general pattern. The primary rock was held as marking the corner and a Harrison monument was set in place of the rocks at the precise position of the etched "+" mark as originally found. The rebar, removed during excavation, had been 0.6 foot North and 0.2 foot West of the corner as established in place of the stone. The adjacent closing corner, being the west quarter corner of section 30, T19N, R1W was not established.  
 The established corner was originally set as a wood post in 1819.



*Kenneth E. Hedge*  
 Kenneth E. Hedge, County Surveyor

*James S. Swift*  
 James S. Swift, IN LS 20200054  
 March 24, 2016, revised April 7, 2016





PHOTOGRAPHIC DOCUMENTATION

Date of photography: June 12, 2015

The first stone found, being the bracing stone east of the record stone, as originally found.



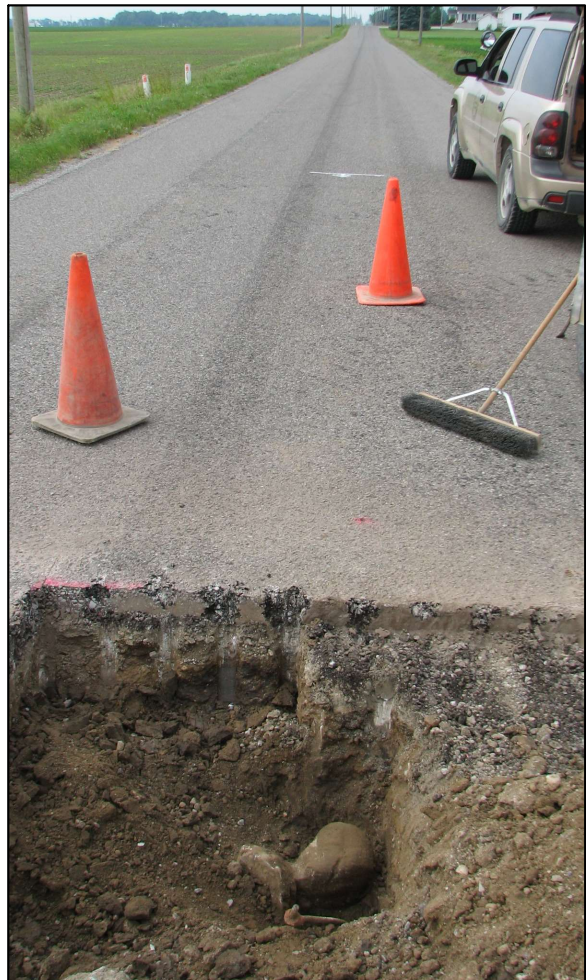
Both stones and the rebar.



Close-up view of the stones, showing the etched mark on the top of the record stone.



View from the north, looking across the stones and south along County Road 600 West.



The stones removed from the road, oriented approximately as found below the road bed.



For details and documentation, refer to related sheet "Section Corner Record."



# SECTION CORNER RECORD

NW 150-700

## BOONE COUNTY SURVEYOR'S OFFICE

State Plane grid coordinates NAD83 (2011):

North: 1753455.20 East: 3087809.63 (U.S. survey feet)

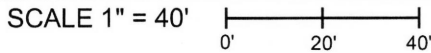
Type of monument: Harrison, 4" disk 'Section Corner'

Depth: One inch below adjacent road surface

Indiana tie card references:

IN02\_T19NR2W26\_44 IN02\_T19NR2W25\_36

### CORNER WITNESS DETAIL



- A - Boone County witness mark, flush, 41.1'
- B - Mag nail set in W. side wood post, 2' a.g., 21.6'
- C - Mag nail set in W. side power pole, 2' a.g., 94.3'

Boone County witness mark is a 3/8" diameter x 2' long rebar bearing a metal cap stamped "Boone County Witness Point."

The Harrison monument was set over a stone found.

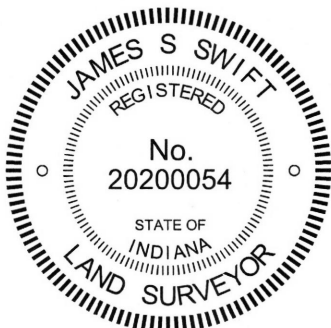
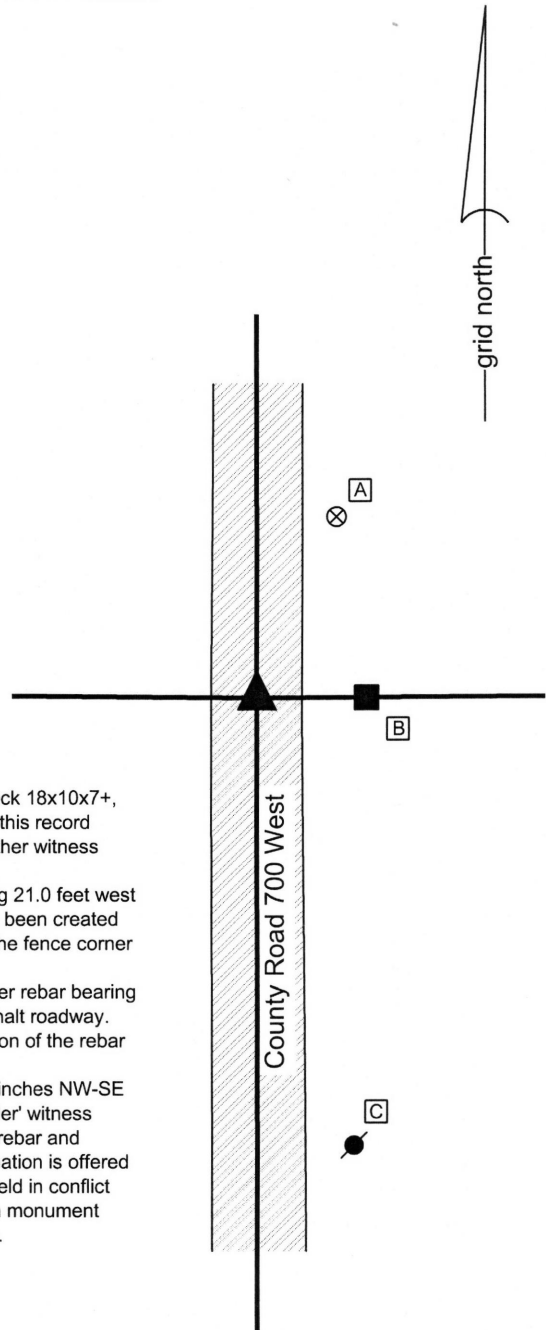
A BCS record dated May 24, 1895 states, with respect to this corner, "Established rock 18x10x7+, W. rock under 5x6x4, W. rock 'W', 9x7x6 N18°E, 29 1/2 [links]." It is interpreted that this record indicates that one witness rock was set below the primary corner stone and that another witness rock was marked "W" and set 29 1/2 links N18°E.

A BCS tie card dated Nov. 1970 states "Found Stone" and shows the corner as being 21.0 feet west of a fence corner post to the East. A BCS tie card with no date, but believed to have been created in the early 1990s, shows the corner as a 5/8 inch rebar which is 19.25 feet west of the fence corner post to the east.

This corner was excavated on June 22, 2015. Prior to excavation, a 5/8 inch diameter rebar bearing a red plastic cap (markings illegible) was found at 5 inches deep in a hole in the asphalt roadway. An ancient wood corner post was also found on the east side of the road. The position of the rebar fit with the undated tie card.

Excavation revealed a stone found at 13 inches deep. The stone was found to be 7 inches NW-SE by 5 inches NE-SW by 3 inches tall, approximating the dimensions of the record 'under' witness stone. The center of the top of the stone was 1.4 feet west and 0.3 foot north of the rebar and matched the tie to the corner post to east, as shown on the 1970 tie card. No explanation is offered for why the rebar was situated to the east of the stone or why it was established or held in conflict with the previous records. The stone was held as marking the corner and a Harrison monument was set over the top, center of the stone. The rebar was removed during excavation.

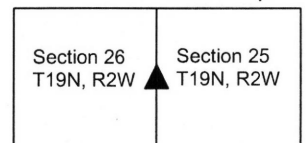
This corner was originally established as a wood post in 1829.



*Kenneth E. Hedge*  
 Kenneth E. Hedge, County Surveyor

*James S. Swift*  
 James S. Swift, IN LS 20200054  
 March 24, 2016

Jefferson Township





PHOTOGRAPHIC DOCUMENTATION

Date of photography: June 22, 2015

The stone as it was originally exposed.



The stone viewed from above and east.



View from the south looking across the stone and north along County Road 700 West.



View from above and north, showing the stone and the position of the rebar as marked with a plumb-bob.



For details and documentation, refer to related sheet "Section Corner Record."



# SECTION CORNER RECORD

NW 200-600

## BOONE COUNTY SURVEYOR'S OFFICE

State Plane grid coordinates NAD83 (2011): (U.S. survey feet)

Corner 1: North: 1756136.60 East: 3093113.15

Corner 2: North: 1756089.97 East: 3093113.17

Type of monument: Harrison, 4" disk 'Section Corner'

Depth: One inch below adjacent road surface

Indiana tie card references:

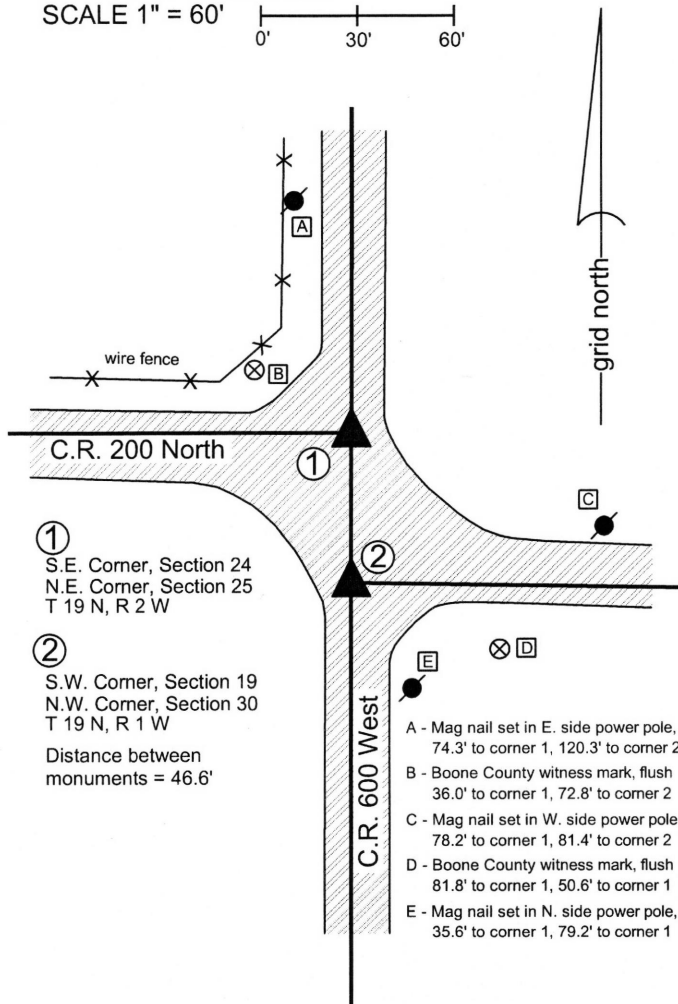
IN02\_T19NR2W24\_80 IN02\_T19NR1W19\_72

IN02\_T19NR2W25\_08 IN02\_T19NR1W30\_00

### CORNER WITNESS DETAIL

SCALE 1" = 60'

0' 30' 60'



The Harrison monument at corner 1 was set over a stone found. The Harrison monument at corner 2 was set on the range line adjacent to a stone found.

A BCS record dated December 31, 1872 states, with respect to corner 1, Reestablished N.E. corner, set rock 16,12,8 +. One under it 6 1/2, 5 1/2, 4 +."

An undated BCS tie card, believed to date from June, 1974, states, with respect to corner 1, "No stone located."

A BCS record dated November 30, 1878, states, with respect to corner 2, "Reest'd 71 links S. of the lap corner. Set two limestones 12x11x3, lower, lies on side, + on top side. (Top) 18x8x4 on end + on top and a smaller one on each side. + on sides."

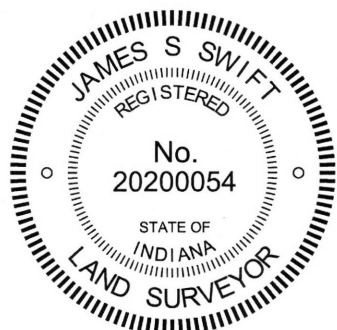
A BCS tie card dated June 1974 states, with respect to corner 2, "No stone."

Both corners were excavated on June 23, 2015. Prior to excavation, a railroad spike had been found in the vicinity of corner 1 and a vertical section of railroad rail had been found in the vicinity of corner 2. These two monuments were located at 43.8 feet apart. The record closing distance, originally recorded in 1829 and reaffirmed in 1878, of 71 links equates to approximately 46.9 feet.

Excavation at corner 1 revealed a railroad rail found directly below the railroad spike. Further excavation revealed a stone found at 22 inches deep. With 10 inches of the stone exposed, it measured 11.5 inches N-S by 8 inches E-W. The stone was embedded in the clay layer below the road, appeared to be vertical, and remained stable with the top 11 inches exposed. The stone had a distinct N-S ridge across the top with a discernable high point. No specific markings were observed on the stone, though it is a rough-surfaced rock and marks are hard to distinguish on such a stone. The top, high point of the stone was held as marking the corner and a Harrison monument was set at this point. The railroad spike and railroad rail, both removed during excavation, had been 0.2 foot south and 0.8 foot east of the point held as the corner.

Excavation at corner 2 revealed several stones found. The top stone was found at 22 inches deep. This stone appeared to be of limestone material and appeared to be leaning slightly toward the north. Stood vertically, the stone had a distinct etched "+" mark on the top. As stood vertically, the stone measured 18 inches tall by 8 inches N-S by 4 inches E-W. Two smaller rocks were found on the east and west sides, respectively, of the larger rock. All three stones were removed and another stone was found at 40 inches deep. This stone appeared to be horizontal and had a distinct etched "+" mark on the top of the flat rock. This set of four stones was accepted as being the same set of stones called for in the 1878 record. The etched mark on the lower stone was found to be 46.6 feet south of the top, center of the stone at corner 1 and approximately 0.4 foot west of the range line as defined by the positions of corner 1 and the standard corner approximately 1/2 mile south. Corner 2 was established on the range line at the same north-south dimension as the etched "+" mark on the lower stone.

A Harrison monument was set at this position. The railroad rail, removed during excavation, had been 1.5 feet east and 2.6 feet north of the final position for corner 2. An iron pipe was also found 1 foot south of the rail. This monument was also removed during excavation. Corner 1 was originally established as a wood post in 1819 and corner 2 was originally established as a wood post in 1829.



*Kenneth E. Hedge*  
Kenneth E. Hedge, County Surveyor

*James S. Swift*  
James S. Swift, IN LS 20200054  
March 24, 2016

Jefferson Township

Section 24 T19N, R2W	Section 19 T19N, R1W
Section 25 T19N, R2W	Section 30 T19N, R1W



PHOTOGRAPHIC DOCUMENTATION

Date of photography: June 23, 2015

The stone at the standard corner (Corner 1) as it was originally exposed.



The first stone found at the closing corner (Corner 2). Note the mark on top.



The situation at the closing corner. Three stones removed, the bottom stone left in place.



View of the standard corner. View from the East, looking across the stone and west along County Road 200 South.



Another view of the standard corner, including the removed stone and the found iron pipe.



For details and documentation, refer to related sheet "Section Corner Record."



# SECTION CORNER RECORD

NW 200-650

## BOONE COUNTY SURVEYOR'S OFFICE

State Plane grid coordinates NAD83 (2011):

North: 1756138.26 East: 3090466.31 (U.S. survey feet)

Type of monument: Harrison, 4" disk 'Section Corner'

Depth: One inch below adjacent road surface

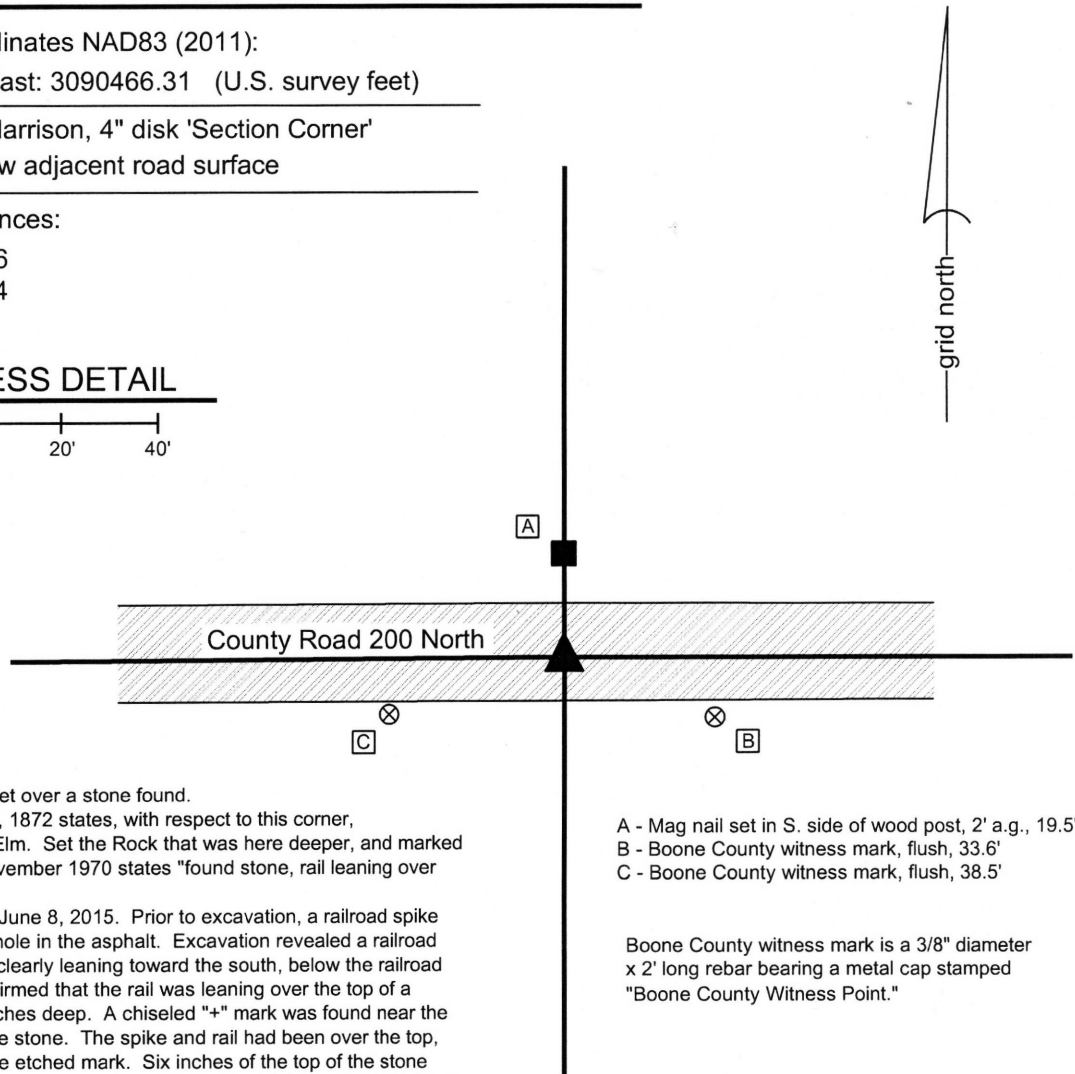
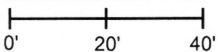
Indiana tie card references:

IN02\_T19NR2W24\_76

IN02\_T19NR2W25\_04

### CORNER WITNESS DETAIL

SCALE 1" = 40'



The Harrison monument was set over a stone found.

A BCS record of December 31, 1872 states, with respect to this corner, "Reestablished from Roots of Elm. Set the Rock that was here deeper, and marked it +." A BCS tie card dated November 1970 states "found stone, rail leaning over stone."

This corner was excavated on June 8, 2015. Prior to excavation, a railroad spike was found one inch deep in a hole in the asphalt. Excavation revealed a railroad rail found, partially vertical but clearly leaning toward the south, below the railroad spike. Further excavation confirmed that the rail was leaning over the top of a stone. The stone was at 19 inches deep. A chiseled "+" mark was found near the southeast edge of the top of the stone. The spike and rail had been over the top, center of the stone, not over the etched mark. Six inches of the top of the stone were exposed, at which point the stone measured 14 inches E-W by 11 inches N-S. The stone appeared to that it was likely to be larger in all dimensions than that part measured and exposed. The stone was embedded in the clay layer below the road bed, protruding 6 inches into the bottom of the road bed. The spike and rail were both removed and the stone was left in place. A Harrison monument was set over the top, center of the stone in the same position as the railroad spike found prior to excavation.

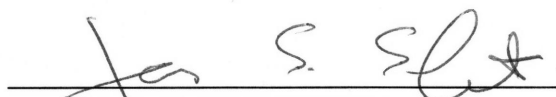
This corner was originally established as a wood post in 1829.

- A - Mag nail set in S. side of wood post, 2' a.g., 19.5'
- B - Boone County witness mark, flush, 33.6'
- C - Boone County witness mark, flush, 38.5'

Boone County witness mark is a 3/8" diameter x 2' long rebar bearing a metal cap stamped "Boone County Witness Point."



  
Kenneth E. Hedge, County Surveyor

  
James S. Swift, IN LS 20200054

March 24, 2016

Jefferson  
Township

Section 24  
T19N, R2W

Section 25  
T19N, R2W



PHOTOGRAPHIC DOCUMENTATION

Date of photography: June 8, 2015

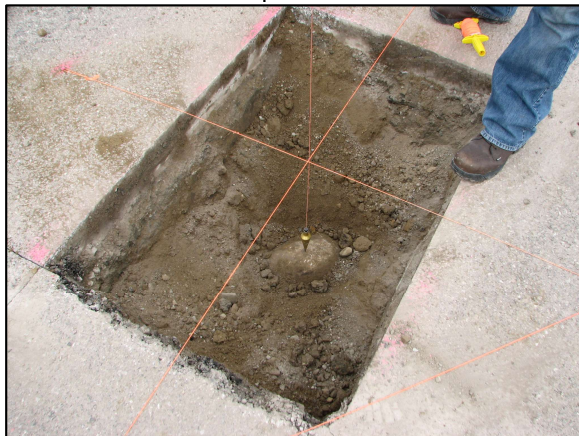
The top of the railroad rail found leaning over the stone.



The railroad rail being removed from the hole.



Straddle strings and a plumb bob used to demonstrate the position of the top of the rail as found with respect to the stone.



View of the stone as it is situated in within County Road 200 North.



View of the stone from above.



For details and documentation, refer to related sheet "Section Corner Record."

# SECTION CORNER RECORD

# NW 200-700

## BOONE COUNTY SURVEYOR'S OFFICE

State Plane grid coordinates NAD83 (2011):  
North: 1756122.37 East: 3087805.07 (U.S. survey feet)

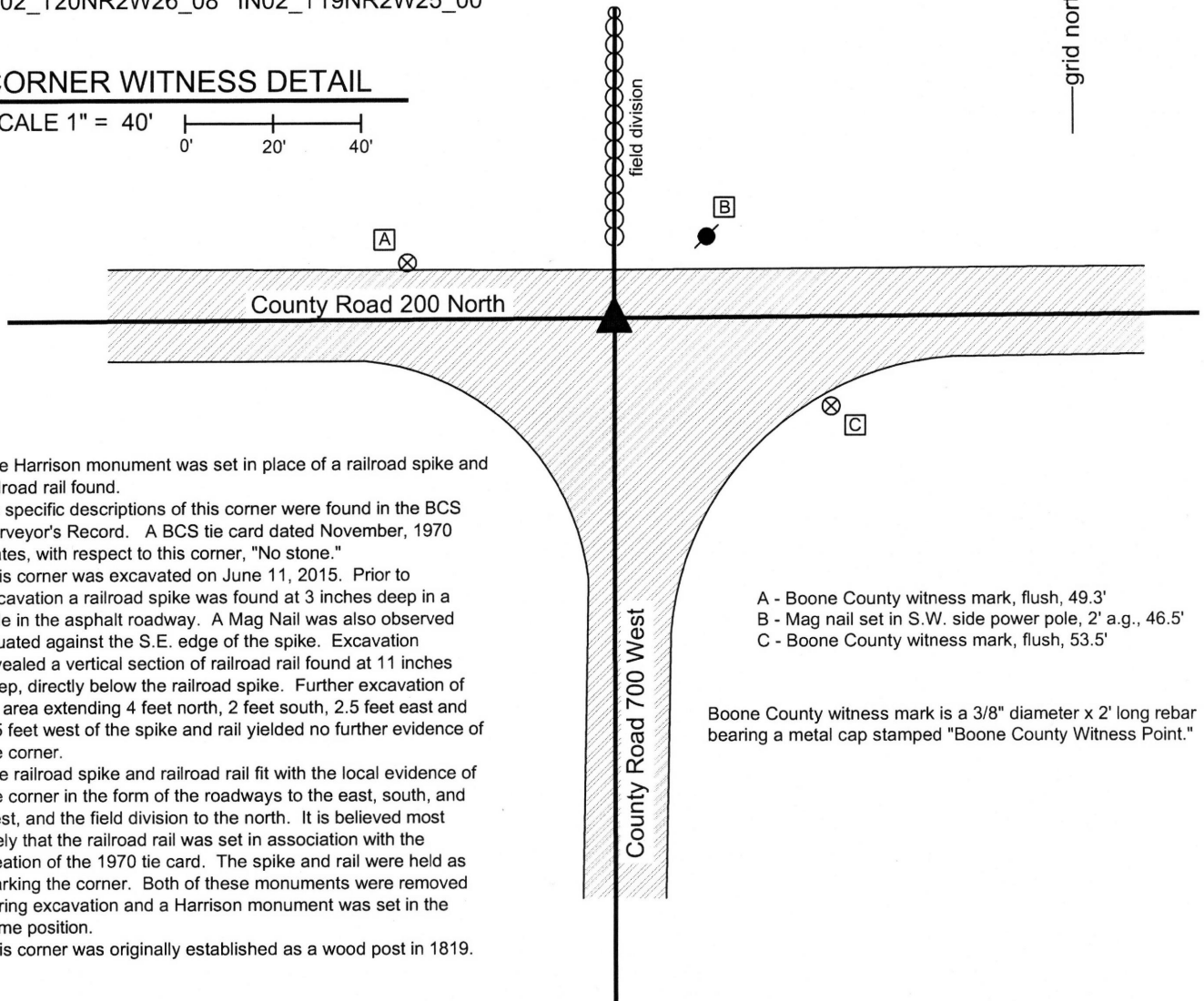
Type of monument: Harrison, 4" disk 'Section Corner'  
Depth: One inch below adjacent road surface

Indiana tie card references:  
IN02\_T19NR2W23\_80 IN02\_T19NR2W24\_72  
IN02\_T20NR2W26\_08 IN02\_T19NR2W25\_00



### CORNER WITNESS DETAIL

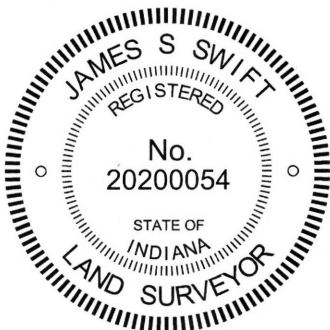
SCALE 1" = 40'  
0' 20' 40'



The Harrison monument was set in place of a railroad spike and railroad rail found.  
No specific descriptions of this corner were found in the BCS Surveyor's Record. A BCS tie card dated November, 1970 states, with respect to this corner, "No stone."  
This corner was excavated on June 11, 2015. Prior to excavation a railroad spike was found at 3 inches deep in a hole in the asphalt roadway. A Mag Nail was also observed situated against the S.E. edge of the spike. Excavation revealed a vertical section of railroad rail found at 11 inches deep, directly below the railroad spike. Further excavation of an area extending 4 feet north, 2 feet south, 2.5 feet east and 2.5 feet west of the spike and rail yielded no further evidence of the corner.  
The railroad spike and railroad rail fit with the local evidence of the corner in the form of the roadways to the east, south, and west, and the field division to the north. It is believed most likely that the railroad rail was set in association with the creation of the 1970 tie card. The spike and rail were held as marking the corner. Both of these monuments were removed during excavation and a Harrison monument was set in the same position.  
This corner was originally established as a wood post in 1819.

- A - Boone County witness mark, flush, 49.3'
- B - Mag nail set in S.W. side power pole, 2' a.g., 46.5'
- C - Boone County witness mark, flush, 53.5'

Boone County witness mark is a 3/8" diameter x 2' long rebar bearing a metal cap stamped "Boone County Witness Point."



*Kenneth E. Hedge*  
Kenneth E. Hedge, County Surveyor

*James S. Swift*  
James S. Swift, IN LS 20200054  
March 24, 2015

Jefferson Township

Section 23 T19N, R2W	Section 24 T19N, R2W
Section 26 T19N, R2W	Section 25 T19N, R2W