

SECTION CORNER RECORD

BOONE COUNTY SURVEYOR'S OFFICE

SW 400-000

- ① S.E. Corner, Section 24
N.E. Corner, Section 25
T 18 N, R 1 W
 - ② S.W. Corner, Section 19
N.W. Corner, Section 30
T 18N, R 1 E
- Distance between monuments:
124.08' (188 links)

State Plane grid coordinates NAD83 (2011):

Corner 1: North: 1724387.67 East: 3124968.43 (U.S. survey feet)

Corner 2: North: 1724511.75 East: 3124967.30 (U.S. survey feet)

Type of monument: Harrison, 4" disk 'Section Corner'

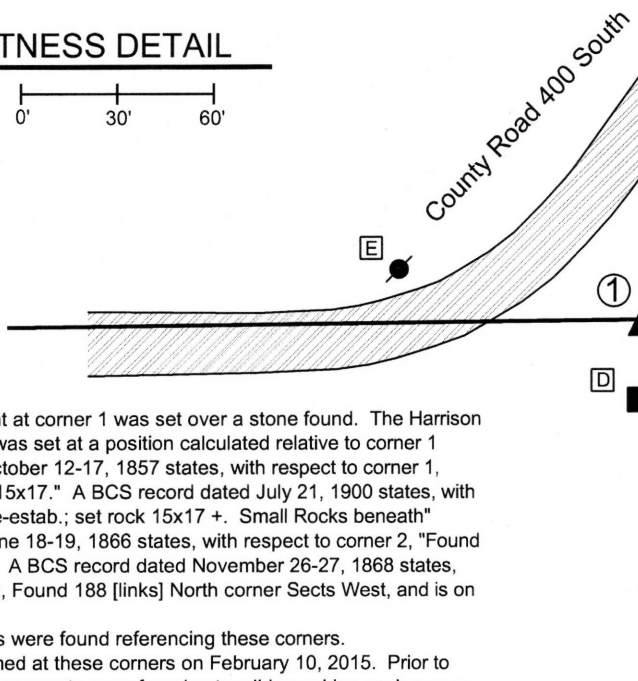
Depth: Flush with adjacent ground

Indiana tie card references:

IN02_T18NR1W24_80 IN02_T18NR1E14_72
IN02_T18NR1W25_08 IN02_T18NR1E23_00

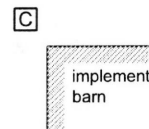
CORNER WITNESS DETAIL

SCALE 1" = 60'



- A - Mag nail set in S. side power pole, 2' a.g.
185.0' to corner 1, 65.0' to corner 2
- B - Mag nail set in S. side power pole, 2.5' a.g.
143.8' to corner 1, 51.6' to corner 2
- C - N.W. corner of foundation, metal implement barn
88.8' to corner 1, 200.2' to corner 2
- D - Mag nail set in N. side, wood post, 0.8' a.g.
22.2' to corner 1, 146.1' to corner 2
- E - Mag nail set in E. side power pole, 2' a.g.
77.2' to corner 1, 131.3' to corner 2

Branaman Barn and Implement lot



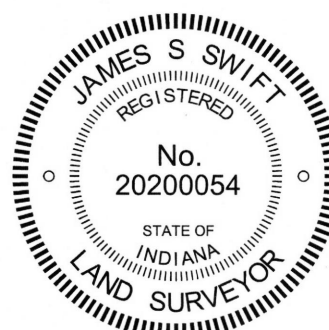
The Harrison monument at corner 1 was set over a stone found. The Harrison monument at corner 2 was set at a position calculated relative to corner 1. A BCS record dated October 12-17, 1857 states, with respect to corner 1, "Reestablished. Rock 15x17." A BCS record dated July 21, 1900 states, with respect to corner 1, "Re-estab.; set rock 15x17 +. Small Rocks beneath" A BCS record dated June 18-19, 1866 states, with respect to corner 2, "Found from Burr Oak (down)." A BCS record dated November 26-27, 1868 states, with respect to corner 2, Found 188 [links] North corner Sects West, and is on East side of a Hickory."

No recent BCS tie cards were found referencing these corners.

Excavation was performed at these corners on February 10, 2015. Prior to excavation, Harrison monuments were found ostensibly marking each corner. The two monuments were found to be located exactly 188 links (124.08 feet) apart from each other. The source of the monuments is not known, though it is likely that they were set by representatives of the former Anderson & Associates in approximately 2005. Excavation at corner 1 yielded a stone found at 8 inches deep. The stone matched the 15x17 inch dimensions called in the 1857 and 1900 record. As found, the stone was mostly vertical, though leaning slightly to the northwest. A piece of wire was found partially wrapped around the stone. The wire appeared to be serving a purpose of holding the stone in a vertical orientation, perhaps while the surrounding ground was refilled. The stone fit well with the evidence of the line to the west, in the form of the center of County Road 400 South, and was slightly east of the old end post to the south. No specific marks were found on the stone, though it is noted that the stone had a rough surface and marks are often difficult to detect on such rocks. A smaller rock (5x7x8) was found nearby, but not underneath the stone. A possible explanation for the fact that the smaller rock was not underneath the primary stone would be that at some point excavation activities in this area disturbed the ground. Perhaps the primary stone and smaller rocks were all removed and only the primary stone replaced. In the field, this possibility appeared to be supported by the curious piece of wire which appeared to have held the stone in a vertical orientation at some point. Excavation in the vicinity of corner 2 yielded no further evidence of that corner. The 188 link offset, being the original federal offset and confirmed by the BCS records, was held for the separation between the corners. Corner 2 was established on the range line, as defined by the stone at corner 1 and a wood post at or near to the the standard corner 1/2 mile north. A Harrison monument was set at this position. Corner 1 was originally established as a wood post in 1819. Corner 2 was originally established as a wood post in 1820.

Kenneth E. Hedge
Kenneth E. Hedge, County Surveyor

James S. Swift
James S. Swift, IN LS 20200054
March 28, 2016



Harrison Township

Section 24 T18N, R1W	Section 19 T18N, R1E
Section 25 T18N, R1W	Section 30 T18N, R1E

SECTION CORNER RECORD

SW-400-100

BOONE COUNTY SURVEYOR'S OFFICE

State Plane grid coordinates NAD83 (2011):
North: 1724326.48 East: 3119633.20 (U.S. survey feet)

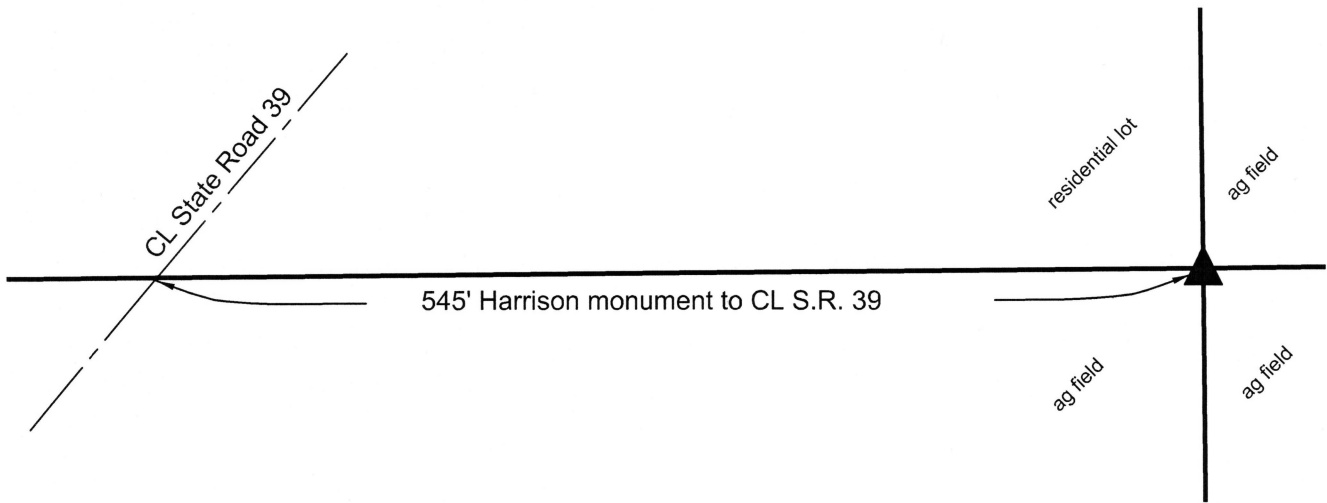
Type of monument: Harrison, 4" disk 'Section Corner'
Depth: One inch above adjacent ground

Indiana tie card references:
IN02_T18NR1W23_80 IN02_T18NR1W24_72
IN02_T18NR1W25_08 IN02_T18NR1W25_00



CORNER WITNESS DETAIL

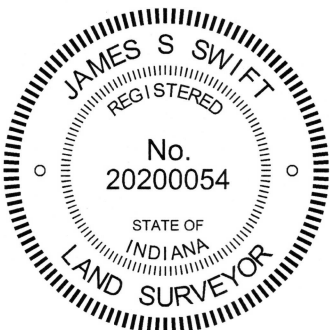
SCALE 1" = 100'



The Harrison monument was set in place of a collection of numerous small rocks found below grade. A BCS record dated October 12-16, 1857 states, with respect to this corner, "Reestablished. Rock 15x20." No recent BCS tie cards were found referencing this corner.

This office assisted Deckard Engineering/Surveying with section corner perpetuation in this vicinity during November, 2015. The corner 1/2 mile south of the subject corner (SW 150-400) was excavated and monumented by this office at that time. The subject corner was excavated by Deckard in the same time period. Calculating the position relative to proximate corners and relevant deed descriptions and evidence, the Deckard crew found substantial evidence of the corner in the form of a grouping of numerous small rocks and held the position of the corner. That position for the corner was confirmed by this office. The position of the corner held by Deckard works well with proximate corners and local evidence in the form of the east-west field division and remnants of fence to the east and west as well as evidence of occupation and remnants of fence to the north. A Harrison monument was set at that position on October 13, 2016. The Deckard survey is recorded as Instrument 201600002449 in the Office of the Boone County Recorder.

This corner was originally established as a wood post in June, 1820.



Kenneth E. Hedge, County Surveyor

James S. Swift, IN LS 20200054
March 23, 2017

Harrison Township

Section 23 T18, R1W	Section 24 T18N, R1W
Section 26 T18N, R1W	Section 25 T18N, R1W

An arrow points to the intersection of Section 24 and Section 25.

SECTION CORNER RECORD

SW 450-000

BOONE COUNTY SURVEYOR'S OFFICE

State Plane grid coordinates NAD83 (2011):

Corner 1: North: 1721737.89 East: 3124994.00 (U.S. survey feet)

Corner 2 (post): North: 1721849.09 East: 3124992.93 (U.S. survey feet)

Corner 2 witness rebar: North: 1721849.09 East: 3124992.52 (U.S. survey feet)

Corner 1: 5/8" diameter rebar w/metal cap stamped 'Boone County Surveyor' 10 in. deep

Corner 2: 7"x7" cedar corner post 8 in. deep, witnessed by rebar 0.4 feet west, 9 in. deep

Indiana tie card references:

IN02_T18NR1E30_36 IN02_T18NR1W25_44



CORNER WITNESS DETAIL

SCALE 1" = 50'

Corners fall in tilled field, no objects were found nearby to provide distance ties.

① East quarter corner,
Section 25, T 18 N, R 1 W
Boone County rebar set

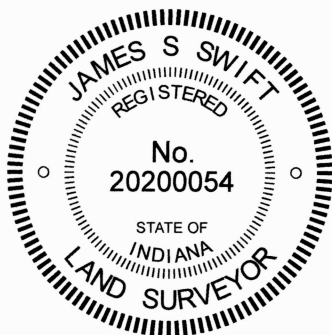
② West quarter corner,
Section 30, T 18 N, R 1 E
Broken-off cedar post
witnessed by rebar

Distance between corners:
111.21' = 168.5 links

②

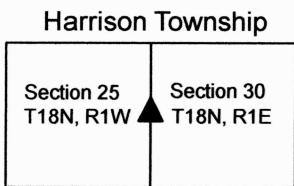
①

The broken-off cedar post at Corner 2 was found in place and held as marking the corner. Corner 1 was 168.5 links south of Corner 2. A BCS record of October 12-16, 1857 states, with respect to Corner 1, "Reestablished. Rock 12x16." A BCS record of November 27, 1868 states, with respect to Corner 2, "Established 168-1/2 [links] North of corner for Sect. 25. Set Rock 10,10,4 +." This set of corners was investigated over several years and excavated on October 29, 2024. The corners fall amidst a continuous tilled field and no above-ground evidence of the corners was visible in the vicinity of the corners. The beginning point for searching for the corners was based on the easterly prolongation of the south line of the west half of the northwest quarter of Section 25, as monumented by found nails. No specific evidence of Corner 1 was found at this position, but we did find the broken base of an old cedar corner post providing reliable evidence of Corner 2 at a position approximately 168.5 links north of the computed position for Corner 1. The base of the post was found at 8 inches deep in the tilled field. Though the post has been broken off, the in-ground base appeared to be undisturbed. The post is 7 inches N-S by 7 inches E-W and is clearly made of cedar, which was often the wood used for corner posts in the late 1800s. We found several rocks around the post but they all appeared to be bracing the post and were not held as marking the corners. The stone called for in the 1868 BCS record was not found and is presumed to have been situated too close to the surface to survive recent agricultural activities. The center of the actual post was held as the best available evidence of the corner. A 24-inch length of rebar with metal "Boone County Surveyor" cap was set adjacent to the west side of the post as a witness monument. The post is held as the corner, the rebar is intended strictly as a witness marker. The top of the post is 8 inches deep in the field, the witness rebar was set at 9 inches deep on October 29, 2024. Corner 1 was established on the southerly prolongation of the line connecting the northeast corner of Section 25 (see BCS Corner SE 400-000) and the center of the broken-off post at a distance of 168.5 links, or 111.21 feet. A 24-inch length of rebar with metal "Boone County Surveyor" cap was set at this position at 10 inches deep, also on October 29, 2024. Corner 1 was originally established as a wood post in 1819. Corner 2 is not an original federal corner.



Carol Cunningham, County Surveyor

James S. Swift, IN LS 20200054
November 13, 2024



SECTION CORNER RECORD

SW 450-100

BOONE COUNTY SURVEYOR'S OFFICE

State Plane grid coordinates NAD83 (2011):

North: 1721688.87 East: 3119661.48 (U.S. survey feet)

Type of monument: Harrison, 4" disk 'Section Corner'

Depth: One inch below adjacent road surface

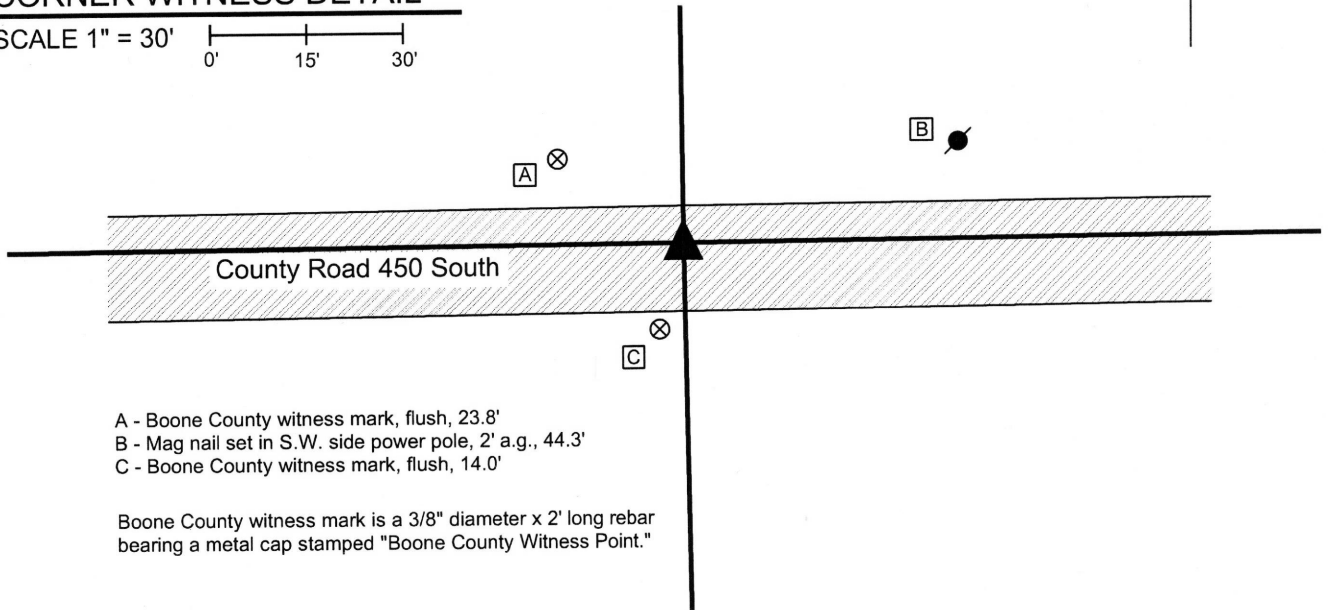
Indiana tie card references:

IN02_T18NR1W26_44 IN02_T18NR1W25_36



CORNER WITNESS DETAIL

SCALE 1" = 30'
0' 15' 30'



- A - Boone County witness mark, flush, 23.8'
- B - Mag nail set in S.W. side power pole, 2' a.g., 44.3'
- C - Boone County witness mark, flush, 14.0'

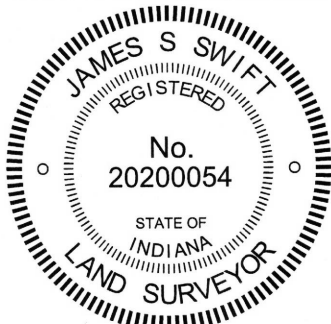
Boone County witness mark is a 3/8" diameter x 2' long rebar bearing a metal cap stamped "Boone County Witness Point."

The Harrison monument was set over a stone found.

A BCS record dated October 12-16, 1857 states, with respect to this corner, "Reestablished. Rock 12x22." The same record also calls for a stone set at the center of section 25. A subsequent record, dated April 30, 1895, established a position for a title corner (termed "10") which is 4 chains to the east of the subject corner.

A BCS record dated May 5, 1992 shows the corner as a railroad spike found.

This corner was excavated on November 25, 2015. Prior to excavation, a railroad spike was found in the center of County Road 450 South. The spike was accepted as most likely representing the monument shown on the 1992 tie card, though no ties remain to prove this. At the corner, no evidence of occupation was present to help define the North-South section lines. However, an ancient wood post and associated field division were found providing evidence of the title corner "10." Analysis of the relative positions of the railroad spike with evidence of surrounding lines and corners clearly indicated that the spike was situated too far east to actually mark the corner. A probable position for the subject corner was computed with respect to this evidence and excavation was centered on this probable position. Excavation revealed the stone described in the 1857 record at a point 2.9 feet north and 6.5 feet west of the railroad spike. The stone was found at 14 inches deep. It was vertical with a distinct high point. With 14 inches of the top of the stone exposed, the stone measured 12 inches E-W by 5 inches N-S and remained entirely stable. Probing on the south side of the stone indicated that it was approximately the record height of 22 inches. The stone was embedded in the clay layer below the road bed, with the top of the rock protruding into the bottom of the road bed by 2 inches, more or less. The stone was accepted as being the same monument called for in the 1857 record and was held as marking the corner. The stone was left in place and a Harrison monument was set over the top, high point of the rock. The railroad spike was not situated within the original area of excavation, hence was not removed. The position of the wood post providing evidence of corner "10" fit well with the position of the stone. This corner was originally established as a wood post in 1820.

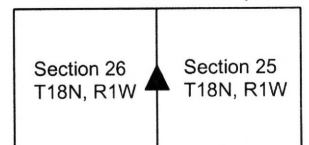


Kenneth E. Hedge
Kenneth E. Hedge, County Surveyor

James S. Swift
James S. Swift, IN LS 20200054

March 28, 2016

Harrison Township



SECTION CORNER RECORD

SW 500-000

BOONE COUNTY SURVEYOR'S OFFICE

State Plane grid coordinates NAD83 (2011):

Corner 1: North: 1719091.18 East: 3125012.79 (U.S. survey feet)

Corner 2: North: 1719189.52 East: 3125012.18 (U.S. survey feet)

Corner 1: 5/8" diam. rebar w/alum. cap stamped 'Boone County Surveyor, 14" b.g.

Corner 2: 5/8" diam. rebar w/alum. cap stamped 'Boone County Surveyor, 14" b.g.

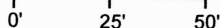
Indiana tie card references:

IN02_T18NR1E30_72 IN02_T18NR1W25_80

IN02_T18NR1W36_08 IN02_T18NR1E31_00

CORNER WITNESS DETAIL

SCALE 1" = 50'



The rebar at Corner 1, the standard corner (SW 500-000), being the corner of Section 25 and 36, T18N, R1W, was set in place of a stone found. The rebar at Corner 2, the closing corner (SE 500-000), being the corner of Sections 30 and 31, T18N, R1E, was set at a computed position.

A BCS record of September 8-12, 1857 (the record lists 1837, but has been edited to note the year as 1857, which makes more sense based on the nature of the record and the style of entry and notation of the monuments) states, with respect to Corner 1, "Reestablished. Set Rock 4x10." A BCS record of May 26, 1873, states with respect to Corner 2, "Reestablished from the trees. Set a Rock about 13.6.7.4-1/2 marked +, mark is dim as rock is shaly."

No recent BCS tie cards were found referencing these corners. Corner 1 is called-for as being a headpost in a deed recorded as Deed Record 251, page 191 in the Office of the Boone County Recorder. Corner 2 is shown as a calculated position on the Cunningham Minor Residential Plat recorded in Plat Book 27, page 91.

These corners were investigated over the course of several years and were specifically excavated on October 24, 2024. Standing fences have been removed in the immediate vicinity of the corners and visible local evidence of the corners is scarce. However, rebars which are referenced in Deed Record 251, page 191 were found marking the boundaries of the parcel described in that document. Holding the found rebars, we were able to compute a position for the head post referenced as marking the southeast corner of Section 25. Excavation at that position revealed the stone referenced in the 1857 record at 12 inches deep. As found, the stone appeared to be leaning slightly to the west, with the top, high point being at the west edge. Notably, this point on the found rock was also painted orange, accepted as a clear indication that a previous surveyor has found and marked the rock. This rock was found to fall approximately 0.5 of a foot north of the computed position for the headpost. We did not find the post, which has evidently been extracted from the ground, but we did find scraps of wood, remnants of the post. It appears that the record stone was situated on the north edge of the post. We held the stone as marking the corner and replaced it with a 24-inch length of 5/8-inch diameter rebar set at 14 inches deep in order to avoid damage by agricultural equipment. Excavation on the same day at a point 149 links north of the stone, being the expected position of the closing corner, also revealed fragments of wood, indicating the position of a post which was previously at that corner. A rock found at 20 inches deep near the computed position for the corner was too small to be the rock mentioned in the 1873 record. It is noted that the position 149 links north of the stone at the standard corner also falls at the north edge of the evidence of the post in the form of fragments of wood. It appeared in the field that both stones must have been at the north edges of the respective corner posts.

The stone found at Corner 1 was held as marking that corner and replaced with a 5/8-inch diameter rebar with metal cap stamped Boone County Surveyor on October 24, 2024. The position of the closing corner was established at 149 links (federal closing distance) north of Corner 1, on a line connecting that corner with the northwest corner of the southwest quarter of the southwest quarter of Section 30 (see BCS Corner SE 475-000). It is noted that this position falls at the westerly prolongation of a line connecting the south quarter corner of Section 30 (see BCS Corner SE 500-050) and the center of the existing east-west county road at a point 1/4 mile west thereof. A 24-inch length of 5/8-inch diameter rebar with Boone County Surveyor cap was set at this location on October 24, 2024.

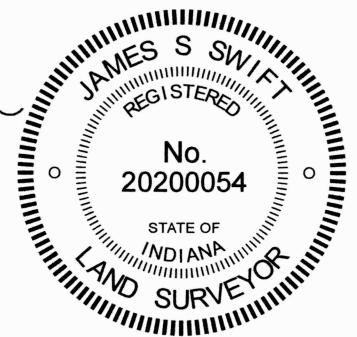
Corner 1 was originally set as a wood post in 1819. Corner 2 was originally set as a wood post in 1820.

- A - Boone County witness mark, flush, 25.0' to Corner 1, 118.3' to Corner 2
- B - Boone County witness mark, flush, 80.1' to Corner 1, 23.9' to Corner 2
- C - Boone County witness mark, flush, 109.6' to Corner 1, 17.2' to Corner 2
- D - S.W. edge of 57" diameter oak tree, 2' a.g., 196.2 to Corner 1, 106.3' to Corner 2



- ① S.E. Corner, Section 25
N.E. Corner, Section 36
T 18 N, R 1 W
- ② S.W. Corner, Section 30
N.W. Corner, Section 31
T 18 N, R 1 E

Distance between monuments:
149 links = 98.34'



Harrison Township

Section 25 T18N, R1W	Section 30 T18N, R1E
Section 36 T18N, R1W	Section 31 T18N, R1E

Carol Cunningham, County Surveyor James S. Swift IN LS 20200054 October 30, 2024



edge of grass/field

SECTION CORNER RECORD

SW 500-100

BOONE COUNTY SURVEYOR'S OFFICE

State Plane grid coordinates NAD83 (2011):

North: 1719043.73 East: 3119704.75 (U.S. survey feet)

Type of monument: Harrison, 4" disk 'Section Corner'

Depth: Six inches below adjacent gravel road surface

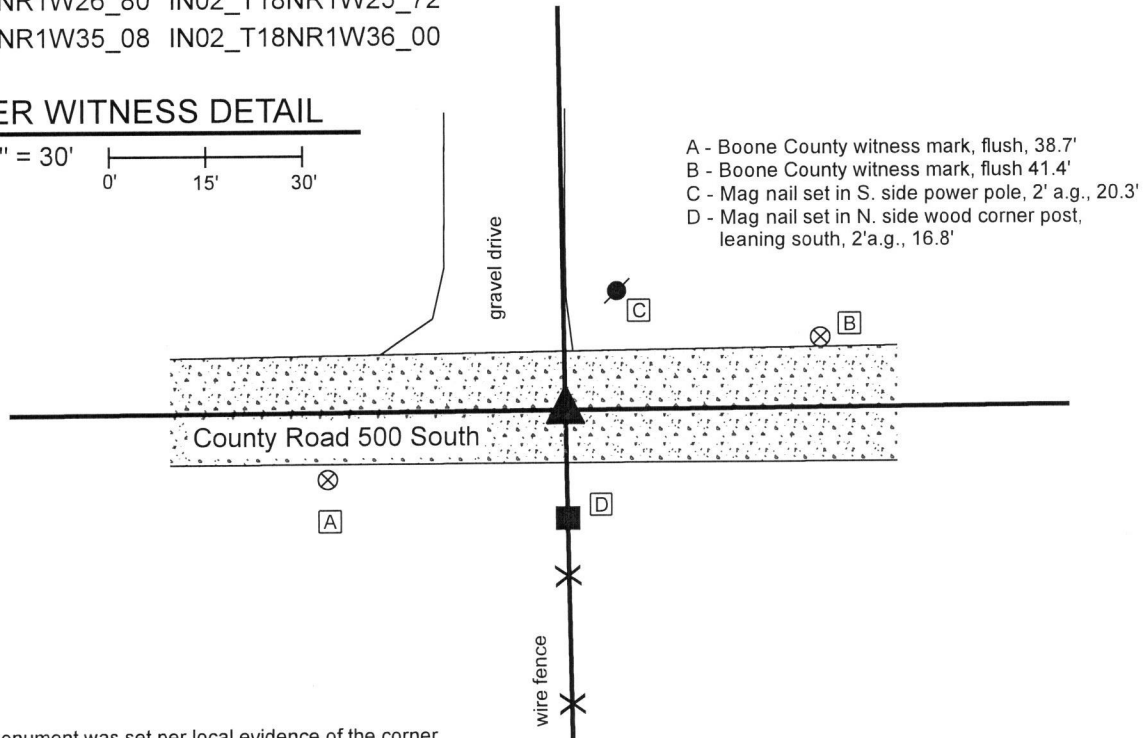
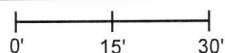
Indiana tie card references:

IN02_T18NR1W26_80 IN02_T18NR1W25_72

IN02_T18NR1W35_08 IN02_T18NR1W36_00

CORNER WITNESS DETAIL

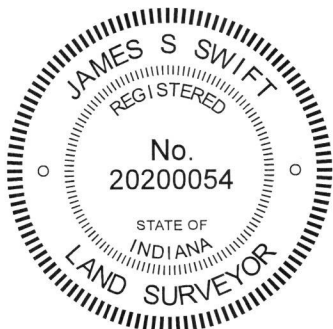
SCALE 1" = 30'



The Harrison monument was set per local evidence of the corner.

A BCS record dated September 8-12, 1837 (date noted in book as more likely to be 1857) states, with respect to this corner, "Reestablished. Set Rock 10x14." No recent BCS tie cards were found referencing this corner. A survey by Ronald E. Wharry, LS #S0420 recorded as Instrument 2017007960 in the Office of the Boone County Recorder shows the corner as being 18.00 feet north of a headpost on the south side of County Road 500 South but shows no monument set or found at the corner.

This corner was excavated on April 22, 2019. Prior to excavation, no metal or other artificial monuments were found marking the corner. The estimated position of the corner was established per the evidence of the physical roadway of County Road 500 South and an ancient fence bearing south from said County Road. The intersection point of the road and fence fits well with the relative positions of surrounding corners and evidence. Excavation was centered on a point 1 rod (16.5 feet) north of the ancient wood end post which marks the northerly terminus of said north-south fence. Excavation of an area extending 5 feet east, 5 feet west, 3.5 feet north and 3.5 feet south of the estimated position of the corner revealed no further evidence of the corner. The road bed consists of 4 inches of a bituminous material below which is 4 inches of modern #53 road stone, below which is another 4 inches of older gravel. The presence of the modern road stone indicates substantial grading / road improvement in the recent past. The descriptions for the adjacent properties are in the form of aliquot parts descriptions. Hence, the physical evidence of the roadway and fence were held as controlling for establishing the corner. It has been observed at numerous other corners throughout the county that the most reliable dimension for using accessory evidence such as an end post on the side of a road to discover ancient evidence of a corner is that of 1 rod or 16.5 feet. This dimension was held for purposes of establishing this corner. The corner was established at 1 rod north of the base of the post at the point where the post is flush with ground level and a Harrison monument was set at this position. This position fit very well with approximate center of the physical roadway. Up to 1.5 feet of uncertainty north-south is associated unmonumented position shown on the Wharry Survey. This corner was originally established as a wood post in 1820.



Kenneth E. Hedge
Kenneth E. Hedge, County Surveyor

James S. Swift
James S. Swift, IN LS 20200054
May 22, 2019

Harrison Township

Section 26 T18N, R1W	Section 25 T18N, R1W
Section 35 T18N, R1W	Section 36 T18N, R1W