

SECTION CORNER RECORD

SW 300-000

BOONE COUNTY SURVEYOR'S OFFICE

State Plane grid coordinates NAD83 (2011):

Corner 1: North: 1729684.83 East: 3124928.56 (U.S. survey feet)

Corner 2: North: 1729838.60 East: 3124927.45 (U.S. survey feet)

Corner 1: 5/8 inch diameter rebar, 24-inches long with aluminum cap stamped "Boone County Surveyor", 11" below grade

Corner 2: Harrison, 4" disk 'Section Corner', flush

Indiana tie card references:

IN02_T18NR1E18_72 IN02_T18NR1W13_80

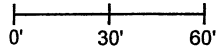
IN02_T18NR1W24_08 IN02_T18NR1E19_00

① S.E. Corner, Section 13
N.E. Corner, Section 24
T 18 N, R 1 W

② S.W. Corner, Section 18
N.W. Corner, Section 19
T 18 N, R 1 E

CORNER WITNESS DETAIL

SCALE 1" = 60'



A - Wood post, 0.98' N.W. of Harrison at corner 2

Distance between monuments:
233 links = 158.44 feet

The Harrison monument at Corner 2 was set in place of a stone found. The rebar with cap at Corner 1 was set on the meridian line, as defined by Corner 2 and the standard corner 1/2 mile north, at a point 233 links from Corner 2. Both of these corners are addressed in BCS records of March 30, 1874. The record of that date pertaining to Corner 1 states "Reest. from trees. Rock 9.5 1/2.5 +." The record of that date pertaining to Corner 2 states, "Reestablished from roots of Beech. Set a Rock 16,13,4 to 7 marked +. Is 233 links North of corner, Sections 13 & 24." No recent BCS tie cards were found referencing these corners.

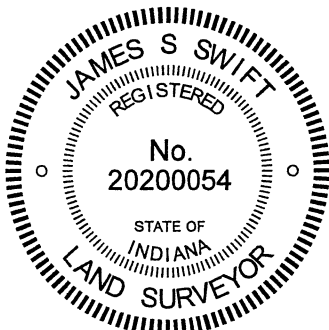
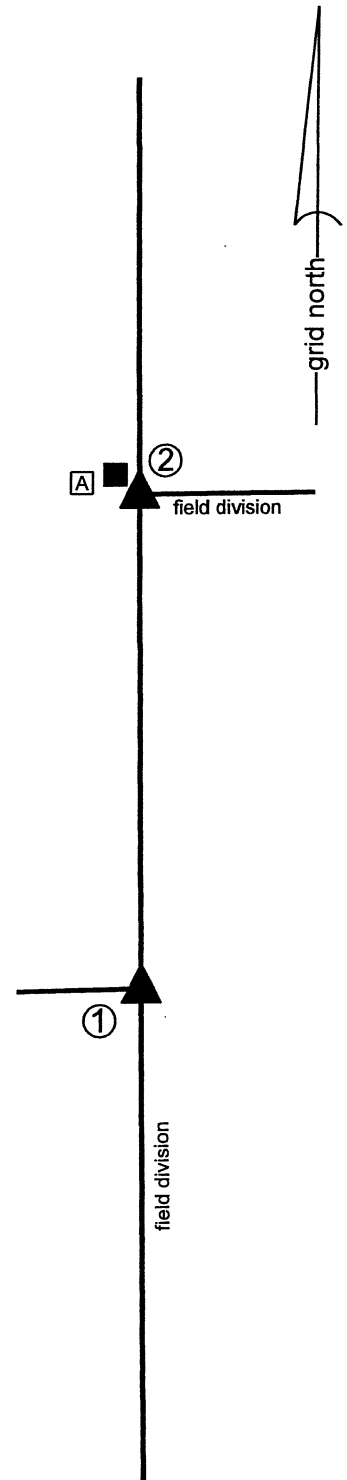
Both corners were excavated on March 10, 2021. Prior to excavation, a wood post was observed standing at the intersection of field divisions to the north, south and east. No other evidence of the corners was visible. It was observed that the position of the wood corner post was almost precisely on the westerly prolongation of a line connecting the north quarter corner and northeast corner of section 19.

Excavation in the vicinity of the wood post revealed the base of another, presumably older, wood corner post east of and adjacent to the standing post. The stone described in the 1874 record for Corner 2 was found at 8 inches deep, immediately south of and adjacent to the base of the old wood post. The stone was vertical and oriented in cardinal directions, as found, with the top of the rock being flat, horizontal and clearly oriented in the east-west dimension. The east edge of the stone was found to be approximately 5 inches wide while the west edge of the stone was 7 inches wide. The stone measured 13 inches east west by 14 inches tall, as measured vertically, and 16 inches, as measured diagonally. No marks were observed on the top of the stone. However, when the stone was removed from the ground, a distinct etched "+" mark was clearly visible on the bottom of the stone. Typically, these marks are found at the top or sides of the stones. Either the stone was installed upside-down in 1874 or the stone has been removed and replaced in that orientation. No other evidence that it may have been moved or disturbed was observed.

Excavation of a position 233 links (158.44 feet) south of the found stone revealed another stone and the base of an old cedar corner post. The base of the post was found at 11 inches deep, at precisely 233 links south of the stone found at Corner 2. The found stone was 1 foot further south and slightly east. This stone was found at the surface of the field. It did not match the dimensions called in the 1874 record and appeared that it could be easily moved. The stone called as marking Corner 1 in the 1874 record was not found. It is noted that it was rather small and that the base of the post was found several inches deeper in the field than was the stone at Corner 1.

It is also noted that the original federal notes state that Corner 2 was established 234 links north of Corner 1, but the 1874 record specifically stipulates a separation of 233 links, which precisely matches the evidence found. The stone at Corner 2 was removed and replaced with a Harrison monument on March 10, 2021. The precise position of Corner 1 was established on the southerly prolongation of the line connecting Corner 2 and the east quarter corner of section 13 (See BCS Corner SW 250-000) at a distance of 233 links or 158.44 feet. The position falls adjacent to and east of the base of the 8-inch diameter cedar post and in-line with the north-south field division. A 24-inch length of 5/8-inch diameter rebar with metal cap stamped 'Boone County Surveyor' was set 11 inches deep on March 12, 2021.

Corner 1 was originally established as a wood post in 1819. Corner 2 was originally established as a wood post in 1820.



Kenneth E. Hedge
Kenneth E. Hedge, County Surveyor

James S. Swift
James S. Swift, IN LS 20200054
March 17, 2021

Center
Township

Section 13 T18N, R1W	Section 18 T18N, R1E
-------------------------	-------------------------

Harrison
Township

Section 24 T18N, R1W	Section 19 T18N, R1E
-------------------------	-------------------------

SECTION CORNER RECORD

SW 300-100

BOONE COUNTY SURVEYOR'S OFFICE

State Plane grid coordinates NAD83 (2011):

North: 1729602.68 East: 3119571.82 (U.S. survey feet)

Type of monument: Harrison, 4" disk 'Section Corner'

Depth: One inch below adjacent road surface

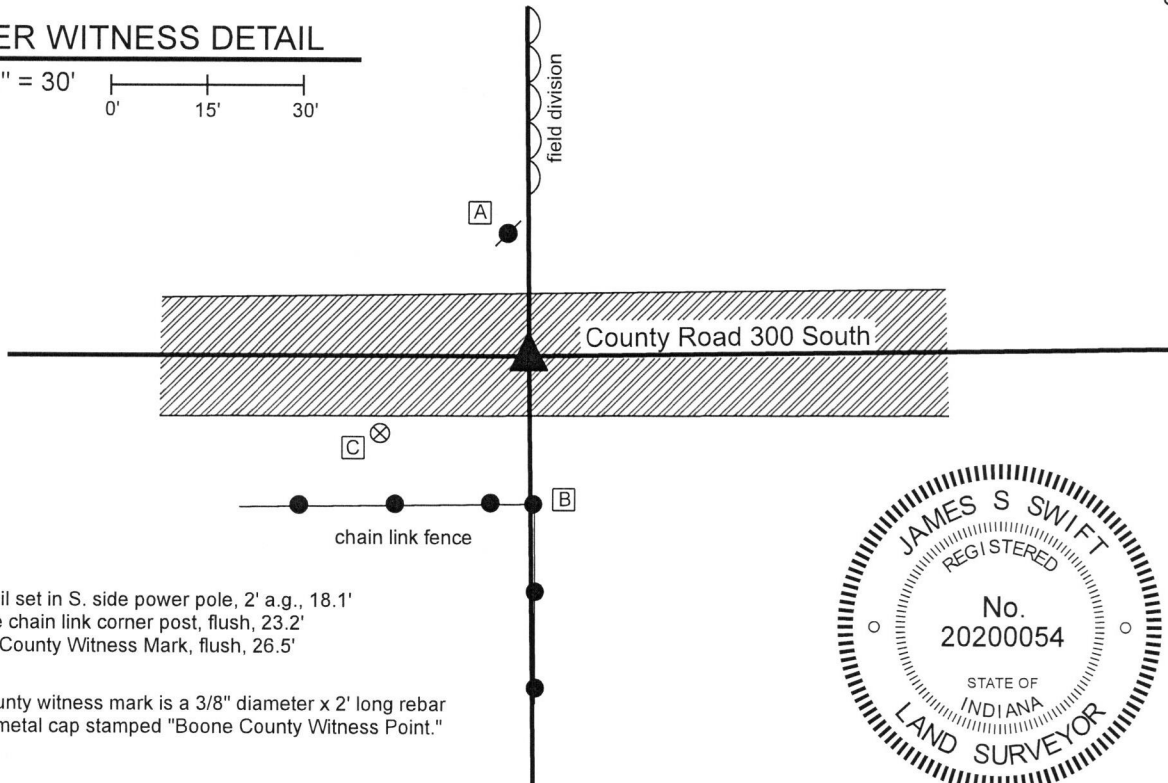
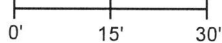
Indiana tie card references:

IN02_T18NR1W14_80 IN02_T18NR1W13_72

IN02_T18NR1W23_08 IN02_T18NR1W24_00

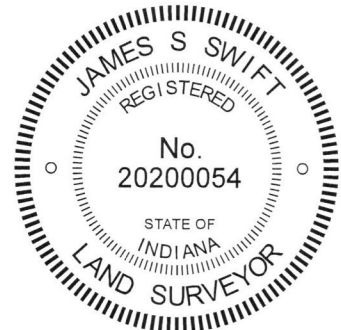
CORNER WITNESS DETAIL

SCALE 1" = 30'



- A - Mag nail set in S. side power pole, 2' a.g., 18.1'
- B - S. edge chain link corner post, flush, 23.2'
- C - Boone County Witness Mark, flush, 26.5'

Boone County witness mark is a 3/8" diameter x 2' long rebar bearing a metal cap stamped "Boone County Witness Point."



The Harrison monument was set over a vertical section of railroad rail found.

No specific descriptions of this corner were found in the BCS Surveyor's record beyond the original establishment of the corner as a wood post in 1820. The corner is referenced, but not described, in a record of June 18, 1861, indicating that some object was present from which to measure at that time. A BCS tie card dated July 24, 1967 shows the corner as stone located.

Minor excavation was performed at this corner on on June 29, 2018. Prior to excavation, a Mag nail was found at the surface. Excavation revealed a vertical section of railroad rail at 9 inches deep, approximately below the mag nail. Although the rail is not specifically mentioned in the 1967 record, it is known that the practice of BCS field crews in that era was to remove a stone, if found, and replace it with a railroad rail. No stone or other evidence was found near the rail during excavation. It is believed that the stone was removed and replaced with the rail in 1967. The rail fits with evidence of occupation to the north and south. The rail was accepted as marking the corner. The rail was left in place, two sections of 3/8" diameter rebar were driven on the sides of the rail, and a Harrison monument was set directly over the top of the rail.

Kenneth E. Hedge
 Kenneth E. Hedge, County Surveyor

James S. Swift
 James S. Swift, IN LS 20200054
 July 25, 2018

Center Township	Section 14 T18N, R1W	Section 13 T18N, R1W
Harrison Township	Section 23 T18N, R1W	Section 24 T18N, R1W

SECTION CORNER RECORD

SW 350-000

BOONE COUNTY SURVEYOR'S OFFICE

State Plane grid coordinates NAD83 (2011):

Corner 1: North: 1727033.49 East: 3124943.44 (U.S. survey feet)

Witness to Corner 1: North: 1727033.89 East: 3124943.83 (U.S. survey feet)

Corner monument: wood corner post (Corner 1 only)

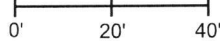
Witness monument: 5/8" rebar with metal cap stamped 'Boone County Surveyor'

Indiana tie card references:

IN02_T18NR1W21_44 IN02_T18NR1W22_36

CORNER WITNESS DETAIL

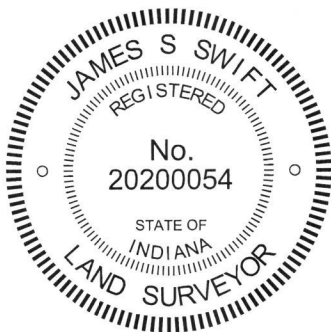
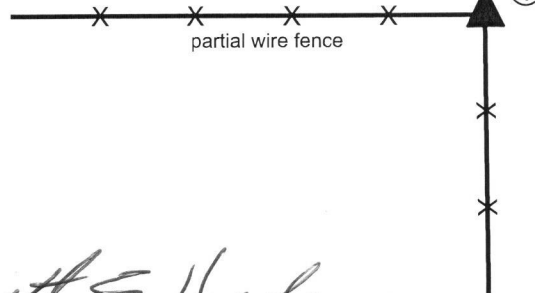
SCALE 1" = 40'



- ① East Quarter Corner
Section 24
T 18 N, R 1 W
Wood Corner Post
- ② West Quarter Corner
Section 19
T 18 N, R 1 E
Exact position not determined,
Shown for reference only

The wood corner post marking Corner 1 is witnessed by a 5/8" diameter rebar with metal cap stamped 'Boone County Surveyor' at the northeast corner of the post. The post represents the corner. The rebar is a witness monument. No other reference ties are provided.

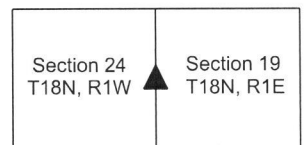
The wood corner post at Corner 1 was found in place. No specific descriptions of these corners were found in the BCS Surveyor's record beyond the original establishment of Corner 1 in 1819 and Corner 2 in 1820. The wood corner post at Corner 1 was found standing in place in October 2016. At that time, excavation was performed in the immediate vicinity of the post. Several rocks were found around the post, none of which could be positively identified as a purposely set corner monument. The post is at the intersection of ancient fencing to the north, south and west. No hard evidence of Corner 2 was found. A section of north-south fence amidst a dense tree line terminates in the vicinity of Corner 2, as computed at the computed average closing distance of 211 links (139.3 feet), and an east-west field division is visible bearing east from the vicinity of the corner but the standing fence has been removed and a large pile of dirt and debris was found in the immediate vicinity Corner 2. The position of the post at Corner 1 post fits well with the relative positions of evidence other adjacent corners. A 5/8 inch rebar with an orange cap, markings illegible, was found 3.2 feet east of the corner post. No recorded survey was found which references the rebar. It is not known whether the rebar is intended to mark the corner or act as a witness thereof. The wood corner post was accepted as the best available evidence of the corner. The post is stable, though leaning slightly to the southwest. A 5/8 inch rebar with metal cap stamped 'Boone County Surveyor' was set at the northeast edge of the post as a witness monument. The center of the post is held as the specific location of the corner, 0.4 foot south and 0.4 foot west of the rebar. The precise position of Corner 2 will be determined after confirmation of the position of the standard corner approximately 1/2 mile north.



Kenneth E. Hedge
Kenneth E. Hedge, County Surveyor

James S. Swift
James S. Swift, IN LS 20200054
April 30, 2019

Harrison Township



SECTION CORNER RECORD

BOONE COUNTY SURVEYOR'S OFFICE

SW 400-000

- ① S.E. Corner, Section 24
N.E. Corner, Section 25
T 18 N, R 1 W
 - ② S.W. Corner, Section 19
N.W. Corner, Section 30
T 18N, R 1 E
- Distance between monuments:
124.08' (188 links)

State Plane grid coordinates NAD83 (2011):

Corner 1: North: 1724387.67 East: 3124968.43 (U.S. survey feet)

Corner 2: North: 1724511.75 East: 3124967.30 (U.S. survey feet)

Type of monument: Harrison, 4" disk 'Section Corner'

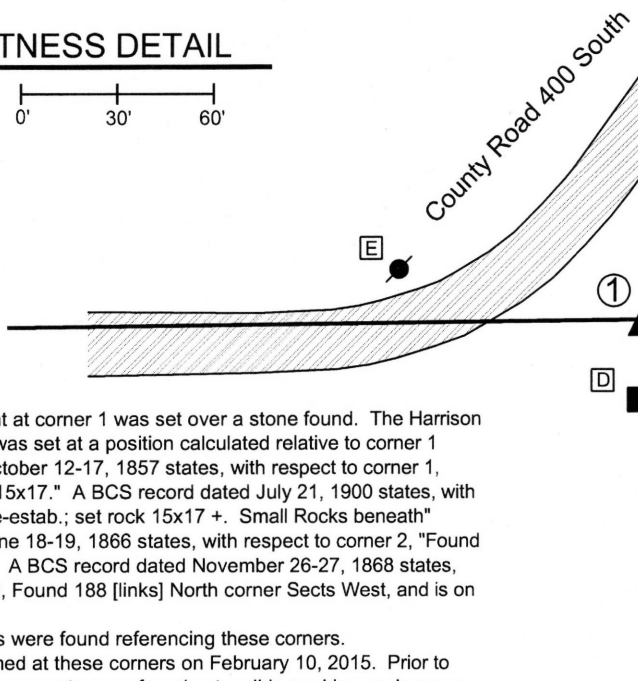
Depth: Flush with adjacent ground

Indiana tie card references:

IN02_T18NR1W24_80 IN02_T18NR1E14_72
IN02_T18NR1W25_08 IN02_T18NR1E23_00

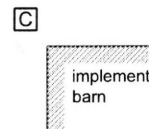
CORNER WITNESS DETAIL

SCALE 1" = 60'



- A - Mag nail set in S. side power pole, 2' a.g.
185.0' to corner 1, 65.0' to corner 2
- B - Mag nail set in S. side power pole, 2.5' a.g.
143.8' to corner 1, 51.6' to corner 2
- C - N.W. corner of foundation, metal implement barn
88.8' to corner 1, 200.2' to corner 2
- D - Mag nail set in N. side, wood post, 0.8' a.g.
22.2' to corner 1, 146.1' to corner 2
- E - Mag nail set in E. side power pole, 2' a.g.
77.2' to corner 1, 131.3' to corner 2

Branaman Barn and Implement lot



The Harrison monument at corner 1 was set over a stone found. The Harrison monument at corner 2 was set at a position calculated relative to corner 1. A BCS record dated October 12-17, 1857 states, with respect to corner 1, "Reestablished. Rock 15x17." A BCS record dated July 21, 1900 states, with respect to corner 1, "Re-estab.; set rock 15x17 +. Small Rocks beneath" A BCS record dated June 18-19, 1866 states, with respect to corner 2, "Found from Burr Oak (down)." A BCS record dated November 26-27, 1868 states, with respect to corner 2, Found 188 [links] North corner Sects West, and is on East side of a Hickory."

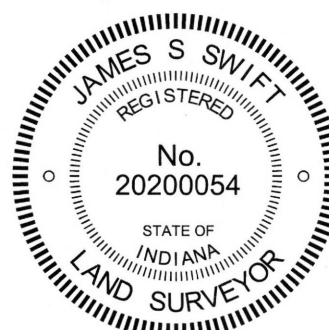
No recent BCS tie cards were found referencing these corners.

Excavation was performed at these corners on February 10, 2015. Prior to excavation, Harrison monuments were found ostensibly marking each corner. The two monuments were found to be located exactly 188 links (124.08 feet) apart from each other. The source of the monuments is not known, though it is likely that they were set by representatives of the former Anderson & Associates in approximately 2005. Excavation at corner 1 yielded a stone found at 8 inches deep. The stone matched the 15x17 inch dimensions called in the 1857 and 1900 record. As found, the stone was mostly vertical, though leaning slightly to the northwest. A piece of wire was found partially wrapped around the stone. The wire appeared to be serving a purpose of holding the stone in a vertical orientation, perhaps while the surrounding ground was refilled. The stone fit well with the evidence of the line to the west, in the form of the center of County Road 400 South, and was slightly east of the old end post to the south. No specific marks were found on the stone, though it is noted that the stone had a rough surface and marks are often difficult to detect on such rocks. A smaller rock (5x7x8) was found nearby, but not underneath the stone. A possible explanation for the fact that the smaller rock was not underneath the primary stone would be that at some point excavation activities in this area disturbed the ground. Perhaps the primary stone and smaller rocks were all removed and only the primary stone replaced. In the field, this possibility appeared to be supported by the curious piece of wire which appeared to have held the stone in a vertical orientation at some point. Excavation in the vicinity of corner 2 yielded no further evidence of that corner. The 188 link offset, being the original federal offset and confirmed by the BCS records, was held for the separation between the corners. Corner 2 was established on the range line, as defined by the stone at corner 1 and a wood post at or near to the the standard corner 1/2 mile north. A Harrison monument was set at this position.

Corner 1 was originally established as a wood post in 1819. Corner 2 was originally established as a wood post in 1820.

Kenneth E. Hedge
Kenneth E. Hedge, County Surveyor

James S. Swift
James S. Swift, IN LS 20200054
March 28, 2016



Harrison Township

Section 24 T18N, R1W	Section 19 T18N, R1E
Section 25 T18N, R1W	Section 30 T18N, R1E

SECTION CORNER RECORD

SW-400-100

BOONE COUNTY SURVEYOR'S OFFICE

State Plane grid coordinates NAD83 (2011):
North: 1724326.48 East: 3119633.20 (U.S. survey feet)

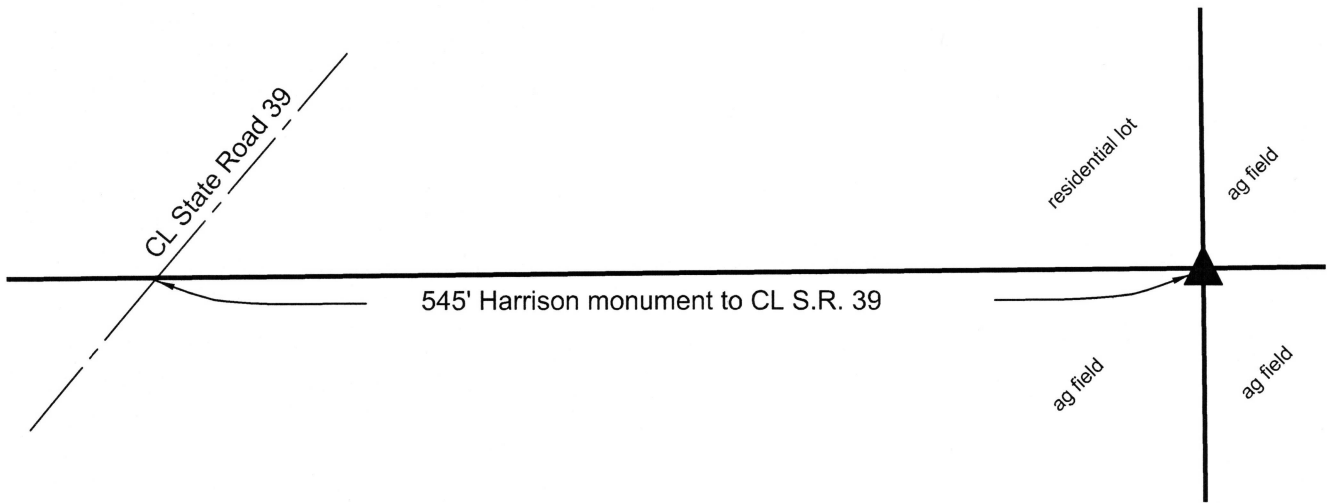
Type of monument: Harrison, 4" disk 'Section Corner'
Depth: One inch above adjacent ground

Indiana tie card references:
IN02_T18NR1W23_80 IN02_T18NR1W24_72
IN02_T18NR1W25_08 IN02_T18NR1W25_00



CORNER WITNESS DETAIL

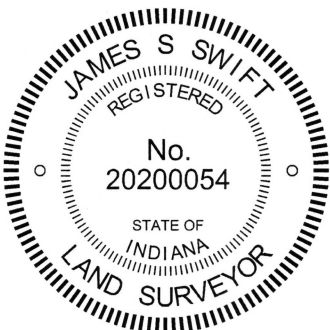
SCALE 1" = 100'



The Harrison monument was set in place of a collection of numerous small rocks found below grade. A BCS record dated October 12-16, 1857 states, with respect to this corner, "Reestablished. Rock 15x20." No recent BCS tie cards were found referencing this corner.

This office assisted Deckard Engineering/Surveying with section corner perpetuation in this vicinity during November, 2015. The corner 1/2 mile south of the subject corner (SW 150-400) was excavated and monumented by this office at that time. The subject corner was excavated by Deckard in the same time period. Calculating the position relative to proximate corners and relevant deed descriptions and evidence, the Deckard crew found substantial evidence of the corner in the form of a grouping of numerous small rocks and held the position of the corner. That position for the corner was confirmed by this office. The position of the corner held by Deckard works well with proximate corners and local evidence in the form of the east-west field division and remnants of fence to the east and west as well as evidence of occupation and remnants of fence to the north. A Harrison monument was set at that position on October 13, 2016. The Deckard survey is recorded as Instrument 201600002449 in the Office of the Boone County Recorder.

This corner was originally established as a wood post in June, 1820.



Kenneth E. Hedge, County Surveyor

James S. Swift, IN LS 20200054
March 23, 2017

Harrison Township

Section 23 T18, R1W	Section 24 T18N, R1W
Section 26 T18N, R1W	Section 25 T18N, R1W

An arrow points to the intersection of Section 24 and Section 25.