

SECTION CORNER RECORD

BOONE COUNTY SURVEYOR'S OFFICE

NE 800-1000

State Plane grid coordinates NAD83 (CORS96):

North: 1789257.70 East: 3177223.13 (U.S. survey feet)

Type of monument: Harrison, 4" disk 'Section Corner'

Depth: One inch below adjacent road surface

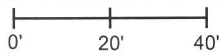
Indiana tie card references:

IN02_T20NR2E22_80 IN02_T20NR2E23_72

IN02_T20NR2E27_08 IN02_T20NR2E26_00

CORNER WITNESS DETAIL

SCALE 1" = 40'



A - Mag nail set in S.W. side power pole, 2' a.g., 92.7'

B - Boone County witness mark, flush, 16.25'

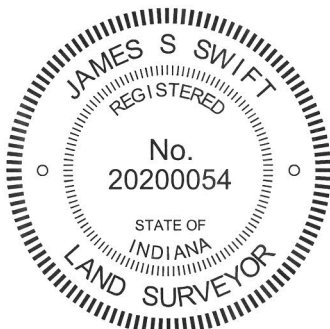
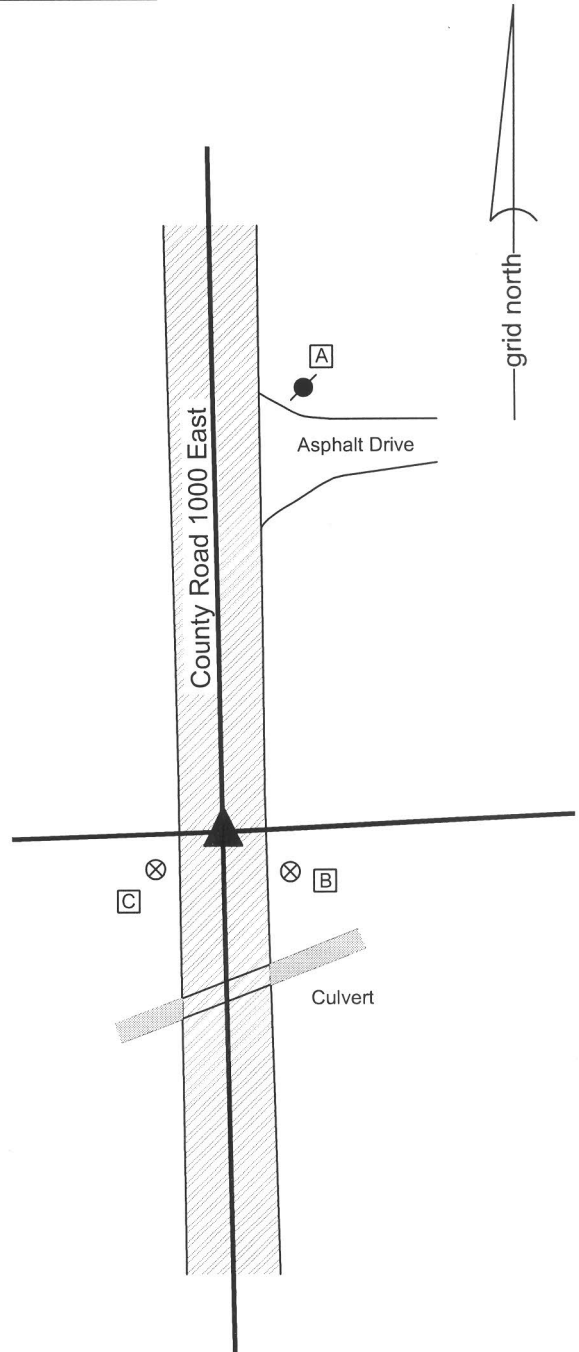
C - Boone County witness mark, flush, 15.9'

Boone County witness mark is a 3/8" diameter x 2' long rebar bearing a metal cap stamped "Boone County Witness Point."

The harrison monument was set over a stone found.

A BCS record of October 9-10, 1879 states "Reest. by running from D South 80.09 to 1/4 sec. corner between secs 26 & 27. Set two Rocks lower one 9.18.10 in + on top side. Upper one 21.4.10 in + on top." No recent BCS tie cards were found referencing this corner.

Excavation was performed at this corner on October 15, 2013. Prior to excavation, a 1/2 inch diameter rebar was found at 4 inches deep in a hole in the asphalt. Excavation revealed fragments of a wood stake found at 24 inches deep, south of the rebar. Further excavation revealed a stone found at 31 inches deep. The stone was fully embedded in the clay layer below the road bed. At most corners, the corner stones are found to be embedded in the clay layer with the top of the stone either at the top of the clay layer or protruding a few inches into the base of the road bed. At this corner the stone was approximately 1 foot deep in the clay layer. This is not typical but may be explained by the fact that the corner is immediately north of and adjacent to an open ditch. Early dredging of the ditch before the road bed was fully established could have resulted in substantial amounts of clay placed above the stone. It is notable that the clay layer begins at 18 inches from the surface of the road, which elevation is actually higher than the surrounding ground. The top 5 inches of the stone were exposed, at which point it measured approximately 9 inches N-S by 5 inches E-W. A distinct etched "+" mark was visible on the east side of the stone, 2 inches from the top. Probing indicated that another stone was situated directly below the exposed stone, at approximately 2 feet from the top of the top stone. With the etched mark and the dimensions approximating those described in the 1879 record, the stone was accepted as marking the corner. A harrison monument was set directly above the top, center of the stone, in line with the etched "+" mark on the east side. The rebar, removed during excavation, had been one foot north of the stone. This corner was originally established as a wood post in 1821.



Kenneth E. Hedge
Kenneth E. Hedge, County Surveyor

James S. Swift
James S. Swift, IN LS 20200054
February 5, 2015

Marion Township

Section 22 T20N, R2E	Section 23 T20N, R2E
Section 27 T20N, R2E	Section 26 T20N, R2E

PHOTOGRAPHIC DOCUMENTATION

Date of photography: October 15, 2013

View of the stone from above and west.



Close up of the stone, showing the etched mark on the west side.



View of the stone from above and north.



View from above the stone, looking north along County Road 1000 East.



For details and documentation, refer to related sheet "Section Corner Record."

SECTION CORNER RECORD

NE 800-1050

BOONE COUNTY SURVEYOR'S OFFICE

State Plane grid coordinates NAD83 (2011):

North: 1789332.25 East: 3179877.79 (U.S. survey feet)

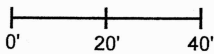
Type of monument: Harrison, 4" disk 'Section Corner'

Depth: Three inches above adjacent grade

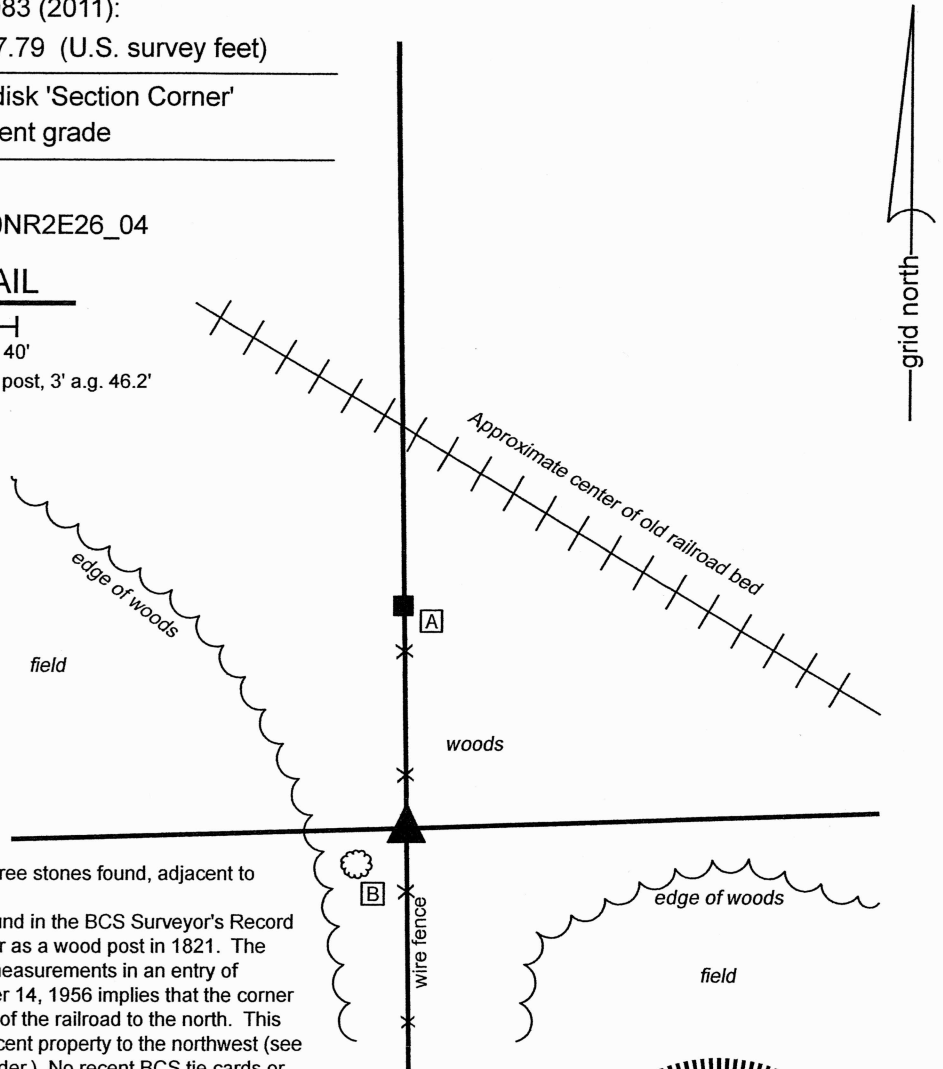
Indiana tie card references:

IN02_T20NR2E23_76 IN02_T20NR2E26_04

CORNER WITNESS DETAIL

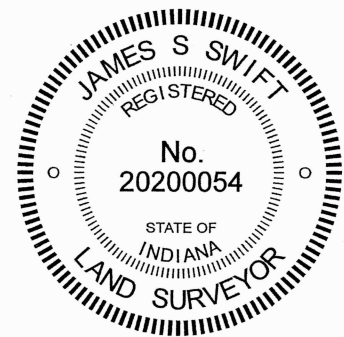
SCALE 1" = 40' 

A - Mag nail set in S.W. corner wood corner post, 3' a.g. 46.2'
B - N. edge, 11" diameter oak tree, 12.9'



The Harrison Monument was set in place of three stones found, adjacent to remains of an old wood corner post. No specific descriptions of this corner were found in the BCS Surveyor's Record beyond the original establishment of the corner as a wood post in 1821. The corner is mentioned as the terminal point for measurements in an entry of August 20-22, 1860. An entry dated December 14, 1956 implies that the corner is 48.0 feet south of the southerly right-of-way of the railroad to the north. This figure is also reflected in the deed for the adjacent property to the northwest (see Instrument 2019006208, Boone County Recorder.) No recent BCS tie cards or surveys recorded in the Office of the Boone County Recorder were found referencing this corner.

Excavation was performed at this corner on November 8, 2023. The wood remnants of the old wood corner post were found by computing an estimated position for the corner based on the westerly prolongation of fence evidence from 1/2 mile to 1/4 mile west corner and also based on the easterly prolongation of fence evidence from 1/2 mile to 1/4 mile east of the corner. This evidence, as prolonged east and west, respectively, matched remarkably well, and remnants of an old wood corner post were found slightly south of the computed position. The post is fully on the ground and mostly rotten, but the evidence of the wire found amidst the remnants of the post clearly indicated that this was a corner post. Excavation around the post revealed three rocks on top of each other on the north side of the post. The lower stone may have been intended as a brace rock, but the upper two rocks, stacked directly on top of each other, clearly were not bracing the post. The found stones at the north edge of the stone fell approximately one foot south of the computed position, based on fences to the east and west, and worked very well with the 48-foot deed call with respect to remnants of fence found evidently marking the southerly R/W of the railroad. The stones were removed and a Harrison monument was set in place of all three stones on November 8, 2023.



Marion Township

Section 23
T20N, R2E

Section 26
T20N, R2E

Carol Cunningham, County Surveyor

November 14, 2023

James S. Swift, IN LS 20200054

SECTION CORNER RECORD

NE 800-1100

BOONE COUNTY SURVEYOR'S OFFICE

State Plane grid coordinates NAD83 (2011):

North: 1789418.53 East: 3182534.38 (U.S. survey feet)

Type of monument: Harrison, 4" disk 'Section Corner'

Depth: Three inches above adjacent ground

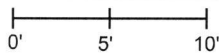
Indiana tie card references:

IN02_T20NR2E23_80 IN02_T20NR2E24_72

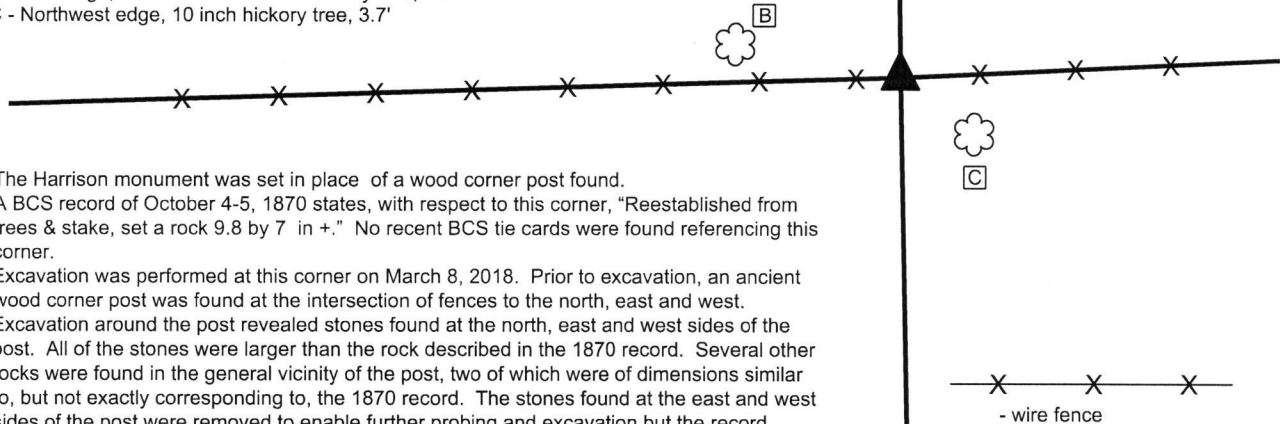
IN02_T20NR2E26_08 IN02_T20NR2E25_00

CORNER WITNESS DETAIL

SCALE 1" = 10'

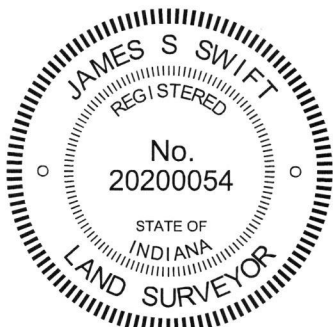


- A - Mag nail set in S. edge wood post, 0.5' a.g., 7.7'
- B - East edge, 11 inch diameter wild cherry tree, 7.8'
- C - Northwest edge, 10 inch hickory tree, 3.7'



The Harrison monument was set in place of a wood corner post found. A BCS record of October 4-5, 1870 states, with respect to this corner, "Reestablished from trees & stake, set a rock 9.8 by 7 in +." No recent BCS tie cards were found referencing this corner.

Excavation was performed at this corner on March 8, 2018. Prior to excavation, an ancient wood corner post was found at the intersection of fences to the north, east and west. Excavation around the post revealed stones found at the north, east and west sides of the post. All of the stones were larger than the rock described in the 1870 record. Several other rocks were found in the general vicinity of the post, two of which were of dimensions similar to, but not exactly corresponding to, the 1870 record. The stones found at the east and west sides of the post were removed to enable further probing and excavation but the record stone was not found. The stone at the north edge of the post was found to be at least 18 inches tall by 18 inches E-W by 12 inches N-S. The south edge of the stone was vertical. The stone appeared to be acting more as a substantial brace for the post than as a cornerstone. With no stones found which could be positively identified as marking the corner, the actual corner post was accepted as marking the corner. The position of the post fits well with the relative positions of proximate corners and represents the best available evidence of the corner. The post, as found, was rotted off at ground level and was suspended vertically as supported by the attached wire and wood braces. For the purposes of establishing a monument, the west brace was removed, the E-W wire on the south side of the post was detached, and the post was shifted approximately 1 foot to the east. The post was left standing vertically, as supported by the wood brace and wire fence to the north. A Harrison monument was set in the position of the center of the post, as originally found. The subterranean concrete portion of the monument is anchored to the substantial rock with the vertical south edge immediately to the north of the corner.



Kenneth E. Hedge
 Kenneth E. Hedge, County Surveyor

James S. Swift
 James S. Swift, IN LS 20200054
 March 14, 2018

Marion Township

Section 23 T20N, R2E	Section 24 T20N, R2E
Section 26 T20N, R2E	Section 25 T20N, R2E

SECTION CORNER RECORD

NE 850-1000

BOONE COUNTY SURVEYOR'S OFFICE

State Plane grid coordinates NAD83 (2011):

North: 1791902.28 East: 3177172.50 (U.S. survey feet)

Type of monument: Plug in monument box, INDOT Type B

Depth: Flush with adjacent road surface

Indiana tie card references:

IN02_T20NR2E22_44 IN02_T20NR2E23_36

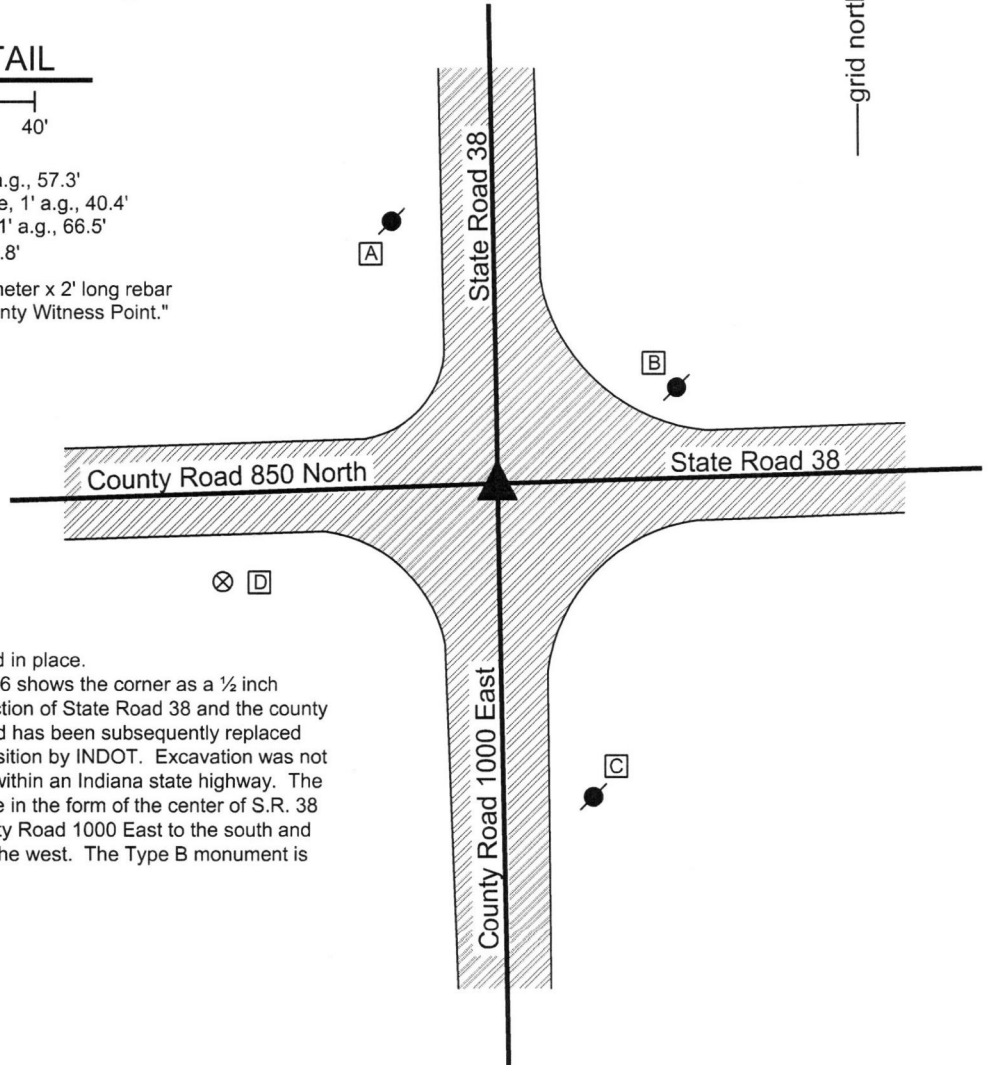


CORNER WITNESS DETAIL

SCALE 1" = 40'

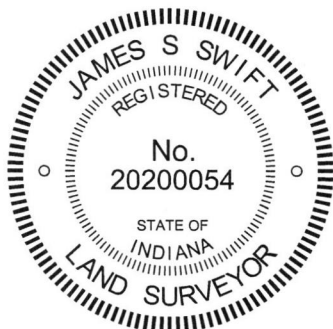
- A - Mag nail set in S. side power pole, 2' a.g., 57.3'
- B - Mag nail found in S.W. side power pole, 1' a.g., 40.4'
- C - Mag nail found in N. side power pole, 1' a.g., 66.5'
- D - Boone County witness mark, flush, 60.8'

Boone County witness mark is a 3/8" diameter x 2' long rebar bearing a metal cap stamped "Boone County Witness Point."



The INDOT Type B monument was found in place.

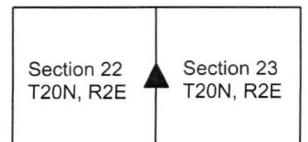
A BCS tie card dated September 18, 2006 shows the corner as a 1/2 inch diameter iron rod in center of the intersection of State Road 38 and the county roads to the south and west. The iron rod has been subsequently replaced with a Type B monument in the same position by INDOT. Excavation was not performed at this corner, as it is located within an Indiana state highway. The Type B monument fits with local evidence in the form of the center of S.R. 38 to the north and east, the center of County Road 1000 East to the south and the center of County Road 850 North to the west. The Type B monument is held as marking the corner.



Kenneth E. Hedge, County Surveyor

James S. Swift, IN LS 20200054
March 23, 2017

Marion Township



SECTION CORNER RECORD

NE 850-1100

BOONE COUNTY SURVEYOR'S OFFICE

State Plane grid coordinates NAD83 (2011):

North: 1792060.58 East: 3182493.71 (U.S. survey feet)

Type of monument: Plug in monument box, INDOT Type B

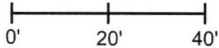
Depth: Flush with adjacent road surface

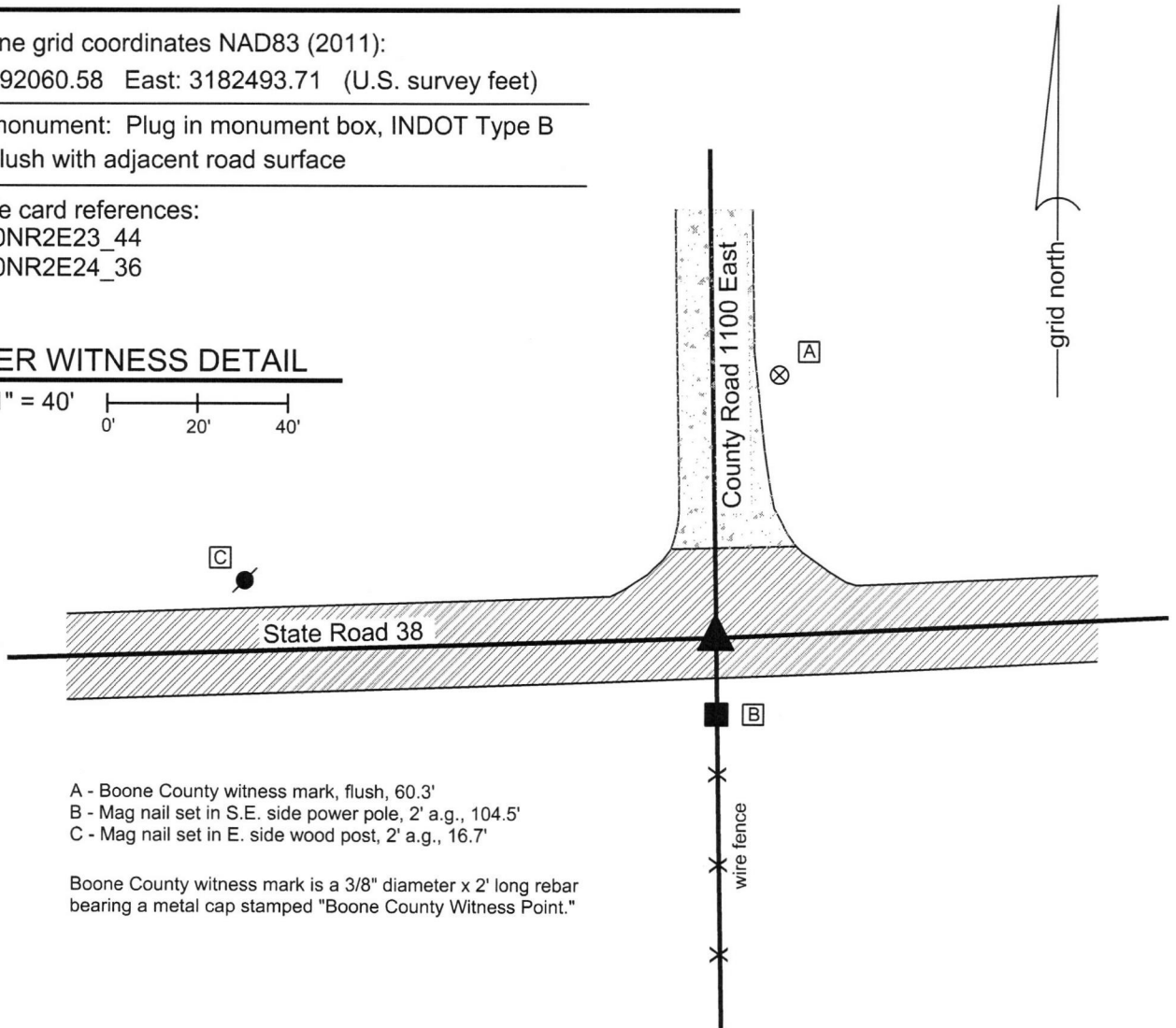
Indiana tie card references:

IN02_T20NR2E23_44

IN02_T20NR2E24_36

CORNER WITNESS DETAIL

SCALE 1" = 40' 

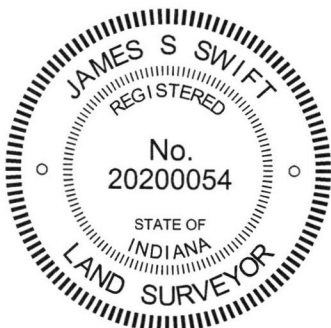


- A - Boone County witness mark, flush, 60.3'
- B - Mag nail set in S.E. side power pole, 2' a.g., 104.5'
- C - Mag nail set in E. side wood post, 2' a.g., 16.7'

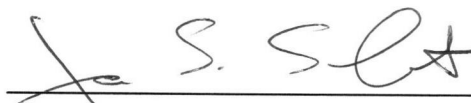
Boone County witness mark is a 3/8" diameter x 2' long rebar bearing a metal cap stamped "Boone County Witness Point."

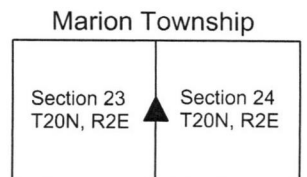
The INDOT Type B monument was found in place.

A BCS tie card dated September 18, 2006 shows the corner as railroad spike 2 inches down at the intersection of State Road 38 and County Road 1100 East. The railroad spike has been subsequently replaced with a Type B monument in the same position by INDOT. Excavation was not performed at this corner, as it is located within an Indiana state highway. The Type B monument fits with local evidence in the form of the center of S.R. 38 to the east and west, the center of County Road 1100 East to the north, and an existing fence to the south. The Type B monument is held as marking the corner.




Kenneth E. Hedge, County Surveyor


James S. Swift, IN LS 20200054
March 23, 2017



SECTION CORNER RECORD

NE 900-1000

BOONE COUNTY SURVEYOR'S OFFICE

State Plane grid coordinates NAD83 (2011):

North: 1794552.30 East: 3177124.62 (U.S. survey feet)

Type of monument: Plug in monument box, INDOT Type B

Depth: Flush with adjacent road surface

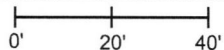
Indiana tie card references:

IN02_T20NR2E15_80 IN02_T20NR2E14_72

IN02_T20NR2E22_08 IN02_T20NR2E23_00

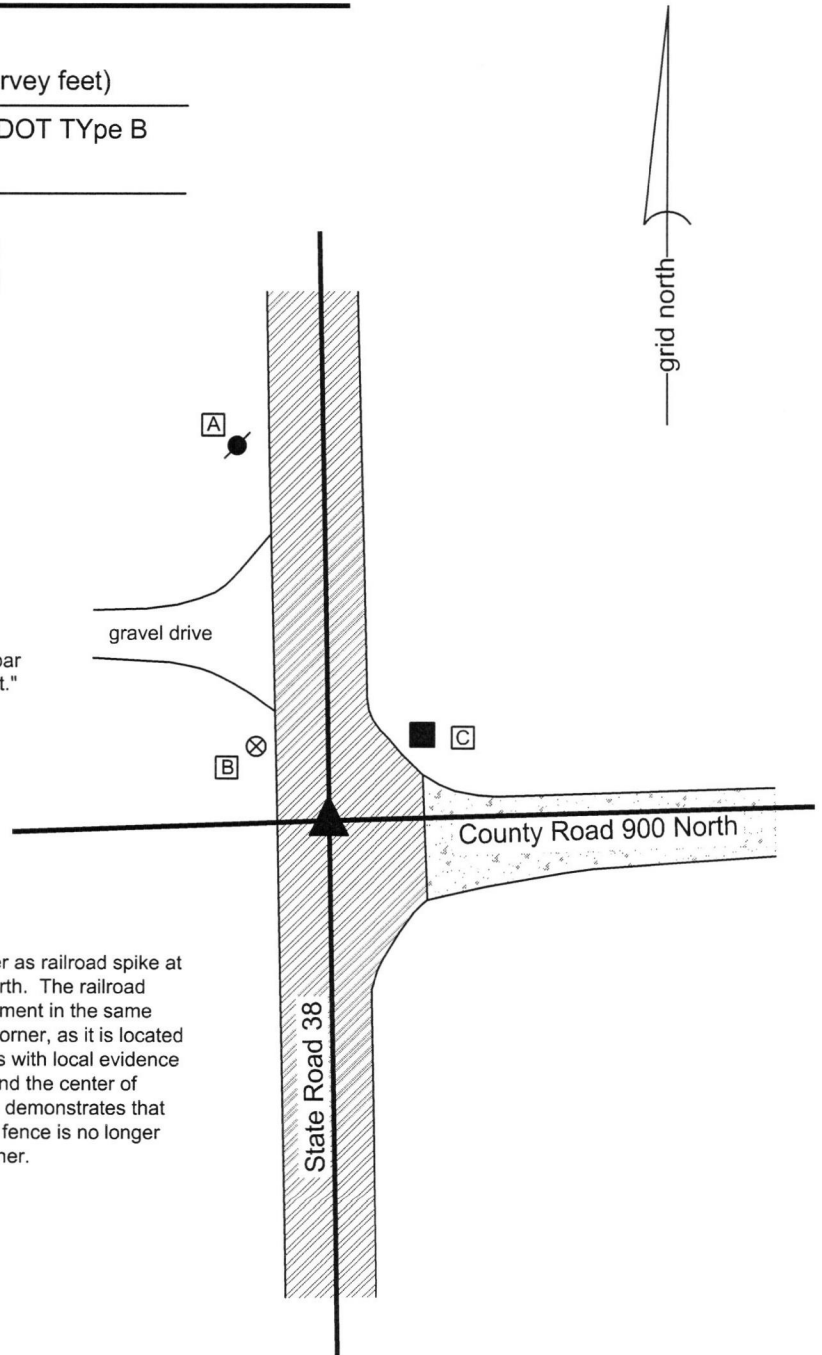
CORNER WITNESS DETAIL

SCALE 1" = 40'



- A - Mag nail set in E. side power pole, 2' a.g., 80.1'
- B - Boone County witness mark, flush, 21.6'
- C - Mag nail set in S. side wood post, 2' a.g., 24.5'

Boone County witness mark is a 3/8" diameter x 2' long rebar bearing a metal cap stamped "Boone County Witness Point."



The INDOT Type B monument was found in place. A BCS tie card dated September 18, 2006 shows the corner as railroad spike at the intersection of State Road 38 and County Road 900 North. The railroad spike has been subsequently replaced with a Type B monument in the same position by INDOT. Excavation was not performed at this corner, as it is located within an Indiana state highway. The Type B monument fits with local evidence in the form of the center of S.R. 38 to the north and south and the center of County Road 900 North to the east. The 2006 tie card also demonstrates that the railroad spike was in line with a fence to the west. This fence is no longer present. The Type B monument is held as marking the corner.



Kenneth E. Hedge
Kenneth E. Hedge, County Surveyor

James S. Swift
James S. Swift, IN LS 20200054
March 23, 2017

Marion Township

Section 15 T20N, R2E	Section 14 T20N, R2E
Section 22 T20N, R2E	Section 23 T20N, R2E

SECTION CORNER RECORD

NE 900-1050

BOONE COUNTY SURVEYOR'S OFFICE

State Plane grid coordinates NAD83 (CORS96):

North: 1794634.66 East: 3179777.80 (U.S. survey feet)

Type of monument: Harrison, 4" disk 'Section Corner'

Depth: six inches below adjacent gravel road surface.

Indiana tie card references:

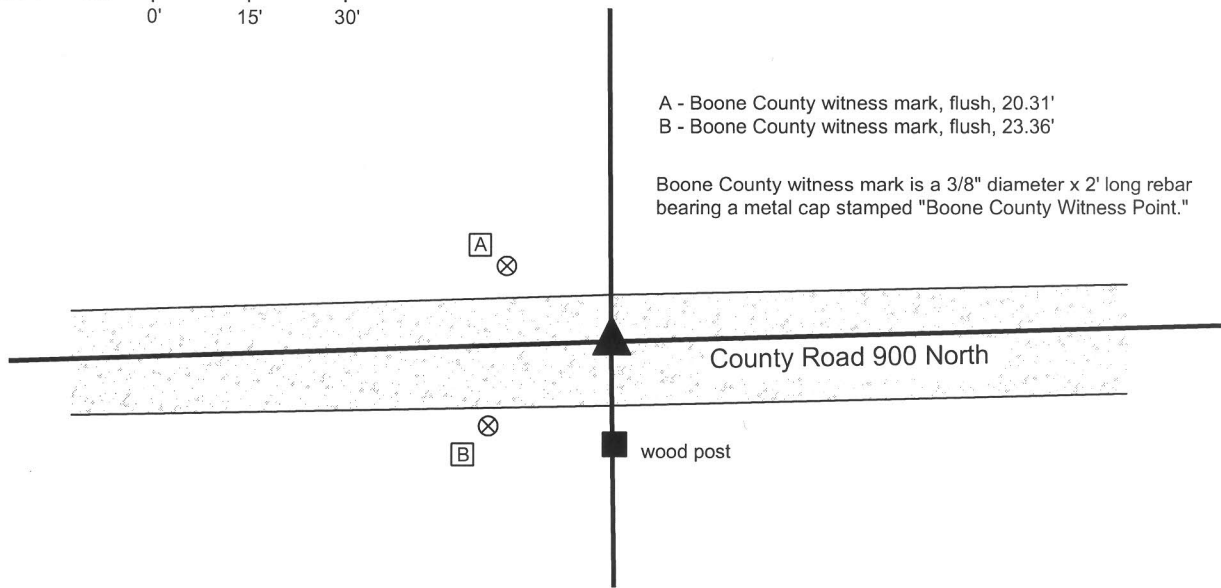
IN02_T20NR2E14_76

IN02_T20NR2E23_04



CORNER WITNESS DETAIL

SCALE 1" = 30'



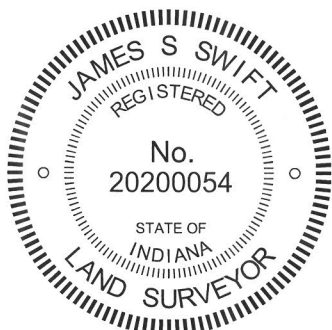
The harrison monument was set in place of a rebar found.

A BCS record of June 3-4, 1869 states "Reestablished from trees Sugar is green Oak down but here drove stake." A BCS record of September 10, 1872 states "Set a Rock 15.15.6&4 + at the Stake." A BCS tie card dated August 20, 1974 states "small stone found."

This corner was excavated on September 16, 2013. Prior to excavation a 5/8 inch diameter rebar was found disturbed at the surface of the road.

Excavation of an area extending 4 feet north, 4 feet south, 5 feet west and 16 feet east of the rebar yielded no further evidence of the corner. The rebar fit with the 1974 tie card, being in line with the post on the south side of the road. The reference to a "small stone found" does not necessarily mean the the stone described in the 1872 record was found, as that rock (15 by 15 by 6 to 4 inches) was not particulaly small. Measurement analysis indicated that the corner may be up to 12 feet east, hence the large area of excavation in the E-W dimension. The rebar does fit with local evidence in the form of the post to the south and, as shown on the 1974 tie card, the fences to both the north and south. The rebar was accepted as providing the best available evidence of the corner and was replaced with a harrison monument in the same position.

This corner was originally established as a wood post in 1821.



Kenneth E. Hedge, County Surveyor

James S. Swift, IN LS 20200054

February 5, 2015

Marion Township

Section 14
T20N, R2E

Section 23
T20N, R2E

SECTION CORNER RECORD

NE 900-1100

BOONE COUNTY SURVEYOR'S OFFICE

State Plane grid coordinates NAD83 (CORS96):

North: 1794702.88 East: 3182453.26 (U.S. survey feet)

Type of monument: Harrison, 4" disk 'Section Corner'

Depth: four inches below the surface of the gravel road.

Indiana tie card references:

IN02_T20NR2E14_80 IN02_T20NR2E13_72

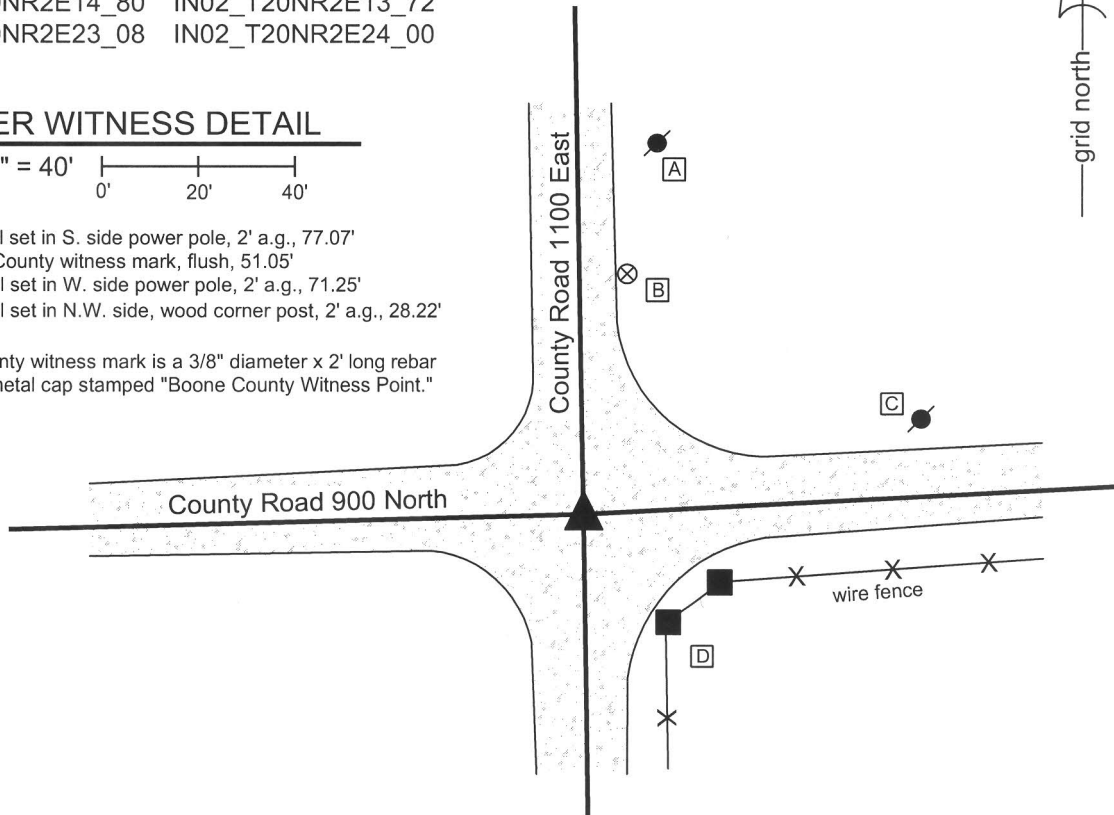
IN02_T20NR2E23_08 IN02_T20NR2E24_00

CORNER WITNESS DETAIL

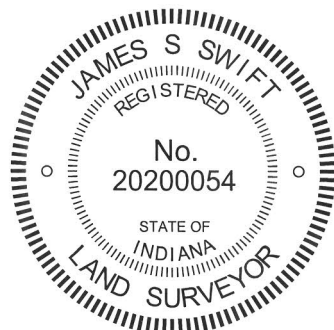
SCALE 1" = 40'
0' 20' 40'

- A - Mag nail set in S. side power pole, 2' a.g., 77.07'
- B - Boone County witness mark, flush, 51.05'
- C - Mag nail set in W. side power pole, 2' a.g., 71.25'
- D - Mag nail set in N.W. side, wood corner post, 2' a.g., 28.22'

Boone County witness mark is a 3/8" diameter x 2' long rebar bearing a metal cap stamped "Boone County Witness Point."



The harrison monument was set over a stone found.
 A BCS record of October 4-5, 1870 states "Reestablished Set two Rocks one 8.5 1/2 by 4 + Top One 18.16 by 13 in. marked +." A BCS tie card dated August 20, 1974 states "no stone found."
 This corner was excavated on September 11, 2013. Prior to excavation, a 5/8 inch diameter rebar with an orange plastic cap (markings illegible) was found 3 inches deep at the intersection of the gravel roads. Excavation revealed a stone at 12 inches deep. The stone was embedded in the clay layer below the road, protruding approximately 3 inches into the bottom of the road bed. The stone has a triangular shaped top with a long "arm" protruding toward the east. With the top 7 inches of the stone exposed, it measured 13 inches N-S by 15 inches E-W and was clearly much larger in the vertical dimension. A mark may have been present on the top of the stone but was difficult to distinguish and positively identify. The stone was accepted as being the top rock described in the 1870 record. The top 4 inches of the stone were encased in concrete and a harrison monument was set directly over the top high point / top center of the stone. The harrison monument is 8 inches tall above the stone. The rebar, removed during excavation, had been 1.2 feet north of the point held as the corner.
 This corner was originally established as a wood post in 1821.



Kenneth E. Hedge
 Kenneth E. Hedge, County Surveyor

James S. Swift
 James S. Swift, IN LS 20200054
 February 5, 2015

Marion Township

Section 14 T20N, R2E	Section 13 T20N, R2E
Section 23 T20N, R2E	Section 24 T20N, R2E

PHOTOGRAPHIC DOCUMENTATION

Date of photography: September 11, 2013

View of the stone as first exposed.



The stone washed.



View from the south, looking across the stone and north along County Road 1100 East.



View from the east, looking across the stone and west along County Road 900 North.



For details and documentation, refer to related sheet "Section Corner Record."