

SECTION CORNER RECORD

NW 200-700

BOONE COUNTY SURVEYOR'S OFFICE

State Plane grid coordinates NAD83 (2011):
North: 1756122.37 East: 3087805.07 (U.S. survey feet)

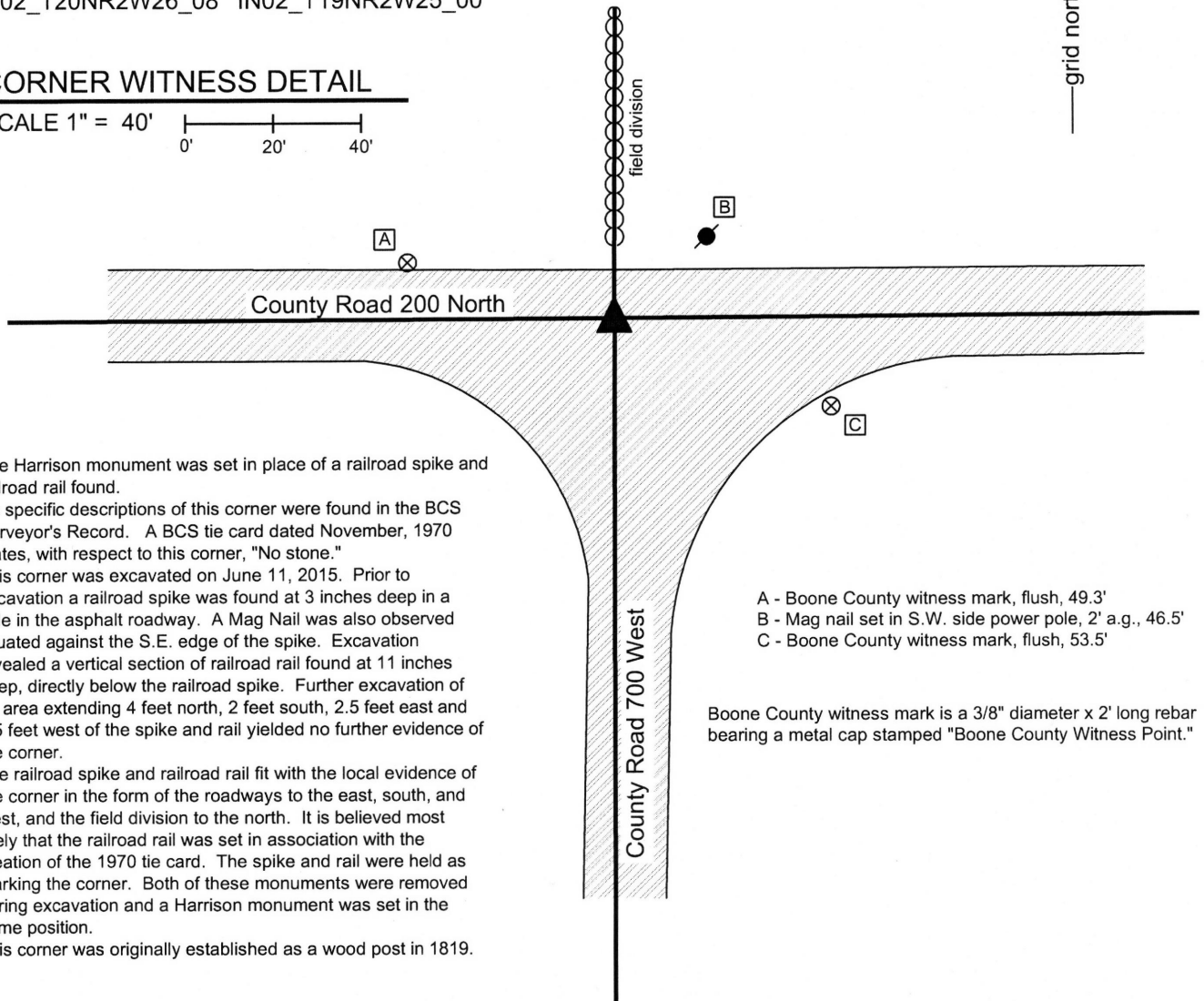
Type of monument: Harrison, 4" disk 'Section Corner'
Depth: One inch below adjacent road surface

Indiana tie card references:
IN02_T19NR2W23_80 IN02_T19NR2W24_72
IN02_T20NR2W26_08 IN02_T19NR2W25_00



CORNER WITNESS DETAIL

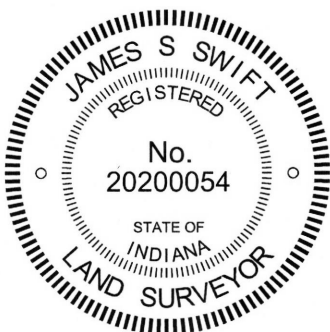
SCALE 1" = 40'
0' 20' 40'



The Harrison monument was set in place of a railroad spike and railroad rail found.
No specific descriptions of this corner were found in the BCS Surveyor's Record. A BCS tie card dated November, 1970 states, with respect to this corner, "No stone."
This corner was excavated on June 11, 2015. Prior to excavation a railroad spike was found at 3 inches deep in a hole in the asphalt roadway. A Mag Nail was also observed situated against the S.E. edge of the spike. Excavation revealed a vertical section of railroad rail found at 11 inches deep, directly below the railroad spike. Further excavation of an area extending 4 feet north, 2 feet south, 2.5 feet east and 2.5 feet west of the spike and rail yielded no further evidence of the corner.
The railroad spike and railroad rail fit with the local evidence of the corner in the form of the roadways to the east, south, and west, and the field division to the north. It is believed most likely that the railroad rail was set in association with the creation of the 1970 tie card. The spike and rail were held as marking the corner. Both of these monuments were removed during excavation and a Harrison monument was set in the same position.
This corner was originally established as a wood post in 1819.

- A - Boone County witness mark, flush, 49.3'
- B - Mag nail set in S.W. side power pole, 2' a.g., 46.5'
- C - Boone County witness mark, flush, 53.5'

Boone County witness mark is a 3/8" diameter x 2' long rebar bearing a metal cap stamped "Boone County Witness Point."



Kenneth E. Hedge
Kenneth E. Hedge, County Surveyor

James S. Swift
James S. Swift, IN LS 20200054
March 24, 2015

Jefferson Township

Section 23 T19N, R2W	Section 24 T19N, R2W
Section 26 T19N, R2W	Section 25 T19N, R2W

SECTION CORNER RECORD

NW 200-750

BOONE COUNTY SURVEYOR'S OFFICE

State Plane grid coordinates NAD83 (CORS96):

North: 1756115.38 East: 3085144.43 (U.S. survey feet)

Type of monument: Harrison, 4" disk 'Section Corner'

Depth: flush with adjacent road surface

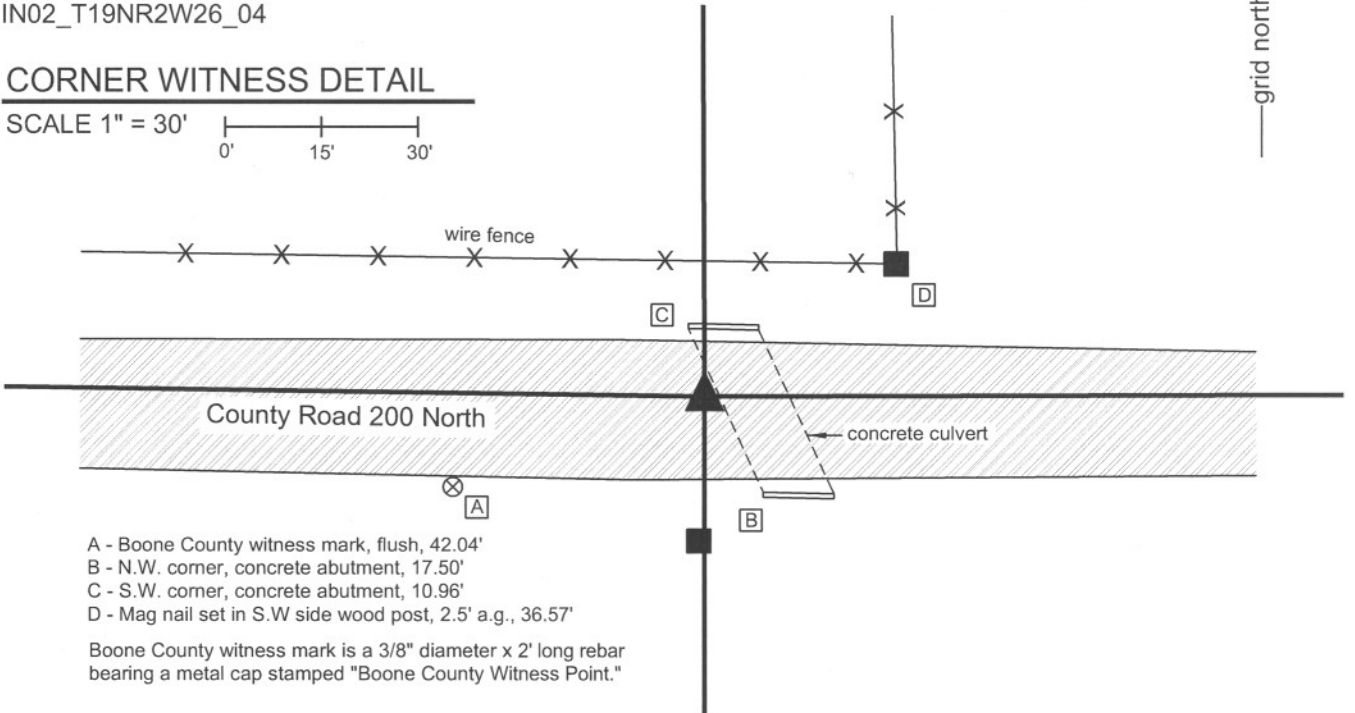
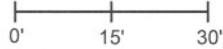
Indiana tie card references:

IN02_T19NR2W23_76

IN02_T19NR2W26_04

CORNER WITNESS DETAIL

SCALE 1" = 30'



- A - Boone County witness mark, flush, 42.04'
- B - N.W. corner, concrete abutment, 17.50'
- C - S.W. corner, concrete abutment, 10.96'
- D - Mag nail set in S.W side wood post, 2.5' a.g., 36.57'

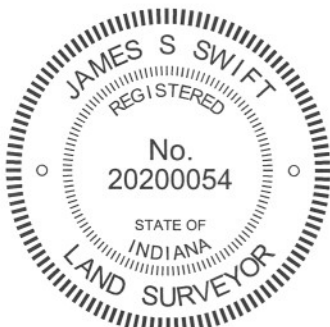
Boone County witness mark is a 3/8" diameter x 2' long rebar bearing a metal cap stamped "Boone County Witness Point."

The harrison monument was set in place of a railroad spike found.

This corner is not specifically described in the BCS Surveyor's Record beyond the original establishment of the corner as a wood post in 1829. However, the north line of section 26 is addressed in BCS records of May 1, 1841. That record demonstrates corners "a" and "b", being the corners 1/4 mile west and east, respectively, of the subject corner, as established along with other corners to the south. A subsequent record of February 25-26, 1873 shows corner "f" of section 23 (being the same as corner "a" of section 26) as being established with the statement "The corner "f" ("a" of Sec. 26, page 236) is 38 links too far west and 27 too far south."

The original notes from the federal survey in 1829 show the subject corner as being set on a "corrected" straight line between the section corners to the east and west, per standard procedures. However, the physical roadway of County Road 200 North deflects from the straight line and contains a significant bend in the vicinity of the subject corner. The generally accepted position of the corner, being in the center of the east-west roadway opposite an old wood end post on the south side of the road, is approximately 22 feet south of the straight line between the section corners to the east and west. The bend in the roadway is clearly visible on the 1939 aerial photos and is believed to be original to the construction of the road. The road is not shown as a wagon road on the 1876 map of the county. It is believed most likely that the 1841 survey created the bend, as the monumented corner 1/4 mile west was discovered to be too far south in 1873. It does not appear that the 1873 correction held, though, as the bend clearly still exists in the roadway. Surveys and deed descriptions to the east hold the corner in the roadway and do not attempt to straighten the line.

This corner was excavated on September 20, 2011. A mag nail was found slightly north of the center of C.R. 200 North opposite a wood end post on the south side of the road. Excavation revealed a railroad spike found at 3 inches deep, 0.1 foot north of the mag nail. A concrete culvert exists adjacent to the corner on the east side and excavation was limited to a 14x14 inch area. Fabric material associated with the construction of the bridge was found at 10 inches deep and hard material which appeared to be part of the footer of the bridge was found at the southeast corner of this area of excavation. Clearly, ground disturbance associated with the bridge construction extended beyond the probable corner. Hence, no evidence of the corner in the form of a stone or old stake was expected to be found. The railroad spike found at 3 inches deep was held as the accepted position of the corner. This position is most likely not the original position of the corner as established by the federal government in 1829, being 20 - 25 feet south of the most likely original corner. This position is likely to conform with the layout of the north line of section 26 as established in 1841. The railroad spike was replaced with a harrison monument and is considered to be marking the accepted, if not original, corner.

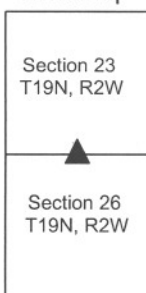


Kenneth E. Hedge
 Kenneth E. Hedge, County Surveyor

James S. Swift
 James S. Swift, IN LS 20200054

March 30, 2012

Jefferson Township



SECTION CORNER RECORD

BOONE COUNTY SURVEYOR'S OFFICE

NW 200-800

State Plane grid coordinates NAD83 (2011):

North: 1756152.88 East: 3082491.88 (U.S. survey feet)

Type of monument: Iron plug in concrete

Depth: Flush with adjacent road surface

Indiana tie card references:

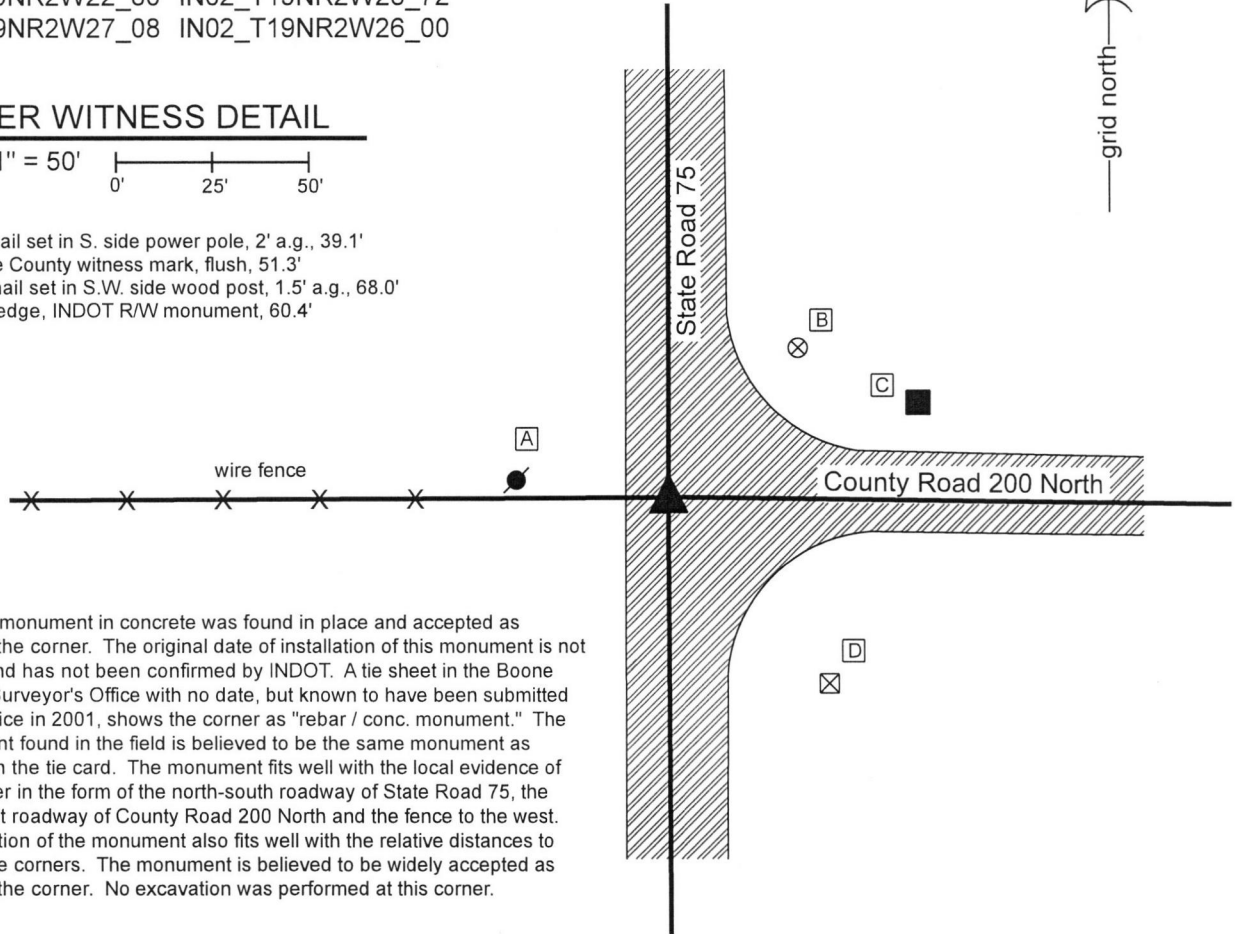
IN02_T19NR2W22_80 IN02_T19NR2W23_72

IN02_T19NR2W27_08 IN02_T19NR2W26_00

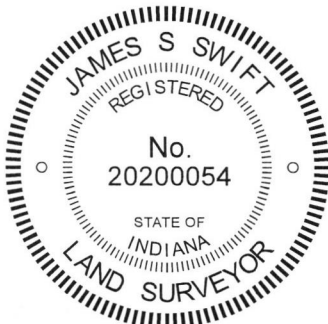
CORNER WITNESS DETAIL

SCALE 1" = 50'

- A - Mag nail set in S. side power pole, 2' a.g., 39.1'
- B - Boone County witness mark, flush, 51.3'
- C - Mag nail set in S.W. side wood post, 1.5' a.g., 68.0'
- D - N.W. edge, INDOT R/W monument, 60.4'



The iron monument in concrete was found in place and accepted as marking the corner. The original date of installation of this monument is not known and has not been confirmed by INDOT. A tie sheet in the Boone County Surveyor's Office with no date, but known to have been submitted to the office in 2001, shows the corner as "rebar / conc. monument." The monument found in the field is believed to be the same monument as shown on the tie card. The monument fits well with the local evidence of the corner in the form of the north-south roadway of State Road 75, the east-west roadway of County Road 200 North and the fence to the west. The position of the monument also fits well with the relative distances to proximate corners. The monument is believed to be widely accepted as marking the corner. No excavation was performed at this corner.



Kenneth E. Hedge
Kenneth E. Hedge, County Surveyor

James S. Swift
James S. Swift, IN LS 20200054
July 3, 2018

Jefferson Township

Section 22 T19N, R2W	Section 23 T19N, R2W
Section 27 T19N, R2W	Section 26 T19N, R2W

SECTION CORNER RECORD

NW 250-700

BOONE COUNTY SURVEYOR'S OFFICE

State Plane grid coordinates NAD83 (2011):

North: 1758789.74 East: 3087838.51 (U.S. survey feet)

Type of monument: Harrison, 4" disk 'Section Corner'

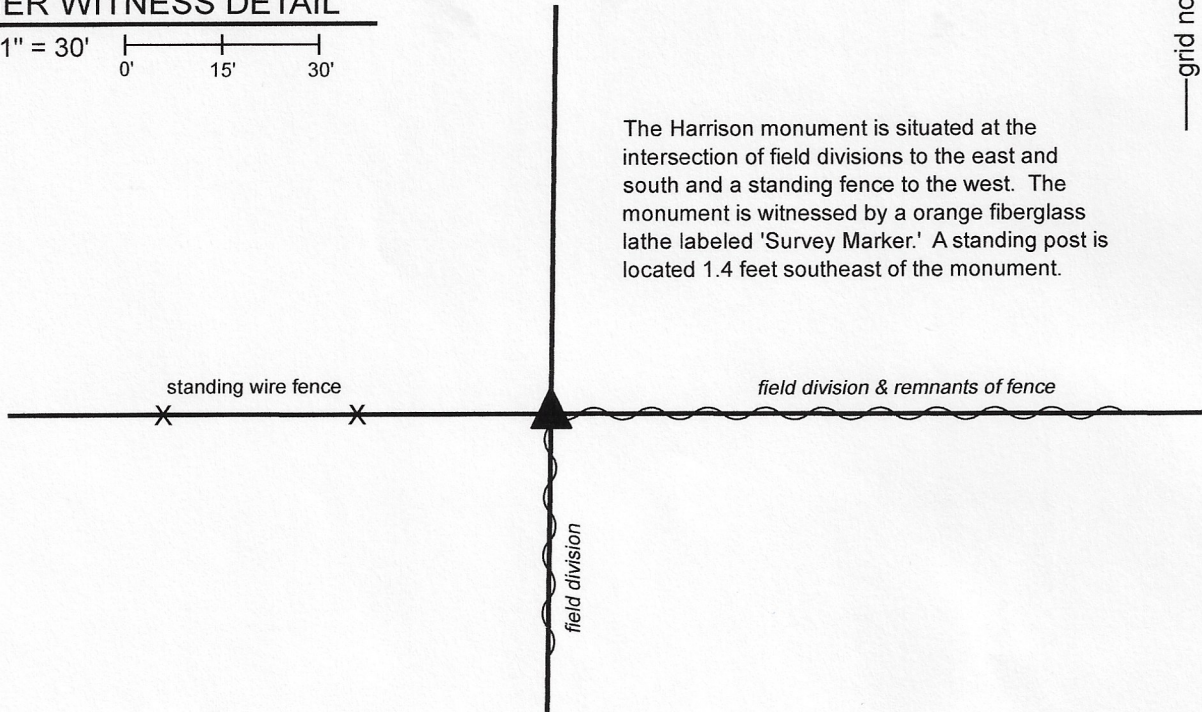
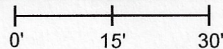
Depth: Three inches above surrounding ground

Indiana tie card references:

IN02_T19NR2W23_44 IN02_T19NR2W24_36

CORNER WITNESS DETAIL

SCALE 1" = 30'

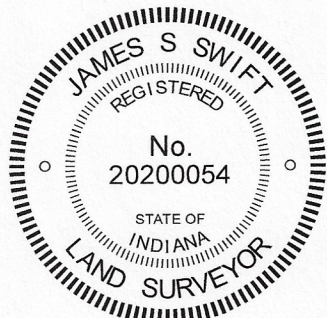


The Harrison monument is situated at the intersection of field divisions to the east and south and a standing fence to the west. The monument is witnessed by an orange fiberglass lathe labeled 'Survey Marker.' A standing post is located 1.4 feet southeast of the monument.

The Harrison monument was set in place of the base of a wood post found.

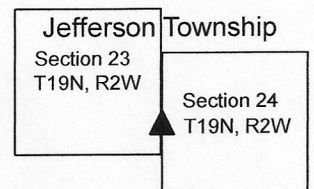
No specific descriptions of this corner were found in the BCS Surveyor's Record beyond the original establishment of the corner as a wood post in 1829. No recent BCS tie cards nor surveys recorded in the Boone County Recorder's Office were found referencing this corner.

Excavation was performed at this corner on April 6, 2020. Prior to excavation, two wood posts were found. One of the posts was found standing, the other lying on the ground. In April, 2015, the post on the ground had been found and located as standing with fencing to the east and west attached. The standing post had fencing cut-off toward the south. Excavation in the immediate vicinity of the two posts revealed numerous rocks and rubble of various sizes, none of which appeared to be have been purposely set to mark the corner. Remnants of the base of the fallen post were found at 8 inches deep. This post appeared to be of locust material. The positions of the two posts worked well with the relative positions of evidence of the corners 1/2 mile east (approximate intersection of fences immediately to the north and west) and 1/4 mile east (center of the north-south road, in line with fencing to the west). The fallen post appeared to be older and had been observed to be the primary post when both posts were standing in April 2015. The older post was accepted as the best available evidence of the corner and was held as marking the corner. The remnants of the base of the post were left in the ground, partially encased in concrete and Harrison monument was set directly over the base of post. The standing post was left in place, 1.4 feet southeast of the monument.



Kenneth E. Hedge, County Surveyor

James S. Swift, IN LS 20200054
April 29, 2020



SECTION CORNER RECORD

NW 250-800

BOONE COUNTY SURVEYOR'S OFFICE

State Plane grid coordinates NAD83 (2011):

North: 1758810.30 East: 3082493.85 (U.S. survey feet)

Type of monument: Iron plug in concrete

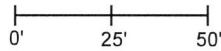
Depth: flush with adjacent road surface

Indiana tie card references:

IN02_T19NR2W22_44 IN02_T19NR2W23_36

CORNER WITNESS DETAIL

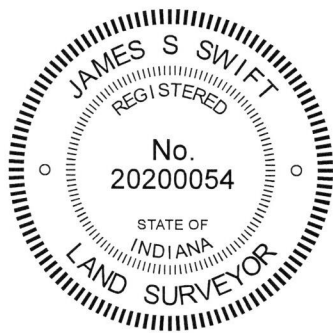
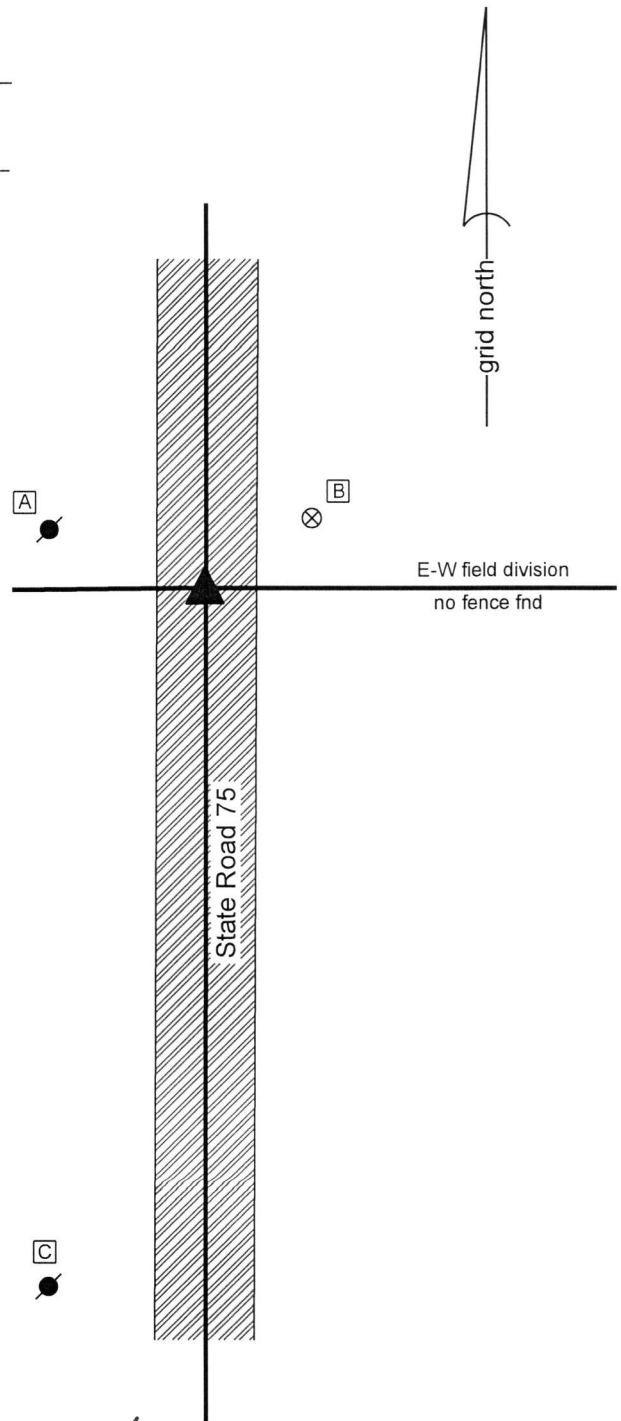
SCALE 1" = 50'



- A - Mag nail set in E. side power pole, 2' a.g., 41.5'
- B - Boone County witness mark, flush, 32.9'
- C - Mag nail set in E. side power pole, 2' a.g., 185.9'

Boone County witness mark is a 3/8" diameter x 2' long rebar bearing a metal cap stamped "Boone County Witness Point."

The iron monument in concrete was found in place and accepted as marking the corner. The original date of installation of this monument is not known and has not been confirmed by INDOT. A tie sheet in the Boone County Surveyor's Office with no date, but known to have been submitted to the office in 2001, shows the corner with no statement of the type of monument. The post and power poles which represent the reference objects for the distance ties on the undated tie card were removed in 2017 but the position of the monument was confirmed with respect to those distance ties prior to removal of the references. The monument found in the field is believed to be at the same position as the corner shown on the tie card. The monument fits well with the local evidence of the corner in the form of the north-south roadway of State Road 75 and a field division to the east (shown as an existing fence on the undated tie card). The position of the corner fits well with the relative distances to proximate corners. The monument is believed to be widely accepted as marking the corner. No excavation was performed at this corner.



Kenneth E. Hedge
Kenneth E. Hedge, County Surveyor

James S. Swift
James S. Swift, IN LS 20200054

July 3, 2018

Jefferson Township

Section 22 T19N, R2W	Section 23 T19N, R2W
-------------------------	-------------------------

SECTION CORNER RECORD

NW 300-700

BOONE COUNTY SURVEYOR'S OFFICE

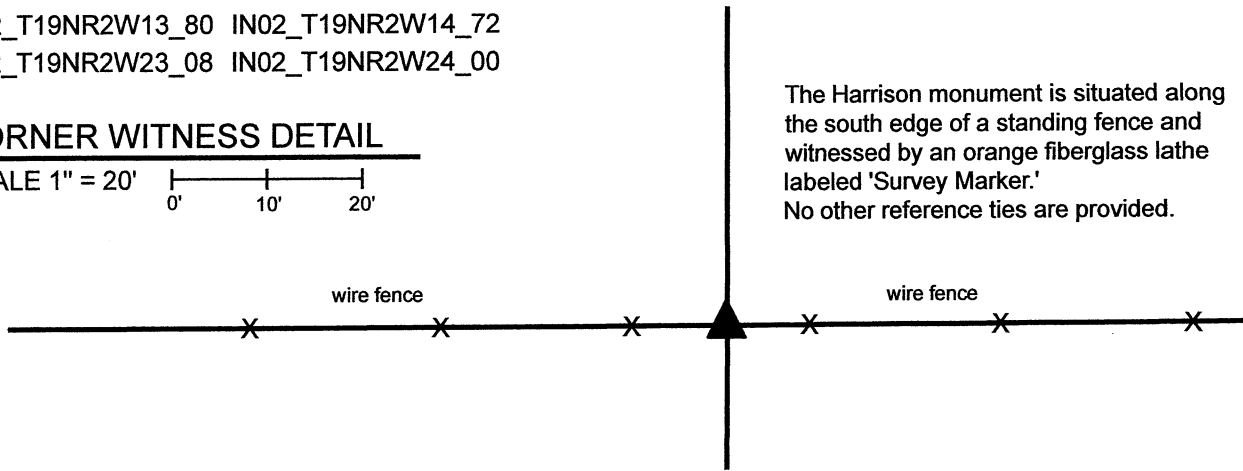
State Plane grid coordinates NAD83 (2011):
North: 1761442.59 East: 3087848.87 (U.S. survey feet)

Type of monument: Harrison, 4" disk 'Section Corner'
Depth: Three inches above surrounding ground

Indiana tie card references:
IN02_T19NR2W13_80 IN02_T19NR2W14_72
IN02_T19NR2W23_08 IN02_T19NR2W24_00

CORNER WITNESS DETAIL

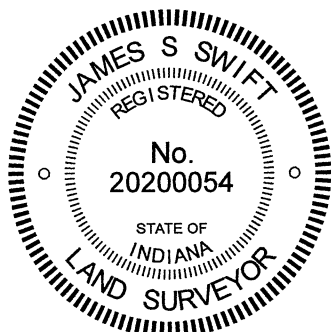
SCALE 1" = 20'
0' 10' 20'



The Harrison monument is situated along the south edge of a standing fence and witnessed by an orange fiberglass lathe labeled 'Survey Marker.'
No other reference ties are provided.

The Harrison monument was set in place of numerous small rocks found indicating the position of a previously occupied corner. No specific descriptions of this corner were found in the BCS Surveyor's Record beyond the original establishment of the corner as a wood post in 1829. Neither recent BCS tie cards nor surveys recorded in the Boone County Recorder's Office were found referencing the corner. The Harrison Minor Plat, defining land in the east half of the northwest quarter of Section 24, does not reference this corner.

As noted with the documentation for the north quarter corner of Section 23 (see BCS Corner NW 700-350), evidence of the section corners, quarter corners and quarter-quarter corners do not align well in this vicinity. Reconnaissance was first performed for this corner in 2015. No readily visible evidence of this corner was observed on first inspection other than the standing east-west fence. The corner was studied much more closely in 2020. Thorough analysis of the relative positions of the various available evidence indicates that an approach to discovering the position of this corner with respect to the quarter and quarter-quarter corners to the east west yields uncertain results. However, it was observed that substantial evidence of the occupied lines which represent the west line of the east half of the northeast quarter of Section 23 (standing fence between ancient corner posts) and the east line of the west half of the northwest quarter of Section 24 (existing roadway of County Road 675 West) is present. It was further observed that this evidence defines lines which are nearly parallel with each other. For purposes of searching for evidence of the subject corner, an approximate position for the corner was established with respect to these parallel lines, as anchored on the west quarter corner of Section 24 (see BCS Corner NW 250-700). Careful probing and digging in the vicinity of this approximate position revealed that generally, very few rocks are located in the ground along the east-west fence, but that in one specific position, numerous small rocks were clustered together at depths between flush with the surface and up to 18 inches deep. This cluster of small rocks was centered on a position 2 feet west of the approximate position for the corner computed with respect to the evidence of the aforementioned parallel lines and west quarter corner of Section 24. This locus of rocks did not appear to be natural and did appear to represent evidence of a previously occupied corner, as it has been observed at numerous other corners throughout the county that rocks, large and small, are often clustered about a corner post. None of the found rocks appeared to represent a stone purposely set to mark the corner. Rather, the congregation of rocks appeared to represent evidence of a previously occupied corner. Given the lack of reference to this corner in deeds or surveys and given the harmony of this position with the best available evidence of older lines in the area as discussed above, the grouping of small rocks was accepted as the best available evidence of the original position of the corner. A Harrison monument was set at the center of the area defined by the found rocks on April 26, 2021. Similar to what is stated with the documentation for the north quarter corner of Section 23 (see BCS Corner NW 300-750), it is recommended that future surveyors be aware that the evidence of the section, quarter and quarter-quarter corners does not align well in this area, the east-west lines zig-zag substantially, and that holding computed midpoints for quarter-quarter corners will not result in positions which work with otherwise reliable evidence of the quarter-quarter corners to the east and west of this corner. Sensible, professional judgement should be applied to establishing the position of quarter-quarter corners in this area.



Kenneth E. Hedge
Kenneth E. Hedge, County Surveyor

James S. Swift
James S. Swift, IN LS 20200054
May 11, 2021

Jefferson Township

Section 14 T19N, R2W	Section 13 T19N, R2W
Section 23 T19N, R2W	Section 24 T19N, R2W

SECTION CORNER RECORD

NW 300-750

BOONE COUNTY SURVEYOR'S OFFICE

State Plane grid coordinates NAD83 (2011):

North: 1761439.47 East: 3085130.04 (U.S. survey feet)

Type of monument: Harrison, 4" disk 'Section Corner'

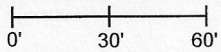
Depth: Three inches above surrounding ground

Indiana tie card references:

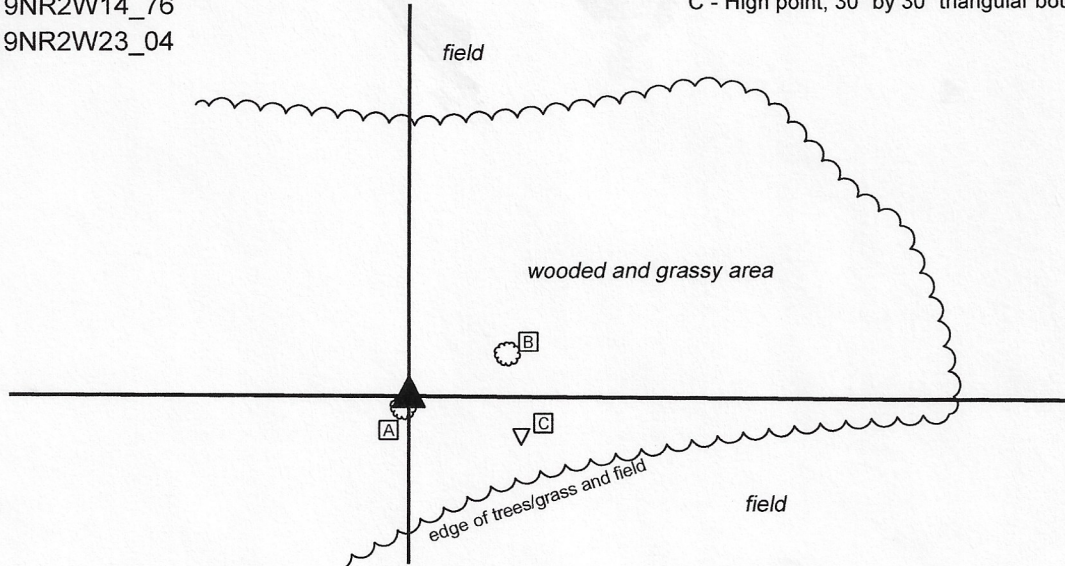
IN02_T19NR2W14_76

IN02_T19NR2W23_04

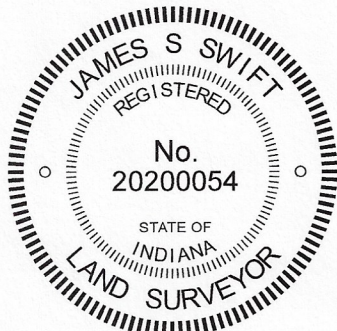
CORNER WITNESS DETAIL

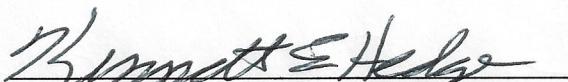
SCALE 1" = 60' 

- A - N. edge 9" diameter locust tree, 4.0'
- B - W. edge 30" diameter cottonwood tree, 33.0'
- C - High point, 30" by 30" triangular boulder, 36.8'



The Harrison monument was set at the north edge of a metal brace post and in place of fragments of wood found representing the apparent remnants of a wood post. No specific description of this corner was found in the BCS Surveyor's Record beyond the original establishment of the corner as a wood post in 1819. However, the corner is mentioned in a sidebar entry associated with a record of December 3, 1844 which states "F is 3 poles too far west." The reference to corner F represents a reference to the subject corner, being the south quarter corner of section 14. Analysis of evidence of the proximate corners and adjoining deeds indicates that substantial irregularities are associated with the east-west lines with respect fences and corner posts from this corner 1/2 mile to the west and 1 mile to the east. The evidence of the 1/4 mile corners (quarter-quarter corners), or other intermediate corners does not line up well with the evidence of the 1/2 mile corners (section and quarter section corners.) It is clear that the description for the adjoining property to the north of this corner (I 2019002927) was written with respect to an apparent establishment of the position of this corner at the westerly prolongation of a fence found from approximately 1/4 mile east to 1/2 mile to the east. Though the corner is not called out in the description, its position is implied and the position computed with respect to deed calls fall substantially south of any available evidence in the vicinity of the corner. No survey was found associated with the creation of this description. A reliable piece of evidence of the south line of the southwest quarter of section 14, being an old corner post with fence to the north and fence cut-off toward the east, was found approximately 353 feet west of the subject corner. An approximate position for the corner was established at the prolongation of the line from the section corner to the west (BCS corner NW 300-800) through this post to an east-west position computed with respect to the corner to the west and reliable evidence of the section corner to the east (BCS corner NW 300-700, not yet fully established, but reliable evidence found), taking into account the reference in the 1844 record that the corner is 3 poles (49.5 feet) too far west. Reconnaissance and excavation in the vicinity of this computed position revealed a metal pole which bore the distinct characteristics of a metal brace for a wood corner post found with the southern end buried in the ground and the northern end generally flush with ground at a point approximately 4 feet south of the computed position. Excavation at the northern end of the brace revealed several small rocks and small fragments of wood which appeared to represent the remnants of a wood post. Given the general uncertainties of the evidence in this area, and accounting for the fact that the corner was evidently already well west of the expected position in 1844, the evidence of the brace and post remnants fit remarkably well with the other found evidence. The remnants of the post were accepted as the best available evidence of the corner. A Harrison monument was set at this position at the north end of the metal brace pole on April 24, 2020. It is noted that the computed position for the corner as implied in the deed for the adjoining property to the north is approximately 30 feet south and 5 feet east of this position. It is strongly recommended that surveyors who hold this corner take into consideration the local evidence of the quarter-quarter corners, particularly with respect to the corner 1/4 mile east of the subject corner and do not attempt to established straight half-mile lines with quarter-quarter corners established at computed midpoints. As noted above, the evidence of the east-west section lines in this area zig-zags, diverging from straight lines. Sensible judgement should be applied to the interpretation of that evidence.




 Kenneth E. Hedge, County Surveyor


 James S. Swift, IN LS 20200054

June 3, 2020

Jefferson Township

Section 14
T19N, R2W

Section 23
T19N, R2W

SECTION CORNER RECORD

BOONE COUNTY SURVEYOR'S OFFICE

NW 300-800

State Plane grid coordinates NAD83 (2011):

North: 1761457.81 East: 3082495.68 (U.S. survey feet)

Type of monument: Iron plug in concrete

Depth: Flush with adjacent road surface

Indiana tie card references:

IN02_T19NR2W15_80 IN02_T19NR2W14_72

IN02_T19NR2W22_08 IN02_T19NR2W23_00

CORNER WITNESS DETAIL

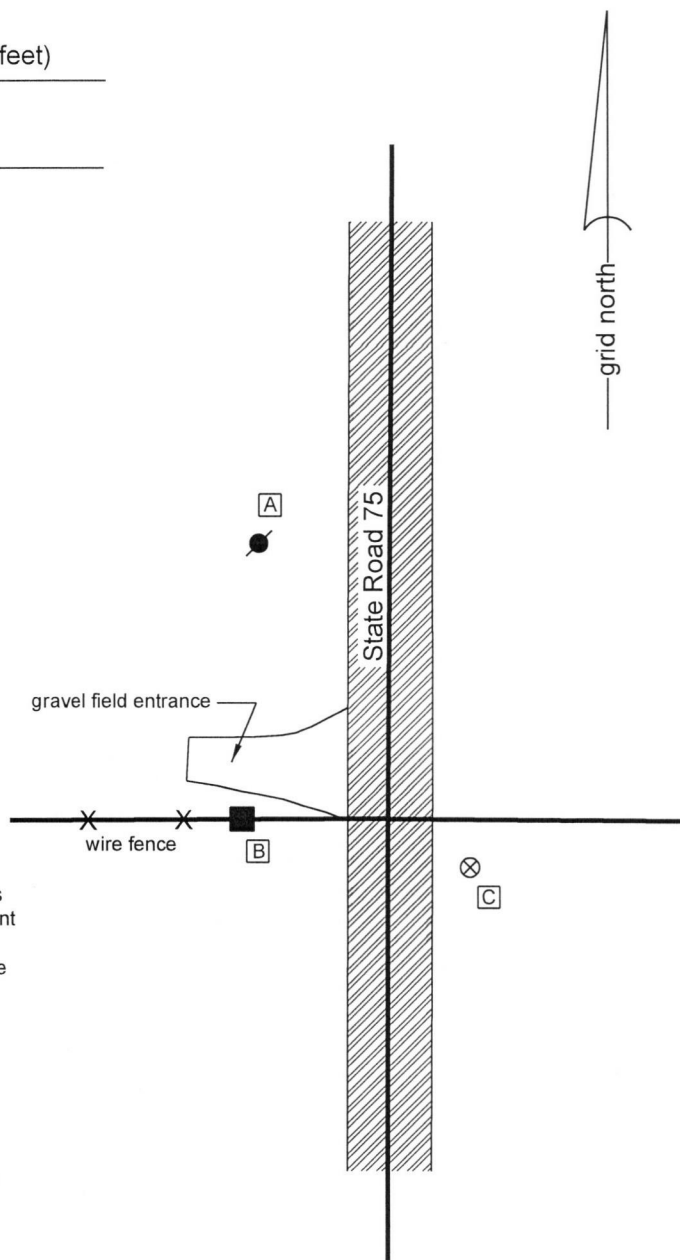
SCALE 1" = 60'

A - Mag nail set in S.E. side power pole, 2' a.g., 92.7'

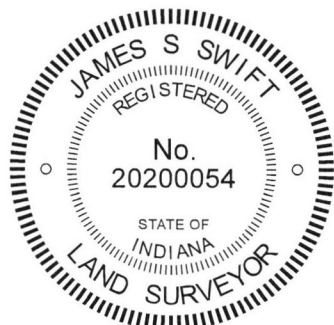
B - Mag nail set in E. side wood post, 1.5' a.g., 41.9'

C - Boone County witness mark, flush, 30.0'

Boone County witness mark is a 3/8" diameter x 2' long rebar bearing a metal cap stamped "Boone County Witness Point."



The iron monument in concrete was found in place and accepted as marking the corner. The original date of installation of this monument is not known and has not been confirmed by INDOT. A tie sheet in the Boone County Surveyor's Office with no date, but known to have been submitted to the office in 2001, shows the corner with no statement of the type of monument. The power poles which represent two of the reference objects for the distance ties on the undated tie card were removed in 2017 but the position of the monumented corner was confirmed with respect to those distance ties prior to removal of the references. The monument found in the field is believed to be at the same position as the corner shown on the tie card. The monument fits well with the local evidence of the corner in the form of the north-south roadway of State Road 75 and the fence to the west. The position of the corner fits well with the relative distances to proximate corners. The monument is believed to be widely accepted as marking the corner. No excavation was performed at this corner.



Kenneth E. Hedge
 Kenneth E. Hedge, County Surveyor

James S. Swift
 James S. Swift, IN LS 20200054
 July 3, 2018

Jefferson Township

Section 15 T19N, R2W	Section 14 T19N, R2W
Section 22 T19N, R2W	Section 23 T19N, R2W