

SECTION CORNER RECORD

SE 300-1050

BOONE COUNTY SURVEYOR'S OFFICE

State Plane grid coordinates NAD83 (NSRS 2007):

North: 1731135.29 East: 3180725.98 (U.S. survey feet)

Type of monument: Harrison, 4" disk 'Section Corner'

Depth: One inch below adjacent road surface

Indiana tie card references:

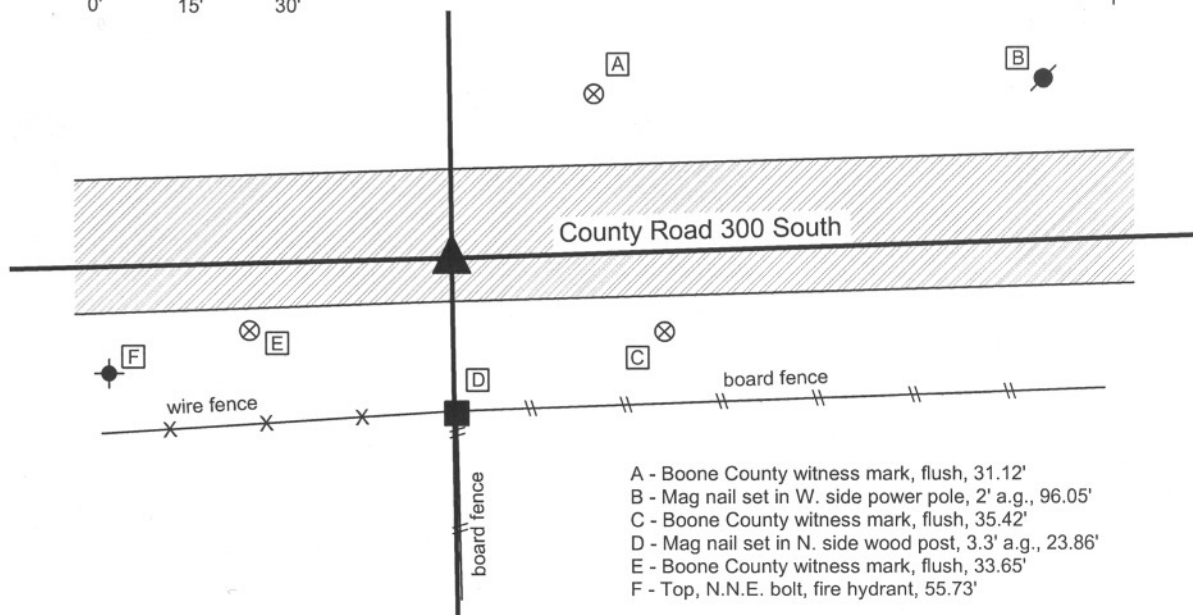
IN02_T18NR2E14_76

IN02_T18NR2E23_04



CORNER WITNESS DETAIL

SCALE 1" = 30'

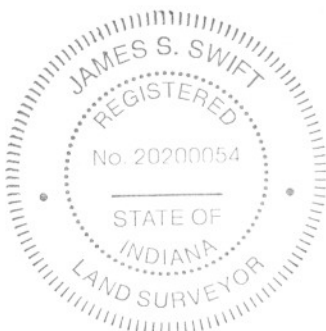


Boone County witness mark is a 3/8" diameter x 2' long rebar bearing a metal cap stamped "Boone County Witness Point."

The harrison monument was set over the etched "+" on a stone found.

A BCS tie card of April 12, 1889 states "Re-established from stump of beech; mark yet plain but rotten. Set two rocks, one 5x4x2 1/2 + Top one 20x10x10 +." A tie card of unknown source dated May 12, 1967 states "found stone with cross down 8 inches. Set iron pipe over." A note added to that tie card by a field crew from this office, dated July, 1967 states "Set R.R. rail on W. side of stone." A BCS tie card dated June 5, 1991 calls for a railroad rail at the corner. This corner was excavated on August 6, 2008. Prior to excvation, the railroad rail was visible several inches deep in a hole in the asphalt. Excavation revealed the record stone at 14 inches deep on the east side of the rail. With the top 10 inches of the stone exposed, the stone measures 10 inches NW-SE by 9 inches NE-SW and increasing in size iin the NE-SW dimension as the stone goes deeper into the ground. The harrison monument was set over the top of the etched "+" on the stone.

This corner was originally established as a wood post in July, 1821.



Kenneth E. Hedge
Kenneth E. Hedge, County Surveyor

James S. Swift
James S. Swift, IN LS 20200054

March 11, 2009

Union Township

Section 14
T18N, R2E

Eagle Township

Section 23
T18N, R2E

PHOTOGRAPHIC DOCUMENTATION

Date of photography: August 6, 2008

View from north, looking across stone and along the fence line to the south. The railroad rail which had been against the west side of the stone was removed and is lying at the south edge of the road.



Corner stone - overhead view from south.



Corner stone - overhead view from west.



Same picture as to the left with etched "+" enhance for ease of visual detection.



For details and documentation, refer to related sheet "Section Corner Record."

SECTION CORNER RECORD

BOONE COUNTY SURVEYOR'S OFFICE

SE 300-1100

State Plane grid coordinates NAD83 (NSRS 2007):

North: 1731212.63 East: 3183418.78 (U.S. survey feet)

Type of monument: Harrison, 4" disk 'Section Corner'

Depth: flush with adjacent ground in median

Indiana tie card references:

IN02_T18NR2E13_72 IN02_T18NR2E14_80

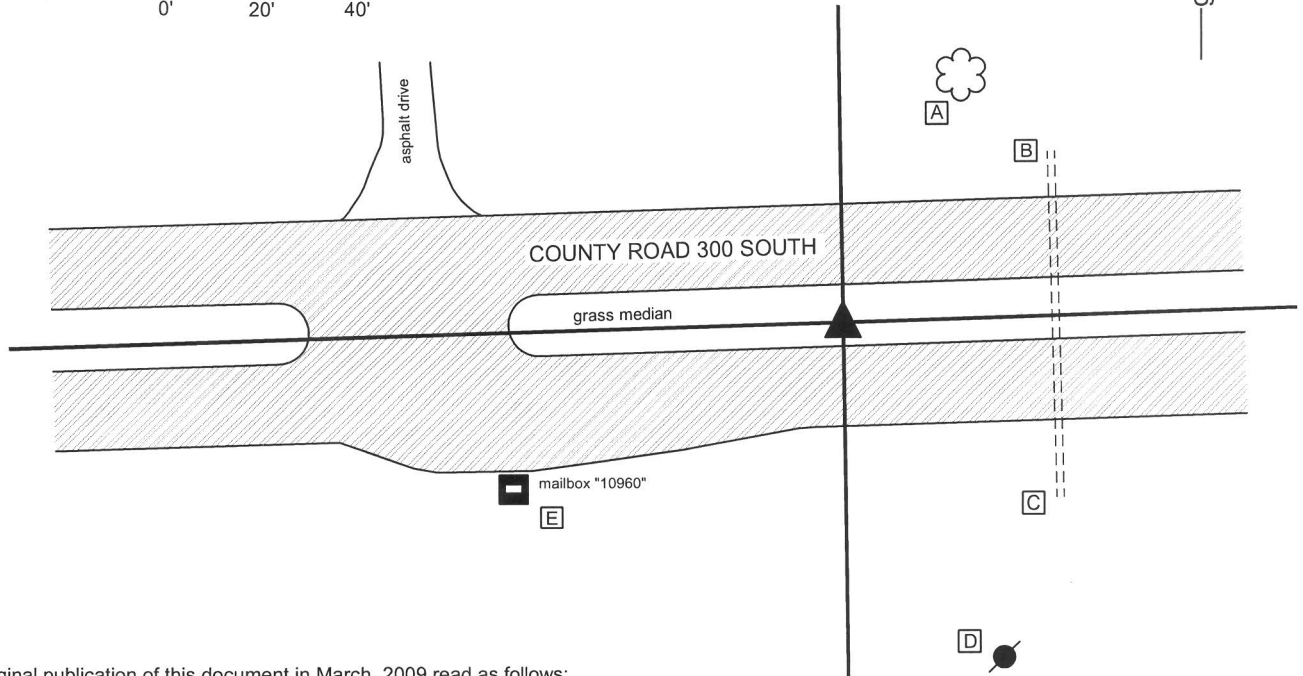
IN02_T18NR2E23_08 IN02_T18NR2E24_00

CORNER WITNESS DETAIL

SCALE 1" = 40'



- A - 16 inch diameter Oak tree, south edge at 2' a.g., 52.0'
- B - Top, North end, 20"x30" squashed concrete storm pipe, 56.0'
- C - Top, south end, 20"x30" squashed concrete storm pipe, 58.0'
- D - Mag nail set in N. side power pole, 2' a.g., 74.6'
- E - N.E. corner, steel mailbox post, # 10960, 76.5'



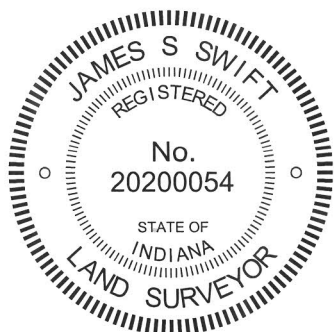
The original publication of this document in March, 2009 read as follows:

"The harrison monument was set in place of a mag nail and stone.

A BCS record of January 20, 1874 states "Reestablished after running all four lines terminating here. Set a rock 21.18.12 +". A tie card of unknown source dated May 12, 1967 states "found stone with cross. Set iron pipe over." A note added to that tie card by a field crew from this office, dated July, 1967 states "Set R.R. rail on N. side of stone." A BCS tie card dated July 5, 2006 shows the corner as a mag nail with no documentation about source. This corner was excavated on August 6, 2008. Prior to excavation a mag nail was visible, approximately one inch below the surface of the road in a hole in the asphalt. Excavation revealed the railroad rail at 20 inches deep and the stone at 23 inches deep. The etched "+" on the stone was on the north downslope of the top of the stone. The rail was leaning against the north side of the stone, extending to approximately over the "+." Please refer to the attached sheet for photographic documentation. The mag nail had been over the top, center of the stone while the top of the rail had been slightly north. All three monuments were removed. The stone was removed due to the proposed reconstruction of this section of road. The harrison monument was set in the position of the mag nail, which is also the position of the top, center of the stone.

This corner was originally established as a wood post in July, 1821."

Major reconstruction of the road since the corner was confirmed in 2009 disturbed but did not destroy the harrison monument. The monument was found at 1.2 feet deep in the grass median of the newly constructed road. The monument appeared to have been sheered off but the position of the monument had not been changed. The monument did not appear to have been tilted or displaced in any way. The damaged harrison was left in place and on May 16, 2013 a new harrison monument was set directly over the old one in the same horizontal position.



Kenneth E. Hedge

 Kenneth E. Hedge, County Surveyor

Union Twp

James S. Swift

 James S. Swift, IN LS 20200054

Eagle Twp

March 11, 2009, Revised February 5, 2015

Section 14 T18N, R2E	Section 13 T18N, R2E
Section 23 T18N, R2E	Section 24 T18N, R2E

PHOTOGRAPHIC DOCUMENTATION

Date of photography: August 6, 2008

Corner stone and railroad rail. The rail was situated against the north side of the stone, which is in agreement with the 1967 tie card.



Corner stone after rail was removed. The rail was leaning along the side of the stone with the top of the rail over the etched "+" on the stone.



Corner stone and railroad rail - both removed from ground. The stone was removed due to proposed reconstruction of County Road 300 South. The rail is 30 inches long. The stone matches the 1874 record description of "set rock 21.18.12 +"



Same picture as above with etched "+" enhanced for ease of visual detection.



For details and documentation, refer to related sheet "Section Corner Record."

SECTION CORNER RECORD

BOONE COUNTY SURVEYOR'S OFFICE

SE 350-1100

State Plane grid coordinates NAD83 (NSRS 2007):

North: 1728571.61 East: 3183451.52 (U.S. survey feet)

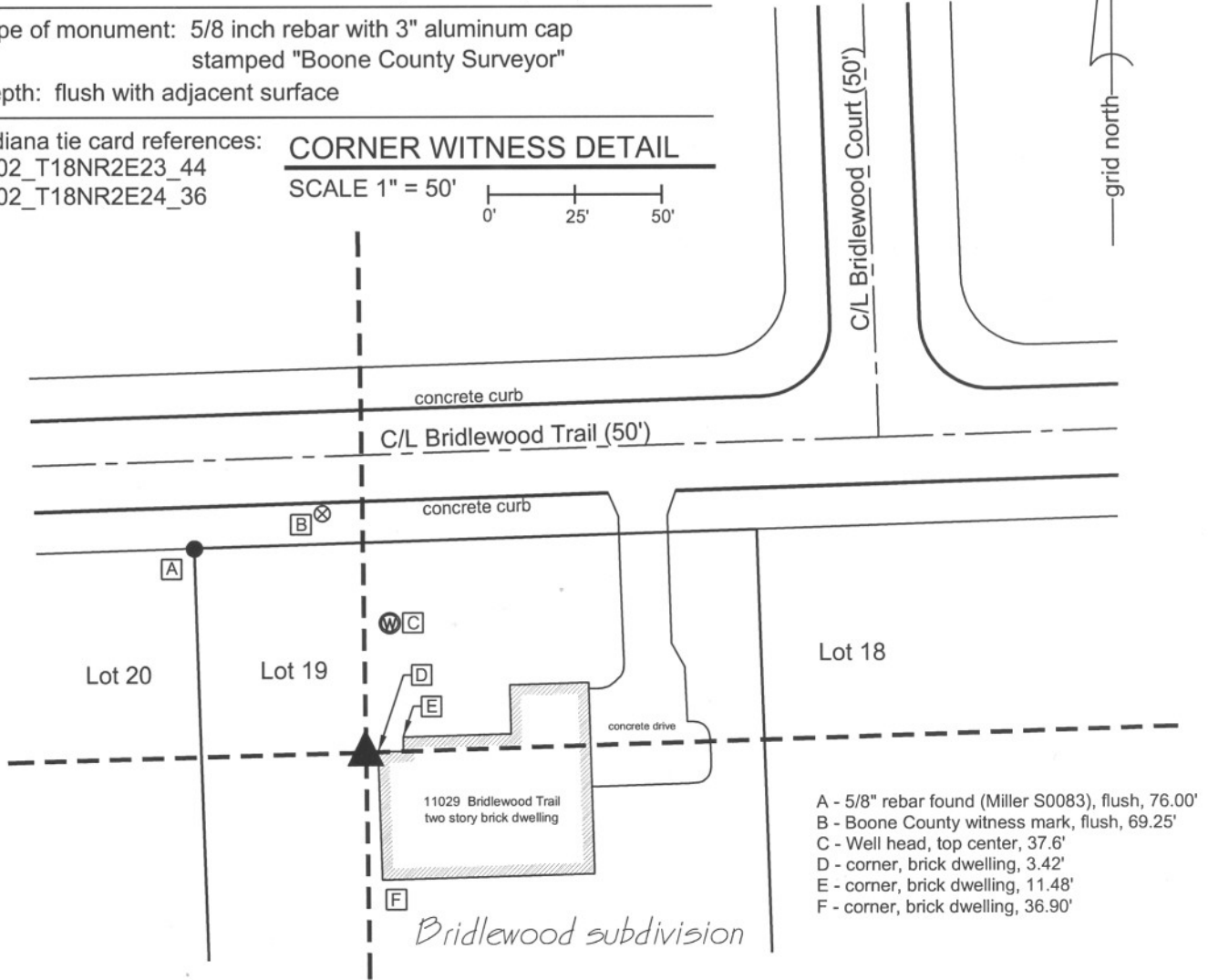
Type of monument: 5/8 inch rebar with 3" aluminum cap stamped "Boone County Surveyor"

Depth: flush with adjacent surface

Indiana tie card references:
IN02_T18NR2E23_44
IN02_T18NR2E24_36

CORNER WITNESS DETAIL

SCALE 1" = 50'



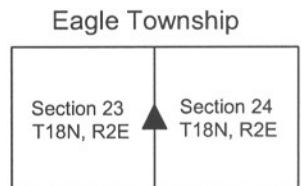
- A - 5/8" rebar found (Miller S0083), flush, 76.00'
- B - Boone County witness mark, flush, 69.25'
- C - Well head, top center, 37.6'
- D - corner, brick dwelling, 3.42'
- E - corner, brick dwelling, 11.48'
- F - corner, brick dwelling, 36.90'

The harrison monument was set at the calculated midpoint of the line connecting the section corners to the north and south. This corner falls within Lot 19, Bridlewood Subdivision. The plat of Bridlewood, Plat Book 6, page 105, Office of the Boone County Recorder, shows the corner as being established "by split no monument found." All subsequent refernces to this corner hold a calculated mid-point position. This position for the corner falls 3.4 feet west of the corner of an existing dwelling. Any evidence of the corner which may have existing prior to construction of the house would hav been destroyed during construction of the foundation for this house. Hence, with no evidence remaining and all recent refernces in agreement, the corner was established at the midpoint of the line connecting the section corners to the north and south, in accordance with the record plat for Bridlewood Subdivision. The plat demonstrates the corners to the north and south as being stones, both of which were found. The positions of these stones were used to compute the midpoint. A 36 inch long 5/8 inch diameter rebar was set with a metal cap stamped "Boone County Surveyor" at the computed midpoint. This corner was originally established as a wood post in July, 1821.



Kenneth E. Hedge
Kenneth E. Hedge, County Surveyor

James S. Swift
James S. Swift, IN LS 20200054
July 14, 2010



SECTION CORNER RECORD

BOONE COUNTY SURVEYOR'S OFFICE

SE 400-1000

State Plane grid coordinates NAD83 (NSRS 2007):

North: 1725778.50 East: 3178101.90 (U.S. survey feet)

Type of monument: Stone (blue granite)

Depth: top at 2 inches above grade

Indiana tie card references:

IN02_T18NR2E22_80

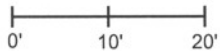
IN02_T18NR2E23_72

IN02_T18NR2E27_00

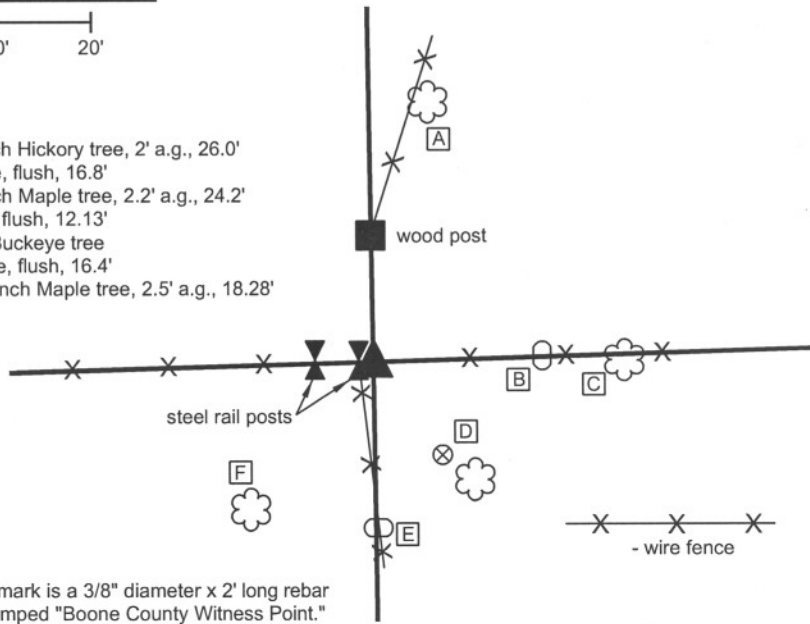
IN02_T18NR2E26_08

CORNER WITNESS DETAIL

SCALE 1" = 20'



- A - Mag nail set in S. side, 13 inch Hickory tree, 2' a.g., 26.0'
- B - Top, west side, witness stone, flush, 16.8'
- C - Mag nail set in W. side, 24inch Maple tree, 2.2' a.g., 24.2'
- D - Boone County witness mark, flush, 12.13'
point is 1.9' N.W. of 16 inch Buckeye tree
- E - Top, north side, witness stone, flush, 16.4'
- F - Mag nail set in N.E. side, 16 inch Maple tree, 2.5' a.g., 18.28'



Boone County witness mark is a 3/8" diameter x 2' long rebar bearing a metal cap stamped "Boone County Witness Point."

A BCS record of March 14-15, 1894 states "Re-established by intersection of lines. Set Blue rock + 20.9.8 at corner. White flint rock 16.10.6 East 25 links. Blue rock W 18.14.11 South 25 links."

All three rocks were found and the corner stone was found to be situated at approximately the 25 link (16.5 feet) distance from the witness stones (see measured tie distances above.) The + is not visible on the corner stone, though it is clearly a blue granite stone. The stone was left in place and witnessed with a orange fiberglass witness post. This stone is noted as being found on numerous recorded surveys.

This corner was originally established as a wood post in July 1821.



Kenneth E. Hedge
Kenneth E. Hedge, County Surveyor

James S. Swift
James S. Swift, IN LS 20200054

March 11, 2009

Eagle Township

Section 22 T18N, R2E	Section 23 T18N, R2E
Section 27 T18N, R2E	Section 26 T18N, R2E

PHOTOGRAPHIC DOCUMENTATION

Date of photography: April 9, 2008

Corner stone as visible prior to excavation - view from southeast.



Corner stone with some of the stone exposed - overhead view from southeast.



Corner stone - view from above.



Corner stone - side view from north.



Record witness stone to the south.



Record witness stone to the east.



For details and documentation, refer to related sheet "Section Corner Record."

SECTION CORNER RECORD

SE 400-1050

BOONE COUNTY SURVEYOR'S OFFICE

State Plane grid coordinates NAD83 (2011):

North: 1725857.36 East: 3180797.00 (U.S. survey feet)

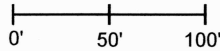
Type of monument: No monument set,
corner falls in window well

Indiana tie card references:

IN02_T18NR2E23_76 IN02_T18NR2E26_04

CORNER WITNESS DETAIL

SCALE 1" = 100'



- A - Survey control point, flush, 113.1'
- B - Mag Nail found in C/L Club Ridge Estates Rd., flush, 123.2'
- C - Boone County witness mark, flush, 6.8'
- D - Boone County witness mark, flush, 8.8'
- E - S.W. corner, brick house, '3953 Club Ridge Estates Rd., 3' a.g., 28.2'
- F - N.E. corner of window well bump-out, 4' a.g., 5.1'

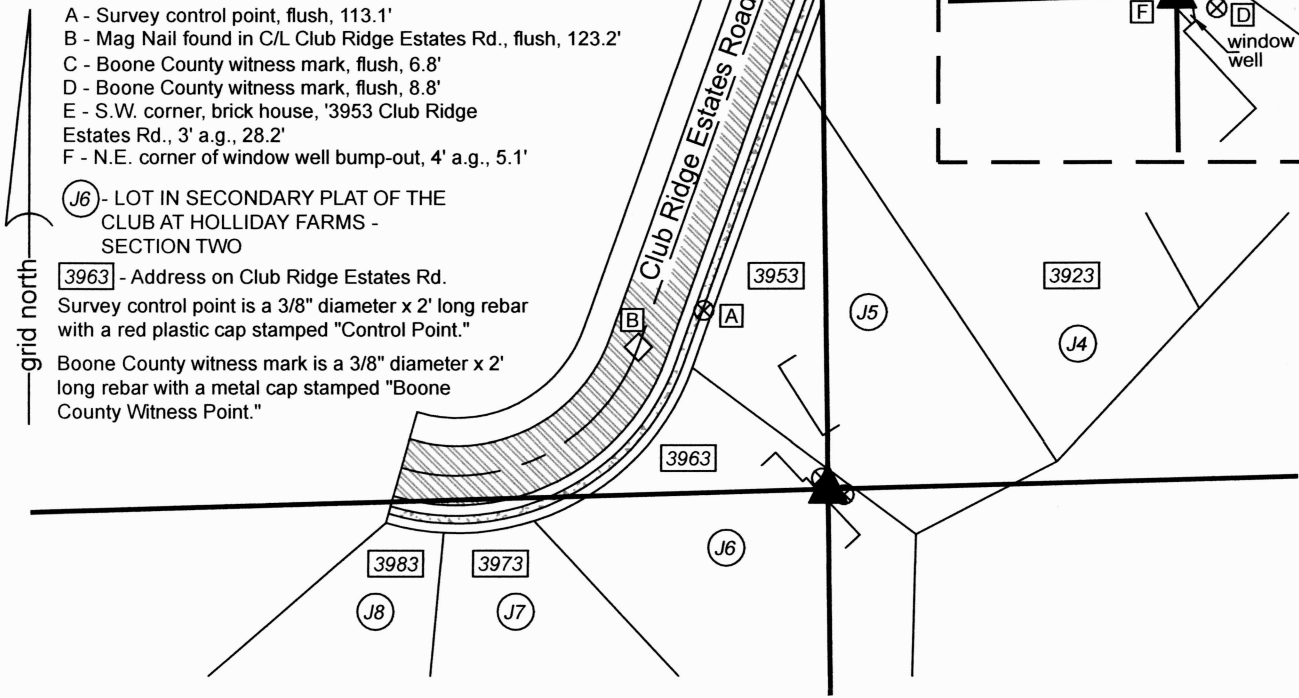
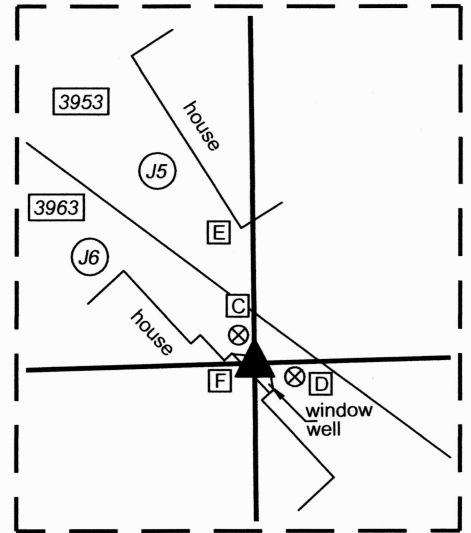
(J6) - LOT IN SECONDARY PLAT OF THE CLUB AT HOLLIDAY FARMS - SECTION TWO

3963 - Address on Club Ridge Estates Rd.

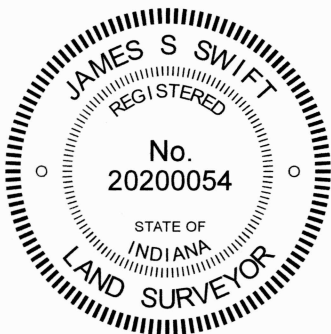
Survey control point is a 3/8" diameter x 2' long rebar with a red plastic cap stamped "Control Point."

Boone County witness mark is a 3/8" diameter x 2' long rebar with a metal cap stamped "Boone County Witness Point."

CORNER DETAIL
SCALE 1" = 40'

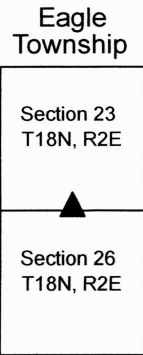


A stone was previously found and held as marking this corner, as documented on a BCS Section Corner Record sheet dated March 11, 2009 and revised July 14, 2010. Subsequently, the stone has been removed as part of construction of a house adjacent to the corner. The position of the corner falls within a window well associated with the adjacent house. No monument was set in the window well. Two 3/8-inch diameter by 24-inch long rebars with metal cap stamped 'Boone County Witness Point' were set nearby as witnesses to the actual corner. The previous record for this corner stated the following: 'The stone was found in place. A BCS record of September 27, 1866 states "Reestablished. Set rock 18.12 by 10 in. Marked +. One under it 6.4 1/2 by 3 + on top." A BCS tie card dated June 4, 1991 states "rock fd. (0.7' x 0.4') 0.5' E of leaning fence post (question whether this is corner of record.)" The record stone was found flush with the top exposed, approximately 1.5 feet north of the leaning fence post. It is not clear which rock the 1991 tie card was describing. The record stone was exposed sufficiently to determine that it fits the dimensions and markings of the record stone. The etched "+" is visible on the sloping side of the stone, slightly south of the high point. The specific point on the stone held as the corner is the clearly identifiable high point. This corner was originally established as a wood post in July, 1821.'



Carol Cunningham
Carol Cunningham, County Surveyor

James S. Swift
James S. Swift, IN LS 20200054
April 10, 2024



SECTION CORNER RECORD

SE 400-1100

BOONE COUNTY SURVEYOR'S OFFICE

State Plane grid coordinates NAD83 (2011):

North: 1725930.58 East: 3183484.34 (U.S. survey feet)

Type of monument: Chiseled 'X' on stone

Depth: Two inches above surrounding ground

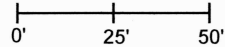
Indiana tie card references:

IN02_T18NR2E23_80 IN02_T18NR2E24_72

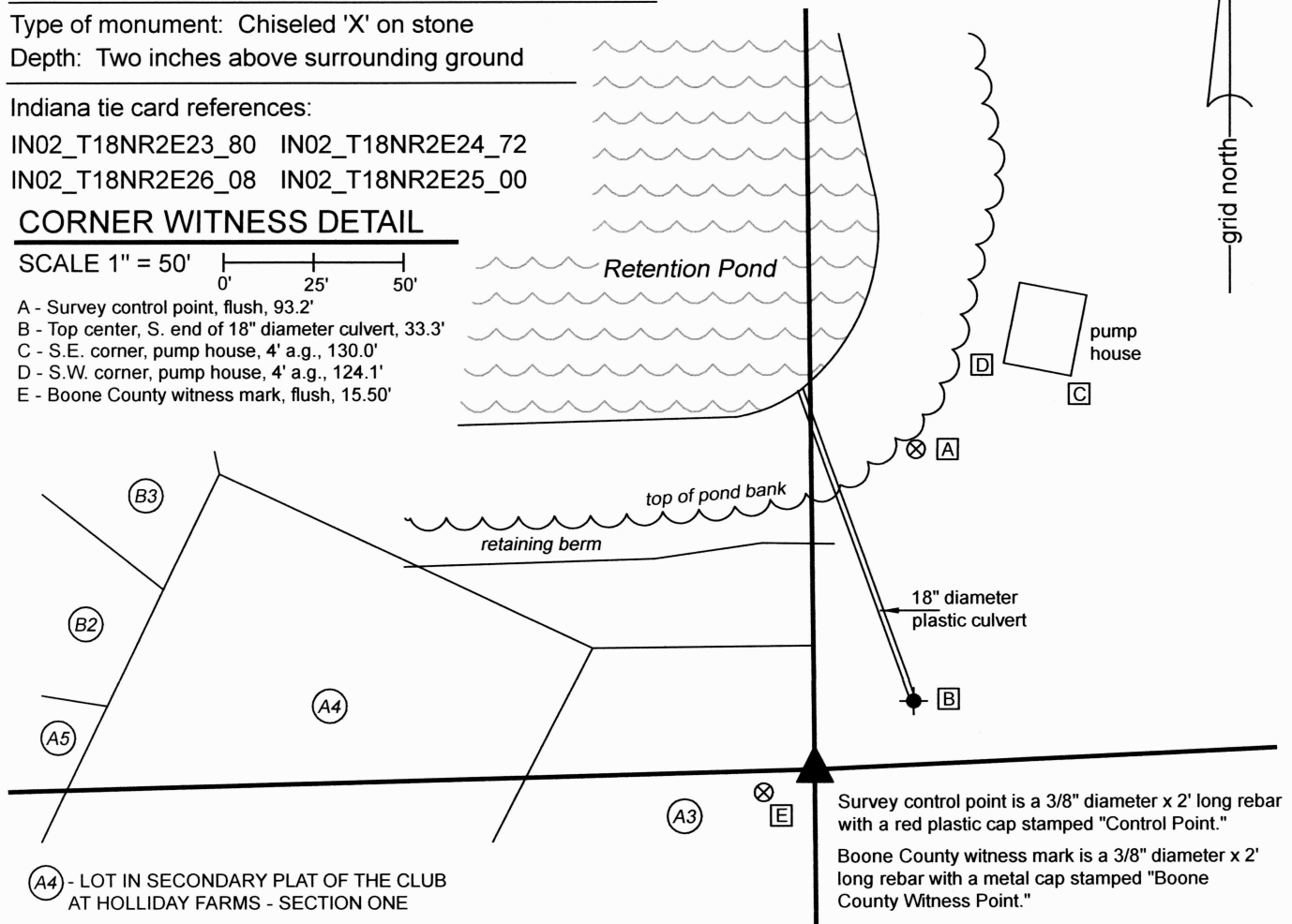
IN02_T18NR2E26_08 IN02_T18NR2E25_00

CORNER WITNESS DETAIL

SCALE 1" = 50'



- A - Survey control point, flush, 93.2'
- B - Top center, S. end of 18" diameter culvert, 33.3'
- C - S.E. corner, pump house, 4' a.g., 130.0'
- D - S.W. corner, pump house, 4' a.g., 124.1'
- E - Boone County witness mark, flush, 15.50'

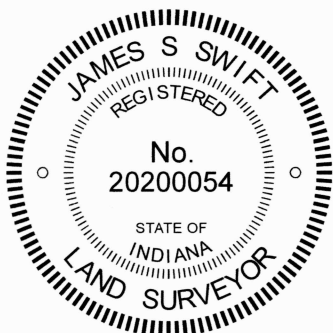


(A4) - LOT IN SECONDARY PLAT OF THE CLUB AT HOLLIDAY FARMS - SECTION ONE

Survey control point is a 3/8" diameter x 2' long rebar with a red plastic cap stamped "Control Point."

Boone County witness mark is a 3/8" diameter x 2' long rebar with a metal cap stamped "Boone County Witness Point."

The stone was found in place and held as marking the corner. This corner is the subject of a previous Section Corner Record dated March 11, 2009 and revised July 14, 2010. The stone remains in place, undisturbed. Since 2010, a subdivision has been constructed in the vicinity of this corner. The current record is intended to provide new ties, updated geodetic coordinates, and demonstrate the current context of the corner. The 2009/2010 record states the following: 'A BCS record of April 14, 1880 states "Reestablished from Beech bearing tree. Set Rock 18.9 by 11 in. + on top." No BCS tie cards were found for this corner. Numerous private surveys call for a stone found. The stone is visible in the ground, protruding approximately 2 inches out of the ground at the northeast corner of the base of an old wood corner post. The "+" is clearly visible on top, which represents the precise location held as the corner for this tie card. This corner was originally established as a wood post in July, 1821.'



Carol Cunningham
Carol Cunningham, County Surveyor

James S. Swift
James S. Swift, IN LS 20200054
April 10, 2024

Eagle Township

Section 23 T18N, R2E	Section 24 T18N, R2E
Section 26 T18N, R2E	Section 25 T18N, R2E