

# SECTION CORNER RECORD

SE 300-900

## BOONE COUNTY SURVEYOR'S OFFICE

State Plane grid coordinates NAD83 (NSRS 2007):  
 North: 1730903.33 East: 3172645.31 (U.S. survey feet)

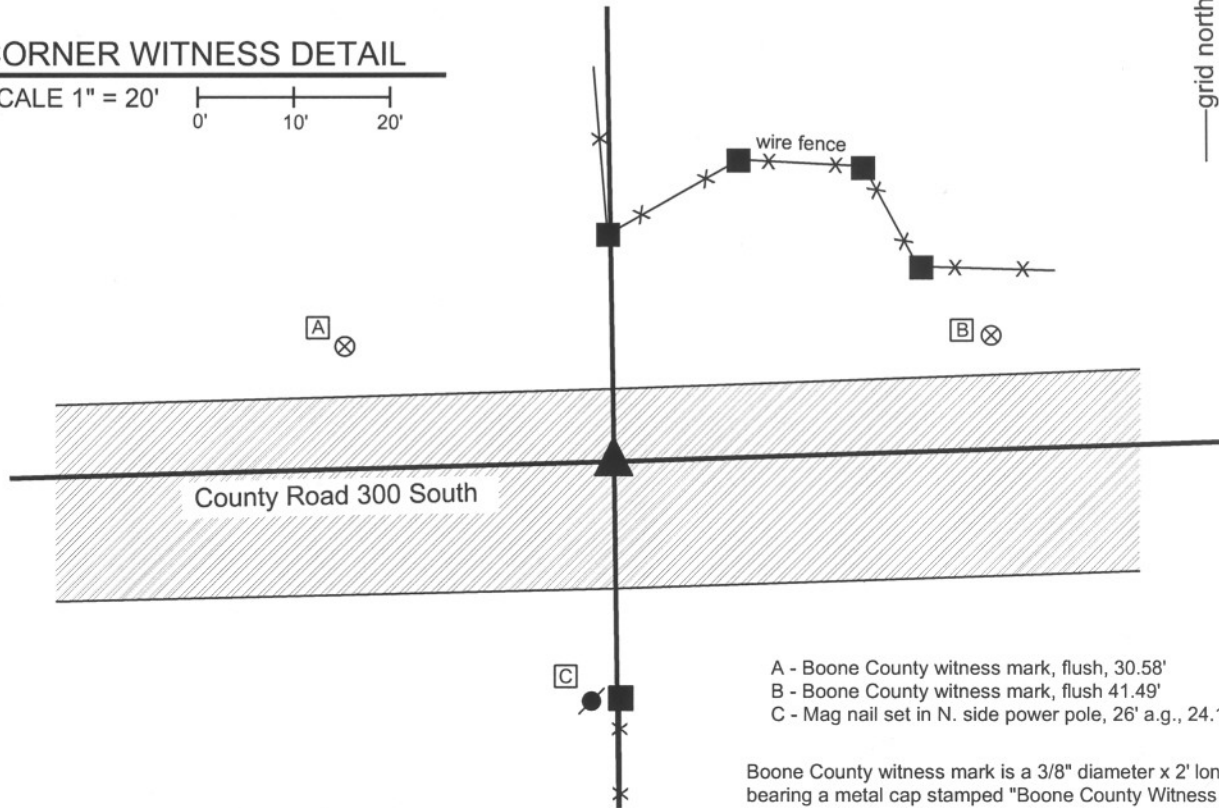
Type of monument: Harrison, 4" disk 'Section Corner'  
 Depth: One inch below adjacent road surface

Indiana tie card references:  
 IN02\_T18NR2E15\_72      IN02\_T18NR2E16\_80  
 IN02\_T18NR2E21\_08      IN02\_T18NR2E22\_00



### CORNER WITNESS DETAIL

SCALE 1" = 20'  
 0'      10'      20'



- A - Boone County witness mark, flush, 30.58'
- B - Boone County witness mark, flush 41.49'
- C - Mag nail set in N. side power pole, 26' a.g., 24.1'

Boone County witness mark is a 3/8" diameter x 2' long rebar bearing a metal cap stamped "Boone County Witness Point."

The harrison monument was set in place of a mag nail found.

A BCS record of August 13-14, 1866 states "Reestablished. Set a Rock 12.8 by 8 in marked +. One under it 8.5 by 3 in marked + on top." No BCS tie cards were found for this corner. Excavation for this corner occurred on August 11, 2008. Prior to excavation a mag nail was visible 3 inches deep in a hole in the asphalt. Excavation revealed another, smaller nail directly below the mag. Excavation also revealed modern sub-base material below the asphalt. This appears to be an area of slight cut and it is considered most likely that the stone was removed during the previous construction. The two nails were located slightly north of the center of the road in line with the old corner post to the north and at the northerly prolongation of the old fence to the south. The harrison monument was set in the position of the nails. The area of excavation was 5 feet E-W by 6.5 feet N-S, centered on the nail E-W and extending to 4.5 feet south of the nail.

This corner was originally established as a wood post in July, 1821.



*Kenneth E. Hedge*  
 Kenneth E. Hedge, County Surveyor

Eagle Twp

*James S. Swift*  
 James S. Swift, IN LS 20200054

Union Twp

March 18, 2009

Section 16 T18N, R2E	Section 15 T18N, R2E
Section 21 T18N, R2E	Section 22 T18N, R2E

# SECTION CORNER RECORD

SE 300-950

## BOONE COUNTY SURVEYOR'S OFFICE

State Plane grid coordinates NAD83 (NSRS 2007):  
North: 1730988.18 East: 3175350.09 (U.S. survey feet)

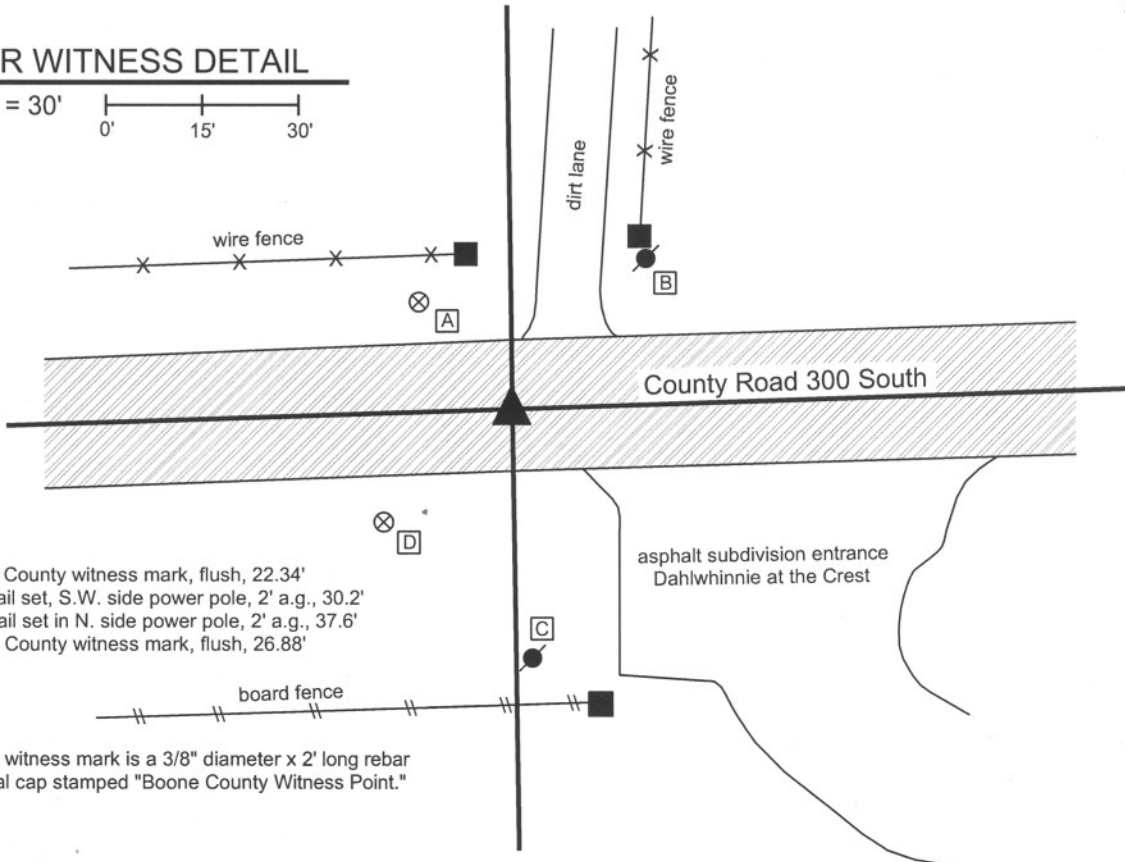
Type of monument: Harrison, 4" disk 'Section Corner'  
Depth: One inch below adjacent road surface

Indiana tie card references:  
IN02\_T18NR2E15\_76  
IN02\_T18NR2E22\_04



### CORNER WITNESS DETAIL

SCALE 1" = 30'



- A - Boone County witness mark, flush, 22.34'
- B - Mag nail set, S.W. side power pole, 2' a.g., 30.2'
- C - Mag nail set in N. side power pole, 2' a.g., 37.6'
- D - Boone County witness mark, flush, 26.88'

Boone County witness mark is a 3/8" diameter x 2' long rebar bearing a metal cap stamped "Boone County Witness Point."

The harrison monument was set over the etched "+" on the top of a stone found.  
 A BCS record of August 13-14, 1866 states "Reestablished. Set a rock 18.13 by 13 marked + on top..." A tie card provided by Paul I. Cripe, Inc. which is not dated but is referenced to Survey Book 1, page 1 (certified January 25, 1989, recorded April 28, 1989) states "RRS with 'x' over stone with '+'."  
 This corner was excavated on August 7, 2008. Prior to excavation, a mag nail was visible approximately 2 inches deep in a hole in the asphalt.  
 Excavation revealed a railroad spike at 6 inches deep, slightly north and west of the mag nail. The stone was found at 15 inches deep with an etched "+" on top. The railroad spike was directly over the "+" With the top 10 inches of the stone exposed, the stone measured 13 inches by 11 inches. The harrison monument was set over the etched "+," which is also in place of the railroad spike.  
 This corner was originally established as a wood post in July, 1821.



*Kenneth E. Hedge*  
Kenneth E. Hedge, County Surveyor

*James S. Swift*  
James S. Swift, IN LS 20200054

March 11, 2009

Union Township

Section 15  
T18N, R2E

Eagle Township

Section 22  
T18N, R2E

PHOTOGRAPHIC DOCUMENTATION

Date of photography: August 7, 2008

Corner stone - top exposed.



Corner stone from above, wet.



Corner stone - close up.



Corner stone - close up with etched "+" enhanced for ease of visual detection.



For details and documentation, refer to related sheet "Section Corner Record."

# SECTION CORNER RECORD

SE 350-900

## BOONE COUNTY SURVEYOR'S OFFICE

State Plane grid coordinates NAD83 (NSRS 2007):  
North: 1728255.59 East: 3172679.79 (U.S. survey feet)

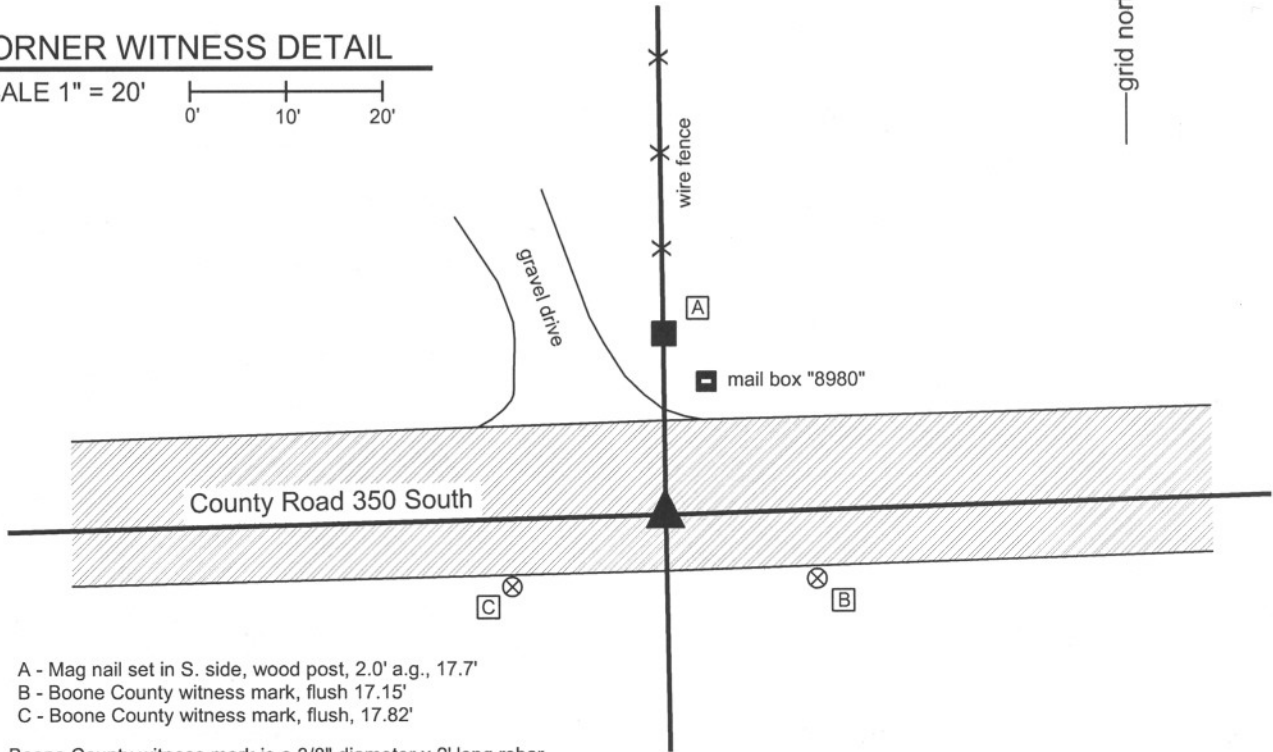
Type of monument: Harrison, 4" disk 'Section Corner'  
Depth: One inch below adjacent road surface

Indiana tie card references:  
IN02\_T18NR2E21\_44  
IN02\_T18NR2E22\_36



### CORNER WITNESS DETAIL

SCALE 1" = 20'  
0' 10' 20'



- A - Mag nail set in S. side, wood post, 2.0' a.g., 17.7'
- B - Boone County witness mark, flush 17.15'
- C - Boone County witness mark, flush, 17.82'

Boone County witness mark is a 3/8" diameter x 2' long rebar bearing a metal cap stamped "Boone County Witness Point."

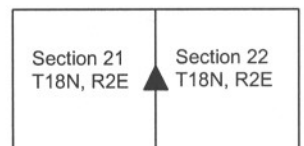
The harrison monument was set over the top, center of a stone found. No old BCS stone records or tie cards were found for this corner. Excavation occurred on June 11, 2008. Prior to excavation a railroad spike was visible in a hole 3 inches deep. The source of this monument is not known but it has been held for private surveys in this vicinity. Excavation yielded a stone found at 12 inches deep, the top, center of which is 1.1 foot south and 0.1 foot east of the railroad spike. The stone measures 16 inches N-S by 12 inches E-W by 10 inches thick. The bottom 4 inches are embedded in the clay layer below the road bed. The stone appeared to be stable and undisturbed. Refer to the attached sheet for photographic documentation. The harrison monument was set directly over the top, center of the stone. This corner was originally established as a wood post in July, 1821.



*Kenneth E. Hedge*  
Kenneth E. Hedge, County Surveyor

*James S. Swift*  
James S. Swift, IN LS 20200054  
March 11, 2009

Eagle Township





PHOTOGRAPHIC DOCUMENTATION

Date of photography: June 11, 2008

Corner stone - overhead view from west.



Corner stone - overhead view from south.



View from east looking across the stone and along County Road 250 South to the west.



View from north looking across stone to the wood end post to the south. The end post is the northerly terminus of an old fence.



For details and documentation, refer to related sheet "Section Corner Record."

# SECTION CORNER RECORD

SE 400-900

## BOONE COUNTY SURVEYOR'S OFFICE

State Plane grid coordinates NAD83 (NSRS 2007):

North: 1725616.31 East: 3172723.18 (U.S. survey feet)

Type of monument: Harrison, 4" disk 'Section Corner'

Depth: One inch below adjacent road surface

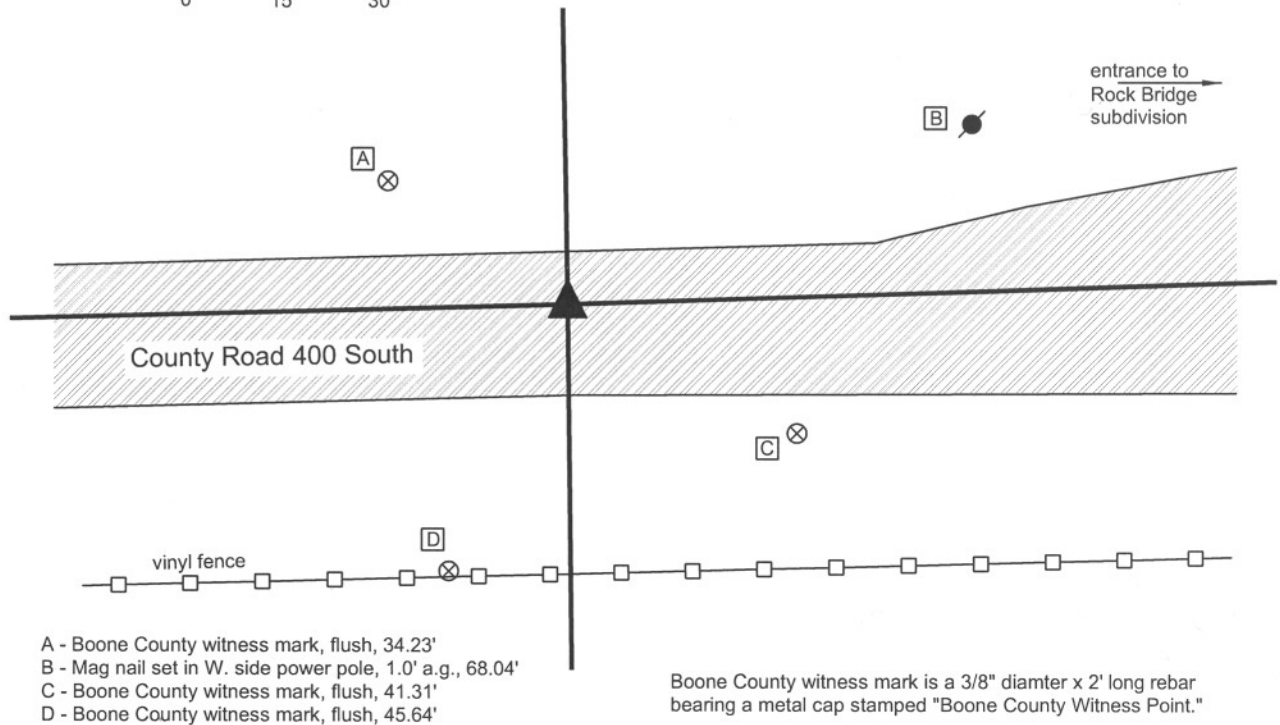
Indiana tie card references:

IN02\_T18NR2E21\_80 IN02\_T18NR2E22\_72

IN02\_T18NR2E28\_08 IN02\_T18NR2E27\_00

### CORNER WITNESS DETAIL

SCALE 1" = 30'



The harrison monument was set in the position of a railroad spike found 3 feet north of the approximate center of County Road 400 South and 6 inches below grade. The railroad spike is demonstrated on several surveys and has been held as the corner for the perimeter surveys of the adjacent subdivisions. No BCS records were found for this corner beyond the original establishment of the corner in July, 1821. An area 4 feet E-W by 7 feet N-S, centered on the railroad spike in the E-W dimension and extended 4 feet south and 3 feet north of the spike was excavated November 29, 2007. Excavation yielded a 5/8 inch rebar and 1/2 inch i.d. iron pipe seperated by approximately 3 inches E-W. The railroad spike was above these monuments and centered between them in the E-W dimension. No other monuments were found. The railroad spike, rebar and pipe were all removed during excavation and the harrison set in the position of the railroad spike. This corner was originally established as a wood post in July 1821.

Eagle Township



*Kenneth E. Hedge*  
 Kenneth E. Hedge, County Surveyor

*James S. Swift*  
 James S. Swift, IN LS 20200054  
 March 11, 2009

Section 21 T18N, R2E	Section 22 T18N, R2E
Section 28 T18N, R2E	Section 27 T18N, R2E

# SECTION CORNER RECORD

SE 400-950

## BOONE COUNTY SURVEYOR'S OFFICE

State Plane grid coordinates NAD83 (NSRS 2007):

North: 1725702.56 East: 3175415.67 (U.S. survey feet)

Type of monument: Harrison, 4" disk 'Section Corner'

Depth: 2 inches below surface of gravel drive.

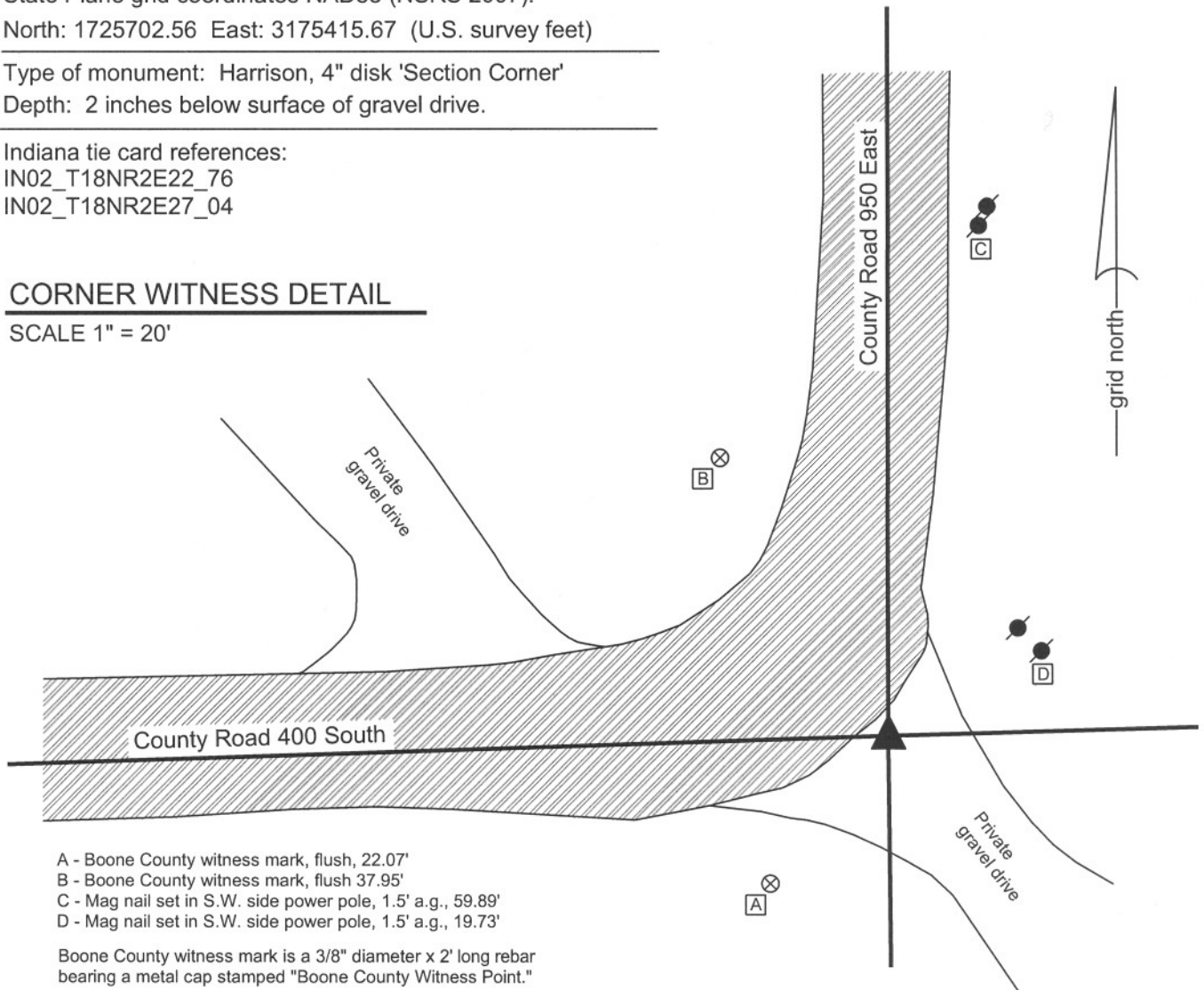
Indiana tie card references:

IN02\_T18NR2E22\_76

IN02\_T18NR2E27\_04

### CORNER WITNESS DETAIL

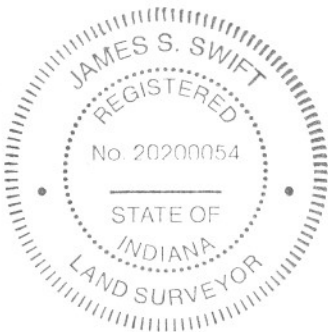
SCALE 1" = 20'



- A - Boone County witness mark, flush, 22.07'
- B - Boone County witness mark, flush 37.95'
- C - Mag nail set in S.W. side power pole, 1.5' a.g., 59.89'
- D - Mag nail set in S.W. side power pole, 1.5' a.g., 19.73'

Boone County witness mark is a 3/8" diameter x 2' long rebar bearing a metal cap stamped "Boone County Witness Point."

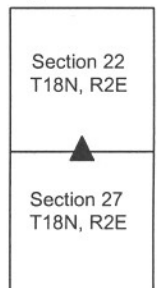
The Harrison monument was set over the etched "+" on a stone found and accepted as marking the corner. The stone matches the description in a previous BCS record, dated July 22 and August 7, 1890: "Re-established at intersection of lines from North and East. Rock + 22.12.8 at corner." The top of the stone is 10 inches below the surface of the gravel drive. The etched "+" is clearly visible on the top of the stone. The stone is not regular in shape, but the 12 x 8 dimension can be discerned. The stone was not excavated to the full 22 inch depth. A BCS tie card, dated 5/23/1991, calls for a "5/8 inch rebar, 4 inches deep" as being the corner. This rebar was found and is known to have been held for numerous private surveys. During excavation, it was discovered that the rebar was situated against the north side of the stone, with the top of the rebar being 0.23' N and 0.1' W of the "+" on the stone. An iron pipe, for which no previous record has been found, was found against the east side of the stone. A short section of 18 inch diameter plastic tile was set over the stone, and the Harrison monument, truncated at 10 inches, was set within this piece of tile. This corner was originally established in July, 1821.



*Kenneth E. Hedge*  
Kenneth E. Hedge, County Surveyor

*J. S. Swift*  
James S. Swift, IN LS 20200054  
February 1, 2008

Eagle Township





## PHOTOGRAPHIC DOCUMENTATION

Date of photography: 11/29/2007

View of the stone as exposed.  
The top of the stone is approximately 10 inches below the surface of the gravel driveway.  
The stone matches the record description of "Rock, +, 22.12.8"

The stone was encased in an 18" diameter plastic tile and a Harrison monument was truncated at 10 inches and set directly over the "+" on the top of the stone.



Same picture as above, with the etched "+" enhanced for ease of visual detection.





# SECTION CORNER RECORD

# SE 400-1000

## BOONE COUNTY SURVEYOR'S OFFICE

State Plane grid coordinates NAD83 (NSRS 2007):

North: 1725778.50 East: 3178101.90 (U.S. survey feet)

Type of monument: Stone (blue granite)

Depth: top at 2 inches above grade

Indiana tie card references:

IN02\_T18NR2E22\_80

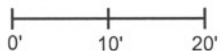
IN02\_T18NR2E23\_72

IN02\_T18NR2E27\_00

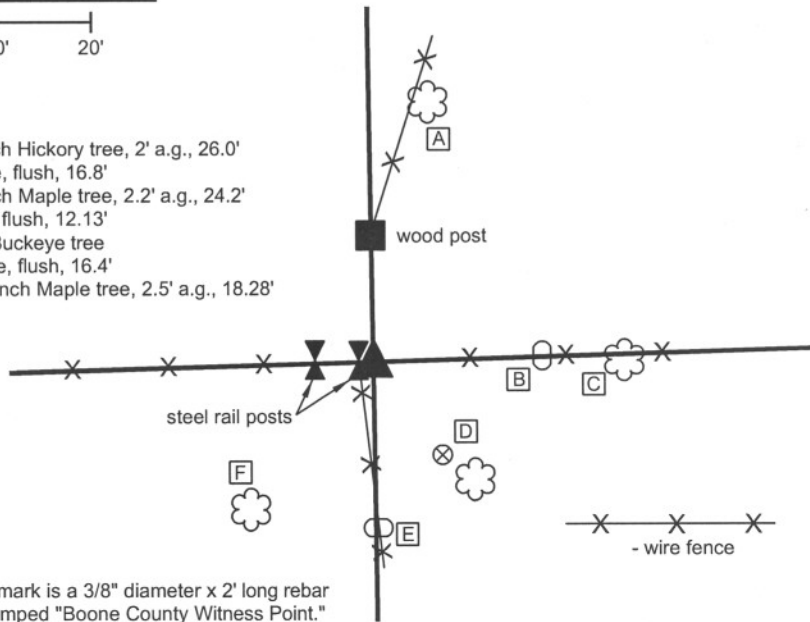
IN02\_T18NR2E26\_08

### CORNER WITNESS DETAIL

SCALE 1" = 20'



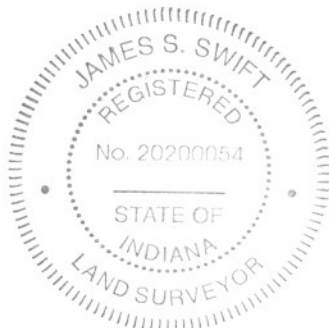
- A - Mag nail set in S. side, 13 inch Hickory tree, 2' a.g., 26.0'
- B - Top, west side, witness stone, flush, 16.8'
- C - Mag nail set in W. side, 24inch Maple tree, 2.2' a.g., 24.2'
- D - Boone County witness mark, flush, 12.13'  
point is 1.9' N.W. of 16 inch Buckeye tree
- E - Top, north side, witness stone, flush, 16.4'
- F - Mag nail set in N.E. side, 16 inch Maple tree, 2.5' a.g., 18.28'



Boone County witness mark is a 3/8" diameter x 2' long rebar bearing a metal cap stamped "Boone County Witness Point."

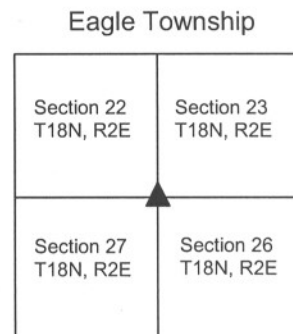
A BCS record of March 14-15, 1894 states "Re-established by intersection of lines. Set Blue rock + 20.9.8 at corner. White flint rock 16.10.6 East 25 links. Blue rock W 18.14.11 South 25 links."

All three rocks were found and the corner stone was found to be situated at approximately the 25 link (16.5 feet) distance from the witness stones (see measured tie distances above.) The + is not visible on the corner stone, though it is clearly a blue granite stone. The stone was left in place and witnessed with a orange fiberglass witness post. This stone is noted as being found on numerous recorded surveys. This corner was originally established as a wood post in July 1821.



*Kenneth E. Hedge*  
 Kenneth E. Hedge, County Surveyor

*James S. Swift*  
 James S. Swift, IN LS 20200054  
 March 11, 2009



PHOTOGRAPHIC DOCUMENTATION

Date of photography: April 9, 2008

Corner stone as visible prior to excavation - view from southeast.



Corner stone with some of the stone exposed - overhead view from southeast.



Corner stone - view from above.



Corner stone - side view from north.



Record witness stone to the south.



Record witness stone to the east.



For details and documentation, refer to related sheet "Section Corner Record."