

SECTION CORNER RECORD

SW 300-200

BOONE COUNTY SURVEYOR'S OFFICE

State Plane grid coordinates NAD83 (2011):

North: 1729601.45 East: 3114284.62 (U.S. survey feet)

Type of monument: 5/8" Rebar with metal cap (see notes)

Depth: Four inches above adjoining ground

Indiana tie card references:

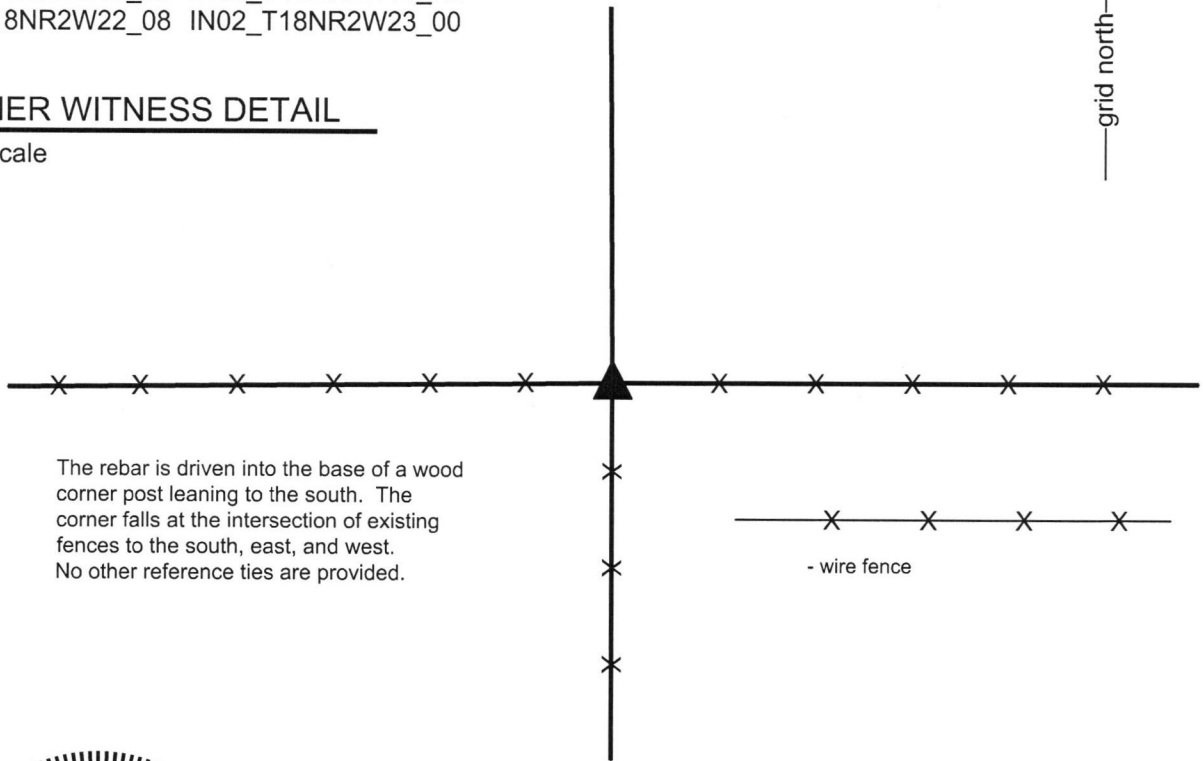
IN02_T18NR2W15_80 IN02_T18NR2W14_72

IN02_T18NR2W22_08 IN02_T18NR2W23_00



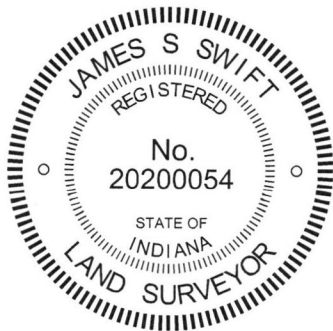
CORNER WITNESS DETAIL

Not to scale



The rebar is driven into the base of a wood corner post leaning to the south. The corner falls at the intersection of existing fences to the south, east, and west. No other reference ties are provided.

- wire fence



The rebar was driven into the subterranean base of a wood corner post.

No specific descriptions of this corner were found in the BCS Surveyor's Record nor were any recent BCS tie cards found referencing this corner.

Substantial local evidence of the corner exists in the form of a wood corner post at the intersection of old, well established fences to the south, east and west. The position of the post works well with respect to proximate corners. Manual excavation around the base of the post on October 18, 2016 yielded neither stone nor other evidence of the corner found. The post was accepted as providing the best available evidence of the corner and was held as marking the corner. The post leans to the south. A 30 inch length of 5/8 inch diameter rebar was driven vertically at the approximate position of the base of the post. The rebar was driven into the base of the post below ground. Above ground, the top of the rebar and the metal cap appear to be at the north edge of the leaning post. As the rebar is intended to occupy the same position of the base of the post, the rebar is held as marking the specific location of the corner.

This corner was established as a wood post in 1820.

Kenneth E. Hedge, County Surveyor

James S. Swift, IN LS 20200054

March 23, 2017

Jefferson
Township

Section 15 T18N, R2W	Section 14 T18N, R2W
Section 22 T18N, R2W	Section 23 T18N, R2W

Jackson
Township

SECTION CORNER RECORD

SW 300-250

BOONE COUNTY SURVEYOR'S OFFICE

State Plane grid coordinates NAD83 (2011):

Stone: North: 1729571.71 East: 3111636.28 (U.S. survey feet)

Witness Rebar: North: 1729571.76 East: 3111636.03 (U.S. survey feet)

Type of monument: Stone with hole drilled in high point;
witnessed by a 24" length of 5/8" diameter rebar with aluminum
cap stamped 'Boone County Surveyor

Stone depth: 11" below grade

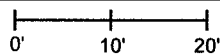
Witness rebar depth: 13" below grade

Indiana tie card references:

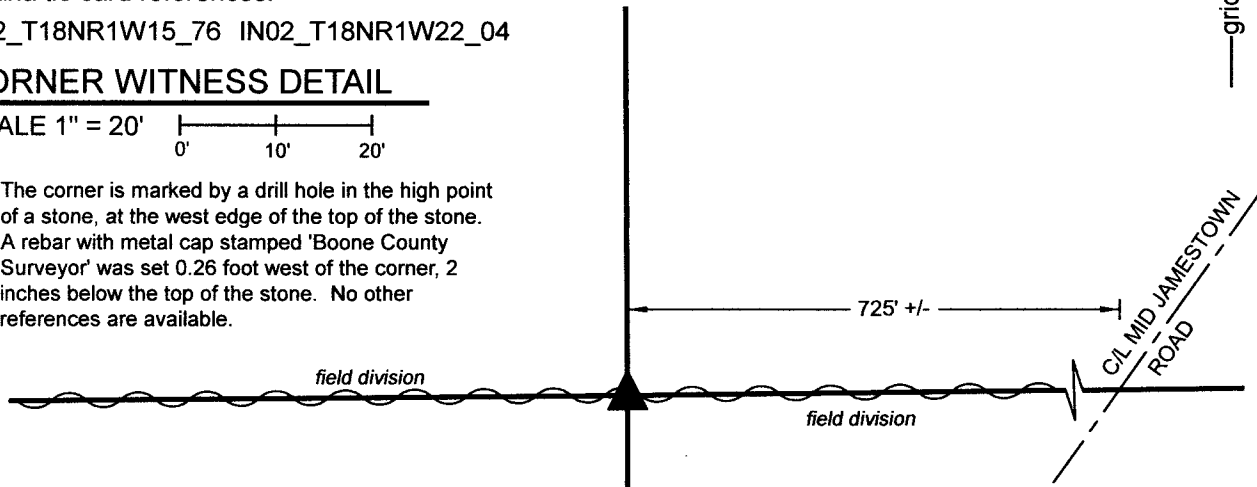
IN02_T18NR1W15_76 IN02_T18NR1W22_04

CORNER WITNESS DETAIL

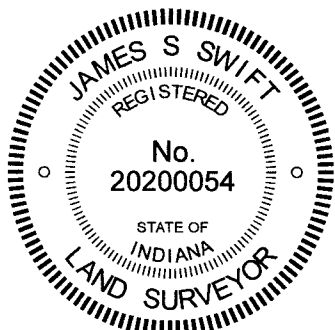
SCALE 1" = 20'



The corner is marked by a drill hole in the high point of a stone, at the west edge of the top of the stone. A rebar with metal cap stamped 'Boone County Surveyor' was set 0.26 foot west of the corner, 2 inches below the top of the stone. No other references are available.



The stone was found in place and held as the corner. The rebar with cap was set adjacent to the stone as a witness. A BCS record of September 30, 1901 states, with respect to this corner, "Found soft rock + in correct place." No recent BCS tie cards were found referencing this corner. A survey recorded as Instrument 201500003481 in the Office of the Boone County Recorder shows the corner as a 'Headpost.' This corner was excavated on October 28, 2022. Prior to excavation, the position of the headpost shown on the 2015 survey was computed with respect to other monuments shown on that survey. The headpost was no longer visible above-ground, and had not been visible since the spring of 2016, when reconnaissance was first performed by this office at this corner. The computed position for the headpost worked well with standing east-west fence on the east side of Mid-Jamestown road and fell along an east-west field division. Probing at the computed position revealed a stone found at 11 inches deep, in the east-west field division. The stone appeared to be a sandstone and was distinctly a 'soft rock,' matching the description in the 1901 record. The stone measured 17 inches E-W by 11 inches N-S. The west edge of the stone was approximately 6 inches tall and slopes underneath to at least 9 inches tall. The stone was distinctly oriented in cardinal directions, with a high point at the west end, and did not appear to have been disturbed. The headpost was not found and appears to have been fully removed. The computed position for the post fell less than one foot WNW of the top, high point of the stone, indicating that the high point of the stone was adjacent to the old post, which fits a pattern observed at other corners. Several possible marks were observed on the stone, though none could be positively identified as the '+' mark called in the 1901 record. Being a 'soft rock' of sandstone composition, the top of the stone was not smooth and a specific mark may have been obscured by the generally rough surface of the top of the rock. It is noted that the vast majority of stones found marking corners throughout the county are granite. The specific call for a 'soft rock' is unusual and the fact that the found stone was clearly not granite, and easily chipped with a spade, was held as confirmation that this rock was the monument called for in the 1901 record. The position adjacent to the post (now removed) and the east-west orientation of the rock, with high point adjacent to the post, is held as further confirmation. The stone was accepted as being the same monument called-for in the 1901 record and was held as marking the corner. The high point on the stone was held as the specific position of the corner. The stone was left in place and a small hole was drilled into the high point. A 24-inch length of 5/8-inch diameter rebar with metal cap stamped 'Boone County Surveyor' was set adjacent to the west edge of the stone, approximately 2 inches below the top of the stone. The drill hole on the top, west edge of the stone represents the position of the corner. The rebar is intended as a witness to the corner. As this corner falls in a field division with no standing fences or posts, no lath or t-posts were set to witness the stone. The corner falls approximately 725 feet west of the center of Mid-Jamestown Road.



Kenneth E. Hedge
Kenneth E. Hedge, County Surveyor

James S. Swift
James S. Swift, IN LS 20200054
November 16, 2022

Center Township

Section 15
T18N, R1W

Harrison Township

Section 22
T18N, R1W

SECTION CORNER RECORD

SW 300-300

BOONE COUNTY SURVEYOR'S OFFICE

State Plane grid coordinates NAD83 (2011):

North: 1729546.06 East: 3109001.84 (U.S. survey feet)

Type of monument: Harrison, 4" disk 'Section Corner'

Depth: Four inches above adjacent grade

Indiana tie card references:

IN02_T18NR1W16_80 IN02_T18NR1W15_72

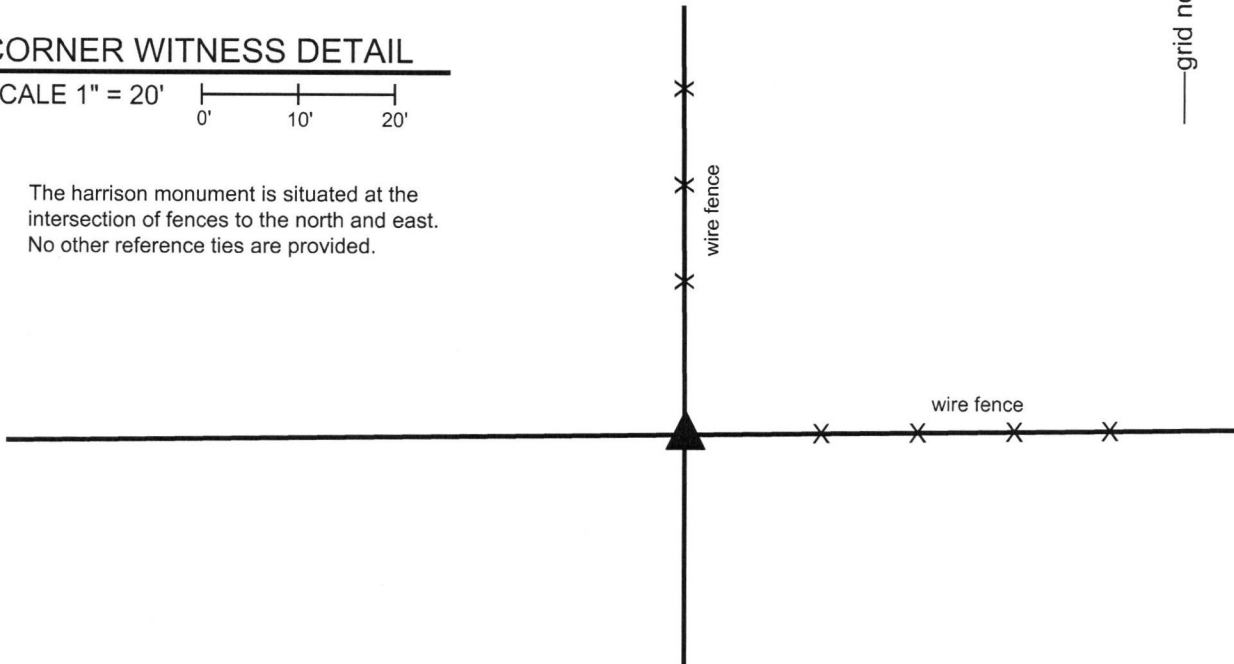
IN02_T18NR1W21_08 IN02_T18NR1W22_00



CORNER WITNESS DETAIL

SCALE 1" = 20'

The Harrison monument is situated at the intersection of fences to the north and east. No other reference ties are provided.



The Harrison monument was set in place of a wood corner post found.

No specific descriptions of this corner were found in the BCS Surveyor's Record nor were any recent BCS tie cards found referencing this corner.

Substantial local evidence of the corner was found in September, 2016 in the form of an ancient wood corner post at the intersection of old, well established fences to the north and east. The position of the post fits well with respect to the relative positions of proximate corners. Manual excavation around the base of the post on September 29, 2016 yielded numerous rocks found, none of which appeared to have been set for the specific purpose of marking the corner. A rock to the south of the post was found on the surface of the ground in a horizontal position. A rock to the west of the post was found to have a distinct high point but the remainder of the rock was found to be quite massive with almost all of the rock buried. Neither of these rocks, nor any of the smaller rocks found in this vicinity, could be positively identified as marking the corner. The post was held as the best evidence of the original location of the corner. The post was removed during excavation and a Harrison monument was set in place of the post. The monument is anchored to the large rock to the west. The rock to the south was positioned such that it would provide protection for the monument from agricultural machinery working near the corner.

This corner was originally established as a wood post in 1820.

Kenneth E. Hedge, County Surveyor

James S. Swift, IN LS 20200054
March 23, 2017



Jefferson Township

Jackson Township

Marion Township

Section 16 T18N, R1W	Section 15 T18N, R1W
Section 21 T18N, R1W	Section 22 T18N, R1W

PHOTOGRAPHIC DOCUMENTATION

Date of photography: 9/27/2016-10/3/2016

The corner prior to excavation.
View of the leaning corner post from the south.



The post removed from the ground and the hole where the post previously stood.



A vertical section of storm pipe, to be filled with concrete to support the Harrison monument.



The final monument, viewed from the south.



For details and documentation, refer to related sheet "Section Corner Record."

SECTION CORNER RECORD

SW 350-300

BOONE COUNTY SURVEYOR'S OFFICE

State Plane grid coordinates NAD83 (2011):
North: 1726897.45 East: 3109000.90 (U.S. survey feet)

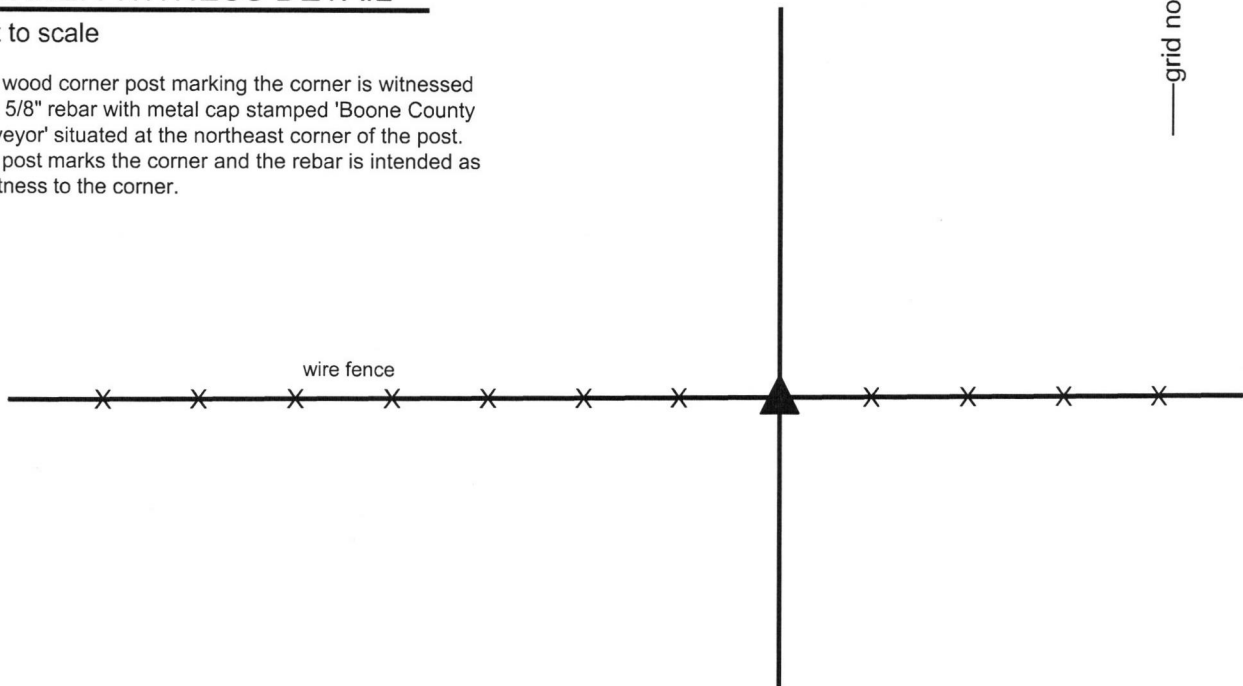
Type of monument: wood corner post

Indiana tie card references:
IN02_T20NR2E15_80 IN02_T20NR2E14_72

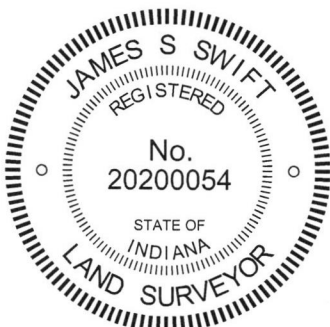
CORNER WITNESS DETAIL

Not to scale

The wood corner post marking the corner is witnessed by a 5/8" rebar with metal cap stamped 'Boone County Surveyor' situated at the northeast corner of the post. The post marks the corner and the rebar is intended as a witness to the corner.



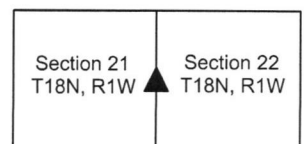
The wood corner post was found in place. No specific descriptions of this corner were found in the BCS Surveyor's Record nor were any recent BCS tie cards found referencing this corner. The wood corner post is situated at the intersection of established fences to the east and west and a former fence to the north, as evidenced by fencing attached to the post but clipped off. The position of the post fits well with the relative positions of proximate corners. Minor excavation and probing on October 5, 2016 yielded no rocks found around the post. The post was accepted as the best available evidence of the corner and held as marking the corner. A 36 inch length of 5/8 inch rebar with a metal cap stamped "Boone County Surveyor" was set adjacent to the post on the northeast side. The post represents the corner and the rebar is set as a witness monument. The specific position of the post held as marking the corner is 0.6 foot west and 0.7 foot south of the rebar. This corner was originally established as a wood post in 1820.



Kenneth E. Hedge
Kenneth E. Hedge, County Surveyor

James S. Swift
James S. Swift, IN LS 20200054
March 23, 2017

Harrison Township



SECTION CORNER RECORD

SW 400-200

BOONE COUNTY SURVEYOR'S OFFICE

State Plane grid coordinates NAD83 (2011):

North: 1724281.48 East: 3114332.97 (U.S. survey feet)

Type of monument: Harrison, 4" disk 'Section Corner'

Depth: Six inches below adjacent road surface

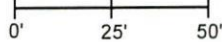
Indiana tie card references:

IN02_T18NR1W23_72 IN02_T18NR1W22_80

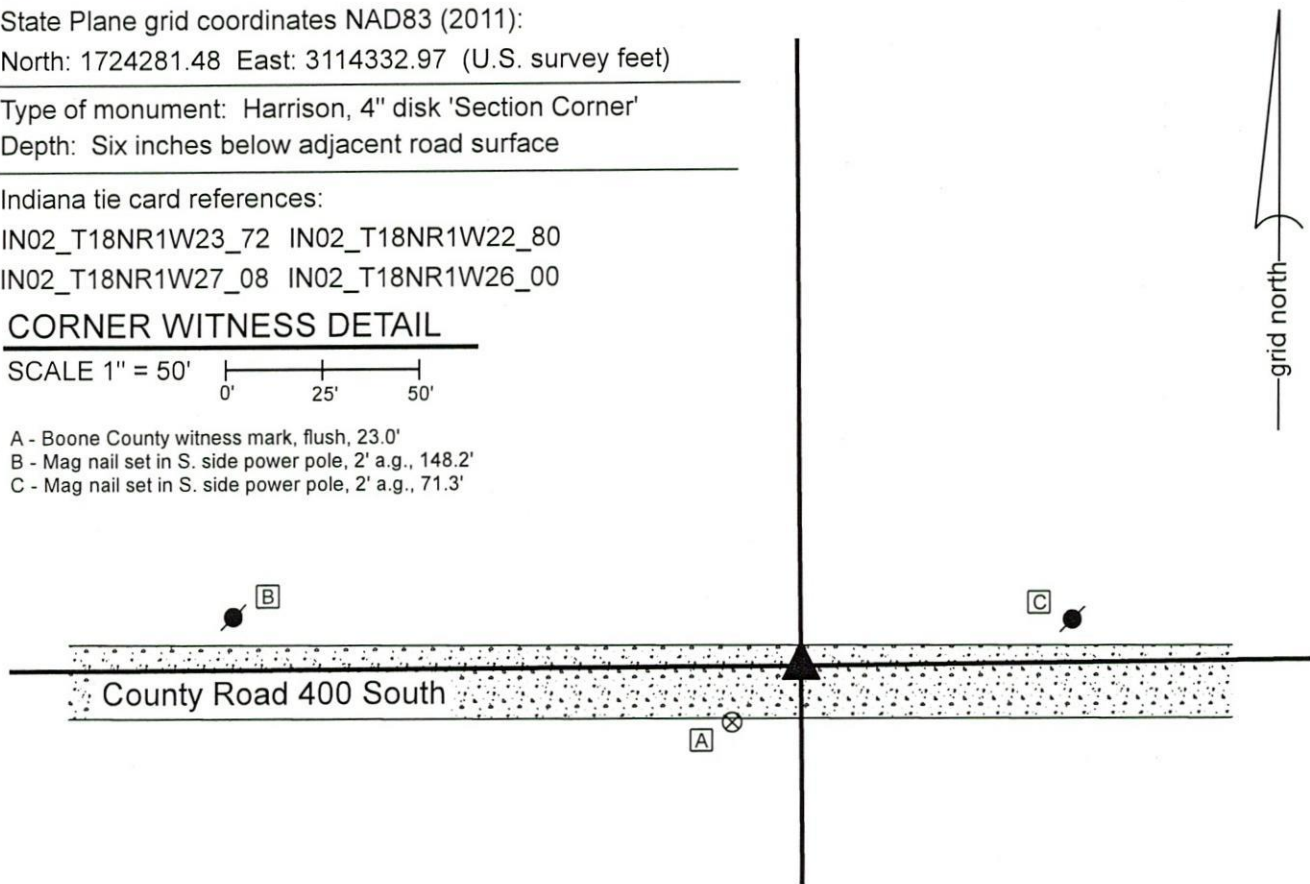
IN02_T18NR1W27_08 IN02_T18NR1W26_00

CORNER WITNESS DETAIL

SCALE 1" = 50'



- A - Boone County witness mark, flush, 23.0'
- B - Mag nail set in S. side power pole, 2' a.g., 148.2'
- C - Mag nail set in S. side power pole, 2' a.g., 71.3'

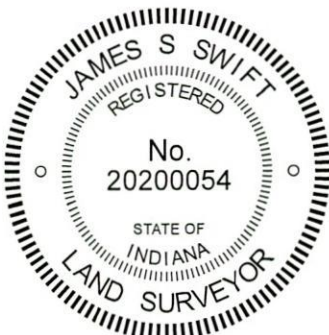


The Harrison monument was set over a stone found.

A BCS record dated March 27 & 31, 1893 states, with respect to this corner, "Set Rock + 12.6.6 at corner. Set Rock no mark 8.8.6 under." No recent BCS tie cards were found referencing this corner.

Excavation was performed at this corner on January 13, 2020. Prior to excavation, a 5/8 inch rebar was found at the surface of the gravel road, bent at the top. Excavation revealed two stones found slightly northwest of the rebar. The record top stone was found at 3 inches deep. This stone was 12 inches tall by 8 inches E-W by 6 inches N-S, matching two of the dimensions called in the 1893 record and 2 inches different than the third dimension. A vague etched "+" mark was visible on the south side of the stone, near the top. The stone was removed from the road and another stone was found directly below, at 18 inches deep. The top of this stone was measured to be 9 inches N-S by 8 1/2 inches E-W with 3 inches of the top exposed. The full height of the stone was not measured though it appeared to be horizontal and not much taller than that which was exposed. No mark was observed on the top of the stone. The dimensions of both stones were close to but not precisely matching the 1893 descriptions. The stones were accepted as being the same monuments set in 1893 and were held as marking the corner. The lower stone was left in place and a Harrison monument was set over the lower stone in the same horizontal position as the distinct high point of the upper stone, as originally found.

The vertical shaft of the disturbed rebar, removed during excavation, had been 2.4 feet east and 0.5 foot south of the top, high point of the upper stone. This corner was originally established as a wood post in 1820.



Kenneth E. Hedge
Kenneth E. Hedge, County Surveyor

James S. Swift
James S. Swift, IN LS 20200054
January 22, 2020

Harrison Township

Section 22 T18N, R1W	Section 23 T18N, R1W
Section 27 T18N, R1W	Section 26 T18N, R1W

SECTION CORNER RECORD

SW 400-250

BOONE COUNTY SURVEYOR'S OFFICE

State Plane grid coordinates NAD83 (2011):

North: 1724275.02 East: 3111659.51 (U.S. survey feet)

Type of monument: Harrison, 4" disk 'Section Corner'

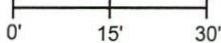
Depth: Six inches below adjacent gravel road surface

Indiana tie card references:

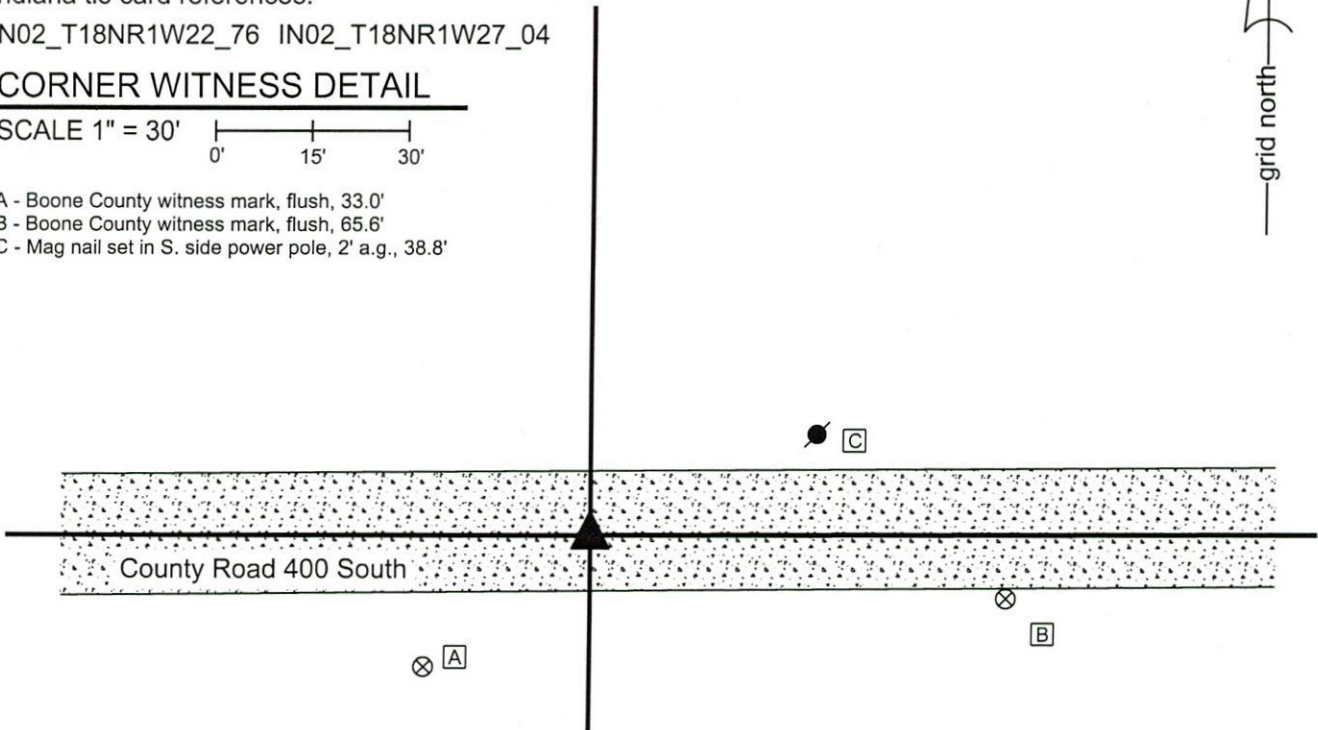
IN02_T18NR1W22_76 IN02_T18NR1W27_04

CORNER WITNESS DETAIL

SCALE 1" = 30'



- A - Boone County witness mark, flush, 33.0'
- B - Boone County witness mark, flush, 65.6'
- C - Mag nail set in S. side power pole, 2' a.g., 38.8'



The Harrison monument was set in place of horizontal piece of wood stake found.


A BCS record dated March 27 & 31, 1893 states, with respect to this corner, "reest. at intersection of Straight East-West line with line 3-4 from the South. Set Rock, no mk 15,8,6 at cor." No recent BCS tie cards were found referencing this corner.

Excavation was performed at this corner on January 13, 2020. Prior to excavation, a section of 1/2 inch diameter rebar was found at the surface of the road, bent at the top and slightly disturbed. Excavation revealed a horizontal wood stake or post at 18 inches deep, slightly west of the rebar. The piece of wood was 2 inches thick (vertical) by 4 inches E-W by 44 inches N-S, oriented north-south, perpendicular to the east-west road and section lines. Though 2 inches by 4 inches, this piece was not a modern piece of 2x4 lumber, being rough cut and of oak material. The origin of the piece of wood is not known but it was observed to be similar in dimension, character and orientation to a similar piece of wood found at BCS corner NW-900-000, the records for which referred to the monument as a 'crosslaying.' Excavation of an area 2 feet south, 3 feet north, 3 feet east and 3 feet west of the rebar did not reveal further evidence of the corner. It is noted that the road bed in the immediate vicinity of the rebar appeared to have been previously disturbed. If the rebar replaced the stone called in the 1893 record, no documentation was found to indicate that that had happened. The rebar and wood stake both fit well with the relative position of a stone found at the corner 1/2 mile east (see BCS corner SW 400-200) and the dimensions recited in the 1893 record, as adjusted by a standard index factor of 1.00415 applied to dimensions for records between 1860 and 1895. The wood stake, being the most ancient evidence and appearing so similar in character to the aforementioned 'crosslaying' was accepted as the best available evidence of the corner. A Harrison monument was set in place of the center of the stake. The rebar, removed during excavation, had been 0.3 foot north and 1.4 foot east of the position held as the corner.

This corner was originally established as a wood post in 1821.




Kenneth E. Hedge, County Surveyor


James S. Swift, IN LS 20200054
February 19, 2020

Harrison
Township

Section 22
T18N, R1W

Section 27
T18N, R1W