

SECTION CORNER RECORD

NW 200-300

BOONE COUNTY SURVEYOR'S OFFICE

State Plane grid coordinates NAD83 (2011):

North: 1756120.19 East: 3108893.60 (U.S. survey feet)

Type of monument: Harrison, 4" disk 'Section Corner'

Depth: Two inches above adjacent ground

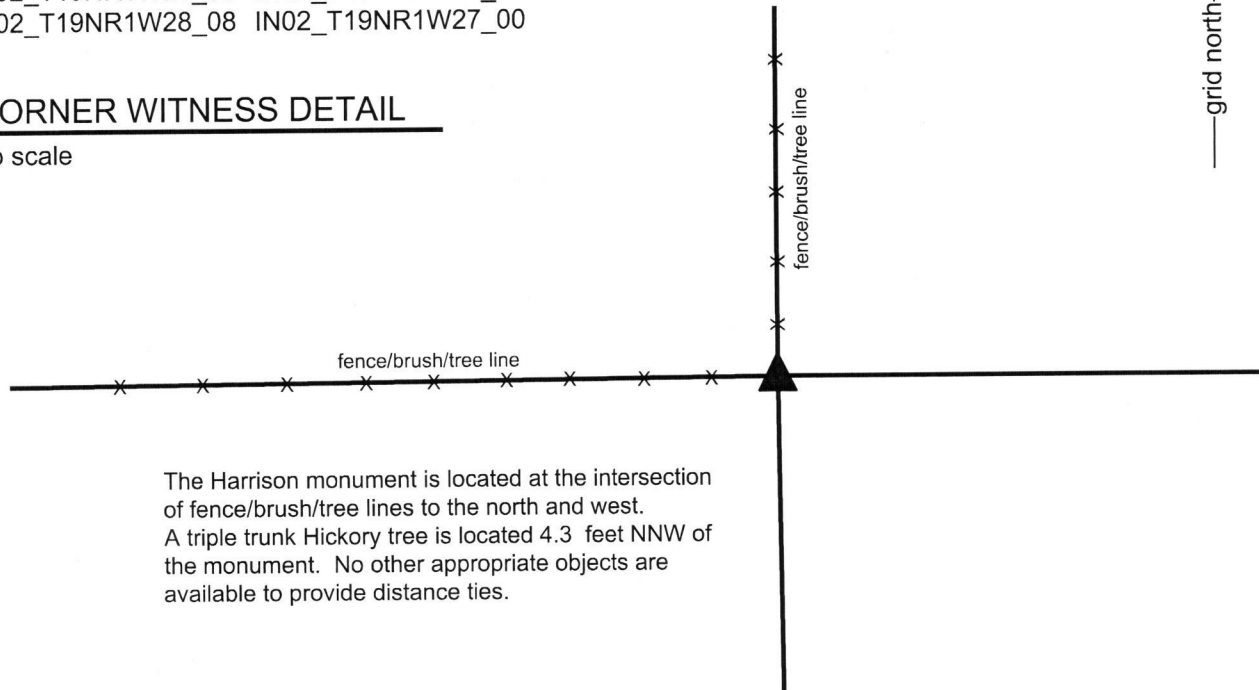
Indiana tie card references:

IN02_T19NR1W21_80 IN02_T19NR1W22_72

IN02_T19NR1W28_08 IN02_T19NR1W27_00

CORNER WITNESS DETAIL

no scale



The Harrison monument is located at the intersection of fence/brush/tree lines to the north and west. A triple trunk Hickory tree is located 4.3 feet NNW of the monument. No other appropriate objects are available to provide distance ties.

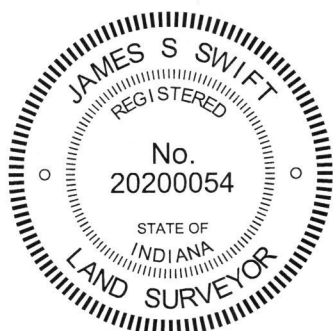
The Harrison monument was set in place of a wood corner post found.

A BCS record dated May 13-14, 1884 states, with respect to this corner, "Reest'd from O.B.T. Set Flat Rock marked +."

No recent BCS tie cards were found referencing this corner.

Excavation was performed at this corner on October 21, 2017. Prior to excavation, an ancient wood corner post was found with standing fences to the north and west and fencing cut-off toward the east. The position of the post fit well with the relative positions of proximate corners. Excavation around and in the vicinity of the post revealed several rocks found, none of which were particularly flat or had a discernable etched "+" mark. Hence, no rocks matching the 1884 record were found, nor were any rocks found which appeared to have been set as marking the corner. The post itself was accepted as providing the best available evidence of the original location of the corner. As found, the top of the post was not attached to the ground and was standing, albeit leaning substantially to the northwest, as supported by the attached fencing and brace posts. Excavation around the base of the post revealed that the old base must have rotted away as only small fragments of wood were found in the dirt below the post. The top of the post was pushed toward the northwest, but in so doing, the northerly brace was displaced and the post was left in an awkward position, suspended and leaning over the corner. The wire to the north was cut and the post was laid on the ground, adjacent to and northwest of its former position. A Harrison monument was set in the position of the bottom of the post, as originally found.

This corner was originally established as a wood post in 1829.



Kenneth E. Hedge
 Kenneth E. Hedge, County Surveyor

James S. Swift
 James S. Swift, IN LS 20200054
 November 7, 2017

Center Township

Section 21 T19N, R1W	Section 22 T19N, R1W
Section 28 T19N, R1W	Section 27 T19N, R1W

SECTION CORNER RECORD

NW 200-400

BOONE COUNTY SURVEYOR'S OFFICE

State Plane grid coordinates NAD83 (2011):

North: 1756068.65 East: 3103638.65 (U.S. survey feet)

Type of monument: Harrison, 4" disk 'Section Corner'

Depth: six inches below adjacent gravel road surface

Indiana tie card references:

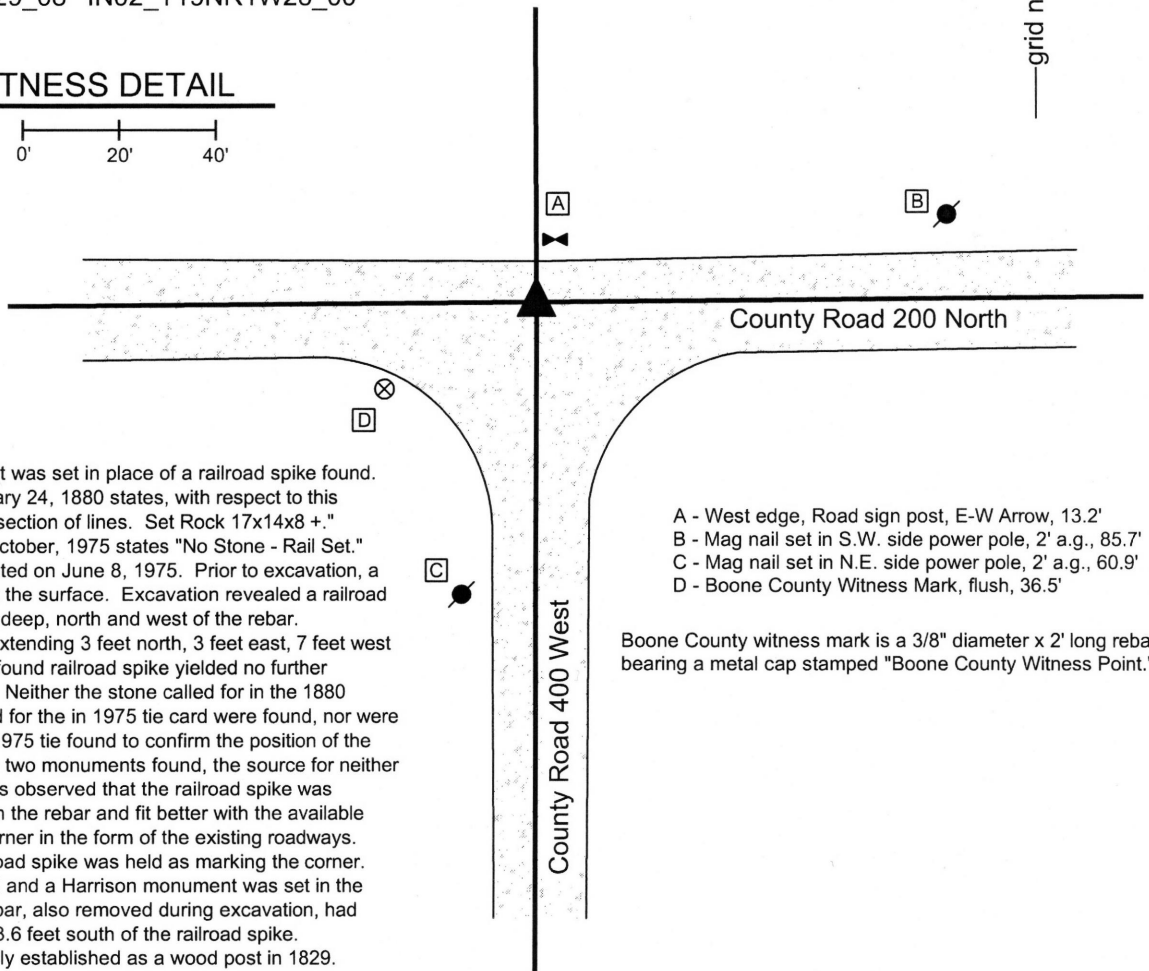
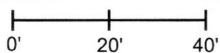
IN02_T19NR1W20_80 IN02_T19NR1W21_72

IN02_T19NR1W29_08 IN02_T19NR1W28_00



CORNER WITNESS DETAIL

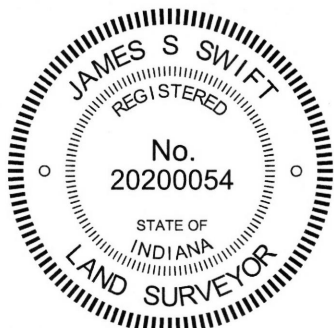
SCALE 1" = 40'



The Harrison monument was set in place of a railroad spike found. A BCS record of February 24, 1880 states, with respect to this corner, "Reestb at intersection of lines. Set Rock 17x14x8 +." A BCS tie card dated October, 1975 states "No Stone - Rail Set." This corner was excavated on June 8, 1975. Prior to excavation, a rebar was found bent at the surface. Excavation revealed a railroad spike found at 8 inches deep, north and west of the rebar. Excavation of an area extending 3 feet north, 3 feet east, 7 feet west and 7 feet south of the found railroad spike yielded no further evidence of the corner. Neither the stone called for in the 1880 record nor the rail called for the in 1975 tie card were found, nor were sufficient ties from the 1975 tie found to confirm the position of the rail. With respect to the two monuments found, the source for neither of which is known, it was observed that the railroad spike was significantly deeper than the rebar and fit better with the available local evidence of the corner in the form of the existing roadways. The position of the railroad spike was held as marking the corner. The spike was removed and a Harrison monument was set in the same position. The rebar, also removed during excavation, had been 1.0 foot east and 3.6 feet south of the railroad spike. This corner was originally established as a wood post in 1829.

- A - West edge, Road sign post, E-W Arrow, 13.2'
- B - Mag nail set in S.W. side power pole, 2' a.g., 85.7'
- C - Mag nail set in N.E. side power pole, 2' a.g., 60.9'
- D - Boone County Witness Mark, flush, 36.5'

Boone County witness mark is a 3/8" diameter x 2' long rebar bearing a metal cap stamped "Boone County Witness Point."



Kenneth E. Hedge
Kenneth E. Hedge, County Surveyor

James S. Swift
James S. Swift, IN LS 20200054
March 24, 2016

Jefferson Township	Center Township
Section 20 T19N, R1W	Section 21 T19N, R1W
Section 29 T19N, R1W	Section 28 T19N, R1W

SECTION CORNER RECORD

NW 250-300

BOONE COUNTY SURVEYOR'S OFFICE

State Plane grid coordinates NAD83 (2011):

North: 1758756.47 East: 3108880.644 (U.S. survey feet)

Type of monument: Harrison, 4" disk 'Section Corner'

Depth: Flush with adjacent road surface

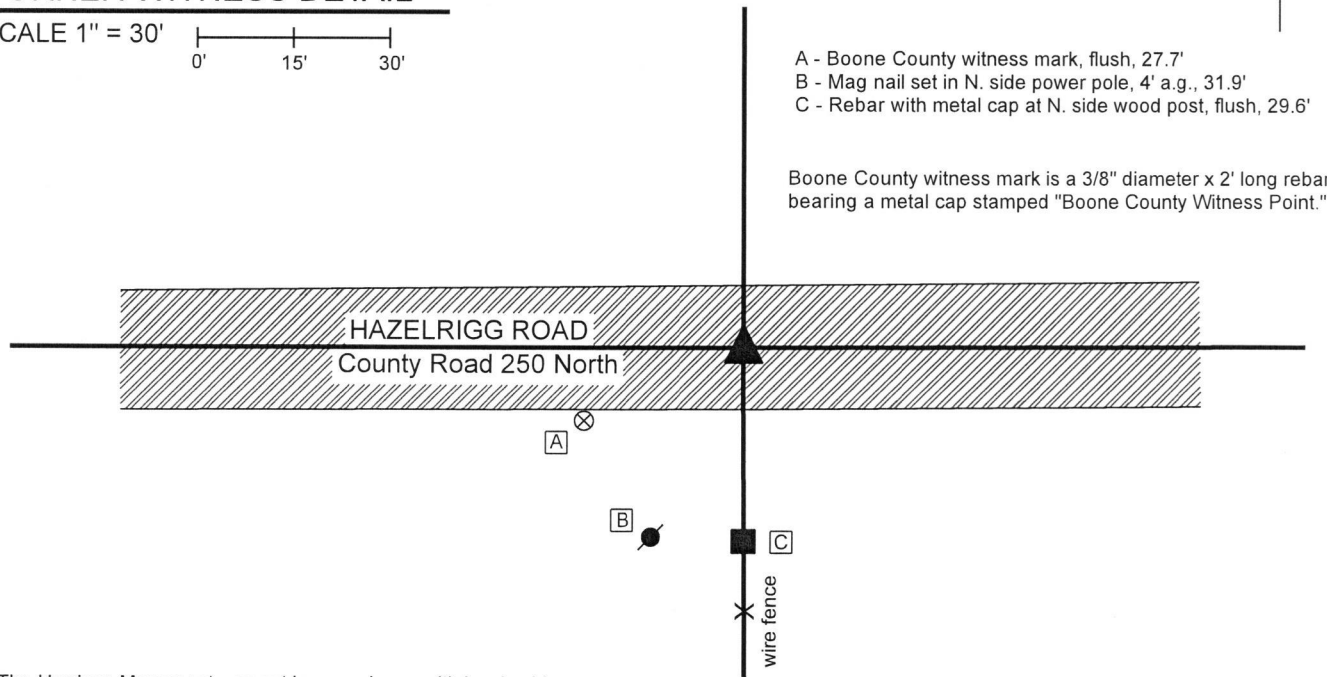
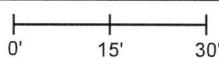
Indiana tie card references:

IN02_T19NR1W21_44 IN02_T19NR1W22_36



CORNER WITNESS DETAIL

SCALE 1" = 30'



- A - Boone County witness mark, flush, 27.7'
- B - Mag nail set in N. side power pole, 4' a.g., 31.9'
- C - Rebar with metal cap at N. side wood post, flush, 29.6'

Boone County witness mark is a 3/8" diameter x 2' long rebar bearing a metal cap stamped "Boone County Witness Point."

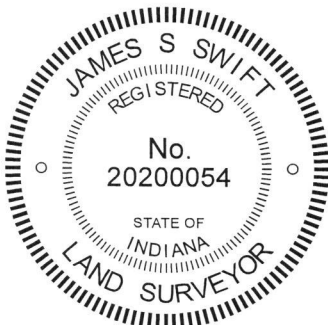
The Harrison Monument was set in accordance with local evidence.

A BCS record dated March, 1838 states, with respect to this corner, "Set Rock 11x18." Another BCS record, dated May 9, 12, 13, 1899, describes the corner as "Reestablished from Oak witness. Found scar on stump. Also ran and measured line for satisfaction. Set rock under marked +. Set rock on top with notch in top."

No recent tie cards were found referencing this corner. No surveys were found recorded in the Boone County Recorder's Office which reference this corner, nor are any artificial monuments known to mark the corner. No metal monuments were found with a magnetic locator in the immediate vicinity of the corner. A rebar with a metal cap stamped 'Carl Anderson ENGR' was found adjacent to the north edge of an ancient corner post immediately south of the road.

The position of the corner was determined with respect to local evidence in the form of the east-west roadway and an ancient fence to the south. The specific position of the corner was established in the center of the physical roadway of County Road 250 North at the prolongation of a line from the section corner approximately one-half mile to the south (see corner NW 200-300) through a wood post which marks the northerly terminus of an ancient fence. Said post is near the south edge of county road and is witnessed by the aforementioned rebar. This position for the corner works well with the relative positions of proximate corners. The monument was set on July 17, 2018. No excavation was performed at this corner beyond the minor excavation necessary to set the monument due to the fact that the corner falls in an area of substantial fill and the possibility of finding ancient evidence is minimal.

This corner was originally established as a wood post in 1822.

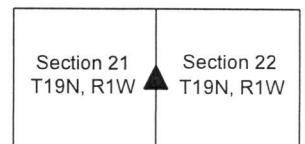


Kenneth E. Hedge
Kenneth E. Hedge, County Surveyor

James S. Swift
James S. Swift, IN LS 20200054

August 15, 2018

Center Township



SECTION CORNER RECORD

NW 300-300

BOONE COUNTY SURVEYOR'S OFFICE

State Plane grid coordinates NAD83 (CORS96):

North: 1761409.08 East: 3108881.80 (U.S. survey feet)

Type of monument: Harrison, 4" disk 'Section Corner'

Depth: two inches above adjacent ground

Indiana tie card references:

IN02_T19NR1W16_80 IN02_T19NR1W15_72

IN02_T19NR1W21_08 IN02_T19NR1W22_00

CORNER WITNESS DETAIL

SCALE 1" = 40'

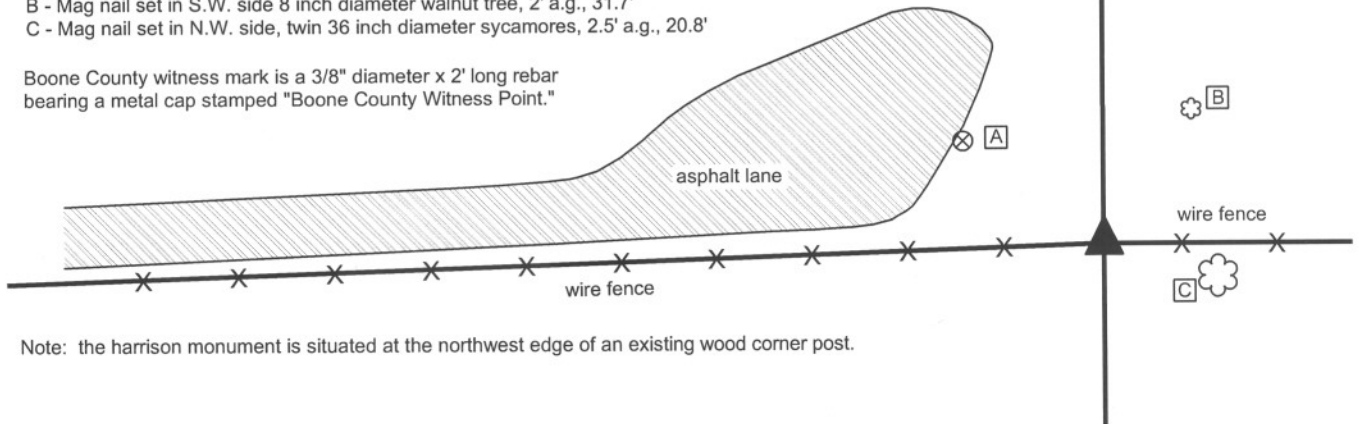


A - Boone County witness mark, flush, 37.1'

B - Mag nail set in S.W. side 8 inch diameter walnut tree, 2' a.g., 31.7'

C - Mag nail set in N.W. side, twin 36 inch diameter sycamores, 2.5' a.g., 20.8'

Boone County witness mark is a 3/8" diameter x 2' long rebar bearing a metal cap stamped "Boone County Witness Point."



Note: the harrison monument is situated at the northwest edge of an existing wood corner post.

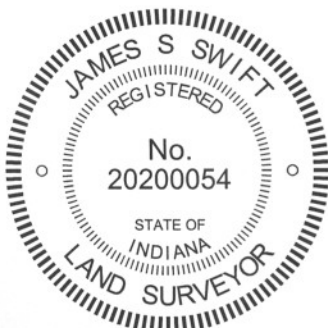
The harrison monument was set in place of a stone found.

A BCS record of May 9, 12 & 13, 1899 states "Reestablished by running line from the north and measuring from east & west for satisfaction. Found C of section 16 from line tree on line between sections 9 & 10. Found c of 16 from witness tree. Found d of 16 from witness stump and rock. Found D of 16 by running line from C (16) through c (16). Established C by running line from D (16) through d (16). Set a rock 9x8x8 in marked +."

No recent BCS tie cards were found referencing this corner.

Reconnaissance and preliminary excavation for this corner occurred on May 1, 2012 with final excavation and monumentation on May 15. Prior to excavation an old wood corner post was found with fence to the east and west and fencing cut off to the north. Wood braces were found on the east and west sides of the post. The stone described in the 1899 record was found at the northwest edge of the post, 6 inches deep. The stone appeared undisturbed and had a distinct etched "+" mark on the top. The stone was removed and found to measure 9 inches E-W by 8 inches N-S by 8 inches tall, as described in the 1899 record. A harrison monument was set in concrete in the position of the etched "+" found on the top of the stone.

This corner was originally established as a wood post in May, 1829.



Kenneth E. Hedge
 Kenneth E. Hedge, County Surveyor

James S. Swift
 James S. Swift, IN LS 20200054
 January 15, 2013

Center Township

Section 16 T19N, R1W	Section 15 T19N, R1W
Section 21 T19N, R1W	Section 22 T19N, R1W

PHOTOGRAPHIC DOCUMENTATION

Date of photography: May 1- 16, 2012

The corner prior to clearing or excavation.



The stone found at the base of the post.



The stone at the base of the post, after being exposed to the weather for two weeks.



The harrison monument set in place of the stone.



For details and documentation, refer to related sheet "Section Corner Record."

SECTION CORNER RECORD

NW 300-350

BOONE COUNTY SURVEYOR'S OFFICE

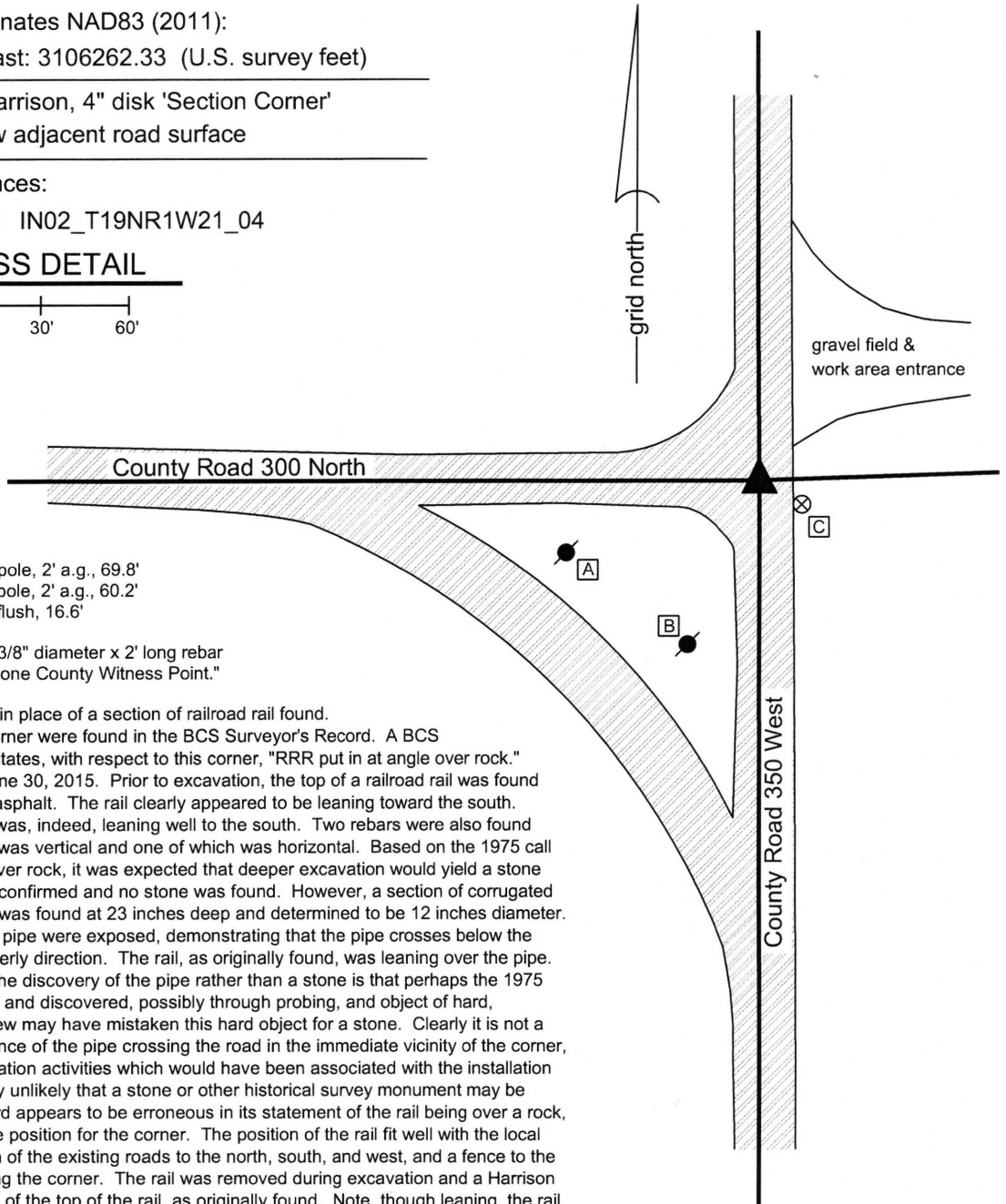
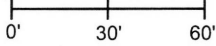
State Plane grid coordinates NAD83 (2011):
North: 1761323.10 East: 3106262.33 (U.S. survey feet)

Type of monument: Harrison, 4" disk 'Section Corner'
Depth: One inch below adjacent road surface

Indiana tie card references:
IN02_T19NR1W16_76 IN02_T19NR1W21_04

CORNER WITNESS DETAIL

SCALE 1" = 60'

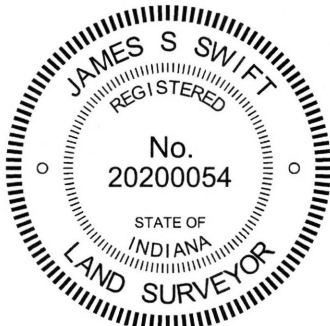


- A - Mag nail set in N. side power pole, 2' a.g., 69.8'
- B - Mag nail set in E. side power pole, 2' a.g., 60.2'
- C - Boone County witness mark, flush, 16.6'

Boone County witness mark is a 3/8" diameter x 2' long rebar bearing a metal cap stamped "Boone County Witness Point."

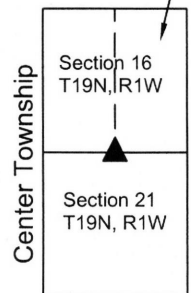
The Harrison monument was set in place of a section of railroad rail found. No specific descriptions of this corner were found in the BCS Surveyor's Record. A BCS tie card dated September, 1975 states, with respect to this corner, "RRR put in at angle over rock." This corner was excavated on June 30, 2015. Prior to excavation, the top of a railroad rail was found at 8 inches deep in a hole in the asphalt. The rail clearly appeared to be leaning toward the south. Excavation revealed that the rail was, indeed, leaning well to the south. Two rebars were also found adjacent to the rail, one of which was vertical and one of which was horizontal. Based on the 1975 call for the rail being put in at angle over rock, it was expected that deeper excavation would yield a stone found. This expectation was not confirmed and no stone was found. However, a section of corrugated metal pipe was found. The pipe was found at 23 inches deep and determined to be 12 inches diameter. Approximately 2 linear feet of the pipe were exposed, demonstrating that the pipe crosses below the road in a southeasterly-northwesterly direction. The rail, as originally found, was leaning over the pipe. The only explanation offered for the discovery of the pipe rather than a stone is that perhaps the 1975 crew performed minor excavation and discovered, possibly through probing, and object of hard, unyielding material. The 1975 crew may have mistaken this hard object for a stone. Clearly it is not a stone. However, given the presence of the pipe crossing the road in the immediate vicinity of the corner, and in consideration of the excavation activities which would have been associated with the installation of the pipe, it is considered highly unlikely that a stone or other historical survey monument may be found. Even though the 1975 card appears to be erroneous in its statement of the rail being over a rock, the rail was found at a reasonable position for the corner. The position of the rail fit well with the local evidence of the corner in the form of the existing roads to the north, south, and west, and a fence to the east. The rail was held as marking the corner. The rail was removed during excavation and a Harrison monument was set in the position of the top of the rail, as originally found. Note, though leaning, the rail is not considered to have been disturbed given the reference to it being installed at "an angle." This corner was originally established as a wood post in 1829.

East 1/2 of Section 16
Washington Township



Kenneth E. Hedge
Kenneth E. Hedge, County Surveyor

James S. Swift
James S. Swift, IN LS 20200054
March 24, 2016



SECTION CORNER RECORD

NW 300-400

BOONE COUNTY SURVEYOR'S OFFICE

State Plane grid coordinates NAD83 (2011):

North: 1761322.07 East: 3103613.54 (U.S. survey feet)

Type of monument: Harrison, 4" disk 'Section Corner'

Depth: One inch below adjacent road surface

Indiana tie card references:

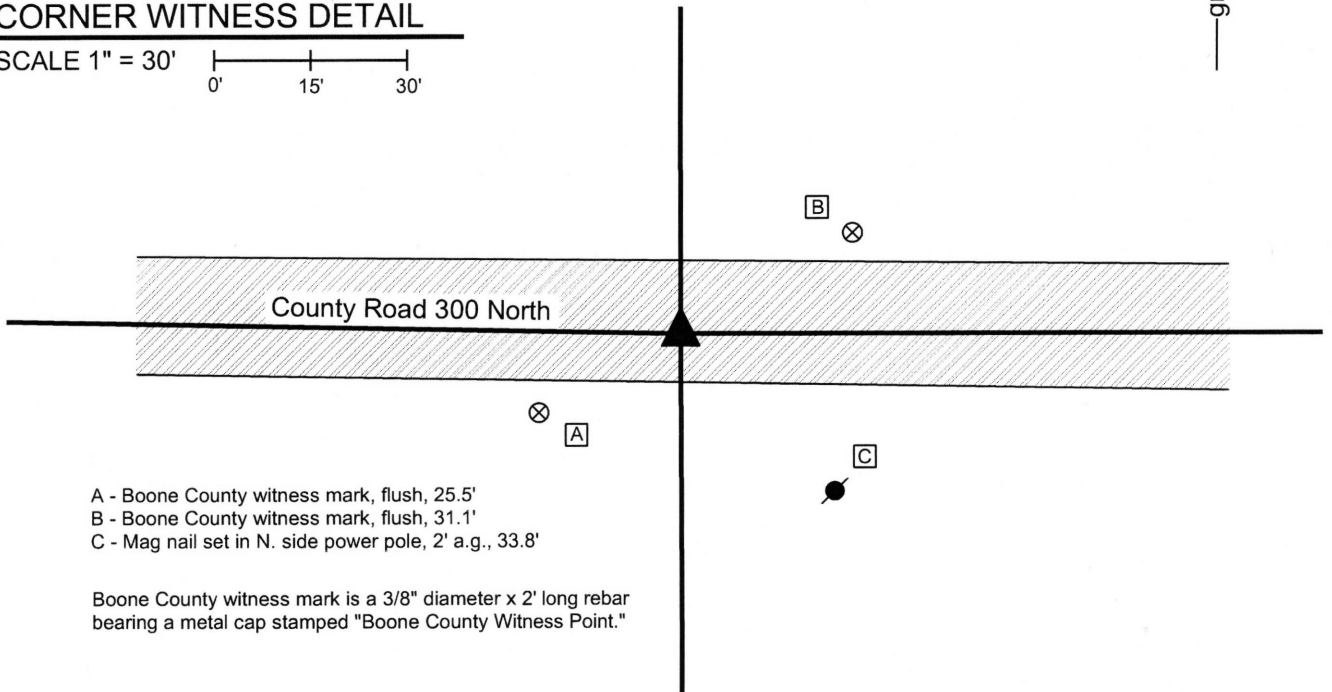
IN02_T19NR1W17_80 IN02_T19NR1W16_72

IN02_T19NR1W20_08 IN02_T19NR1W21_00



CORNER WITNESS DETAIL

SCALE 1" = 30'



- A - Boone County witness mark, flush, 25.5'
- B - Boone County witness mark, flush, 31.1'
- C - Mag nail set in N. side power pole, 2' a.g., 33.8'

Boone County witness mark is a 3/8" diameter x 2' long rebar bearing a metal cap stamped "Boone County Witness Point."

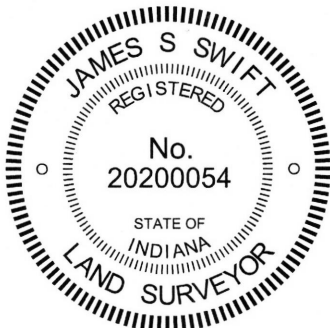
The Harrison monument was set over a vertical section of railroad rail found.

A BCS record of April 8, 1878 states, with respect to this corner, "Set Rock." A BCS tie card dated June 3, 1971 states "Stone located. Replaced stone with RRR."

This corner was excavated on July 2, 2015. Prior to excavation, a railroad spike was found at 3 inches deep in a hole in the asphalt roadway.

Excavation revealed a vertical section of railroad rail found at 13 inches deep. The rail was found to be 0.4 foot west and 0.1 foot north of the railroad spike. Substantial further excavation was not performed, given the statement on the 1971 tie card that the found stone was replaced with a railroad rail. The rail was left in place. The top of the rail was encased in concrete and a Harrison monument was set directly over the rail.

This corner was originally established as a wood post in 1819.



Kenneth E. Hedge, County Surveyor

James S. Swift, IN LS 20200054
March 24, 2016

Washington Township

Section 17 T19N, R1W	Section 16 T19N, R1W
Section 20 T19N, R1W	Section 21 T19N, R1W

Jefferson
Township

Center
Township