

SECTION CORNER RECORD

SW 300-300

BOONE COUNTY SURVEYOR'S OFFICE

State Plane grid coordinates NAD83 (2011):

North: 1729546.06 East: 3109001.84 (U.S. survey feet)

Type of monument: Harrison, 4" disk 'Section Corner'

Depth: Four inches above adjacent grade

Indiana tie card references:

IN02_T18NR1W16_80 IN02_T18NR1W15_72

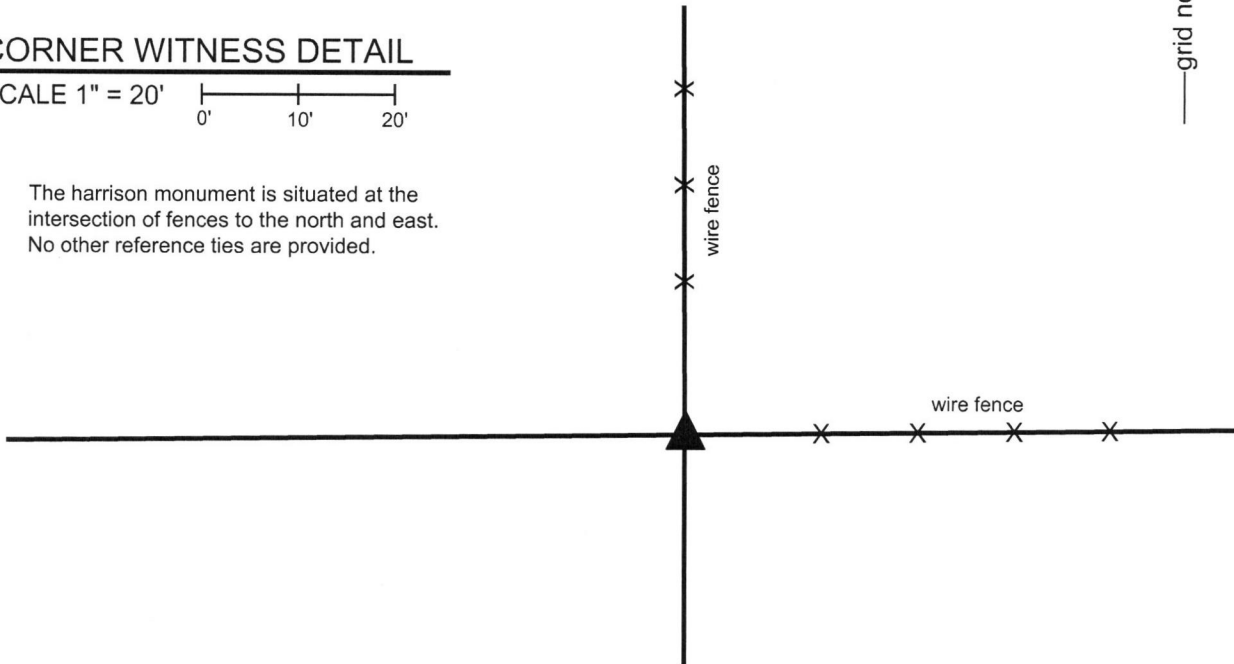
IN02_T18NR1W21_08 IN02_T18NR1W22_00



CORNER WITNESS DETAIL

SCALE 1" = 20'

The Harrison monument is situated at the intersection of fences to the north and east. No other reference ties are provided.



The Harrison monument was set in place of a wood corner post found.

No specific descriptions of this corner were found in the BCS Surveyor's Record nor were any recent BCS tie cards found referencing this corner.

Substantial local evidence of the corner was found in September, 2016 in the form of an ancient wood corner post at the intersection of old, well established fences to the north and east. The position of the post fits well with respect to the relative positions of proximate corners. Manual excavation around the base of the post on September 29, 2016 yielded numerous rocks found, none of which appeared to have been set for the specific purpose of marking the corner. A rock to the south of the post was found on the surface of the ground in a horizontal position. A rock to the west of the post was found to have a distinct high point but the remainder of the rock was found to be quite massive with almost all of the rock buried. Neither of these rocks, nor any of the smaller rocks found in this vicinity, could be positively identified as marking the corner. The post was held as the best evidence of the original location of the corner. The post was removed during excavation and a Harrison monument was set in place of the post. The monument is anchored to the large rock to the west. The rock to the south was positioned such that it would provide protection for the monument from agricultural machinery working near the corner.

This corner was originally established as a wood post in 1820.

Kenneth E. Hedge, County Surveyor

James S. Swift, IN LS 20200054
March 23, 2017



Jefferson Township

Jackson Township

Marion Township

Section 16 T18N, R1W	Section 15 T18N, R1W
Section 21 T18N, R1W	Section 22 T18N, R1W

PHOTOGRAPHIC DOCUMENTATION

Date of photography: 9/27/2016-10/3/2016

The corner prior to excavation.
View of the leaning corner post from the south.



The post removed from the ground and the hole where the post previously stood.



A vertical section of storm pipe, to be filled with concrete to support the Harrison monument.



The final monument, viewed from the south.



For details and documentation, refer to related sheet "Section Corner Record."

SECTION CORNER RECORD

SW 300-350

BOONE COUNTY SURVEYOR'S OFFICE

State Plane grid coordinates NAD83 (2011):

North: 1729514.96 East: 3106323.28 (U.S. survey feet)

Type of monument: Harrison, 4" disk 'Section Corner'

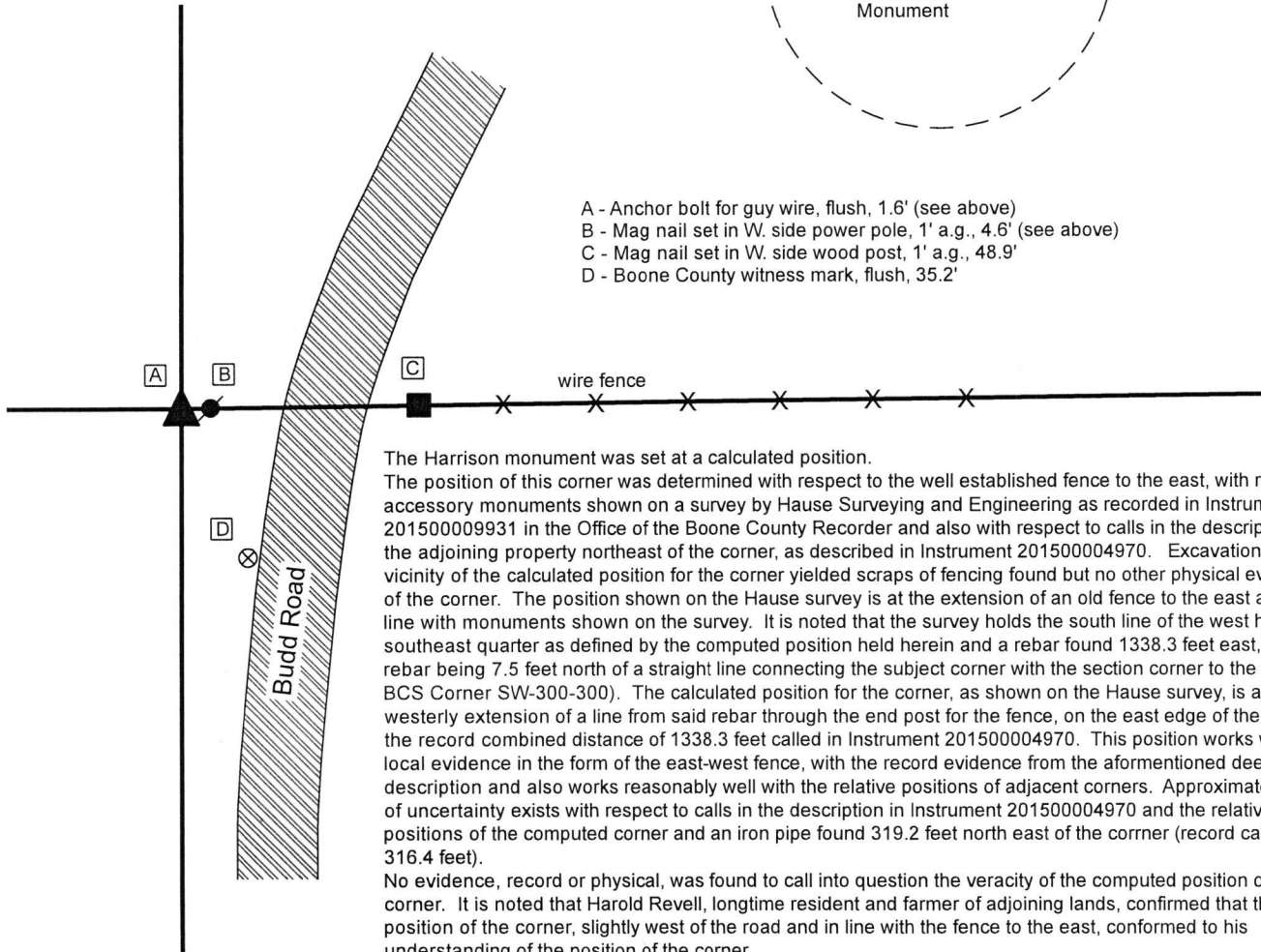
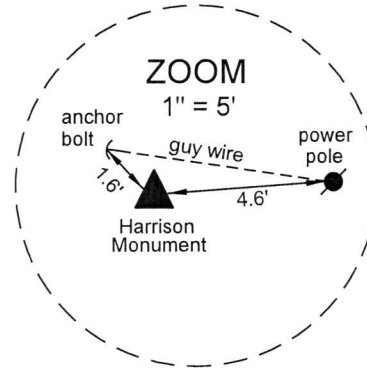
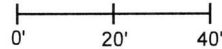
Depth: Flush with adjacent ground

Indiana tie card references:

IN02_T16NR1W16_76 IN02_TN18R1W21_04

CORNER WITNESS DETAIL

SCALE 1" = 40'

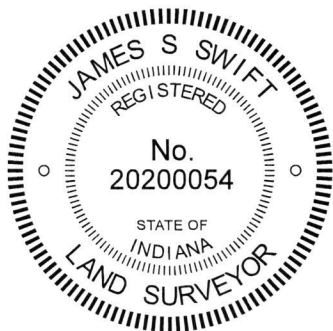


- A - Anchor bolt for guy wire, flush, 1.6' (see above)
- B - Mag nail set in W. side power pole, 1' a.g., 4.6' (see above)
- C - Mag nail set in W. side wood post, 1' a.g., 48.9'
- D - Boone County witness mark, flush, 35.2'

The Harrison monument was set at a calculated position. The position of this corner was determined with respect to the well established fence to the east, with respect to accessory monuments shown on a survey by Hause Surveying and Engineering as recorded in Instrument 201500009931 in the Office of the Boone County Recorder and also with respect to calls in the description for the adjoining property northeast of the corner, as described in Instrument 201500004970. Excavation in the vicinity of the calculated position for the corner yielded scraps of fencing found but no other physical evidence of the corner. The position shown on the Hause survey is at the extension of an old fence to the east and in line with monuments shown on the survey. It is noted that the survey holds the south line of the west half of the southeast quarter as defined by the computed position held herein and a rebar found 1338.3 feet east, said rebar being 7.5 feet north of a straight line connecting the subject corner with the section corner to the east (see BCS Corner SW-300-300). The calculated position for the corner, as shown on the Hause survey, is at the westerly extension of a line from said rebar through the end post for the fence, on the east edge of the road, at the record combined distance of 1338.3 feet called in Instrument 201500004970. This position works with the local evidence in the form of the east-west fence, with the record evidence from the aforementioned deed description and also works reasonably well with the relative positions of adjacent corners. Approximately 3 feet of uncertainty exists with respect to calls in the description in Instrument 201500004970 and the relative positions of the computed corner and an iron pipe found 319.2 feet north east of the corner (record call of 316.4 feet).

No evidence, record or physical, was found to call into question the veracity of the computed position of the corner. It is noted that Harold Revell, longtime resident and farmer of adjoining lands, confirmed that the position of the corner, slightly west of the road and in line with the fence to the east, conformed to his understanding of the position of the corner.

This corner was originally established as a wood post in 1821.



Kenneth E. Hedge
 Kenneth E. Hedge, County Surveyor

James S. Swift
 James S. Swift, IN LS 20200054

March 6, 2019

Center Township

Section 16
T18N, R1W

▲
 Section 21
 T18N, R1W

SECTION CORNER RECORD

SW 300-400

BOONE COUNTY SURVEYOR'S OFFICE

State Plane grid coordinates NAD83 (2011):

North: 1729483.13 East: 3103662.15 (U.S. survey feet)

Type of monument: 5/8" diameter rebar with aluminum cap stamped 'Boone County Surveyor', 14" below grade

Indiana tie card references:

IN02_T18NR1W16_72 IN02_T18NR1W17_80

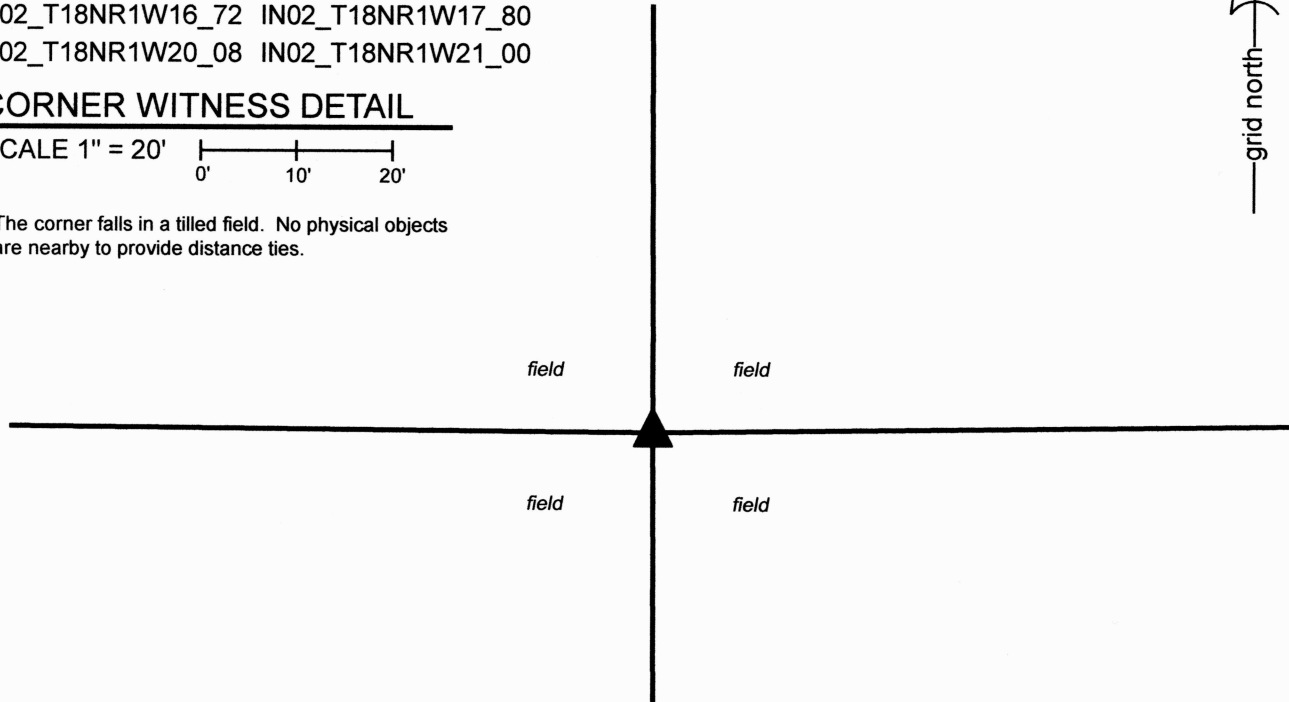
IN02_T18NR1W20_08 IN02_T18NR1W21_00



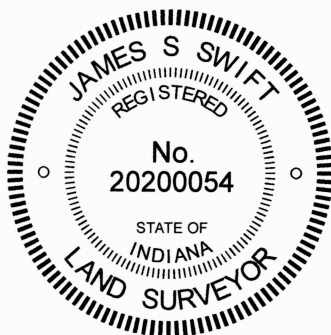
CORNER WITNESS DETAIL

SCALE 1" = 20'

The corner falls in a tilled field. No physical objects are nearby to provide distance ties.

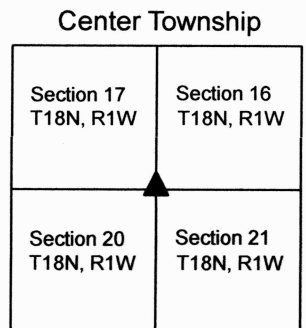


The rebar with Boone County Surveyor cap was set at a calculated position. No specific descriptions of this corner were found in the BCS Surveyor's Record beyond the original establishment of the corner as a wood post in 1820. However, the corner is referenced as the terminal point for measurements in the records for both Sections 17 and 20, which show dimensions to the corner from other corners to the west. The distance references for Section 17 are from 1872 and the distance references for Section 20 are from 1883. Though these records show slightly different actual dimensions by 3 links, they both show that the western portion of the line connecting the subject corner with the corner to the west (see BCS Corner SW 300-450) is 4 links longer than the eastern portion. No specific evidence of the subject corner is visible, as this corner falls amidst a continuous tilled field, but County Road 425 West provides clear evidence of the half-quarter section lines, approximately one quarter mile to the west. Given the lack of evidence in the immediate vicinity of the corner, a computed position was arrived at by extending the line from the southwest corner of Section 17 (BCS Corner SW 300-500) through the south quarter corner of Section 17 (BCS Corner SW 300-450) at a distance which is proportional to the distances shown on the 1872 and 1883 records, based on the distance between the south quarter corner of Section 17 and the center of County Road 425 West. It was observed that this position fell less than one foot south of a line projected west from the southeast corner of Section 16 (BCS Corner SW 300-300) through the south quarter corner of that section (BCS Corner SW 300-350) and worked reasonably well with the east-west distances in Section 16. Given the detail of the records in Section 17 and 20, we established the position of the corner per the corners between those sections, along with the relative distances shown on those records, with respect to the center of County Road 425 west. A railroad rail called for in a BCS tie card of 1968 was not found, hence was not used in computation of the corner. As the corner falls in a tilled field, a rebar was buried at 14 inches deep to avoid being disturbed by agricultural practices. The rebar was set on October 30, 2024. This corner was originally established as a wood post in 1820.



Carol Cunningham, County Surveyor

James S. Swift, IN LS 20200054
November 13, 2024



SECTION CORNER RECORD

SW 350-300

BOONE COUNTY SURVEYOR'S OFFICE

State Plane grid coordinates NAD83 (2011):
North: 1726897.45 East: 3109000.90 (U.S. survey feet)

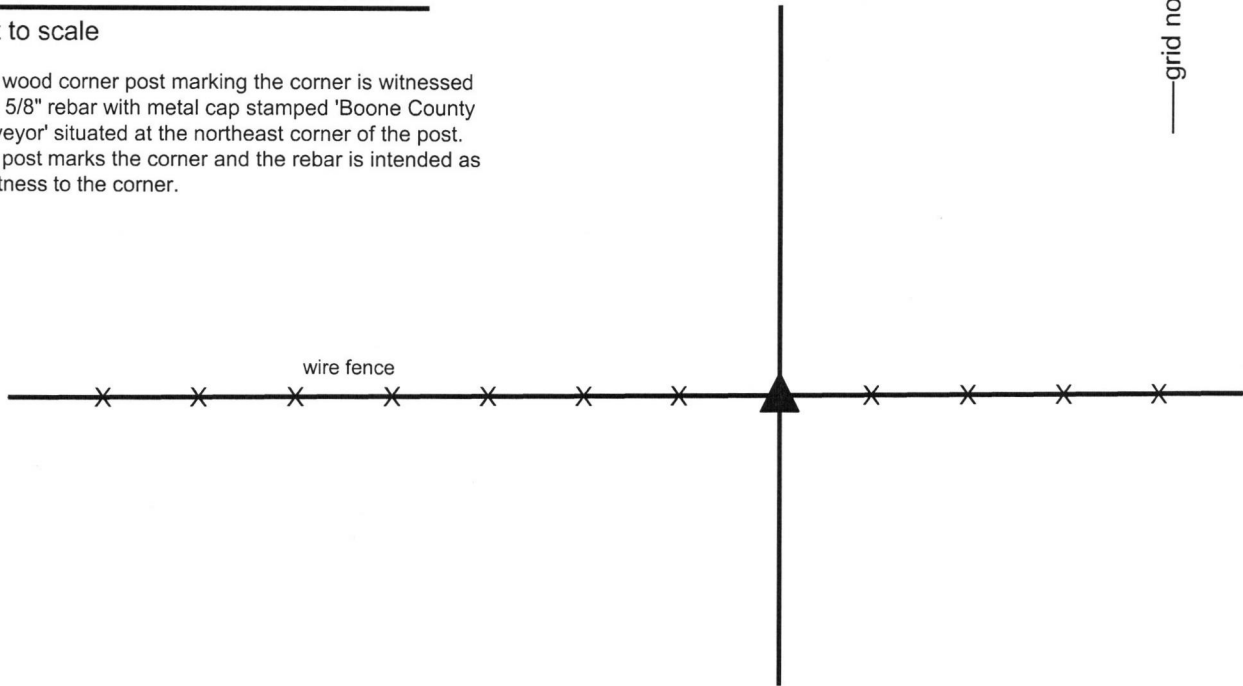
Type of monument: wood corner post

Indiana tie card references:
IN02_T20NR2E15_80 IN02_T20NR2E14_72

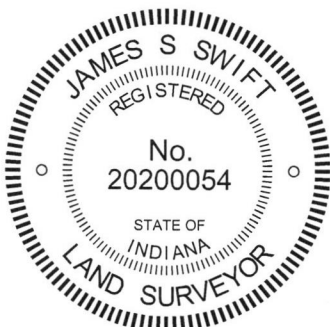
CORNER WITNESS DETAIL

Not to scale


The wood corner post marking the corner is witnessed by a 5/8" rebar with metal cap stamped 'Boone County Surveyor' situated at the northeast corner of the post. The post marks the corner and the rebar is intended as a witness to the corner.



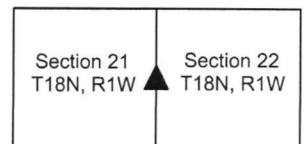
The wood corner post was found in place.
No specific descriptions of this corner were found in the BCS Surveyor's Record nor were any recent BCS tie cards found referencing this corner. The wood corner post is situated at the intersection of established fences to the east and west and a former fence to the north, as evidenced by fencing attached to the post but clipped off. The position of the post fits well with the relative positions of proximate corners. Minor excavation and probing on October 5, 2016 yielded no rocks found around the post. The post was accepted as the best available evidence of the corner and held as marking the corner. A 36 inch length of 5/8 inch rebar with a metal cap stamped "Boone County Surveyor" was set adjacent to the post on the northeast side. The post represents the corner and the rebar is set as a witness monument. The specific position of the post held as marking the corner is 0.6 foot west and 0.7 foot south of the rebar.
This corner was originally established as a wood post in 1820.




Kenneth E. Hedge, County Surveyor


James S. Swift, IN LS 20200054
March 23, 2017

Harrison Township



SECTION CORNER RECORD

SW 400-400

BOONE COUNTY SURVEYOR'S OFFICE

State Plane grid coordinates NAD83 (2011):

North: 1724229.66 East: 3103688.18 (U.S. survey feet)

Type of monument: Harrison, 4" disk 'Section Corner'

Depth: Six inches below adjacent gravel road surface

Indiana tie card references:

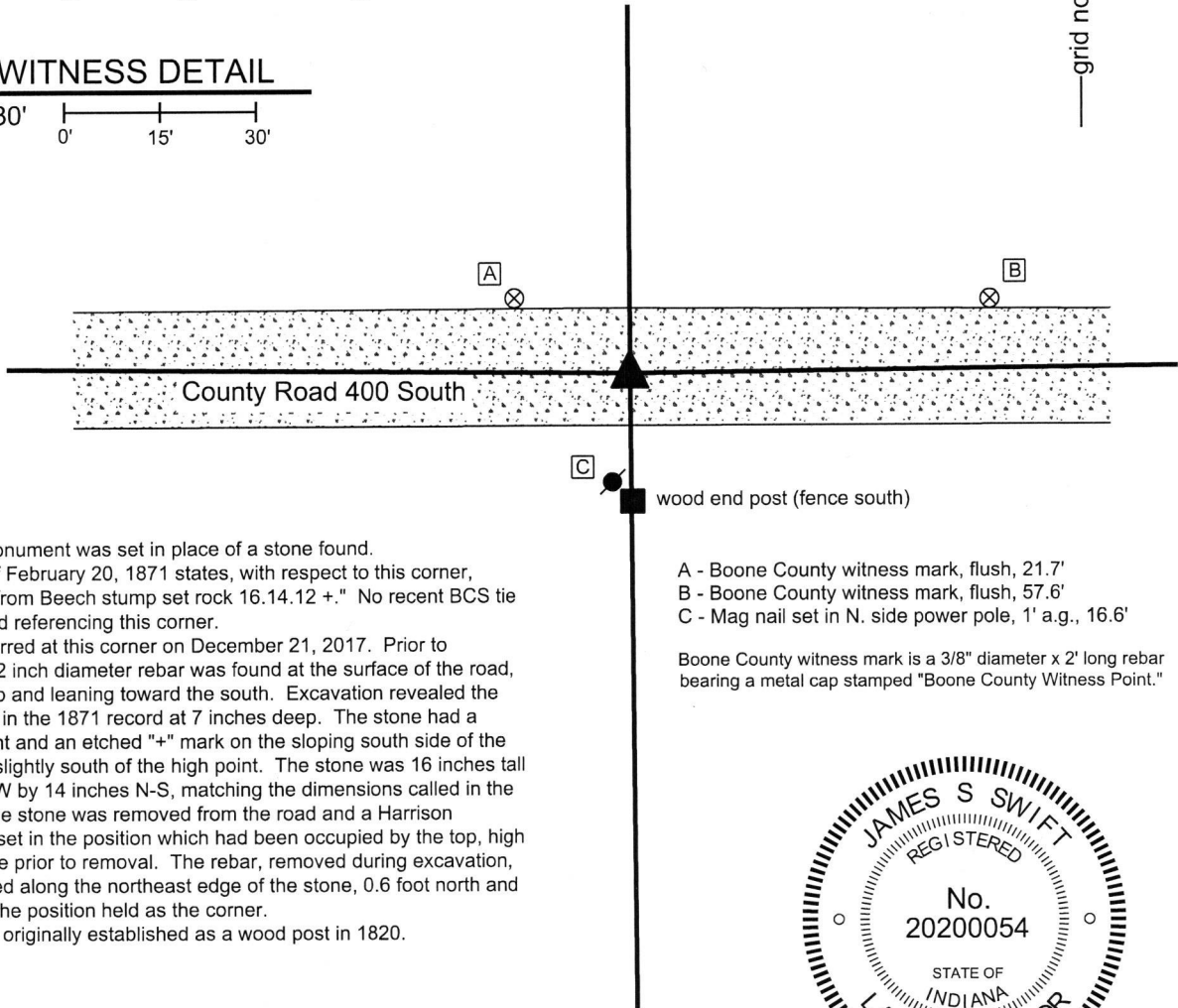
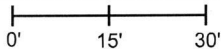
IN02_T18NR1W20_80 IN02_T18NR1W21_72

IN02_T18NR1W29_08 IN02_T18NR1W28_00



CORNER WITNESS DETAIL

SCALE 1" = 30'



The Harrison monument was set in place of a stone found.

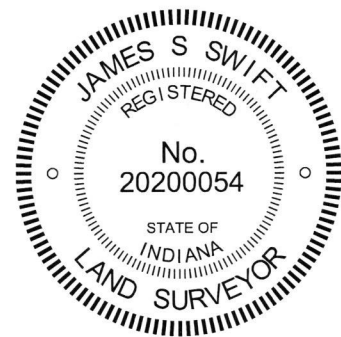
A BCS record of February 20, 1871 states, with respect to this corner, "Reestablished from Beech stump set rock 16.14.12 +." No recent BCS tie cards were found referencing this corner.

Excavation occurred at this corner on December 21, 2017. Prior to excavation, a 1/2 inch diameter rebar was found at the surface of the road, bent near the top and leaning toward the south. Excavation revealed the stone described in the 1871 record at 7 inches deep. The stone had a distinct high point and an etched "+" mark on the sloping south side of the top of the rock, slightly south of the high point. The stone was 16 inches tall by 12 inches E-W by 14 inches N-S, matching the dimensions called in the 1871 record. The stone was removed from the road and a Harrison monument was set in the position which had been occupied by the top, high point of the stone prior to removal. The rebar, removed during excavation, had been situated along the northeast edge of the stone, 0.6 foot north and 0.3 foot east of the position held as the corner.

This corner was originally established as a wood post in 1820.

- A - Boone County witness mark, flush, 21.7'
- B - Boone County witness mark, flush, 57.6'
- C - Mag nail set in N. side power pole, 1' a.g., 16.6'

Boone County witness mark is a 3/8" diameter x 2' long rebar bearing a metal cap stamped "Boone County Witness Point."



Kenneth E. Hedge
Kenneth E. Hedge, County Surveyor

James S. Swift
James S. Swift, IN LS 20200054

February 6, 2018

