

SECTION CORNER RECORD

NE 800-100

BOONE COUNTY SURVEYOR'S OFFICE

State Plane grid coordinates NAD83 (2011):

North: 1787880.69 East: 3129649.47 (U.S. survey feet)

Type of monument: Harrison, 4" disk 'Section Corner'

Depth: Two inches above surrounding ground

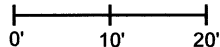
Indiana tie card references:

IN02_T20NR1E19_80 IN02_T20NR1E20_72

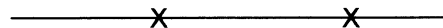
IN02_T20NR1E30_08 IN02_T20NR1E29_00

CORNER WITNESS DETAIL

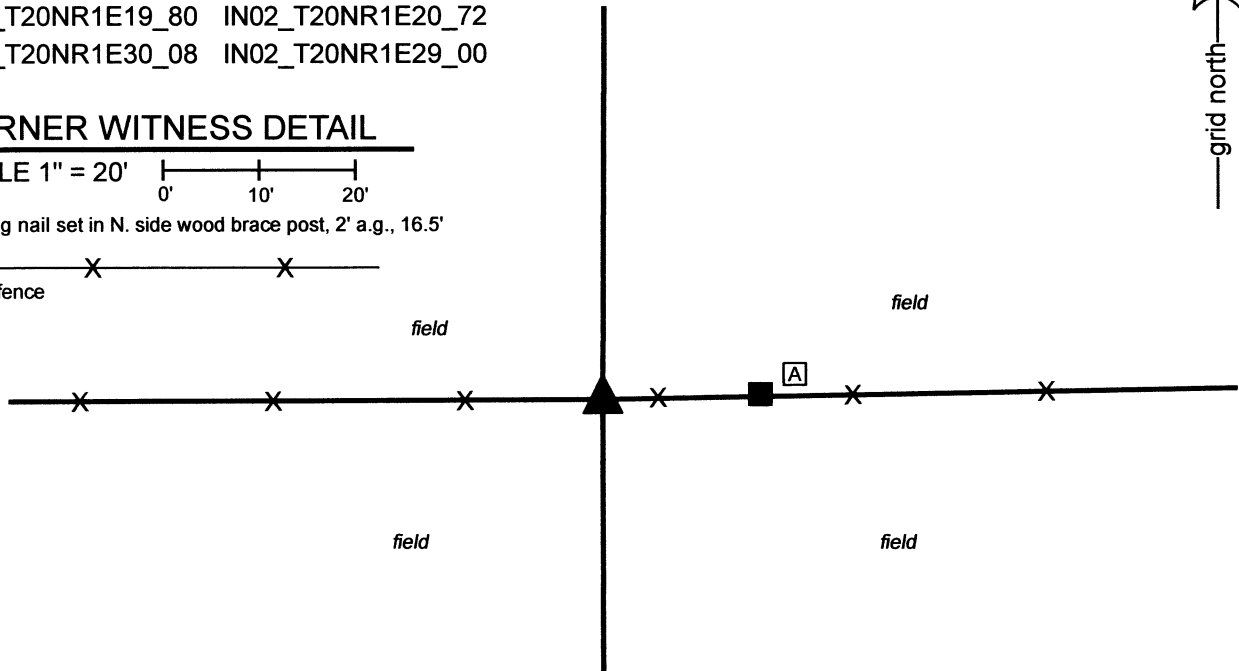
SCALE 1" = 20'



A - Mag nail set in N. side wood brace post, 2' a.g., 16.5'



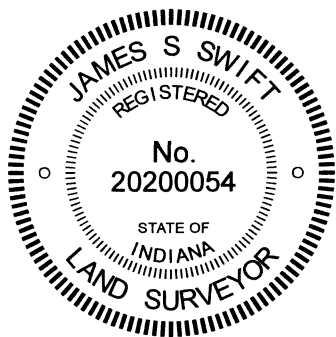
- wire fence



The Harrison monument was set 1 rod (16.5 feet) west of a wood brace post.

No specific descriptions of this corner were found in the BCS Surveyor's Record beyond the original establishment of the corner as a wood post in 1822.

No recent tie cards were found referencing this corner, nor were any references to this corner found in surveys recorded in the Office of the Boone County Recorder. Several surveys by Jerry L. Carter, LS No. S0350, were found which hold a post at the southwest corner of the east half of the southwest quarter of Section 20 (see Survey Book 12, pages 67, 69, 70, Boone County Recorder). The subject corner is referenced in the deeds for the Bowman properties to the south, southeast and southwest (see Deed Record 235, page 593 and Instrument 9904593). An overall description in Instrument 9904593 specifically calls the corner as being 590.88 feet east of the northwest corner of the Bowman property. No specific post, stone, or other monument was found marking the subject corner during reconnaissance on several occasions. However, it was observed that a standing wood brace post is precisely 16.5 feet (1 rod) plus the deed distance of 590.88 feet east of an ancient wood corner post providing the visible evidence of the northwest corner of the Bowman property. It was also observed that holding a computed position for the subject corner which is 1 rod west of the brace post, the wood post referenced on the Carter surveys as marking the southwest corner of the east half of the southwest quarter of Section 20 falls within 2 feet total (1.5 feet east-west) of the midpoint of a straight line connecting the computed position with the southeast corner of said southwest quarter of Section 20. Hence, a position 1 rod west of the brace post works precisely with the deed distance and post at the northwest corner of the Bowman property and works quite well with the post held by Carter at the sixteenth corner to the east. It is noted that brace posts have been observed to be situated at 1 rod from corner posts at numerous other corners throughout the county. Manual excavation and probing in the vicinity of the brace post and computed position on April 4th and 12th, 2023 did not reveal further evidence of the corner. The corner was established in the east-west fence line, in-line with and 16.5 feet west of the brace post to the east. A Harrison monument was set at this position on April 12, 2023.



Carol Cunningham
Carol Cunningham, County Surveyor

James S. Swift
James S. Swift, IN LS 20200054
April 26, 2023

Clinton Township

Section 19 T20N, R1E	Section 20 T20N, R1E
Section 30 T20N, R1E	Section 29 T20N, R1E

SECTION CORNER RECORD

NE 800-150

BOONE COUNTY SURVEYOR'S OFFICE

State Plane grid coordinates NAD83 (2011):

North: 1787919.85 East: 3132243.02 (U.S. survey feet)

Type of monument: Harrison, 4" disk 'Section Corner'

Depth: Three inches above adjacent ground

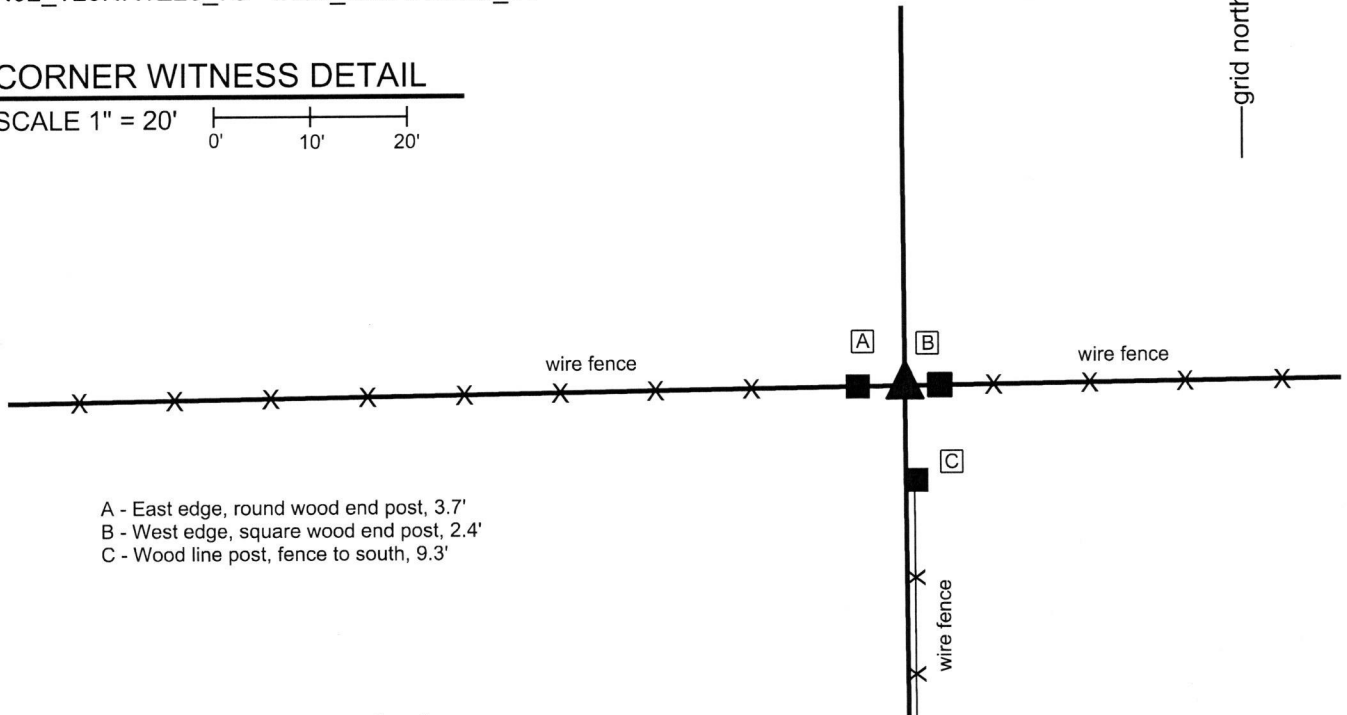
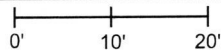
Indiana tie card references:

IN02_T20NR1E20_76 IN02_T20NR1E29_04



CORNER WITNESS DETAIL

SCALE 1" = 20'



- A - East edge, round wood end post, 3.7'
- B - West edge, square wood end post, 2.4'
- C - Wood line post, fence to south, 9.3'

The Harrison Monument was set over a stone found.

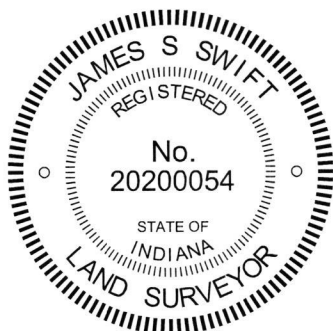
A BCS record of March 21-22, 1867 states, with respect to this corner, "Reestablished. Set two rocks. One 6.5.4 marked +. Top Rock 21.12.10 mark + on side and mark on top." No recent BCS tie cards were found referencing this corner.

Excavation was performed at this corner on March 21, 2018. Prior to excavation, several posts were found in near proximity to each other, including a round wood post acting as the end post for fencing to the west, a square wood post acting as the end post for fencing to the east and another post to the south which appears to be a line post for north-south fencing, on the ground to the north and standing to the south. The post which appears to be the end post for the fencing to the south is on the ground. The three standing posts are shown on the diagram. Excavation in the vicinity of the posts revealed several rocks found. A rock found at 30 inches deep is believed to be the 21.12.10 stone described in the 1867 record. Due to the depth of the stone and the presence of water in the soil, only the top of the rock was exposed. Measuring the exposed portion of the stone together with the use of a probe, it appears that the stone is 12 inches N-S by 21 inches E-W. The stone does not appear to be vertical and appears to be leaning toward the west. It is most likely that the stone was originally set in a vertical orientation, but has been displaced and leaned to the west. No specific marks were observed on the part of the stone exposed. The lower stone was not found. Being much smaller than the upper stone, it may be present below but was not found with a probe. It is noted that the west edge of the stone, likely the top of the stone as originally set, is under a stump and was not fully exposed.

The stone is in-line with the posts and fences to the east and west and is approximately one foot west of the fence to the south. Though the end post for the fence to the south is on the ground, it appears that the found stone is at the northwest edge of the original position of this post.

The stone was accepted as marking the corner and a Harrison monument was set over the main body of the stone, as found.

This corner was originally established as a wood post in 1822.



Kenneth E. Hedge
Kenneth E. Hedge, County Surveyor

James S. Swift
James S. Swift, IN LS 20200054

April 3, 2018

Clinton Township

Section 20
T20N, R1E

Section 29
T20N, R1E

SECTION CORNER RECORD

BOONE COUNTY SURVEYOR'S OFFICE

NE 800-200

State Plane grid coordinates NAD83 (CORS96):

North: 1787955.91 East: 3134847.05 (U.S. survey feet)

Type of monument: Harrison, 4" disk 'Section Corner'

Depth: One inch below adjacent road surface

Indiana tie card references:

IN02_T20NR1E20_80 IN02_T20NR1E21_72

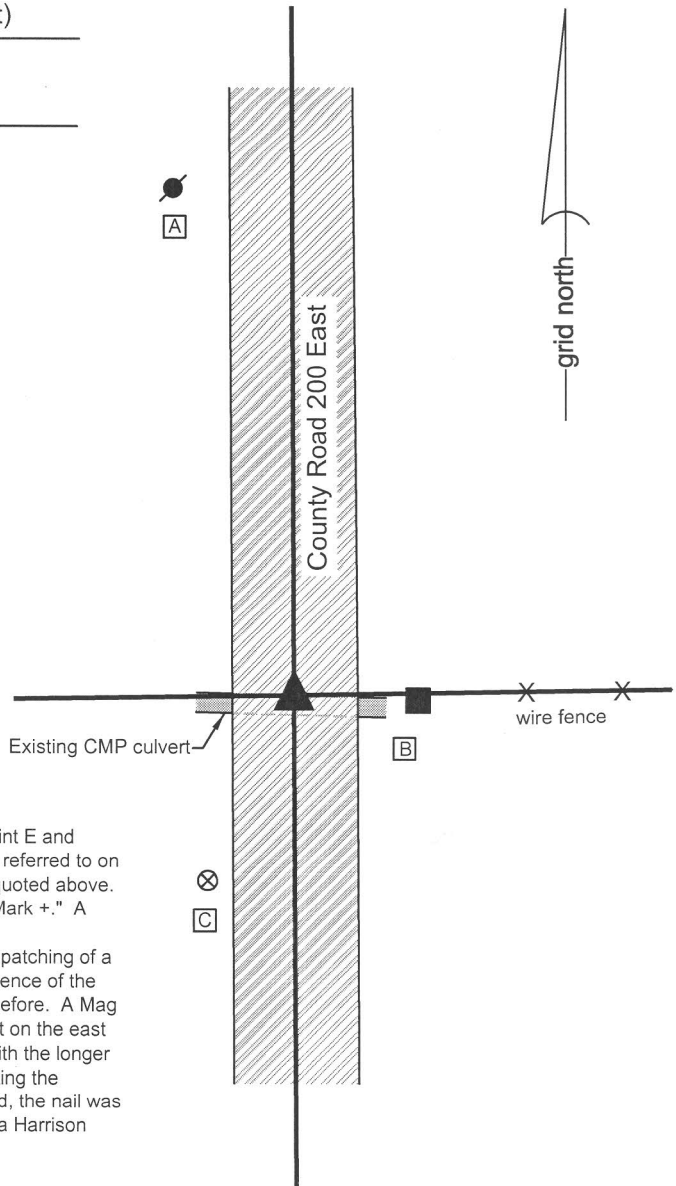
IN02_T20NR1E29_08 IN02_T20NR1E28_00

CORNER WITNESS DETAIL

SCALE 1" = 30'

- A - Mag nail set in S.E. side power pole, 3' a.g., 80.8'
- B - Mag nail set in W. side wood post, 2.5' a.g., 19.5'
- C - Boone County witness mark, flush, 32.0'

Boone County witness mark is a 3/8" diameter x 2' long rebar bearing a metal cap stamped "Boone County Witness Point."

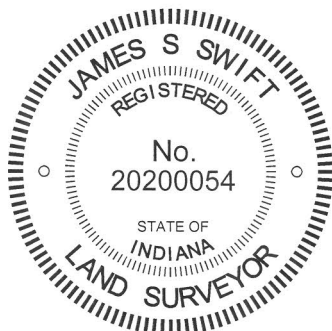


The Harrison monument was set in place of a Mag nail found.

A BCS record of May 8, 1865 states, with respect to this corner, "Found point E and drove stake." A BCS record dated March 21-22, 1867 states "Found stake referred to on page 401." The reference to page 401 is a reference to the 1865 record quoted above. A BCS record dated June 2, 1883 states "Reestablished Stone 18x14x14 Mark +." A BCS tie card dated July 9, 1975 states "No Stone Found - Set Rod."

No significant excavation was performed at this corner, as it falls within the patching of a recently installed corrugated steel culvert pipe. It is believed that any evidence of the corner would have been obliterated by the installation of the culvert, if not before. A Mag nail found in the center of the road fit reasonably well with the tie to the post on the east side of the road. The nail is slightly north of the post but generally in line with the longer fence bearing east from the post. The Mag nail was accepted as representing the position of the rod set in 1975. With no contrary evidence likely to be found, the nail was accepted as marking the corner. The nail was removed and replaced with a Harrison monument set in the same position.

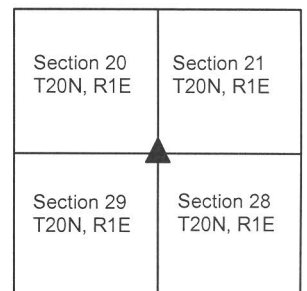
This corner was originally established as a wood post in 1822.



Kenneth E. Hedge
Kenneth E. Hedge, County Surveyor

James S. Swift
James S. Swift, IN LS 20200054
March 27, 2015

Clinton Township



SECTION CORNER RECORD

BOONE COUNTY SURVEYOR'S OFFICE

NE 850-200

State Plane grid coordinates NAD83 (CORSS96):

North: 1790584.89 East: 3134837.63 (U.S. survey feet)

Type of monument: Harrison, 4" disk 'Section Corner'

Depth: One inch below adjacent road surface

Indiana tie card references:

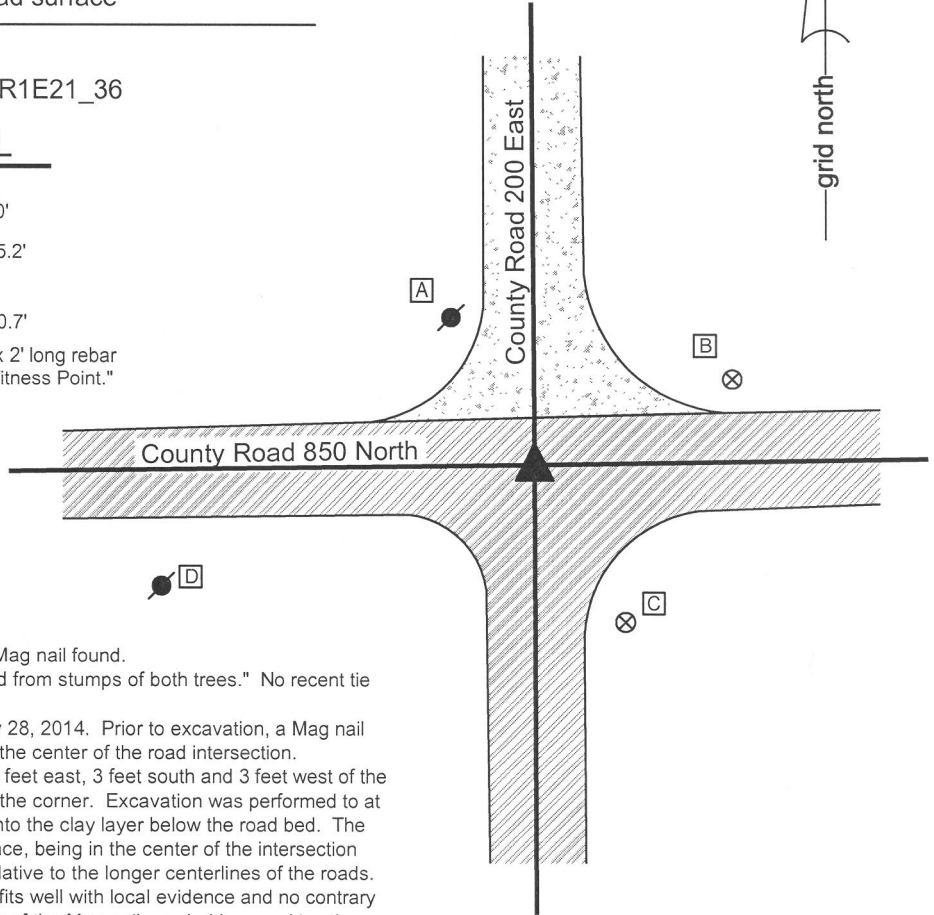
IN02_T20NR1E20_44 IN02_T20NR1E21_36

CORNER WITNESS DETAIL

SCALE 1" = 40'

- A - Mag nail set in E. side power pole, 2' a.g., 35.2'
- B - Boone County witness mark, flush, 45.2'
- C - Boone County witness mark, flush, 37.8'
- D - Mag nail set in E. side power pole, 2' a.g., 80.7'

Boone County witness mark is a 3/8" diameter x 2' long rebar bearing a metal cap stamped "Boone County Witness Point."



The Harrison monument was set in place of a Mag nail found.

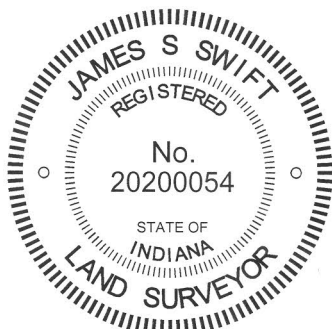
A BCS record dated May 8, 1865 states "Found from stumps of both trees." No recent tie cards were found referencing this corner.

Excavation was performed at this corner on May 28, 2014. Prior to excavation, a Mag nail was found flush with the surface of the road at the center of the road intersection.

Excavation of an area extending 2 feet north, 2 feet east, 3 feet south and 3 feet west of the Mag nail did not reveal any further evidence of the corner. Excavation was performed to at least 28 inches deep, approximately 5 inches into the clay layer below the road bed. The position of the Mag nail fit well with local evidence, being in the center of the intersection and appeared to be in a reasonable position relative to the longer centerlines of the roads.

The source of the Mag nail is not known, but it fits well with local evidence and no contrary evidence of the corner was found. The position of the Mag nail was held as marking the corner. The nail was replaced with a Harrison monument in the same position.

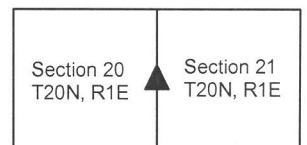
This corner was originally established as a wood post in 1822.



Kenneth E. Hedge
 Kenneth E. Hedge, County Surveyor

James S. Swift
 James S. Swift, IN LS 20200054
 March 27, 2015

Clinton Township



SECTION CORNER RECORD

NE 900-150

BOONE COUNTY SURVEYOR'S OFFICE

State Plane grid coordinates NAD83 (2011):

Corner: North: 1793181.20 East: 3132234.67 (U.S. survey feet)

Witness: North: 1793181.20 East: 3132235.55 (U.S. survey feet)

Corner monument: wood corner post

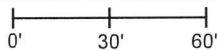
Witness monument: 5/8" diameter rebar with aluminum cap stamped 'Boone County Surveyor' 3 inches above surrounding ground

Indiana tie card references:

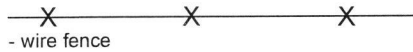
IN02_T20NR1E17_44 IN02_T20NR1E20_36

CORNER WITNESS DETAIL

SCALE 1" = 60'



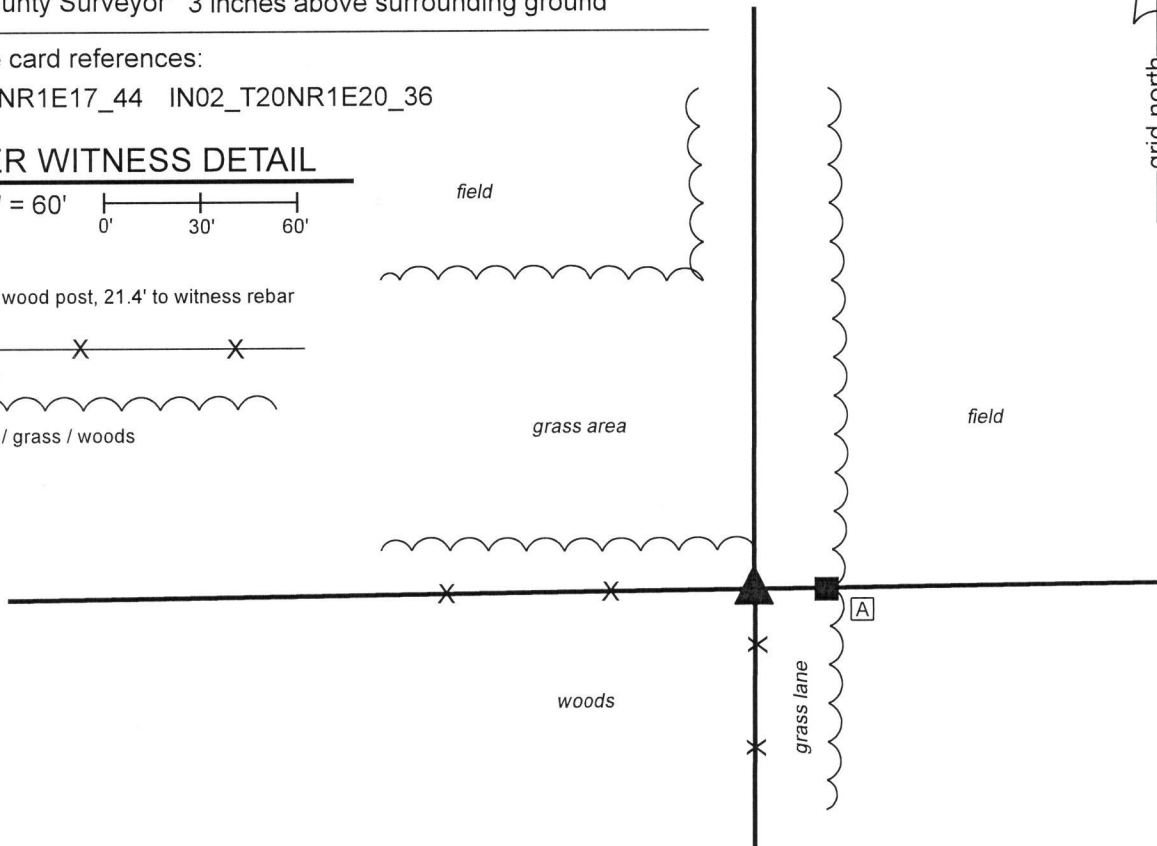
A - 8" by 8" wood post, 21.4' to witness rebar



- wire fence



- edge field / grass / woods

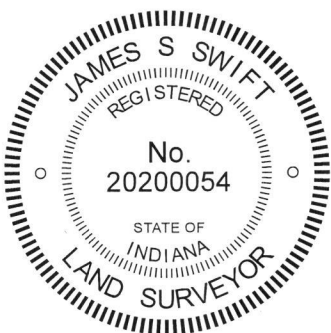


The wood corner post was found in place and held as marking the corner.

No specific descriptions of this corner were found in the BCS Surveyor's Record beyond the original establishment of the corner as a wood post in 1822. No recent BCS tie cards were found referencing the corner. A survey by Jerry L. Carter, LS No. S0350, recorded in Survey Book 12, page 67 in the Office of the Boone County Recorder shows the corner as "post (fnd) (best evidence)."

The wood corner post was found in place at the intersection of fences to the south and west, immediately west of a wood post on the east side of a grass lane. The post represents the northerly terminus of a fence which begins on the north right-of-way of County Road 850 North, in line with a railroad spike commonly held as marking the center of section 20. Excavation around the post in March, 2018 revealed no stones or other evidence of the corner. The position of the post fits well with the relative positions of proximate corners. The post was accepted as representing the best available evidence of the corner and was held as marking the corner.

On August 20, 2019, a 30 inch length of 5/8 inch diameter rebar was set adjacent to the post as a witness monument. The center of the post is held as the corner. The post is 8 inches N-S by 10 inches E-W. The rebar is 5.5 inches east of the east edge of the post and 10.5 inches east of the point held as the corner.



Kenneth E. Hedge, County Surveyor

James S. Swift, IN LS 20200054
August 28, 2019

Clinton Township

Section 17
T20N, R1E

Section 20
T20N, R1E

SECTION CORNER RECORD

BOONE COUNTY SURVEYOR'S OFFICE

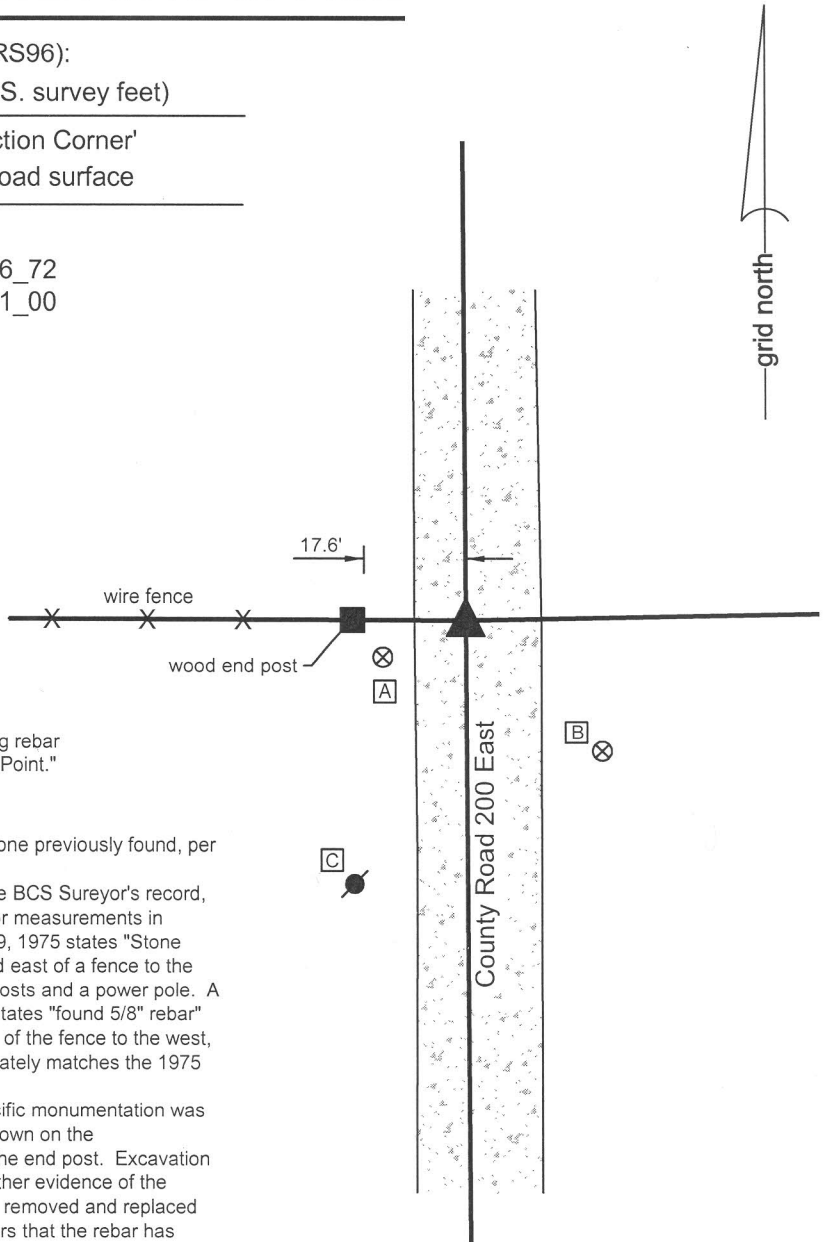
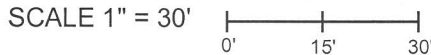
NE 900-200

State Plane grid coordinates NAD83 (CORS96):
 North: 1793212.31 East: 3134820.13 (U.S. survey feet)

Type of monument: Harrison, 4" disk 'Section Corner'
 Depth: six inches below adjacent gravel road surface

Indiana tie card references:
 IN02_T20NR1E17_80 IN02_T20NR1E16_72
 IN02_T20NR1E20_08 IN02_T20NR1E21_00

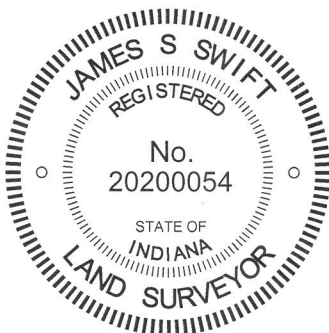
CORNER WITNESS DETAIL



- A - Boone County witness mark, flush, 14.3'
- B - Boone County witness mark, flush, 29.8'
- C - Mag nail set in E. side power pole, 2' a.g., 44.5'

Boone County witness mark is a 3/8" diameter x 2' long rebar bearing a metal cap stamped "Boone County Witness Point."

The Harrison monument was set in the position of a stone previously found, per BCS records.
 No specific descriptions of this corner were found in the BCS Sureyor's record, though the corner is mentioned as the terminal point for measurements in records of 1837 and 1894. A BCS tie card dated July 9, 1975 states "Stone Found - Set Rod" and shows the corner in line with and east of a fence to the west. The tie card shows distance ties to two corner posts and a power pole. A sketch from an unknown source dated April 27, 1977 states "found 5/8" rebar" and also shows the corner at the easterly prolongation of the fence to the west, with a tie to the end post of said fence which approximately matches the 1975 BCS tie card.
 This corner was excavated on May 23, 2014. No specific monumentation was found prior to excavation, but the fence to the west, shown on the aforementioned documents, was yet present, as was the end post. Excavation of the roadway to the east of said post revealed no further evidence of the corner. It is believed that the stone found in 1975 was removed and replaced with a rebar, or 'rod' as called on the tie card. It appears that the rebar has been subsequently removed, most likely in association with road grading activities. The position of the corner was reestablished in line with the fence to the west at 17.6 feet east of the end post on the west side of the road, per the 1975 tie card. A Harrison monument was set at this position.
 This corner was originally established as a wood post in 1822.



Kenneth E. Hedge
 Kenneth E. Hedge, County Surveyor

James S. Swift
 James S. Swift, IN LS 20200054
 March 27, 2015

Clinton Township

Section 17 T20N, R1E	Section 16 T20N, R1E
Section 20 T20N, R1E	Section 21 T20N, R1E