

SECTION CORNER RECORD

NE 200-700

BOONE COUNTY SURVEYOR'S OFFICE

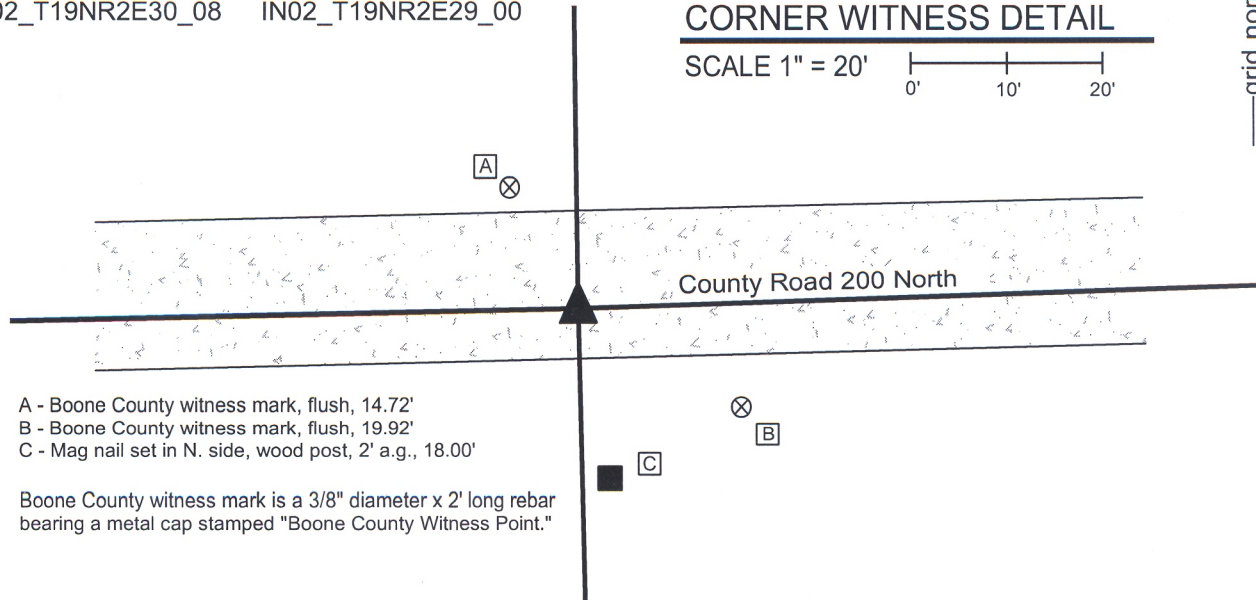
State Plane grid coordinates NAD83 (NSRS 2007):
North: 1756791.75 East: 3161700.86 (U.S. survey feet)

Type of monument: Harrison, 4" disk 'Section Corner'
Depth: Six inches below the adjacent gravel road surface.

Indiana tie card references:
IN02_T19NR2E19_76 IN02_T19NR2E20_80
IN02_T19NR2E30_08 IN02_T19NR2E29_00

CORNER WITNESS DETAIL

SCALE 1" = 20' 



- A - Boone County witness mark, flush, 14.72'
- B - Boone County witness mark, flush, 19.92'
- C - Mag nail set in N. side, wood post, 2' a.g., 18.00'

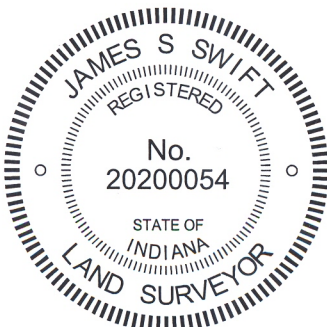
Boone County witness mark is a 3/8" diameter x 2' long rebar bearing a metal cap stamped "Boone County Witness Point."

The harrison monument was set over a stone found.

A BCS record of January 28, 1869 states "Reestablished from Ash. Set two Rocks. One 5 1/2, 5 by 4 in. marked +. Top Rock 15, 7 by 6 inch. marked + on side." A BCS tie card dated April 1970 states "No stone, set rail."

This corner was excavated on June 14, 2010. Prior to excavation a railroad rail was found 3 inches below the surface of the gravel road, leaning substantially towards the east. Excavation revealed several stones at various depths and positions. A stone which was accepted as being the record lower stone was found at 22 inches deep, 4 feet west and 0.3 feet south of the top of the rail, as originally found. This stone was 5 inches tall by 5 1/2 inches N-S by 7 inches E-W with a clearly visible "+" etched in the top center. Two of the dimensions of the stone match the record dimensions but the E-W dimension does not match the record dimension of 4 inches. Analysis of this situation yielded the conclusion that this is the stone mentioned in the 1869 record and that the variation in the one dimension is most likely to have been a notation error. The fact that the smallest dimension of the stone, as found, is the vertical dimension fits with the character of the stone as being the lower stone. It has been observed at numerous other corners that when the County Surveyors of the second half of the 19th century set two rocks at a corner, the lower stone was usually set horizontally, acting as a base and the upper stone was set vertically. The character of the stone found at this corner matches that observation. The etched "+" on the top, center of the stone is also characteristic of the lower stone. Furthermore, the depth of the stone, being embedded in the clay layer below the road, approximately 14 inches below the bottom of the road bed, fits well with the fact that the upper stone was recorded to be 15 inches tall, hence would have protruded slightly into the bottom of the road bed. This is also characteristic of other top, vertical stones set by County Surveyors in that era. The found stone was held as the marking the corner and the harrison monument was set directly over the etched "+" on the top of the stone.

Another stone was found 1.5 feet East and 0.3 foot South of the record stone, being at 4 inches deep and measuring 13 inches tall by 10 inches N-S by 6 inches E-W with no visible marks. Two other stones were found against each other, approximately 0.8 foot south of the record stone, being 13x9x6 inches at 13 inches deep and 9x5x3 inches deep at 23 inches, respectively. The latter stone was against the lower west edge of the former stone. The rail and three extra stones were removed during excavation. This corner was originally established as a wood post in July, 1821.

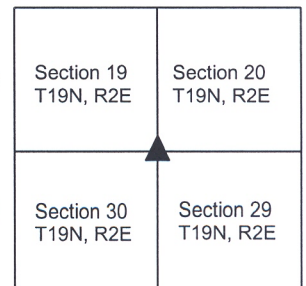



Kenneth E. Hedge, County Surveyor


James S. Swift, IN LS 20200054

July 25, 2011, Revised February 6, 2013

Marion Twp



Union Twp

PHOTOGRAPHIC DOCUMENTATION

Date of photography: June 14, 2010

The railroad rail and the first stone exposed.



The railroad rail and the second stone exposed.



View of the rail, the first stone exposed and the post on the south side of the road.



The record lower stone with etched mark on top.



For details and documentation, refer to related sheet "Section Corner Record."

SECTION CORNER RECORD

NE 200-750

BOONE COUNTY SURVEYOR'S OFFICE

State Plane grid coordinates NAD83 (NSRS 2007):

North: 1756874.16 East: 3164353.96 (U.S. survey feet)

Type of monument: Harrison, 4" disk 'Section Corner'

Depth: Six inches below adjacent gravel road surface

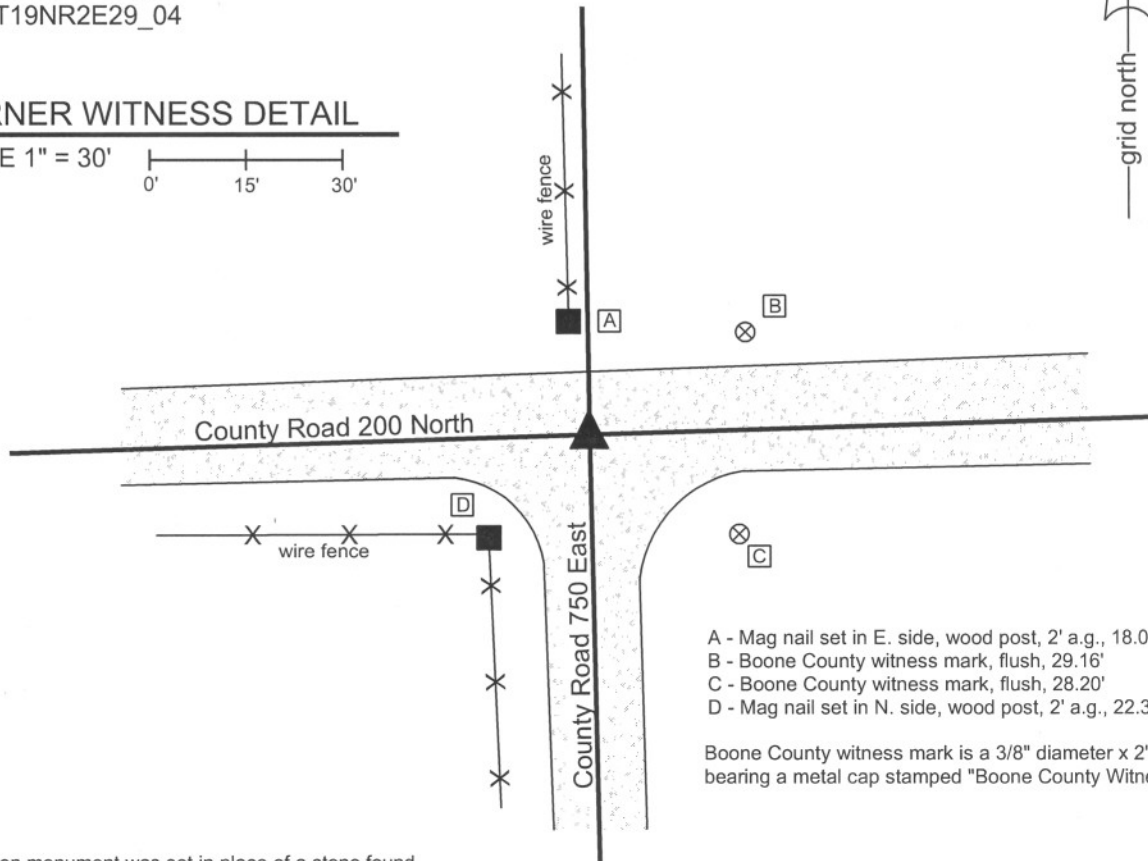
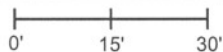
Indiana tie card references:

IN02_T19NR2E20_76

IN02_T19NR2E29_04

CORNER WITNESS DETAIL

SCALE 1" = 30'



- A - Mag nail set in E. side, wood post, 2' a.g., 18.08'
- B - Boone County witness mark, flush, 29.16'
- C - Boone County witness mark, flush, 28.20'
- D - Mag nail set in N. side, wood post, 2' a.g., 22.33'

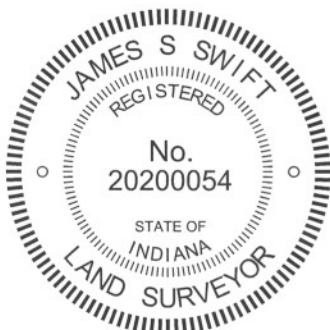
Boone County witness mark is a 3/8" diameter x 2' long rebar bearing a metal cap stamped "Boone County Witness Point."

The harrison monument was set in place of a stone found.

A BCS record of January 28, 1869 states "Reestablished from stump of Oak and old stake. Set a Rock 15.8 by 12 in. marked +..." A BCS tie card dated July 8, 1974 states "found rail."

This corner was excavated on June 15, 2010. Prior to excavation a vertical section of railroad rail was found at 9 inches deep. Excavation revealed a stone found at 7 inches deep, approximately 2 feet northwest of the rail. The stone is vertical and embedded in the clay layer below the road, protruding 5 inches out of the clay layer, into the bottom of the road bed. The top of the stone appears to be broken off and no specific markings were found. The stone measured 15 inches tall by 13 inches E-W by 9 inches N-S. The E-W, N-S dimensions uniformly measure 1 inch larger than the record dimension and it is estimated that approximately 1 inch was broken off of the top. Hence, the entire stone appeared to be 1 inch larger than the record dimension. This uniform variation from the record dimension has been observed on the stones found at other corners. The stone was accepted as being the record stone described in the 1869 record and was held as marking the corner. The stone was removed and a harrison monument was set in its place. The rail, also removed during excavation, had been 1.4 feet east and 1.6 feet south of the stone.

This corner was originally established as a wood post in July, 1821.



Kenneth E. Hedge
Kenneth E. Hedge, County Surveyor

James S. Swift
James S. Swift, IN LS 20200054
July 25, 2011

Marion Twp

Section 20
T19N, R2E

Union Twp

Section 29
T19N, R2E

PHOTOGRAPHIC DOCUMENTATION

Date of photography: June 15, 2010

View of the stone from the north.



View of the stone from above.



View of the stone from the north, looking south along County Road 200 North.



View of the stone from above and south.



For details and documentation, refer to related sheet "Section Corner Record."

SECTION CORNER RECORD

BOONE COUNTY SURVEYOR'S OFFICE

NE 200-850

State Plane grid coordinates NAD83 (NSRS 2007):
 North: 1757030.07 East: 3169680.37 (U.S. survey feet)

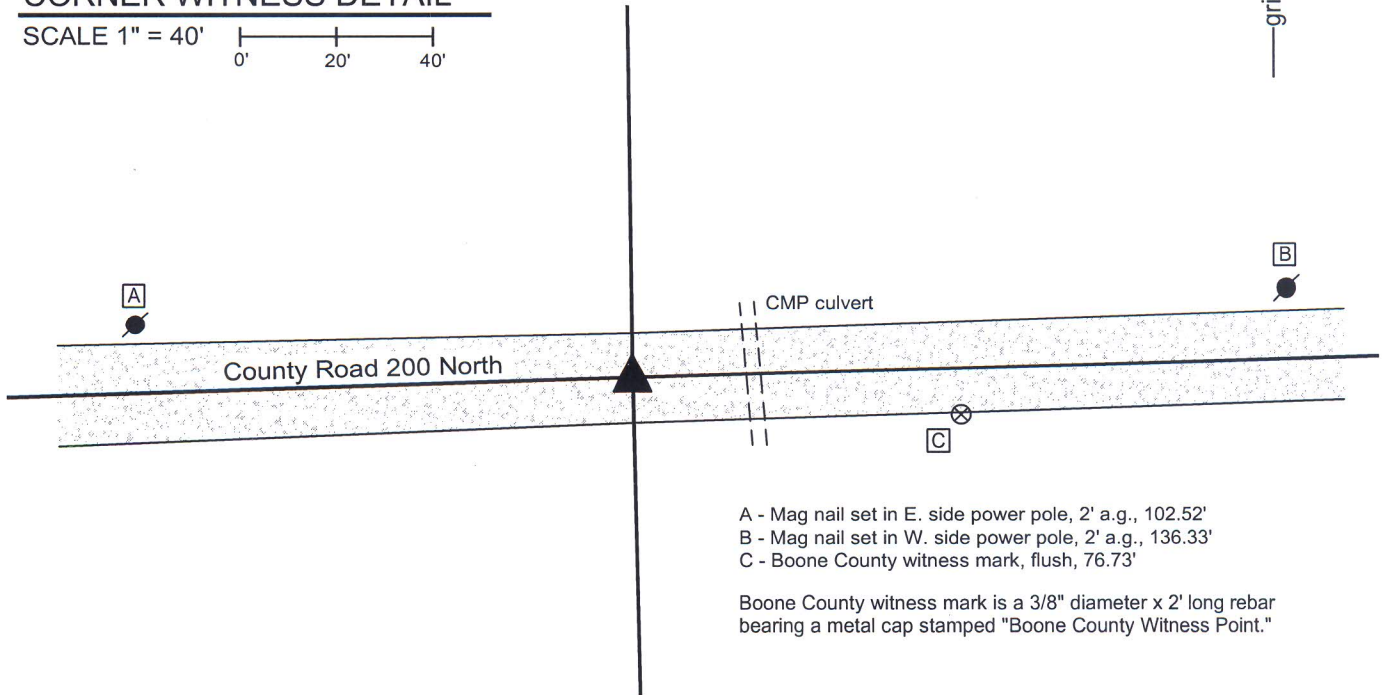
Type of monument: Harrison, 4" disk 'Section Corner'
 Depth: six inches below adjacent gravel road surface

Indiana tie card references:
 IN02_T19NR2E21_76
 IN02_T19NR2E28_04



CORNER WITNESS DETAIL

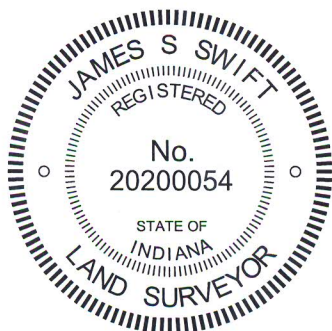
SCALE 1" = 40'
 0' 20' 40'



- A - Mag nail set in E. side power pole, 2' a.g., 102.52'
- B - Mag nail set in W. side power pole, 2' a.g., 136.33'
- C - Boone County witness mark, flush, 76.73'

Boone County witness mark is a 3/8" diameter x 2' long rebar bearing a metal cap stamped "Boone County Witness Point."

The harrison monument was set in place of a stone found. No specific descriptions of this corner were found in the BCS Surveyor's Record. A BCS tie card dated July 8, 1974 states "wood stake found." This corner was excavated on March 30, 2011. Prior to excavation no monument was found, nor was a position for the corner able to be determined from information found in private surveys. A theoretical position for the corner was established at the midpoint of the line connecting the section corners to the east and west. Excavation at this point yielded a stone found at 12 inches deep, approximately 1 foot east of the theoretical midpoint corner position. The stone was found in a vertical orientation, being 12 inches tall by 6 inches N-S by 4 inches E-W. The bottom half of the stone was embedded in the clay layer below the road. No specific markings were found on the stone. The center of the top of the stone was held as the specific position of the corner. The stone was removed and replaced with a harrison monument. This corner was originally established as a wood post in July, 1821.



Kenneth E. Hedge
 Kenneth E. Hedge, County Surveyor

James S. Swift
 James S. Swift, IN LS 20200054

March 1, 2012, revised January 23, 2013

Marion Twp

Section 21
 T19N, R2E

Union Twp

Section 28
 T19N, R2E

PHOTOGRAPHIC DOCUMENTATION

Date of photography: March 30, 2011

View of the stone as exposed and embedded.



View of the stone from above.



The stone removed from the road.



The stone removed from the road.



For details and documentation, refer to related sheet "Section Corner Record."

SECTION CORNER RECORD

NE 250-700

BOONE COUNTY SURVEYOR'S OFFICE

State Plane grid coordinates NAD83 (2011):

North: 1759437.04 East: 3161659.72 (U.S. survey feet)

Type of monument: Harrison, 4" disk 'Section Corner'

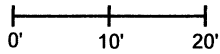
Depth: Three inches above surrounding ground

Indiana tie card references:

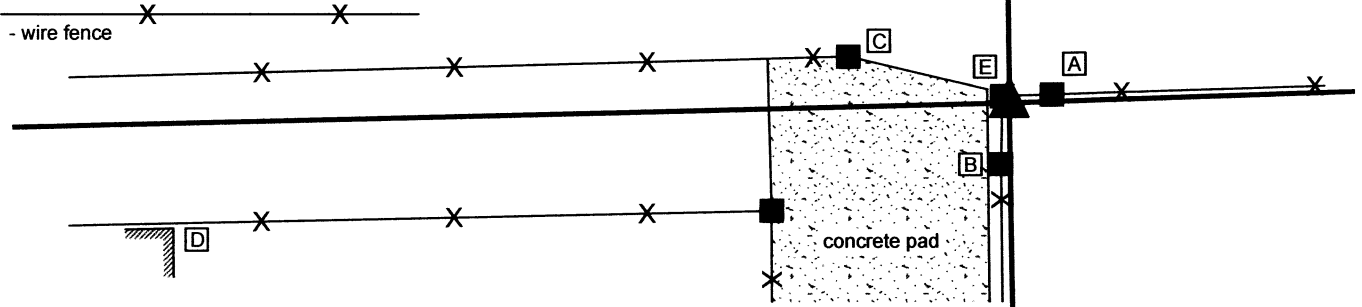
IN02_T19NR2E19_44 IN02_T19NR2E20_36

CORNER WITNESS DETAIL

SCALE 1" = 20'



- A - Mag nail set in S. side wood brace post, 2' a.g., 4.4'
- B - Mag nail set in E. side wood brace post, 2' a.g., 6.4'
- C - Mag nail set in S. side wood corner post, 2' a.g., 17.4'
- D - N.E. corner of pole barn, flush, 87.6'
- E - S.E. corner of wood corner post, 0.7'



The Harrison monument was set in place of a stone found.

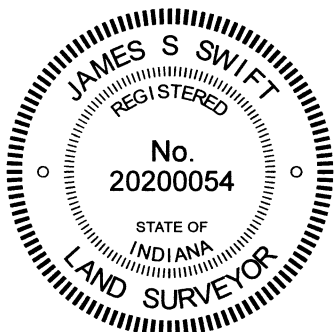
A BCS record dated January 28, 1869 states, with respect to this corner, "Reestablished from stumps of both trees and a stake. Set two Rocks one 6.5 by 5 marked +. Top Rock 14.12 by 9 in. Marked +."

No recent BCS tie cards were found referencing this corner. A survey recorded as Instrument 2018007278 shows the corner as being a calculated position 2.3 feet east of an 8-inch by 8-inch wood post. The survey does not state how the position of the corner was calculated or why it was established east of the wood post.

Excavation was performed at this corner on April 11, 2023. Two 8-inch by 8-inch square wood posts were found in the immediate vicinity of the corner. One of the posts is clearly the corner of fences to the east and south while the other post appears to be a brace post for the corner post, 5 feet east of the corner post. It is not typical for brace posts to be so large, but no north-south fencing was observed attached to the post and a wood brace was observed anchored to the west side of the post, slightly below ground level. Fencing to the north and south generally falls along a line defined by the corner post and the southwest corner of Section 20 and a line defined by the corner post and the expected (but not finalized) position of the northwest corner of Section 20. It is noted that the remote fence evidence is slightly inconclusive and that the fences fall up to several feet either side of these lines. The fencing to the east lines up well with an old corner post found at the apparent southeast corner of the northwest quarter of Section 20.

Excavation around the two posts revealed numerous rocks, most of which appeared to be bracing the corner post. A rock found near the southeast edge of the corner post measures 13 inches by 11 inches by 8 inches, one inch less in all dimensions than the record dimensions of the upper rock called for in the 1860 BCS entry. Notably, this phenomenon of found stones being one or two inches less than the record dimension has been observed at several other corners throughout the county. This particular rock has a very rough surface. Several potential marks were observed but none could be positively identified as the type of "+" mark typically etched by this office in the 1800s, given the rough surface of the rock. It is noted that this rock, unique among the various found rocks, did not appear to be bracing the corner post. No stone was found below, which may indicate that this stone was displaced from its original position. The record lower stone was not found anywhere in the vicinity of the corner. The found rock, being at the southeast corner of the wood corner post, fit well with the evidence to the north, south and east. The rock was held as marking the corner and was replaced with a Harrison monument on April 11, 2023.

This corner was originally established as a wood post in 1821.



Carol Cunningham
Carol Cunningham, County Surveyor

James S. Swift
James S. Swift, IN LS 20200054
April 26, 2023

Marion Township

Section 19 T19N, R2E	Section 20 T19N, R2E
-------------------------	-------------------------

SECTION CORNER RECORD

BOONE COUNTY SURVEYOR'S OFFICE

NE 250-800

State Plane grid coordinates NAD83 (CORS96):

North: 1759598.07 East: 3166965.20 (U.S. survey feet)

Type of monument: Harrison, 4" disk 'Section Corner'

Depth: six inches below adjacent gravel road surface

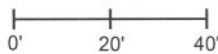
Indiana tie card references:

IN02_T19NR2E20_44

IN02_T19NR2E21_36

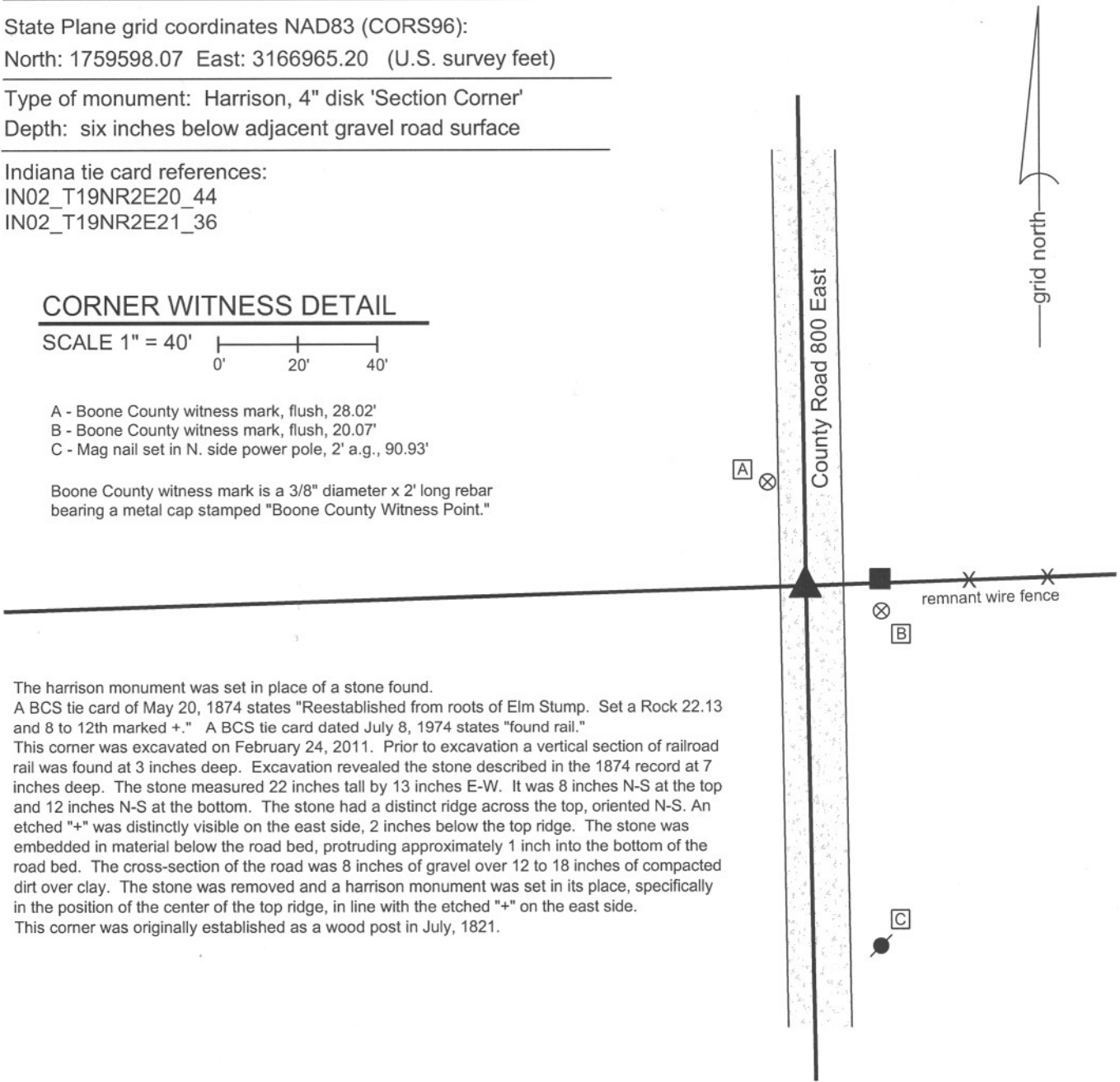
CORNER WITNESS DETAIL

SCALE 1" = 40'



- A - Boone County witness mark, flush, 28.02'
- B - Boone County witness mark, flush, 20.07'
- C - Mag nail set in N. side power pole, 2' a.g., 90.93'

Boone County witness mark is a 3/8" diameter x 2' long rebar bearing a metal cap stamped "Boone County Witness Point."

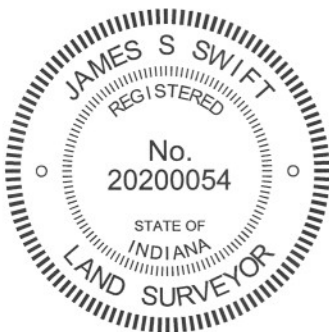


The harrison monument was set in place of a stone found.

A BCS tie card of May 20, 1874 states "Reestablished from roots of Elm Stump. Set a Rock 22.13 and 8 to 12th marked +." A BCS tie card dated July 8, 1974 states "found rail."

This corner was excavated on February 24, 2011. Prior to excavation a vertical section of railroad rail was found at 3 inches deep. Excavation revealed the stone described in the 1874 record at 7 inches deep. The stone measured 22 inches tall by 13 inches E-W. It was 8 inches N-S at the top and 12 inches N-S at the bottom. The stone had a distinct ridge across the top, oriented N-S. An etched "+" was distinctly visible on the east side, 2 inches below the top ridge. The stone was embedded in material below the road bed, protruding approximately 1 inch into the bottom of the road bed. The cross-section of the road was 8 inches of gravel over 12 to 18 inches of compacted dirt over clay. The stone was removed and a harrison monument was set in its place, specifically in the position of the center of the top ridge, in line with the etched "+" on the east side.

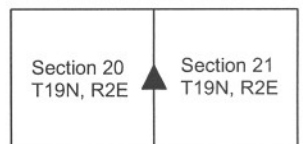
This corner was originally established as a wood post in July, 1821.



Kenneth E. Hedge
 Kenneth E. Hedge, County Surveyor

James S. Swift
 James S. Swift, IN LS 20200054
 March 1, 2012

Marion Township



PHOTOGRAPHIC DOCUMENTATION

Date of photography: February 24, 2011

View of the stone as first exposed.



The stone washed with water, showing the etched mark on the east side.



View of the stone from above.



The stone (supported by the rail) after removal from the road bed.



For details and documentation, refer to related sheet "Section Corner Record."

SECTION CORNER RECORD

NE 300-750

BOONE COUNTY SURVEYOR'S OFFICE

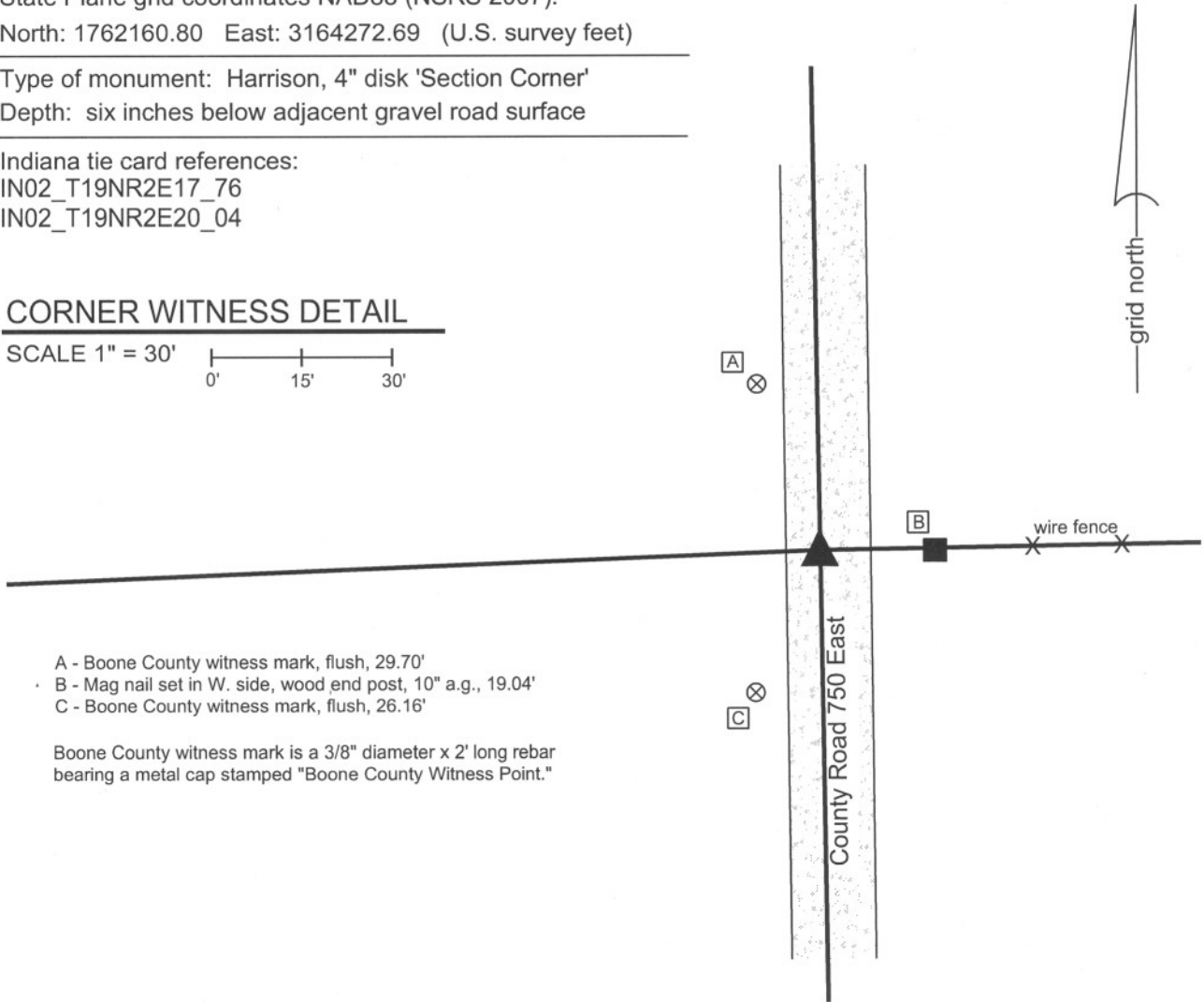
State Plane grid coordinates NAD83 (NSRS 2007):
North: 1762160.80 East: 3164272.69 (U.S. survey feet)

Type of monument: Harrison, 4" disk 'Section Corner'
Depth: six inches below adjacent gravel road surface

Indiana tie card references:
IN02_T19NR2E17_76
IN02_T19NR2E20_04

CORNER WITNESS DETAIL

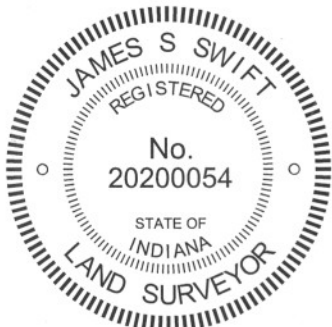
SCALE 1" = 30'
0' 15' 30'



- A - Boone County witness mark, flush, 29.70'
- B - Mag nail set in W. side, wood end post, 10" a.g., 19.04'
- C - Boone County witness mark, flush, 26.16'

Boone County witness mark is a 3/8" diameter x 2' long rebar bearing a metal cap stamped "Boone County Witness Point."

The harrison monument was set in place of a stone found.
 A BCS record of May 2, 1861 states "Set a Rock 12,7, 6 in." A BCS tie card dated May 29, 1974 states "No stone found."
 This corner was excavated on September 2, 2010. Prior to excavation a 5/8 inch diameter rebar was found at 1 inch deep and the apparent top of a rock was found at the surface, slightly south of the rebar. Excavation revealed the rock to be the record stone from 1861, measuring 7 inches N-S by 9 inches E-W by 12 inches tall. An etched "+" was vaguely visible on the top, center of the rock but appeared to have been scraped substantially by a road grader. The rebar had been 0.8 foot north of the etched "+" on the stone. The road bed at this corner is only 3 inches of gravel above the clay layer. The stone was found at the surface of the road, hence was embedded in the clay, protruding 3 inches into the road bed, which is consistent with the depth of many other stones found from that era. The stone and rebar were removed and a harrison monument was set in place of the stone, at the position of the top, center and etched "+" on the stone. It is noted that the 5/8 inch rebar probably was not the monument set in 1974, as rebars found at other corners documented in 1974 from that year have been exclusively 1/2 inch diameter.
 This corner was originally established as a wood post in July, 1821.



Kenneth E. Hedge
 Kenneth E. Hedge, County Surveyor

James S. Swift
 James S. Swift, IN LS 20200054
 July 25, 2011

Marion Twp

Section 17
T19N, R2E

Section 20
T19N, R2E

SECTION CORNER RECORD

BOONE COUNTY SURVEYOR'S OFFICE

NE 300-800

State Plane grid coordinates NAD83 (CORS96):

North: 1762241.59 East: 3166932.02 (U.S. survey feet)

Type of monument: Harrison, 4" disk 'Section Corner'

Depth: six inches below adjacent gravel road surface

Indiana tie card references:

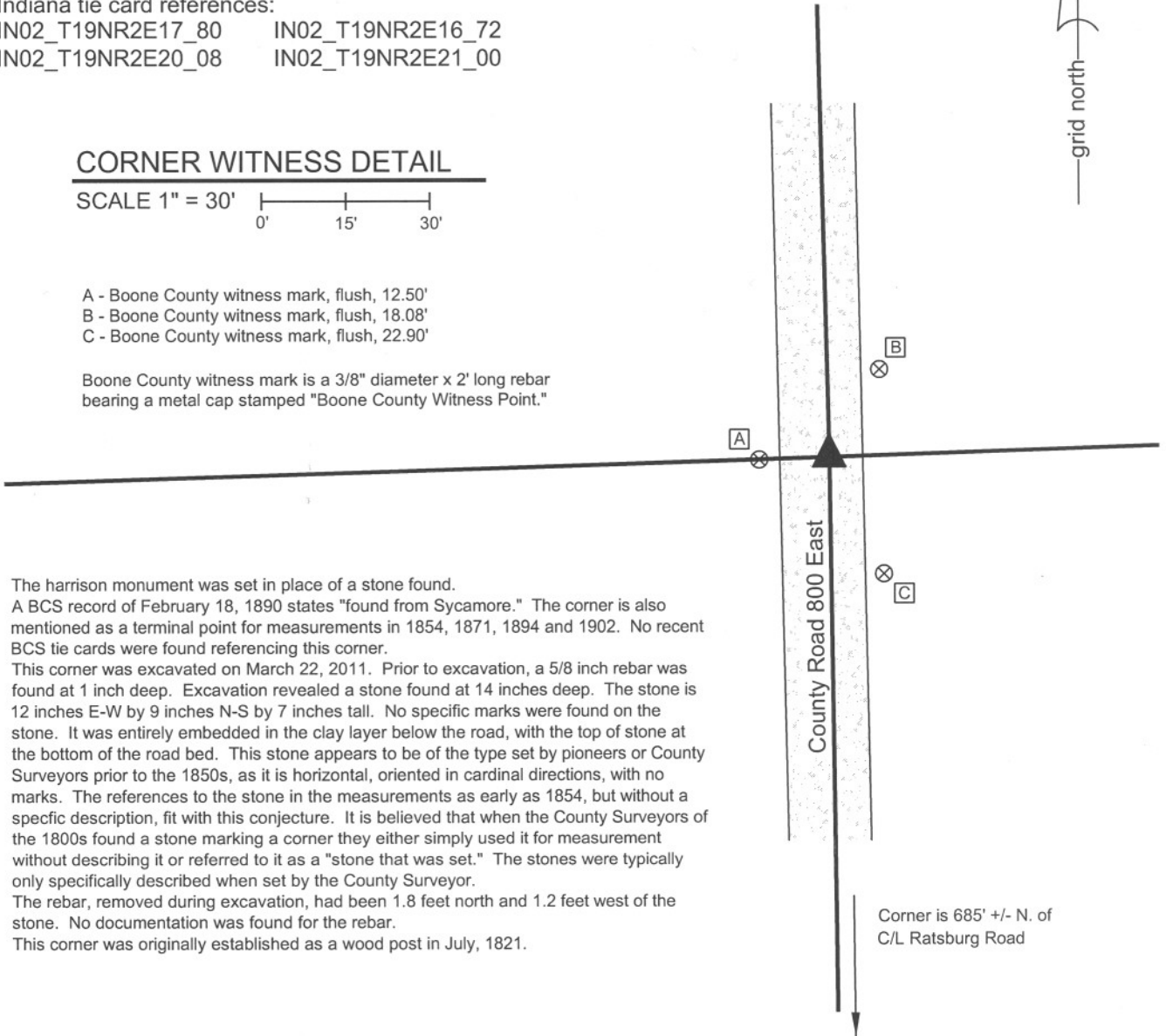
IN02_T19NR2E17_80 IN02_T19NR2E16_72
 IN02_T19NR2E20_08 IN02_T19NR2E21_00

CORNER WITNESS DETAIL

SCALE 1" = 30'

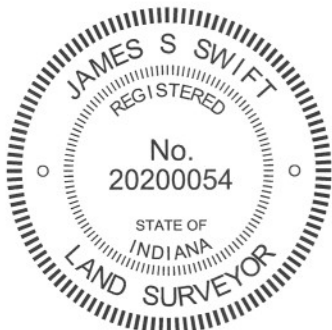
- A - Boone County witness mark, flush, 12.50'
- B - Boone County witness mark, flush, 18.08'
- C - Boone County witness mark, flush, 22.90'

Boone County witness mark is a 3/8" diameter x 2' long rebar bearing a metal cap stamped "Boone County Witness Point."



The harrison monument was set in place of a stone found. A BCS record of February 18, 1890 states "found from Sycamore." The corner is also mentioned as a terminal point for measurements in 1854, 1871, 1894 and 1902. No recent BCS tie cards were found referencing this corner. This corner was excavated on March 22, 2011. Prior to excavation, a 5/8 inch rebar was found at 1 inch deep. Excavation revealed a stone found at 14 inches deep. The stone is 12 inches E-W by 9 inches N-S by 7 inches tall. No specific marks were found on the stone. It was entirely embedded in the clay layer below the road, with the top of stone at the bottom of the road bed. This stone appears to be of the type set by pioneers or County Surveyors prior to the 1850s, as it is horizontal, oriented in cardinal directions, with no marks. The references to the stone in the measurements as early as 1854, but without a specific description, fit with this conjecture. It is believed that when the County Surveyors of the 1800s found a stone marking a corner they either simply used it for measurement without describing it or referred to it as a "stone that was set." The stones were typically only specifically described when set by the County Surveyor. The rebar, removed during excavation, had been 1.8 feet north and 1.2 feet west of the stone. No documentation was found for the rebar. This corner was originally established as a wood post in July, 1821.

Corner is 685' +/- N. of
 C/L Ratsburg Road



Kenneth E. Hedge
 Kenneth E. Hedge, County Surveyor

James S. Swift
 James S. Swift, IN LS 20200054
 March 1, 2012

Marion Township

Section 17 T19N, R2E	Section 16 T19N, R2E
Section 20 T19N, R2E	Section 21 T19N, R2E

PHOTOGRAPHIC DOCUMENTATION

Date of photography: March 22, 2011

View of the stone as first exposed.



The stone removed from the road bed. The scratch mark visible on top of the stone was made by the excavator at the time of excavation.



View from the north, looking across the stone and south along County Road 800 East.



For details and documentation, refer to related sheet "Section Corner Record."