

SECTION CORNER RECORD

BOONE COUNTY SURVEYOR'S OFFICE

SE 300-100

State Plane grid coordinates NAD83 (CORS96):

North: 1729869.74 East: 3129924.20 (U.S. survey feet)

Type of monument: Harrison, 4" disk 'Section Corner'

Depth: six inches below adjacent gravel road surface

Indiana tie card references:

IN02_T18NR1E18_80

IN02_T18NR1E17_72

IN02_T18NR1E19_08

IN02_T18NR1E20_00

CORNER WITNESS DETAIL

SCALE 1" = 30'



A - Boone County witness mark, flush, 12.43'

B - Boone County witness mark, flush, 25.76'

C - Mag nail set in N. side power pole, 2' a.g., 64.05'

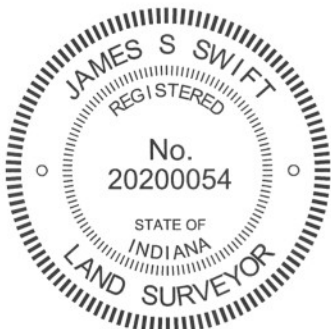
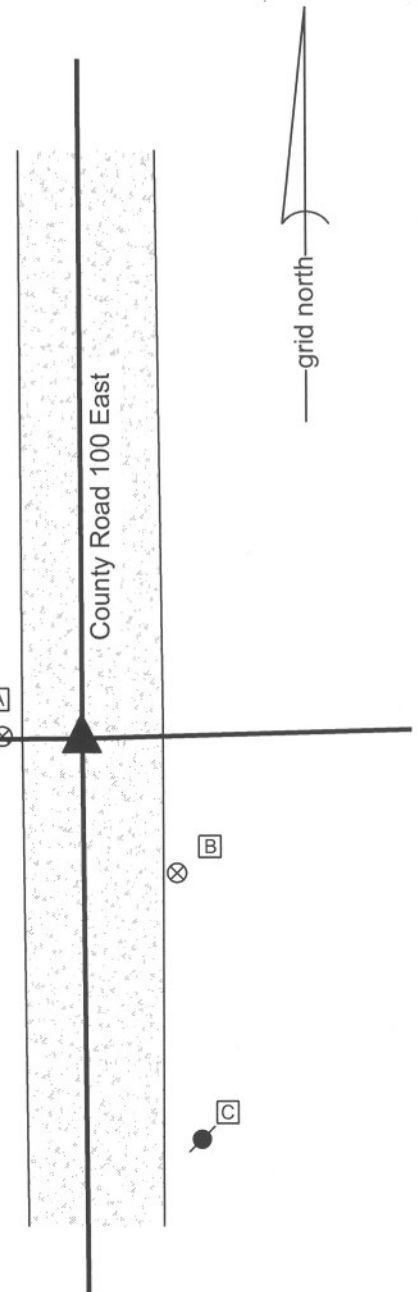
Boone County witness mark is a 3/8" diameter x 2' long rebar bearing a metal cap stamped "Boone County Witness Point."

The harrison monument was set in place of a railroad rail found.

No specific descriptions of this corner were found in the BCS Surveyor's Record. A BCS tie card dated May 1968 shows the corner and states "stone with + lying in sideditch."

This corner was excavated on February 28, 2011. Two vertical sections of railroad rail were found at 3 inches deep. One rail was 0.7 foot north and 0.7 foot west of the other rail. The one remaining distance tie reference from the 1968 tie card is a wood post on the west side of the road. The tie card shows the corner being 18 feet east of this post and 19 feet west of the post on the east side of the road. Neither rail fits with the tie to the post on the west, though the northwest of the two rails was at approximately 19 feet. The other rail was closer to 20 feet from the post. Excavation of an area 8 feet N-S by 7 feet E-W, approximately centered on the rails, yielded no further evidence. As the northwesterly of the two rails fit with one dimension shown on the tie card, albeit reversed from the orientation shown on the tie card, and was also more in line with the post, this rail was held as the corner. Both rails were removed during excavation and a harrison monument was set in the position of the northwesterly rail.

This corner was originally established as a wood post in June 1820.



Kenneth E. Hedge
 Kenneth E. Hedge, County Surveyor

James S. Swift
 James S. Swift, IN LS 20200054
 March 1, 2012

Center Twp	Section 18 T18N, R1E	Section 17 T18N, R1E
Harrison Twp	Section 19 T18N, R1E	Section 20 T18N, R1E

SECTION CORNER RECORD

SE 300-150

BOONE COUNTY SURVEYOR'S OFFICE

State Plane grid coordinates NAD83 (CORS96):

North: 1729930.27 East: 3132596.33 (U.S. survey feet)

Type of monument: Harrison, 4" disk 'Section Corner'

Depth: Two inches above adjacent ground.

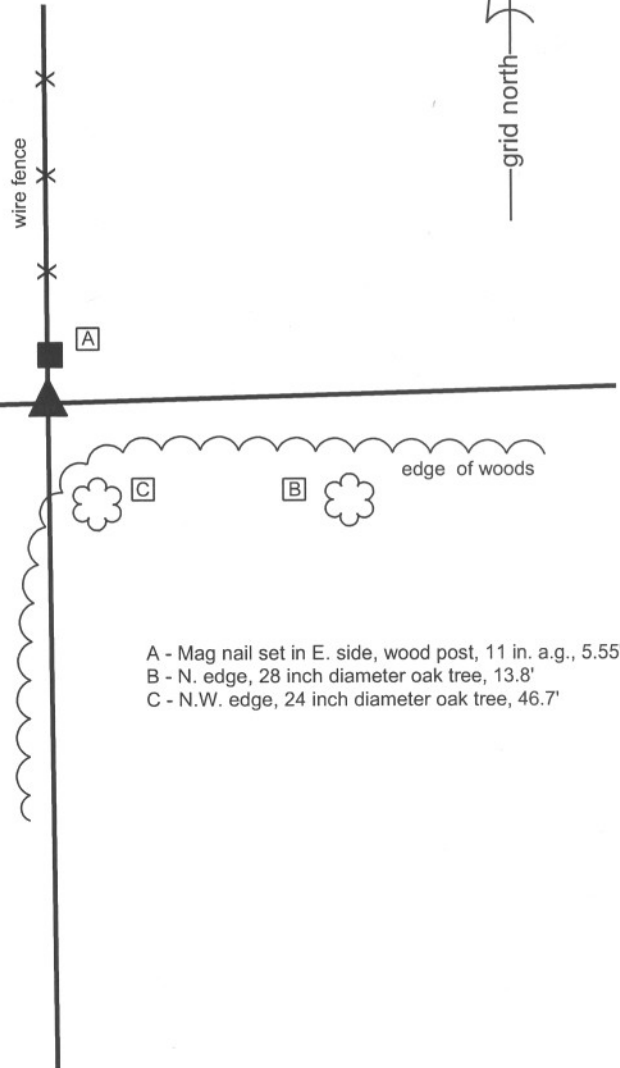
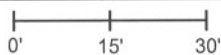
Indiana tie card references:

IN02_T18NR1E17_76

IN02_T18NR1E20_04

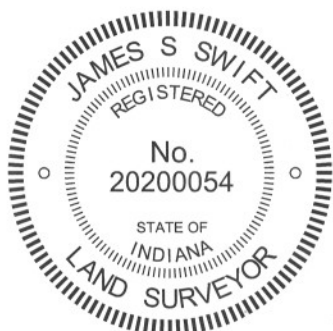
CORNER WITNESS DETAIL

SCALE 1" = 30'



The harrison monument was set over a stone found.
A BCS record of April 5, 1877 states "Reestablished from stump of Burr Oak which shows about 55 annual growths before cutting. Set Rock 15,11,8 +."
No recent BCS tie cards were found referencing this corner.
Excavation was performed at this corner on October 29, 2012. Prior to excavation a steel post, broken off flush with ground level, was found. This post is known to have been held as marking the corner for previous private surveys. Excavation revealed the stone described in the 1877 record found at 8 inches deep. With the top 8 inches of the stone exposed, it measures 11 inches E-W by 8 inches N-S. A mark was found on the top of the stone. The mark appears to be purposely made but isn't as clear and distinct as the marks found on many other corner stones. The chisel mark was likely either broken more than intended or has eroded. The stone is 0.8 foot west and 1.4 feet south of the found piece of steel post. The stone matches the dimensions from the 1877 record and fits with local evidence in the form of the fence to the north. The stone is also at the westerly prolongation of a fence which exists along the section line beginning approximately 1200 feet east of this corner and extending east to the edge of County Road 200 East. The stone was left in place and a harrison monument was set directly over the etched mark on the top of the stone.
This corner was originally established as a wood post in June, 1820.

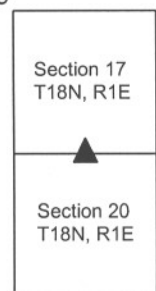
- A - Mag nail set in E. side, wood post, 11 in. a.g., 5.55'
- B - N. edge, 28 inch diameter oak tree, 13.8'
- C - N.W. edge, 24 inch diameter oak tree, 46.7'



Kenneth E. Hedge
Kenneth E. Hedge, County Surveyor

James S. Swift
James S. Swift, IN LS 20200054
January 15, 2013

Center Township



Perry Township

PHOTOGRAPHIC DOCUMENTATION

Date of photography: October 29, 2012

The vicinity of the corner prior to excavation.
View from the northwest.



The stone and the wood end post. View from
the south, looking north along the N-S fence.



The stone exposed.



The stone within the section of HDPE storm pipe,
immediately prior to being encased in concrete.



For details and documentation, refer to
related sheet "Section Corner Record."

SECTION CORNER RECORD

SE 300-200

BOONE COUNTY SURVEYOR'S OFFICE

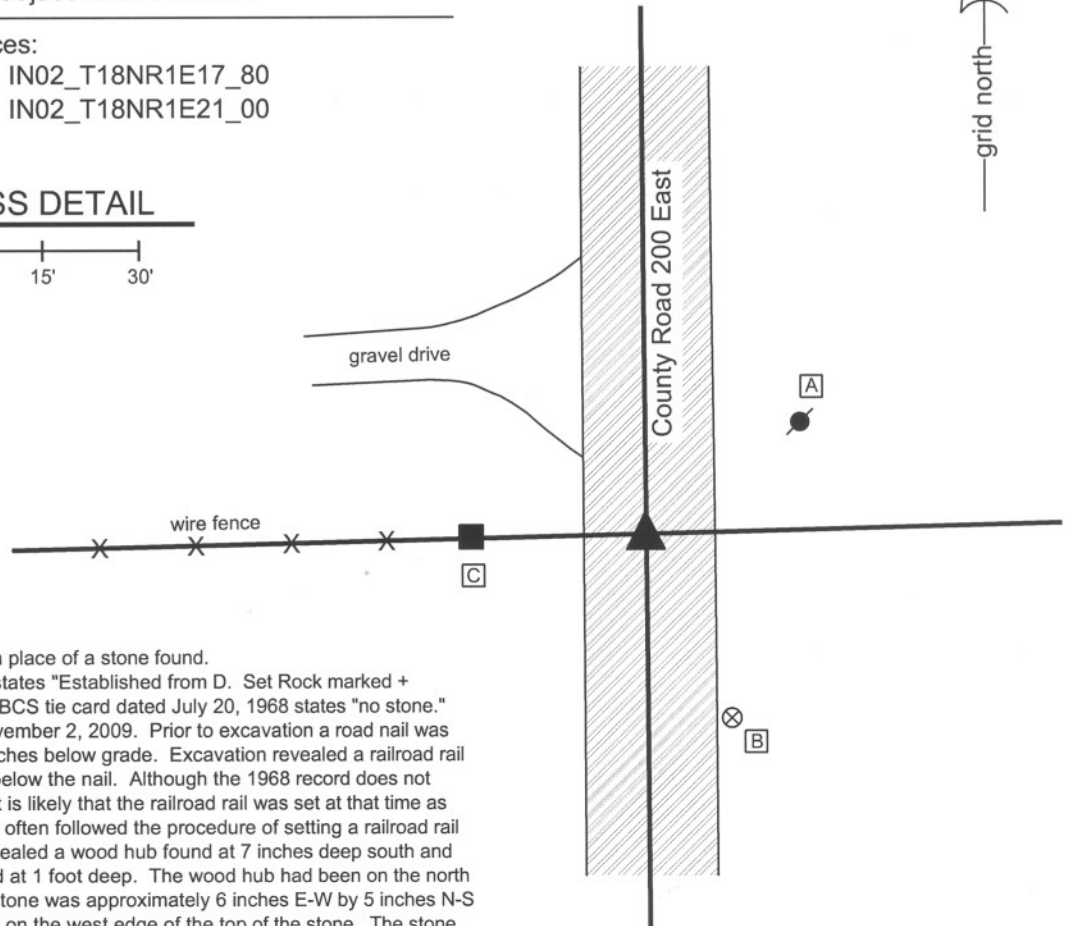
State Plane grid coordinates NAD83 (NSRS 2007):
 North: 1730003.10 East: 3135269.676 (U.S. survey feet)

Type of monument: Harrison, 4" disk 'Section Corner'
 Depth: One inch below adjacent road surface

Indiana tie card references:
 IN02_T18NR1E16_72 IN02_T18NR1E17_80
 IN02_T18NR1E20_08 IN02_T18NR1E21_00

CORNER WITNESS DETAIL

SCALE 1" = 30'



The harrison monument was set in place of a stone found. A BCS record of May 8 - 9, 1901 states "Established from D. Set Rock marked + 12.10.8 1/2 brick underneath." A BCS tie card dated July 20, 1968 states "no stone." This corner was excavated on November 2, 2009. Prior to excavation a road nail was visible in a hole in the asphalt 2 inches below grade. Excavation revealed a railroad rail on end at 9 inches deep, directly below the nail. Although the 1968 record does not specify what monument was set, it is likely that the railroad rail was set at that time as BCS field crews of that time-frame often followed the procedure of setting a railroad rail at the corner. Excavation also revealed a wood hub found at 7 inches deep south and east of the rail. A stone was found at 1 foot deep. The wood hub had been on the north side of the stone. The top of the stone was approximately 6 inches E-W by 5 inches N-S and an etched "+" is clearly visible on the west edge of the top of the stone. The stone was removed and measured. The maximum dimensions of the stone are 10 inches tall by 8 inches E-W by 6 inches N-S. This is uniformly 2 inches smaller than the dimensions reported in the record. The record also calls for 1/2 brick underneath, which was found directly below the stone. The 1/2 brick was somewhat deteriorated was visible in the form of various small pieces. The stone was accepted as being the same monument set in 1901, but it is not clear why the 1901 record describes the stone as 2 inches larger in all dimensions than it actually is. The harrison monument was set in place of the stone at the same horizontal position as the top, high point of the stone, in line with the etched + on the west side. The nail and railroad rail, both removed during excavation, were 0.4 foot north and 0.6 foot west of the top, high point of the stone. This corner was originally established as a wood post in June, 1820.

- A - Mag nail set in S. side power pole, 2.0' a.g., 28.7'
- B - Boone County witness mark, flush, 31.68'
- C - Mag nail set in E. side wood post, 0.5' a.g., 25.6'

Boone County witness mark is a 3/8" diameter x 2' long rebar bearing a metal cap stamped "Boone County Witness Point."



Kenneth E. Hedge
 Kenneth E. Hedge, County Surveyor

Center Twp

James S. Swift
 James S. Swift, IN LS 20200054
 July 14, 2010

Perry Twp

Section 17 T18N, R1E	Section 16 T18N, R1E
Section 20 T18N, R1E	Section 21 T18N, R1E

PHOTOGRAPHIC DOCUMENTATION
Date of photography: November 2, 2009

View of the stone as first exposed.
View from above and west.



Close-up on the stone, showing the etched mark on the west side of the top of the stone.



View of the stone from above and north.



For details and documentation, refer to related sheet "Section Corner Record."

View from the south, looking across the stone and north along County Road 200 East.



SECTION CORNER RECORD

SE 350-100

BOONE COUNTY SURVEYOR'S OFFICE

State Plane grid coordinates NAD83 (CORS96):

North: 1727214.59 East: 3129948.44 (U.S. survey feet)

Type of monument: Harrison, 4" disk 'Section Corner'

Depth: six inches below adjacent gravel road surface

Indiana tie card references:

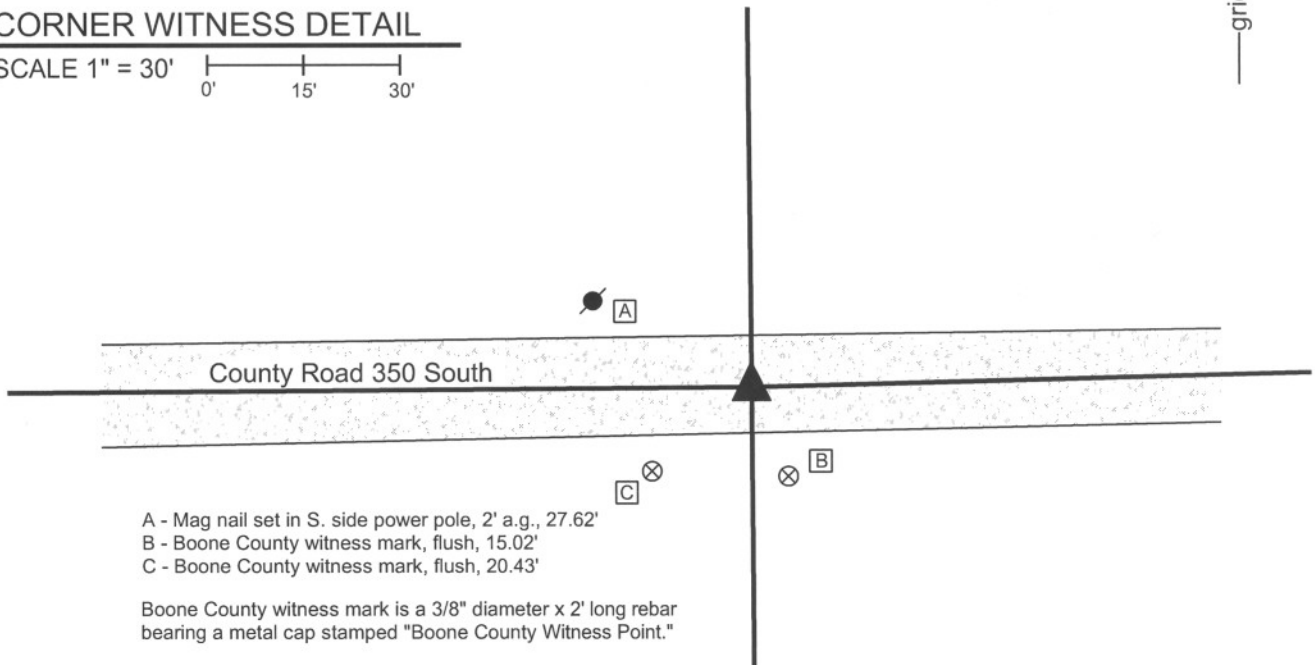
IN02_T18NR1E19_44

IN02_T18NR1E20_36



CORNER WITNESS DETAIL

SCALE 1" = 30'

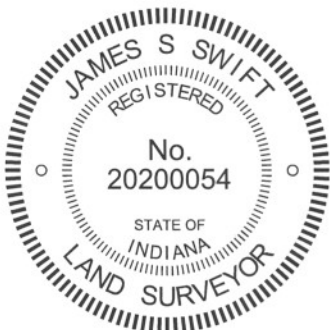


The harrison monument was set in place of a railroad rail found.

A BCS record of June 18-19, 1866 states "Reestablished from stump of Ash and roots of Maple. Set Rock 12.9.8 marked +." A BCS tie card dated May, 1968 states "no stone."

This corner was excavated on February 28, 2011. Prior to excavation a vertical section of railroad rail was found in the center of the road at 1 inch deep. Excavation revealed another railroad rail fnd at a similar depth, 1.7 feet south of the first found rail. Excavation of an area 8' north, 5 feet south, 5 feet east and 6 feet west of the first found rail yielded no further evidence of the corner. The road bed is only approximately 10 inches deep in this area. It is noted that the road is slightly below the grade of the adjoining ground on the north side of the road, and slightly above the adjoining grade on the south side of the road. With such minimal road bed and being so close to the grade of the surrounding ground, it is reasonable to expect that the record stone may have been removed by road grading equipment in the past. The northerly of the two rails fit better with the local evidence in the form of the road, both in the immediate vicinity of the corner and as perceived along the longer lines of the road extended to the east and west. Both rails were removed during excavation and the northerly of the two rails was replaced with a harrison monument. Subsequently the harrison monument was removed by a crew of the Boone County Highway Department working on the road. A new harrison monument was set in the same position as the old harrison on June 3, 2011.

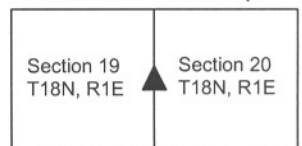
This corner was originally established as a wood post in June, 1820.



Kenneth E. Hedge, County Surveyor

James S. Swift, IN LS 20200054
March 1, 2012

Harrison Township



SECTION CORNER RECORD

SE 350-200

BOONE COUNTY SURVEYOR'S OFFICE

State Plane grid coordinates NAD83 (NSRS 2007):

North: 1727348.13 East: 3135290.54 (U.S. survey feet)

Type of monument: Harrison, 4" disk 'Section Corner'

Depth: One inch below adjacent road surface

Indiana tie card references:

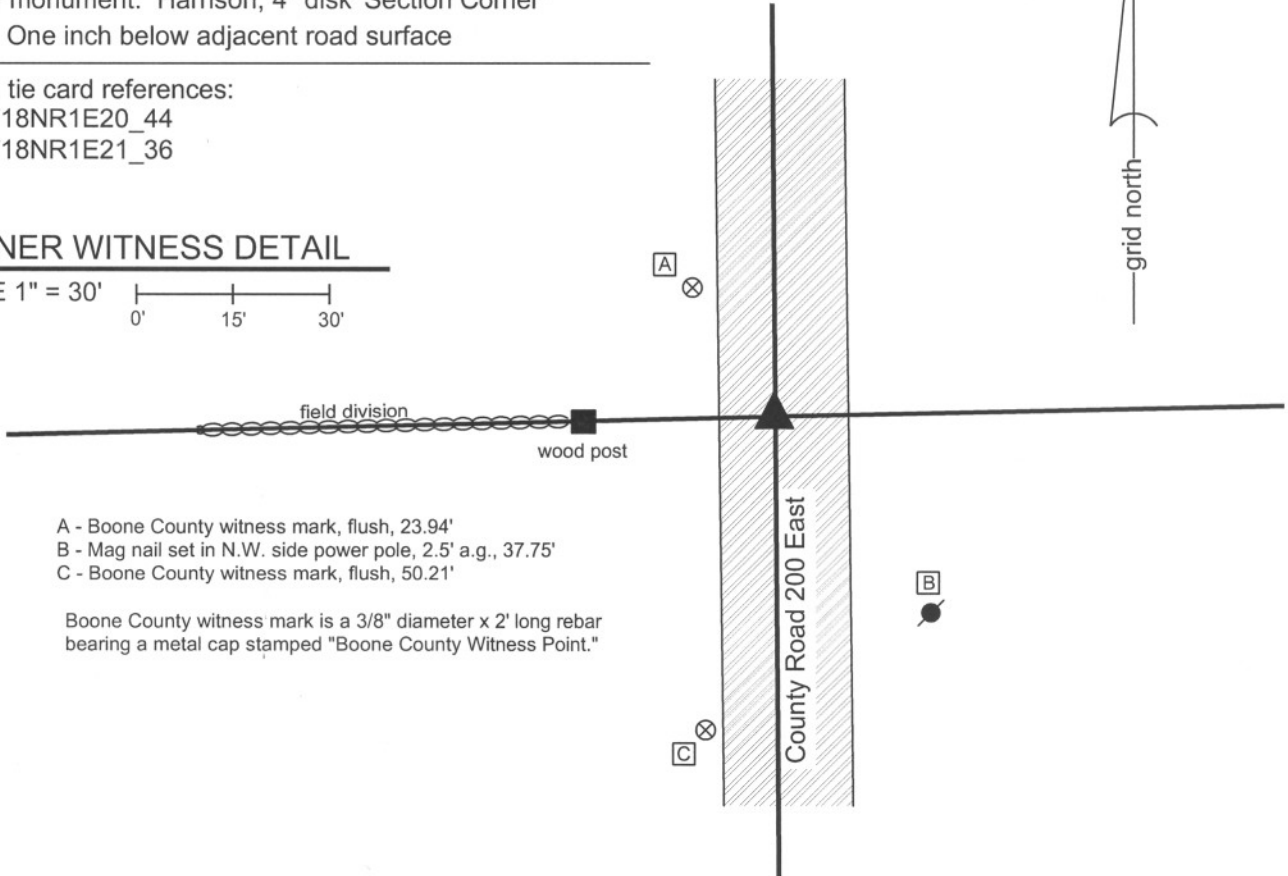
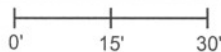
IN02_T18NR1E20_44

IN02_T18NR1E21_36



CORNER WITNESS DETAIL

SCALE 1" = 30'



- A - Boone County witness mark, flush, 23.94'
- B - Mag nail set in N.W. side power pole, 2.5' a.g., 37.75'
- C - Boone County witness mark, flush, 50.21'

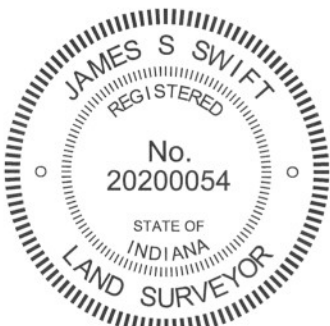
Boone County witness mark is a 3/8" diameter x 2' long rebar bearing a metal cap stamped "Boone County Witness Point."

The harrison monument was set in place of a railroad spike found.

A BCS record of June 18-19, 1866 states "a stake set in a prairie." A BCS record of March 6, 1873 states "Reestablished, set stake in ditch..." A BCS tie card dated May 4, 1992 shows the corner as a railroad spike found.

A railroad spike found at 2 inches below the surface of the asphalt appeared to be the same monument as shown on the 1992 tie card. The specific ties from 1992 are no longer present, but the graphical representation on the card showed the corner as being in the approximate center of County Road 200 East at the easterly extension of a fence to the west. The fence has been removed but a post from the fence remains and a clear field division is present to the west of the post. The railroad spike was found in the approximate center of the road at the extension of the field division as extended through the existing post. This corner falls in an area of substantial fill material. The 1876 map of Boone County shows County Road 200 East as being East of the section line in the vicinity of the corner and shows the ditch referenced in the 1873 record crossing the corner. The road nows runs generally straight and follows the section line closely, as evidenced by stones found to the north and south. Clearly, the open ditch has been filled and the current road constructed over fill material. Substantial excavation was not performed and the railroad spike was held as the corner. The railroad spike was removed and replaced with a harrison monument. No other monument or physical evidence was found below the railroad spike.

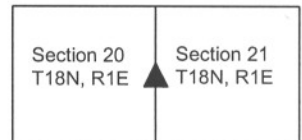
This corner was originally established as a wood post in 1820.



Kenneth E. Hedge
Kenneth E. Hedge, County Surveyor

James S. Swift
James S. Swift, IN LS 20200054
July 25, 2011

Eagle Township



SECTION CORNER RECORD

SE 400-100

BOONE COUNTY SURVEYOR'S OFFICE

State Plane grid coordinates NAD83 (CORS96):

North: 1724556.97 East: 3129967.83 (U.S. survey feet)

Type of monument: Harrison, 4" disk 'Section Corner'

Depth: One inch below adjacent road surface

Indiana tie card references:

IN02_T18NR1E19_80 IN02_T18NR1E20_72

IN02_T18NR1E30_00 IN02_T18NR1E29_00

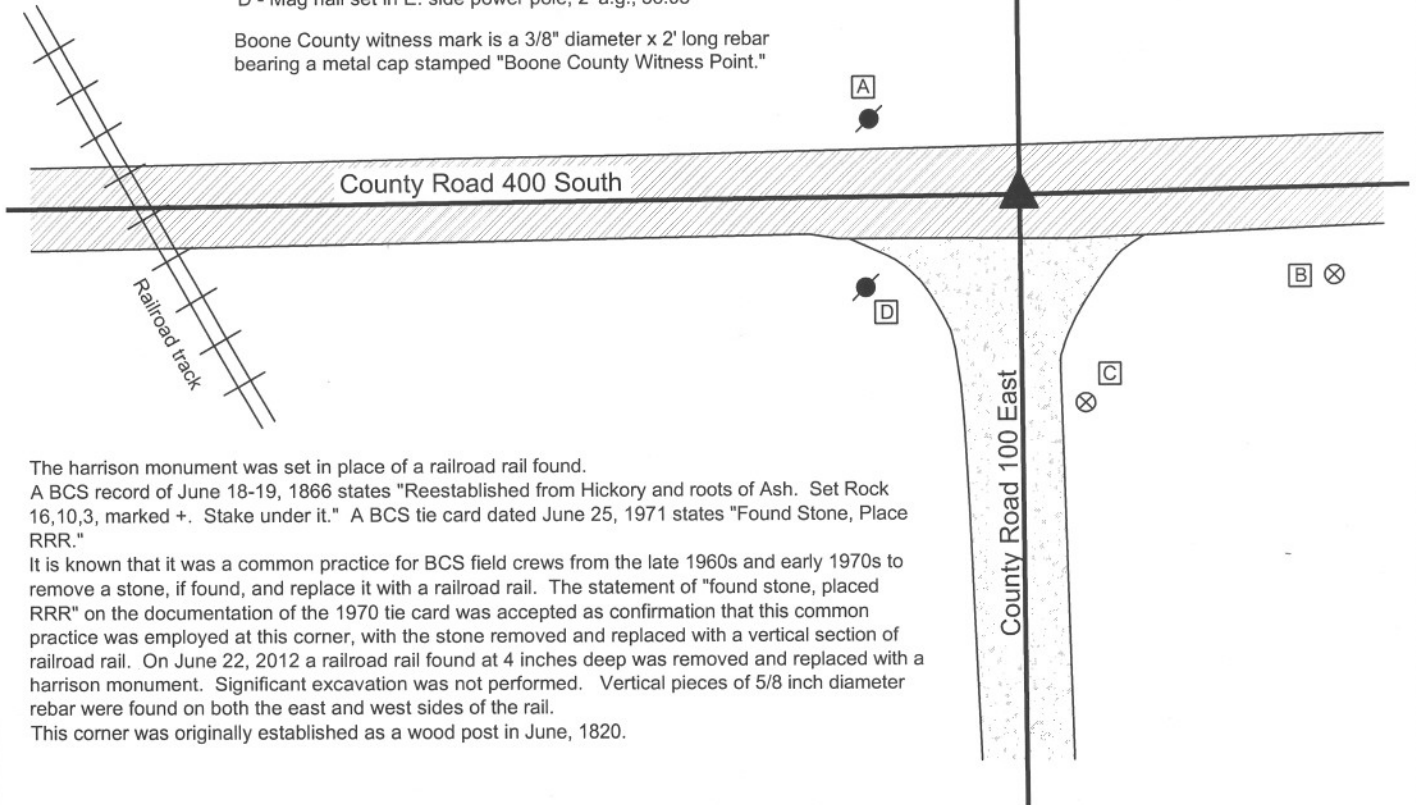
CORNER WITNESS DETAIL

SCALE 1" = 40'



- A - Mag nail set in S. side power pole, 2' a.g., 34.10'
- B - Boone County witness mark, flush, 68.01'
- C - Boone County witness mark, flush, 45.23'
- D - Mag nail set in E. side power pole, 2' a.g., 36.03'

Boone County witness mark is a 3/8" diameter x 2' long rebar bearing a metal cap stamped "Boone County Witness Point."

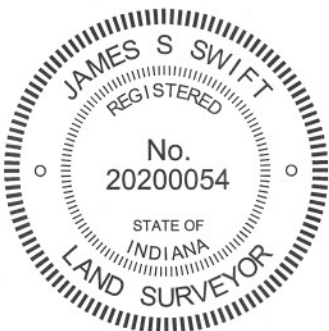


The harrison monument was set in place of a railroad rail found.

A BCS record of June 18-19, 1866 states "Reestablished from Hickory and roots of Ash. Set Rock 16,10,3, marked +. Stake under it." A BCS tie card dated June 25, 1971 states "Found Stone, Place RRR."

It is known that it was a common practice for BCS field crews from the late 1960s and early 1970s to remove a stone, if found, and replace it with a railroad rail. The statement of "found stone, placed RRR" on the documentation of the 1970 tie card was accepted as confirmation that this common practice was employed at this corner, with the stone removed and replaced with a vertical section of railroad rail. On June 22, 2012 a railroad rail found at 4 inches deep was removed and replaced with a harrison monument. Significant excavation was not performed. Vertical pieces of 5/8 inch diameter rebar were found on both the east and west sides of the rail.

This corner was originally established as a wood post in June, 1820.



Kenneth E. Hedge
 Kenneth E. Hedge, County Surveyor

James S. Swift
 James S. Swift, IN LS 20200054
 January 15, 2013

Harrison Township

Section 19 T18N, R1E	Section 20 T18N, R1E
Section 30 T18N, R1E	Section 29 T18N, R1E

SECTION CORNER RECORD

SE 400-150

BOONE COUNTY SURVEYOR'S OFFICE

State Plane grid coordinates NAD83 (CORS96):

North: 1724615.12 East: 3132646.89 (U.S. survey feet)

Type of monument: Harrison, 4" disk 'Section Corner'

Depth: One inch below adjacent road surface

Indiana tie card references:

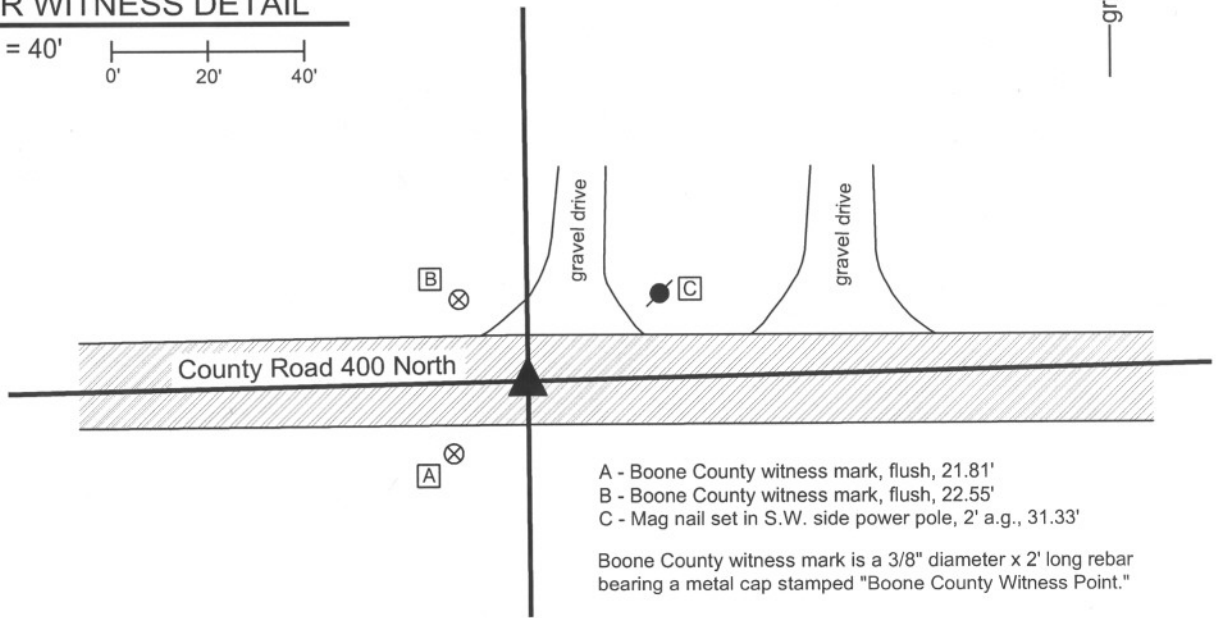
IN02_T18NR1E20_76

IN02_T18NR1E29_04



CORNER WITNESS DETAIL

SCALE 1" = 40'



- A - Boone County witness mark, flush, 21.81'
- B - Boone County witness mark, flush, 22.55'
- C - Mag nail set in S.W. side power pole, 2' a.g., 31.33'

Boone County witness mark is a 3/8" diameter x 2' long rebar bearing a metal cap stamped "Boone County Witness Point."

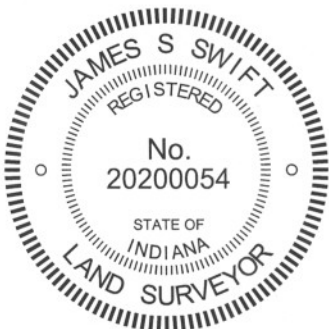
The harrison monument was set in place of a stone found.

A BCS record of June 18-19, 1866 states Reestablished from both trees, drove a stake." A BCS record of April 18, 1867 states "Set a Rock. 11,9,5."

A BCS tie card dated May 4, 1992 shows the corner as a PK nail found.

This corner was excavated on June 25, 2012. Prior to excavation, a railroad spike was found at 3 inches deep in the asphalt roadway. Excavation revealed the stone described in the 1867 record at 15 inches deep. As found, the stone appeared to have been knocked over. The stone was embedded in the clay but oriented in a haphazard fashion, which is not typical of stones set by the County Surveyor's Office in the mid to late 1800s. The stone was fully embedded in the clay layer below the road bed. The stone was removed and measured to be 11 inches by 9 inches by 5 inches, per the 1867 record. The position of the main body of the stone, as embedded in the clay, was in the center of the east-west road, directly in line with the old end post to the south. This position was held as marking the corner and a harrison monument was set at this position. The railroad spike, removed during excavation, had been 1.1 feet north of the position of the corner as established.

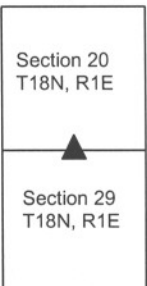
This corner was originally established as a wood post in June, 1820.



Kenneth E. Hedge
Kenneth E. Hedge, County Surveyor

James S. Swift
James S. Swift, IN LS 20200054
January 15, 2013

Perry Twp



PHOTOGRAPHIC DOCUMENTATION

Date of photography: June 25, 2012

View of the stone as first exposed.



View of the stone more fully exposed.
View from above and west.



View of the stone and the posts on the south side of County Road 400 South.



View of the stone from above and north.



The hole in the road bed after the stone was removed.



For details and documentation, refer to related sheet "Section Corner Record."

SECTION CORNER RECORD

SE 400-200

BOONE COUNTY SURVEYOR'S OFFICE

State Plane grid coordinates NAD83 (NSRS 2007):

North: 1724680.57 East: 3135311.64 (U.S. survey feet)

Type of monument: Harrison, 4" disk 'Section Corner'

Depth: One inch below adjacent road surface

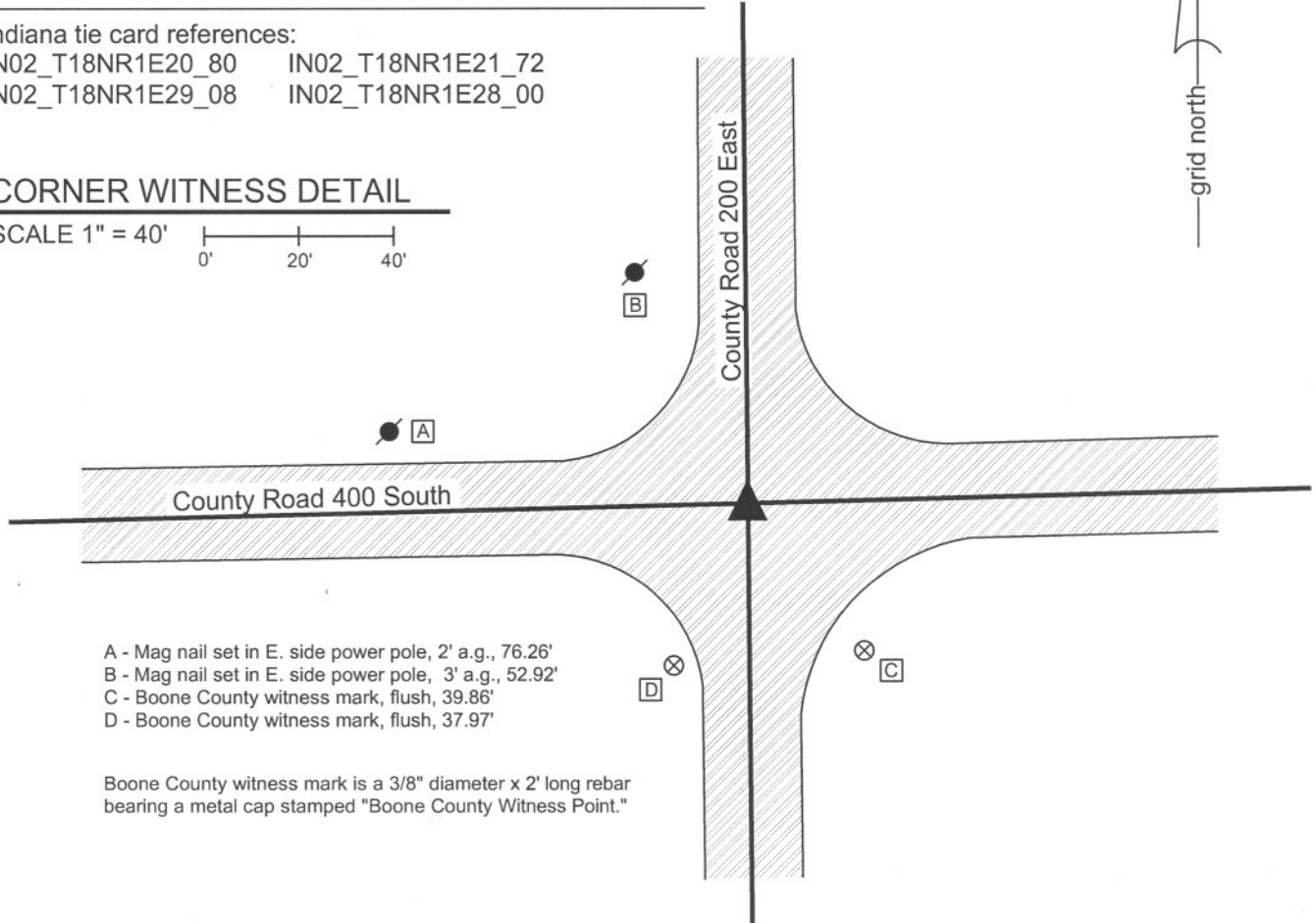
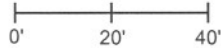
Indiana tie card references:

IN02_T18NR1E20_80 IN02_T18NR1E21_72

IN02_T18NR1E29_08 IN02_T18NR1E28_00

CORNER WITNESS DETAIL

SCALE 1" = 40'



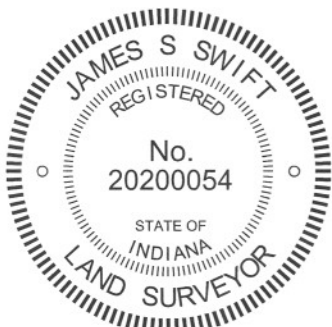
- A - Mag nail set in E. side power pole, 2' a.g., 76.26'
- B - Mag nail set in E. side power pole, 3' a.g., 52.92'
- C - Boone County witness mark, flush, 39.86'
- D - Boone County witness mark, flush, 37.97'

Boone County witness mark is a 3/8" diameter x 2' long rebar bearing a metal cap stamped "Boone County Witness Point."

The harrison monument was set over a stone found.

A BCS record of October 13 & 21, 1869 states "Reestablished from Beech. Rock 19.12.9 +." A BCS tie card dated July 21, 1968 states "no stone." This corner was excavated on November 2, 2009. Prior to excavation a Mag Nail was visible at the surface. Excavation revealed a railroad spike found at 2 inches deep, below the nail. Further excavation revealed a section of railroad rail on end at 10 inches deep, below the railroad spike. The 1968 tie card does not mention the establishment of a monument, but it is believed most likely that the railroad rail was set at the same time the tie card was made proclaiming "no stone." Further excavation revealed two small stones found at 15 inches deep. The record stone was found below the two small stones, at 20 inches deep. The stone is fully embedded in the clay layer below the road, with the top of the stone at the top of the clay. With the top six inches of the stone exposed, the stone measures 12 inches N-S by 9 inches E-W. An etched "+" is clearly visible on the west side of the stone, approximately 3 inches down from the top. The harrison monument was set over the top of the stone, in line with the etched "+". The Mag nail, railroad spike and railroad rail, all removed during excavation, were all 2.0 feet north and 0.75 feet east of the stone.

This corner was originally established as a wood post in 1820.



Kenneth E. Hedge
Kenneth E. Hedge, County Surveyor

James S. Swift
James S. Swift, IN LS 20200054
July 25, 2011

Perry Township

Section 20 T18N, R1E	Section 21 T18N, R1E
Section 29 T18N, R1E	Section 28 T18N, R1E

PHOTOGRAPHIC DOCUMENTATION

Date of photography: December 14, 2009

View of the top two stones as first exposed.



View of the larger of the top two stones with the lower, record, stone visible below.



The stone described in the 1868 record from above and northwest.



The record stone from above and north. The two upper stones are visible on the pavement.



View of the top and west side of the record stone.



Same view as to the left, with the etched mark on the stone enhanced for ease of visual detection.



For details and documentation, refer to related sheet "Section Corner Record."