

SECTION CORNER RECORD

NE 800-600

BOONE COUNTY SURVEYOR'S OFFICE

State Plane grid coordinates NAD83 (2011):

Corner 1: North: 1788449.66 East: 3155925.81 (U.S. survey feet)

Corner 2: North: 1788627.86 East: 3155926.02 (U.S. survey feet)

Type and depth of monument:

Corner 1: Harrison, 4" disk 'Section Corner' 3 inches above grade

Corner 2: 5/8" rebar with metal cap 'Boone County Surveyor' 14 inches deep

Indiana tie card references:

IN02_T20NR1E24_80 IN02_T20NR2E19_72

IN02_T20NR1E25_08 IN02_T20NR2E30_00

CORNER WITNESS DETAIL

SCALE 1" = 40'

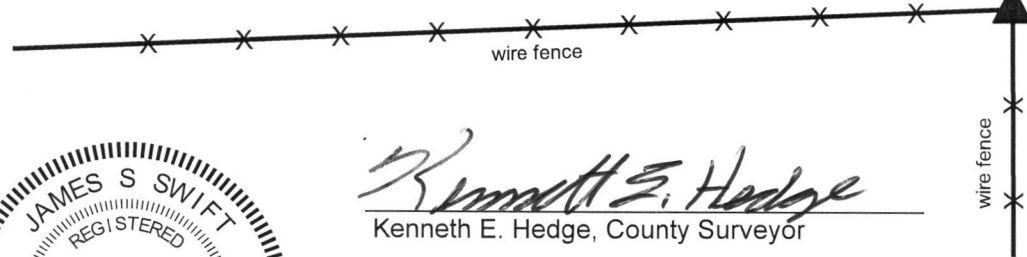
The Harrison monument at Corner 1 was set over remnants of a wood post found. The rebar at Corner 2 was set at a calculated position.

A BCS record of December 13 & 26, 1871 states, with respect to Corner 1, "Reestablished by running the line from D Section 25 North 79.80 to D of this Sect. I think the Oak B Tree was a little west of the range line but am not sure but it is gone. Placed corner in the middle of the line I run 39.80 from D and 270 links South of corner Section 19 & 30. Set a Rock 14.10.7 +." The record also includes a long note explaining the establishment of the south line of section 24.

A BCS record of December 20, 1870 states, with respect to Corner 2, "SW cor Sect [19] Reestablished at intersection of Range line with South line Sect from E to e & F to f. Set a Rock 8.6. by 5 1/2 + & a stake under it."

Excavation was performed at Corner 1 on April 25, 2018. Prior to excavation, standing fences were visible to the south and west of the corner, but the immediate vicinity of the corner was clearly disturbed, with a variety of rocks and old fencing piled together at the point where the standing fences intersect and also slightly SW of that point. The rubble was removed from the apparent position of the corner and substantial manual excavation was performed in this immediate vicinity. The stone 14.10.7 stone called for in the December 13 & 26, 1871 record was not found. It is considered most likely that the stone was removed prior to or during the obvious disruption of the corner which caused the pile of rubble. However, remnants of a wood post were found at 10 inches deep at the exact point where the fences from the south and west appear to intersect. The post appeared to be of the same size and character as the posts supporting the standing fencing to the south and west. The remnants of the post were accepted as representing the best available evidence of the corner and were held as marking the corner. It is noted that this corner, together with the south quarter corner and southwest corner of Section 24 (see corners NE 800-500 and NE 800-550) fall close to a straight line, which correlates with the explanatory notes from the 1871 record discussing the establishment of the south line of Section 24.

Corner 2 falls in a tilled field. The position of Corner 2 was computed on the range line at 270 links north of Corner 1. Excavation in the vicinity of this calculated position on April 27, 2018 revealed various pieces of broken clay tile at up to 12 inches deep, indicating previous disturbance of this corner. A 30 inch length of 5/8 inch rebar was set at the calculated position. The rebar was set 14 inches below the surface grade of the field and capped with a metal cap stamped 'Boone County Surveyor.' The 270 links (178.2') distance was held as firm, though a scale factor of 1.00451 is typically applied to distances reported in records from 1860 to 1895. An uncertainty of approximately 0.8 foot N-S is therefore associated with the position of Corner 2 with respect to the offset distance held.

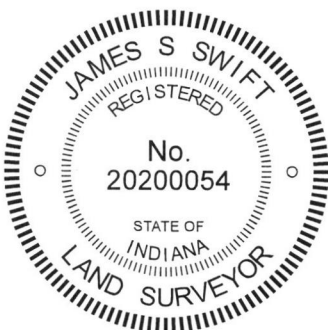


② S.W. Corner, Section 19
N.W. Corner, Section 30
T 20 N, R 2 E

The Harrison monument at Corner 1 is situated at the intersection of standing fences to the south and west, witnessed by an orange fiberglass lathe labeled 'Survey Markef.' The monument is adjacent to and northeast of a pile of rocks and fencing. Corner 2 falls within a tilled field, set at 14 inches below grade and is not visible on the surface. No other distance ties are provided.

Distance between monuments:
178.2' (270 links)

① S.E. Corner, Section 24
N.E. Corner, Section 25
T 20 N, R 1 E



Kenneth E. Hedge
Kenneth E. Hedge, County Surveyor

James S. Swift
James S. Swift, IN LS 20200054
May 23, 2018

Clinton Township	Marion Township
Section 24 T20N, R1E	Section 19 T20N, R2E
Section 25 T20N, R1E	Section 30 T20N, R2E

SECTION CORNER RECORD

BOONE COUNTY SURVEYOR'S OFFICE

NE 800-650

State Plane grid coordinates NAD83 (2011):

North: 1788680.92 East: 3158651.06 (U.S. survey feet)

Type of monument: Harrison, 4" disk 'Section Corner'

Depth: Three inches above adjacent ground

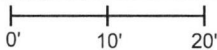
Indiana tie card references:

IN02_T20NR2E19_76 IN02_T20NR2E30_04

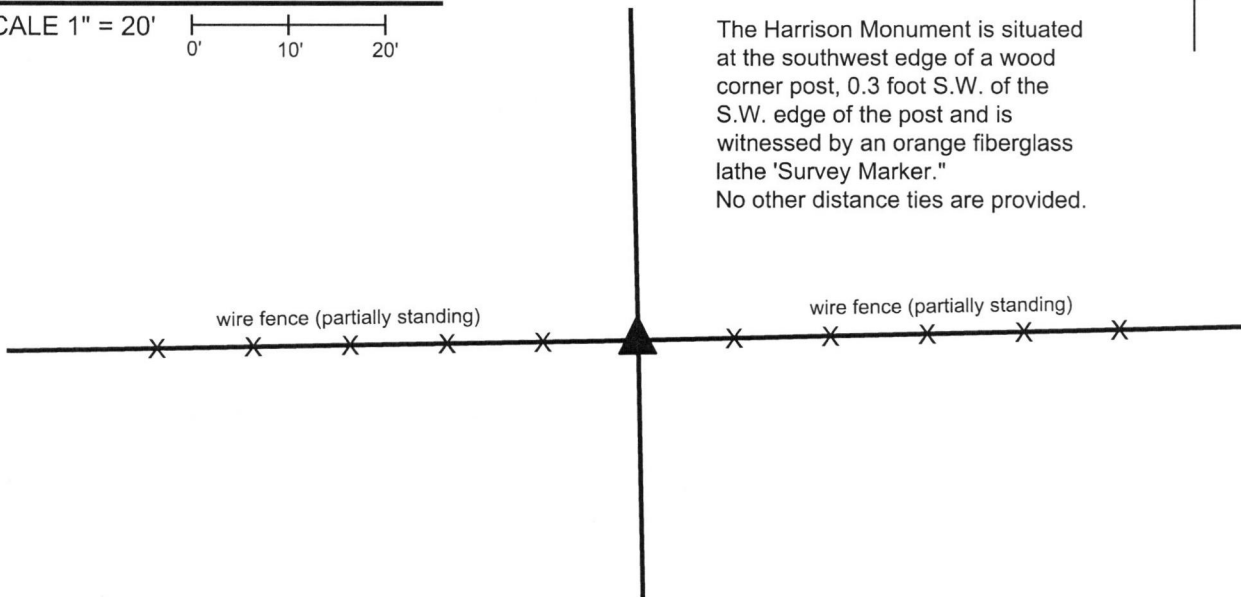


CORNER WITNESS DETAIL

SCALE 1" = 20'



The Harrison Monument is situated at the southwest edge of a wood corner post, 0.3 foot S.W. of the S.W. edge of the post and is witnessed by an orange fiberglass lathe 'Survey Marker.' No other distance ties are provided.

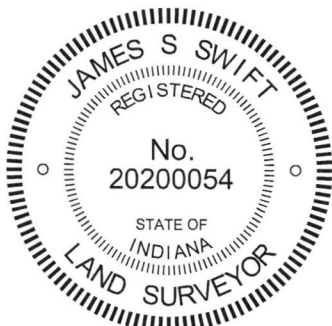


The Harrison Monument was set in place of a stone found.

A BCS record of December 20, 1870 states, with respect to this corner, "Reestablished from SE B.T. Set a Rock 11.7 by 5 1/2." No recent BCS tie cards were found referencing this corner. A reference sheet provided by the Indiana Department of Transportation dated June 13, 2005 shows the corner as a wood corner post.

Excavation was performed at this corner on April 13, 2018. Prior to excavation, a wood post was found with partially standing fencing to the east and west and fencing cut-off toward the north. The post is in line with a series of posts and scraps of fence to the north found along the east edge of a farm lane south of County Road 850 North. Excavation around the post revealed the stone described in the 1870 record at 3 inches deep adjacent to the southwest edge of the post. The stone was vertical with a clearly etched "+" mark on the top. The stone was removed, measured and found to exactly match the record dimensions, being 11 inches tall by 7 inches N-S by 5 1/2 inches E-W. The stone appeared to be undisturbed as found and was accepted as marking the corner. A Harrison monument was set in the same horizontal position as the "+" mark on the top of the stone, as originally found.

This corner was originally established as a wood post in 1821.



Kenneth E. Hedge
Kenneth E. Hedge, County Surveyor

James S. Swift
James S. Swift, IN LS 20200054
April 18, 2018

Marion Township

Section 19
T20N, R2E

Section 30
T20N, R2E

SECTION CORNER RECORD

NE 850-600

BOONE COUNTY SURVEYOR'S OFFICE

State Plane grid coordinates NAD83 (2011):

North: 1791109.49 East: 3155928.89 (U.S. survey feet)

North: 1791277.79 East: 3155927.74 (U.S. survey feet)

Type and depth of monument:

Corner 1: Harrison, 4" disk 'Section Corner', flush

Corner 2: 5/8" rebar with metal cap 'Boone County Surveyor'

Indiana tie card references:

IN02_T20NR1E24_44

IN02_T20NR2E19_36

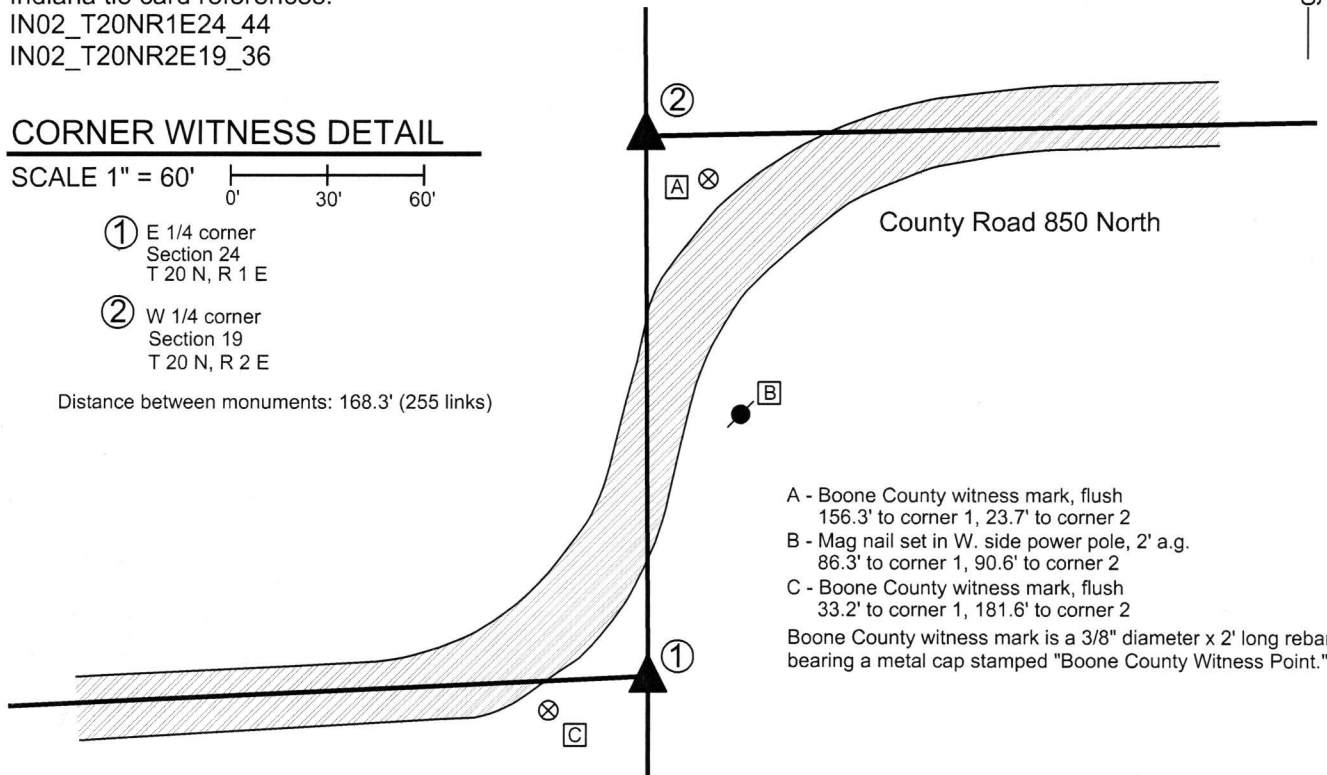
CORNER WITNESS DETAIL

SCALE 1" = 60'
0' 30' 60'

① E 1/4 corner
Section 24
T 20 N, R 1 E

② W 1/4 corner
Section 19
T 20 N, R 2 E

Distance between monuments: 168.3' (255 links)



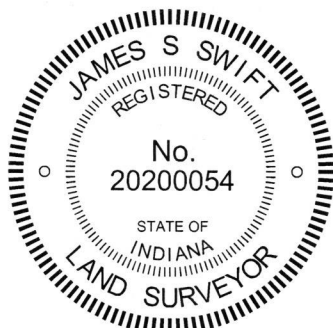
- A - Boone County witness mark, flush
156.3' to corner 1, 23.7' to corner 2
 - B - Mag nail set in W. side power pole, 2' a.g.
86.3' to corner 1, 90.6' to corner 2
 - C - Boone County witness mark, flush
33.2' to corner 1, 181.6' to corner 2
- Boone County witness mark is a 3/8" diameter x 2' long rebar bearing a metal cap stamped "Boone County Witness Point."

The Harrison monument at corner 1 was set per local evidence.

A BCS record of December 20, 1870, with respect to corner 2, states "drove stake." A BCS record of December 13 & 26, 1871, with respect to corner 1, states "Reestablished from Oak stump of tree. Set two Rocks one 6.5 1/2. 3+ Top one 18.14.6 +.....The lap is 255 links." No recent BCS tie cards were found referencing these corners.

Excavation was performed at both corners on November 19, 2013. No monuments, iron or otherwise, were found prior to excavation. The specific areas of excavation were determined by local evidence in the form of the extended center of County Road 850 North to the east (corner 2) and west (corner 1), the old fence to the south of corner 1 and the offset distance of 255 links stated on the 1871 record. This distance (255 links = 168.3 feet) fits well with the relative locations of the road to the east and west. The expected locations of both corners fall in grass, with the road jogging briefly north-south between them. Large areas were excavated at both corners. The excavation revealed no further physical evidence of the corners. Corner 1 was established at a point in line with the fence to the south, 25 feet north of the corner post, which point is also in line with the center of County Road 850 North to the west. Corner 2 was established on the range line at 255 links north of corner 1. A 5/8 inch diameter rebar topped with a metal cap stamped "Boone County Surveyor" was set at Corner 2.

Corner 1 was originally established as a wood post in 1819. Corner 2 is not an original federal corner.

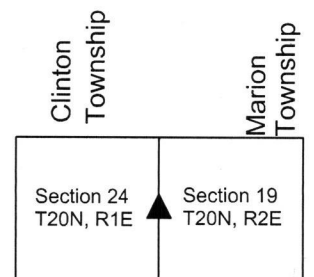


Kenneth E. Hedge

 Kenneth E. Hedge, County Surveyor

James S. Swift

 James S. Swift, IN LS 20200054
 April 12, 2017



SECTION CORNER RECORD

NE 800-700

BOONE COUNTY SURVEYOR'S OFFICE

State Plane grid coordinates NAD83 (2011):

North: 1788742.34 East: 3161291.47 (U.S. survey feet)

Type of monument: 5/8" diameter rebar with aluminum cap stamped 'Boone County Surveyor'

Depth: Fourteen inches below surrounding ground

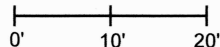
Indiana tie card references:

IN02_T20NR2E20_72 IN02_T20NR2E19_80

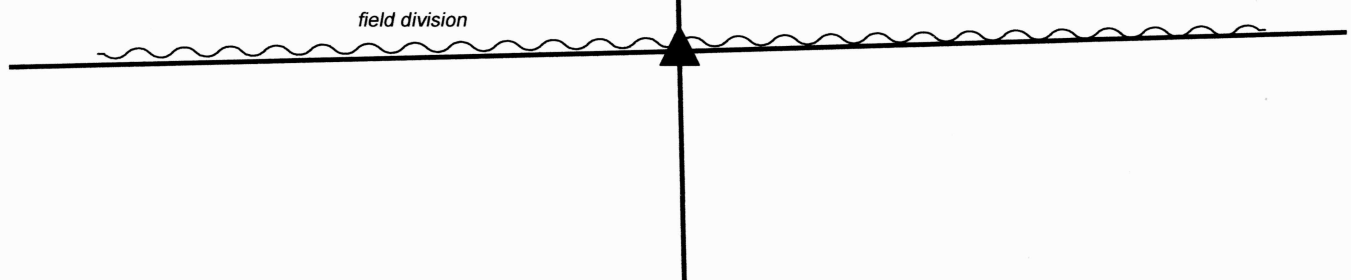
IN02_T20NR2E30_08 IN02_T18NR1W29_00

CORNER WITNESS DETAIL

SCALE 1" = 20'



This corner falls in a tilled field. No witness ties are available

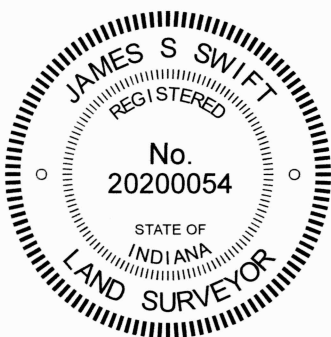



The rebar with Boone County cap was set at a calculated position.

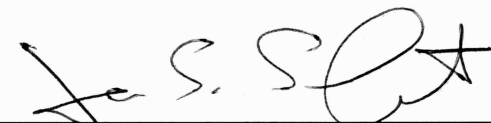
A BCS record dated January 21 to 23, 1869 states, with respect to this corner, "Reestablished from W. Oak, green, found plain blaze and notch by chopping. Set a Rock 15.13.4 in. marked 1 on top." Neither recent BCS tie cards nor surveys recorded in the Office of the Boone County Recorder were found referencing this corner.

In the immediate vicinity of the corner, the only physical evidence is an east-west field division. However, standing fencing was found to both the east and west of the corner. The standing fence terminates approximately 440 feet west of the corner and 434 feet east of the corner. The position of the corner was computed on the westerly prolongation of a line connecting the north quarter corner of Section 29 (see BCS Corner NE 800-750) and the post found 434 feet east of the corner, at a distance equal to the distance between the north quarter corner and northeast corner of Section 29. This yielded a position which fit well, in the north-south dimension, with the standing post 440 feet west of the corner. In the east-west dimension, this solution yielded a best-fit solution with other proximate corners.

Manual excavation and probing in the vicinity of the corner revealed no further evidence. Clearly, the fencing in this area has been completely removed, as no scraps of fence were found embedded in the ground. As the immediate vicinity of the corner may be subject to plowing, being in an east-west field division, with nothing to prevent agricultural equipment destroying a surface monument, the corner was monumented with a 24-inch length of 5/8-inch rebar with Boone County Surveyor Cap set at 14 inches below grade. The monument was set on February 2, 2024




Carol Cunningham, County Surveyor


James S. Swift, IN LS 20200054

February 14, 2024

Marion Township

Section 19 T20N, R2E	Section 20 T20N, R2E
Section 30 T20N, R2E	Section 29 T20N, R2E

SECTION CORNER RECORD

NE 850-700

BOONE COUNTY SURVEYOR'S OFFICE

State Plane grid coordinates NAD83 (CORS96):

North: 1791386.79 East: 3161232.85 (U.S. survey feet)

Type of monument: Harrison, 4" disk 'Section Corner'

Depth: One inch below adjacent road surface

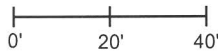
Indiana tie card references:

IN02_T20NR2E19_44

IN02_T20NR2E20_36

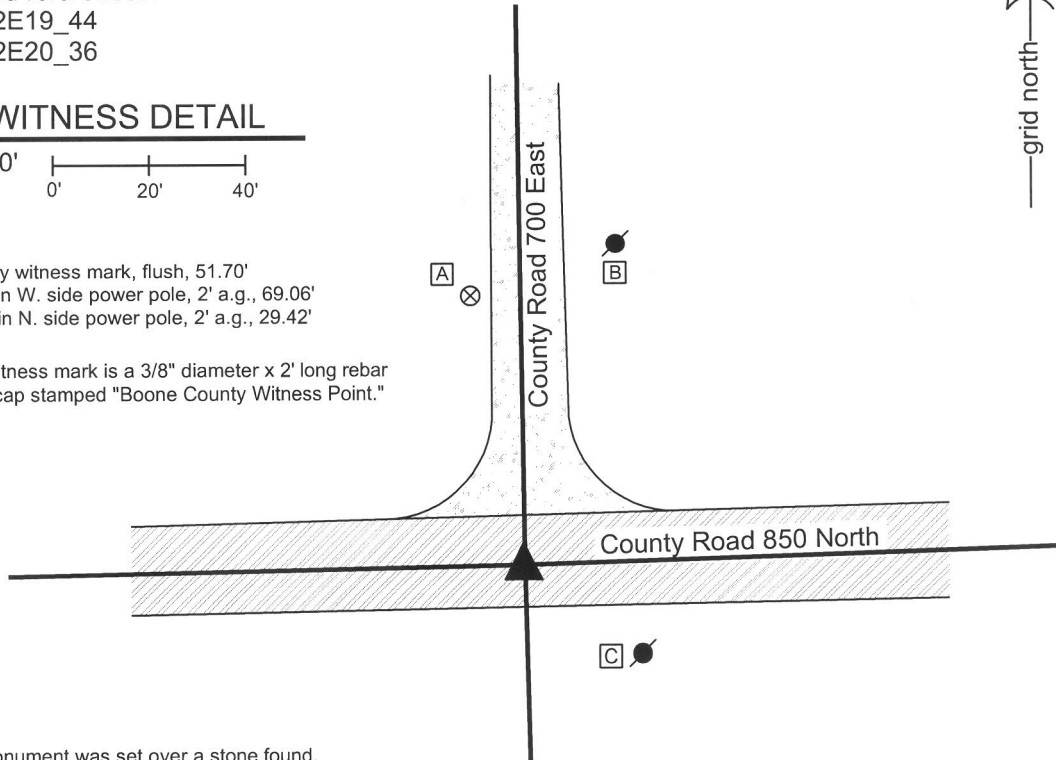
CORNER WITNESS DETAIL

SCALE 1" = 40'



- A - Boone County witness mark, flush, 51.70'
- B - Mag nail set in W. side power pole, 2' a.g., 69.06'
- C - Mag nail set in N. side power pole, 2' a.g., 29.42'

Boone County witness mark is a 3/8" diameter x 2' long rebar bearing a metal cap stamped "Boone County Witness Point."

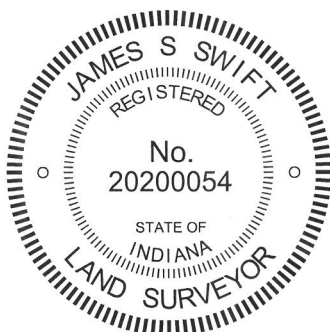


The harrison monument was set over a stone found.

A BCS record of January 22, 1869 states "Found from Sugar (blown out by the roots but is here yet) drove no stake." A BCS tie card dated July 1975 states "Stone Found 14 inches deep."

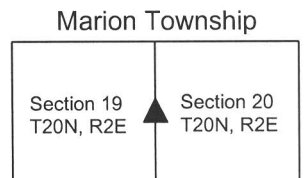
This corner was excavated on July 30, 2013. Prior to excavation, a 1/2 inch diameter rebar was found at 8 inches deep in a hole in the asphalt roadway. Excavation revealed a stone found at 14 inches deep, west of the rebar. With the top 9 inches of the stone exposed, it measured 9 inches E-W by 6 inches N-S and was clearly yet larger in the vertical dimension. The stone was embedded in the clay layer below the road, protruding approximately 2 inches into the bottom of the road bed. No specific marks were found on the stone. The stone appeared to be stable and undisturbed. Nothing beside road bed material and clay was found below the rebar, which was removed during excavation and measured to be 14 inches tall. It is noted that BCS field crews from 1968 to 1974 generally followed a procedure of stating "stone" if a stone was found, then removing it and replacing it with another monument, typically a section of railroad rail or 1/2 inch rebar, with no specific mention of that action. The crew working in 1975 (Kent and Joe) were more descriptive in their records, stating such phrases as "stone found - set rod." The fact that they only state that the stone was found is interpreted, for this particular field crew, as meaning they found it and left it place. Given that the found stone fits the characteristics of other stones found marking corners throughout the county and was found at the depth called for in the 1975 record and fits with local evidence, being at the center of the intersection of the two roads, and appeared to be undisturbed, the stone was held as marking the corner. A harrison monument was set over the top, center of the stone. The rebar, removed during excavation, had been 1.2 feet east and 0.4 foot north of this point. The source of the rebar is not known.

This corner was originally established as a wood post in 1821.



Kenneth E. Hedge
 Kenneth E. Hedge, County Surveyor

James S. Swift
 James S. Swift, IN LS 20200054
 February 5, 2015



PHOTOGRAPHIC DOCUMENTATION

Date of photography: July 30, 2013

View of the stone as first exposed.



View from above and south showing the stone exposed and the position of the rebar (marked by the plumb-bob).



View from the south, looking across the stone and north along County Road 700 East.



View from the east, looking across the stone and west along County Road 850 North.



For details and documentation, refer to related sheet "Section Corner Record."

SECTION CORNER RECORD

NE 900-600

BOONE COUNTY SURVEYOR'S OFFICE

State Plane grid coordinates NAD83 (2011):

Corner 1: North: 1793764.62 East: 3155910.87 (U.S. survey feet)

Corner 2: North: 1793920.37 East: 3155909.67 (U.S. survey feet)

Corner 1: Harrison, 4" disk 'Section Corner', flush

Corner 2: 5/8" rebar with metal cap 'Boone County Surveyor, 14" deep

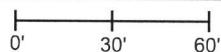
Indiana tie card references:

IN02_T20NR1E13_80 IN02_T20NR2E18_72

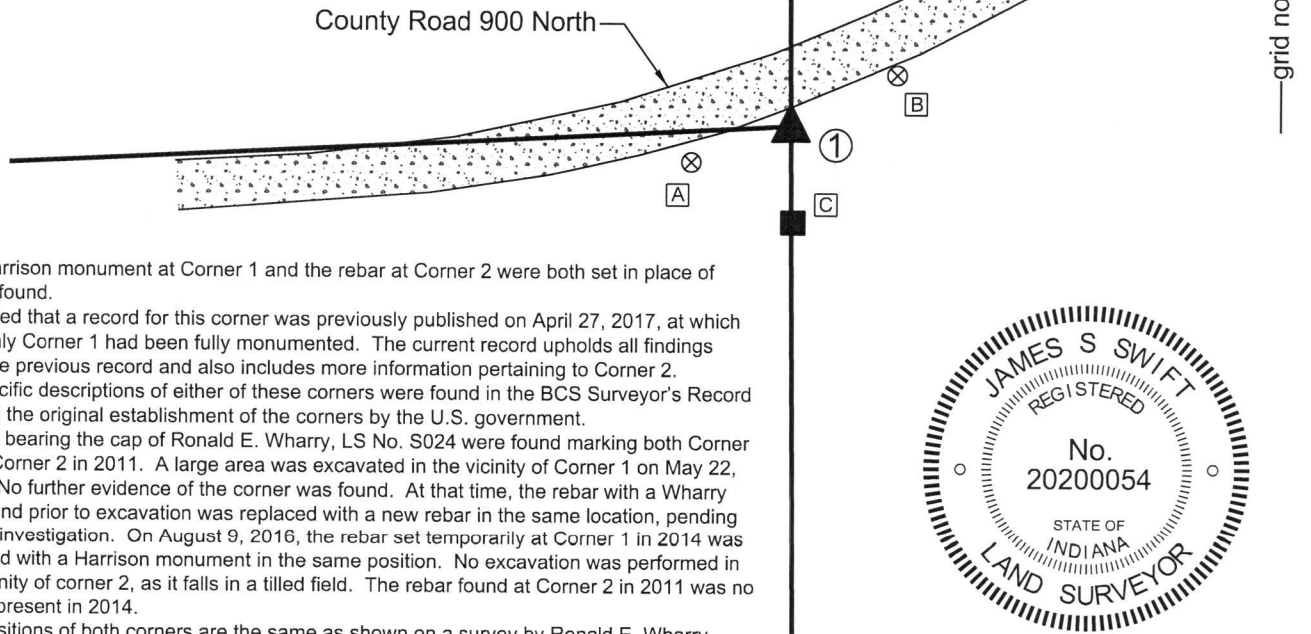
IN02_T20NR1E24_08 IN02_T20NR2E19_00

CORNER WITNESS DETAIL

SCALE 1" = 60'



- A - Boone County witness mark, flush, 33.1'
33.1' to Corner 1, 169.6' to Corner 2
- B - Boone County witness mark, flush
36.5' to Corner 1, 143.9' to Corner 2
- C - Wood post amidst pile of rocks and rubble
29' to Corner 1, 185' to Corner 2



① S.E. Corner, Section 13
N.E. Corner, Section 24
T 20 N, R 1 E
Harrison Monument set

② S.W. Corner, Section 18
N.W. Corner, Section 19
T 20 N, R 2 E
5/8 inch rebar set, 14 inches deep

Distance between monuments: 155.8' (236 links)

The Harrison monument at Corner 1 and the rebar at Corner 2 were both set in place of rebars found.

It is noted that a record for this corner was previously published on April 27, 2017, at which time only Corner 1 had been fully monumented. The current record upholds all findings from the previous record and also includes more information pertaining to Corner 2.

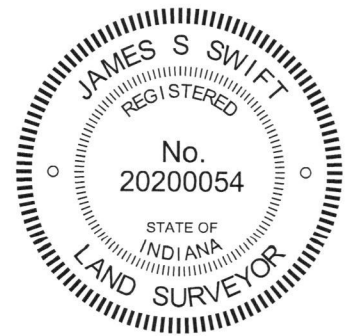
No specific descriptions of either of these corners were found in the BCS Surveyor's Record beyond the original establishment of the corners by the U.S. government.

Rebars bearing the cap of Ronald E. Wharry, LS No. S024 were found marking both Corner 1 and Corner 2 in 2011. A large area was excavated in the vicinity of Corner 1 on May 22, 2014. No further evidence of the corner was found. At that time, the rebar with a Wharry cap found prior to excavation was replaced with a new rebar in the same location, pending further investigation. On August 9, 2016, the rebar set temporarily at Corner 1 in 2014 was replaced with a Harrison monument in the same position. No excavation was performed in the vicinity of corner 2, as it falls in a tilled field. The rebar found at Corner 2 in 2011 was no longer present in 2014.

The positions of both corners are the same as shown on a survey by Ronald E. Wharry recorded as Instrument 201100003587 in the Boone County Surveyor's Office.

The Wharry survey holds the record closing distance of 236 links between the corners, which also fits with the evidence of the roadways to the east and west of the corners. This distance yields a reasonable position for Corner 2. On April 9, 2018, a rebar with a metal cap stamped "Boone County Surveyor" was set in the same position as the rebar originally found in 2011 marking Corner 2. The rebar was set at 14 inches deep to avoid disturbance by agricultural equipment.

Corner 1 was originally established as a wood post in 1819. Corner 2 was originally established as a wood post in 1821.



Marion Township Clinton Township

Section 13 T20N, R1E	Section 18 T20N, R2E
Section 24 T20N, R1E	Section 19 T20N, R2E

James S. Swift
James S. Swift, IN LS 20200054

Kenneth E. Hedge
Kenneth E. Hedge, County Surveyor

April 18, 2018

SECTION CORNER RECORD

BOONE COUNTY SURVEYOR'S OFFICE

NE 900-650

State Plane grid coordinates NAD83 (CORS96):

North: 1793978.88 East: 3158553.59 (U.S. survey feet)

Type of monument: Harrison, 4" disk 'Section Corner'

Depth: six inches below adjacent gravel road surface

Indiana tie card references:

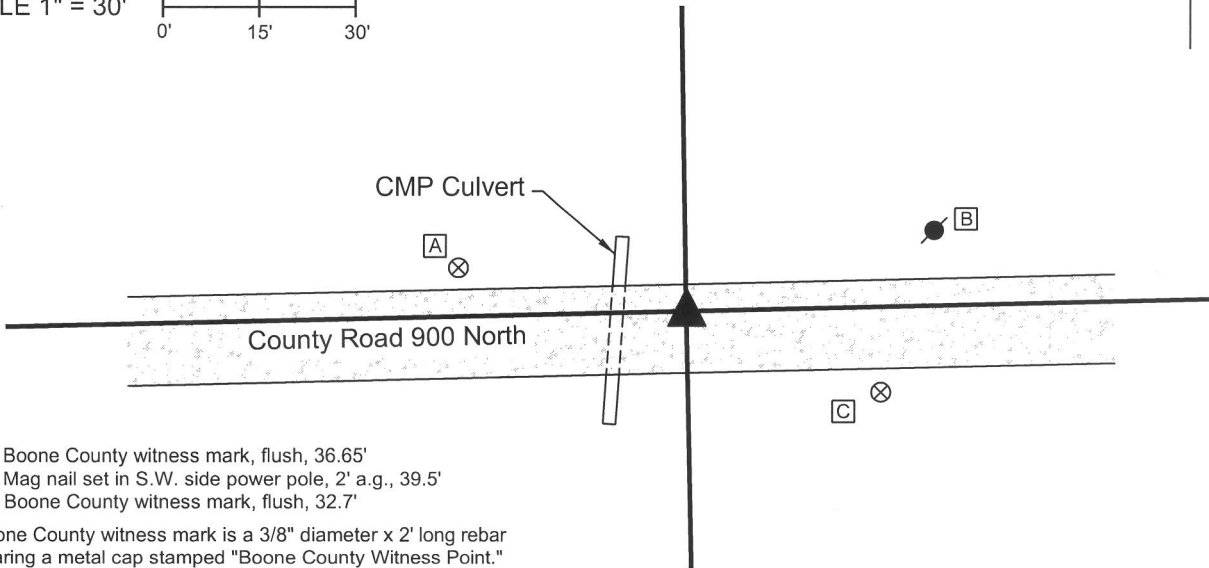
IN02_T20NR2E18_76

IN02_T20NR2E19_04



CORNER WITNESS DETAIL

SCALE 1" = 30'



- A - Boone County witness mark, flush, 36.65'
- B - Mag nail set in S.W. side power pole, 2' a.g., 39.5'
- C - Boone County witness mark, flush, 32.7'

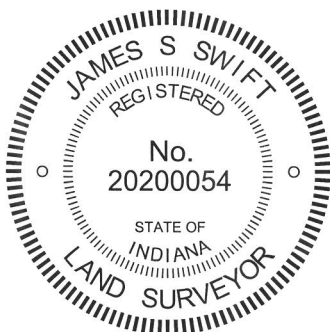
Boone County witness mark is a 3/8" diameter x 2' long rebar bearing a metal cap stamped "Boone County Witness Point."

The harrison monument was set in place of a vertical section of steel T-post found.

A BCS record of October 22, 1873 states "the point found from stump of one tree." A BCS record of May 19, 1895 states "Reestablished. Set Rock 24x15x8 marked +." A BCS tie card dated January 18, 1994 shows the corner as a metal post with no documentation of source.

This corner was excavated on September 19, 2013. Prior to excavation a steel T-post was found at 11 inches deep in the gravel road. Excavation of an area extending 2 feet north, 2 feet east, 7 feet south and 10 feet west of the metal post revealed no further evidence of the corner. Modern fill material, being #53 road stone was found immediately below the gravel road surface extending to approximately 12 inches deep. No ancient road bed material was found between the modern fill and the clay layer below the road. At the west edge of the area of excavation the modern fill material was found to extend deeper and appears to be back fill material for a culvert which crosses the road immediately west of the corner. The presence of the modern fill material indicates that sufficient construction has been performed on the road bed that it is most likely that the corner stone set in 1895 has been removed. Analysis of measurements from the 1895 record and the corners to the east and west indicate that the corner may be located up to 8 feet further west, but given the presence of the culvert and the lack of evidence found in the road, the metal post shown on the 1994 tie card was accepted as marking the corner. This marker was replaced with a harrison monument in the same position.

This corner was originally established as a wood post in 1821.



Kenneth E. Hedge
Kenneth E. Hedge, County Surveyor

James S. Swift
James S. Swift, IN LS 20200054
February 5, 2015

Marion Township

Section 18
T20N, R2E

Section 19
T20N, R2E

SECTION CORNER RECORD

BOONE COUNTY SURVEYOR'S OFFICE

NE 900-700

State Plane grid coordinates NAD83 (CORS96):

North: 1794038.31 East: 3161197.33 (U.S. survey feet)

Type of monument: Harrison, 4" disk 'Section Corner'

Depth: six inches below adjacent gravel road surface

Indiana tie card references:

IN02_T20NR2E18_80 IN02_T20NR2E17_72

IN02_T20NR2E19_08 IN02_T20NR2E20_00

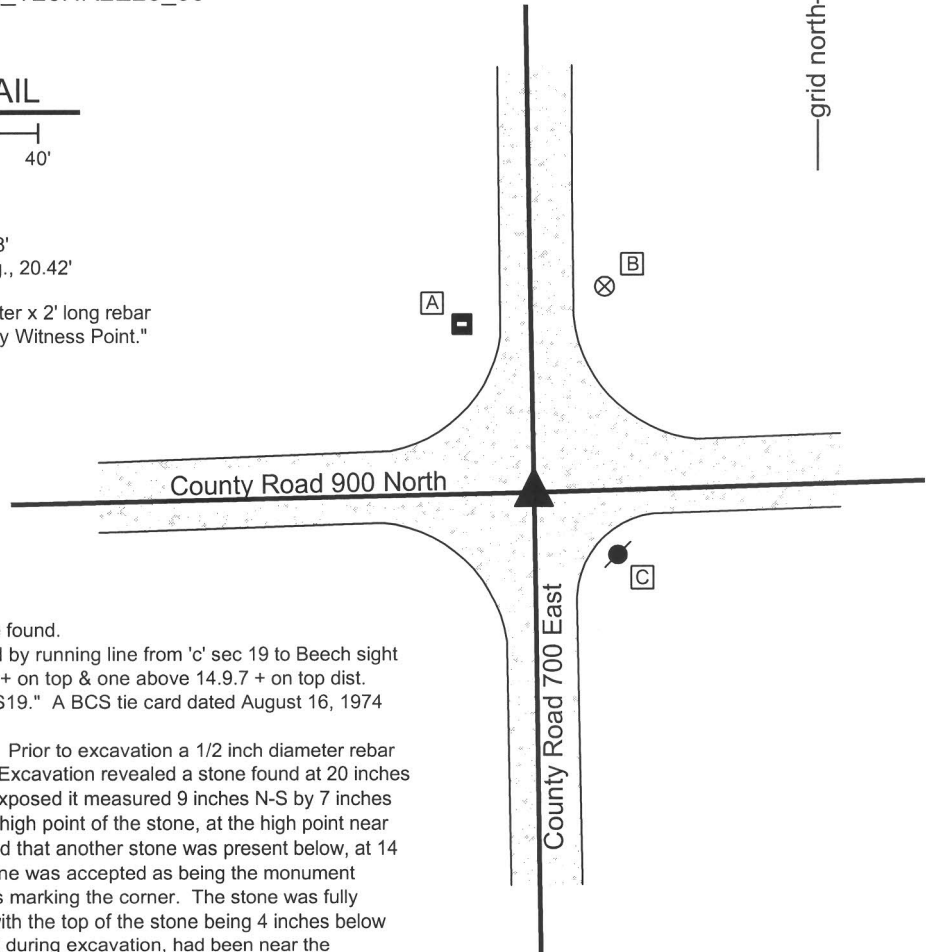


CORNER WITNESS DETAIL

SCALE 1" = 40'

- A - East edge, metal stop sign post, 37.56'
- B - Boone County witness mark, flush, 45.38'
- C - Mag nail set in N. side power pole, 2' a.g., 20.42'

Boone County witness mark is a 3/8" diameter x 2' long rebar bearing a metal cap stamped "Boone County Witness Point."



The harrison monument was set over a stone found.

A BCS record of April 28, 1883 states "Found by running line from 'c' sec 19 to Beech sight tree north (distance 49.20) Set Rock 6.11.13 + on top & one above 14.9.7 + on top dist. 29.13 south of sight tree & 20.07 north of 'c' S19." A BCS tie card dated August 16, 1974 states "no stone found."

This corner was excavated on July 30, 2013. Prior to excavation a 1/2 inch diameter rebar was found at the surface of the gravel road. Excavation revealed a stone found at 20 inches deep. With 6 inches of the top of the stone exposed it measured 9 inches N-S by 7 inches E-W. A vague chisel mark was visible at the high point of the stone, at the high point near the north edge of the stone. Probing indicated that another stone was present below, at 14 inches from the top of the top stone. The stone was accepted as being the monument described in the 1883 record and was held as marking the corner. The stone was fully embedded in the clay layer below the road, with the top of the stone being 4 inches below the top of the clay layer. The rebar, removed during excavation, had been near the southwest edge of the stone, being 0.5 foot south and 0.6 foot west of the etched mark on the high point. The stone was left in place and a harrison monument was set directly over the etched + mark.

This corner was originally established as a wood post in 1821.



Kenneth E. Hedge
 Kenneth E. Hedge, County Surveyor

James S. Swift
 James S. Swift, IN LS 20200054
 February 5, 2015

Marion Township

Section 18 T20N, R2E	Section 17 T20N, R2E
Section 19 T20N, R2E	Section 20 T20N, R2E

PHOTOGRAPHIC DOCUMENTATION

Date of photography: July 30, 2013

View of the stone as first exposed.
View from above and west.



View from above, showing the etched "+" mark on the top of the stone.



View from above the stone, looking west along County Road 900 North.



View from the north, looking across the stone and south along County Road 700 East.



For details and documentation, refer to related sheet "Section Corner Record."